



THE UNIVERSITY *of* EDINBURGH

Edinburgh Research Explorer

Parental education ain't enough

Citation for published version:

Curry, TJ & Assari, S 2021, 'Parental education ain't enough: A study of race (racism), parental education, and children's thalamus volume', *Journal of Education and Culture Studies*, vol. 5, no. 1, pp. 1-21.
<https://doi.org/10.22158/jecs.v5n1p1>

Digital Object Identifier (DOI):

[10.22158/jecs.v5n1p1](https://doi.org/10.22158/jecs.v5n1p1)

Link:

[Link to publication record in Edinburgh Research Explorer](#)

Document Version:

Publisher's PDF, also known as Version of record

Published In:

Journal of Education and Culture Studies

General rights

Copyright for the publications made accessible via the Edinburgh Research Explorer is retained by the author(s) and / or other copyright owners and it is a condition of accessing these publications that users recognise and abide by the legal requirements associated with these rights.

Take down policy

The University of Edinburgh has made every reasonable effort to ensure that Edinburgh Research Explorer content complies with UK legislation. If you believe that the public display of this file breaches copyright please contact openaccess@ed.ac.uk providing details, and we will remove access to the work immediately and investigate your claim.



Original Paper

Parental Education Ain't Enough: A Study of Race (Racism), Parental Education, and Children's Thalamus Volume

Shervin Assari^{1,2*} & Tommy J. Curry³

¹ Department of Family Medicine, Charles R. Drew University of Medicine and Science, Los Angeles, CA, USA

² Department of Pediatrics, Charles R. Drew University of Medicine and Science, Los Angeles, CA, USA

³ Department of Philosophy, School of Philosophy, Psychology, and Language Sciences, University of Edinburgh, Edinburgh, Scotland

* Shervin Assari, E-mail: assari@umich.edu; Tel.: +(734)-232-0445; Fax: +734-615-873

Received: October 31, 2020 Accepted: November 13, 2020 Online Published: December x, 2020

doi:10.22158/jecs.v5n1p1

URL: <http://dx.doi.org/10.22158/jecs.v5n1p1>

Abstract

Introduction. *The thalamus is the hub of the brain and has a significant role in various brain activities.*

Purpose. *This study explored racial differences in the association between parental education and thalamus volume among American children. **Methods.** Using data from the Adolescent Brain Cognitive Development (ABCD), we analyzed the structural Magnetic Resonance Imaging (sMRI) data of 11141 9-10 years old children. The main outcome was the thalamus volume. The independent variable was parental education. Age, sex, ethnicity, family marital status, and intracranial volume were the covariates. Race was the moderator. To analyze the data, we used mixed-effects regression models.*

Results. *In race-stratified models, high parental education was associated with smaller thalamus volume in White but not Black children. In the pooled sample, significant interactions were found between race and parental education suggesting that the effect of parental education on left thalamus volume is significantly smaller for Blacks and mixed/other race children than White children. **Conclusions.** The effect of parental education on children's thalamus volume seems to be weaker for Black and other/mixed-race children than their White counterparts. This finding is in support of Minorities' Diminished Returns (MDRs) that suggest due to social stratification and racism, economic resources have weaker than expected effects in minority populations.*

Keywords

socioeconomic position, socioeconomic factors, brain development, thalamus, children, MRI

1. Introduction

Parental education is one of the main socioeconomic status (SES) indicators (Oshri et al., 2019). High SES is associated with lower odds of antisocial behaviors (Palma-Coca et al., 2011), school problems (Sirin, 2005), learning disorders (Fluss et al., 2009), attention deficit and hyperactivity disorder (Assari & Caldwell, 2019a; Collins & Cleary, 2016; Jablonska et al., 2020; Machlin, McLaughlin, & Sheridan, 2019), aggression (Heshmat et al., 2016), early sexual initiation (Feldstein Ewing et al., 2018), and use of tobacco (Barreto, de Figueiredo, & Giatti, 2013; Kaleta, Usidame, Dzionkowska-Zaborszczyk, & Makowiec-Dabrowska, 2015), alcohol (Moore & Littlecott, 2015; Silveira et al., 2014), and drugs (Gerra et al., 2020). The SES effects are at least in part due to the effects of SES on brain structures and function (Javanbakht et al., 2015; Masten, Telzer, & Eisenberger, 2011; Wu et al., 2015).

A wide range of brain structures such as the thalamus, hippocampus, amygdala, and cerebral cortex carry the effects of high SES on brain function (Baxendale & Heaney, 2011; D. J. Kim et al., 2019; Lawson et al., 2017; Noble, Houston, Kan, & Sowell, 2012; Staff et al., 2012). The thalamus is shown to be linked to SES (Lisanne M Jenkins et al., 2020). Thalamus size and function correlate with psychosis, depression, anxiety, and attention deficit hyperactivity disorder (ADHD) (Adriano, Spoleitini, Caltagirone, & Spalletta, 2010; Huang et al., 2017; Mills et al., 2012; Nugent, Davis, Zarate Jr, & Drevets, 2013; Rosch et al., 2018; Tsatsanis et al., 2003; Young, Bonkale, Holcomb, Hicks, & German, 2008; Young, Holcomb, Yazdani, Hicks, & German, 2004). Some research suggests that altered structure and function of brain regions such as thalamus, hippocampus, amygdala, and cerebral cortex may partially mediate the effect of high family SES on brain development and function (Lisanne M Jenkins et al., 2020; Hair, Hanson, Wolfe, & Pollak, 2015; Hanson et al., 2015; L. M. Jenkins et al., 2020; Johnson, Riis, & Noble, 2016; Machlin et al., 2019; McEwen & Gianaros, 2010; McLean et al., 2012; K. G. Noble et al., 2015; Noble et al., 2012; Staff et al., 2012; Suchy-Dicey et al., 2019).

Although a growing literature has documented a link between high SES and children's brain development, most of the existing knowledge is on a select few brain structures such as the amygdala, hippocampus, cortex, and cerebral cortex (Evans et al., 2016; Javanbakht et al., 2016; Javanbakht et al., 2015; Kimberly G Noble et al., 2015). For example, most research on the effects of trauma, stress, adversities, and SES are on the amygdala structure and function (Evans et al., 2016; Javanbakht et al., 2016; Javanbakht et al., 2015; Kimberly G Noble et al., 2015). While the overall effects of SES on both volume and function of the amygdala are well established (Evans et al., 2016; Javanbakht et al., 2016; Javanbakht et al., 2015), some recent evidence has documented diminished effects of SES on the amygdala for Black than White children (Assari, Boyce, & Bazargan, 2020b). However, less is known on group differences in the effect of SES on thalamus volume (Baxendale & Heaney, 2011; Hair et al., 2015; Hanson, Chandra, Wolfe, & Pollak, 2011; Hanson et al., 2015; Lawson et al., 2017; K. G. Noble et al., 2015; Noble et al., 2012; Wang et al., 2016).

Besides, most previous studies have investigated the effects of SES indicators such as household income and poverty (Gonzalez et al., 2020; Kimberly G Noble et al., 2015; K. G. Noble et al., 2015; Piccolo et al.,

2016; Uban et al., 2020) on children's brain function. However, these SES indicators are mainly related to the presence of financial resources in the family. Parental education may reflect another aspect of SES that is not reflected by household income and poverty status (Assari, 2020; Assari, Boyce, Akhlaghipour, Bazargan, & Caldwell, 2020; Assari, Boyce, Bazargan, & Caldwell, 2020; L. M. Jenkins et al., 2020; Parker et al., 2017; Willis et al., 2014).

There is a need to test racial differences in the effects of parental education on brain development. As race and parental education closely overlap (Kaufman, Cooper, & McGee, 1997), family SES may explain why race impacts brain development. In this view, it is family SES, not race or ethnicity, which is the true driver of inequalities in children's brain development (Assari, 2018). At the same time, high family SES may have different effects on children's brain development across racial groups (Kimberly G Noble et al., 2015). This is supported by a growing body of research on Minorities' Diminished Returns (MDRs) (Assari, 2017; Assari, 2018), a phenomenon of weaker effects of SES on various health outcomes, including brain development of Black than White children in terms of attention (Assari, Boyce, & Bazargan, 2020a), impulse control (Assari, Caldwell, & Mincy, 2018), inhibitory control (Assari, 2020), depression (Assari & Caldwell, 2018), suicidality (Assari, Boyce, Bazargan, et al., 2020), anxiety (Assari, Caldwell, & Zimmerman, 2018), social and behavioral problems (Assari, Boyce, Caldwell, & Bazargan, 2020; Boyce, Bazargan, Caldwell, Zimmerman, & Assari, 2020), and attention deficit hyperactive disorder (ADHD) (Assari & Caldwell, 2019a). However, very little, if any is not on the multiplicative effects of race (as a proxy of racism) and parental education on thalamus volume.

1.1 Aims

This study compared racial groups for the effects of parental education on 9-10 year old children's left thalamus volume. In line with the MDRs literature (Assari, Boyce, Caldwell et al., 2020; Boyce et al., 2020), we expected a weaker effect of parental education on thalamus volume for Black and other racial minority children than White children. That means, we hypothesized a multiplicative effect of race and parental education on children's left thalamus volume.

2. Methods

2.1 The ABCD Study Design and Setting

This secondary data analysis had a cross-sectional methodological design. We used the existing data from the

This investigation used data from the Adolescent Brain Cognitive Development (ABCD) study (Alcohol Research: Current Reviews Editorial, 2018; Casey et al., 2018; Karcher, O'Brien, Kandala, & Barch, 2019; Lisdahl et al., 2018; Luciana et al., 2018). This cross-sectional study used wave 1 data from the ABCD study. ABCD is a national brain imaging study of children's brain structure and function (Alcohol Research: Current Reviews Editorial, 2018; Aucter et al., 2018).

2.2 Ethics

The ethics review board approved the ABCD study of the University of California in San Diego. While

youth signed assent, parents signed consent (Auchter et al., 2018). Given the de-identified nature of the data, our secondary analysis was exempt from the Charles R Drew University of Medicine and Science ethics review board.

2.3 Samples and Sampling

The ABCD study participants were drawn from schools in various cities across various US states. The subject recruitment was mainly conducted through local school systems. Schools were selected based on characteristics such as race, ethnicity, SES, sex, and urbanicity (Garavan et al., 2018). This paper's analytical sample was 11141 children who were between 9 and 10 years old. Inclusion in this analysis was limited to 9-10 years old children who had complete data on race, ethnicity, parental education, and thalamus volume.

2.4 sMRI and Image Acquisition

T1 weighted structural MRI images were taken using General Electric 750, 3 tesla (T) Siemens Prisma, and Phillips multi-channel coiled scanners. All MRI scanners were capable of multiband echo-planar imaging (EPI) acquisitions (Casey et al., 2018). A localizer was implemented at the beginning of the scan, followed by the T1 weighted structural image acquisition. Structural T1 weighted scan sequences were optimized for cortical/subcortical segmentation using a magnetization-prepared rapid acquisition gradient-echo. The outcome was left thalamus size measured in mm³. We operationalized this variable as a continuous measure. Using sMRI, ABCD data has thalamus volume in the data set. We also used intra-cranial volume (mm³) as a control variable.

2.5 Variables

Parental education. The independent variable was parental education, treated as a five-level variable: Less than high school diploma, High school diploma, some college, college graduation, and graduate school.

Age. Parents were asked to report children's age. Age was a dichotomous measure in years (9 vs. 10).

Sex. A dichotomous variable, sex was coded as male = 1 and female = 0.

Parental marital status. Family marital status, a dichotomous variable, was coded as married = 1, non-married = 0 (reference).

Race. The race was a self-identified variable: Black, Asian, Mixed/Other, and White.

Ethnicity. Parents were asked if they were from a Latino background. Ethnicity was coded as Latino = 1 and = 0.

2.6 Data Analysis

Using Data Exploration and Analysis Portal (DEAP), we reported mean (SD) and frequency tables (%) for our variables overall and by race. We calculated Chi-square and Analysis of variance (ANOVA) to explore bivariate associations (racial differences in the variables). To run multivariable analyses, four mixed-effects regression models were run. The first two models were run in the total sample. Model 1 did not include race by parental education interaction terms. Model 2 did include such interaction terms. Model 3 and Model 4 were run in White and Black children. To test our modeling assumptions, we ruled

out collinearity between study variables. We then tested the distribution of our outcome variables and error terms (residuals) of our regression models. In all these models, the predictor variable was parental education. The outcome was thalamus volume. Confounders included ethnicity, sex, age, and parental marital status. Moderator was race. Regression coefficient, standard errors (SEs), and p-values were reported. A p-value of less than 0.05 was significant.

3. Results

3.1 Descriptive Data

This secondary analysis included 11141 9-10 years old children. Children were either White (n = 1721; 15.4%), Black (n = 256; 2.3%), Asian (n = 1910; 17.1%), or other/mixed race (n = 5308; 47.6%). Table 1 shows the summary statistics of the study variables in the overall sample and by race.

Table 1. Descriptive Data by Race

level	All	White	Black	Asian	Other/Mixed	p
N	11141	7254	1721	256	1910	
		Mean (SD)	Mean (SD)	Mean (SD)	Mean (SD)	
Age (Month)	118.98 (7.47)	119.05 (7.49)	118.87 (7.28)	119.55 (7.78)	118.75 (7.50)	0.223
Subcortical Intracranial Volume (mm ³)	1512812.35 (148911.63)	1535501.90 (145521.10)	1458117.59 (142193.28)	1458146.17 (137512.78)	1483249.09 (149238.94)	< 0.001
Left Thalamus Volume (mm ³)	7696.59 (748.10)	7777.17 (738.29)	7480.88 (707.84)	7519.02 (683.90)	7608.71 (776.18)	< 0.001
Parental Education						
< HS Diploma	485 (4.4)	200 (2.8)	142 (8.3)	6 (2.3)	137 (7.2)	< 0.001
HS Diploma/GED	1016 (9.1)	372 (5.1)	420 (24.4)	4 (1.6)	220 (11.5)	
Some College	2897 (26.0)	1550 (21.4)	683 (39.7)	18 (7.0)	646 (33.8)	
Bachelor's	2871 (25.8)	2127 (29.3)	243 (14.1)	69 (27.0)	432 (22.6)	
Postgraduate Degree	3872 (34.8)	3005 (41.4)	233 (13.5)	159 (62.1)	475 (24.9)	
Sex						
Female	5308 (47.6)	3400 (46.9)	857 (49.8)	133 (52.0)	918 (48.1)	0.073
Male	5833 (52.4)	3854 (53.1)	864 (50.2)	123 (48.0)	992 (51.9)	
Married Family						
No	3540 (31.8)	1552 (21.4)	1209 (70.2)	36 (14.1)	743 (38.9)	< 0.001
Yes	7601 (68.2)	5702 (78.6)	512 (29.8)	220 (85.9)	1167 (61.1)	
Hispanic						
No	8941 (80.3)	5949 (82.0)	1639 (95.2)	235 (91.8)	1118 (58.5)	< 0.001
Yes	2200 (19.7)	1305 (18.0)	82 (4.8)	21 (8.2)	792 (41.5)	

3.2 Models' Fit

Table 2 summarizes the fit of our mixed-effects regression models in the total sample and by race. As shown in this table, including race by parental education helped the model explain a larger proportion of the variance of thalamus volume.

Table 2. Variance Explained by Our Models

	All (Main Effects)	All (Interaction Effects)	Whites	Blacks
N	11141	11141	7254	1721
R-squared	0.60787	0.60874	0.59985	0.60452
ΔR-squared	0.00039 (0.04%)	0.00378 (0.38%)	0.00158 (0.16%)	0.00248 (0.25%)

3.3 Parental Education and Left Thalamus Volume

Table 3 shows the results of our mixed-effects regression models in the total sample and by race. In all models, left thalamus volume as the outcome. In the pooled sample, parental education was not associated with left thalamus volume, net of confounders. Significant interactions were found between race and parental education on left thalamus volume, indicating larger effect for White than Black and other/mixed-race children. For White children, parental education was associated with smaller left thalamus volume. This association could not be found for Black children.

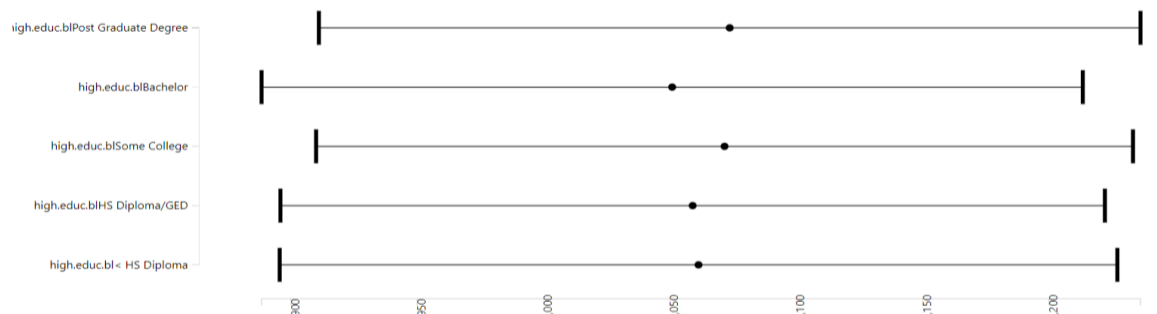
Table 3. Regressions in the Overall Sample and by Race with Left Thalamus Volume as the Outcome

All	All (Main Effect)			All (Interaction Effect)			White			Black		
	b	SE	p	b	SE	p	b	SE	p	b	SE	p
Parental Education (HS Diploma/GED)	-2.322	26.716	0.931	-113.895**	42.066	0.007	-117.876**	42.206	0.005	45.881	44.438	0.302
Parental Education (Some College)	10.303	24.085	0.669	-82.936*	36.586	0.023	-88.812*	36.975	0.016	48.007	42.487	0.259
Parental Education (Bachelor's)	-10.433	25.052	0.677	-105.911**	36.671	0.004	-114.613**	37.370	0.002	82.586#	49.592	0.096
Parental Education (Postgraduate Degree)	12.343	25.001	0.622	-84.861*	36.415	0.020	-95.165*	37.225	0.011	92.072#	50.490	0.068
Intracranial Volume (mm ³)	0.004***	0.000	< 0.001	0.004***	0.000	< 0.001	0.004***	0.000	< 0.001	0.004***	0.000	< 0.001
Race (Black)	25.010#	14.894	0.093	-106.284*	53.884	0.049	-	-	-	-	-	-
Race (Asian)	35.441	30.319	0.242	-89.085	185.154	0.630	-	-	-	-	-	-
Race (Other/Mixed)	43.008***	12.910	0.001	-143.479**	52.404	0.006	-	-	-	-	-	-
Parental Education (HS Diploma/GED) × Race (Black)	-	-	-	149.919*	62.968	0.017	-	-	-	-	-	-
Parental Education (Some College) × Race (Black)	-	-	-	119.203*	57.665	0.039	-	-	-	-	-	-
Parental Education (Bachelor's) × Race (Black)	-	-	-	165.089**	62.875	0.009	-	-	-	-	-	-
Parental Education (Postgraduate Degree) × Race (Black)	-	-	-	147.442*	62.952	0.019	-	-	-	-	-	-

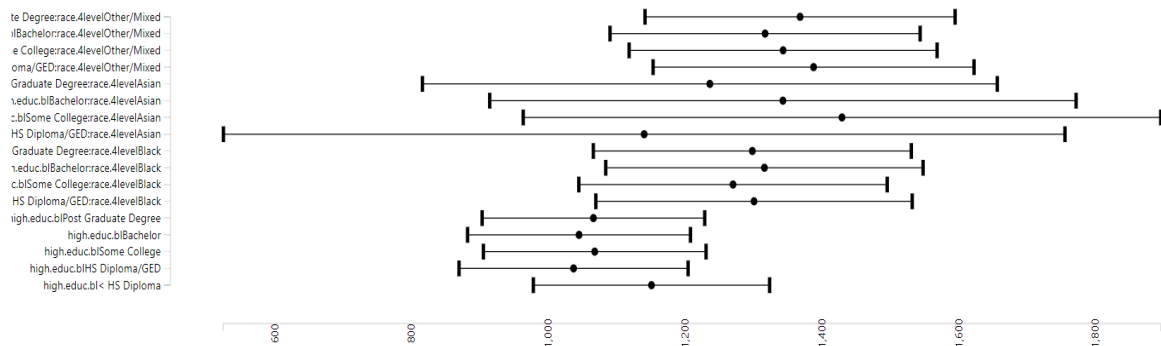
Parental Education (HS Diploma/GED) × Race (Asian)	-	-	-	-10.651	297.506	0.971	-	-	-	-	-
Parental Education (Some College) × Race (Asian)	-	-	-	278.506	215.236	0.196	-	-	-	-	-
Parental Education (Bachelor's) × Race (Asian)	-	-	-	192.138	193.919	0.322	-	-	-	-	-
Parental Education (Postgraduate Degree) × Race (Asian)	-	-	-	85.332	189.115	0.652	-	-	-	-	-
Parental Education (HS Diploma/GED) × Race (Other/Mixed)	-	-	-	236.965***	66.290	0.000	-	-	-	-	-
Parental Education (Some College) × Race (Other/Mixed)	-	-	-	192.432***	57.044	0.001	-	-	-	-	-
Parental Education (Bachelor's) × Race (Other/Mixed)	-	-	-	166.080**	58.366	0.004	-	-	-	-	-
Parental Education (Postgraduate Degree) × Race (Other/Mixed)	-	-	-	217.228***	57.579	0.000	-	-	-	-	-

3.4 Parental Education and Left Thalamus Volume Overall and by Race

Figure 1 shows the associations between parental education and left thalamus size overall and by race. Figure 1-a shows no association between parental education and left thalamus volume, net of confounders, in the pooled sample. Figure 1-b shows that this effect is significantly larger for White than Black and other/mixed-race children. As Figure 1-c shows, for White children, parental education was associated with smaller left thalamus volume. As Figure 1-d shows, this association could not be found for Black children.



a. All overall



b. All by race

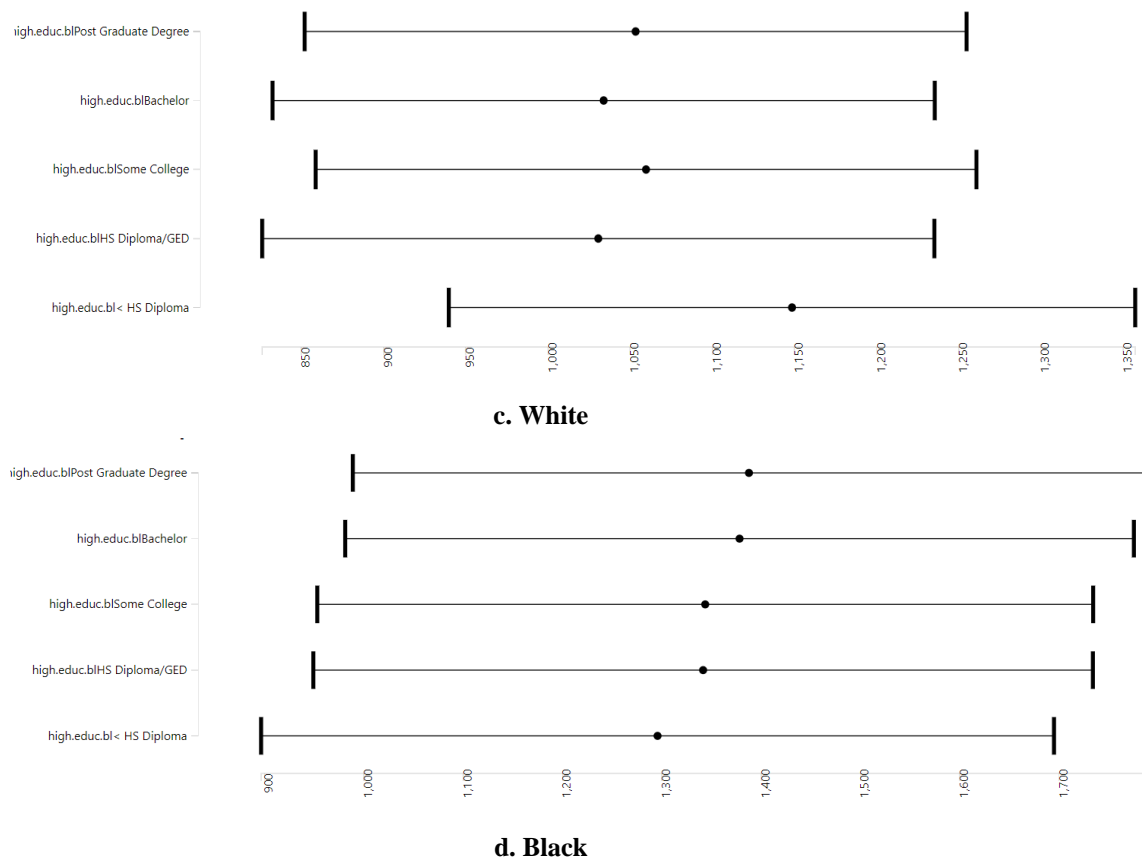


Figure 1. Association between Parental Education and Left Thalamus Volume Overall and by Race

4. Discussion

While higher parental education was associated with smaller left thalamus volume, this effect was larger for White than Black and other/mixed-race families.

Various studies have shown that high SES, commonly measured by parental education or household income, is associated with various functional and structural aspects of brain in children (Assari, Boyce, et al., 2020b; Assari, 2020) and adults (P. Kim et al., 2013; Staff et al., 2012). Studies also show a link between higher family SES on functional brain connectivity between various brain regions including the thalamus (Cassidy L McDermott et al., 2019; C. L. McDermott et al., 2019). The function and structure of brain regions such as the thalamus, hippocampus, amygdala, and cerebral cortex may mediate the effect of childhood SES on children's cognitive function and emotions (Barch et al., 2016). However, less is known about the effect of parental education than household income on children's brain development.

The reason parental education is linked to brain structure is that high parental education is a proxy of high-quality parenting (Anton, Jones, & Youngstrom, 2015; Emmen et al., 2013; Kiang, Andrews, Stein, Supple, & Gonzalez, 2013; Perkins, Finegood, & Swain, 2013; Woods-Jaeger, Cho, Sexton, Slagel, & Goggin, 2018) and lower parental risk behaviors (Danese et al., 2009; Ladebauche, 1997; Spann et al.,

2014; Subic-Wrana et al., 2011). These parenting behaviors have a salient role in childhood brain development (Assari & Bazargan, 2019). As a result of these cumulative economic and parenting advantages, children from high SES backgrounds show protection against psychopathologies (Chassin, Presson, Sherman, & Edwards, 1992; Kocaoglu et al., 2005; Padilla-Moledo, Ruiz, & Castro-Pinero, 2016), problem behaviors (Barbarin et al., 2006; Choi, Wang, & Jackson, 2019; Palma-Coca et al., 2011), and poor cognitive performance (Assari, 2020; Assari & Caldwell, 2019b; Assari, Caldwell, & Bazargan, 2019; Darvishi, Assari, Farhadian, Chavoshi, & Ehsani, 2019). At the same time, low family SES is a proxy of low income, poverty, and scarcity of resources which can interfere with the healthy development of youth's brains.

There is a growing body of literature using ABCD that documents racial differences in the effects of SES on children's brain development (Assari, 2020). Similar to this paper, those papers also show a larger effect of SES for White than non-White children (Assari, 2020). In a recent paper, subjective SES showed diminished returns on hippocampus size of Black than White children (Assari, 2020). In another paper, the effect of subjective SES on Amygdala size was weaker for Black and Latino children than White and non-Latino children (Assari, Boyce et al., 2020b). Similar to the current study, both of these studies have shown that race and SES do not have independent but interdependent effects on children's brain development (Assari, 2020).

We should re-emphasize that we see race as social, not biological determinants of thalamus volume. In our study, the race is proxies of racism, poverty, SES, differential access to resources, and unequal treatment by society. This view is different from biological frameworks that conceptualize race as innate, unchangeable biological markers (Herrnstein & Murray, 2010).

We found that race and parental education have multiplicative rather than additive effects. While for White children, high SES reflects low and low SES indicates high risk, high SES and low SES Black children have similar risk. Small thalamus volume is linked to problems in memory and learning, cognition, and motions, future research should test how societal and structural conditions impact emotional, cognitive, and behavioral outcomes through altered thalamus function (Chozick, 1983; Montagrin, Saiote, & Schiller, 2018; Yavas, Gonzalez, & Fanselow, 2019). The results of such investigations may have useful implications for clinical practice and public health, as well as the social and economic policy on how to reduce racial inequalities in brain development. The results of this investigation may direct policymakers on how they can promote brain health equity in the US. The results advocate for enhancing social justice across diverse racial groups.

Due to racism, high and low- SES Black children show similarly high risk. This is different for White children whose low SES are at risk and high SES are protected against risk. For Black children, under racism, family SES seems not to be enough to compensate for racism and adversities. Although we found MDRs of parental education for thalamus volume, similar patterns are shown for the effects of subjective SES on amygdala (Assari, Boyce et al., 2020b) and hippocampus (Assari, 2020) size.

The smaller protective effects of SES on brain development of Black children is due to various aspects of the society. These may be because of race-related stressors like racism and discrimination, segregation, and blocked opportunities. Racial discrimination, stress, trauma, and adversities have all been shown to impact the thalamus of Blacks across all SES levels (Moadab, Bliss-Moreau, Bauman, & Amaral, 2017; Thames et al., 2018; Tottenham & Sheridan, 2009).

Race, ethnicity, and SES have multiplicative and complex effects as social determinants of thalamus activity. The same may hold for other brain regions (Clark, Miller, & Hegde, 2018) such as amygdala (Assari, Boyce et al., 2020b) and hippocampus (Assari, 2020). Thus, programs and interventions should be in place to alleviate the risk and promote brain development of both low and high SES Black children. This means, middle-class Black children also need our attention. Early childhood programs and after school programs are effective in promoting brain development (Garces, Thomas, & Currie, 2002; Gershoff, Ansari, Purtell, & Sexton, 2016; Neville et al., 2013; Zigler & Valentine, 1979). Other social and economic policies should reduce the environmental and structural adversities in the lives of Black families, across the full SES spectrum.

It would be a mistake to interpret our findings as biological effect of race on brain through genetics. There is a growing number of publications complicating the seeming straightforward division between social science, epigenetics, and biology. This research intends to add complexity to the emerging discussions concerning socio-economic inequity, structural and cultural racism, societal marginalization, and brain development. It is the hope of the authors that our findings inspire more nuanced investigations into the consequences of societal inequity and marginalization and avoid the race pseudo-science asserting racial differences in mental capacity and I.Q. (Herrnstein & Murray, 2010). A full understanding of the multifaceted effects of racism and economic marginalization requires a deeper investigation into the sociological and biological antecedents of these disparities in brain development between intersectional groups. A comparative study of poor white and Black populations may be helpful in this regard.

4.1 Limitations

Our first methodological limitation is the cross-sectional design of the current investigation. Due to a cross-sectional design, no causal link can be made between parental education and thalamus volume. The second limitation is that all our SES indicators were measured at the family level. Other SES indicators such as employment and neighborhood SES were not included. We only described the differential effects of parental education and did not investigate how social adversities, stress, or neighborhood context could explain such MDRs.

5. Conclusions

In summary, parental education is associated with smaller left thalamus volume among White American children. However, these effects are weaker for Black and other/mixed race than White children. These

results are in line with Minorities Diminished Returns (MDRs). Under social stratification, segregation, and racism, Black and other/mixed-race children show weaker SES effects than White children.

Conflicts of Interest: The authors declare no conflict of interest.

Author Funding: Shervin Assari is supported by these NI) grants: 5S21MD000103, D084526-03, D084526-03, CA201415 02, DA035811-05, U54MD008149, U54MD007598, and U54CA229974.

ABCD Funding: The ABCD Study is supported by the National Institutes of Health and additional federal partners under award numbers U01DA041022, U01DA041028, U01DA041048, U01DA041089, U01DA041106, U01DA041117, U01DA041120, U01DA041134, U01DA041148, U01DA041156, U01DA041174, U24DA041123, U24DA041147, U01DA041093, and U01DA041025. A full list of supporters is available at <https://abcdstudy.org/federal-partners.html>. A listing of participating sites and a complete listing of the study investigators can be found at https://abcdstudy.org/Consortium_Members.pdf. ABCD consortium investigators designed and implemented the study and/or provided data but did not necessarily participate in analysis or writing of this report. This manuscript reflects the views of the authors and may not reflect the opinions or views of the NIH or ABCD consortium investigators. The ABCD data repository grows and changes over time. The current paper used the Curated Annual Release 2.0, also defined in NDA Study 634 (<http://doi.org/10.15154/1503209>).

DEAP Funding: DEAP is a software provided by the Data Analysis and Informatics Center of ABCD located at the UC San Diego with generous support from the National Institutes of Health and the Centers for Disease Control and Prevention under award number U24DA041123. The DEAP project information and links to its source code are available under the resource identifier RRID: SCR_016158.

References

- Adriano, F., Spoletini, I., Caltagirone, C., & Spalletta, G. (2010). Updated meta-analyses reveal thalamus volume reduction in patients with first-episode and chronic schizophrenia. *Schizophrenia research*, 123(1), 1-14.
- Alcohol Research: Current Reviews Editorial, S. (2018). NIH's Adolescent Brain Cognitive Development (ABCD) Study. *Alcohol Res*, 39(1), 97. Retrieved from <https://www.ncbi.nlm.nih.gov/pubmed/30557152>
- Anton, M. T., Jones, D. J., & Youngstrom, E. A. (2015). Socioeconomic status, parenting, and externalizing problems in African American single-mother homes: A person-oriented approach. *J Fam Psychol*, 29(3), 405-415. <http://doi.org/10.1037/fam0000086>
- Assari, S. (2017). Unequal Gain of Equal Resources across Racial Groups. *Int J Health Policy Manag*, 7(1), 1-9. <http://doi.org/10.15171/ijhpm.2017.90>
- Assari, S. (2018). Health Disparities due to Diminished Return among Black Americans: Public Policy Solutions. *Social Issues and Policy Review*, 12(1), 112-145. <http://doi.org/10.1111/sipr.12042>

- Assari, S. (2018). Parental Educational Attainment and Mental Well-Being of College Students; Diminished Returns of Blacks. *Brain Sci*, 8(11). <http://doi.org/10.3390/brainsci8110193>
- Assari, S. (2020). Parental Education and Youth Inhibitory Control in the Adolescent Brain Cognitive Development (ABCD) Study: Blacks' Diminished Returns. *Brain Sciences*, 10(5), 312. <https://doi.org/10.3390/brainsci10050312>
- Assari, S., Boyce, S., Bazargan, M., & Caldwell, C. H. (2020). Diminished Returns of Parental Education in Terms of Youth School Performance: Ruling Out Regression Toward the Mean. *Children*.
- Assari, S. (2020). Race, Ethnicity, Family Socioeconomic Status, and Children's Hippocampus Volume. *Res Health Sci*, 5(4), 25-45. <http://doi.org/10.22158/rhs.v5n4p25>
- Assari, S., & Bazargan, M. (2019). Unequal Associations between Educational Attainment and Occupational Stress across Racial and Ethnic Groups. *International journal of environmental research and public health*, 16(19), 3539. <https://doi.org/10.3390/ijerph16193539>
- Assari, S., & Caldwell, C. H. (2018). High Risk of Depression in High-Income African American Boys. *J Racial Ethn Health Disparities*, 5(4), 808-819. <http://doi.org/10.1007/s40615-017-0426-1>
- Assari, S., & Caldwell, C. H. (2019a). Family Income at Birth and Risk of Attention Deficit Hyperactivity Disorder at Age 15: Racial Differences. *Children (Basel)*, 6(1). <http://doi.org/10.3390/children6010010>
- Assari, S., & Caldwell, C. H. (2019b). Parental Educational Attainment Differentially Boosts School Performance of American Adolescents: Minorities' Diminished Returns. *J Family Reprod Health*, 13(1), 7-13. <https://doi.org/10.18502/jfrh.v13i1.1607>
- Assari, S., Boyce, S., & Bazargan, M. (2020a). Subjective Family Socioeconomic Status and Adolescents' Attention: Blacks' Diminished Returns. *Children*, 7(8), 80. <https://doi.org/10.3390/children7080080>
- Assari, S., Boyce, S., & Bazargan, M. (2020b). Subjective Socioeconomic Status and Children's Amygdala Volume: Minorities' Diminish Returns. *NeuroSci*, 1(2), 59-74. <https://doi.org/10.3390/neurosci1020006>
- Assari, S., Boyce, S., Akhlaghipour, G., Bazargan, M., & Caldwell, C. H. (2020). Reward Responsiveness in the Adolescent Brain Cognitive Development (ABCD) Study: African Americans' Diminished Returns of Parental Education. *Brain Sciences*, 10(6), 391. <https://doi.org/10.3390/brainsci10060391>
- Assari, S., Boyce, S., Bazargan, M., & Caldwell, C. H. (2020). African Americans' Diminished Returns of Parental Education on Adolescents' Depression and Suicide in the Adolescent Brain Cognitive Development (ABCD) Study. *European Journal of Investigation in Health, Psychology and Education*, 10(2), 656-668. <https://doi.org/10.3390/ejihpe10020048>

- Assari, S., Boyce, S., Caldwell, C. H., & Bazargan, M. (2020). Minorities' Diminished Returns of Parental Educational Attainment on Adolescents' Social, Emotional, and Behavioral Problems. *Children*, 7(5), 49.
- Assari, S., Caldwell, C. H., & Bazargan, M. (2019). Association Between Parental Educational Attainment and Youth Outcomes and Role of Race/Ethnicity. *JAMA Netw Open*, 2(11), e1916018. <http://doi.org/10.1001/jamanetworkopen.2019.16018>
- Assari, S., Caldwell, C. H., & Mincy, R. (2018). Family Socioeconomic Status at Birth and Youth Impulsivity at Age 15; Blacks' Diminished Return. *Children (Basel)*, 5(5). <http://doi.org/10.3390/children5050058>
- Assari, S., Caldwell, C. H., & Zimmerman, M. A. (2018). Family Structure and Subsequent Anxiety Symptoms; Minorities' Diminished Return. *Brain Sci*, 8(6). <http://doi.org/10.3390/brainsci8060097>
- Auchter, A. M., Hernandez Mejia, M., Heyser, C. J., Shilling, P. D., Jernigan, T. L., Brown, S. A., . . . Dowling, G. J. (2018). A description of the ABCD organizational structure and communication framework. *Dev Cogn Neurosci*, 32, 8-15. <http://doi.org/10.1016/j.dcn.2018.04.003>
- Barbarin, O., Bryant, D., McCandies, T., Burchinal, M., Early, D., Clifford, R., . . . Howes, C. (2006). Children enrolled in public pre-K: The relation of family life, neighborhood quality, and socioeconomic resources to early competence. *Am J Orthopsychiatry*, 76(2), 265-276. <http://doi.org/10.1037/0002-9432.76.2.265>
- Barch, D., Pagliaccio, D., Belden, A., Harms, M. P., Gaffrey, M., Sylvester, C. M., . . . Luby, J. (2016). Effect of Hippocampal and Amygdala Connectivity on the Relationship Between Preschool Poverty and School-Age Depression. *Am J Psychiatry*, 173(6), 625-634. <http://doi.org/10.1176/appi.ajp.2015.15081014>
- Barreto, S. M., de Figueiredo, R. C., & Giatti, L. (2013). Socioeconomic inequalities in youth smoking in Brazil. *BMJ Open*, 3(12), e003538. <http://doi.org/10.1136/bmjopen-2013-003538>
- Baxendale, S., & Heaney, D. (2011). Socioeconomic status, cognition, and hippocampal sclerosis. *Epilepsy Behav*, 20(1), 64-67. <http://doi.org/10.1016/j.yebeh.2010.10.019>
- Boyce, S., Bazargan, M., Caldwell, C. H., Zimmerman, M. A., & Assari, S. (2020). Parental Educational Attainment and Social Environmental of Urban Public Schools in the U.S.: Blacks' Diminished Returns. *Children (Basel)*, 7(5). <http://doi.org/10.3390/children7050044>
- Casey, B. J., Cannonier, T., Conley, M. I., Cohen, A. O., Barch, D. M., Heitzeg, M. M., . . . Workgroup, A. I. A. (2018). The Adolescent Brain Cognitive Development (ABCD) study: Imaging acquisition across 21 sites. *Dev Cogn Neurosci*, 32, 43-54. <http://doi.org/10.1016/j.dcn.2018.03.001>
- Chassin, L., Presson, C. C., Sherman, S. J., & Edwards, D. A. (1992). Parent educational attainment and adolescent cigarette smoking. *J Subst Abuse*, 4(3), 219-234. [https://doi.org/10.1016/0899-3289\(92\)90031-R](https://doi.org/10.1016/0899-3289(92)90031-R)

- Choi, J. K., Wang, D., & Jackson, A. P. (2019). Adverse experiences in early childhood and their longitudinal impact on later behavioral problems of children living in poverty. *Child Abuse Negl*, 98, 104181. <http://doi.org/10.1016/j.chiabu.2019.104181>
- Chozick, B. S. (1983). The behavioral effects of lesions of the hippocampus: A review. *Int J Neurosci*, 22(1-2), 63-80. <http://doi.org/10.3109/00207459308987386>
- Clark, U. S., Miller, E. R., & Hegde, R. R. (2018). Experiences of Discrimination Are Associated With Greater Resting Amygdala Activity and Functional Connectivity. *Biol Psychiatry Cogn Neurosci Neuroimaging*, 3(4), 367-378. <http://doi.org/10.1016/j.bpsc.2017.11.011>
- Collins, K. P., & Cleary, S. D. (2016). Racial and ethnic disparities in parent-reported diagnosis of ADHD: National Survey of Children's Health (2003, 2007, and 2011). *J Clin Psychiatry*, 77(1), 52-59. <http://doi.org/10.4088/JCP.14m09364>
- Danese, A., Moffitt, T. E., Harrington, H., Milne, B. J., Polanczyk, G., Pariante, C. M., . . . Caspi, A. (2009). Adverse childhood experiences and adult risk factors for age-related disease: Depression, inflammation, and clustering of metabolic risk markers. *Arch Pediatr Adolesc Med*, 163(12), 1135-1143. <http://doi.org/10.1001/archpediatrics.2009.214>
- Darvishi, E., Assari, M. J., Farhadian, M., Chavoshi, E., & Ehsani, H. R. (2019). Occupational exposure to mercury vapor in a compact fluorescent lamp factory: Evaluation of personal, ambient air, and biological monitoring. *Toxicol Ind Health*, 35(4), 304-313. <http://doi.org/10.1177/0748233719831531>
- Emmen, R. A., Malda, M., Mesman, J., van Ijzendoorn, M. H., Prevoe, M. J., & Yeniad, N. (2013). Socioeconomic status and parenting in ethnic minority families: Testing a minority family stress model. *J Fam Psychol*, 27(6), 896-904. <http://doi.org/10.1037/a0034693>
- Evans, G. W., Swain, J. E., King, A. P., Wang, X., Javanbakht, A., Ho, S. S., . . . Liberzon, I. (2016). Childhood Cumulative Risk Exposure and Adult Amygdala Volume and Function. *J Neurosci Res*, 94(6), 535-543. <http://doi.org/10.1002/jnr.23681>
- Feldstein Ewing, S. W., Hudson, K. A., Caouette, J., Mayer, A. R., Thayer, R. E., Ryman, S. G., & Bryan, A. D. (2018). Sexual risk-taking and subcortical brain volume in adolescence. *Annals of behavioral medicine*, 52(5), 393-405.
- Fluss, J., Ziegler, J. C., Warszawski, J., Ducot, B., Richard, G., & Billard, C. (2009). Poor reading in French elementary school: The interplay of cognitive, behavioral, and socioeconomic factors. *J Dev Behav Pediatr*, 30(3), 206-216. <http://doi.org/10.1097/DBP.0b013e3181a7ed6c>
- Garavan, H., Bartsch, H., Conway, K., Decastro, A., Goldstein, R. Z., Heeringa, S., . . . Zahs, D. (2018). Recruiting the ABCD sample: Design considerations and procedures. *Dev Cogn Neurosci*, 32, 16-22. <http://doi.org/10.1016/j.dcn.2018.04.004>
- Garces, E., Thomas, D., & Currie, J. (2002). Longer-term effects of Head Start. *American economic review*, 92(4), 999-1012.

- Gerra, G., Benedetti, E., Resce, G., Potente, R., Cutilli, A., & Molinaro, S. (2020). Socioeconomic Status, Parental Education, School Connectedness and Individual Socio-Cultural Resources in Vulnerability for Drug Use among Students. *Int J Environ Res Public Health*, 17(4). <http://doi.org/10.3390/ijerph17041306>
- Gershoff, E. T., Ansari, A., Purtell, K. M., & Sexton, H. R. (2016). Changes in parents' spanking and reading as mechanisms for Head Start impacts on children. *Journal of family psychology*, 30(4), 480.
- Gonzalez, M. R., Palmer, C. E., Uban, K. A., Jernigan, T. L., Thompson, W. K., & Sowell, E. R. (2020). Positive Economic, Psychosocial, and Physiological Ecologies Predict Brain Structure and Cognitive Performance in 9–10-Year-Old Children. *Frontiers in Human Neuroscience*, 14(436). <http://doi.org/10.3389/fnhum.2020.578822>
- Hair, N. L., Hanson, J. L., Wolfe, B. L., & Pollak, S. D. (2015). Association of Child Poverty, Brain Development, and Academic Achievement. *JAMA Pediatr*, 169(9), 822-829. <http://doi.org/10.1001/jamapediatrics.2015.1475>
- Hanson, J. L., Chandra, A., Wolfe, B. L., & Pollak, S. D. (2011). Association between income and the hippocampus. *PLoS One*, 6(5), e18712. <http://doi.org/10.1371/journal.pone.0018712>
- Hanson, J. L., Nacewicz, B. M., Sutterer, M. J., Cayo, A. A., Schaefer, S. M., Rudolph, K. D., . . . Davidson, R. J. (2015). Behavioral problems after early life stress: Contributions of the hippocampus and amygdala. *Biol Psychiatry*, 77(4), 314-323. <http://doi.org/10.1016/j.biopsych.2014.04.020>
- Herrnstein, R. J., & Murray, C. (2010). *The bell curve: Intelligence and class structure in American life*. Simon and Schuster.
- Heshmat, R., Qorbani, M., Ghoreishi, B., Djalalinia, S., Tabatabaie, O. R., Safiri, S., . . . Kelishadi, R. (2016). Association of socioeconomic status with psychiatric problems and violent behaviours in a nationally representative sample of Iranian children and adolescents: The CASPIAN-IV study. *BMJ Open*, 6(8), e011615. <http://doi.org/10.1136/bmjopen-2016-011615>
- Huang, X., Pu, W., Li, X., Greenshaw, A. J., Dursun, S. M., Xue, Z., . . . Liu, Z. (2017). Decreased left putamen and thalamus volume correlates with delusions in first-episode schizophrenia patients. *Frontiers in psychiatry*, 8, 245.
- Jablonska, B., Kosidou, K., Ponce de Leon, A., Wettermark, B., Magnusson, C., Dal, H., & Dalman, C. (2020). Neighborhood Socioeconomic Characteristics and Utilization of ADHD Medication in Schoolchildren: A Population Multilevel Study in Stockholm County. *J Atten Disord*, 24(2), 265-276. <http://doi.org/10.1177/1087054716643257>
- Javanbakht, A., Kim, P., Swain, J. E., Evans, G. W., Phan, K. L., & Liberzon, I. (2016). Sex-Specific Effects of Childhood Poverty on Neurocircuitry of Processing of Emotional Cues: A Neuroimaging Study. *Behav Sci (Basel)*, 6(4). <http://doi.org/10.3390/bs6040028>

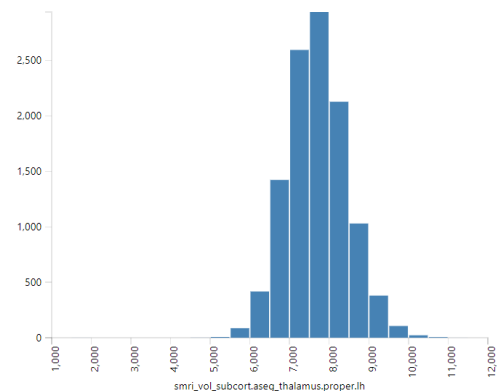
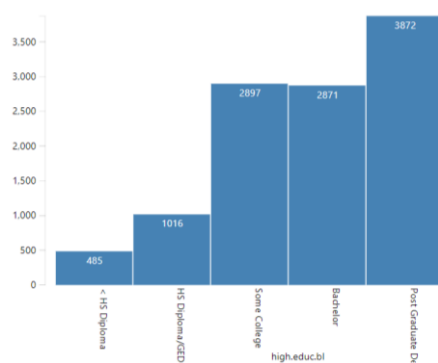
- Javanbakht, A., King, A. P., Evans, G. W., Swain, J. E., Angstadt, M., Phan, K. L., & Liberzon, I. (2015). Childhood Poverty Predicts Adult Amygdala and Frontal Activity and Connectivity in Response to Emotional Faces. *Front Behav Neurosci*, 9, 154. <http://doi.org/10.3389/fnbeh.2015.00154>
- Jenkins, L. M., Chiang, J. J., Vause, K., Hoffer, L., Alpert, K., Parrish, T. B., . . . Miller, G. E. (2020). Subcortical structural variations associated with low socioeconomic status in adolescents. *Hum Brain Mapp*, 41(1), 162-171. <http://doi.org/10.1002/hbm.24796>
- Johnson, S. B., Riis, J. L., & Noble, K. G. (2016). State of the Art Review: Poverty and the Developing Brain. *Pediatrics*, 137(4). <http://doi.org/10.1542/peds.2015-3075>
- Kaleta, D., Usidame, B., Dzionkowska-Zaborszczyk, E., & Makowiec-Dabrowska, T. (2015). Socioeconomic Disparities in Age of Initiation and Ever Tobacco Smoking: Findings from Romania. *Cent Eur J Public Health*, 23(4), 299-305. <http://doi.org/10.21101/cejph.a4067>
- Karcher, N. R., O'Brien, K. J., Kandala, S., & Barch, D. M. (2019). Resting-State Functional Connectivity and Psychotic-like Experiences in Childhood: Results From the Adolescent Brain Cognitive Development Study. *Biol Psychiatry*, 86(1), 7-15. <http://doi.org/10.1016/j.biopsych.2019.01.013>
- Kaufman, J. S., Cooper, R. S., & McGee, D. L. (1997). Socioeconomic status and health in blacks and whites: the problem of residual confounding and the resiliency of race. *Epidemiology*, 621-628.
- Kiang, L., Andrews, K., Stein, G. L., Supple, A. J., & Gonzalez, L. M. (2013). Socioeconomic stress and academic adjustment among Asian American adolescents: the protective role of family obligation. *J Youth Adolesc*, 42(6), 837-847. <http://doi.org/10.1007/s10964-013-9916-6>
- Kim, D. J., Davis, E. P., Sandman, C. A., Glynn, L., Sporns, O., O'Donnell, B. F., & Hetrick, W. P. (2019). Childhood poverty and the organization of structural brain connectome. *Neuroimage*, 184, 409-416. <http://doi.org/10.1016/j.neuroimage.2018.09.041>
- Kim, P., Evans, G. W., Angstadt, M., Ho, S. S., Sripada, C. S., Swain, J. E., . . . Phan, K. L. (2013). Effects of childhood poverty and chronic stress on emotion regulatory brain function in adulthood. *Proc Natl Acad Sci U S A*, 110(46), 18442-18447. <http://doi.org/10.1073/pnas.1308240110>
- Kocaoglu, B., Moschonis, G., Dimitriou, M., Kolotourou, M., Keskin, Y., Sur, H., . . . Manios, Y. (2005). Parental educational level and cardiovascular disease risk factors in schoolchildren in large urban areas of Turkey: Directions for public health policy. *BMC Public Health*, 5, 13. <http://doi.org/10.1186/1471-2458-5-13>
- Ladebauche, P. (1997). Childhood trauma--when to suspect abuse. *RN*, 60(9), 38-42; quiz 43. Retrieved from <https://www.ncbi.nlm.nih.gov/pubmed/9348986>
- Lawson, G. M., Camins, J. S., Wisse, L., Wu, J., Duda, J. T., Cook, P. A., . . . Farah, M. J. (2017). Childhood socioeconomic status and childhood maltreatment: Distinct associations with brain structure. *PLoS One*, 12(4), e0175690. <http://doi.org/10.1371/journal.pone.0175690>

- Lisdahl, K. M., Sher, K. J., Conway, K. P., Gonzalez, R., Feldstein Ewing, S. W., Nixon, S. J., . . . Heitzeg, M. (2018). Adolescent brain cognitive development (ABCD) study: Overview of substance use assessment methods. *Dev Cogn Neurosci*, 32, 80-96. <http://doi.org/10.1016/j.dcn.2018.02.007>
- Luciana, M., Bjork, J. M., Nagel, B. J., Barch, D. M., Gonzalez, R., Nixon, S. J., & Banich, M. T. (2018). Adolescent neurocognitive development and impacts of substance use: Overview of the adolescent brain cognitive development (ABCD) baseline neurocognition battery. *Dev Cogn Neurosci*, 32, 67-79. <http://doi.org/10.1016/j.dcn.2018.02.006>
- Machlin, L., McLaughlin, K. A., & Sheridan, M. A. (2019). Brain structure mediates the association between socioeconomic status and attention-deficit/hyperactivity disorder. *Dev Sci*, e12844. <http://doi.org/10.1111/desc.12844>
- Masten, C. L., Telzer, E. H., & Eisenberger, N. I. (2011). An FMRI investigation of attributing negative social treatment to racial discrimination. *J Cogn Neurosci*, 23(5), 1042-1051. <http://doi.org/10.1162/jocn.2010.21520>
- McDermott, C. L., Seidlitz, J., Nadig, A., Liu, S., Clasen, L. S., Blumenthal, J. D., . . . Patel, R. (2019). Longitudinally mapping childhood socioeconomic status associations with cortical and subcortical morphology. *Journal of Neuroscience*, 39(8), 1365-1373.
- McDermott, C. L., Seidlitz, J., Nadig, A., Liu, S., Clasen, L. S., Blumenthal, J. D., . . . Raznahan, A. (2019). Longitudinally Mapping Childhood Socioeconomic Status Associations with Cortical and Subcortical Morphology. *J Neurosci*, 39(8), 1365-1373. <http://doi.org/10.1523/JNEUROSCI.1808-18.2018>
- McEwen, B. S., & Gianaros, P. J. (2010). Central role of the brain in stress and adaptation: Links to socioeconomic status, health, and disease. *Ann N Y Acad Sci*, 1186, 190-222. <http://doi.org/10.1111/j.1749-6632.2009.05331.x>
- McLean, J., Krishnadas, R., Batty, G. D., Burns, H., Deans, K. A., Ford, I., . . . Cavanagh, J. (2012). Early life socioeconomic status, chronic physiological stress and hippocampal N-acetyl aspartate concentrations. *Behav Brain Res*, 235(2), 225-230. <http://doi.org/10.1016/j.bbr.2012.08.013>
- Mills, K. L., Bathula, D., Costa Dias, T. G., Iyer, S. P., Fenesy, M. C., Musser, E. D., . . . Nagel, B. J. (2012). Altered cortico-striatal-thalamic connectivity in relation to spatial working memory capacity in children with ADHD. *Frontiers in psychiatry*, 3, 2.
- Moadab, G., Bliss-Moreau, E., Bauman, M. D., & Amaral, D. G. (2017). Early amygdala or hippocampus damage influences adolescent female social behavior during group formation. *Behav Neurosci*, 131(1), 68-82. <http://doi.org/10.1037/bne0000181>
- Montagrin, A., Saiote, C., & Schiller, D. (2018). The social hippocampus. *Hippocampus*, 28(9), 672-679. <http://doi.org/10.1002/hipo.22797>

- Moore, G. F., & Littlecott, H. J. (2015). School- and family-level socioeconomic status and health behaviors: multilevel analysis of a national survey in wales, United Kingdom. *J Sch Health, 85*(4), 267-275. <http://doi.org/10.1111/josh.12242>
- Neville, H. J., Stevens, C., Pakulak, E., Bell, T. A., Fanning, J., Klein, S., & Isbell, E. (2013). Family-based training program improves brain function, cognition, and behavior in lower socioeconomic status preschoolers. *Proc Natl Acad Sci U S A, 110*(29), 12138-12143. <http://doi.org/10.1073/pnas.1304437110>
- Noble, K. G., Houston, S. M., Brito, N. H., Bartsch, H., Kan, E., Kuperman, J. M., . . . Libiger, O. (2015). Family income, parental education and brain structure in children and adolescents. *Nature neuroscience, 18*(5), 773.
- Noble, K. G., Houston, S. M., Brito, N. H., Bartsch, H., Kan, E., Kuperman, J. M., . . . Sowell, E. R. (2015). Family income, parental education and brain structure in children and adolescents. *Nat Neurosci, 18*(5), 773-778. <http://doi.org/10.1038/nn.3983>
- Noble, K. G., Houston, S. M., Kan, E., & Sowell, E. R. (2012). Neural correlates of socioeconomic status in the developing human brain. *Dev Sci, 15*(4), 516-527. <http://doi.org/10.1111/j.1467-7687.2012.01147.x>
- Nugent, A. C., Davis, R. M., Zarate Jr, C. A., & Drevets, W. C. (2013). Reduced thalamic volumes in major depressive disorder. *Psychiatry Research: Neuroimaging, 213*(3), 179-185.
- Oshri, A., Hallowell, E., Liu, S., MacKillop, J., Galvan, A., Kogan, S. M., & Sweet, L. H. (2019). Socioeconomic hardship and delayed reward discounting: Associations with working memory and emotional reactivity. *Dev Cogn Neurosci, 37*, 100642. <http://doi.org/10.1016/j.dcn.2019.100642>
- Padilla-Moledo, C., Ruiz, J. R., & Castro-Pinero, J. (2016). Parental educational level and psychological positive health and health complaints in Spanish children and adolescents. *Child Care Health Dev, 42*(4), 534-543. <http://doi.org/10.1111/cch.12342>
- Palma-Coca, O., Hernandez-Serrato, M. I., Villalobos-Hernandez, A., Unikel-Santoncini, C., Olaiz-Fernandez, G., & Bojorquez-Chapela, I. (2011). Association of socioeconomic status, problem behaviors, and disordered eating in Mexican adolescents: results of the Mexican National Health and Nutrition Survey 2006. *J Adolesc Health, 49*(4), 400-406. <http://doi.org/10.1016/j.jadohealth.2011.01.019>
- Parker, N., Wong, A. P., Leonard, G., Perron, M., Pike, B., Richer, L., . . . Paus, T. (2017). Income inequality, gene expression, and brain maturation during adolescence. *Sci Rep, 7*(1), 7397. <http://doi.org/10.1038/s41598-017-07735-2>
- Perkins, S. C., Finegood, E. D., & Swain, J. E. (2013). Poverty and language development: Roles of parenting and stress. *Innov Clin Neurosci, 10*(4), 10-19. Retrieved from <https://www.ncbi.nlm.nih.gov/pubmed/23696954>

- Piccolo, L. R., Merz, E. C., He, X., Sowell, E. R., Noble, K. G., & Pediatric Imaging, N. G. S. (2016). Age-Related Differences in Cortical Thickness Vary by Socioeconomic Status. *PLoS One*, *11*(9), e0162511. <http://doi.org/10.1371/journal.pone.0162511>
- Rosch, K. S., Crocetti, D., Hirabayashi, K., Denckla, M. B., Mostofsky, S. H., & Mahone, E. M. (2018). Reduced subcortical volumes among preschool-age girls and boys with ADHD. *Psychiatry Research: Neuroimaging*, *271*, 67-74.
- Silveira, C. M., Siu, E. R., Anthony, J. C., Saito, L. P., de Andrade, A. G., Kutschenko, A., . . . Andrade, L. H. (2014). Drinking patterns and alcohol use disorders in Sao Paulo, Brazil: the role of neighborhood social deprivation and socioeconomic status. *PLoS One*, *9*(10), e108355. <http://doi.org/10.1371/journal.pone.0108355>
- Sirin, S. R. (2005). Socioeconomic status and academic achievement: A meta-analytic review of research. *Review of educational research*, *75*(3), 417-453.
- Spann, S. J., Gillespie, C. F., Davis, J. S., Brown, A., Schwartz, A., Wingo, A., . . . Ressler, K. J. (2014). The association between childhood trauma and lipid levels in an adult low-income, minority population. *Gen Hosp Psychiatry*, *36*(2), 150-155. <http://doi.org/10.1016/j.genhosppsy.2013.10.004>
- Staff, R. T., Murray, A. D., Ahearn, T. S., Mustafa, N., Fox, H. C., & Whalley, L. J. (2012). Childhood socioeconomic status and adult brain size: Childhood socioeconomic status influences adult hippocampal size. *Ann Neurol*, *71*(5), 653-660. <http://doi.org/10.1002/ana.22631>
- Subic-Wrana, C., Tschan, R., Michal, M., Zwerenz, R., Beutel, M., & Wiltink, J. (2011). Childhood trauma and its relation to diagnoses and psychic complaints in patients of a psychosomatic university ambulance. *Psychother Psychosom Med Psychol*, *61*(2), 54-61. <http://doi.org/10.1055/s-0030-1252047>
- Suchy-Dicey, A., Shibata, D., Cholerton, B., Nelson, L., Calhoun, D., Ali, T., . . . Verney, S. P. (2019). Cognitive Correlates of MRI-defined Cerebral Vascular Injury and Atrophy in Elderly American Indians: The Strong Heart Study. *J Int Neuropsychol Soc*, 1-13. <http://doi.org/10.1017/S1355617719001073>
- Thames, A. D., Kuhn, T. P., Mahmood, Z., Bilder, R. M., Williamson, T. J., Singer, E. J., & Arentoft, A. (2018). Effects of social adversity and HIV on subcortical shape and neurocognitive function. *Brain Imaging Behav*, *12*(1), 96-108. <http://doi.org/10.1007/s11682-017-9676-0>
- Tottenham, N., & Sheridan, M. A. (2009). A review of adversity, the amygdala and the hippocampus: A consideration of developmental timing. *Front Hum Neurosci*, *3*, 68. <http://doi.org/10.3389/neuro.09.068.2009>
- Tsatsanis, K. D., Rourke, B. P., Klin, A., Volkmar, F. R., Cicchetti, D., & Schultz, R. T. (2003). Reduced thalamic volume in high-functioning individuals with autism. *Biological Psychiatry*, *53*(2), 121-129.

- Uban, K. A., Kan, E., Wozniak, J. R., Mattson, S. N., Coles, C. D., & Sowell, E. R. (2020). The Relationship Between Socioeconomic Status and Brain Volume in Children and Adolescents With Prenatal Alcohol Exposure. *Front Hum Neurosci*, *14*, 85. <http://doi.org/10.3389/fnhum.2020.00085>
- Wang, Y., Zhang, L., Kong, X., Hong, Y., Cheon, B., & Liu, J. (2016). Pathway to neural resilience: Self-esteem buffers against deleterious effects of poverty on the hippocampus. *Hum Brain Mapp*, *37*(11), 3757-3766. <http://doi.org/10.1002/hbm.23273>
- Willis, A. W., Schootman, M., Kung, N., Wang, X. Y., Perlmutter, J. S., & Racette, B. A. (2014). Disparities in deep brain stimulation surgery among insured elders with Parkinson disease. *Neurology*, *82*(2), 163-171. <http://doi.org/10.1212/WNL.0000000000000017>
- Woods-Jaeger, B. A., Cho, B., Sexton, C. C., Slagel, L., & Goggin, K. (2018). Promoting Resilience: Breaking the Intergenerational Cycle of Adverse Childhood Experiences. *Health Educ Behav*, *45*(5), 772-780. <http://doi.org/10.1177/1090198117752785>
- Wu, X., Zou, Q., Hu, J., Tang, W., Mao, Y., Gao, L., . . . Yang, Y. (2015). Intrinsic Functional Connectivity Patterns Predict Consciousness Level and Recovery Outcome in Acquired Brain Injury. *J Neurosci*, *35*(37), 12932-12946. <http://doi.org/10.1523/JNEUROSCI.0415-15.2015>
- Yavas, E., Gonzalez, S., & Faselow, M. S. (2019). Interactions between the hippocampus, prefrontal cortex, and amygdala support complex learning and memory. *F1000Res*, *8*. <http://doi.org/10.12688/f1000research.19317.1>
- Young, K. A., Bonkale, W. L., Holcomb, L. A., Hicks, P. B., & German, D. C. (2008). Major depression, 5HTTLPR genotype, suicide and antidepressant influences on thalamic volume. *The British Journal of Psychiatry*, *192*(4), 285-289.
- Young, K. A., Holcomb, L. A., Yazdani, U., Hicks, P. B., & German, D. C. (2004). Elevated neuron number in the limbic thalamus in major depression. *American Journal of Psychiatry*, *161*(7), 1270-1277.
- Zigler, E., & Valentine, J. (1979). *Project Head Start: A legacy of the war on poverty*.



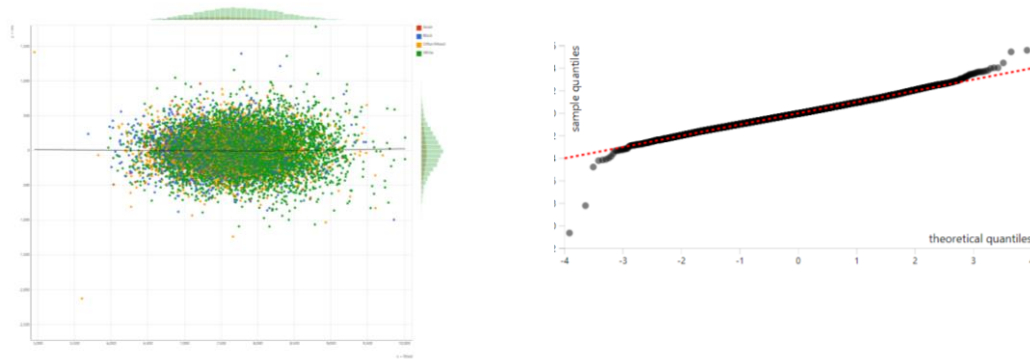


Figure 1. Models Assumptions (Predictor, Outcome, Residuals, Quantiles)

Table 1. Model Formula

Model 1 (All, Overall Effect)

smri_vol_subcort.aseg_thalamus.proper.lh ~ high.educ.bl + smri_vol_subcort.aseg_intracranialvolume
+ race.4level + sex + married.bl + age + hisp

Random: ~(1|rel_family_id)

Model 2 (All, Interaction Effect)

smri_vol_subcort.aseg_thalamus.proper.lh ~ high.educ.bl + smri_vol_subcort.aseg_intracranialvolume
+ race.4level + sex + married.bl + age + hisp + high.educ.bl * race.4level

Random: ~(1|rel_family_id)

Model 3 (Whites)

smri_vol_subcort.aseg_thalamus.proper.lh ~ high.educ.bl + smri_vol_subcort.aseg_intracranialvolume
+ sex + married.bl + age + hisp

Random: ~(1|rel_family_id)

Model 4 (Blacks)

smri_vol_subcort.aseg_thalamus.proper.lh ~ high.educ.bl + smri_vol_subcort.aseg_intracranialvolume
+ race.4level + sex + married.bl + age + hisp

Random: ~(1|rel_family_id)