

# Zanubrutinib for the treatment of MYD88 wild-type Waldenström macroglobulinemia: a substudy of the phase 3 ASPEN trial

Meletios Dimopoulos,<sup>1</sup> Ramon Garcia Sanz,<sup>2</sup> Hui-Peng Lee,<sup>3</sup> Marek Trnety,<sup>4</sup> Marzia Varettoni,<sup>5</sup> Stephen Opat,<sup>6,7</sup> Shirley D'Sa,<sup>8</sup> Roger G. Owen,<sup>9</sup> Gavin Cull,<sup>10,11</sup> Stephen Mulligan,<sup>12</sup> Jaroslaw Czyz,<sup>13,14</sup> Jorge J. Castillo,<sup>15,16</sup> Marina Motta,<sup>17</sup> Tanya Siddiqi,<sup>18</sup> Mercedes Gironella Mesa,<sup>19</sup> Miquel Granell Gorrochategui,<sup>20</sup> Dipti Talaulikar,<sup>21</sup> Pier Luigi Zinzani,<sup>22,23</sup> Elham Askari,<sup>24</sup> Sebastian Grosicki,<sup>25</sup> Albert Oriol,<sup>26</sup> Simon Rule,<sup>27</sup> Janusz Kloczko,<sup>28</sup> Alessandra Tedeschi,<sup>29</sup> Christian Buske,<sup>30</sup> Veronique Leblond,<sup>31</sup> Judith Trotman,<sup>32,33</sup> Wai Y. Chan,<sup>34</sup> Jan Michel,<sup>35</sup> Jingjing Schneider,<sup>34</sup> Ziwen Tan,<sup>36</sup> Aileen Cohen,<sup>34</sup> Jane Huang,<sup>34</sup> and Constantine S. Tam,<sup>37-40</sup> for the ASPEN investigators

<sup>1</sup>Department of Clinical Therapeutics, National and Kapodistrian University of Athens, Athens, Greece; <sup>2</sup>Hospital Universitario de Salamanca, Salamanca, Spain; <sup>3</sup>Department of Haematology, Flinders Medical Centre, Adelaide, SA, Australia; <sup>4</sup>1st Department of Medicine, Faculty of Medicine 1, Charles University, General Hospital, Prague, Czech Republic; <sup>5</sup>Fondazione Istituto di Ricovero e Cura a Carattere Scientifico (IRCCS) Policlinico, San Matteo, Pavia, Italy; <sup>6</sup>Monash Health and <sup>7</sup>Department of Hematology, School of Clinical Sciences, Monash University, Clayton, VIC, Australia; <sup>8</sup>University College London Hospital Foundation Trust, London, United Kingdom; <sup>9</sup>St James University Hospital, Leeds, United Kingdom; <sup>10</sup>Sir Charles Gairdner Hospital, Perth, WA, Australia; <sup>11</sup>Pathology and Laboratory Medicine, University of Western Australia, Perth, WA, Australia; <sup>12</sup>Royal North Shore Hospital, Sydney, NSW, Australia; <sup>13</sup>Szpital Uniwersytecki nr 2, Dr Jana Biziela, Kujawsko-pomorskie, Bydgoszcz, Poland; <sup>14</sup>Department of Hematology, Collegium Medicum in Bydgoszcz, Nicolaus Copernicus University in Toruń, Bydgoszcz, Poland; <sup>15</sup>Bing Center for Waldenström Macroglobulinemia, Dana-Farber Cancer Institute, Boston, MA; <sup>16</sup>Medical Oncology, Harvard Medical School, Boston, MA; <sup>17</sup>AO Spedali Civili di Brescia, Lombardia, Italy; <sup>18</sup>City of Hope National Medical Center, Duarte, CA; <sup>19</sup>Hospital Universitario Vall d'Hebrón, Barcelona, Spain; <sup>20</sup>Hospital de La Santa Creu i Sant Pau, Barcelona, Spain; <sup>21</sup>The John Curtin School of Medical Research, Australian National University, Canberra, ACT, Australia; <sup>22</sup>Azienda Ospedaliero-Universitaria di Bologna, Bologna, Italy; <sup>23</sup>Istituto di Ematologia "Seràgnoli," Dipartimento di Medicina Specialistica, Diagnostica e Sperimentale Università degli Studi, Bologna, Italy; <sup>24</sup>Hospital Universitario Fundación Jiménez Díaz, Madrid, Spain; <sup>25</sup>Department of Hematology and Cancer Prevention, Health Sciences Faculty, Medical University of Silesia, Katowice, Poland; <sup>26</sup>Institut Català d'Oncologia-Hospital Universitari Germans Trias i Pujol, Barcelona, Spain; <sup>27</sup>Plymouth Hospitals National Health Service (NHS) Trust, Derriford Hospital, Devon, United Kingdom; <sup>28</sup>Uniwersytecki Szpital Kliniczny w Białymstoku, Podlaskie, Poland; <sup>29</sup>ASST Grande Ospedale Metropolitano Niguarda, Milan, Italy; <sup>30</sup>Comprehensive Cancer Center (CCC) Ulm, Universitätsklinikum Ulm, Baden-Württemberg, Germany; <sup>31</sup>Clinical Hematology Department, Sorbonne University, Pitié Salpêtrière Hospital, Paris, France; <sup>32</sup>Concord Repatriation General Hospital, Sydney, Concord, NSW, Australia; <sup>33</sup>Concord Repatriation General Hospital, Department of Haematology, University of Sydney, Concord, NSW, Australia; <sup>34</sup>BeiGene USA, Inc., San Mateo, CA; <sup>35</sup>BeiGene Switzerland GmbH, Basel, Switzerland; <sup>36</sup>BeiGene (Beijing) Co., Ltd, Beijing, China; <sup>37</sup>Peter MacCallum Cancer Centre, Melbourne, VIC, Australia; <sup>38</sup>St Vincent's Hospital, Fitzroy, VIC, Australia; <sup>39</sup>Faculty of Medicine, Dentistry and Health Sciences, University of Melbourne, Parkville, VIC, Australia; and <sup>40</sup>Royal Melbourne Hospital, Parkville, VIC, Australia

## Key Points

- Patients with *MYD88*<sup>WT</sup> WM treated with zanubrutinib achieved a 50% major response rate (including 27% VGPRs) and 18-month PFS rate of 68%.
- The safety profile of zanubrutinib was consistent with previous studies in WM, including a low incidence of cardiovascular toxicity.

Patients with Waldenström macroglobulinemia (WM) lacking activating mutations in the *MYD88* gene (*MYD88*<sup>WT</sup>) have demonstrated relatively poor outcomes to ibrutinib monotherapy, with no major responses reported in a phase 2 pivotal study. Zanubrutinib is a novel, selective Bruton tyrosine kinase (BTK) inhibitor designed to maximize BTK occupancy and minimize off-target activity. The ASPEN study consisted of a randomized comparison of zanubrutinib and ibrutinib efficacy and safety in patients with WM who have the *MYD88* mutation, as well as a separate cohort of patients without *MYD88* mutation (*MYD88*<sup>WT</sup>) or with unknown mutational status who received zanubrutinib. Results from the latter single-arm cohort are reported herein. Efficacy endpoints included overall, major and complete (CR) or very good partial response (VGPR) rates, progression-free survival (PFS), duration of response (DOR), and overall survival (OS). Twenty-eight patients (23 relapsed/refractory; 5 treatment-naïve) were enrolled, including 26 with centrally confirmed *MYD88*<sup>WT</sup> disease and 2 with unknown *MYD88* mutational status. At a median follow-up of 17.9 months, 7 of 26 *MYD88*<sup>WT</sup> patients (27%) had achieved a VGPR and 50% a major response (partial response or better); there were no CRs. At 18 months, the estimated PFS and OS rates were 68% and 88%, respectively, while the median DOR had not been reached.

Submitted 21 July 2020; accepted 9 October 2020; published online 7 December 2020. DOI 10.1182/bloodadvances.2020003010.

Presented in part at the 25th Congress of the European Hematology Association, 11-14 June 2020.

All authors had access to original data for the analyses. For the original data, please contact the senior author at mdimop@med.uoa.gr. Individual participant data will not be shared.

The full-text version of this article contains a data supplement.

© 2020 by The American Society of Hematology

Two patients discontinued zanubrutinib due to adverse events. Treatment-emergent hypertension, atrial fibrillation, and major hemorrhages were reported in 3, 1 and 2 patients (including 1 concurrent with enoxaparin therapy), respectively. Results of this substudy demonstrate that zanubrutinib monotherapy can induce high quality responses in patients with *MYD88*<sup>WT</sup> WM. This trial is registered on [www.clinicaltrials.gov](http://www.clinicaltrials.gov) as NCT #03053440.

## Introduction

Waldenström macroglobulinemia (WM) is a B-cell malignancy characterized by bone marrow infiltration with monoclonal, immunoglobulin M (IgM)-secreting, lymphoplasmacytic cells that exhibit constitutive activation of the B-cell receptor signaling complex, of which Bruton tyrosine kinase (BTK) is a critical component.<sup>1-3</sup> Activating mutations involving the adaptor protein *MYD88*, almost all involving the substitution of proline for leucine at amino acid position 265 (*MYD88*<sup>MUT</sup>), have been reported in >90% of patients,<sup>1</sup> with 30% to 40% reporting an additional frameshift or nonsense mutation in the carboxy-terminal (regulatory) domain of the chemokine receptor, *CXCR4* (*CXCR4*<sup>WHIM</sup>). The presence of one or both mutations impacts clinical presentation, prognosis and response to targeted therapies, in particular, BTK inhibitors.<sup>4</sup> The first-in-class BTK inhibitor, ibrutinib, has demonstrated significant activity in patients with WM. In a phase 2 study of 63 ibrutinib-treated patients with relapsed/refractory (R/R) WM and unselected *MYD88* mutational status, the major response rate (MRR; partial response or better) was 78%, including 27% of patients with very good partial responses (VGPRs) after a median treatment duration of 47 months,<sup>5</sup> and in a companion study of 30 treatment-naïve (TN) patients (all with *MYD88*<sup>MUT</sup> disease) the MRR was 83%, including 20% of patients with VGPRs, after a median treatment duration of 13.4 months.<sup>6</sup>

In contrast to the favorable outcomes observed in patients with *MYD88*<sup>MUT</sup> disease, results for ibrutinib-treated patients with wild-type *MYD88* (*MYD88*<sup>WT</sup>) tumors, while limited, have been poor. Of 5 patients with *MYD88*<sup>WT</sup> disease enrolled to the above-mentioned phase 2 study, none achieved a major response.<sup>7</sup> The median progression-free survival (PFS) for this subset of patients was only 21 months, compared with 45 months and not reached for patients with *MYD88*<sup>MUT</sup>/*CXCR4*<sup>WHIM</sup> and *MYD88*<sup>MUT</sup>/*CXCR4*<sup>WT</sup> disease, respectively.<sup>5</sup> A single patient with *MYD88*<sup>WT</sup> enrolled in the iNNOVATE substudy (ibrutinib monotherapy) also did not achieve a major response.<sup>8</sup> In a study of a more selective BTK inhibitor, acalabrutinib, 9 (64%) of 14 patients with *MYD88*<sup>WT</sup> disease achieved a partial response with no VGPRs or complete responses (CRs).<sup>9</sup> Genomic studies in patients with *MYD88*<sup>WT</sup> disease revealed important differences from those with *MYD88*<sup>MUT</sup> disease, most notably, the presence of somatic mutations that activate NFκB downstream of Myddosome-mediated BTK activation.<sup>4,10</sup>

The number of studies comparing responses between *MYD88*<sup>WT</sup> and *MYD88*<sup>MUT</sup> patients to immunochemotherapy combinations are limited. Despite comparable MRRs achieved in both *MYD88*<sup>WT</sup> and *MYD88*<sup>MUT</sup> patients by immunochemotherapy combinations (with or without BTKi), the median PFS estimated for WM patients with *MYD88*<sup>WT</sup> compared less favorably to *MYD88*<sup>MUT</sup> with the caveat of small sample sizes.<sup>11-13</sup>

Zanubrutinib is a novel, potent BTK inhibitor that exhibits sustained BTK inhibition in both peripheral blood mononuclear cells and target tissues at the recommended dose of 160 mg twice daily.<sup>14-16</sup> In a phase 1/2 study of patients with various B-cell malignancies, 45% of 73 patients with WM who were treated with zanubrutinib achieved a VGPR or CR and 82% achieved a major response after a median follow-up of 30.3 months.<sup>17</sup> Among patients with known *MYD88*<sup>WT</sup> disease, 5 (62.5%) of 8 achieved a major response, including one patient who achieved a CR. These preliminary data suggested that zanubrutinib could be a favorable therapeutic option for patients with both *MYD88*<sup>MUT</sup> and *MYD88*<sup>WT</sup> disease.

The ASPEN trial is an open-label, multicenter, phase 3 study in patients with WM requiring treatment. Cohort 1 is a randomized (1:1) comparison of ibrutinib and zanubrutinib in patients with *MYD88*<sup>L265P</sup> mutated tumors, the results for which are reported separately.<sup>18</sup> In light of the relatively poor reported outcomes for ibrutinib-treated patients as well as the aforementioned early positive results for zanubrutinib, patients assessed as having *MYD88*<sup>WT</sup> disease or those with unknown/inconclusive *MYD88* mutational status were assigned to receive zanubrutinib in a separate single-arm substudy (Cohort 2). Efficacy and safety results in this cohort of patients treated with zanubrutinib are reported herein.

## Methods

### Study design and patients

Eligible patients had confirmed R/R WM after ≥1 prior line of therapy or were treatment-naïve (TN) and deemed unsuitable for standard immunochemotherapy based on the presence of documented comorbidities and/or risk factors (eg, age, cardiac, renal or pulmonary comorbidities, infection or others). Patients were required to meet at least one criterion for treatment per International Workshop on Waldenström macroglobulinemia (IWWM) guidelines,<sup>19</sup> have measurable disease (immunoglobulin M >5 g/L), adequate end-organ function and absolute neutrophil and platelet counts of ≥0.75 × 10<sup>9</sup>/L and ≥50 × 10<sup>9</sup>/L, respectively. Patients with prior BTK inhibitor exposure, disease transformation, active central nervous system (CNS) involvement, clinically significant cardiovascular disease, or who required warfarin or another vitamin K antagonist were excluded. All patients received 160 mg zanubrutinib twice daily in 28-day cycles until disease progression or intolerance. Treatment modifications for toxicity are outlined in supplemental Table 1. Treatment interruption for ≤2 consecutive cycles and/or ≤2 dose reductions were permitted for management of grade 3/4, treatment-related toxicities.

The trial was approved by the independent institutional review board or independent ethics committee at each study site and conducted in accordance with applicable regulatory

requirements, the principles of the Declaration of Helsinki and Good Clinical Practice guidelines of the International Conference on Harmonization. All patients provided written informed consent. The ASPEN study is registered at [www.clinicaltrials.gov](http://www.clinicaltrials.gov) as NCT#03053440.

## Assessments

Bone marrow aspiration and biopsy were collected at baseline, Week 48, and as clinically indicated thereafter (including for confirmation of CR). Bone marrow aspirates were evaluated at baseline for the presence of *MYD88* and *CXCR4* mutations in a central laboratory (NeoGenomics, Aliso Viejo, CA).<sup>18,20,21</sup> *MYD88* mutational status was analyzed without CD19+ cell selection using a proprietary assay that employs locked oligonucleotides to block amplification of *MYD88*<sup>WT</sup> DNA during PCR followed by bidirectional Sanger sequencing of the amplicon.<sup>22</sup> This approach captures *MYD88* L265P mutation with a ~0.5% limit of detection. Mutations in *CXCR4* were detected using PCR, followed by bidirectional Sanger sequencing of the amplicon in non-CD19+ selected bone marrow aspirates. The lower limit of assay sensitivity allows detection of 10% to 15% mutant alleles in a background of wild-type allele, and detects nonsense, frameshift, and other mutations spanning amino acids L301 to S352. Using this assay, mutations from T318 to S341 were identified in this study, which includes almost the full range of *CXCR4*<sup>WHIM</sup> mutations previously reported.<sup>23,24</sup>

Quantitative serum immunoglobulins (IgM, IgG, IgA), M-paraprotein and  $\beta$ 2-microglobulin levels were measured at baseline, the beginning of each cycle until Cycle 12, and every 3 cycles thereafter. Either contrast-enhanced computed tomography (CT) or magnetic resonance imaging (MRI) scans were performed at baseline; patients with extramedullary disease (EMD) had follow-up scans every 3 cycles until Cycle 12 and every 6 cycles thereafter until progression. Electrocardiograms were performed on Day 1 of Cycles 1 and 2, every 4 cycles thereafter and at end of treatment.

## Outcomes

As the cohort 2 substudy of ASPEN was exploratory in nature, there was no pre-specified primary efficacy endpoint. Efficacy end points of interest included the proportion of patients who achieved a CR or VGPR, MRR (partial response or better), ORR (minor response or better), and time-to-event endpoints (PFS, duration of response [DOR], and overall survival [OS]), with responses as assessed by independent review (PAREXEL Informatics, Waltham, MA) and study site investigators in accordance with consensus criteria defined by the 6th IWWM (IWWM-6)<sup>25</sup> (supplemental Table 2) as well as on the basis of reductions in IgM levels alone. Responses were assessed every 28 days and every 84 days after Cycle 12.

Adverse events (AEs), including AEs of interest (AEI) based on the known toxicity profile for the class of BTK inhibitors (eg, atrial fibrillation/flutter, hemorrhage including major hemorrhage, hypertension, infections including opportunistic infections), second primary malignancies, tumor lysis syndrome and peripheral blood cytopenia, were assessed for severity in accordance with the National Cancer Institute Common Toxicity Criteria, Version 4.03. Verbatim AE descriptions were coded to Medical Dictionary for Regulatory Activity (MedDRA) preferred terms. MedDRA event

terms that qualified for inclusion in each category of AEI are summarized in supplemental Table 3.

## Statistical analysis

The efficacy analysis set includes the 26 patients with centrally confirmed *MYD88*<sup>WT</sup> disease. Summaries of response rates and time-to-event endpoints employed descriptive statistics. Two-sided, 95% CIs for each category of response (CR/VGPR, MRR, and ORR) were estimated using the Clopper-Pearson method. Patients with missing response assessments were considered non-responders. PFS, defined as the time from enrollment until progression or death, was estimated using Kaplan-Meier (K-M) methodology with censoring. Two-sided, 95% CIs for median PFS were estimated using the Brookmeyer and Crowley method.<sup>26</sup> PFS rates at selected time points were estimated using the K-M method, with corresponding 95% CIs estimated using Greenwood's Formula.<sup>27</sup> DOR, defined as the time from initial qualifying response until progression or death, was summarized using analysis methods similar to those for PFS. Duration of follow-up for PFS and DOR was estimated using the reverse K-M method. OS was measured as the time from initial study treatment until death.

## Results

### Patient characteristics and disposition

Between January 2017 and July 2018, 229 patients who met consensus criteria for a diagnosis of WM<sup>28,29</sup> were enrolled from 58 study sites. Of these, 28 patients were assigned to cohort 2 based on *MYD88* mutational status: 26 had documented *MYD88*<sup>WT</sup> disease and 2 had unknown *MYD88* mutational status due to insufficient bone marrow aspirate for mutation detection. The median age was 72 years; 12 (43%) patients were >75 years old (Table 1). Twenty-three patients had R/R disease and 5 were TN. Most were in the intermediate- (39%) or high-risk (43%) prognostic category by the WM International Prognostic Scoring System (IPSS)<sup>30</sup> and 54% were anemic (hemoglobin  $\leq$  110 g/L) at baseline. The median times from initial diagnosis to initiation of zanubrutinib were 1.5 years (range, 0.1-12.4) for TN patients and 4.0 years (range, 0.5-20.3) for R/R patients. Most (87%) R/R patients received 1-3 prior lines of therapy. Among R/R patients, 95% had at least one prior therapy including anti-CD20 monoclonal antibodies (rituximab or ofatumumab) and/or an alkylating agent (cyclophosphamide, chlorambucil, bendamustine, ifosfamide, lomustine, melphalan, cisplatin); 73.9% had at least one prior therapy including a corticosteroid (dexamethasone, prednisone, prednisolone, hydrocortisone, methylprednisone). Eleven of 23 patients (48%) had a major response to their last therapy including 1 CR and 3 VGPRs, 7 had no response (SD/PD), and for 4 patients, the best response was unknown. Two patients (4%) had a history of atrial fibrillation, and 10 (36%) reported a history of hypertension.

As of 31 August 2019, the median duration of follow-up was 17.9 months, with 17 (61%) patients continuing study treatment at data cutoff. Six patients discontinued zanubrutinib for progressive disease, 2 due to AEs, and 3 due to investigator decision or withdrawal of consent (supplemental Figure 1). There were no reports of disease transformation at the time of this analysis. Median treatment duration was 16.4 months (18.6 months for TN, 16.3 months for R/R patients). Nineteen (68%) patients (3 TN,

**Table 1. Baseline demographic and disease characteristics**

Characteristic	Treatment-naïve (n = 5)	Relapsed/refractory (n = 23)	Overall (N = 28)
<b>Median age (min, max), y</b>	81 (71, 87)	71 (39, 87)	72 (39, 87)
>75 y, n (%)	4 (80)	8 (35)	12 (43)
Male, n (%)	3 (60)	11 (48)	14 (50)
<b>ECOG PS, n (%)</b>			
0/1	4 (80)	20 (87)	24 (86)
2	1 (20)	3 (13)	4 (14)
<b>Prognostic category at study entry, n (%)*</b>			
Low	0	5 (22)	5 (18)
Intermediate	3 (60)	8 (35)	11 (39)
High	2 (40)	10 (44)	12 (43)
Median time from initial diagnosis (min, max), y	1.5 (0.1, 12.4)	4.0 (0.5, 20.3)	3.7 (0.1, 20.3)
<b>Median prior lines of therapy, n (min, max)</b>	0 (0, 0)	1 (1, 5)	1 (0, 5)
0, n (%)	5 (100)	0	5 (18)
1-3, n (%)	0	20 (87)	20 (71)
>3, n (%)	0	3 (13)	3 (11)
Prior stem cell transplant, n (%)	0	1 (4)	1 (4)
<b>Median IgM (min, max), g/L†</b>	36.1 (13.8, 73.4)	28.5 (5.6, 69.9)	28.5 (5.6, 73.4)
≥40 g/L, n (%)	2 (40)	6 (26)	8 (29)
<40 g/L, n (%)	2 (40)	17 (74)	19 (68)
Missing, n (%)	1 (20)	0	1 (4)
<b>Median β2-microglobulin, mg/L (min, max)</b>	3.7 (2.2, 8.1)	3.8 (1.7, 13.7)	3.8 (1.7, 13.7)
>3 mg/L, n (%)	3 (60)	17 (74)	20 (71)
<b>MYD88/CXCR4 genotype, n (%)</b>			
MYD88 <sup>WT</sup> /CXCR4 <sup>WT</sup>	5 (100)	18 (78)	23 (82)
MYD88 <sup>WT</sup> /CXCR4 <sup>WHIM</sup>	0	1 (4)	1 (4)
MYD88 <sup>WT</sup> /CXCR4 <sup>UNK</sup>	0	2 (9)	2 (7)
MYD88 <sup>UNK</sup> /CXCR4 <sup>UNK</sup>	0	2 (9)	2 (7)
<b>Bone marrow involvement, n (%)</b>	4 (80)	22 (96)	26 (93)
Median percent tumor cells (min, max)	13 (0, 70)	25 (0, 90)	23 (0, 90)
<b>Extramedullary disease, n (%)‡</b>	4 (80)	17 (74)	21 (75)
Lymphadenopathy	4 (80)	16 (70)	20 (71)
Splenomegaly	1 (20)	5 (22)	6 (21)
Other	0	0	0
<b>Peripheral blood cytopenias</b>			
Hemoglobin ≤110 g/L, n (%)	3 (60)	12 (52)	15 (54)
Platelet count ≤100 × 10 <sup>9</sup> /L, n (%)	0	3 (13)	3 (11)
Absolute neutrophil count ≤1.5 × 10 <sup>9</sup> /L, n (%)	1 (20)	0	1 (4)

Percentages may not total 100 due to rounding.

CXCR4, chemokine receptor 4; ECOG PS, Eastern Cooperative Oncology Group performance status; max, maximum; min, minimum; WHIM, warts, hypogammaglobulinemia, infections, and myelokathexis; WT, wild-type.

\*Per Morel et al,<sup>30</sup> patients were assigned 1 point for each of the following baseline characteristics: age, >65 y; hemoglobin ≤11.5 g/dL; platelet count ≤100 × 10<sup>9</sup>/L; β2 microglobulin level >3 mg/L; and M paraprotein levels >7.0 g/dL. Patients with a score of 0 or 1 (excepting age) were assigned to the low-risk category, those >65 y or with a score of 2 were assigned to the intermediate-risk category, and those with a score ≥3 were assigned to the high-risk category. M-paraprotein levels were quantitated by serum protein electrophoresis.

†Central laboratory nephelometric assessments; n = 4 for the TN subset.

‡Based on imaging studies, as assessment by independent review. Lymphadenopathy was defined as the presence of lymph nodes with a long axis of more than 1.5 cm. Splenomegaly was defined as a spleen depth (cranial to caudal) of more than 13 cm.

16 R/R) had ≥12 months of zanubrutinib exposure. The median relative treatment intensity was 97% (range, 51-100).

## Efficacy

After a median follow-up of 17.9 months, the median PFS and OS for MYD88<sup>WT</sup> patients treated with zanubrutinib have not been

reached. The estimated PFS and OS rates at 18 months were 68% and 88%, respectively (Table 2; Figure 1). Among the 26 patients with confirmed MYD88<sup>WT</sup> disease, 7 (27%), 13 (50%) and 21 (81%) achieved a VGPR, major response and overall response, respectively, per modified IWWM-6 consensus criteria (supplemental Table 2). No patient achieved a CR (Table 2). Overall

**Table 2. IRC-assessed efficacy outcomes per modified IWWM-6 consensus criteria**

	Treatment-naïve (n = 5)	Relapsed/refractory (n = 21)	Overall (N = 26)
<b>Best overall response, n (%)</b>			
VGPR	1 (20)	6 (29)	7 (27)
PR	1 (20)	5 (24)	6 (23)
MR	2 (40)	6 (29)	8 (31)
SD	1 (20)	3 (14)	4 (15)
PD	0	1 (5)	1 (4)
<b>Response rates, % (95% CI)*</b>			
VGPR or CR rate	20 (1, 72)	29 (11, 52)	27 (12, 48)
MRR	40 (5, 85)	52 (30, 74)	50 (30, 70)
ORR	80 (28, 100)	81 (58, 95)	81 (61, 93)
<b>Duration of overall response, % (95% CI)†</b>			
6-mo event-free rate	100	88 (60, 97)	90 (66, 98)
12-mo event-free rate	50 (6, 85)	74 (44, 89)	68 (42, 84)
<b>Duration of CR/VGPR, % (95% CI)†</b>			
6-mo event-free rate	100	100	100
12-mo event-free rate	0	100	75 (13, 96)
<b>Duration of major response, % (95% CI)†</b>			
6-mo event-free rate	100	89 (43, 98)	91 (51, 99)
12-mo event-free rate	0	78 (37, 94)	62 (28, 84)
<b>Progression-free survival, % (95% CI)†</b>			
12-mo event-free rate	80 (20, 97)	71 (46, 86)	72 (51, 86)
18-mo event-free rate	60 (13, 88)	71 (46, 86)	68 (46, 83)
<b>Overall survival, % (95% CI)†</b>			
12-mo event-free rate	100	95 (71, 99)	96 (76, 99)
18-mo event-free rate	80 (20, 97)	90 (65, 97)	88 (67, 96)

Percentages are based on N, the number of randomized patients.

CI, confidence interval; CR, complete response; IRC, independent review committee; MR, minimal response; MRR, major response rate; ORR, overall response rate; PD progressive disease; PR, partial response; R/R, relapsed or refractory; SD, stable disease; VGPR, very good partial response.

\*95% CIs estimated using the Clopper-Pearson method.

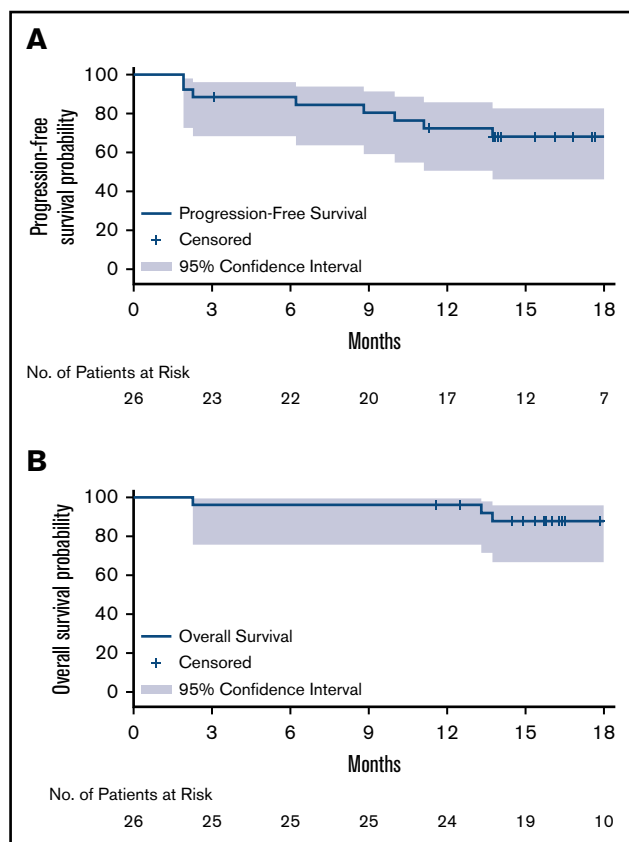
†Event-free rates were estimated by Kaplan-Meier methodology with 95% CIs estimated using Greenwood's formula.

response was achieved in 80% and 81% of TN and R/R patients, respectively. The median times to overall response, major response and VGPR were 1.0 month, 2.9 months, and 5.7 months, respectively. The median DOR has not been reached for patients with an overall response, major response or VGPR/CR (Table 2; Figure 2). The concordance rate between IRC- and investigator-assessed best response was 88%. Response rates based on serum IgM reductions alone were similar, with 31%, 54% and 81% of patients having achieved a CR/VGPR, major response and overall response, respectively (supplemental Table 4). The concordance rate for IRC-assessed best response based on IWWM-6 consensus criteria and IgM reductions alone was 92%.

Median maximal reduction in serum IgM levels from baseline was 56% (25th, 75th percentile: 86%, 37%) (Figure 3A) while the median maximal increase in hemoglobin concentration was 19% (25th, 75th percentile: 11%, 24%) (Figure 3B). Seventy-nine percent of patients with CT/MRI evidence of lymphadenopathy and/or splenomegaly at baseline (n = 19) exhibited at least partial reductions in EMD burden.

## Safety

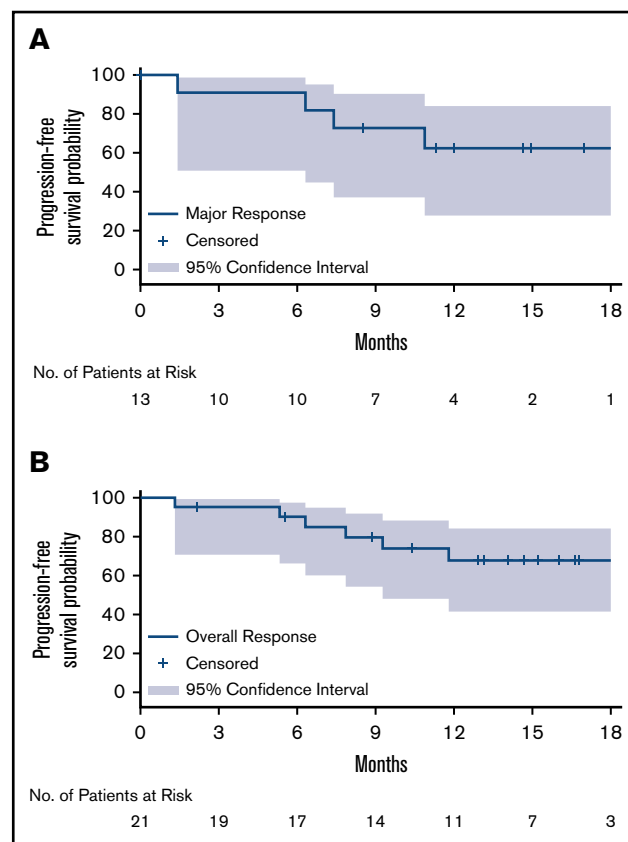
Overall, 24 of 28 (85.7%) patients had experienced at least one treatment-emergent AE. AEs reported in  $\geq 20\%$  of patients were diarrhea, upper respiratory tract infection, contusion, pyrexia, and anemia (Table 3). Grade 3 and serious AEs were reported in 18 (64%) and 11 (39%) patients, respectively. Grade 3 AEs reported in at least 5% of patients were neutropenia, anemia, hypertension (11% each), thrombocytopenia, diarrhea, respiratory tract infection, pneumonia and hyponatremia (7% each). The only serious AEs reported in more than 1 patient was pneumonia (in 3 patients), cellulitis and respiratory tract infection (each in 2 patients). At least 1 AEI was reported in 23 (82%) patients. Infections were the most common category of AEIs, with at least 1 infection reported in 75% of patients (Table 3). These were primarily mucosal infections involving the respiratory and urinary tracts, and in 3 of 5 and 4 of 4 patients respectively, were grade 1 or 2. Eight (29%) patients experienced at least 1 Grade  $\geq 3$  infection, with pneumonia (n = 2) and respiratory tract infection (n = 2) being most common. No patient reported opportunistic infection. Eleven (39%) patients experienced at least 1 occurrence of hemorrhage; 9 patients with



**Figure 1. Kaplan-Meier curves for survival probability.** PFS (A) and OS (B). Kaplan-Meier distribution for PFS is based on IRC-assessed responses for both relapsed/refractory and treatment-naïve patients.

maximum severity of grade 1 ( $n = 7$ ) or grade 2 ( $n = 2$ ). Grade 1 contusion ( $n = 6$ ) and grade 1 hemoptysis ( $n = 2$ ) were the only bleeding events reported in more than 1 patient. Major hemorrhages (grade  $\geq 3$ , or central nervous system hemorrhage of any grade) were reported in 2 (7.1%) patients, 1 with periorbital (grade 3) and subdural hematoma/hemorrhage (grade 4) resulting from a fall and in a second patient with bleeding originating from a gastric ulcer (grade 3) in the setting of concurrent enoxaparin therapy. Atrial fibrillation was reported in 1 patient, an 83-year-old female who presented with a grade 1 event coincident with an infection and that resolved within 1 day without intervention or study treatment modification. This patient had no prior history of atrial fibrillation or flutter nor other risk factors apart from her advanced age. Grade 3 hypertension was reported in 3 (11%) patients, 2 of whom had a history of hypertension. Four patients developed second primary malignancies while on study, all of which were skin cancers (3 with basal cell carcinomas and 1 with penile intraepithelial carcinoma).

One patient, an 87-year-old female with a history of hypertension, cryoglobulinemia and vasculitis, developed heart failure 31 days after the last dose of zanubrutinib and died approximately 1 month later from complications thereof. Her death was assessed as unrelated to zanubrutinib. Two additional patients died during the study, one from complications of PD and the other while asleep from unknown cause(s) 11 months after the last dose. Two patients

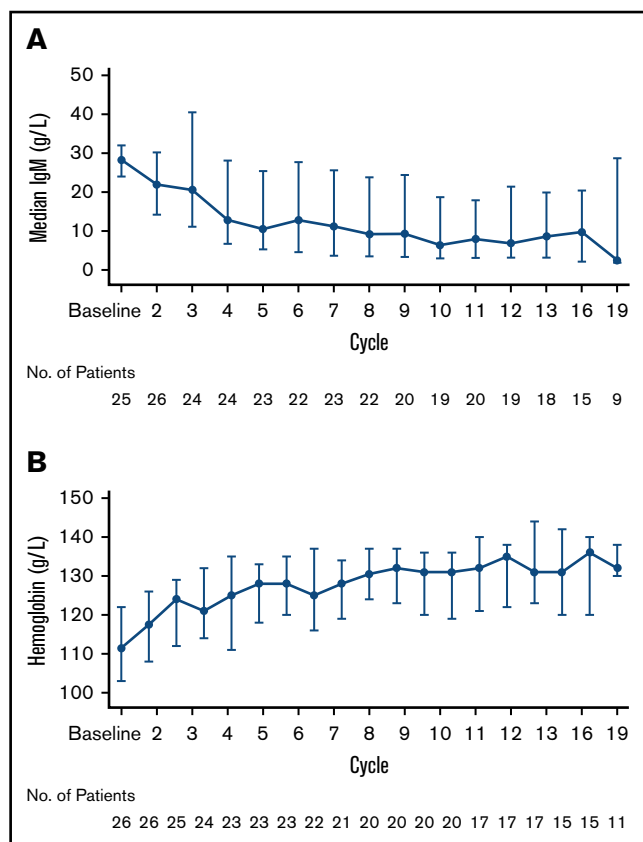


**Figure 2. Kaplan-Meier curves for duration of response.** Major response (A) and overall response (B). Kaplan-Meier distributions, based on IRC-assessed responses for both relapsed/refractory and treatment-naïve patients.

discontinued study treatment of AEs (1 for the aforementioned subdural hematoma/hemorrhage and 1 for grade 3 diarrhea), both assessed as treatment-related. Two patients required dose reductions, 1 for management of grade 1 diarrhea and, in a second patient, coincident with the development of grade 3 pneumonitis on study day 105 and a second dose reduction for grade 2 pneumonia on study day 316.

## Discussion

Approximately 3% to 7% of patients with WM harbor tumors that lack an activating mutation in *MYD88*.<sup>4</sup> These patients exhibit a natural history, genomic profiles and response to treatment that vary from those with *MYD88*<sup>MUT</sup> disease, leading some to suggest that they represent a unique clinicopathologic entity.<sup>4,10,31,32</sup> Retrospective studies indicate that *MYD88*<sup>WT</sup> patients exhibit a greater tendency to undergo transformation to aggressive lymphoma; indeed, many exhibit somatic mutations that overlap with those found in diffuse large B-cell lymphoma.<sup>4,10,31,32</sup> In at least one relatively large series, *MYD88*<sup>WT</sup> patients exhibited shorter overall survival in comparison with patients with *MYD88*<sup>MUT</sup> disease, in part due to their greater propensity for disease transformation.<sup>32</sup> Almost all patients with *MYD88*<sup>WT</sup> WM are also *CXCR4*<sup>WT</sup> although in one series, 4 (8.7%) of 46 patients with *MYD88*<sup>WT</sup> WM had frameshift mutations in *CXCR4*.<sup>32</sup> In light of their relatively poor outcomes following treatment with single-agent



**Figure 3. Changes in blood levels.** Serum IgM levels (A) and hemoglobin concentrations (B) over time.

ibrutinib, patients with *MYD88*<sup>WT</sup> WM represent an unmet medical need in the era of targeted therapies.

Our study provides clear evidence that single-agent zanubrutinib is effective in patients with *MYD88*<sup>WT</sup> WM. Consistent with preliminary results from phase 1/2 studies,<sup>17</sup> zanubrutinib induced VGPRs or better in 27% of *MYD88*<sup>WT</sup> patients in this substudy (31% based on IgM response alone). This rate is comparable to that reported for R/R and TN patients with *MYD88*<sup>MUT</sup> disease treated with zanubrutinib (29% and 26%, respectively).<sup>18</sup> Furthermore, the rate of VGPRs reported herein was identical to that reported for the combination of ibrutinib and rituximab in *MYD88*<sup>WT</sup> patients (27%) after a median follow-up of 27 months.<sup>11</sup> In the current study, 50% (95% CI 30-70) of patients achieved a major response and 81% (95% CI 61-93) achieved an overall response. Taken together, these results suggest that patients with *MYD88*<sup>WT</sup> WM treated with zanubrutinib alone could achieve major or overall response rates that are at least similar to those reported for the combination of ibrutinib and rituximab (63% and 81%, respectively in the INNOVATE trial).<sup>22</sup> Longer durations of follow-up are required in order to better define the duration of response among WM *MYD88*<sup>WT</sup> patients in this substudy. With chemoimmunotherapy, WM patients who achieved VGPR had PFS outcomes indistinguishable from those with a CR.<sup>33</sup> If the same holds true for BTKi, the 27% VGPR rate in *MYD88*<sup>WT</sup> patients treated with zanubrutinib alone may translate to more favorable PFS compared with other BTKi monotherapies for which VGPR has not been demonstrated.

**Table 3. Treatment-emergent adverse events**

Event term, n (%)*	Zanubrutinib (n = 28)	
	All grades	Grade $\geq 3$
Diarrhea	8 (29)	2 (7)
Upper respiratory tract infection	6 (21)	0
Contusion	6 (21)	0
Pyrexia	6 (21)	0
Cough	5 (18)	0
Respiratory tract infection	5 (18)	2 (7)
Pruritis	4 (14)	0
Decreased appetite	4 (14)	0
Muscle spasms	4 (14)	0
Peripheral edema	4 (14)	0
Fatigue	4 (14)	0
Pneumonia	4 (14)	2 (7)
Urinary tract infection	4 (14)	0
Constipation	4 (14)	0
Back pain	4 (14)	0
Rash	3 (11)	1 (4)
Arthralgia	3 (11)	0
Headache	3 (11)	0
Basal cell carcinoma	3 (11)	0
Herpes zoster	3 (11)	0
Skin laceration	3 (11)	0
Hyponatremia	2 (7)	2 (7)
<b>Adverse events of interest, n (%)</b>		
All Infections	21 (75)	8 (29)
All hemorrhages	11 (39)	2 (7)
Major hemorrhages	2 (7)	2 (7)
Hypertension	3 (11)	3 (11)
Anemia	6 (21)	3 (11)
Neutropenia	5 (18)†	3 (11)†
Thrombocytopenia	3 (11)	2 (7)
Second primary malignancies	4 (14)	0
Skin cancers	4 (14)	0

\*Data are for all grade treatment-emergent adverse events reported in  $\geq 10\%$  of patients or  $\geq 5\%$  of patients for events grade  $\geq 3$ . Events are listed in descending order of frequency by all-grade incidence.

†Includes the MedDRA preferred term "neutrophil count decreased."

The molecular basis for the disparity in outcomes between ibrutinib and zanubrutinib in this WM patient subset is unclear since both compounds inhibit BTK via the same mechanism of action, although 100% BTK occupancy sustained over 24 hours with zanubrutinib was demonstrated in paired lymph node biopsies.<sup>15</sup> In *MYD88*<sup>MUT</sup> WM, autonomous signaling through the Toll/Interleukin-1 Receptor (TIR)/MYD88 complex (or Myddosome) and resulting activation of BTK and NF $\kappa$ B, has a clear role in propagation of the malignant clone.<sup>34,35</sup> The importance of Myddosome signaling in *MYD88*<sup>WT</sup> patients is less clear cut. Activation of BTK via signaling through the B-cell receptor or possibly other signaling axes might contribute

clinically relevant pro-survival signals in *MYD88*<sup>WT</sup> patients.<sup>3</sup> While published data for patients with *MYD88*<sup>WT</sup> WM treated with single-agent ibrutinib are limited,<sup>5</sup> it is noteworthy that in a study of acalabrutinib (a more selective BTK inhibitor than ibrutinib), comparable ORRs and MRRs to those reported herein were observed in 14 *MYD88*<sup>WT</sup> patients (79% and 64%, respectively, with 95% CI 49–95 and not reported, respectively) although no patient achieved a VGPR.<sup>9</sup> To date, the ASPEN study evaluated the largest cohort of WM patients with *MYD88*<sup>WT</sup> disease confirmed by central testing and demonstrated VGPR by zanubrutinib monotherapy.

Zanubrutinib was generally well-tolerated in this cohort. The safety profile was consistent with that reported among patients with *MYD88*<sup>MUT</sup> disease.<sup>18</sup> Infections were the most common category of AEs and were both qualitatively and quantitatively consistent with prior zanubrutinib experience as well as the natural history of WM. The incidence of cardiovascular complications (in particular, atrial fibrillation and hypertension) was comparably low. External precipitating factors contributed to occurrence of the 2 major hemorrhages (ie, head trauma and gastric ulceration/enoxaparin exposure). Peripheral blood cytopenias, while relatively common, were never serious nor did they lead to modification of the study regimen. Quantitatively, other safety metrics such as AEs leading to treatment discontinuation, dose reduction or death were similar to prior experience with zanubrutinib in patients with WM.<sup>18</sup>

Our study has several limitations, most notably the small number of patients treated and lack of a control arm, although the feasibility of conducting a controlled study given the rarity of *MYD88*<sup>WT</sup> WM is questionable. Additionally, the lack of B-cell enrichment in baseline bone marrow aspirates may have precluded the identification of other *MYD88* mutations (including non-activating mutations) with low allelic frequency. To our knowledge, the *MYD88* mutation detection assay employed in this study with a lower limit of detection of 0.2% to 0.5% had sufficient sensitivity for detection of the most common *MYD88* activating mutations.

In summary, this substudy demonstrated that zanubrutinib was, in general, a tolerable and effective treatment option for patients with *MYD88*<sup>WT</sup> WM. Further study is needed to clarify the molecular basis for the disparate clinical outcomes observed between ibrutinib-, acalabrutinib- and zanubrutinib-treated patients with *MYD88*<sup>WT</sup> WM. Longer follow-up of this cohort will better define the capability of zanubrutinib for disease control in this difficult to manage patient subset.

## Acknowledgments

The authors thank the patients who participated in the study, their supporters, and the investigators and clinical research staff from the study centers.

This study was supported by research funding from BeiGene Inc., US; and medical writing and editorial assistance were funded by BeiGene and provided by Gordon Bray and Bio Connections, LLC.

## Authorship

Contribution: All author investigators (M.D., R.G.S., H.-P.L., M.T., M.V., S.O., S.D., R.G.O., G.C., S.M., J.C., J.J.C., M.M., T.S., M.G.M., M.G.G., D.T., P.L.Z., E.A., S.G., A.O., S.R., J.K., A.T., C.B., V.L., J.T., and C.S.T.) collected data; the sponsor confirmed the accuracy of the data and compiled the data for analysis; and all authors reviewed

the manuscript and made the decision to submit it for publication and vouch for the accuracy and completeness of the data and analyses and adherence to the trial protocol.

Conflicts-of-interest disclosure: M.D. has received honoraria from and was a consultant/advisor for Amgen, Janssen, Takeda, Celgene, a Bristol-Myers Squibb Company, and Bristol-Myers Squibb. R.G.S. received honoraria from Amgen, Janssen, and Takeda; was a consultant/advisor for Janssen; received research funding from Gilead and Incyte; holds patents, royalties, or other intellectual property from BIOMED 2 Primers, and received travel and accommodations reimbursement from Janssen and Takeda. H.-P.L. owns stock and has ownership in CSL. M.T. received honoraria from Janssen, Gilead Sciences, Takeda, Bristol-Myers Squibb, Amgen, AbbVie, Roche, MorphoSys, and Incyte and was a consultant or advisor for Takeda, Bristol-Myers Squibb, Incyte, AbbVie, Amgen, Roche, Gilead Sciences, Janssen, Celgene, and MorphoSys. M.V. was a consultant or advisor for Janssen and Roche and received travel and accommodations reimbursement from AbbVie and Janssen. S.O. received honoraria from and was a consultant/advisor for AbbVie, Roche, AstraZeneca, Merck, Gilead, Janssen, and Novartis; received research funding from BeiGene, Roche, AstraZeneca, Janssen, Merck, Amgen, and Epizyme; and received travel accommodations and expenses reimbursement from Roche. S.D. participated in speakers' bureaus for Amgen; received research funding from Janssen and BeiGene; and received travel and accommodations expenses from Janssen. R.G.O. received honoraria from Janssen and Celgene, a Bristol-Myers Squibb Company; was a consultant/advisor for and received travel and accommodations reimbursement from Janssen. G.C. received research funding from BeiGene, Acerta, and Glycomimetics, and received travel and accommodations reimbursement from Glycomimetics. J.J.C. was a consultant/advisor for BeiGene, Janssen, Kymera, Pharmacyclics and Roche, and received research funding from AbbVie, BeiGene, Janssen, Pharmacyclics, and TG Therapeutics. M.M. was a consultant/advisor for Roche and Janssen. T.S. was a consultant/advisor for AstraZeneca, Kite Pharma, Juno Therapeutics, and BeiGene; participated in speakers' bureaus for Pharmacyclics, Janssen, AstraZeneca, and Seattle Genetics; and received research funding from Pharmacyclics, Juno Therapeutics, BeiGene, AstraZeneca, TG Therapeutics, and Celgene, a Bristol-Myers Squibb Company. M.G.M. participated in speakers' bureaus for Celgene, a Bristol-Myers Squibb Company, and received travel and accommodations reimbursement from Janssen, Celgene, a Bristol-Myers Squibb Company, Amgen, and Takeda. M.G.G. was a consultant/advisor for Celgene, a Bristol-Myers Squibb Company, and Janssen; and received travel and accommodations reimbursement from Janssen. D.T. received honoraria and research funding from Amgen, Janssen, Roche, and Takeda; and was a consultant/advisor for Roche, Janssen and Amgen. P.L.Z. received honoraria from and participated in speakers' bureaus for Celtrion, MSD, Gilead, and Astellas; and was a consultant/advisor for Verastem, Kyowa Kirin, and Gilead. A.O. was a consultant/advisor for Celgene, a Bristol-Myers Squibb Company, and Amgen; and participated in speakers' bureaus for Celgene, a Bristol-Myers Squibb Company, Amgen, and Janssen. S.R. was a consultant/advisor for Janssen, Kite Pharma, Sunesis, and AstraZeneca; received research funding from Janssen; and participated in speakers' bureaus for Janssen and Roche. A.T. received honoraria from and was a consultant/advisor for Janssen, AstraZeneca, and AbbVie. C.B. received honoraria from, was a consultant/advisor and



participated in speakers' bureaus for Roche, Janssen, Celltrion, and BeiGene; and received research funding from Roche, Janssen, and BeiGene. V.L. received honoraria from AstraZeneca, Roche, Gilead, Amgen, AbbVie, and Janssen; was a consultant/advisor for AstraZeneca, AbbVie, Roche, and Janssen; participated in speakers' bureaus for AbbVie and Janssen; and received travel and accommodations reimbursement from AbbVie, Roche, and Janssen. J.T. received research funding from BeiGene, Janssen, Celgene, Pharmacyclics, and Roche. W.Y.C. is employed by BeiGene and holds stock/other ownership with BeiGene and Bristol-Myers Squibb. J.M. and J.S. are employed by and hold stock/other ownership with BeiGene. Z.T. is employed by and holds stock/other ownership with BeiGene. A.C. is employed by, holds stock/other ownership with, and received travel and accommodations reimbursement from BeiGene. J.H. is employed by, has a leadership role with, and holds stock/other ownership with BeiGene. C.S.T. is a consultant/advisor for BeiGene, Janssen,

Roche, AbbVie, and LOXO; and has received research funding from Janssen, AbbVie, BeiGene, Pharmacyclics, and TG Therapeutics. The remaining authors declare no competing financial interests.

A complete list of the ASPEN investigators appears in the supplemental appendix.

ORCID profiles: R.G.S., 0000-0003-4120-2787; M.T., 0000-0002-6952-6073; J.J.C., 0000-0001-9490-7532; M.G.M., 0000-0002-8106-8909; M.G.G., 0000-0002-0366-3673; D.T., 0000-0001-6766-8345; A.O., 0000-0001-6804-2221; J.T., 0000-0001-8009-4593.

Correspondence: Meletios Dimopoulos, School of Medicine, National and Kapodistrian University of Athens, Alexandra Hospital, 80 Vasilisis Sophias, 11528 Athens, Greece; e-mail: mdimop@med.uoa.gr.

## References

1. Gertz MA. Waldenström macroglobulinemia: 2019 update on diagnosis, risk stratification, and management. *Am J Hematol*. 2019;94(2):266-276.
2. Pal Singh S, Dammeijer F, Hendriks RW. Role of Bruton's tyrosine kinase in B cells and malignancies [published correction appears in *Mol Cancer*. 2019; 18(1):79]. *Mol Cancer*. 2018;17(1):57.
3. Argyropoulos KV, Vogel R, Ziegler C, et al. Clonal B cells in Waldenström's macroglobulinemia exhibit functional features of chronic active B-cell receptor signaling. *Leukemia*. 2016;30(5):1116-1125.
4. Treon SP, Xu L, Guerrero ML, et al. Genomic landscape of Waldenström macroglobulinemia and its impact on treatment strategies. *J Clin Oncol*. 2020; 38(11):1198-1208.
5. Treon SP, Meid K, Gustine J, et al. Long-term follow-up of previously treated patients who received ibrutinib for symptomatic Waldenström's macroglobulinemia: update of pivotal clinical trial [abstract]. *Blood*. 2017;130(suppl 1). Abstract 2766.
6. Treon SP, Gustine J, Meid K, et al. Ibrutinib monotherapy in symptomatic, treatment-naïve patients with Waldenström macroglobulinemia. *J Clin Oncol*. 2018;36(27):2755-2761.
7. Treon SP, Xu L, Hunter Z. MYD88 mutations and response to ibrutinib in Waldenström's macroglobulinemia. *N Engl J Med*. 2015;373(6):584-586.
8. Dimopoulos MA, Trotman J, Tedeschi A, et al; iNNOVATE Study Group and the European Consortium for Waldenström's Macroglobulinemia. Ibrutinib for patients with rituximab-refractory Waldenström's macroglobulinemia (iNNOVATE): an open-label substudy of an international, multicentre, phase 3 trial. *Lancet Oncol*. 2017;18(2):241-250.
9. Owen RG, McCarthy H, Rule S, et al. Acalabrutinib monotherapy in patients with Waldenström macroglobulinemia: a single-arm, multicentre, phase 2 study. *Lancet Haematol*. 2020;7(2):e112-e121.
10. Hunter ZR, Xu L, Tsakmaklis N, et al. Insights into the genomic landscape of MYD88 wild-type Waldenström macroglobulinemia. *Blood Adv*. 2018;2(21): 2937-2946.
11. Dimopoulos MA, Tedeschi A, Trotman J, et al; iNNOVATE Study Group and the European Consortium for Waldenström's Macroglobulinemia. Phase 3 trial of ibrutinib plus rituximab in Waldenström's macroglobulinemia. *N Engl J Med*. 2018;378(25):2399-2410.
12. Paludo J, Abeykoon JP, Shreders A, et al. Bendamustine and rituximab (BR) versus dexamethasone, rituximab, and cyclophosphamide (DRC) in patients with Waldenström macroglobulinemia. *Ann Hematol*. 2018;97(8):1417-1425.
13. Laribi K, Poulain S, Willems L, et al. Bendamustine plus rituximab in newly-diagnosed Waldenström macroglobulinemia patients. A study on behalf of the French Innovative Leukaemia Organization (FILO). *Br J Haematol*. 2019;186(1):146-149.
14. Guo Y, Liu Y, Hu N, et al. Discovery of zanubrutinib (BGB-3111), a novel, potent, and selective covalent inhibitor of Bruton's tyrosine kinase. *J Med Chem*. 2019;62(17):7923-7940.
15. Tam CSL, Trotman J, Opat S, et al. Phase 1 study of the selective BTK inhibitor zanubrutinib in B-cell malignancies and safety and efficacy evaluation in CLL. *Blood*. 2019;134(11):851-859.
16. *Brukina: package insert*. Beijing, China: BeiGene Co. Ltd; 2019.
17. Trotman J, Opat S, Gottlieb D, et al. Zanubrutinib for the treatment of patients with Waldenström macroglobulinemia: 3 years of follow-up. *Blood*. 2020; 136(18):2027-2037.
18. Tam CS, Opat S, D'Sa S, et al. A randomized phase 3 trial of zanubrutinib versus ibrutinib in symptomatic Waldenström macroglobulinemia: the ASPEN study. *Blood*. 2020;136(18):2038-2050.
19. Dimopoulos MA, Kastritis E, Owen RG, et al. Treatment recommendations for patients with Waldenström macroglobulinemia (WM) and related disorders: IWWW-7 consensus. *Blood*. 2014;124(9):1404-1411.

20. MYD88 Mutation Analysis. Fort Myers, FL: NeoGenomics; 2020. Available at: <https://neogenomics.com/test-menu/myd88-mutation-analysis>. Accessed 24 August 2020.
21. CXCR4 Mutation Analysis. Fort Myers, FL: NeoGenomics; 2020. Available at: <https://neogenomics.com/test-menu/cxcr4-mutation-analysis>. Accessed 24 August 2020.
22. Albitar A, Ma W, DeDios I, Estella J, Agersborg S, Albitar M. Positive selection and high sensitivity test for MYD88 mutations using locked nucleic acid. *Int J Lab Hematol*. 2016;38(2):133-140.
23. Poulain S, Roumier C, Venet-Caillaud A, et al. Genomic landscape of CXCR4 mutations in Waldenström macroglobulinemia. *Clin Cancer Res*. 2016; 22(6):1480-1488.
24. Treon SP, Cao Y, Xu L, Yang G, Liu X, Hunter ZR. Somatic mutations in MYD88 and CXCR4 are determinants of clinical presentation and overall survival in Waldenstrom macroglobulinemia. *Blood*. 2014;123(18):2791-2796.
25. Owen RG, Kyle RA, Stone MJ, et al; VIth International Workshop on Waldenström macroglobulinaemia. Response assessment in Waldenström macroglobulinaemia: update from the VIth International Workshop. *Br J Haematol*. 2013;160(2):171-176.
26. Brookmeyer RCJ. A confidence interval for the median survival time. *Biometrics*. 1982;38(1):29-41.
27. Greenwood M. A report on the natural duration of cancer. In: Reports on Public Health and Medical Subjects. London, England: His Majesty's Stationery Service; 1926:26.
28. Campo E, Swerdlow SH, Harris NL, Pileri S, Stein H, Jaffe ES. The 2008 WHO classification of lymphoid neoplasms and beyond: evolving concepts and practical applications. *Blood*. 2011;117(19):5019-5032.
29. Owen RG, Treon SP, Al-Katib A, et al. Clinicopathological definition of Waldenstrom's macroglobulinemia: consensus panel recommendations from the Second International Workshop on Waldenstrom's Macroglobulinemia. *Semin Oncol*. 2003;30(2):110-115.
30. Morel P, Duhamel A, Gobbi P, et al. International prognostic scoring system for Waldenstrom macroglobulinemia. *Blood*. 2009;113(18):4163-4170.
31. Abeykoon JP, Paludo J, King RL, et al. MYD88 mutation status does not impact overall survival in Waldenström macroglobulinemia. *Am J Hematol*. 2018; 93(2):187-194.
32. Treon SP, Gustine J, Xu L, et al. MYD88 wild-type Waldenstrom Macroglobulinaemia: differential diagnosis, risk of histological transformation, and overall survival. *Br J Haematol*. 2018;180(3):374-380.
33. Treon SP, Yang G, Hanzis C, et al. Attainment of complete/very good partial response following rituximab-based therapy is an important determinant to progression-free survival, and is impacted by polymorphisms in FCGR3A in Waldenstrom macroglobulinaemia. *Br J Haematol*. 2011;154(2):223-228.
34. Treon SP, Xu L, Yang G, et al. MYD88 L265P somatic mutation in Waldenström's macroglobulinemia. *N Engl J Med*. 2012;367(9):826-833.
35. Yang G, Zhou Y, Liu X, et al. A mutation in MYD88 (L265P) supports the survival of lymphoplasmacytic cells by activation of Bruton tyrosine kinase in Waldenström macroglobulinemia. *Blood*. 2013;122(7):1222-1232.