

Engine Downsizing; Global Approach to Reduce Emissions: A World-Wide Review: A World-Wide Review

Namar, MM, Jahanian, O, Shafaghat, R & Nikzadfar, K

Published PDF deposited in Coventry University's Repository

Original citation:

'Engine Downsizing; Global Approach to Reduce Emissions: A World-Wide Review: A World-Wide Review ', HighTech and Innovation Journal, vol. 2, no. 4, pp. 384-399

<https://dx.doi.org/10.28991/HIJ-2021-02-04-010>

DOI 10.28991/HIJ-2021-02-04-010

ISSN 2723-9535

Publisher: Ital Publication

This is an Open Access article distributed under the terms of the Creative Commons Attribution License (<http://creativecommons.org/licenses/by/4.0/>), which permits unrestricted use, distribution, and reproduction in any medium, provided the original work is properly cited..



ISSN: 2723-9535

Review Article

Available online at www.HighTechJournal.org

HighTech and Innovation Journal

Vol. 2, No. 4, December, 2021



Engine Downsizing; Global Approach to Reduce Emissions: A World-Wide Review

Mohammad Mostafa Namar ^{1*}, Omid Jahanian ¹, Rouzbeh Shafaghat ¹,
Kamyar Nikzadfar ^{1, 2}

¹ Mechanical Engineering, Babol Noshirvani University of Technology, Babol, Iran.

² Assistant Professor, School of Mechanical, Aerospace and Automotive Engineering, Coventry University, Coventry, United Kingdom

Received 13 September 2021; Revised 18 November 2021; Accepted 23 November 2021; Published 01 December 2021

Abstract

Engine downsizing is a promising method to reduce emissions and fuel consumption of internal combustion engines. The main concept is reducing engine displacement volume keeping needed output characteristics unchanged. The issue became one of the most filed of interest in recent years after the International Energy Agency defined a target of 50 % reduction in global average emissions by the year 2030. In this review paper, different aspects of researchers' efforts on engine downsizing are configured and due to overlaps, categorized into five main areas. Each category is discussed thoroughly and recent works are pointed. The global attention into these categories, countries involved and the trend changed in recent four years are presented in details.

Keywords: Internal Combustion Engines; Engine Downsizing; Emissions.

1. Introduction

The long term goal of International Energy Agency (IEA) is reported as 50% reduction in global average emissions by the year 2030 [1]. To improve vehicles fuel economy and reduce pollutant emissions some aspects such as policy changes, enhanced technologies, revised fuels and reduced vehicle/engine size can be considered as effective techniques. Although extended works is being done from using alternative or additive fuels [2 and 3] to employing Low Temperature Combustion (LTC) [4 and 5] for fuel economy enhancement and emission limiting, engine downsizing is still one of the most applicable ways in the automotive industry field to achieve IEA 2030 goal.

Engine downsizing; reducing engine displacement volume providing the same operating parameters, is considered as the most effective strategy to improve the efficiency of powertrain [6] and also achieving the aim of limiting pollutants and CO_2 [7]. It reduces CO_2 and NO_x emission, engine block weight and friction loss besides enhancing fuel economy [8]. Downsized engines are able to produce the same power as right-sized ones employing supercharger, turbocharger, twin-charging, direct injection (DI), exhaust gas recirculation (EGR) or variable valve timing (VVT).

The idea of downsizing the engines which means reducing main dimensions of the engine and reducing the swept volume with mainly the same or higher torque and power of the engine, has been well known since the 1990s [9-11]. The challenges of improving the performance of downsized engines involving knock and super-knock, electrification and using electro-mechanical components were categorized in different review reports. In 2011, engine downsizing

* Corresponding author: m.namar@stu.nit.ac.ir

 <http://dx.doi.org/10.28991/HIJ-2021-02-04-010>

➤ This is an open access article under the CC-BY license (<https://creativecommons.org/licenses/by/4.0/>).

© Authors retain all copyrights.

efforts direction was reported to the spark ignition (SI) engines and also the future of brake mean effective pressure (BMEP) of compression ignition (CI) engines was estimated 30 bar until 2020 [12]. Employing variable geometry turbine in SI downsized engines was studied in 2014 and higher output torque besides less fuel consumption in part load operation and also high speed response in transient operation were reported as its advantages while cost, durability and turbine inlet temperature limitation were noted as its utilization challenges [13]. The trend of downsizing improvement focusing on industrial companies achievements were published by Pielecha et al. [14]. They reported that industrial companies keen on SI engines downsizing more than CI ones. In 2015, the winner of future engines competition, Engine of the year, was introduced as an engine with more than $68 \text{ kW}/\text{dm}^3$ specific power, more than $127 \text{ Nm}/\text{dm}^3$ specific torque factor and less than $83 \text{ (g/km)}/\text{dm}^3$ volumetric emission of CO_2 [15]. The most important reasons of employing supercharger in SI downsized engine were reported as fuel economy and better response in transient operation [16 and 17]. Engine downsizing efforts in European markets started in 2006 and it reduced fuel consumption by 32% until 2015 [18]. Wang et al. (2017) [19] reported the maximum volumetric percentage of ethanol in fuel for downsized engine by 63% after a brief review of using ethanol as an additive. Indeed, the review study on employing electric supercharger (ESC) and turbocharger (ETC) for internal combustion engines (ICE) was done by Lee et al. [20].

As published researches on engine downsizing in notably increased after IEA report, this paper has focused on recent four year studies (2014 to 2017) to find a vivid division for different aspects. These categories are introduced in next section. A global distribution of studies and the changes of work quantity in each category are also discussed.

2. Literature Review

Engine downsizing efforts are flourished since 2011 as IEA 2030 goal has been published. English-language published research on this topic from 2014 to 2017 have focused on many different subjects. It is somehow difficult to categorize these studies and recognize the overlaps but after a deep investigation on these varied area, a chart has been drawn to show different subjects and their relations as shown in Figure 1. By this determination, all subjects can be categorized five groups namely; electrical, base design, engine components, engine performance and knock & super-knock. Indeed, the overlaps of different groups in each subsection are defined linking each other. More detailed investigation is presented in Figure 1.

2.1. Electrical

Using electric instruments e.g. electric supercharger (ESC), electric turbocharger (ETC) and electrification is a promising approach in engine downsizing which is recently noticed by American, Dutch and German Institutes and more studies can be devoted to this field in future. Marinkov et al. (2016) [21] proposed a model to calculate optimal buffer size providing supercharger demanded power and noted that electrification employing buffer can remove the turbo-lag in engines equipped by turbocharger system. Furthermore, the challenges of electrification of turbocharger and supercharger systems in downsized engines and hybrid vehicles was investigated by Lee et al. [22]. In 2017, the literature of using ESC and ETC in internal combustion engines (ICE) is studied in the review study [20] and the potential of electric energy recuperation via turbocharger on a downsized direct injection (DI) spark ignition engine is evaluated by Stoffels et al. [23].

2.2. Base Design

Downsized engine base design, all or focusing on one part of an engine, was widely investigated in Europe and USA and it seems research attention is now reducing in this field since some researchers had changed their focus from geometrical downsizing to improve right-size engines performance [24]. A 50% downsized 3-cylinder engine optimal designing was reported by Hancock et al. [25] focusing on design structure and employed technologies and 30% fuel economy and also CO_2 reduction are reported as their optimal design. Concept of using pneumatic hybridization instead of electric hybridization for ultra-downsizing was reported more cost-efficient by Dönitz et al. [26]. The opportunity of a spark ignition engine 40% downsizing employing high octane bio-fuels and cooled EGR was investigated by Splitter and Szybist (2014) [27]. Indeed, the limits of CI engines downsizing were reported as space limitations for injection and combustion processes, the increase of surface-to-volume ratio which gives rise to higher heat losses and limits related to the air management by Payri et al. [28]. Charge cooling with a tracer-based two-line planar laser induced fluorescence (PLIF) technique in an optical gasoline direct injection (GDI) engine was introduced as an idea to increase volumetric efficiency and compression ratio (CR) for downsized engine by Anbari et al. [29]. In addition, Turner et al. [30] have achieved 35% CO_2 reduction designing a 60% downsized engine from a 5L, 8-cylinder V-type Jaguar Land Rover engine. More efficient turbulent flow at intake port in part load operation was achieved using a new design of intake system by Millo et al. [31] while it was not realized at full load. Cooperating of this new design via advancing of inlet valve closing (IVC) and employing turbocharger was introduced as an effective way to improve SI engines performance. Severi et al. (2015) [32] asserted that 20% displacement volume reduction besides providing right-size engine maximum power of studied GDI engine is achievable via 11% piston bore reduction and using both engine boosting and spark advancing, in a numerical investigation. A light duty downsized diesel engine, called z-engine, was developed utilizing

homogenous charge compression ignition (HCCI) mode in high load operation by Kuleshov et al. [33] and it is asserted that less NOx emission was produced in this way. The concept of designing a boosted uni-flow scavenged direct injection gasoline engine to achieve more than 50% downsizing is presented by Ma and Zhao [34] for a two stroke engine. Furthermore, friction loss investigation due to employing microgeometry piston bearing [35] and oil pan design for modern downsized engine [36] were studied in 2017.

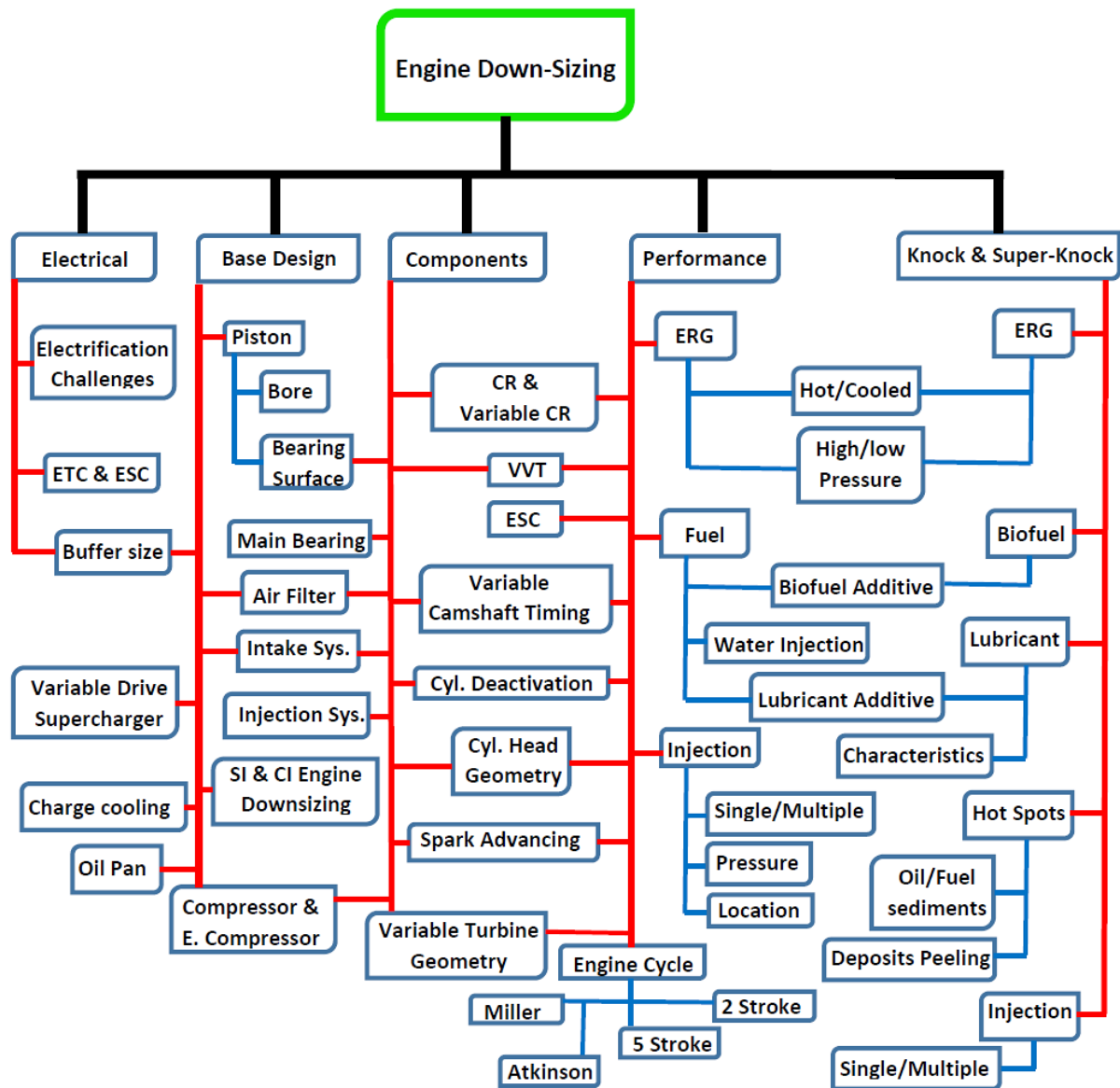


Figure 1. Strategies for downsized engines investigation/improvement

2.3. Engine Components

Downsized engine components, their behavior and also their effects on engine performance is a popular issue which is widely investigated in UK, China and USA. Marelli et al. (2014) [37] investigated pulsating flow performance of a turbocharger compressor generated by the extremely downsized engine intake valves. Piston reinforcement employing titanium or metal-ceramic composites and pressure casting or forging was proposed for heavy downsizing, more than 30%, by Sroka and Dzedzioch [38]. Using turbocharger-supercharger configuration as boosting system was reported more suitable in both fuel economy and performance of the 1.5L diesel engine powered passenger car at all studied operating conditions by Biller et al. (2015) [39]. In addition, different strategies of utilizing boosting device were investigated by Rastelli et al. [40] and the main cause of downsized engine pistons deformation is introduced pressure waves due to the knock by Yao et al. [41]. Employing ESC was proposed for heavy downsizing and achieving excellent fuel economy besides high speed response in transient operating by Bassett et al. (2016) [42 and 43]. It has also easier maintenance and higher cost than using low and high pressure turbine as a boosting configuration called TRITURBO [44]. Fuel injection systems of previous developed engines were compared by a downsized compressed natural gas (CNG) fueled SI engine ones provided by Mahle [45] and 31% CO₂ reduction was achieved using variable geometry

turbine in the studied engine. Furthermore, the sufficient way of air filter manufacturing based on the minimum pressure drop for downsized engines was presented by Wu et al. [46]. Real load applied to main bearing of downsized engine was studied by Matsumoto et al. [47] and it was noted that it is far from the load calculated by simple known correlation between in-cylinder pressure and main bearing load. Bassett et al. (2017) [48 and 49] studied the performance and fuel consumption of a 1.2L 3-cylinder engine equipped by ESC and 48V lead-carbon battery in different driving cycles. Using battery was also proposed to troubleshoot of engine speed reduction caused employing ETC and variable geometry turbine in heavy duty diesel engine downsizing [50]. A high efficiency electric compressor which operates sufficiently in low speed was designed by Wang et al. [51] and a novel boosting system consist of a turbocharger cooperating via an independent compressor which is manageable by clutch was proposed achieving better performance in transient operation by Hu et al. [52].

2.4. Knock and Super-knock

Another interested issue on engine downsizing field is knock investigation. Along with all the known reasons for engine knock such as hot spots and oil droplet formation/deposits, operating near the knock condition due to high compression ratio and/or charge boosted pressure brings intense knock [53], called super-knock, especially in low speed operating condition for downsized engines. Charge ignition before the spark time in low speed operation is also called low speed pre-ignition (LSPI) which may cause serious damages to engine. Researchers' efforts to investigate and reduce downsized engines knock and super-knock can be categorized in five groups namely; studying EGR, bio-fuel, lubricant, hot spot and injection.

Fontanesi et al. [54] studied knock using auto-regressive of experimental in-cylinder pressure data and also 1D/3D simulation of a downsized engine combustion in 2014. The main source of LSPI was introduced the auto-ignition of in-cylinder separated gas phases in a comparative study of a downsized SI and two downsized CI engines [55] and deposits peeling from combustion chamber walls were identified as a new mechanism causing LSPI by Okada et al. [56]. In addition, using lubricant oil as a fuel additive to charge ignition tendency and super-knock impact reduction was proposed by Welling et al. [57] and also LSPI caused by engine oil and/or heavy ends of gasoline local igniting was investigated in a separated study [58]. The effects of pressure wave caused by charge auto-ignition on ignition delay and pressure fluctuations in a hydrogen fueled downsized engine were evaluated numerically by Wei et al. [59]. Advancing ignition timing [60] and large size solid carbon particle [61] were reported as other reasons of super-knock and excess air coefficient, engine coolant temperature and valve timing were introduced as important parameters on LSPI [62] in 2015. Lubricant oil formulation is another effective parameter on LSPI and using calcium [63], magnesium [64] and aromatic species [65] as additives of lubricant have strong effect on the frequency of LSPI in which knock can be prevented using these species. Furthermore, using lubricant oils with calcium compounds as fuel additives [66] or injection them in warm inlet air [67] can increase ignition delay and decrease LSPI while lubricant with magnesium has no effects on ignition delay. The effects of early and late intake valve closures on knock were also investigated by Luisi et al. [68] and it was reported that late IVC has positive effects in full load and high speed operation while there is no effect for early IVC.

In 2017, knock and super-knock was considered in other views; Pan et al. [69] investigated it via 3D large eddy simulation (LES) coupling detailed chemistry solver and asserted that single hot spot makes stronger pressure wave than multi-points auto-ignition. Khosravi et al. [70] investigated knock due to hot spots via multi-zone thermodynamic model and computational knock index was introduced in a 3D RANS simulation to define knock limits by Chevillard et al. [71]. Linear trend between cycle to cycle variation and burn rate was reported by Chen et al. [72] while no significant change in knock limit due to coolant flow rate and temperature was achieved by Asif et al. [73]. Szybist et al. [74] also studied the effect of employing cooled EGR at high load operation and reported that it is less effective than low load operation due to polytrophic coefficient enhancement by adding EGR. Knock impact reduction is reported increasing ethanol percentage as an additive due to its sufficient latent heat of vaporization [75] while more knock is occurred due to vaporization rate reduction [76]. In addition, split injection cooperating Miller cycle was employed to knock resistant enhancement in a downsized engine in 2018 [77]. Pressure wave caused by two hot spots was also evaluated by Wei et al. [78] for primary reference fuel (PRF) and it was noted that in the same initial condition, the distance for detonation formation within PRF0 air mixture is shorter than PRF40.

2.5. Engine Performance

The most interested field of research on engine downsizing is engine performance analysis due to the change on engine different parameters. More than half of studied works are devoted to this category and they are divided into four main sections namely; performance analysis due to EGR, fuels, injection strategy and engine base cycle.

EGR

Different strategies of employing EGR are studied in literature to achieve less emission besides increasing downsized engine operating limit. These strategies are namely using cooled or hot and high or low pressure EGR.

Cairns et al. [79] using cooled EGR achieved 3% fuel saving besides 10% CO_2 emission reduction at part load condition of a turbocharged SI engine. They also noted that external cooled EGR is more sufficient than internal one and reported that CO_2 , CO and HC emissions are reduced by 17%, 70% and 80% respectively, using this strategy. Also, 6% to 11% specific fuel consumption (SFC) reduction using EGR and controlling boost pressure and spark timing was reported by Galloni et al. [80] in a downsized gasoline fueled engine investigation. In addition, 3.5% enhancement on thermal efficiency and 9% less fuel consumption was achieved using 25% cooled EGR besides increasing CR from 9.3 to 10.9 in a downsized GDI engine studied by Su et al. [81]. Using low pressure cooled EGR at turbocharge condition, 5% fuel economy improvement was reported by Takaki et al. [82] and less knock tendency at full load operation was reported by Teodosio et al. [83]. Less particular matter (PM) and soot as advantages and liquid water forming at intercooler as disadvantage of employing low pressure EGR were expressed by Luján et al. [84] and 48% soot emission reduction using cooled EGR was reported by Li et al. [85]. Bozza et al. [86] achieved 25% to 30% SFC reduction employing cooled low pressure EGR and port water injection and both low and high pressure cooled EGR effects on engine performance and emission are studied by Shen et al. [87]. They asserted that there is no difference between high and low pressure EGR for combustion process but turbine and compressor performance are affected. Furthermore, high pressure cooled EGR was reported more effective on fuel economy at high load operation while low pressure one was expressed more sufficient at low load operation [88]. Cooled EGR effects on the performance of a downsized GDI engine were studied by Jadhav and Mallikarjuna [89] and 2% and 2.3% enhancement on indicated mean effective pressure (IMEP) and thermal efficiency besides less in-cylinder temperature and NO_x emission were reported.

Fuels

Using different fuels to achieve better performance is always an interested field of study for engine researchers. In downsized engine, employing additives to increase knock resistant is always popular.

Remmert et al. (2014) [90] studied the effect of research octane number (RON) between 95 and 112 on a downsized SI engine and reported that RON increasing on 2000 to 3000 rpm can improve 5 to 10 CAD spark timing limitation due to the knock. Jo et al. [91] reported fuels with higher octane number are needed via engine downsizing. In addition, 0.3% reduction in engine efficiency via decreasing methane number from 69 to 64 is reported by Kramer et al. [92] and using fuels with methane index over 60% were reported as suitable alternatives for gasoline in downsized engines [93].

The effect of using lubricant oil as an additive to iso-octane on combustion quality was investigated by Kuti et al. [94] and 54% reduction on ignition delay was reported due to 10% lubricant oil addition. In addition, water injection into the charge is another way of engine efficiency enhancement [95 and 96] and it was expressed effective strategy on fuel economy and knock impact [97]. It also improved more than 5% mean effective pressure and 34% thermal efficiency at full load [98]. HC emission and noise reduction due to water direct injection into the combustion chamber was reported by Tornatore et al. [99] and it is expressed that spark time advancing and near the stoichiometry condition operating is possible employing this technology. It is also asserted that NO emission can be increased if spark time is advanced due to higher in-cylinder pressure and temperature.

Alcohols are the most attractive additives employed on engine downsizing which increase fuel knock resistant. Baêta et al. [100] using Brazilian hydrated ethanol achieved 44% efficiency from a 1.4L downsized DI engine. Cho et al. [101] reported 96% PM reduction in part load and cold start operation employing 20% volumetric ethanol in gasoline blend. Optimal fraction of ethanol in dual fuel applications was investigated by Jo et al. [102] and using high octane fuel like E85 was proposed for CR enhancement more than 11.5. In-cylinder flow field and flame development in an ethanol fueled DI engine were studied by Koupaie et al. [103] and the idea of employing anhydrous ethanol was expressed by Martins et al. [104]. In addition, using pure butanol in comparison by gasoline, produced 2% more output torque and power [105] and by employing butanol-gasoline blend, output torque and efficiency in part load operation were increased by 4% [106]. The main achievements of adding ethanol to the gasoline were reported HC and NO_x reduction and noticeable PM reduction was obtained using butanol as an additive [107]. The optimum spark times advancing for ethanol-gasoline and butanol-gasoline blends in a downsized SI engine were defined by Scala et al. (2017) [108]. Furthermore, fuel consumption and CO_2 4% to 11% reduction, PM 86% to 99% decrease and noticeable NO_x increase were reported using bio-fuels such as soybean methyl ester (SME) and rapeseed methyl ester (RME) in a downsized diesel engine [109].

Injection Strategy

Engine performance, especially emissions, will be affected by the type of fuel injection and charge preparation. PM production due to the port fuel injection (PFI) and DI strategies were studied by Su et al. [110] and more PM in DI mode

was observed. Indeed, less fuel consumption and emission reduction via injection pressure enhancement were reported by Hoffmann et al. [111] and 60% and 80% decrease on PM were achieved using dual and triple injection strategies respectively, by Su et al. [112]. Piston wall wetting prevention and less PM were also reported as advantages of early fuel injection by Xu et al. [113].

Engine Base Cycle

In addition to the most of investigated research which focused on 4-stroke Otto and Diesel engines, other engine base cycles were studied in downsized approach. The performance of 2-stroke downsized SI engine was studied by Dalla Nora et al. [114] and less fuel consumption in middle loads and less residual gasses and NO_x emission besides higher CO and HC in low intake pressure were achieved. Li et al. [115] changing a 4 cylinder SI engine to the 5-stroke 3 cylinder engine obtained 4% more thermal efficiency and 9% to 26% less fuel consumption. Furthermore, in comparison with Miller cycle, the performance of 5-stroke cycle in high load condition was reported more sufficient and vice versa [116]. Employing Miller cycle 4.7% and 7.4% BSFC reduction at full and low load conditions were obtained by Li et al. [117] and Atkinson cycle effects on ultra-downsized engine performance were also studied by Gheorghiu [118].

Other Studies

The performance of downsized engine is also investigated in other aspects which were illustrated in this section. The effects of engine downsizing on thermal characteristics and performance were studied by Sroka [119] and a numerical tool for fuel consumption map generation was presented to evaluate downsized engine SFC by Alix et al. [120]. In addition, exhaust back pressure was introduced as an effective parameter on PM emission of downsized DI engine and asserted that PM decreases via exhaust back pressure enhancement [121]. The correlation of heat flux due to pressure increase caused by knock in cycle-by-cycle variation was introduced by Mutzke et al. [122] and conjugate heat transfer in cylinder wall of a downsized SI engine was studied by Leguille et al. [123]. Jatana et al. [124] studied the sensitivity of SI combustion on fuel perturbations to obtain a control strategy for operating instability and Tong et al. [125] used an ion current sensor for combustion diagnosis, knock and LSPI detection. The effects of employing variable compression ratio [126], ESC [127], variable crank shaft timing [128] and VVT [129] on performance and emission of downsized engines were evaluated in different research and CI combustion influence from cylinder head geometry was investigated by Li et al. [130]. Using cylinder deactivation technology Millo et al. [131] obtained 30% reduction on pumping losses and cycle-by-cycle combustion variation simulator was presented and its response time for control approaches evaluated by Dulbecco et al. [132].

3. General Review

Extended efforts on engine downsizing field between 2014 and 2017 were done all over the world, but they concentrated in Europe by 62.5% according to English-language publications. In Table 1 the Contribution proportion of each mainland is reported and the number of published works from each country is shown in Figure 2. As it shown in Figure 2, England had the most amount of published works and China, Italy and USA are seriously focusing on engine downsizing after England. As discussed in previous sections, these efforts can be categorized in five general groups; namely electrical, base design, engine components, engine performance and knock & super-knock investigation. The trend of focusing on each group by researchers during studied time is shown in Figure 3. Studying on downsized engine performance is the most popular group and it also increases during the time. Knock & super-knock investigation is another popular group as well as engine components utilizing studies. It seems that base design studies are falling while electrical investigations, electrification and electric components utilizing, are a new approaches which is able to absorb much research itself in the future. As it is impossible dividing some research into the separate group, there are overlaps between almost all groups which are shown besides the proportion of each group in studied works in Figure 4.

Table 1. Contribution proportion of world universities/institutes among studied works between 2014 and 2017

Continent	Contribution proportion
Europe	62.5%
Asia	23%
America	14%
Oceania	0.5%

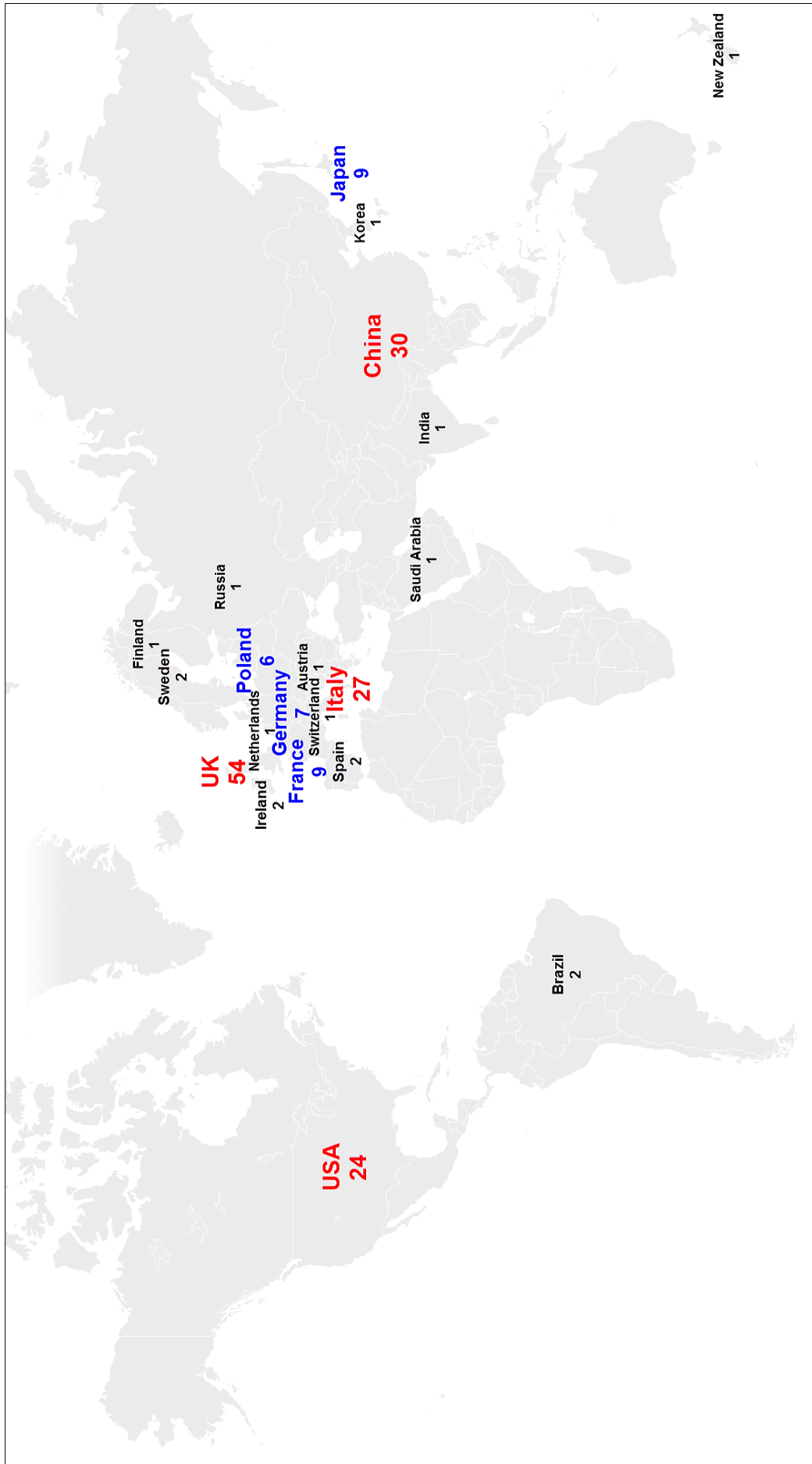


Figure 2. English language published works from each country between 2014 and 2017

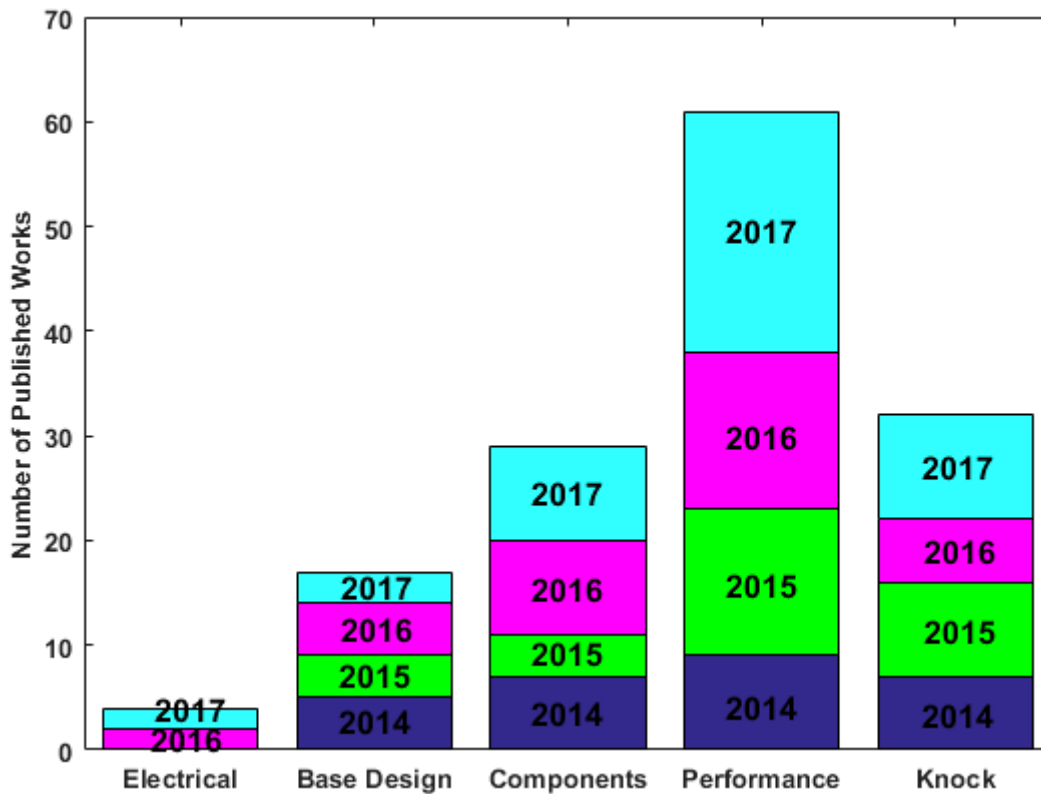


Figure 3. Trend of focusing on different fields of engine downsizing

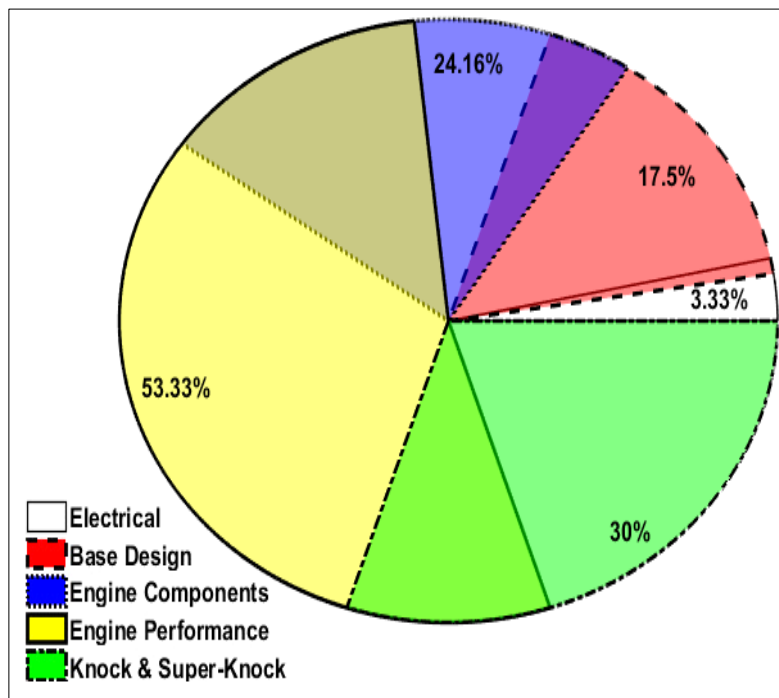


Figure 4. The overlaps and proportion of each field in engine downsizing published studies

4. Research Direction of Top Countries on Engine Downsizing

As it is obvious in Figure 2, four top countries on engine downsizing are namely; UK, China, Italy and USA. Almost the most focus of all four countries was on engine performance by 38.3%, 47.5%, 52% and 28.1% of their published works, respectively. UK focused on engine components and base design after engine performance investigating by 25% and 21.9% while China and Italy tried to study knock & super-knock more than other fields. USA is the only country which starts studying on electrification and has more uniform distribution in different groups of engine downsizing as it is seen in Figure 5.

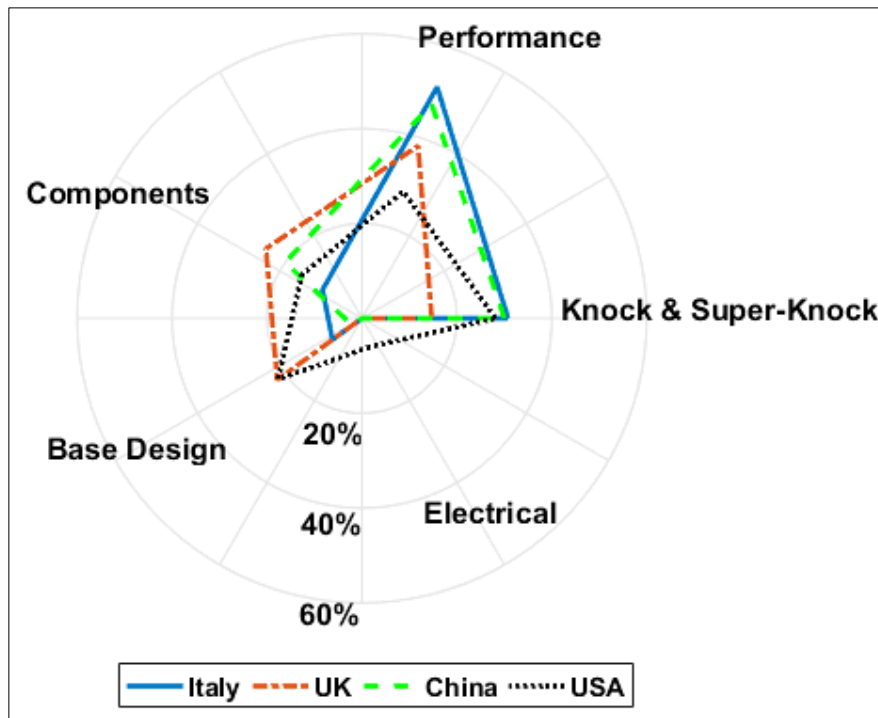


Figure 5. Research distributions of top countries on engine downsizing

5. Conclusions

In this paper recent efforts on internal combustion engine downsizing are reviewed. Different field of interest are mapped and their connection and overlaps are illustrated. Total results of this investigation can be mentioned as:

- Different subjects of researches on engine downsizing can be categorized into five distinct groups: electrical, base design, engine components, engine performance and knock & super-knock.
- Electrical: Using electric instruments e.g. electric supercharger (ESC), electric turbocharger (ETC) and electrification is an accepted field to enhance engine output power/torque while displacement volume is decreased.
- Base Design: Geometrical change in engine configuration was the first steps in engine downsizing path. However; this aspect is somehow losing its attractiveness.
- Engine Components: Downsized engine components, their behavior and also their effects on engine performance are popular issues.
- Knock & Super-knock: Almost all suggested methods for keeping engine output power/torque constant while engine downsizing would increase the probability of knock occurrence so dealing with this phenomenon is an important field of interest.
- Engine Performance: The most interested field of research on engine downsizing is engine performance analysis due to the change on engine different parameters. More than half of studied works are devoted to this category and they are divided into four main sections namely; performance analysis due to EGR, fuels, injection strategy and engine base cycle.
- Europa has the most interest in engine downsizing field. UK and Italy are actually the leaders. This review shows they have almost a uniform distribution of works on introduced categories except Electrical field.
- Main efforts in Asia are focused in China and Japan.
- USA has the most interest in Electrical fields.
- As attentions in Base Design are decreased in recent years, Engine Components and Performance studies are growing notably.
- Pretending Knock & Super-knock are always a discussing field.

6. Declarations

6.1. Author Contributions

Conceptualization, M.M.N. and O.J.; methodology, M.M.N. and O.J.; software, M.M.N.; validation, O.J.; formal analysis, M.M.N.; investigation, O.J.; resources, M.M.N.; data curation, M.M.N.; writing—original draft preparation, M.M.N.; writing—review and editing, O.J.; visualization, M.M.N.; supervision, O.J., R.S. and K.N.; project administration, O.J. All authors have read and agreed to the published version of the manuscript.

6.2. Data Availability Statement

Data sharing is not applicable to this article.

6.3. Funding

The authors received no financial support for the research, authorship, and/or publication of this article.

6.4. Declaration of Competing Interest

The authors declare that they have no known competing financial interests or personal relationships that could have appeared to influence the work reported in this paper.

7. References

- [1] Scott, D., & Gössling, S. (2021). Destination net-zero: what does the international energy agency roadmap mean for tourism? *Journal of Sustainable Tourism*, 1–18. doi:10.1080/09669582.2021.1962890.
- [2] Jahanian, O., & Jazayeri, S. A. (2010). The effects of using formaldehyde as an additive on the performance of an hcci engine fueled with natural gas. In *ASME International Mechanical Engineering Congress and Exposition, Proceedings (IMECE)* (Vol. 5, Issue PARTS A AND B, pp. 601–609). American Society of Mechanical Engineers. doi:10.1115/IMECE2010-38074.
- [3] Ezoji, H., Shafaghat, R., & Jahanian, O. (2019). Numerical simulation of dimethyl ether/natural gas blend fuel HCCI combustion to investigate the effects of operational parameters on combustion and emissions. *Journal of Thermal Analysis and Calorimetry*, 135(3), 1775–1785. doi:10.1007/s10973-018-7271-2.
- [4] Namar, M. M., & Jahanian, O. (2017). A simple algebraic model for predicting HCCI auto-ignition timing according to control oriented models requirements. *Energy Conversion and Management*, 154, 38–45. doi:10.1016/j.enconman.2017.10.056.
- [5] Li, J., Ling, X., Liu, D., Yang, W., & Zhou, D. (2018). Numerical study on double injection techniques in a gasoline and biodiesel fueled RCCI (reactivity controlled compression ignition) engine. *Applied Energy*, 211, 382–392. doi:10.1016/j.apenergy.2017.11.062.
- [6] Lang, O. (2004). Turbocharged engine with gasoline direct injection. *AutoTechnology*, 4(6), 56–59. doi:10.1007/BF03246862.
- [7] Silva, C., Ross, M., & Farias, T. (2009). Analysis and simulation of “low-cost” strategies to reduce fuel consumption and emissions in conventional gasoline light-duty vehicles. *Energy Conversion and Management*, 50(2), 215–222. doi:10.1016/j.enconman.2008.09.046.
- [8] Patil, C., Varade, S., & Wadkar, S. (2017). A review of engine downsizing and its effects. *International Journal of Current Engineering and Technology*, 7(7), 319–324.
- [9] Merker, G. P., Schwarz, C., & Teichmann, R. (2012). Combustion engines development: Mixture formation, combustion, emissions and simulation. In G P Merker, C. Schwarz, & R. Teichmann (Eds.), *Combustion Engines Development: Mixture Formation, Combustion, Emissions and Simulation* (Vol. 9783642140945). Springer Science & Business Media. doi:10.1007/978-3-642-14094.
- [10] Kuhlbach, K., Mehring, J., Borrmann, D., & Friedfeld, R. (2009). Zylinderkopf mit integriertem Abgaskrümmmer für Downsizing-Konzepte. *MTZ - Motortechnische Zeitschrift*, 70(4), 286–293. doi:10.1007/bf03225480.
- [11] Smith, A. (2008). Stroke of genius for gasoline downsizing. *Ricardo Q Rev*, Q3.
- [12] Ricardo, M. B., Apostolos, P., & Yang, M. Y. (2011). Overview of boosting options for future downsized engines. *Science China Technological Sciences*, 54(2), 318–331. doi:10.1007/s11431-010-4272-1.
- [13] Tang, H., Pennycott, A., Akehurst, S., & Brace, C. J. (2015). A review of the application of variable geometry turbines to the downsized gasoline engine. *International Journal of Engine Research*, 16(6), 810–825. doi:10.1177/1468087414552289.
- [14] Pielecha, I., Cieřlik, W., Borowski, P., Czajka, J., & Bueschke, W. (2014). Reduction of the number of cylinders in internal combustion engines—contemporary trends in downsizing. *Combustion Engines*, 53.

- [15] Sroka, Z. (2015). The impact assessment of downsizing on the development of internal combustion engines referring to the competition “engine of the year.” *Journal of KONES*, 22(3), 229–234. doi:10.5604/12314005.1166031.
- [16] Hu, B., Akehurst, S., & Brace, C. (2016). Novel approaches to improve the gas exchange process of downsized turbocharged spark-ignition engines: A review. *International Journal of Engine Research*, 17(6), 595–618. doi:10.1177/1468087415599866.
- [17] Hu, B., Turner, J. W. G., Akehurst, S., Brace, C., & Copeland, C. (2017). Observations on and potential trends for mechanically supercharging a downsized passenger car engine: a review. *Proceedings of the Institution of Mechanical Engineers, Part D: Journal of Automobile Engineering*, 231(4), 435–456. doi:10.1177/0954407016636971.
- [18] Hu, K., & Chen, Y. (2016). Technological growth of fuel efficiency in European automobile market 1975–2015. *Energy Policy*, 98, 142–148. doi:10.1016/j.enpol.2016.08.024.
- [19] Wang, C., Zeraati-Rezaei, S., Xiang, L., & Xu, H. (2017). Ethanol blends in spark ignition engines: RON, octane-added value, cooling effect, compression ratio, and potential engine efficiency gain. *Applied Energy*, 191, 603–619. doi:10.1016/j.apenergy.2017.01.081.
- [20] Lee, W., Schubert, E., Li, Y., Li, S., Bobba, D., & Sarlioglu, B. (2017). Overview of Electric Turbocharger and Supercharger for Downsized Internal Combustion Engines. *IEEE Transactions on Transportation Electrification*, 3(1), 36–47. doi:10.1109/TTE.2016.2620172.
- [21] Marinkov, S., Murgovski, N., & De Jager, B. (2016). Convex Modeling and Sizing of Electrically Supercharged Internal Combustion Engine Powertrain. *IEEE Transactions on Vehicular Technology*, 65(6), 4523–4534. doi:10.1109/TVT.2015.2510510.
- [22] Lee, W., Schubert, E., Li, Y., Silong Li, Bobba, D., & Sarlioglu, B. (2016). Electrification of turbocharger and supercharger for downsized internal combustion engines and hybrid electric vehicles-benefits and challenges. 2016 IEEE Transportation Electrification Conference and Expo (ITEC). doi:10.1109/itec.2016.7520254.
- [23] Stoffels, H., Dunstheimer, J., & Hofmann, C. (2017). Potential of Electric Energy Recuperation by Means of the Turbocharger on a Downsized Gasoline Engine. *SAE Technical Paper Series*. doi:10.4271/2017-24-0162.
- [24] Budack, R., Wurms, R., Mendl, G., & Heiduk, T. (2016). The New Audi 2.0-l I4 TFSI Engine. *MTZ Worldwide*, 77(5), 16–23. doi:10.1007/s38313-016-0035-0.
- [25] Hancock, D., Fraser, N., Jeremy, M., Sykes, R., & Blaxill, H. (2008). A New 3 Cylinder 1.2l Advanced Downsizing Technology Demonstrator Engine. *SAE Technical Paper Series*. doi:10.4271/2008-01-0611.
- [26] Dönitz, C., Vasile, I., Onder, C., & Guzzella, L. (2009). Realizing a concept for high efficiency and excellent driveability: The downsized and supercharged hybrid pneumatic engine. *SAE Technical Papers*. doi:10.4271/2009-01-1326.
- [27] Splitter, D. A., & Szybist, J. P. (2014). Experimental investigation of spark-ignited combustion with high-octane biofuels and EGR. 1. Engine load range and downsize downspeed opportunity. *Energy and Fuels*, 28(2), 1418–1431. doi:10.1021/ef401574p
- [28] Payri, F., Lopez, J. J., Pla, B., & Graciano Bustamante, D. (2014). Assessing the Limits of Downsizing in Diesel Engines. *SAE Technical Paper Series*. doi:10.4271/2014-32-0128.
- [29] Anbari Attar, M., Herfatmanesh, M. R., Zhao, H., & Cairns, A. (2014). Experimental investigation of direct injection charge cooling in optical GDI engine using tracer-based PLIF technique. *Experimental Thermal and Fluid Science*, 59, 96–108. doi:10.1016/j.expthermflusci.2014.07.020.
- [30] Turner, J. W. G., Popplewell, A., Patel, R., Johnson, T. R., Darnton, N. J., Richardson, S., Bredda, S. W., Tudor, R. J., Bithell, C. I., Jackson, R., Remmert, S. M., Cracknell, R. F., Fernandes, J. X., Lewis, A. G. J., Akehurst, S., Brace, C. J., Copeland, C., Martinez-Botas, R., Romagnoli, A., & Burluka, A. A. (2014). Ultra Boost for Economy: Extending the Limits of Extreme Engine Downsizing. *SAE International Journal of Engines*, 7(1), 387–417. doi:10.4271/2014-01-1185.
- [31] Millo, F., Luisi, S., Borean, F., & Stroppiana, A. (2014). Numerical and experimental investigation on combustion characteristics of a spark ignition engine with an early intake valve closing load control. *Fuel*, 121, 298–310. doi:10.1016/j.fuel.2013.12.047.
- [32] Severi, E., D’Adamo, A., Berni, F., Breda, S., Lugli, M., & Mattarelli, E. (2015). Numerical investigation on the effects of bore reduction in a high performance turbocharged GDI engine. 3D investigation of knock tendency. *Energy Procedia*, 81, 846–855. doi:10.1016/j.egypro.2015.12.094.
- [33] Kuleshov, A., Kuleshov, A., Mahkamov, K., Janhunen, T., & Akimov, V. (2015). New Downsized Diesel Engine Concept with HCCI Combustion at High Load Conditions. *SAE Technical Paper Series*. doi:10.4271/2015-01-1791.
- [34] Ma, J., & Zhao, H. (2015). The Modeling and Design of a Boosted Uniflow Scavenged Direct Injection Gasoline (BUSDIG) Engine. *SAE Technical Paper Series*. doi:10.4271/2015-01-1970.
- [35] Wróblewski, E., Finke, S., & Babiak, M. (2017). Investigation of friction loss in internal combustion engine of experimental microgeometry piston bearing surface. *Journal of KONES*, 24(2), 307–313. doi:10.5604/01.3001.0010.2951.

- [36] Liu, J., Liu, Y., & Bolton, J. S. (2017). The Application of Acoustic Radiation Modes to Engine Oil Pan Design. SAE Technical Paper Series. doi:10.4271/2017-01-1844.
- [37] Marelli, S., Capobianco, M., & Zamboni, G. (2014). Pulsating flow performance of a turbocharger compressor for automotive application. *International Journal of Heat and Fluid Flow*, 45(1), 158–165. doi:10.1016/j.ijheatfluidflow.2013.11.001.
- [38] Sroka, Z. J., & Dziejoch, D. (2015). Mechanical load of piston applied in downsized engine. *Archives of Civil and Mechanical Engineering*, 15(3), 663–667. doi:10.1016/j.acme.2014.12.004.
- [39] Biller, B. D., Wetzel, P., Chandras, P., & Keidel, S. (2015). Vehicle Level Parameter Sensitivity Studies for a 1.5L Diesel Engine Powered Passenger Car with Various Boosting Systems. *SAE International Journal of Fuels and Lubricants*, 8(2), 441–453. doi:10.4271/2015-01-0982.
- [40] Rastelli, R., Shutty, J., & Biller, B. (2015). A design methodology for combined turbo and supercharger applications. 15. *Internationales Stuttgarter Symposium*, 697–716. doi:10.1007/978-3-658-08844-6_47.
- [41] Yao, A., Xu, H., & Yao, C. (2015). Analysis of pressure waves in the cone-type combustion chamber under SI engine knock. *Energy Conversion and Management*, 96, 146–158. doi:10.1016/j.enconman.2015.02.057.
- [42] Bassett, M., Hall, J., Hibberd, B., Borman, S., Reader, S., Gray, K., & Richards, B. (2016). Heavily Downsized Gasoline Demonstrator. *SAE International Journal of Engines*, 9(2), 729–738. doi:10.4271/2016-01-0663.
- [43] Hibberd, B., Bassett, M., Hall, J., & Borman, S. (2016). Heavily downsized gasoline demonstrator. In *Internationaler Motorenkongress 2016* (pp. 73–89). Springer Vieweg. doi:10.1007/978-3-658-12918-7_7.
- [44] Mattarelli, E., Rinaldini, C. A., & Agostinelli, E. (2016). Comparison of Supercharging Concepts for SI Engine Downsizing. SAE Technical Papers. doi:10.4271/2016-01-1032.
- [45] Streng, S., Wieske, P., Warth, M., & Hall, J. (2016). Monovalent Natural Gas Combustion and Downsizing for Lowest CO₂ Emissions. *MTZ Worldwide*, 77(7–8), 16–23. doi:10.1007/s38313-016-0073-7.
- [46] Wu, H., Brunberg, J., Altimira, M., Bratt, N., Nyberg, H., Cronhjort, A., & Peciura, J. (2016). Semi-Empirical CFD Transient Simulation of Engine Air Filtration Systems. *SAE International Journal of Passenger Cars - Mechanical Systems*, 9(1), 310–320. doi:10.4271/2016-01-1368.
- [47] Matsumoto, K., Harada, H., Ono, Y., & Mihara, Y. (2016). In-Situ Measurement and Numerical Solution of Main Journal Bearing Lubrication in Actual Engine Environment. *SAE International Journal of Fuels and Lubricants*, 9(2), 370–373. doi:10.4271/2016-01-0894.
- [48] Bassett, M., Hall, J., Cains, T., Underwood, M., & Wall, R. (2017). Dynamic Downsizing Gasoline Demonstrator. *SAE International Journal of Engines*, 10(3), 884–891. doi:10.4271/2017-01-0646.
- [49] Bassett, M., Hall, J., Cains, T., Borman, S., & Reader, S. (2017). Dynamic downsizing gasoline demonstrator. In *Der Antrieb von morgen 2017* (pp. 247–262). Springer Vieweg. doi:10.1007/978-3-658-19224-2_15.
- [50] Xue, X., & Rutledge, J. (2017). Potentials of Electrical Assist and Variable Geometry Turbocharging System for Heavy-Duty Diesel Engine Downsizing. SAE Technical Paper Series. doi:10.4271/2017-01-1035.
- [51] Wang, P., Zangeneh, M., Richards, B., Gray, K., Tran, J., & Andah, A. (2018). Redesign of a Compressor Stage for a High-Performance Electric Supercharger in a Heavily Downsized Engine. *Journal of Engineering for Gas Turbines and Power*, 140(4), 42602. doi:10.1115/1.4038021.
- [52] Hu, B., Akehurst, S., Lewis, A. G. J., Lu, P., Millwood, D., Copeland, C., Chappell, E., De Freitas, A., Shawe, J., & Burt, D. (2018). Experimental analysis of the V-Charge variable drive supercharger system on a 1.0 L GTDI engine. *Proceedings of the Institution of Mechanical Engineers, Part D: Journal of Automobile Engineering*, 232(4), 449–465. doi:10.1177/0954407017730464.
- [53] Willand, J., Daniel, M., Montefrancesco, E., Geringer, B., Hofmann, P., & Kieberger, M. (2009). Limits on downsizing in spark ignition engines due to pre-ignition. *MTZ Worldwide*, 70(5), 56–61. doi:10.1007/bf03226955.
- [54] Fontanesi, S., Severi, E., Siano, D., Bozza, F., & De Bellis, V. (2014). Analysis of Knock Tendency in a Small VVA Turbocharged Engine Based on Integrated 1D-3D Simulations and Auto-Regressive Technique. *SAE International Journal of Engines*, 7(1), 72–86. doi:10.4271/2014-01-1065.
- [55] Zaccardi, J. M., & Serrano, D. (2014). A Comparative Low Speed Pre-Ignition (LSPI) Study in Downsized SI Gasoline and CI Diesel-Methane Dual Fuel Engines. *SAE International Journal of Engines*, 7(4), 1931–1944. doi:10.4271/2014-01-2688.
- [56] Okada, Y., Miyashita, S., Izumi, Y., & Hayakawa, Y. (2014). Study of Low-Speed Pre-Ignition in Boosted Spark Ignition Engine. *SAE International Journal of Engines*, 7(2), 584–594. doi:10.4271/2014-01-1218.

- [57] Welling, O., Collings, N., Williams, J., & Moss, J. (2014). Impact of Lubricant Composition on Low-speed Pre-Ignition. SAE Technical Paper Series. doi:10.4271/2014-01-1213.
- [58] Welling, O., Moss, J., Williams, J., & Collings, N. (2014). Measuring the Impact of Engine Oils and Fuels on Low-Speed Pre-Ignition in Downsized Engines. SAE International Journal of Fuels and Lubricants, 7(1), 1–8. doi:10.4271/2014-01-1219.
- [59] Wei, H., Shang, Y., Chen, C., Gao, D., & Feng, D. (2014). A numerical study on pressure wave-induced end gas auto-ignition near top dead center of a downsized spark ignition engine. International Journal of Hydrogen Energy, 39(36), 21265–21274. doi:10.1016/j.ijhydene.2014.10.008.
- [60] Robert, A., Richard, S., Colin, O., & Poinso, T. (2015). LES study of deflagration to detonation mechanisms in a downsized spark ignition engine. Combustion and Flame, 162(7), 2788–2807. doi:10.1016/j.combustflame.2015.04.010.
- [61] Wang, Z., Qi, Y., Liu, H., Long, Y., & Wang, J.-X. (2015). Experimental Study on Pre-Ignition and Super-Knock in Gasoline Engine Combustion with Carbon Particle at Elevated Temperatures and Pressures. SAE Technical Paper Series. doi:10.4271/2015-01-0752.
- [62] Luo, X., Teng, H., Hu, T., Miao, R., & Cao, L. (2015). An Experimental Investigation on Low Speed Pre-Ignition in a Highly Boosted Gasoline Direct Injection Engine. SAE International Journal of Engines, 8(2), 520–528. doi:10.4271/2015-01-0758.
- [63] Morikawa, K., Moriyoshi, Y., Kuboyama, T., Imai, Y., Yamada, T., & Hatamura, K. (2015). Investigation and Improvement of LSPI Phenomena and Study of Combustion Strategy in Highly Boosted SI Combustion in Low Speed Range. SAE Technical Paper Series. doi:10.4271/2015-01-0756.
- [64] Onodera, K., Kato, T., Ogano, S., Fujimoto, K., Kato, K., & Kaneko, T. (2015). Engine Oil Formulation Technology to Prevent Pre-ignition in Turbocharged Direct Injection Spark Ignition Engines. SAE Technical Paper Series. doi:10.4271/2015-01-2027.
- [65] Andrews, A., Burns, R., Dougherty, R., Deckman, D., & Patel, M. (2016). Investigation of Engine Oil Base Stock Effects on Low Speed Pre-Ignition in a Turbocharged Direct Injection SI Engine. SAE International Journal of Fuels and Lubricants, 9(2), 400–407. doi:10.4271/2016-01-9071.
- [66] Fan, C., Tong, S., Xu, X., Li, J., He, X. Y., Deng, J., & Li, L. (2016). Characteristics of Lubricants on Auto-ignition under Controllable Active Thermo-Atmosphere. SAE International Journal of Fuels and Lubricants, 9(2), 358–362. doi:10.4271/2016-01-0889.
- [67] Chen, Y., Li, L., Zhang, Q., Deng, J., Xie, W., Zhang, E., & Tong, S. (2017). Effects of Lubricant Additives on Auto-Ignition under a Hot Co-Flow Atmosphere. SAE Technical Paper Series. doi:10.4271/2017-01-2231.
- [68] Luisi, S., Doria, V., Stroppiana, A., Millo, F., & Mirzaeian, M. (2015). Experimental Investigation on Early and Late Intake Valve Closures for Knock Mitigation through Miller Cycle in a Downsized Turbocharged Engine. SAE Technical Paper Series. doi:10.4271/2015-01-0760.
- [69] Pan, J., Wei, H., Shu, G., Pan, M., Feng, D., & Li, N. (2017). LES analysis for auto-ignition induced abnormal combustion based on a downsized SI engine. Applied Energy, 191, 183–192. doi:10.1016/j.apenergy.2017.01.044.
- [70] Khosravi, M., Harihar, A., Pitsch, H., & Weber, C. (2017). Modeling and Numerical Investigation of Auto-Ignition and Megaknock in Boosted Gasoline Engines. SAE Technical Paper Series. doi:10.4271/2017-01-0519.
- [71] Chevillard, S., Colin, O., Bohbot, J., Wang, M., Pomraning, E., & Senecal, P. K. (2017). Advanced Methodology to Investigate Knock for Downsized Gasoline Direct Injection Engine Using 3D RANS Simulations. SAE Technical Paper Series. doi:10.4271/2017-01-0579.
- [72] Chen, Y., Wang, Y., & Raine, R. (2017). Correlation between cycle-by-cycle variation, burning rate, and knock: A statistical study from PFI and DISI engines. Fuel, 206, 210–218. doi:10.1016/j.fuel.2017.06.016.
- [73] Asif, M., Giles, K., Lewis, A., Akehurst, S., & Turner, N. (2017). Influence of Coolant Temperature and Flow Rate, and Air Flow on Knock Performance of a Downsized, Highly Boosted, Direct-Injection Spark Ignition Engine. SAE Technical Papers. doi:10.4271/2017-01-0664.
- [74] Szybist, J. P., Wagnon, S. W., Splitter, D., Pitz, W. J., & Mehl, M. (2017). The Reduced Effectiveness of EGR to Mitigate Knock at High Loads in Boosted SI Engines. SAE International Journal of Engines, 10(5), 2305–2318. doi:10.4271/2017-24-0061.
- [75] Vafamehr, H., Cairns, A., & Moslem Koupaie, M. (2017). The Competing Chemical and Physical Effects of Transient Fuel Enrichment during Heavy Knock in an Optical SI Engine Using Ethanol Blends. SAE Technical Papers. doi:10.4271/2017-01-0665.
- [76] Haenel, P., Kleeberg, H., de Bruijn, R., & Tomazic, D. (2017). Influence of Ethanol Blends on Low Speed Pre-Ignition in Turbocharged, Direct-Injection Gasoline Engines. SAE International Journal of Fuels and Lubricants, 10(1), 95–105. doi:10.4271/2017-01-0687.

- [77] Wei, H., Shao, A., Hua, J., Zhou, L., & Feng, D. (2018). Effects of applying a Miller cycle with split injection on engine performance and knock resistance in a downsized gasoline engine. *Fuel*, 214, 98–107. doi:10.1016/j.fuel.2017.11.006.
- [78] Wei, H., Chen, C., Shu, G., Liang, X., & Zhou, L. (2018). Pressure wave evolution during two hotspots autoignition within end-gas region under internal combustion engine-relevant conditions. *Combustion and Flame*, 189, 142–154. doi:10.1016/j.combustflame.2017.10.036.
- [79] Cairns, A., Blaxill, H., & Irlam, G. (2006). Exhaust gas recirculation for improved part and full load fuel economy in a turbocharged gasoline engine. *SAE Technical Papers*. doi:10.4271/2006-01-0047.
- [80] Galloni, E., Fontana, G., & Palmaccio, R. (2013). Effects of exhaust gas recycle in a downsized gasoline engine. *Applied Energy*, 105, 99–107. doi:10.1016/j.apenergy.2012.12.046.
- [81] Su, J., Xu, M., Li, T., Gao, Y., & Wang, J. (2014). Combined effects of cooled EGR and a higher geometric compression ratio on thermal efficiency improvement of a downsized boosted spark-ignition direct-injection engine. *Energy Conversion and Management*, 78, 65–73. doi:10.1016/j.enconman.2013.10.041.
- [82] Takaki, D., Tsuchida, H., Kobara, T., Akagi, M., Tsuyuki, T., & Nagamine, M. (2014). Study of an egr system for downsizing turbocharged gasoline engine to improve fuel economy. *SAE Technical Papers*. doi:10.4271/2014-01-1199.
- [83] Teodosio, L., de Bellis, V., & Bozza, F. (2015). Fuel Economy Improvement and Knock Tendency Reduction of a Downsized Turbocharged Engine at Full Load Operations through a Low-Pressure EGR System. *SAE International Journal of Engines*, 8(4), 1508–1519. doi:10.4271/2015-01-1244.
- [84] Luján, J. M., Climent, H., Novella, R., & Rivas-Perea, M. E. (2015). Influence of a low pressure EGR loop on a gasoline turbocharged direct injection engine. *Applied Thermal Engineering*, 89, 432–443. doi:10.1016/j.applthermaleng.2015.06.039.
- [85] Li, T., Yin, T., & Wang, B. (2017). Anatomy of the cooled EGR effects on soot emission reduction in boosted spark-ignited direct-injection engines. *Applied Energy*, 190, 43–56. doi:10.1016/j.apenergy.2016.12.105.
- [86] Bozza, F., De Bellis, V., & Teodosio, L. (2016). Potentials of cooled EGR and water injection for knock resistance and fuel consumption improvements of gasoline engines. *Applied Energy*, 169, 112–125. doi:10.1016/j.apenergy.2016.01.129.
- [87] Shen, K., Li, F., Zhang, Z., Sun, Y., & Yin, C. (2017). Effects of LP and HP cooled EGR on performance and emissions in turbocharged GDI engine. *Applied Thermal Engineering*, 125, 746–755. doi:10.1016/j.applthermaleng.2017.07.064.
- [88] Chao, Y., Lu, H., Hu, Z., Deng, J., Wu, Z., Li, L., Shen, Y., & Yuan, S. (2017). Comparison of Fuel Economy Improvement by High and Low Pressure EGR System on a Downsized Boosted Gasoline Engine. *SAE Technical Papers*. doi:10.4271/2017-01-0682.
- [89] Jadhav, P. D., & Mallikarjuna, J. M. (2017). Effect of EGR on Performance and Emission Characteristics of a GDI Engine - A CFD Study. *SAE Technical Papers*. doi:10.4271/2017-24-0033.
- [90] Remmert, S. M., Cracknell, R. F., Head, R., Schuetze, A., Lewis, A. G. J., Akehurst, S., Turner, J. W. G., & Popplewell, A. (2014). Octane Response in a Downsized, Highly Boosted Direct Injection Spark Ignition Engine. *SAE International Journal of Fuels and Lubricants*, 7(1), 131–143. doi:10.4271/2014-01-1397.
- [91] Jo, Y. S., Bromberg, L., & Heywood, J. (2016). Octane Requirement of a Turbocharged Spark Ignition Engine in Various Driving Cycles. *SAE Technical Papers*. doi:10.4271/2016-01-0831.
- [92] Kramer, U., Lorenz, T., Hofmann, C., Ruhland, H., Klein, R., & Weber, C. (2017). Methane Number Effect on the Efficiency of a Downsized, Dedicated, High Performance Compressed Natural Gas (CNG) Direct Injection Engine. *SAE Technical Papers*. doi:10.4271/2017-01-0776.
- [93] Sroka, Z. J. (2014). Impact of downsizing technology on operating indicators for combustion engine fed with gaseous fuel with low methane content. *Polish Journal of Environmental Studies*, 23(4), 1413–1416.
- [94] Kuti, O. A., Yang, S. Y., Hourani, N., Naser, N., Roberts, W. L., Chung, S. H., & Sarathy, S. M. (2015). A fundamental investigation into the relationship between lubricant composition and fuel ignition quality. *Fuel*, 160, 605–613. doi:10.1016/j.fuel.2015.08.026.
- [95] D'Adamo, A., Berni, F., Breda, S., Lugli, M., Fontanesi, S., & Cantore, G. (2015). A Numerical Investigation on the Potentials of Water Injection as a Fuel Efficiency Enhancer in Highly Downsized GDI Engines. *SAE Technical Papers*. doi:10.4271/2015-01-0393.
- [96] Berni, F., Breda, S., D'Adamo, A., Fontanesi, S., & Cantore, G. (2015). Numerical Investigation on the Effects of Water/Methanol Injection as Knock Suppressor to Increase the Fuel Efficiency of a Highly Downsized GDI Engine. *SAE Technical Papers*. doi:10.4271/2015-24-2499.
- [97] De Bellis, V., Bozza, F., Teodosio, L., & Valentino, G. (2017). Experimental and numerical study of the water injection to improve the fuel economy of a small size turbocharged SI engine. *SAE International Journal of Engines*, 10(2), 550–561. doi:10.4271/2017-01-0540.

- [98] Worm, J., Naber, J., Duncan, J., Barros, S., & Atkinson, W. (2017). Water Injection as an Enabler for Increased Efficiency at High-Load in a Direct Injected, Boosted, SI Engine. *SAE International Journal of Engines*, 10(3), 951–958. doi:10.4271/2017-01-0663.
- [99] Tornatore, C., Siano, D., Marchitto, L., Iacobacci, A., Valentino, G., & Bozza, F. (2017). Water Injection: a Technology to Improve Performance and Emissions of Downsized Turbocharged Spark Ignited Engines. *SAE International Journal of Engines*, 10(5), 2319–2329. doi:10.4271/2017-24-0062.
- [100] Baêta, J. G. C., Pontoppidan, M., & Silva, T. R. V. (2015). Exploring the limits of a down-sized ethanol direct injection spark ignited engine in different configurations in order to replace high-displacement gasoline engines. *Energy Conversion and Management*, 105, 858–871. doi:10.1016/j.enconman.2015.08.041.
- [101] Cho, J., Si, W., Jang, W., Jin, D., Myung, C. L., & Park, S. (2015). Impact of intermediate ethanol blends on particulate matter emission from a spark ignition direct injection (SIDI) engine. *Applied Energy*, 160, 592–602. doi:10.1016/j.apenergy.2015.08.010.
- [102] Jo, Y. S., Bromberg, L., & Heywood, J. (2016). Optimal Use of Ethanol in Dual Fuel Applications: Effects of Engine Downsizing, Spark Retard, and Compression Ratio on Fuel Economy. *SAE International Journal of Engines*, 9(2), 1087–1101. doi:10.4271/2016-01-0786.
- [103] Moslemin Koupaie, M., Cairns, A., Vafamehr, H., & Lanzanova, T. (2017). Cyclically Resolved Flame and Flow Imaging in an SI Engine Operating with Future Ethanol Fuels. *SAE Technical Papers*. doi:10.4271/2017-01-0655.
- [104] Martins, F. P., Boggio, S. D. M., Lacava, P. T., De Andrade, C. R., Penaranda, A., Silva, M. F., & Sbampato, M. E. (2017). A Study about Imaging Post Processing in Flame Front Detection in an Optical Research Engine Operating with Anhydrous Ethanol. *SAE Technical Papers*. doi:10.4271/2017-36-0388.
- [105] Scala, F., Galloni, E., & Fontana, G. (2016). Numerical analysis of a downsized spark-ignition engine fueled by butanol/gasoline blends at part-load operation. *Applied Thermal Engineering*, 102, 383–390. doi:10.1016/j.applthermaleng.2016.03.137.
- [106] Galloni, E., Fontana, G., Staccone, S., & Scala, F. (2016). Performance analyses of a spark-ignition engine firing with gasoline-butanol blends at partial load operation. *Energy Conversion and Management*, 110, 319–326. doi:10.1016/j.enconman.2015.12.038.
- [107] Lattimore, T., Herreros, J. M., Xu, H., & Shuai, S. (2016). Investigation of compression ratio and fuel effect on combustion and PM emissions in a DISI engine. *Fuel*, 169, 68–78. doi:10.1016/j.fuel.2015.10.044.
- [108] Scala, F., Galloni, E., & Fontana, G. (2017). Numerical Analysis of a Spark-Ignition Engine Fueled by Ethanol-Gasoline and Butanol-Gasoline Blends: Setting the Optimum Spark Advance. *SAE Technical Papers*. doi:10.4271/2017-24-0117.
- [109] Tan, X., & Azimov, U. (2017). Diesel engine downsizing with application of biofuels. *International Journal of Energy and Environment*, 8(5), 413–426.
- [110] Su, J., Lin, W., Sterniak, J., Xu, M., & Bohac, S. V. (2014). Particulate Matter Emission Comparison of Spark Ignition Direct Injection (SIDI) and Port Fuel Injection (PFI) Operation of a Boosted Gasoline Engine. *Journal of Engineering for Gas Turbines and Power*, 136(9). doi:10.1115/1.4027274.
- [111] Hoffmann, G., Befrui, B., Berndorfer, A., Piock, W. F., & Varble, D. L. (2014). Fuel System Pressure Increase for Enhanced Performance of GDi Multi-Hole Injection Systems. *SAE International Journal of Engines*, 7(1), 519–527. doi:10.4271/2014-01-1209.
- [112] Su, J., Xu, M., Yin, P., Gao, Y., & Hung, D. (2014). Particle Number Emissions Reduction Using Multiple Injection Strategies in a Boosted Spark-Ignition Direct-Injection (SIDI) Gasoline Engine. *SAE International Journal of Engines*, 8(1), 20–29. doi:10.4271/2014-01-2845.
- [113] Xu, Z., Zhou, Z., Wu, T., Li, T., Cheng, C., & Yin, H. (2016). Investigations of Smoke Emission, Fuel Dilution and Pre-Ignition in a 2.0L Turbo-Charged GDI Engine. *SAE Technical Papers*. doi:10.4271/2016-01-0698.
- [114] Dalla Nora, M., Lanzanova, T., Zhang, Y., & Zhao, H. (2016). Engine Downsizing through Two-Stroke Operation in a Four-Valve GDI Engine. *SAE Technical Papers*. doi:10.4271/2016-01-0674.
- [115] Li, T., Zheng, B., & Yin, T. (2015). Fuel conversion efficiency improvements in a highly boosted spark-ignition engine with ultra-expansion cycle. *Energy Conversion and Management*, 103, 448–458. doi:10.1016/j.enconman.2015.06.078.
- [116] Li, T., Wang, B., & Zheng, B. (2016). A comparison between Miller and five-stroke cycles for enabling deeply downsized, highly boosted, spark-ignition engines with ultra expansion. *Energy Conversion and Management*, 123, 140–152. doi:10.1016/j.enconman.2016.06.038.

- [117] Li, T., Gao, Y., Wang, J., & Chen, Z. (2014). The Miller cycle effects on improvement of fuel economy in a highly boosted, high compression ratio, direct-injection gasoline engine: EIVC vs. LIVC. *Energy Conversion and Management*, 79, 59–65. doi:10.1016/j.enconman.2013.12.022.
- [118] Gheorghiu, V., (2011). Ultra-Downsizing of Internal Combustion Engines: Simultaneous Increasing of Thermal Conversion Efficiency and Power while reducing emissions. HEFAT 2011.
- [119] Sroka, Z. J. (2012). Some aspects of thermal load and operating indexes after downsizing for internal combustion engine. *Journal of Thermal Analysis and Calorimetry*, 110(1), 51–58. doi:10.1007/s10973-011-2064-x.
- [120] Alix, G., Dabadie, J.-C., & Font, G. (2015). An ICE Map Generation Tool Applied to the Evaluation of the Impact of Downsizing on Hybrid Vehicle Consumption. SAE Technical Paper Series. doi:10.4271/2015-24-2385.
- [121] Leach, F., Stone, R., Richardson, D., Lewis, A., Akehurst, S., Turner, J., Remmert, S., Campbell, S., & Cracknell, R. F. (2018). Particulate emissions from a highly boosted gasoline direct injection engine. *International Journal of Engine Research*, 19(3), 347–359. doi:10.1177/1468087417710583.
- [122] Mutzke, J., Scott, B., Stone, R., & Williams, J. (2016). The Effect of Combustion Knock on the Instantaneous Heat Flux in Spark Ignition Engines. SAE Technical Paper Series. doi:10.4271/2016-01-0700.
- [123] Leguille, M., Ravet, F., Le Moine, J., Pomraning, E., Richards, K., & Senecal, P. K. (2017). Coupled Fluid-Solid Simulation for the Prediction of Gas-Exposed Surface Temperature Distribution in a SI Engine. SAE Technical Paper Series. doi:10.4271/2017-01-0669.
- [124] Jatana, G. S., & Kaul, B. C. (2017). Determination of SI Combustion Sensitivity to Fuel Perturbations as a Cyclic Control Input for Highly Dilute Operation. *SAE International Journal of Engines*, 10(3), 1011–1018. doi:10.4271/2017-01-0681.
- [125] Tong, S., Li, H., Yang, Z., Deng, J., Hu, Z., & Li, L. (2015). Cycle Resolved Combustion and Pre-Ignition Diagnostic Employing Ion Current in a PFI Boosted SI Engine. SAE Technical Paper Series. doi:10.4271/2015-01-0881.
- [126] Teodosio, L., De Bellis, V., Bozza, F., & Tufano, D. (2017). Numerical Study of the Potential of a Variable Compression Ratio Concept Applied to a Downsized Turbocharged VVA Spark Ignition Engine. SAE Technical Paper Series. doi:10.4271/2017-24-0015.
- [127] Zhao, D., Winward, E., Yang, Z., Stobart, R., Mason, B., & Steffen, T. (2018). An Integrated Framework on Characterization, Control, and Testing of an Electrical Turbocharger Assist. *IEEE Transactions on Industrial Electronics*, 65(6), 4897–4908. doi:10.1109/TIE.2017.2774726.
- [128] Bonatesta, F., Altamore, G., Kalsi, J., & Cary, M. (2016). Fuel economy analysis of part-load variable camshaft timing strategies in two modern small-capacity spark ignition engines. *Applied Energy*, 164, 475–491. doi:10.1016/j.apenergy.2015.11.057.
- [129] De Bellis, V. (2016). Performance optimization of a spark-ignition turbocharged VVA engine under knock limited operation. *Applied Energy*, 164, 162–174. doi:10.1016/j.apenergy.2015.11.097.
- [130] Li, H., Wang, K., Wang, L., Li, Y., & Fan, J. (2017). Effect of Geometric Structure of Cylinder Head on the Combustion Process in a Diesel Engine. SAE Technical Paper Series. doi:10.4271/2017-01-0692.
- [131] Millo, F., Mirzaeian, M., Luisi, S., Doria, V., & Stroppiana, A. (2016). Engine displacement modularity for enhancing automotive s.i. engines efficiency at part load. *Fuel*, 180, 645–652. doi:10.1016/j.fuel.2016.04.049.
- [132] Dulbecco, A., Richard, S., & Angelberger, C. (2015). Investigation on the Potential of Quantitatively Predicting CCV in DI-SI Engines by Using a One-Dimensional CFD Physical Modeling Approach: Focus on Charge Dilution and In-Cylinder Aerodynamics Intensity. *SAE International Journal of Engines*, 8(5), 2012–2028. doi:10.4271/2015-24-2401.