



**Melatonin inhibits the sphingosine kinase 1/sphingosine-1-phosphate signaling pathway in rabbits with fulminant hepatitis of viral origin**

Journal:	<i>Journal of Pineal Research</i>
Manuscript ID	JPI-OM-02-16-0043.R1
Manuscript Type:	Original Manuscript
Date Submitted by the Author:	n/a
Complete List of Authors:	Crespo, Irene; Centro de Investigación Biomédica en Red de Enfermedades Hepáticas y Digestivas (CIBERehd), Spain ; Centro de Investigación Biomédica en Red de Enfermedades Hepáticas y Digestivas (CIBERehd), Spain SanMiguel, Beatriz; Institute of Biomedicine (IBIOMED), University of León; Centro de Investigación Biomédica en Red de Enfermedades Hepáticas y Digestivas (CIBERehd), Spain Sánchez , Diana Isabel; Institute of Biomedicine (IBIOMED), University of León, González, Bárbara; Institute of Biomedicine (IBIOMED), University of León, Alvarez, Marcelino; University of León, Department of Animal health Gonzalez-Gallego, J.; Institute of Biomedicine (IBIOMED), University of León; Centro de Investigación Biomédica en Red de Enfermedades Hepáticas y Digestivas (CIBERehd), Spain Tuñon, Maria J; Institute of Biomedicine (IBIOMED), University of León; Centro de Investigación Biomédica en Red de Enfermedades Hepáticas y Digestivas (CIBERehd), Spain
Keywords:	liver, sphingosine kinase 1, sphingosine-1-phosphate, acute liver failure, melatonin

SCHOLARONE™  
Manuscripts

1  
2  
3  
4  
5  
6  
7 **Melatonin inhibits the sphingosine kinase 1/sphingosine-1-phosphate signaling**  
8 **pathway in rabbits with fulminant hepatitis of viral origin**  
9

10  
11  
12  
13  
14  
15  
16 **Irene Crespo<sup>1,2</sup>, Beatriz San-Miguel<sup>1,2</sup>, Diana I Sánchez<sup>1</sup>, Bárbara González-Fernández<sup>1</sup>,**  
17 **Marcelino Álvarez<sup>3</sup>, Javier González-Gallego<sup>1,2</sup>, and María J. Tuñón<sup>1,2</sup>**  
18  
19

20  
21  
22  
23 <sup>1</sup>Institute of Biomedicine (IBIOMED), University of León, <sup>2</sup>Centro de Investigación Biomédica en  
24 Red de Enfermedades Hepáticas y Digestivas (CIBERehd), Spain, <sup>3</sup>Department of Animal Health,  
25  
26 University of León, León, Spain.  
27  
28  
29  
30  
31  
32  
33  
34  
35  
36  
37  
38  
39  
40

41 Running head: Sphingosine kinase 1/sphingosine-1-phosphate pathway and melatonin  
42  
43  
44

45 Address reprint requests to María J. Tuñón, PhD, Institute of Biomedicine, University of León,  
46 24071-León, Spain. Phone: +34 987 291261; Fax: +34 987 291267. E-mail: mjtung@unileon.es  
47  
48  
49  
50

51 Key words: liver, sphingosine kinase 1, sphingosine-1-phosphate, acute liver failure, melatonin  
52  
53  
54  
55  
56  
57  
58  
59  
60

1  
2  
3  
4 Abstract: The sphingosine kinase (SphK)1/sphingosine-1-phosphate (S1P) pathway is involved in  
5  
6 multiple biological processes, including liver diseases. This study **investigate** whether modulation  
7  
8 of the SphK1/S1P system associates to the beneficial effects of melatonin in an animal model of  
9  
10 acute liver failure (ALF) induced by the rabbit hemorrhagic disease virus (RHDV). Rabbits were  
11  
12 experimentally infected with  $2 \times 10^4$  hemagglutination units of a RHDV isolate and received 20  
13  
14 mg/kg of melatonin at 0 hr, 12 hr and 24 hr postinfection. Liver mRNA levels, protein  
15  
16 concentration and immunohistochemical labelling for SphK1 increased in RHDV-infected rabbits.  
17  
18 S1P production and protein expression of the S1PR1 receptor were significantly elevated following  
19  
20 RHDV infection. These effects were significantly **reduced by melatonin**. Rabbits also exhibited  
21  
22 increased expression of toll-like receptor (TLR)4, tumor necrosis factor alpha (TNF- $\alpha$ ), interleukin  
23  
24 (IL)-6, nuclear factor-kappa B (NF- $\kappa$ B) p50 and p65 subunits and phosphorylated inhibitor of kappa  
25  
26 B (I $\kappa$ B) $\alpha$ . Melatonin administration significantly inhibited those changes and **induced a** decreased  
27  
28 immunoreactivity for RHDV viral VP60 antigen in the liver. Results obtained indicate that the  
29  
30 SphK1/S1P system activates in parallel to viral replication and the inflammatory process induced by  
31  
32 the virus. Inhibition of the lipid signaling pathway by the **indole** reveals novel molecular pathways  
33  
34 that may account for the protective effect of melatonin in this animal model of ALF, and supports  
35  
36 the potential of melatonin as an antiviral agent.  
37  
38  
39  
40  
41  
42  
43  
44  
45  
46  
47  
48  
49  
50  
51  
52  
53  
54  
55  
56  
57  
58  
59  
60

## Introduction

Sphingolipids represent a major class of lipids that form components of cellular membranes and play important roles in diverse cellular events, such as cell growth arrest, senescence, apoptosis, or inflammation [1]. Sphingosine-1-phosphate (S1P), a pleiotropic bioactive lipid mediator, is formed by the phosphorylation of sphingosine by sphingosine kinases (SphK) and regulates an array of biological activities in various cell types [2]. Two isoforms of mammalian SphK (SphK1 and SphK2) have been cloned and characterized. SphK1, the predominant isoform in many cells, plays a central role in the so-called 'sphingolipid rheostat' as it controls the balance between the levels of the sphingolipids ceramide, sphingosine, and S1P [3]. Different stimuli activate SphK1 by inducing its phosphorylation and translocation to the plasma membrane, where S1P is produced [4]. Most of the characterized actions of S1P are mediated through a family of five G protein-coupled receptors (S1PR types 1-5) [5]. S1PR1, S1PR2, and S1PR3 are expressed by a wide variety of tissues, while S1PR4 expression is confined to lymphoid and haematopoietic tissue and S1PR5 expression to the central nervous system [6]. Tumor necrosis factor (TNF) $\alpha$ -dependent activation of SphK1 and binding of S1P to S1PR1 receptor, has been reported to promote nuclear factor-kappa B (NF- $\kappa$ B) activation and signal transducer and activator of transcription 3 (STAT3)-mediated interleukin (IL)-6 formation, contributing to a feed-forward amplification loop which plays an important role in inflammation and cancer [4,7].

In the last few years a number of studies have approached the biological significance of the SphK1/S1P signalling pathway in liver diseases. A role of S1P receptors has been reported in the wound healing response to liver injury induced by carbon tetrachloride and in cholestasis-induced liver fibrosis, respectively [8,9]. It has been shown that S1P plays a significant role in regeneration

1  
2  
3 and fibrosis in diethylnitrosamine-treated mice [10], and that intracellular S1P contributes to  
4 collagen expression of hepatic miofibroblasts in human fibrosis [11]. SphK1 also mediates  
5 inflammation in nonalcoholic fatty liver disease [12] and it has been very recently reported that  
6 deletion of SphK1 ameliorates hepatic steatosis in obese mice [13]. Acute liver failure (ALF) is an  
7 unusual, severe and often fatal, condition resulting of rapid hepatocyte injury occurring over days or  
8 a few weeks, and encompassing multiple etiologies. Liver transplantation is the only therapy of  
9 proven benefit, but the rapidity of progression and the variable course of the disease limit its use  
10 [14]. Therefore, identification of new molecular targets may be useful in AFL therapy. However,  
11 the exact functional role of S1P as well as the therapeutic potential of strategies aimed at  
12 SphK1/S1P signalling in AFL is still unknown.

13  
14  
15  
16  
17  
18  
19  
20  
21  
22  
23  
24  
25  
26  
27  
28  
29  
30  
31  
32  
33  
34  
35  
36  
37  
38  
39  
40  
41  
42  
43  
44  
45  
46  
47  
48  
49  
50  
51  
52  
53  
54  
55  
56  
57  
58  
59  
60

Viral infections due to hepatitis B virus, hepatitis A virus, and hepatitis E virus are common causes of ALF, mainly in particular geographical areas of the world [15]. Recently, several studies have addressed the role of S1P in viral infections and shown that bovine viral diarrhea virus [16] or dengue virus [17] inhibit SphK1 activity, leading to enhanced virus replication. In contrast, respiratory syncytial virus [18], human cytomegalovirus [19], and influenza virus [3,20] increase the activation of SphK1. Therefore, SphK1 activity is differentially regulated depending on the type of virus, presumably because viruses have developed specialized strategies to employ host cellular machinery for their own advantage [21,22]. Our research group has described a new animal model of ALF using experimental infection of rabbits with the rabbit hemorrhagic disease virus (RHDV) which reproduces the most representative biochemical and histologic parameters and clinical signs of the human disease [23,24]. Different studies with the RHDV have demonstrated that melatonin reduces liver damage in RHDV-infected rabbits by a combination of anti-oxidant, anti-inflammatory and anti-apoptotic effects, being also able to reduce viral replication [25-28]. However, information on the relationship between melatonin and sphingolipid metabolism is

1  
2  
3 scarce, and only one research indicating an association of melatonin with SphK1 inhibition in  
4  
5 prostate cancer cells has been published until now [29]. In the present work we first investigated if  
6  
7 RHDV infection induces changes in the SphK1/S1P signalling pathway. Subsequently, the potential  
8  
9 contribution of this system to the protective effects of melatonin was analysed. Results obtained  
10  
11 support the usefulness of melatonin as an antiviral agent and the interest of the SphK1/S1P system  
12  
13 as an attractive target for therapeutic interventions in AFL.  
14  
15  
16  
17

## 18 **Materials and methods**

### 19 **Virus and experimental model**

20  
21  
22  
23  
24 Nine-week-old male New Zealand white rabbits were kept in the animal facility of the University of  
25  
26 León with 12-hr light cycle at 21-22°C and 50% relative humidity. They were given a standard dry  
27  
28 rabbit food and water *ad libitum*. Effects of melatonin were studied by sacrificing control rabbits  
29  
30 and batches of infected animals at 18, 24, 30 and 36 hr post infection (hpi). Infection was induced  
31  
32 by i.m. injection of  $2 \times 10^4$  hemagglutination units of an RHDV isolate [23]. Melatonin was given  
33  
34 (20 mg/kg body weight i.p.) at 0, 12 and 24 hpi; untreated animals received 4 mL of vehicle at 0, 12  
35  
36 and 24 hpi. Melatonin (Sigma, St Louis, MO, USA) was dissolved into absolute ethanol and further  
37  
38 dilutions were made in saline. The final concentration of ethanol was 5%.  
39  
40  
41  
42

43 The study was carried out in strict accordance with the recommendations in the Guide for the  
44  
45 Care and Use of Laboratory Animals of the National Institutes of Health, and was specifically  
46  
47 approved by the Ethics Committee of the University of León.  
48  
49  
50  
51

### 52 **Real-time RT-PCR**

53  
54  
55 Total RNA was extracted from frozen rabbit liver using a Trizol reagent (Life Technologies,  
56  
57 Madrid, Spain) and quantified using NANO DROP 1000 spectrophotometer (Thermo Scientific,  
58  
59  
60

1  
2  
3 Wilmington, DE). Residual genomic DNA was removed by incubating RNA with RQ1 RNase-free  
4  
5 DNase (Promega, Madison, WI). RNA integrity was confirmed by formaldehyde gel  
6  
7 electrophoresis. Total RNA (1  $\mu$ g) was reverse transcribed as described [30] and mRNA was  
8  
9 determined by real time PCR analysis using SYBR Green I Master (Roche Diagnostics GmbH,  
10  
11 Mannheim, Germany) and the appropriate primers (5'-GCTGGCCGCTTCTCTGAAC-3' and 5'-  
12  
13 GCTGGCCGCTTCTCTGAAC-3' for SphK1 and 5'-TGGCATCCTGACGCTCAA-3' and 5'-  
14  
15 TCGTCCCAGTTGGTCACGAT-3' for  $\beta$ -Actin). Relative changes in gene expression levels were  
16  
17 determined using the  $2^{-\Delta\Delta Ct}$  method as described [25]. The cycle number at which the transcripts  
18  
19 were detectable (Ct) was normalized to the cycle number of  $\beta$ -Actin gene detection, referred to as  
20  
21  $\Delta$ Ct.  
22  
23  
24  
25  
26  
27  
28  
29

### 30 **Western blot analysis**

31  
32 For Western blot analysis liver tissue (0,2 gr) was homogenised in 1 mL RIPA buffer containing  
33  
34 protease and phosphatase inhibitor cocktails (Roche Diagnostics GmbH), maintaining temperature  
35  
36 at 4°C throughout all procedures. Then the homogenate was incubated on ice for 30 min and finally  
37  
38 the samples were centrifuged at 13,000g for 30 min at 4°C. The supernatant fraction was stored at -  
39  
40 80°C in aliquots until use. Protein concentration was measured by Bradford assay. Equal amounts  
41  
42 of protein extracts (30  $\mu$ g) were separated by 7-12% sodium dodecyl sulphate (SDS)-  
43  
44 polyacrylamide gel electrophoresis and transferred electrically to polyvinylidene difluoride  
45  
46 membranes (Millipore; Bedford, MA, USA). The membranes were then blocked with 5% non-fat  
47  
48 dry milk in Tris-buffered saline containing 0.05% Tween 20 (TBST) for 30 min at 37°C and probed  
49  
50 overnight at 4°C with polyclonal anti p50, p65 (Santa Cruz Biotechnology, Santa Cruz, CA, USA),  
51  
52 phospho-I $\kappa$ B $\alpha$ , I $\kappa$ B $\alpha$  (Cell Signaling Technology, Danvers, MA, USA) and anti TNF- $\alpha$ , TLR4,  
53  
54  
55  
56  
57  
58  
59  
60

1  
2  
3 IL-6, SphK1 and S1PR1 (Abcam; Cambridge, UK) antibodies at 1:200-1:1,000 dilution with PBST  
4  
5 containing 2.5% non-fat dry milk. Equal loading of protein was demonstrated by probing the  
6  
7 membranes with a rabbit anti Actin polyclonal antibody (1:2,000; Sigma). After washing with  
8  
9 TBST, the membranes were incubated for 1 hr at room temperature with secondary HRP  
10  
11 conjugated antibody (Dako, Glostrup, Denmark, 1:5,000), and visualized using ECL detection kit  
12  
13 (Amersham Pharmacia; Uppsala, Sweden) [26]. The density of the specific bands was quantified  
14  
15 with an imaging densitometer (Scion Image J Software 1.46a; Bethesda, MD, USA).  
16  
17  
18  
19

## 20 21 22 **Immunohistochemistry**

23  
24 Tissue samples were recovered, fixed in 10% buffered formalin and embedded in paraffin. Sections  
25  
26 (4  $\mu\text{m}$ ) were dewaxed and hydrated through graded ethanol, cooked in 25 mM citrate buffer, pH  
27  
28 6.0, in a pressure cooker for 10 min, transferred into boiling deionized water and let to cool for 20  
29  
30 min. Tissue sections were then treated with 3% hydrogen peroxide to inactivate endogenous  
31  
32 peroxidase activity. The slides were incubated with rabbit anti SphK1, S1PR1 (Abcam), and mouse  
33  
34 anti-VP60 (Ingenasa, Madrid, Spain) antibodies overnight at 4°C. Subsequently, the sections were  
35  
36 incubated for 30 min using the EnVision+ system and developed with a solution of 3-3-  
37  
38 diaminobenzidine (DAB) (Vector Lab; Burlingame, CA, USA). The slides were stained with  
39  
40 hematoxylin for 10 s and mounted. The specificity of the technique was evaluated by negative  
41  
42 controls (omitting the incubation with the primary antibody and incubating it with non-immune  
43  
44 sera). Pathological findings were assessed by one of the authors blinded to the group allocations.  
45  
46  
47  
48  
49  
50

## 51 52 53 **Assay for S1P levels**



1  
2  
3 S1P was tested by ELISA using a commercial kit (Echelon Biosciences, UT, USA). Quantitative  
4  
5 S1P assays were done in duplicate on all liver homogenate samples according to manufacturer's  
6  
7 instructions. The levels were expressed as pmol/ $\mu$ g of protein.  
8  
9

## 10 11 12 13 **Results**

14  
15 In order to confirm if the SphK1/S1P axis was induced in RHDV-infected rabbits,  
16 immunohistochemistry for SphK1 was performed. Immunoreactivity was negative in liver sections  
17  
18 from control rabbits, and increased progressively in the RHDV-infected group (Fig. 1A, B). Parallel  
19  
20 changes were observed in the mRNA levels and protein concentration of the enzyme (Fig. 1C, D).  
21  
22 All these effects were significantly abrogated in animals receiving melatonin (Fig. 1A-D).  
23  
24  
25

26  
27 To investigate whether RHDV-induced SphK1 activation increases intracellular S1P (the product  
28  
29 of SphK1), S1P was tested by ELISA at several time points after RHDV infection. Our data indicate  
30  
31 that RHDV infection significantly increased the level of S1P in rabbit liver (Fig. 2D). However,  
32  
33 melatonin administration significantly dampened the elevation of S1P level.  
34  
35

36  
37 Since binding of S1P to the S1PR1 receptor has been shown to be playing a role in the activation  
38  
39 of inflammatory pathways, we first investigated whether this receptor is expressed in rabbit cells.  
40  
41 Western blot analysis indicated that S1PR1 was detectable in control rabbits and its expression  
42  
43 increased significantly in animals infected with the RHDV (Fig. 2C). This issue was further  
44  
45 confirmed by S1PR1 immunohistochemical labelling (Fig. 2A, B). Protein concentration and  
46  
47 immunoreactivity were significantly lower in animals treated with melatonin (Fig. 2A-C).  
48  
49

50  
51 Given the well-known role of the SphK1/S1P system on inflammation, expression of different  
52  
53 inflammatory markers was studied in RHDV-infected and melatonin-treated rabbits. As shown in  
54  
55 Fig.3 expression of TNF- $\alpha$  and IL-6 was significantly elevated in infected rabbits and this effect  
56  
57  
58  
59  
60

1  
2  
3 associated to an increased expression of TLR4. Changes in the NF- $\kappa$ B-mediated signalling pathway  
4  
5 were shown by a significant increase in the concentration of p50 and p65 NF- $\kappa$ B subunits, a  
6  
7 reduced expression of I $\kappa$ B $\alpha$ , and an enhanced phosphorylation of the inhibitor. These effects were  
8  
9 significantly attenuated in rabbits treated with melatonin.  
10  
11

12  
13 Finally, to analyse the relationship between changes in the SphK1/S1P pathway and viral  
14  
15 replication, the presence of the virus in the liver of RHDV-infected rabbits was detected by  
16  
17 immunohistochemical staining of the viral VP60 antigen. Results obtained show a progressive  
18  
19 increase in the extent of labelling in RHDV-infected animals. Decreased immunoreactivity in  
20  
21 rabbits treated with melatonin confirms the inhibitory role of the indol on RHDV replication (Fig.  
22  
23 4A, B).  
24  
25  
26  
27  
28  
29

## 30 Discussion

31  
32 S1P is now recognized as a powerful mediator of many vital cellular processes, and a plethora of  
33  
34 roles have emerged in the regulation of phenomena as inflammation or viral replication. The  
35  
36 development of the sphingosine analogue FTY720 has proven the potential beneficial effects of  
37  
38 targeting SphK1/S1P signaling in human diseases and the interest of developing a sphingolipid-  
39  
40 centered therapeutics [31]. Mechanisms responsible for liver injury in acute severe hepatitis leading  
41  
42 to AFL are complex and include the virus cytopatic effect, the damage induced by an exacerbated  
43  
44 immune response, and the citotoxicity of immune effectors [32]. The development by our group of a  
45  
46 highly reproducible model of virus-induced ALF has offered a valuable tool to test protective  
47  
48 therapies in this condition and to identify the responsible mechanisms [33]. Previous studies have  
49  
50 shown that in rabbits with fulminant hepatitis induced by the RHDV a combination of effects  
51  
52 contribute to reduce liver damage [25-27]. Data obtained in the present research indicate that  
53  
54  
55  
56  
57  
58  
59  
60

1  
2  
3 inhibition of SphK1/S1P signaling may be a novel mechanism contributing to the benefits of  
4  
5 melatonin treatment in this animal model of ALF.  
6  
7

8 S1P has been linked to the production of proinflammatory cytokines and inflammation, and  
9  
10 different research suggests that pharmacological agents targeting the function of S1P and its  
11  
12 receptors show therapeutic potential for treating a wide range of inflammatory disorders [4,7]. We  
13  
14 demonstrate in our study that hepatic SphK1 activity is upregulated in RHDV-infected rabbits, with  
15  
16 an increased production of S1P and enhanced protein level of S1PR1, which associate to a higher  
17  
18 TNF- $\alpha$  and IL-6 expression. Melatonin significantly reduced, as previously reported [34],  
19  
20 expression of the proinflammatory markers, and also resulted in a clear inhibition of the SphK1/S1P  
21  
22 system. Some studies have shown that suppression of the SphK1/S1P pathway contributes to the  
23  
24 anti-inflammatory effect of different therapeutic agents. Thus, the flavone apigenin decreases serum  
25  
26 levels of IL-1 $\beta$ , IL-6 and TNF- $\alpha$  in a lipopolysaccharide-induced endotoxemic rat model, and this  
27  
28 effect relates to a lowered SphK1 activity and S1P level in heart; in addition, apigenin also inhibits  
29  
30 the SphK1/S1P system, resulting in a lowered inflammatory response, in rat embryonic heart-  
31  
32 derived H9c2 cells [35]. In murine models of inflammatory arthritis, chemical inhibition or siRNA  
33  
34 knockdown of SphK1 results in reduced inflammation [36]. The synthetic sphingosine analog  
35  
36 FTY720 phosphate, by binding to and inducing functional antagonism of the S1PR1, reduces  
37  
38 proinflammatory cytokine release by astrocytes in mice with multiple sclerosis [37].  
39  
40  
41  
42  
43  
44  
45

46 NF- $\kappa$ B is a transcription factor acting as a known pleiotropic regulator of various genes  
47  
48 involved in inflammatory responses. Many biological stimuli result in the phosphorylation and  
49  
50 degradation of the I $\kappa$ B $\alpha$  inhibitor, causing the nuclear translocation of NF- $\kappa$ B heterodimers to the  
51  
52 nucleus [38]. SphK1 and S1P are necessary for the phosphorylation of I $\kappa$ B $\alpha$  and IKK $\alpha$ , an  
53  
54 upstream regulator of I $\kappa$ B $\alpha$  degradation, leading to NF- $\kappa$ B activation, which has therefore been  
55  
56  
57  
58  
59  
60

1  
2  
3 proposed to be crucial for connecting the activated SphK1/S1P signaling pathway with  
4 inflammation [39]. High fructose feeding in rats or stimulation of BRL3A cells with fructose  
5 induces an elevation of SphK1 activity and S1P production, with a subsequent increased  
6 phosphorylation of I $\kappa$ B $\alpha$  and IKK $\alpha$ , NF- $\kappa$ B activation, and increase of IL-1 $\beta$ , IL-6 and TNF- $\alpha$   
7 protein levels; inhibition of the SphK1/S1P pathway by morin, results in a reduction of NF- $\kappa$ B  
8 activation and pro-inflammatory cytokine levels in both experimental models [40]. Glabridin has  
9 been shown to inhibit TNF- $\alpha$ -induced ICAM-1 expression in HUVEC cells by blocking SphK1  
10 activity and S1P generation, an effect associated to I $\kappa$ B $\alpha$  phosphorylation and NF- $\kappa$ B activation  
11 [41]. In addition, experimental diabetic nephropathy models, berberine inhibits SphK1 activity and  
12 S1P production, also suppressing NF- $\kappa$ B activation [42]. Our finding of a parallel inhibition of the  
13 SphK1/S1P and NF- $\kappa$ B pathways, suggest that NF- $\kappa$ B activation mediated by the S1P system may  
14 play role in the protective effect of the flavonoid on hepatic inflammation. Moreover, melatonin  
15 action could also be connected to the observed downregulation of TLR4, a transmembrane protein  
16 which may ignite cascades of proinflammatory mediators, thus aggravating hepatocellular damage  
17 in severe forms of acute liver disease [34,43]. Previous studies have shown that lipopolysaccharide  
18 stimulation of TLR4 in macrophages increases SphK1 mRNA and activity, resulting in generation  
19 of S1P [44], and blockade of SphK1 has been found to inhibit TLR-induced NF- $\kappa$ B activation and  
20 production of proinflammatory cytokines in septic mice [45].  
21  
22  
23  
24  
25  
26  
27  
28  
29  
30  
31  
32  
33  
34  
35  
36  
37  
38  
39  
40  
41  
42  
43  
44  
45

46 Understanding of the role of sphingolipids at the level of viral pathogenicity is still in its infancy  
47 and may vary considerably depending on the virus and type of disease [22]. Nevertheless, a number  
48 of studies have addressed in the last years the roles of SphK1 in viral infection. Stimulation of  
49 SphK1 activity is associated with increased viral replication and cell survival of syncytial virus,  
50 human cytomegalovirus or influenza virus [20,46]. However, reduction in SphK1 activity is  
51  
52  
53  
54  
55  
56  
57  
58  
59  
60

1  
2  
3 required for successful viral infection by the bovine viral diarrhea virus, and in dengue virus it has  
4  
5 been suggested that therapeutic inhibition may have dual benefits in the disease by reducing  
6  
7 production of inflammatory mediators and assisting clearance of virus-infected cells [16,46]. We  
8  
9  
10 have previously reported that melatonin reduces VP60 immunohistochemical labelling and VP60  
11  
12 mRNA expression in hepatocytes from RHDV-infected rabbits [27]. Data from the present study  
13  
14 confirm a decreased presence of the viral protein VP60 in the liver. In cells infected with the  
15  
16 measles virus it has been previously shown that SphK1 inhibition impairs viral protein expression  
17  
18 and infectious viral production, being this effect mediated by modulation of the NF- $\kappa$ B signal  
19  
20 pathway, because the use of NF- $\kappa$ B specific inhibitors blocks viral replication [47]. It is also known  
21  
22 that influenza virus increases expression/activation of SphK1 and inhibition of the enzyme  
23  
24 suppresses the activation of NF- $\kappa$ B to reduce viral RNA synthesis [20]. Thus, results here obtained  
25  
26 support a potential pro-viral role of the SphK1/S1P axis in the replication of the RHDV virus, and  
27  
28 its modulation by the NF- $\kappa$ B pathway. Regulation of the sphingolipid pathway could play a role in  
29  
30 the inhibition of viral replication by melatonin, although other mechanisms previously reported to  
31  
32 be modulated by the indole, such as decreased activity of antioxidant enzymes, activation of Nrf2  
33  
34 signaling and changes in the autophagic response may also make a significant contribution [26,27].  
35  
36  
37  
38  
39  
40

41 In conclusion, we here describe novel features of the SphK1/S1P axis within the liver,  
42  
43 providing evidence that the hepatic SphK1/S1P system activates in rabbits experimentally infected  
44  
45 with the RHDV and that inhibition of this signaling pathway by melatonin associates to an anti-  
46  
47 inflammatory effect and to a lowered RHDV replication induced by the indole. Melatonin has very  
48  
49 high safety profile and no deaths or serious toxicity associated to its usage has been reported.  
50  
51 Moreover, different studies have found melatonin being effective in fighting viral infections in a  
52  
53 variety of experimental animal and *in vitro* studies [48,49]. Although further studies are required to  
54  
55  
56  
57  
58  
59  
60

1  
2  
3 a better knowledge of melatonin effects on virus-host interactions, data obtained reveal novel  
4  
5 molecular pathways that may account for the protective effect of melatonin in virus-induced ALF,  
6  
7 and support a possible therapeutical potential for melatonin in human virus-induced disorders.  
8  
9

## 10 11 12 13 14 **Acknowledgements**

15  
16  
17 DI. Sánchez is granted by AECC. CIBEREHD is funded by Instituto de Salud Carlos III, Spain.  
18  
19

## 20 21 22 **References**

- 23  
24  
25 1. MERRILL AH Jr. Sphingolipid and glycosphingolipid metabolic pathways in the era of  
26  
27 sphingolipidomics. *Chem Rev* 2011; **111**:6387-6422.  
28  
29 2. PITSON SM. Regulation of sphingosine kinase and sphingolipid signaling. *Trends Biochem Sci*  
30  
31 2011; **36**:97-107.  
32  
33 3. SEO YJ, BLAKE C, ALEXANDER S, HAHM B. Sphingosine 1-phosphate-metabolizing  
34  
35 enzymes control influenza virus propagation and viral cytopathogenicity. *J Virol* 2010;  
36  
37 **84**:8124-8131.  
38  
39 4. NAGAHASHI M, HAIT NC, MACEYKA M et al. Sphingosine-1-phosphate in chronic intestinal  
40  
41 inflammation and cancer. *Adv Biol Reg* 2014; **54**:112-120.  
42  
43 5. SPIEGEL S, MILSTIEN S. Sphingosine-1-phosphate: An enigmatic signalling lipid. *Nat Rev*  
44  
45 *Mol Cell Biol* 2003; **4**:397-407.  
46  
47 6. SANCHEZ T, HLA T. Structural and functional characteristics of S1P receptors. *J Cell Biochem*  
48  
49 2004; **92**:913-922.  
50  
51 7. PYNE NJ, OHOTSKI J, BITTMAN R et al. The role of sphingosine-1-phosphate in  
52  
53 inflammation and cancer. *Adv Biol Reg* 2014; **54**:121-129.  
54  
55  
56  
57  
58  
59  
60

- 1  
2  
3 8. SERRIERE-LANNEAU V, TEIXEIRA-CLERC F, LI LY et al. The sphingosine 1-phosphate  
4  
5 receptor S1P2 triggers hepatic wound healing. *FASEB J* 2007; **21**:2005-2013.  
6  
7
- 8 9. LI C, YIANG X, YANG L et al. Involvement of sphingosine 1-phosphate (SIP)/S1P3 signaling  
9  
10 in cholestasis-induced liver fibrosis. *Am J Pathol* 2009; **175**:1464-1472.  
11  
12
- 13 10. IKEDA H, WATANABE N, ISHII I et al. Sphingosine 1-phosphate regulates regeneration and  
14  
15 fibrosis after liver injury via sphingosine 1-phosphate receptor 2. *J Lipd Res* 2009; **50**:556-  
16  
17 564.  
18  
19
- 20 11. XIU L, CHANG N, YANG L et al. Intracellular sphingosine 1-phosphate contributes to  
21  
22 collagen expression of hepatic myofibroblasts in human liver fibrosis independent of its  
23  
24 receptors. *Am J Pathol* 2015; **185**:387-398.  
25  
26
- 27 12. GENG T, SUFFER A, HARLAND MD et al. SphK1 mediates hepatic inflammation in a mouse  
28  
29 model of NASH induced by high saturated fat feeding and initiates proinflammatory  
30  
31 signaling in hepatocytes. *J Lipd Res* 2015; **56**:2359-2371.  
32  
33
- 34 13. CHEN J, WANG W, QI Y et al. Deletion of sphingosine kinase 1 ameliorates hepatic steatosis  
35  
36 in diet-induced obese mice: Role of PPAR $\gamma$ . *Biochem Biophys Acta* 2016; **1861**:138-147.  
37  
38
- 39 14. MENDIZABAL M, SILVA MO. Liver transplantation in acute liver failure: A challenging  
40  
41 scenario. *World J Gastroenterol* 2016; **22**:1523-1531.  
42  
43
- 44 15. NGUYEN NT, VIERLING JM. Acute liver failure. *Curr Opin Organ Transplant* 2011; **16**:289-  
45  
46 296.  
47  
48
- 49 16. YAMANE D, ZAHOOR MA, MOHAMED YM et al. Inhibition of sphingosine kinase by  
50  
51 bovine viral diarrhea virus NS3 is crucial for efficient viral replication and cytopathogenesis.  
52  
53 *J Biol Chem* 2009; **284**:13648-13659.  
54  
55
- 56 17. WATI S, RAWLINSON SM, IVANOV RA et al. Tumor necrosis factor alpha (TNF- $\alpha$ )  
57  
58 stimulation of cells with established dengue virus type 2 infection induces cell death that is  
59  
60

- 1  
2  
3 accompanied by a reduced ability of TNF- $\alpha$  to activate nuclear factor  $\kappa$ B and reduced  
4  
5 sphingosine kinase 1 activity. *J Gen Virol* 2011; **92**:807-818.  
6  
7
- 8 18. MONICK MM, CAMERON K, POWERS LS et al. Sphingosine kinase mediates activation of  
9  
10 extracellular signal-related kinase and Akt by respiratory syncytial virus. *Am J Respir Cell*  
11  
12 *Mol Biol* 2004; **30**:844-852.  
13  
14
- 15 19. MACHESKY NJ, ZHANG G, RAGHAVAN B et al. Human cytomegalovirus regulates  
16  
17 bioactive sphingolipids. *J Biol Chem* 2008; **283**:26148-26160.  
18  
19
- 20 20. SEO YJ, PRITZL CJ, VIJAYAN M et al. Sphingosine kinase 1 serves as a pro-viral factor by  
21  
22 regulating viral RNA synthesis and nuclear export of viral ribonucleoprotein complex upon  
23  
24 influenza virus infection. *PLoS One* 2013; **8**:e75005.  
25  
26
- 27 21. VIJAYAN M, HAHM B. Influenza viral manipulation of sphingolipid metabolism and  
28  
29 signaling to modulate host defense system. *Scientifica* 2014; **2014**:793815.  
30  
31
- 32 22. SCHNEIDER-SCHAULIES J, SCHNEIDER-SCHAULIES S. Sphingolipids in viral infection.  
33  
34 *Biol Chem* 2015; **396**:585-595.  
35  
36
- 37 23. TUÑÓN MJ, SÁNCHEZ-CAMPOS S, GARCÍA FERRERAS J et al. Rabbit hemorrhagic viral  
38  
39 disease: characterization of a new animal model of fulminant liver failure. *J Lab Clin Med*  
40  
41 2003; **141**:272-278.  
42  
43
- 44 24. SAN-MIGUEL B, ÁLVAREZ M, CULEBRAS JM et al. N-acetyl-cysteine protects liver from  
45  
46 apoptotic death in an animal model of fulminant hepatic failure. *Apoptosis* 2006; **11**:1945-  
47  
48 1957.  
49  
50
- 51 25. TUÑÓN MJ, SAN-MIGUEL B, CRESPO I et al. Melatonin attenuates apoptotic liver damage  
52  
53 in fulminant hepatic failure induced by the rabbit hemorrhagic disease virus. *J Pineal Res*  
54  
55 2011; **50**:38-45.  
56  
57  
58  
59  
60



- 1  
2  
3 26. CRESPO I, SAN-MIGUEL B, LALIENA A et al. Melatonin prevents the decreased activity of  
4 antioxidant enzymes and activates nuclear erythroid 2-related factor 2 signaling in an animal  
5 model of fulminant hepatic failure of viral origin. *J Pineal Res* 2010; **49**:193-200.  
6  
7  
8  
9  
10 27. SAN-MIGUEL B, CRESPO I, VALLEJO D et al. Melatonin modulates the autophagic response  
11 in acute liver failure induced by the rabbit hemorrhagic disease virus. *J Pineal Res* 2014;  
12 **54**:313-321.  
13  
14  
15  
16  
17 28. MANCHESTER LC, COTO-MONTES A, BOGA JA et al. Melatonin: an ancient molecule that  
18 makes oxygen metabolically tolerable. *J Pineal Res* 2015; **57**:403-419.  
19  
20  
21  
22 29. CHO SY, LEE HJ, JEONG SJ et al. Sphingosine kinase 1 pathway is involved in melatonin-  
23 induced HIF-1alpha inactivation in hypoxic PC-3 prostate cancer cells. *J Pineal Res* 2011;  
24 **51**:87-93.  
25  
26  
27  
28  
29 30. TUÑÓN MJ, SAN-MIGUEL B, CRESPO I et al. Melatonin treatment reduces endoplasmic  
30 reticulum stress and modulates the unfolded protein response in rabbits with lethal fulminant  
31 hepatitis of viral origin. *J Pineal Res* 2013; **55**:221-228.  
32  
33  
34  
35  
36 31. MACAYKA M, HARIKUMAR KB, MILSTIEN H et al. Sphingosine-1-phosphate signaling  
37 and its role in disease. *Trends Cell Biol* 2012; **22**:50-60.  
38  
39  
40  
41 32. TUÑÓN MJ, SAN-MIGUEL B, CRESPO I et al. Cardiotrophin-1 promotes a high survival rate  
42 in rabbits with lethal fulminant hepatitis of viral origin. *J Virol* 2011; **85**:13124-13132.  
43  
44  
45  
46 33. TUÑÓN MJ, ÁLVAREZ M, CULEBRAS JM et al. An overview of animal models for  
47 investigating the pathogenesis and therapeutic strategies in acute hepatic failure. *World J*  
48 *Gastroenterol* 2009; **15**:3086-3098.  
49  
50  
51  
52  
53 34. LALIENA A, SAN-MIGUEL B, CRESPO, I et al. Melatonin attenuates inflammation and  
54 promotes regeneration in rabbits with fulminant hepatitis of viral origin. *J Pineal Res* 2012;  
55 **53**:270-278.  
56  
57  
58  
59  
60

- 1  
2  
3 35. ZHANG T, YAN T, DUT et al. Apigenin attenuates heart injury in lipopolysaccharide-induced  
4  
5  
6  
7  
8  
9  
10  
11 36. LAI WQ, GOH HH, BAO Z et al. The role of sphingosine kinase in a murine model of allergic  
12  
13  
14  
15 37. CHOI JW, GARDELL SE, HERR DR et al. FTY720 (fingolimod) efficacy in an animal model  
16  
17  
18  
19  
20  
21  
22 38. VENEROSO C, TUÑÓN MJ, GONZÁLEZ-GALLEGO J et al. Melatonin reduces cardiac  
23  
24  
25  
26  
27 39. ALVAREZ SE, HARIKUMAR KB, HAIT NC et al. Sphingosine-1-phosphate is a missing  
28  
29  
30  
31  
32 40. WANG X, ZHANG DM, GU TT et al. Morin reduces hepatic inflammation-associated lipid  
33  
34  
35  
36  
37  
38  
39 41. KANG JS, YOON YD, HAN MH et al. Glabridin suppresses intercellular adhesion molecule-1  
40  
41  
42  
43  
44  
45  
46  
47  
48  
49  
50  
51 42. HUANG K, LIU W, LAN T et al. Berberine reduces fibronectin expression by suppressing the  
52  
53  
54  
55  
56  
57  
58  
59  
60

- 1  
2  
3 43. YANG H, HREGGVIDSDOTTIR HS, PALMBLAD K et al. A critical cysteine is required for  
4  
5 HMGB1 binding to Toll-like receptor 4 and activation of macrophage cytokine release. Proc  
6  
7 Natl Acad Sci USA 2010; **107**:11942-11947.  
8  
9
- 10 44. PCHEJETSKI D, NUNES J, COUGHAN H et al. The involvement of sphingosine kinase 1 in  
11  
12 LPS-induced Toll-like receptor 4-mediated accumulation of HIF-1 $\alpha$  protein, activation of  
13  
14 ASK1 and production of the proinflammatory cytokine IL-6. Immunol Cell Biol 2011;  
15  
16 **89**:268-274.  
17  
18
- 19 45. PUNEET P, YAP CT, LAM Y et al. SphK1 regulates proinflammatory responses associated  
20  
21 with endotoxin and polymicrobial sepsis. Science 2010; **328**:1290-1294.  
22  
23
- 24 46. CARR JM, MAHALINGAM S, BONDER CS et al. Sphingosine kinase 1 in viral infections.  
25  
26 Rev Med Virol 2012; **23**:73-84.  
27  
28
- 29 47. VIJAYAN M, SEO YJ, PRITZI CJ et al. Sphingosine kinase 1 regulates measles virus  
30  
31 replication. Virology 2014; **450-451**:55-63.  
32  
33
- 34 48. SILVESTEI M, ROSSI GA. Melatonin: its possible role in the management of viral infections.  
35  
36 A brief review. Ital J Pediat 2013; **39**:61.  
37  
38
- 39 49. TAN DX, KORKMAZ A, REITER R et al. Ebola virus disease: potential use of melatonin as a  
40  
41 treatment. J Pineal Res 2014; **57**:381-384.  
42  
43  
44  
45  
46  
47  
48  
49  
50  
51  
52  
53  
54  
55  
56  
57  
58  
59  
60

### Figure legends

*Fig. 1.* Liver expression of SphK1 in RHDV-infected and melatonin-treated rabbits. (A): Photomicrographs of sections of liver samples taken from (a) Control; (b) Control + Mel; (c) RHDV 18 hr; (d) RHDV + Mel 18 hr; (e) RHDV 24 hr; (f) RHDV + Mel 24 hr; (g) RHDV 30 hr; (h) RHDV + Mel 30 hr; (i) RHDV 36 hr; (j) RHDV + Mel 36 hr. Paraffin-embedded sections were stained with SphK1 antibody. Original magnification: 200x. (B): Image analysis of the area of SphK1 staining. Image analysis was performed using the ImageJ software v3.91. (C): Levels of SphK1 mRNA analyzed by real-time PCR assay and normalized against  $\beta$ -Actin. (D): Western blot of SphK1. Proteins from liver extracts were separated by sodium dodecyl sulfate polyacrylamide gel electrophoresis, followed by immunoblotting. Equal loading of proteins is illustrated by  $\beta$ -Actin bands. Values are expressed as means S.E.M (n=6). <sup>a</sup>  $p < 0.05$ , compared with Control. <sup>b</sup>  $p < 0.05$ , compared with RHDV same period.

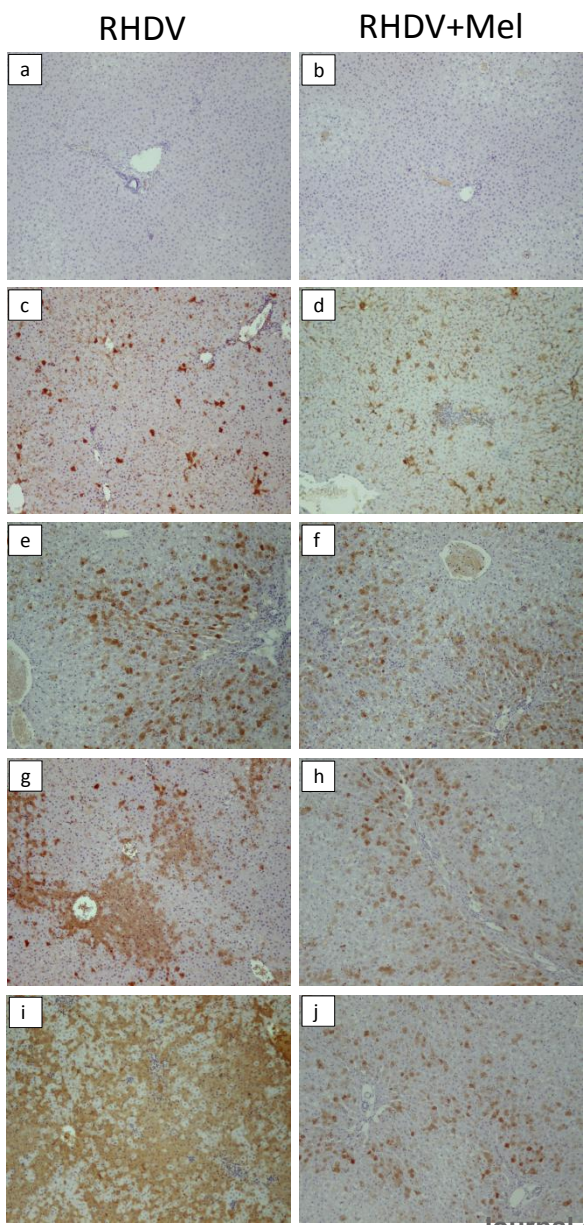
*Fig. 2.* Liver expression of S1PR1 in RHDV-infected and melatonin-treated rabbits. (A): Photomicrographs of sections of liver samples taken from (a) Control; (b) Control + Mel; (c) RHDV 18 hr; (d) RHDV + Mel 18 hr; (e) RHDV 24 hr; (f) RHDV + Mel 24 hr; (g) RHDV 30 hr; (h) RHDV + Mel 30 hr; (i) RHDV 36 hr; (j) RHDV + Mel 36 hr. Paraffin-embedded sections were stained with S1PR1 antibody. Original magnification: 200x. (B): Image analysis of the area of S1PR1 staining. Image analysis was performed using the ImageJ software v3.91. (C): Western blot of S1PR1. Proteins from liver extracts were separated by sodium dodecyl sulfate polyacrylamide gel electrophoresis, followed by immunoblotting. Equal loading of proteins is illustrated by  $\beta$ -Actin bands. (D): Level of S1P in rabbits liver homogenates analyzed by ELISA. Values are expressed as

1  
2  
3 means S.E.M (n=6). <sup>a</sup> p < 0.05, compared with Control. <sup>b</sup> p < 0.05, compared with RHDV same  
4  
5  
6 period.  
7  
8  
9

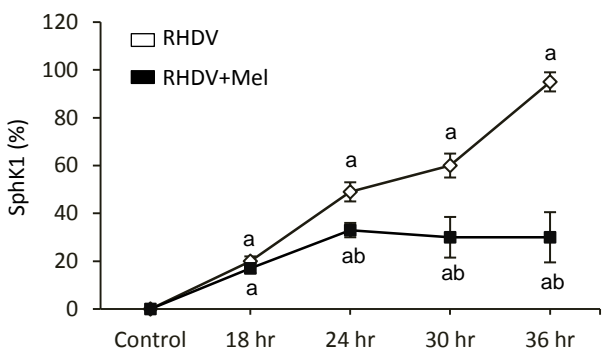
10  
11 *Fig. 3.* Liver expression of TNF- $\alpha$ , IL-6, TLR4, p50, p65, phospho-I $\kappa$ B $\alpha$  and I $\kappa$ B $\alpha$  in RHDV-  
12  
13 infected and melatonin-treated rabbits. Protein from liver extracts was separated by sodium dodecyl  
14  
15 sulfate-polyacrylamide gel electrophoresis, followed by immunoblotting. Equal loading of proteins  
16  
17 is illustrated by  $\beta$ -Actin bands. Left upper panel shows representative Western-blot photographs.  
18  
19 Histograms represent the result of densitometric quantification. Values are expressed as means  
20  
21 S.E.M (n=6). <sup>a</sup> p < 0.05, compared with Control. <sup>b</sup> p < 0.05, compared with RHDV same period.  
22  
23  
24  
25  
26

27  
28 *Fig. 4.* Liver expression of the RHDV capsid protein VP60 in RHDV-infected and melatonin-  
29  
30 treated rabbits. (A): Photomicrographs of sections of liver samples taken from (a) Control, (b)  
31  
32 Control + Mel (c) RHDV 18 hr; (d) RHDV + Mel 18 hr; (e) RHDV 24 hr; (f) RHDV + Mel 24 hr;  
33  
34 (g) RHDV 30 hr; (h) RHDV + Mel 30 hr; (i) RHDV 36 hr. (j) RHDV + Mel 36 hr. Paraffin-  
35  
36 embedded sections were stained with VP60 antibody. Original magnification: 200x. (B): Image  
37  
38 analysis of the area of VP60 staining. Image analysis was performed using the ImageJ software  
39  
40 v3.91. Values are expressed as means S.E.M (n=6). <sup>a</sup> p < 0.05, compared with Control. <sup>b</sup> p < 0.05,  
41  
42 compared with RHDV same period.  
43  
44  
45  
46  
47  
48  
49  
50  
51  
52  
53  
54  
55  
56  
57  
58  
59  
60

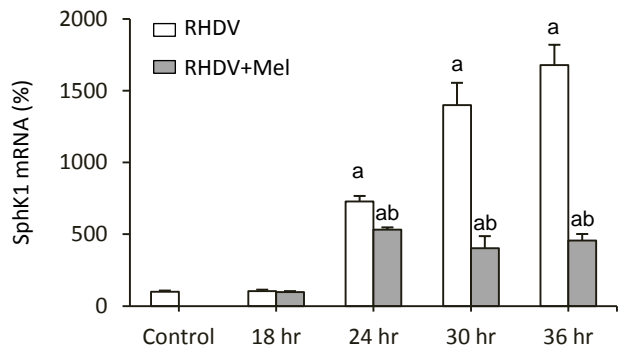
**A**



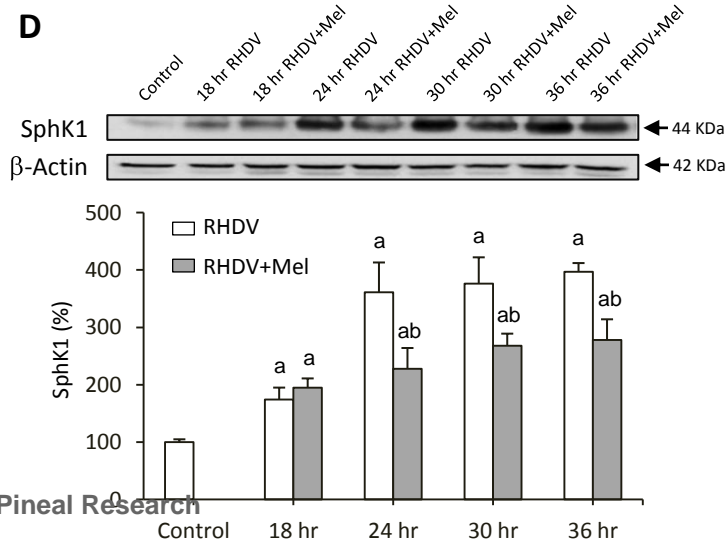
**B**



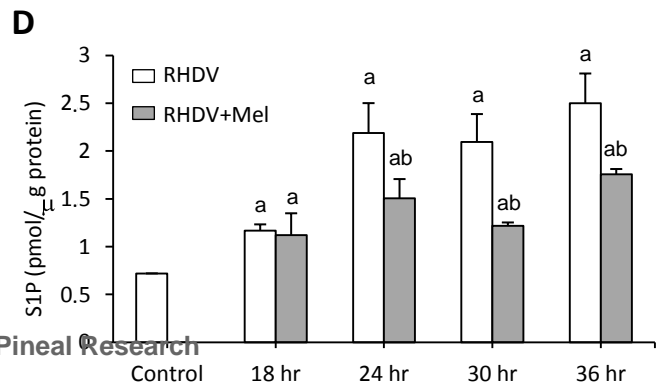
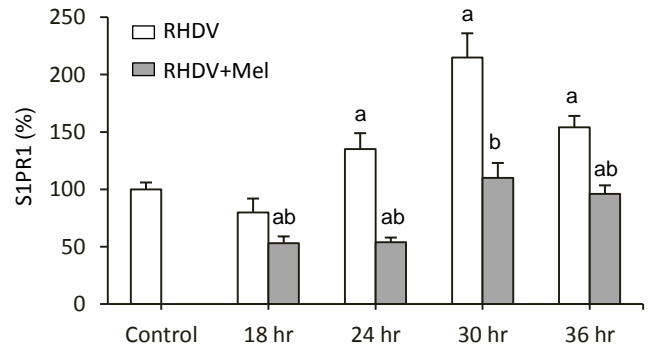
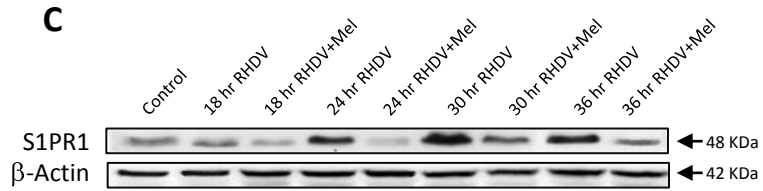
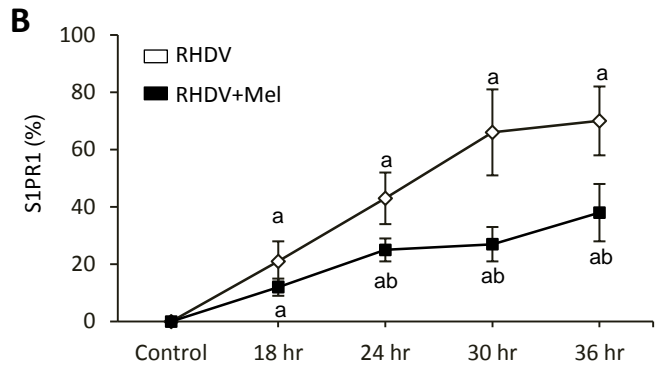
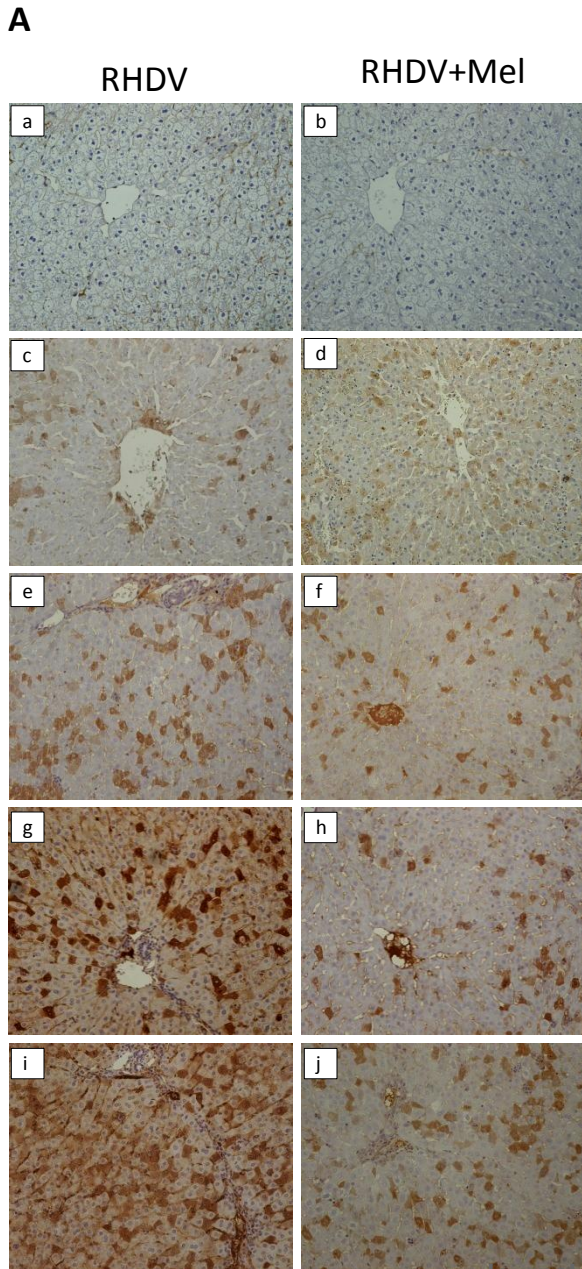
**C**

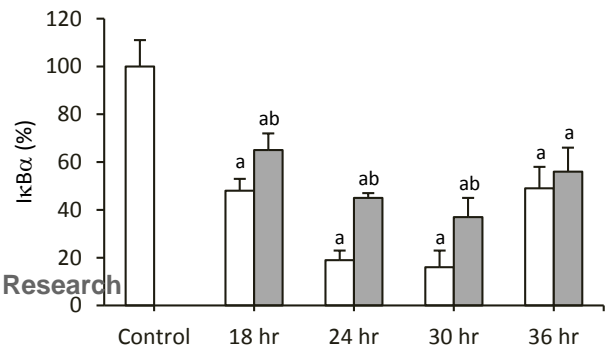
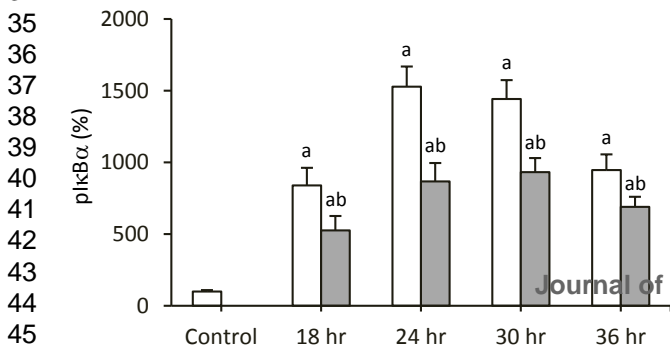
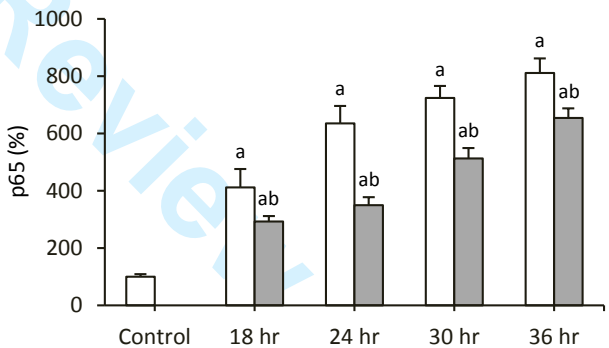
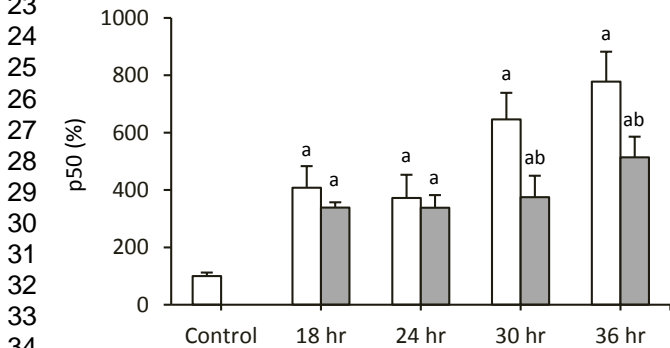
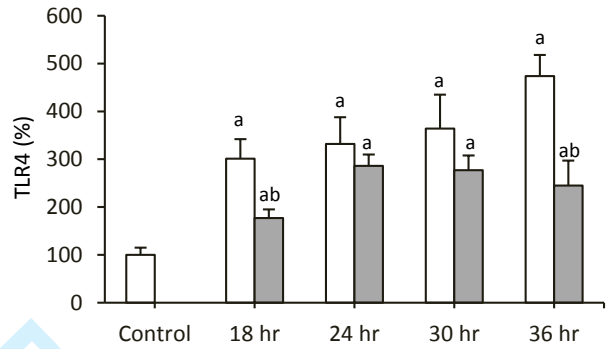
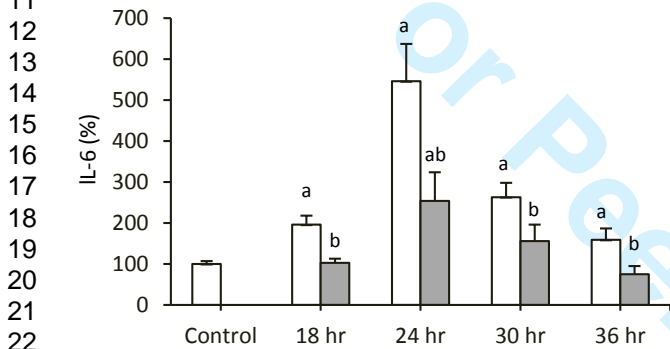
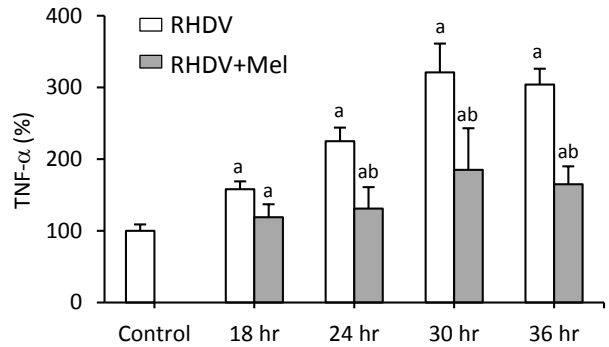
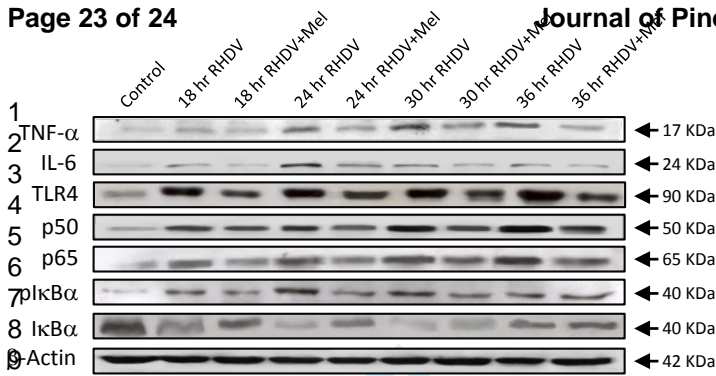


**D**



1  
2  
3  
4  
5  
6  
7  
8  
9  
10  
11  
12  
13  
14  
15  
16  
17  
18  
19  
20  
21  
22  
23  
24  
25  
26  
27  
28  
29  
30  
31  
32  
33  
34  
35  
36  
37  
38  
39  
40  
41  
42  
43  
44

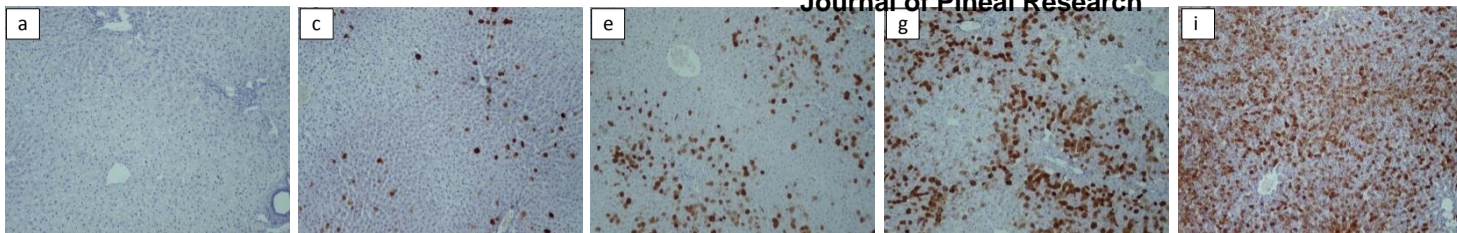




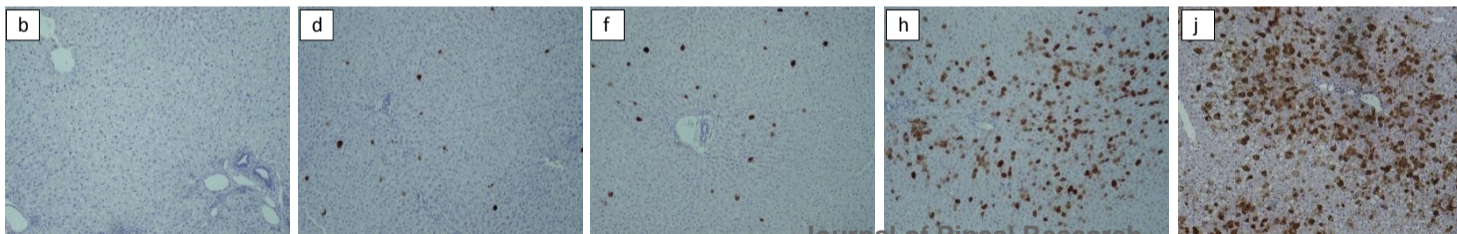


**A**

RHDV



RHDV+Mel

**B**