

EDITOR'S CHOICE

Sustained coevolution of phage Lambda and *Escherichia coli* involves inner- as well as outer-membrane defences and counter-defences

Alita R. Burmeister^{1,2,*}, †, Rachel M. Sullivan^{1,2‡}, Jenna Gallie^{3,4,5§} and Richard E. Lenski^{1,2}

Abstract

Bacteria often evolve resistance to phage through the loss or modification of cell surface receptors. In *Escherichia coli* and phage λ , such resistance can catalyze a coevolutionary arms race focused on host and phage structures that interact at the outer membrane. Here, we analyse another facet of this arms race involving interactions at the inner membrane, whereby *E. coli* evolves mutations in mannose permease-encoding genes *manY* and *manZ* that impair λ 's ability to eject its DNA into the cytoplasm. We show that these *man* mutants arose concurrently with the arms race at the outer membrane. We tested the hypothesis that λ evolved an additional counter-defence that allowed them to infect bacteria with deleted *man* genes. The deletions severely impaired the ancestral λ , but some evolved phage grew well on the deletion mutants, indicating that they regained infectivity by evolving the ability to infect hosts independently of the mannose permease. This coevolutionary arms race fulfils the model of an inverse gene-for-gene infection network. Taken together, the interactions at both the outer and inner membranes reveal that coevolutionary arms races can be richer and more complex than is often appreciated.

INTRODUCTION

An issue of longstanding interest is whether the coevolution of bacteria and virulent (lytic) phages involves endless rounds of bacterial defences and phage counter-defences. Based on experiments in chemostats, Lenski and Levin [1] suggested that bacteria typically had the upper hand, as *Escherichia coli* often eventually evolved resistance by deleting or inactivating the phage's specific receptor, which the phage could not readily overcome. This resistance did not imply the extinction of the phage, however, because it often reduced the bacteria's competitiveness for resources. Instead, the typical outcome was coexistence of resistant and sensitive bacteria, with the latter more efficient at exploiting resources and thus able to sustain the phage's persistence [2, 3]. A study of cyanobacteria and their phages in the marine environment also supported this pattern [4].

On the other hand, Lenski and Levin also pointed out that bacteria would lose the upper hand if the phage targeted a receptor that was essential for the bacteria to survive in their current environment. They cited then-recent work by Williams Smith and Huggins [5, 6], who showed that they could successfully treat mice with otherwise lethal bacterial infections using a phage that specifically targeted a receptor required for the bacteria to colonize the mice. As the problem of bacterial resistance to antibiotics has grown, similar strategies are now being tested in which phage that specifically target drug efflux pumps are deployed as therapeutic agents [7–9]. In the meantime, yet other forms of bacteria–phage coevolution have been discovered, including CRISPR systems in bacteria and countermeasures to avoid these defences in phage [10–13].

Received 29 April 2021; Accepted 04 May 2021; Published 25 May 2021

Author affiliations: ¹Department of Microbiology and Molecular Genetics, Michigan State University, East Lansing, MI, USA; ²BEACON Center for the Study of Evolution in Action, Michigan State University, East Lansing, MI, USA; ³Department of Biology, University of Washington, Seattle, WA, USA; ⁴Department of Environmental Microbiology, Eawag, Dübendorf, Switzerland; ⁵Department of Environmental Systems Science, ETH Zürich, Zürich, Switzerland.

*Correspondence: Alita R. Burmeister, alita.burmeister@yale.edu

Abbreviations: GFG, gene-for-gene; IGFG, inverse gene-for-gene.

†Present address: Department of Ecology and Evolutionary Biology, Yale University, New Haven, CT, USA

‡Present address: Waisman Center, University of Wisconsin, Madison, WI, USA

§Present address: Department of Evolutionary Theory, Max Planck Institute for Evolutionary Biology, 24306 Plön, Germany.

Supplementary material is available with the online version of this article.

001063 © 2021 The Authors



This is an open-access article distributed under the terms of the Creative Commons Attribution License.

Another part of the argument that bacteria had the upper hand in the coevolutionary arms race depended on the idea that, while phages could often counter minor mutations in receptors, it was much more difficult for them to evolve the ability to use another receptor if the bacteria simply stopped producing the usual receptor [1]. However, more recent work has shown that some host–phage pairs can undergo longer coevolutionary cycles involving defences and counter-defences at the outer membrane [14–16], and some phages can evolve to use new receptors even on a short time scale [17]. This coevolutionary dynamic – in which hosts lose structures exploited by specific pathogens, and those pathogens evolve to exploit alternative structures – is called inverse gene-for-gene (IGFG) coevolution [18–21]. This IGFG framework is useful for representing changes in coevolving communities of bacteria and phage (Fig. 1). For example, if phage cannot evolve to exploit new features after bacteria have evolved resistance, then phage populations may be evolutionarily static [22, 23]. Conversely, if phage exploit essential features of the bacteria that cannot be eliminated, then the host's evolution is constrained and phage infectivity may remain elevated [6, 8]. Our study builds on one such example of IGFG coevolution, in which it was discovered that populations of a virulent strain of phage λ often evolved the ability to use another outer-membrane receptor after coevolving *E. coli* reduced their expression of the receptor that the phage had initially exploited [17, 24].

Phage λ requires a two-step infection process to cross the outer and inner bacterial membranes (Fig. 1). The λ tail initiates infection at the outer membrane of the cell, where its J protein fibres adsorb to the bacterial protein LamB [25, 26]. The tail proteins V and H allow λ to enter the periplasm and thereby interact with the mannose permease proteins (encoded by *manY* and *manZ*) in the inner membrane, which λ uses to eject its genome into the cytoplasm [27–30]. Resistance to λ can occur by blocking λ 's entry at either the outer or inner membrane, with resistance mutations typically mapping to *lamB*, *lamB*'s positive regulator *malT* [25, 26], or the mannose permease genes [27, 28, 30] (Fig. 1). It has been shown that sensitive *E. coli* and lytic λ can coexist, along with resistant *E. coli* mutants, in both continuous [31] and batch culture regimes [17]. Previous analysis of this coevolving system has revealed IGFG dynamics focused on outer-membrane defences and counter-defences. That is, *E. coli* often first evolves *malT* mutations that reduce LamB expression, resulting in increased resistance to λ [17, 31, 32], and λ then regains infectivity through mutations in the *J* gene that increase its adsorption rate and fitness [31, 33]. In some, but not all, experiments, specific sets of *J* mutations allow the novel exploitation of a second outer-membrane protein, OmpF, catalyzing further evolution including mutations in the *ompF* gene [17, 34].

Despite extensive knowledge about the evolution of the initial (adsorption) and final (lysis) steps of λ infection of *E. coli*, much less is known about the evolution of the genetic networks during other stages of infection, including λ 's passage through the periplasmic space and the ejection

Impact Statement

Laboratory studies of coevolution help us understand how host defences and pathogen counter-defences change over time, which is often essential for predicting the future dynamics of host–pathogen interactions. One particular model, termed inverse gene-for-gene coevolution, predicts that coevolution proceeds through alternating steps, whereby hosts lose the features exploited by pathogens, and pathogens evolve to exploit alternative features. Using a classic model system in molecular biology, we describe the nature and timing of a previously overlooked step in the coevolution of *E. coli* and bacteriophage lambda. Our work demonstrates that this mode of coevolution can profoundly reshape the interactions between bacteria and phage.

of its DNA into the host cytoplasm. Meyer *et al.* [17] found that *E. coli* coevolving with λ often acquired mutations that affected their ability to grow on mannose, which presumably were favoured because they disrupt entry of the phage genome via the mannose permease. In this study, we examine how this coevolutionary arms race – previously focused on the cell's outer membrane – also set off an arms race involving the host's inner membrane, including the mechanism λ uses to eject its DNA through that membrane and into the bacteria's cytoplasm.

METHODS

Bacteria and phage strains

Meyer *et al.* [17] founded 96 replicate cultures with *E. coli* B strain REL606 and lytic phage λ c126, serially passaged the communities for 20 days, and froze mixed-community samples daily. Some of the phage populations evolved the ability to use the outer-membrane protein OmpF as a receptor, some of the bacterial populations evolved mutations that affected mannose metabolism and some communities changed in both respects. We obtained phage isolates from two of the populations (Table 1, Pop-A and Pop-B) that changed in both of these key respects; in each case, however, the isolates were taken 4 days before the phage had evolved the new ability to use the OmpF receptor (Table 1, Supplementary Results and Discussion). *E. coli* K12 strains BW25113, JW1807 and JW1808 are from the Keio collection [35]. REL606 Δ *manZ* was constructed using a two-step allelic exchange (Supplementary Methods, Tables S1 and S2).

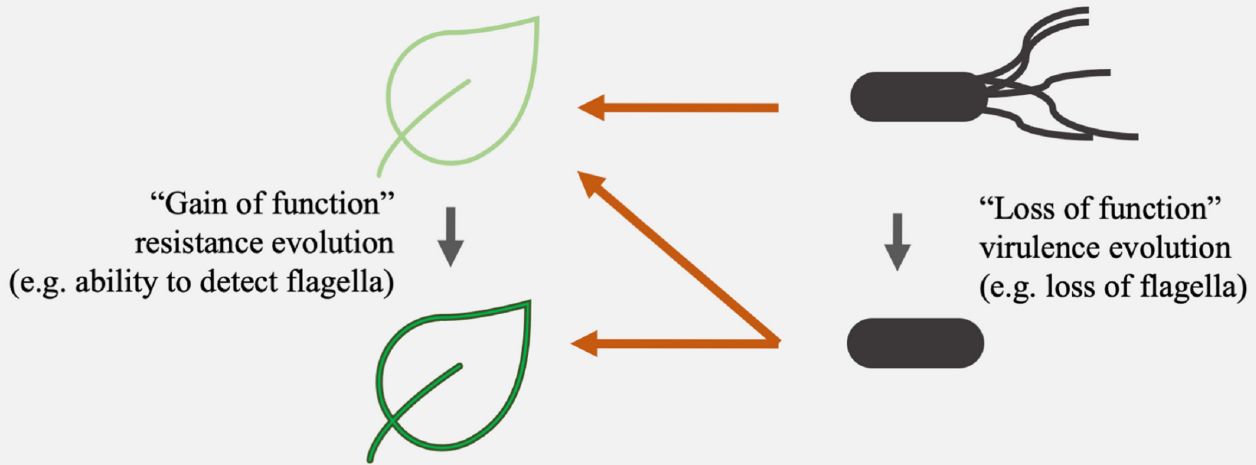
Phage growth assays

We measured the population growth of the ancestral and evolved phages under the same culture conditions as those in which the communities evolved (Supplementary Methods) [17]. The initial densities were $\sim 9 \times 10^6$ cells ml⁻¹ and $\sim 1 \times 10^4$ phage ml⁻¹. We calculated the phage's net population growth as the ratio of its final density after 1 day to its initial density; we show the resulting net growth on a log₁₀-transformed scale. We enumerated the

(a)

Gene-for-gene coevolution:

Host evolves by *gaining* resistance genes, and pathogen evolves by losing genes that elicit host defence.



(b)

Inverse gene-for-gene coevolution:

Host evolves resistance by *losing* structures, and pathogen evolves to *exploit other* structures.

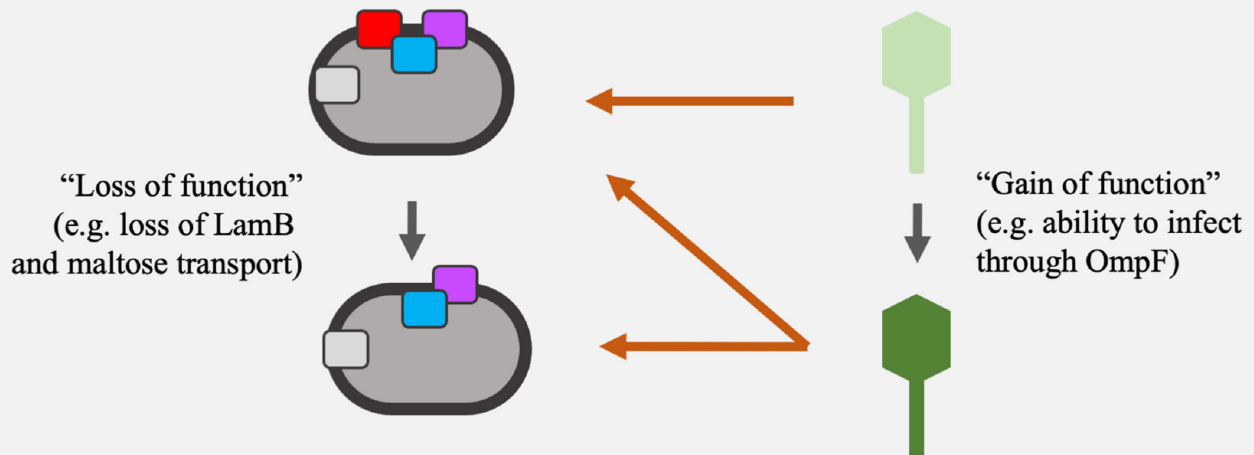


Fig. 1. Genetic interaction networks during gene-for-gene (GFG) coevolution (a) and inverse gene-for-gene (IGFG) coevolution (b). In both scenarios, host alleles affect selection on pathogen phenotypes, and pathogen alleles influence selection on host phenotypes. However, the two models have different implications for understanding historical coevolution and predicting future changes. During GFG coevolution, hosts evolve resistance by gaining resistance genes, and pathogens evolve by losing genes that elicit host defences. GFG coevolution is common among plants and their bacterial pathogens; it may also occur in bacteria–phage interactions that involve restriction–modification and CRISPR defences. During IGFG coevolution, pathogen infectivity requires the exploitation of specific host features, and resistance involves eliminating the exploited features. Unlike in the GFG model, host defences in the IGFG model do not require pathogen recognition, and the pathogen’s evasion of host resistance does not require the loss of a defence elicitor.

Table 1. *E. coli* and phage λ strains used in this study

| Strain | Description | Relevant characteristics |
|-------------------------|--|---|
| Bacteria Clones: | | |
| REL606 | <i>E. coli</i> B ancestor of coevolution experiment | <i>malT</i> ⁺ , <i>ompF</i> ⁺ , <i>manY</i> ⁺ , <i>manZ</i> ⁺ |
| REL606 $\Delta manZ$ | <i>manZ</i> deletion derived from REL606* | $\Delta manZ$ |
| BW25113 | <i>E. coli</i> K12 parental strain of Keio collection | <i>malT</i> ⁺ , <i>ompF</i> ⁺ , <i>manY</i> ⁺ , <i>manZ</i> ⁺ |
| JW1807 | <i>manY</i> deletion in Keio collection | $\Delta manY$ |
| JW1808 | <i>manZ</i> deletion in Keio collection | $\Delta manZ$ |
| DH5 α | Strain used for λ plaque-based enumeration | <i>malT</i> ⁺ , <i>ompF</i> ⁺ , <i>manY</i> ⁺ , <i>manZ</i> ⁺ |
| Phage Clones: | | |
| c126 | Lytic λ ancestor of both phage populations | Requires <i>E. coli</i> LamB |
| λ -A | Evolved λ isolate from Pop-A† on day 8 (4 days before the population evolved to use OmpF) | Requires <i>E. coli</i> LamB |
| λ -B | Evolved λ isolate from Pop-B† on day 11 (4 days before the population evolved to use OmpF) | Requires <i>E. coli</i> LamB |

*This strain also has three mutations that have no known relevance to interactions with phage λ (Supplementary Results and Discussion). For construction methods, see Supplementary Methods .

†For simplicity, we have designated the source populations Pop-A and Pop-B. These correspond to population numbers D9 and G9 in the original experiment described by Meyer *et al.* [17].

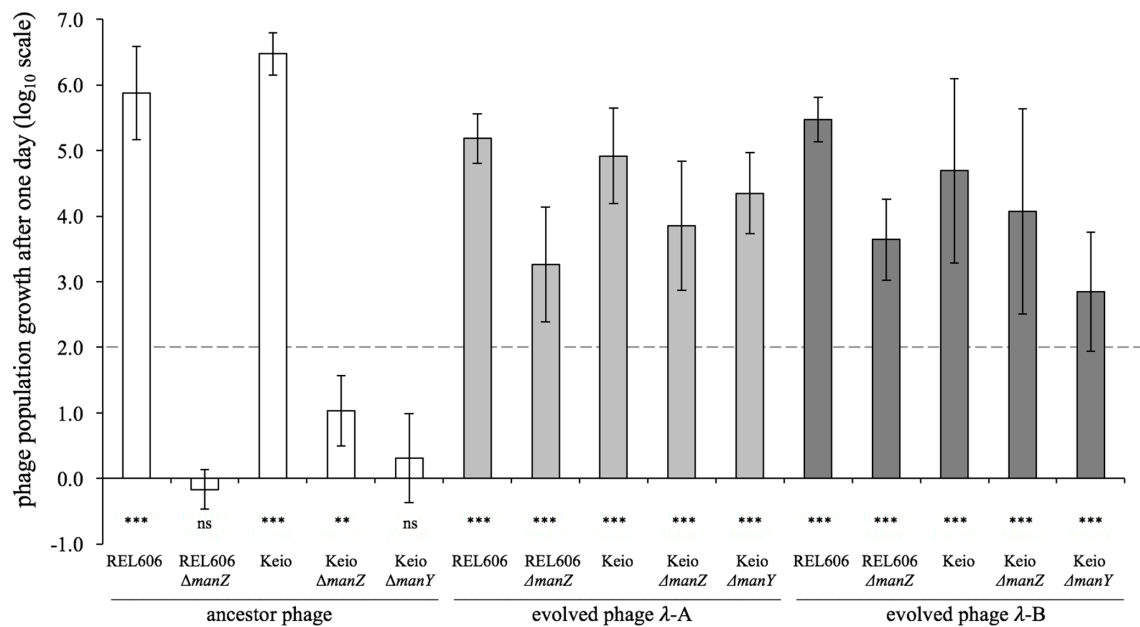


Fig. 2. Net population growth of phage λ on wild-type, $\Delta manY$ and $\Delta manZ$ bacteria. Whether the phage could grow was assessed by performing one-tailed *t*-tests on the \log_{10} -transformed ratio of phage population densities at the start and end of a 1 day cycle, with the null hypothesis of zero growth (***, $P < 0.001$; **, $0.001 < P < 0.01$; ns, not significant, $P > 0.05$). Each test was based on five or six replicate assays. Phage isolates λ -A and λ -B evolved in a batch culture regime with 100-fold dilution each day, and so 100-fold growth was required for their persistence; this break-even level is indicated by the dashed line.

initial and final phage populations using dilution plating and soft agar overlays (Supplementary Methods). We performed five or six replicate assays for each phage–host combination shown in Fig. 2.

Frequency of mutants with altered mannose phenotypes

We estimated the frequency of bacteria with mutations affecting

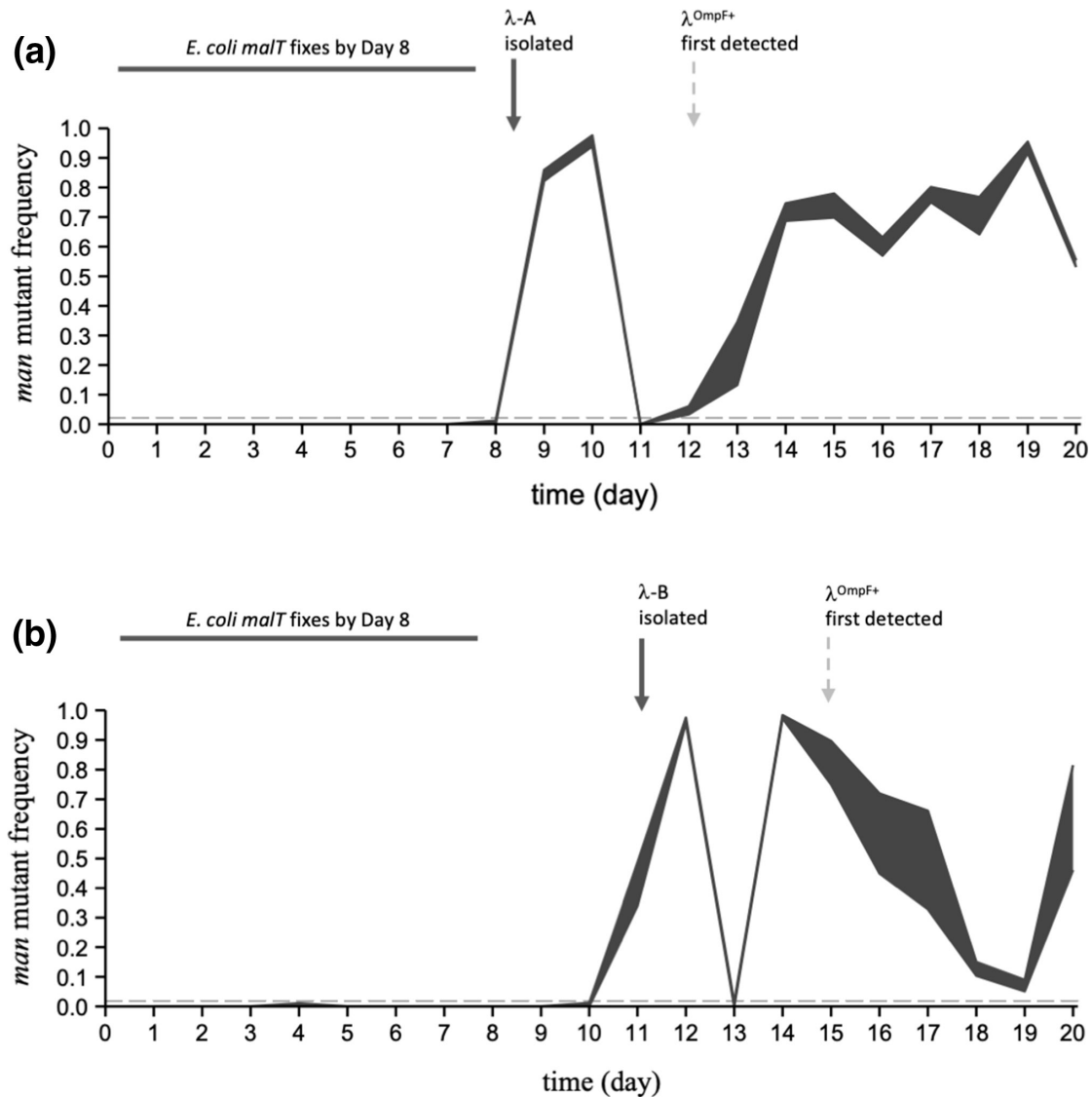


Fig. 3. Temporal dynamics of *man* mutants in *E. coli* populations Pop-A (a) and Pop-B (b). Mutant *malT* alleles had already reached fixation in both populations by day 8 [17]. Bacteria with *man* mutations, which confer resistance to the ancestral phage λ , rose to high frequencies and then declined sharply in abundance in both populations after day 8, but before λ had evolved to use the alternative receptor OmpF (timing indicated by vertical dashed arrows). These data imply that the *man* mutations evolved on *malT* mutant backgrounds, and that λ evolved independence of the mannose permease – causing the precipitous decline in the frequency of *man* mutants – before it evolved the ability to use OmpF. The shaded regions indicate the maximum and minimum frequencies of the *man* mutants based on analysing two samples per population each day (mean $n=90$ colonies tested per sample, minimum 29 colonies). The horizontal grey dashed lines show the approximate limit of detection of the *man* mutants [0.019 for (a), 0.022 for (b)].

the mannose permease by plating from the time series of frozen samples taken from populations Pop-A and Pop-B on tetrazolium mannose agar, as done previously [17]. Mutants with reduced ability to metabolize mannose form deeply pigmented colonies that can be readily distinguished from those of the ancestral strain REL606, which forms light pink colonies on that medium.

The data are available as Supplementary Datasets S1 (net population growth of phage λ on wild-type and knockout bacteria) and S2 (temporal dynamics of *man* mutants in *E. coli* populations).

RESULTS AND DISCUSSION

Our experiments focus on two independently coevolved communities of mixed *E. coli* and λ populations, designated Pop-A and Pop-B [17]. Both λ populations evolved from a common ancestral phage (strain cI26). From each evolved population, we isolated a single phage clone: λ -A from Pop-A and λ -B from Pop-B (Table 1). Each clone was isolated 4 days before its population evolved the ability to use the OmpF receptor; hence, the phage clones were isolated on different days of the coevolution experiment performed by Meyer *et al.* [17].

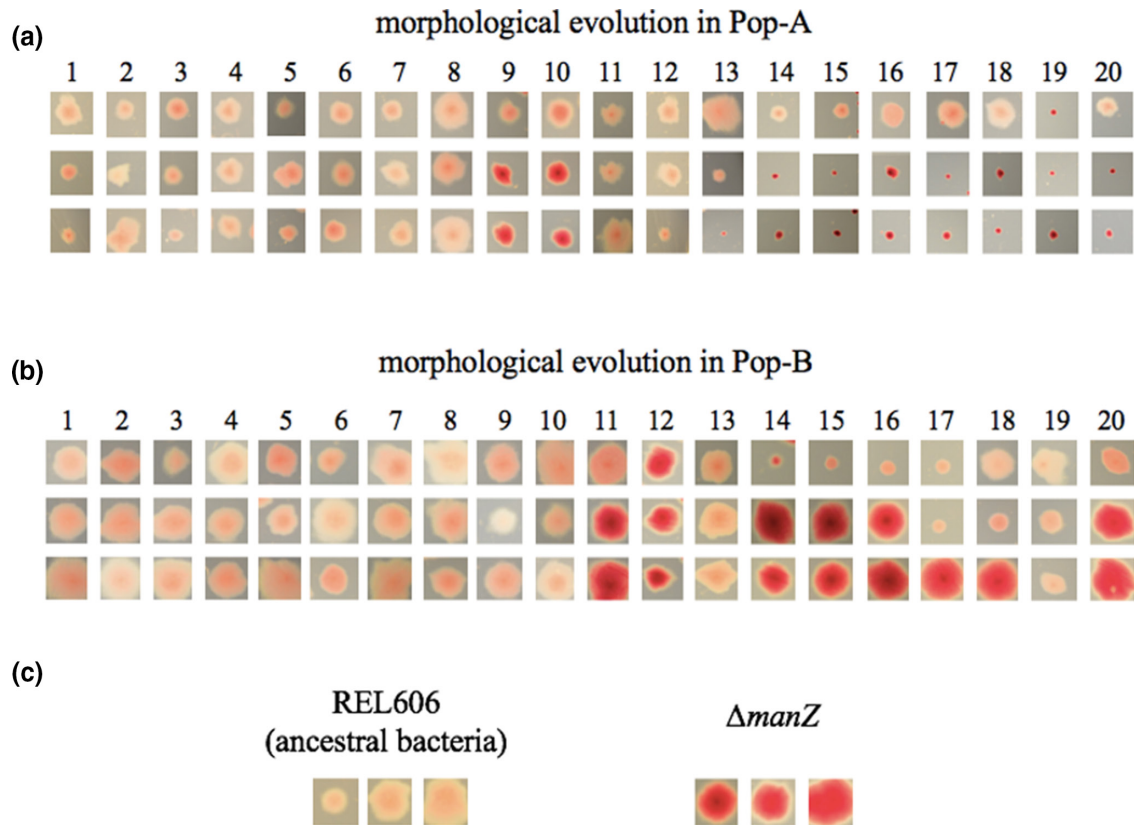


Fig. 4. Evolution of *man*-related colony morphology on tetrazolium mannose agar. *E. coli* mutants with reduced ability to metabolize mannose form more deeply pigmented colonies than the wild-type bacteria. Three representative colonies are shown for each sample from days 1–20 of two coevolution experiments. Representative colonies within a column are from the same agar plate and shown at the same magnification after incubation for 18–21 h. (a) Pop-A. (b) Pop-B. (c) Comparison of wild-type and $\Delta manZ$ bacteria in the same *E. coli* strain B genetic background.

To examine whether and how coevolution affected λ 's dependence on the ManY and ManZ proteins, we measured the population growth of the ancestral (cI26) and the two coevolved phage isolates (λ -A and λ -B) on bacterial strains with and without the *manY* and *manZ* genes (Table 1). Both the ancestral and evolved phage isolates grew well on bacterial strains with intact *manY* and *manZ* genes, including both the ancestral *E. coli* B strain, REL606, used in the coevolution experiment, and the K12 genetic background in which the Keio collection was made (Fig. 2, Table 1). Deletion of either the *manY* or *manZ* gene in either background severely reduced the ancestral phage's population growth. In two cases (REL606 $\Delta manZ$ and Keio $\Delta manY$), we saw no growth whatsoever in the ancestral phage (cI26) population after 24 h; in the other case (Keio $\Delta manZ$), the ancestral phage population increased ~10-fold, but that was 5 orders of magnitude less than the increase on the same background with both mannose permease genes present. In striking contrast, both evolved phage isolates showed substantial growth on all three bacterial strains that lacked either the *manY* or *manZ* gene (Fig. 2). These results thus indicate an inverse gene-for-gene coevolutionary interaction at the inner membrane. That is, the bacteria modified or lost the mannose permease, which the ancestral phage used to eject its genome

into the cytoplasm, and the phage countered by evolving independence of that function.

To determine when the mutant mannose permease mutants arose in the two *E. coli* populations studied here, we plated frozen samples from the coevolution experiments on tetrazolium mannose agar, on which *man* mutants form pigmented colonies distinguishable from the wild-type (Supplementary Results and Discussion) [36]. We are particularly interested in the timing of the appearance of the *man* mutants relative to two other steps in the coevolutionary arms race that were previously characterized: (i) the *malT* mutations that reduced the bacteria's expression of LamB and thus the adsorption of the ancestral phage [33]; and (ii) λ 's new ability to adsorb to OmpF as an alternative receptor [17]. Our phage growth data demonstrate that *manY* and *manZ* deletions confer substantial resistance even to the ancestral phage, which can use only the LamB surface receptor (Fig. 2). That result suggests the possibility that the *man* mutants could have arisen early in the coevolution experiments, perhaps alongside or even before the *malT* mutations that provided resistance at the outer membrane. However, time course data show that the *man* alleles consistently reached high frequencies (above the

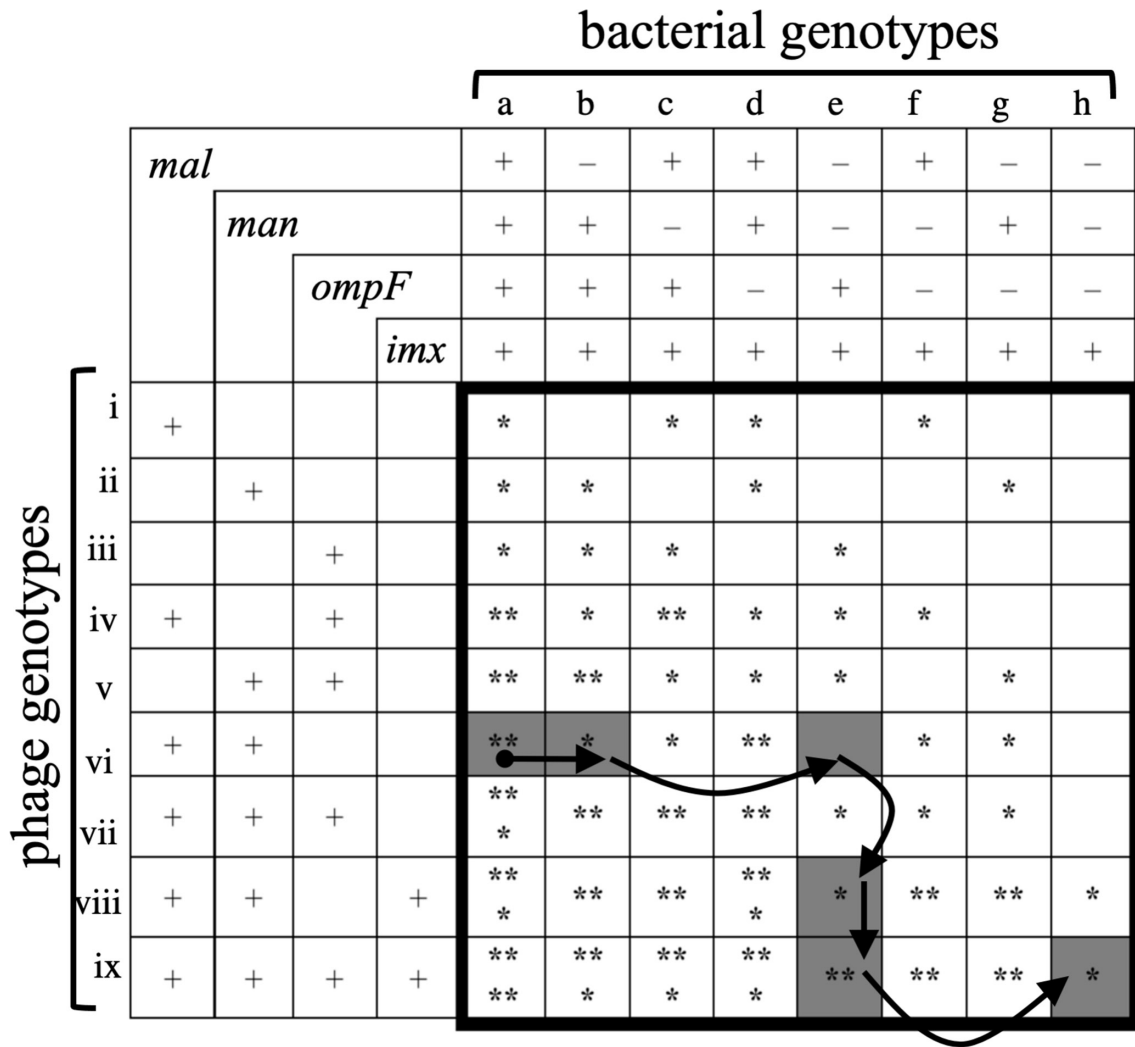


Fig. 5. An inverse gene-for-gene model showing the structure of the genetic network for coevolving *E. coli* and λ populations. Columns indicate bacterial genotypes with four exploitable features, and rows indicate λ genotypes that exploit those features: *mal*, maltose transport across the outer membrane; *man*, mannose transport across the inner membrane; *ompF*, glucose and electrolyte transport across the outer membrane; *imx*, a hypothetical inner membrane feature that is exploited by λ that evolved independence of the mannose permease. The '+' symbol indicates that either the bacteria have the feature or the phage exploit the feature. The '-' symbol indicates that the bacteria lack the feature, express it to a reduced degree, or otherwise modify it to minimize phage infection. Asterisks (*) indicate infectivity for each host-phage pair, with more asterisks indicating greater infectivity. Adaptive changes through the network can proceed by two types of move: *E. coli* resistance (to the right along rows) and increased λ infectivity (downward along columns). The coevolving communities were founded by host genotype a and phage genotype vi (shown by the black circle). The communities analysed in this study appear to have moved through the shaded nodes in five steps, as indicated by the arrows.

detection limits, shown as grey dashed lines in Fig. 3) only after the fixation of the *malT* mutations, which occurred by day 8 in both populations studied here (Figs. 3 and 4, Table S3) [17].

These temporal data also show that the *man* mutations had nearly fixed in both bacterial populations (frequencies >95% on day 10 in Pop-A and on day 12 in Pop-B), but then the mutants sharply declined the next day. This reversal suggests that these mutants were killed by phages that evolved independence of the mannose permease, and it is consistent with previous data showing that mutant *man* alleles rarely fixed in the bacterial

populations [17]. Meyer *et al.* (Fig. S2 in [17]) reported that the bacterial population densities remained high ($\sim 2 \times 10^9$ cells ml^{-1} , near the carrying capacity of the medium) throughout this period of the evolution experiment. Therefore, the mutant frequencies that we observed (Fig. 3) correspond to $\sim 4 \times 10^7$ cells ml^{-1} (about 2% of the total population, the limit of detection in that assay) to almost 2×10^9 cells ml^{-1} (the carrying capacity). With such large population sizes, any phage mutants that gained the ability to infect the *man* mutants would have access to a large number of hosts, and correspondingly, a large fitness benefit. The resulting growth of the *man*-independent phage population

would drive the frequency of *man* mutants down, especially if the *man*-independent phages preferentially infected and killed the *man* mutants relative to other cells that retained the wild-type permease. Fitness costs associated with loss of the mannose permease may also have contributed to the reversal, although the costs of the resistance mutations are small compared to their benefit in the presence of phage [36].

In host Pop-A, variation in colony morphology further suggested that different *man* alleles were present before and after the sudden decline in the frequency of *man* mutants on day 11 (Fig. 4, Supplementary Results and Discussion). The initial boom and bust of the mutant *man* alleles in both populations also occurred before the phage had evolved to use OmpF (Fig. 3, dashed arrows). Whether λ gained independence from the mannose permease by exploiting another inner-membrane protein, and whether *E. coli* did (or could) respond by eliminating such a structure, are interesting questions for future work.

Our results are broadly consistent with genetic and molecular biology studies of λ host range mutations. Scandella and Arber [30] isolated *E. coli* mutants that allowed phage adsorption to the cell envelope but interfered with ejection of the phage genome, thereby reducing infection success to a small fraction of that observed on wild-type cells. The responsible mutations were mapped to the mannose permease operon [27, 37], and λ mutants that could infect these mutant bacteria had mutations in phage genes *V* or *H* [38]. Mutations in *V* and *H* have also been observed in another population in this study system [39]. Williams et al. [37] found that, for *E. coli* strain K12, *manZ* is not strictly required for wild-type λ to eject its genome, and our results are in accord with that finding (Fig. 2, Keio background). However, our results suggest that λ cI26 does require *manZ* when infecting *E. coli* strain B, at least in the culture conditions that we used (Fig. 2, REL606 background). Alternatively, λ cI26 might occasionally infect and replicate in hosts without *manZ*, but at a rate that is offset by the decay or inactivation of free virus particles under these conditions [17, 33]. In any case, the net population growth of the ancestral phage on either the Δ *manY* or Δ *manZ* bacteria is insufficient to offset the 100-fold daily dilutions (Fig. 2, dashed line) that took place during the coevolution experiment [17].

Taken together, our results imply that *E. coli* and λ coevolved in an inverse gene-for-gene manner [18] (Fig. 1). This coevolution involved two infection steps – crossing first the outer and then the inner membrane – and at least three, and probably four, distinct host features (Figs 1, 5). *E. coli* evolved resistance to phage λ through the loss or alteration of maltose transport across the outer membrane (via mutations in *maltT*) and mannose transport across the inner membrane (via mutations in *manY* or *manZ*), while λ evolved to exploit other *E. coli* features, including another outer-membrane protein (OmpF) and, presumably, some as yet unidentified, alternative inner-membrane protein (shown as encoded by the hypothetical *imx* gene in Fig. 5). While our study addresses one particular bacteria–phage interaction in a

simple laboratory setting, it illustrates the extent to which the resulting coevolutionary arms races can be richer and more complex than is often appreciated.

There are many alternative coevolutionary paths through an inverse gene-for-gene network that has four features subject to host defences and parasite counter-defences (Fig. 5). This multiplicity of potential paths suggests that mutation and selection could drive replicate communities to different regions of the coevolutionary landscape, raising other interesting questions. How might different first-step resistance mutations affect the subsequent host range evolution of the phage and the further evolution of host resistance? To what extent can IGFG systems continuously evolve host defences and parasite counter-defences? What is the effect of such prolonged coevolution for community diversity? Do communities become increasingly divergent as the coevolving populations follow different paths through the network, or might they eventually converge on the same phenotypic states after a period of divergence? How important are evolutionary innovations in opening new paths, relative to pleiotropic tradeoffs that may close off certain paths? Future work should investigate these and other questions about the coevolution of bacteria and phage and the structure of their genetic interaction networks.

Funding information

This work was supported by the National Science Foundation Graduate Research Fellowship (DGE-1424871) to A. R. B., the BEACON Center for the Study of Evolution in Action (NSF Cooperative Agreement DBI-0939454), the John Hannah endowment from Michigan State University to R. E. L., a Marie Curie IIF Fellowship to J. G., and the Max Planck Society to J. G. The funders had no role in study design, data collection and interpretation, or the decision to submit the work for publication. Any opinions, findings, and conclusions or recommendations expressed in this paper are those of the authors and do not necessarily reflect the views of the funders.

Acknowledgements

We thank Neerja Hajela for assistance in the laboratory; Justin Meyer for advice on experimental methods, sharing samples from the coevolution experiments, and valuable discussions; and Rohan Maddamsetti, Caroline Turner and Rohan Maddamsetti, Caroline Turner, Mike Wiser, and Mike Blazanin.

Author contributions

A. R. B., R. M. S. and R. E. L. conceived the study. A. R. B., R. M. S. and J. G. performed the experiments. All authors analysed the data and wrote the manuscript.

Conflicts of interest

The authors declare that there are no conflicts of interest.

References

1. Lenski RE, Levin BR. Constraints on the coevolution of bacteria and virulent phage: a model, some experiments, and predictions for natural communities. *Am Nat* 1985;125:585–602.
2. Chao L, Levin BR, Stewart FM. A complex community in a simple habitat: an experimental study with bacteria and phage. *Ecology* 1977;58:369–378.
3. Levin BR, Stewart FM, Chao L. Resource-limited growth, competition, and predation: a model and experimental studies with bacteria and bacteriophage. *The American Naturalist* 1977;111:3–24.
4. Waterbury JB, Valois FW. Resistance to co-occurring phages enables marine *Synechococcus* communities to coexist with cyanophages abundant in seawater. *Appl Environ Microbiol* 1993;59:3393–3399.

5. Williams Smith H, Huggins MB. The association of the O18, K1 and H7 antigens and the ColV plasmid of a strain of *Escherichia coli* with its virulence and immunogenicity. *Microbiology* 1980;121:387–400.
6. Williams Smith H, Huggins MB. Successful treatment of experimental *Escherichia coli* infections in mice using phage: its general superiority over antibiotics. *J Gen Microbiol* 1982;128:307–318.
7. Burmeister AR, Fortier A, Roush C, Lessing AJ, Bender RG, et al. Pleiotropy complicates a trade-off between phage resistance and antibiotic resistance. *Proc Natl Acad Sci U S A* 2020;117:11207–11216.
8. Chan BK, Siström M, Wertz JE, Kortright KE, Narayan D, et al. Phage selection restores antibiotic sensitivity in MDR *Pseudomonas aeruginosa*. *Sci Rep* 2016;6:26717.
9. Kortright KE, Chan BK, Koff JL, Turner PE. Phage therapy: A renewed approach to combat antibiotic-resistant bacteria. *Cell Host Microbe* 2019;25:219–232.
10. Barrangou R, Fremaux C, Deveau H, Richards M, Boyaval P, et al. CRISPR provides acquired resistance against viruses in prokaryotes. *Science* 2007;315:1709.
11. Shmakov S, Smargon A, Scott D, Cox D, Pyzocha N, et al. Diversity and evolution of class 2 CRISPR–Cas systems. *Nat Rev Microbiol* 2017;15:169–182.
12. Westra ER, Levin BR. It is unclear how important CRISPR–Cas systems are for protecting natural populations of bacteria against infections by mobile genetic elements. *Proc Natl Acad Sci USA* 2020;117:27777–27785.
13. Pawluk A, Davidson AR, Maxwell KL. Anti-CRISPR: discovery, mechanism and function. *Nat Rev Microbiol* 2018;16:12.
14. Buckling A, Rainey PB. Antagonistic coevolution between a bacterium and a bacteriophage. *Proceedings of the Royal Society of London Series B. Proc Biol Sci* 2002;269:931–936.
15. Scanlan PD, Buckling A. Co-evolution with lytic phage selects for the mucoid phenotype of *Pseudomonas fluorescens* SBW25. *ISME J* 2012;6:1148–1158.
16. Scanlan PD, Hall AR, Lopez-Pascua LDC, Buckling A. Genetic basis of infectivity evolution in a bacteriophage. *Mol Ecol* 2011;20:981–989.
17. Meyer JR, Dobias DT, Weitz JS, Barrick JE, Quick RT, et al. Repeatability and contingency in the evolution of a key innovation in phage lambda. *Science* 2012;335:428–432.
18. Fenton A, Antonovics J, Brockhurst MA. Inverse-gene-for-gene infection genetics and coevolutionary dynamics. *Am Nat* 2009;174:E230–242.
19. Fenton A, Antonovics J, Brockhurst MA. Two-step infection processes can lead to coevolution between functionally independent infection and resistance pathways. *Evolution* 2012;66:2030–2041.
20. Sieber M, Robb M, Forde SE, Gudelj I. Dispersal network structure and infection mechanism shape diversity in a coevolutionary bacteria–phage system. *ISME J* 2014;8:504–514.
21. Agrawal A, Lively CM. Infection genetics: gene-for-gene versus matching-alleles models and all points in between. *Evol Ecol Res* 2002;4:79–90.
22. Dennehy JJ. What can phages tell us about host–pathogen coevolution? *Int J Evol Biol* 2012;2012:396165.
23. Koskella B, Brockhurst MA. Bacteria–phage coevolution as a driver of ecological and evolutionary processes in microbial communities. *FEMS Microbiol Rev* 2014;38:916–931.
24. Chaudhry WN, Pleška M, Shah NN, Weiss H, McCall IC, et al. Leaky resistance and the conditions for the existence of lytic bacteriophage. *PLoS Biol* 2018;16:e2005971.
25. Hofnung M, Jezierska A, Braun-Breton C. *lamB* mutations in *E. coli* K12: growth of lambda host range mutants and effect of nonsense suppressors. *Mol Gen Genet* 1976;145:207–213.
26. Thirion JP, Hofnung M. On some genetic aspects of phage lambda resistance in *E. coli* K12. *Genetics* 1972;71:207–216.
27. Elliott J, Arber W. *E. coli* K-12 pel mutants, which block phage lambda DNA injection, coincide with *ptsM*, which determines a component of a sugar transport system. *Mol Gen Genet* 1978;161:1–8.
28. Erni B, Zanolari B, Kocher HP. The mannose permease of *Escherichia coli* consists of three different proteins: amino acid sequence and function in sugar transport, sugar phosphorylation, and penetration of phage lambda DNA. *J Biol Chem* 1987;262:5238–5247.
29. Esquinas-Rychen M, Erni B. Facilitation of bacteriophage lambda DNA injection by inner membrane proteins of the bacterial phosphoenol-pyruvate: carboxylate phosphotransferase system (PTS). *J Mol Microbiol Biotechnol* 2001;3:361–370.
30. Scandella D, Arber W. An *Escherichia coli* mutant which inhibits the injection of phage lambda DNA. *Virology* 1974;58:504–513.
31. Spanakis E, Horne MT. Co-adaptation of *Escherichia coli* and coliphage lambda vir in continuous culture. *J Gen Microbiol* 1987;133:353–360.
32. Meyer JR, Agrawal AA, Quick RT, Dobias DT, Schneider D, et al. Parallel changes in host resistance to viral infection during 45,000 generations of relaxed selection. *Evolution* 2010;64:3024–3034.
33. Burmeister AR, Lenski RE, Meyer JR. Host coevolution alters the adaptive landscape of a virus. *Proc Roy Soc B: Biol Sci* 2016;283:20161528.
34. Meyer JR, Flores CO, Weitz JS, Lenski RE. Key innovation in a virus catalyzes a coevolutionary arms race. *ALife Proceedings* 2008;13:532–533.
35. Baba T, Ara T, Hasegawa M, Takai Y, Okumura Y, et al. Construction of *Escherichia coli* K-12 in-frame, single-gene knockout mutants: the Keio collection. *Mol Syst Biol* 2006;2:0008.
36. Burmeister AR, Sullivan R, Lenski RE. Fitness costs and benefits of resistance to phage lambda in experimentally evolved *Escherichia coli*. Banzhaf W, Cheng B, Deb K, Holekamp K, Lenski RE, et al. (eds). In: *Evolution in action: Past, present, and futuration: Past, present, and future*. New York, NY: Springer; 2020. pp. 123–143.
37. Williams N, Fox DK, Shea C, Roseman S. Pel, the protein that permits lambda DNA penetration of *Escherichia coli*, is encoded by a gene in *ptsM* and is required for mannose utilization by the phosphotransferase system. *Proc Natl Acad Sci U S A* 1986;83:8934–8938.
38. Scandella D, Arber W. Phage lambda-DNA injection into *Escherichia coli* pel mutants is restored by mutations in phage gene V or gene H. *Virology* 1976;69:206–215.
39. Gupta A, Peng S, Leung CY, Borin JM, Weitz JS, et al. Leapfrog dynamics in phage–bacteria coevolution revealed by joint analysis of cross-infection phenotypes and whole genome sequencing. *bioRxiv* 2020.

Edited by: M. Brockhurst