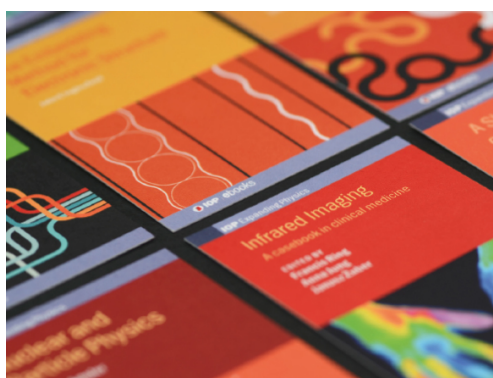


PAPER • OPEN ACCESS

Comparing spontaneous and pellet-triggered ELMs via non-linear extended MHD simulations

To cite this article: A Cathey *et al* 2021 *Plasma Phys. Control. Fusion* **63** 075016

View the [article online](#) for updates and enhancements.






IOP | ebooks™

Bringing together innovative digital publishing with leading authors from the global scientific community.

Start exploring the collection—download the first chapter of every title for free.

Comparing spontaneous and pellet-triggered ELMs via non-linear extended MHD simulations

A Cathey^{1,2,*} , M Hoelzl¹ , S Futatani³ , P T Lang¹, K Lackner¹, G T A Huijsmans^{4,5}, S J P Pamela⁶, S Günter¹, the JOREK team⁷, the ASDEX Upgrade Team⁸ and the EUROfusion MST1 Team⁹

¹ Max Planck Institute for Plasma Physics, Boltzmannstr.2, 85748 Garching, Germany

² Physik Department, TUM, 85748 Garching, Germany

³ Universitat Politècnica de Catalunya, Barcelona, Spain

⁴ CEA, IRFM, 13108 Saint-Paul-Lez-Durance, France

⁵ Eindhoven University of Technology, P.O. Box 513, 5600 MB Eindhoven, The Netherlands

⁶ CCFE, Culham Science Centre, Abingdon, Oxon OX14 3DB, United Kingdom

E-mail: andres.cathey@ipp.mpg.de

Received 26 January 2021, revised 7 March 2021

Accepted for publication 14 April 2021

Published 3 June 2021



CrossMark

Abstract

Injecting frozen deuterium pellets into an ELMy H-mode plasma is a well established scheme for triggering edge localized modes (ELMs) before they naturally occur. This paper presents non-linear simulations of spontaneous type-I ELMs and pellet-triggered ELMs in ASDEX Upgrade performed with the extended MHD code JOREK. A thorough comparison of the non-linear dynamics of these events is provided. In particular, pellet-triggered ELMs are simulated by injecting deuterium pellets into different time points during the pedestal build-up described in A Cathey *et al* (2020 *Nuclear Fusion* **60** 124007). Realistic ExB and diamagnetic background plasma flows as well as the time dependent bootstrap current evolution are included during the build-up to accurately capture the balance between stabilising and destabilising terms for the edge instabilities. Dependencies on the pellet size and injection times are studied. The spatio-temporal structures of the modes and the resulting divertor heat fluxes are compared in detail between spontaneous and triggered ELMs. We observe that the premature excitation of ELMs by means of pellet injection is caused by a helical perturbation described by a toroidal mode number of $n = 1$. In accordance with experimental observations, the pellet-triggered ELMs show reduced thermal energy losses and a narrower divertor wetted area with respect to spontaneous ELMs. The peak divertor energy fluence is seen to decrease when ELMs are triggered by pellets injected earlier during the pedestal build-up.

⁷ see the author list of (M Hoelzl *et al* 2021 *Nucl. Fusion* **61** 065001).

⁸ see the author list of (H Meyer *et al* 2019 *Nucl. Fusion* **59** 112014).

⁹ see the author list of (B Labit *et al* 2019 *Nucl. Fusion* **59** 0860020).

* Author to whom any correspondence should be addressed.



Original Content from this work may be used under the terms of the [Creative Commons Attribution 4.0 licence](https://creativecommons.org/licenses/by/4.0/). Any further distribution of this work must maintain attribution to the author(s) and the title of the work, journal citation and DOI.

Keywords: ELM, JOEK, pellet, ASDEX Upgrade

(Some figures may appear in colour only in the online journal)

1. Introduction

Type-I edge localized modes (ELMs) are expected to induce large losses and consequently excessive transient divertor heat loads in large machines like ITER, which can affect the lifetime of the components [1]. Low-frequency large type-I ELMs must therefore be avoided in ITER either by small-ELM scenarios [2], ELM-free scenarios like QH-mode [3], active control via external resonant magnetic perturbations (RMPs) [4] or pellet ELM triggering [5, 6]. Since RMPs may not be applicable in all phases of plasma operation (e.g. ramp-up and ramp-down) due to particular constraints on the plasma parameters and the edge safety factor and the possibilities of access to no-ELM or small-ELM regimes remain uncertain, pellet ELM triggering may offer a complementing approach and is foreseen as backup scheme in ITER. Additionally, the use of ELM pacing by means of pellet injection is an option for ITER to avoid the accumulation of impurities in the plasma [1]. It has been shown experimentally that pellets allow to increase the ELM frequency and reduce the thermal energy losses associated to an individual ELM crash [5]. For pellet ELM triggering to be successful in mitigating the impact of ELMs on the divertor lifetime, the properties of spontaneous and pellet-triggered ELMs need to be investigated in direct comparison because experimental observations suggest that a reduced extent of the wetted area can cancel out the beneficial effects of the decreased energy expelled by pellet-triggered ELMs [7].

In the present paper, directly comparable simulations of spontaneous and pellet-triggered ELMs are performed with the non-linear extended MHD code JOEK [8–10]. For this purpose, pellet injections are considered during different time points of the pedestal build-up; the setup is thoroughly described in reference [11]. Realistic resistivity, heat diffusion anisotropy, and plasma background flows are taken into account and two different pellet sizes are studied. It has been observed experimentally that injecting pellets during the pedestal build-up does not always lead to ELM triggering [12]. For the present paper, we solely concentrate on injections that manage to trigger an ELM. Injections performed at earlier times during the pedestal build-up lie outside the scope of the present study and are investigated separately in reference [13], where the experimentally observed lag-time in the ELM cycle during which ELM triggering is not possible is compared to simulation results.

The first experiments on ELM pacing and mitigation by pellet injection were performed at ASDEX Upgrade (AUG) [5] demonstrating an increase of the ELM frequency by more than 50% in a reliable manner. With high pellet injection frequencies, undesired fuelling effects were observed due to the comparably large pellet sizes available in this machine. Pellet injection was shown to trigger an ELM when the pellet-induced seed perturbation was roughly half-way between the

separatrix and the pedestal top (~ 3 cm measured along the pellet trajectory), or ~ 0.1 ms after the pellet crossed the separatrix (for injection velocities of ~ 600 m s⁻¹) [14]. Key findings from AUG with carbon wall (AUG-C) were confirmed at larger machines like DIII-D [6] and JET [15]. Investigation of pellet-triggered MHD events in AUG-C and JET showed that triggered and spontaneous ELMs display essentially the same features. In particular, the triggered ELM correlates to the spontaneous ELM type occurring at the same plasma conditions [16].

Experiments with metal walls in JET with ITER-like wall (JET-ILW) and in AUG with tungsten coated walls (AUG-Ws) showed that injecting pellets at different times during the ELM cycle are not always able to trigger ELMs [12, 17, 18]. Said lag-time represents an important uncertainty in terms of pellet ELM pacing in future machines with metal walls, like ITER. Another uncertainty that prevails for the feasibility of pellet injection as an ELM control method is the wetted area of the heat flux deposition on the divertor targets. In particular, from current machines it is known that the wetted area for pellet-triggered ELMs is smaller than that for spontaneously occurring ELMs [7]. Therefore, even if pellet-triggered ELMs cause smaller energy losses than spontaneous ELMs, the fact that said energy is deposited over a smaller area could mean that there is no reduction in the energy fluence for pellet-triggered ELMs.

The paper is structured as follows. Section 2 provides essential information regarding the physics model and the pellet module in JOEK and it provides a brief overview of previous pellet-triggered ELM simulations produced with JOEK. Section 3 describes the simulation set-up and the different pellet injection parameters used. A thorough description of the temporal dynamics of spontaneous and triggered ELMs, including detailed analysis of the observed similarities and differences, is provided in section 4. Section 5 is focused on comparing several spontaneous and pellet-triggered ELMs in terms of ELM sizes, toroidal mode spectra, divertor incident power, peak heat fluxes, and energy fluence. The paper ends with the main conclusions and outlook to future work.

2. JOEK and overview of existing simulations

The JOEK code is a versatile MHD code (see section 4 of reference [19] for an overview) that is used to non-linearly solve the reduced and full MHD equations. The reduced MHD model with various extensions [20, 21] has been used for this work. It evolves the coupled equations for poloidal magnetic flux ψ , single fluid mass density ρ and temperature $T (= T_e + T_i)$, parallel plasma velocity v_{\parallel} , and electrostatic potential Φ . Equations for the toroidal current density j_{ϕ} and the vorticity ω are also solved for numerical reasons. Further details of the model are outlined below.

2.1. JOREK reduced MHD model

The JOREK reduced MHD model follows an ansatz-based approach and is built on two simplifying assumptions regarding the magnetic field and on the plasma velocity [10, 22]. The latter is the zeroth order assumption for the plasma velocity perpendicular to the magnetic field $\mathbf{v}_\perp = \mathbf{v}_{E \times B}$, and allows a potential formulation for \mathbf{v}_\perp through the electrostatic scalar potential, i.e. $\mathbf{E} = -\nabla\Phi$. The former is the consideration of a static toroidal magnetic field that only varies with major radius described by $B_{\text{tor}}(R) = B_{\text{axis}}R_{\text{axis}}/R = F_0/R$. This assumption simultaneously eliminates one dynamic variable and the fast magnetosonic wave from the system.

Introducing the assumptions above into the visco-resistive MHD equations, and considering diffusive particle and heat transport, results into the base reduced MHD equations in JOREK [8]. The perpendicular diffusive particle and heat transport used in JOREK are ad-hoc diffusion profiles meant to represent anomalous transport. The parallel heat diffusion is temperature dependent and it is set by the realistic Spitzer–Härm coefficients. It is possible to include the two-fluid diamagnetic drift effect onto the base reduced MHD equations. In order to do so, the representation for the perpendicular plasma velocity is changed to $\mathbf{v}_\perp = \mathbf{v}_{E \times B} + \mathbf{v}_{\text{ion}}^*$. Due to this extension to reduced MHD, the radial electric field well ubiquitous to the edge of H-mode plasmas (and roughly proportional to the ion diamagnetic drift velocity $\mathbf{v}_{\text{ion}}^* \sim \nabla p_i/n$) can be considered in JOREK simulations [23, 24]. The presence of this radial electric field has important consequences regarding the stability of the underlying instabilities that give rise to ELMs [25]. These extensions allowing to incorporate realistic plasma flows are used in the present work.

The reduced MHD model is further extended to include the self-generated neoclassical bootstrap current that is formed due to collisions between trapped and passing particles. The bootstrap current density increases with increasing pressure gradient. To include this neoclassical effect in JOREK, a source term determined by the Sauter formula of the bootstrap current is considered in the induction equation [26]. The resulting equations may be found in [21].

2.2. Pellet module

In order to study the influence of pellet injection onto the plasma, JOREK features a so-called pellet module. The pellet module represents the pellet particles that will become ablated and deposited to the bulk plasma as a localised adiabatic 3D density source. The density source is poloidally localised to a narrow area, and it is stretched to span a user-defined toroidal arc. The adiabatic density source moves with the pellet position.

At a given time point, the model describes the number of particles that are ionised and become part of the bulk plasma. The number of particles is calculated from the neutral gas shielding model using the time-varying pellet size and the local plasma density and temperature. The ablation process is adiabatic, therefore no energy source/sink is considered. Once the ablated pellet particles become part of the

bulk plasma, the resulting plasmoid becomes displaced due to the ∇B effect reproducing the experimentally observed asymmetry in particle assimilation between high-field side (HFS) and low-field side (LFS). Namely, when the pellet is injected from the HFS, as done for all the simulations presented in this paper, the density perturbation shows a displacement towards the core region.

The particle source does not resolve the fine structure of the pellet (1) for numerical reasons due to the finite resolution available and (2) for physical reasons as the processes inside the ablation cloud are determined by kinetic effects that are not part of our model and not of interest for the large-scale impact of the pellet onto the plasma dynamics. In that sense, the source distribution represents the already relaxed ablation cloud. A more refined treatment of the ablation physics is investigated separately from this work. For an in-depth description of the pellet module used, the reader is referred to reference [27].

The pellet travels in a straight line following the direction of the predetermined injection velocity. The adiabatic 3D density source locally increases the plasma density and, in turn, directly causes a reduction in temperature in such a way that the instantaneous local pressure remains unchanged. The reduced temperature in the pellet ablation cloud (that stretches along the magnetic field lines) is partially restored by fast parallel electron heat conduction ($\tau_{\chi_\parallel} = (2\pi Rq)^2/\chi_\parallel \sim 0.1 \mu\text{s}$), and the excess density is redistributed along the magnetic field lines in the slower time scale of parallel convection with the ion sound speed ($\tau_s = 2\pi Rq/c_s \sim 1 \text{ ms}$). Consequently, there is a net increase of the local pressure resulting from the ablation that is responsible for ballooning mode excitation in case of pellet ELM triggering.

2.3. Relation to previous simulation work

ELM physics was studied in various ways already using the JOREK code—first in reference [8]. Further relevant simulations with JOREK include: spontaneous ELMs with realistic plasma background flows [20], RMP penetration [28, 29], investigation of ELM-RMP interactions [30], Quiescent H-Mode [31], triggering of ELMs by vertical magnetic kicks [32], and a direct comparison of the divertor heat fluence caused by spontaneous ELMs to experimental scaling laws [21]. Pellet ELM triggering has also been studied with JOREK before, providing an explanation for the mechanism of pellet ELM triggering by a localised increase of the pressure in the re-heated ablation cloud and including experimental comparisons to JET and DIII-D [27, 33, 34]. An overview of ELM related non-linear MHD simulations worldwide is given in [35]. However, the field has evolved rapidly since the publication of that article. A recent overview of ELM and ELM control simulations with JOREK is given in section 5 of [19].

For AUG, in particular the localised structures forming during ELM crashes [36], non-linear mode coupling associated with an ELM crash [37], the toroidal structure of an ELM crash [38], and ELM control via RMP fields [39] have

been studied. Recently, type-I ELM cycles and the triggering mechanism responsible for the violent onset of the ELM crash were studied for the first time [11]. In the present paper, pellet-triggered ELM simulations are compared to spontaneous ELMs from the aforementioned cited article and new dedicated simulations.

The present paper goes beyond previous studies of pellet-triggered ELMs by producing a direct comparison between simulations of type-I ELM cycles and pellet-triggered ELMs where both are performed using the same extended MHD model including ExB and diamagnetic background flows and the same plasma conditions with realistic plasma parameters.

3. Simulation set-up and parameters

Recent simulations of type-I ELM cycles show that the seed perturbations out of which instabilities grow prior to the ELM have an important effect on the dynamics of the non-linear dynamics and properties of the crash. Namely, starting from arbitrary seed perturbations, instead of self-consistent perturbations, causes larger ELMs when the pedestal build-up is considered. Simulating type-I ELM cycles circumvents this problem since the seed perturbations for all ELMs (except the first) retain the ‘memory’ of the previous existence of an ELM, i.e. have non-negligible amplitudes and peeling-ballooning (PB) mode structure [11]. The present study uses the first three type-I ELMs from [11] to compare the dynamics of spontaneous ELMs and pellet-triggered ELMs. Additionally, new simulations of type-I ELM cycles with increased toroidal resolution are performed to compare against the pellet-triggered ELMs.

The spontaneous ELM simulations are set up in the following way. An ideal MHD stable post-ELM equilibrium reconstruction for AUG shot #33 616 is used as initial conditions for the simulations. We set stationary heat and particle diffusion (perpendicular to \mathbf{B}) profiles with a well in the pedestal region to model the H-mode edge transport barrier as well as stationary heat and particle sources such that the pedestal builds up with time and crosses the PB stability boundary. This simplified pedestal build-up does not take into account the dynamical response of anomalous transport, nor does it include the physics of neutrals, which are key for a realistic consideration of the time-evolving particle source profiles. Since we use a single fluid model, the disparate evolution timescales of the electron and ion temperatures is neglected. Plasma resistivity and parallel heat transport are modelled with fully realistic parameters, and with Spitzer and Spitzer–Härm temperature dependencies, respectively. Simulations are performed with a high resolution finite element grid in the poloidal direction and the convergence of the results has been verified.

With the density and temperature profiles steepening as the simulation evolves, the radial electric field and the neoclassical bootstrap current evolve accordingly. Four pressure profiles at the outer midplane are shown in figure 1. These correspond to the pre-ELM state of one spontaneous ELM (full line labelled Sp318.1—the naming conventions are described later), and to the pellet injection times: 12, 14, and 15 ms (dashed lines in blue, black, and grey respectively).

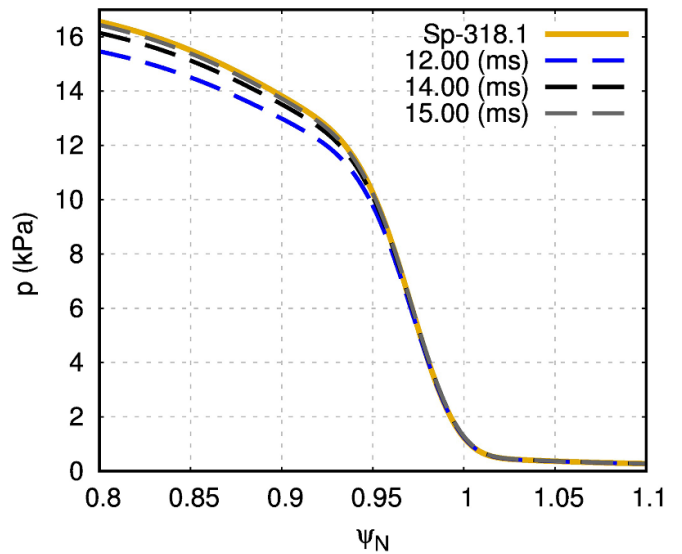


Figure 1. Pressure profiles at the outboard midplane in the pre-ELM stage of a spontaneous ELM (full lines) and at the different pellet injection times (dashed lines).

3.1. Pellet injection

The AUG pellet injection system has an injection angle of $\alpha_{\text{injection}} = 72^\circ$, and it can handle pellets of different nominal sizes and velocities. These correspond to 1.5×10^{20} , 2.4×10^{20} , and 3.7×10^{20} D atoms per pellet and $v_p = 240, 560, 900$, and 1040 m s^{-1} . However, material is lost on the guide tube as the pellet travels to the plasma and, ultimately, the pellet sizes arriving at the plasma show significant variations from their nominal sizes. These variations are most pronounced with increasing pellet injection velocity and, on average, account for roughly 50% of the nominal mass lost for $v_p = 560 \text{ m s}^{-1}$ [40]. For the pellets used in the present simulations, we chose $v_p = 560 \text{ m s}^{-1}$ and two different pellet sizes of 0.8×10^{20} and 1.5×10^{20} D atoms per pellet (‘small’ and ‘large’). These values reflect particle content *after losses* in the guide tube and therefore correspond approximately to the range of accessible pellet sizes in the experiment. The pellets have the same particle density and, therefore, the 0.8×10^{20} D pellet has a smaller radius than the 1.5×10^{20} D pellet.

The pellet module describes the pellet moving straight with constant velocity. The simplifying assumption of a constant pellet velocity is motivated by AUG experimental observations [14]. Using the same initial position and injection velocity and angle, the two different pellet sizes are injected at 12 and 14 ms. The small pellet is additionally injected at 15 ms. We adopt a naming convention for the pellet-triggered ELMs using the pellet size and injection time. For example, to refer to the ELM triggered by injecting the small (0.8×10^{20} D atoms) pellet at 14 ms, we use the name Tr-08-14ms. Accordingly, the large pellet injected at 12 ms is named Tr-15-12ms. The pellet particle content is evolved fully consistently with the modelled ablation source. Due to the MHD activity excited by the pellet injection, some particle losses arise from the confined region. Therefore, the particle content inside the confined

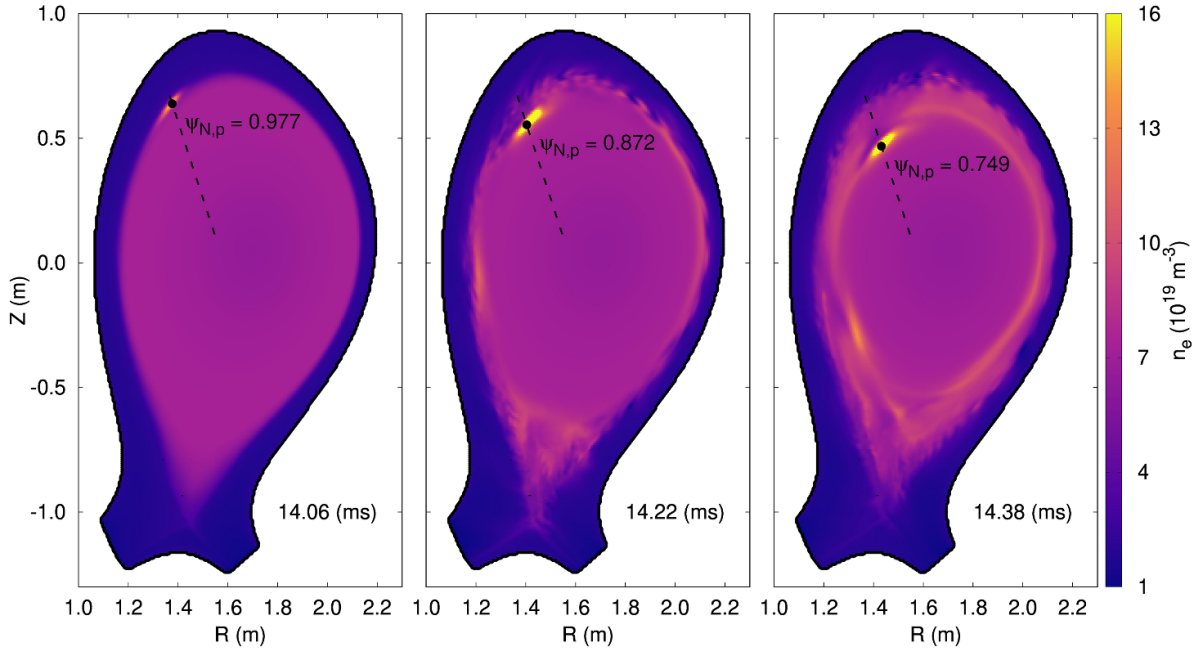


Figure 2. Three different time points of the poloidal profile of the density for Tr-15-14ms—large (1.5×10^{20} D atoms) pellet injection at 14 ms. The redistribution of the excess density introduced by the pellet takes place due to parallel convection at the local sound speed. The pellet trajectory is shown as black dashed line. The pellet location at the three different time points is $\psi_N = 0.977$, 0.872 , and 0.749 respectively. The number of particles deposited from the pellet to the bulk plasma increases as the pellet reaches regions of higher temperature and density, i.e. reaches the pedestal top location. The peak local density at each time frame is 16.0×10^{19} , 27.0×10^{19} , and $26.6 \times 10^{19} \text{ m}^{-3}$.

region after the pellet has fully ablated does not exactly correspond to the particle content before pellet injection plus the pellet content.

Figure 2 shows poloidal planes (at the toroidal angle corresponding to the pellet injection) of the electron number density n_e at three different time points after a large pellet has been injected at 14 ms, i.e. Tr-15-14ms. The pellet trajectory is also plotted with a dashed black line. The first frame shows the density $60 \mu\text{s}$ after the pellet was injected. At this time, no observable non-axisymmetric perturbations (other than the pellet) are seen, and pellet is located inside of the separatrix in the radial position $\psi_N = 0.977$. Shortly thereafter non-axisymmetric MHD activity is prompted and the ELM is triggered. The time of ELM onset is 14.09 ms and the pellet position at the ELM onset is $\psi_N = 0.958$. The plot of n_e during the pellet-triggered ELM crash can be observed in the second and third frames of figure 2 at 14.22 and 14.38 ms, respectively. In these frames, strong ($\delta n_e/n_e \sim 1$) PB modes at the edge of the confined region are observed.

3.2. Toroidal mode numbers

For the spontaneous ELMs simulation of [11], which required resolving the fast timescales related to the ELMs ($\tau_A \sim 0.5 \mu\text{s}$) and the slow time-scales of the pedestal build-up ($\tau_{\text{ped}} \sim 1/f_{\text{ELM}} \sim 10 \text{ ms}$), the even toroidal mode numbers until $n = 12$ were considered, i.e. the toroidal periodicity chosen for those simulations was $n_{\text{period}} = 2$. This is equivalent to simulating only half of the torus, and it was chosen in

order to reduce the computational cost of the simulations—while maintaining the cyclical dynamics. Recent code optimizations [41] allow to increase the toroidal resolution for the present work. Thus, dedicated spontaneous ELM simulations were performed for this paper with higher maximum toroidal mode numbers, $n_{\text{max}} = 15$, 18 , and 20 . For these dedicated simulations the ELM crashes become faster and more violent. For this reason, we focus the comparison on these new spontaneous ELM crash simulations with increased n_{max} . Where comparisons are based on simulations from reference [11], we restrict them to time-integrated quantities as they are less dependent on toroidal resolution.

The new spontaneous ELM simulations with increased n_{max} include the toroidal mode numbers $n = 0\text{-}3\text{-}15$, $n = 0\text{-}3\text{-}18$ and $n = 0\text{-}2\text{-}20$. The ELM crashes used for the comparisons in this paper are labelled reflecting this toroidal resolution: The j th spontaneous ELM simulated with the following toroidal mode numbers $n = 0 - n_{\text{period}} - n_{\text{max}}$ is named Sp- $n_{\text{period}}n_{\text{max}} \cdot j$. As an example, the first spontaneous ELM simulated with the toroidal mode numbers $n = 0\text{-}3\text{-}18$ is named Sp-318.1. Finally, a simulation with a further increased resolution including the toroidal mode numbers $n = 0\text{-}3\text{-}30$ was performed to check convergence. The relative difference between the ELM-related thermal energy lost between the ELM crash simulated with $n = 0\text{-}3\text{-}15$ and $n = 0\text{-}3\text{-}30$ was found to be $\sim 4\%$.

When simulating pellet injection, it is not possible to use a ‘periodicity’ greater than 1 because the $n = 1$ toroidal mode number is always needed and typically observed to be dominant [27, 34]. As a result, the toroidal discretisation in JOREK must contain the entire mode spectrum, i.e. the entire torus has

to be simulated. The toroidal mode numbers included for all pellet-triggered ELM simulations presented in this work are $n = 0$ -1-12. As can be seen from the energy spectra shown in reference [13], the $n = 12$ mode is strongly sub-dominant in all cases providing a justification for this choice. Higher toroidal resolutions will only be affordable after future code optimizations.

4. Spontaneous and pellet-triggered ELMs

This section is divided into four parts. In section 4.1, we present a detailed description of the temporal dynamics of a representative spontaneous ELM crash (Sp-318.1), and in section 4.2 of a representative pellet-triggered ELM (Tr-08-14ms). Each subsection details the evolution of the energies of the non-axisymmetric perturbations present in the simulations, the power that is incident on the simplified divertor targets, the time evolving reconnecting magnetic field, and other dynamical quantities of interest. Thereafter, in section 4.3 a side-by-side comparison in terms of the heat fluxes between the representative pellet-triggered and spontaneous ELMs is presented. Finally, section 4.4 describes the differences and similarities of the non-axisymmetric mode activity present during the ELM crash between Sp-318.1 and Tr-08-14ms. A systematic comparison of all cases is described later in section 5.

4.1. Spontaneous ELMs

Here, we provide a detailed look at the dynamics of a representative spontaneous ELM crash. In this section, we focus on the first type-I ELM from the simulation with $n = 0$ -3-18. This ELM crash takes place at 16 ms, and the pre-ELM pressure profile was shown in figure 1. The magnetic energy of the non-axisymmetric perturbations, the incident power on the inner and outer divertors, and the toroidally averaged outboard midplane maximum edge pressure gradient are shown in figures 3(a)–(c). During the ELM crash the thermal energy stored inside the separatrix is reduced from 421 to 388 kJ, i.e. the ELM size is $\Delta W_{\text{ELM}} = 33$ kJ and the relative ELM size is $\Delta E_{\text{ELM}} = \Delta W_{\text{ELM}}/W_{\text{preELM}} \approx 7.8\%$. As a result of the energy lost from the confined region, the incident power to the inner and outer divertors increases sharply from the inter-ELM values of 2.2 and 3.3 MW to peak values of 22.2 and 43.8 MW, respectively. After the crash, $P_{\text{div},\text{in}/\text{out}}$ return to the inter-ELM values within roughly 0.6 ms.

The heat flux that arrives at the divertor targets is $q(t, s, \phi)$, where t is time, s is the distance along the target, and ϕ is the toroidal angle. The total power that reaches a given divertor target is defined by $P_{\text{div}} = \int_0^{2\pi} \int_{s_0}^{s_{\text{max}}} q(t, s, \phi) R ds d\phi$, where R is the major radius. During the peak of the ELM crash, the power that reaches the outer divertor target $P_{\text{div},\text{out}}$ is roughly twice the power reaching the inner target $P_{\text{div},\text{inn}}$. This power asymmetry is observed for all the simulated spontaneous and pellet-triggered ELMs. In experiments under similar conditions, i.e. with the ion $\mathbf{B} \times \nabla B$ direction pointing to the active X-point, the inner divertor receives more energy than the outer

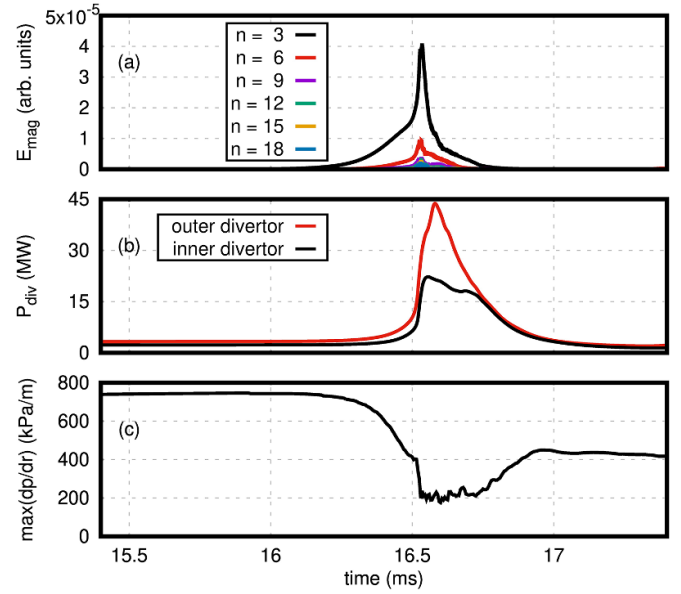


Figure 3. Time evolution of the magnetic energies (a), incident power on the inner and outer divertors (b), and change in the toroidally averaged outboard midplane maximum edge pressure gradient (c) during a spontaneous ELM.

divertor [42]. Without a proper inclusion of ExB and diamagnetic background flows, this discrepancy would be more pronounced [43]. The main reason for the remaining differences lies in the simplified model for the scrape-off layer (SOL) and in the single temperature model used here. Separate efforts are underway to advance our models including hybrid and kinetic modelling, but are not part of the present work. Nevertheless, our modelling can still qualitatively reproduce experimental observations such as the reduction of the wetted area of pellet-triggered ELMs with respect to spontaneous ELMs.

The maximum (toroidally averaged at the outer midplane) pressure gradient crashes rapidly as a result of the ELM as shown in figure 3(c). This reduction causes the drive for the underlying instabilities to be removed and for the ELM crash to conclude shortly thereafter. This allows the maximum ∇p to recover quickly until it transiently stagnates at ~ 16.8 ms due to the excitation of post-cursor modes, which are not the subject of the present work. Afterwards, the pedestal builds up further until the next ELM appears (not shown). The pedestal profiles before (16.20 ms) and after (17.10, 17.20, and 17.30 ms) the ELM crash are shown in figure 4, where it is evident that the spontaneous ELM reduces the edge pedestal pressure. Together with the depletion of the pressure pedestal, the radial electric field and the bootstrap current density are similarly reduced.

Poincaré plots for this spontaneous ELM are shown in figure 5 at different times for the radial region from $\psi_N = [0.8 - 1.0]$. Each Poincaré plot is produced by following 400 magnetic field lines with different radial and poloidal initial positions for 3000 toroidal turns. The positions of the field lines when crossing the toroidal position $\phi = 0$ are plotted. Different colours are used for each field line such that the ‘mixing of colours’ visualizes the radial diffusion of field lines

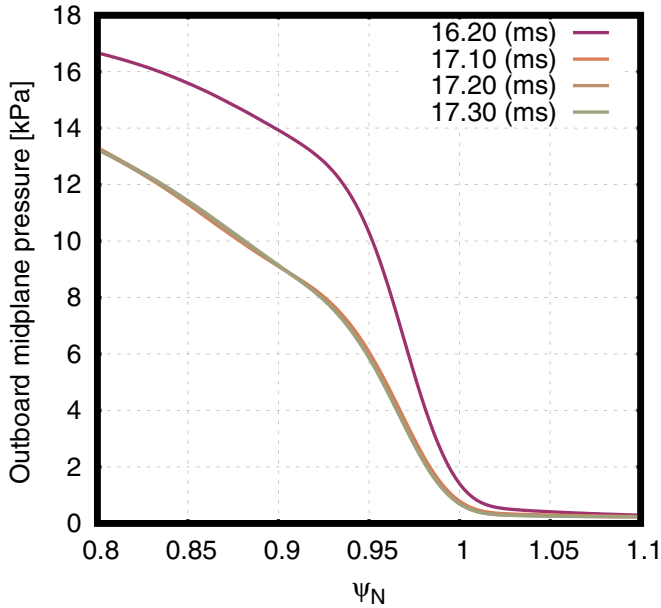


Figure 4. Outer midplane pressure profiles before and after a spontaneous ELM crash (Sp-318.1). The pressure at the radial location $\psi_N = 0.95$ goes from ~ 10.3 kPa to ~ 5.9 kPa.

during stochastisation. The y-axis corresponds to the geometrical poloidal angle θ with the outboard midplane located at $\theta = 0$. The time of maximum heat flux $P_{\text{outer div}}$ to the outer divertor is $t_0 = 16.57$ ms, and the different times correspond to $t - t_0 = [-0.22 : 0.04 : 0.02]$ ms.

In the first frame, $t - t_0 = -0.22$ ms, the energy of the perturbations is already large, as can be seen in figure 3(a), and the density perturbations are comparable to the background plasma ($\delta n/n \sim 1$). These are PB modes which are responsible for the non-axisymmetric magnetic fields observed in figure 5. A strong deformation of the flux surfaces at the very edge of the plasma ($\psi_N \gtrsim 0.88$) causes an increase in stochastic cross-field transport through parallel heat (Spitzer-Härm) diffusion that may be evidenced by the increases to the divertor incident power shown in figure 3(b). In the region $\psi_N \approx [0.80-0.88]$ three sets of magnetic islands located at the $q = 11/3, 12/3,$ and $13/3$ rational surfaces are present at $t - t_0 = -0.22$ ms. The amplitude of the PB modes increases further thereby causing the stochastic magnetic topology to erode further inwards. The increased stochastisation around the time of maximum divertor heat flux (the two bottom plots of figure 5) is clearly visible. Field lines in the outer plasma regions $\psi_N \gtrsim 0.87$ reach the divertor targets with a very short connection length in this phase, as reflected by the strongly reduced number of points visible close to the plasma edge.

Figure 5 features characteristic structures in the outermost edge. These lobe structures represent splitting of the strike lines that hit the divertor targets (and are shown clearly later on in figure 12). Such splitting is a common experimental observation, and evaluating quasi-toroidal mode numbers has been accomplished through such observations [42, 44]. At the time of $\max(P_{\text{outer div}})$, $t = t_0$, the heat flux impinging on different

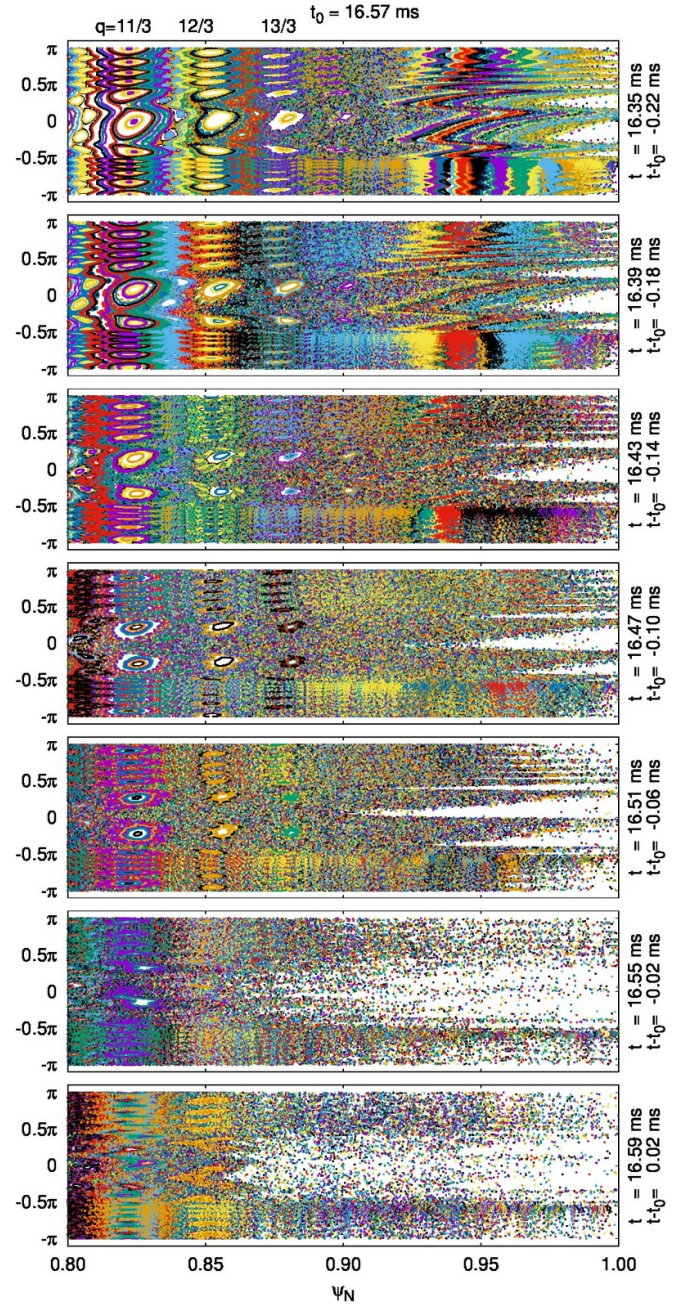


Figure 5. Seven Poincaré plots at different times with respect to $t_0 = 16.57$ ms. The chosen times are separated by 0.04 ms. Precursor modes cause the non-axisymmetric topology observed in the earliest plots (top panels). The growing perturbations cause the region with short connection length (white region) to penetrate further inward until $\psi_N \approx 0.87$ (bottom panels).

toroidal angles¹⁰ of the outer divertor is shown in figure 6, and the strike line splitting can be inferred from the slightly slanted stripes in the heat flux profile.

An important feature in terms of the heat flux onto the divertor target, which is related to the strike line splitting, is

¹⁰ The range of toroidal angles is limited to $\phi = [0-120]^\circ$ because this simulation only considers toroidal mode numbers which are multiples of 3, i.e. one third of the tokamak.

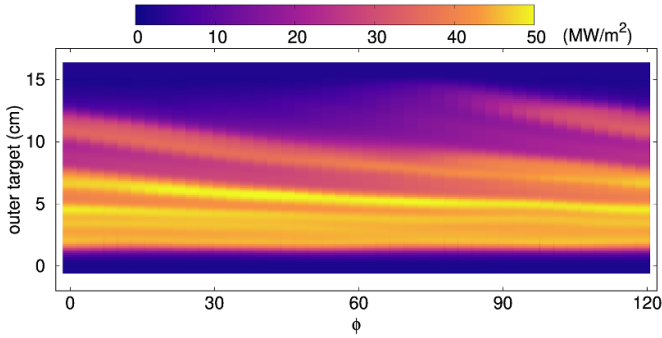


Figure 6. Outer divertor heat flux profile along different toroidal angles at the time of maximum $P_{\text{outer div}}$, $t_0 = 16.57$ ms. The footprint corresponding to several strike lines can be observed. The wetted area at this time point is $A_{\text{wet}} \approx 0.95$ m².

the area over which the energy is deposited, i.e. the wetted area

$$A_{\text{wet}} = \frac{\int_0^{2\pi} \int q(s, t = t_0) ds R d\phi}{\max(q(s, t = t_0))} = \frac{P_{\text{div}}(t = t_0)}{\max(q(s, t = t_0))}.$$

For the type-I ELM crash discussed here (Sp-318.1), the wetted area of the outer divertor at the time corresponding to figure 6 is $A_{\text{wet}} \approx 0.95$ m².

4.2. Pellet-triggered ELMs

Now, we shift the focus to the temporal dynamics relevant to pellet-triggered ELMs. To do so, we present a detailed description of a representative ELM triggering case where a pellet of 0.8×10^{20} D atoms is injected at 14 ms (Tr-08-14ms), i.e. 2 ms before the spontaneous ELM crash would appear. Like all the pellet-triggered ELMs present in this work, the toroidal mode numbers included in the simulation are $n = 0-1-12$. At 14 ms, the thermal energy stored inside the plasma at the time of injection is (~ 5 kJ) less than before the spontaneous ELM at 16 ms because of the continuous pedestal build-up. In figures 7(a)–(c) we show the normalised magnetic energy of the non-axisymmetric perturbations, the power that is incident onto the inner and outer divertor targets, and the toroidally averaged maximum pressure gradient.

The $n = 1$ magnetic perturbation is dominant as shown in figure 7(a). As the pellet is introduced in the simulation, the $n = 1$ perturbation begins to grow and it is followed by perturbations characterised by all the remaining toroidal mode numbers. The thermal energy expelled by Tr-08-14ms is roughly 18 kJ, which corresponds to a relative ELM size of 4.4%. This energy ultimately reaches the divertor targets, as observed in figure 7(b). The peak incident power onto the inner and outer divertors caused by this pellet-triggered ELM are 10.8 and 20.2 MW, respectively.

The initial position of the pellet is (1.365, 0.674) m, which corresponds to an open flux surface just outside the separatrix: $\psi_N = 1.019$. The maximum pressure gradient region is at $\psi_N = 0.972$, which is roughly 4.5 cm along the pellet trajectory. Considering the pellet velocity of $v_p = 560$ m s⁻¹, the time required to reach the maximum pressure gradient location

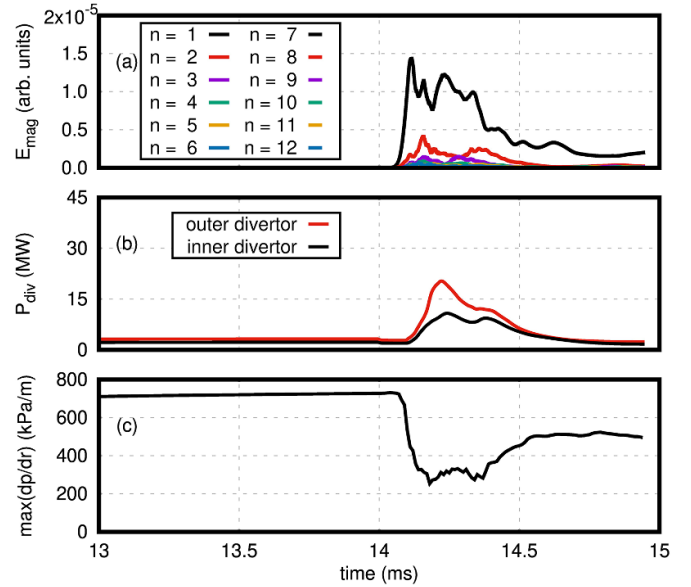


Figure 7. Time evolution of the magnetic energies (a), incident power on the inner and outer divertors (b), and change in the maximum edge pressure gradient (c) during a pellet-triggered ELM corresponding to a pellet of 0.8×10^{20} D atoms at 14 ms.

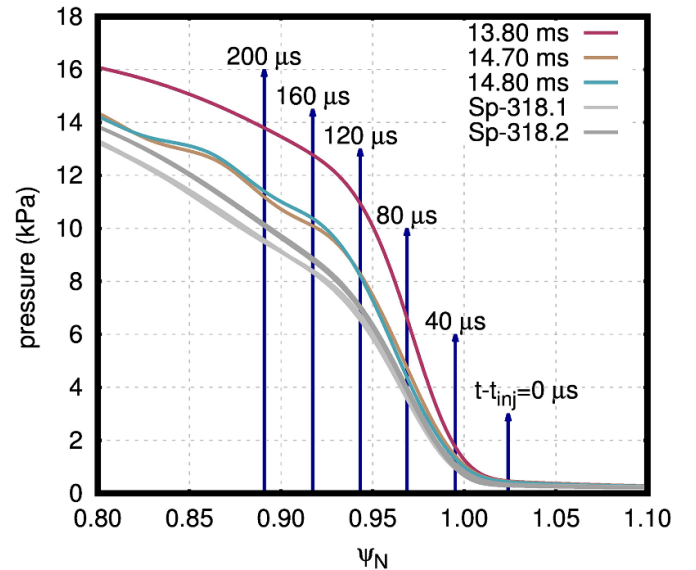


Figure 8. Outer midplane pressure profiles before (in dark red) and after Tr-08-14ms (in yellow and green), and after Sp-318.1 and Sp-318.2 (in grey and dark grey, respectively). The post-ELM profiles for the spontaneous ELMs have lower pedestals than Tr-08-14ms. The position of the pellet in terms of the normalised poloidal flux is also shown for six different points in time.

is $80 \mu\text{s}$. The outer midplane pre- and post-ELM pressure profiles for Tr-08-14ms, and post-ELM profiles for Sp-318.1 and Sp-318.2 are shown in figure 8. The position of the pellet in terms of ψ_N for six different time points is also plotted. It is observed that the post-ELM profiles for the spontaneous ELMs considered here have lower pedestals than the pellet-triggered ELM.

As the pellet enters the confined region, the growth rates of the high- n perturbations begin to increase rapidly. This increase takes place due to the excitation of ballooning modes in the HFS and LFS regions. In the absence of pellet injection, ballooning modes are localised at the LFS because the magnetic field curvature (which stabilises ballooning modes and always points to the centre of the device) is parallel to the pressure gradient (which destabilises ballooning modes and always points to the magnetic axis) in the LFS, and it is anti-parallel to ∇p in the HFS. However, in the presence of pellet injection, as the pellet enters the confined region there is a significant local pressure increase, as described in section 2.2. The pressure gradient is both parallel and anti-parallel to the pellet trajectory (depending on which side of the pellet position is being considered). The localised pressure gradient to the right of the pellet position is parallel to the field line curvature and, therefore, may excite ballooning modes in the HFS.

The time of $\max(P_{\text{outer div}})$ is $t_0 = 14.22$ ms. Seven different times with an equal spacing of 0.04 ms are chosen with respect to the time of maximum outer divertor incident power $t - t_0 = -0.22 : 0.04 : 0.02$ ms in order to analyse how the edge magnetic topology changes with pellet injection. For this pellet-triggered ELM, Poincaré plots at the times mentioned before are shown in figure 9. At $t - t_0 = -0.22$ ms, i.e. at the time of pellet injection, the edge magnetic field is axisymmetric. Forty microseconds later, as the pellet crosses the separatrix (see figure 8), the magnetic topology outwards of $\psi_N \approx 0.90$ has become non-axisymmetric, but no reconnection has yet taken place.

In the next time slice ($t - t_0 = -0.14$ ms, i.e. $t = t_{\text{inj.}} + 0.08$ ms) the pellet has reached the radial position of $\psi_N \approx 0.96$. At this point, some magnetic reconnection has taken place and a stochastic edge is formed from the last closed flux surface until the pellet position. This time slice is the last to clearly represent the pellet-induced magnetic perturbation. The following time slices ($t \geq t_{\text{inj.}} + 0.12$ ms) feature a stochastic magnetic topology mostly caused by the MHD response to the pellet perturbation. This can be distinguished because the stochastic layer has penetrated significantly further inwards than the pellet has. Namely, at $t = t_{\text{inj.}} + 0.12$ ms the pellet location is $\psi_N \approx 0.95$ while the stochastic region has penetrated until $\psi_N \approx 0.90$. Similarly to the spontaneous ELM crash (figure 5), field lines at $\Psi_N \gtrsim 0.87$ exhibit a very short connection length to the divertor targets close to the time of maximum divertor heat flux.

The energy expelled by the pellet-triggered ELM is then non-axisymmetrically deposited on the divertor targets. Similar to the spontaneous ELM shown before, the pellet-triggered ELM deposits more energy (roughly twice) onto the outer divertor than the inner divertor. This is in fact a feature of all the pellet-triggered ELMs described in the present work. At the time of $\max(P_{\text{outer div}})$, $t_0 = 14.22$ ms, the heat flux onto the outer target at different toroidal angles is shown in figure 10. This profile shows two distinct regions with large heat deposition: one located in the original strike-line position (~ 2 cm) and a secondary deposition region that varies in intensity depending on the toroidal angle (peaking in intensity at $\phi \approx 240^\circ$). This non-axisymmetric secondary deposition

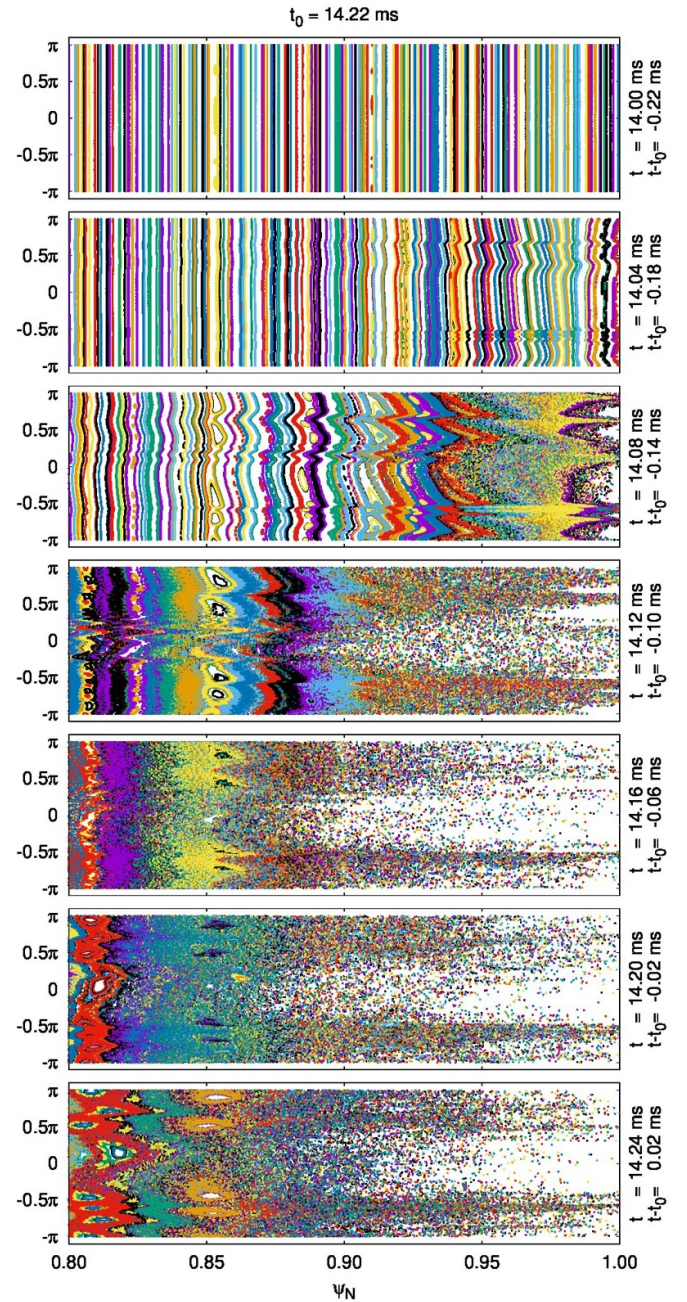


Figure 9. Seven Poincaré plots at different times with respect to the time of maximum $P_{\text{outer div}}$, $t_0 = 14.22$ ms. From top to bottom, the chosen times are separated by 0.04 ms. The initially axisymmetric topology (top panel) becomes perturbed when the pellet crosses the separatrix (second panel), and later starts to reconnect (third panel). The ELM is then triggered (fourth panel), and ultimately the region with short connection length (white region) penetrates until $\psi_N \approx 0.87$ (bottom panels).

region rotates slowly along the toroidal direction and is closely linked to lobe structures.

As stated before, the wetted area at the time of maximum outer divertor incident power is $A_{\text{wet}} \approx 0.95$ m² for the spontaneous ELM (Sp-318.1). On the other hand, for the pellet-triggered ELM analysed in this section (Tr-08-14ms), the wetted area at t_0 is reduced by approximately 31% with respect

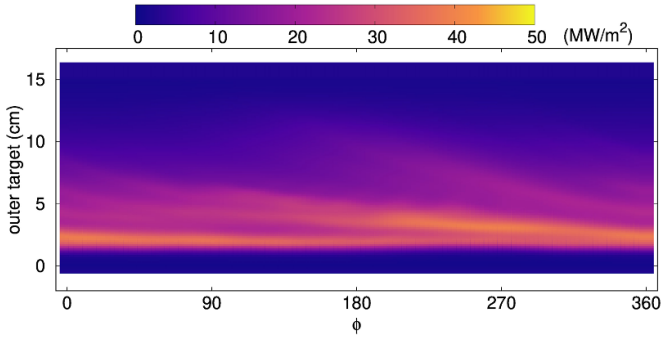


Figure 10. Outer divertor heat flux profile at the time of maximum $P_{\text{outer div}}$, $t_0 = 14.22$ ms. The footprint corresponding to two main strike lines can be observed. The wetted area at this time point is $A_{\text{wet}} \approx 0.65$ m², which is $\sim 31\%$ lower than the spontaneous ELM Sp-318.1.

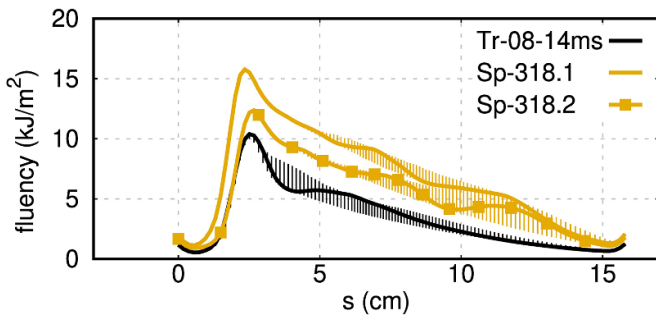


Figure 11. Outer divertor ELM fluence for two spontaneous ELMs (Sp-318.1 and Sp-318.2) and an ELM triggered by a pellet containing 0.8×10^{20} D atoms (Tr-08-14ms). The wider wetted area associated to the spontaneous ELMs with respect to the triggered ELM can be observed.

to Sp-318.1, i.e. $A_{\text{wet}} \approx 0.65$ m². Despite the simplified SOL model used for the present work, we find that the wetted area for Tr-08-14ms is significantly reduced with respect to Sp-318.1, as evidenced by comparing figures 6 and 10. This observation, which is undesirable for pellet-ELM triggering as a control method, is qualitatively consistent with experimental observations [7].

4.3. Comparison of Sp-318 and Tr-08-14ms

The ELM outer target energy fluence,

$$\varepsilon_{\text{target}}(s, \phi) = \int_{t_{\text{ELM}}} q(s, \phi, t) dt, \quad (1)$$

for Sp-318.1 (dark yellow lines), Sp-318.2 (dark yellow lines with symbols), and Tr-08-14ms (black lines) is shown in figure 11. The full lines for each ELM correspond to the target fluence profile at $\phi = 0$ and the small dots correspond to other toroidal angles. The figure clearly shows the reduction in wetted area between the pellet-triggered ELM and the spontaneous ELM that was described in the previous paragraph.

The second spontaneous ELM, Sp-318.2, is included so that the fluence of a spontaneous ELM borne out of

self-consistent seed perturbations can also be observed. There is a reduction in the peak target fluence for the triggered ELM with respect to both spontaneous ELMs: Sp-318.1 and Sp-318.2. The second spontaneous ELM (full lines with symbols in figure 11) shows a lower peak fluence with respect to the first spontaneous ELM. This happens because Sp-318.1 is borne out of noise-level perturbations, while Sp-318.2 is borne out of self-consistent seed perturbations [11]. The reduction of peak target fluence between Tr-08-14ms and Sp-318.1 may be attributed to the lower ELM size of the triggered ELM ($\sim 4.4\%$) with respect to the spontaneous ELM ($\sim 7.8\%$). In the multi-machine scaling for the peak parallel energy fluence from reference [45], the ELM size goes into the scaling as $\Delta E_{\text{ELM}}^{0.52}$. Scaling the peak target fluence of the spontaneous ELM (~ 15.5 $\frac{\text{kJ}}{\text{m}^2}$) with the pellet-triggered ELM size results in a peak value of $15.5 \frac{\text{kJ}}{\text{m}^2} \left(\frac{4.4}{7.8}\right)^{0.52} \approx 11.5 \frac{\text{kJ}}{\text{m}^2}$, which is comparable to the peak fluence of ~ 10.5 $\frac{\text{kJ}}{\text{m}^2}$ measured for the pellet-triggered ELM. The remaining difference is attributed to the fact that the pedestal pressure right before the spontaneous ELM is larger than before the pellet-triggered ELM, as may be observed from figure 1.

A side-by-side comparison between Sp-318.1 and Tr-08-14ms in terms of the heat fluxes to the inner and outer divertors, and of the non-axisymmetric topologies (portrayed by Poincaré maps in real space with a colour scale that reflects the temperature at the starting position of the magnetic field line associated with each point of the Poincaré map) is shown in figure 12 at the times of maximum incident power to the outer divertor. The wider wetted area and higher peak values of the spontaneous ELM (left), with respect to the pellet-triggered ELM (right), can be clearly observed. It appears that the reason behind the wider wetted area in the spontaneous ELM is a larger number of secondary strike lines, which carry thermal energy from the bulk plasma, across the magnetic separatrix, towards the divertor targets. A slight difference is also observed in terms of the initial temperature of the magnetic field lines traced for the Poincaré map—the stochastic region seems to reach further inwards for the spontaneous ELM than for the pellet-triggered ELM.

4.4. Mode structures

In this subsection we present different quantities related to the structure of the modes involved in the ELM crashes described before, Sp-318.1 and Tr-08-14ms. In particular, we pick the time point related to the peak incident power onto the outer divertor for each event (the same times as figures 6 and 10 for the spontaneous and pellet-triggered ELMs, respectively). The density (in 10^{20} m⁻³), poloidal magnetic flux (in Wb), and the total plasma temperature (in eV) for the spontaneous ELM and the pellet-triggered ELM are shown in the top and bottom rows of figure 13. All plots also indicate, with grey lines, surfaces with different values of normalised poloidal flux ($\psi_N = [0.8, 0.9, 1.0, 1.1]$). The perturbations in question relate to the non-axisymmetric component of the total quantities. For example, temperature may be decomposed into an axisymmetric component $T_{n=0}$ and a non-axisymmetric component

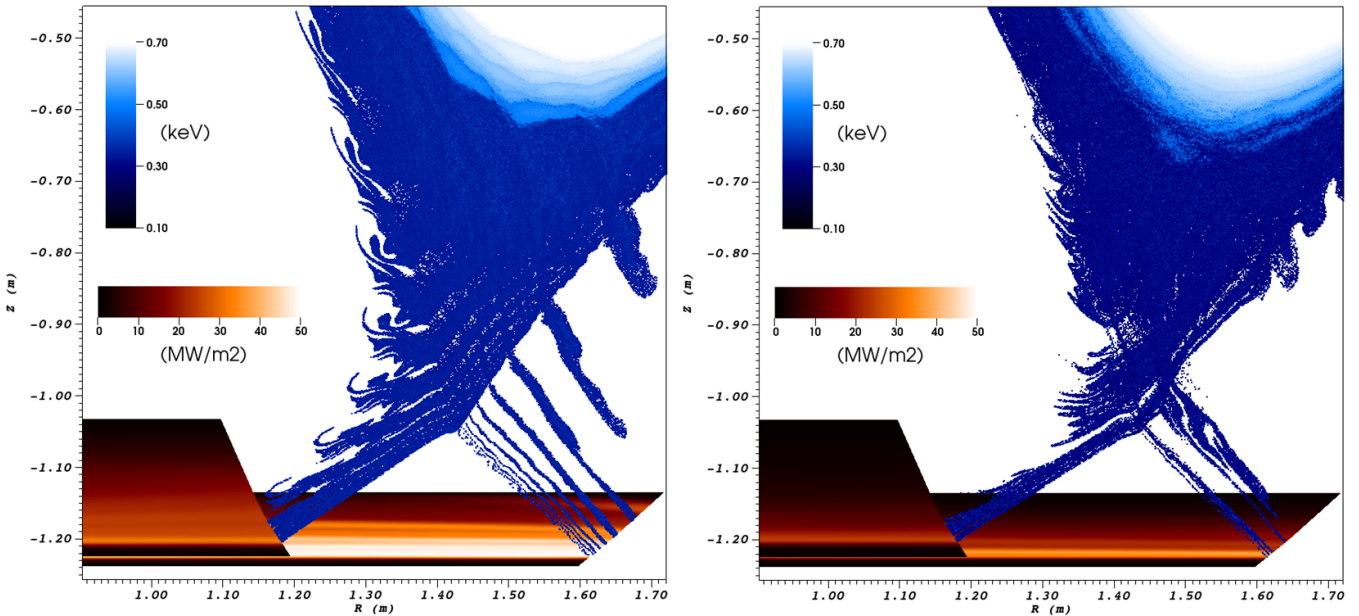


Figure 12. Heat flux to the inner and outer divertor targets (MW m^{-2}) and real space Poincaré plots with a colour scheme that reflects the temperature (keV) at the starting location of the associated magnetic field lines for (left) Sp-318.1 and (right) Tr-08-14ms at the respective times of maximum outer divertor incident power. The low number of secondary strike lines of the pellet-triggered ELM can explain the narrower wetted area when compared to the spontaneous ELM that splits the strike line into several secondary strike lines.

$T_{n>0}$ to form the total temperature $T = T_{n=0} + T_{n>0}$, where n is the toroidal mode number. For the pellet-triggered ELMs, $T_{n>0} = \sum_{n=1}^{12} T_n$. As mentioned before, the dominant toroidal mode number for the pellet-triggered ELM crash is the $n = 1$ helical perturbation since this is directly excited by the pellet injection while for the spontaneous ELM crash it is the $n = 3$ PB mode. Spontaneous ELM crashes in AUG exhibit a clear dependency of the dominant toroidal mode number onto the value of the safety factor close to the separatrix, q_{95} , that was also qualitatively reproduced with JOREK [46]. This difference alone indicates that different physical processes are involved in the destabilisation and the non-linear dynamics of the two different events.

The spontaneous ELM Sp-318.1 (top row), clearly features PB structures inside the last closed flux surface. Ballooning structures predominantly on the LFS are observed in all quantities, but particularly in the perturbations to the poloidal magnetic flux (centre plot). The spontaneous ELM clearly features large temperature fluctuations on the SOL, which maintain the structure observed in the Poincaré plot of figure 12 (left). Interestingly, the pellet-triggered ELM shows faint hints of PB structures (the most obvious indications are shown in the HFS density perturbations enclosed between $\psi_N \approx 0.9$ and 1.0). It is unclear whether this is due to the large pellet-induced perturbation, which may alter or mask the natural structure of said modes, or due to fundamentally different perturbations related to the pellet-triggered ELM.

Several differences may be observed in the spatial structures of the modes related to the spontaneous and pellet-triggered ELMs. One of the most obvious differences is the large density perturbation created by the pellet ablation in figure 13 (bottom, left). Overall, the density perturbations present in the volume enclosed between $\psi_N \approx 0.8$ and

1.0 are larger for Tr-08-14ms than for Sp-318.1. The large (in size and amplitude) density perturbation induced by the pellet ablation is observed to influence the size of the perturbations related to the ELM crash, i.e. the density perturbations observed for the pellet-triggered ELM appear to be larger than those for the spontaneous ELM. This is perhaps most clearly evidenced by comparing the plots of the magnetic flux perturbations (top and bottom centre plots). Indeed from these plots, the difference in the dominant toroidal mode numbers between the spontaneous and pellet-triggered ELMs may be inferred. The temperature perturbations obtained for the pellet-triggered ELM appear to be generally weaker than those for the spontaneous ELM. These perturbations also demonstrate the structures observed in figure 12 (right). Finally, it is interesting to note that while the spontaneous ELM features weak (density, flux, and temperature) perturbations in the confined region near the magnetic X-point, the pellet-triggered ELM shows large perturbations (particularly of density and flux) in this region.

5. Comparison between spontaneous and pellet-triggered ELMs

Having shown in detail the differing dynamics of a representative spontaneous and pellet-triggered ELM, the attention is now turned towards comparing several key quantities between more simulations of spontaneous and pellet-triggered ELMs. At first, in section 5.1, a comparison in terms of the thermal energy losses caused by the different types of ELMs is described. Later, an analysis of the toroidal mode spectrum is discussed in section 5.2. Finally, in section 5.3, we study and detail how the respective heat fluxes and resulting energy fluences compare.

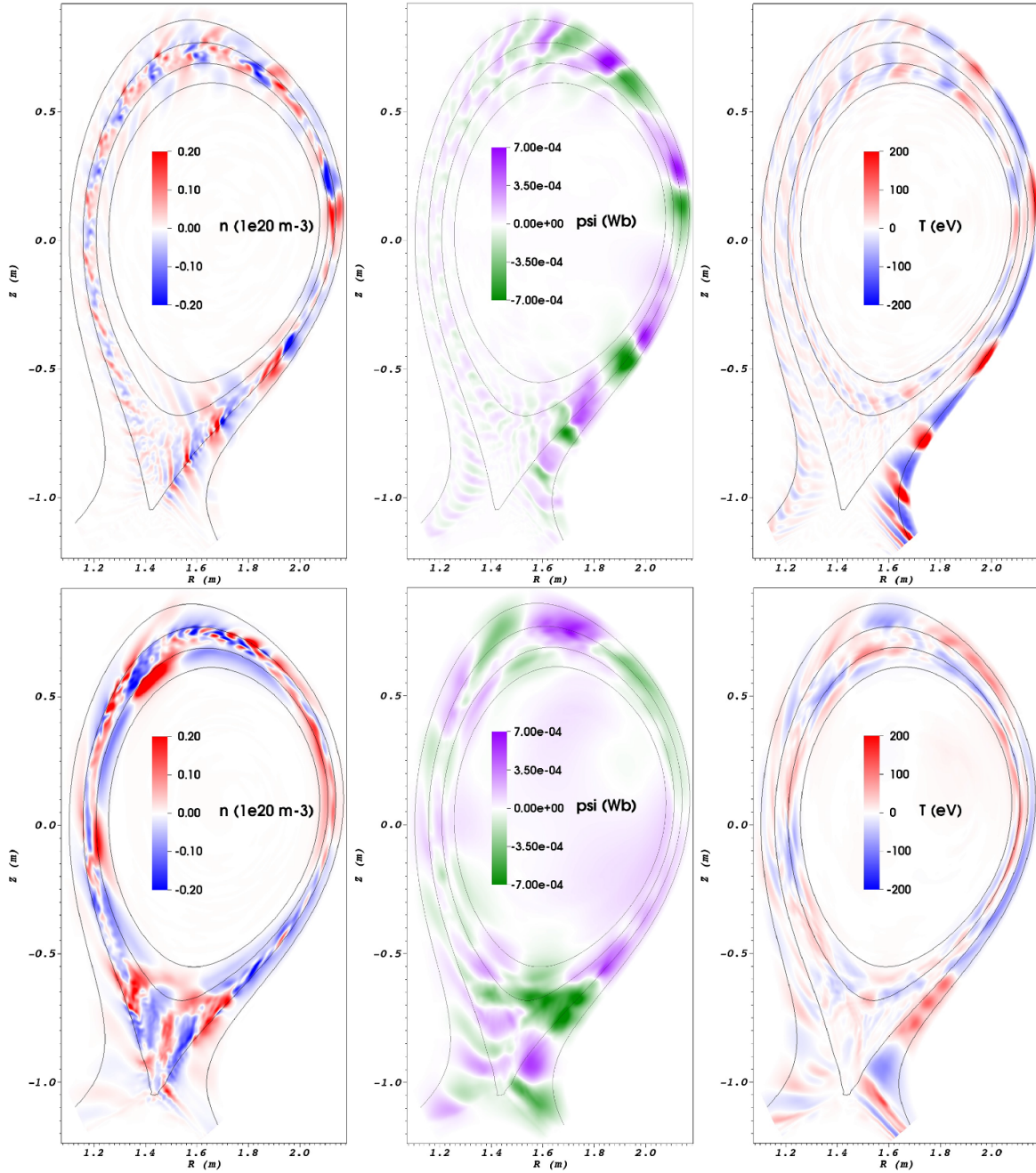


Figure 13. Density (in 10^{20} m^{-3}), flux (in Wb), and temperature (in eV) perturbations for Sp-318.1 (top row), and for Tr-08-14ms (bottom row), at the respective times of maximum $P_{\text{outer div}}$. Grey lines in all plots indicate surfaces with normalised poloidal flux of $\psi_N = [0.8, 0.9, 1.0, 1.1]$. The mode structures for the spontaneous ELM feature PB modes more clearly than for the triggered ELM. The spatial dimensions of the modes are markedly larger for Tr-08-14ms than for Sp-318.1.

5.1. ELM-induced thermal energy losses

The energy released by the different ELMs (ΔW_{ELM}) and the relative ELM size (ΔE_{ELM}) are plotted against the pre-ELM pedestal stored energy (pre-ELM $W_{\text{th,ped}}$ is obtained with a volume integral from $\psi_N = 0.9$ to the separatrix) in figures 14(a) and (b), respectively. In said figure, the pentagons represent ELMs triggered by pellets containing 0.8×10^{20} D atoms, while the triangles correspond to pellets with 1.5×10^{20} D atoms. Squares and circles represent spontaneous

ELMs, and different colours are used for simulations with different sets of toroidal mode numbers included, e.g. dark yellow for $n = 0-3-18$. The circles denote the first ELM simulated for a given series of ELM crashes, while the squares denote the subsequent ELMs, which are borne out of self-consistent seed perturbations (the reason for this differentiation is described in section 3.2).

As a first observation, we point out the fact that all spontaneous ELMs borne out of self-consistent seed perturbations, i.e. represented by squares in figure 14, have similar absolute

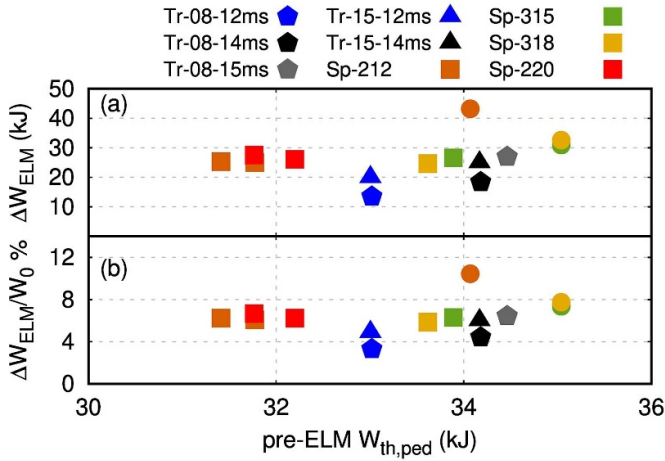


Figure 14. Energy losses (a) and relative ELM size (b) of spontaneous (circles denote the first simulated ELM in a series, while squares represent the subsequent ELMs) and pellet-triggered ELMs (pentagons for pellets containing 0.8×10^{20} D atoms and triangles for pellets containing 1.5×10^{20} D atoms). Spontaneous ELMs borne out of self-consistent seed perturbations have similar absolute and relative ELM sizes. Early enough injection can reduce the ELM size with respect to spontaneous ELMs.

and relative ELM sizes. The first spontaneous ELMs in a given series of simulated ELMs (circles in figure 14) have larger thermal energy losses, with respect to the other spontaneous ELMs, because they are borne out of lower amplitude seed perturbations [11].

Considering the pellet-triggered ELMs alone, it is observed that pellets (small and large) injected at an earlier time (lower pre-ELM $W_{th, ped}$) result in smaller ELM losses with respect to similar-sized pellets injected at a later time (larger pre-ELM $W_{th, ped}$). For example, the blue pentagons have a smaller absolute, and relative, ELM size than their black and grey counterparts. For a given injection timing, the larger pellets induce a slightly larger triggered ELM size (triangles lie above pentagons for constant pre-ELM $W_{th, ped}$).

Comparing the spontaneous and pellet-triggered ELMs reveals only a small difference in ELM size, and such difference is most pronounced when comparing the earliest pellet injection. With the large pellet, ELMs may be triggered at even earlier injection times ($t_{inj} \geq 8$ ms), but the small pellet is able to trigger ELMs only if $t_{inj} \geq 12$ ms (further details found in reference [13]). Finally, it is worth pointing out that the small pellet injected at the latest time (only 1 ms before the spontaneous ELM crash would take place) triggers an ELM with a comparable size to the spontaneous ELMs simulated in these studies. The small differences between spontaneous and pellet-triggered ELMs appear to be in agreement with experimental observations at AUG [12].

We observe that spontaneous ELMs typically expel more thermal energy than pellet-triggered ELMs, except when the pellet is injected very briefly before the spontaneous ELM would appear, i.e. at roughly the same pedestal conditions. For the pellet-triggered ELMs simulated, we also observe that

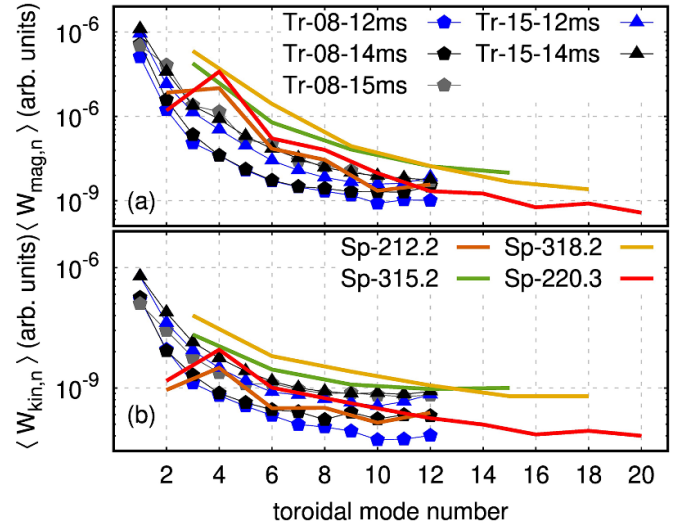


Figure 15. Time averaged magnetic (top) and kinetic (bottom) energy spectrum for spontaneous (full lines) and pellet-triggered ELMs (symbols). The average is performed over 0.5 ms starting from $t(E = E_{mag,max}) - 0.1$ ms.

large pellets induce slightly larger thermal energy losses than ELMs triggered by small pellets injected at the same time.

5.2. Toroidal mode spectrum

Time-averaged spectra of the perturbations associated to the spontaneous and pellet-triggered ELMs are shown in figure 15 for the different toroidal mode numbers. The averaging is performed over 0.5 ms starting 0.1 ms before the time at which $\sum_{n>1}^{n_{max}} E_{mag,n}$ is maximised. Excluding $n = 1$ from the summation is done in order to separate, to some extent, the pellet-induced perturbation from the pellet-triggered ELM crash.

For all the pellet-triggered ELMs, the most energetic perturbation is the $n = 1$, followed by the next low n modes. Such result appears to be in agreement with experimental observations at JET [47] and is consistent with previous pellet-triggered ELM simulations with JOEAK [27, 34]. The energy spectrum of the pellet-triggered ELMs is broad since the pellet-induced helical perturbation is described by low- n modes, and it excites high- n ballooning modes (as described in section 4.2). On the other hand, for the spontaneous ELMs simulated for this study, the most unstable toroidal mode numbers during the ELM crash are 2,3,4 (consistent with experimental observations at AUG [48]), and the broad mode spectrum is explained by the three-wave coupling of low-to-high toroidal mode numbers [37]. Even for spontaneous ELM simulations which include the $n = 1$ mode (not shown), the most energetic perturbation is not the $n = 1$, but an $n = 3$ PB mode.

In order to show a direct comparison between pellet-triggered and spontaneous ELMs, a comparison between two time-evolving spectra is presented. For the individual ELMs, we choose the same ELMs as those for section 4 (Sp-318.1 and Tr-08-14ms). In figure 16 we show the time-evolving magnetic energy spectrum, which highlights the different

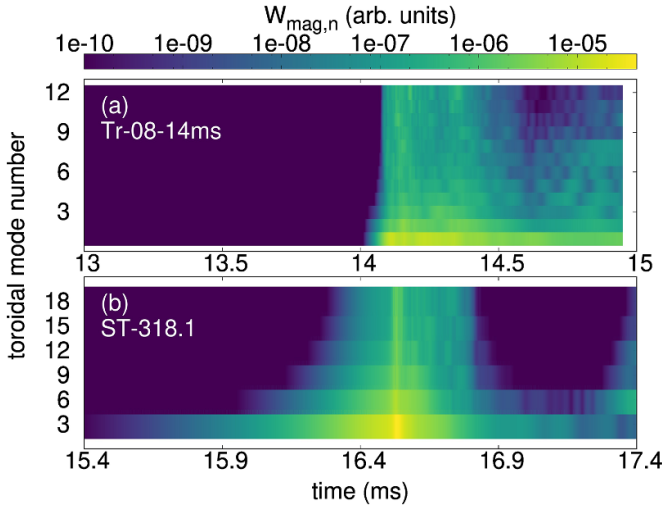


Figure 16. Time-evolving magnetic energy spectrum for Tr-08-14ms (a) and Sp-318.1 (b). The time ranges chosen correspond to those of figures 3 and 7, respectively, and the colour map is in logarithmic scale.

dynamics for these two different types of events. In particular, the precursor phase of the spontaneous ELM (figure 16(b)) is clearly visible for roughly 1 ms prior to the ELM onset. On the other hand, the energy of the non-axisymmetric perturbations related to the pellet-induced perturbation and pellet-triggered ELM become abruptly excited roughly 0.1 ms after the pellet is injected. These different temporal dynamics can also be clearly inferred from figures 5 and 9. It is observed that the time required for $E_{\text{mag},n>0}$ to decay in amplitude is shorter for the spontaneous ELM than for the pellet-triggered ELM, in particular for $E_{\text{mag},n=1}$. This is partly related to a (2, 1) tearing mode being excited by the pellet-triggered ELM that is not of interest to this study. However, more interestingly, the increased pedestal density remaining after the pellet injection compared to the spontaneous post-ELM plasma reduces the radial electric field rendering it less efficient in stabilizing the medium- n and high- n peeling ballooning modes on a short time scale (recall that $E_r \sim \nabla p_i / n_e$ and, therefore, higher density means lower E_r).

5.3. Heat-flux and energy fluence comparison

An important metric for the comparison between the simulated spontaneous and pellet-triggered ELMs is the dynamical heat deposition profiles. As it was mentioned in section 4.1, the splitting of the heat load between inner and outer divertor does not match experimental observations due to the simplified SOL modelling. Nevertheless, it is still of interest to analyse the differences and similarities between divertor heat fluxes for spontaneous and pellet-triggered ELMs. The outer divertor incident power, $P_{\text{outer div}}$, is plotted for several spontaneous and triggered ELMs in figure 17. The time axis has been shifted such that the maximum of $P_{\text{outer div}}$ is at 0.2 ms for all ELMs. The importance of keeping a sufficiently high toroidal resolution is highlighted by the peak divertor incident

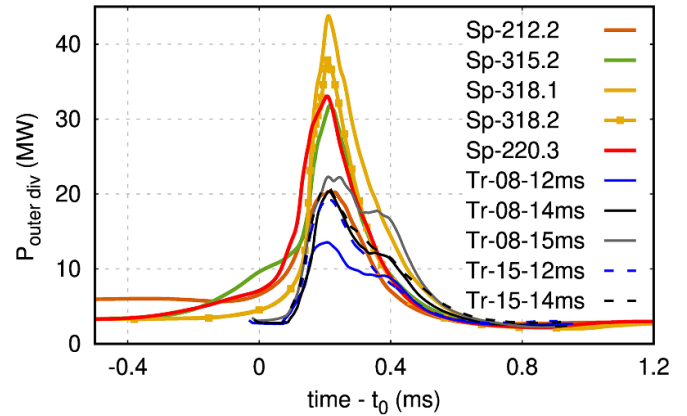


Figure 17. Power incident on the outer divertor for several pellet-triggered ELMs (blue, black, and grey) and spontaneous ELMs. The temporal dynamics for simulations with $n = 0-2-12$ are too slow due to too low toroidal resolution. Simulations with $n_{\text{max}} \geq 15$ are properly converged.

power shown between different spontaneous ELMs. In particular, Sp-212.2 shows a peak divertor incident power roughly half that of Sp-315.2 or Sp-318.2¹¹. If we compare the pellet-triggered ELMs with Sp-212.2 we observe very similar peak divertor incident powers. However, if we compare the pellet-triggered ELMs with the more realistic spontaneous ELMs (those with sufficient toroidal resolution), we observe a clear reduction in the peak divertor incident power by means of pellet injection. Indeed the latter conclusion is the one that should be drawn.

At this stage it is worth pointing out that we have performed one simulation comparable to Tr-08-14ms, but with even higher toroidal mode numbers ($n = 0-1-18$), and we observe a small ($\sim 7\%$) reduction of the peak divertor incident power with respect to the value in figure 17. Therefore, we consider the pellet-triggered ELM simulations presented in this paper to be properly converged. A more systematic convergence study, which would consider even higher toroidal resolution, is not affordable for us at present.

From figure 17 it can be observed that injecting a pellet with 0.8×10^{20} D atoms at 12 ms leads to a much reduced peak divertor incident power with respect to the other four pellet-triggered ELMs. These remaining four pellet-triggered ELMs have similar peak $P_{\text{outer div}}$, which is weaker than all the spontaneous ELMs (excluding Sp-212.2 which is not yet properly converged). This significant reduction in the peak divertor incident power does not translate directly to the target fluence (figure 11) because of the narrower deposition area intrinsic to the pellet-triggered ELMs.

We choose the time of maximum outer divertor incident power to clearly show the heat flux profile narrowing for the pellet-triggered ELMs. Figure 18 shows the heat flux profile at $\phi = 0$ (pellet injection angle) as solid or dashed lines, and at all other toroidal angles as small coloured points. This

¹¹ We consider the simulations with $n = 0-3-18$ to be converged because they show only $\sim 3\%$ lower peak outer divertor incident power with respect to simulations with $n = 0-3-30$.

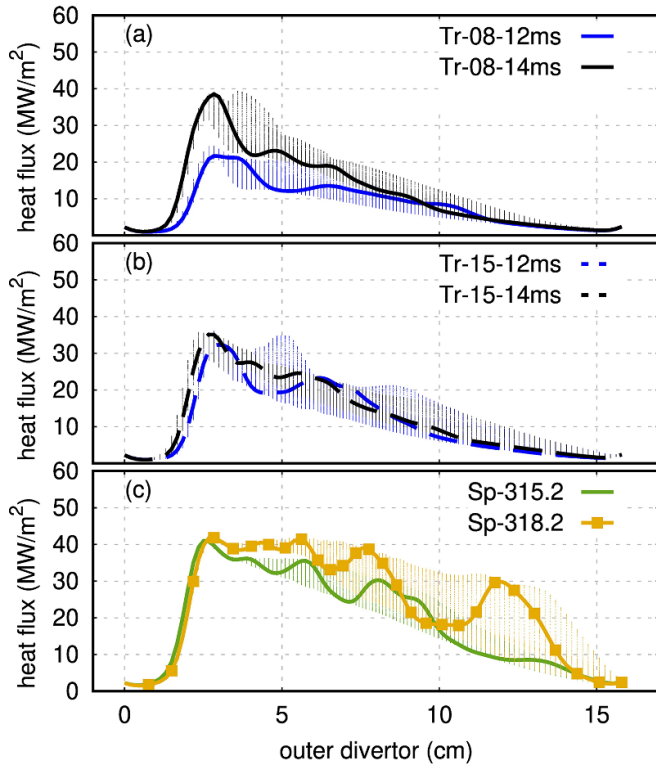


Figure 18. Outer divertors heat flux profile at $t = t(\max(P_{\text{outdiv}}))$ for pellet-triggered ELMs (small and large pellets injected at 12 and 14 ms) and spontaneous ELMs. Pellet-triggered ELMs (a) and (b) show a narrower deposition profile with respect to spontaneous ELMs (c).

is done for six different ELMs: four pellet-triggered ELMs (triggered by a small pellet (a) and by a large pellet (b)) and two spontaneous ELMs (c). The pellet-triggered ELMs show much narrower heat flux deposition profiles with respect to the spontaneous ELMs. It is interesting to note that the non-axisymmetry observed for the pellet-triggered ELMs is most prominent in the vicinity of the maximum heat flux ($s \approx 3$ cm), while for the spontaneous ELMs it is most evident away from the maximum.

Comparing the heat flux profiles between different types of ELMs for a single time point clearly evidenced the broader wetted area associated to spontaneous ELMs with respect to pellet-triggered ELMs. As described in the discussion at the beginning of section 4.3, the second spontaneous ELMs in a given series have lower fluence, and therefore heat fluxes, than the first ELMs in a series (borne out of arbitrary seed perturbations). These ELMs, Sp-315.2 and Sp-318.2 in figure 18(c), have comparable peak heat fluxes to the pellet-triggered ELMs, but a wider wetted area. However, a more relevant metric is the peak of the time-integrated heat flux deposition profiles. Such time integration is considered through the duration of the ELM crash. This is precisely the target fluence, ε , defined in equation (1). For each of the simulations presented here, but excluding those with an insufficient toroidal resolution (Sp-212), we show the peak target fluence as a function of the pre-ELM pedestal stored thermal energy in figure 19. Following the convention from figure 14, spontaneous ELMs

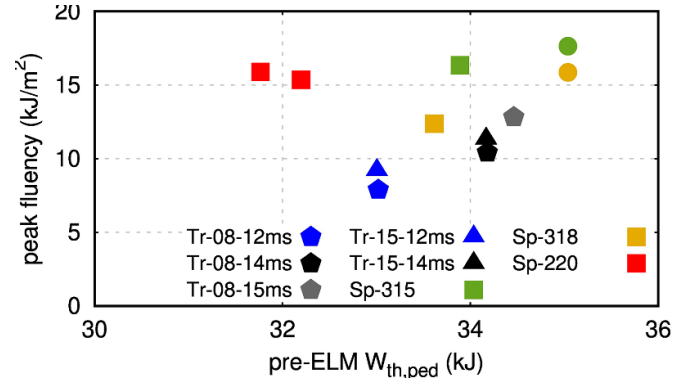


Figure 19. Peak fluence for spontaneous (in circles and squares) and pellet-triggered ELMs (in pentagons for small pellets and triangles for large pellets). Pellet-triggered ELMs show a moderate decrease in the peak fluence with respect to all but one spontaneous ELMs.

are symbolised with circles (for the first ELM in a series) and with squares (for the subsequent ELMs in a series), and pellet-triggered ELMs are symbolised with pentagons and triangles for pellets with 0.8×10^{20} and 1.5×10^{20} D atoms, respectively.

Four out of five pellet-triggered ELMs show a decrease in the peak target fluence when compared against the converged spontaneous ELMs. In particular, when the ELM crash is triggered sufficiently early in the ELM cycle the peak fluence can be clearly reduced (Tr-08-12ms and Tr-08-14ms). Furthermore, the pellet size is not observed to play an important role in the peak target fluence. The only pellet-triggered ELM that does not see a reduction of the peak fluence corresponds to pellet injection only one millisecond before the spontaneous ELM would take place, Tr-08-15ms. For this ELM, the pre-ELM pedestal stored thermal energy is comparable to the rest of the spontaneous ELMs. The reduction in peak fluence between the second spontaneous ELMs in a given series (squares in figure 19) and the pellet-triggered ELMs (pentagons and triangles in figure 19) may seem in contradiction to the observation of similar peak heat fluxes in figure 18. However, this happens because the spontaneous ELMs cause higher heat fluxes for longer times due to the precursor phase (which can be clearly observed in figures 16 and 17) and, therefore, increase the peak fluence which comes from integrating the heat flux in time.

6. Conclusions

We present detailed comparisons between spontaneous and pellet-triggered ELMs simulated with JOEUK. The spontaneous ELMs simulated for this study extend recent work of modelling full type-I ELM cycles [11]. Exploiting recent code optimizations, we perform computations at higher toroidal resolution such that simulations are now converged not only in terms of 0D quantities like the energy losses, but also regarding time scales of the crashes and peak divertor heat fluxes. The pellet-triggered ELMs are simulated by introducing pellets at different stages of the pedestal build up. This novel approach at

simulating pellet-triggered ELMs has qualitatively reproduced the lag-time that exists in metal walled devices like AUG-W and JET-ILW as thoroughly described in reference [13]. Pellets of two experimentally accessible sizes are considered. All the simulations presented have been performed with realistic plasma flows (ion velocity comprised of ExB plus diamagnetic flow, but neglecting higher order terms like the polarisation drift). For the spontaneous ELMs, taking into account these realistic plasma flows is a necessary requirement to recover the cyclical dynamics [11, 43]. For the pellet-triggered ELMs, these simulations consider, for the first time, such realistic plasma flows. Additionally, the pellet-triggered ELMs presented here push the previous state-of-the-art further by considering realistic values for the pedestal resistivity.

At first, a detailed analysis of the non-linear dynamics for one spontaneous ELM and one pellet-triggered ELM was presented to describe the similarities and differences between the two events. In particular, the spontaneous ELMs shown in this work feature a precursor phase characterised by low toroidal mode numbers that lasts roughly one millisecond, while the pellet-triggered ELMs are excited abruptly (~ 0.1 ms) after the pellet-injection. The pellet-triggered ELM is excited approximately when the pellet has penetrated slightly beyond the maximum pressure gradient region of the pedestal, which is consistent with experimental observations at AUG [14]. The pellet-triggered ELMs feature $n = 1$ as the dominant toroidal mode number, while the spontaneous ELMs feature PB modes with toroidal mode numbers of $n = 2, 3, 4$ as the dominant modes during the ELM crash. Both results are in agreement with experimental observations [47, 48]. The dominant $n = 1$ mode in the pellet-triggered ELM simulations is associated with a helical perturbation directly induced by the pellet injection, and it is shown to have important implications onto the heat flux arriving at the divertor tiles. For the spontaneous ELMs, on the other hand, the dominant mode numbers are associated to the governing influence of low- n to medium- n PB modes during the ELM crash.

A simplified SOL model and a single fluid description are used, implying that some of the physics relevant for energy deposition onto the divertor targets are neglected. Nevertheless, we find that the wetted area associated with spontaneous ELMs is larger than for pellet-triggered ELMs in qualitative agreement with experimental observations [7]. An explanation is suggested, by noting that the spontaneous ELMs split the primary strike line onto several secondary strike lines (arriving at different positions in the divertor target), which deposit the thermal energy expelled by the spontaneous ELM onto the area between the primary and secondary strike lines. On the other hand, pellet-triggered ELMs observe only the primary strike line together with a single secondary strike line that is associated with the $n = 1$ helical perturbation directly induced by the pellet injection. Most of the energy ejected by the pellet-triggered ELM is then deposited onto the smaller area between the primary and secondary strike lines.

A systematic comparison between several pellet-triggered and spontaneous ELMs is presented showing that large pellets induce energy losses slightly larger than those obtained with smaller pellet injection. We also observe that ELMs triggered

by pellets injected closer in time to the spontaneous ELM onset lead to larger energy losses with respect to ELMs triggered at earlier times during the pedestal build up. This observation is correlated to the pre-ELM thermal energy stored in the pedestal which increases during the pedestal build-up. For the triggered ELMs simulated in this study, we see that injecting pellets with sufficient time before the spontaneous ELMs would appear leads to a reduction of the ELM energy loss (with respect to the spontaneous ELM size), while injecting too close to the spontaneous ELM onset leads to comparable energy losses.

Associated to the reduction in the thermal energy losses between spontaneous and pellet-triggered ELMs, the peak divertor incident power is reduced by means of pellet injection. Similarly, and despite the reduction in divertor wetted area related to the pellet-triggered ELMs, the peak fluence that reaches the divertor over the duration of the ELMs is observed to be lower for pellet-triggered ELMs with respect to spontaneous ELMs. This difference is most pronounced when comparing the ELMs triggered by pellet injection ~ 4 ms before the onset of the spontaneous ELM.

The work presented here is the first step at simulating pellet-triggered ELMs and comparing triggered and spontaneous ELMs at AUG. Having shown qualitative agreement on several fronts, future work will be devoted towards producing more quantitative comparisons by injecting pellets onto plasmas with pedestals of different characteristics. Additionally, we aim to investigate pellet pacing by periodic pellet injection into an ELM cycle simulation with a higher frequency than the natural ELM frequency.

Data availability statement

The data that support the findings of this study are available upon reasonable request from the authors.

Acknowledgments

The authors would like to thank Thomas Eich, Di Hu, and Davide Silvagni for fruitful discussions. This work has been carried out within the framework of the EUROfusion Consortium and has received funding from the Euratom research and training program 2014–2018 and 2019–2020 under Grant No. 633053. The views and opinions expressed herein do not necessarily reflect those of the European Commission. In particular, contributions by EUROfusion work packages Enabling Research (EnR) and Medium Size Tokamaks (MST) are acknowledged. We acknowledge PRACE for awarding us access to MareNostrum at Barcelona Supercomputing Center (BSC), Spain. Some of the simulations were performed using the Marconi-Fusion supercomputer.

ORCID iDs

A Cathey  <https://orcid.org/0000-0001-7693-5556>

M Hoelzl  <https://orcid.org/0000-0001-7921-9176>

S Futatani  <https://orcid.org/0000-0001-5742-5454>

References

- [1] Loarte A *et al* 2014 Progress on the application of ELM control schemes to ITER scenarios from the non-active phase to DT operation *Nucl. Fusion* **54** 033007
- [2] Labit B *et al* 2019 Dependence on plasma shape and plasma fueling for small edge-localized mode regimes in TCX and ASDEX upgrade *Nucl. Fusion* **59** 086020
- [3] Viezzer E 2018 Access and sustainment of naturally ELM-free and small-ELM regimes *Nucl. Fusion* **58** 115002
- [4] Evans T E *et al* 2008 RMP ELM suppression in DIII-d plasmas with ITER similar shapes and collisionalities *Nucl. Fusion* **48** 024002
- [5] Lang P T *et al* the ASDEX Upgrade Team 2004 ELM pace making and mitigation by pellet injection in ASDEX Upgrade *Nucl. Fusion* **44** 685
- [6] Baylor L R *et al* 2013 Reduction of edge-localized mode intensity using high-repetition-rate pellet injection in tokamak H-Mode plasmas *Phys. Rev. Lett.* **110** 245001
- [7] Wenninger R P, Eich T H, Huysmans G T A, Lang P T, Devaux S, Jachmich S, Köchl F and JET EFDA Contributors 2011 Scrape-off layer heat transport and divertor power deposition of pellet-induced edge localized modes *Plasma Phys. Control. Fusion* **53** 105002
- [8] Huysmans G T A and Czarny O 2007 MHD stability in x-point geometry: simulation of ELMs *Nucl. Fusion* **47** 659
- [9] Czarny O and Huysmans G 2008 Bezier surfaces and finite elements for MHD simulations *J. Comput. Phys.* **227** 7423–45
- [10] Hoelzl M *et al* 2021 The JOEKE non-linear extended MHD code and applications to large-scale instabilities and their control in magnetically confined fusion plasmas *Nucl. Fusion* **accepted**
- [11] Cathey A, Hoelzl M, Lackner K, Huijsmans G T A, Dunne M G, Wolfrum E, Pamela S J P, Orain F and Günter S 2020 Non-linear extended MHD simulations of type-I edge localised mode cycles in ASDEX Upgrade and their underlying triggering mechanism *Nucl. Fusion* **60** 124007
- [12] Lang P T *et al* 2014 ELM pacing and high-density operation using pellet injection in the ASDEX Upgrade all-metal-wall tokamak *Nucl. Fusion* **54** 083009
- [13] Futatani S, Cathey A, Hoelzl M, Lang P T, Huijsmans G T A and Dunne M, the JOEKE Team, the ASDEX Upgrade Team and the EUROfusion MST1 Team 2021 Transition from no-ELM response to pellet ELM triggering during pedestal build-up—insights from extended MHD simulations *Nucl. Fusion* **61** 046043
- [14] Kocsis G, Kálvin S, Lang P T, Maraschek M, Neuhauser J, Schneider W and Szepesi T 2007 Spatio-temporal investigations on the triggering of pellet induced ELMs *Nucl. Fusion* **47** 1166–75
- [15] Romanelli F and Kamendje R and on behalf of JET-EFDA Contributors 2009 Overview of JET results *Nucl. Fusion* **49** 104006
- [16] Lang P T *et al* 2008 Investigation of pellet-triggered MHD events in ASDEX Upgrade and JET *Nucl. Fusion* **48** 095007
- [17] Lang P T *et al* 2013 ELM pacing and trigger investigations at JET with the new ITER-like wall *Nucl. Fusion* **53** 073010
- [18] Lang P T *et al* 2015 ELM control at the L-H transition by means of pellet pacing in the ASDEX Upgrade and JET all-metal-wall tokamaks *Plasma Phys. Control. Fusion* **57** 045011
- [19] Hoelzl M, Hu D, Nardon E and Huijsmans G T A 2020 First predictive simulations for deuterium shattered pellet injection in ASDEX Upgrade *Phys. Plasmas* **27** 022510
- [20] Orain F *et al* 2013 Non-linear magnetohydrodynamic modeling of plasma response to resonant magnetic perturbations *Phys. Plasmas* **20** 102510
- [21] Pamela S J P *et al* JET Contributors 2017 Recent progress in the quantitative validation of JOEKE simulations of ELMs in JET *Nucl. Fusion* **57** 076006
- [22] Franck E, Hoelzl M, Lessig A and Sonnendrücker E 2015 Energy conservation and numerical stability for the reduced MHD models of the non-linear JOEKE code *ESAIM: M2AN* **49** 1331–65
- [23] Groebner R J, Burrell K H and Seraydarian R P 1990 Role of edge electric field and poloidal rotation in the L-H transition *Phys. Rev. Lett.* **64** 3015–8
- [24] Cavedon M *et al* 2017 Pedestal and Er profile evolution during an edge localized mode cycle at ASDEX Upgrade *Plasma Phys. Control. Fusion* **59** 105007
- [25] Rogers B N and Drake J F 1999 Diamagnetic stabilization of ideal ballooning modes in the edge pedestal *Phys. Plasmas* **6** 2797–801
- [26] Sauter O, Angioni C and Lin-Liu Y R 1999 Neoclassical conductivity and bootstrap current formulas for general axisymmetric equilibria and arbitrary collisionality regime *Phys. Plasmas* **6** 2834–9
- [27] Futatani S *et al* 2014 Non-linear MHD modelling of ELM triggering by pellet injection in DIII-D and implications for ITER *Nucl. Fusion* **54** 073008
- [28] Nardon E, Bécoulet M, Huysmans G and Czarny O 2007 Magnetohydrodynamics modelling of H-mode plasma response to external resonant magnetic perturbations *Phys. Plasmas* **14** 092501
- [29] Orain F *et al* 2017 Non-linear modeling of the plasma response to RMPs in ASDEX Upgrade *Nucl. Fusion* **57** 022013
- [30] Bécoulet M *et al* 2014 Mechanism of edge localized mode mitigation by resonant magnetic perturbations *Phys. Rev. Lett.* **113** 115001
- [31] Liu F, Huijsmans G T A, Loarte A, Garofalo A M, Solomon W M, Snyder P B, Hoelzl M and Zeng L 2015 Nonlinear MHD simulations of Quiescent H-mode plasmas in DIII-D *Nucl. Fusion* **55** 113002
- [32] Artola F J, Huijsmans G T A, Hoelzl M, Beyer P, Loarte A and Gribov Y 2018 Non-linear magnetohydrodynamic simulations of edge localised mode triggering via vertical position oscillations in ITER *Nucl. Fusion* **58** 096018
- [33] Huysmans G T A, Pamela S, van der Plas E and Ramet P 2009 Non-linear MHD simulations of edge localized modes (ELMs) *Plasma Phys. Control. Fusion* **51** 124012
- [34] Futatani S, Pamela S, Garzotti L, Huijsmans G T A, Hoelzl M, Frigione D and Lennholm M 2019 Non-linear magnetohydrodynamic simulations of pellet triggered edge-localized modes in JET *Nucl. Fusion* **60** 026003
- [35] Huijsmans G T A, Chang C S, Ferraro N, Sugiyama L, Waelbroeck F, Xu X Q, Loarte A and Futatani S 2015 Modelling of edge localised modes and edge localised mode control *Phys. Plasmas* **22** 021805
- [36] Hoelzl M, Guenter S, Wenninger R P, Mueller W-C, Huysmans G T A, Lackner K and Krebs I 2012 Reduced-magnetohydrodynamic simulations of toroidally and poloidally localized edge localized modes *Phys. Plasmas* **19** 082505
- [37] Krebs I, Hoelzl M, Lackner K and Guenter S 2013 Nonlinear excitation of low-n harmonics in reduced

- magnetohydrodynamic simulations of edge-localized modes *Phys. Plasmas* **20** 082506
- [38] Hoelzl M *et al* 2018 Insights into type-I ELMs and ELM control methods from JOEUK MHD simulations *Contrib. Plasma Phys.* **58** 518
- [39] Orain F *et al* 2019 Non-linear modeling of the threshold between ELM mitigation and ELM suppression by resonant magnetic perturbations in ASDEX Upgrade *Phys. Plasmas* **26** 042503
- [40] Lang P T *et al* 2003 A system for cryogenic hydrogen pellet high speed inboard launch into a fusion device via guiding tube transfer *Rev. Sci. Instrum.* **74** 3974–83
- [41] Holod I, Hoelzl M, Verma P S, Huijsmans G T A, Nies R and JOEUK Team 2020 New developments regarding the JOEUK solver and physics based preconditioner *J. Computat. Phys.* submitted
- [42] Eich T *et al* the ASDEX Upgrade Team 2005 Type-i ELM substructure on the divertor target plates in ASDEX Upgrade *Plasma Phys. Control. Fusion* **47** 815
- [43] Orain F *et al* 2015 Resistive reduced MHD modeling of multi-edge-localized-mode cycles in tokamak x -point plasmas *Phys. Rev. Lett.* **114** 035001
- [44] Jakubowski M W *et al* 2009 Overview of the results on divertor heat loads in RMP controlled h-mode plasmas on DIII-d *Nucl. Fusion* **49** 095013
- [45] Eich T, Sieglin B, Thornton A J, Faitsch M, Kirk A, Herrmann A and Suttrop W 2017 ELM divertor peak energy fluence scaling to iter with data from jet, mast and ASDEX Upgrade *Nucl. Mater. Energy* **12** 84
- [46] Mink A F, Wolfrum E, Dunne M, Hoelzl M, Maraschek M, Fischer R, Cavedon M, Harrer G F and Stroth U 2018 Scaling of the toroidal structure and nonlinear dynamics of ELMs on ASDEX Upgrade *Plasma Phys. Control. Fusion* **60** 125011
- [47] Poli F M, Lang P T, Sharapov S E, Alper B, Koslowski H R and 2010 Spectra of magnetic perturbations triggered by pellets in JET plasmas *Nucl. Fusion* **50** 025004
- [48] Mink F *et al* 2018 Nonlinear coupling induced toroidal structure of edge localized modes *Nucl. Fusion* **58** 026011