



SHILAP Revista de lepidopterología

ISSN: 0300-5267

ISSN: 2340-4078

avives@orange.es

Sociedad Hispano-Luso-Americana de Lepidopterología  
España

Nunes, J.

New records of Lepidoptera hostplants from Portugal (Insecta: Lepidoptera)  
SHILAP Revista de lepidopterología, vol. 49, núm. 193, 2021, -Marzo, pp. 5-19  
Sociedad Hispano-Luso-Americana de Lepidopterología  
Madrid, España

Disponible en: <https://www.redalyc.org/articulo.oa?id=45568011001>

- ▶ [Cómo citar el artículo](#)
- ▶ [Número completo](#)
- ▶ [Más información del artículo](#)
- ▶ [Página de la revista en redalyc.org](#)

redalyc.org

Sistema de Información Científica Redalyc

Red de Revistas Científicas de América Latina y el Caribe, España y Portugal  
Proyecto académico sin fines de lucro, desarrollado bajo la iniciativa de acceso  
abierto

# New records of Lepidoptera hostplants from Portugal (Insecta: Lepidoptera)

J. Nunes

## Abstract

141 new hostplants are added to 100 Lepidoptera species from mainland Portugal, as result of the author's fieldwork from 2010 to 2020. The majority of records are consistent with hostplant records from other European countries and confirm the wide range of polyphagy of some species.

KEY WORDS: Insecta, Lepidoptera, hostplant, Portugal.

## Novos registos de plantas hospedeiras de Lepidoptera em Portugal (Insecta: Lepidoptera)

## Resumo

141 novas plantas hospedeiras são adicionadas a 100 espécies de Lepidoptera em Portugal continental, como resultado do trabalho de campo do autor entre 2010 e 2020. A maioria dos registos é consistente com os registos de plantas hospedeiras em outros países europeus e confirmam a larga extensão de polifagia de algumas espécies.

PALAVRAS CHAVE: Insecta, Lepidoptera, planta hospedeira, Portugal.

## Nuevos registros de plantas nutricias de Lepidoptera en Portugal (Insecta: Lepidoptera)

## Resumen

Se añaden 141 nuevas plantas nutricias a 100 especies de Lepidoptera de Portugal continental, como resultado del trabajo de campo del autor de 2010 a 2020. La mayoría de los registros son consistentes con los registros de plantas nutricias en otros países europeos y confirman la amplia gama de polifagia de algunas especies.

PALABRAS CLAVE: Insecta, Lepidoptera, planta nutricia, Portugal.

## Introduction

Compared to other countries in Europe, Portuguese Lepidoptera, apart from leafminer species, lack published information about hostplants. This is easily noted on HOSTS database from Natural History Museum of London (ROBINSON *et al.*, 2010), where Portugal has far less records than for example the British Isles or Spain. In Portugal, the main contributions in recent years are CORLEY (2015), CORLEY *et al.* (2006, 2007, 2008, 2009, 2011, 2012a, 2012b, 2013, 2014, 2015, 2016, 2018a, 2018b, 2019), which provide an annual summary of interesting Lepidoptera records including some of author's work, and LAŠTŮVKA & LAŠTŮVKA (2014, 2015), focused mainly on leafminer families from all Iberian Peninsula, not only from Portugal.

A reasonable hypothesis is that most species feed on the same plants in Portugal as in other parts of Europe, but this should never be assumed to be the case. Based on what is recorded from HOSTS database (ROBINSON *et al.*, 2010) and LANGMAID *et al.* (2018), this article confirms the hypothesis for a number of species, but in some cases there are differences which might be attributed to the unavailability of some plants and availability of others, related or not. This paper also adds to the range of hostplants known for some polyphagous species.

The records obtained are the result of the author's fieldwork from 2010 to 2020 with some intensification in the most recent years.

## Material and Methods

No particular technique was used for the collection of larval stages of Lepidoptera. In the field the author conducted direct searches for larvae, without any particular group of species in mind, in suitable habitats. The main study area is Valongo municipality, where the author lives.

After collection, larvae were reared on the hostplants on which they were found, when possible. Apart from species with very characteristic larvae, all species were identified only after emergence from the pupa, by comparison with available illustrations or, if necessary, by dissection of genitalia.

Hostplants were identified also by comparison with available illustrations mostly from portal FLORA-ON (2014), where possible.

The order and nomenclature of families and species follows CORLEY (2015). The nomenclature of plant names follows the EURO+MED PLANTBASE (2006). Bibliographic data from outside Portugal are added to each species entry.

## Abbreviations and symbols

conf.: confirmed by  
det.: determined by  
MC: Martin Corley  
\*: not previously recorded hostplant

Provinces:

BA: Beira Alta  
BAL: Baixo Alentejo  
BB: Beira Baixa  
BL: Beira Litoral  
DL: Douro Litoral  
E: Estremadura  
M: Minho  
TM: Trás-os-Montes

## Results and discussion

This work adds 141 new hostplants for 100 Lepidoptera species from mainland Portugal. An interesting behaviour was noted in *Lacanobia oleracea* (Linnaeus, 1758) and *Peridroma saucia* (Hübner, [1808]), where the female moth lays her eggs not on low-growing plants, but on the underside of leaves of taller plants on which the larvae do not feed. In both cases, recorded below, young larvae were fed with *Rumex* sp. as they did not feed on the plants where the eggs were laid.

**List of families and species**

## INCURVARIIDAE

*Crinopteryx familiella* Peyerimhoff, 1871

\*DL: Couce, Valongo. Larva on *Cistus psilosepalus* Sweet, 22-I-2020, not reared (Fig. 1).

Bibliographic records: *Cistus salviifolius* L. (CORLEY, 2015; ROBINSON *et al.*, 2010) and *Cistus ladanifer* L. (CORLEY, 2015). It is also suggested to feed on other *Cistus* species by CORLEY (2015) but not particularly recorded for *C. psilosepalus* Sweet.

## BUCCULATRICIDAE

*Bucculatrix ulmella* Zeller, 1848

DL: Couce, Valongo. Free-living larvae on *Quercus robur* L. and *Quercus suber* L., 18-XI-2019.

Bibliographic records: *Quercus* sp. (LANGMAID *et al.*, 2018 ; ROBINSON *et al.*, 2010) and *Carpinus* sp. (LANGMAID *et al.*, 2018).

*Bucculatrix cidarella* (Zeller, 1839)

TM: França, Bragança. Free-living larva on *Alnus glutinosa* (L.) Gaertn., 03-X-2015.

Bibliographic records: *Alnus glutinosa* (L.) and *Myrica* sp. (LANGMAID *et al.*, 2018; ROBINSON *et al.*, 2010).

## GRACILLARIIDAE

*Micrurapteryx kollariella* (Zeller, 1839)

\*DL: Couce, Valongo. Larva on *Cytisus striatus* (Hill.) Rothm., 25-VI-2018. DL: Quintarrei, Valongo. Larva on *Adenocarpus complicatus* (L.) J. Gay, 27-III-2020.

Bibliographic records: *Cytisus scoparius* (L.) Link and *Genista* sp. (ROBINSON *et al.*, 2010). It is already recorded on *Adenocarpus complicatus* (L.) J. Gay by LAŠTŮVKA & LAŠTŮVKA (2015) in Spain, where is also suggested to feed on related genera of *Cytisus* and *Genista*.

*Euspilapteryx auroguttella* Stephens, 1835

\*DL: Quintarrei, Valongo. Larva on *Hypericum humifusum* L., 30-III-2020.

Bibliographic records: Several *Hypericum* sp. (LANGMAID *et al.*, 2018; ROBINSON *et al.*, 2010) but not particularly on *Hypericum humifusum* L.

## BEDELLIIDAE

*Bedellia somnulentella* (Zeller, 1847)

DL: Susão, Valongo. Larva on *Calystegia sepium* (L.) R. Br., 21-VII-2015.

Bibliographic records: *Convolvulus* sp., *Calystegia* sp. and *Ipomoea* sp. (LANGMAID *et al.*, 2018; ROBINSON *et al.*, 2010).

## CARCINIDAE

*Carcina quercana* (Fabricius, 1775)

DL: Crestuma, Vila Nova de Gaia. Larva on *Quercus robur* L., 10-XII-2014.

Bibliographic records: *Quercus* sp., *Fagus* sp. (LANGMAID *et al.*, 2018; ROBINSON *et al.*, 2010) and *Castanea sativa* (ROBINSON *et al.*, 2010). Both references suggest polyphagy on other species of trees and shrubs.

GELECHIIDAE

*Aproaerema anthyllidella* (Hübner, [1813])

\*DL: Susão, Valongo. Larva on *Lotus pedunculatus* Cav., 29-VIII-2016.

Bibliographic records: Mainly recorded on *Anthyllis* sp., *Medicago* sp., *Trifolium* sp. (LANGMAID *et al.*, 2018; ROBINSON *et al.*, 2010) and *Ononis* sp. (LANGMAID *et al.*, 2018). Also recorded on *Onobrychis* sp. (LANGMAID *et al.*, 2018; ROBINSON *et al.*, 2010). LANGMAID *et al.* (2018) also suggests feeding on other Fabaceae species.

*Dichomeris acuminatus* (Staudinger, 1876)

\*DL: Susão, Valongo. Larva on *Lotus pedunculatus* Cav., 02-IV-2016.

Bibliographic records: Several Fabaceae genera (ROBINSON *et al.*, 2010) and suggested to feed on *Trifolium* sp. and *Medicago* sp. (LANGMAID *et al.*, 2018).

*Dichomeris limbipunctellus* (Staudinger, 1859)

E: Mata Nacional dos Medos, Almada. Larva on *Cistus salviifolius* L., 25-VI-2016.

Bibliographic records: *Cistus salviifolius* L. and *Cistus crispus* L. (ROBINSON *et al.*, 2010).

*Acompsia schmidtellus* (Heyden, 1848)

\*BA: Famalicão, Guarda. Larva on *Mentha suaveolens* Ehrh., 26-V-2019 (Fig. 2).

Bibliographic records: *Origanum* sp. (LANGMAID *et al.*, 2018). Already recorded on *Clinopodium vulgare* L. in Portugal in CORLEY (2015).

*Aristotelia brizella* (Treitschke, 1833)

\*E: Lagoa de Albufeira, Sesimbra. Larva on seeds of *Armeria pungens* (Link) Hoffmanns. & Link, 03-II-2018.

Bibliographic records: *Armeria* sp. and *Limonium* sp. (ROBINSON *et al.*, 2010). *Armeria maritima* (Mill.) Willd (LANGMAID *et al.*, 2018) and *Limonium vulgare* Mill. (LANGMAID *et al.*, 2018; ROBINSON *et al.*, 2010).

MOMPHIDAE

*Mompha subbistrigella* (Haworth, 1828)

\*DL: Madalena, Vila Nova de Gaia. Larva on *Epilobium cf. obscurum* Schreb., 06-VIII-2017, det. MC.

Bibliographic records: *Epilobium montanum* L. and *Epilobium tetragonum* L. (LANGMAID *et al.*, 2018).

PTEROPHORIDAE

*Crombrugghia laetus* (Zeller, 1847)

BB: Serra da Malcata, Penamacor. Larva on *Andryala integrifolia* L., 26-VII-2018.

Bibliographic records: *Andryala integrifolia* L. (ROBINSON *et al.*, 2010).

*Merrifieldia malacodactylus* (Zeller, 1847)

\*TM: Vale da Porca, Macedo de Cavaleiros. Larva on *Lavandula pedunculata* (Mill.) Cav., 23-IV-2016, det. MC.

Bibliographic records: No records on both followed references.

## CHOREUTIDAE

*Tebenna micalis* (Mann, 1857)

DL: Quintarrei, Valongo. Larva on *Cirsium vulgare* (Savi) Ten., 31-VII-2014.

Bibliographic records: *Cirsium* sp., *Onopordum* sp., *Helichrysum* sp., *Arctotheca* sp. (ROBINSON *et al.*, 2010) and *Pulicaria dysenterica* (L.) Bernh. (LANGMAID *et al.*, 2018; ROBINSON *et al.*, 2010).

## TORTRICIDAE

*Ditula angustiorana* (Haworth, 1811)

DL: Crestuma, Vila Nova de Gaia. Larva on *Laurus nobilis* L., 15-I-2015. \*DL: Susão, Valongo. Larva on *Adenocarpus complicatus* (L.) J. Gay, 07-III-2015. \*DL: Susão, Valongo. Larva on *Salix* sp., 22-IV-2018. \*DL: Couce, Valongo. Larva on *Erica australis* L., 08-I-2020.

Bibliographic records: Both followed references indicate high range of polyphagy.

*Archips podana* (Scopoli, 1763)

\*DL: Couce, Valongo. Larva on *Quercus robur* L., 09-XI-2014. \*DL: Susão, Valongo. Larva on *Prunus domestica* L., 05-VII-2015. \*BA: Joana Martins, Vouzela. Larva on *Betula pubescens* Ehrh., 24-VII-2015.

Bibliographic records: Both followed references indicate high range of polyphagy.

*Archips rosana* (Linnaeus, 1758)

\*TM: França, Bragança. Larva on *Sorbus aucuparia* L., 20-VI-2015. \*TM: Minas de Santo Adrião, Vimioso. Larva on *Fraxinus angustifolia* Vahl, 19-V-2018.

Bibliographic records: Both followed references indicate high range of polyphagy.

*Argyrotaenia ljunghiana* (Thunberg, 1797)

\*DL: Madalena, Vila Nova de Gaia. Larva on *Chenopodium* sp., 13-VIII-2017.

Bibliographic records: Both followed references indicate high range of polyphagy.

*Cacoecimorpha pronubana* (Hübner, [1799])

\*DL: Susão, Valongo. Larva on *Vinca* sp., 29-XII-2013. DL: Susão, Valongo. Larva on *Rubus* sp., 15-V-2014. DL: Susão, Valongo. Larva on *Citrus* sp., 18-V-2014. DL: Bonfim, Porto. Larva on *Dianthus* sp. (ornamental), 03-IX-2014. DL: Francelos, Vila Nova de Gaia. Larva on *Rosa* sp. (ornamental), 07-I-2015. DL: Susão, Valongo. Larva on *Malus pumila* Mill., 25-VII-2016. \*DL: Susão, Valongo. Larva on *Hypericum* sp., 07-V-2017. \*BA: Vilar de Amargo, Figueira de Castelo Rodrigo. Larva on *Salix* sp., 12-V-2019.

Bibliographic records: Both followed references indicate high range of polyphagy.

*Clepsis rurinana* (Linnaeus, 1758)

\*DL: Couce, Valongo. Larva on *Potentilla* sp., 24-III-2019, conf. MC.

Bibliographic records: Both followed references indicate polyphagy.

*Acleris variegana* ([Denis & Schiffermüller], 1775)

DL: Susão, Valongo. Larva on *Prunus domestica* L., 19-IV-2015.

Bibliographic records: Both followed references indicate polyphagy mainly on Rosaceae.

*Celypha lacunana* ([Denis & Schiffermüller], 1775)

\*DL: Gemunde, Maia. Larva on *Urtica dioica* L., 14-VII-2018.

Bibliographic records: Both followed references indicate polyphagy, but neither particularly mentions *Urtica dioica* L.

*Spilonota ocellana* ([Denis & Schiffermüller], 1775)

\*TM: Vale da Porca, Macedo de Cavaleiros. Larva on *Alnus glutinosa* (L.) Gaertn., 23-IV-2016.

Bibliographic records: Both followed references indicate high range of polyphagy, but neither particularly mentions *Alnus glutinosa* (L.) Gaertn.

*Acroclita subsequana* (Herrich-Schäffer, 1851)

\*BL: Furadouro, Condeixa-a-Nova. Larva on *Euphorbia characias* L., 23-XII-2016.

Bibliographic records: *Euphorbia paralias* L. and *E. portlandica* L. (LANGMAID *et al.*, 2018; ROBINSON *et al.*, 2010), *E. pubescens* L. and *E. hirsuta* L. (ROBINSON *et al.*, 2010).

*Epinotia immundana* (Fischer von Röslerstamm, 1839)

DL: Serra do Marão, Amarante. Larva on *Betula pubescens* Ehrh., 15-VI-2019, conf. MC.

Bibliographic records: *Alnus* sp., *Betula* sp. (LANGMAID *et al.*, 2018; ROBINSON *et al.*, 2010) and *Rosa* sp. (LANGMAID *et al.*, 2018).

*Crociosema plebejana* Zeller, 1847

DL: Susão, Valongo. Larva on seeds of *Malva* sp., 11-VII-2016.

Bibliographic records: Several Malvaceae species (ROBINSON *et al.*, 2010) and in the seeds of *Malva arborea* (L.) Webb & Berthel. and *Alcea rosea* L. (LANGMAID *et al.*, 2018).

*Notocelia incarnatana* (Hübner, [1800])

TM: Minas de Santo Adrião, Vimioso. Larva on *Rosa* sp., 19-V-2018.

Bibliographic records: *Rosa* sp. and *Rosa spinosissima* L. (LANGMAID *et al.*, 2018; ROBINSON *et al.*, 2010).

*Grapholita janthinana* (Duponchel, 1843)

BL: Ansião. Larva on fruits of *Crataegus monogyna* Jacq., 22-VII-2017, det. MC.

Bibliographic records: Fruits of *Crataegus monogyna* Jacq. (LANGMAID *et al.*, 2018).

## PYRALIDAE

*Etiella zinckenella* (Treitschke, 1832)

\*BAL: Praia do Malhão, Vila Nova de Milfontes. Larva on seeds of *Erophaca baetica* (L.) Boiss., 12-V-2017.

Bibliographic records: Both followed references indicate high range of polyphagy mainly on Fabaceae. Neither particularly mentions *Erophaca baetica* (L.) Boiss.

*Acrobasis consociella* (Hübner, [1813])

DL: Couce, Valongo. Larva on *Quercus robur* L., 31-III-2019, det. MC.

Bibliographic records: *Quercus* sp. (LANGMAID *et al.*, 2018; ROBINSON *et al.*, 2010).

*Acrobasis glaucella* Staudinger, 1859

DL: Susão, Valongo. Larva on *Quercus suber* L., 02-IV-2016, det. MC. \*TM: Azibo, Macedo de Cavaleiros. Larva on *Quercus rotundifolia* Lam., 25-IV-2016, det. MC.

Bibliographic records: *Quercus suber* L. (ROBINSON *et al.*, 2010).

## CRAMBIDAE

*Udea ferrugalis* (Hübner, 1796)

DL: Susão, Valongo. Larva on *Mentha* sp., 14-VIII-2015.

Bibliographic records: Both followed references indicate polyphagy mainly on herbaceous plants. Already recorded on *Mentha* sp. (LANGMAID *et al.*, 2018).

*Evergestis marocana* (D. Lucas, 1956)

\*BAL: Praia do Malhão, Vila Nova de Milfontes. Larva on *Iberis procumbens* Lange, 12-V-2017 (Fig. 3).

Bibliographic records: No records on both followed references. Already recorded on *Iberis ciliata* subsp. *welwitschii* (Boiss.) Moreno in Spain (HUERTAS-DIONISIO, 2014).

## DREPANIDAE

*Watsonalla uncinula* (Borkhausen, 1790)

DL: Quintarrei, Valongo. Larva on *Quercus suber* L., 28-I-2018 (Fig. 4).

Bibliographic records: *Quercus* sp. (ROBINSON *et al.*, 2010).

*Drepana curvatula* (Borkhausen, 1790)

DL: Couce, Valongo. Larva on *Alnus glutinosa* (L.) Gaertn., 12-X-2014.

Bibliographic records: *Alnus* sp., *Betula* sp. and *Corylus avellana* L. (ROBINSON *et al.*, 2010).

## LASIOCAMPIDAE

*Malacosoma alpicola* Staudinger, 1870

\*TM: Vale da Porca, Macedo de Cavaleiros. Larva on *Halimium* sp., 23-IV-2016.

Bibliographic records: Polyphagous (ROBINSON *et al.*, 2010).

*Lasiocampa trifolii* ([Denis & Schiffermüller], 1775)

\*DL: Quintarrei, Valongo. Larva on *Erica umbellata* L., 14-IV-2014.

Bibliographic records: Polyphagous (ROBINSON *et al.*, 2010).

*Lasiocampa quercus* (Linnaeus, 1758)

\*BL: Furadouro, Condeixa-a-Nova. Larva on *Rhamnus alaternus* L., 30-XII-2015, not reared.

Bibliographic records: Polyphagous (ROBINSON *et al.*, 2010).

## SATURNIIDAE

*Saturnia pavonia* (Linnaeus, 1758)

DL: Quintarrei, Valongo. Larva on *Erica umbellata* L., 14-IV-2014. \*DL: Couce, Valongo. Larva on *Genista tridentata* L. and *Halimium lasianthum* (Lam.) Spach, 22-III-2020, not reared.

Bibliographic records: Polyphagous (ROBINSON *et al.*, 2010).

## GEOMETRIDAE

*Cyclophora puppillaria* (Hübner, [1799])

\*DL: Susão, Valongo. Larva on *Quercus suber* L., 14-VI-2015. \*E: Costa da Caparica, Almada. Larva on *Myrtus communis* L., 17-VI-2016. \*DL: Quintarrei, Valongo. Larva on *Cistus salviifolius* L., 09-II-2020.

Bibliographic records: *Quercus ilex* L. (ROBINSON *et al.*, 2010).



*Rhodometra sacraria* (Linnaeus, 1767)

DL: Susão, Valongo. Larva on *Rumex* sp., 14-X-2015.

Bibliographic records: *Rumex* sp., *Polygonum* sp. and *Emex* sp. (ROBINSON *et al.*, 2010).

*Larentia clavaria* (Haworth, 1809)

TM: Bobal, Mondim de Basto. Larva on *Malva tournefortiana* L., 04-VI-2017.

Bibliographic records: *Lavatera* sp., *Malva* sp., *Althaea* sp. and *Alcea* sp. (ROBINSON *et al.*, 2010).

*Gymnoscelis ruffasciata* (Haworth, 1809)

\*DL: Quintarrei, Valongo. Larva on flowers of *Erica umbellata* L., 17-V-2014. \*DL: Susão, Valongo. Larva on flowers of *Digitalis purpurea* L., 17-VI-2016.

Bibliographic records: Polyphagous (ROBINSON *et al.*, 2010).

*Chesias isabella* Schawerda, 1915

\*BA: Lagoa Comprida, Seia. Larva on *Cytisus* sp., 16-VII-2016.

Bibliographic records: No records in ROBINSON *et al.* (2010).

*Lomaspilis marginata* (Linnaeus, 1758)

DL: Francelos, Vila Nova de Gaia. Larva on *Salix babylonica* L., 27-VI-2014.

Bibliographic records: *Populus* sp., *Salix* sp, *Corylus* sp. and *Betula* sp. (ROBINSON *et al.*, 2010).

*Stegania trimaculata* (de Villers, 1789)

\*TM: Valpaços. Larva on *Populus nigra* L., 15-VIII-2016.

Bibliographic records: No records in ROBINSON *et al.* (2010).

*Macaria alternata* ([Denis & Schiffermüller], 1775)

\*M: Castro Laboreiro, Melgaço. Larva on *Frangula alnus* Mill., 08-VIII-2015.

Bibliographic records: No records in ROBINSON *et al.* (2010).

*Opisthograptis luteolata* (Linnaeus, 1758)

BAL: Cercal, Santiago do Cacém. Larva on *Prunus domestica* L., 14-V-2017.

Bibliographic records: Polyphagous (ROBINSON *et al.*, 2010).

*Biston betularia* (Linnaeus, 1758)

M: Castro Laboreiro, Melgaço. Larva on *Frangula alnus* Mill., 08-VIII-2015.

Bibliographic records: Polyphagous (ROBINSON *et al.*, 2010).

*Chemerina caliginearia* (Rambur, 1833)

\*TM: Vale da Porca, Macedo de Cavaleiros. Larva on *Halimium* sp., 23-IV-2016.

Bibliographic records: No records in ROBINSON *et al.* (2010). Already recorded in Portugal on *Cistus salviifolius* L. in CORLEY (2015).

*Peribatodes rhomboidaria* ([Denis & Schiffermüller], 1775)

\*DL: Couce, Valongo. Larva on *Cytisus striatus* (Hill) Rothm., 09-VIII-2014.

Bibliographic records: Polyphagous (ROBINSON *et al.*, 2010).

*Peribatodes ilicaria* (Geyer, [1833])

\*TM: Minas de Santo Adrião, Vimioso. Larva on *Quercus rotundifolia* Lam., 21-V-2018.

Bibliographic records: *Quercus ilex* L. and *Quercus suber* L. (ROBINSON *et al.*, 2010).

*Selidosema taeniolaria* (Hübner, [1813])\*BA: Trinta, Guarda. Larva on *Cytisus* sp., 25-V-2019.Bibliographic records: *Santolina chamaecyparissus* L. (ROBINSON *et al.*, 2010).*Hypomecis punctinalis* (Scopoli, 1763)DL: Susão, Valongo. Larva on *Malus pumila* Mill., 24-V-2015.Bibliographic records: Polyphagous (ROBINSON *et al.*, 2010).*Ectropis crepuscularia* ([Denis & Schiffermüller], 1775)DL: Francelos, Vila Nova de Gaia. Larva on *Salix babylonica* L., 30-VII-2015. DL: Serra do Marão, Amarante. Larva on *Salix* sp., 15-VI-2019.Bibliographic records: Polyphagous (ROBINSON *et al.*, 2010).*Cabera exanthemata* (Scopoli, 1763)DL: Susão, Valongo. Larva on *Salix* sp., 26-VI-2014.Bibliographic records: *Alnus glutinosa* (L.) Gaertn, *Populus tremula* L. and *Salix* sp. (ROBINSON *et al.*, 2010).

## NOTODONTIDAE

*Thaumetopoea herculeana* (Rambur, 1840)DL: Quintarrei, Valongo. Larva on *Cistus psilosepalus* Sweet, 09-III-2014, not reared.Bibliographic records: Polyphagous (ROBINSON *et al.*, 2010).*Furcula bifida* (Brahm, 1787)DL: Susão, Valongo. Larva on *Salix* sp., 04-VIII-2016.Bibliographic records: *Salix* sp. and *Populus* sp. (ROBINSON *et al.*, 2010). Already recorded for Portugal on *Salix* sp. by an old record in MENDES (1902).*Harpyia milhauseri* (Fabricius, 1775)\*M: Castro Laboreiro, Melgaço. Larva on *Quercus robur* L., 08-VIII-2015.Bibliographic records: *Quercus ilex* L. and *Quercus suber* L. (ROBINSON *et al.*, 2010).*Drymonia querna* ([Denis & Schiffermüller], 1775)\*DL: Susão, Valongo. Larva on *Quercus suber* L., 09-X-2015.Bibliographic records: No records (ROBINSON *et al.*, 2010).*Notodonta ziczac* (Linnaeus, 1758)DL: Nevogilde, Porto. Larva on *Populus alba* L. 06-VII-2015.Bibliographic records: *Populus* sp. and *Salix* sp. (ROBINSON *et al.*, 2010).*Phalera bucephala* (Linnaeus, 1758)M: Lindoso, Ponte da Barca. Larva on *Betula pubescens* Ehrh., 08-VIII-2015.Bibliographic records: Polyphagous (ROBINSON *et al.*, 2010).

## EREBIDAE

*Scoliopteryx libatrix* (Linnaeus, 1758)DL: Francelos, Vila Nova de Gaia. Larva on *Salix babylonica* L., 26-VI-2014.Bibliographic records: Polyphagous mainly on Salicaceae (ROBINSON *et al.*, 2010).

*Lymantria dispar* (Linnaeus, 1758)

DL: Gemunde, Maia. Larva on *Malus pumila* Mill., 09-VII-2014, not reared.

Bibliographic records: Polyphagous (ROBINSON *et al.*, 2010).

*Euproctis similis* (Fuessly, 1775)

\*DL: Leça do Balio, Matosinhos. Larva on *Quercus suber* L., 29-XII-2010, not reared. \*DL: Couce, Valongo. Larva on *Quercus robur* L., 26-IV-2015, not reared.

Bibliographic records: Polyphagous (ROBINSON *et al.*, 2010).

*Artimelia latreillii* (Godart, 1823)

\*DL: Couce, Valongo. Larva on *Cistus salviifolius* L., 11-V-2014. \*TM: Vale da Porca, Macedo de Cavaleiros. Larva on *Prunus persica* (L.) Batsch, 05-VI-2016. \*BA: Faia Brava, Figueira de Castelo Rodrigo. Larva on *Daphne gnidium* L., 03-VI-2018.

Bibliographic records: No records in ROBINSON *et al.* (2010).

*Phragmatobia fuliginosa* (Linnaeus, 1758)

DL: Susão, Valongo. Larva on *Plantago lanceolata* L., 19-I-2014. \*TM: Bobal, Mondim de Basto. Larva on *Omphalodes nitida* (Willd.) Hoffmanns. & Link., 04-VI-2017.

Bibliographic records: Polyphagous (ROBINSON *et al.*, 2010).

*Hyphoraia dejeani* (Godart, 1822)

\*TM: Bobal, Mondim de Basto. Larva on *Rumex* sp., 08-V-2018.

Bibliographic records: No records in ROBINSON *et al.* (2010).

## NOCTUIDAE

*Thysanoplusia orichalcea* (Fabricius, 1775)

DL: Susão, Valongo. Larva on *Brassica rapa* (L.) L., 16-I-2016. \*DL: Susão, Valongo. Larva on *Erodium moschatum* (L.) L'Hér., 09-X-2019.

Bibliographic records: Polyphagous (ROBINSON *et al.*, 2010).

*Ctenoplusia limbirena* (Guenée, 1852)

DL: Campanhã, Porto. Larva on *Mentha* sp., 28-VII-2016. \*DL: Susão, Valongo. Larva on *Erodium moschatum* (L.) L'Hér., 18-X-2019.

Bibliographic records: Polyphagous (ROBINSON *et al.*, 2010).

*Chrysodeixis chalcites* (Esper, 1789)

\*DL: Leça do Balio, Matosinhos. Larva on *Pelargonium* sp. (ornamental), 05-X-2010. DL: Susão, Valongo. Larva on *Mentha* sp., 26-X-2013.

Bibliographic records: Polyphagous (ROBINSON *et al.*, 2010).

*Autographa gamma* (Linnaeus, 1758)

\*DL: Susão, Valongo. Larva on *Erodium moschatum* (L.) L'Hér., 16-XI-2015. \*DL: Gemunde, Maia. Larva on *Calystegia sepium* (L.) R. Br., 14-VII-2018.

Bibliographic records: Polyphagous (ROBINSON *et al.*, 2010).

*Aedia leucomelas* (Linnaeus, 1758)

\*DL: Águas Santas, Maia. Larva on *Calystegia sepium* (L.) R. Br., 07-X-2017, not reared.

Bibliographic records: *Convolvulus* sp. and *Ipomoea* sp. (ROBINSON *et al.*, 2010).

*Colocasia coryli* (Linnaeus, 1758)

\*DL: Couce, Valongo. Larva on *Pyrus cordata* Desv., 12-X-2014. DL: Árvore, Vila do Conde. Larva on *Quercus robur* L., 30-IV-2015.

Bibliographic records: Polyphagous (ROBINSON *et al.*, 2010).

*Moma alpium* (Osbeck, 1778)

DL: Couce, Valongo. Larva on *Quercus robur* L., 01-VI-2015.

Bibliographic records: *Betula* sp., *Fagus* sp., *Quercus* sp. and *Sorbus aucuparia* L. (ROBINSON *et al.*, 2010).

*Acronicta tridens* ([Denis & Schiffermüller], 1775)

DL: Castêlo da Maia, Maia. Larva on *Prunus persica* (L.) Batsch, 29-VI-2014.

Bibliographic records: Polyphagous (ROBINSON *et al.*, 2010).

*Acronicta psi* (Linnaeus, 1758)

DL: Couce, Valongo. Larva on *Pyrus cordata* Desv., 12-X-2014.

Bibliographic records: Polyphagous (ROBINSON *et al.*, 2010).

*Acronicta rumicis* (Linnaeus, 1758)

DL: Francelos, Vila Nova de Gaia. Larva on *Salix babylonica* L., 08-VIII-2014. \*DL: Susão, Valongo. Larva on *Pyrus communis* L., 19-VII-2015.

Bibliographic records: Polyphagous (ROBINSON *et al.*, 2010).

*Acronicta megacephala* ([Denis & Schiffermüller], 1775)

TM: Carvalho, Alijó. Larva on *Populus nigra* L., 29-IX-2018.

Bibliographic records: *Alnus incana* (L.) Moench, *Populus* sp. and *Salix* sp. (ROBINSON *et al.*, 2010).

*Amphipyra pyramidea* (Linnaeus, 1758)

\*TM: Azibo, Macedo de Cavaleiros. Larva on *Prunus avium* (L.) L., 24-IV-2016.

Bibliographic records: Polyphagous (ROBINSON *et al.*, 2010).

*Allophyes alfaroi* Agenjo, 1951

\*TM: Penelas, Vila Real. Larva on *Crataegus monogyna* Jacq., 29-III-2015.

Bibliographic records: *Prunus* sp. (ROBINSON *et al.*, 2010).

*Heliothis peltigera* ([Denis & Schiffermüller], 1775)

\*DL: Francelos, Vila Nova de Gaia. Larva on *Osteospermum* sp. (ornamental), 03-VII-2014. \*BL: Tocha, Cantanhede. Larva on *Dittrichia viscosa* (L.) Greuter, 15-V-2017.

Bibliographic records: Polyphagous (ROBINSON *et al.*, 2010).

*Helicoverpa armigera* (Hübner, [1808])

DL: Francelos, Vila Nova de Gaia. Larva on *Solanum lycopersicum* L., 03-IX-2014.

Bibliographic records: Polyphagous (ROBINSON *et al.*, 2010).

*Spodoptera exigua* (Hübner, [1808])

\*DL: Susão, Valongo. Larva on *Rumex* sp., 24-VIII-2018.

Bibliographic records: Polyphagous (ROBINSON *et al.*, 2010).

*Phlogophora meticulosa* (Linnaeus, 1758)

\*DL: Susão, Valongo. Larva on *Rumex* sp., 26-I-2014. \*DL: Susão, Valongo. Larva on *Malva* sp., 22-II-2014. \*DL: Susão, Valongo. Larva on *Trifolium repens* L., 23-XI-2015.

Bibliographic records: Polyphagous (ROBINSON *et al.*, 2010).

*Aporophyla nigra* (Haworth, 1809)

\*DL: Quintarrei, Valongo. Larva on *Simethis mattiazzi* (Vand.) Sacc., 14-IV-2014. \*DL: Quintarrei, Valongo. Larva on *Dittrichia viscosa* (L.) Greuter, 30-III-2020, not reared.

Bibliographic records: Polyphagous (ROBINSON *et al.*, 2010).

*Polymixis lichenea* (Hübner, [1813])

\*DL: Susão, Valongo. Larva on *Fumaria* sp., 14-I-2015.

Bibliographic records: Polyphagous (ROBINSON *et al.*, 2010).

*Orthosia cerasi* (Fabricius, 1775)

DL: Susão, Valongo. Larva on *Salix* sp., 06-IV-2015.

Bibliographic records: Polyphagous (ROBINSON *et al.*, 2010).

*Orthosia gothica* (Linnaeus, 1758)

\*TM: Azibo, Macedo de Cavaleiros. Larva on *Ulmus minor* Mill., 18-V-2016.

Bibliographic records: Polyphagous (ROBINSON *et al.*, 2010).

*Lacanobia oleracea* (Linnaeus, 1758)

DL: Susão, Valongo. Eggs on *Vitis vinifera* L., fed with *Rumex* sp., 11-IX-2015. DL: Susão, Valongo. Larva on *Rumex* sp., 22-XI-2014.

Bibliographic records: Polyphagous (ROBINSON *et al.*, 2010).

*Hecatera weissi* (Draudt, 1934)

\*BAL: Cercal, Santiago do Cacém. Larva on *Crepis* sp., 15-V-2017 (Fig. 5).

Bibliographic records: No records in ROBINSON *et al.* (2010). Already recorded in Portugal on *Galactites tomentosus* Moench in CORLEY (2015).

*Hadena perplexa* ([Denis & Schiffermüller], 1775)

DL: Susão, Valongo. Larva on flowers and developing seeds of *Silene latifolia* Poir., 06-V-2019 (Fig. 6).

Bibliographic records: *Silene* sp. (ROBINSON *et al.*, 2010).

*Peridroma saucia* (Hübner, [1808])

DL: Susão, Valongo. Eggs on *Citrus* sp., fed with *Rumex* sp., 31-V-2014. \*TM: França, Bragança. Larva on *Genista* sp., 20-VI-2015.

Bibliographic records: Polyphagous (ROBINSON *et al.*, 2010).

*Noctua pronuba* Linnaeus, 1758

\*DL: Susão, Valongo. Larva on *Fumaria* sp., 14-I-2015. \*DL: Couce, Valongo. Larva on *Laphangium luteoalbum* (L.) Tzvelev, 13-XI-2016.

Bibliographic records: Polyphagous (ROBINSON *et al.*, 2010).

*Noctua comes* Hübner, [1813]

\*DL: Campanhã, Porto. Larva on *Buxus sempervirens* L., 29-III-2014. \*DL: Mindelo, Vila do Conde. Larva on *Cistus salviifolius* L., 17-II-2015.

Bibliographic records: Polyphagous (ROBINSON *et al.*, 2010).

*Xestia xanthographa* ([Denis & Schiffermüller], 1775)

DL: Susão, Valongo. Larva on *Rumex* sp., XII-2014. \*DL: Susão, Valongo. Larva on *Dactylis glomerata* L., 26-XII-2016.

Bibliographic records: Polyphagous (ROBINSON *et al.*, 2010).

*Xestia c-nigrum* (Linnaeus, 1758)

\*DL: Susão, Valongo. Larva on *Erodium moschatum* (L.) L'Hér., 08-XI-2015. \*DL: Susão, Valongo. Larva on *Dactylis glomerata* L., 22-II-2016.

Bibliographic records: Polyphagous (ROBINSON *et al.*, 2010).

#### NOLIDAE

*Pseudoips prasinana* (Linnaeus, 1758)

DL: Couce, Valongo. Larva on *Quercus robur* L., 18-XI-2019, not reared.

Bibliographic records: *Quercus* sp. and *Betula* sp. (ROBINSON *et al.*, 2010).

Most of the records confirm what is already recorded for other countries and the range of polyphagy of some species (e.g. *Cacoecimorpha pronubana* (Hübner, [1799]) and *Phlogophora meticulosa* (Linnaeus, 1758)) and some tribes in particular (e.g. Archipini and Noctuini). Of relevant interest, are the records of *Acompsia schmidtellus* (Heyden, 1848) on *Mentha suaveolens* Ehrh., as it is a completely new hostplant for that species, and *Furcula bifida* (Brahm, 1787) on *Salix* sp., as it confirms a previous old record by MENDES (1902).

#### Acknowledgements

I am most grateful to Martin Corley for all identifications and confirmations over the past few years and, along with Sónia Ferreira, for the encouragement to publish my first paper as a single author. I also would like to thank Carlos Silva and Edmundo Jesus, for all the fieldwork trips that they provided me, and my parents for taking care of all larvae when I was not home.

#### BIBLIOGRAPHY

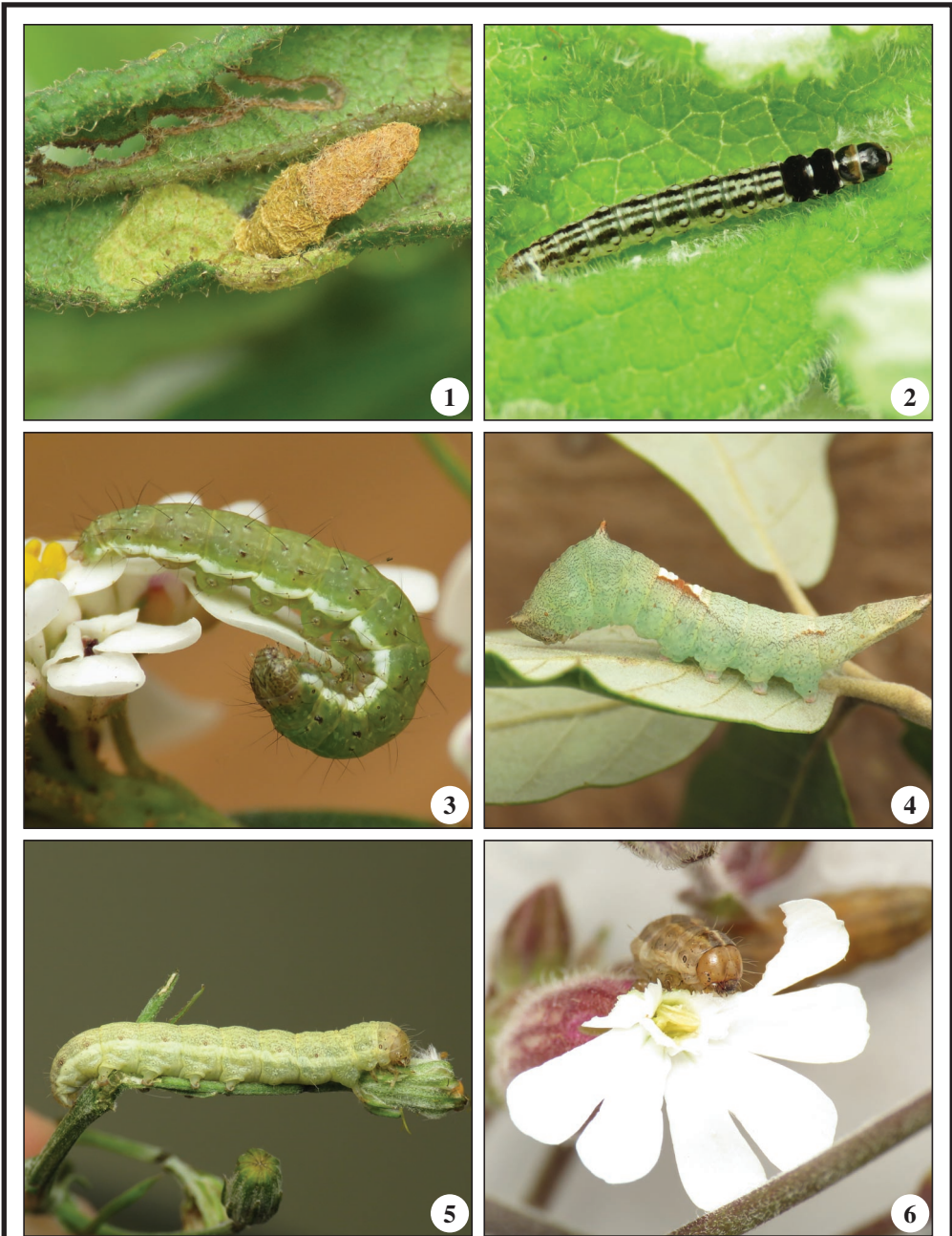
- CORLEY, M. F. V., 2015.– *Lepidoptera of Continental Portugal. A fully revised list*: 288 pp. Martin Corley, Faringdon.
- CORLEY, M. F. V., CARDOSO, J. P., DALE, M. J., MARABUTO, E., MARAVALHAS, E. & PIRES, P., 2012a. New and interesting Portuguese Lepidoptera records from 2010. (Insecta: Lepidoptera).– *SHILAP Revista de lepidopterología*, **40**(157): 5-21.
- CORLEY, M. F. V., FERREIRA, S., GRUNDY, D., NUNES, J., PIRES, P. & ROSETE, J., 2018b.– New and interesting Portuguese Lepidoptera records from 2017 (Insecta: Lepidoptera).– *SHILAP Revista de lepidopterología*, **46**(184): 551-576.
- CORLEY, M. F. V., MARABUTO, E. & PIRES, P., 2007.– New Lepidoptera for the fauna of Portugal (Insecta: Lepidoptera).– *SHILAP Revista de lepidopterología*, **35**(139): 321-334.
- CORLEY, M. F. V., MARABUTO, E., MARAVALHAS, E., PIRES, P. & CARDOSO, J. P., 2008.– New and interesting Portuguese Lepidoptera records from 2007. (Insecta: Lepidoptera).– *SHILAP Revista de lepidopterología*, **36**(143): 283-300.
- CORLEY, M. F. V., MARABUTO, E., MARAVALHAS, E., PIRES, P. & CARDOSO, J. P., 2009.– New and interesting Portuguese Lepidoptera records from 2008. (Insecta: Lepidoptera).– *SHILAP Revista de lepidopterología*, **37**(148): 463-484.
- CORLEY, M. F. V., MARABUTO, E., MARAVALHAS, E., PIRES, P. & CARDOSO, J. P., 2011.– New and interesting Portuguese Lepidoptera records from 2009. (Insecta: Lepidoptera).– *SHILAP Revista de lepidopterología*, **39**(153): 15-35.
- CORLEY, M. F. V., MARAVALHAS, E. & PASSOS DE CARVALHO, J., 2006.– Miscellaneous additions to the Lepidoptera of Portugal (Insecta: Lepidoptera).– *SHILAP Revista de lepidopterología*, **34**(136): 407-427.
- CORLEY, M. F. V., MERCKX, T., CARDOSO, J. P., DALE, M. J., MARABUTO, E., MARAVALHAS, E. &

- PIRES, P., 2012b.– New and interesting Portuguese Lepidoptera records from 2011. (Insecta: Lepidoptera).– *SHILAP Revista de lepidopterología*, **40**(160): 489-511.
- CORLEY, M. F. V., MERCKX, T., MARABUTO, E. M., ARNSCHIED, W. & MARAVALHAS, E., 2013.– New and interesting Portuguese Lepidoptera records from 2012. (Insecta: Lepidoptera).– *SHILAP Revista de lepidopterología*, **41**(164): 449-477.
- CORLEY, M. F. V., NUNES, J., ROSETE, J., FERREIRA, S., 2019. New and interesting Portuguese Lepidoptera records from 2018 (Insecta: Lepidoptera).– *SHILAP Revista de lepidopterología*, **47**(188): 611-630.
- CORLEY, M. F. V., ROSETE, J., GONÇALVES, A. R., MATA, V., NUNES, J. & PIRES, P., 2018a.– New and interesting Portuguese Lepidoptera records from 2016 (Insecta: Lepidoptera). *SHILAP Revista de lepidopterología*, **46**(181): 33-56.
- CORLEY, M. F. V., ROSETE, J., GONÇALVES, A. R., NUNES, J., PIRES, P., MARABUTO, E., 2016.– New and interesting Portuguese Lepidoptera records from 2015 (Insecta: Lepidoptera).– *SHILAP Revista de lepidopterología*, **44**(176): 615-643.
- CORLEY, M. F. V., ROSETE, J., MARABUTO, E., MARAVALHAS, E. & PIRES, P., 2014.– New and interesting Portuguese Lepidoptera records from 2013. (Insecta: Lepidoptera).– *SHILAP Revista de lepidopterología*, **42**(168): 587-613.
- CORLEY, M. F. V., ROSETE, J., ROMÃO, F., DALE, M. J., MARABUTO, E., MARAVALHAS, E. & PIRES, P., 2015.– New and interesting Portuguese Lepidoptera records from 2014. (Insecta: Lepidoptera).– *SHILAP Revista de lepidopterología*, **43**(172): 583-613.
- EURO+MED PLATABASE, 2006.– *Euro+Med PlantBase - the information resource for Euro-Mediterranean plant diversity*. Available from <http://ww2.bgbm.org/EuroPlusMed/> (accessed 9 April 2020).
- FLORA-ON, 2014.– *Flora de Portugal Interactiva, 2014. Sociedade Portuguesa de Botânica*. Available from <http://www.flora-on.pt/> (accessed 9 April 2020).
- HUERTAS-DIONISIO, M., 2014.– Estados inmaturos de Lepidoptera (XLVII). Tres especies del género *Evergestis* Hübner, [1825] en Huelva, España (Lepidoptera: Crambidae, Evergestinae).– *SHILAP Revista de lepidopterología*, **42**(165): 5-17.
- LANGMAID, J. R., PALMER, S. M., YOUNG, M. R., 2018.– *A Field Guide to the Smaller Moths of Great Britain and Ireland*: 389 pp. (3rd edition), BENHS, Berkshire.
- LAŠTŮVKA, A. & LAŠTŮVKA, Z., 2014.– New records of mining moths from the Iberian Peninsula from 2014 (Insecta: Lepidoptera).– *SHILAP Revista de lepidopterología*, **42**(168): 633-647.
- LAŠTŮVKA, A. & LAŠTŮVKA, Z., 2015.– New records of Lepidoptera from the Iberian Peninsula for 2015 (Insecta: Lepidoptera).– *SHILAP Revista de lepidopterología*, **43**(172): 633-644.
- MENDES DE AZEVEDO, C., 1902-1903.– Lepidoptera de Portugal. I. Lepidopteros da região de S. Fiel (Beira Baixa).– *Brotéria*, **1**: 149-171 (1902), **2**: 41-80 (1903).
- ROBINSON, G. S., ACKERY, P. R., KITCHING, I. J., BECCALONI, G. W. & HERNÁNDEZ, L. M., 2010.– *HOSTS - A Database of the World's Lepidopteran Hostplants*. Natural History Museum, London. Available from <http://www.nhm.ac.uk/hosts/> (accessed 23 April 2020).

J. N.  
 Rua Padre Miguel Paupério do Vale, 401  
 PT-4440-687 Valongo  
 PORTUGAL / PORTUGAL  
 E-mail: joaomiguelfn@sapo.pt  
<https://orcid.org/0000-0002-9146-6089>

(Recibido para publicación / Received for publication 28-VI-2010)  
 (Revisado y aceptado / Revised and accepted 21-VII-2020)  
 (Publicado / Published 30-III-2021)





**Figures 1-6.**– 1. *Crinopteryx familiella* Peyerimhoff, 1871. 2. *Acompsia schmidtellus* (Heyden, 1848). 3. *Evergestis marocana* (D. Lucas, 1956). 4. *Watsonalla uncinula* (Borkhausen, 1790). 5. *Hecatera weissii* (Draudt, 1934). 6. *Hadena perplexa* ([Denis & Schiffermüller], 1775).