


Feasibility of the MELD score as a screening tool for pharmacists to identify patients with impaired hepatic function at hospital admission

Kathrin Golla PharmD^{1,2}  | Hanna Mannell PhD² | Andreas Benesic MD³  |
Tobias Dreischulte PhD⁴ | Eva Grill PhD⁵ | Dorothea Strobach PhD^{1,2} 

¹Hospital Pharmacy, University Hospital, LMU Munich, Munich, Germany

²Doctoral Program Clinical Pharmacy, University Hospital, LMU Munich, Munich, Germany

³Department of Internal Medicine - Gastroenterology, Krankenhaus GmbH Weilheim-Schongau, Schongau, Germany

⁴Institute of General Practice and Family Medicine, University Hospital, LMU Munich, Munich, Germany

⁵Institute for Medical Information Processing, Biometrics and Epidemiology, LMU Munich, Munich, Germany

Correspondence

Kathrin Golla, Marchioninstr. 15, 81377 Munich, Germany.
Email: Kathrin.Golla@med.uni-muenchen.de

Funding information

This work was supported by Stiftung Patient & Klinische Pharmazie, Munich, Bavaria, Germany.

Abstract

What is known and Objective: Hepatic impairment (HI) is a known risk factor for drug safety. The MELD score (Model-for-endstage-liver-disease), calculated from serum creatinine, bilirubin and International Normalized Ratio (INR), is a promising screening tool corresponding to Child-Pugh Score (CPS) for drug adjustment. We tested the feasibility of MELD as an automatic screening tool accounting for correct calculation, interfering factors (IF) and detection of patients corresponding to CPS-B/C potentially requiring drug adjustment.

Methods: We retrospectively calculated MELD for a 3-month cohort of surgical patients and assessed need for adjustment of MELD parameters to standard values. IF for INR (oral anticoagulants) and serum creatinine (renal insufficiency (RI; eGFR < 60 ml/min/1.73m²); as well as drugs elevating creatinine levels (DECL)) and the number of patients with MELD scores corresponding to CPS-B/C were analysed. For MELD ≥ 7.5, liver and bile diagnoses were recorded.

Results and discussion: Of 1183 patients, MELD was calculable for 761 (64%; median 7.5, range 6.4–36.8). Parameters had to be adjusted for 690 (91%) patients. IF of parameters were RI in 172 (23%), INR-elevating drugs in 105 (14%) and DECL in 33 (4%) patients. Of 335 (44%) patients with MELD ≥ 7.5, 122 (36%) had documented liver or bile diagnoses. MELD 10–<15 (corresponding to CPS-B) was found for 105 (14%), MELD ≥ 15 (corresponding to CPS-C) for 66 (9%) of the 761 patients with a calculated MELD. Referred to all patients, drug adjustments due to possible HI were recommendable for 14% of patients with suspected CPS-B/C.

What is new and Conclusion: MELD is a feasible screening tool for HI as a risk factor for drug safety at hospital admission when appropriately considering correct parameter adjustment and RI and INR-elevating drugs as IF. Further evaluation of sensitivity and specificity is needed.

KEYWORDS

clinical pharmacist, hepatic impairment, patient safety

This is an open access article under the terms of the Creative Commons Attribution-NonCommercial-NoDerivs License, which permits use and distribution in any medium, provided the original work is properly cited, the use is non-commercial and no modifications or adaptations are made.

© 2022 The Authors. *Journal of Clinical Pharmacy and Therapeutics* published by John Wiley & Sons Ltd.

1 | INTRODUCTION

In liver disease, important pathophysiological changes affecting the pharmacokinetics and pharmacodynamics of drugs occur. Drug choice and dosage have to be adjusted to avoid patient harm.^{1,2} Hepatic impairment (HI) has been characterized as a risk factor for drug safety, increasing the number of adverse drug reactions (ADR) and hospital admissions.^{3–6} In hospitalized patients, HI has been reported for 6%–54%, depending on the medical speciality.^{7–9} Screening for drug safety risk factors is an important task at hospital admission as part of medication reconciliation. However, a validated screening tool for HI in patients admitted to hospital has not yet been established.

The assessment of liver function is complex and cannot rely on one single parameter. In clinical practice, multiple laboratory liver parameters (LLP) are considered. However, this approach has been questioned, since LLP are not necessarily elevated in all kinds of liver diseases, can be altered for extrahepatic reasons and do not, in fact, reflect liver function and severity of HI.¹⁰ In particular, it has been proposed to test for elevated alanine aminotransferase (ALT) as an index parameter to identify patients with liver disease.^{11,12}

Scores developed to determine the severity of liver disease are another screening tool discussed. The Child-Pugh Score (CPS) categorizes patients into classes A, B and C based on clinical symptoms (ascites and hepatic encephalopathy) and the laboratory parameters bilirubin, albumin and International Normalized Ratio (INR).¹³ Most recommendations for drug adjustment to liver function refer to CPS, since the Food and Drug Administration and the European Medicines Agency both recommend it.^{14,15} The inclusion of clinical symptoms, to be assessed repeatedly by a physician, is a key limitation because judgement is subjective and precludes use of CPS as an automated screening tool.^{16–19} An analytical CPS (ACP), calculated only from the laboratory parameters, has been investigated for screening by pharmacists.²⁰ However, the number of patients identified with possible HI was very low (0.34%) compared to a prevalence of at least 6–7% for all hospitalized patients, suggesting a low sensitivity.^{7–9,20}

Another important score, the Model-for-endstage-liver-disease (MELD), is calculated from the laboratory parameters serum creatinine (SCrea), bilirubin and INR. MELD was developed to determine mortality after implementation of transjugular intrahepatic portosystemic shunts.¹⁹ Of interest, MELD ranges have been correlated to CPS classes,^{16,17} thereby linking CPS-based drug adjustment to MELD calculation. Several MELD variations have been developed. The more sensitive MELD-Na score includes serum sodium as a marker of hyponatremia reflecting severity of cirrhosis and is used to allocate organs for liver transplantation.^{19,21} For patients taking vitamin-K antagonists (VKA), elevating INR, MELD-Xi is available excluding INR from calculation.²²

Although MELD was not meant for use in patients without or with only mild hepatic disease, MELD and MELD variations have been assessed as general predicting tools, for example for perioperative risks, postoperative complications, length of hospital stay and mortality.^{16,18,23–25} When discussing MELD as a screening tool for HI, interfering factors (IF) of MELD parameters have to be considered. SCrea

can be altered by many factors, most importantly renal insufficiency (RI). Also, drugs elevating creatinine levels (DECL), for example due to inhibition of renal creatinine transporters, represent IF.²⁶ Dialysis will decrease SCrea, thus, for MELD calculation the level is corrected to 4 mg/dl.¹⁹ INR is elevated by VKA or direct-acting oral anticoagulants (DOAC).²⁷ Many factors like diuretics or intravenous fluids will alter serum sodium.^{19,28} Bilirubin can be elevated due to Gilbert-Meulengracht syndrome affecting 4–16% of the population.²⁹ Previous studies regarding the use of MELD or MELD variations as a prognostic or screening tool frequently neglected IF.^{18,23–25,30,31} Moreover, to avoid negative values of MELD, parameters have to be set to standard levels when they are outside defined ranges.^{19,32} No data exist investigating how often these corrections are necessary.

As there is currently no established tool for screening for patients with HI at hospital admission, we aimed to examine the feasibility of MELD for automatic HI screening and associated drug-related problems. To this end, we retrospectively evaluated surgical patients at hospital admission and identified patients with MELD scores corresponding to CPS-B and C, for whom drug adjustment to liver function might be requested. In order to assess feasibility, we considered (1) availability of MELD parameters at hospital admission, (2) the necessity to correctly use standard values for calculation, (3) the importance of IF of MELD parameters, (4) the distribution of MELD scores reflecting the percentage of patients with CPS-B/C potentially needing drug adjustment to liver function, and (5) compared results to MELD-Na, MELD-Xi, elevated ALT and ACP as alternative screening tools.

2 | METHODS

2.1 | Study design

We retrospectively evaluated patients aged over 18 years who were admitted to the surgical department of a large teaching hospital in Bavaria, Germany, January to March 2019 and had received pharmacist-led medication reconciliation (PhMR). PhMR is routinely performed for all admitted patients Monday to Friday assessing a detailed drug history and generating a medication list including all prescribed and over-the-counter drugs taken. Clinical data were extracted from the electronic patient information system (SAP--i.s.h.med, Cerner Corporation, North Kansas City, USA). Laboratory data from the day of admission were documented for SCrea, bilirubin, INR, sodium, ALT and albumin. Information on drugs was taken from the medication list of PhMR. The study was conducted in accordance with the Declaration of Helsinki. Approval was obtained by the ethics committee of the University Hospital Munich (17–499).

2.2 | Calculation of MELD and hepatic diagnoses

For all patients, MELD, MELD-Na, and MELD-Xi were calculated (Figure 1). The minimum MELD achievable is six when appropriately

adjusting parameters.¹⁹ We set MELD ≥ 7.5 as potentially indicating liver disease since this will exclude all cases with maximal normal values of the parameters. Adjustment of drug therapy is mainly necessary for CPS classes B and C, corresponding to MELD 10–<15 and ≥ 15 respectively.¹⁷ Therefore, patients were grouped into the following MELD ranges: 6 to <7.5 (normal); 7.5 to <10 (elevated); and 10 to <15 (CPS-B); ≥ 15 (CPS-C). For patients with a MELD ≥ 7.5 , electronic records were searched for diagnoses and symptoms suggesting liver/bile disease.

2.3 | Assessment of interfering factors of MELD parameters

For patients with calculated MELD score, IF of MELD parameters were assessed. For SCrea, chronic kidney disease (CKD) and intake of DECL were considered. Patients were classified into CKD stages (Kidney Disease Improving Global Outcome Initiative) based on the estimated glomerular filtration rate (eGFR) calculated by the CKD-EPI formula.³³ Renal impairment (RI) was defined as eGFR <60 ml/min/1.73 m². Electronic records were searched for dialysis. DECL included tyrosine kinase inhibitors (TKI; imatinib, bosutinib, sorafenib, sunitinib, crizotinib, gefitinib and pazopanib), poly-ADP-ribose-polymerase inhibitors olaparib and rucaparib, cobicistat, dronedarone, amiodarone, cimetidine, trimethoprim, pyrimethamine, rilpivirine, dolutegravir and fibrates (fenofibrate, bezafibrate).^{26,34–37} For INR, intake of VKA and DOAC was considered as IF. Electronic charts were searched for Gilbert-Meulengracht syndrome as an IF for bilirubin. Since serum sodium is affected by a broad variety of factors, no IF were considered because of the large number of possible interferences.^{19,28}

2.4 | Alternative screening tools ALT and ACP

ALT and ACP were assessed as alternative screening tools. For ALT, a threefold elevation of the upper limit of normal (ULN) was rated as clinically relevant in accordance with local hepatologists and literature recommendations.^{38,39} ACP was calculated for all patients with albumin, bilirubin and INR values available from the day of admission. ACP ≥ 7 was defined as indicating potential HI.²⁰

2.5 | Statistical analyses

Categorical variables were expressed with their frequency distribution and continuous variables as median and range. For comparison of MELD scores concerning intake of DECL, VKA or DOAC, Mann-Whitney U test was applied for independent samples (continuous variables, nonnormal distribution). Friedman test and following post hoc test (Bonferroni) were applied for comparison of the MELD variants (continuous variables, nonnormal distribution and dependent samples). Kruskal-Wallis test with subsequent post hoc test (Bonferroni) was used to compare eGFR within predefined MELD ranges (continuous variables, nonnormal distribution and independent samples). Cohen's kappa was calculated to determine interrater reliability between MELD/MELD-Na, MELD/ALT, and MELD/ACP and interpreted according to Landis&Koch.^{40,41} Statistical significance was accepted as $p < 0.05$. Data documentation and statistical analysis were performed with Microsoft Excel[®] 2016 (Seattle, WA, USA) and IBM SPSS Statistics[®] version 25.0 (Armonk).

3 | RESULTS

3.1 | Calculation of MELD and MELD-Na for surgical patients at hospital admission

Of 1183 patients, 817 (69%) were male and the median age was 63 years (18–99). For 761 patients (64%), all MELD parameters at admission were electronically available (Figure 2). The most often missing parameter was bilirubin (397, 34%). The median MELD for the 761 patients was 7.5 (6.4–36.8) and 335 (44%) presented with MELD ≥ 7.5 , potentially indicating liver disease. Figure 2 and Table 1 show details on distribution in MELD ranges and patient characteristics. When setting MELD scores to corresponding CPS classes, for 171 (23%) patients assessment of drug therapy regarding liver function would be necessary.

MELD-Na was calculable for 757 (64%) patients. Compared to MELD, this achieved slightly higher results with a median score of 7.9 (6.4–36.8). Classification in the same ranges as MELD and corresponding CPS classes leads to 220 (29%) of the 757 patients with calculated MELD-Na with CPS-B or C and potentially requiring drug adjustment to liver function (Figure 3).

FIGURE 1 MELD formulas and adjustment rules of the parameters^{19,22,32,54}

$$\text{MELD} = 9.57 \times \ln(\text{serum creatinine (mg/dl)}) + 3.78 \times \ln(\text{bilirubin (mg/dl)}) + 11.2 \times \ln(\text{INR}) + 6.43$$

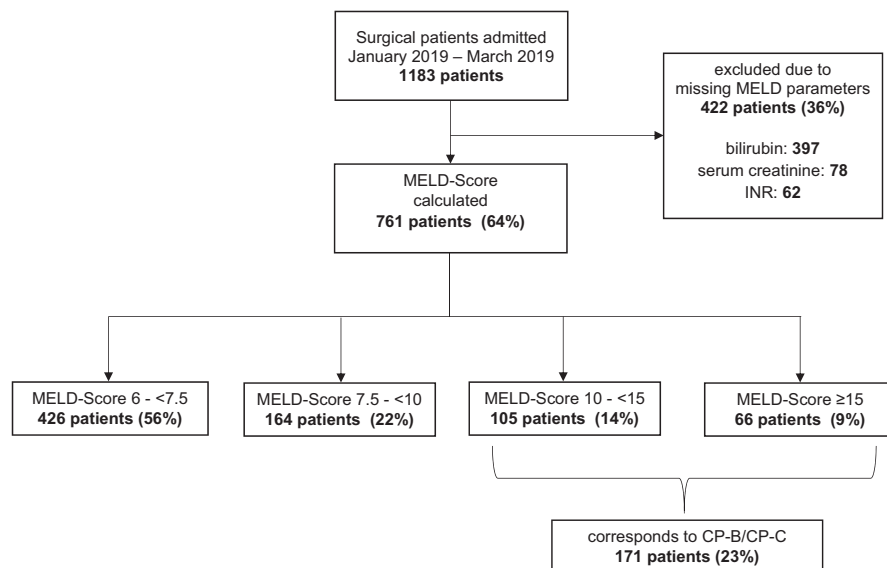
$$\text{MELD-Na} = \text{MELD} + 1.32 \times (137 - \text{serum sodium (mmol/l)}) - [0.033 \times \text{MELD} \times (137 - \text{serum sodium (mmol/l)})]$$

$$\text{MELD-Xi} = 5.11 \times \ln(\text{bilirubin (mg/dl)}) + 11.76 \times \ln(\text{serum creatinine (mg/dl)}) + 9.44$$

Need for parameter adjustment according to the Organ Procurement and Transplantation Network:

- serum creatinine: set to 1 if value is <1 and set to 4 if value is >4 or patient was on dialysis at least 2 times or had a Continuous Veno-Venous Hemodialysis for 24 hours within the last week
- bilirubin: set to 1 if value is <1
- INR: set to 1 if value is <1
- serum sodium: set to 125 if value is <125 and set to 137 if value is >137

FIGURE 2 Calculation of MELD at hospital admission for surgical patients



3.2 | Adjustment of MELD parameters

To characterize the feasibility of MELD as an automatic screening tool, we determined how often MELD parameters had to be set to standard values. Of 761 patients with calculated MELD, one or more parameter had to be adjusted for 690 (91%). Bilirubin, INR and SCrea were <1 and had to be set to one in 617, 242 and 382 cases respectively. For 32 patients (4%), adjustment of SCrea to 4 mg/dl was necessary (30 cases >4 mg/dl, two haemodialysis). For MELD-Na, sodium levels had to be adjusted for 548 patients (545 >137 mmol/l, three <125 mmol/l) (Figure 4).

3.3 | Hepatic diagnoses in patients with MELD ≥ 7.5 at hospital admission

Of 335 patients with MELD ≥ 7.5 , liver/bile diagnoses or symptoms were found for 122 (36%; Table 1). Of note, for 65 patients with MELD 10- <15 (corresponding to CPS-B) and 47 with MELD ≥ 15 (corresponding to CPS-C), no documentation of liver or biliary tract disease was found.

3.4 | Interfering factors of MELD parameters

Renal impairment was present in 160 (48%) of the 335 patients with MELD ≥ 7.5 . The number of patients with RI as IF increases in parallel to MELD scores (Figure 5, Table 1).

DECL were taken by 23 (7%) of the 335 patients with MELD ≥ 7.5 . These patients had significant higher MELD scores ($p = 0.01$), and 17 (74%) had an eGFR <60 ml/min/1.73m² reflecting true RI and/or drug effect on creatinine excretion. Of the ten drugs studied, trimethoprim (frequently as pneumocystic-carinii-pneumonia prophylaxis) occurred 13, amiodarone four, dolutegravir three, fibrates two times and TKI once.

Of 1183 study patients, 154 (13%) took INR-elevating drugs (122 DOAC, 32 VKA) and 40 (26%) of these had an elevated INR at admission. For 105 (68%) patients, MELD-Xi parameters were available with a median score of 11.5 (9.4–25.8). In comparison, the median MELD score was 9.4 (6.4–36.8) and median MELD-Na score 10.5 (6.4–36.8) in this subgroup.

Also, when calculating MELD-Xi for all patients, scores were significantly higher (median 9.4 (9.4–32.7); $p < 0.001$) and more patients in higher MELD ranges compared to MELD or MELD-Na (Figure 3). Of 335 patients with MELD ≥ 7.5 , 77 patients (23%) took INR-elevating drugs (DOAC 56 (17%), VKA 21 (6%)) and had significant higher MELD scores ($p = 0.03$). No documentation of Gilbert-Meulengracht syndrome as IF of bilirubin was found.

3.5 | Comparison of MELD, ALT and ACP as screening tools

ALT was available for 782 (66%) of the 1183 patients and clinically relevant elevation present in 43 (4%). Of these, 23 (53%) had a MELD Score ≥ 7.5 and a liver or bile diagnosis documented for 19 (83%).

ACP was calculable for 638 (54%) patients, the most often missing parameter was albumin (522, 44%). The median ACP was 3 (3–9). Of six patients (0.9%) with an ACP ≥ 7 , indicating possible liver disease, all had a MELD score ≥ 7.5 (median 19.2 (13.7–31.2)). Three patients had documented liver or bile diagnoses/symptoms.

Figure 6 compares the percentage of patients identified by the different screening tools who potentially require drug adjustment to liver function. The interrater reliability was almost perfect ($\kappa = 0.83$, $p < 0.001$) for MELD/MELD-Na, but only slight agreement ($\kappa < 0.2$) was found for MELD/ACP or MELD/ALT ($p < 0.001$; $p = 0.5$ respectively).

TABLE 1 Patient characteristics and results stratified for predefined MELD ranges

Categories	Overall	MELD 6-< 7.5	MELD 7.5-< 10	MELD 10-<15	MELD ≥15
No. of patients	761	426	164	105	66
Male (n, %)	536 (70%)	262 (62%)	135 (82%)	83 (79%)	56 (85%)
Age [years]	64 (18–98)	62 (18–98)	66 (20–91)	72 (25–90)	63 (21–92)
Hepatic/biliary diagnoses and symptoms ^a	n.a. ^b	n.a. ^b	n (%)	n (%)	n (%)
Patients with at least one diagnosis	–	–	63 (38%)	40 (38%)	19 (29%)
Diseases of the gall bladder or bile duct	–	–	36 (22%)	40 (38%)	25 (38%)
Neoplasm of the liver	–	–	36 (22%)	18 (17%)	2 (3%)
Liver cirrhosis	–	–	15 (9%)	7 (7%)	8 (12%)
Hepatitides	–	–	14 (9%)	7 (7%)	7 (11%)
Liver resection	–	–	11 (7%)	7 (7%)	0
Post liver transplantation	–	–	6 (4%)	2 (2%)	1 (2%)
Oesophageal varices	–	–	4 (2%)	6 (6%)	5 (8%)
Portal vein thrombosis	–	–	2 (1%)	0	3 (5%)
Fatty liver	–	–	2 (1%)	4 (4%)	0
Hepatic encephalopathy	–	–	2 (1%)	1 (1%)	0
Ascites	–	–	0	0	5 (8%)
Portal hypertensive gastropathy	–	–	0	3 (3%)	2 (3%)
Other ^c	–	–	4 (2%)	3 (3%)	8 (12%)
ALT 3 times > ULN ^d (n, %)	42 (6%)	19 (4%)	12 (7%)	8 (8%)	3 (5%)
Renal function (classified by KDIGO) ^e	n (%)	n (%)	n (%) ^f	n (%) ^f	n (%)
G1	345 (45%)	279 (65%)	51 (31%)	12 (11%)	3 (5%)
G2	242 (32%)	135 (32%)	79 (48%)	25 (24%)	3 (5%)
G3a	76 (10%)	12 (3%)	30 (18%)	29 (28%)	5 (7%)
G3b	42 (6%)	0	3 (2%)	32 (30%)	7 (11%)
G4	22 (3%)	0	0	6 (6%)	16 (24%)
G5	32 (4%)	0	0	0	32 (48%)
Interfering factors	n (%)	n (%)	n (%)	n (%)	n (%)
Renal insufficiency (≤ G3a)*	172 (23%)	12 (3%)	33 (20%)	67 (64%)	60 (91%)
DECL ^{g,*}	33 (4%)	10 (2%)	5 (3%)	11 (10%)	7 (11%)
Drugs elevating INR ^{h,*}	105 (14%)	28 (7%)	33 (20%)	27 (26%)	17 (26%)

^aonly assessed for patients with MELD ≥ 7.5 at admission; more than one diagnosis per patient possible.

^bn.a.: not applicable.

^cother diagnoses/symptoms were: Echinococcus multilocularis, liver fibrosis, hepatic cavernoma, portal hypertension, liver cyst, hepatopathy, icterus, liver failure, portal vein closure, hepatorenal syndrome, hepatomegaly, liver atrophy.

^dULN: upper limit of normal.

^erenal function (classified by KDIGO), eGFR: estimated glomerular filtration rate.

G1: eGFR ≥ 90 ml/min/1.73m²

G2: eGFR 60–89 ml/min/1.73m²

G3a: eGFR 45–59 ml/min/1.73m²

G3b: eGFR 30–44 ml/min/1.73m²

G4: eGFR 15–29 ml/min/1.73m²

G5: eGFR < 15 ml/min/1.73m²

^feGFR missing for one patient.

^gDECL: drugs elevating creatinine levels.

^hINR: International Normalized Ratio.

*Presence of all interfering factors significantly elevated MELD (RI $p < 0.001$; DECL $p < 0.001$; drugs elevating INR $p < 0.001$).

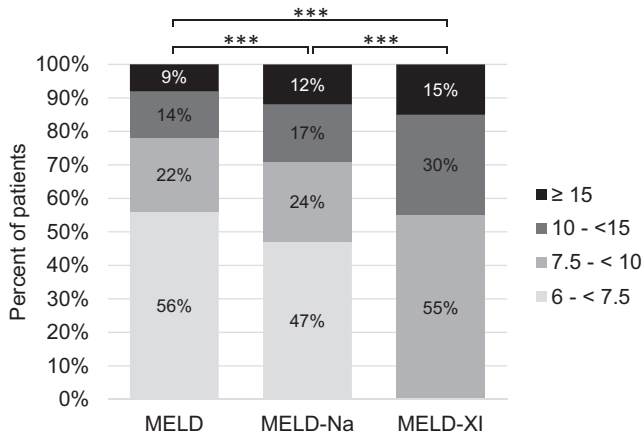


FIGURE 3 Distribution of patients to predefined MELD ranges for the different MELD scores (MELD $n = 761$; MELD-Na $n = 757$; MELD-Xi $n = 763$; *** $p < 0.001$; Friedman test with Bonferroni post hoc test)

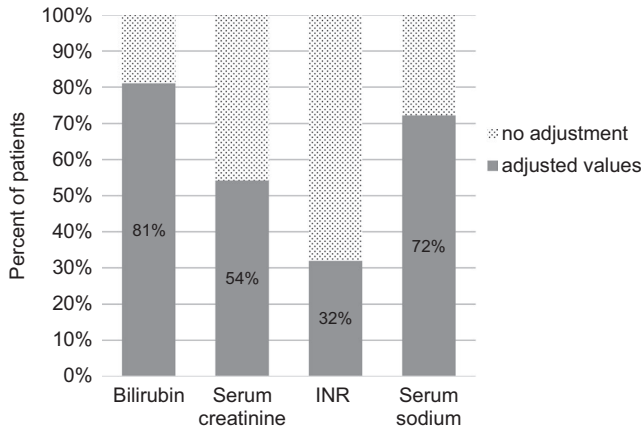


FIGURE 4 Need for adjustment of MELD parameters to standard values (number of patients $n = 761$)

4 | DISCUSSION

4.1 | Summary of findings

To our knowledge, this is the first study systematically evaluating the feasibility of MELD as an automatic screening tool for HI at hospital admission and determining conditions for its use in routine care for drug adjustment. We found (1) MELD parameters were available and MELD calculable for 64% of surgical patients at hospital admission, but, (2) adjustment of MELD parameters to standard values for correct calculation was necessary in over 90%. Further (3), renal insufficiency and intake of INR-elevating drugs were prominent interfering factors for MELD parameters. As clinical consequence (4), for 23% of the patients MELD scores corresponding to CPS-B/C potentially needing drug adjustment to liver function were found. Finally (5), the alternative screening tools ACP and ALT will most likely underestimate HI as risk factor for drug safety, while MELD-Na and MELD-Xi are not suitable because of unknown clinical interpretation of their results.

4.2 | Parameter adjustment and interfering factors

Appropriate adjustment of MELD parameters to standard values is necessary to avoid falsified scores.¹⁹ Here, adjustment was needed for an unexpected high number (91%) of patients. This is an important finding, since previous studies recommending MELD as a prediction tool did not stress this point.^{18,23,25,30}

Moreover, attention to IF for SCrea and INR is important. Most prominently, RI has to be considered as it concerns about 20% of hospitalized patients.⁴²⁻⁴⁴ In automatic calculation, patients with RI will display in higher MELD ranges, and, therefore, renal diagnoses have to be checked. SCrea is not ideal to determine renal function in patients with HI. Cystatin-C was investigated as a more reliable

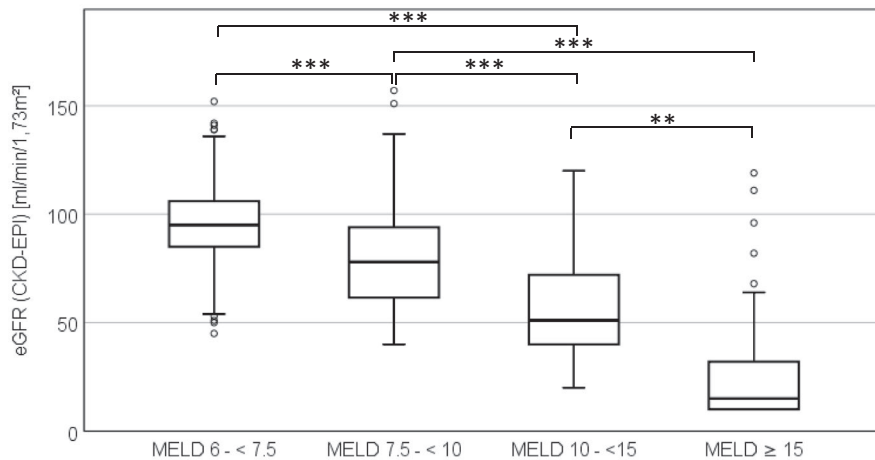


FIGURE 5 Renal function (eGFR in ml/min/1.73 m²) as interfering factor of MELD calculation stratified for predefined MELD ranges (overall $n = 761$; MELD 6 - <7.5 $n = 426$; 7.5 - <10 $n = 164$; 10 - <15 $n = 105$; ≥15 $n = 66$; ** $p < 0.01$, *** $p < 0.001$; Kruskal-Wallis test with Bonferroni post hoc test)

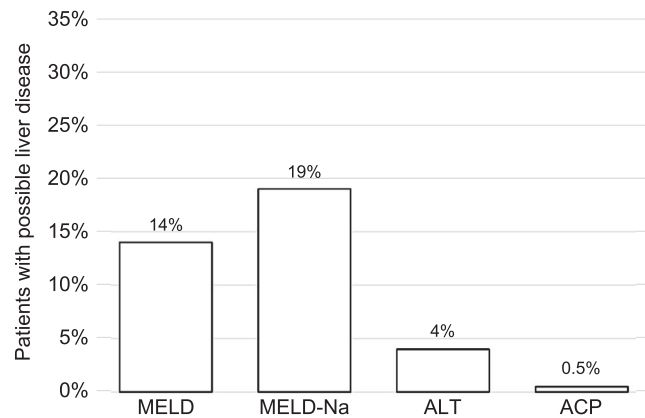


FIGURE 6 Percentage of patients possibly requiring drug adjustment to liver function identified by screening with MELD, MELD-Na, clinically relevant elevated ALT (threefold >ULN) and ACP referred to all admitted patients ($n = 1183$). Interrater reliability: $\kappa = 0.83$ ($p < 0.001$) for MELD and MELD-Na; $\kappa < 0.2$ for MELD to ACP ($p < 0.001$) or ALT ($p = 0.5$)

parameter.^{45,46} We suggest to first check for renal diagnoses and, if needed, consider cystatin-C measurement when MELD screening identified a patient for further evaluation.

In addition, intake of INR-elevating drugs was identified to be a relevant IF. For patients on DOAC or VKA, MELD-Xi could be considered but resulted in markedly higher scores compared to MELD or MELD-Na. Currently, it is unknown, how these findings should be interpreted for HI screening and, subsequently, for drug adjustment to liver function. Thus, at the moment we consider MELD-Xi as not suitable for screening for patients with HI.

For Gilbert-Meulengracht syndrome as possible IF, no documented diagnosis was found, but undiagnosed cases might have occurred and could be revealed by automatic MELD screening. DECL were only taken by 4% of the study patients. Effects of these drugs on SCrea levels will be prominent at start of therapy, and the absolute impact remains unclear.²⁶ Thus, we consider intake of DECL as neglectable for MELD screening.

4.3 | Clinical interpretation of MELD screening

The sensitivity and specificity of MELD as a screening tool for HI remain to be determined. This task is challenging since data on the prevalence of HI in hospitalized patients are still sparse and chronic liver disease is judged to be heavily underestimated. It often develops silently, and up to 50% of cirrhosis cases are discovered by chance, for example at hospital admission.^{11,47,48} Autopsy studies indicate that the prevalence of cirrhosis in the general population ranges from 4.5% to 9.5%.⁴⁹ The need for drug adjustment will start with fibrotic rebuilding of the liver and be necessary in cirrhosis.⁵⁰ Inappropriate adjustment of drug therapy to liver function has repeatedly been reported in hospitalized patients with HI.^{3,20} We found contraindicated drugs and inappropriate dosage adjustment in 2% and 3% of surgical patients admitted to hospital respectively.⁵¹

In this study, in patients with MELD ≥ 7.5 bile or liver diagnoses were documented for 36% which corresponds to 10% referred to all patients. However, the real number might be higher since we did only search for the diagnoses in this subgroup. In addition, we suspect incomplete documentation and/or unknown liver disease to be of importance. Despite doubts concerning the use of CPS for drug adjustment to liver function, this is still the standard.^{2,14,15} The possibility to set MELD ranges to corresponding CPS classes is an advantage for its use as screening tool. In our patient cohort, 23% of those with calculable MELD achieved scores corresponding to CPS classes B and C. Referred to all admitted patients, this concerned 14% who would appear for further drug evaluation by a pharmacist when implementing automatic MELD screening. While MELD-Na identified more patients when using the same correlation of MELD ranges to CPS, this correlation has not been proofed yet.

4.4 | Comparison to alternative screening tools

There was low agreement in identification of patients with possible HI and need of drug adjustment between screening by MELD and the alternative tools ACP and ALT. Sensitivity of ACP seems to be low. ALT has been correlated with hepatic inflammation, but not the stage of fibrosis and importance of even slightly elevated values is increasingly discussed.¹¹ In our study, 103 patients with documented bile or liver diagnoses and MELD ≥ 7.5 would have been missed by ALT screening. However, approximately 20% of all patients have elevated LLP without known liver disease, but only about 1% of those develop a hepatic disease within the next few years.⁵² In a previous study, we found clinically relevant elevated LLP in 11% of surgical patients at hospital admission.⁵¹

4.5 | Limitations and future research

Limitations are the retrospective design, incomplete documentation of liver/bile diagnoses and unavailability of laboratory parameters. Especially, availability of bilirubin was a limiting factor, since routine measurement is not requested for preoperative evaluation so far.⁵³ No clinical outcome has been considered in this study, since the focus was on the evaluation of MELD as a screening tool and assessment of IF. Prospective studies are planned to clarify the reliability of MELD screening to identify HI patients and the subsequent need to adjust drug therapy to liver function.

5 | CONCLUSION

In summary, MELD can be used as a screening tool for HI as risk of drug safety at hospital admission when appropriately considering correct parameter adjustment for calculation and RI and INR-elevating drugs as interfering factors. More data are needed to evaluate the sensitivity and specificity to identify patients in need

of medication adjustment. Since MELD scores can be related to corresponding CPS classes for drug adjustment purposes, use of MELD can be an important tool to increase drug safety.

ACKNOWLEDGEMENT

This work was supported by the interprofessional Doctoral Program Clinical Pharmacy, Ludwig-Maximilians-University Munich, Germany and contains parts of the doctoral thesis of Kathrin Golla. Open access funding enabled and organized by ProjektDEAL.

CONFLICTS OF INTEREST

The authors declare that they have no competing interests.

PATIENT CONSENT

Because of the retrospective design, patient informed consent was not requested and not obtained.

PERMISSION TO REPRODUCE MATERIAL FROM OTHER SOURCES

Not applicable.

DATA AVAILABILITY STATEMENT

The datasets used and/or analysed during the current study are available from the corresponding author on reasonable request.

ORCID

Kathrin Golla  <https://orcid.org/0000-0003-2592-4915>

Andreas Benesic  <https://orcid.org/0000-0001-8387-1319>

Dorothea Strobach  <https://orcid.org/0000-0003-2871-0605>

REFERENCES

1. Delcò F, Tchambaz L, Schlienger R, Drewe J, Krähenbühl S. Dose Adjustment in patients with liver disease. *Drug Saf.* 2005;28(6):529-545. doi:10.2165/0002018-200528060-00005
2. Verbeeck RK. Pharmacokinetics and dosage adjustment in patients with hepatic dysfunction. *Eur J Clin Pharmacol.* 2008;64:1147-1161. doi:10.1007/s00228-008-0553-z
3. Franz CC, Hildbrand C, Born C, Egger S, Rätz Bravo AE, Krähenbühl S. Dose adjustment in patients with liver cirrhosis: impact on adverse drug reactions and hospitalizations. *Eur J Clin Pharmacol.* 2013;69:1565-1573. doi:10.1007/s00228-013-1502-z
4. Onder G, Petrovic M, Tangiisuran B, et al. Development and validation of a score to assess risk of adverse drug reactions among in-hospital patients 65 years or older: the GerontoNet ADR risk score. *Arch Intern Med.* 2010;170(13):1142-1148. doi:10.1001/archinternmed.2010.153
5. Parameswaran Nair N, Chalmers L, Peterson GM, Bereznicki BJ, Castolino RL, Bereznicki LR. Hospitalization in older patients due to adverse drug reactions - the need for a prediction tool. *Clin Interventions Aging.* 2016;11:497-505. doi:10.2147/2FCIA.S99097
6. Corsonello A, Pedone C, Incalzi RA. Age-related pharmacokinetic and pharmacodynamic changes and related risk of adverse drug reactions. *Curr Med Chem.* 2010;17(6):571-584. doi:10.2174/092986710790416326
7. Guignard B, Bonnabry P, Perrier A, Dayer P, Desmeules J, Samer CF. Drug-related problems identification in general internal medicine: the impact and role of the clinical pharmacist and pharmacologist. *Eur J Intern Med.* 2015;26(6):399-406. doi:10.1016/j.ejim.2015.05.012
8. McConachie SM, Raub JN, Yost R, Monday L, Agrawal S, Tannous P. Evaluation of a multidisciplinary approach to reduce internal medicine readmissions using a readmission prediction index. *Am J Health-Syst Pharm.* 2020;77:950-957. doi:10.1093/ajhp/zxaa078
9. Vaja R, Rana M. Drugs and the liver. *Anaesthesia and Intensive Care Medicine.* 2020;21(10):517-523. doi:10.1016/j.mpaic.2020.07.001
10. Friedman LS. Approach to the patient with abnormal liver biochemical and function tests. In: Post TW, ed. UpToDate. UpToDate; 2020. Accessed December 01, 2020. <https://www.uptodate.com/contents/approach-to-the-patient-with-abnormal-liver-biochemical-and-function-tests>
11. Marcellin P, Kutala BK. Liver diseases: a major, neglected global public health problem requiring urgent actions and large-scale screening. *Liver Int.* 2018;38(suppl 1):2-6. doi:10.1111/liv.13682
12. Wedemeyer H, Hofmann WP, Lueth S, et al. ALT als Screeningparameter für Lebererkrankungen: eine kritische Evaluation der Evidenz. *Z Gastroenterol.* 2010;48:46-55. doi:10.1055/s-0028-1109980
13. Goldberg E, Chopra S. Cirrhosis in adults: overview of complications, general management, and prognosis. In: Post TW, ed. UpToDate. UpToDate; 2020. Accessed December 01, 2020. <https://www.uptodate.com/contents/cirrhosis-in-adults-overview-of-complications-general-management-and-prognosis>
14. European Medicines Agency. Guideline on the evaluation of the pharmacokinetics of medicinal products in patients with impaired hepatic function. http://www.ema.europa.eu/docs/en_GB/document_library/Scientific_guideline/2009/09/WC500003122.pdf. Accessed December 04, 2020.
15. Food and Drug Administration. Guidance for Industry. Pharmacokinetics in Patients with Impaired Hepatic Function: Study Design, Data Analysis, and Impact on Dosing and Labeling. <https://www.fda.gov/media/71311/download>. Accessed December 04, 2020.
16. Abbas N, Makker J, Abbas H, Balar B. Perioperative care of patients with liver cirrhosis: a review. *Health Serv Insights.* 2017;24(10):1178632917691270. doi:10.1177/1178632917691270
17. Albarmawi A, Czock D, Gauss A, et al. CYP3A activity in severe liver cirrhosis correlates with Child-Pugh and model for end-stage liver disease (MELD) scores. *Br J Clin Pharmacol.* 2013;77(1):160-169. doi:10.1111/bcp.12182
18. Antunes AG, Teixeira C, Vaz AM, et al. Comparison of the prognostic value of Chronic Liver Failure Consortium scores and traditional models for predicting mortality in patients with cirrhosis. *Gastroenterol Hepatol.* 2017;40(4):276-285. doi:10.1016/j.gastrohep.2017.01.001
19. Bambha K, Kamath PS. Model for End-stage Liver Disease (MELD). In: Post TW, ed. UpToDate. UpToDate; 2021. Accessed April 29, 2021. <https://www.uptodate.com/contents/model-for-end-stage-liver-disease-meld>
20. Perriñez Párraga L, Bosch PV, Martínez-López I, Delgado Sánchez O, Martínez Sotelo J, Calleja Hernández MA. Evaluation of pharmaceutical intervention in patients with hepatic insufficiency in a hospital setting. *Gastroenterol Hepatol Open Access.* 2018;9(6):241-247. doi:10.15406/ghoa.2018.09.00335
21. About MELD and PELD. Organ Procurement and Transplantation Network (OPTN). Organ Procurement and Transplantation Network (OPTN) website. Accessed April 29, 2021. <https://optn.transplant.hrsa.gov/data/allocation-calculators/about-meld-and-peld/>
22. Heuman DM, Mihas AA, Habib A, et al. MELD-XI: a rational approach to "sickest first" liver transplantation in cirrhotic patients requiring anticoagulant therapy. *Liver Transpl.* 2007;13:30-37. doi:10.1002/lt.20906
23. Causey MW, Nelson D, Johnson EK, et al. The impact of Model for End-Stage Liver Disease-Na in predicting morbidity and mortality following elective colon cancer surgery irrespective of underlying

- liver disease. *Am J Surg*. 2014;207:520-526. doi:10.1016/j.amjsurg.2013.06.008
24. Cramer JD, Patel UA, Samant S, Yang A, Smith SS. Liver disease in patients undergoing head and neck surgery: Incidence and risk for postoperative complications. *Laryngoscope*. 2017;127:102-109. doi:10.1002/lary.26044
 25. Roth JA, Chrobak C, Schädelin S, Hug BL. MELD score as a predictor of mortality, length of hospital stay, and disease burden. *Medicine*. 2017;96:24. doi:10.1097/MD.00000000000007155
 26. Inker LA, Perrone RD. Drugs that elevate the serum creatinine concentration. In: Post TW, ed. UpToDate. UpToDate; 2020. Accessed December 01, 2020. <https://www.uptodate.com/contents/drugs-that-elevate-the-serum-creatinine-concentration>
 27. Pollack CV. Coagulation assessment with the new generation of oral anticoagulants. *Emerg Med J*. 2016;33:423-430. doi:10.1136/emered-2015-204891
 28. Rondon H, Hyponatremia BM. In: StatPearls [Internet]. Treasure Island (FL): StatPearls Publishing; January 25, 2021. Accessed April 29, 2021. <https://www.ncbi.nlm.nih.gov/books/NBK470386/>
 29. Roy-Chowdhury N, Roy-Chowdhury J, Wang X. Gilbert syndrome and unconjugated hyperbilirubinemia due to bilirubin overproduction. In: Post TW, ed. UpToDate. UpToDate; 2021. Accessed November 29, 2021. <https://www.uptodate.com/contents/gilbert-syndrome-and-unconjugated-hyperbilirubinemia-due-to-bilirubin-overproduction>
 30. Rostved AA, Lundgren JD, Hillingsø J, Peters L, Mocroft A, Rasmussen A. MELD score measured day 10 after orthotopic liver transplantation predicts death and retransplantation within the first year. *Scand J Gastroenterol*. 2016;51(11):1360-1366. doi:10.1080/00365521.2016.1196497
 31. Murata M, Kato TS, Kuwaki K, Yamamoto T, Dohi S, Amano A. Preoperative hepatic dysfunction could predict postoperative mortality and morbidity in patients undergoing cardiac surgery: Utilization of the MELD scoring system. *Int J Cardiol*. 2016;203:682-689. doi:10.1016/j.ijcard.2015.10.181
 32. *Organ Procurement and Transplantation Network (OPTN). Organ Procurement and Transplantation Network (OPTN) Policies*. Accessed April 29 2021. https://optn.transplant.hrsa.gov/media/1200/optn_policies.pdf
 33. Kidney Disease: Improving Global Outcomes (KDIGO) CKD Work Group. KDIGO 2012 Clinical Practice Guideline for the Evaluation and Management of Chronic Kidney Disease. *Kidney Int Suppl*. 2021;2013(3):1-150. Accessed December 09. https://kdigo.org/wp-content/uploads/2017/02/KDIGO_2012_CKD_GL.pdf
 34. Pollak PT, Sharma AD, Carruthers SG. Creatinine elevation in patients receiving amiodarone correlates with serum amiodarone concentration. *Br J Clin Pharmacol*. 1993;36:125-127. doi:10.1111/j.1365-2125.1993.tb04207.x
 35. Opravil M, Keusch G, Lüthy R. Pyrimethamine inhibits renal secretion of creatinine. *Antimicrob Agents Chemother*. 1993;37(5):1056-1060. doi:10.1128/aac.37.5.1056
 36. Maggi P, Montinaro V, Rusconi S, et al. The problem of renal function monitoring in patients treated with the novel antiretroviral drugs. *HIV Clin Trials*. 2014;15(3):87-91. doi:10.1310/hct1503-87
 37. Broeders N, Knoop C, Antoine M, Tielemans C, Abramowicz D. Fibrate-induced increase in blood urea and creatinine: is gemfibrozil the only innocuous agent? *Nephrol Dial Transplant*. 2000;15(12):1993-1999. doi:10.1093/ndt/15.12.1993
 38. Giboney PT. Mildly elevated liver transaminase levels in the asymptomatic patient. *Am Fam Physician*. 2005;71(6):1105-1110. <https://pubmed.ncbi.nlm.nih.gov/15791889/>. Accessed December 06, 2021.
 39. Kwo PY, Cohen SM, Lim JK. ACG clinical guideline: evaluation of abnormal liver chemistries. *Am J Gastroenterol*. 2016;112:18-35. doi:10.1038/ajg.2016.517
 40. Cohen J. A coefficient of agreement for nominal scales. *Educ Psychol Meas*. 1960;20(1):37-46. doi:10.1177/001316446002000104
 41. Landis JR, Koch GG. The measurement of observer agreement for categorical data. *Biometrics*. 1977;33(1):159-174. doi:10.2307/2529310
 42. Seiberth S, Bauer D, Schönermarck U, et al. Correct use of non-indexed eGFR for drug dosing and renal drug-related problems at hospital admission. *Eur J Clin Pharmacol*. 2020;76:1683-1693. doi:10.1007/s00228-020-02953-6
 43. Blix HS, Viktil KK, Moger TA, Reikvam A. Use of renal risk drugs in hospitalized patients with impaired renal function—an underestimated problem? *Nephrol Dial Transplant*. 2006;21(11):3164-3171. doi:10.1093/ndt/gfl399
 44. Hartmann B, Czock D, Keller F. Drug therapy in patients with chronic renal failure. *Dtsch Arztebl Int*. 2010;107(37):647-655. <https://pubmed.ncbi.nlm.nih.gov/20959896/>. Accessed December 09, 2021.
 45. Slack A, Yeoman A, Wendon J. Renal dysfunction in chronic liver disease. *Crit Care*. 2010;14(2):214. doi:10.1186/cc8855
 46. Markwardt D, Holdt L, Steib C, et al. Plasma cystatin C is a predictor of renal dysfunction, acute-on-chronic liver failure, and mortality in patients with acutely decompensated liver cirrhosis. *Hepatology*. 2017;66(4):1232-1241. doi:10.1002/hep.29290
 47. Härmälä S, O'Brien A, Parisinos CA, Direk K, Shallcross L, Hayward A. Development and validation of a prediction model to estimate the risk of liver cirrhosis in primary care patients with abnormal liver blood test results: protocol for an electronic health record study in Clinical Practice Research Datalink. *Diagn Progn Res*. 2019;3:10. doi:10.1186/s41512-019-0056-7
 48. Doycheva I, Watt KD, Rifai G, et al. Increasing burden of chronic liver disease among adolescents and young adults in the USA: a silent epidemic. *Dig Dis Sci*. 2017;62(5):1373-1380. doi:10.1007/s10620-017-4492-3
 49. Starczewska MH, Mon W, Shirley P. Anaesthesia in patients with liver disease. *Curr Opin Anaesthesiol*. 2017;30(3):392-398. doi:10.1097/ACO.0000000000000470
 50. Talal AH, Venuto CS, Younis I. Assessment of hepatic impairment and implications for pharmacokinetics of substance use treatment. *Clin Pharmacol Drug Dev*. 2017;6(2):206-212. doi:10.1002/cpdd.336
 51. Strobach D, Poppele A, Mannell H, Andraschko M, Schiek S, Bertsche T. Screening for impaired liver function as a risk factor for drug safety at hospital admission of surgical patients. *Int J Clin Pharm*. 2020;42:124-131. doi:10.1007/s11096-019-00948-7
 52. Donnan PT, McLernon D, Dillon JF, et al. Development of a decision support tool for primary care management of patients with abnormal liver function tests without clinically apparent liver disease: a record-linkage population cohort study and decision analysis (ALFIE). *Health Technol Assess*. 2009;13(25):1-172. doi:10.3310/hta13250
 53. *AnästH Intensivmed*. Gemeinsame Empfehlung der DGAI, DGCH und DGIM. Präoperative Evaluation erwachsener Patienten vor elektiven, nicht herz-thoraxchirurgischen Eingriffen. 2017;58:349-364. doi:10.19224/ai2017.349
 54. Wiesner R, Edwards E, Freeman R, et al. Model for End-Stage Liver Disease (MELD) and Allocation of Donor Livers. *Gastroenterology*. 2003;124:91-96. doi:10.1053/gast.2003.50016

How to cite this article: Golla K, Mannell H, Benesic A, Dreischulte T, Grill E, Strobach D. Feasibility of the MELD score as a screening tool for pharmacists to identify patients with impaired hepatic function at hospital admission. *J Clin Pharm Ther*. 2022;00:1-9. doi:[10.1111/jcpt.13597](https://doi.org/10.1111/jcpt.13597)