

The Role of Silicon-Based Nanofillers and Polymer Crystallization on the Breakdown Behaviors of Polyethylene Blend Nanocomposites

Siti Noorhazirah Kamarudin*, Kwan Yiew Lau^{*,‡}, Chee Wei Tan*
and Kuan Yong Ching[†]

**School of Electrical Engineering
Universiti Teknologi Malaysia
Johor Bahru 81310, Malaysia*

*†University of Reading Malaysia
Iskandar Puteri 79200, Malaysia*

‡kwanyiew@utm.my

Received 10 March 2020

Accepted 25 May 2020

Published 12 August 2020

Good breakdown strength is an important feature for the selection of dielectric materials, especially in high-voltage engineering. Although nanocomposites have been shown to possess many promising dielectric properties, the breakdown strength of nanocomposites is often found to be negatively affected. Recently, imposing nonisothermal crystallization processes on polyethylene blends has been demonstrated to be favorable for breakdown strength improvements of dielectric materials. In an attempt to increase nanocomposites' voltage rating, this work reports on the effects of nonisothermal crystallization (fast, moderate and slow crystallizations) on the structure and dielectric properties of a polyethylene blend (PE) composed of 80% low density polyethylene and 20% high density polyethylene, added with silicon dioxide (SiO_2) and silicon nitride (Si_3N_4) nanofillers. Through breakdown testing, the breakdown performance of Si_3N_4 -based nanocomposites was better than SiO_2 -based nanocomposites. Since nanofiller dispersion within both nanocomposite systems was comparable, the enhanced breakdown performance of Si_3N_4 -based nanocomposites is attributed to the surface chemistry of Si_3N_4 containing less hydroxyl groups than SiO_2 . Furthermore, the breakdown strength of SiO_2 -based nanocomposites and Si_3N_4 -based nanocomposites improved, with the DC breakdown strength increasing by at least 12% when both the nanocomposites were subjected to moderate crystallization rather than fast and slow crystallizations. This is attributed to changes in the underlying molecular conformation of PE in addition to water-related effects. These results suggest that apart from changes in the nanofiller surface chemistry, changes in the underlying molecular conformation of polymers are also important to improve the breakdown performance of nanocomposites.

Keywords: Nanocomposites; silicon dioxide; silicon nitride; polyethylene; crystallization; breakdown.

[‡]Corresponding author.

1. Introduction

Investigations of polymer nanocomposites as high voltage dielectric materials have increased tremendously over the last two decades. Since the introduction of the concept of dielectric nanocomposites, various nanocomposite materials have been explored, and these materials have been shown to possess promising dielectric properties such as those related to permittivity, partial discharge, space charge and breakdown strength.¹⁻⁴ For example, Nelson *et al.*⁵ discovered mitigated space charge accumulation and enhanced charge decay in epoxy/titania nanocomposites, which could lead to improved breakdown strength of the nanocomposites. Meanwhile, Okozumi *et al.*⁶ found that the volume resistivity and the breakdown strength of polyethylene nanocomposites increased with the addition of magnesium oxide nanofiller. These improved dielectric behaviors of nanocomposites have often been attributed to the appropriate use and good dispersion of nanoparticles, in addition to favorable nanoparticle/polymer interactions.^{7,8} These are much related to the presence of the interface within nanocomposites.⁹

In any dielectric, breakdown strength is an important dielectric parameter that determines the maximum electric field magnitude that the dielectric can withstand without failure. It is commonly expressed by the maximum voltage before failure divided by the thickness of the dielectric. Although the breakdown strength of polymers can be improved with the addition of nanoparticles to polymers, the breakdown properties can otherwise become inferior if interfacial mechanisms within nanocomposites are not properly dealt with. For example, reduced breakdown strength of polyethylene was reported with the addition of silicon dioxide (SiO₂), silicon nitride (Si₃N₄), and aluminum nitride (AlN) nanoparticles to polyethylene under ambient conditions.¹⁰ This is mainly caused by the presence of moisture on the surface of nanofillers, which subsequently resides on the interface of nanocomposites, thus leading to inferior dielectric properties.^{11,12} Meanwhile, the breakdown strength can also decrease with increasing amounts of nanoparticles due to nanoparticles agglomeration effects.¹³⁻¹⁵ These negative breakdown effects indicate that the addition of nanoparticles to polymers may not always enhance the breakdown strength of the materials, and that fundamental challenges

regarding the breakdown behaviors of nanocomposites need to be addressed.

According to Green and Vaughan,¹⁶ dielectric mechanisms of nanocomposites require exploration into various factors, which include nanoparticle dispersion, nanoparticle/polymer interactions, interactions between nanoparticles, properties of the base polymer, and molecular conformations. Significantly, an in-depth understanding of the underlying physics and chemistry governing changes in dielectric properties of nanocomposites needs to be sought after. To date, many research works on nanocomposites attempt to explain the mechanisms of nanocomposites through the use of single polymers as the matrices for nanocomposites. Nevertheless, Hosier *et al.*^{17,18} demonstrated that the use of a polyethylene blend system had many advantages over a single polymer system. The breakdown strength of a polyethylene blend composed of 80% low density polyethylene (LDPE) and 20% high density polyethylene (HDPE) was reported to be the highest when the material was isothermally crystallized at 115°C.¹⁷ This was attributed to the open banded spherulitic structures composed of extensive isothermal lamellae (HDPE-rich phase) that were separated from each other by regions of quenched matrix (LDPE-rich phase). In addition, recent research work indicated that the use of polyethylene blend composed of 80% LDPE and 20% HDPE as the base polymer for nanocomposites allowed the control of the underlying polymer morphology.^{19,20} This enabled structural changes of the base polymer to be readily detected, provided that the material was appropriately crystallized.

It is noteworthy that crystallization is a process by which, upon cooling, nuclei (crystalline), an ordered solid phase, are produced from a liquid melt, wherein small regions of the tangled and random molecular conformations become ordered and aligned in the manner of chain-folded layers. There are mainly two types of crystallizations, namely, isothermal and nonisothermal crystallizations. Generally, studies of crystallization are limited to idealized conditions, in which external conditions are constant. For example, in the work of Lau *et al.*,^{19,20} isothermal crystallization of the materials was achieved by contacting the materials with an external oil bath at fixed temperatures. In real situations, however, nonisothermal crystallization conditions are more common, in which the external conditions (e.g., cooling rates) change continuously.

This is of greater interest since industrial processes proceed generally under nonisothermal conditions. Moreover, according to Lorenzo and Silvestre,²¹ the study of crystallization in dynamic conditions may expand the general understanding of the crystallization behavior of polymers since many isothermal methods are often restricted to narrow temperature ranges.

In this regard, Green *et al.*²² considered a polyethylene blend produced using nonisothermal crystallization as a function of cooling rate. From the analysis, a nonisothermal cooling rate range between $0.5^{\circ}\text{C min}^{-1}$ and $10^{\circ}\text{C min}^{-1}$ was estimated to correspond to the isothermal temperature window between 113°C and 119°C , albeit that the morphologies of the resulting materials were different under nonisothermal and isothermal crystallization conditions. Morphological wise, at the cooling rate of $0.1^{\circ}\text{C min}^{-1}$, clear sheaf-like entities can be observed; by $10^{\circ}\text{C min}^{-1}$, the structure has given way to a more granular morphology. Their results showed that samples subjected to nonisothermal crystallization were found to possess higher breakdown strength compared to samples not subjected to crystallization. Recently, Hosier *et al.*²³ found that the use of a nonisothermally crystallized polyethylene blend resulted in higher melting temperatures, reduced electrical conductivity, better space charge performance, increased electrical breakdown strength and enhanced thermo-mechanical stability compared to conventionally crosslinked single polyethylene system. These benefits, yielded from nonisothermal crystallization of the material, indicate that more electrical power can be transmitted through the same size of a dielectric.

The aforementioned literature suggests that to increase the voltage rating of a dielectric, the use of nonisothermal crystallization processes in the presence of nanofillers may create unique properties associated not only with the multiphase materials (polyethylene blend), but also with the interface resulted from nanoinclusions. This work therefore aimed to explore the underlying physics and chemistry governing changes in dielectric properties of nanocomposites through nonisothermal crystallization processes of silicon-based polyethylene nanocomposites. A polyethylene blend, which enables the control of the material morphology through thermal treatment and possesses desirable breakdown properties that is independent of nucleation

effects caused by nanofillers,¹⁰ was selected as the base matrix. Meanwhile, silicon-based nanofillers, namely, silicon dioxide (SiO_2) and silicon nitride (Si_3N_4) were chosen as the nanofillers. The rationale behind the choice of SiO_2 and Si_3N_4 is that Si_3N_4 generally contains less water molecules than SiO_2 , where water-related effects seen in SiO_2 -based nanocomposites are less pronounced in Si_3N_4 -based nanocomposites,²⁴ such that nonisothermal crystallization processes of the two nanocomposite systems could be effectively compared.

2. Experimental

2.1. Materials and sample preparation

The base polymer used was a polyethylene blend (PE) composed of 80% LDPE (Titanlene LDF200YZ) and 20% HDPE (Titanzex HI2000), sourced from Lotte Chemical. The nanofillers used were SiO_2 nanopowder (20 nm) and Si_3N_4 nanopowder (15–30 nm), sourced from NanoAmor.

By using a Brabender mixer, PE was mixed with the desired amount (1 wt.% and 5 wt.%) of SiO_2 and Si_3N_4 at a temperature of 160°C and a rotational speed of 45 rpm for 10 min. Thin film samples ($100\ \mu\text{m}$ thick) were produced by melt-pressing through a hydraulic laboratory press at 160°C , with the samples sandwiched between two opposing Melinex films and metal plates. Later, each thin film sample was crystallized nonisothermally under fast, moderate and slow crystallizations.

After crystallization, the thin film samples were carefully removed from the Melinex films for characterization purposes. For convenience, the notation P/F-A/C is used to indicate the prepared samples, where P corresponds to the polymer, F represents the filler, A indicates the amount of filler, and C signifies the cooling condition, as shown in Table 1.

2.2. Characterization

The cooling rate of experimentally crystallized samples under fast, moderate and slow crystallizations was determined using a Fluke 52II digital thermometer. A Perkin Elmer differential scanning calorimeter (DSC) with Pyris software was used to characterize the thermal behavior of the experimentally crystallized samples. For each measurement, a 5 mg sample was used, placed in a sealed

Table 1. Sample designation.

Sample designation (P/F-A/C)	Polymer (P)	Filler (F)	Amount (A)	Cooling condition (C)
PE/SiO ₂ -1/F	PE	SiO ₂	1 wt. %	Fast
PE/SiO ₂ -5/F	PE	SiO ₂	5 wt. %	Fast
PE/Si ₃ N ₄ -1/F	PE	Si ₃ N ₄	1 wt. %	Fast
PE/Si ₃ N ₄ -5/F	PE	Si ₃ N ₄	5 wt. %	Fast
PE/SiO ₂ -1/M	PE	SiO ₂	1 wt. %	Moderate
PE/SiO ₂ -5/M	PE	SiO ₂	5 wt. %	Moderate
PE/Si ₃ N ₄ -1/M	PE	Si ₃ N ₄	1 wt. %	Moderate
PE/Si ₃ N ₄ -5/M	PE	Si ₃ N ₄	5 wt. %	Moderate
PE/SiO ₂ -1/S	PE	SiO ₂	1 wt. %	Slow
PE/SiO ₂ -5/S	PE	SiO ₂	5 wt. %	Slow
PE/Si ₃ N ₄ -1/S	PE	Si ₃ N ₄	1 wt. %	Slow
PE/Si ₃ N ₄ -5/S	PE	Si ₃ N ₄	5 wt. %	Slow

aluminum pan. The measurement was carried out under nitrogen atmosphere with a temperature range from 30°C to 160°C at 10°C min⁻¹ scan rate. Overall, an accuracy of ±1°C in temperature and ±3% in enthalpy was estimated based upon repeated measurements from a similar set of samples.

The melting enthalpy for each material was analyzed and converted into the percentage of LDPE or HDPE present in nanocomposites that was involved in each phase transition.²⁵ The degree of crystallinity (χ) of each material was then obtained by dividing the enthalpy normalized by weight with the enthalpy of 100% crystalline material, taken as 293 J g⁻¹ for polyethylene,^{26,27} as follows:

$$\chi = \frac{\Delta H}{w_f \Delta H_o} \times 100, \quad (1)$$

where ΔH is the melting enthalpy of the sample, ΔH_o is the value of enthalpy corresponding to the melting of a 100% crystalline material and w_f is the weight fraction of the crystallizable material.

A Perkin Elmer Spectrum One spectrometer with a standard temperature-stabilized mid-infrared triglycine sulfate (MIR-TGS) detector was used to collect the Fourier transform infrared (FTIR) spectra of SiO₂ and Si₃N₄ nanopowders. The FTIR spectra of SiO₂-based nanocomposites and Si₃N₄-based nanocomposites were also collected using the same instrument. The spectrum for each data was collected from 400 cm⁻¹ to 4000 cm⁻¹ over 16 scans at 4 cm⁻¹ resolution.

The morphology of the samples was characterized using JEOL JSM-6390 LV and Hitachi TM3000 Tabletop scanning electron microscopes (SEM). An accelerating voltage of 15 kV was used.

Prior to SEM, the samples were fractured under liquid nitrogen and sputter coated with gold or platinum.

Electrical breakdown testing was conducted in line with ASTM D149, by placing each sample between two 6.3 mm diameter steel ball electrodes immersed in mineral oil. For AC breakdown testing, a step voltage of 1 kV every 20 s was applied until breakdown occurred. For DC breakdown testing, a step voltage of 2 kV every 20 s was applied until breakdown occurred. Fifteen breakdown tests were conducted on each type of samples. The resulting data were analyzed using two-parameter Weibull statistics^{28,29}:

$$P(x) = 1 - \exp \left[- \left(\frac{E}{\alpha} \right)^\beta \right] \quad (2)$$

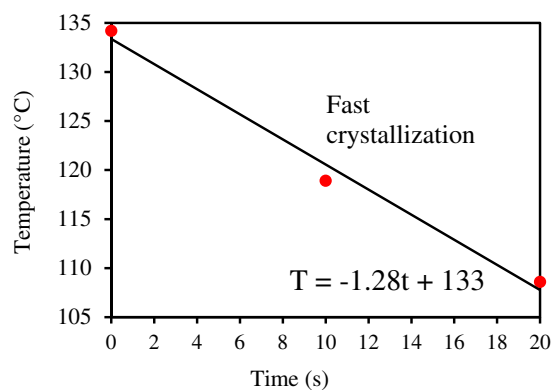
where $P(x)$ is the cumulative failure probability at E , E is the experimental electric field (kV mm⁻¹), α is the scale parameter (kV mm⁻¹) representing the breakdown strength at 63.2% probability and β is the shape parameter reflecting the data distribution.

3. Results and Discussion

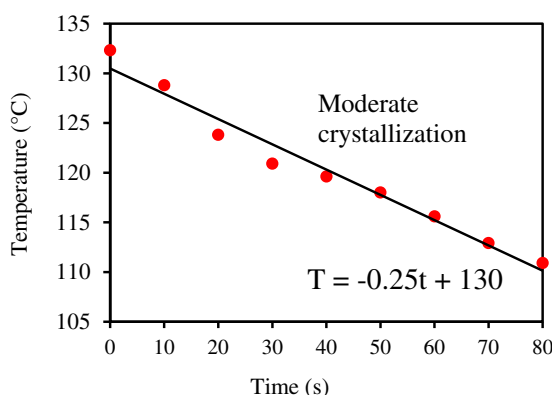
3.1. Cooling rates and melting behaviors

The representative data for measuring the cooling rates of nanocomposites containing SiO₂ and Si₃N₄ are shown in Figs. 1(a) (fast crystallization), 1(b) (moderate crystallization) and 1(c) (slow crystallization). Under a linear temperature-time relationship, the cooling rates of the experimentally crystallized samples under fast, moderate, and slow crystallizations were approximately 80°C min⁻¹ (1.28°C s⁻¹), 15°C min⁻¹ (0.25°C s⁻¹) and 1°C min⁻¹ (0.02°C s⁻¹), respectively.

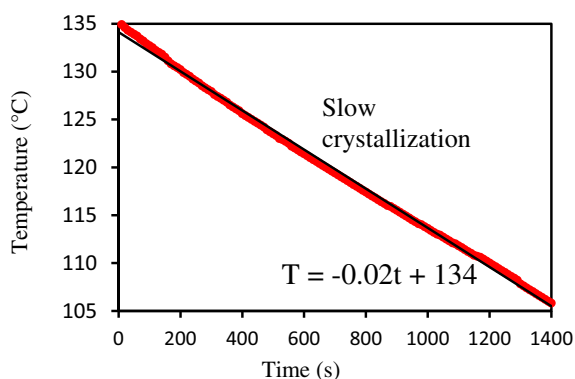
Figure 2 shows the representative melting thermograms of nanocomposites containing 1 wt.% of SiO₂ and Si₃N₄; similar melting thermograms were obtained from nanocomposites containing 5 wt.% of SiO₂ and Si₃N₄, hence not shown for brevity. The lower peak melting temperature (denoted as T_{m1}) at about 107°C is close to the melting temperature of the LDPE and is therefore associated with lamellae composed mainly of branched molecules. Meanwhile, the upper peak melting temperature (denoted as T_{m2}) at about 126°C is close to the melting temperature of the HDPE and is therefore associated with lamellae composed mainly of linear HDPE



(a)



(b)



(c)

Fig. 1. Experimentally measured cooling rates under (a) fast, (b) moderate, (c) slow crystallization conditions.

molecules. These melting behaviors reflect that of a polyethylene blend, and are in line with the published literature.^{17,18,30,31}

As the cooling rate increased, an additional peak melting temperature (denoted as T_{mx}) appeared and became more pronounced; the melting features of T_{m1} and T_{m2} generally remained unchanged.

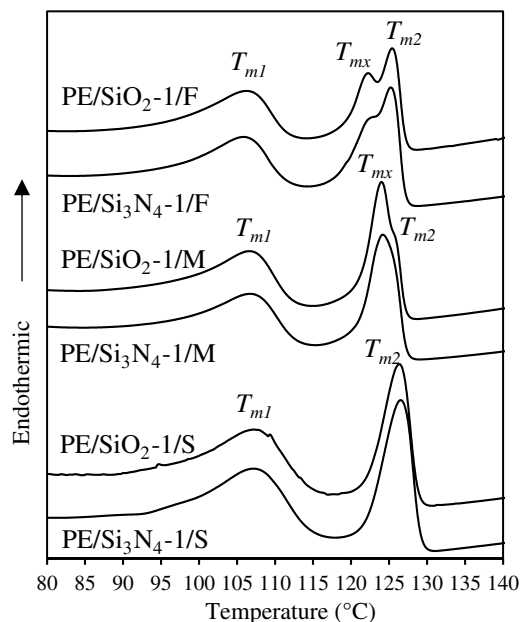


Fig. 2. Melting thermograms of nanocomposites containing 1 wt.% of SiO_2 and Si_3N_4 , when subjected to fast, moderate and slow crystallizations.

The multiple melting peaks associated with T_{m2} and T_{mx} can be related to molecular fractionation, co-crystallization, and dynamic reorganization of crystals.^{17,31} The peak of T_{mx} was about 122°C under fast crystallization, and increased to 125°C under moderate crystallization; T_{mx} was not present under slow crystallization.

Table 2 summarizes the melting temperatures for all nanocomposites under fast, moderate and slow crystallizations. From these thermal analyses, there were no appreciable differences between PE/ SiO_2 and PE/ Si_3N_4 nanocomposites. The similar melting

Table 2. Melting temperature data obtained from DSC.

Sample	Melting temperature, T_m		
	T_{m1} ($^\circ\text{C}$)	T_{m2} ($^\circ\text{C}$)	T_{mx} ($^\circ\text{C}$)
PE/ SiO_2 -1/F	107	127	122
PE/ SiO_2 -5/F	108	127	123
PE/ Si_3N_4 -1/F	107	126	122
PE/ Si_3N_4 -5/F	107	126	120
PE/ SiO_2 -1/M	107	127	125
PE/ SiO_2 -5/M	108	126	125
PE/ Si_3N_4 -1/M	108	127	125
PE/ Si_3N_4 -5/M	107	127	125
PE/ SiO_2 -1/S	108	128	—
PE/ SiO_2 -5/S	108	127	—
PE/ Si_3N_4 -1/S	108	127	—
PE/ Si_3N_4 -5/S	108	127	—

behaviors of the two nanocomposite systems indicate that for any given crystallization condition, the thickness of the lamellae was similar irrespective of the type and amount of nanofillers.

3.2. Crystallinity analysis

Table 3 summarizes the data for the melting enthalpy (ΔH) and degree of crystallinity (χ) of nanocomposites containing 1 wt.% and 5 wt.% of SiO_2 and Si_3N_4 . Since the base matrix was composed of a blend of LDPE and HDPE, and the DSC thermal traces were largely divided into these two phases, with one phase dominated by T_{m1} (representing the LDPE-rich phase) while the other phase dominated by T_{m2} and/or T_{mx} (representing the HDPE-rich phase), the crystallinity of the materials was therefore analyzed based on the LDPE-rich phase and the HDPE-rich phase.

For all the materials, the crystallinity of the LDPE-rich phase appears similar when taking into account the uncertainties in the analysis. Therefore, crystallizing the materials under fast, moderate and slow crystallizations did not affect the crystallinity of the LDPE-rich phase.

Although it appears that under each crystallization condition, the crystallinity of the HDPE-rich phase of PE/ Si_3N_4 nanocomposites was higher than PE/ SiO_2 nanocomposites, these differences lie within the uncertainties of the analysis, hence not reproducible. Rather, crystallinity analysis of the HDPE-rich phase among samples under fast, moderate and slow crystallizations reveals appreciable

Table 3. Crystallinity of LDPE-rich phase and HDPE-rich phase.

Sample	LDPE-rich phase		HDPE-rich phase	
	ΔH (J g^{-1})	χ (%)	ΔH (J g^{-1})	χ (%)
PE/ SiO_2 -1/F	14.3	6.2	25.2	43.4
PE/ SiO_2 -5/F	15.2	6.8	24.2	43.5
PE/ Si_3N_4 -1/F	13.9	6.0	26.9	46.4
PE/ Si_3N_4 -5/F	11.8	5.3	27.0	48.6
PE/ SiO_2 -1/M	14.6	6.3	26.6	45.9
PE/ SiO_2 -5/M	15.7	7.0	25.8	46.3
PE/ Si_3N_4 -1/M	14.3	6.2	27.9	48.2
PE/ Si_3N_4 -5/M	11.9	5.3	28.4	51.0
PE/ SiO_2 -1/S	14.2	6.1	24.8	42.7
PE/ SiO_2 -5/S	14.8	6.7	23.9	42.9
PE/ Si_3N_4 -1/S	14.2	6.1	26.8	46.2
PE/ Si_3N_4 -5/S	11.7	5.2	27.3	49.0

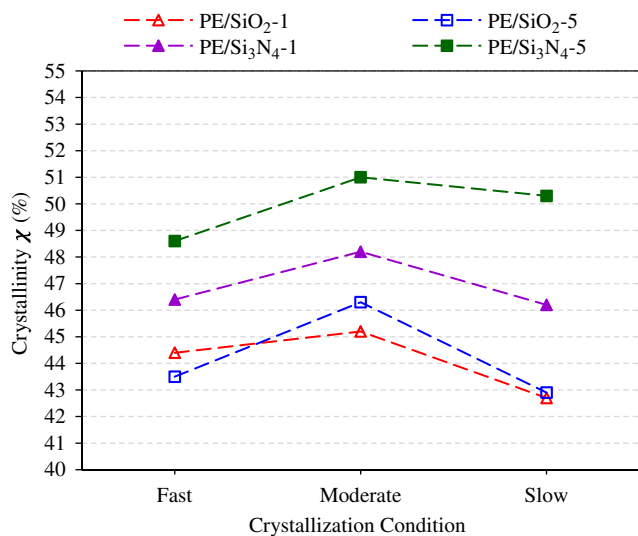


Fig. 3. Crystallinity of HDPE-rich phase for nanocomposites under fast, moderate and slow crystallizations.

differences, where the crystallinity was the highest under moderate crystallization compared to slow and fast crystallizations. This trend is largely reproducible for each material; the crystallinity of the materials under fast and slow crystallizations was largely indistinguishable. This is better illustrated in Fig. 3. This suggests that the use of different nonisothermal crystallization conditions had a notable effect on the melting behaviors of the materials (where the aforementioned “double peak” feature became more pronounced with increased cooling rates), thus affecting the crystallization kinetics and the underlying lamellar structure of the base PE.

3.3. Chemical structure

Figure 4 shows the FTIR spectra of the SiO_2 and Si_3N_4 nanopowders. For the SiO_2 nanopowder, characteristic absorption bands were observed at 1088 cm^{-1} , 800 cm^{-1} and 470 cm^{-1} , and they belong to Si–O bonds.³² Meanwhile, characteristic absorption bands at 1084 cm^{-1} , 960 cm^{-1} and 470 cm^{-1} were observed for the Si_3N_4 nanopowder, which depict the Si–O and Si–N bonds.^{33,34} Additionally, both the SiO_2 and Si_3N_4 nanopowders show a characteristic absorption band at 3400 cm^{-1} , which can be attributed to surface hydroxyl groups and associated water molecules on the surface of the nanopowders.¹⁹ Of note, the intensity at 3400 cm^{-1} was much less for Si_3N_4 than SiO_2 , indicating that the presence of water was much less on Si_3N_4 nanopowder. Since SiO_2 is prone to water

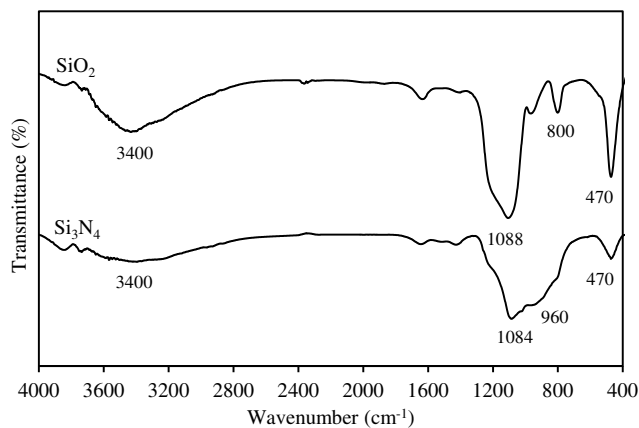


Fig. 4. FTIR spectra of SiO_2 and Si_3N_4 nanopowders.

adsorption, surface hydroxyl groups tend to be present on the surface of SiO_2 when exposed to air or water surroundings. Indeed, available literature^{10,35} shows that SiO_2 adsorbs a significant amount of water even when stored under ambient conditions, suggesting that water can readily be partitioned to polar SiO_2 surfaces; Si_3N_4 adsorbs little water compared to SiO_2 under ambient conditions. Therefore, the water adsorption effects are much less pronounced for Si_3N_4 compared to SiO_2 .

Figure 5 shows the FTIR spectra of nanocomposites containing 1 wt.% and 5 wt.% of SiO_2

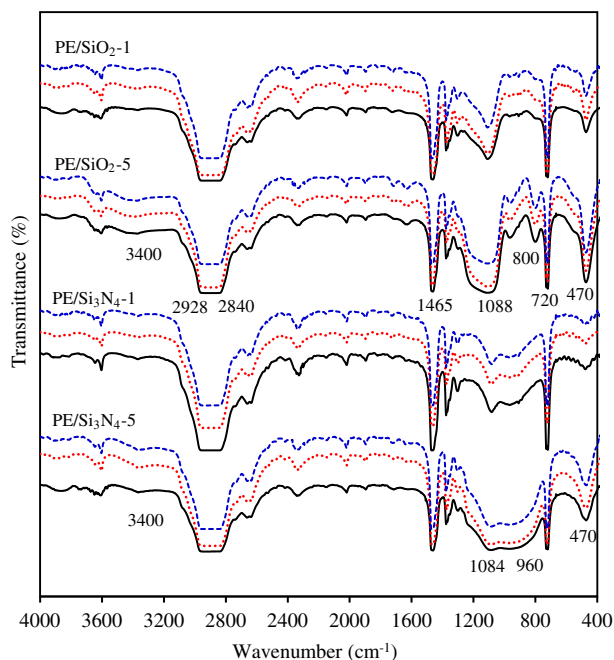


Fig. 5. FTIR spectra of nanocomposites containing 1 wt.% and 5 wt.% of SiO_2 and Si_3N_4 under fast, moderate and slow crystallizations.

and Si_3N_4 under fast, moderate and slow crystallizations. Of note, the absorption bands at $2840\text{--}2928\text{ cm}^{-1}$, 1465 cm^{-1} and 720 cm^{-1} are typical for polyethylene.³⁶ By adding 1 wt.% of SiO_2 to PE, three additional absorption bands representing SiO_2 nanopowder (as discussed in Fig. 4) can be observed at 1088 cm^{-1} , 800 cm^{-1} and 470 cm^{-1} . By increasing the amount of SiO_2 to 5 wt.%, these absorption bands became more pronounced. Meanwhile, adding 1 wt.% of Si_3N_4 to PE resulted in three absorption bands at 1084 cm^{-1} , 960 cm^{-1} and 470 cm^{-1} representing Si_3N_4 nanopowder (as discussed in Fig. 4), and these absorption bands became more pronounced at 5 wt.% Si_3N_4 . Again, a comparison of the FTIR spectra of PE/ SiO_2 nanocomposites and PE/ Si_3N_4 nanocomposites at 3400 cm^{-1} indicates that surface hydroxyl groups and associated water molecules were indeed more apparent in SiO_2 -based nanocomposites than in Si_3N_4 -based nanocomposites. Nevertheless, imposing different crystallization conditions on the nanocomposites did not result in notable changes on the chemical structure of the materials.

3.4. SEM morphology

Figure 6 shows the SEM micrographs of SiO_2 -based nanocomposites. SiO_2 nanoparticles of less than 100 nm can be observed from SEM micrographs of PE/ SiO_2 -1/F, PE/ SiO_2 -1/M and PE/ SiO_2 -1/S (examples were circled in Figs. 6(a)–6(c), respectively). Increasing the SiO_2 content to 5 wt.% resulted in more numbers of fine particles in PE/ SiO_2 -5/F, PE/ SiO_2 -5/M and PE/ SiO_2 -5/S, as circled in Figs. 6(d)–6(f), respectively. While the lamellar structure of the base PE can be observed in all micrographs (arrowed), it is somehow difficult to distinguish the lamellar network of the base PE subjected to fast, moderate and slow crystallizations due to the presence of nanoparticles and image artefacts caused by the fracture surface of the samples, as explained elsewhere.^{37,38}

Meanwhile, the presence of 1 wt.% of Si_3N_4 of less than 100 nm can be observed in Figs. 7(a)–7(c) (examples were circled) for samples prepared under fast, moderate, and slow crystallizations, respectively. Increasing the amount of Si_3N_4 to 5 wt.% resulted in the presence of more numbers of particle as shown in Figs. 7(d)–7(f) (examples were circled), respectively. By analyzing Figs. 6 and 7, changes on the underlying morphology of the base PE under

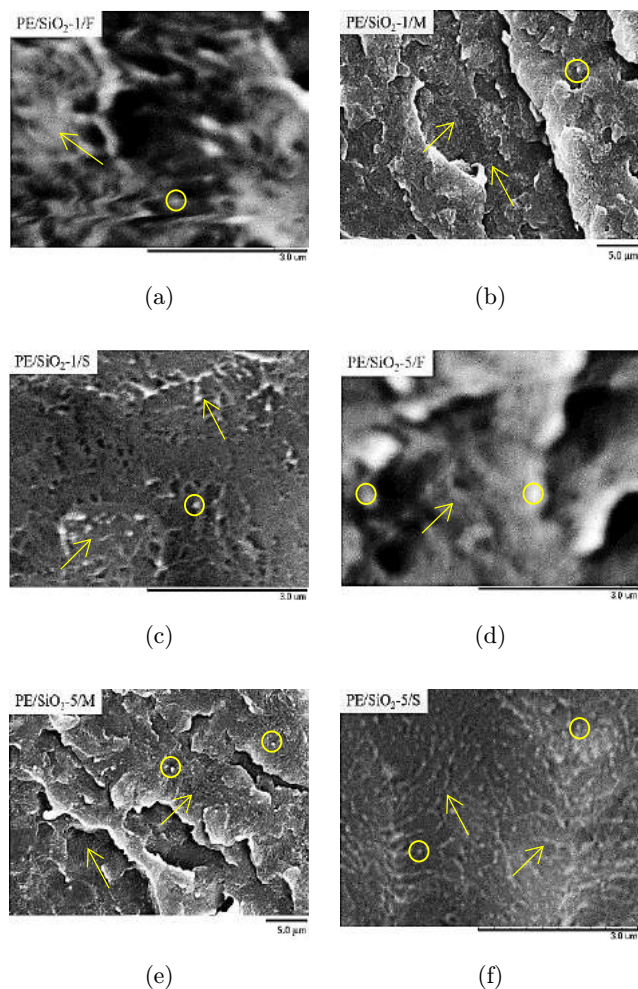


Fig. 6. Morphology of nanocomposites containing 1 wt.% of SiO₂ under (a) fast, (b) moderate, (c) slow crystallizations and nanocomposites containing 5 wt.% of SiO₂ under (d) fast, (e) moderate, (f) slow crystallizations.

fast, moderate and slow crystallizations became better observed. First, fast crystallization of the materials led to featureless lamellar structure of the materials (see the arrowed regions in Figs. 6(a), 6(d), 7(a) and 7(d)). Such a feature is somehow similar to that of a quenched polymer sample, where the texture of a quenched sample is often shown as a featureless region and less revealing under SEM and sometimes even under transmission electron microscopy.^{17,18} Second, moderate crystallization of the materials caused the lamellar arrangement to become granular-like (see the arrowed regions in Figs. 6(b), 6(e), 7(b) and 7(e)). Lastly, slow crystallization of the materials led to coarser, sheaf-like lamellar arrangement (see the arrowed regions in Figs. 6(c), 6(f), 7(c) and 7(f)). The granular-like morphology and sheaf-like

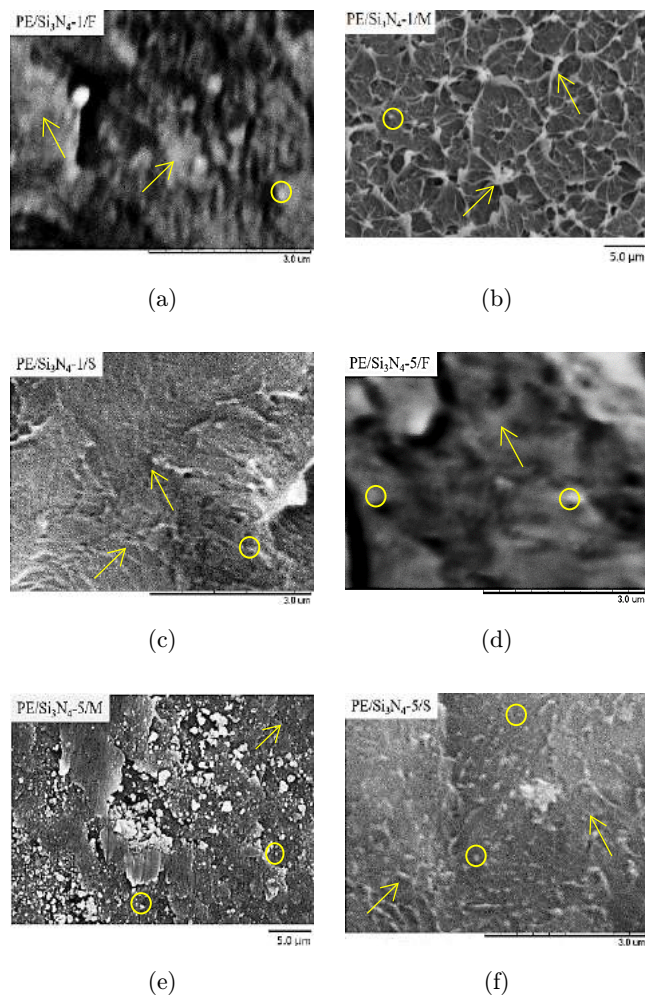


Fig. 7. Morphology of nanocomposites containing 1 wt.% of Si₃N₄ under (a) fast, (b) moderate, (c) slow crystallizations and nanocomposites containing 5 wt.% of Si₃N₄ under (d) fast, (e) moderate, (f) slow crystallizations.

morphology are comparable to the work as reported in the literature.²² It is noteworthy that single lamellar crystals and fine size nanoparticles were not well revealed in this work, where the lamellar textures and the fine particles tend to obscure each other. While the use of the permanganic etching technique³⁹ can be pursued such that the crystalline phase of the PE can be well distinguished from its amorphous phase, previous work^{20,35} suggests that revealing the complete lamellar and nanoparticle size distributions within a polyethylene blend nanocomposite system is challenging.

Of note, agglomeration of nanoparticles could not be completely avoided in this work, and this is illustrated through a representative SEM micrograph of nanocomposites containing 5 wt.% of Si₃N₄ in Fig. 7(e). Similar issue was also found for

SiO₂-based nanocomposites (not shown for brevity). It is well known that nanoparticles commonly appear as agglomerates rather than isolated particles in nanocomposites, and agglomeration effects become more apparent with increasing amounts of nanoparticles.⁴⁰ Of note, visual examination of a number of SEM micrographs of the nanocomposites suggests that the dispersion of an equivalent amount of SiO₂ and Si₃N₄ nanofillers in PE was comparable.

3.5. Electrical breakdown strength

Figure 8(a) shows the AC breakdown strength of SiO₂-based nanocomposites under fast, moderate and slow crystallizations. The highest AC breakdown strength (163 kV mm⁻¹) was achieved with the material moderately crystallized (PE/SiO₂-1/M). Increasing the amount of SiO₂ to 5 wt.% generally reduced the AC breakdown strength of the similar nanocomposite system [see Fig. 8(b)]. Nevertheless, the AC breakdown strength of the materials, when moderately crystallized (PE/SiO₂-5/M), was again the highest (132 kV mm⁻¹) compared to the same materials subjected to fast and slow crystallizations. Under the respective crystallization conditions, the AC breakdown strength of PE/Si₃N₄ nanocomposites was comparable to that of PE/SiO₂ nanocomposites under equivalent nanofiller loading levels. Prior work suggests that different types of nanofillers were less influential under AC fields.⁴¹ Of note, the AC breakdown strength of Si₃N₄-based nanocomposites was, again, the highest under moderate crystallization under 1 wt.% and 5 wt.% of Si₃N₄ loading levels.

Since the influence of crystallization was less pronounced under AC breakdown, this work suggests that morphological changes of the polymer caused by crystallization were of secondary importance for the investigated nanocomposite systems under AC field, as also highlighted elsewhere.^{38,42} While changes in a single component polymer's morphology can have a direct effect on macroscopic properties of the polymer, variations in a polymer blend's morphology are less directly translated into changes in the macroscopic properties of a polymer blend-based nanocomposite system.¹⁰

Under DC field, adding 1 wt.% and 5 wt.% of Si₃N₄ to PE resulted in higher DC breakdown strength compared to adding equivalent amounts of SiO₂ to PE under the respective fast, moderate and slow crystallizations [compare Figs. 9(c) and 9(d)]

with Figs. 9(a) and 9(b), respectively]. The increased DC breakdown strength of Si₃N₄-based nanocomposites can be attributed to reduced surface hydroxyl groups and associated water molecules in the nanocomposites compared to SiO₂-based nanocomposites, as demonstrated through FTIR. Water was therefore having less pronounced effects in Si₃N₄-based nanocomposites than in SiO₂-based nanocomposites. In fact, the current comparison between the DC breakdown strength of Si₃N₄-based nanocomposites and SiO₂-based nanocomposites reinforces one of the authors' previous assertion that water is the main mechanism affecting the DC breakdown performances of these two nanocomposite systems²⁴; similar findings comparing the DC breakdown strength of PE/SiO₂ nanocomposites and PE/Si₃N₄ nanocomposites have also been reported elsewhere.³⁵ This is because the interface within nanocomposites depends largely on the interfacial layer of nanoparticles, and this is closely associated with water molecules governing the surface chemistry of the nanoparticles. Meanwhile, the dispersion state of SiO₂ and Si₃N₄ nanofillers in PE was less influential in DC breakdown since the dispersion state of an equivalent amount of SiO₂ and Si₃N₄ was comparable in this work.

Again, the DC breakdown strength of both the SiO₂-based nanocomposites and Si₃N₄-based nanocomposites, when subjected to moderate crystallization, was the highest compared to fast and slow crystallizations, under 1 wt.% and 5 wt.% of nanofiller loading levels [see Figs. 9(a)–9(d)]. These DC breakdown data suggest that changes in crystallization conditions had a more direct consequence under DC field. To correlate the crystallization, structure and breakdown properties of the materials, the following inferences are made.

SEM morphology of this work suggests granular-like lamellar structure for all moderately crystallized materials. Since water was present in both SiO₂-based nanocomposites and Si₃N₄-based nanocomposites, interfacial water accumulation mechanisms within the materials can therefore be affected by the granular-like arrangement of the lamellar network. As such, mitigation of water-related effects under moderate crystallization was likely, and this in turn resulted in an enhancement of the DC breakdown performance of the materials. Although a sheaf-like lamellar structure has been previously reported to favor breakdown

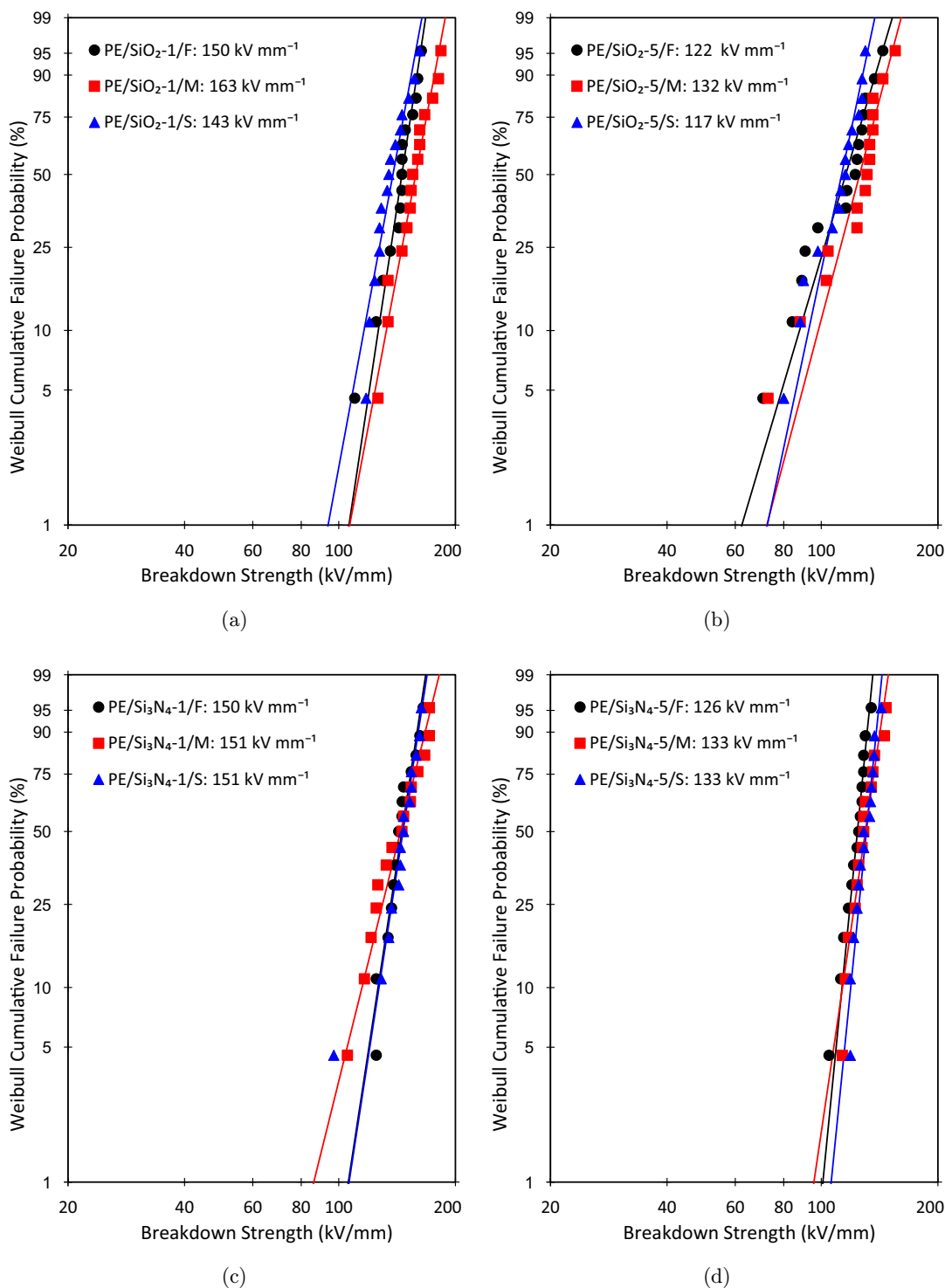


Fig. 8. Weibull plots comparing AC breakdown strength of nanocomposites containing (a) 1 wt.% of SiO₂, (b) 5 wt.% of SiO₂, (c) 1 wt.% of Si₃N₄, (d) 5 wt.% of Si₃N₄, under fast, moderate and slow crystallizations.

improvements in a polyethylene blend,²² the current results suggest that this was not applicable for the investigated material systems. In fact, the literature⁴² suggests that although the breakdown

strength of a material can be enhanced under slower crystallizations, the breakdown strength can otherwise be deteriorated when subjected to extremely slow crystallization, as a consequence of the

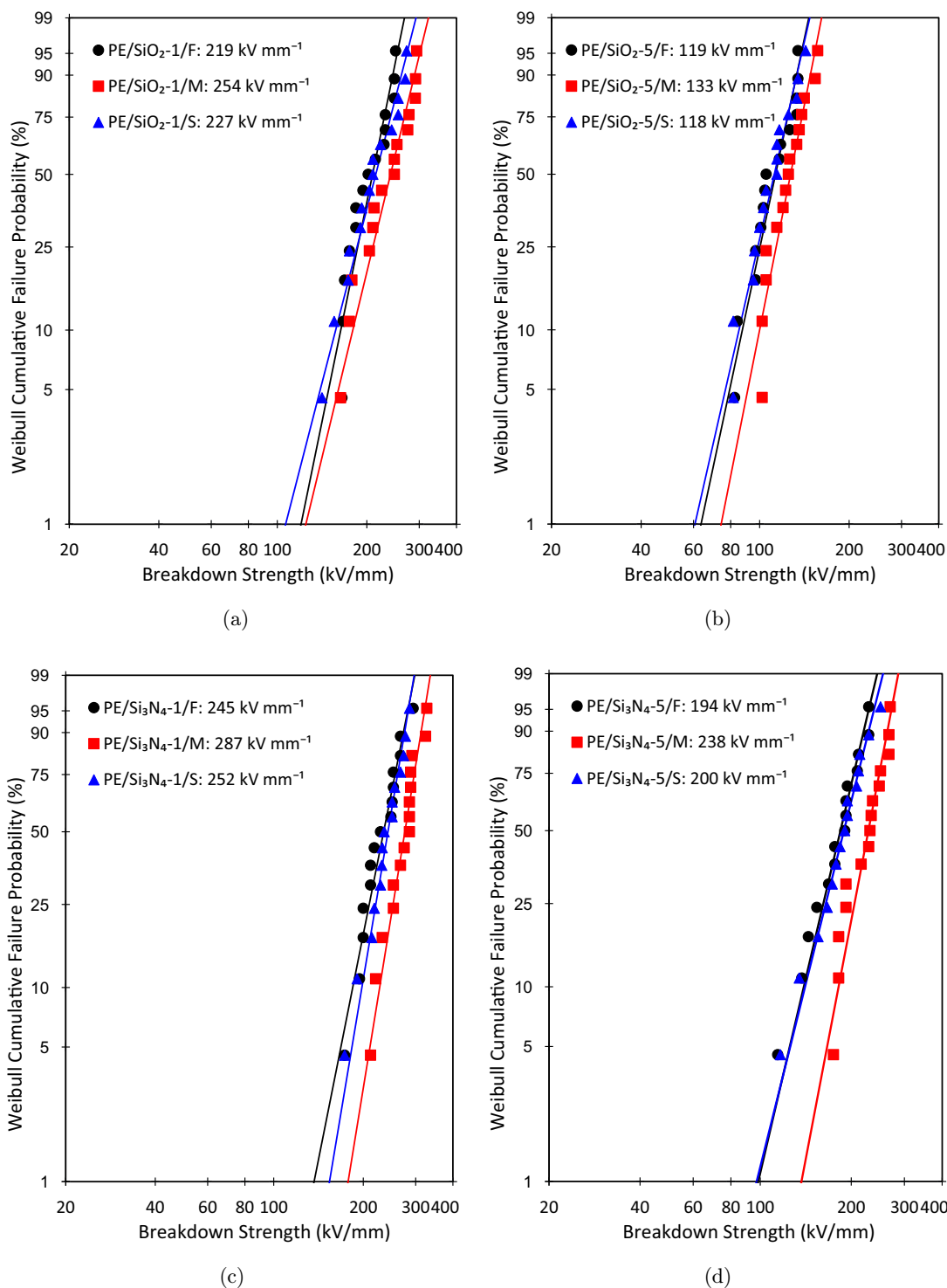


Fig. 9. Weibull plots comparing DC breakdown strength of nanocomposites containing (a) 1 wt.% of SiO_2 , (b) 5 wt.% of SiO_2 , (c) 1 wt.% of Si_3N_4 , (d) 5 wt.% of Si_3N_4 , under fast, moderate and slow crystallizations.

development of a coarser crystal morphology during extremely slow crystallization.⁴³

In addition, analysis of crystallinity shows that changes in the melting traces of the HDPE-rich phase were crucial as far as the DC breakdown strength is

concerned. The crystallinity of the nanocomposites under fast and slow crystallizations was largely indistinguishable, and so was the breakdown strength. However, each moderately crystallized sample possessed the highest crystallinity compared to the

respective sample subjected to fast and slow crystallizations. Since the breakdown strength of all the materials was also the highest under moderate crystallization, this can be attributed to high crystallinity of the materials under moderate crystallization. According to the literature,⁴⁴ higher crystallinity of a material can be caused by the presence of increased crystalline regions with well-ordered molecules of the polymer. The crystalline regions, which in turn determines the crystallinity, can also influence water-related interactions within the material — water molecules commonly aggregate in the amorphous region, but not in the crystalline region⁴⁵ — that will subsequently affect the material's breakdown strength. Therefore, the current results suggest that increased crystalline regions of the moderately crystallized nanocomposites led to well-ordered molecular network (granular-like lamellar structure), whereby the breakdown path became harder to penetrate through the crystalline regions. This resulted in higher breakdown strength of the moderately crystallized nanocomposites.

4. Conclusions

In this work, polyethylene blend nanocomposites containing 1 wt.% and 5 wt.% of SiO₂ and Si₃N₄ nanofillers was successfully formulated under three nonisothermal crystallization processes, namely, fast (80°C min⁻¹), moderate (15°C min⁻¹) and slow (1°C min⁻¹) crystallizations. These different nanocomposites and crystallization conditions had different effects on the breakdown performance of the materials. Specifically, nanocomposites containing Si₃N₄ had higher DC breakdown strength than nanocomposites containing equivalent amounts of SiO₂. Since nanofiller dispersion within both nanocomposite systems was comparable, the enhanced DC breakdown performance of Si₃N₄-based nanocomposites is attributed to changes in the surface chemistry of the silicon-based nanoparticles, where Si₃N₄ has fewer surface hydroxyl groups than SiO₂. Meanwhile, moderately crystallized SiO₂-based nanocomposites and Si₃N₄-based nanocomposites possessed the highest DC breakdown strength than equivalent nanocomposites subjected to fast and slow crystallizations. This is attributed to changes in the underlying molecular conformation of PE leading to granular-like lamellar structure and increased crystallinity of the moderately crystallized materials, whereby water-related effects became

mitigated and that it was more difficult for the breakdown path to penetrate through the well-ordered crystalline region. While engineering surface chemistries of nanofillers, through the removal of surface hydroxyl groups, is critical in enhancing the breakdown performance of nanocomposites, the current work suggests that changes in the underlying molecular conformation of polymers as a consequence of moderate crystallization are also important to improve the breakdown performance of nanocomposites. Significantly, nanocomposites with a higher voltage rating for any given insulation thickness can be achieved through appropriate nonisothermal crystallization processes of the base polymer.

Acknowledgments

The authors acknowledge Malaysia Ministry of Education, Universiti Teknologi Malaysia, and Nippon Sheet Glass Foundation for Materials Science and Engineering for financial sponsorship and FRGS (FRGS/1/2019/TK04/UTM/02/1), RUG (16J55) and NSG (4B373) research grants.

References

1. S. Diahm, *IEEE Trans. Dielectr. Electr. Insul.* **26**, 247 (2019).
2. E. Helal, C. Pottier, E. David, M. Frechette and N. R. Demarquette, *Eur. Polym. J.* **100**, 258 (2018).
3. S. Zhou, J. Wang, G. Wang, Z. Jiang and H. Ren, *Polym. Bull.* **75**, 289 (2018).
4. S. P. P. Sadhu, S. Siddabattuni, S. Muthukumar and K. B. R. Varma, *J. Mater. Sci. Mater. Electron.* **29**, 6174 (2018).
5. J. K. Nelson, J. C. Fothergill, L. A. Dissado and W. Peasgood, Towards an understanding of nanometric dielectrics, in *Annual Report Conf. Electrical Insulation and Dielectric Phenomena*, Cancun, Mexico, 2002, p. 295.
6. S. Okozumi, Y. Murakami, M. Nagao, Y. Sekiguchi, C. C. Reddy and Y. Murata, DC breakdown strength and conduction current of MgO/LDPE composite influenced by filler size, in *Annual Report Conf. Electrical Insulation and Dielectric Phenomena*, Quebec, Canada, 2008, p. 722.
7. M. S. Hamzah, M. Mariatti and M. Kamarol, *Polym. Bull.* **75**, 2529 (2018).
8. F. N. Alhabill, R. Ayoob, T. Andritsch and A. S. Vaughan, *Mater. Des.* **158**, 62 (2018).
9. D. Pitsa and M. G. Danikas, *Nano* **6**, 497 (2011).

10. I. L. Hosier, M. Praeger, A. S. Vaughan and S. G. Swingler, *IEEE Trans. Dielectr. Electr. Insul.* **24**, 3073, (2017).
11. C. Zhang and G. C. Stevens, *IEEE Trans. Dielectr. Electr. Insul.* **15**, 606 (2008)
12. D. Fabiani, G. C. Montanari and L. Testa, *IEEE Trans. Dielectr. Electr. Insul.* **17**, 221 (2010).
13. S. Li, G. Yin, G. Chen, J. Li, S. Bai, L. Zhong, Y. Zhang and Q. Lei, *IEEE Trans. Dielectr. Electr. Insul.* **17**, 1523 (2010).
14. X. Huang, Z. Ma, Y. Wang, P. Jiang, Y. Yin and Z. Li, *J. Appl. Polym. Sci.* **113**, 3577 (2009).
15. X. Huang, P. Jiang, C. Kim, Q. Ke and G. Wang, *Compos. Sci. Technol.* **68**, 2134 (2008).
16. C. D. Green and A. S. Vaughan, *IEEE Electr. Insul. Mag.* **24**, 6 (2008).
17. I. L. Hosier, A. S. Vaughan and S. G. Swingler, *J. Polym. Sci. B Polym. Phys.* **38**, 2309 (2000).
18. I. L. Hosier, A. S. Vaughan and S. G. Swingler, *J. Mater. Sci.* **32**, 4523 (1997).
19. K. Y. Lau, A. S. Vaughan, G. Chen, I. L. Hosier and A. F. Holt, *J. Phys. D Appl. Phys.* **46**, 095303 (2013).
20. K. Y. Lau, A. S. Vaughan, G. Chen, I. L. Hosier, A. F. Holt and K. Y. Ching, *IEEE Trans. Dielectr. Electr. Insul.* **21**, 340 (2014).
21. M. L. D. Lorenzo and C. Silvestre, *Prog. Polym. Sci.* **24**, 917 (1999).
22. C. D. Green, A. S. Vaughan, G. Stevens, S. J. Sutton, T. Geussens and M. Fairhurst, *IEEE Trans. Dielectr. Electr. Insul.* **20**, 1 (2013).
23. I. L. Hosier, A. S. Vaughan, A. Pye and G. C. Stevens, *IEEE Trans. Dielectr. Electr. Insul.* **26**, 1197 (2019).
24. K. Y. Lau, S. N. R. M. Zafrullah, I. Z. Ismail and K. Y. Ching, *J. Electrostat.* **96**, 119 (2018).
25. L. Mandelkern, *Comprehensive Polymer Science: Polymer Properties*, Oxford: Pergamon Press, 1992, p. 363.
26. L. Wei, L. Tang and B. Huang, *J. Polym. Sci. A Polym. Chem.* **42**, 941 (2004).
27. D. Panaitescu, S. Moradian, A. Rashidi and M. Yazdanshenas, *J. Appl. Polym. Sci.* **122**, 1921 (2011).
28. L. Dissado and J. Fothergill, *Electrical Degradation and Breakdown in Polymers* (1992).
29. D. Fournier and L. Lamarre, Effect of pressure and temperature on interfacial breakdown between two dielectric surfaces, *Annual Report Conf. Electrical Insulation and Dielectric Phenomena*, Victoria, Canada, 1992, p. 229.
30. A. S. Vaughan and I. L. Hosier, *J. Mater. Sci.* **43**, 2922 (2008).
31. C. D. Green, A. S. Vaughan, G. R. Mitchell and T. Liu, *IEEE Trans. Dielectr. Electr. Insul.* **15**, 134 (2008).
32. C. S. Wu and H. T. Liao, *J. Polym. Sci. B Polym. Phys.* **41**, 351 (2003).
33. Y. Li, L. Wang, S. Yin, F. Yang and P. Wu, *J. Am. Ceram. Soc.* **94**, 4169 (2011).
34. G. Cheng, J. Qian, Z. Tang, G. Ding and J. Zhu, *Ceram. Int.* **41**, 1879 (2015).
35. I. L. Hosier, M. Praeger, A. S. Vaughan and S. G. Swingler, *IEEE Trans. Nanotechnol.* **16**, 169 (2017).
36. J. V. Gulmine, P. R. Janissek, H. M. Heise and L. Akcelrud, *Polym. Test.* **21**, 557 (2002).
37. A. Samad, K. Y. Lau, I. A. Khan, A. H. Khoja, M. M. Jaffar and M. Tahir, *J. Phys. Chem. Solids* **120**, 140 (2018).
38. N. H. Rahim, K. Y. Lau, N. A. Muhamad, N. Mohamad, W. A. W. A. Rahman and A. S. Vaughan, *IEEE Trans. Dielectr. Electr. Insul.* **26**, 284 (2019).
39. R. H. Olley and D. C. Bassett, *Polymer* **23**, 1707 (1982).
40. E. Kontou and M. Niaounakis, *Polymer* **47**, 1267 (2006).
41. K. Y. Lau, Structure and electrical properties of silica-based polyethylene nanocomposites, Ph.D. Thesis University of Southampton (2013).
42. N. H. Rahim, K. Y. Lau, N. A. Muhamad, N. Mohamad, C. W. Tan and A. S. Vaughan, *IEEE Trans. Dielectr. Electr. Insul.* **26**, 1541 (2019).
43. C. D. Green, A. S. Vaughan, G. Stevens, A. Pye, S. J. Sutton, T. Geussens and M. Fairhurst, *IEEE Trans. Dielectr. Electr. Insul.* **22**, 639 (2015).
44. G. Chen, Simulation of dielectric breakdown in semicrystalline polymeric insulation, in *IEEE Int. Conf. High Voltage Engineering and Application*, Chengdu, China, 2016, p. 1.
45. A. Rozanski and A. Galeski, *Macromolecules* **44**, 7273 (2011).