

Protest Matters: The Effects of Protests on Economic Redistribution*

Belinda Archibong[†]
Barnard College

Tom Moerenhout
Columbia University

Evans Osabuohien
Covenant University

February 7, 2022

Abstract

Can citizen-led protests lead to meaningful economic redistribution and nudge governments to increase redistributive efforts of fiscal resources? We study the effects of protests on fiscal redistribution using evidence from Nigeria. We digitized twenty-six years of public finance data from 1988 to 2016 to examine the effects of protests on intergovernmental transfers. We find that protests increase transfers to protesting regions, but only in areas that are politically aligned with disbursing governments. Protesters also face increased police violence. Non-protest conflicts do not affect transfers and protests do not affect non-transfer revenue. The results show that protests can influence fiscal redistribution.

JEL classification: D7, H2, H4, H5, H7, O10, O43, N37

Keywords: Tax, Transfers, Fiscal, Revenue-Sharing, Economic, Protest

*Thanks to the Gates Foundation and the International Centre for Tax and Development (ICTD) for funding this research. Thanks to Ebonya Washington, Akpan Ekpo, Ngozi Okonjo-Iweala, James Fenske, Isaiah Andrews, Steve Nafziger, Agatha Archibong, Leonard Wantchekon, Jim Poterba, Gary Hoover, Sandy Darity, Francis Annan, Bill Spriggs, 2 anonymous referees at ICTD and participants at the Nigerian Tax Research Network and CSEA workshops, and the AEHN, EHDR, CSAE and DITE conferences for useful comments and suggestions. All errors are our own.

[†]Corresponding author. Barnard College, Columbia University. 3009 Broadway, New York, NY 10027, USA. ba2207@columbia.edu.

1 Introduction

“We turn out in the streets and nothing seems to happen. Maybe we’re doing it wrong”

- Nathan Heller, *The New Yorker*, August 14, 2017

In May, 2020, an African-American man named George Floyd was killed after a white police officer knelt on his neck for multiple minutes during a routine arrest¹. The brutality of the event and others like it directed towards Black citizens, reignited a series of protests against racism and police brutality and for distributive justice under the Black Lives Matter (BLM) movement. Over 15 million people are estimated to have participated in the BLM protests in 2020 alone, and the protests and others like it over the past decade resulted in the 2010s period being labeled the ‘the decade of protest’². Many of the stated aims of these protests have highlighted distributive justice claims, through for example, reparations to descendants of African slaves in the BLM movement, and redistribution of economic capital in the 2011 Occupy Wall Street protests³. But can protests lead to meaningful changes in government policy, particularly around the redistribution of economic resources? This is a difficult empirical question to answer partly due to both the complexity of fiscal systems around the world, and the paucity of data on subnational public financing.

We circumvent these empirical difficulties, and address this question using evidence from Nigeria. Nigeria’s highly centralized fiscal system makes it an informative region to study how governments might directly deploy fiscal resources as a response to citizen-led protests. While most countries around the world operate some type of revenue sharing

¹Source: <https://www.nytimes.com/2020/05/31/us/george-floyd-investigation.html>

²Source: <https://www.nytimes.com/interactive/2020/07/03/us/george-floyd-protests-crowd-size.html>; <https://www.npr.org/sections/pictureshow/2019/12/31/790256816/the-2010s-a-decade-of-protests-around-the-world>. Figure A2 shows a snapshot of news headlines around the world.

³Source: <https://www.reuters.com/article/us-usa-politics-race/slavery-reparations-sought-in-first-black-lives-matter-agenda-idUSKCN10C3E1>

scheme where, for example, a federal government entity disburses conditional or unconditional grants to subnational entities, Nigeria is one of more than 30 countries with revenue sharing schemes based on revenues from natural resources⁴. This allows us to more carefully study the effects of protests on the distribution of revenues from a plausibly exogenous source (oil in the Nigerian case) under a heavily consolidated- top-down revenue sharing system where the central government can choose to respond to ostensibly economic grievance driven protests by directly disbursing fiscal resources to assuage contentious regions and quell protests. We construct a new dataset from 26 years of archival records on public finance from 1988 to 2016, assembling data on revenues and expenditures, along with geocoded information on protests to test our hypotheses in Nigeria. The breadth of data over these years and the richness of Nigeria’s political history also allow us to test hypotheses from the electoral politics literature on differential responses of central governments to protests under autocratic versus democratic regimes⁵ (Ellman and Wantchekon, 2000; Hollyer, Rosendorff, and Vreeland, 2015).

The aim of this paper is to investigate the effects of protests on fiscal redistribution and examine how governments respond to protests when they can directly control the distribution of fiscal resources. We do this in four steps. First, to fix ideas about the links between protests and intergovernmental transfers, we outline a simple principal-agent conceptual framework in which the principal is the federal government leader with full control of disbursement over centrally collected revenues and the agent is a state government leader dependent on the principal for revenue transfers. The objective of the principal is to quell protests that may be destabilizing to their tenure in office. This requires some level of cooperation or effort from state government leaders to quell protests. Assume agents cannot be perfectly monitored and the principal must motivate them by sharing some portion of revenues with

⁴As shown in Figure A1 in the Appendix (Oates, 1999).

⁵Nigeria has a military government for most of the period from 1970 to 1999, and a democratic government post 1999.

them. Then, given simple assumptions around the cost of agent effort, one prediction of the framework is that the principal may transfer more or less revenues to agents in protesting regions depending on the perceived cost of agent effort in quelling protests. When the agent's optimal effort is non-negative, as may be the case with agents that share political preferences or are politically aligned with the principal and hence have an incentive to keep the principal in office, the principal may transfer a greater share of revenues to the agent. When the perceived agent effort is negative, as may be the case for non-aligned agents, the principal reduces transfers to the agent.

In step two, we test the predictions from the framework and examine the associations between protests and transfers. We define protests as protest intensity in a particular district or state and measure it in two ways. The first measure is our main measure and is the state-level deviation of the numbers of protest events in each state from the national average numbers of protest events in each year or the state-level z-scores relative to the national mean within a particular year. The specification captures the relative intensity of protests within a state, and the sensitivity of federal government responses to marginal deviations in a state's level of protests from the national average. The second measure defines protest intensity at the state level as strictly positive deviations from the national mean, or as an indicator that equals one if the state's protest z-score is greater than zero. This measure provides an extensive margin estimate that captures the federal government response to relatively high versus low levels of protests within states. We show that higher levels of protests in a state are associated with both increases and decreases in revenue transfers from federal governments to protesting states over the military and democratic periods. Over the military period, protests increase one transfer outcome, called VAT transfers, by between 5.2% and 11.5%, and increase a separate transfer outcome, called allocation transfers, by 6.8%. Over the democratic period, protests decrease allocation transfers by between 0.5% and 0.7%.

We explore political alignment, or whether the federal government leader or president and the state government leader or governor come from the same political party, as a channel that may explain the heterogeneity in the effects of protests on transfers following our conceptual framework. While there is no variation in alignment in the military period, due to all military state governors being direct political appointees and hence, by our definition, politically aligned with the president, we can examine results by alignment in the democratic period with the introduction of electoral politics. We find that protests increase VAT transfers in aligned areas by between 4% and 6.6%, but decrease VAT transfers by around 1% in non-aligned areas. The results on decreased allocation transfers in protesting states are almost entirely driven by protests in non-aligned states. We conduct a number of falsification tests on our results and show that there is no significant association between other conflict events and transfers. We also show that there is no association between protests and non-transfer revenue like internally generated revenue (IGR).

In the third step, after presenting the correlations between protests and intergovernmental transfers, we address concerns of reverse causality and omitted variable bias using an instrumental variables (IV) strategy. Guided by the growing social science literature on the causes of protests that has highlighted the costs of coordination and the role of economic downturns as being important joint drivers of protests (Enikolopov, Makarin, and Petrova, 2020; Manacorda and Tesei, 2020; Battaglini, 2017; Madestam et al., 2013), we construct an instrument for our protest measure that is based on two parts. The instrument is the interaction of (1) the level of ethnolinguistic similarity in a state and (2) the share of states experiencing a negative economic shock within the year. We explain the logic of the instrument in further detail in the text and note here that the first component of the instrument addresses the cost of coordination for protest by capturing the fact that language may be a significant barrier to collective action for protest, inasmuch as it represents a barrier to easy communication. Regions with more people from ethnicities that speak the same language

may have an easier time communicating to organize for protests. The second component of the instrument addresses the role of economic downturns in spurring protests by using the share of states that have experienced a drought or flood, which would be a significant source of economic hardship for people in a region where a major portion of the local population works in agriculture, and the vast majority of agriculture is rain fed.

With the IV specification, we find similar results to the OLS estimates, that protests affect fiscal redistribution, decreasing allocation transfers and slightly increasing VAT transfers in line with the OLS results. Given concerns that the instrument may directly affect intergovernmental transfers or that it may affect transfers through a channel other than protests, we also present a number of falsification tests for the instrument. We show that the instrument more strongly predict protests in states that have achieved some threshold level of mobile phone penetration, where same language speaking residents can benefit from communication network externalities to more easily organize protests during economic downturns. We also show that our interacted ethnolinguistic similarity instrument positively predicts protests but not intergroup armed conflict like battles, following previous evidence that people from similar groups are more likely to cooperate and less likely to fight with each other (Montalvo and Reynal-Querol, 2005).

Finally, in step four, given that responses to protests by governments are not only fiscal and can include increased violence against protesters, we examine the effects of protests on policing. We find suggestive evidence that protests increase policing and police violence against protesters, particularly in states that are not politically aligned with disbursing federal governments. In contrast, protests are associated with decreased police violence against protesters in aligned states. We also examine the association between protests and state expenditure and document significant negative associations between protests and recurrent expenditure, providing suggestive evidence for the grievance based claims of, in particular,

public sector workers around non-payment of salaries in protesting states. The results provide strong evidence that protests can influence fiscal redistribution. The ways in which they do this depends on the political relationships within governments and between disbursing federal governments and protesting regions. Governments can also respond to protests with increased state violence against protesters.

We add to two distinct literatures. First, we add to the literature on the political economy of protest (Cantoni et al., 2019; El-Mallakh, 2020; Madestam et al., 2013; Acemoglu, Hassan, and Tahoun, 2018; Mazumder, 2018). Previous work has highlighted the role of social media in lowering collective action costs and mobilizing protests (Enikolopov, Makarin, and Petrova, 2020; Manacorda and Tesei, 2020; Battaglini, 2017) and examined the effects of protests on voting behavior and electoral competition (Madestam et al., 2013; El-Mallakh, 2020; Ellman and Wantchekon, 2000), stock market valuations (Acemoglu, Hassan, and Tahoun, 2018), women’s labor market outcomes (El-Mallakh, Maurel, and Speciale, 2018), and political attitudes (Mazumder, 2018), but there is almost no research on the effects of protests on economic redistribution. Most of the work on the effects of protests on economic outcomes more generally, have focused on the economic costs of protests, with evidence showing that protests decrease stock market valuations of politically connected firms (Acemoglu, Hassan, and Tahoun, 2018) and decrease property values (Collins and Margo, 2007). Given that a major stated driver of citizen participation in protests are demands for economic redistribution, whether these protests can nudge governments to engage in more fiscal redistribution is an important, but as yet largely unaddressed part of the literature. Our study is the first, to our knowledge, to provide quantitative estimates of the effects of citizen-led protests on fiscal redistribution by governments.

We also contribute to the economics literature on fiscal federalism and fiscal decentralization and a related literature on regional favoritism in the distribution of fiscal resources

(Oates, 1999, 1993; Musgrave, 1997; Poterba, 1994; Buchanan, 1950; Zhuravskaya, 2000; Boadway and Shah, 2007; Hodler and Raschky, 2014). While this work has mostly focused on explaining the incentive structure of revenue sharing schemes under democratic regimes separately from authoritarian contexts, we show that the incentive constraints of government entities in revenue sharing environments can remain stable under both democratic and non-electoral regimes. The social science literature on regional favoritism has highlighted the role of politician origin in economic outcomes, (Hodler and Raschky, 2014; Fiva and Halse, 2016), the role of political party alignment in economic outcomes (Cullen, Turner, and Washington, 2019), and the distortions in incentives of political stakeholders that can arise as a result of regional and party favoritism (Zantman, 2002; Zhuravskaya, 2000; Casey, 2015). We add to this literature and show that political alignment matters for the disbursement behavior of central governments in response to protests. We also provide suggestive evidence that alignment can affect governments' use of violence in response to protests.

The paper is organized as follows: Section 2 provides historical background on intergovernmental transfers and protests in Nigeria. Section 3 outlines a simple conceptual framework. Section 4 describes the data on public finance and protests. Section 5 reports quantitative estimates of the effects of protests on intergovernmental transfers. Section 6 examines policing and state expenditure outcomes. Section 7 concludes.

2 Fiscal Redistribution and Protests in Nigeria

2.1 Intergovernmental Transfers Under Military and Democratic Rule

Nigeria is a federation comprised of a democratically elected federal government and 37 administrative 'states', consisting of 36 official states, as designated by the 1999 constitution, and a Federal Capital Territory (FCT) at Abuja (Archibong, 2019). The states can be further subdivided into 774 local government areas (LGAs), the smallest administrative unit in the

country, and 6 geopolitical zones, with geographies correlating strongly with ethnicity in Nigeria as shown in Figure A3 in Appendix A.1⁶. Following Nigeria's discovery of oil in 1956, independence from British colony status in 1960 and a civil war from 1967 to 1970, partly over control over oil resources, the country has operated under fiscal federalism, where the distribution of government revenue, 80% of which comes from oil receipts, are distributed centrally from the federal government to subnational entities- states and LGAs (Archibong, 2019; Maystadt and Salihu, 2019).

The country experienced almost three decades of military rule from 1970 to 1999⁷, followed by democratic governance after 1999. Under both regimes, revenue disbursement was and continues to be extremely centralized. Apart from a constitutional requirement that 13% of gross oil revenue be shared among oil producing states in proportion to their production volumes, all revenues are remitted to the federal government (Maystadt and Salihu, 2019). The remaining revenue is paid into a Federation Account. Included in the Federation Account are revenues from oil, corporate income taxes, custom and excise duties and, notably, VAT revenue from state governments under Nigeria's highly centralized fiscal system (Alm and Boex, 2008). Given the significant share of revenues from oil in the Account, the gross amount in the Account fluctuates closely with plausibly exogenous changes in the export price of oil (Maystadt and Salihu, 2019). Revenues are then shared by the federal government among the three levels of government according to a vertical and horizontal formula.

The vertical formula has changed over the years, ranging from 48.5% to 55% for the federal government, 24% to 30.5% for states and 10% to 20.6% for LGAs between 1981 and

⁶Of the 6 political zones, encompassing the states and LGAs, broadly, the North-West is dominated by the Hausa and Fulani ethnic groups, the North-East is largely populated by the Kanuri ethnic group, the South-West is dominated by the Yoruba ethnic group, and the South-East is dominated by the Igbo ethnic group. The Ijaw/Edo/Bini/Ibibio weakly dominate the SouthSouth zone while the North-Central is home to the Tiv, Nupe and other smaller ethnic populations (Archibong, 2019).

⁷There were brief periods of civilian rule between 1979 and 1983, and for a few months in 1993.

2016 (Okauru, 2012; Onuigbo and Innocent, 2015). There is also a horizontal allocation formula that determines how much of this disbursed revenue should go to each state and local government. The horizontal allocation formula has also fluctuated over the years and weighted five main factors between 1981 and 2016 as follows: (1) equality of states, where each state should get an equal share (40% to 50%); (2) population (30% to 50%); (3) internal revenue generation efforts of each state (0% to 10%); (4) landmass and terrain (0% and 10%) and (5) social development factors like school enrollment, health and water (0% and 15%). Transfers to states consist of transfers from the Federation Account known as Allocations and VAT transfers remitted back to states. The VAT transfers partly follow the general horizontal allocation formula, with around 50% of transfers to states shared equally, 30% in proportion to population and 20% based on the individual state's relative contribution to VAT revenues (Maystadt and Salihu, 2019).

State and local governments, including oil producing states, have no control over the rate of federal allocations. The only tax revenue they directly raise and control are internally generated revenues (IGR) largely from personal income taxes and business registration and land leasing fees (Ekpo, 1994; Maystadt and Salihu, 2019; Salami, 2011). States are heavily dependent on federal transfers for revenue; between 1988 and 2016, 65% of state revenues came from Allocations or allocation transfers, 15% of state revenues came from VAT transfers, with total transfers from the federal government comprising 80% of state revenues on average. In contrast, IGR has remained relatively small at only 20% of state revenues, on average, over the military and democratic periods⁸.

The determination of the formulas and their distribution are very opaque processes in Nigeria. Since the 1980s, the Account has been administered by a federally appointed committee, currently known as the Federation Account Allocation Committee (FAAC), which

⁸Source: Author calculations from archival data. Details provided in Section 4.

meets monthly to allocate the previous month’s revenue among the three levels of government⁹ (Maystadt and Salihu, 2019). Despite the ostensibly rule based nature of revenue sharing, there is virtually no information released by the federal government on the data components used in the formula.

At the state level, while data on allocation transfers, making up over 60% of state revenues, are regularly publicized in media and federal documents¹⁰, data on VAT transfers to states are much less transparent, with very little information shared by the federal government on the components and determinants of VAT transfers. Figure 1 shows Google Trends search rankings for ‘allocation’ versus ‘VAT’ terms in Nigeria between 2011 and 2021¹¹ and provides suggestive evidence of the relatively more well publicized nature of allocation versus VAT transfers in Nigeria. The top 5 most related search query terms for allocation and VAT in Nigeria in Table A1 in Appendix A.1 also provide further suggestive qualitative evidence that Nigerian residents have a higher level of knowledge/information about allocation transfers than VAT transfers; residents are more likely to search questions about the distribution of allocation transfers and the definition of VAT. The lack of transparency, combined with relatively weak institutions around monitoring leakages in Nigeria has made the Federation Account transfers a source of contention, and susceptible to political manipulation, despite the formula based nature of revenue sharing in the country (Maystadt and Salihu, 2019; Ekpo, 1994; Salami, 2011); echoing issues identified with formula based fiscal schemes in other countries in the region (Banful, 2011). It also allows us to examine how federal governments may use the transfer system to respond to protests within the country, despite the

⁹The committee consists of the Federal Minister of Finance, state representatives and representatives from the Central Bank and Federal Inland Revenue Service, among others. See Maystadt and Salihu (2019) for details.

¹⁰For example, as highlighted in this BBC news article written in one of the local languages, Nigerian pidgin: <https://www.bbc.com/pidgin/media-53470429>

¹¹The figure looks similar if we examine trends from the earliest available date in 2004, though after 2010, Google reports that there was a reassessment of the data for geographic location accuracy so we report trends after the reassessment in 2010.

formula.

2.2 Protests and Government Responses

2.2.1 Military Rule

Many protests have been highlighted throughout Nigeria’s history of military rule. To illustrate the different ways in which governments responded to protests, we highlight one here: the so-called ‘economic riots’ of the Structural Adjustment Program (SAP) era of the 1980s and 1990s (Shettima, 1993). Over the debt crisis of the 1980s, Nigeria was one of a group of African countries that qualified for loans from international financial institutions like the International Monetary Fund (IMF) and the World Bank. The loans were under strict conditions that stipulated that countries needed to implement more free-market based policies to qualify for debt relief under so-called Structural Adjustment Programs (SAP) (Archibong, Coulibaly, and Okonjo-Iweala, 2021). Some of the SAP policies, like the removal of agricultural subsidies that kept food prices low, led to increases in food prices that were blamed for the stagnation of economic growth and increases in youth unemployment and poverty over this period (Archibong, Coulibaly, and Okonjo-Iweala, 2021; Sender, 1999).

The poor economic conditions sparked a number of university student and labor union led protests over the 1980s and 1990s, and were labelled “economic riots” in international news reporting¹² (Sneyd, Legwegoh, and Fraser, 2013; Shettima, 1993). Poor economic conditions coupled with periodic non-payment of salaries of public sector workers were often highlighted as grievances against government as unions organized these workers to protest non-payment of salaries and for an improvement in work conditions (Shettima, 1993). The responses from the military government were a combination of concession/appeasement, in the form of transfers, like salary payments to workers, and repression- beating, arrests and

¹²A headline from the New York Times from this period is shown in Figure A5.

killing of protest participants (Shettima, 1993).

2.2.2 Democratic Period

As in the military period, the drivers of protest over the democratic period in Nigeria have been varied, with the common theme being protests around economic conditions led by labor unions and protests around economic and political conditions led by opposition party leaders in the country (Sneyd, Legwegoh, and Fraser, 2013; Bellemare, 2015; Omotola, 2009). As in the military period, poor economic conditions coupled with periodic non-payment of salaries of public sector workers are often highlighted as reasons for protests, with unions organizing workers from teachers to healthcare workers to protest against government non-payment of salaries and for an improvement in working conditions¹³ (Adeloye et al., 2017).

Three notable protests in the past few decades include the 2007 electoral protests, the 2012 Occupy Nigeria fuel subsidy protests and the 2020 End SARS protests. The 2007 electoral protests followed the election of then president Umaru Yar'Adua and perceptions that the voting was rigged, and that the incumbent party, the People's Democratic Party (PDP) that had been in power for all of the democratic period at the time, had not done enough to improve economic conditions in the country (Omotola, 2009). The 2012 Occupy Nigeria protests followed the removal of long standing fuel subsidies which led to an overnight spike in gasoline prices in the country (Akanle, Adebayo, and Adetayo, 2014). The most recent protest- the 2020 End SARS protests was partly inspired by the BLM anti-police brutality protests¹⁴. The protests centered around calling for an end to police brutality spearheaded by one police unit in particular, the Special Anti-Robbery Squad (SARS), against local populations. The responses to these protests from the Nigerian government have been, as they were under military rule, a mixture of concession/appeasement, generally in the

¹³An example from recent newspaper headlines highlighting protests of government workers over non-payment of salaries is shown in Figure A6 in Appendix A.2.

¹⁴Source: <https://www.bbc.com/news/world-africa-54662986>

form of economic transfers to groups or retractions of policies, and repression through state-sponsored violence and security clampdowns¹⁵ (Bratton and Van de Walle, 1992; Branch and Mampilly, 2015).

3 Conceptual Framework

As illustrated in the historical accounts in Section 2.2, the response to protests by federal governments is generally two-fold: a combination of concession/appeasement and repression focused tactics with the aim of quelling protests that may threaten the federal government leader's tenure in office. To fix ideas about the links between protests and intergovernmental transfers, we outline a simple conceptual framework as follows. In a principal-agent framework, there are two actors operating under a revenue sharing fiscal system: the principal is the federal government leader, f , with full control of disbursement over centrally collected revenues R and the agent is a state government leader dependent on f for revenue transfers. The objective of f is to maximize tenure in office either through minimizing the risk of coups under military governments or maximizing the probability of re-election under democratic regimes. This requires some level of cooperation or effort from state government leaders to quell protests that can jeopardize f 's tenure in office. Assume agents cannot be perfectly monitored and the principal must motivate them by sharing θR with them. We consider a subset of cases where the total level of R within the country is exogenously determined, as in the case where federal government revenues come from natural resources like oil, with the value of R dependent on external natural resource price shocks.

Suppose there are n agents, and e_i refers to agent i 's effort, with $i = 1, \dots, n$, and $e_i \in (-\infty, +\infty)$. The agent i can choose to exert $e_i \geq 0$ and assist f in quelling protests ($e_i > 0$) or choose to do the opposite and work against f 's objectives by supporting or inciting

¹⁵Incidentally, the similarity of response from federal governments under democratic rule may not be surprising given that 30% of democratic presidents were also military heads of states in Nigeria.

further protest ($e_i < 0$). The cost of effort to agent i is $c(e_i)$ which we assume to be increasing and convex with $c(0) = 0$.

Under a revenue sharing scheme, agent i 's transferred revenue is composed of a share θ_i of the federally collected natural resource revenues. θ_i is defined such that for $(\theta_1, \theta_2, \dots, \theta_n)$, $\theta_i \geq 0$ for all i and $\sum_i \theta_i \leq 1$.

The principal's objective function when the agent exerts effort e is:

$$\max_{\theta_i} (1 - \theta_i) R(p, \delta) e_i \tag{1}$$

where $R(\cdot)$ is a strictly increasing function of exogenous natural resource prices p and δ is a stochastic component of natural resource revenues¹⁶. The corresponding agent i 's function is:

$$\max_{e_i} (\theta_i) R(p, \delta) e_i - c(e_i) \tag{2}$$

and agent i chooses effort, e_i^* , so that

$$\frac{d}{de_i} (\theta_i R(p, \delta) e_i - c(e_i)) = 0; \tag{3}$$

and

$$\theta_i = \frac{c'(e_i^*)}{R(p, \delta)} \tag{4}$$

$R(p, \delta)$ is some constant term that we can assume, WLOG, equals one.

Prediction 1: *A mechanical implication of Equation 4 is that an increase in the marginal*

¹⁶Assuming the principal's country is a price-taker, δ can include factors like political instability, causing price shocks in natural resource markets.

cost of the agent's effort in complying with the principal's objectives, all else equal, will be associated with an increase in the share of revenues transferred to the agent.

Prediction 1a: *A follow up to Prediction 1 is that the principal may transfer a greater share of revenues to agent i when $e_i^* \geq 0$, but will reduce transfers to i when $e_i^* < 0$.*

We argue here that under a system of heterogeneous political preferences of principals and agents, reflected by, for example, political party systems, agents that share the same political preferences as the principal, i.e. who are from the same political party as the principal or politically aligned with the principal, have an incentive to keep the principal in office and will exert non-negative effort to do so; one way they might do this is by facilitating transfers to satisfy the unpaid salary demands of protesting public sector workers as highlighted in Section 2.2. In contrast, agents who are not from the same political party and hence have incentives to remove the principal from office may exert $e_i^* < 0$, by, for example, funding media campaigns to criticize the principal for poor economic conditions and unpaid public sector salaries or funding fellow opposition party members involved in protests to further fuel protests and signal dissatisfaction with the principal's party as highlighted in the electoral protests case described in Section 2.2. Accordingly, Prediction 1a will hold for these agents. Important to note here is that since the principal imperfectly monitors agent effort, Prediction 1a still holds if the principal only assumes or perceives negative agent effort.

Additionally, areas with higher levels of protests may have greater numbers of people with enough social capital to mobilize communities for protest, which makes it more politically costly for agents to quell protests in these regions (Bratton and Van de Walle, 1992). Accordingly, agents in these regions may need to exert more effort to quell protests, in line with the principal's objectives, and may need more resources to do so, so Prediction 1 will hold and transfers will increase in the marginal cost of agent effort. Key here is that f will

respond to protests with transfers of θ_i , based on the marginal cost of agent effort, but not to other events, like armed conflicts, battles or civil wars in states. This is because citizen-led protests against governments directly reveal citizens' relatively higher levels of social capital, reflected in their ability to mobilize against the government through protests that can threaten the principal's objective of maximizing tenure in office. Areas with higher levels of social capital, among less fractionalized populations where the costs of coordinating protests are lower, may experience high levels of protests that clearly signal this social capital to regimes, especially during economic downturns (Enikolopov, Makarin, and Petrova, 2020; González, 2020). In contrast, other citizen to citizen conflict events like battles between citizens or civil war, instead signal low levels of social capital and polarized populations that do not threaten f 's objective (Montalvo and Reynal-Querol, 2005).

In the Nigerian context, the principal is the federal government leader or president and the agent is the state government leader or governor. Under military rule, all agents or state governors are politically aligned since state governors were military president appointees. In contrast, under democratic regimes, political alignment is signaled by party alignment between state government leaders and the federal government head, following results from the electoral politics literature (Ellman and Wantchekon, 2000; Cox and McCubbins, 1986).

4 Description of Data

4.1 Public Finance

To assess the effects of protests on fiscal transfers from the federal government, we digitized twenty-six years of archival data on state revenues and expenditures from the Nigerian Annual Abstract of Statistics (AAS) and Ministry of Finance FAAC Reports between 1988 and 2016. The AAS are statistical reports submitted on an annual basis and contain data on allocation and VAT transfers, IGR and recurrent and capital expenditures at the state

level from 1988 to 1996¹⁷. An example of the archival data from the AAS reports is shown in Figure 2. The FAAC reports report monthly and total yearly transfers and allocations to states from 2000-2016, and we use the data at the yearly level for comparison with the pre-2000 military period¹⁸. These data sources and the variables we use in our analysis are described in detail in the data appendix in Appendix A.1.1.

Figure 3 and Figure 4 show maps of Nigeria with its states outlined, and the shares of VAT and allocation transfers and IGR in total state revenues over the military period for available data from 1988 to 1996 and the democratic period from 2000 to 2016. The spatial distribution of state revenues has remained relatively stable between the military and democratic periods, reflected in the significant positive correlations between state revenues in the military and democratic periods. The correlation between state revenues in both periods is largest for IGR at 0.66 ($p < 0.001$), followed by VAT transfers (0.61, $p < 0.001$) and allocation transfers (0.51, $p < 0.01$). In contrast, the trends in capital and recurrent expenditures at the state levels between the military and democratic periods are significantly weaker; the correlation in capital expenditures between both periods is positive and weakly significant at 0.33 ($p < 0.1$) and positive but statistically insignificant for recurrent expenditure (0.27, $p = 0.13$). As documented in previous work and discussed in Section 2, increases in plausibly exogenous oil prices are strongly positively associated with average allocation (0.7, $p < 0.001$) and VAT (0.61, $p < 0.01$) transfers to states (Maystadt and Salihu, 2019).

As mentioned in Section 2, transfers from allocations and transfers make up most of state revenues, with allocation transfers comprising 65% of total state revenues over both the military and democratic periods. VAT transfers make up 14% and 16% of total state revenues in the military and democratic eras respectively. There are no clear spatial patterns in the distribution of transfers, with transfers featuring more or less prominently in total state

¹⁷There is no available complete public finance data between 1997 and 1999.

¹⁸The yearly data is also more complete than the monthly data so we use the reported yearly data here.

revenues in different regions of the country. In contrast, internally generated revenues appear to make up a larger share of total state revenues in Nigeria’s relatively wealthier southern states as shown in Figure 4¹⁹. While there is no detail provided on the breakdown of the state expenditures, 65% and 56% of total state spending come from recurrent expenditures in the military and democratic periods respectively; the corresponding figures for capital expenditures are 35% and 44%. Table A2 in Appendix A.1 provides a detailed summary of the public finance statistics.

4.2 Protests

To measure protests, we use two sets of geocoded data spanning the time period of our public finance data from 1988 to 2016. For protests from the democratic period between 2000 and 2016, we employ data from the widely used Armed Conflict Location and Event Data (ACLED) project which provides geocoded data on conflict events from media, newspaper and news agency sources (e.g. The Washington Post, The Associated Press, etc.), starting in 1997 (Raleigh et al., 2010). There are eight conflict event categories recorded in the ACLED database including organized group “battles” among others; our main variable of interest is the “protests and riots” category which we refer to as protest here. Since ACLED does not contain data from the military period from 1988 to 1996, we use another dataset, the Global Data on Events Location and Tone (GDELT) project, which similarly records geocoded data on conflict and mediation events similarly extracted from media and news agency sources over the 1979 to 1999 military period in our sample (Ward et al., 2013). GDELT includes twenty main event categories, including classifications like organized group “fights” or battles and, our main variable of interest, “protest”, including reported protest and riot events. For

¹⁹Located in the country’s southern region, Lagos and Rivers states were the only states where IGR, not transfers, made up the the majority of state revenues. 68% and 61% of Lagos state’s revenue came from IGR in the military and democratic eras respectively, while the corresponding figures for Rivers state were 53% and 63% as shown in Figure 4. The results outlined in Section 5 are robust to the exclusion of these two states.

the period of ACLED/GDELT data overlap, from 1997 to 1999 in our sample, there is a high, significant positive correlation between the number of protests recorded in the ACLED and GDELT datasets of 0.86 ($p < 0.001$).

Following the framework outlined in Section 3 and the historical accounts in Section 2, federal government leaders respond to local protests that are in high enough numbers to be notable within the country and require higher levels of state government effort to quell. We define ‘high, notable protests’ or protest intensity at the state level in two ways. First, as the state-level deviation of the numbers of protest events in each state from the national average numbers of protest events in each year or the state-level z-scores relative to the national mean within a particular year²⁰. The specification captures the relative intensity of protests within a state, and the sensitivity of federal government responses to marginal deviations in a state’s level of protests from the national average. The second measure defines protest intensity at the state level as strictly positive deviations from the national mean, or as an indicator that equals one if the state’s protest z-score is greater than zero. This measure provides an extensive margin estimate that captures the federal government response to relatively high versus low levels of protests within states. Other conflict measures, like battles, are defined similarly to the protest measures. Figure 5 shows the spatial distribution of the long-run averages of the protest and battles intensity indicator measures in the military and democratic periods. We primarily interpret results from the continuous z-score protest intensity measure, and provide the indicator results as an alternate measure of protest intensity.

There is a positive correlation (0.65, $p < 0.001$) between the protest intensity likelihood, measured as the long-run average of the protest intensity indicator, in the military and democratic periods. Details about protest locations are provided in Appendix A.2. The

²⁰Measured as $\frac{(x_{it}-\bar{x}_t)}{\sigma_t}$ where x_{it} is the sum of protest events in state i at time t , \bar{x}_t is the average number of protests in year t and σ_t is the standard deviation.

ACLED and GDELT datasets also list actors involved in protests for a small ($< 10\%$) subset of the data. The top three, non-state security forces, actors involved in protests in the democratic period from 2000 to 2016 are labor unions/workers, students and political party members. The GDELT categories are less detailed than their ACLED counterparts, with the top actors for protest participants in the military period listed as ‘Nigerians’ against the ‘government’.

4.3 Political Parties

To test hypotheses around the role of political alignment as a potential channel linking protests and revenue transfers, outlined in the framework in Section 3, we assemble a dataset of the political parties of state governors and presidents from 2000 to 2016 from publicly available data from various sources²¹. While at the presidential level, two parties, the People’s Democratic Party (PDP) and, more recently, the All People’s Congress (APC), have dominated presidential elections, with the president coming from PDP in 88% of years from 2000 to 2016, state level, gubernatorial elections have historically been a more competitive landscape. Between 2000 and 2016, ten parties have elected governors into office in Nigeria²². State electoral politics often assume a very local character, with ethnic/ethnoregional politics playing a major role in citizen preferences over parties in gubernatorial elections (Azeez, 2009)²³. This translates to notable heterogeneity in the likelihood of a governor being politically aligned with the president as shown in Figure 6. Notable after 2010, is the drop in the likelihood of governor-president party alignment, following the sudden death of

²¹Details are provided in Appendix A.3. There is no publicly available complete data on vote shares over the 5 electoral years between 2000 and 2016 in Nigeria.

²²Table A3 shows the distribution of parties over time. Gubernatorial elections are concurrent with presidential elections in approximately 87% of years over the democratic period. State governor party affiliations are largely stable over time; only in 1.5% of cases in the democratic sample do individual governors switch parties for reelection. And in 56% of those switches, the governor switches to an opposition party from the president’s party or from one opposition party to another.

²³As mentioned in Section 2, geographies correlate strongly with ethnicity in Nigeria, which in turn correlate strongly with local party politics in the country (Azeez, 2009).

then president Umaru Yar'Adua and the appointment of the first ever president from the south-south ethnic region, then vice-president Goodluck Jonathan. The appointment was met with subsequent electoral backlash in the southwest ethnic region in the 2011 elections, with PDP partly losing gubernatorial elections to a rival southwest ethnic region voting base heavy opposition party, the Alliance for Democracy (AD)²⁴. Further details on party politics in Nigeria are provided in Appendix A.3.

5 Protests and Fiscal Redistribution

5.1 Protests and Intergovernmental Transfers

We can examine the relationship between protests and intergovernmental transfers by estimating the following equation:

$$y_{st} = \phi \text{Protest}_{st} + \mu_s + \delta_t + \epsilon_{st} \quad (5)$$

where y_{st} is the outcome of interest for district or state s at year t . The main outcome of interest is total transfers (allocation or VAT) to state s in year t . This specification includes a set of unrestricted within-country district or state fixed effects, denoted by μ_s , which capture unobserved differences that are fixed across states, like population levels and geographic characteristics like landmass and terrain that are determinants of the standard formula for transfers as described in Section 2.1. The year fixed effects, δ_t , control for changes in national policies (e.g. fiscal policies) and other macro factors. Standard errors are clustered at the state level to allow for arbitrary correlations, and all regressions include both district and year fixed effects.

As described in Section 4.2, we measure “Protest” in two ways. Our main measure

²⁴As shown in Figure A7 in Appendix A.3.

is the Protest (Continuous) measure, which is the z-score, calculated as state level total number of protests deviation from the national mean level of protests within a year to capture the relative intensity of protests. To examine the sensitivity of government responses to significantly high, above country average levels of protest within states, we construct a Protest (Indicator) measure that is an indicator that equals one if the Protest (Continuous) measure is greater than zero. An important note here is our protest measure is not simply measuring the numbers of protests but capturing the relative number of protests to test the hypothesis in Section 3 that federal governments will respond to relatively high, notable levels of protests within a state, not just the raw numbers.

While we show balance across a number of geographic and institutional state characteristics of the protest measure in Table A4 in Appendix A.4, we interpret the results from Equation 6 as robust correlations due to the possible endogeneity of the protest measure.

5.1.1 Mechanisms: The Role of Political Alignment

To test the hypothesis presented in Section 3, that the primary channel linking protests and intergovernmental transfers is political alignment with federal governments increasing transfers to aligned states and reducing transfers to non-aligned states, we estimate Equation 6 below:

$$y_{st} = \alpha \text{Protest}_{st} + \beta \text{GP Aligned}_{st} + \gamma \underbrace{\text{Protest}_{st} \times \text{GP Aligned}_{st}} + \mu_s + \delta_t + \epsilon_{st} \quad (6)$$

where “GP Aligned” is an indicator that equals one if the president and state governor come from the same political party. Note, that as mentioned in Section 3, during the military period, “GP Aligned” is always equal to one and Equation 6 estimates the same model as

Equation 5, since state governors are military president appointees.

Our key parameter of interest γ (where γ in Equation 6 equals ϕ in Equation 5 during the military period) provides a statistical test of the difference in transfers in aligned versus non-aligned areas.

5.2 OLS Estimates

Figure 7 shows average VAT and allocation transfers in each year from 2000 to 2016. Trends in the raw data point to higher transfers in protesting areas, though with notably more variance among the less publicized VAT transfers than the more publicly announced allocation transfers, following the account in Section 2.1. We present the OLS estimates for the effects of protests on intergovernmental transfers over the military period in column (1), (2), (4) and (5) of Panel A of Table 1. We present a falsification test using internally generated revenue (IGR) as the outcome in column (3) and column (6) of Panel A. All revenue outcomes are log real (2010 Nigerian Naira) values. For inference robustness and to account for potentially low numbers of clusters, we also report wild cluster bootstrap p-values derived from running 1000 replications in each instance. The results from our main measure of protest, the continuous protest z-score, indicate that protests are significantly positively associated with both VAT and allocation transfers, but not with IGR. Column (1) of Panel A indicates that a one standard deviation increase in a state's number of protests, relative to the national mean, increases the VAT transfers to the state by 5.2%. A one standard deviation increase in protest intensity increases the allocation transfers to states by 6.8%. The results are similar when we examine the effects of protests using the indicator measure in column (4) and column (5) of Panel A. High intensity protests, as measured by the indicator, increase VAT transfers by 11.5%. The effects are particularly robust for VAT transfers, the less public category of intergovernmental transfers.

As a falsification test, to check that the protest effect results in Panel A of Table 1 are not driven by other conflict events occurring in the state, we examine the relationship between events coded as “Fights” or armed group battle events in the GDELT data and the intergovernmental transfer and IGR outcomes. We refer to this category as battles here. There is no robust association between battles recorded within a state and intergovernmental transfers as shown in Panel B of Table 1. When we assess all conflict and mediation events registered in the GDELT database within a state, the results in Panel C show no robust links between general event intensity and transfers to states; high event intensity is positively associated with IGR in column (6) of Panel C.

We estimate Equation 5 for the democratic period and examine the effects of protests on intergovernmental transfer and IGR outcomes. Table 2 reports estimates of the effects. Using the continuous protest measure, protests are weakly positively associated with VAT transfers in column (1) of Panel A. Protests are significantly negatively associated with allocation transfers to states in column (2) and column (5) of Panel A. Specifically, a one standard deviation increase in a state’s number of protests, relative to the national mean, decreases allocation transfers by a small, but significant point estimate of 0.5%. High intensity protests, as measured by the indicator, decrease allocation transfers by 0.7%. There is no robust association between battles or other conflict events recorded within a state and intergovernmental transfers as shown in Panel B and Panel C, respectively, of Table 2. To what extent does variation in political alignment between state governors and presidents in the democratic period rationalize the differing results for the relationship between protests and transfers in the democratic period? To answer this, we estimate Equation 6 and examine heterogeneity in the effects of protests on transfers by party alignment.

The results are shown in Table 3. Panel A of Table 3 reports estimates of the effects of protests on transfers and IGR by political alignment status of state governors and presidents.

Column (1) of Panel A indicates that while protests are negatively associated with VAT transfers in non-aligned areas, they are positively associated with transfers in aligned areas. A one standard deviation increase in a state’s protest intensity relative to the national mean increases VAT transfers to that state by 4% over the democratic period. High intensity protests, as measured by the protest indicator, increase VAT transfers by 6.6% (column (4) of Panel A). Inversely, in non-aligned states, a one standard deviation increase in a state’s relative protest intensity is associated with an 1.1% decrease in VAT transfers to the state. Similarly, the negative association between protests and allocation transfers are driven by reduced transfers to non-aligned states in column (2) and column (5) of Panel A. There is no association between battles and transfers by political alignment in Panel B. Political alignment in general is also positively associated with higher levels of VAT transfers.

5.3 Instrumental Variable Estimates

The results presented in Table 1, Table 2 and Table 3 suggest that there are significant correlations between protests and intergovernmental transfers. Examining battles and other conflict outcomes also helps us partly address concerns of reverse causality, with the idea that if transfers increase protests through conflict over resources, they should increase conflict generally within the country. However, this does not identify the causal effect of protest on intergovernmental transfers, and there may still be concerns about reverse causality. Additionally, given the accounts of protests being driven by economic conditions in Section 2.2, it is possible that there is an omitted variable that both determines protests and intergovernmental transfers. To address this concern, we present results using an instrumental variables (IV) approach. A relevant instrument will predict a state’s protest intensity but will not affect intergovernmental transfers through any other channel than through protests.

As mentioned in Section 3, there is a growing social science literature on the causes of protests that has highlighted the costs of coordination and the role of economic downturns

as being important joint drivers of protests (Enikolopov, Makarin, and Petrova, 2020; Manacorda and Tesei, 2020; Battaglini, 2017; Madestam et al., 2013). Guided by this literature, we construct an instrument that is the interaction between two components: (1) the level of ethnolinguistic similarity in a state and (2) the share of states experiencing a negative economic shock within the year. The interacted instrument takes the form in Equation 7

$$\text{Ethnolinguistic Similarity x Negative Shock Year}_{st} = \text{ES}_s \times \left[\frac{1}{N} \sum_{n=1}^N NS_n \right]_t \quad (7)$$

where Ethnolinguistic Similarity measures the degree of linguistic similarity, measured by linguistic distance between ethnic groups in state s , and Negative Shock Year is the proportion of states experiencing a negative economic shock within the year, defined relative to extreme rainfall shocks. We first explain the logic behind each component, and then any discuss potential concerns with the instrument and how we address them.

The first component of the instrument addresses the cost of coordination for protest, and is the degree of ethnolinguistic similarity measure adapted from Gershman and Rivera (2018)’s ethnolinguistic diversity, ELF_δ based on the widely used ethnolinguistic fractionalization (ELF) measure²⁵. which captures the probability that . The ELF_δ value measures the level of ethnolinguistic diversity within regions at different distance parameters δ . δ can vary between 0.01 to 1, with higher values of δ signifying greater weight given to linguistic distance between groups. We choose δ equal to 0.2 to more strongly capture linguistic distance between ethnic groups in s ²⁶. We adapt the Gershman and Rivera (2018) mea-

²⁵ELF “captures the probability that two randomly chosen residents in the region belong to distinct ethnolinguistic groups” (Gershman and Rivera, 2018).

²⁶Our results are robust to marginal changes in the choice of δ , with tables available upon request. See Gershman and Rivera (2018) for details on the ethnolinguistic diversity measure, and we provide further details in Appendix A.5.

sure by multiplying it by -1 so that higher values represent more ethnolinguistic similarity. The ethnolinguistic similarity measure captures the fact that language may be a significant barrier to collective action for protest, inasmuch as it represents a barrier to easy communication. Regions with more people from ethnicities that speak the same language may have an easier time of communicating to organize for protests. There is also relatively little inter-district migration in Nigeria as has been documented in other work (Archibong, 2019; Nunn and Wantchekon, 2011), with significant and high levels of correlation (0.7, $p < 0.001$) documented between the locations of ethnic groups in the precolonial period (c. 1850) and contemporary data from 2000 to 2014 (Archibong, 2019; Nunn and Wantchekon, 2011). Using ethnolinguistic similarity, rather than just ethnic fractionalization also allows us to plausibly test that the instrument affects protests through effects on communication as the primary channel.

The second component of the instrument addresses the role of economic downturns in spurring protests, and is the share of states that experienced a negative economic shock within the year. A major share of workers are employed in agriculture in Nigeria²⁷. Agriculture is primarily rain-fed with irrigated agriculture accounting for only 1% of cultivated area in the country (Xie, You, and Takeshima, 2017). The combination of these facts means that economic conditions of domestic populations are sensitive to sudden unexpected changes in rainfall that may reduce crop yields and respective agricultural incomes (e.g. through droughts or floods) (Archibong and Obikili, 2020). We use satellite data on precipitation from the NASA MERRA-2 dataset, and adapt the strategy from Archibong and Obikili (2020) to estimate extreme rainfall shocks that reduce crop yields relative to cutoffs in a district's yearly rainfall deviation from its long-term mean over 1980 to 2016. Following evidence from crop yield data and the agricultural literature outlined in Archibong and

²⁷Estimates range between 37% and 70% as of 2016 by World Bank and Food and Agriculture Organization (FAO) statistics respectively.

Obikili (2020), we then define a district as having experienced an extreme rainfall shock if it has experienced a drought or flood in that year²⁸. We estimate the share of districts that have experienced extreme rainfall shocks in a particular year and use this as our measure of a “Negative Shock Year”, with higher values indicating worse economic years or economic downturns. The value ranges between 0 and 1, where 0 is no states experiencing shocks in the year and 1 is all states experiencing extreme rainfall shocks in the year. Reassuringly, our negative shock year measure is significantly negatively correlated with GDP growth, particularly in the democratic period (-0.63, $p < 0.001$).

Given concerns that the instrument may directly affect intergovernmental transfers or that it may affect transfers through a channel other than protests, we also present two falsification tests for the instrument. The first falsification test leans on the assumption that the interacted instrument is capturing lowered costs of coordination with ethnolinguistic similarity that allows for easier communication to organize protests during economic downturns when people may have more grievances against the government as a result. The reduced costs of coordination requires that people who speak the same language actually have a way to speak to each other easily and share information over potentially large distances to organize or mobilize protests more efficiently. Information and communication technology (ICT), and in particular mobile phones, help facilitate this process (Manacorda and Tesei, 2020). So our interacted ethnolinguistic similarity instrument should predict protests strongly only in areas that have achieved some threshold level of mobile phone penetration if the communication channel is correct. Since in Nigeria, before 2000, mobile cellular subscriptions per 100 people was essentially 0 before rising to 83 per 100 people in 2016 by World Bank estimates, our interacted ethnolinguistic similarity instrument should not strongly predict protests over the military period before the introduction of mobile phones. In the democratic period, it should

²⁸Droughts and floods are defined as in Archibong and Obikili (2020), an an indicator equals one if the district’s rainfall deviation z-score is > 0.75 (floods) or < -0.5 (droughts). See Archibong and Obikili (2020) for details.

more strongly predict protests in states that have achieved some threshold level of mobile phone penetration where same language speaking residents can benefit from communication network externalities to more easily organize protests during economic downturns.

The second falsification test is that our interacted ethnolinguistic similarity instrument should positively predict protests but not intergroup armed conflict like battles if people from similar groups are more cooperative and less likely to fight with each other (Montalvo and Reynal-Querol, 2005). Table 4, along with Table A6 and Table A7 in Appendix A.5, presents the results from both falsification tests. The interacted ethnolinguistic similarity instrument strongly predicts protest, but only in the democratic period after the introduction of mobile phones. Within the democratic period, the association between the instrument and protests is stronger in states with some threshold level of mobile phone ownership (Table A.5). The instrument is negatively associated with battles in both the military and democratic periods (Table A6). These results, along with further falsification tests examining the reduced form relationship between the interacted ethnolinguistic instrument and intergovernmental transfers in Section 5.4 suggest that the interacted ethnolinguistic similarity with negative shock year instrument does not directly affect intergovernmental transfers.

Panel A of Table 5 presents the first stage estimates for the instrument- using the interaction between ethnolinguistic similarity and the share of states experiencing negative economic shocks in the year. The instrument predicts the continuous protest intensity measure, with an F-stat over 10 in all specifications. Panel B of Table 5 presents the second stage estimates with VAT transfers as the outcome in column (1) and column (2) and allocation transfers as the outcomes in column (3) and column (4). The comparison OLS estimates are shown in Panel C. The second stage OLS estimates suggest that a one standard deviation increase in a state's relative protest intensity decreases allocation transfers by 2% on average, compared to the close, but slightly lower 0.5% decrease predicted by the OLS estimates in

column (3) and column (4) of Panel C. The point estimates in the second stage for the VAT transfers are imprecisely measured, an issue that can arise with small sample sizes in IV regression (Angrist and Krueger, 2001), but qualitatively similar to the OLS estimates in the specification in column (2), which includes controls for political alignment²⁹.

5.4 Other Falsification Tests

One concern with the results from Section 5.3 is that the suggested instrumental variable does not satisfy the exclusion restriction. In other words, that ethnolinguistic similarity interacted with negative shock year might affect intergovernmental transfers through channels other than protests. Given that the instrument is an interaction of two separate terms, this is less of a concern here, but given possible concerns about the violation of the exclusion restriction, in addition to the two falsification tests exploiting the distribution of mobile phone technology within Nigeria and over time and using battles as a check, we can also examine the reduced form effect of the interacted ethnolinguistic similarity instrument on transfers. We can also examine if, following the results on political alignment in, Table 3, we find similar results on alignment using the interacted ethnolinguistic similarity instrument. Table 6 presents the results for the reduced form estimates. For VAT transfers, there is no relationship between the instrument and VAT transfers across all specifications in column (1) to column (3). For allocation transfers, though the instrument is negatively associated with allocation transfers in column (4) and (5), the magnitudes are notably larger than the magnitudes estimated in Table 3 and the association is not robust to the inclusion of controls political alignment in column (6). Thus the falsification tests presented in Section 5.3 and Table 3 suggest that the instrument does not directly affect transfers.

²⁹We encounter similar issues around small sample sizes when trying to instrument to estimate equations including the interaction term for political alignment in Table A8. The results including the interaction term are largely qualitatively similar, but with imprecise point estimates in the second stage.

6 Examining Policing and State Expenditure Outcomes

6.1 Policing

The results presented so far provide evidence that federal governments respond to protests by redistributing fiscal transfers, in line with the framework in Section 3. Another important way governments may respond to protests is through increased repression, employing state-sponsored violence against protesters following the historical accounts in Section 2.2. The Nigerian Police Force is a national body, as designated by Nigeria’s 1999 constitution, under the general operational and administrative authority of an Inspector General appointed by the president and charged with maintaining security in the country (Akuul, 2011). The police are also a primary instrument of state violence, a fact which was a major driver of protests in the anti police brutality End SARS movement described in Section 2.2. To test the hypothesis that governments may also respond to protests by increasing state-sponsored violence against protesters, we examine whether protests are associated with more policing, measured as the share of police among protest actors documented in the ACLED data. The ACLED data over the democratic period provides the most detailed record of actors in protests as discussed in Section 4, so we report results from this dataset here. Since more policing does not necessarily mean more police violence, we check the ACLED notes for qualitative details from newspaper accounts coded by independent researchers describing actions of police towards protesters. While the notes are usually unique, non-repeating entries, the most frequently occurring note, repeated at least six times in the notes sample, is “Police disperse protest violently”. 58% of cases involving police as actors during protests documented in the notes, include mentions of police firing tear gas, shooting, killing, or otherwise clashing with protesters. The notes provide suggestive evidence that a higher share of policing in protesting areas is associated with more police violence against protesters.

As a falsification test, we examine the share of other major actors in protests, including the military, political parties, and labor unions³⁰. We also examine the share of these actors in battles, following the previous specifications. Table 7 reports the estimates of the effects of protests on policing using the continuous measures of protest intensity. The results in Panel A show that protests are strongly positively associated with policing. A one standard deviation increase in the protest measure increases policing by 2.6% on average (column (1) of Panel A). The effects differ significantly for politically aligned versus non-aligned states as shown in column (2) of Panel A. While protests are associated with an increase in policing in non-aligned areas, they are associated with reduced policing in politically aligned states. There is no effect of protests on the share of military actors involved (column (3) and column (4) of Panel A). Column (5) and column (6) of Panel A present suggestive evidence that protests are associated with increased political party actor involvement, particularly in non-aligned states (column (6)). In other words, political parties tend to comprise relatively higher shares of participants in protests in non-politically aligned states, in line with the historical account in Section 2.2 and the framework in Section 3.

Panel B reports the results of the falsification test examining the effects of battles on policing and the other actor involvement. There is no significant association between battles and policing as shown in column (1) and column (2) of Panel B. Battles are strongly associated with increased military involvement (column (3) and column (4)), and significantly negatively associated with political party involvement (column (5) and column (6)). Taken altogether, the results in Table 7 suggest that protests increase policing and police violence against protesters, particularly in states that are not politically aligned with disbursing federal governments. In contrast, protests are associated with decreased police violence against protesters in aligned states.

³⁰Results from the labor union outcomes are presented in Appendix A.6.

6.2 State Expenditure

In Section 2.2, we document that a major stated grievance among protesting public sector union workers is, and has historically been, non-payment of salaries. While there is no publicly available data on the details of state spending in Nigeria, evidence from the scholarly literature highlights that the major category for state recurrent expenditure is spending on salaries and personnel costs of public sector employees, while capital spending includes spending on new infrastructure like schools and health facilities (Asimiyu, Kizito et al., 2014). To test the hypothesis that protests may be higher in areas with more unpaid salaries of public sector workers, proxied by less state recurrent expenditure, we examine state expenditure outcomes in Table 8.

There is a significant negative association between protest intensity and state recurrent expenditures in the military period as shown in Panel A of Table 8. A one standard deviation increase in protest intensity is associated with a decrease in recurrent expenditure by 5% (column (1) of Panel A), and high protest intensity, using the indicator measure, is associated with a decrease in recurrent expenditure by 16% (column (3)). There is no significant association between protest intensity and capital expenditures in the military period. Panel B of Table 8 reports estimates of the links between protests and state expenditures in the democratic period. Protests, using the indicator measure, are negatively associated with recurrent expenditures (column (3)) of Panel B), with similar coefficient magnitudes to the military period (10.7%). There is no significant difference in the association between protests and state expenditure by political alignment in the democratic period as shown in Panel C. The results from Table A9 in Appendix A.6 showing relatively higher labor union participation in protests, with no significant difference by political alignment, also provide suggestive evidence of the public sector worker grievance links with protests, in line with the reduced recurrent expenditure results.

7 Conclusion

Can protests lead to meaningful changes in government policy, particularly around the redistribution of economic resources? We address this question and examine the effects of protests on fiscal redistribution using evidence from Nigeria over its military and democratic periods from 1988 to 2016. Nigeria’s highly centralized fiscal system makes it an informative region to study government economic responses to protests in a heavily consolidated-top-down revenue sharing system where government can choose to respond to ostensibly economic grievance-driven protests by directly disbursing fiscal resources.

We construct a new dataset from 26 years of archival records on public finance from 1988 to 2016 and test the predictions of a conceptual framework that federal governments with full control of revenue transfers to states will transfer more or less revenues to states in response to protests depending on the perceived marginal cost of effort on the part of state government leaders to quell protests that may be destabilizing to the federal government leader’s tenure in office. The dataset provides an important addition to the sparse data landscape on subnational public financing, particularly in African countries. We provide evidence showing that federal governments respond to protests by increasing or decreasing revenue transfers to states. In line with the predictions of the framework, political party alignment, as a proxy for perceived cost of effort of state government leaders in quelling protests, can explain the heterogeneity in federal government responses to protests. Protests increase revenue transfers from disbursing federal governments to states only in states that are politically aligned with the federal government; protests reduce transfers to non-aligned states. Other conflict effects like battles are not associated with transfers, and protests have no effect on non-transfer revenue.

We use an instrumental variables strategy to examine how protests affect federal gov-

ernment disbursement of transfers to protesting regions. We construct a new instrument that exploits the costs of coordination for protests during economic downturns to predict protest intensity. We find IV estimates consistent with our correlation results that federal governments respond to protests by redistributing fiscal transfers. We conduct a number of falsification tests for our instrument and demonstrate that our instrument only has predictive power for protests over periods with some threshold level of ICT mobile phone technology to facilitate easier communication for protest mobilization.

Given that responses to protests by governments are not only fiscal and can include increased violence against protesters, we examine the effects of protests on policing. We find suggestive evidence that protests increase policing and police violence against protesters, particularly in states that are not politically aligned with disbursing federal governments. In contrast, protests are associated with decreased police violence against protesters in aligned states. Lastly, we examine the association between protests and state expenditure and document significant negative associations between protests and recurrent expenditure, providing suggestive evidence for the grievance based claims of, in particular, protesting public sector workers around non-payment of salaries.

The results provide evidence that protests can influence fiscal redistribution. The ways in which they do this depends on the political relationships within governments and between disbursing federal governments and protesting regions. Governments can also respond to protests with increased state violence against protesters. Further research is needed to assess the links between protests and other economic redistribution like public good provision within states³¹.

³¹We provide a brief blueprint for an exploration of this topic in Appendix A.7.

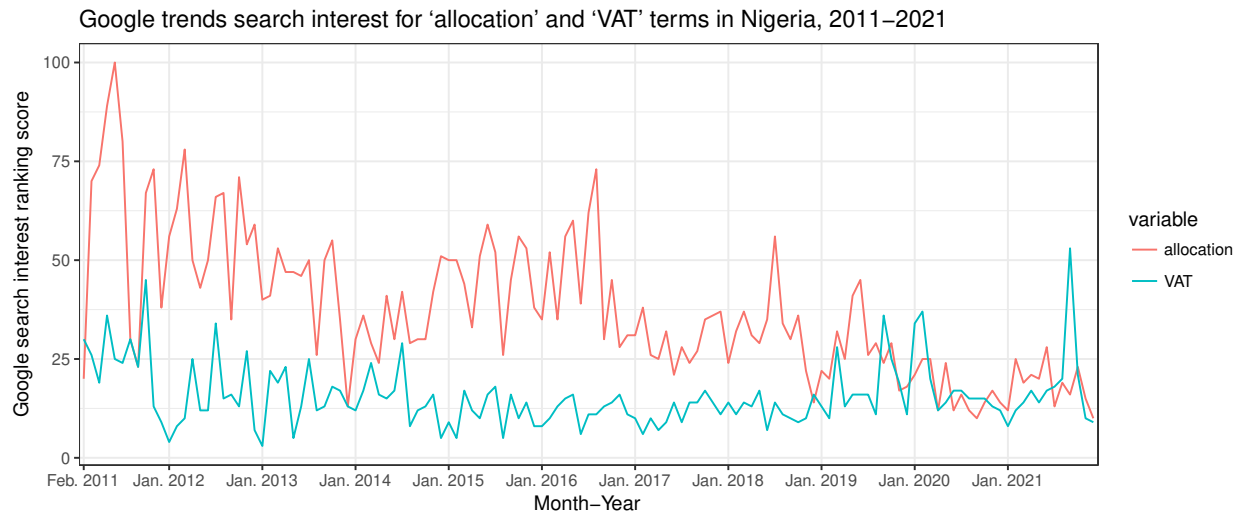


Figure 1: Google trends search interest ranking scores for 'allocation' and 'VAT' terms in Nigeria, 2011-2021

Table 381
 SUMMARY OF STATE GOVERNMENTS FINANCES - 1990

State	Revenue			Expenditure			Capital Expenditure			Financial Position		
	1990	1989	1990	1989	% Chg.	1990	1989	% Chg.	1990	1989	% Chg.	
Adamawa	775.8	102.2	172.0	68.0	1,176.0	776.5	597.7	1,200.0	408.0	3.0	7.3	
Bauchi	878.4	107.5	57.0	-	1,477.5	897.7	546.6	1,767.0	374.8	497.0	477.0	
Benue	902.2	107.5	272.0	276.1	1,076.9	1,076.4	594.6	1,767.0	374.8	497.0	477.0	
Borno	738.7	115.9	295.0	342.8	1,395.3	1,272.8	594.6	1,767.0	374.8	497.0	477.0	
Delta	1,026.9	178.4	268.0	124.0	1,251.0	1,275.1	1,088.0	597.2	1,481.2	481.4	39.9	
Ebonyi	877.8	102.0	94.0	-	1,073.0	1,095.0	597.2	1,481.2	481.4	39.9	39.9	
Edo	897.1	104.0	100.0	84.8	1,088.0	1,095.0	597.2	1,481.2	481.4	39.9	39.9	
Imo	790.9	117.4	181.0	76.0	1,107.8	778.0	597.2	1,481.2	481.4	39.9	39.9	
Kogi	972.8	108.0	100.0	100.0	1,405.2	1,316.4	481.4	1,481.2	481.4	39.9	39.9	
Kwara	776.2	119.8	130.0	115.5	1,076.8	1,082.0	598.0	1,767.0	374.8	497.0	477.0	
Lagos	835.5	107.4	236.0	74.8	1,278.2	1,316.5	891.5	1,470.0	481.4	39.9	39.9	
Niger	911.3	104.8	263.0	86.5	1,566.5	1,075.5	891.5	1,288.8	299.8	369.2	36.8	
Nigeria	832.0	116.4	76.8	51.0	1,561.0	915.0	891.5	1,767.0	481.4	39.9	39.9	
Ogun	1,174.7	238.8	286.8	-	1,705.7	1,055.0	898.0	2,504.0	373.8	461.2	36.8	
Ondo	1,566.2	233.2	286.0	317.2	1,511.5	1,888.5	819.0	2,734.2	615.2	374.2	39.9	
Osun	1,276.8	152.0	370.8	-	1,576.5	1,051.0	804.0	1,522.8	524.8	275.0	29.9	
Plateau	951.7	128.8	149.5	11.0	1,252.1	889.5	474.8	1,522.8	524.8	275.0	29.9	
Rivers	605.3	106.5	77.0	108.8	990.1	867.0	577.5	1,286.5	545.1	74.8	6.0	
Sokoto	742.2	116.8	190.0	-	995.0	565.0	202.0	30.0	412.2	108.4	10.4	
Taraba	931.9	669.7	2,546.0	38.4	4,560.2	2,897.0	1,319.5	4,276.7	1,288.7	38.4	38.4	
Yobe	804.2	119.8	30.8	-	923.8	378.0	276.0	68.8	484.8	104.8	10.4	
Zamfara	876.8	107.7	277.4	20.0	1,341.7	991.5	294.4	1,271.7	588.8	464.8	46.8	
Total	1,038.0	107.0	208.1	-	1,388.0	1,062.7	894.4	1,767.0	522.0	317.7	15.5	
ADP	954.6	101.5	234.4	53.0	1,452.5	1,048.6	538.2	1,388.8	385.9	45.9	45.9	
MDP	868.1	209.8	470.7	153.8	1,388.0	1,413.0	888.7	1,478.2	548.0	202.0	20.2	
MDP	1,068.5	107.8	286.8	-	1,540.5	1,074.8	2,046.2	74.9	1,103.7	398.8	215.0	
MDP	1,011.2	100.1	228.8	1.1	2,430.4	2,197.1	109.9	2,481.2	41.1	41.8	41.8	
MDP	1,068.0	102.0	132.0	64.0	1,299.0	1,024.0	299.0	607.5	103.8	103.8	103.8	
MDP	1,068.0	108.4	215.4	30.0	1,434.4	1,545.9	311.4	1,515.5	202.5	49.1	49.1	
MDP	868.8	118.2	107.8	97.8	1,261.5	1,014.8	893.1	1,451.0	308.7	96.8	96.8	
Total	21,047.5	5,408.7	9,068.8	5,068.4	46,244.0	31,778.4	16,982.1	32,867.4	14,867.4	2,847.7	2,384.3	

Source: Central Bank of Nigeria.

Note: 1 - Revised
 2 - Indicates gross allocation to State Government.

Figure 2: Example of archival data (1990) on public finance from the 1997 Annual Abstract of Statistics

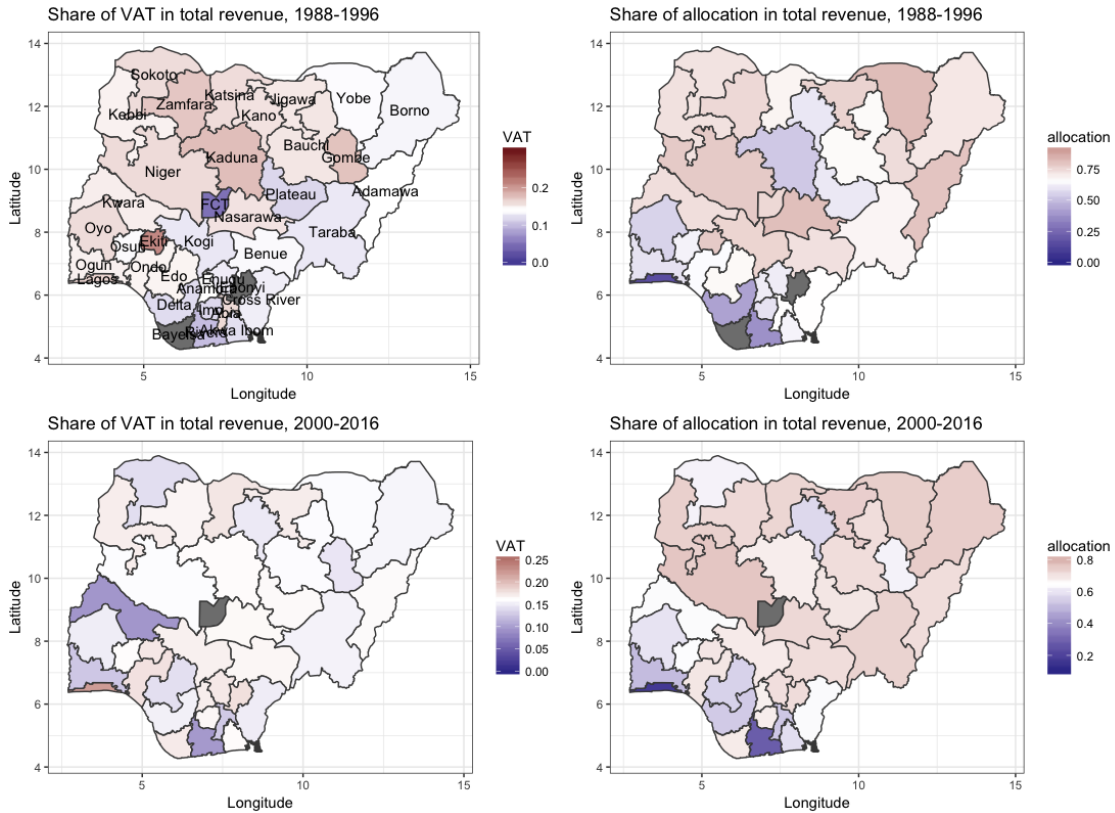


Figure 3: Share of intergovernmental transfers (VAT and Allocation) in total revenues in military (1988-1996) and democratic (2000-2016) periods

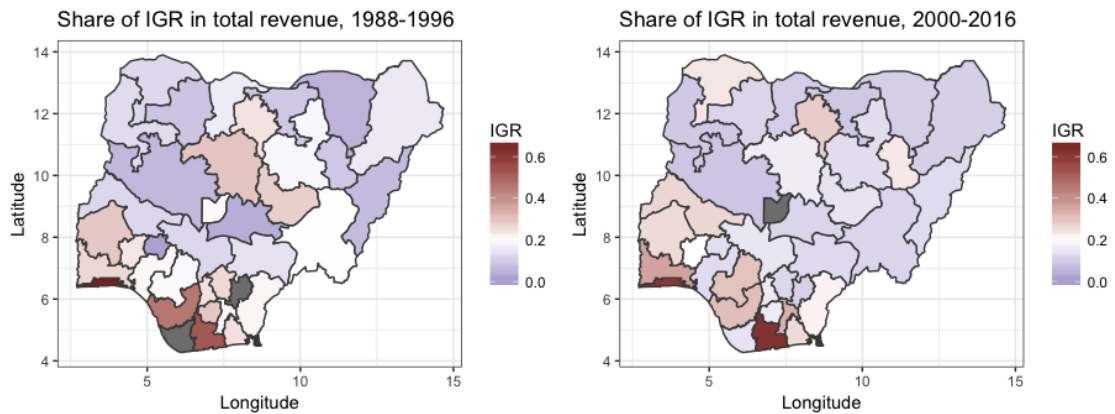


Figure 4: Share of internally generated revenue (IGR) in total revenues in military (1988-1996) and democratic (2000-2016) periods

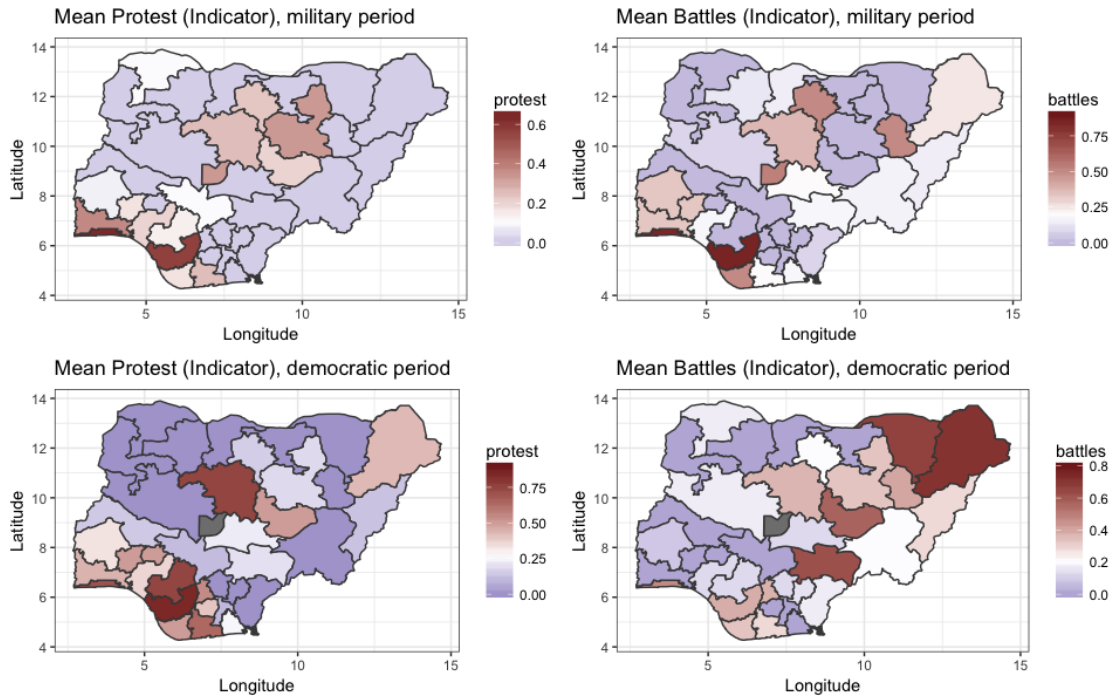


Figure 5: Mean protest and battles (indicator measure) in military period (1979-1999) and democratic period (2000-2016)

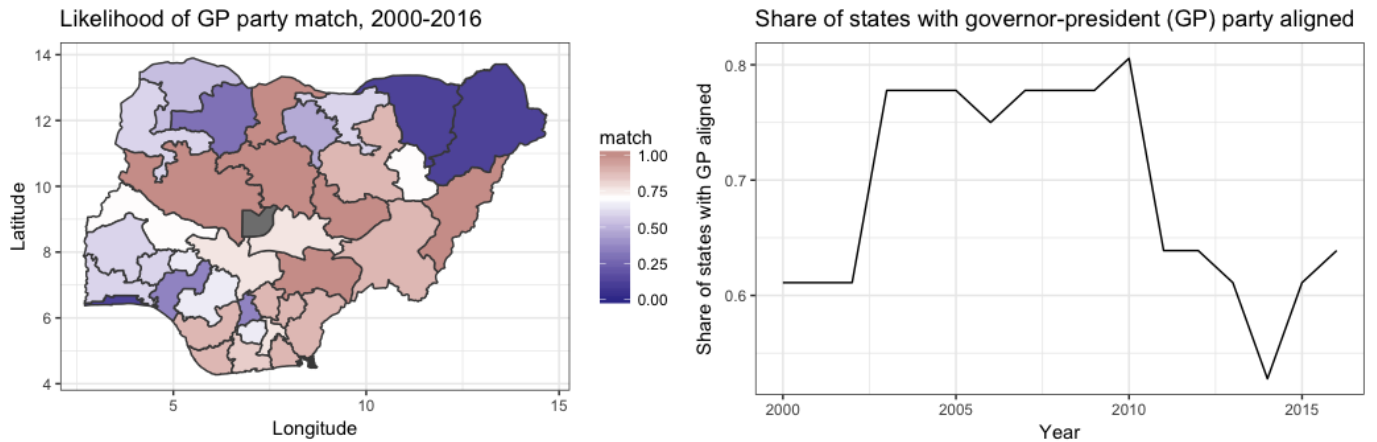


Figure 6: Likelihood of governor-president (GP) party alignment in the democratic period

Table 1: OLS Estimates: Protest, other events and intergovernmental transfers (VAT, Allocation) and internally generated revenue (IGR), military period

Panel A: Protest and State Revenue Outcomes						
Covariate Measure:	Protest (Continuous)			Protest (Indicator)		
	Outcome:	VAT	Allocation	IGR	VAT	Allocation
	(1)	(2)	(3)	(4)	(5)	(6)
Protest	0.052*** (0.012) [0.005]	0.068** (0.031) [0.201]	-0.029 (0.040) [0.609]	0.115* (0.061) [0.306]	0.172 (0.114) [0.271]	-0.210 (0.129) [0.211]
Mean of outcome	8.022	9.821	8.448	8.022	9.821	8.448
<i>Observations</i>	61	101	86	61	101	86
<i>Clusters</i>	31	35	33	31	35	33
Panel B: Battles (Armed Conflict) and State Revenue Outcomes						
Covariate Measure:	Battles (Continuous)			Battles (Indicator)		
	Outcome:	VAT	Allocation	IGR	VAT	Allocation
	(1)	(2)	(3)	(4)	(5)	(6)
Battles	-0.005 (0.013) [0.716]	0.109* (0.058) [0.243]	-0.032 (0.059) [0.641]	-0.027 (0.031) [0.442]	0.136 (0.092) [0.203]	-0.113 (0.088) [0.296]
Mean of outcome	8.022	9.817	8.448	8.022	9.817	8.448
<i>Observations</i>	73	132	106	73	132	106
<i>Clusters</i>	32	35	33	32	35	33
Panel C: All Events and State Revenue Outcomes						
Covariate Measure:	All (Continuous)			All (Indicator)		
	Outcome:	VAT	Allocation	IGR	VAT	Allocation
	(1)	(2)	(3)	(4)	(5)	(6)
All Events	-0.018 (0.026) [0.529]	0.223* (0.114) [0.486]	0.143 (0.142) [0.399]	0.009 (0.031) [0.802]	0.131 (0.085) [0.182]	0.374** (0.163) [0.092]
Mean of outcome	8.073	9.842	8.282	8.073	9.842	8.282
<i>Observations</i>	108	206	170	108	206	170
<i>Clusters</i>	35	36	34	35	36	34
District FE	Yes	Yes	Yes	Yes	Yes	Yes
Year FE	Yes	Yes	Yes	Yes	Yes	Yes

Notes: Regressions estimated by OLS. Robust standard errors in parentheses clustered by district. Districts are administrative states in Nigeria. Wild cluster bootstrap (by district) p-values are in brackets. Dependent variables are intergovernmental transfers: log real VAT and state allocations, and log real internally generated revenue (IGR) at the state level as described in text. Protest is the continuous z-score measure of protests from the GDELT data in columns (1) to (3) and the indicator that equals one if the z-score is greater than 0 in columns (4) to (6) as described in text. Cooperation is defined similarly relative to the Z-score. ***Significant at the 1 percent level, **Significant at the 5 percent level, *Significant at the 10 percent level.

Table 2: OLS Estimates: Protest, other events and intergovernmental transfers (VAT, Allocation) and internally generated revenue (IGR), democratic period

Panel A: Protest and State Revenue Outcomes						
Covariate Measure:	Protest (Continuous)			Protest (Indicator)		
Outcome:	VAT	Allocation	IGR	VAT	Allocation	IGR
	(1)	(2)	(3)	(4)	(5)	(6)
Protest	0.007*	-0.005***	-0.026	0.002	-0.007**	-0.031
	(0.004)	(0.002)	(0.045)	(0.009)	(0.003)	(0.083)
	[0.202]	[0.024]	[0.603]	[0.810]	[0.063]	[0.748]
Mean of outcome	22.611	24.057	22.777	22.611	24.057	22.777
<i>Observations</i>	352	352	131	352	352	131
<i>Clusters</i>	36	36	36	36	36	36
Panel B: Battles (Armed Conflict) and State Revenue Outcomes						
Covariate Measure:	Battles (Continuous)			Battles (Indicator)		
Outcome:	VAT	Allocation	IGR	VAT	Allocation	IGR
	(1)	(2)	(3)	(4)	(5)	(6)
Battles	-0.007	0.003*	-0.042	-0.019	0.007*	0.044
	(0.016)	(0.002)	(0.101)	(0.022)	(0.004)	(0.164)
	[0.825]	[0.109]	[0.737]	[0.633]	[0.102]	[0.796]
Mean of outcome	22.488	24.098	22.727	22.488	24.098	22.727
<i>Observations</i>	283	283	116	283	283	116
<i>Clusters</i>	36	36	36	36	36	36
Panel C: All Conflict Events and State Revenue Outcomes						
Covariate Measure:	All (Continuous)			All (Indicator)		
Outcome:	VAT	Allocation	IGR	VAT	Allocation	IGR
	(1)	(2)	(3)	(4)	(5)	(6)
All Events	-0.005	0.002	-0.041	0.006	0.005	0.078
	(0.015)	(0.001)	(0.096)	(0.006)	(0.004)	(0.143)
	[0.867]	[0.253]	[0.778]	[0.272]	[0.238]	[0.633]
Mean of outcome	22.488	24.098	22.727	22.488	24.098	22.727
<i>Observations</i>	352	352	131	352	352	131
<i>Clusters</i>	36	36	36	36	36	36
District FE	Yes	Yes	Yes	Yes	Yes	Yes
Year FE	Yes	Yes	Yes	Yes	Yes	Yes

Notes: Regressions estimated by OLS. Robust standard errors in parentheses clustered by district. Districts are administrative states in Nigeria. Wild cluster bootstrap (by district) p-values are in brackets. Dependent variables are intergovernmental transfers: log real VAT and state allocations, and log real internally generated revenue (IGR) at the state level as described in text. Protest is the continuous z-score measure of protests from the ACLED data in columns (1) to (3) and the indicator that equals one if the z-score is greater than 0 in columns (4) to (6) as described in text. Battles and All conflicts are defined similarly to protest. ***Significant at the 1 percent level, **Significant at the 5 percent level, *Significant at the 10 percent level.

Table 3: OLS Estimates: Protest, other events and intergovernmental transfers (VAT, Allocation) and internally generated revenue (IGR), democratic period by GP Aligned status

Panel A: Protest and State Revenue Outcomes						
Covariate Measure:	Protest (Continuous)			Protest (Indicator)		
Outcome:	VAT	Allocation	IGR	VAT	Allocation	IGR
	(1)	(2)	(3)	(4)	(5)	(6)
Protest	-0.011** (0.005) [0.146]	-0.003*** (0.001) [0.000]	0.011 (0.060) [0.885]	-0.028 (0.018) [0.197]	-0.007** (0.004) [0.060]	0.108 (0.109) [0.337]
Governor-President (GP) Aligned	0.044*** (0.011) [0.000]	-0.002 (0.005) [0.707]	-0.081 (0.229) [0.755]	0.018** (0.009) [0.045]	-0.002 (0.005) [0.698]	0.024 (0.219) [0.902]
Protest x GP Aligned	0.040*** (0.010) [0.000]	-0.004 (0.005) [0.736]	-0.079 (0.108) [0.505]	0.066** (0.031) [0.095]	-0.0003 (0.007) [0.965]	-0.242 (0.152) [0.107]
Mean of outcome	22.488	24.098	22.727	22.488	24.098	22.727
Observations	352	352	131	352	352	131
Clusters	36	36	36	36	36	36
Panel B: Battles (Armed Conflict) and State Revenue Outcomes						
Covariate Measure:	Battles (Continuous)			Battles (Indicator)		
Outcome:	VAT	Allocation	IGR	VAT	Allocation	IGR
	(1)	(2)	(3)	(4)	(5)	(6)
Battles	-0.030 (0.034) [0.509]	0.004 (0.002) [0.390]	-0.221 (0.227) [0.527]	-0.086 (0.067) [0.477]	0.013 (0.009) [0.285]	0.146 (0.311) [0.701]
Governor-President (GP) Aligned	0.050*** (0.018) [0.032]	-0.005 (0.006) [0.406]	0.003 (0.285) [0.999]	0.039*** (0.013) [0.006]	-0.005 (0.005) [0.375]	-0.106 (0.219) [0.684]
Battles x GP Aligned	0.033 (0.034) [0.509]	-0.0004 (0.003) [0.889]	0.249 (0.259) [0.523]	0.081 (0.068) [0.484]	-0.007 (0.010) [0.581]	-0.123 (0.425) [0.825]
Mean of outcome	22.488	24.098	22.727	22.488	24.098	22.727
Observations	283	283	116	283	283	116
Clusters	36	36	36	36	36	36
Panel C: All Conflict Events and State Revenue Outcomes						
Covariate Measure:	All (Continuous)			All (Indicator)		
Outcome:	VAT	Allocation	IGR	VAT	Allocation	IGR
	(1)	(2)	(3)	(4)	(5)	(6)
All Events	-0.034 (0.029) [0.523]	0.003 (0.002) [0.336]	-0.230 (0.173) [0.557]	-0.036* (0.019) [0.102]	0.007 (0.005) [0.223]	0.185 (0.127) [0.231]
Governor-President (GP) Aligned	0.040*** (0.013) [0.053]	-0.001 (0.005) [0.823]	0.049 (0.246) [0.852]	0.019** (0.008) [0.044]	-0.0001 (0.005) [0.992]	-0.047 (0.197) [0.841]
All Events x GP Aligned	0.046 (0.032) [0.523]	-0.002 (0.004) [0.605]	0.273 (0.197) [0.435]	0.073** (0.034) [0.083]	-0.003 (0.007) [0.686]	-0.160 (0.254) [0.586]
Mean of outcome	22.488	24.098	22.727	22.488	24.098	22.727
Observations	352	352	131	352	352	131
Clusters	36	36	36	36	36	36
District FE	Yes	Yes	Yes	Yes	Yes	Yes
Year FE	Yes	Yes	Yes	Yes	Yes	Yes

Notes: Regressions estimated by OLS. Robust standard errors in parentheses clustered by district. Districts are administrative states in Nigeria. Wild cluster bootstrap (by district) p-values are in brackets. Dependent variables are intergovernmental transfers: log real VAT and state allocations, and log real internally generated revenue (IGR) at the state level as described in text. Protest is the continuous z-score measure of protests from the ACLED data in columns (1) to (3) and the indicator that equals one if the z-score is greater than 0 in columns (4) to (6) as described in text. Battles and All Conflicts are defined similarly relative to the z-score. ***Significant at the 1 percent level, **Significant at the 5 percent level, *Significant at the 10 percent level.

Table 4: Instrument validity and falsification tests: Links between protest, other events and ethnolinguistic similarity interacted with negative economic shocks instrument

Panel A: Democratic Period				
Outcome:	Protest		Battles	
	Continuous (1)	Indicator (2)	Continuous (3)	Indicator (4)
Ethnolinguistic Similarity x Negative Shock Year	2.963*** (0.594) [0.000]	1.262*** (0.413) [0.003]	-3.710 (2.518) [0.377]	-0.826** (0.383) [0.064]
Mean of outcome	-0.045	0.310	0.073	0.258
<i>Observations</i>	352	352	283	283
<i>Clusters</i>	36	36	36	36
Panel B: Military Period				
Outcome:	Protest		Battles	
	Continuous (1)	Indicator (2)	Continuous (3)	Indicator (4)
Ethnolinguistic Similarity x Negative Shock Year	0.265 (0.542) [0.634]	0.369 (0.331) [0.269]	-2.055*** (0.552) [0.000]	-1.184*** (0.314) [0.000]
Mean of outcome	0.009	0.144	0.003	0.233
<i>Observations</i>	264	264	326	326
<i>Clusters</i>	37	37	37	37
District FE	Yes	Yes	Yes	Yes
Year FE	Yes	Yes	Yes	Yes

Notes: Regressions estimated by OLS. Robust standard errors in parentheses clustered by district. Districts are administrative states in Nigeria. Wild cluster bootstrap (by district) p-values are in brackets. Dependent variables are Protest and Battles, with both described as the continuous z-score measure in columns (1) to (3) and the indicator that equals one if the z-score is greater than 0 in columns (2) to (4) as described in text. ***Significant at the 1 percent level, **Significant at the 5 percent level, *Significant at the 10 percent level.

Table 5: IV estimates of the effect of protests on intergovernmental transfers using the ethnolinguistic similarity interacted with negative economic shocks instrument, and comparison OLS estimates, democratic period

Panel A: First-Stage Estimates				
Outcome:	Protest (Continuous)			
	(1)	(2)	(3)	(4)
Ethnolinguistic Similarity x Negative Shock Year	2.963*** (0.653)	2.880*** (0.752)	2.963*** (0.653)	2.880*** (0.752)
F-Stat of Excluded Instrument	20.61	14.65	20.61	14.65
Governor-President (GP) Aligned	No	Yes	No	Yes
Mean of outcome	-0.045	-0.045	-0.045	-0.045
<i>Observations</i>	352	352	352	352
<i>Clusters</i>	36	36	36	36
Panel B: Second-Stage 2SLS Estimates				
Outcome:	VAT		Allocation	
	(1)	(2)	(3)	(4)
Protest	-0.014 (0.012)	0.003 (0.014)	-0.021*** (0.007)	-0.024*** (0.007)
Governor-President (GP) Aligned	No	Yes	No	Yes
Mean of outcome	22.488	22.488	24.098	24.098
<i>Observations</i>	352	352	352	352
<i>Clusters</i>	36	36	36	36
Panel C: OLS Estimates				
Outcome:	VAT		Allocation	
	(1)	(2)	(3)	(4)
Protest	0.007* (0.004)	0.009** (0.004)	-0.005*** (0.002)	-0.005*** (0.002)
Governor-President (GP) Aligned	No	Yes	No	Yes
Mean of outcome	22.488	22.488	24.098	24.098
<i>Observations</i>	352	352	352	352
<i>Clusters</i>	36	36	36	36
District FE	Yes	Yes	Yes	Yes
Year FE	Yes	Yes	Yes	Yes

Notes: Robust standard errors in parentheses clustered by district. Districts are administrative states in Nigeria. District and year fixed effects are included in all regressions. Dependent variable in Panel A is Protest. Protest is the continuous z-score measure of protests from the ACLED data as described in text. Ethnolinguistic Similarity x Negative Shock Year is the interacted instrument which interacts the degree of ethnolinguistic similarity at the state level with the share of states experiencing negative economic shocks in a year as defined in the text. Dependent variables in Panel B and Panel C are intergovernmental transfers: log real VAT and state allocations at the state level. ***Significant at the 1 percent level, **Significant at the 5 percent level, *Significant at the 10 percent level.

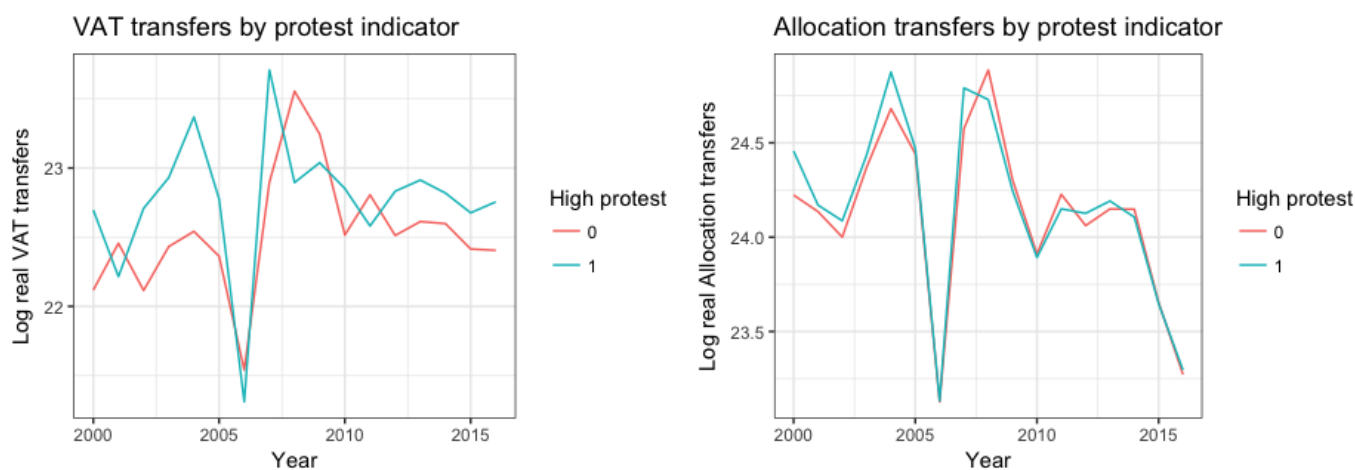


Figure 7: Average VAT and Allocation transfers by protest intensity (indicator). Higher variance in VAT transfers than allocation transfers in relatively high vs low protest areas

Table 6: Reduced form estimates for the ethnolinguistic similarity interacted with negative economic shock year instrument and intergovernmental transfers, democratic period

Outcome:	VAT			Allocation		
	(1)	(2)	(3)	(4)	(5)	(6)
Ethnolinguistic Similarity x Negative Shock Year (ESN)	-0.050 (0.034) [0.150]	-0.027 (0.035) [0.438]	-0.032 (0.038) [0.403]	-0.045** (0.022) [0.054]	-0.047** (0.022) [0.031]	-0.030 (0.023) [0.205]
Governor-President (GP) Aligned		0.020** (0.010) [0.043]	0.021* (0.013) [0.098]		-0.001 (0.005) [0.765]	-0.004 (0.006) [0.492]
ESN x GP Aligned			0.006 (0.041) [0.870]			-0.024 (0.017) [0.160]
Mean of outcome	22.488	22.488	22.488	24.098	24.098	24.098
Observations	612	612	612	612	612	612
Clusters	36	36	36	36	36	36
District FE	Yes	Yes	Yes	Yes	Yes	Yes
Year FE	Yes	Yes	Yes	Yes	Yes	Yes

Notes: Regressions estimated by OLS. Robust standard errors in parentheses clustered by district. Districts are administrative states in Nigeria. Wild cluster bootstrap (by district) p-values are in brackets. Dependent variables are intergovernmental transfers: log real VAT and state allocations at the state level as described in text. Protest is the continuous z-score measure of protests from the ACLED data as described in text. ***Significant at the 1 percent level, **Significant at the 5 percent level, *Significant at the 10 percent level.

Table 7: OLS Estimates: Protest and policing, share of other major actors in events, democratic period

Panel A: Protest Events Sample						
Outcome:	Police Share		Military Share		Party Share	
	(1)	(2)	(3)	(4)	(5)	(6)
Protest	0.026** (0.012) [0.080]	0.049*** (0.013) [0.000]	-0.002 (0.009) [0.813]	-0.005 (0.012) [0.662]	0.014* (0.008) [0.156]	0.024** (0.012) [0.222]
Governor-President (GP) Aligned		-0.026 (0.027) [0.368]		-0.001 (0.015) [0.953]		-0.019 (0.017) [0.332]
Protest x GP Aligned		-0.046** (0.018) [0.000]		0.005 (0.009) [0.629]		-0.021 (0.013) [0.180]
Mean of outcome	0.151	0.151	0.026	0.026	0.074	0.074
<i>Observations</i>	352	352	352	352	352	352
<i>Clusters</i>	36	36	36	36	36	36
Panel B: Battles Events Sample						
Outcome:	Police Share		Military Share		Party Share	
	(1)	(2)	(3)	(4)	(5)	(6)
Battles	-0.027 (0.019) [0.391]	-0.005 (0.031) [0.871]	0.066*** (0.021) [0.073]	0.052** (0.024) [0.284]	-0.043*** (0.012) [0.000]	-0.048*** (0.013) [0.000]
Governor-President (GP) Aligned		0.054 (0.043) [0.252]		0.063* (0.037) [0.089]		-0.084* (0.050) [0.139]
Battles x GP Aligned		-0.040* (0.024) [0.128]		0.017 (0.022) [0.530]		0.016 (0.015) [0.273]
Mean of outcome	0.348	0.348	0.216	0.216	0.132	0.132
<i>Observations</i>	283	283	283	283	283	283
<i>Clusters</i>	36	36	36	36	36	36
District FE	Yes	Yes	Yes	Yes	Yes	Yes
Year FE	Yes	Yes	Yes	Yes	Yes	Yes

Notes: Regressions estimated by OLS. Robust standard errors in parentheses clustered by district. Districts are administrative states in Nigeria. Wild cluster bootstrap (by district) p-values are in brackets. Dependent variables are shares of police, military or political party actors in all protest events and in all battles events in each state in Panel A and Panel B respectively over 2000 to 2016 years of available data as described in text. Protest is the continuous z-score measure of protests from the ACLED data as described in text. Battles are defined similarly relative to the z-score. ***Significant at the 1 percent level, **Significant at the 5 percent level, *Significant at the 10 percent level.

Table 8: OLS Estimates: Protest and state recurrent and capital expenditures

Panel A: Protest and State Expenditure, Military Period				
Covariate Measure:	Protest (Continuous)		Protest (Indicator)	
Outcome:	Recurrent	CapEx	Recurrent	CapEx
	(1)	(2)	(3)	(4)
Protest	-0.050*** (0.019) [0.015]	0.032 (0.058) [0.620]	-0.161*** (0.046) [0.000]	0.019 (0.222) [0.930]
Mean of outcome	9.929	9.160	9.929	9.160
<i>Observations</i>	88	88	88	88
<i>Clusters</i>	34	34	34	34
Panel B: Protest and State Expenditure, Democratic Period				
Covariate Measure:	Protest (Continuous)		Protest (Indicator)	
Outcome:	Recurrent	CapEx	Recurrent	CapEx
	(1)	(2)	(3)	(4)
Protest	-0.023 (0.028) [0.446]	-0.102 (0.372) [0.721]	-0.107* (0.057) [0.077]	-0.038 (0.983) [0.932]
Mean of outcome	24.416	23.635	24.416	23.635
<i>Observations</i>	131	131	131	131
<i>Clusters</i>	36	36	36	36
Panel C: Protest and State Expenditure, Democratic Period [by GP Aligned]				
Covariate Measure:	Protest (Continuous)		Protest (Indicator)	
Outcome:	Recurrent	CapEx	Recurrent	CapEx
	(1)	(2)	(3)	(4)
Protest	0.002 (0.020) [0.892]	-0.742 (0.765) [0.435]	-0.067 (0.071) [0.381]	-1.770 (2.123) [0.709]
Governor-President (GP) Aligned	-0.094 (0.101) [0.399]	1.344 (1.232) [0.430]	-0.074 (0.088) [0.462]	-0.143 (0.545) [0.759]
Protest x GP Aligned	-0.056 (0.105) [0.390]	1.383 (2.727) [0.352]	-0.087 (0.105) [0.452]	3.044 (2.727) [0.397]
Mean of outcome	24.416	23.635	24.416	23.635
<i>Observations</i>	131	131	131	131
<i>Clusters</i>	36	36	36	36
District FE	Yes	Yes	Yes	Yes
Year FE	Yes	Yes	Yes	Yes

Notes: Regressions estimated by OLS. Robust standard errors in parentheses clustered by district. Districts are administrative states in Nigeria. Wild cluster bootstrap (by district) p-values are in brackets. Dependent variables are expenditures, namely recurrent expenditures and capital expenditures (CapEx) at the state level as described in text. Protest is the continuous z-score measure of protests in columns (1) to (2) and the indicator that equals one if the z-score is greater than 0 in columns (3) to (4) as described in text. ***Significant at the 1 percent level, **Significant at the 5 percent level, *Significant at the 10 percent level.

References

- Acemoglu, Daron, Tarek A Hassan, and Ahmed Tahoun. 2018. "The power of the street: Evidence from Egypt's Arab Spring." *The Review of Financial Studies* 31 (1): 1–42.
- Adeloye, Davies, Rotimi Adedeji David, Adenike Ayobola Olaogun, Asa Auta, Adedapo Adesokan, Muktar Gadanya, Jacob Kehinde Opele, Oluwafemi Owagbemi, and Alexander Iseolorunkanmi. 2017. "Health workforce and governance: the crisis in Nigeria." *Human resources for health* 15 (1): 1–8.
- Akanle, Olayinka, Kudus Adebayo, and Olorunlana Adetayo. 2014. "Fuel subsidy in Nigeria: contexts of governance and social protest." *International Journal of Sociology and Social Policy* .
- Akuul, Timbee. 2011. "The role of the Nigerian Police Force in maintaining peace and security in Nigeria." *Journal of Social Science and Public Policy* 3 (7): 16–23.
- Alm, James, Betty R Jackson, and Michael McKee. 1992. "Estimating the determinants of taxpayer compliance with experimental data." *National Tax Journal* pp. 107–114.
- Alm, James, and Jameson Boex. 2008. "The role of economic versus political factors in the incidence of intergovernmental transfers in Nigeria." *The Journal of Developing Areas* pp. 1–19.
- Andreoni, James, Brian Erard, and Jonathan Feinstein. 1998. "Tax compliance." *Journal of economic literature* 36 (2): 818–860.
- Angrist, Joshua D, and Alan B Krueger. 2001. "Instrumental variables and the search for identification: From supply and demand to natural experiments." *Journal of Economic perspectives* 15 (4): 69–85.

- Archibong, Belinda. 2019. "Explaining divergence in the long-term effects of precolonial centralization on access to public infrastructure services in Nigeria." *World Development* 121: 123–140.
- Archibong, Belinda, Brahim S Coulibaly, and Ngozi Okonjo-Iweala. 2021. "Washington consensus reforms and lessons for economic performance in Sub-Saharan Africa." *Journal of Economic Perspectives* 35 (3): 133–156.
- Archibong, Belinda, and Nonso Obikili. 2020. "Prison labor: The price of prisons and the lasting effects of incarceration." *African Economic History Working Paper Series* (52).
- Asimiyu, Abiola G, Ehigiamusoe Uyi Kizito et al. 2014. "Analysis of internally generated revenue and its implications On fiscal viability of State Governments in Nigeria." *Journal of empirical economics* 2 (4): 216–228.
- Azeez, Ademola. 2009. "Ethnicity, Party Politics and Democracy in Nigeria: Peoples Democratic Party (PDP) as Agent of Consolidation?" *Studies of Tribes and Tribals* 7 (1): 1–9.
- Banful, Afua Branoah. 2011. "Do formula-based intergovernmental transfer mechanisms eliminate politically motivated targeting? Evidence from Ghana." *Journal of Development Economics* 96 (2): 380–390.
- Battaglini, Marco. 2017. "Public protests and policy making." *The Quarterly Journal of Economics* 132 (1): 485–549.
- Bellemare, Marc F. 2015. "Rising food prices, food price volatility, and social unrest." *American Journal of Agricultural Economics* 97 (1): 1–21.
- Boadway, Robin W, and Anwar Shah. 2007. *Intergovernmental fiscal transfers: principles and practices*. World Bank Publications.

- Branch, Adam, and Zachariah Mampilly. 2015. *Africa uprising: Popular protest and political change*. Zed Books Ltd.
- Bratton, Michael, and Nicolas Van de Walle. 1992. "Popular protest and political reform in Africa." *Comparative politics* pp. 419–442.
- Buchanan, James M. 1950. "Federalism and fiscal equity." *The American Economic Review* 40 (4): 583–599.
- Cantoni, Davide, David Y Yang, Noam Yuchtman, and Y Jane Zhang. 2019. "Protests as strategic games: experimental evidence from Hong Kong's antiauthoritarian movement." *The Quarterly Journal of Economics* 134 (2): 1021–1077.
- Casey, Katherine. 2015. "Crossing party lines: The effects of information on redistributive politics." *American Economic Review* 105 (8): 2410–48.
- Collins, William J, and Robert A Margo. 2007. "The economic aftermath of the 1960s riots in American cities: Evidence from property values." *The Journal of Economic History* 67 (4): 849–883.
- Cox, Gary W, and Mathew D McCubbins. 1986. "Electoral politics as a redistributive game." *The Journal of Politics* 48 (2): 370–389.
- Cullen, Julie Berry, Nicholas Turner, and Ebonya L Washington. 2019. "Political alignment, attitudes toward government and tax evasion." *Forthcoming in American Economic Journal: Economic Policy* .
- Ekpo, Akpan H. 1994. "Fiscal federalism: Nigeria's post-independence experience, 1960–90." *World Development* 22 (8): 1129–1146.
- El-Mallakh, Nelly. 2020. "How do protests affect electoral choices? Evidence from Egypt." *Journal of Economic Behavior & Organization* 179: 299–322.

- El-Mallakh, Nelly, Mathilde Maurel, and Biagio Speciale. 2018. "Arab spring protests and women's labor market outcomes: Evidence from the Egyptian revolution." *Journal of Comparative Economics* 46 (2): 656–682.
- Ellman, Matthew, and Leonard Wantchekon. 2000. "Electoral competition under the threat of political unrest." *The Quarterly journal of economics* 115 (2): 499–531.
- Enikolopov, Ruben, Alexey Makarin, and Maria Petrova. 2020. "Social media and protest participation: Evidence from Russia." *Econometrica* 88 (4): 1479–1514.
- Fiva, Jon H, and Askill H Halse. 2016. "Local favoritism in at-large proportional representation systems." *Journal of Public Economics* 143: 15–26.
- Frey, Bruno S, and Benno Torgler. 2007. "Tax morale and conditional cooperation." *Journal of comparative economics* 35 (1): 136–159.
- Frynas, Jędrzej George. 2001. "Corporate and state responses to anti-oil protests in the Niger Delta." *African Affairs* 100 (398): 27–54.
- Gershman, Boris, and Diego Rivera. 2018. "Subnational diversity in Sub-Saharan Africa: Insights from a new dataset." *Journal of Development Economics* 133: 231–263.
- González, Felipe. 2020. "Collective action in networks: Evidence from the Chilean student movement." *Journal of Public Economics* 188: 104220.
- Hodler, Roland, and Paul A Raschky. 2014. "Regional favoritism." *The Quarterly Journal of Economics* 129 (2): 995–1033.
- Hollyer, James R, B Peter Rosendorff, and James Raymond Vreeland. 2015. "Transparency, protest, and autocratic instability." *American Political Science Review* pp. 764–784.

- Luttmer, Erzo FP, and Monica Singhal. 2014. "Tax morale." *Journal of Economic Perspectives* 28 (4): 149–68.
- Madestam, Andreas, Daniel Shoag, Stan Veuger, and David Yanagizawa-Drott. 2013. "Do political protests matter? evidence from the tea party movement." *The Quarterly Journal of Economics* 128 (4): 1633–1685.
- Manacorda, Marco, and Andrea Tesei. 2020. "Liberation technology: Mobile phones and political mobilization in Africa." *Econometrica* 88 (2): 533–567.
- Maystadt, Jean-François, and Muhammad-Kabir Salihu. 2019. "National or political cake? The political economy of intergovernmental transfers in Nigeria." *Journal of Economic Geography* 19 (5): 1119–1142.
- Mazumder, Soumyajit. 2018. "The persistent effect of US civil rights protests on political attitudes." *American Journal of Political Science* 62 (4): 922–935.
- McCulloch, NEIL, Tom Moerenhout, and Joonseok Yang. 2020. "Building a Social Contract? Understanding Tax Morale in Nigeria." *The Journal of Development Studies* pp. 1–18.
- Montalvo, José G, and Marta Reynal-Querol. 2005. "Ethnic polarization, potential conflict, and civil wars." *American economic review* 95 (3): 796–816.
- Musgrave, Richard A. 1997. "Devolution, grants, and fiscal competition." *Journal of Economic perspectives* 11 (4): 65–72.
- Nunn, Nathan, and Leonard Wantchekon. 2011. "The slave trade and the origins of mistrust in Africa." *American Economic Review* 101 (7): 3221–52.
- Oates, Wallace E. 1993. "Fiscal decentralization and economic development." *National tax journal* 46 (2): 237–243.

- Oates, Wallace E. 1999. "An essay on fiscal federalism." *Journal of economic literature* 37 (3): 1120–1149.
- Okauru, Ifueko Omoigui. 2012. *Comprehensive Tax History of Nigeria*. African Books Collective.
- Omotola, J Shola. 2009. "'Garrison' democracy in Nigeria: The 2007 general elections and the prospects of democratic consolidation." *Commonwealth & Comparative Politics* 47 (2): 194–220.
- Onuigbo, Richard Amaechi, and Eme Okechukwu Innocent. 2015. "State governors and revenue allocation formula in Nigeria: A case of the fourth republic." *International Journal of Accounting Research* 42 (2437): 1–23.
- Osaghae, Eghosa E. 1995. "The Ogoni uprising: oil politics, minority agitation and the future of the Nigerian state." *African affairs* 94 (376): 325–344.
- Owen, Olly, and Zainab Usman. 2015. "Briefing: Why Goodluck Jonathan lost the Nigerian presidential election of 2015." *African Affairs* 114 (456): 455–471.
- Poterba, James M. 1994. "State responses to fiscal crises: The effects of budgetary institutions and politics." *Journal of political Economy* 102 (4): 799–821.
- Raleigh, Clionadh, Andrew Linke, Håvard Hegre, and Joakim Karlsen. 2010. "Introducing ACLED: an armed conflict location and event dataset: special data feature." *Journal of peace research* 47 (5): 651–660.
- Salami, Adeleke. 2011. "Taxation, revenue allocation and fiscal federalism in Nigeria: Issues, challenges and policy options." *Economic annals* 56 (189): 27–50.
- Sender, John. 1999. "Africa's economic performance: limitations of the current consensus." *Journal of Economic Perspectives* 13 (3): 89–114.

- Shettima, Kole Ahmed. 1993. "Structural adjustment and the student movement in Nigeria." *Review of African Political Economy* 56.
- Sneyd, Lauren Q, Alexander Legwegoh, and Evan DG Fraser. 2013. "Food riots: Media perspectives on the causes of food protest in Africa." *Food security* 5 (4): 485–497.
- Ward, Michael D, Andreas Beger, Josh Cutler, Matthew Dickenson, Cassy Dorff, and Ben Radford. 2013. "Comparing GDELT and ICEWS event data." *Analysis* 21 (1): 267–297.
- Xie, Hua, Liangzhi You, and Hiroyuki Takeshima. 2017. "Invest in small-scale irrigated agriculture: A national assessment on potential to expand small-scale irrigation in Nigeria." *Agricultural Water Management* 193: 251–264.
- Zantman, Wilfried. 2002. "Constitutional design and regional favoritism." *Journal of Public Economic Theory* 4 (1): 71–93.
- Zhuravskaya, Ekaterina V. 2000. "Incentives to provide local public goods: fiscal federalism, Russian style." *Journal of public economics* 76 (3): 337–368.

A Appendix (For Online Publication)

Contents

1	Introduction	2
2	Fiscal Redistribution and Protests in Nigeria	8
2.1	Intergovernmental Transfers Under Military and Democratic Rule	8
2.2	Protests and Government Responses	12
2.2.1	Military Rule	12
2.2.2	Democratic Period	13
3	Conceptual Framework	14
4	Description of Data	17
4.1	Public Finance	17
4.2	Protests	19
4.3	Political Parties	21
5	Protests and Fiscal Redistribution	22
5.1	Protests and Intergovernmental Transfers	22
5.1.1	Mechanisms: The Role of Political Alignment	23
5.2	OLS Estimates	24
5.3	Instrumental Variable Estimates	26
5.4	Other Falsification Tests	31
6	Examining Policing and State Expenditure Outcomes	32
6.1	Policing	32
6.2	State Expenditure	34

7 Conclusion	35
---------------------	-----------

A Appendix (For Online Publication)	55
--	-----------

A.1 Data Appendix	60
A.1.1 Data and Variable Descriptions	60
A.2 Further Detail on Protests in Nigeria	64
A.3 Party Politics in Nigeria	68
A.4 Robustness	71
A.5 IV Estimates	73
A.6 Protests and Labor Unions	78
A.7 Intergovernmental Transfers, Public Service Provision and Tax Morale Outcomes	79

List of Figures

1 Google trends search interest ranking scores for ‘allocation’ and ‘VAT’ terms in Nigeria, 2011-2021	37
2 Example of archival data (1990) on public finance from the 1997 Annual Abstract of Statistics	37
3 Share of intergovernmental transfers (VAT and Allocation) in total revenues in military (1988-1996) and democratic (2000-2016) periods	38
4 Share of internally generated revenue (IGR) in total revenues in military (1988-1996) and democratic (2000-2016) periods	38
5 Mean protest and battles (indicator measure) in military period (1979-1999) and democratic period (2000-2016)	39
6 Likelihood of governor-president (GP) party alignment in the democratic period	39

7	Average VAT and Allocation transfers by protest intensity (indicator). Higher variance in VAT transfers than allocation transfers in relatively high vs low protest areas	45
A1	Countries with Natural Resource Revenue-Sharing Arrangements. Source: UNDP, 2016	61
A2	Headlines from the ‘decade of protests’	61
A3	Nigeria with 6 geopolitical (ethnic region proxy) zones colored, LGAs outlined and state names labeled	62
A4	Figure showing larger and smaller variance in VAT transfers and Allocation transfers respectively, disbursed in relatively high versus low protest areas, military period	64
A5	New York Times article on “Economic Riots” in Nigeria (1989)	66
A6	News headlines from the 2000s: Workers protest over unpaid salaries in Nigeria	67
A7	Share of state governors from registered political parties, 2000-2016	69
A8	Share of state governors from PDP versus other opposition parties (APC) by state, 2000-2016	70
A9	OLS Estimates: Protest, by president-governor alignment, and intergovernmental transfers (VAT, Allocation) in military and democratic periods	71
A10	Share of households that own a mobile phone, 2008-2015. Source: Demographic and Health Surveys (DHS)	77

List of Tables

1	OLS Estimates: Protest, other events and intergovernmental transfers (VAT, Allocation) and internally generated revenue (IGR), military period	40
2	OLS Estimates: Protest, other events and intergovernmental transfers (VAT, Allocation) and internally generated revenue (IGR), democratic period	41

3	OLS Estimates: Protest, other events and intergovernmental transfers (VAT, Allocation) and internally generated revenue (IGR), democratic period by GP Aligned status	42
4	Instrument validity and falsification tests: Links between protest, other events and ethnolinguistic similarity interacted with negative economic shocks instrument	43
5	IV estimates of the effect of protests on intergovernmental transfers using the ethnolinguistic similarity interacted with negative economic shocks instrument, and comparison OLS estimates, democratic period	44
6	Reduced form estimates for the ethnolinguistic similarity interacted with negative economic shock year instrument and intergovernmental transfers, democratic period	45
7	OLS Estimates: Protest and policing, share of other major actors in events, democratic period	46
8	OLS Estimates: Protest and state recurrent and capital expenditures	47
A1	Google trends top related search query terms to ‘allocation’ and ‘vat’ in Nigeria, 2011-2016	62
A2	Summary Statistics	63
A3	Distribution of state governor and president parties, 2000-2016	69
A4	Balance on geographic and institutional characteristics	72
A5	Petroleum prices and protest	73
A6	Instrument validity and falsification test: Ethnolinguistic similarity interacted with negative shock year instrument and protest by mobile phone coverage, democratic period	74
A7	Falsification test: Ethnolinguistic similarity interacted with negative shock year instrument and battles by mobile phone coverage, democratic period	75

A8	First and second stage for interacted instrument and GP Aligned interaction term, democratic period	76
A9	Protest, battles and share of labor union actors, democratic period	78
A10	Summary Statistics of 2018 Tax Morale Respondents	81
A11	Correlations between public service provision and tax morale in 2018	82
A12	OLS Estimates: Relationship between historic revenue shares in total state revenues and perceptions of quality of present-day public service provision	83
A13	OLS Estimates: Relationship between historic revenue shares in total state revenues and and tax morale	84

A.1 Data Appendix

A.1.1 Data and Variable Descriptions

- Protest data from the military period is from the Global Data on Events, Location and Tone (GDELT) database, which codes content events from newspapers over the 1979-1999 military period. The dataset can be found online here: <https://www.gdeltproject.org/>. It includes a classification for protests/riots, along with other event root codes like “fights” or armed battles and “provide aid”, among others. Protest are explicitly coded protest/riot events, while battle events are explicitly coded as previously mentioned. Protest data from the democratic period comes from the Armed Conflict Location and Event Data (ACLED) project, which codes conflict events from newspaper reports starting in 1997 but not before. The latest version of the ACLED 2016 dataset code can be found online here: <https://acleddata.com>. It includes a classification for Protests and Riots combined in a single category here for comparability with the GDELT data. It also includes a category for “Violence against Civilians” and “Battles”. Summary statistics are provided in Table A2.
- Public finance and prison data from the military period with complete data from 1988 to 1996 were digitized from the Nigerian Annual Abstract of Statistics as shown in Figure 2. The data from the democratic period from 2000-2016 were digitized from the Annual Abstract of Statistics and the Nigerian National Bureau of Statistics website here: <https://nigerianstat.gov.ng/elibrary>. Night Light Density data are from the National Oceanic and Atmospheric Administration (NOAA) database. Summary statistics are provided in Table A2.
- Data on mobile phone ownership comes from the nationally representative Demographic and Health Surveys (DHS) from 4 rounds in 2008, 2010, 2013, 2015, the

years of available mobile phone ownership data. Data comes from the individual level ‘PR’ recode DHS dataset which records one record for every household member: <https://dhsprogram.com/data/>.

- Data on police, military and political party actors participation in protest and battles events comes from the ACLED dataset.

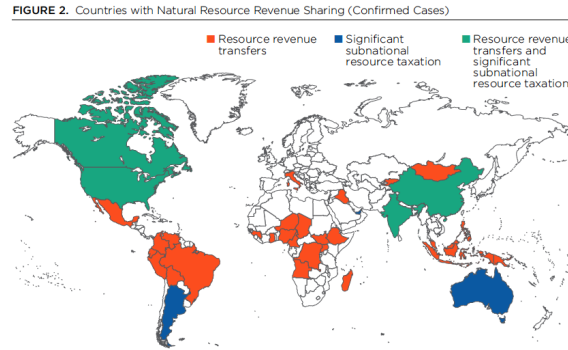


Figure A1: Countries with Natural Resource Revenue-Sharing Arrangements. Source: UNDP, 2016

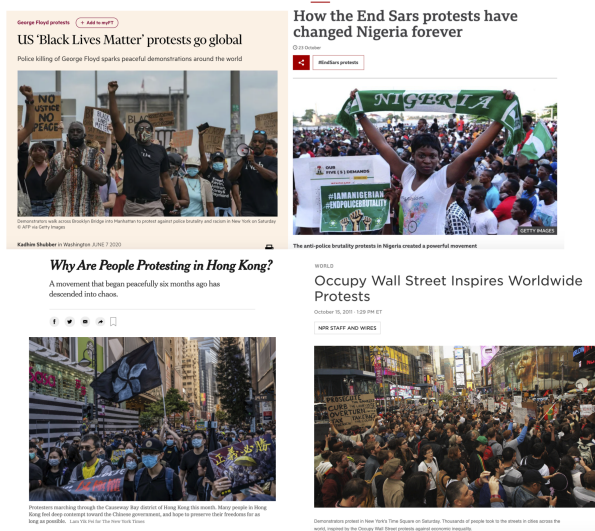


Figure A2: Headlines from the ‘decade of protests’

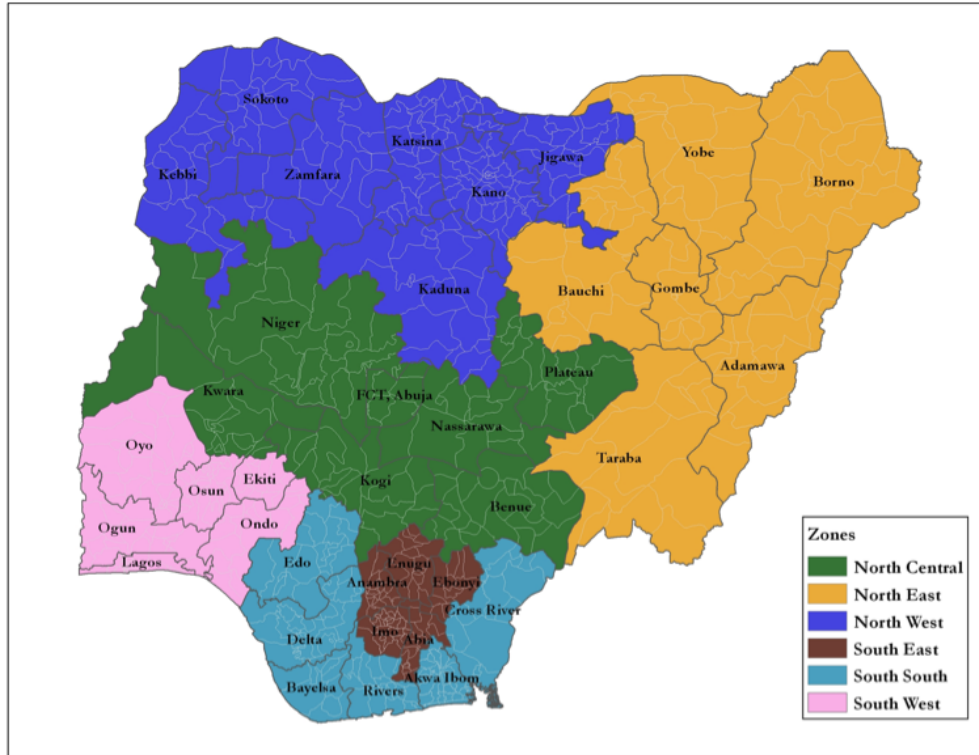


Figure A3: Nigeria with 6 geopolitical (ethnic region proxy) zones colored, LGAs outlined and state names labeled

Table A1: Google trends top related search query terms to ‘allocation’ and ‘vat’ in Nigeria, 2011-2016

Allocation	
Top 5 allocation related Google queries, February, 2011 to December, 2021	
Query	Ranking
revenue allocation	100
federal allocation	78
revenue allocation in nigeria	51
faac allocation	42
faac	36
VAT	
Top 5 VAT related Google queries, February, 2011 to December, 2021	
Query	Ranking
nigeria vat	100
vat in nigeria	85
what is vat	28
vat number	18
vat meaning	15

Table A2: Summary Statistics

Statistic	N	Mean	St. Dev.	Min	Max
Public Finance and Protest, Military Period					
VAT	130	8.073	0.834	6.148	10.723
Allocation	274	9.909	0.665	7.631	11.292
IGR	217	8.197	1.295	2.119	12.098
Recurrent Expenditure	220	9.908	0.900	6.157	12.219
Capital Expenditure	220	9.213	1.003	6.136	12.471
VAT Share	116	0.141	0.032	0.041	0.213
Allocation Share	116	0.645	0.142	0.131	0.850
IGR Share	116	0.214	0.143	0.003	0.748
Recurrent Expenditure Share	220	0.647	0.171	0.128	0.959
Capital Expenditure Share	220	0.353	0.171	0.041	0.872
Protest, Continuous	264	0.009	0.987	-0.402	5.386
Protest, Indicator	264	0.144	0.352	0	1
Battles, Continuous	326	0.003	0.973	-0.873	5.495
Battles, Indicator	326	0.233	0.423	0	1
Ethnolinguistic Similarity x Negative Shock Year	335	-0.130	0.132	-0.649	-0.001
Public Finance and Protest, Democratic Period					
VAT	612	22.488	0.535	20.998	25.053
Allocation	612	24.098	0.447	22.812	25.078
IGR	180	22.727	1.002	20.639	26.371
Recurrent Expenditure	180	24.416	0.597	23.030	26.200
Capital Expenditure	180	23.635	3.679	0.000	26.510
VAT Share	180	0.157	0.027	0.077	0.248
Allocation Share	180	0.646	0.136	0.118	0.805
IGR Share	180	0.197	0.144	0.023	0.736
Recurrent Expenditure Share	180	0.558	0.195	0.129	1.000
Capital Expenditure Share	180	0.442	0.195	0.000	0.871
Governor-President (GP) Aligned	612	0.690	0.463	0	1
Protest, Continuous	352	-0.045	0.918	-1.031	4.245
Protest, Indicator	352	0.310	0.463	0	1
Battles, Continuous	283	0.073	1.035	-0.766	5.598
Battles, Indicator	283	0.258	0.438	0	1
Ethnolinguistic Similarity x Negative Shock Year	612	-0.129	0.142	-0.707	-0.001

Notes: Protest, Continuous is a z-score representing standard deviations from the national mean. Protest, Indicator is an indicator that equals one if the z-score is greater than 0. All public finance values are logs of real values relative to 2010. IGR is internally generated revenue and VAT are transfers from the Value Added Tax revenue. Revenue shares are divided by total revenue, and expenditure shares are divided by total expenditure.

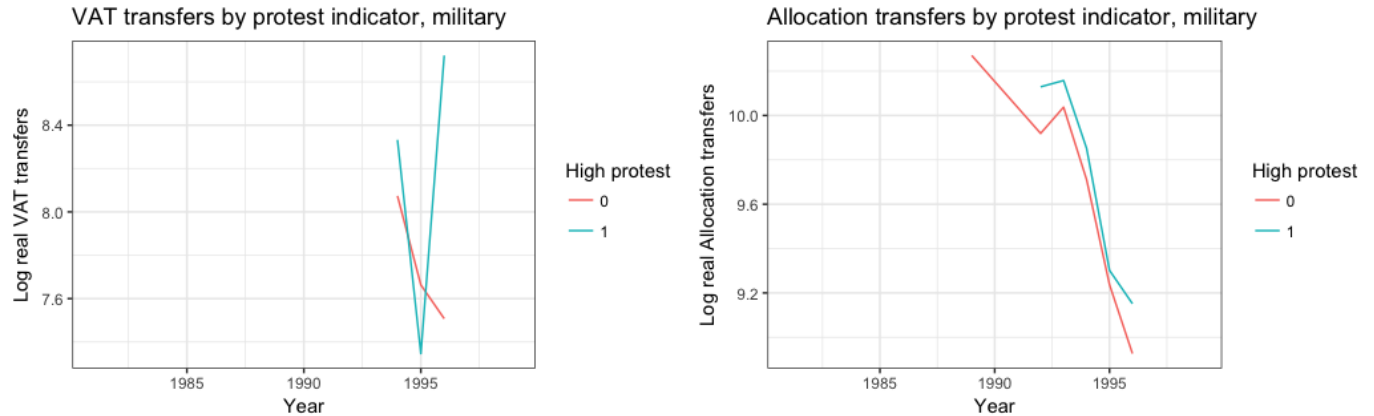


Figure A4: Figure showing larger and smaller variance in VAT transfers and Allocation transfers respectively, disbursed in relatively high versus low protest areas, military period

A.2 Further Detail on Protests in Nigeria

Another example of protests in Nigeria comes from the anti-oil protests in Nigeria’s southern Niger Delta region. The anti-oil protests in the Niger Delta were driven by residents in Nigeria’s southern oil producing region, who protested the environmental damage caused by oil production, including uncompensated oil spills and damage to farming and fishery, the primary livelihood of residents in the region from operating companies like Royal Dutch Shell (Frynas, 2001; Osaghae, 1995). The protests were ongoing for many years, with the most famous instance being the anti-Shell protests led by the Movement for the Survival of the Ogoni People (MOSOP) and culminating in the infamous execution of the movement’s leader, Ken Saro-Wiwa, by then military head of state Sani Abacha, to much international outcry in 1995 (Frynas, 2001). The protests led to a number of concessions from the federal government, like the creation of an Oil Mineral Producing Areas Development Commission (OMPADEC) that allocated 1.5% to 3% of government revenue to these regions. It also led to the introduction of the 13% derivation to oil producing areas rule in the 1999 constitution. The protests were also followed by repressive tactics from military governments, including killings, arrests and floggings of protesters (Osaghae, 1995). Protests continue in this region

till the present, with state residents demanding an increase in transfers and ownership rights from the federal government for exploitation of oil resources in their region (Frynas, 2001).

Sixteen states account for all of the high intensity protests in the military period, while 24 states account for 65% of this sample in the democratic period. 31% of high intensity protests in the military period were in the Niger Delta region, and 13% of protest in the SAP protests region in southwestern Nigeria following the historical account in Section 2³². In the democratic period, 33% of high intensity protests were in the Niger Delta region, 33% were in states where the likelihood of the president and state governor being from the same party was relatively low, following accounts of opposition party led protests described in Section 2. Altogether, the Niger Delta and opposition party states account for 66% of the high intensity protests in the democratic period³³.

³²The Niger Delta states include Delta, Rivers, Bayelsa, Edo and Ondo. The SAP protests were concentrated in Lagos, Ogun and Osun states.

³³The Niger Delta states include Delta, Edo, Rivers, Bayelsa, Imo Ondo, Akwa-Ibom and Abia. The opposition party states include Ekiti, Lagos, Osun, Ogun, Oyo, Kware, Kogi and Borno.

Economic Riots Are Spreading in Nigeria



By Kenneth B. Noble, Special To the New York Times

June 4, 1989



The New York Times Archives

See the article in its original context from
June 4, 1989, Section 1, Page 3 | [Buy Reprints](#)

[VIEW ON TIMESMACHINE](#)

TimesMachine is an exclusive benefit for home
delivery and digital subscribers.

About the Archive

This is a digitized version of an article from The Times's print archive, before the start of online publication in 1996. To preserve these articles as they originally appeared, The Times does not alter, edit or update them.

Occasionally the digitization process introduces transcription errors or other problems; we are continuing to work to improve these archived versions.

A strike in Nigeria over the Government's economic austerity program spread overnight to Port Harcourt, a city of a quarter-million people in the southeastern region, and at least three people were reported killed and several hundred arrested in new clashes

Figure A5: New York Times article on "Economic Riots" in Nigeria (1989)



Nigeria: unions stage national protest over labour crisis



Read this article in: [English](#) | [Español](#) | [Français](#) | [Русский](#) | [Add to favourites](#)

31 August, 2016 On 23 August 2016, Nigerian unions took part in a national protest against an escalating labour crisis caused by unpaid wages and the killing of workers.

Workers protest non-payment of over three years salaries in Cross River

Published on May 25, 2021
By Edem Edem



Figure A6: News headlines from the 2000s: Workers protest over unpaid salaries in Nigeria

A.3 Party Politics in Nigeria

Though political parties have a long history pre the 1999 democratic elections in Nigeria, only 3 of 9 existing parties (namely Alliance for Democracy (AD), the All People’s Party (APP), and the People’s Democratic Party (PDP)) were granted registration by the then military president Abdulsalami Abubakar in 1999 upon transition to democracy (Azeez, 2009). The PDP then dominated presidential elections for 15 years with 88% of presidents elected between 2000 and 2016 coming from PDP. Gubernatorial elections in Nigeria are usually very localized events, with citizens focused on regional issues, often along ethnic lines (Azeez, 2009). Ten parties have elected governors between 2010 and 2016 as shown in Table A3. Most governors over the democratic period have come from the main PDP party, with a drop-off after 2010 following the sudden death of then PDP party president Umaru Yar’Adua in 2010 as shown in Figure A7.

The president’s death and the appointment and subsequent election of his vice president, Goodluck Jonathan, the first president from the south-south ethnic region in Nigeria, was heavily contested, with many groups contesting the election of a president from the south-south ethnic region (Owen and Usman, 2015). Jonathan’s loss in the 2015 election was reportedly partly as a result of the backlash from his contravening the country’s unofficial “power-sharing” rule, an unofficial agreement to alternate power sharing between the northern and southern ethnic regions of the country, by running for re-election (Owen and Usman, 2015). Multiple opposition parties (ACN, ANPP, CPC and APGA) consolidated forces to form the APC party in 2013 ahead of the 2015 elections, and then president Jonathan lost the presidential elections in 2015 becoming the first incumbent to lose re-election in Nigeria’s democratic history, and changing the balance of power among parties of elected state governors as well to majority APC as shown in Figure A7 (Owen and Usman, 2015). Figure A8 shows the strong ethnoregional clustering of parties of elected state governors in Nigeria.

Table A3: Distribution of state governor and president parties, 2000-2016

State Governor Party	Share of Total
PDP	0.649
APC	0.118
ANPP	0.109
AD	0.036
ACN	0.029
APGA	0.021
APP	0.015
LP	0.013
PPA	0.007
CPC	0.003

President Party	Share of Total
PDP	0.882
APC	0.118

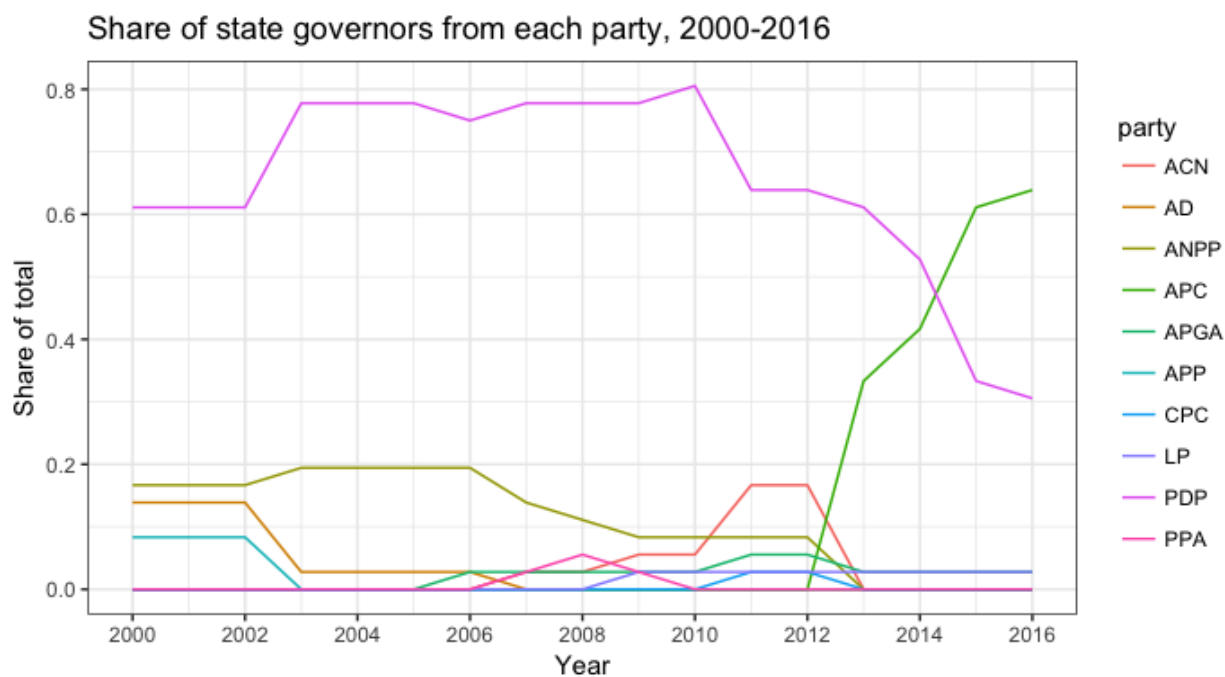


Figure A7: Share of state governors from registered political parties, 2000-2016

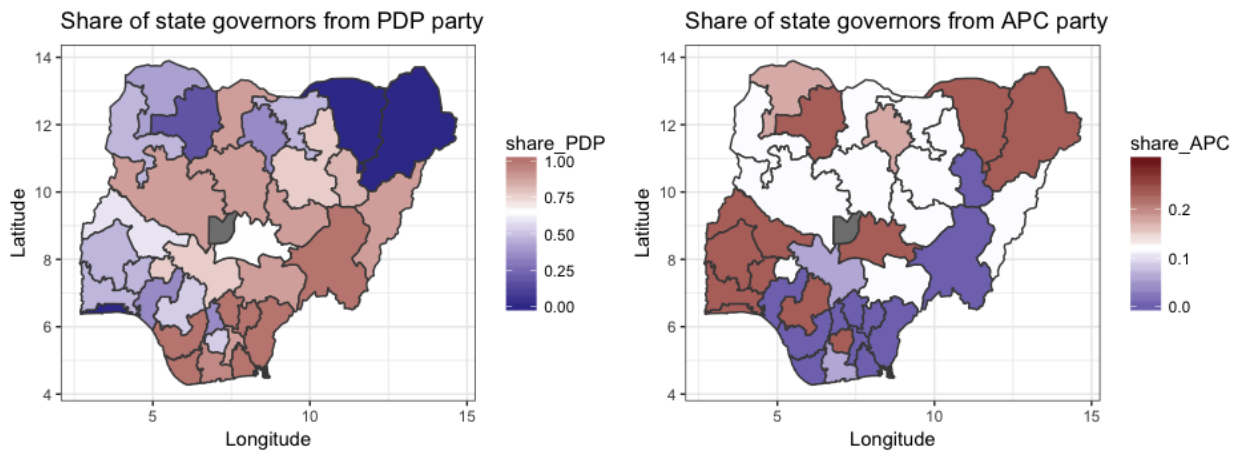


Figure A8: Share of state governors from PDP versus other opposition parties (APC) by state, 2000-2016

A.4 Robustness

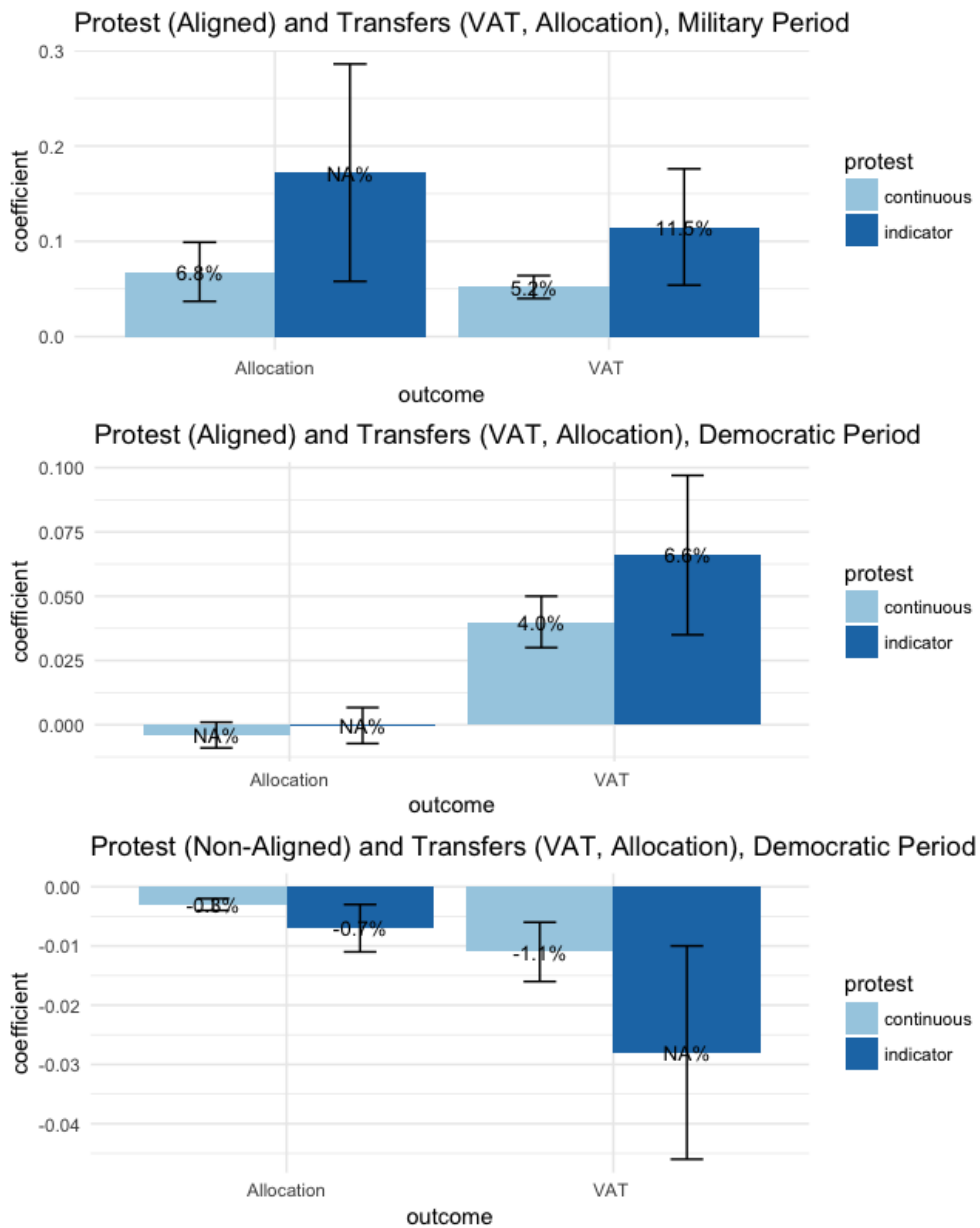


Figure A9: OLS Estimates: Protest, by president-governor alignment, and intergovernmental transfers (VAT, Allocation) in military and democratic periods

Table A4: Balance on geographic and institutional characteristics

Panel A: Protest Average and State Characteristics, Military Period									
	Geographic					Institutional			
	Petrol	Malaria	Suitability	Elevation	Dist. Coast	Dist. Capital	Slavery	Centralization	Pop. Density
	(1)	(2)	(3)	(4)	(5)	(6)	(7)	(8)	(9)
Protest (Indicator)	0.187 (0.170)	-0.021 (0.016)	-0.027 (0.405)	58.572 (201.084)	-92.216 (70.650)	-61.004 (126.718)	-212,050.000 (143,023.800)	-0.283 (0.442)	6,306.232 (3,981.926)
<i>Observations</i>	37	37	37	37	37	37	37	37	37
R ²	0.760	0.214	0.426	0.498	0.912	0.571	0.486	0.494	0.390
District FE	Yes	Yes	Yes	Yes	Yes	Yes	Yes	Yes	Yes
Panel B: Protest Average and State Characteristics, Democratic Period									
	Geographic					Institutional			
	Petrol	Malaria	Suitability	Elevation	Dist. Coast	Dist. Capital	Slavery	Centralization	Pop. Density
	(1)	(2)	(3)	(4)	(5)	(6)	(7)	(8)	(9)
Protest (Indicator)	0.242 (0.191)	-0.017 (0.015)	0.184 (0.234)	178.200 (148.655)	11.877 (78.899)	-53.644 (86.927)	-88,312.000 (54,802.190)	0.070 (0.406)	2,007.385 (1,473.340)
<i>Observations</i>	36	36	36	36	36	36	36	36	36
R ²	0.771	0.246	0.438	0.530	0.911	0.529	0.462	0.490	0.220
Zone FE	Yes	Yes	Yes	Yes	Yes	Yes	Yes	Yes	Yes

Notes: Regressions estimated by OLS. Robust standard errors in parentheses. Observations at the state level. Zone is geopolitical zone. 'Protest (Indicator)' is the likelihood that a state is a high intensity protest area, taking the long-run average of the Protest indicator over the military and democratic periods of study. Petrol is an indicator that equals 1 if the state has recorded deposits of petroleum from the PRIO dataset. Suitability is land suitability for agriculture from FAO data. Elevation is mean elevation in km from the Global Climate database. Dist. Coast and Dist. Capital are distance to sea coast and distance to capital respectively. Distance to capital and seacoast in km. Malaria stability is from the malaria ecology index from Kiszewski et al., (2004). Pop. Density is the average LGA population density in 2006. Access to River is an indicator for whether or not a state has a river running through it. Slavery is the total exports of slaves from the region during the Atlantic slave trade. Centralization index is the level of precolonial centralization from Murdock ethnicity data (Murdock, 1967) (following Archibong (2019)). ***Significant at the 1 percent level, **Significant at the 5 percent level, *Significant at the 10 percent level.

Table A5: Petroleum prices and protest

Sample: Outcome:	Military		Democratic	
	Protest (Continuous)	Protest (Indicator)	Protest (Continuous)	Protest (Indicator)
	(1)	(2)	(3)	(4)
Petrol x Petrol Price	0.572 (0.516) [0.305]	0.135 (0.157) [0.476]	-0.058 (0.139) [0.689]	0.024 (0.109) [0.839]
Mean of outcome	0.009	0.144	-0.018	0.308
<i>Observations</i>	264	264	352	352
<i>Clusters</i>	37	37	36	36
District FE	Yes	Yes	Yes	Yes
Year FE	Yes	Yes	Yes	Yes

Notes: Regressions estimated by OLS. Robust standard errors in parentheses clustered by district. Districts are administrative states in Nigeria. Wild cluster bootstrap (by district) p-values are in brackets. Dependent variables are protest variables. Protest Continuous is the continuous z-score measure of protests and Protest Indicator is measure that equals one if the z-score is greater than 0 as described in text. Petrol is an indicator that equals one if the state is a petroleum producing area. Petrol Price is the log real (US 1984 USD) oil price of petroleum for available data in the military period (1980-1999) and democratic period (2000-2016). ***Significant at the 1 percent level, **Significant at the 5 percent level, *Significant at the 10 percent level.

A.5 IV Estimates

Our instrument specification adapts the $ELF_{0.2}$ from Gershman and Rivera (2018). Our results are robust to using $ELF_{0.1}$ and $ELF_{0.3}$ instead to construct the interacted ethnolinguistic similarity instrument. We use available Demographic and Health Surveys (DHS) data on the share of households that own a mobile phone, as shown in Figure A10 to test hypotheses around the predictive power of the interacted instrument by mobile phone coverage in a state.

Table A6: Instrument validity and falsification test: Ethnolinguistic similarity interacted with negative shock year instrument and protest by mobile phone coverage, democratic period

Outcome:	Protest (Continuous)					
	(1)	(2)	(3)	(4)	(5)	(6)
Ethnolinguistic Similarity						
x Negative Shock Year (ESN)	3.838** (1.564)	0.180 (3.092)	-3.534 (5.032)	-6.737* (3.569)	-8.003* (4.213)	-0.988 (3.469)
Phone		-1.660 (1.375)				
Phone30			0.854 (0.691)			
Phone40				0.098 (0.423)		
Phone50					0.440 (0.312)	
Phone60						0.213 (0.279)
ESN x Phone		3.413 (2.487)				
ESN x Phone30			6.683 (4.211)			
ESN x Phone40				8.673*** (3.297)		
ESN x Phone50					9.433*** (3.582)	
ESN x Phone60						3.713 (2.783)
Mean of outcome	-0.065	-0.065	-0.065	-0.065	-0.065	-0.065
Observations	105	105	105	105	105	105
Clusters	36	36	36	36	36	36
District FE	Yes	Yes	Yes	Yes	Yes	Yes
Year FE	Yes	Yes	Yes	Yes	Yes	Yes

Notes: Regressions estimated by OLS. Robust standard errors in parentheses clustered by district. Districts are administrative states in Nigeria. Dependent variable is Protest, described as the continuous z-score measure as described in text. Phone is the average number of individuals that own a mobile phone in the state from 4 rounds of available DHS data in 2008, 2010, 2013 and 2015. PhoneX is an indicator that equals one if X% of individuals own a mobile phone, so, for example, Phone20 is an indicator that equals one if 20% of individuals own a mobile phone. ***Significant at the 1 percent level, **Significant at the 5 percent level, *Significant at the 10 percent level.

Table A7: Falsification test: Ethnolinguistic similarity interacted with negative shock year instrument and battles by mobile phone coverage, democratic period

Outcome:	Battles (Continuous)					
	(1)	(2)	(3)	(4)	(5)	(6)
Ethnolinguistic Similarity x Negative Shock Year (ESN)	0.253 (3.018)	6.563* (3.496)	23.707** (11.032)	18.412** (8.916)	14.867* (7.769)	11.047 (7.765)
Phone		1.740 (1.373)				
Phone30			-3.761 (2.812)			
Phone40				-1.451 (1.452)		
Phone50					-0.417 (0.815)	
Phone60						-0.074 (0.580)
ESN x Phone		-6.754* (3.661)				
ESN x Phone30			-22.043* (12.140)			
ESN x Phone40				-15.501* (8.215)		
ESN x Phone50					-11.812* (6.682)	
ESN x Phone60						-7.942 (6.058)
Mean of outcome	-0.027	-0.027	-0.027	-0.027	-0.027	-0.027
<i>Observations</i>	95	95	95	95	95	95
<i>Clusters</i>	36	36	36	36	36	36
District FE	Yes	Yes	Yes	Yes	Yes	Yes
Year FE	Yes	Yes	Yes	Yes	Yes	Yes

Notes: Regressions estimated by OLS. Robust standard errors in parentheses clustered by district. Districts are administrative states in Nigeria. Dependent variable is Battles, described as the continuous z-score measure as described in text. Phone is the average number of individuals that own a mobile phone in the state from 4 rounds of available DHS data in 2008, 2010, 2013 and 2015. PhoneX is an indicator that equals one if X% of individuals own a mobile phone, so, for example, Phone20 is an indicator that equals one if 20% of individuals own a mobile phone. ***Significant at the 1 percent level, **Significant at the 5 percent level, *Significant at the 10 percent level.

Table A8: First and second stage for interacted instrument and GP Aligned interaction term, democratic period

Panel A: First-Stage Estimates				
Outcome:	Protest (Continuous)			
	(1)	(2)	(3)	(4)
Ethnolinguistic Similarity x Negative Shock Year	2.963*** (0.653)	2.963*** (0.653)	2.235*** (0.613)	2.235*** (0.613)
F-Stat of Excluded Instrument	20.61	20.61	10.52	10.52
Governor-President (GP) Aligned	No	No	No	No
GP Aligned Interaction	No	No	No	No
GP Aligned Interaction Instrument	No	No	Yes	Yes
Mean of outcome	-0.045	-0.045	-0.045	-0.045
<i>Observations</i>	352	352	352	352
<i>Clusters</i>	36	36	36	36
Panel B: Second-Stage 2SLS Estimates				
Outcome:	VAT	Allocation	VAT	Allocation
	(1)	(2)	(3)	(4)
Protest	-0.014 (0.012)	-0.021*** (0.007)	0.100 (0.181)	-0.041 (0.036)
Protest x GP Aligned			-0.174 (0.266)	0.030 (0.055)
Mean of outcome	22.488	24.098	22.488	24.098
<i>Observations</i>	352	352	352	352
<i>Clusters</i>	36	36	36	36
District FE	Yes	Yes	Yes	Yes
Year FE	Yes	Yes	Yes	Yes

Notes: Robust standard errors in parentheses clustered by district. Districts are administrative states in Nigeria. District and year fixed effects are included in all regressions. Dependent variable in Panel A is Protest. Protest is the continuous z-score measure of protests from the ACLED data as described in text. Ethnolinguistic Similarity x Negative Shock Year is the interacted instrument which interacts the degree of ethnolinguistic similarity at the state level with the share of states experiencing negative economic shocks in a year as defined in the text. The GP Aligned Interaction Instrument interacts the previous instrument with the GP Aligned indicator to predict the first stage for the GP Aligned interaction in the regressions in column (3) and column (4). Dependent variables in Panel B and Panel C are intergovernmental transfers: log real VAT and state allocations at the state level. ***Significant at the 1 percent level, **Significant at the 5 percent level, *Significant at the 10 percent level.

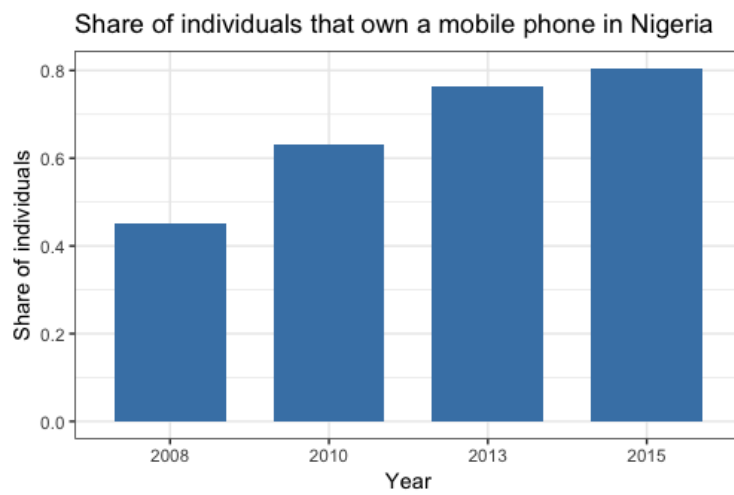


Figure A10: Share of households that own a mobile phone, 2008-2015. Source: Demographic and Health Surveys (DHS)

A.6 Protests and Labor Unions

Table A9: Protest, battles and share of labor union actors, democratic period

Outcome:	Labor Union Share					
	(1)	(2)	(3)	(4)	(5)	(6)
Protest	0.008*	0.009*	0.004			
	(0.005)	(0.005)	(0.004)			
Governor-President (GP) Aligned		0.022	0.023		-0.003	-0.003
		(0.014)	(0.014)		(0.022)	(0.022)
Protest x GP Aligned			0.010			
			(0.006)			
Battles				0.0002	0.0003	-0.0003
				(0.003)	(0.003)	(0.008)
Battles x GP Aligned						0.001
						(0.011)
Mean of outcome	0.032	0.032	0.032	0.018	0.018	0.018
<i>Observations</i>	352	352	352	283	283	283
<i>Clusters</i>	36	36	36	36	36	36
District FE	Yes	Yes	Yes	Yes	Yes	Yes
Year FE	Yes	Yes	Yes	Yes	Yes	Yes

Notes: Regressions estimated by OLS. Robust standard errors in parentheses clustered by district. Districts are administrative states in Nigeria. Dependent variables are shares of labor union actors in all protest events and in all battles events in each state in (1) to (3) and (4) to (6) respectively over 2000 to 2016 years of available data as described in text. Protest is the continuous z-score measure of protests from the ACLED data as described in text. Battles are defined similarly relative to the z-score. ***Significant at the 1 percent level, **Significant at the 5 percent level, *Significant at the 10 percent level.

A.7 Intergovernmental Transfers, Public Service Provision and Tax Morale Outcomes

States that receive a larger share of their revenues from these protest-linked transfers may face distorted incentives and reduce public spending on public goods. This may in turn reduce tax morale and compliance in states with higher shares of revenue sourced from transfers following the predictions from the tax literature (Luttmer and Singhal, 2014; Frey and Torgler, 2007; Alm, Jackson, and McKee, 1992; Andreoni, Erard, and Feinstein, 1998).

To test these hypotheses, we use data on public service provision perceptions and tax morale from a new 2018 survey of 16, 228 randomly sampled adult respondents in Nigeria (McCulloch, Moerenhout, and Yang, 2020). Summary statistics are provided in Table A10. We estimate longue-duree regressions linking long-run averages of revenue shares to the public service provision and tax morale outcomes with equations of the following form:

$$y_{isz} = \tau \text{Revenue Share}_{sz} + \mathbf{X}'_{isz} \theta + \mathbf{X}'_{sz} \phi + \mu_z + \epsilon_{isz} \quad (8)$$

where y_{isz} is the public service provision perception or tax morale outcome of interest for individual i residing in state s in geopolitical zone z . We include vectors of individual level covariates \mathbf{X}'_{isz} and state level controls \mathbf{X}'_{sz} ³⁴. All regressions include zone fixed effects. Standard errors are clustered at the state level and wild cluster bootstrap p-values are included for inference robustness as before. “Revenue Share” is the long-run average ratio of VAT or allocation transfers or IGR in total state revenue in the military, democratic and pooled periods samples. The results are presented in Table A12 and Table A13. Across all periods, there is a significant negative correlation between the long-run average share of VAT transfers in total state revenues and respondent’s reported satisfaction with provision

³⁴Data is described in detail in Appendix A.1.

of electricity and security in their neighborhoods, shown in column (1) of Table A12. The effects are driven by the military period correlations, and respondents from states with a greater long-run share of VAT transfers in total revenues in the military period report lower public service provision across all public service categories- schools, health, water, electricity and security, in column (4) of Table A12. The correlations are robust to the inclusion of a number of population density, individual, geographic and institutional controls.

The tax morale results are reported in Table A13. Respondents from states with higher historic shares of revenues from VAT transfers are less likely to report paying income taxes and express less satisfaction with state and local government spending and less trust in state and local tax officials as shown in column (1) of Table A13. In contrast, respondents from states with higher historic shares of revenues from IGR are more likely to report paying income taxes with no significant association with tax morale in column (3).

Table A10: Summary Statistics of 2018 Tax Morale Respondents

Statistic	N	Mean	St. Dev.	Min	Max
Individual Statistics					
Age	16,200	32.161	10.466	18	100
Female	16,228	0.500	0.500	0	1
Education	16,189	5.366	2.434	0	11
Urban	16,228	0.700	0.458	0	1
Household Size	16,228	4.519	2.771	1	31
Wealth Index	15,628	2.994	1.415	1	5
Public Service Provision and Tax Attitudes					
Schools	14,848	0.597	0.491	0	1
Health	14,444	0.550	0.498	0	1
Water	11,986	0.375	0.484	0	1
Electricity	14,231	0.371	0.483	0	1
Security	13,704	0.390	0.488	0	1
Paid Income Tax	16,228	0.195	0.396	0	1
Tax Authorities Right	13,150	0.788	0.409	0	1
Satisfied With State Spending	13,577	0.336	0.473	0	1
Satisfied With LGA Spending	13,506	0.290	0.454	0	1
Trust State Tax Officials	15,506	0.855	0.862	0	3
Trust Local Tax Officials	15,507	0.776	0.874	0	3
Likelihood State Misuse Tax	15,582	1.141	0.755	0	2
Likelihood Local Misuse Tax	15,540	1.108	0.758	0	2

Notes: Schools, Health, Water, Electricity and Security are indicators that equal one if the respondent states they are “somewhat satisfied” or “very satisfied” with the service in their area and 0 if they state that they are somewhat or very dissatisfied with the service. Respondent tax attitudes as described in the Data Appendix.

Table A11: Correlations between public service provision and tax morale in 2018

Outcome:	Satisfied State	Satisfied Local	Trust State Tax	Trust Local Tax	Local Misuse Tax	State Misuse Tax	Paid Income Tax	Tax Authorities Right
	(1)	(2)	(3)	(4)	(5)	(6)	(7)	(8)
Schools	0.271*** (0.015) [0.000]	0.260*** (0.017) [0.000]	0.178*** (0.044) [0.000]	0.254*** (0.050) [0.000]	-0.095*** (0.035) [0.023]	-0.052* (0.032) [0.128]	0.006 (0.014) [0.659]	0.076*** (0.025) [0.018]
Mean of outcome	0.336	0.290	0.855	0.776	1.108	1.141	0.195	0.788
Health	0.275*** (0.016) [0.000]	0.273*** (0.018) [0.000]	0.186*** (0.039) [0.000]	0.256*** (0.032) [0.000]	-0.097*** (0.036) [0.025]	-0.047 (0.034) [0.180]	0.003 (0.014) [0.819]	0.066*** (0.023) [0.017]
Mean of outcome	0.336	0.290	0.855	0.776	1.108	1.141	0.195	0.788
Water	0.220*** (0.024) [0.000]	0.236*** (0.019) [0.000]	0.164*** (0.043) [0.001]	0.225*** (0.040) [0.000]	-0.050 (0.032) [0.161]	0.010 (0.040) [0.834]	0.007 (0.011) [0.471]	0.029 (0.029) [0.361]
Mean of outcome	0.336	0.290	0.855	0.776	1.108	1.141	0.195	0.788
Electricity	0.227*** [0.000]	0.221*** [0.000]	0.091** [0.042]	0.126*** [0.000]	-0.019 [0.485]	-0.009 [0.753]	0.024*** [0.007]	-0.004 [0.872]
Mean of outcome	0.336	0.290	0.855	0.776	1.108	1.141	0.195	0.788
Security	0.280*** (0.025) [0.000]	0.288*** (0.023) [0.000]	0.221*** (0.055) [0.000]	0.250*** (0.036) [0.000]	-0.067* (0.037) [0.085]	-0.035 (0.049) [0.526]	0.031** (0.014) [0.029]	0.065*** (0.022) [0.010]
Mean of outcome	0.336	0.290	0.855	0.776	1.108	1.141	0.195	0.788
Population Density	Yes	Yes	Yes	Yes	Yes	Yes	Yes	Yes
Individual Controls	Yes	Yes	Yes	Yes	Yes	Yes	Yes	Yes
Geographic Controls	Yes	Yes	Yes	Yes	Yes	Yes	Yes	Yes
Disease Controls	Yes	Yes	Yes	Yes	Yes	Yes	Yes	Yes
Precolonial and Colonial Controls	Yes	Yes	Yes	Yes	Yes	Yes	Yes	Yes
Zone FE	Yes	Yes	Yes	Yes	Yes	Yes	Yes	Yes

Notes: Regressions estimated by OLS. Robust standard errors in parentheses clustered by state. Wild cluster bootstrap (by state) p-values are in brackets. Dependent variables are reported tax compliance and tax morale outcomes from 2018 survey data as described in text. Covariates are reported satisfaction with public service provision in respondents' area. All regressions use fixed effects at the geopolitical zone level in Nigeria and controls for sub-district or local government area population density in 2006. Individual controls include age, age squared, whether the respondent lives in an urban area, household size, wealth index, educational attainment and gender. Geographic controls at the state level include log per capita GDP in 2010, ruggedness, mean elevation, land suitability for agriculture, distance to capital, indicators for petroleum and seacoast. Disease controls at the sub-district level include malaria suitability and tse tse fly suitability in alternate specifications with results unchanged. Precolonial and colonial controls at the ethnicity-level include the level of precolonial centralization and log total exports of slaves from the region during the Atlantic slave trade. ***Significant at the 1 percent level, **Significant at the 5 percent level, *Significant at the 10 percent level.

Table A12: OLS Estimates: Relationship between historic revenue shares in total state revenues and perceptions of quality of present-day public service provision

Sample Within: Covariate:	All			Military			Democratic		
	VAT Share	Allocation Share	IGR Share	VAT Share	Allocation Share	IGR Share	VAT Share	Allocation Share	IGR Share
	(1)	(2)	(3)	(4)	(5)	(6)	(7)	(8)	(9)
Schools	-4.789 (4.188) [0.442]	-0.093 (0.695) [0.926]	0.171 (0.667) [0.908]	-3.671*** (1.097) [0.048]	-0.042 (0.630) [0.967]	0.383 (0.607) [0.725]	2.701 (2.422) [0.429]	0.207 (0.413) [0.737]	-0.209 (0.361) [0.717]
Mean of outcome	0.557	0.557	0.557	0.559	0.559	0.559	0.595	0.595	0.595
Health	-4.532 (4.467) [0.525]	-0.077 (0.746) [0.954]	0.151 (0.720) [0.927]	-3.299*** (1.153) [0.072]	-0.232 (0.647) [0.813]	0.517 (0.627) [0.664]	3.040 (2.520) [0.412]	0.214 (0.454) [0.763]	-0.220 (0.395) [0.706]
Mean of outcome	0.508	0.508	0.508	0.510	0.510	0.510	0.548	0.548	0.548
Water	-3.760 (4.188) [0.559]	-0.086 (0.531) [0.911]	0.141 (0.524) [0.869]	-3.006*** (1.041) [0.096]	0.129 (0.481) [0.884]	0.157 (0.481) [0.861]	1.589 (1.782) [0.519]	0.111 (0.316) [0.798]	-0.115 (0.275) [0.783]
Mean of outcome	0.343	0.343	0.343	0.347	0.347	0.347	0.371	0.371	0.371
Electricity	-8.004*** (1.799) [0.006]	-0.027 (0.327) [0.967]	-0.169 (0.306) [0.754]	-2.746*** (0.697) [0.013]	-0.066 (0.304) [0.882]	0.313 (0.287) [0.505]	-0.100 (1.380) [0.972]	0.094 (0.207) [0.747]	-0.072 (0.181) [0.782]
Mean of outcome	0.341	0.341	0.341	0.342	0.342	0.342	0.370	0.370	0.370
Security	-4.108** (1.776) [0.122]	-0.035 (0.262) [0.933]	0.105 (0.260) [0.819]	-2.483*** (0.654) [0.015]	-0.115 (0.291) [0.807]	0.128 (0.282) [0.786]	2.501** (1.113) [0.121]	0.197 (0.194) [0.488]	-0.197 (0.169) [0.429]
Mean of outcome	0.349	0.349	0.349	0.351	0.351	0.351	0.388	0.388	0.388
Population Density	Yes	Yes	Yes	Yes	Yes	Yes	Yes	Yes	Yes
Individual Controls	Yes	Yes	Yes	Yes	Yes	Yes	Yes	Yes	Yes
Geographic Controls	Yes	Yes	Yes	Yes	Yes	Yes	Yes	Yes	Yes
Disease Controls	Yes	Yes	Yes	Yes	Yes	Yes	Yes	Yes	Yes
Precolonial and Colonial Controls	Yes	Yes	Yes	Yes	Yes	Yes	Yes	Yes	Yes
Zone FE	Yes	Yes	Yes	Yes	Yes	Yes	Yes	Yes	Yes

Notes: Regressions estimated by OLS. Robust standard errors in parentheses clustered by state. Wild cluster bootstrap (by state) p-values are in brackets. Dependent variables are reported satisfaction with public service provision (schools, health clinic, water supply, electricity supply, security) in the respondent's neighborhood for combined military and democratic sample from columns (1) to (3), military period only from columns (4) to (6) and democratic period only from columns (7) to (9). Covariates are long-run average shares of real VAT and state allocations, and real internally generated revenue (IGR) in total revenue at the state level as described in text. All regressions use fixed effects at the geopolitical zone level in Nigeria and controls for sub-district or local government area population density in 2006. Individual controls include age, age squared, whether the respondent lives in an urban area, household size, wealth index, educational attainment and gender. Geographic controls at the state level include log per capita GDP in 2010, ruggedness, mean elevation, land suitability for agriculture, distance to capital, indicators for petroleum and seacoast. Disease controls at the sub-district level include malaria suitability and tse tse fly suitability in alternate specifications with results unchanged. Precolonial and colonial controls at the ethnicity-level include the level of precolonial centralization and log total exports of slaves from the region during the Atlantic slave trade.***Significant at the 1 percent level, **Significant at the 5 percent level, *Significant at the 10 percent level.

Table A13: OLS Estimates: Relationship between historic revenue shares in total state revenues and and tax morale

Sample Within: Covariate:	All			Military			Democratic		
	VAT Share	Allocation Share	IGR Share	VAT Share	Allocation Share	IGR Share	VAT Share	Allocation Share	IGR Share
	(1)	(2)	(3)	(4)	(5)	(6)	(7)	(8)	(9)
Paid Income Tax	-3.680*** (1.104) [0.027]	-0.192* (0.110) [0.217]	0.239** (0.106) [0.089]	-1.163** (0.455) [0.106]	-0.015 (0.117) [0.942]	0.124 (0.105) [0.334]	-1.598** (0.659) [0.119]	-0.234** (0.103) [0.107]	0.210** (0.091) [0.095]
Mean of outcome	0.164	0.164	0.164	0.167	0.167	0.167	0.193	0.193	0.193
Satisfied With State Spending	-7.551** (3.377) [0.144]	-0.308 (0.508) [0.717]	0.412 (0.504) [0.673]	-3.235*** (1.143) [0.082]	-0.215 (0.509) [0.769]	0.504 (0.470) [0.532]	2.957 (1.965) [0.311]	0.180 (0.304) [0.644]	-0.192 (0.268) [0.619]
Mean of outcome	0.298	0.298	0.298	0.300	0.300	0.300	0.335	0.335	0.335
Satisfied With LGA Spending	-7.478** (3.349) [0.149]	-0.311 (0.497) [0.722]	0.414 (0.494) [0.644]	-3.605*** (1.040) [0.031]	-0.117 (0.506) [0.892]	0.450 (0.461) [0.564]	2.842 (1.916) [0.292]	0.170 (0.297) [0.681]	-0.183 (0.263) [0.619]
Mean of outcome	0.249	0.249	0.249	0.251	0.251	0.251	0.288	0.288	0.288
Trust State Tax Officials	-8.828*** (3.179) [0.130]	0.037 (0.549) [0.962]	0.127 (0.522) [0.837]	-3.323*** (1.214) [0.012]	-0.379 (0.343) [0.409]	0.665* (0.382) [0.201]	2.128 (2.052) [0.436]	0.278 (0.320) [0.525]	0.254 (0.283) [0.523]
Mean of outcome	0.809	0.809	0.809	0.811	0.811	0.811	0.853	0.853	0.853
Trust Local Tax Officials	-12.582*** (3.180) [0.032]	-0.071 (0.683) [0.944]	0.291 (0.630) [0.756]	-4.713*** (1.235) [0.009]	-0.402 (0.427) [0.478]	0.819* (0.431) [0.210]	1.381 (2.578) [0.715]	0.239 (0.435) [0.688]	-0.210 (0.382) [0.714]
Mean of outcome	0.720	0.720	0.720	0.723	0.723	0.723	0.773	0.773	0.773
Population Density	Yes	Yes	Yes	Yes	Yes	Yes	Yes	Yes	Yes
Individual Controls	Yes	Yes	Yes	Yes	Yes	Yes	Yes	Yes	Yes
Geographic Controls	Yes	Yes	Yes	Yes	Yes	Yes	Yes	Yes	Yes
Disease Controls	Yes	Yes	Yes	Yes	Yes	Yes	Yes	Yes	Yes
Precolonial and Colonial Controls	Yes	Yes	Yes	Yes	Yes	Yes	Yes	Yes	Yes
Zone FE	Yes	Yes	Yes	Yes	Yes	Yes	Yes	Yes	Yes

Notes: Regressions estimated by OLS. Robust standard errors in parentheses clustered by state. Wild cluster bootstrap (by state) p-values are in brackets. Dependent variables are respondent's report of whether they paid income tax in the last year (Paid Income Tax), "satisfaction with the way state admin has spent tax money" (Satisfied With State Spending), "satisfaction with the way LGA has spent money collected from levies" (Satisfied With LGA Spending), "trust in state tax officials to collect tax revenue fairly" (Trust State Tax Officials), "trust in local government tax officials to collect revenue fairly" (Trust Local Tax Officials) from 2018 survey data for combined military and democratic sample from columns (1) to (3), military period only from columns (4) to (6) and democratic period only from columns (7) to (9). Covariates are long-run average shares of log real VAT and state allocations, and log real internally generated revenue (IGR) in total revenue at the state level as described in text. All regressions use fixed effects at the geopolitical zone level in Nigeria and controls for sub-district or local government area population density in 2006. Individual controls include age, age squared, whether the respondent lives in an urban area, household size, wealth index, educational attainment and gender. Geographic controls at the state level include log per capita GDP in 2010, ruggedness, mean elevation, land suitability for agriculture, distance to capital, indicators for petroleum and seacoast. Disease controls at the sub-district level include malaria suitability and tse tse fly suitability in alternate specifications with results unchanged. Precolonial and colonial controls at the ethnicity-level include the level of precolonial centralization and log total exports of slaves from the region during the Atlantic slave trade.***Significant at the 1 percent level, **Significant at the 5 percent level, *Significant at the 10 percent level.