



| | |
|------------------------|---|
| Title | Altered Renal Pathology in an Autoimmune Disease Mouse Model After Induction of Diabetes Mellitus |
| Author(s) | Hiramatsu, Shiori; Ichii, Osamu; Namba, Takashi; Otani, Yuki; Nakamura, Teppei; Masum, Md Abdul; Elewa, Yaser Hosny Ali; Kon, Yasuhiro |
| Citation | Microscopy and microanalysis, 27(4), 897-909 https://doi.org/10.1017/S143192762100057X |
| Issue Date | 2021-08 |
| Doc URL | http://hdl.handle.net/2115/84019 |
| Rights | This article has been published in a revised form in [Microscopy Society of America] [http://doi.org/10.1017/S143192762100057X]. This version is published under a Creative Commons CC-BY-NC-ND. No commercial re-distribution or re-use allowed. Derivative works cannot be distributed. ©[The Author(s)]. |
| Rights(URL) | https://creativecommons.org/licenses/by-nc-nd/4.0/ |
| Type | article (author version) |
| Additional Information | There are other files related to this item in HUSCAP. Check the above URL. |
| File Information | Hiramatsu Microscopy and microanalysis.pdf (Figures) |



[Instructions for use](#)

Fig. 1

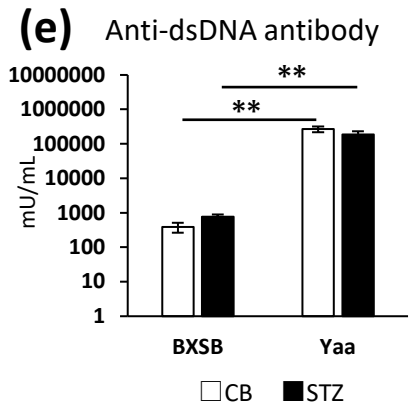
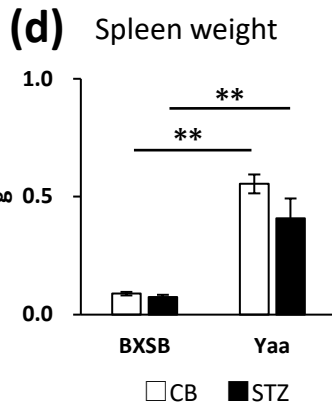
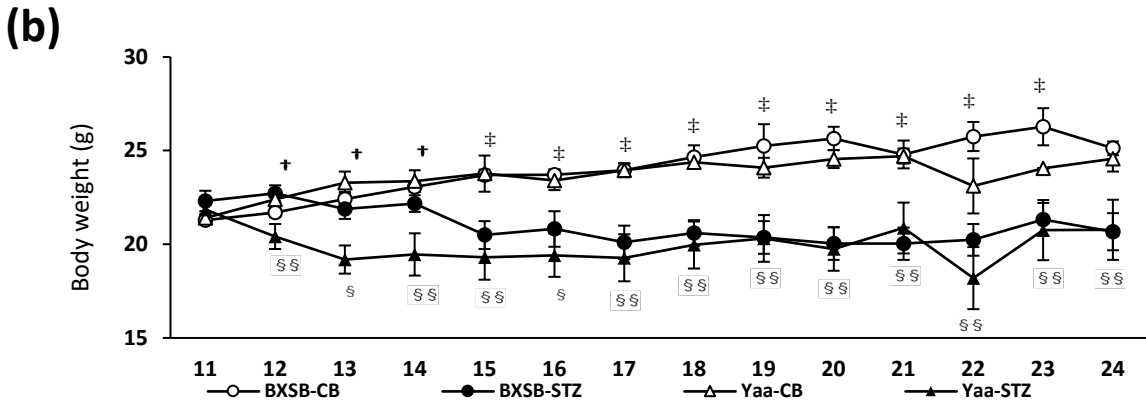
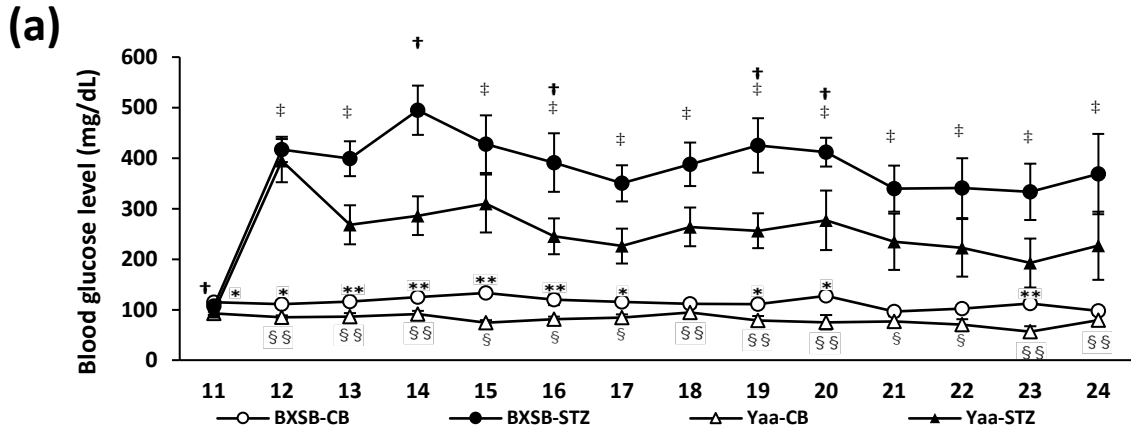


Fig. 2

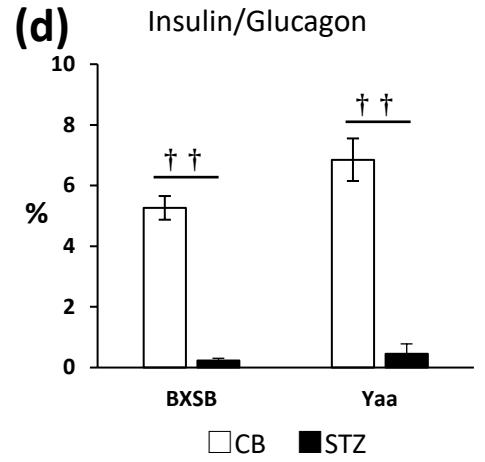
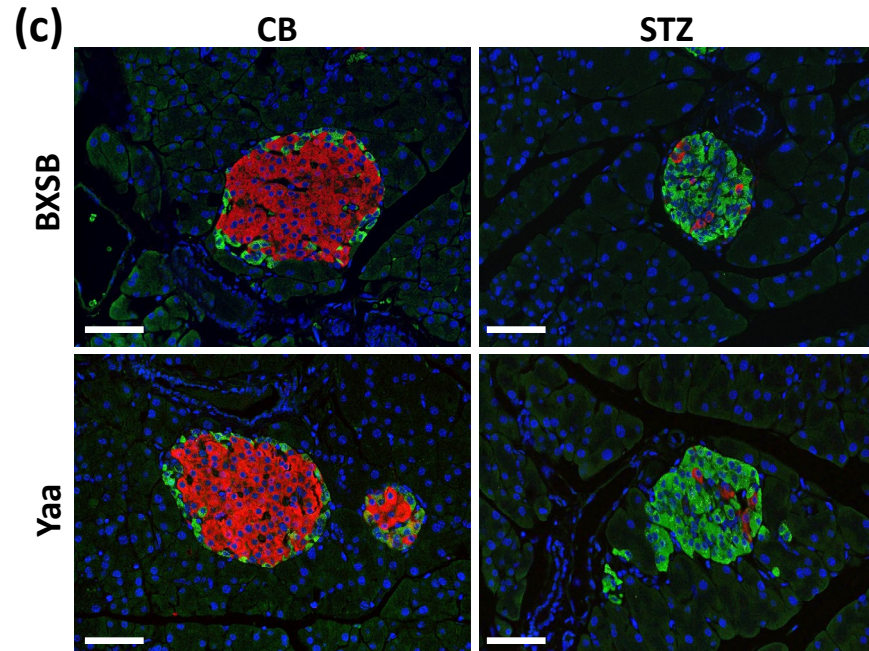
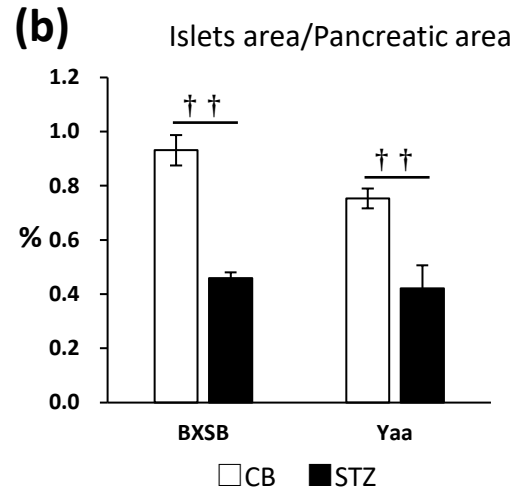
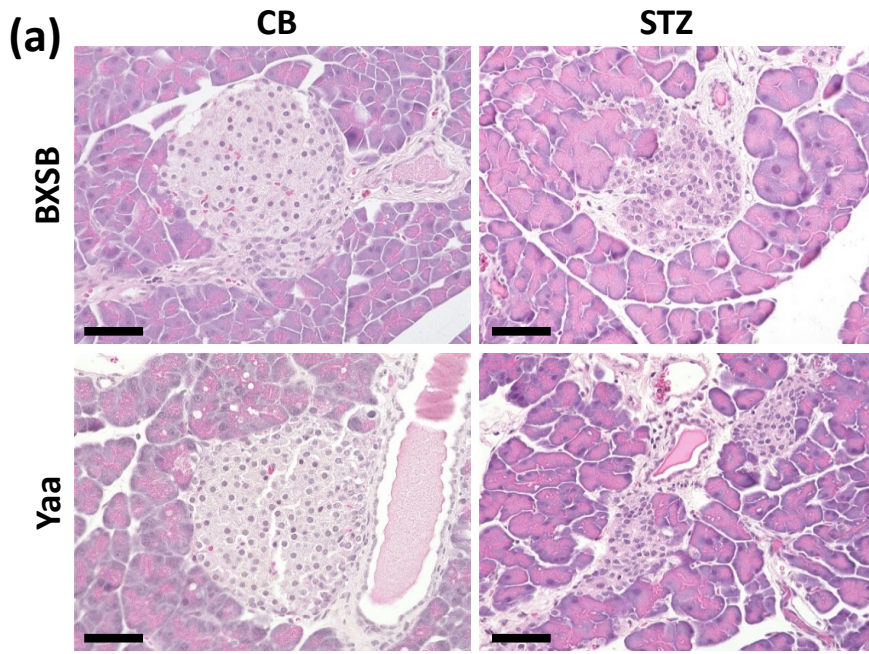


Fig. 3

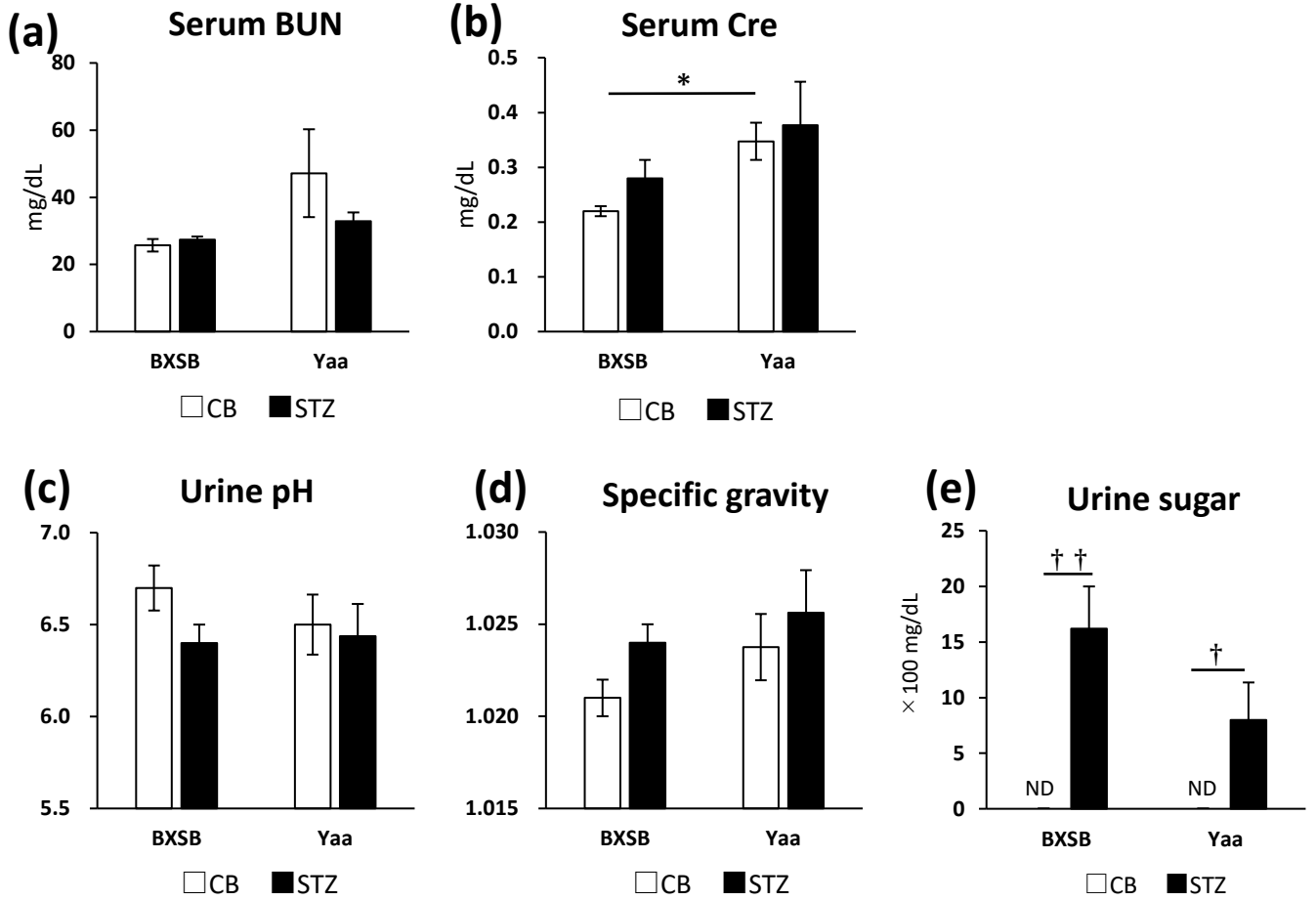


Fig. 4

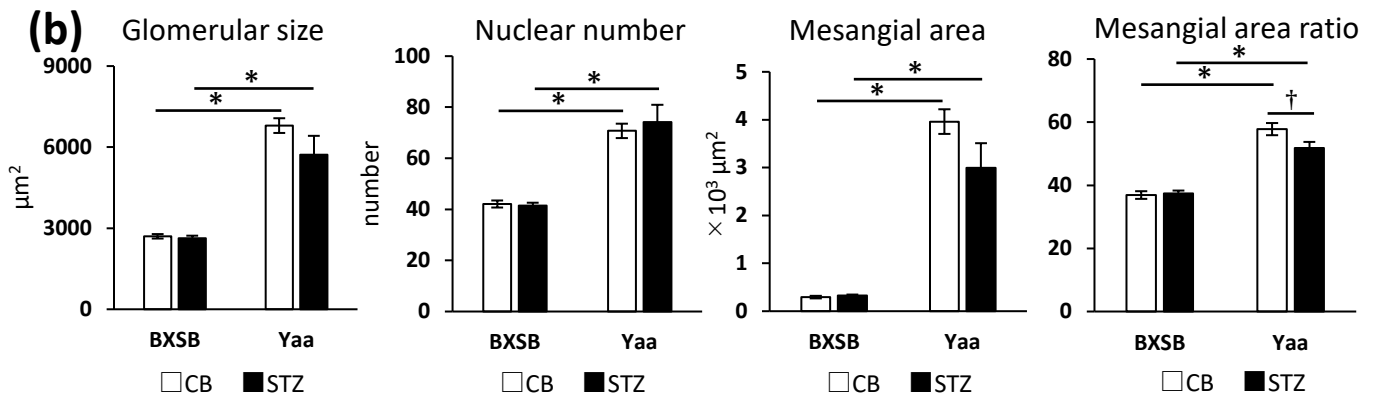
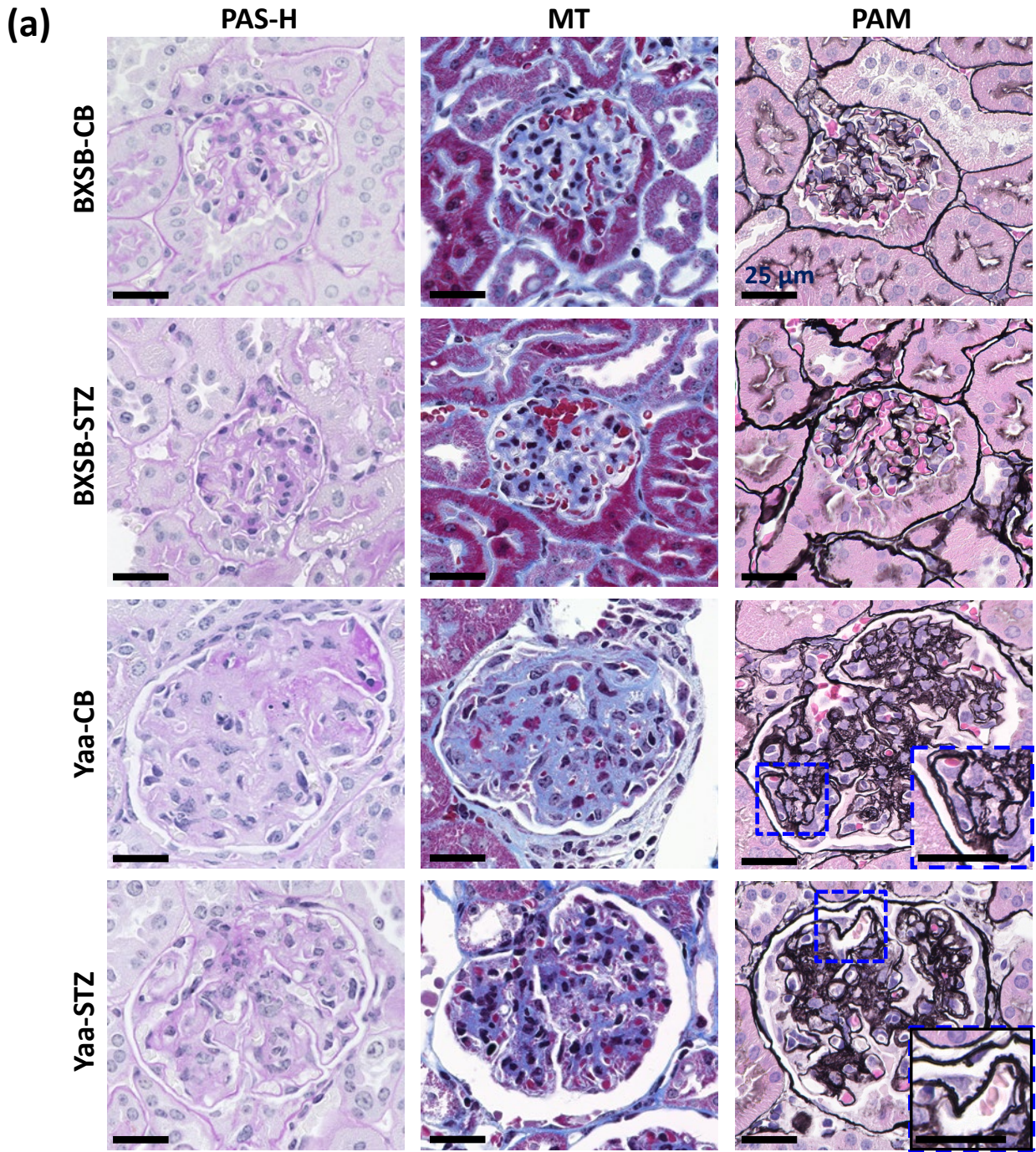


Fig. 5

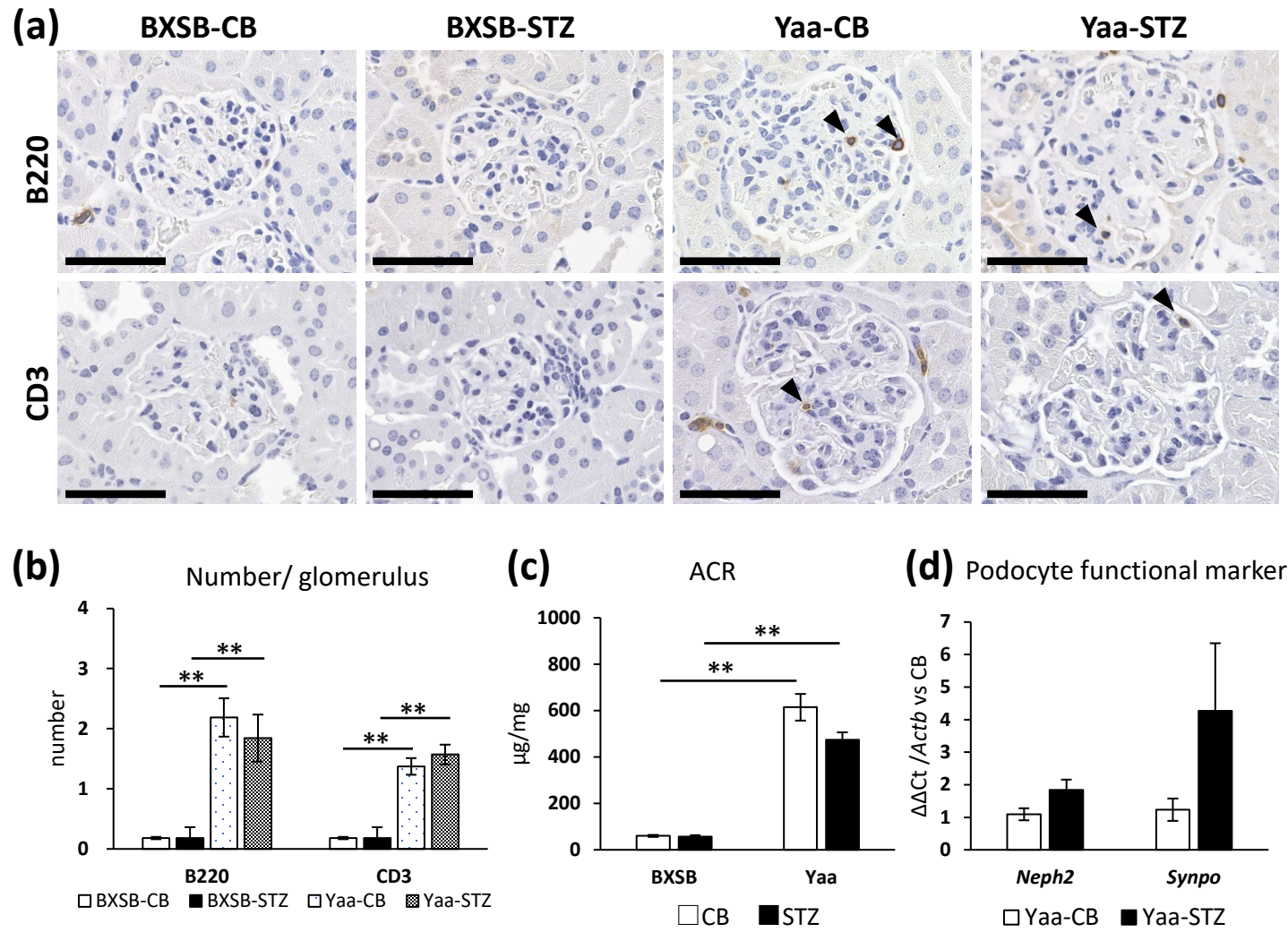


Fig. 6

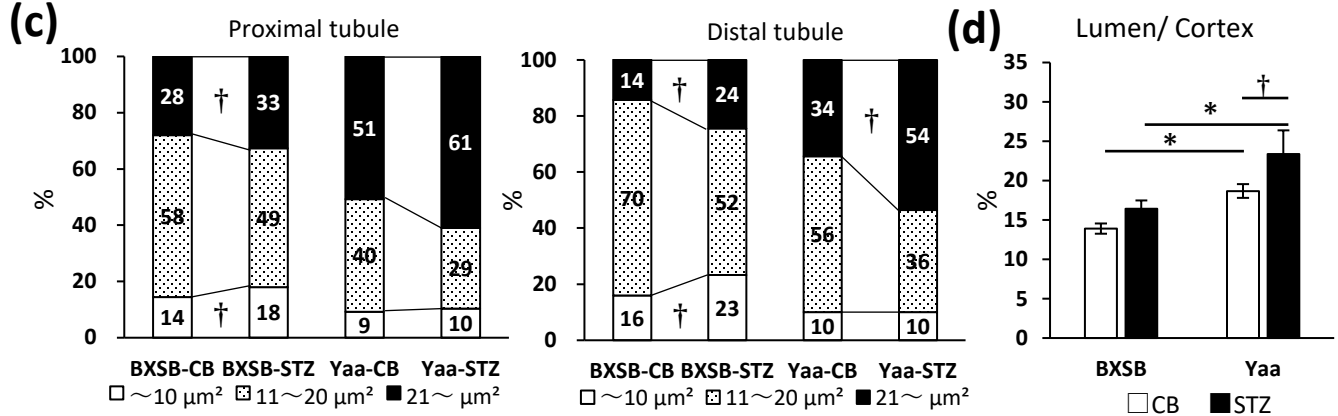
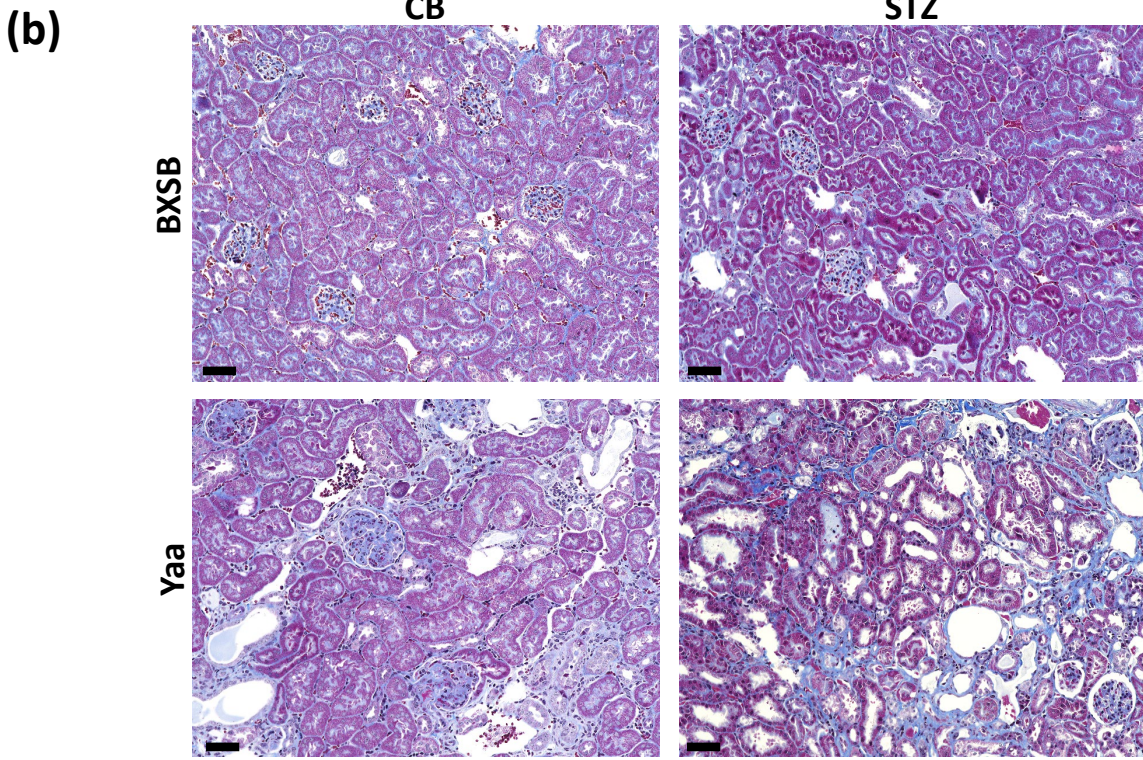
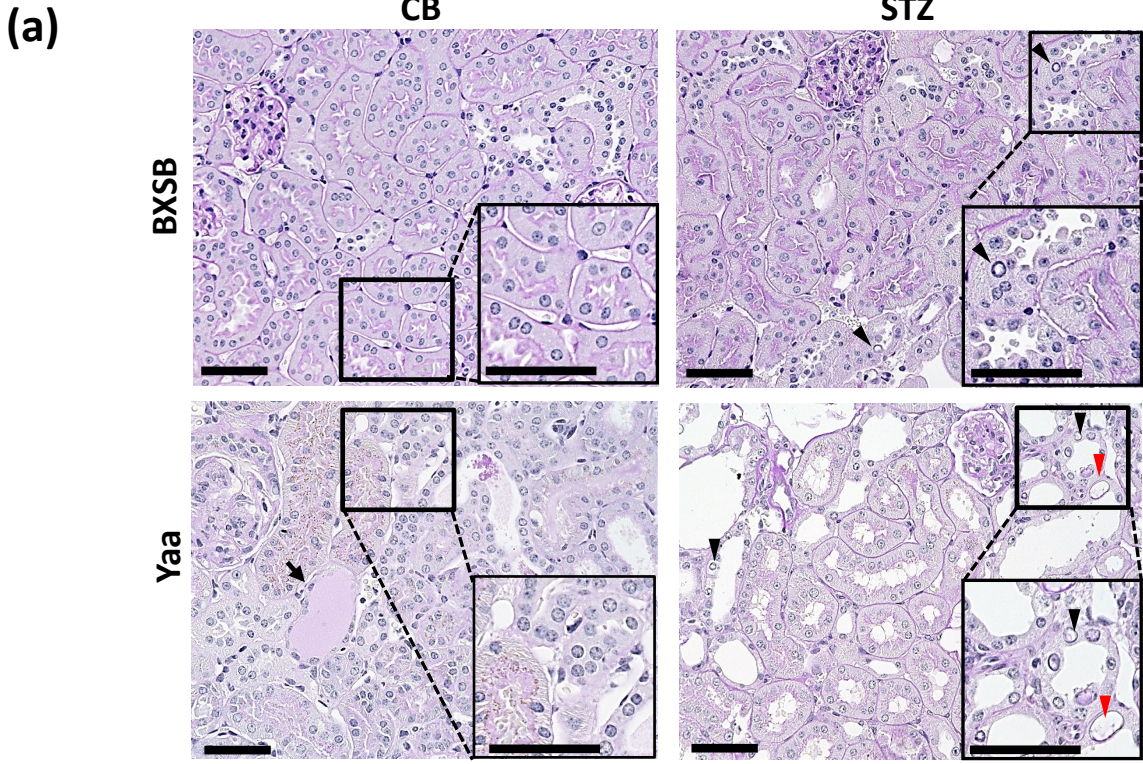


Fig. 7

