



THE UNIVERSITY *of* EDINBURGH

Edinburgh Research Explorer

Morphological and microsatellite DNA diversity of Djallonké sheep in Guinea Bissau

Citation for published version:

Dayo, G-K, Houaga, I, Somda, MB, Linguelegue, A, Ira, M, Konkobo, M, Djassi, B, Gomes, J, Sangare, M, Cassama, B & Yapi-Gnaore, CV 2022, 'Morphological and microsatellite DNA diversity of Djallonké sheep in Guinea Bissau', *BMC Genomic Data*, vol. 23, no. 3. <https://doi.org/10.1186/s12863-021-01009-7>

Digital Object Identifier (DOI):

[10.1186/s12863-021-01009-7](https://doi.org/10.1186/s12863-021-01009-7)

Link:

[Link to publication record in Edinburgh Research Explorer](#)

Document Version:

Publisher's PDF, also known as Version of record

Published In:

BMC Genomic Data

General rights

Copyright for the publications made accessible via the Edinburgh Research Explorer is retained by the author(s) and / or other copyright owners and it is a condition of accessing these publications that users recognise and abide by the legal requirements associated with these rights.

Take down policy

The University of Edinburgh has made every reasonable effort to ensure that Edinburgh Research Explorer content complies with UK legislation. If you believe that the public display of this file breaches copyright please contact openaccess@ed.ac.uk providing details, and we will remove access to the work immediately and investigate your claim.



RESEARCH

Open Access



Morphological and microsatellite DNA diversity of Djallonké sheep in Guinea-Bissau

Guiguigbaza-Kossigan Dayo^{1,2*}, Isidore Houaga^{1,3†}, Martin Bienvenu Somda^{1,4†}, Awa Linguiegue¹, Mamadou Ira¹, Maurice Konkobo¹, Bacar Djassi⁵, Joao Gomes⁵, Mamadou Sangare¹, Bernardo Cassama⁵ and Chia Valentine Yapi-Gnaore¹

Abstract

Background: The present study aimed at characterizing the Djallonké Sheep (DS), the only local sheep breed raised in Guinea-Bissau. A total of 200 animals were sampled from four regions (Bafatá, Gabú, Oio and Cacheu) and described using 7 visual criteria and 8 measurements. These parameters have been studied by principal components analysis. The genetic diversity and population structure of 92 unrelated animals were studied using 12 microsatellite markers.

Results: The values of quantitative characters in the Bafatá region were significantly higher than those obtained in the other three regions. A phenotypic diversity of the DS population was observed and three genetic types distinguished: animals with “large traits” in the region of Bafatá, animals with “intermediate traits” in the regions of Gabú and Oio and animals with “small traits” in the Cacheu region. The hair coat colors are dominated by the white color, the shape of the facial head profile is mainly convex and the ears “erected horizontally”. Most of the morphobiometric characteristics were significantly influenced by the “region” and “sex of animals”. The average Polymorphism Information Content (PIC) of 0.65 ± 0.11 supports the use of markers in genetic characterization. Gabú subpopulation had the highest genetic diversity measures ($He = 0.716 \pm 0.089$) while Cacheu DS subpopulation presented the smallest ($He = 0.651 \pm 0.157$). Only Gabú and Bafatá subpopulations presented significant heterozygote deficiency across all loci indicating possible significant inbreeding. Mean values for F_{IT} , F_{ST} , F_{IS} and G_{ST} statistics across all loci were 0.09, 0.029, 0.063 and 0.043 respectively. The overall genetic differentiation observed between the four DS subpopulations studied was low. Bafatá and Gabú are the most closely related subpopulations ($D_S = 0.04$, genetic identity = 0.96) while Bafatá and Cacheu were the most genetically distant subpopulations ($D_S = 0.14$, genetic identity = 0.87). Using Bayesian approach, the number of K groups that best fit the data is detected between 2 and 3, which is consistent with the morphological analysis and the factorial analysis of correspondence.

* Correspondence: charlesdayo@yahoo.fr

†Isidore Houaga and Martin Bienvenu Somda contributed equally to this work.

¹Centre International de Recherche-Développement sur l'Élevage en zone Subhumide (CIRDES), Bobo-Dioulasso 01 BP 454, Burkina Faso

²Institut du Sahel (INSAH/CILSS), BP 1530 Bamako, Mali

Full list of author information is available at the end of the article



© The Author(s). 2021 **Open Access** This article is licensed under a Creative Commons Attribution 4.0 International License, which permits use, sharing, adaptation, distribution and reproduction in any medium or format, as long as you give appropriate credit to the original author(s) and the source, provide a link to the Creative Commons licence, and indicate if changes were made. The images or other third party material in this article are included in the article's Creative Commons licence, unless indicated otherwise in a credit line to the material. If material is not included in the article's Creative Commons licence and your intended use is not permitted by statutory regulation or exceeds the permitted use, you will need to obtain permission directly from the copyright holder. To view a copy of this licence, visit <http://creativecommons.org/licenses/by/4.0/>. The Creative Commons Public Domain Dedication waiver (<http://creativecommons.org/publicdomain/zero/1.0/>) applies to the data made available in this article, unless otherwise stated in a credit line to the data.

Conclusions: The molecular results on DS population of Guinea-Bissau confirmed the ones obtained with morphological analysis. The three genetic types observed phenotypically might be due to a combination of the agro-ecological differences and the management of breeding rather than genetic factors.

Keywords: Sheep, Morphological diversity, Population structure, Microsatellite DNA, Guinea-Bissau

Background

Livestock is an important source of income, livelihoods, nutrition and food security, as well as resilience in sub-Saharan Africa [1]. In the Republic of Guinea-Bissau, like other West African countries, the economy is dominated by the primary sector (agricultural production) with a contribution of approximately 62% to the Gross Domestic Product (GDP) and agriculture contributes to creating around 95% of jobs [2]. Livestock sector represents the second economic activity after agricultural crops and contributes to 17% of national GDP and 32% of agricultural GDP [3]. In its various forms, livestock occupies 72% of the rural population through multiple functions (economic, social, reserve and savings capital, labor power and improving soil fertility) [4].

The livestock population in Guinea-Bissau is relatively large, very diverse and includes cattle, goats, sheep, pigs, poultry and other animal species [5]. The farming system practiced is of extensive agro-pastoral type with certain specificities depending on the region.

Despite the socio-economic importance of livestock sector in Guinea-Bissau, the animal genetic resources are under-exploited and less valued. In recent years, the contribution of the livestock sub-sector to GDP decreased to 3.5% of national GDP and 7.8% of agricultural GDP [4]. The authors explain this decline by an absence of effective and sustainable strategies for the management of animal genetic resources despite the great potential and assets available to the country. The development of an efficient management strategy of domestic animal genetic resources in Guinea-Bissau requires the characterization and inventory of these genetic resources in order to guide decision-making [6, 7].

In Guinea-Bissau, small ruminants are important in animal husbandry and play a social and nutritional role. Indeed, they are commonly used as a source of protein during social and religious ceremonies (birthday celebrations, baptisms, funerals, weddings) and constitute a savings strategy [8]. They are among the most dominant domestic animal species in the east and north of the country. Djallonké sheep (DS) represents the main local sheep breed of Guinea-Bissau. Despite their appreciation (hardiness, resistance, trypanotolerance, prolificacy and sexual precocity), information on the phenotypic characteristics is very little documented while the molecular characterization has never been done. The goal of the

present study was to improve the knowledge on the local sheep genetic resources of Guinea-Bissau in order to develop sustainable strategies for their development. The specific objectives of this study were to determine the morphobiometric characteristics and to evaluate the genetic diversity of the local DS population in four regions in Guinea-Bissau.

Results

Morphological characterization

Quantitative characters

Basic statistics of quantitative traits in DS subpopulations in the four regions are presented in Table 1.

The values of the Chest Girth (CG), Chest Depth (CD), Height at withers (HW), Ear Length (EL) and Tail Length (TL) in Bafatá subpopulation were significantly higher (KW test, $P < 0.001$) than those of Cacheu, Gabú and Oio regions. In addition, the animals from the Bafatá region had significantly higher Body Length (BL) (ANOVA, $P < 0.001$) than those from other regions. The “region” or “location” had a significant effect on the most of the quantitative body characters of the DS in Guinea-Bissau as presented in Table 1, excepted the following traits: “Horn Length” and “Interval Length between the roots of the two horns”. Three genetic types of DS were distinguished in the four regions: the type with “large traits” for animals in the Bafatá region, the type with “small traits” for animals in Cacheu region and the type with “intermediate traits” for animals in the Gabú and Oio regions. The three genetic types were revealed by the Principal Components Analysis (PCA). The Fig. 1 shows the individuals of Bafatá (black), the individuals of Cacheu (red) and a more heterogeneous population in Gabú (green) and Oio (blue).

In the studied population, 81.5% of animals sampled were females against 18.5% of males and all were 2 to 4 years. A sexual dimorphism was observed for some body parameters. Female animals had higher BL, CG and CD than their male counterparts (Table 1). Contrariwise, male animals had higher Horn Length and Interval Length between the roots of the two horns than the females.

Qualitative characters by region

Values of the qualitative characters of the DS by region are presented in Table 2. In the Gabú, Cacheu and Oio regions, the uniform white body coat color was

Table 1 Descriptive statistics of the morphological traits of the four Djallonké Sheep subpopulations studied

Characters		Bafatá	Cacheu	Gabú	Oio	est (P-value)	All subpopulations
Chest Girth (cm)	min- max	60–82	56–89	56–93	59–80	KW S ($P < 0.001$)	56–93
	Means \pm SD	72.80 \pm 4.68a	67.40 \pm 6.14b	67.22 \pm 6.58b	69.35 \pm 4.83b		69.76 \pm 6.02
Chest Depth (cm)	min- max	32–43	29–39	27–45	23–51	KW S ($P < 0.001$)	23–51
	Means \pm SD	38.05 \pm 2.41a	33.84 \pm 2.34b	33.97 \pm 3.67b	35.15 \pm 4.42b		35.72 \pm 3.76
Height at withers (cm)	min- max	48.4–74.4	46.4–58.4	46.4–62.4	46.4–62.4	KW S ($P < 0.01$)	46.4–74.4
	Means \pm SD	55.65 \pm 4.16a	53.4 \pm 2.85b	53.23 \pm 3.77b	54.67 \pm 3.44ab		54.46 \pm 3.89
Body Length (cm)	min- max	49–70	45–63	50–72	52–64	ANOVA S ($P < 0.001$)	45–72
	Means \pm SD	60.75 \pm 4.51a	53.16 \pm 4.13b	57.50 \pm 4.41c	57.80 \pm 2.88c		58.23 \pm 4.78
Ear Length (cm)	min- max	8–13	7–9	8–13	9–13	KW S ($p < 0.001$)	7–13
	Means \pm SD	10.23 \pm 0.95a	8.16 \pm 0.62b	10.15 \pm 1.02 ac	9.73 \pm 0.78c		9.85 \pm 1.12
Tail Length (cm)	min- max	25–45	19–29	19–33	20–31	KW ($P < 0.001$)	19–45
	Means \pm SD	32.00 \pm 3.29a	23.88 \pm 2.89b	26.73 \pm 2.79c	25.28 \pm 2.77bc		28.06 \pm 4.36
Horn Length (cm)	min- max	6–19	15–23	9–26	2–22	KW (NS)	2–26
	Means \pm SD	13.81 \pm 3.85	18.33 \pm 4.16	14.07 \pm 5.11	10.89 \pm 6.9		13.60 \pm 5.21
Interval Length between the roots of the two horns (cm)	min- max	7–13	4–6	5–10	4–8	KW (NS)	4–13
	Means \pm SD	10.47 \pm 3.56	4.67 \pm 1.15	7.33 \pm 1.45	6.22 \pm 1.48		8.24 \pm 2.52

SD Standard Deviation, *min* Minimum, *max* Maximum, S Significant, NS Non significant, KW Kruskal-Wallis test, ANOVA Analysis of variance

predominant with 81.67, 76.00 and 50.00% respectively. In Bafatá, the eumelanin-black color with tan belly (49.33%) and the uniform white (37.33%) and then the pheomelanin-brown and tan belly (13.33%) were mainly found. The uniform red/fawn was not observed in this study. The type of melanin observed had a significant link with the region (Chi²-test, $P < 0.001$). For the coat color patterns, the uniform white pattern characterized the DS in Gabú, Cacheu and Oio regions, while in Bafatá region the patchy (white-black or white-red/fawn) and the spotted (white color with some black or red/fawn spots without regular distribution) patterns were mostly observed in the proportions of 37.33 and 33.33%, respectively. The patchy pattern with badger face, plain black/brown, black/brown and tan white belly patterns were observed in the Bafatá and Oio regions. Figure 2 illustrates the coat color patterns of black/brown and tan, spotted pattern, patchy (white-black/white-fawn) and uniform white color.

In Cacheu, Gabú and Oio regions, all the animals carried horizontally erected ears, while 2.67% of the animals in Bafatá region had semi-pendulous ears. The facial (chamfer) profile of animals was predominantly convex.

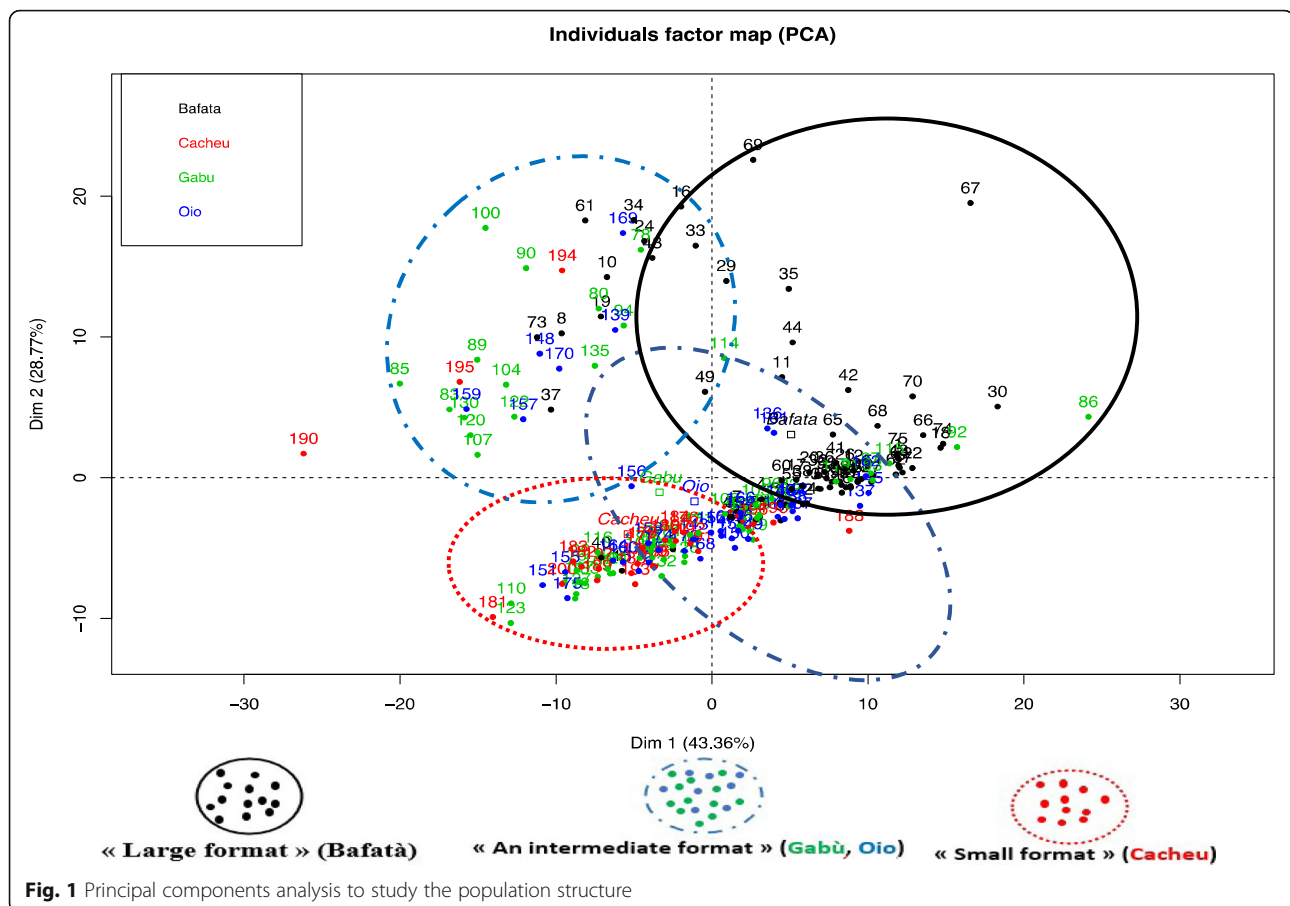
The straight shape was also observed in Bafatá (10.67%), Cacheu (4.00%) and Oio (17.50%).

The different horn shapes and orientations observed in the DS are presented in Table 3. No significant difference was observed between the regions ($P = 0.056$).

The sexual dimorphism was observed for the horn presence and the chamfer profile (Table 3). Indeed, all males were horned against only 6.75% of horned females among which 45.45% were in the form of stumps.

Molecular genetic diversity

The number of alleles (N_a), the allelic richness (AR), the expected (H_e) and observed (H_o) heterozygosities per locus and per DS subpopulation (region) are presented in Table 4. The 12 microsatellite loci used were polymorphic and a total of 89 alleles were detected. The allelic diversity was characterized by the number of alleles ranging from 3 (MAF214) to 10 (MAF10), with an average of 7.42 ± 2.19 . The allelic richness estimated using rarefaction method ranged from 2.57 (SRCRSP1) to 4.49 (ILSTS5), with an average of 3.59 ± 0.67 . Subpopulations from Bafatá and Gabú had higher genetic diversity with H_e values of 0.716 ± 0.089 and 0.697 ± 0.094 , respectively compared to those from Oio (0.655 ± 0.143) and Cacheu



(0.651 ± 0.157) regions. Cacheu Djallonké subpopulation presented the smallest diversity index. In Bafatá, Gabú and Cacheu regions, the average observed heterozygosities were lower than the expected heterozygosities under Hardy-Weinberg Equilibrium (HWE).

Table 4 Number of alleles (N_a), allelic richness (AR), expected (H_e) and observed (H_o) heterozygosities per loci in the four subpopulations of Djallonké sheep.

The effective A_e , the Polymorphic Information Content (PIC) and the F-Statistics (F_{IT} , F_{ST} , F_{IS}) according to Weir and Cockerham (1984) for all the microsatellite markers analyzed over the four DS subpopulations are presented in Table 5. The effective A_e varied from 2 (SRCRSP1) to 5.24 (ILSTS5) with an average of 3.52 ± 1.04 . SRCRSP1 locus was the lowest informative with a PIC of 0.45 while ILST S5 locus presented the highest value of PIC (0.78) and the average value was 0.65 ± 0.11 .

The mean values of F_{IT} , F_{ST} , F_{IS} were 0.09, 0.029 and 0.063, respectively. Values of G_{ST} ranged from 0.015 for MAF65 to 0.152 for OarJMP58, with a mean of 0.043 showing that the gene variation among subpopulations is still low. The F_{ST} value (0.029) showed that most of the total genetic variation corresponds to differences among individuals within subpopulation (97.10%) and

only 2.90% result from differences among subpopulations.

The overall estimate of F_{IS} was 0.063 ± 0.029 . The subpopulation-wise F_{IS} estimates were significantly ($P < 0.01$) greater than zero in Bafatá and Gabú subpopulations, suggesting a deviation from HWE (Table 6). The exact tests also showed a significant deviation from HWE for some markers in the different subpopulations.

The overall differentiation level of the subpopulations was very low ($F_{ST} = 0.029 \pm 0.016$). Among the four subpopulations, the lowest genetic distance was observed between Bafatá and Gabú subpopulations (0.0406) and the highest between Bafatá and Cacheu subpopulations (0.1412). The genetic distances and the genetic identity according to Nei (1978) are summarized in Table 7.

From the unrooted neighbor-joining tree constructed using the genetic distances (Fig. 3), the subpopulation from Cacheu region relatively differed from the three other subpopulations.

Genetic structure of subpopulations by factorial correspondence analysis

The factorial correspondence analysis (Fig. 4) clustered the studied population in three groups: group 1 with

Table 2 Distribution of the qualitative traits of Djallonké Sheep

Qualitative traits	Bafatá	Cacheu	Gabú	Oio	Chi ² -test
Coat color patterns (%)					
Patchy (white-black/white-fawn)	13.33	4.00	3.33	20.00	
Patchy with badger face	9.33	4.00	1.67	0.00	
Uniform white	37.33	76.00	81.67	50.00	
Uniform black/brown	1.33	0.00	0.00	5.00	
Black/brown with tan belly	5.33	0.00	0.00	2.50	
Spotted of white and black / red/fawn	33.33	16.00	13.33	22.50	S ($P < 0.001$)
Types of melanin pigments (%)					
Absence of pigment (Uniform white)	37.33	76.00	81.67	50.00	
Pheomelanin	13.33	8.00	3.33	7.50	
Eumelanin	49.33	16.00	15.00	42.50	S ($P < 0.001$)
Horn presence (%)					
Presence	28	12	25	22.5	
Absence	72	88	75	77.5	NS ($P > 0.05$)
Horn shape and orientation (%)					
Lateral and straight horns	42.86	33.33	80.00	55.56	
Prismatic or corkscrew	0.00	0.00	0.00	11.11	
Backward spiral horns	23.81	0.00	6.67	0.00	
Spiral horns facing forward	9.52	66.67	13.33	33.33	
Stumps	23.81	0.00	0.00	0.00	$P = 0.056$
Ear orientation (%)					
Erect horizontally	97.33	100.00	100.00	100.00	
Semi-pendulous	2.67	0.00	0.00	0.00	NS ($P > 0.05$)
Facial (chamfer) profile (%)					
Convex	89.33	96	100	82.5	
Straight	10.67	4	0	17.5	S ($P < 0.01$)

S Significant, NS Non significant

Bafatá and Gabú subpopulations, group 2 with predominantly Oio subpopulation and group 3 with the Cacheu subpopulation. Although the F_{ST} -pairwise values were very low, the FCA allowed to represent the different subpopulations. The factorial axis 1 (43.93%) separates Bafatá and Gabú subpopulations from those of Oio and Cacheu while the factorial axis 2 (36.81%) isolated Oio subpopulation from Cacheu subpopulation.

Using Bayesian approach implemented in Structure Software and Evanno method [9], the number of K groups that best fit the data is detected between 2 and 3 (Fig. 5).

Assuming $K = 2$, Cacheu and Oio clustered in the group 1 with 54.8 and 56.1% respectively while Bafatá and Gabú clustered in group 2 with 52.9 and 52.8% respectively. At $K = 3$, Bafatá and Gabú subpopulations with 47.5 and 49.8% respectively remained in the cluster 1, Cacheu (50.9%) and Oio (50.6%) in the Cluster 2 and the four subpopulations were in the cluster 3 with 13.8% for Bafatá, 6.4% for Cacheu, 6.5% for Gabú and 6.4% for Oio (Fig. 6).

Discussion

Morphological diversity

Quantitative characters

DS in Guinea-Bissau can be classified into three “genetic types” associated to three the “large animals” in the Bafatá region, “intermediate traits” for sheep in the Gabú and Oio regions and “small animals” in the Cacheu region. Indeed, the average values of the quantitative characters (CG, CD, HW, BL, EL and TL) of the Bafatá DS subpopulation were significantly higher than those obtained in the Gabú, Oio and Cacheu regions. This gradient in the size of the morphological traits could be explained by the differences in the agro-ecological conditions, the farming practices and genetic background. In fact, the agro-ecological area of the North-East, which includes the Bafatá, Gabú and Oio regions, is characterized by savannah trees and clear forests, which offer rich natural pastures to pastoralists who are Fulani and Mandingos. Moreover, the livestock is dominated by ruminant species. Contrariwise, in the North-West

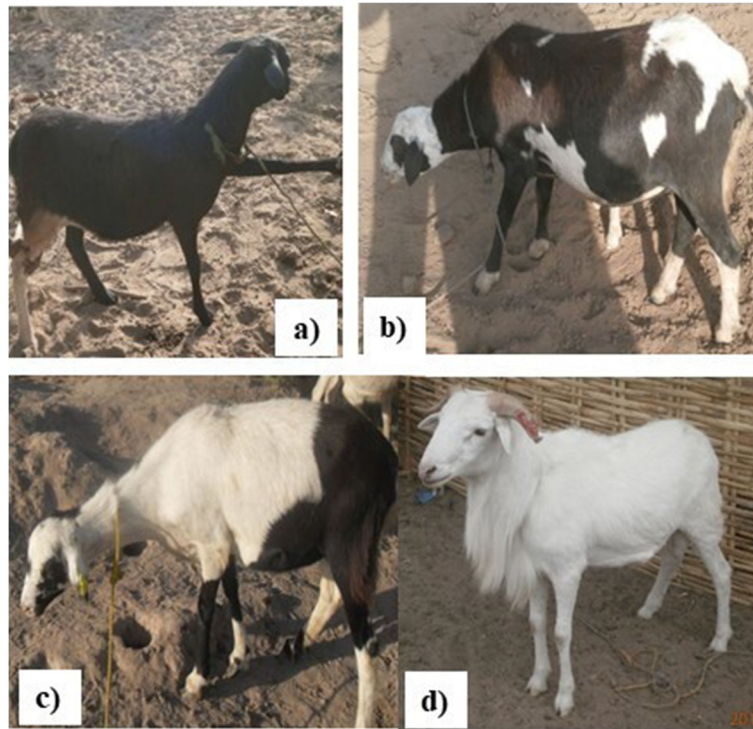


Fig. 2 a Uniform black with tan belly; b Spotted/pied; c Patchy white-black with badger face; d Uniform white (PROGEVAL, 2017)

agro-ecological zone including the Cacheu region, ruminant species (sheep, goat and cattle) are mainly raised for ritual ceremonies by breeders who are rather animistic [10]. In addition, this zone is covered with wooded savannahs and dense forests hardly accessible by animals, hence the predominance of the sedentary system in the Cacheu region. At the cultural level, Bafatá region is mainly populated by Fula-speaking people, practicing the Muslim religion and traditionally attached to animal husbandry compared to the other regions (Cacheu and Oio) where the populations are strongly Christianized and more

attached to pig farming. The Bafatá region is also a large area of ruminant species concentration during the transhumance period and hosts the most important livestock market in the country. This region generally receives animals from Gabú and both Gabú and Bafatá regions have more than 70% of the country's ruminant livestock [4]. During the dry season (November to May), ruminants from the Gabú region migrate to the Bafatá and Oio regions [11].

Sheep from the Cacheu region had the smallest size in the study area. In fact, Cacheu is one of the regions of the North-West agro-ecological zone with high humidity

Table 3 Effects of sex on significant morphological characters

Characters	Attributes	Females	Males	Chi ² -test
Facial (chamfer) profile (%)	Convex	90.18	100	
	Straight	9.82	0	S ($P < 0.01$)
Horn presence (%)	Presence	6.75	100	
	Absence	93.25	0	S ($P < 0.001$)
Horn shape and orientation (%)	Lateral and straight horns	45.45	59.46	NS
	Prismatic or corkscrew	0	2.70	NS
	Backward spiral horns	9.09	13.51	NS
	Spiral horns facing forward	0	24.32	NS
	Stumps	45.45	0	S ($P < 0.001$)

S Significant, NS Not significant

Table 4 Number of alleles (*Na*), allelic richness (*AR*), expected (*He*) and observed (*Ho*) heterozygosities per loci in the four subpopulations of Djallonké sheep

Loci		Bafatá	Cacheu	Gabú	Oio	All populations
ILSTS5	<i>Na</i>	6	5	8	6	8
	<i>AR</i>	4.18	4.15	4.85	4.16	4.49
	<i>He</i>	0.794	0.804	0.845	0.788	
	<i>Ho</i>	0.692	0.714	0.895	0.938	
OarCB226	<i>Na</i>	7	5	6	6	8
	<i>AR</i>	3.23	3.52	3.39	3.24	3.37
	<i>He</i>	0.591	0.706	0.643	0.598	
	<i>Ho</i>	0.591	0.800	0.556	0.625	
OarFCB193	<i>Na</i>	7	5	7	6	9
	<i>AR</i>	4.11	3.49	4.05	4.22	4.03
	<i>He</i>	0.774	0.701	0.760	0.791	
	<i>Ho</i>	0.500	0.800	0.800	0.652	
OarFCB304	<i>Na</i>	7	5	6	6	9
	<i>AR</i>	4.04	3.43	3.97	2.46	3.68
	<i>He</i>	0.780	0.664	0.777	0.369	
	<i>Ho</i>	0.654	0.333	0.704	0.333	
ILSTS11	<i>Na</i>	3	3	4	5	6
	<i>AR</i>	2.40	2.69	2.83	2.76	2.76
	<i>He</i>	0.574	0.549	0.627	0.590	
	<i>Ho</i>	0.200	0.533	0.316	0.458	
MCM140	<i>Na</i>	7	6	7	6	9
	<i>AR</i>	4.49	4.25	4.40	3.80	4.29
	<i>He</i>	0.817	0.802	0.809	0.715	
	<i>Ho</i>	0.842	0.933	0.815	0.708	
OarJMP58	<i>Na</i>	4	4	3	5	8
	<i>AR</i>	4.00	2.70	3.00	3.20	3.49
	<i>He</i>	0.750	0.487	0.733	0.693	
	<i>Ho</i>	0.750	0.467	0.400	0.783	
SRCRSP1	<i>Na</i>	4	3	3	3	4
	<i>AR</i>	2.76	2.09	2.62	2.63	2.57
	<i>He</i>	0.535	0.301	0.553	0.531	
	<i>Ho</i>	0.300	0.200	0.630	0.583	
MAF214	<i>Na</i>	3	3	3	3	3
	<i>AR</i>	2.82	2.65	2.79	2.52	2.70
	<i>He</i>	0.634	0.545	0.614	0.479	
	<i>Ho</i>	0.500	0.667	0.482	0.609	
MAF65	<i>Na</i>	5	4	4	4	6
	<i>AR</i>	3.27	3.26	3.16	3.26	3.25
	<i>He</i>	0.690	0.692	0.698	0.699	
	<i>Ho</i>	0.808	0.667	0.667	0.652	
MAF70	<i>Na</i>	8	7	10	8	10
	<i>AR</i>	3.51	4.98	4.25	4.43	4.35
	<i>He</i>	0.696	0.860	0.750	0.788	

Table 4 Number of alleles (*Na*), allelic richness (*AR*), expected (*He*) and observed (*Ho*) heterozygosities per loci in the four subpopulations of Djallonké sheep (Continued)

Loci		Bafatá	Cacheu	Gabú	Oio	All populations
OarCP34	<i>Ho</i>	0.560	0.800	0.769	0.652	
	<i>Na</i>	7	4	5	7	9
	<i>AR</i>	4.01	3.41	4.04	4.49	4.10
	<i>He</i>	0.736	0.699	0.783	0.824	
	<i>Ho</i>	0.600	0.733	0.692	0.913	
Mean ± SD	<i>Na</i>	5.67 ± 1.78	4.50 ± 1.24	5.50 ± 2.24	5.42 ± 1.51	7.42 ± 2.19
Mean ± SD	<i>AR</i>	3.57 ± 0.67	3.39 ± 0.80	3.61 ± 0.73	3.43 ± 0.76	3.59 ± 0.67
Mean ± SD	<i>He</i>	0.697 ± 0.094	0.651 ± 0.157	0.716 ± 0.089	0.655 ± 0.143	0.680 ± 0.032
Mean ± SD	<i>Ho</i>	0.583 ± 0.192	0.637 ± 0.215	0.644 ± 0.176	0.659 ± 0.169	0.631 ± 0.033

SD Standard Deviation

favorable to parasitism and vectors of pathogens such as tsetse flies which transmit the trypanosomes causing African animal trypanosomosis.

DS subpopulations of the Gabú and Oio regions were highly heterogeneous with an “intermediate genetic type”, probably due to the introduction of improving rams in these regions in the past [12]. This heterogeneity is observed not only between regions but also within region (Fig. 1). The effect of the agro-ecological zone on the morphological types of ruminants, especially sheep, has been previously reported in Côte d’Ivoire in DS [13], in Senegal with Peul-peul (Fulani) sheep [14] and in Togo in Vogan Sheep and DS [15]. A recent morphobiometric characterization of DS in the sudano-guinean zone of Cameroon revealed three genetic types [16] as observed in the present study in Guinea-Bissau. In Burkina Faso, Traoré et al. [17] described a sheep

population named “Mossi sheep” which is a savannah DS found in an agro-ecological zone between the sudano-sahelian zone and the sudano-guinean zone with an “intermediate type” between DS and sahelian sheep.

The average values of HW obtained (55.67 ± 4.16 cm for the Bafatá region, 54.67 ± 3.44 cm for the Oio region, 53.44 ± 2.85 cm for the Cacheu region and 53.23 ± 3.77 cm for Gabú region) are closed to those reported by Dayo et al. [15] in DS in Togo ($HW = 54.63 \pm 8.23$ cm; $BL = 58.47 \pm 6.30$ cm and $CG = 74.72 \pm 8.28$ cm) and Sangaré [18] in DS in West Africa and Gueye [19] in Senegal. Similar results have also been reported in other populations of DS in Ghana ($HW = 57.06 \pm 0.28$ cm; $BL = 54.87 \pm 0.35$ cm and $CG = 69.19 \pm 0.41$ cm) by Birteeb et al. [20] and Asamoah-Boaheng and Sam [21] and in Côte d’Ivoire ($HW = 59.60 \pm 5.40$ cm; $BL = 57.80 \pm 5.40$ cm and $CG = 70.80 \pm 6.50$ cm) by N’Goran et al.

Table 5 Effective number of alleles (*Ae*), Polymorphism Information Content (PIC) and the F-Statistics (F_{IT} , F_{ST} , F_{IS}) according to Weir and Cockerham (1984) for 12 microsatellite markers analyzed in four Djallonké sheep subpopulations

Loci	<i>Ae</i>	PIC	F_{IT}	F_{ST}	F_{IS}	<i>st</i>
ILSTS5	5.24	0.7823	-0.006	0.009	-0.015	0.031
OarCB226	2.66	0.5888	0.005	-0.000	0.005	0.019
OarFCB193	4.11	0.72	0.086	-0.001	0.087*	0.021
OarFCB304	3.33	0.6622	0.262	0.091	0.188*	0.085
ILSTS11	2.44	0.5142	0.335	0.003	0.333**	0.036
MCM140	4.69	0.758	-0.022	0.016	-0.038	0.029
OarJMP58	3.46	0.6581	0.165	0.169	-0.005	0.152
SRCRSP1	2.00	0.4491	0.075	0.006	0.070	0.028
MAF214	2.34	0.5098	0.047	0.003	0.045	0.020
MAF65	3.22	0.6301	-0.015	-0.002	-0.012	0.015
MAF70	4.38	0.7441	0.122	0.020	0.104*	0.036
OarCP34	4.37	0.7384	0.062	0.015	0.048	0.031
Means ± SD	3.52 ± 1.04	0.65 ± 0.11	0.090 ± 0.031	0.029 ± 0.016	0.063 ± 0.029	0.043

SD Standard Deviation

Table 6 F_{IS} values in the four Djallonké Sheep subpopulations

Loci	Bafatá	Cacheu	Gabú	Oio
ILSTS5	0.133	0.116	-0.061	-0.197
OarCB226	0.000	-0.139	0.138	-0.047
OarFCB193	0.362*	-0.147	-0.054	0.179**
OarFCB304	0.164	0.507*	0.096	0.098
ILSTS11	0.664*	0.030	0.503**	0.226
MCM140	-0.032	-0.170	-0.007	0.009
OarJMP58	0.000	0.044	0.484	-0.133
SRCRSP1	0.445**	0.344	-0.142	-0.101
MAF214	0.215*	-0.233	0.219	-0.278
MAF65	-0.174	0.038	0.046	0.068
MAF70	0.199	0.072	-0.027	0.176*
OarCP34	0.187	-0.051	0.118	-0.111
All loci	0.169***	0.022	0.107**	-0.006

* $P < 0.05$, ** $P < 0.01$, *** $P < 0.001$

[13]. However, the values of the present study were higher than those previously reported by Hadzi [22] in DS in Togo and in Guinea-Bissau [8]. These results could be explained by the differences of climatic conditions of the agro-ecological zones in which these studied populations are bred, the study periods of the year (season effect), the farming systems or the genetic variability that could be observed between DS populations across the countries. It has been reported the existence of two sub-categories of DS [23, 24] and DS of savannah are larger than those of forest zones [25], demonstrating once more the effect of the agro-ecological zone on the morphological type of this sheep breed.

The tail of the DS is thin and relatively long. The average TL (28.06 ± 4.36 cm) is similar to those reported by N'Goran et al. [13] in DS in Côte d'Ivoire (24.70 ± 3.40 cm) and in Togo (27.47 ± 8.05 cm) [15]. This TL is longer than those reported in the DS (West African Dwarf) by Gbangboche et al. [25] in Benin (17 cm), in Nigeria (19.42 ± 0.63 cm) [26] but shorter than those of the Sahelian sheep (48.20 ± 5.37 cm) and Vogan sheep from Togo (45.24 ± 6.23 cm) [15].

Concerning the ear length, the value obtained (9.85 ± 1.12 cm) is similar to value reported by Gbangboche et al. [25] in West-Africa, who found that DS has small ears, about 10 cm. However, the value in the present

Table 7 Genetic distance (below the diagonal) and genetic identity (above the diagonal) according to Nei (1978)

	Bafatá	Cacheu	Gabú	Oio
Bafatá	–	0.8683	0.9603	0.9107
Cacheu	0.1412	–	0.9097	0.8940
Gabú	0.0406	0.0946	–	0.9440
Oio	0.0936	0.1121	0.0576	–

study is lower than those reported in DS in West Africa: 13.03 ± 0.39 cm in Nigeria [26], 11.61 ± 2.61 cm in Togo [15]) and in the Peul-peul (Fulani) sheep (13.30 ± 1.20 cm) in Senegal [14]; and significantly shorter than those recorded in Vogan sheep (18.45 ± 2.08 cm) and Sahelian sheep (21.63 ± 2.48 cm) [15]. No sexual dimorphism was observed for this trait contrary to Gueye [19] who showed that male sheep and goats had slightly longer ears than females in Senegal.

Qualitative characters

The coat color pattern in DS in Guinea-Bissau is dominated by the uniform white pattern and the spotted white and brown / fawn pattern in all regions. In the Bafatá region, the frequency of the spotted pattern is higher than in the other three regions. Indeed, for the Muslim populations in Bafatá and Gabú regions, the rams are preferentially slaughtered while the uniform white or spotted ewes are kept for the reproduction in order to have the offspring with white coat color. This explained the presence of only few rams in most of herds. The higher proportion of animals with uniform white color pattern could also be due to a strong selection of animals expressing the white coat color to meet the livestock market demands (higher price than other coat colors) and the cultural preference in the country (religious sacrifices or gifts during baptism celebrations and the “Eid El-Kebir” (Tabaski) celebration or for the dowry). The preferences for the coat color of animals differ from one society to another. For example, in southern Ethiopia, red coat color for ewes is the most suitable for market demands [27]. In Côte d'Ivoire, the DS had at 55.00% patchy white-black coat color compared to 24.00% uniform white coat [13], and only 5.88% of the DS were white in southern Togo [15]. This diversity for coat color in DS in West Africa is linked to the choices made by the societies in which these animals are raised. In Ferlo zone in Senegal, the dominant coat color of the Peul-peul sheep has evolved from patchy (white-black or white-red/fawn) [19] to spotted of white and black / red/fawn [28].

The ears of DS in Guinea-Bissau are mostly erected horizontally and only 2.67% of animals in the Bafatá region had slightly drooping ears. These results agree with those of Dayo et al. [15] in DS from Togo (86.27%) and N'Goran et al. [13] in Côte d'Ivoire (87.00%). Drooping ears in DS are considered to be the result of Sahelian sheep genes introgression [13, 15]. Thus, the presence of animals with slightly drooping ears in the Bafatá region (2.67%) could be explained by crosses occurred with Sahelian sheep from neighboring countries, especially from Senegal.

Sexual dimorphism has been observed for the presence of horns with only 6.75% females horned in our study.

This proportion is higher than the 2.30% often reported for ewes wearing horns (most are stumps); but lower than the 14.60% of Mossi ewes carrying horns in Burkina Faso [17]. The horns are developed for rams and absent or in stumps in ewes. In the current study, the most of horned ewes were from the regions of Bafatá and Oio where small ruminants and cattle move during the transhumance in the dry season [11]. Horned ewes are thought to have come from crossing with transhumant animals. It is important to highlight that in half of these ewes, the horns are in stumps.

The horn shapes were significantly different according to the zone: horns laterally straight were the most observed in Bafatá, Gabú and Oio regions while spiral horns facing forward predominated in the forest and humid Cacheu region similarly to the one reported by Dayo et al. [15] in the south of Togo.

Molecular genetic diversity

The current study provides the first information on molecular genetic characterization of DS in Guinea-Bissau and is complementary to the morphological characterization of this breed. This study presents a comprehensive genetic analysis of DS, the assumed only sheep breed of Guinea-Bissau, from four administrative regions covering two agro-ecological zones. The genetic diversity of subpopulations was influenced by the socio-cultural practices and agro-ecological zones. Similar observations were reported by prior studies in West African DS [29]. Indeed, these authors had reported that Malian, Gambian and eastern Guinean DS populations had higher genetic diversity than those from Senegal and southern and western Guinean using expected heterozygosity (H_e) and the mean number of alleles (N_a). Based on the H_e , Cacheu and Oio DS subpopulations would be closer to Senegalese, Gambian southern and western Guinean populations while Bafatá and Gabú DS presented similar expected heterozygosities to Malian and eastern Guinean DS. The N_a in the current study

(7.42 ± 2.19) was similar to those obtained by Wafula et al. [29] in Guinean and Malian DS and Agaviezor et al. [26] in West African Dwarf sheep in Nigeria. However, the allelic richness (adjusted mean number of alleles) values were lower than those reported by Wafula et al. [29] and Agaviezor et al. [26] and probably due to the small sample size used for genotyping in our study.

Genetic structure of the population

Using different population differentiation parameters (F_{ST} , G_{ST} , genetic distance, genetic identity) and representation (NJ Tree and FCA), our results showed that the population differentiation over the 4 subpopulations is very low since the multi-locus F_{ST} and G_{ST} values indicated that only 2.9 and 4.3% respectively of the total genetic variation were due to the subpopulation differences. The remaining 97.1 for F_{ST} and 95.7 for G_{ST} corresponded to differences between individuals within the subpopulations. These values were lower than those (8.8% for F_{ST} and 12% for G_{ST}) reported by Agaviezor et al. [26] in four sheep populations in Nigeria (Udah, Balami, Yankasa and West African Dwarf sheep also known as DS). Even though the genetic differentiation observed between the four DS subpopulations in Guinea-Bissau was low, the current study pointed that the subpopulation from Cacheu region slightly differs from those in Gabú, Bafatá et Oio regions. Indeed, these three subpopulations are genetically close even though they come from geographically different locations. This similarity is shown by: *i*) the high genetic identity (from 0.9603 to 0.9017) of the three subpopulations while this value decreased to 0.8683 between Bafatá and Cacheu subpopulations, *ii*) the low genetic distances between the three subpopulations. The closest Nei's [30] unbiased measures between Bafatá and Gabú, and the farthest between Bafatá and Cacheu may be due not only to their geographical locations but also to the breeding systems, the presence of the livestock market in Bafatá and the cultural behavior of the breeders in the different regions.

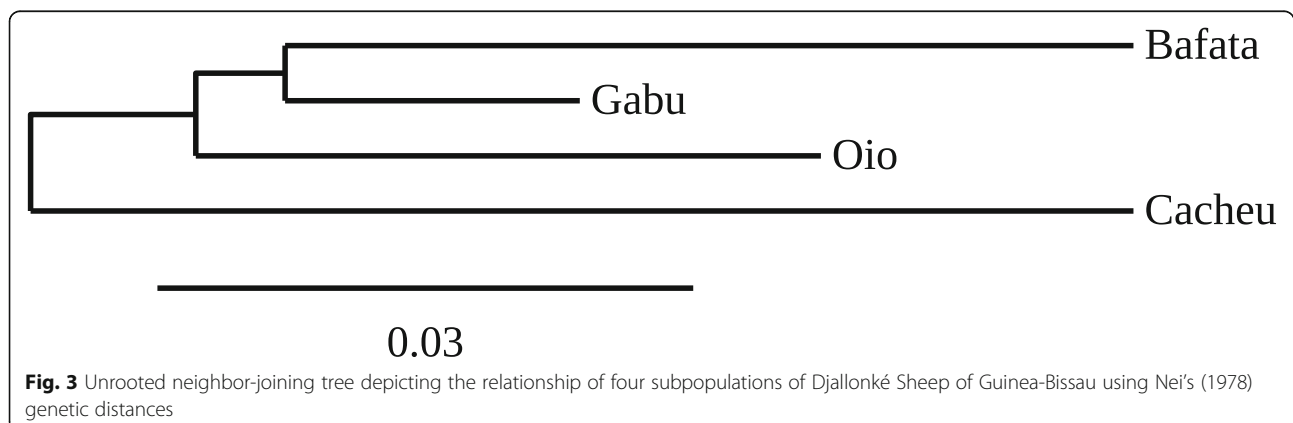


Fig. 3 Unrooted neighbor-joining tree depicting the relationship of four subpopulations of Djallonké Sheep of Guinea-Bissau using Nei's (1978) genetic distances

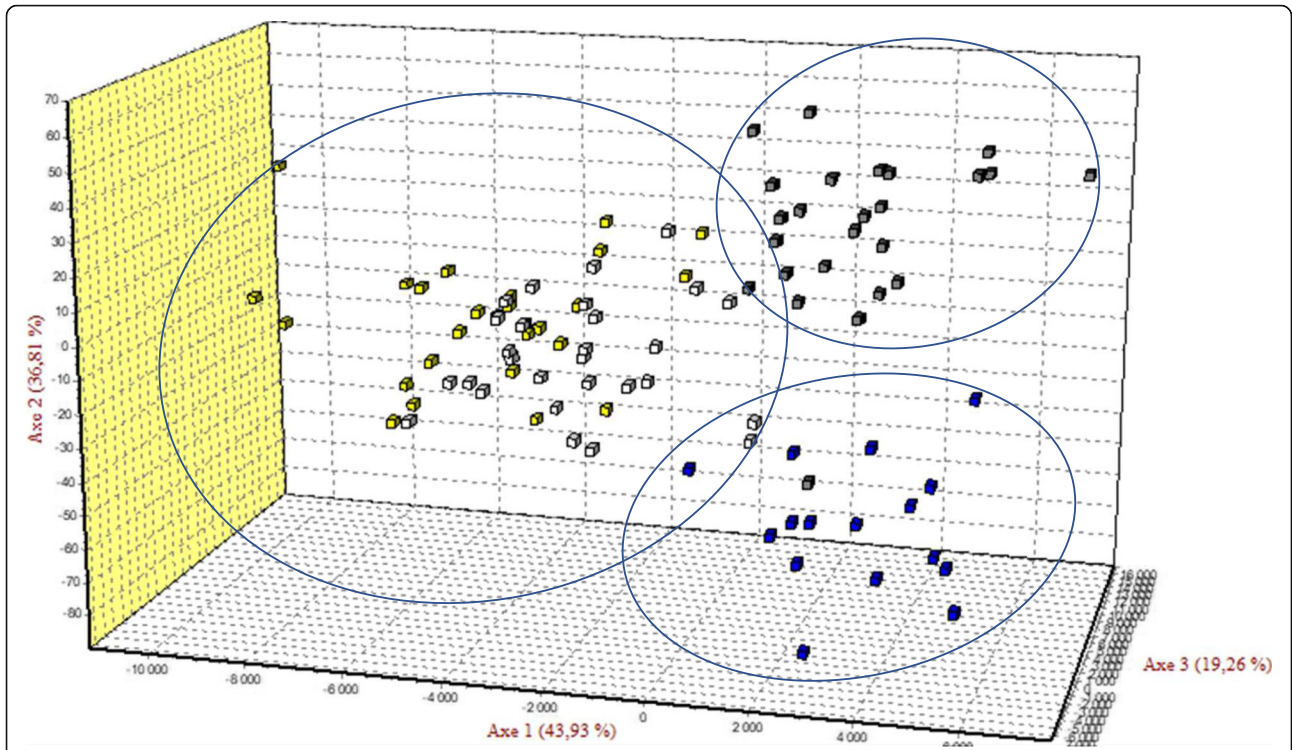


Fig. 4 Factorial correspondence analysis. Yellow: Bafatá; Blue: Cacheu; White: Gabú; Grey: Oio. Axis 1 isolated Gabú – Bafatá and Oio from Cacheu while Axis 2 delimited Oio and Cacheu

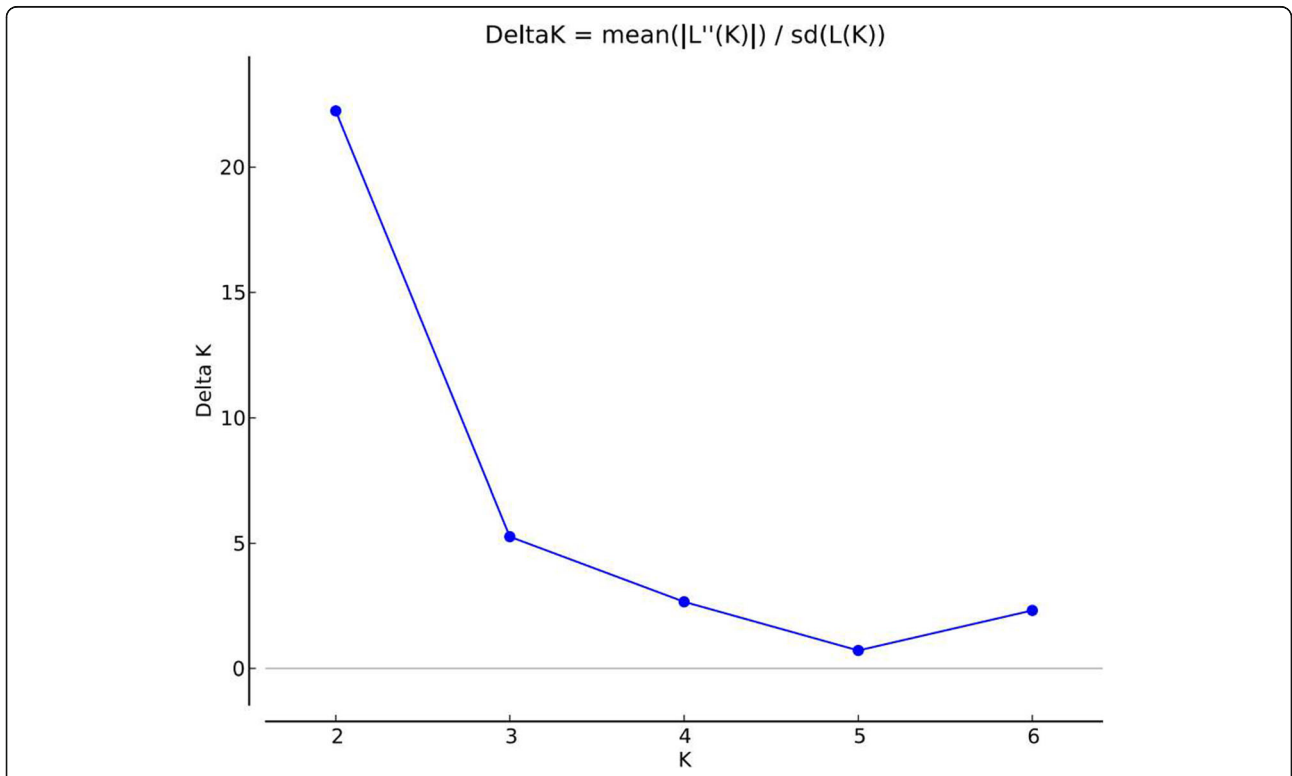
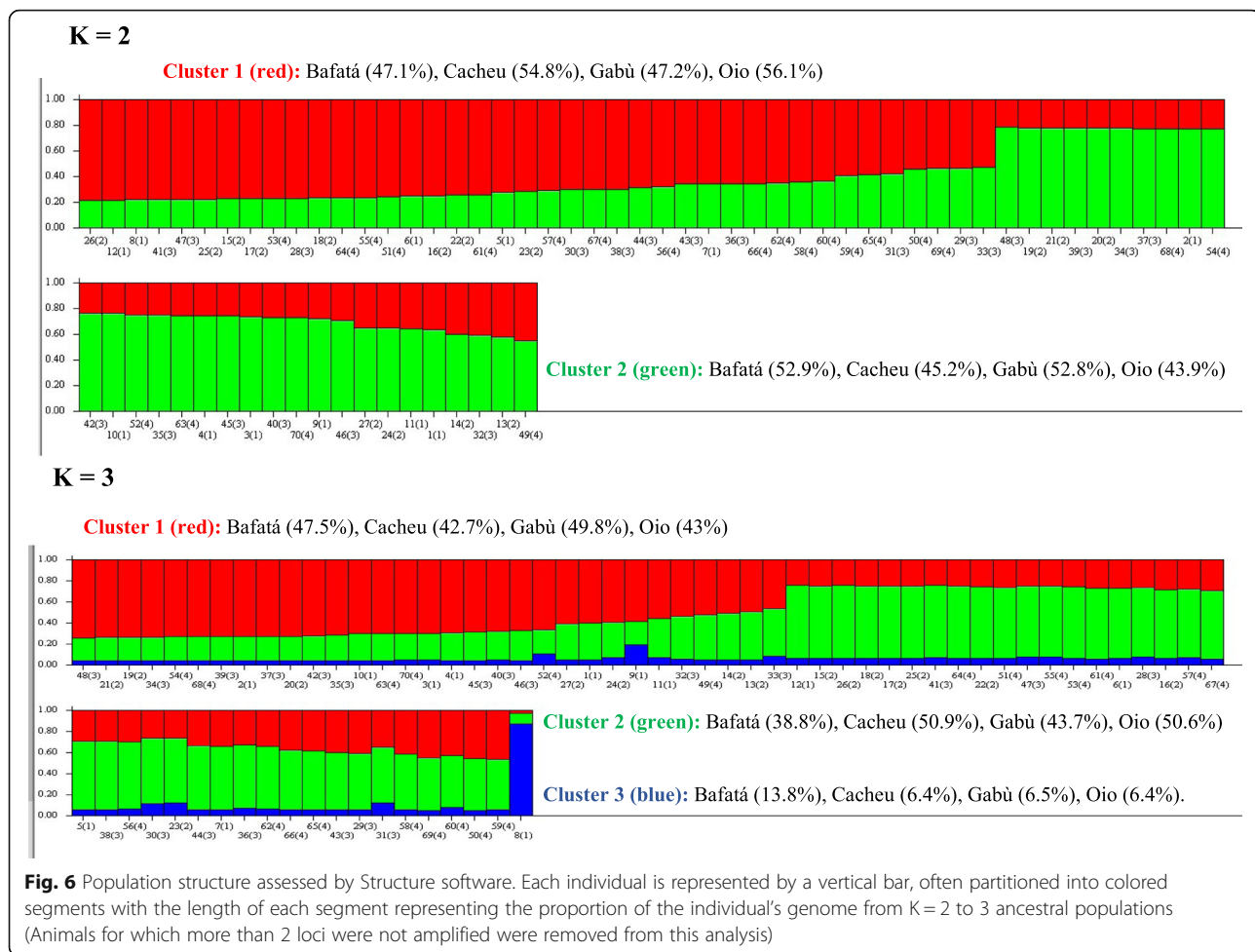


Fig. 5 Plots for detecting the number of K groups that best fit the data (Assumption: No Admixture Model and Independent Alleles frequencies)



Ira et al. [5] reported that Bafatá, Gabù and Oio regions had 95.88% of the sheep population of Guinea-Bissau and breeders practice transhumance breeding system, mixing cattle and sheep while in Cacheu region the breeding system is rather sedentary in association with agriculture (production of mangrove rice, sorghum, millet, beans, peanuts and cashew). The Bayesian approach implemented in STRUCTURE program detected the number of K that best fit the data between 2 and 3, suggesting an introgression of the Djallonké sheep of Guinea Bissau by an exotic sheep or the existence of “ecotypes”. The two subpopulations from the eastern regions (Gabù and Bafatá) were separated from the western subpopulations (Cacheu and Oio) at K = 2. The heterogeneity of the DS in Guinea-Bissau is shown with K = 3. The molecular study on DS population of Guinea-Bissau confirmed the results obtained from phenotypic study.

Further investigations extended to other regions of Guinea-Bissau and other sheep breeds are required to determine the origin of the admixture and the existence of ecotypes of Djallonké sheep in this country.

Conclusions

In this primary phenotypic characterization of the DS in Guinea-Bissau, three genetic types of animals were distinguished, namely the largest animals in Bafatá, the smallest animals in Cacheu and the type with intermediate traits of animals in Gabù and Ohio. The values of the quantitative characters of the sheep of the region of Bafatá were significantly higher than those of the other regions. The molecular study confirmed the existence of three genetic groups in the DS population in Guinea-Bissau that could be related more to breeding system than a genetic differentiation which was very low. The current study provides sufficient data that could be used to develop strategies for the sustainable and efficient management of animal genetic resources in general and specifically of sheep genetic resources in Guinea-Bissau. To complete the morphological and molecular characterization reported in the current study, it would be necessary to collect and analyze the demographic parameters and the zootechnical data of the DS population in Guinea-Bissau.

Methods

Study area and population

The study was conducted in four administrative regions which are the largest agro-pastoral areas in Guinea-Bissau: Bafatá, Gabú, Cacheu and Oio. These four regions cover two agro-ecological zones [31]:

- the North-East area comprising the regions of Gabú, Bafatá and Oio: characterized by a Sudanese climate with two distinct seasons: a dry season between November and May, and a rainy season from June to October. The annual rainfall ranges from 1200 to 1500 mm over an average of 107 days. The rate of evapotranspiration is 2507 mm and the annual average temperature is 27.4 °C. Most of the soil is tropical iron and iron. However, hydromorphic soils derived from marine alluvium are found in the shallows, basins of rivers and rivers. The vegetation consists of wooded savannahs and clear forests dotted with grasses that provide excellent natural grazing for animals. Livestock is dominated by ruminants and associated with the cultivation of maize, plains rice, sorghum, millet, cotton, groundnuts and cashew nuts. DS is the only sheep breed used in these regions. Animal breeding is practiced by ethnic Peulh populations and Mandingoes with Muslim religious dominance (5);

- the North-West area comprising the regions of Cacheu, Bissau and Biombo: moderately wet and warm Guinean maritime climate with 1500–1877 mm of average rainfall over 112 days. The average annual temperature is 26.6 °C and the evapotranspiration is 137 mm [31]. This area offers good opportunities for diversified agricultural production. The soils are sandy-clay and hydromorphic. The vegetation is made up of wooded savannahs and dense forests. Livestock is dominated by pigs and poultry. The reduced size herds of ruminants are also met. Ruminants and poultry are much more used for traditional rituals than for sale at the market. This system is practiced by animist populations such as Pepels, Balantes, Manjaques, Diolas, Mancanhes and Bijagós. The husbandry is associated with the cultivation of low-lying rice, sorghum, millet, groundnuts, sweet potatoes, cassava and cashew nuts.

Animals belonging to Djallonké Sheep breed, both adult males and females were included in the study. Data collection was carried out between April and October 2017.

Morphobiometric data (qualitative and quantitative traits) were collected through single visits (primary characterization) in the different herds. A total of 200 animals were chosen in the four administrative regions: 75 animals in the Bafatá region, 25 in the Cacheu region, 60 in the Gabú region and 40 in the Oio region. The herds were chosen after sensitization of the breeders and their agreement. In each herd,

the least related adult animals were chosen. Locations of the animal sampling have been included in Supplementary Fig. S1.

Description of animal morphological characters and body measurements

Body measurements (quantitative variables) concerned: (i) the Height at the Withers (HW), the Chest Depth (CD) and the Body Length (BL) using a sliding ruler; (ii) the Chest Girth (CG), Ear Length (EL), the Horn Length (HL), the Interval Length between the roots of the two Horns in males (ILH) measured between the roots of the two horns and the Tail Length (TL) were determined using a measurement tape. Body parameters measurements were taken early in the morning to avoid changing the animal's conformation after consuming water and food.

The morphological characteristics (qualitative variables) related to the sex of the animal (male / female), the type of melanin (eumelanin, pheomelanin, absence of pigment), the coat color pattern, the coat color, the ear orientation, the facial (chamfer) profile, the presence or absence of horns and the shape of the horns were described using visual criteria by simple observation of the interviewers following the elements of the guidelines developed for the study using the guidelines of the Food and Agriculture Organization for the phenotypic characterization of Animal Genetic Resources [7].

DNA extraction, polymerase chain reaction and fragment analysis

Blood samples were collected on 92 unrelated animals: 26 animals in the Bafatá region, 15 in the Cacheu region, 27 in the Gabú region and 24 in the Oio region. Farmers were interviewed in detail to ensure unrelatedness among the sampled individuals. About 5 ml of whole blood samples were collected after jugular venipuncture in EDTA coated vacutainer tubes. Genomic DNA was extracted using Commercial PROMEGA Wizard purification kit. A total of 12 microsatellite markers chosen among those recommended by the FAO-ISAG consortium [32] were used to genotype all the individuals (Table 8). The forward primer for each locus was labelled with one of the four fluorescent dyes FAM, VIC, NED and PET (Applied Biosystems, USA). Multiplexed polymerase chain reaction was performed with a total reaction volume of 12 µl containing 5 µl of mix primers of multiplex, 5 µl of mix of other reagents (Buffer, MgCl₂, Taq polymerase) and 2 µl of DNA. The following thermal conditions, 94 °C for 15 min, followed by 40 cycles of 94 °C for 30 s, specific annealing temperature (58 °C and 60 °C according to the multiplex) for 1 min 45 s

Table 8 Characteristics of the sheep microsatellite markers

Microsatellite	Primers	Sequences of primers	Nucleotide pattern	Number of chromosome	Hybridization temperature (°C)	Multiplex	Theoretical size
OarJMP58	Forward	GAAGTCATTGAGGGGTCG CTAACC	Di	OAR 26	58	1	145–169
	Reverse	CTTCATGTTACAGGACTTTCT CTG					
MAF214	Forward	GGGTGATCTTAGGGAGGTTT TTGGAGG	Di	OAR 16	58	2	174–282
	Reverse	AATGCAGGAGATCTGAGG CAGGGACG					
ILSTS5	Forward	GGAAGCAATGAAATCTATAG CC	Di	OAR 7	55	3	174–218
	Reverse	TGTTCTGTGAGTTTGAAGC					
MAF65	Forward	AAAGGCCAGAGATGCAA TTAGGAG	Di	OAR15	60	2	123–127
	Reverse	CCACTCCTCCTGAGAATATAAC ATG					
OarFCB193	Forward	TTCATCTCAGACTGGGATTCAG AAAGGC	Di	OAR 11	54	3	174–218
	Reverse	GCTTGAAATAACCCCTCTGCA TCCC					
OarFCB304	Forward	CCCTAGGAGCTTTCAATAAAGA ATCGG	Di	OAR 19	56	3	150–188
	Reverse	CGCTGCTGCAACTGGGT CAGGG					
ILSTS11	Forward	GCTTGCTACATGGAAAGTGC	Di	OAR 9	55	1	256–294
	Reverse	CTAAAATGCAGAGCCCTACC					
MCM140	Forward	GTTCTACTTCTGGGTACTGGT CTC	Di	OAR 6	60	1	167–193
	Reverse	GTCCATGGATTTGCAGAGTCAG					
SRCRSP1	Forward	TGCAAGAAGTTTTCCAGAGC	Di	OAR 13	54	1	116–148
	Reverse	ACCCTGGTTTCACAAAAGG					
OarCP34	Forward	GCTGAACAATGTGATATGTT CAGG	Di	OAR 3	50	4	112–130
	Reverse	GGGACAATACTGTCTTAGATGC TGC					
OarCB226	Forward	CTATATGTTGCCTTTCCCTTCC TGC	Di	OAR 2	60	3	119–153
	Reverse	GTGAGTCCCATAGAGCATAA GCTC					
MAF70	Forward	CACGGAGTCACAAAGAGT CAGACC	Di	OAR 4	60	4	124–166
	Reverse	GCAGGACTCTACGGGGCCTT TGC					

and 72 °C for 1 min 30 s and a final extension at 72 °C for 15 min was used for sample amplification by PCR. The amplified PCR products containing different dyes were then electrophoresed in four multiplexes (Table 8) in an automated DNA sequencer along with LIZ600 (Applied Biosystems, USA) as an internal lane control. The allele size data for each sample was generated using GENEMAPPER software version 5.

Data analysis

Morphological data analysis

The statistical analysis of the qualitative and quantitative data was done using R 3.5.1 software [33].

For qualitative data, frequencies and proportions were analyzed by region and sex using the Chi-square test.

Means, standard deviations and extreme values (minimum, maximum) were computed for all studied traits.

For the quantitative variables following the normal distribution, the comparisons of the means between regions or sexes were computed using parametric tests, in particular the one-way analysis of variance (ANOVA) while for those which did not follow the normal distribution, these means were compared using non-parametric tests (Kruskal-Wallis test, *KW*). Multivariate analysis (principal components analysis, PCA) was used to investigate morphological structure and quantify differences among subpopulations of DS from the four regions using the FactoMiner Package implemented in R software [34].

Genotypic data analysis

Allele numbers, allelic richness, the unbiased estimator of Wright's inbreeding coefficient F_{IS} , F_{IT} , F_{ST} calculated according to Weir and Cockerham [35] for each locus were determined using FSTAT software version 2.9.4 [36]. The rarefaction approach for the allelic richness estimation uses the frequency distribution of alleles at a locus to estimate the number of alleles that would occur in smaller samples of individuals. It is used to standardize \hat{A} to the smallest N in a comparison [37]. Additionally, observed and unbiased expected heterozygosities per locus as well as the factorial correspondence analysis (FCA) were estimated using GENETIX 4.03 (<http://www.genetix.univ-montp2.fr>). Departures from Hardy-Weinberg equilibrium over all loci were evaluated using Fisher's method implemented in Genepop v.4.7.2 [38]. The same software was used to perform the score test for Hardy-Weinberg equilibrium [39] per locus using a Markov chain algorithm with 10,000 dememorizations, 200 batches and 5000 iterations per batch. The Hardy-Weinberg equilibrium test measures the difference between the observed numbers of population genotypes and the theoretical genotypic numbers obtained with the Hardy-Weinberg relationship. The effective number of alleles (A_e) and the polymorphic information content (PIC) for each locus were analyzed by using Molkin v. 3.0 software [40]. The genetic identity and genetic distances were calculated using Popgene version 1.31 [41]. The unrooted neighbor-joining tree based on Nei's (1978) genetic distances was constructed using PHYLIP version 3.698 [42].

To assign individuals to K populations and estimate the posterior distribution of each individual's admixture coefficient, we used STRUCTURE software 2.3.4 [43] which is a model-based clustering method that utilizes a Monte Carlo Markov Chain. Because genotyping information for the putative parental populations was not available, we hypothesized k parental unknown populations (k varying from 1 to 8 with 10 replicated runs for each K). Analysis was performed with a burn in length of 50,000 followed by 100,000 Markov chain Monte Carlo iterations for each of K using uncorrelated allelic

frequencies between the parental populations and an admixture model.

The optimal ' K ' was identified based on ΔK , the second order rate of change in $\text{LnP}(D)$ following the likelihood procedure of Evanno et al. [9] using Structure Harvester (available at <http://taylor0.biology.ucla.edu/structureHarvester/>). Structure Harvester [44] is a web-based program for collating results generated by the STRUCTURE program to identify the best value of K . The program provides a fast way to assess and visualize likelihood values across multiple values of K and hundreds of iterations for easier detection of the number of genetic groups that best fit the data.

Abbreviations

A_e: Effective Allele Number; ANOVA: Analysis of variance; *AR*: Allelic Richness; *BL*: Body Length; *CD*: Chest Depth; *CG*: Chest Girth; *DNA*: Deoxyribonucleic acid; *DS*: Djallonké Sheep; *EL*: Ear Length; *FCA*: Factorial Correspondence Analysis; F_{IS} , F_{IT} , F_{ST} : F-Statistics indices; *H_o*: Observed heterozygosity; *H_e*: Expected heterozygosity; *HL*: Horn Length; *HW*: Height at the Withers; *HWE*: Hardy-Weinberg equilibrium; *ILH*: Interval Length between the roots of the two Horns in males; *PCA*: Principal components analysis; *PIC*: Polymorphism Information Content; *TL*: Tail Length

Supplementary Information

The online version contains supplementary material available at <https://doi.org/10.1186/s12863-021-01009-7>.

Additional file 1: Figure S1. Map (study area) of the origins of Djallonké sheep sub-populations.

Acknowledgements

We thank the entire PROGEVAL National Coordination team, all the Technical officers of the veterinary services and all the sheep breeders of Guinea-Bissau for their help, their agreement and their participation in this study. We also acknowledge Ms. KARAMBIRI Medina, Lecturer at the Centre Universitaire de Ziniaré/Université Joseph KI-ZERBO for her help to develop the Locations Map of the animal sampling.

Authors' contributions

DGK was in charge of the overall study including its design, sample collection, statistical analysis of morphological and molecular data, manuscript writing and coordinating the author contributions. HI and SMB had significant and equal contribution both to statistical analyses, the molecular analysis and manuscript writing. LA has contributed in morphological study design, data analysis and results interpretation. KM did the genotyping of animals. IM, DB, GJ have collaborated in the study design and sampling, SM, CB, YGCV have collaborated in study design and the review of the final draft of the paper. In addition, YGCV was involved in the coordination of the authors contribution. All authors read and approved the final manuscript.

Funding

This study was conducted as part of the Project titled "Projet de Valorisation des ressources génétiques animales et aquacoles locales dans l'espace UEMOA / Valorization project of local animal and aquatic genetic resources in the West African Economic and Monetary Union (PROGEVAL)" funded by the CORAF - UEMOA Agreement. Mr. Mamadou IRA and Ms. Awa LINGUELEGUE, co-authors of the article, were PhD and engineering graduate students on the Project. We extend our sincere thanks to these technical and financial partners. The funders had no role in study design, data collection and analysis, decision to publish, or preparation of the manuscript.

Availability of data and materials

The datasets used and analyzed during the present study are available from the corresponding author on reasonable request. All data used have also been published on. [Preview of Morphological and SSR_Genetic data_Djallonke_Sheep - Mendeley Data](#) (<https://data.mendeley.com/v1/datasets/p2z3z3sxdg/draft?preview=1>).

DOI: <https://doi.org/10.17632/p2z3z3sxdg.2>

Declarations

Ethics approval and consent to participate

The research protocol was approved by the Institutional Ethics Committee under Number 003–2017/CE-CIRDES (Centre International de Recherche-Développement sur l'Élevage en zone Subhumide). All sheep owners were aware of the planned research and gave their consent for phenotypic data and blood samples collection from their sheep.

"We confirm that all methods were performed in accordance with the relevant guidelines and regulations".

In addition to this, informed consent was obtained from all farmers/subjects involved in this study".

Consent for publication

Not applicable.

Competing interests

The authors declare that they have no competing interests.

Author details

¹Centre International de Recherche-Développement sur l'Élevage en zone Subhumide (CIRDES), Bobo-Dioulasso 01 BP 454, Burkina Faso. ²Institut du Sahel (INSAH/CILSS), BP 1530 Bamako, Mali. ³Current address: Centre for Tropical Livestock Genetics and Health (CTLGH), Roslin Institute, University of Edinburgh, Edinburgh, UK. ⁴Université Nazi BONI (UNB), Bobo-Dioulasso 01 BP 1091, Burkina Faso. ⁵Direction Générale de l'Élevage (DGE), BP 26 Bissau, Guinée-Bissau.

Received: 25 February 2021 Accepted: 1 November 2021

Published online: 07 January 2022

References

- Herrero M, Havlik P, Mcintire J, Palazzo A, Valin H. L'avenir de l'élevage africain : Réaliser le potentiel de l'élevage pour la sécurité alimentaire, la réduction de la pauvreté et la protection de l'environnement en Afrique sub-saharienne. Genève: Bureau du représentant spécial des Nations Unies pour la sécurité alimentaire et nutritionnelle et du Coordonnateur du système des Nations Unies contre la grippe (UNSIC); 2014. p. 118.
- Akakpo K, Lero P, Mendes D, Silva BV. Guinée-Bissau : Résultats de l'enquête approfondie sur la sécurité alimentaire et la vulnérabilité des ménages ruraux (rapport final). Rome: Programme Alimentaire Mondial, Service de l'Analyse de la Sécurité Alimentaire (VAM); 2011. p. 80. https://reliefweb.int/sites/reliefweb.int/files/resources/Rapport_complet_77.pdf
- DGE. Lettre de Politique de Développement de l'Élevage de la Guinée-Bissau; 2010. p. 57.
- Correia F. Revue des filières bétail/viande et lait et des politiques qui les influencent en Guinée-Bissau. FAO. Editeurs : Niang M, Salla A, Bedane B, Rome : FAO et CEDEAO. 2016. 52. Disponible sur <http://www.fao.org/3/a-i5267f.pdf>
- Ira M, Dayo G-K, Sangaré M, Djassi B, Gomes J, Cassama B, et al. Etat des lieux de la caractérisation des ressources génétiques animales et aquacoles en Guinée-Bissau et perspectives de valorisation. Int J Adv Res. 2018;6(12): 12–23. <https://doi.org/10.21474/IJAR01/8109>.
- FAO. Plan d'action mondial pour les ressources zoogénétiques et la déclaration d'Interlaken. Rome: FAO; 2007. p. 52. <http://www.fao.org/3/a1404f/a1404f00.pdf>
- FAO. Phenotypic characterization of animal genetic resources. Rome: FAO Animal Production and Health Guidelines No. 11; 2012. p. 142.
- DGE. Rapport national sur l'état des ressources génétiques de l'élevage. Bissau: Ministère de 486 l'agriculture, des forêts, de la chasse et de l'élevage; 2002. p. 42.
- Evanno G, Regnaut S, Goudet J. Detecting the number of clusters of individuals using the software STRUCTURE: a simulation study. Mol Ecol. 2005;14(8):2611–20. <https://doi.org/10.1111/j.1365-294X.2005.02553.x>.
- OIE. Rapport d'évaluation PVS/OIE de la Guinée - Bissau, Version I; 2008. p. 124. http://www.oie.int/fileadmin/Home/eng/Support_to_OIE_Members/docs/pdf/Guinee-Bissau_OIE-PVS_300708.pdf
- MADR. Guides sur les bonnes pratiques en matière de gestion de pâturages et de corridors de transhumance en Guinée-Bissau (GSPCT), Guinée-Bissau, vol. 16; 2013. Disponible sur http://www.gw.undp.org/content/dam/guinea_bissau/docs/environment/UNDP_GW_Bonnes_Pratiques_gestion_paturages.pdf
- DGE. Rapport de synthèse du recensement national de l'élevage en Guinée-Bissau (rapport de synthèse). Guinée-Bissau; 2009. p. 30.
- N'goran KE, Kouadja GS, Kouassi NC, Loukou NE, Eka JY, Dayo G-K, et al. Primary morphological characterization of west African dwarf (Djallonké) ewes from Côte d'Ivoire based on qualitative and quantitative traits. Int J Genet Mol Biol. 2019;11(2):16–28. <https://doi.org/10.5897/IJGMB2019.0170>.
- Ndiaye B. Caractérisation phénotypique et génétique du mouton Peul-peul du Sénégal, vol. 201947. Dakar: Thèse de Doctorat, Université Cheikh Anta Diop de Dakar; 2020. p. 132.
- Dayo G-K, Alfa E, Talaki E, Soedji K, Sylla S, Dao B. Caractérisation phénotypique du mouton Vogan du Togo et relation avec le mouton Djallonké et le mouton sahélien. Animal Genetic Resources. 2015;56:63–78. <https://doi.org/10.1017/S207863361500003X>.
- Baenyi P, Meutchieye F, Ayagirwe BR, Bwihangane BA, Karume K, Mushagalusa NG, et al. Biodiversity of indigenous Djallonké sheep (*Ovis aries*) in Sudano Guinean region in Cameroon. Genet Biodiversity J. 2018; 2(2):1–10.
- Traore A, Tamboura H, Kabore A, Yameogo N, Bayala B, Zare I. Caractérisation morphologique des petits ruminants (ovins et caprins) de race locale "Mossi" au Burkina Faso. AGRI. 2006;39:39–50. <https://doi.org/10.017/S1014233900002121>.
- Sangaré M. Synthèse des résultats acquis sur l'élevage des petits ruminants dans les systèmes de production animale d'Afrique de l'ouest. In: CIRDES éditions. Document de synthèse du Programme concerté de recherche-développement sur l'élevage en Afrique de l'ouest. Bobo-Dioulasso; 2005. p. 163.
- Gueye A. Moutons et Chèvres du Sénégal : Caractérisation morphométrique et typage sanguin. Thèse de docteur vétérinaire. Sénégal: Université Cheikh Anta Diop de Dakar; 1997. p. 78.
- Birteeb PT, Peters SO, Ozoje MO. Analysis of the body structure of Djallonké sheep using a multideterminant approach. Animal Genet Resources. 2014; 54:65–72. <https://doi.org/10.1017/S2078633614000125>.
- Asamoah-Boaheng M, Sam KE. Morphological characterization of breeds of sheep: a discriminant analysis approach. SpringerPlus. 2016;5(1):69. <https://doi.org/10.1186/s40064-016-1669-8>.
- Hadzi YN. Les populations de bétail présentes au Togo. Animal Genetic Resources. 1996;17:35–49. <https://doi.org/10.1017/S1014233900000560>.
- Epstein H. The origin of the domestic animals of Africa, vol. 1. New York: Africana Publishing Corporation; 1971.
- Lebbie SHB, Ramsay K. A perspective on conservation and management of small ruminant genetic resources in the sub-Saharan Africa. Small Rumin Res. 1999;34(3):231–47. [https://doi.org/10.1016/S0921-4488\(99\)00076-0](https://doi.org/10.1016/S0921-4488(99)00076-0).
- Gbangboche A, Hornick J-L, Adamou-N'diaye M, Eodor AP, Farnir F, Abiola F, et al. Caractérisation et maîtrise des paramètres de la reproduction et de la croissance des ovins Djallonké (*Ovis aries*). Ann Med Vet. 2005;149:148–60.
- Agaviezor BO, Peters SO, Adefenwa MA, Yakubu A, Adebambo OA, Ozoje MO, et al. Morphological and microsatellite DNA diversity of Nigerian indigenous sheep. J Animal Sci Biotechnol. 2012;3(1):38. <https://doi.org/10.1186/2049-1891-3-38>.
- Melesse A, Banerjee S, Lakew A, Mersha F, Hailemariam F, Tsegaye S, et al. Morphological characterization of indigenous sheep in southern regional state, Ethiopia. Animal Genet Resources. 2013;52:39–50. <https://doi.org/10.1017/S2078633612000513>.
- Ndiaye B, Diouf MN, Ciss M, Wane M, Diop M, Sembène M. Morphologie et pratiques d'élevage du mouton Peul-peul du Sénégal. Int J Adv Res. 2018; 6(5):727–38. <https://doi.org/10.21474/IJAR01/7089>.
- Wafula PO, Jianlin H, Sangare N, Sowe JM, Coly R, Diallo B, et al. Genetic characterization of west African Djallonké sheep using microsatellite markers. Turin: The Role of Biotechnology, Villa Gualino; 2005.

30. Nei M. Estimation of average heterozygosity and genetic distance from a small number of individuals. *Genetics*. 1978;89(3):583–90. <https://doi.org/10.1093/genetics/89.3.583>.
31. FAO-AQUASTAT. Guinée-Bissau. In : L'irrigation en Afrique en chiffres, enquêtes. Rome; 2005. p. 279–86. <http://www.fao.org/3/a-a0232f.pdf>
32. FAO. Molecular genetic characterization of animal genetic resources. FAO Animal Production and Health Guidelines. No. 9. Rome. 2011.
33. R Core Team. R: A language and environment for statistical computing. Vienna: R Foundation for Statistical Computing; 2018. <https://www.R-project.org/>
34. Husson F, Josse J, Le S, Mazet J. Facto-MineR multivariate exploratory data analysis and data mining with R. R package version 1.26. 2014. http://factominer.free.fr/factomethods/index_fr.html
35. Weir BS, Cockerham C. 1984. Estimating F-statistics for the analysis of population structure. *Evolution*. 1984;38(6):1358–70. <https://doi.org/10.1111/j.1558-5646.1984.tb05657.x>.
36. Goudet J. FSTAT. A program to estimate and test gene diversities and fixation indices (version 2.9.4). 2003. Available on: <http://www2.unil.ch/popgen/softwares/fstat.htm>.
37. Petit RJ, El Mousadik A, Pons O. Identifying populations for conservation on the basis of genetic markers. *Conserv Biol*. 1998;12(4):844–55. <https://doi.org/10.1046/j.1523-1739.1998.96489.x>.
38. Rousset F. Genepop'007: a complete reimplementation of the Genepop software for windows and Linux. *Mol Ecol Resources*. 2008;8(1):103–6. <https://doi.org/10.1111/j.1471-8286.2007.01931.x>.
39. Raymond M, Rousset F. GENEPOP. Population genetics software and ecumenicism, <http://wbiomed.curtin.edu.au/genepop/>. *J Hered*. 1995;86(3): 248–9. <https://doi.org/10.1093/oxfordjournals.jhered.a111573>.
40. Gutiérrez JP, Royo LJ, Álvarez I, Goyache F. MolKin v2.0: a computer program for genetic analysis of populations using molecular coancestry information. *J Hered*. 2005;96(6):718–21. <https://doi.org/10.1093/jhered/esi118>.
41. Yeh FC, Yang R-C, Boyle T. POPGENE Version 1.31. Microsoft windows-based freeware for population genetics analysis. 1999. <ftp://ftp.microsoft.com/Softlib/MSLFILES/HPGLEXE>.
42. Felsenstein J. PHYLIP (Phylogeny Inference Package) version 3.698. Seattle: Department of Genome Sciences, University of Washington; 2009.
43. Pritchard JK, Stephens M, Donnelly P. Inference of population structure using multilocus genotype data. *Genetics*. 2000;155(2):945–59. <https://doi.org/10.1093/genetics/155.2.945>.
44. Earl DA, Vonholdt BM. STRUCTURE HARVESTER: a program for visualizing STRUCTURE output and implementing the Evanno method. *Conserv Genet Resour*. 2012;4(2):359–61. <https://doi.org/10.1007/s12686-011-9548-7>.

Publisher's Note

Springer Nature remains neutral with regard to jurisdictional claims in published maps and institutional affiliations.

Ready to submit your research? Choose BMC and benefit from:

- fast, convenient online submission
- thorough peer review by experienced researchers in your field
- rapid publication on acceptance
- support for research data, including large and complex data types
- gold Open Access which fosters wider collaboration and increased citations
- maximum visibility for your research: over 100M website views per year

At BMC, research is always in progress.

Learn more biomedcentral.com/submissions

