



THE UNIVERSITY *of* EDINBURGH

Edinburgh Research Explorer

MicroRNA-122 and cytokeratin-18 have potential as a biomarkers of drug-induced liver injury in European and African patients on treatment for mycobacterial infection

Citation for published version:

Rupprechter, SAE, Sloan, DJ, Oosthuyzen, W, Bachmann, TT, Hill, AT, Dhaliwal, K, Templeton, K, Matovu, J, Sekaggya-Wiltshire, C & Dear, JW 2021, 'MicroRNA-122 and cytokeratin-18 have potential as a biomarkers of drug-induced liver injury in European and African patients on treatment for mycobacterial infection', *British Journal of Clinical Pharmacology*. <https://doi.org/10.1111/bcp.14736>

Digital Object Identifier (DOI):

[10.1111/bcp.14736](https://doi.org/10.1111/bcp.14736)

Link:

[Link to publication record in Edinburgh Research Explorer](#)

Document Version:

Peer reviewed version

Published In:

British Journal of Clinical Pharmacology

General rights

Copyright for the publications made accessible via the Edinburgh Research Explorer is retained by the author(s) and / or other copyright owners and it is a condition of accessing these publications that users recognise and abide by the legal requirements associated with these rights.

Take down policy

The University of Edinburgh has made every reasonable effort to ensure that Edinburgh Research Explorer content complies with UK legislation. If you believe that the public display of this file breaches copyright please contact openaccess@ed.ac.uk providing details, and we will remove access to the work immediately and investigate your claim.



Title: MicroRNA-122 and cytokeratin-18 have potential as a biomarkers of drug-induced liver injury in European and African patients on treatment for mycobacterial infection

Running Title: MiR-122 and K18 in tuberculosis treatment

Keywords: cytokeratin-18, K18, microRNA-122, miR-122, drug-induced liver injury, tuberculosis

Authors: Sarah AE Rupprechter¹, Derek J Sloan², Wilna Oosthuyzen¹, Till T Bachmann³, Adam T Hill⁴, Kevin Dhaliwal⁴, Kate Templeton³, Joshua Matovu⁵, Christine Sekaggya-Wiltshire⁵ & James W Dear¹.

1. Pharmacology, Therapeutics and Toxicology, Centre for Cardiovascular Science, University of Edinburgh, The Queen's Medical Research Institute, 47 Little France Crescent, Edinburgh, EH16 4TJ
2. School of Medicine, University of St Andrews, North Haugh, St Andrews, KY16 9TF
3. Edinburgh University/Infection Medicine, Chancellor's Building, 49 Little France Crescent, Edinburgh, EH16 4SB
4. Edinburgh University/Centre for Inflammation Research, The Queen's Medical Research Institute, 47 Little France Crescent, Edinburgh, EH16 4TJ
5. Infectious Diseases Institute, Makerere University College of Health Sciences, Kampala, Uganda.

Corresponding author: James W. Dear
University/BHF Centre for Cardiovascular Science
University of Edinburgh
The Queen's Medical Research Institute
47 Little France Crescent
Edinburgh
EH16 4TJ
james.dear@ed.ac.uk
(+44) 0131 242 9216

Abstract:

Aim

Patients on anti-tuberculosis (anti-TB) therapy are at risk of drug-induced liver injury (DILI). MicroRNA-122 (miR-122) and cytokeratin-18 (K18) are DILI biomarkers. To explore their utility in this global context, circulating miR-122 and K18 were measured in UK and Ugandan populations on anti-TB therapy for mycobacterial infection.

Methods

Healthy subjects and patients receiving anti-TB therapy were recruited at the Royal Infirmary of Edinburgh, UK (ALISTER-ClinicalTrials.gov Identifier: NCT03211208). African patients with HIV-TB coinfection were recruited at the Infectious Diseases Institute, Kampala, Uganda (SAEFRIF-NCT03982277). Serial blood samples, demographic and clinical data were collected. In ALISTER samples, MiR-122 was quantified using PCR. In ALISTER and SAEFRIF samples, K18 was quantified by ELISA.

Results

The study had 235 participants (healthy volunteers (n=28); ALISTER: active TB (n=30), latent TB (n=88), non-tuberculous mycobacterial infection (n=25); SAEFRIF: HIV-TB coinfection (n=64)). In the absence of DILI, there was no difference in miR-122 and K18 across the groups. Both miR-122 and K18 correlated with alanine transaminase activity (ALT) (miR-122:r=0.52,95%CI=0.42-0.61,P<0.0001. K18:r=0.42,95%CI=0.34-0.49,P<0.0001). miR-122 distinguished those patients with ALT>50U/L with higher sensitivity/specificity than K18. There were two DILI cases: baseline ALT,18 and 28 IU/L, peak ALT 431 and 194 IU/L; baseline K18, 58 and 219 U/L, peak K18 1247 and 3490 U/L; baseline miR-122 4 and 17 fM, peak miR-122 60 and 336 fM, respectively.

Conclusion

In patients treated with anti-TB therapy miR-122 and K18 correlated with ALT and increased with DILI. Further work should determine their diagnostic and prognostic utility in this global context-of-use.

What is already known about this subject:

- Drug induced liver injury (DILI) is a major concern in the treatment of tuberculosis (TB).
- There are new biomarkers for DILI (microRNA-122 and cytokeratin-18) which have the potential to add value because of enhanced specificity/sensitivity compared to current tests.
- These mechanistically informative DILI biomarkers have qualifying data from large USA and European studies. However, these markers have not been tested in Africa. Given the global burden of TB our aim was to explore biomarker utility in this global context of use.

What this study adds:

- The baseline concentrations of cytokeratin-18 did not substantially differ across UK and Ugandan populations on treatment for TB and HIV. miR-122 did not differ across healthy subjects and UK patients treated for mycobacterial infection.
- These biomarkers significantly correlated with alanine transaminase activity (current liver injury marker) and were elevated with DILI. miR-122 distinguished those patients with ALT>50U/L with higher sensitivity/specificity than K18.
- MicroRNA-122 and cytokeratin-18 have potential in this context-of-use and should be taken forward into larger studies which could provide data for formal qualification.

Introduction:

Tuberculosis (TB) is in the top 10 global causes of death, with an estimated 10 million new cases, 1.2 million deaths among HIV-negative individuals and 251,000 deaths among HIV-positive individuals in 2018 (World Health Organization (WHO), 2019). The global burden of TB is unequally distributed, disproportionately affecting low- and middle-income countries particularly in Africa and Asia. One of the barriers to the effective treatment of TB are the adverse drug reactions experienced by patients on anti-TB medications, with one of the most common being drug-induced liver injury (DILI) (Saukkonen *et al.*, 2006). Three of the four first line drugs used in the treatment of TB - isoniazid, rifampicin and pyrazinamide - are potentially hepatotoxic (Girling, 1977). The estimate of the incidence of DILI in individuals undergoing anti-TB treatment for active TB varies from 2 to 33% depending on the cohort studied, drug regimen used, monitoring and reporting practices (Saukkonen *et al.*, 2006; Tostmann *et al.*, 2008; Ramappa and Aithal, 2013). Individuals who experience DILI often need to stop treatment and, if clinically indicated, recommence once liver function tests (LFTs) return to normal. However, for some individuals re-exposure to the same drugs leads to reoccurrence of DILI (Metushi, Uetrecht and Phillips, 2016), and for others liver injury progresses even after treatment has stopped (Hassan *et al.*, 2015). Therefore, there is an unmet clinical need for new tools to improve the safety of this essential antimicrobial treatment.

Diagnosis of DILI relies on LFTs, with alanine aminotransferase (ALT) activity considered one of the gold standards for determining liver injury. The DILI Expert Working Group defines DILI as $\geq 3 \times$ upper limit of normal (ULN) of ALT in the presence of symptoms, or $\geq 5 \times$ ULN ALT in the absence of symptoms (Aithal *et al.*, 2011). Although ALT is currently the gold standard for determining DILI there are issues associated with its use. ALT is not specific to the liver and can provide false positive results, with elevations in ALT occurring after muscular damage following exercise (Pettersson *et al.*, 2008) or subsequent to a myocardial infarction (LaDue and Wroblewski, 1955). Furthermore, elevations in ALT are not specific to DILI (Senior, 2012) and can occur due to metabolic perturbations (Hanley *et al.*, 2004; Sattar *et al.*, 2004). In paracetamol-overdose DILI there is a delay between insult to the liver and rise in ALT (Antoine and Dear, 2016), meaning ALT is not optimal as a biomarker of DILI in this context. To address these

challenges recent work has identified novel biomarkers capable of diagnosing, and in some cases predicting DILI.

MicroRNAs (miRNAs) are small non-coding RNAs which regulate post-transcriptional gene expression. MiR-122 is a 22-nucleotide microRNA which is highly expressed in, and highly specific for, the liver, with little to no expression in other tissues. In liver injury, miR-122 is released from necrotic hepatocytes, resulting in elevated miR-122 concentrations in the bloodstream (Wang *et al.*, 2009). Cytokeratin-18 (K18) is an intermediate filament protein responsible for maintaining the cytoskeletal structure in the liver and other epithelial cells and is reported to make up 5% of the liver's total protein content (Adebayo, Mookerjee and Jalan, 2012). K18 is a mechanistic biomarker of liver injury, providing information on the pattern of cell death. In apoptosis, the release of a caspase-cleaved form of K18 (cc-K18) is an early event during cellular structural rearrangement (Caulín, Salvesen and Oshima, 1997). Whereas, in necrosis, the full-length form of K18 (FL-K18) is passively released upon cell death (Caulín, Salvesen and Oshima, 1997). MiR-122 and K18 are able to predict DILI in patients who overdose on paracetamol earlier than standard LFTs (Antoine *et al.*, 2013; Dear *et al.*, 2018) and provides enhanced hepatic specificity over other biomarkers (Vliegenthart *et al.*, 2015). Both novel biomarkers have regulatory support from the US FDA as biomarkers for DILI (Food and Drug Administration Centre for Drug Evaluation and Research, 2016), although to date their development has been largely limited to testing in Western populations.

The aim of this study was to explore the properties of miR-122 and K18 in relevant European and African patients with mycobacterial infection (with and without HIV co-infection). Specifically, our aims were to determine whether the infective disease process and routine management with anti-TB medicines affect these biomarkers in the absence of DILI and to characterise how miR-122 and K18 change in relation to ALT and in cases of DILI.

Methods:

Participants with active TB, latent TB and non-tuberculous mycobacterial (NTM) infection were recruited into the “Assessing Antibiotic-Induced Liver Injury for the Stratification of Tuberculosis Patients” (ALISTER) clinical study at the Royal Infirmary, Edinburgh (ClinicalTrials.gov Identifier: NCT03211208). Participants with HIV-TB coinfection were recruited into the “Safety and Efficacy of High Dose Rifampicin in Tuberculosis (TB)-HIV Co-infected Patients on Efavirenz- or Dolutegravir-based Antiretroviral Therapy” (SAEFRIF) clinical trial at the Infectious Disease Institute, Kampala, Uganda (ClinicalTrials.gov Identifier: NCT03982277).

Healthy subjects:

As a control group to test whether circulating miR-122 and K18 were affected by active TB, latent TB or non-tuberculous mycobacterial infection, adults with no medical complaints and no medication use were recruited and blood was drawn with informed consent.

ALISTER clinical study:

Participants were recruited at the Royal Infirmary of Edinburgh. Adults (≥ 16 years, ≤ 85 years), receiving treatment for active or latent TB, or NTM infection were included. Patients were excluded if they did not have the capacity to provide informed consent or were known to be HIV positive. Full written informed consent was obtained from every participant and the study was approved by the West of Scotland Research Ethics Committee.

Patients were classified as having active TB either if they had culture confirmation of *M. tuberculosis* and presence of active disease, or if a clinician decided there was sufficient evidence of active disease to start them on treatment. Latent TB patients had a positive interferon-gamma release assay (IGRA) and no evidence of active disease. Patients with NTM infection had grown at least 2 cultures with non-tuberculous mycobacterium and had clinical signs of pulmonary disease (Griffith *et al.*, 2007; Haworth *et al.*, 2017).

Active and latent TB patients were treated following WHO guidelines (World Health Organization (WHO), 2017, 2018). Patients with susceptible active TB were treated with

isoniazid, rifampicin, ethambutol and pyrazinamide for an initiation phase of 2 months, followed by rifampicin and isoniazid for a continuation phase of 4 months (World Health Organization (WHO), 2017). Patients with latent TB were treated with either a combination of isoniazid and rifampicin for 3 months, or isoniazid or rifampicin alone for 6 months (World Health Organization (WHO), 2018). Patients with *M. avium* complex (MAC) infection were treated with the recommended regimen of rifampicin, ethambutol and clarithromycin for 2 years (Haworth *et al.*, 2017). Dependent on the NTM species, disease severity, resistance profile of the infection and tolerance of the individual, drugs were replaced or added, including isoniazid, moxifloxacin, azithromycin and amikacin (Griffith *et al.*, 2007; Haworth *et al.*, 2017).

SAEFRIF clinical trial:

The “Safety and Efficacy of High Dose Rifampicin in Tuberculosis (TB)-HIV Co-infected Patients on Efavirenz- or Dolutegravir-based Antiretroviral Therapy” (SAEFRIF) clinical trial (NCT03982277) was performed at the Infectious Disease Institute at Makerere University, Uganda. The data presented in this paper provide preliminary data on liver safety from 64 trial participants. A full report on pre-defined study end-points will be provided on trial completion. Ethical approval for this study was sought from Joint Clinical Research Council (JCRC) ethics committee, the National Drug Authority (NDA) and the Uganda National Council for Science and Technology (UNCST). All participants signed an informed consent form prior to study enrolment.

Inclusion criteria were HIV-infected patients aged ≥ 18 years who were due to initiate rifampicin-containing therapy for newly diagnosed active TB, and were either already taking or planning to start efavirenz (EFV)-based or dolutegravir (DTG)-based ART. Exclusion criteria were patients who have rifampicin resistant TB, pregnant women, women of reproductive age on DTG who decline the use of effective contraceptive, patients with liver disease, ALT > 5 ULN or glomerular filtration rate < 50 ml/min.

The trial protocol is described in Nabisere *et al.*, 2020. Patients were randomised to one of 4 arms of the trial for the first 2 months of treatment, either the standard (10 mg/kg) or high dose (35 mg/kg) rifampicin alongside standard doses of the other first line TB drugs and either EFV- or DTG-based ART. Baseline blood samples (serum) were collected at baseline and weeks 2, 4, 6, and 8 of treatment.

Data and blood samples:

For the ALISTER study and SAEFRIF trial demographic and clinical data from the participants were recorded from medical records and clinical trial records. Liver function test results (ALT) were recorded from each clinic visit. Blood samples were collected at first clinic visit and subsequent clinic visits. Once collected blood was processed by centrifugation, then the supernatant was aliquoted and stored at -80°C.

Quantification of miR-122:

Serum samples were stored at -80°C before analysis. Freeze-thaw cycles were avoided to preserve miRNA integrity. MiR-122 was quantified in samples from healthy volunteers and the ALISTER study. miR-122 could only be measured in Edinburgh. Due to the global COVID pandemic and the HIV positive status of the SAEFRIF samples these could not be shipped and miR-122 was not measured. All ALISTER samples were stored for a maximum of one year (median [IQR]: 16.3 [7.6-33.3] weeks). This is less time in storage than previously published studies which have demonstrated miRNA stability (Balzano *et al.*, 2015; Shaughnessy *et al.*, 2015). MiRNA was extracted using the miRNeasy Serum/Plasma kit (Qiagen, Venlo, Netherlands) following the manufacturer's instructions. Total RNA was extracted from 50 µL diluted in 150 µL nuclease free water. Briefly, RNA was extracted from the serum by lysis reagent (1000 µL) and chloroform (200 µL). After centrifugation at 12000xg for 15 min at 4°C up to 600 µL of the aqueous phase was transferred to a new tube with 900 µL absolute ethanol. RNA was purified on a RNeasy minElute spin column and eluted in 15 µL RNase-free water and stored at -80°C. Extraction efficiency was monitored by adding 5.6×10^8 copies of synthetic *C. elegans* miR-39 spike-in control after the addition of lysis reagent before the addition of chloroform and phase separation. The miScript II Reverse Transcription kit was used to prepare cDNA according to the manufacturer's instructions. Briefly, 2.5 µL of RNA eluate was reverse transcribed into cDNA. The synthesised cDNA was diluted and used for cDNA template in combination with the miScript SYBR Green PCR kit (Qiagen, Venlo, The Netherlands) using the specific miScript assays (Qiagen, Venlo, The Netherlands). RT-PCR was performed in duplicate on a Light Cycler 480 (Roche, Burgess Hill, UK) using the recommended miScript cycling parameters. In this study, miR-122 was quantified in fM by generating a standard curve. Serial dilutions of known standard were made using

synthetic miR-122 (syn hsa-miR-122-5p, 219600, Qiagen). The dilutions were prepared in triplicate, using the same RT and PCR protocol as described above. The Ct values were plotted against the logarithm of the concentration, demonstrating a clear linear relationship between Ct value and Log (conc.). The Ct (cycle threshold) is defined as the number of PCR cycles required for the fluorescent signal to cross the threshold (exceed background level). The resultant regression line was used to ascertain the concentration of miR-122 present in the samples. Acceptable repeatability was demonstrated by measuring the intra-assay variability of miR-122 duplicates (Karlen *et al.*, 2007) and expressed as concentration (fM) per MIQE guidelines (Bustin *et al.*, 2009), (CV: 0.25%, [0.11-0.49% IQR]). The intra-assay variation in miR-39 Ct values was assessed (CV median [IQR]: 3.04 [2.50-3.64] %). Reproducibility was determined by measuring inter-assay variability across plates and days by measuring miR-122 concentrations of reference samples. A no enzyme control (NEC), omitting the reverse transcriptase enzyme during reverse transcription, and no template control (NTC) omitting the cDNA in the RT-PCR plate were also included in every run. NEC and NTC controls had Ct values of >35. Ct values less than 35 were regarded as positive amplification signals.

Quantification of K18:

Samples were stored at -80°C before analysis. K18 was quantified in samples from healthy volunteers and patients in the ALISTER study, with these samples stored for a maximum of just over 2 years (113 weeks) (median [IQR]: 48.4 [28.7-77.8] weeks) prior to analysis. The K18 assay was established and samples were analysed by author SAER in Uganda. K18 was quantified in serum samples from the SAEFRIF trial, these samples were stored for a maximum of 1 year (median [IQR]: 19.1 [11.1-26.2] weeks). K18 has been reported as stable in serum up to 7 freeze-thaw cycles (Olofsson *et al.*, 2007) and for up to 2 years when frozen (Cummings, Ranson, Butt, Moore & Dive, 2007). Total K18 was quantified using the Peviva M65 classic ELISA (Bioaxxes, Tewkesbury, UK), according to the manufacturer's instructions. Samples were measured in duplicate. CV values for the dataset were (median [IQR]: 2.85%, [1.33-4.97%]). Reproducibility was determined using the provided plate controls.

Assessment of causality:

DILI was pre-defined in this study as >3 ULN ALT in the presence of symptoms or >5 ULN in absence of symptoms (Aithal *et al.*, 2011). The ULN for ALT was 50 IU/L in the populations studied, as defined by local clinical practice. The Roussel Uclaf Causality Assessment Method (RUCAM) was used to determine formal causality between anti-TB medication and liver injury (Bethesda (MD): National Institute of Diabetes and Digestive and Kidney Diseases, 2017). The pattern of liver injury was determined using the R ratio, considering ALT and alkaline phosphatase activity. Further factors considered include time to onset, course of injury, risk factors (age and alcohol), concomitant drugs, the exclusion of non-drug causes of injury and previous information on drug hepatotoxicity.

Statistical analysis:

Data were summarised as median (IQR) or n (%) for summary statistics of the study participants. One-way Kruskal-Wallis ANOVA was used to determine the difference in miR-122 and K18 between the healthy subjects and different patient groups. Wilcoxon matched-pairs signed rank test was used to determine the difference in miR-122 and K18 upon starting treatment. The coefficient of variation was calculated across 3 or more samples to assess the intra-individual variability of ALT and K18 in the HIV-TB coinfecting population. Correlation of the biomarkers was determined using Spearman's rank correlation. The difference between miR-122 or K18 in samples grouped by ALT was determined using a Mann-Whitney t-test. A receiver operating characteristic (ROC) analysis was undertaken on all patient samples grouped by normal ALT (≤ 50 IU/L) and elevated ALT (>50 IU/L). Statistical analyses were performed using Graphpad Prism (GraphPad Software, La Jolla, California).

Results:

A total of 235 patients were recruited into the study, (healthy volunteers (n=28). In ALISTER: active TB (n=30), latent TB (n=88), NTM infection (n=25). In SAEFRIF: HIV-TB coinfection (n=64)). The healthy volunteers had a median age of 27 years (IQR 24 to 30). 64% male. All were white British. Demographic and clinical characteristics for patients within ALISTER and SAEFRIF are presented in **Table 1**. The healthy volunteers were predominantly white, with a median age of 27 [IQR: 24-30] years. There was no significant difference in miR-122 (P=0.09) between the groups. There was a statistically significant but clinically minor difference in K18 between groups (P=0.03) (**Table 2 & Figure 1**). Serial samples were collected in 65 patients in the ALISTER study (**Figure 2**). The time patients had spent on treatment was (median [IQR]: active TB 3.0 [2.4-6.9]; latent TB 3.9 [2.4-12.2]; NTM infection 4.0 [2.2-6.9] weeks). Commencing treatment was associated with a statistically significant, clinically insignificant increase in ALT (median [IQR]: baseline 15 [12-24]; on treatment 17 [13-27] IU/L; P=0.03) and miR-122 (median [IQR]: baseline 3.12 [1.20-5.63]; on treatment 3.95 [1.75-7.98] fM; P=0.01). There was also an increase in K18 which did not reach statistical significance (median [IQR]: baseline 150 [103-224]; on treatment 167 [110-246] U/L; P=0.4). Serial samples were also collected in 50 SAEFRIF patients (**Figure 3**). In the SAEFRIF patients, starting treatment did not lead to a significant change in ALT (median [IQR]: week 0: 22 [14-31]; week 2: 24 [14-32] IU/L; P=0.62) or K18 (median [IQR]: week 0: 204 [130-344]; week 2: 169 [117-262] U/L; P=0.3).

When all samples from all time points were included there was a significant correlation between ALT and miR-122 (n=251, Spearman rank $r = 0.52$, 95%CI = 0.42-0.61, $P < 0.0001$) (**Figure 4A**). There was a significant, but less tight, correlation between ALT and K18 (n=491, Spearman rank $r = 0.42$, 95% CI = 0.34-0.49, $P < 0.0001$) (**Figure 4B**). miR-122 correlated with K18 (n=252, Spearman rank $r = 0.32$, 95% CI = 0.20-0.43, $P < 0.0001$) (**Figure 4C**).

MiR-122 was increased 8.0-fold in samples with elevated ALT (>50 IU/L) compared to samples with normal ALT (predefined as ≤ 50 IU/L) (median [IQR]: elevated ALT 23.9 [11.5-60.4]; normal ALT 3.00 [1.31-4.82] fM; $P < 0.0001$) (**Figure 5A**). K18 was increased 2.3-fold in those samples with elevated ALT (>50 IU/L) compared to samples with normal ALT (≤ 50 IU/L) (median [IQR]: elevated ALT 395 [217-683]; normal ALT 170 [120-250]

U/L; $P < 0.0001$) (**Figure 5B**). ROC analysis was performed on these grouped samples (**Figure 5C & D**). MiR-122 identified elevated ALT (>50 IU/L) with high accuracy (ROC-AUC = 0.93, 95 % CI = 0.88-0.98, $P < 0.001$). K18 identified elevated ALT (>50 IU/L) with lower accuracy (ROC-AUC = 0.80, 95% CI = 0.72-0.87, $P < 0.0001$). The sensitivity and specificity of miR-122 and K18 was unchanged when only samples from patients on treatment were included in the analysis (miR-122: ROC-AUC = 0.93, 95%CI = 0.87 to 0.99, $P < 0.0001$. K18: ROC-AUC = 0.78, 95%CI = 0.68 to 0.87, $P < 0.0001$) (**Supplementary Figure 1**).

The inter-individual variability in miR-122, K18 and ALT was compared in the different patient groups (**Table 2**). Inter-individual variability was higher for both miR-122 and K18 than ALT. Sequential samples from the SAEFRIF trial (patients with normal ALT (<50 IU/L) and three or more samples collected) were analysed to determine the intra-individual variability over time (CV median [IQR]: ALT 23.9 [16.6-36.1] %; K18 35.4 [24.9-41.9] %; $P = 0.02$). Intra-individual variability was higher for K18 than ALT.

In this study there were two cases of DILI (as pre-defined in study protocols), both cases were for patients receiving isoniazid alone for the treatment of latent TB within the ALISTER study. The first case was of a 51-year-old white Scottish male patient, who experienced peak ALT activity of 431 IU/L, (**Figures 6A, C & E**). Before starting treatment, he had normal ALT (18 IU/L), miR-122 was 4 fM and his K18 was 58 U/L. 3 months into treatment his ALT activity increased to 431 IU/L, miR-122 rose to 60 fM and K18 rose to 1248 U/L. Drug treatment was halted, ALT returned to within normal limits 18 weeks later. Formal causality between isoniazid and liver injury was determined using the RUCAM scale and was determined as probable (RUCAM scale = 6).

The second case was of a 71-year-old white British female patient, (**Figures 6B, D & F**). At baseline her ALT activity was 28 IU/L, miR-122 was 17 fM and K18 was 219 U/L. 2 weeks into treatment her ALT activity had not increased (25 IU/L) but K18 and miR-122 had risen (307 U/L and 63 fM, respectively). DILI was present 5 weeks into treatment with the presence of a drug rash and elevated ALT at 194 IU/L. At this time K18 activity had risen to 3490 U/L and miR-122 concentration had increased further to 336 fM. Drug treatment was halted, and the patient was discharged and lost to further follow up.

RUCAM causality assessment indicated isoniazid was the probable cause of liver injury (RUCAM scale = 7).

Discussion:

The utility of miR-122 and K18 as exploratory DILI biomarkers has been demonstrated by several multicentre studies and this has resulted in FDA support for continued development to full qualification (Food and Drug Administration Centre for Drug Evaluation and Research, 2016). However, the properties of these biomarkers have not been robustly studied in patients with TB in Africa.

Given the potential involvement of the liver in TB infection it was important to determine if circulating concentrations of miR-122 and K18 differed from healthy individuals in the presence of infection, including active, latent and non-tuberculous mycobacterial infection and HIV-TB coinfection. For example, if either biomarker was elevated by mycobacterial infection *per se* then it would be de-prioritised as a biomarker in this important context of use. In this study we have demonstrated that circulating miR-122 and K18 in healthy volunteers and patients with active TB, latent TB and non-tuberculous mycobacterial infection are not substantially different. This suggests that the presence of mycobacterial infection does not affect circulating miR-122 and K18. Furthermore, circulating K18 in HIV-TB coinfecting African patients was similar to the other groups, which were predominantly Caucasian. This suggests that the healthy reference interval for K18 in an African and Caucasian population is likely to be similar. In addition, we have demonstrated that, in the absence of DILI, neither miR-122 nor K18 change substantially upon commencing treatment. Both miR-122 and K18 correlate with ALT, indicating these biomarkers may have diagnostic utility. In this pilot study, miR-122 distinguished those patients with an elevated ALT with greater sensitivity and specificity than K18 but this should be interpreted with caution as there were only two cases of DILI as predefined in our study protocol. In these DILI cases the elevations in ALT temporarily correlated with a rise in both miR-122 and K18. In addition, in one of these patients, miR-122 and K18 rose before ALT, indicating a potential for these novel biomarkers to predict the development of DILI earlier than ALT. The results of this study provide initial evidence for the potential use of both miR-122 and K18 as biomarkers of TB medicine associated DILI.

Further work should focus on determining the diagnostic value of the biomarkers, whether they correlate with rises in ALT and so can diagnose DILI within this population.

A clear definition of the dynamic range, sensitivity and specificity of miR-122 and K18 within this population is needed before they can be used as a biomarker of DILI. Furthermore, given that evidence suggests miR-122 and K18 both rise earlier than ALT in paracetamol DILI, it is important to determine if they have the same predictive value in patients with mycobacterial infections. This predictive ability of these novel biomarkers may enable early identification of patients at risk of DILI, leading to prevention of liver injury through halting or altering treatment regimens before significant liver injury develops. Specifically, the biomarkers could be a useful early indicator of the development of DILI in patients being reintroduced to essential anti-TB medications, a group at elevated risk of DILI recurrence.

Our study had a limited number of cases of anti-TB DILI. Historical data suggested approximately 2-5% of patients receiving anti-TB treatment in the UK will develop DILI. However, within the ALISTER study only 2 patients developed DILI, 1.4% of the patients recruited. Larger multi-centre studies are required to recruit enough patients to determine the diagnostic power of miR-122 and K18 in anti-TB DILI. The majority of values for circulating miR-122 concentrations in the patient groups fell within the published upper limit of the healthy reference interval of 45 fM generated from the SAFE-T dataset (Church *et al.*, 2018). However, there were two patients with miR-122 increased above this healthy reference interval (miR-122 = 77 & 77 fM) when ALT was still normal (ALT = 25 & 26 IU/L). This may reflect a limitation of miR-122, namely that it has been reported to have relatively high variability (Church *et al.*, 2018). In our study, the variability of the novel biomarkers was higher than ALT, with miR-122 having higher inter-subject variability than K18. Although the previously published healthy reference interval provides a valuable comparison, the circulating concentration of miR-122 in healthy volunteers in this study fell between 0.21-8.75 fM, considerably lower than the published ULN of 45 fM which was generated from the SAFE-T dataset (Church *et al.*, 2018). This healthy reference interval was developed using a larger sample size than that included in this study. However, it was determined using different quantification and normalisation methods, therefore a direct comparison is challenging. There were two patients who had substantially elevated K18 in the absence of elevated ALT. Firstly, in ALISTER (K18 = 4207 U/L, ALT = 43 IU/L). Secondly, in the SAEFRIF trial, where a patient had K18 ranged from 10,000-20,000 U/L, but not substantially elevated ALT (22-52

IU/L). The reason for these two outliers is unknown and requires further study with larger patient numbers. Another limitation of our study is that miR-122 was only measured in the ALISTER cohort, whereas K18 was measured in both ALISTER and SAEFRIF cohorts. This limitation was due miR-122 only being measured in Edinburgh. The global COVID pandemic and the HIV positive status of the SAEFRIF samples meant these could not be transferred out of Uganda. Given the possible superior sensitivity/specificity of miR-122 over K18 which is suggested by this pilot study it will be important for future studies to measure miR-122 in the African setting. Finally, this study did not include patients recruited in Asia, a region with high TB prevalence. This group should be included in future studies.

In summary, the presence of mycobacterial infection does not alter miR-122 or K18 concentrations in the absence of DILI. African HIV-TB coinfecting patients had similar K18 concentrations to healthy volunteers and Caucasian TB patients. Patients who experienced elevations in ALT also demonstrated rises in both miR-122 and K18 indicating the diagnostic potential of these biomarkers. Future trials of miR-122 and K18 as biomarkers of anti-TB DILI could be performed using the data presented in this paper to inform the study design.

Funding statement:

Sarah Rupprechter was funded by the UK Medical Research Council via the Doctoral Training Programme Grant in Precision Medicine at the University of Edinburgh.

Acknowledgements

The authors acknowledge the contribution of the British Heart Foundation Centre of Research Excellence Award.

Conflicts of interest:

The authors declare no conflicts of interest.

Data available on request from the authors

Tables:

Table 1: Clinical and demographic characteristics of patients in the study. Data are presented as median (IQR) or n (%).

	Median (IQR) N (%)	Active TB (n=30)	Latent TB (n=88)	NTM infection (n=25)	HIV-TB coinfection (n=64)
Age (yrs)		41 (33-56)	40 (23-63)	66 (57-74)	38 (32-44)
Gender	Male	20 (67%)	23 (26%)	10 (40%)	40 (62%)
	Female	10 (33%)	65 (74%)	15 (60%)	24 (38%)
Ethnicity	African	2 (7%)	7 (8%)	0 (0%)	64 (100%)
	Arab	0 (0%)	1 (1%)	0 (0%)	0 (0%)
	Bangladeshi	1 (3%)	2 (2%)	0 (0%)	0 (0%)
	Indian	7 (23%)	3 (3%)	0 (0%)	0 (0%)
	Iraqi	1 (3%)	0 (0%)	0 (0%)	0 (0%)
	Pakistani	5 (17%)	3 (3%)	1 (4%)	0 (0%)
	South East Asian	2 (7%)	1 (1%)	0 (0%)	0 (0%)
	White	12 (40%)	66 (75%)	24 (96%)	0 (0%)
	Unknown	0 (0%)	5 (6%)	0 (0%)	0 (0%)
Location of infection	Pulmonary	11 (37%)	-	-	51 (80%)
	Extrapulmonary	16 (53%)	-	-	9 (14%)
	Both	3 (10%)	-	-	1 (1%)
	Unknown	0 (0%)	-	-	3 (5%)
Culture confirmed	Yes	20 (67%)	-	-	64 (100%)
	No	10 (33%)	-	-	0 (0%)
Resistance	None	26 (87%)	-	-	-
	Isoniazid	1 (3%)	-	-	-
	Pyrazinamide	2 (7%)	-	-	-
	Rifampicin	0 (0%)	-	-	-
	MDR	1 (3%)	-	-	-
NTM species	MAC	-	-	22 (88%)	-
	M. abscessus	-	-	2 (8%)	-
	M. malmoense	-	-	1 (4%)	-
Baseline ALT (IU/L)		18 (14-35)	15 (12-21)	15 (12-22)	20 (14-30)
Treatment	Isoniazid, Rifampicin	-	43 (48%)	-	-
	Isoniazid	-	26 (30%)	-	-

	Rifampicin	-	18 (20%)	-	-
	Moxifloxacin	-	1 (1%)	-	-
	Rifampicin, Azithromycin		-	1 (4%)	-
	Rifampicin, Clarithromycin	-	-	3 (12%)	-
	Rifampicin, Clarithromycin, Amikacin	-	-	1 (4%)	-
	Rifampicin, Ethambutol	-	-	1 (4%)	-
	Rifampicin, Ethambutol, Amikacin	-	-	1 (4%)	-
	Rifampicin, Ethambutol, Clarithromycin	-	-	15 (60%)	-
	Rifampicin, Ethambutol, Moxifloxacin	-	-	1 (4%)	-
	Rifabutin, Clarithromycin, Moxifloxacin	-	-	1 (4%)	-
	Clarithromycin, Clofazimine, Azithromycin	-	-	1 (4%)	-
	Isoniazid, Rifampicin, Pyrazinamide, Ethambutol plus ART	-	-	-	64 (100%)
Initiation phase	Isoniazid, Rifampicin, Pyrazinamide, Ethambutol	22 (73%)	-	-	-
	Isoniazid, Rifampicin, Pyrazinamide, Moxifloxacin	1 (3%)	-	-	-
	Isoniazid, Rifampicin, Pyrazinamide, Ethambutol, Moxifloxacin	1 (3%)	-	-	-

	Isoniazid, Rifabutin, Pyrazinamide, Ethambutol	1 (3%)	-	-	-
	Isoniazid, Rifampicin, Ethambutol, Moxifloxacin	3 (10%)	-	-	-
	Rifampicin, Ethambutol, Moxifloxacin	1 (3%)	-	-	-
	Bedaquiline, Clofazimine, Cycloserine	1 (3%)	-	-	-
Continuation phase	Isoniazid, Rifampicin	20 (67%)	-	-	-
	Isoniazid, Rifampicin, Moxifloxacin	2 (7%)	-	-	-
	Isoniazid, Rifampicin, Ethambutol	2 (7%)	-	-	-
	Isoniazid, Rifabutin, Moxifloxacin	1 (3%)	-	-	-
	Isoniazid, Ethambutol, Moxifloxacin	1 (3%)	-	-	-
	Isoniazid, Rifampicin, Pyrazinamide, Ethambutol	1 (3%)	-	-	-
	Rifampicin, Ethambutol, Moxifloxacin	2 (7%)	-	-	-
	Bedaquiline, Clofazimine, Cycloserine	1 (3%)	-	-	-

Table 2: Circulating ALT, miR-122 and K18 in individuals with normal ALT (<50 IU/L) in healthy volunteers and first samples taken upon starting ALISTER study or SAEFRIF trial.

		Healthy Volunteers (n=28)	Active TB (n=26)	Latent TB (n=87)	NTM infection (n=25)	HIV-TB coinfection (n=59)
ALT (IU/L)	Median [IQR]	18 [12-22]	22 [14-27]	16 [12-23]	16 [13-25]	18 [14-27]
	Coefficient of variation (%)	44.0	40.7	48.4	54.3	50.3
MiR-122 (fM)	Median [IQR]	2.88 [1.75-3.96]	4.14 [1.34-7.56]	2.92 [1.46-4.54]	1.57 [0.91-3.72]	-
	Coefficient of variation (%)	65.8	183.4	120.6	168.5	-
K18 (U/L)	Median [IQR]	210 [134-259]	145 [92-220]	152 [105-215]	163 [138-263]	172 [132-276]
	Coefficient of variation (%)	45.9	62.2	207.8	69.2	79.4

Figures:

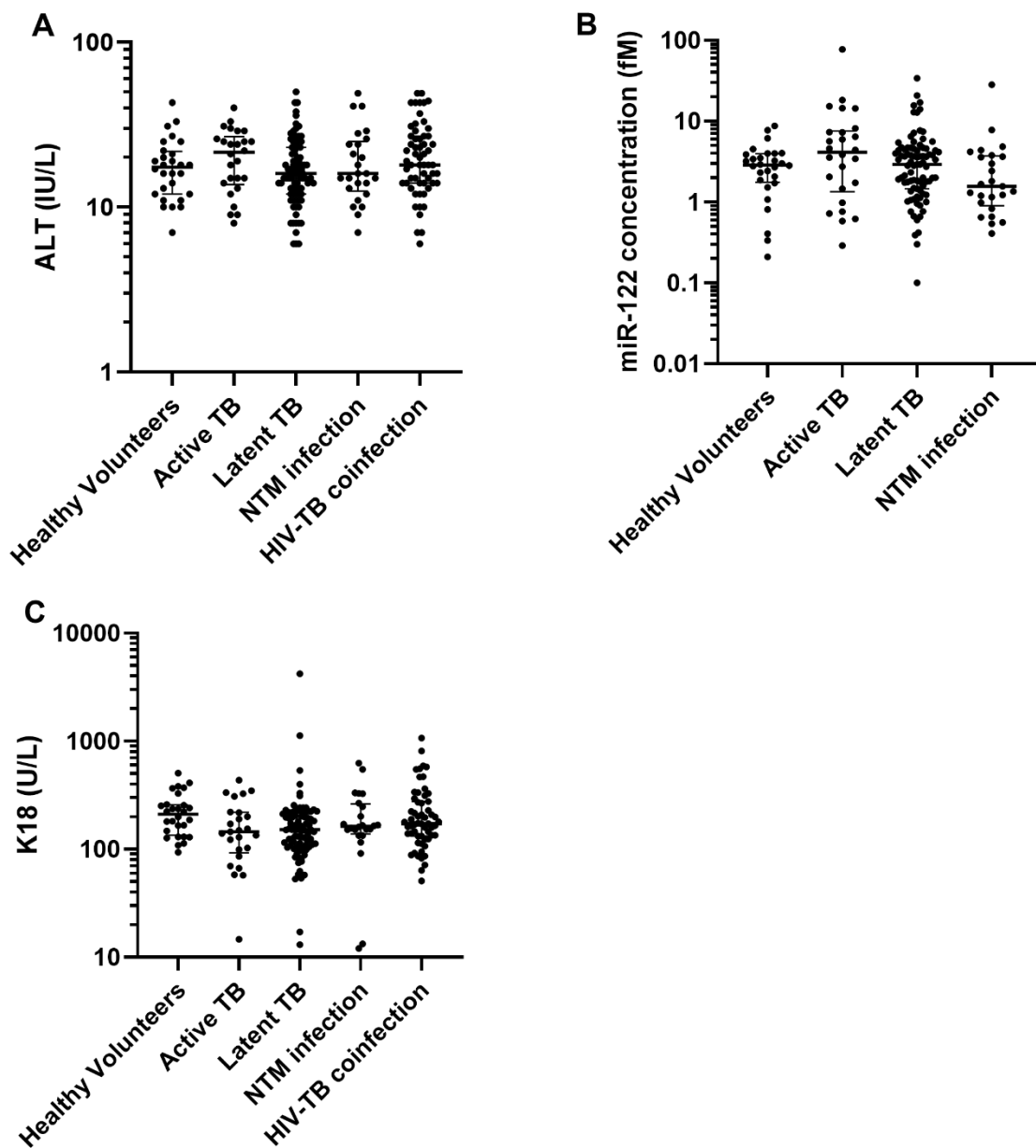


Figure 1: Circulating concentration of (A) ALT (IU/l), (B) miR-122 (fM) and (C) K18 (U/L). Data are the first collected samples from the ALISTER study or SAEFRIF trial. Participants include healthy volunteers (n=28), active TB (n=26), latent TB (n=87), NTM infection (n=25) and HIV-TB coinfection (n=59). Data are presented as dot plots. Line shows median and bars show interquartile range. The significance of differences between groups were determined by one-way Kruskal-Wallis ANOVA, (ALT P=0.2; miR-122 P=0.09; K18 P=0.03).

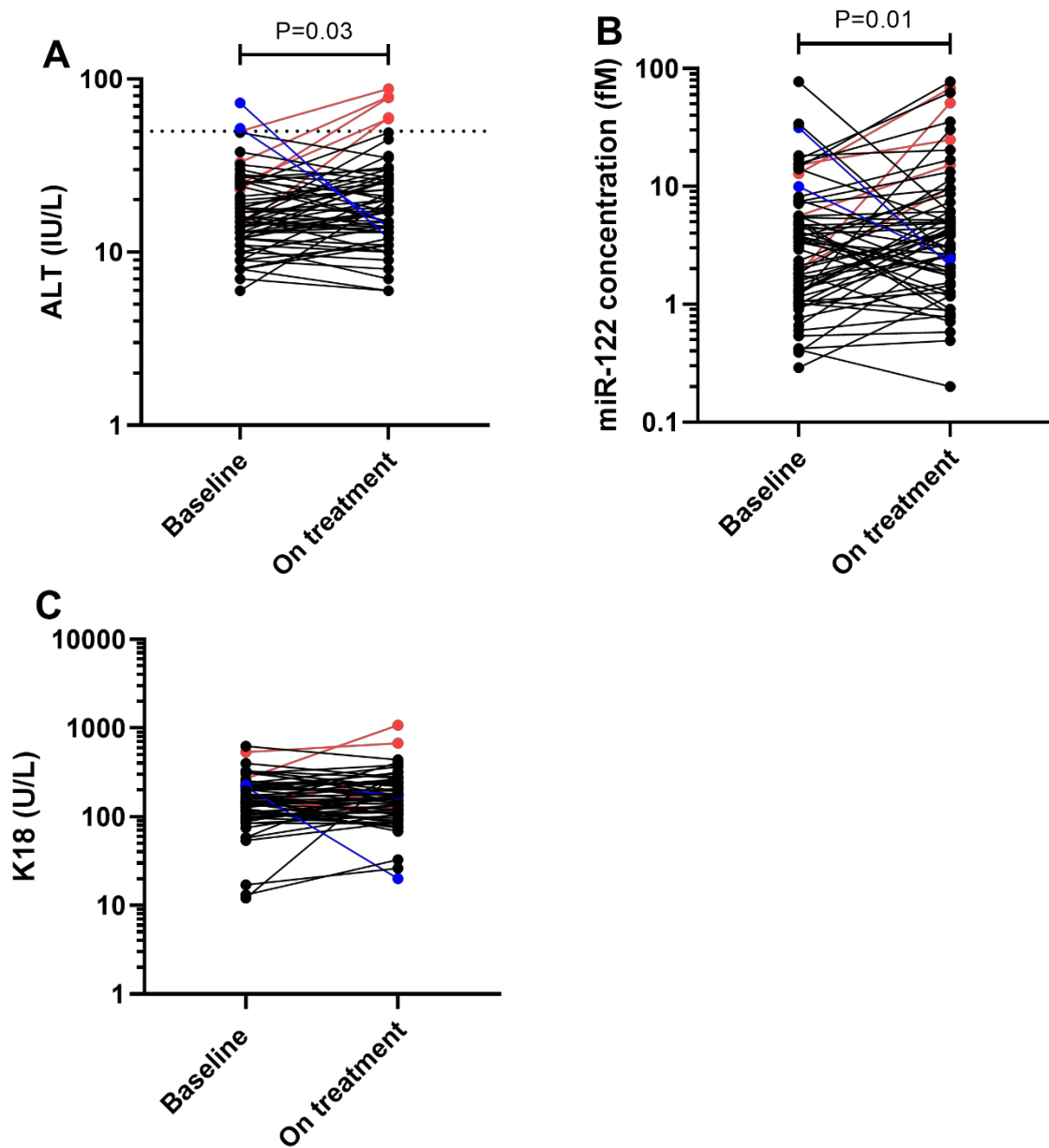


Figure 2: Circulating concentration of (A) ALT (IU/L), (B) miR-122 (fM) and (C) K18 (U/L) in sequential samples in patients within the ALISTER study, (active TB n=9; latent TB n=46; NTM n=10) Data shown as dot plots. Black dots show patients with normal ALT activity at baseline and on treatment; blue dots show patients with ALT activity >50U/L at baseline which decreased on treatment; red dots show patients whose ALT increased above 50U/L with treatment. Dotted line on (A) ALT = 50 IU/L. The significance of differences between baseline and on treatment concentrations of biomarkers was determined by Wilcoxon signed rank test (ALT P=0.03; miR-122 P=0.01; K18 P=0.4).

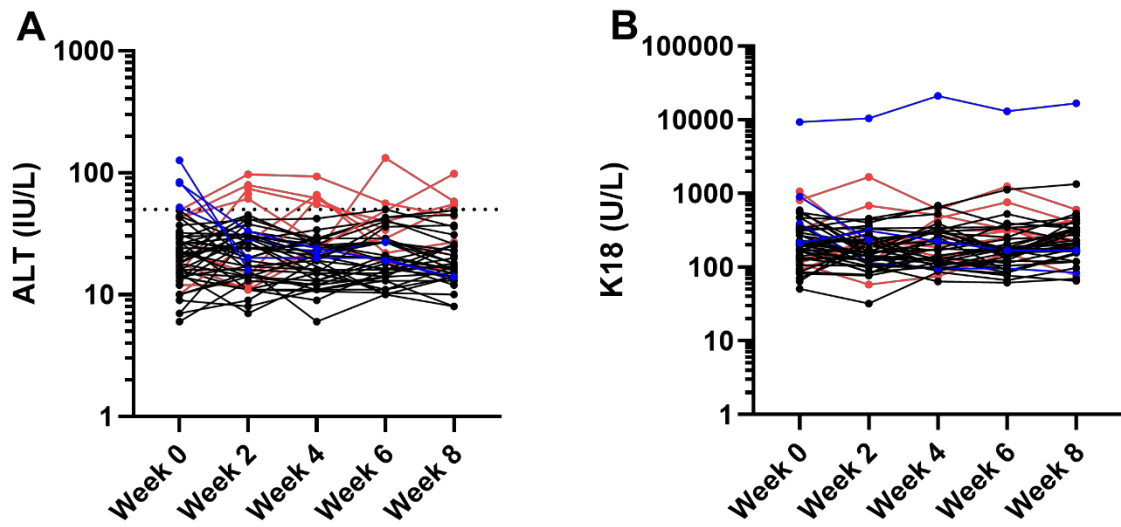


Figure 3: Circulating concentration of (A) ALT (IU/L) and (B) K18 (U/L) for sequential samples in patients within the SAEFRIF trial. Black dots show patients with normal ALT throughout treatment, red points show patients whose ALT rises >50 IU/L during treatment, blue points show patients whose ALT falls from >50 IU/L upon starting treatment. Dotted line on (A) ALT = 50 IU/L.

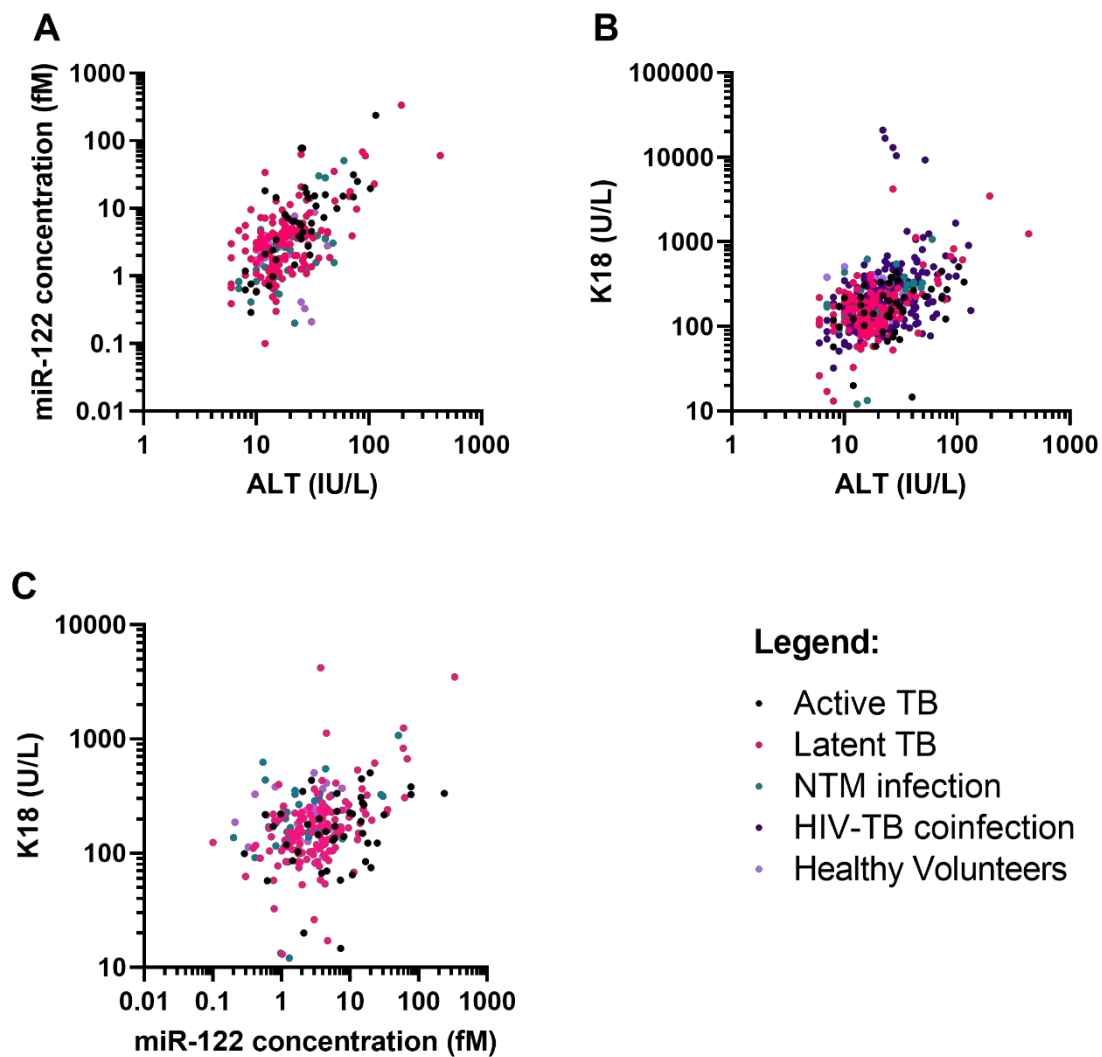


Figure 4: Correlation of (A) miR-122 (fM) vs ALT (IU/L), (B) K18 (U/L) vs ALT (IU/L) and (C) miR-122 (fM) vs K18 (U/L). Patient samples (healthy volunteers n=28; active TB n=44; latent TB n=142; NTM infection n=39; HIV-TB coinfection n=241). Statistical analysis of the significance of the correlation calculated using Spearman's rank correlation coefficient (miR-122 vs ALT: n=251, Spearman rank $r = 0.52$, 95% CI 0.42-0.61, $P < 0.0001$) (K18 vs ALT: n=491, Spearman rank $r = 0.42$, 95% CI 0.34-0.49, $P < 0.0001$) (miR-122 vs K18: n=252, Spearman rank $r = 0.32$, 95% CI 0.20-0.43, $P < 0.0001$).

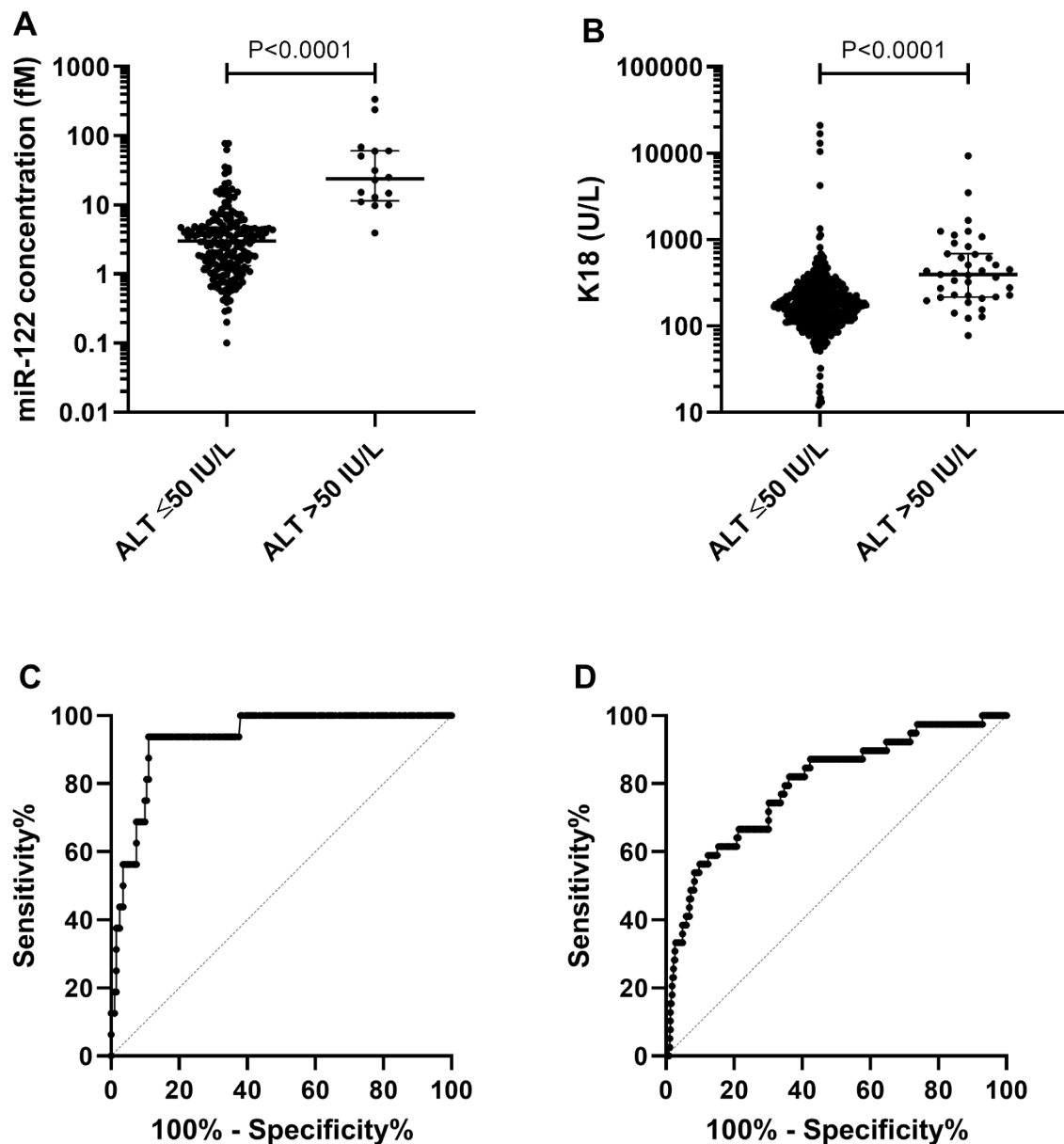


Figure 5: Comparison of samples grouped by normal ALT (≤ 50 IU/L) and elevated ALT (> 50 IU/L). (A) miR-122 concentration (fM) and (B) K18 (U/L). Patient samples (healthy volunteers $n=28$; active TB $n=44$; latent TB $n=142$; NTM infection $n=39$; HIV-TB coinfection $n=241$). Statistical analysis of the significance of the difference between the groups calculated with the Mann-Whitney t-test (miR-122 $P < 0.0001$; K18 $P < 0.0001$). ROC analysis of samples grouped by normal ALT (≤ 50 IU/L) and elevated ALT (> 50 IU/L), (C) miR-122 and (D) K18. MiR-122 (ROC-AUC = 0.93, 95 % CI = 0.88-0.98, $P < 0.001$). K18 (ROC-AUC = 0.80, 95% CI = 0.72-0.87, $P < 0.0001$). (ROC) receiver operator characteristic; (AUC) area under the curve.

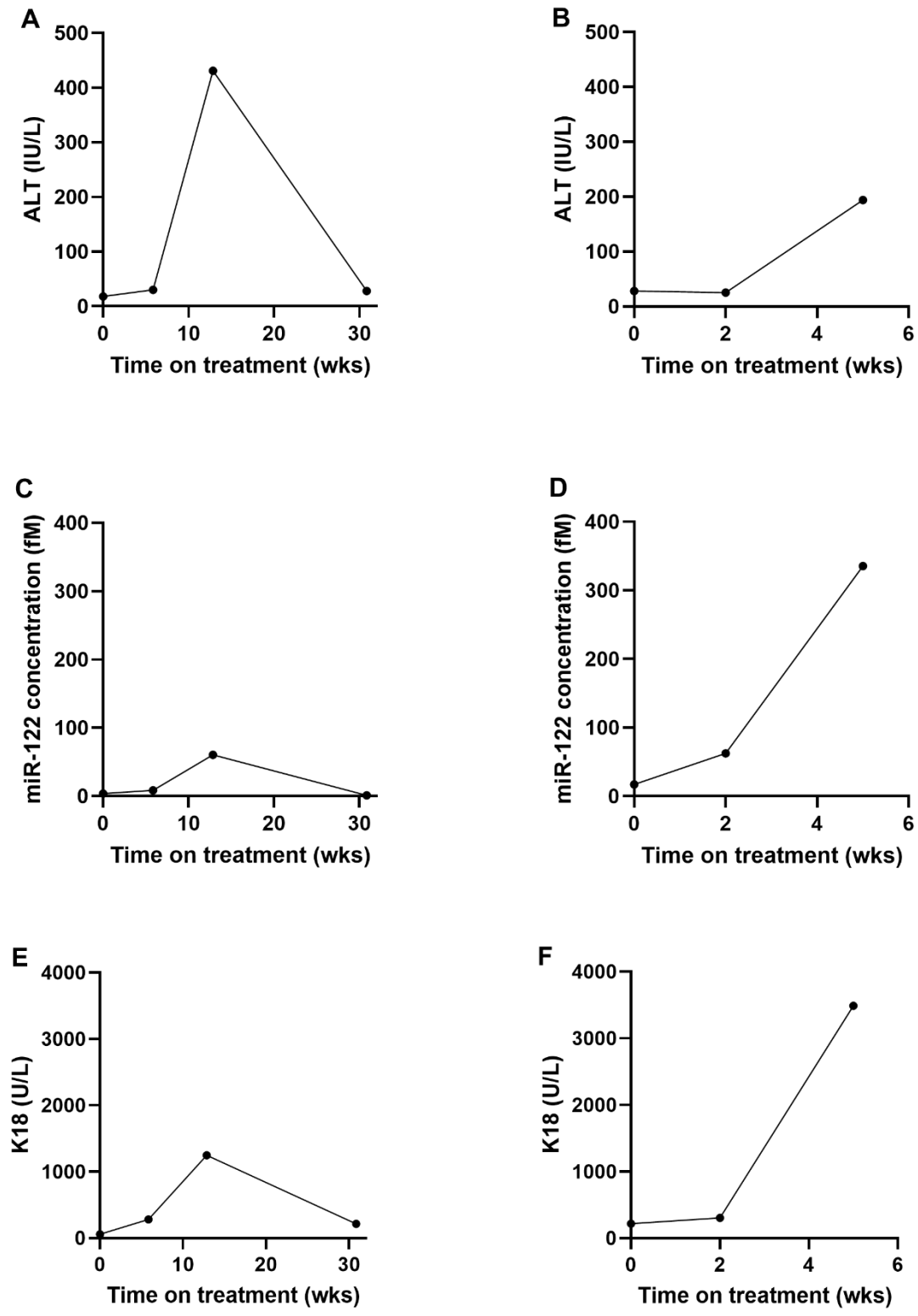


Figure 6: Circulating concentration of (A & B) ALT (IU/L), (C & D) miR-122 (fM) and (E & F) K18 (U/L) over the course of treatment (weeks) for two cases who developed DILI as pre-defined as >x3 ULN ALT in the presence of symptoms or >x5 ULN in absence of symptoms (Aithal *et al.*, 2011). Case 1 (A, C & E); Case 2 (B, D & F).

Supplementary Figure 1: Comparison of samples grouped by normal ALT (≤ 50 IU/L) and elevated ALT (> 50 IU/L) in those patients on treatment for mycobacterial infection. (A) miR-122 concentration (fM) and (B) K18 (U/L). Statistical analysis of the significance of the difference between the groups calculated with the Mann-Whitney test (miR-122 $P < 0.0001$; K18 $P < 0.0001$). ROC analysis of samples grouped by normal ALT (≤ 50 IU/L) and elevated ALT (> 50 IU/L), (C) miR-122 and (D) K18. (ROC) receiver operator characteristic; (AUC) area under the curve.

References:

- Adebayo, D., Mookerjee, R. P. and Jalan, R. (2012) 'Mechanistic biomarkers in acute liver injury: Are we there yet?', *Journal of Hepatology*. European Association for the Study of the Liver, 56(5), pp. 1003–1005.
- Aithal, G. P. *et al.* (2011) 'Case definition and phenotype standardization in drug-induced liver injury', *Clinical Pharmacology and Therapeutics*. 2011/05/06, 89(6), pp. 806–815.
- Antoine, D. J. *et al.* (2013) 'Mechanistic biomarkers provide early and sensitive detection of acetaminophen-induced acute liver injury at first presentation to hospital', *Hepatology*, 58(2), pp. 777–787.
- Antoine, D. J. and Dear, J. W. (2016) 'How to treat paracetamol overdose and when to do it', *Expert Review of Clinical Pharmacology*. Taylor & Francis, 9(5), pp. 633–635.
- Balzano, F. *et al.* (2015) 'MiRNA stability in frozen plasma samples', *Molecules*, 20(10), pp. 19030–19040.
- Bethesda (MD): National Institute of Diabetes and Digestive and Kidney Diseases (2017) 'LiverTox: Clinical and Research Information on Drug-Induced Liver Injury [Internet] Roussel Uclaf Causality Assessment Method (RUCAM) in Drug Induced Liver Injury.', [Online]. Available at: <https://livertox.nih.gov/rucam.html>.
- Bustin, S. A. *et al.* (2009) 'The MIQE guidelines: minimum information for publication of quantitative real-time PCR experiments.', *Clinical Chemistry*. 55(4), pp. 611–22.
- Caulín, C., Salvesen, G. S. and Oshima, R. G. (1997) 'Caspase cleavage of keratin 18 and reorganization of intermediate filaments during epithelial cell apoptosis', *Journal of Cell Biology*, 138(6), pp. 1379–1394.
- Church, R. J. *et al.* (2018) 'Candidate biomarkers for the diagnosis and prognosis of drug-induced liver injury: An international collaborative effort.', *Hepatology (Baltimore, Md.)*, 00(00), pp. 1–14.
- Cummings J, Ranson M, Butt F, Moore D, & Dive C (2007). Qualification of M30 and M65 ELISAs as surrogate biomarkers of cell death: long term antigen stability in cancer patient plasma. *Cancer Chemother Pharmacol* 60: 921-924.
- Dear, J. W. *et al.* (2018) 'Risk stratification after paracetamol overdose using mechanistic biomarkers: results from two prospective cohort studies', *The Lancet Gastroenterology and Hepatology*, 3(2), pp. 104–113.
- European Medicines Agency (2016) *Letter of support for drug-induced liver injury (DILI)*

biomarker. Available at: https://www.ema.europa.eu/documents/other/letter-support-drug-induced-liver-injury-dili-biomarker_en.pdf (Accessed: 8 October 2018).

Food and Drug Administration Centre for Drug Evaluation and Research (2016) *Letter of Support for Drug-Induced Drug-Induced Liver Injury (DILI) Biomarker(s)*. Available at: <https://www.fda.gov/downloads/Drugs/DevelopmentApprovalProcess/UCM517355.pdf> (Accessed: 8 October 2018).

Girling, D. J. (1977) 'The hepatic toxicity of antituberculosis regimens containing isoniazid, rifampicin and pyrazinamide', *Tubercle*. Elsevier, 59(1), pp. 13–32.

Griffith, D. E. *et al.* (2007) 'An official ATS/IDSA statement: Diagnosis, treatment, and prevention of nontuberculous mycobacterial diseases', *American Journal of Respiratory and Critical Care Medicine*, 175(4), pp. 367–416. doi: 10.1164/rccm.200604-571ST.

Hanley, A. J. G. *et al.* (2004) 'Elevations in markers of liver injury and risk of type 2 diabetes: the insulin resistance atherosclerosis study.', *Diabetes*. American Diabetes Association, 53(10), pp. 2623–32.

Hassan, H. M. *et al.* (2015) 'Hepatotoxicity mechanisms of isoniazid: A mini-review', *Journal of Applied Toxicology*, 35(12), pp. 1427–1432.

Haworth, C. S. *et al.* (2017) *British Thoracic Society guidelines for the management of non-tuberculous mycobacterial pulmonary disease (NTM-PD)*, *Thorax*. doi: 10.1136/thoraxjnl-2017-210927.

Karlen, Y. *et al.* (2007) 'Statistical significance of quantitative PCR', *BMC Bioinformatics*. BioMed Central, 8(1), p. 131.

LaDue, J. S. and Wroblewski, F. (1955) 'The Significance of the Serum Glutamic Oxalacetic Transaminase Activity Following Acute Myocardial Infarction', *Circulation*, 11(6), pp. 871–877.

Metushi, I., Uetrecht, J. and Phillips, E. (2016) 'Mechanism of isoniazid-induced hepatotoxicity: Then and now', *British Journal of Clinical Pharmacology*. 2016/01/17, 81(6), pp. 1030–1036.

Nabisere, R. *et al.* (2020) 'Pharmacokinetics, Safety/tolerability, and Efficacy of high-dose Rifampicin in tuberculosis-HIV co-infected patients on efavirenz- or dolutegravir-based antiretroviral therapy: Study protocol for an open-label, phase II clinical trial (SAEFRIF)', *Trials*. *Trials*, 21(1), pp. 1–9.

Olofsson MH, Ueno T, Pan Y, Xu R, Cai F, van der Kuip H, *et al.* (2007). Cytokeratin-18 is a useful serum biomarker for early determination of response of breast carcinomas to

chemotherapy. *Clin Cancer Res* 13: 3198-3206.

Pettersson, J. *et al.* (2008) 'Muscular exercise can cause highly pathological liver function tests in healthy men.', *British Journal of Clinical Pharmacology*. 65(2), pp. 253–9.

Ramappa, V. and Aithal, G. P. (2013) 'Hepatotoxicity Related to Anti-tuberculosis Drugs: Mechanisms and Management', *Journal of Clinical and Experimental Hepatology*. 2013/03/01, 3(1), pp. 37–49.

Sattar, N. *et al.* (2004) 'Elevated alanine aminotransferase predicts new-onset type 2 diabetes independently of classical risk factors, metabolic syndrome, and C-reactive protein in the west of Scotland coronary prevention study.', *Diabetes*. American Diabetes Association, 53(11), pp. 2855–60.

Saukkonen, J. J. *et al.* (2006) 'An official ATS statement: Hepatotoxicity of antituberculosis therapy', *American Journal of Respiratory and Critical Care Medicine*. 2006/10/06, 174(8), pp. 935–952.

Senior, J. R. (2012) 'Alanine Aminotransferase: A Clinical and Regulatory Tool for Detecting Liver Injury—Past, Present, and Future', *Clinical Pharmacology & Therapeutics*. 92(3), pp. 332–339.

Shaughnessy, R. G. *et al.* (2015) 'Analysis of biobanked serum from a mycobacterium avium subsp paratuberculosis bovine infection model confirms the remarkable stability of circulating mirna profiles and defines a bovine serum mirna repertoire', *PLoS ONE*, 10(12), pp. 1–22.

Tostmann, A. *et al.* (2008) 'Antituberculosis drug-induced hepatotoxicity: Concise up-to-date review', *Journal of Gastroenterology and Hepatology*. 23(2), pp. 192–202.

Vliegenthart, A. D. B. *et al.* (2015) 'Comprehensive microRNA profiling in acetaminophen toxicity identifies novel circulating biomarkers for human liver and kidney injury', *Scientific Reports*. 2015/10/23, 5(1), p. 15501.

Wang, K. *et al.* (2009) 'Circulating microRNAs, potential biomarkers for drug-induced liver injury', *Proceedings of the National Academy of Sciences*. 2009/02/28, 106(11), pp. 4402–4407.

World Health Organization (WHO) (2017) *Guidelines for treatment of drug-susceptible tuberculosis and patient care*, WHO press. doi: 10.1586/17476348.1.1.85.

World Health Organization (WHO) (2018) *Latent tuberculosis infection: updated and consolidated guidelines for programmatic management.*, WHO press. doi:

10.1056/NEJMcp021045.

World Health Organization (WHO) (2019) 'WHO TB Report', *WHO Library Cataloguing-in-Publication Data World*.