

A RABAT CO-(MMUNITY)

A CELEBRATION OF AGEING, CULTURE AND WELLBEING

An Architecture of Home and Community

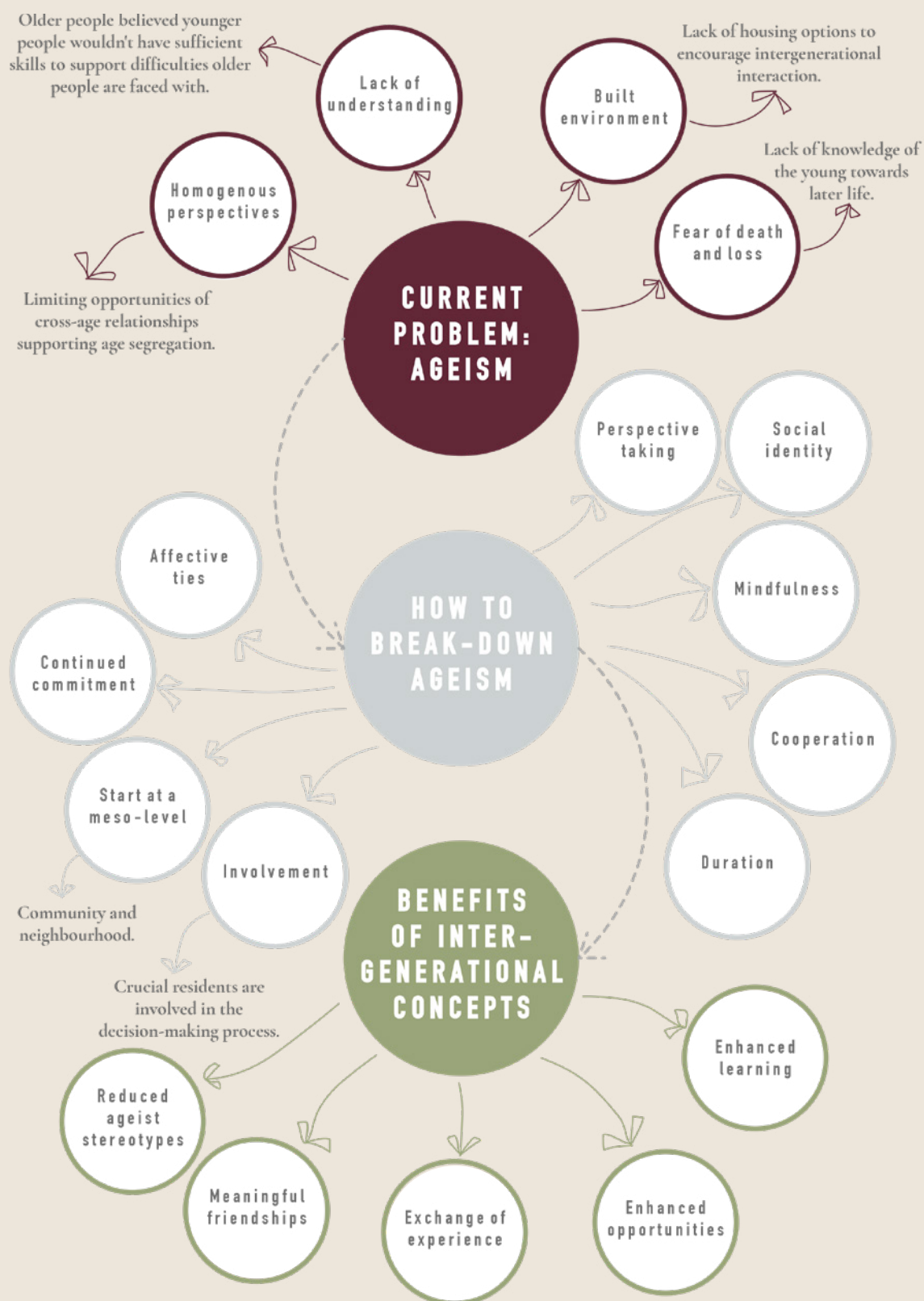
عمارة المنزل والمجتمع

The architecture of home - عمارة المنزل - to enhance and support life; inclusive of age, dignity and independence, is crucial for a thriving and empathetic community - تواصل اجتماعي-. With this proposal, we surpass housing that meets basic needs and **present a design pattern for a communal living space where age is a mindset and the elderly can live with dignity and independence.**

In taking inspiration from the rich culture of Rabat, Artist Roger Davis connects us to the scenes of daily activities as people, young and old, live within this community.

AN ARCHITECTURE OF HOME AND COMMUNITY: THE DESIGN CHALLENGE

‘The afternoon of human life must also have a significance of its own’
Carl Jung



→ Real-World Context + Current Problem: Ageism

The physical and social environments in which we live are powerful influences on Healthy Ageing. The World Health Organisation reminds us that there is **no ‘typical’ older person**. Important challenges lie in the continued design of a built environment that supports older people, intergenerational connectedness and community living.

→ Ageing and Architecture: Breaking Down Ageism

Within the context of architectural design, older age needs to be characterized by great **diversity** to mitigate risk of social marginalization, isolation and exclusion.

It is vital that Architectural expression holds makes a valuable contribution to a communities wellbeing, enablement, physical activity, and social connectivity.

→ Our Approach: Benefits of Intergenerational Concepts

In the context of crafting a **home and community**, our proposal stands against a design approach by which ‘one size fits all’. In synthesizing architectural and design research and precedent, our proposal is socially motivated and focused on **human experience** of inhabiting and interacting with built form (from the large scale of a city to small scale of a door handle).

It concerns itself with experience-rich human-scale design that responds to **people, place** and **programme**.

CO-LIFE PRINCIPALS: RESEARCH SYNTHESIS AND REAL-WORLD MOTIVATION



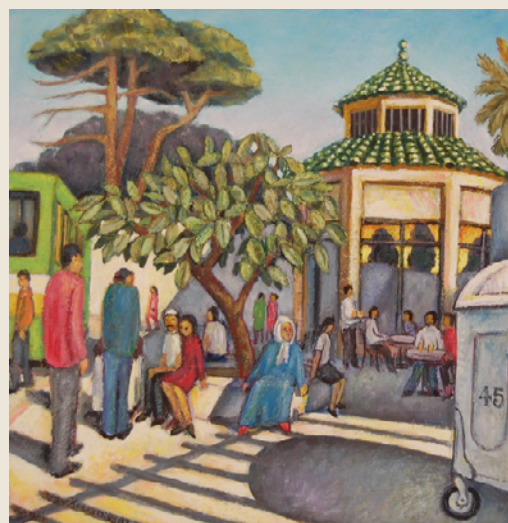
‘Tweedle Dum & Tweedle Dee’
Roger Davis, 2008.

PEOPLE

Morocco has become increasingly concerned about the welfare of its older populations in recent times.

1/4 of Moroccans will be over 60 by 2050.

The High Commission for Planning (HCP).



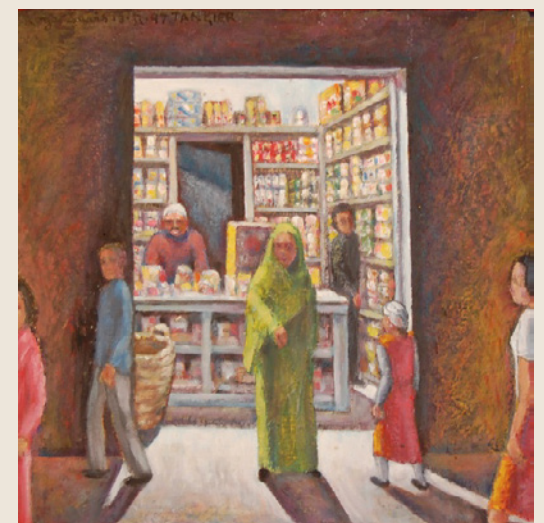
‘Rabat Bus Station, Morocco’
Roger Davis, 1997.

PLACE

Urban housing in large modern cities are not responding to the need for multigenerational co-habitation.

Older people want choices about where and how they age in place.

Royaume Du Maroc HautCommissariat Au Plan. Enquête nationale sur les personnes âgées. 2006.



‘At a Grocers in Morocco’
Roger Davis, 1997.

PROGRAMME

‘We are heading for a future with fit, active, older adults, who will need to adapt their living and working environments to cope with their slow reduction in physical, sensory, and sometimes mental, capacity’.

Harper (2013, 157).

Our **Co-Life Design Principals** are founded upon overarching design drivers of: **Empathy, Basic Needs, A Sense of Community, and Safety and Security**. Our architectural motivation is to **support affordance, enable good human-experience and independence in undertaking daily tasks, enrich social and cultural connections and enhance community, safety and privacy.**

AN ARCHITECTURE OF HOME AND COMMUNITY: A DESIGN PATTERN FOR LIVING

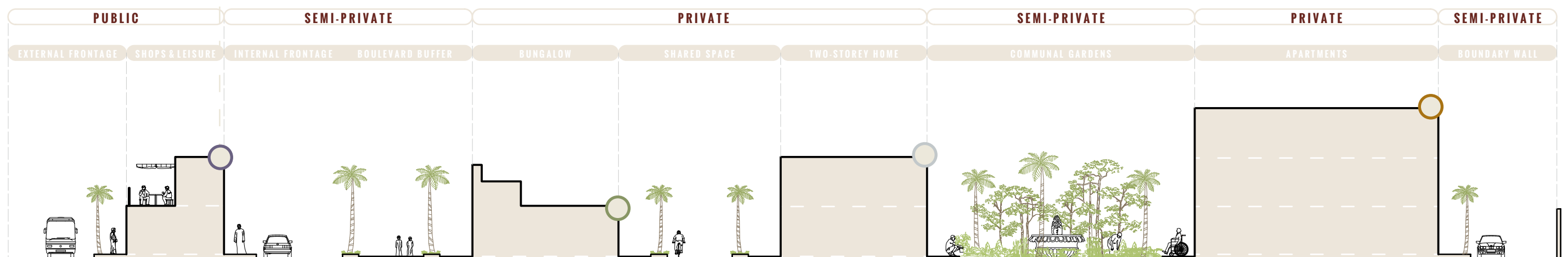
‘The art of architecture is not only to make things beautiful - nor is it only to make useful things, it is to do both at once - like a tailor who makes clothes that look good and fit well.’
Hertzberger 1991

Three-storey apartment block (x 11)

Two-storey home or ground/upper flats (x 79)

Bungalow (x 38)

Active frontage



01. The **public green-space** has been designed to replicate the existing green-space adjacent to the site. The space acts as a threshold between the busy main road and the site, providing reduced noise pollution and a safe pedestrian zone for wandering.

02. The **external active frontage** is designed as a modern bazaar/souk connecting the site to the surrounding neighbourhood. The public facade houses various shops, restaurants and bars, such as spice shops, shisha bars and rug/leather merchants.

03. The **cloister** provides a sheltered and safe walkway for residents. The semi-private space is designed to provide openings onto an external covered balcony which overlooks the active facade.

04. The **internal active frontage** has been designed to accommodate various community and leisure facilities (such as a GPs, a fitness facility and treatment rooms), workshops and studio spaces for residents. This is to support and encourage residents to stay actively involved in both the community, as well as spaces to continue with personal hobbies.

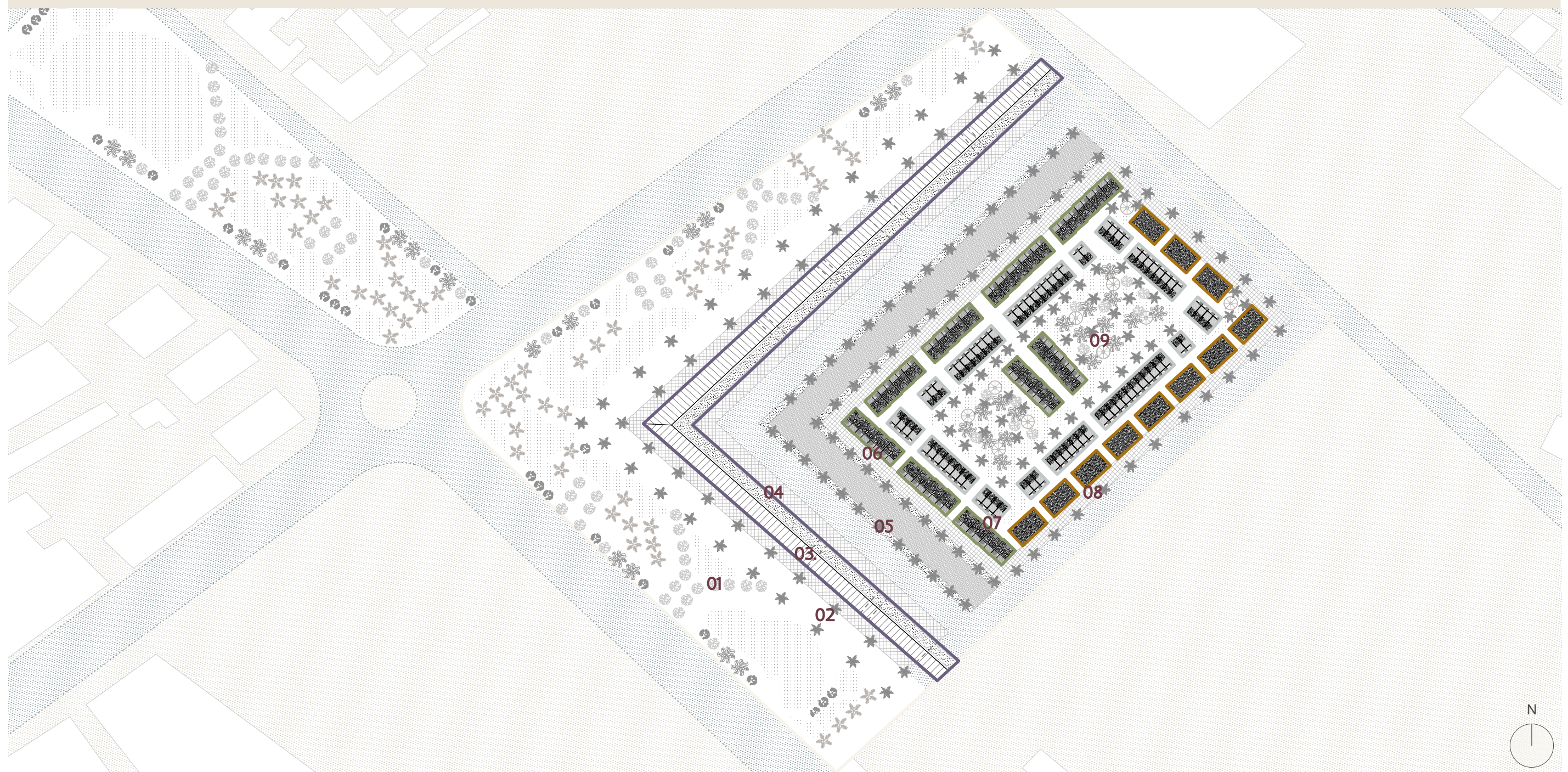
05. The **boulevard** provides a continuous walkway for safe wandering around the site and connections to the active facade to encourage interactions with the community.

06. The **retirement bungalows** have been spatially configured to be situated where daily activity is most active. This is to provide those residents with greater difficulties the connections to the surrounding community without having to travel a distance. Internally, they have been designed to lifetime homes standards, making them accessible and comfortable for all. Openings are maximised for both gardens views and social interaction with neighbours.

07. The **inclusive two-storey homes** support flexibility for personalisation and choice, whilst providing external spaces to encourage interaction with neighbours. The home caters for all and can be occupied by a family, a couple or split into ground and upper floor flats.

08. The **multi-generational apartment blocks** have been spatially configured as the boundary to the rear of the site. It acts at the ‘protective threshold’ for the inner community, wrapping around the smaller dwellings to provide safety and security. Internally, the spaces adhere to lifetime homes standard, to meet the needs of all ages. Private balconies are provided for all apartments for heightened natural daylight and ample views across the site.

09. The **ensemble of gardens** encourages social interaction and involvement of residents in the daily activities within the shared space.



Located at the junction of **Mohammed V and Avenue Moulay Rachid** the site is located at one of the major routes of the city. The site is **easily accessible from the surrounding neighbourhoods and close to public amenities**. Our **proposal acts as an anchor** at this junction, **contributes to the ‘street scenes’** (in serving the wider community) in addition to enabling the **residents to be an active part of the community**.

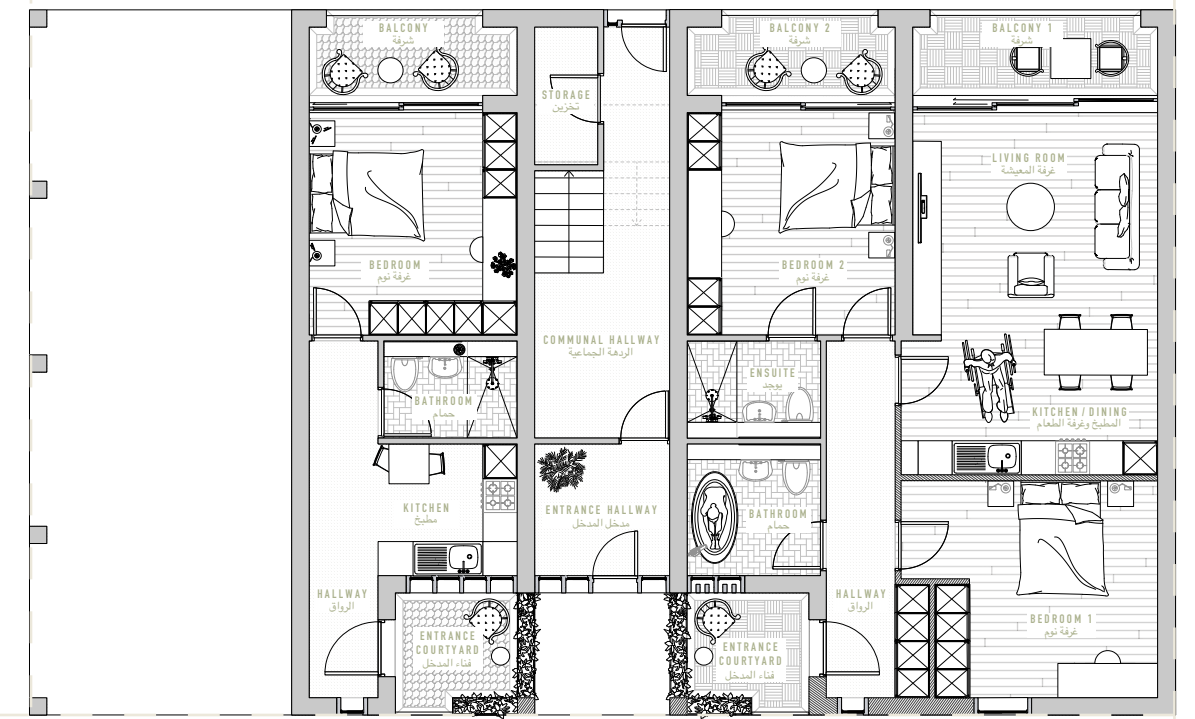
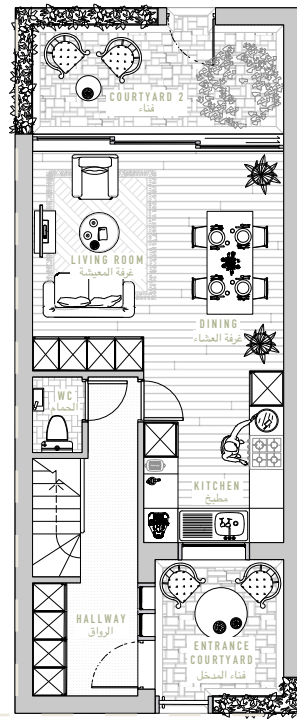
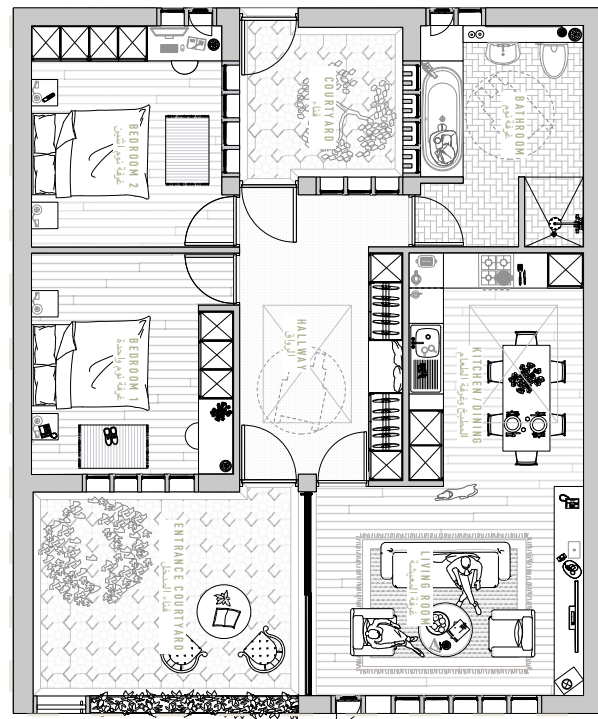
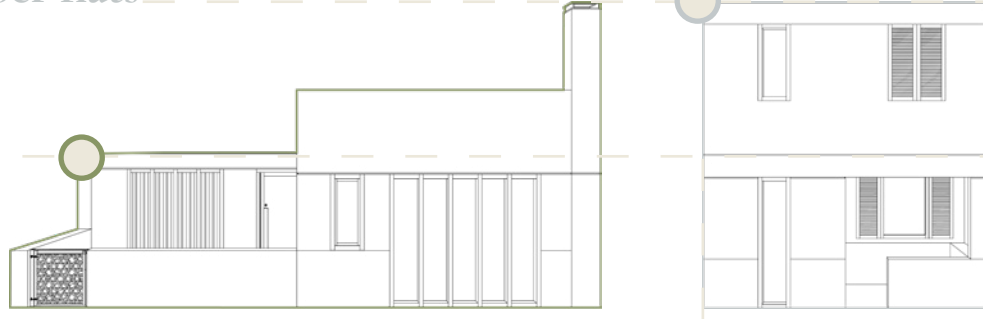
AN ARCHITECTURE OF HOME AND COMMUNITY: FLOOR PLANS

‘The longer I live, the more beautiful life becomes.’
Frank Lloyd Wright

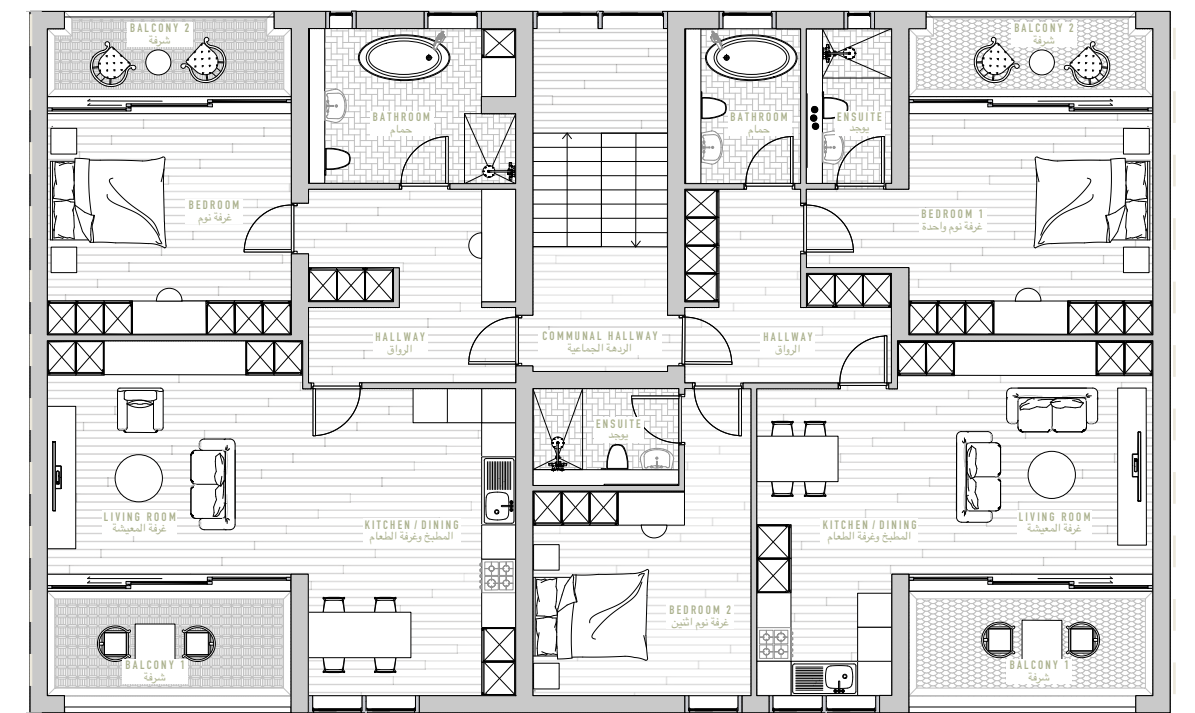
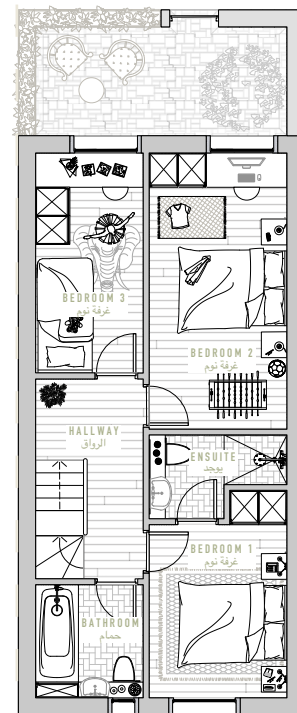
Three-storey apartment block

Two-storey home or ground/upper flats

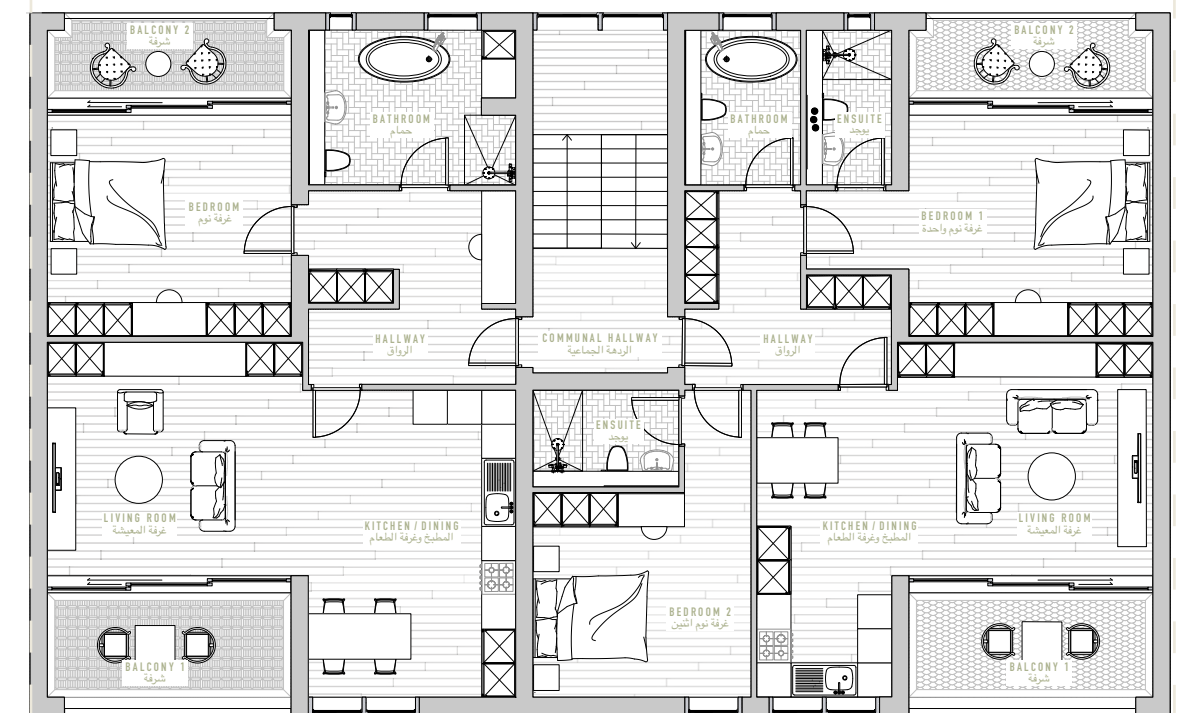
Bungalow



00



01



02

In harnessing design principals of **Spatial Legibility, Spatial Interconnectedness, Spatial Traversability, Spatial Diversity, and Spatial Aesthetics**, the proposal utilizes **qualities of the built environment** to have impact on the activity, wellbeing and social connectivity of residents.

AN ARCHITECTURE OF HOME AND COMMUNITY: FINAL VISUALS



Activity, Life and Culture. In acting as a threshold device to the more private parts of the scheme, the active frontage contributes to the public realm through the sights, smells, people and unique atmosphere from the souks, tea houses and Shisha bars.



A Rabat Co(mmunity). Contributing to the neighbourhood fabric through material and construction vocabulary the spaces (external and internal, public and private) respond to the geographic and socio-cultural context. The proposal reaches beyond its 'walls' towards enabling multi-generational connections and a sense of community.

AN ARCHITECTURE OF HOME AND COMMUNITY: FINAL VISUALS



A View from the Courtyard Pavilion. Spaces balance a mix of intimate areas and social spaces of the house and relate to the physical environment in terms of anthropometry, scale, proportion, essential movement through the spaces and connectedness to the courtyards. **'Friends meet, neighbours gather and communal life happens.'**



Crafting Home. The simplicity of everyday life is enhanced with light and well ventilated rooms. Spaces are created to seek shelter, comfort and a state of permanence. **The Rabat Co(mmunity) enhances physical and psychological well-being through responding to housing problems, and the need to build social relationships.**