



This is a repository copy of *ALG-2 and peflin regulate COPII targeting and secretion in response to calcium signaling*.

White Rose Research Online URL for this paper:  
<https://eprints.whiterose.ac.uk/182783/>

Version: Published Version

---

**Article:**

Sargeant, J., Seiler, D.K., Costain, T. et al. (6 more authors) (2021) ALG-2 and peflin regulate COPII targeting and secretion in response to calcium signaling. *Journal of Biological Chemistry*, 297 (6). 101393. ISSN 0021-9258

<https://doi.org/10.1016/j.jbc.2021.101393>

---

**Reuse**

This article is distributed under the terms of the Creative Commons Attribution-NonCommercial-NoDerivs (CC BY-NC-ND) licence. This licence only allows you to download this work and share it with others as long as you credit the authors, but you can't change the article in any way or use it commercially. More information and the full terms of the licence here: <https://creativecommons.org/licenses/>

**Takedown**

If you consider content in White Rose Research Online to be in breach of UK law, please notify us by emailing [eprints@whiterose.ac.uk](mailto:eprints@whiterose.ac.uk) including the URL of the record and the reason for the withdrawal request.



[eprints@whiterose.ac.uk](mailto:eprints@whiterose.ac.uk)  
<https://eprints.whiterose.ac.uk/>

# ALG-2 and peflin regulate COPII targeting and secretion in response to calcium signaling

Received for publication, June 10, 2021, and in revised form, November 1, 2021. Published, Papers in Press, November 8, 2021, <https://doi.org/10.1016/j.jbc.2021.101393>

John Sargeant<sup>1</sup>, Danette Kowal Seiler<sup>1</sup>, Tucker Costain<sup>1</sup>, Corina T. Madreiter-Sokolowski<sup>2</sup>, David E. Gordon<sup>3</sup>, Andrew A. Peden<sup>4</sup>, Roland Malli<sup>2</sup>, Wolfgang F. Graier<sup>2</sup>, and Jesse C. Hay<sup>1,\*</sup>

From the <sup>1</sup>Division of Biological Sciences, Center for Structural and Functional Neuroscience, University of Montana, Missoula, Montana, USA; <sup>2</sup>Molecular Biology and Biochemistry, Gottfried Schatz Research Center, Medical University of Graz, Graz, Austria; <sup>3</sup>Department of Cellular and Molecular Pharmacology, University of California, San Francisco, California, USA; <sup>4</sup>Department of Biomedical Science and Centre for Membrane Interactions and Dynamics, The University of Sheffield, Sheffield, United Kingdom

Edited by Phyllis Hanson

ER-to-Golgi transport is the first step in the constitutive secretory pathway, which, unlike regulated secretion, is believed to proceed nonstop independent of  $\text{Ca}^{2+}$  flux. However, here we demonstrate that penta-EF hand (PEF) proteins ALG-2 and peflin constitute a hetero-bifunctional COPII regulator that responds to  $\text{Ca}^{2+}$  signaling by adopting one of several distinct activity states. Functionally, these states can adjust the rate of ER export of COPII-sorted cargos up or down by  $\sim 50\%$ . We found that at steady-state  $\text{Ca}^{2+}$ , ALG-2/peflin hetero-complexes bind to ER exit sites (ERES) through the ALG-2 subunit to confer a low, buffered secretion rate, while peflin-lacking ALG-2 complexes markedly stimulate secretion. Upon  $\text{Ca}^{2+}$  signaling, ALG-2 complexes lacking peflin can either increase or decrease the secretion rate depending on signaling intensity and duration—phenomena that could contribute to cellular growth and intercellular communication following secretory increases or protection from excitotoxicity and infection following decreases. In epithelial normal rat kidney (NRK) cells, the  $\text{Ca}^{2+}$ -mobilizing agonist ATP causes ALG-2 to depress ER export, while in neuroendocrine PC12 cells,  $\text{Ca}^{2+}$  mobilization by ATP results in ALG-2-dependent enhancement of secretion. Furthermore, distinct  $\text{Ca}^{2+}$  signaling patterns in NRK cells produce opposing ALG-2-dependent effects on secretion. Mechanistically, ALG-2-dependent depression of secretion involves decreased levels of the COPII outer shell and increased peflin targeting to ERES, while ALG-2-dependent enhancement of secretion involves increased COPII outer shell and decreased peflin at ERES. These data provide insights into how PEF protein dynamics affect secretion of important physiological cargoes such as collagen I and significantly impact ER stress.

The ER-to-Golgi interface is the busiest vesicle trafficking step, transporting up to one-third of all eukaryotic proteins (1). Anterograde cargo is captured into a COPII prebudding complex containing the inner coat sec23/24 heterodimer, which binds cargo in several distinct pockets on the membrane-proximal surface of sec24 (2–5). Recruitment of

the outer coat layer, comprised of sec13/31, positions a flexible proline-rich region (PRR) loop of sec31 across the membrane-distal surface of sec23, potentiating its Sar1 GAP activity required for cargo concentration (6). Together, the inner sec23/24 and outer sec13/31 COPII coat involves polymerization of at least 24 hetero-tetramers (4).

Regulatory roles for  $\text{Ca}^{2+}$  in intracellular trafficking steps are still being elucidated. Recent work on ER-to-Golgi transport demonstrates a requirement for luminal  $\text{Ca}^{2+}$  stores at a stage following cargo folding/assembly, perhaps through the entry of  $\text{Ca}^{2+}$  into the cytoplasm where it binds and activates the vesicle budding, docking, and/or fusion machinery (7, 8). Depletion of luminal calcium with sarco-endoplasmic reticulum  $\text{Ca}^{2+}$  ATPase (SERCA) inhibitors leads to significantly reduced transport as well as a buildup of budding and newly budded COPII vesicles and vesicle proteins (7, 8). How  $\text{Ca}^{2+}$  causes these effects continues to be elusive, but part of the answer may lie with the penta-EF-hand-containing (PEF) protein adaptors that have been implicated in many  $\text{Ca}^{2+}$ -dependent cellular phenomena (9). The PEF protein apoptosis-linked gene-2 (ALG-2) acts as a  $\text{Ca}^{2+}$  sensor at ER exit sites (ERES) and stabilizes association of sec31 with ERES through direct binding to a 12-amino acid sequence on the sec31A PRR region (10–13). Most ALG-2 in cell extracts exists in a stable heterodimer with the PEF protein peflin. Peflin binds ALG-2 in a  $\text{Ca}^{2+}$ -inhibited manner (14, 15) and has been shown to suppress ER export of the cargo marker VSV-G-GFP, perhaps by modulating ALG-2 availability to bind ERES (16). Despite all of these observations, a unified model for when and how PEF proteins modulate secretion has not emerged. For example, most *in vitro* transport reconstitutions and results with purified ALG-2 have indicated that the protein is an inhibitor of vesicle budding or fusion (7, 17). On the other hand, some recent intact cell trafficking experiments indicate a suppressive role for ALG-2 based upon ALG-2 depletion (18), while we implied a stimulatory role for ALG-2 because peflin suppressed transport by antagonizing stimulatory ALG-2-sec31A interactions (16). Furthermore, work on a presumed ALG-2 ortholog in yeast, Pef1p, demonstrated an inverse relationship, wherein Pef1p binding to the sec31 PRR was

\* For correspondence: Jesse C. Hay, [jesse.hay@umontana.edu](mailto:jesse.hay@umontana.edu).

## ALG-2 and peflin regulate secretion

inhibited by  $\text{Ca}^{2+}$  and delayed coat recruitment to the membrane (19). A distinct line of investigation has suggested that sec31A function is regulated by mono-ubiquitination, and that both ALG-2 and peflin assist in the mono-ubiquitination through recruitment of the ubiquitin ligase  $\text{CUL3}^{\text{KLHL12}}$  to ERES, which was required for collagen secretion from osteosarcoma cells (20).

Here we advance understanding of PEF protein secretory regulation by demonstrating that ALG-2 binding to ERES can either stimulate or inhibit ER-to-Golgi transport depending upon ALG-2:peflin expression ratios and the nature of  $\text{Ca}^{2+}$  signals. In response to short bursts of agonist-driven  $\text{Ca}^{2+}$  signaling, ALG-2 increases outer coat targeting to ERES and stimulates transport. This response could help stimulated cells proliferate and/or replenish exhausted endocrine or exocrine secretory vesicles. On the other hand, a more relentless  $\text{Ca}^{2+}$  signal causes ALG-2 to markedly slow ER export. This novel physiological response that curtails COPII targeting could represent a protective mechanism against excitotoxicity or infection.

### Results

#### **Peflin expression levels determine ER-to-Golgi transport rates over a wide dynamic range in an ALG-2-dependent manner**

To investigate the dynamic range and functional interactions of PEF protein regulation of ER export, we forced individual, tandem, or reciprocal expression changes of the two proteins. Endogenous peflin and ALG-2 were either knocked down using transfection with siRNA or overexpressed by transfection with the wt, untagged rodent proteins in NRK cells. After  $\geq 24$  h of transfection, the initial rate of ER-to-Golgi transport of the synchronizable transmembrane protein cargo VSV- $\text{G}_{\text{ts045}}$ -GFP was determined by incubation for 10 min at the permissive temperature followed immediately by fixation and morphological quantitation of the ratio of VSV-G that has reached the Golgi versus remaining in the ER, as before (16). Figure 1A columns 1 and 2 show that as previously reported (16), peflin knockdown significantly increased VGV-G transport above basal by  $\sim 84\%$ . On the other hand, overexpression of peflin (column 3) decreased transport by 23% below basal. Interestingly, the same two manipulations of ALG-2 expression (columns 4 and 5) caused little change in transport relative to basal, indicating that at steady state, peflin expression levels are more rate-limiting. Forced peflin overexpression and underexpression thus define a dynamic range of peflin regulation of transport at steady-state  $\text{Ca}^{2+}$  of  $\sim 107\%$  of basal secretory flux (84% above basal and 23% below) in NRK cells.

We next asked whether the effects of peflin overexpression and depletion depended upon the presence of ALG-2. As shown in Figure 1A columns 4 versus 6 and 7, in ALG-2-depleted cells, forced changes in peflin expression do not change secretion, indicating that peflin is dependent upon ALG-2 to influence transport. This suggests that peflin's effector for secretion is ALG-2. Interestingly, column 1 versus 6 also indicates that when both proteins are depleted, secretion is slightly higher than in the presence of both proteins at

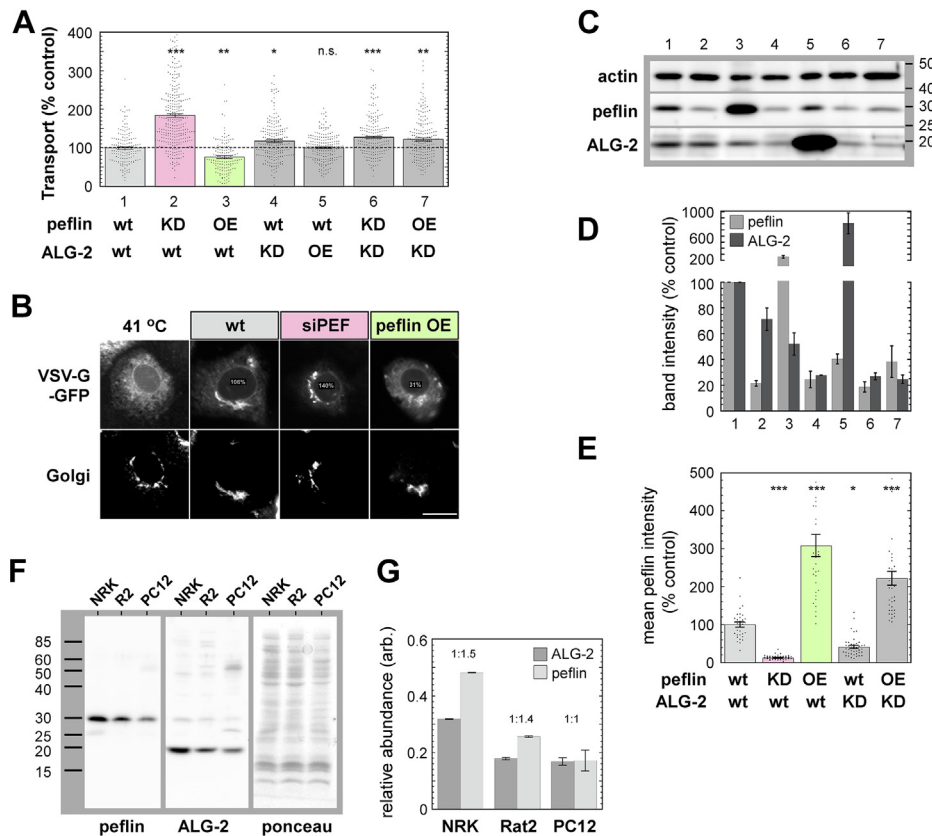
normal levels. This demonstrates that these PEF proteins are not required for transport and suggests that the two of them together exert a slightly suppressive effect on ER-to-Golgi transport under steady-state conditions.

Using a combination of quantitative Western blotting (Fig. 1, C and D) and immunofluorescence (Fig. 1E), we documented the protein expression levels during the manipulations described above. Notably, and as described before, ALG-2-peflin interactions in the cell stabilize both proteins, such that depletion of one using siRNA resulted in codepletion of the other (15, 16, 20). This complication was not severe for peflin depletion, which resulted in a  $\sim 30\%$  reduction in ALG-2 (Fig. 1D, column 2). However, depletion of ALG-2 by  $\sim 70\%$  using siRNA resulted in a comparable depletion of peflin, essentially creating a double-depletion condition (Fig. 1D, column 4). Therefore, determining the effect of peflin when ALG-2 is depleted depended upon the condition in Figure 1D, column 7, in which cells were both depleted of ALG-2 and transfected with a peflin encoding plasmid. The Western analysis indicated that peflin was only slightly restored (Fig. 1D, column 7). This particular plasmid, and NRK cells in general, suffered from a low transfection efficiency using lipofection and especially so when ALG-2 was depleted. However, for transport assays, we used peflin immunofluorescence intensity as an aid to choose cells for functional analysis. When peflin fluorescence intensities were measured for the included cells, peflin was overexpressed by over 200% in the ALG-2-depleted cells (Fig. 1E, right bar). This condition corresponds to column 7 in the transport experiment (Fig. 1A), reinforcing the conclusion that dramatic changes in peflin expression when ALG-2 is depleted do not result in transport changes. Thus, although there were significant peflin codepletion effects due to ALG-2 siRNA, they did not change the conclusions from Figure 1A that peflin expression levels dramatically affect the secretion rate in an ALG-2-dependent manner and that the two proteins together are functionally dispensable for baseline levels of ER-to-Golgi transport.

#### **Peflin binds ERES via ALG-2 and prevents its stimulatory activity**

Previous work reported localization of epitope-tagged peflin to ERES and deduced using immunoprecipitations that ALG-2 was able to mediate an interaction between peflin and sec31 (20). However, the interdependence of ALG-2 and peflin for ERES localization and the subcellular localization of endogenous peflin has not been reported.

We raised a rabbit polyclonal antibody against rat peflin and a chicken polyclonal antibody against mouse ALG-2 to be used for localization studies of the endogenous proteins. Characterization of the antibodies' reactivity toward whole-cell lysates of NRK epithelial cells, Rat2 fibroblasts, and PC12 neuroendocrine cells was documented by Western blot in Figure 1F. The crude anti-peflin serum was high affinity and specific while the affinity-purified ALG-2 antibody was less so. Quantitation of the blots (Fig. 1G), relative to stoichiometric purified protein standards of GST-peflin and GST-ALG-2,



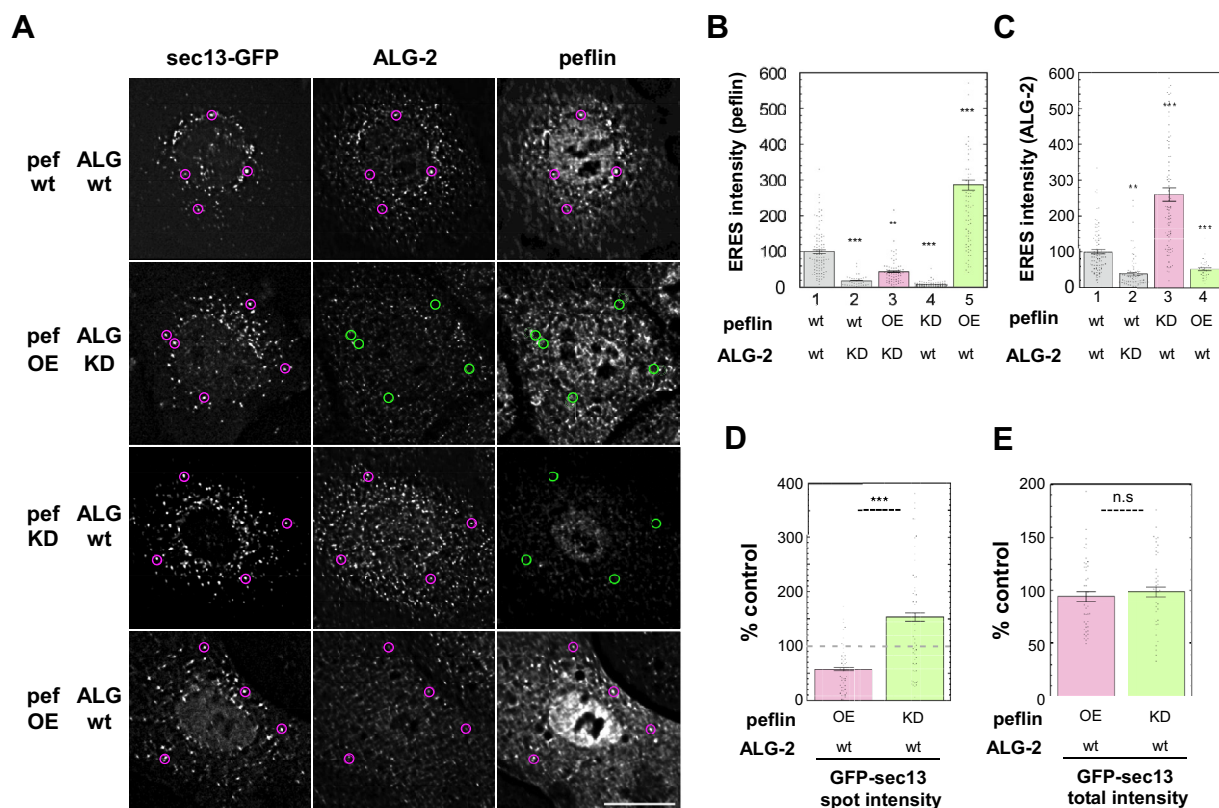
**Figure 1. Peflin expression levels define a wide dynamic range of trafficking effects in an ALG-2 dependent manner.** *A*, NRK cells were transfected with VSV-G<sub>15045</sub>-GFP with control or specific siRNAs and untagged overexpression constructs (1 μg DNA) for peflin or ALG-2. Following growth at 41 °C, cells were shifted to 32 °C for 10 min to permit transport prior to fixation. Fixed cells were immuno-labeled with mannosidase II. Each transfected cell was assigned a transport index representing trafficking of VSV-G based upon the ratio of Golgi intensity to peripheral ER fluorescence. The net transport index of each individual cell is plotted following subtraction of the mean transport index of cells kept at 41 °C, and normalization to the mean net transport index of wt cells. Approximately 200 cells were randomly quantified from each condition, and results shown are representative of at least three experiments with consistent trends. Asterisks indicate *p* values for one-way ANOVA using the Dunnet post-hoc test, which compares each value with that of the control; \**p* < 0.05; \*\**p* < 0.005; \*\*\**p* < 0.0005. Standard error is shown for each plot. *B*, example widefield images of individual cells for select conditions with their transport index indicated as percent of control. *C*, immunoblot of cell extracts left over from the transport experiment in *A*. *D*, quantitation of the blot in part *C*; two technical replicates. *E*, quantitation of peflin mean cell intensity in a selection of the conditions from part *A*. One-way ANOVA as for part *A*. *F*, Western characterization of whole-cell extracts from three cell lines using crude rabbit anti-peflin serum (1:50,000) and affinity-purified chicken anti-ALG-2 (1:200). *G*, quantitation of the blot in *F*; two technical replicates. Side lanes not shown in *F* contained dilutions of purified GST-peflin and GST-ALG-2 at a ratio that had been determined on Coomassie-stained gels to be equimolar to each other. The y-axis shows the band intensities of ALG-2 and peflin relative to their respective standards on the same exposure. From these values, the relative molar ratio of the two proteins was determined and is listed above each cell type. Image scale bar; 20 μm.

revealed that NRK cells contained roughly twice the ALG-2 and peflin expression of Rat2 cells. Despite this difference, both cell lines maintained an ALG-2:peflin ratio of approximately 1:1.5. PC12 cells, on the other hand, contained similar amounts of ALG-2 to Rat2 cells but were relatively depleted of peflin, maintaining an ALG-2:peflin ratio of approximately 1:1. These results indicate that distinct cell types maintain significantly different levels and ratios of the two proteins, potentially producing tissue-specific regulation of ER export rates.

To characterize the localization of the proteins in NRK cells, we detected the endogenous proteins using immunofluorescence. We observed diffuse, reticular, as well as distinctly punctate labeling for peflin throughout the cytoplasm (Fig. 2A, upper right). In addition, endogenous peflin was significantly concentrated in the nucleus. Due to the concentration of peflin in the nucleus, the ratios of ALG-2:peflin noted in Figure 1G are probably significantly higher outside the nucleus, with likely an excess of ALG-2 in the cytoplasm. However, our

findings indicated a higher concentration of peflin in the nucleus of NRK cells compared with a previous report in Jurkat cells (14). Nonetheless, the labeling was specific for endogenous peflin since peflin siRNA transfection reduced all types of labeling (Fig. 2A, third row, right column). Peflin cytosolic puncta noticeably colocalized with the ALG-2 cytosolic puncta previously identified as ERES (10–12), in these experiments also marked by sec13-GFP. We found that 95% of ERES defined by sec13-GFP were positive for ALG-2 and that the vast majority of ERES (>75%) were positive for both ALG-2 and peflin (Fig. S1, columns 1 and 7). To determine the interdependence of peflin and ALG-2 for localization at ERES, we manipulated their expression levels as in Figure 1 and then quantified the labeling intensity of the two proteins specifically at ERES as defined by a sec13-GFP marker. Knockdown of ALG-2 removed peflin from ERES (Fig. 2B, columns 1 versus 2) as expected due to the co-depletion phenomenon documented in Figure 1D. However, when ALG-2 was depleted,

## ALG-2 and peflin regulate secretion



**Figure 2. Peflin-ALG-2 complexes localize to ER exit sites via ALG-2, competing with other ALG-2 complexes.** NRK cells were transfected with GFP-sec13 and control or specific siRNAs and an untagged rat overexpression construct for peflin (1  $\mu$ g DNA). **A**, deconvolved widefield immunofluorescence images of cells labeled with sec13-GFP, ALG-2, and peflin. *Magenta circles* highlight ERES containing peflin or ALG-2 that colocalizes with GFP-sec13, while *green circles* note the absence of colocalization with GFP-sec13. Transfection conditions are specified to the left of images. Image scale bar; 20  $\mu$ m. Note: we believe a subset of ALG-2 spots may be inauthentic, since some bright spots are not reduced by siRNA and these are much less likely to colocalize with sec13 or peflin. Spots visible in the GFP-sec13 channel were defined as ERES. **B**, total intensity values of peflin colocalizing with ERES. Each point represents a single cell. Transfection conditions are specified below the graph and significance levels compared with column 1 are indicated above. Standard error is shown for each condition. **C**, total intensity values of ALG-2 colocalizing with ERES. **B** and **C**, one-way ANOVA as for Figure 1A. **D**, total spot intensity of GFP-sec13 in conditions with increased or decreased peflin expression levels, expressed as percent of control. **E**, total fluorescence intensity of GFP-sec13 in the same images as **D**. **D** and **E**, unpaired Student's *t* test with unequal variance; same *p*-value significance symbols as used in Figure 1A.

overexpression of peflin did not restore it to ERES (Fig. 2B, columns 1 versus 3), though peflin overexpression greatly increased peflin at ERES in the presence of ALG-2 (Fig. 2B, columns 1 versus 5). ALG-2 targeting to ERES, on the other hand, did not depend upon, but yet was buffered by peflin. Peflin depletion greatly enhanced ALG-2 targeting to ERES (Fig. 2C, columns 1 versus 3), and peflin overexpression reduced it (Fig. 2C columns 1 versus 4). Targeting of the outer COPII coat subunit sec13-GFP as indicated by the intensity of accentuated spots (Fig. 2D) mirrored the transport effects demonstrated in Figure 1A and extended the result we reported earlier for sec31A (16). That is, knockdown of peflin increased COPII targeting, potentially causing the observed increased transport, while peflin overexpression reduced COPII targeting, potentially inhibiting transport. At the same time that accentuated spots decreased and increased with peflin overexpression and knockdown, the total integrated fluorescence intensity of GFP-sec13 per cell, measured in the same set of cells, did not significantly change (Fig. 2E), arguing that the effects were due to coat localization changes rather than significant changes in coat expression.

The targeting data indicates that peflin binds ERES through ALG-2 as part of an ALG-2-peflin complex, most likely the

heterodimer species previously described (14). However, since removal of peflin increases ALG-2 at ERES, ALG-2 must also bind in other states, most likely the previously described homo-dimer for which a crystal structure is available with bound sec31A peptide (21). The high secretion caused by the lack of peflin and the low secretion caused by excess peflin are approximately equally above and below, respectively, the secretion with depletion of both proteins (Fig. 1; height of column 4 or 6 is about mid-way between that of columns 2 and 3); this suggests that cytosolic peflin does not simply act as an ALG-2 sponge that decreases transport by withdrawing stimulatory ALG-2 from ERES—if this was the case, peflin overexpression could never inhibit transport below the level seen upon depletion of both proteins. Rather, peflin-containing ALG-2 species appear to themselves inhibit transport.

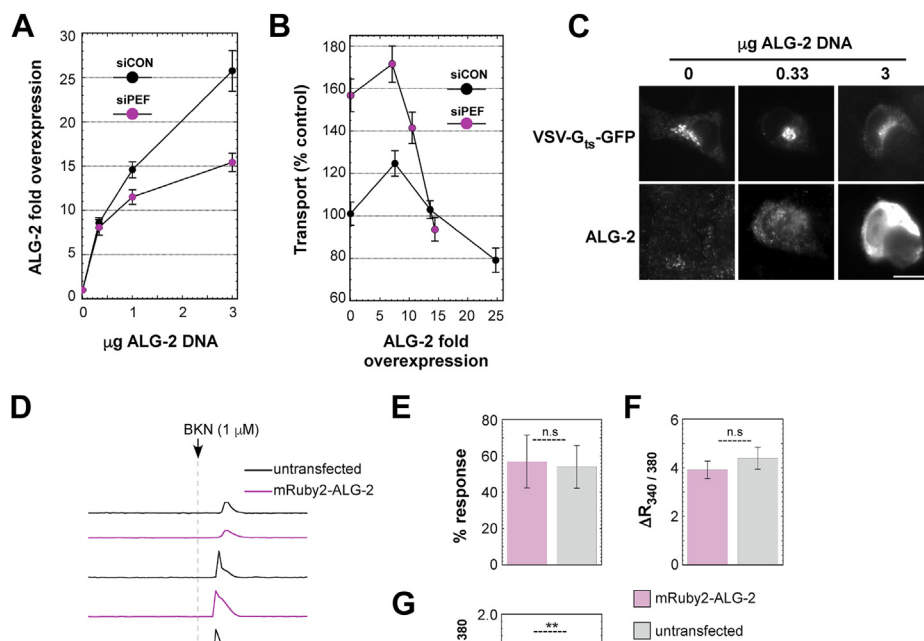
### ALG-2 can either stimulate or inhibit ER-to-Golgi transport, activities buffered by peflin

Figure 1A, columns 1 versus 5, indicated that ALG-2 overexpression did not lead to significant changes in the ER export rate. This did not fit with other data. For example, since overexpression of ALG-2 should favor ALG-2 homomeric

species over ALG-2-peflin hetero-complexes, as does a peflin knockdown, we wondered why ALG-2 overexpression did not stimulate transport. Thus, we titrated NRK cell transfections with 0.3, 1, and 3  $\mu\text{g}$  of wild-type untagged ALG-2 construct DNA, and as shown in Figure 3A, black circles, these transfections resulted in 8-, 15-, and  $\sim 25$ -fold overexpression of ALG-2 relative to control, demonstrating a titration of ALG-2 expression in individual cells. Figure 3B, black circles, then demonstrates that eightfold overexpression stimulated transport by over 20%, 15-fold overexpression (the dose employed in Fig. 1A) had no significant effect, and  $\sim 25$ -fold overexpression inhibited transport by 20%. The same titration performed in cells depleted of peflin (magenta circles) resulted in similar biphasic effects, except that the inhibition was more potent and more severe relative to no overexpression (a drop from  $\sim 155\%$  to  $\sim 95\%$  of control). This experiment indicates that the relationship between ALG-2 and the secretion rate is complicated by several competing activities. First, it indicates that ALG-2 can both stimulate and inhibit transport, with stimulation giving way to inhibition as fold overexpression increases. Second, it indicates that there is both a stimulatory and inhibitory role for ALG-2 that is independent of peflin, in

addition to the inhibitory role of ALG-2-peflin hetero-complexes implied in Figures 1A and 2D. Third, it indicates that ALG-2-peflin hetero-complexes, though inhibitory, must buffer against the other inhibitory activity of ALG-2, revealed in this experiment, which is independent of peflin. Thus Figures 1–3, completed at steady-state  $\text{Ca}^{2+}$ , suggest at least three distinct activities for ALG-2 and peflin complexes: an inhibitory but buffering role for ALG-2-peflin hetero-complexes, a stimulatory role for ALG-2 without peflin, and an inhibitory role for ALG-2 without peflin.

Since ALG-2 overexpression in the above experiments could potentially alter  $\text{Ca}^{2+}$  homeostasis due to ALG-2's ability to bind  $\text{Ca}^{2+}$  in the micromolar range, or interact with other  $\text{Ca}^{2+}$ -related proteins, we performed control experiments to examine whether ALG-2 overexpression was accompanied by measurable changes in  $\text{Ca}^{2+}$  handling. Here, we used transfection with mRuby2-ALG-2 followed by analysis of equal numbers of transfected and nontransfected cells within the same fields during live  $\text{Ca}^{2+}$  imaging with FURA-2. Only bright red cells were analyzed as overexpressing cells, and no attempt was made to distinguish effects at different levels of overexpression. We chose 1  $\mu\text{M}$  bradykinin as a  $\text{Ca}^{2+}$  agonist



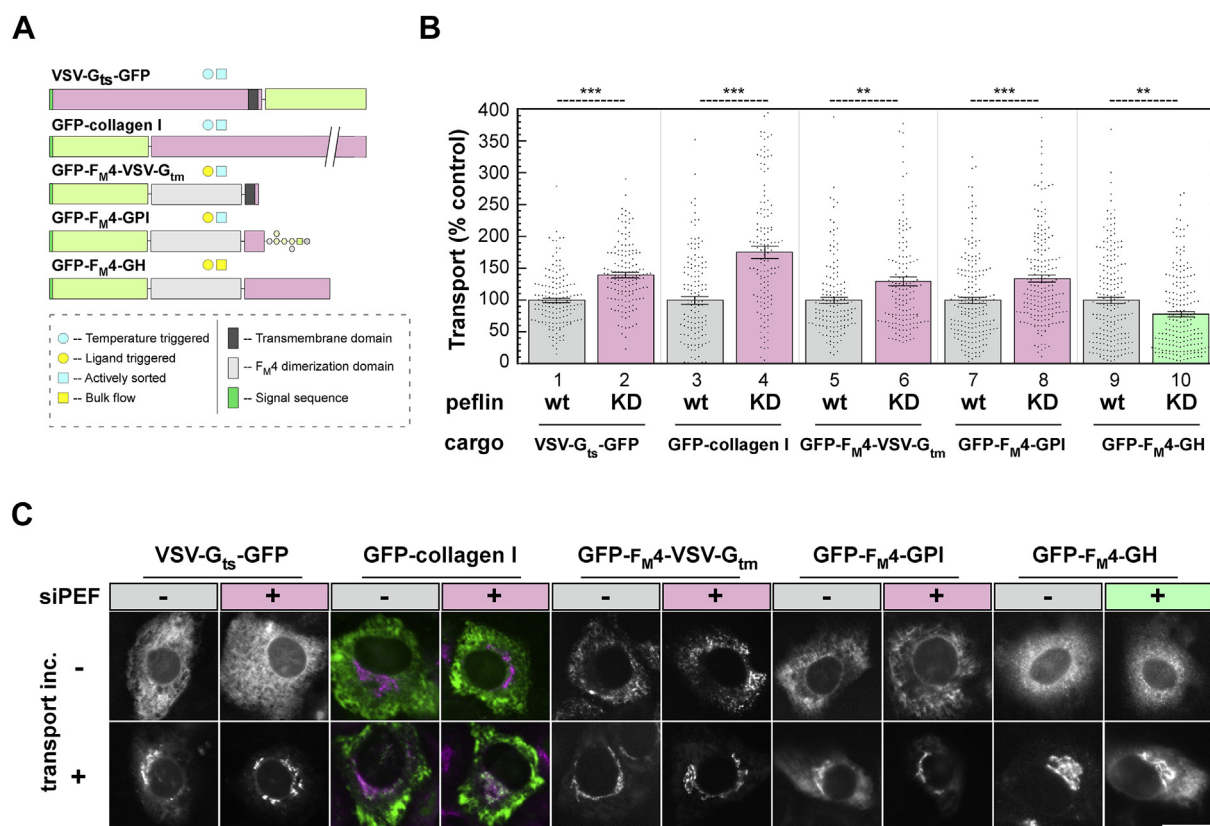
**Figure 3. ALG-2 can inhibit or promote ER-to-Golgi transport independently of peflin.** NRK cells transfected with control or peflin siRNAs were then retransfected with VSV- $G_{ts045}$  DNA and differing amounts of ALG-2 DNA. Following immunofluorescence labeling, each condition was assayed for mean ALG-2 fluorescence and accompanying transport index on a per cell basis. A, micrograms of ALG-2 DNA used in transfections versus fold overexpression determined by immunofluorescence quantitation. Fold overexpression for each cell was calculated as its own ALG-2 intensity divided by the mean intensity of untransfected cells. Mean  $\pm$  SEM (N  $\sim$  100) is shown for each point. B, the mean ER-to-Golgi transport value correlated to the mean ALG-2 fold overexpression level. C, example widefield images of individual siCON cells for select conditions. D, representative single-cell cytosolic  $\text{Ca}^{2+}$  traces measured using FURA-2 in NRK cells. Traces are from the same coverslip, on which both mRuby2-ALG-2-transfected and nontransfected cells were analyzed in parallel. 1  $\mu\text{M}$  bradykinin (BKN) was added after 6 min of perfusion in growth medium. Nonresponding cells were present but are not shown. E, quantitation of the percentage of cell traces per coverslip that showed a  $\text{Ca}^{2+}$  increase within 2 min of adding BKN. N = 3 runs, 40 cells per run per condition. F, quantitation from responding cells only, of maximum peak height minus mean baseline value prior to BKN addition; N = 60 cells per condition, combined from three runs. G, mean baseline value for 5 min prior to BKN addition; N = 60 cells per condition, combined from three runs. E and F, unpaired Student's *t* test with unequal variance; same *p*-value significance symbols as used in Figure 1A. Image scale bar, 20  $\mu\text{m}$ .

## ALG-2 and peflin regulate secretion

because it produces simple, immediate, synchronous responses in NRK cells that are readily quantified. As shown in Figure 3D, a very similar range of response strengths and kinetics were observed in both untransfected and ALG-2-transfected cells. Only rarely did any cells of either type produce subsequent  $\text{Ca}^{2+}$  oscillations. Furthermore, there was no significant difference in the percentage of cells that exhibited an immediate response to agonist between wild-type and ALG-2 OE cells, when results from three experiments were combined (Fig. 3E). Furthermore, the quantity of  $\text{Ca}^{2+}$  released, estimated by peak height minus baseline ( $\Delta R$ ), was not significantly different between the two types of cells (Fig. 3F). Nonetheless, we did detect a slight but significant decrease in the baseline cytosolic  $\text{Ca}^{2+}$ , implying that ALG-2 overexpression does measurably buffer cytosolic  $\text{Ca}^{2+}$  (Fig. 3G) and could potentially buffer  $\text{Ca}^{2+}$  transients as well. On the other hand, we conclude that ALG-2 OE did not grossly perturb the releasable  $\text{Ca}^{2+}$  store or activity of ER  $\text{Ca}^{2+}$  channels. This information points to caution interpreting the ALG-2 overexpression study and to future studies of  $\text{Ca}^{2+}$  signaling employing PEF protein overexpression, since effects on secretion *per se* cannot be completely dissociated from effects on  $\text{Ca}^{2+}$  buffering.

## Peflin-ALG-2 complexes affect ER export similarly for multiple COPII client cargos, but not bulk flow cargo, and influence ER stress

A recent study reported that in an osteosarcoma cell line, peflin depletion inhibited ER-to-Golgi transport of collagen I, implying that peflin was required for collagen export from the ER (20). Since our results have instead suggested a suppressive role for peflin in VSV-G export, we investigated whether peflin may have opposite effects on different actively sorted cargoes. To address this, we expressed different cargoes in NRK cells and tested the effects of peflin depletion. These cargoes are schematized in Figure 4A. As seen in Figure 4B, compared with VSV-G-GFP, export of GFP-collagen I was even more strongly stimulated by peflin depletion (columns 1 and 2 *versus* 3 and 4), supporting a suppressive effect of peflin under normal conditions. Since both VSV-G<sub>ts045</sub>-GFP and collagen export were synchronized by incubation at a restrictive temperature followed by a shift to permissive temperature, we wanted to rule out that the temperature shift was involved in the suppressive effects of peflin. We created novel reporter constructs containing a conditional aggregation domain, F<sub>M</sub>4, that aggregates in the ER and prevents export until a small-molecule drug, AP21998, is provided (22), causing synchronous ER



**Figure 4. Peflin suppresses ER export of multiple actively exported cargos in NRK cells.** *A*, schematic of cargo constructs used in *B* and *C*. *B*, the initial rate of ER-to-Golgi transport was determined as in Figure 1 for NRK cells transfected with the indicated constructs in the presence of control or peflin siRNA. For VSV-G<sub>ts045</sub>-GFP and GFP-collagen I, transfected cells were placed at 41 °C to build up cargo in the ER. Transfer of cells to 32 °C provided a synchronous wave of transport to the Golgi. For GFP-F<sub>M</sub>4-VSV-G<sub>tm</sub>, GFP-F<sub>M</sub>4-GPI, and GFP-F<sub>M</sub>4-GH, cargo was accumulated in the ER under normal growth conditions at 37 °C, and transport was initiated by addition of the F<sub>M</sub>4-specific ligand. Mean ± SEM is shown for each condition, as well as approximate *p* values for the indicated unpaired T tests. *C*, example widefield images of individual cells for select conditions. For GFP-collagen I, a merge of GFP-collagen I and the Golgi marker Mannosidase II is shown since otherwise it was difficult to identify the Golgi following transport; all other images show the GFP channel only. Image scale bar; 20 μm.

export. The first construct included GFP as a luminal domain followed by F<sub>M</sub>4 and the VSV-G transmembrane domain (GFP-F<sub>M</sub>4-VSV-G<sub>tm</sub>), which contains a di-acidic COPII sorting motif on the cytosolic surface. The second construct was similar but included the GPI anchor from CD55 at the C-terminus instead of a transmembrane domain (GFP-F<sub>M</sub>4-GPI). GPI anchors function as an export sequence recognized and sorted in a p24-dependent manner (23). Both constructs, when triggered by ligand AP21998, were actively transported from the ER to the Golgi over a 10-min time course. For both constructs, peflin depletion caused a highly significant increase in ER-to-Golgi transport (Fig. 4, columns 5–8). A third construct, GFP-F<sub>M</sub>4-GH (24), was fully luminal, contained human growth hormone, and lacked any ER export sequence. Peflin depletion caused a significant decrease in ER export of this bulk flow construct. This result implies that peflin depletion does not act simply to accelerate vesicle production, but rather stimulates COPII function broadly—including its sorting function. It is also consistent with a recent study demonstrating that COPII sorting works in part by exclusion of proteins that are not actively included (25). In summary, Figure 4 establishes that the stimulatory effects of peflin depletion on transport are not restricted to high-temperature-synchronized reporter cargoes, and that four actively sorted cargoes, VSV-G<sub>ts045</sub>-GFP, GFP-collagen I, GFP-F<sub>M</sub>4-VSV-G<sub>tm</sub>, and GFP-F<sub>M</sub>4-GPI, containing three distinct ER export signals—but not bulk flow cargo—are exported more efficiently when peflin is depleted in NRK cells. Thus peflin, it appears, is a *bona fide* suppressor of COPII function.

NRK cells may not be an adequate model for ER-to-Golgi transport for certain cargoes, for example, collagen I, which require specific cargo adaptors and modified vesicles for efficient export (26–29). The vast majority of collagen I is secreted by fibroblasts, osteoblasts, and chondrocytes. To address whether peflin also suppressed secretion of collagen I in cells whose normal function includes secretion of collagen I in abundance, we tested the effects of peflin depletion on endogenous collagen I secretion in Rat2 embryonic fibroblasts. The collagen I precursor, procollagen I folds inefficiently in the ER and misfolded procollagen undergoes degradation by noncanonical autophagy at ERES (30). To be certain that nonsecretory collagen fates potentially affected by peflin expression did not interfere with our assay for ER-to-Golgi transport, we monitored total cell fluorescence (TCF) of endogenous collagen I in addition to the ER-to-Golgi transport index. We measured ER-to-Golgi transport and collagen I TCF in the same cells with and without peflin depletion and found that peflin depletion increased the ER-to-Golgi transport index by 75% (Fig. 5A) but had no significant effect on collagen I TCF (Fig. 5B). As shown in Figure 5C, collagen I TCF was quantitative and reflected collagen I content since titration of cells with a collagen I-specific siRNA resulted in distinct, decreasing TCF values. Furthermore, Western blotting demonstrated an 83% depletion of peflin in Rat2 cells (Fig. 5E). Together these data indicate that peflin depletion dramatically increases transport of endogenous collagen I from the ER to Golgi in fibroblasts and does not appear to affect collagen degradative pathways.

So far we have shown that dramatically increasing the ALG-2 to peflin expression ratio can accelerate secretion of multiple cargoes. This suggests that decreasing peflin expression or another means of favoring the positive activity of ALG-2 could potentially relieve ER stress. To begin testing this idea, we utilized porcine aortic endothelial cells (PAECs), primary cells that undergo cellular ageing and senescence after passaging five times (P5) *in vitro*. As recently demonstrated (31), P5 PAECs display ER Ca<sup>2+</sup>-driven mitochondrial overload, oxidative stress, as well as profoundly increased unfolded protein response (UPR) signaling and expression of CHOP, an UPR transcription factor involved in the transition from UPR to apoptosis (32). Under these Ca<sup>2+</sup> stress conditions, we found by quantitative reverse-transcription PCR (qRT-PCR) that a 60% knockdown of peflin, using siRNA, resulted in a specific 45% reduction in expression of the UPR target gene GRP78 and a 55% reduction of CHOP (Fig. 5F). This demonstrates that peflin expression exacerbates life-threatening ER stress in aging endothelial cells and that activation of secretion by ALG-2 can in principle relieve this burden.

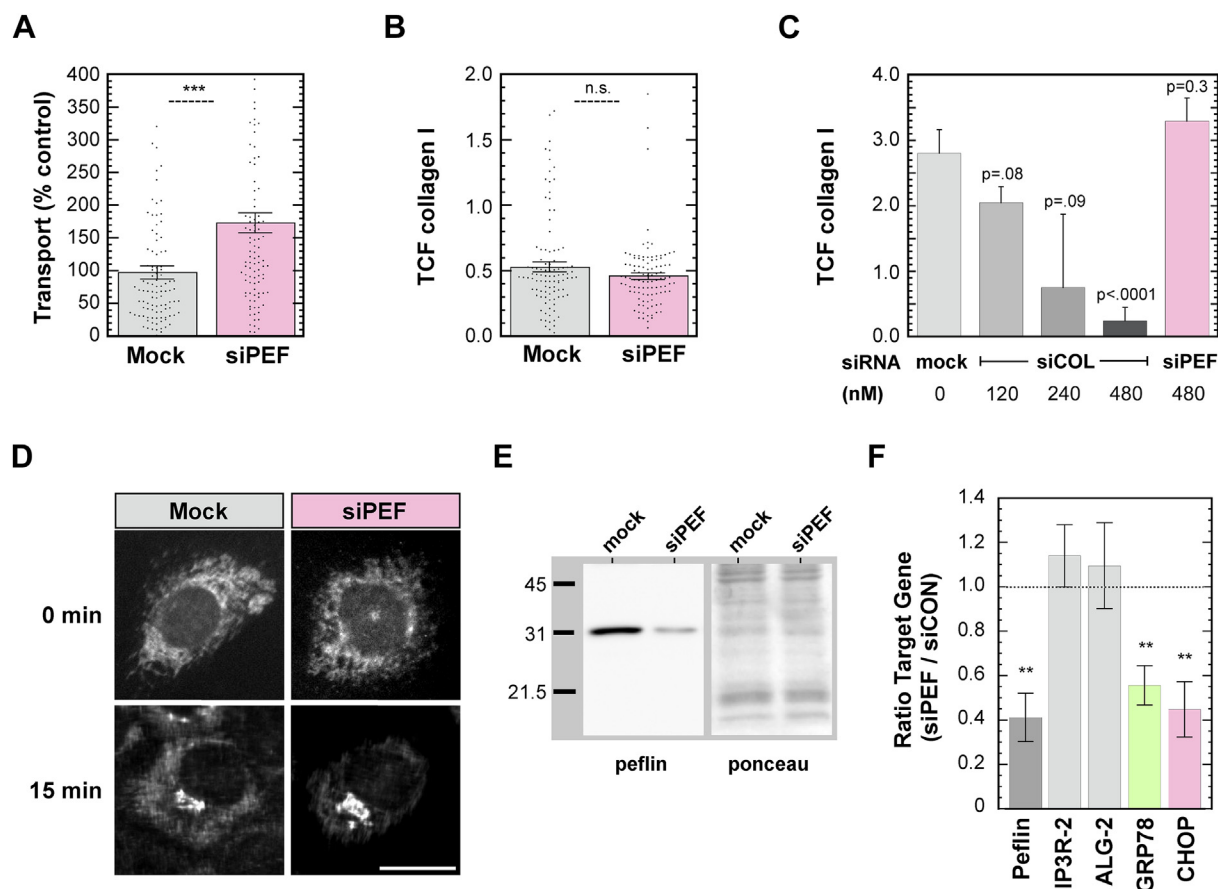
#### *In NRK cells, ALG-2 depresses ER export in response to sustained Ca<sup>2+</sup> agonist stimulation*

Since peflin and ALG-2 are regulated by Ca<sup>2+</sup> binding in NRK cells, we tested whether their ability to regulate ER-to-Golgi transport was affected by cytoplasmic Ca<sup>2+</sup> signaling. Histamine receptors present on many cell types activate phospholipase C *via* G<sub>Q</sub> to stimulate Ca<sup>2+</sup> release by IP<sub>3</sub> receptor channels on the ER. As shown in Figure 6A (black circles), 10 min of ER-to-Golgi transport initiated after increasing times of exposure to histamine indicated that initially and for up to 30 min of exposure, no significant modulation of transport occurred. However, by 60 min of exposure, ER-to-Golgi transport was significantly reduced, with continued reduction for up to 150 min, wherein transport was reduced by 40% below basal. Thus, NRK epithelial cells respond to sustained Ca<sup>2+</sup> agonist exposure by sharply curtailing ER secretory output, a new phenomenon we termed Ca<sup>2+</sup>-activated depression of ER export (CADEE).

We next tested the involvement of PEF proteins in the down-modulation. Significantly, the Ca<sup>2+</sup>-dependent modulation of transport was entirely dependent upon the presence of PEF proteins, since knockdown of ALG-2 (which also causes a co-knockdown of peflin, Fig. 1, C and D) prevented any significant change in transport over the same timecourse (Fig. 6A, green circles). The PEF protein-dependent activation mechanism, however, did not require peflin, since peflin knockdown (which leaves at least 70% of ALG-2 intact, and increases its presence at ERES, Figs. 1 and 2) did not prevent a histamine-activated decrease in ER-to-Golgi transport (Fig. 6A, magenta circles). When depleted of peflin, however, ER export always remained well above control levels, indicating that although peflin is not the trigger, it still exerts a strong suppressive role throughout the Ca<sup>2+</sup> signaling effect. Furthermore, Figure 6C demonstrates that overexpression of peflin inhibited transport (Fig. 6C, columns 1 *versus* 3), as shown earlier, but also



## ALG-2 and peflin regulate secretion



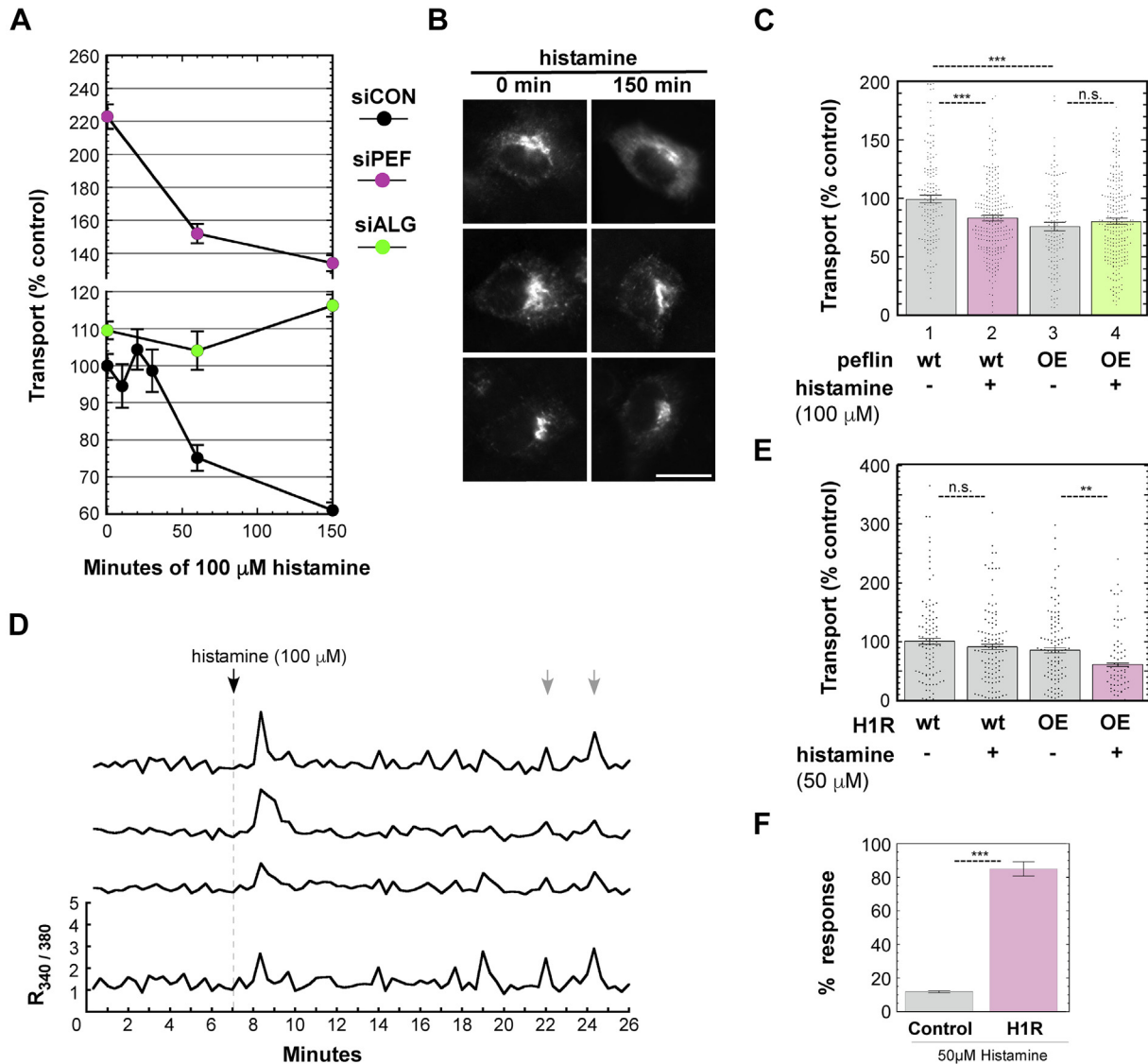
**Figure 5. Peflin expression suppresses ER export of endogenous collagen I in Rat2 fibroblasts and facilitates proapoptotic UPR signaling in PAECs.** Rat2 cells were transfected with the plasma membrane marker pCAG-mGFP in the presence or absence of peflin siRNA. Following growth at 41 °C for 24 h, cells were shifted to 32 °C with ascorbate-supplemented medium for 15 min to allow transport prior to fixation. *A*, ER-to-Golgi transport assay employing collagen I immunofluorescence intensity in the ER and Golgi. *B*, the same cells from *A* were analyzed for total cell fluorescence of collagen (see [Experimental procedures](#)). *C*, validation of immunofluorescence assay for total cell fluorescence of collagen I. Cells were transfected with different concentrations of collagen I siRNA or an siRNA for peflin. Standard error and *p* values (*versus* mock) are shown for each plot. *D*, example widefield images of collagen I immuno-labeling for select conditions in individual cells. *E*, Western immunoblot on cells from part *A* and *B*, demonstrating an 83% depletion of peflin. *F*, peflin depletion in P5 PAECs reduces GRP78 and CHOP expression. Senescent P5 PAECs were subjected to control or peflin siRNA transfection and grown under standard conditions for 3 days prior to lysis and analysis by qRT-PCR for expression of several mRNAs as indicated beneath the plot. Results are shown as the ratio of mRNA expression in siPEF cells to that in siCON cells for each mRNA. Bars show mean  $\pm$  SEM for three complete experiments conducted on different days using cells from different donors. *p* values indicate probabilities that the obtained ratios are equal to 1.0 (the null hypothesis). Image scale bar; 20  $\mu$ m.

protected against any inhibitory effects of histamine signaling ([Fig. 6C](#), columns 3 and 4). Together these results imply that the inhibitory effect of ALG-2-peflin hetero-complexes is an independent inhibitory state that can compete with a distinct, inhibitory ALG-2 activity during histamine signaling. One possibility is that histamine signaling activated the same inhibitory activity of ALG-2 observed when ALG-2 was over-expressed at steady-state  $Ca^{2+}$ , which was also independent of peflin yet buffered against by ALG-2-peflin hetero-complexes ([Fig. 3B](#)).

To investigate the nature of the  $Ca^{2+}$  signals that lead to CADEE, we performed FURA-2  $Ca^{2+}$  imaging in wild-type NRK cells. As shown in [Figure 6D](#) by four representative single-cell traces, 100  $\mu$ M histamine led to continuing  $Ca^{2+}$  oscillations for the duration of the recording period, 19 min. Persistent  $Ca^{2+}$  oscillations in the same field of confluent NRK cells often display synchronous activity (gray arrows). Since 100  $\mu$ M histamine, in contrast to 1  $\mu$ M bradykinin ([Fig. 3D](#)),

led to persistent  $Ca^{2+}$  oscillations, perhaps the persistence of  $Ca^{2+}$  stimulation is important for the time-dependent induction of CADEE observed in [Figure 6A](#). This is also supported by the observation that bradykinin produces CADEE when applied in very low amounts (100 pM–1 nM; not shown), but does not do so when using high concentrations, which, as shown in [Figure 3D](#), result in immediate downregulation after an initial response. One caveat to the experiment in [Figure 6C](#) is that peflin OE, through overabundance of cytosolic EF hands, may have dampened the actual  $Ca^{2+}$  concentrations somewhat (see [Fig. 3, C–G](#) for ALG-2 OE). Due to the inability to produce a functional fluorescent peflin construct (our experience and (20)), this was not directly tested.

While the histamine effect was repeatable numerous times, we found that NRK cells would occasionally respond not at all to histamine, a phenomenon that tended to occur in several experiments in a row, perhaps indicating that specific lots of FBS or other unknown environmental factors might be



**Figure 6. Ca<sup>2+</sup>-activated depression of ER export is mediated by ALG-2 independently of peflin.** *A*, NRK cells were transfected with VSV-G<sub>T5045</sub>-GFP along with control, ALG-2, or peflin siRNAs. Transfected cells were exposed to 100 μM histamine for 0 to 150 min at the nonpermissive temperature prior to shift to the permissive temperature for 10 min, and transport was quantitated as in Figure 1A. Mean ± SEM is shown for each point; N ~ 150 cells per condition. *B*, example widefield images of individual cells for select conditions. *C*, the rate of ER-to-Golgi transport following peflin overexpression (1 μg DNA) and/or 100 μM histamine exposure for 150 min was determined as in Figure 1. *D*, representative single-cell cytosolic Ca<sup>2+</sup> traces measured using FURA-2 in wild-type NRK cells. Traces are from the same coverslip. 100 μM histamine was added after 7 min of perfusion in growth medium. Nonresponding cells were present but are not shown. *Gray arrows* mark synchronous Ca<sup>2+</sup> oscillations. *E*, transport index for NRK cells transfected with VSV-G alone (“wt”) or with VSV-G and a self-cleaving mCherry/H1R construct (“OE”). Only cells with red fluorescence and VSV-G fluorescence were analyzed for transport in the right two bars. Cells were exposed to ±50 μM histamine for 150 min prior to transport assay. *F*, single-cell cytosolic Ca<sup>2+</sup> traces were obtained using FURA-2 in NRK cells, either untransfected or transfected with mCherry/H1R, with 50 μM histamine added half-way through the runs. Shown is quantitation of the percentage of cell traces per coverslip that showed a clear Ca<sup>2+</sup> increase within 2 min of adding histamine. N = 4 runs (control) and 2 runs (transfected). Transfected cells were included only if displaying bright red fluorescence. *C*, *E* and *F*, unpaired Student’s *t* test with unequal variance; same *p*-value significance symbols as used in Figure 1A. Image scale bar; 20 μm.

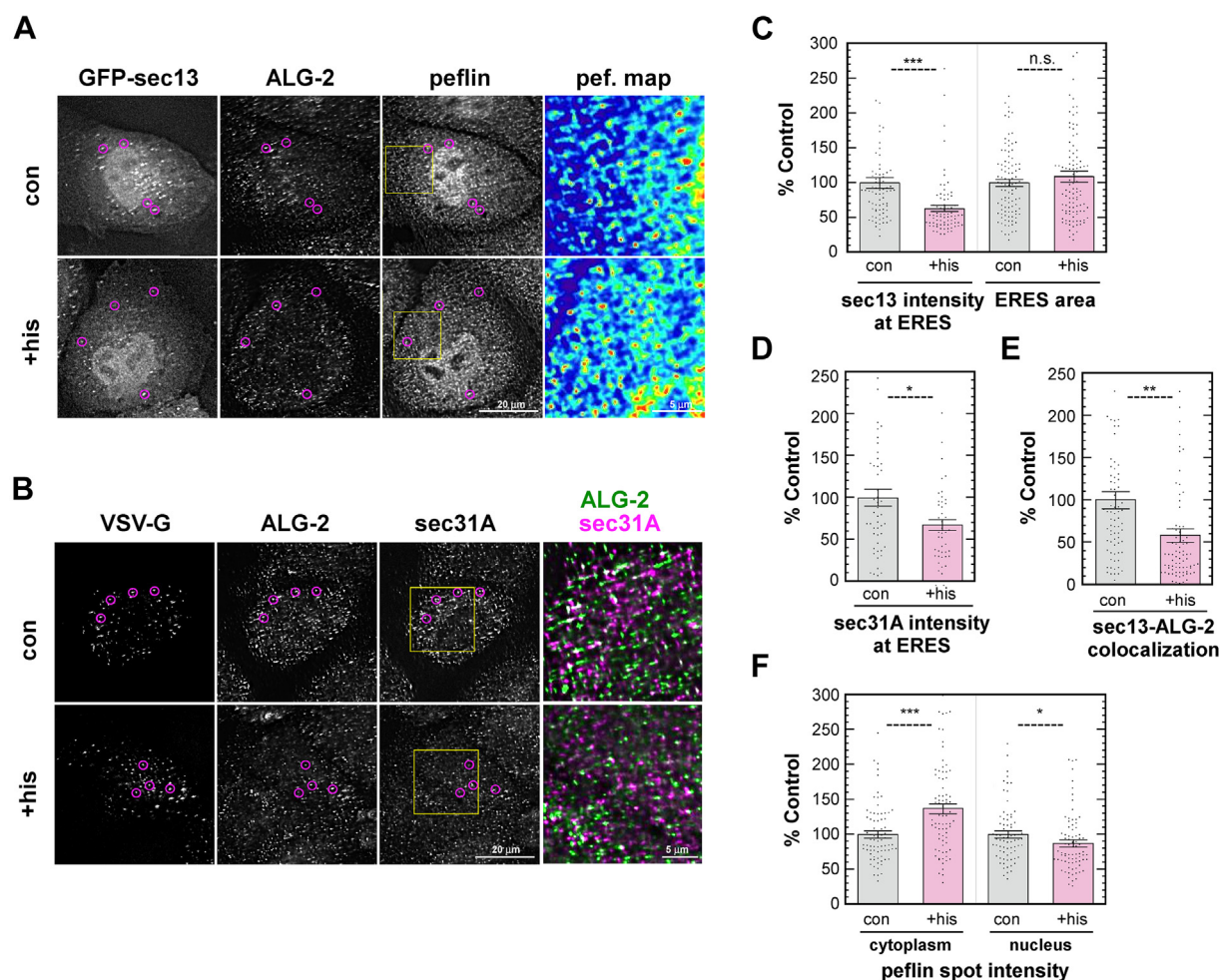
affecting histamine responsiveness. This gave us the opportunity to directly assess the involvement of a single receptor system in the CADEE phenomenon. As shown in Figure 6E, in a single experiment NRK cells that were unable to modulate secretion in response to 50 μM histamine produced significant CADEE when transfected with the wild-type H1 histamine receptor, considered the main histamine receptor in the kidney (33). Furthermore, the self-cleaving mCherry/H1R construct allowed us to distinguish H1R-transfected and -untransfected cells side by side during Ca<sup>2+</sup> imaging; we found that H1R overexpression dramatically increased the sensitivity of NRK

cells to 50 μM histamine (Fig. 6F). The experiments in Figure 6, E and F defined a receptor system leading to CADEE in NRK cells.

**Sustained Ca<sup>2+</sup> signaling decreases targeting of the COPII outer coat and increases targeting of peflin to ERES**

To investigate the mechanism of the Ca<sup>2+</sup>-activated depression of ER export phenomenon, we monitored: outer coat subunits, peflin, ALG-2, and cargo at ERES by immunofluorescence microscopy in NRK cells with and without histamine treatment. Figure 7 parts A and B show representative

## ALG-2 and peflin regulate secretion



**Figure 7. Histamine stimulation decreases outer COPII coat and increases peflin targeting to ERES.** *A*, NRK cells were transfected with GFP-sec13, treated with or without histamine for 2.5 h, fixed and immuno-labeled for endogenous proteins. Shown are representative deconvolved images. Magenta circles mark several ERES positive for all three markers. GFP-sec13 intensity was lower at ERES in histamine-treated cells, while peflin intensity was higher. Peflin heatmap panels illustrate that there are more yellow/red objects in the cytoplasm following histamine treatment. *B*, NRK cells were transfected with the transmembrane cargo VSG- $G_{ts045}$ , treated  $\pm$  histamine for 150 min at 41 °C, incubated for 45 s at 32 °C, fixed, immuno-labeled and displayed as in *A*. The conformation-specific VSV-G antibody used only recognizes assembled trimers. Sec31A intensity at ERES decreased upon histamine treatment, producing decreased colocalization with ALG-2, illustrated in the merged panels. Image scale bar dimensions are indicated above bars. *C*, *left*, an ROI was generated using ALG-2/peflin-colocalized spots to mark ERES and used to interrogate mean intensity in the unmodified GFP-sec13 channel. *Right*, the area of spots that had colocalized ALG-2 and peflin. *D*, using an ERES ROI generated from colocalized ALG-2 and VSV- $G_{ts045}$  spots, total intensity of sec31A was measured. *E*, shows the total area of spots that had both GFP-sec13 and ALG-2. *F*, *left*, peflin total spot intensity of cytoplasmic peflin. *Right*, the same calculation was performed for peflin particles inside the nucleus. In all plots, binary image masks were used to measure intensities on the unmodified images (see [Experimental procedures](#) for details). Each dot represents data from a single cell, with the mean and SEM indicated. Significance determined by unpaired Student's *t* test with unequal variance; same *p*-value significance symbols as used in [Figure 1A](#).

images with different markers, which when quantitated revealed several significant changes. Most notably, at ERES containing ALG-2 and peflin, the outer coat labeling decreased in intensity. For example, using spots that contain ALG-2 and peflin to define ERES of interest, we found that GFP-sec13 intensity decreased by 40% at those ERES after histamine treatment ([Fig. 7C](#), left). This effect was due to a real change in sec13 intensity and was not a result of a change in the area of the regions of interest interrogated ([Fig. 7C](#), right). A similar 35% decrease was observed when measuring endogenous sec31A intensity using ALG-2 and the cargo VSV-G to define the measured ERES ([Fig. 7D](#)), extending the trend to both subunits of the outer coat. If CADEE involved decreased targeting of outer coat to ERES by ALG-2, one prediction would be decreased colocalization of outer coat and ALG-2.

[Figure 7E](#) demonstrates that there was a 40% decrease in GFP-sec13/ALG-2 overlap upon histamine treatment. Furthermore, the observed decrease in outer coat/ALG-2 overlap was not due to a detectable decrease in ALG-2 (data not shown), reinforcing the significance of decreased outer coat targeting ([Fig. 7](#), *C* and *D*) as the driver of decreased colocalization. While the presence of ALG-2 under steady-state conditions has been implicated in stabilization of the outer coat ([10](#), [13](#)), our results may imply a role, under sustained  $Ca^{2+}$ -signaling conditions, in which ALG-2 destabilizes the outer coat instead. Interestingly, despite the decrease in outer coat, we did not observe a decrease in GFP-sec13-peflin colocalization in the same cells (data not shown). This unexpected finding appeared to be due to a  $Ca^{2+}$ -induced redistribution of peflin that counteracted the effects on

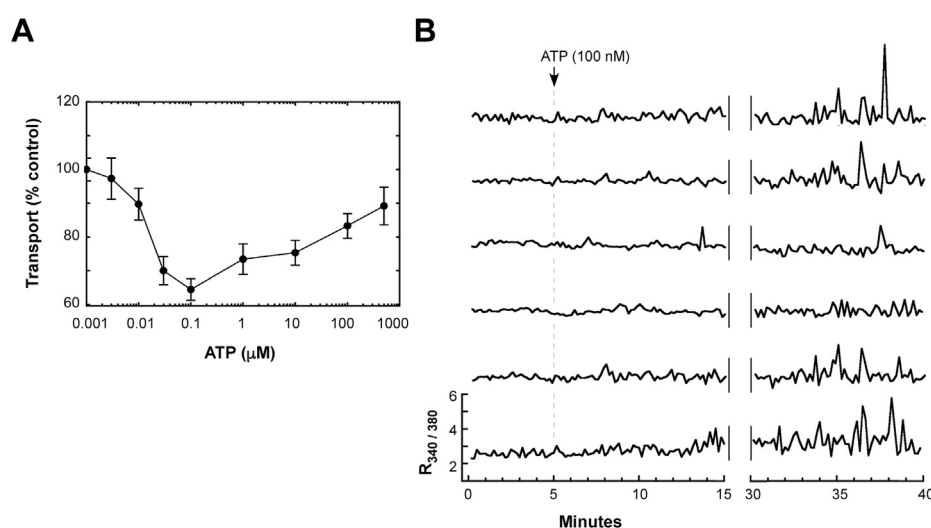
colocalization of lost outer coat. Figure 7F, left, shows that cytoplasmic peflin spot intensity increased by 40% in the same cells in which the destabilized outer coat was documented. In these same cells, however, we detected a statistically significant 15% decrease in nuclear peflin spot intensity (Fig. 7F, right). It is unknown whether peflin release from the nucleus is a passive result of, as opposed to a driver of, increased peflin targeting to ERES. Note that peflin, *per se*, is not required for CADEE induction but that during CADEE, peflin contributes substantially to the low transport values observed (Fig. 6A). We currently do not know the significance of increased peflin at ERES during CADEE, but note that peflin-bound ALG-2 seems to be a parallel inhibitory state (Fig. 6C). In conclusion, the CADEE phenomenon is accompanied by destabilization of the COPII outer coat at ERES and increased peflin localization at these sites, both predicted to decrease the rate of ER export.

#### ATP elicits functionally distinct effects on ER export in NRK and PC12 cells

Extracellular ATP was used as a  $\text{Ca}^{2+}$  agonist and found to elicit CADEE similarly to histamine. A dose–response curve for ATP in ER-to-Golgi transport is shown in Figure 8A. Interestingly, CADEE occurred maximally in doses close to 100 nM, while doses of 100  $\mu\text{M}$ —a typical concentration in the literature for induction of  $\text{Ca}^{2+}$  signaling—resulted in little or no CADEE. This implied that the CADEE secretion response may depend upon on a defined  $\text{Ca}^{2+}$  signature or pattern during its induction. To investigate what the  $\text{Ca}^{2+}$  pattern associated with CADEE was, we recorded cytosolic  $\text{Ca}^{2+}$  signaling over a 40-min period using FURA-2 cytosolic  $\text{Ca}^{2+}$  dye; cells were maintained at 37 °C in their regular medium during imaging. As shown in Figure 8B, which displays representative individual cell traces, 100 nM ATP elicited a

small or sometimes no immediate  $\text{Ca}^{2+}$  response. During the subsequent 10 min following ATP addition,  $\text{Ca}^{2+}$  oscillations became more frequent and larger. Following a 15-min break from imaging, cells with oscillations following ATP addition continued to show oscillations, now with even greater frequency and intensity. This experiment demonstrates that once again CADEE was associated with sustained  $\text{Ca}^{2+}$  oscillations over many minutes.

To examine the generality of these phenomena, we titrated neuroendocrine PC12 cells with the  $\text{Ca}^{2+}$  agonist ATP using the same cargo and ER-to-Golgi transport assay as in NRK cells. As shown in Figure 9A, PC12 cells responded to ATP with the opposite response to that of NRK cells, constituting a  $\text{Ca}^{2+}$ -activated enhancement of ER export (CAEEE). The response to ATP involved an approximately 30% increase in ER export (as opposed to a 40% decrease in NRK cells) and was approximately 1 order of magnitude less sensitive to ATP, with a maximum near 1  $\mu\text{M}$  ATP. Higher concentrations of ATP gave smaller effects on secretion as observed in NRK cells. To investigate the role of PEF proteins in the CAEEE response, we used ALG-2 siRNA. As shown in Figure 9B, PC12 cells depleted of PEF proteins did not change secretion in response to ATP, indicating that CAEEE, like CADEE, requires the correct complement of ALG-2 and peflin. Figure 9E demonstrates that the functional effects of depletion were obtained with a somewhat modest 51% depletion of ALG-2, and that as in other cells, there was codepletion of peflin as well. One possibility to explain the differing responses to ATP between NRK and PC12 cells would be that in different cell types, ALG-2 responds to  $\text{Ca}^{2+}$  in different ways because of differences in secretory machinery. In support of this idea, as shown in Figure 1G, PC12 cells contain around half as much ALG-2 and are relatively depleted of peflin compared with NRK cells.



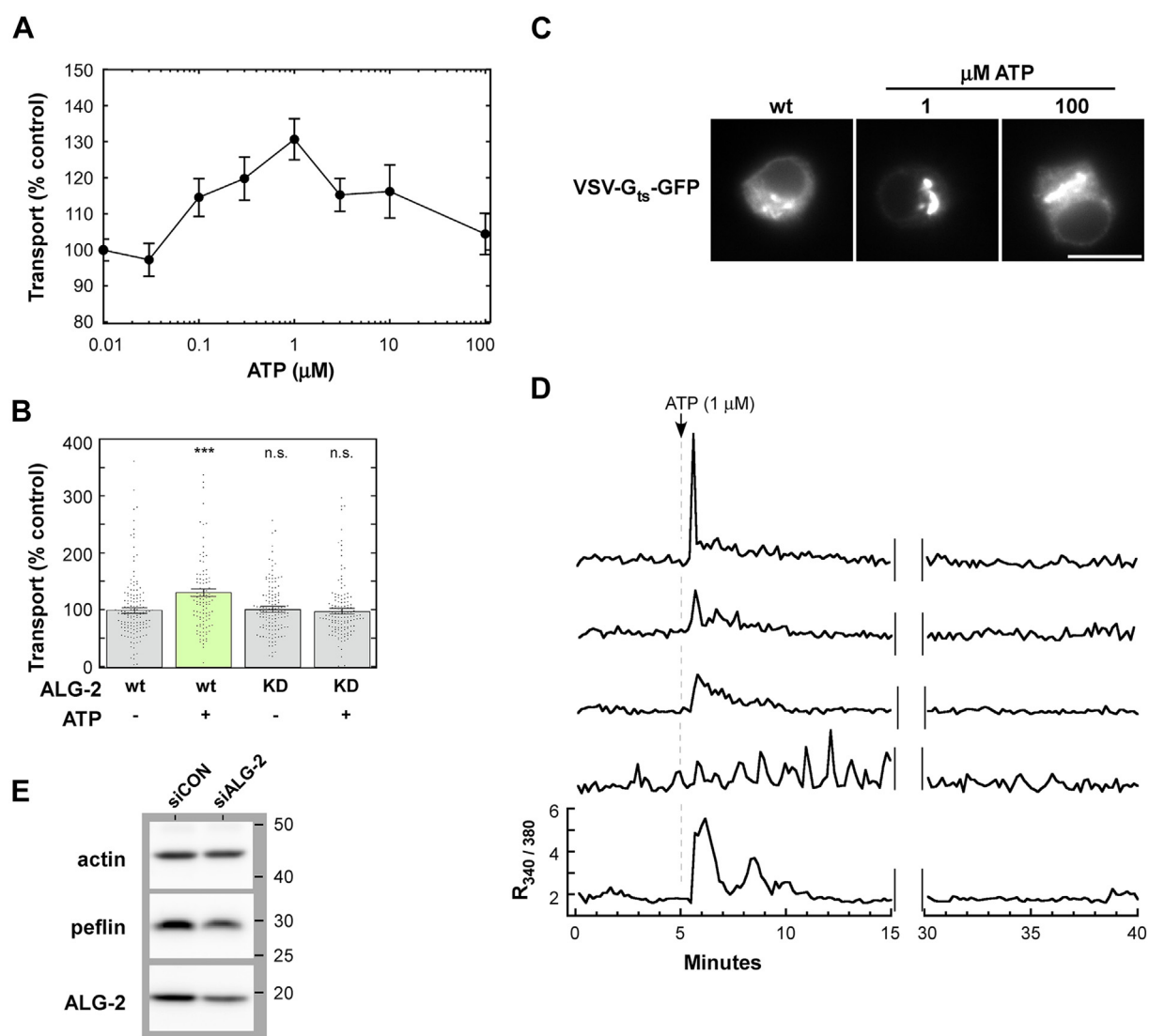
**Figure 8. ATP elicits  $\text{Ca}^{2+}$ -activated depression of ER export and continuing  $\text{Ca}^{2+}$  oscillations in NRK cells.** A, NRK cells were transfected with VSV- $G_{\text{TS045}}$  and treated with a range of ATP concentrations for 2.5 h at the nonpermissive temperature prior to shift to the permissive temperature for 10 min, after which transport was quantitated as in Figure 1A. Mean  $\pm$  SEM is shown for each point;  $N \sim 100$  cells per condition. B, representative single cell FURA-2 traces. NRK cells were loaded with FURA-2 AM prior to incubation at 37 °C on the microscope stage in their regular medium supplemented with 20 mM Hepes. A first round of imaging every 10 s for 15 min was conducted, with introduction of ATP by pipet at  $t = 5$  min. At  $t = 30$  min, a second round of imaging every 10 s for 10 min was conducted on the same field of cells.

## ALG-2 and peflin regulate secretion

However, another possibility would be that ATP produces distinct  $\text{Ca}^{2+}$  signaling intensities or patterns in NRK and PC12 cells, and ALG-2 responds to distinct signaling properties in different ways. To help distinguish these possibilities, we carried out studies of cytoplasmic  $\text{Ca}^{2+}$  signaling in PC12 cells as we did in Figure 8B for NRK cells. As shown in Figure 9D, 1  $\mu\text{M}$  ATP produced an immediate surge of cytoplasmic  $\text{Ca}^{2+}$  followed by a significant diminution within a few minutes. Thereafter, clear  $\text{Ca}^{2+}$  oscillations were rare and widely interspersed. These data suggest that distinct intensities and/or durations of  $\text{Ca}^{2+}$  signaling may underlie the different ALG-2-dependent secretory responses to ATP in NRK (Fig. 8) and PC12 (Fig. 9) cells. Sustained  $\text{Ca}^{2+}$  signals are associated with CADEE while strong responses followed by diminution are associated with CAEEE.

### In NRK cells, distinct $\text{Ca}^{2+}$ mobilization patterns determine whether ALG-2 enhances or depresses ER export

Since the opposing secretory responses of NRK and PC12 cells to ATP were associated with distinct  $\text{Ca}^{2+}$  signaling patterns, it seemed likely that spatiotemporal signaling properties, rather than a difference in secretory machinery, accounted for the distinct functional outcomes between the cell types. If this was the case, then NRK cells, given an appropriate  $\text{Ca}^{2+}$  stimulus, could respond with enhanced secretion like PC12 cells. Since an abrupt, discontinuous  $\text{Ca}^{2+}$  pattern was associated with CAEEE in PC12 cells (Fig. 9), we tested the sarco-endoplasmic  $\text{Ca}^{2+}$  ATPase (SERCA) inhibitor 2,5-Di-(t-butyl)-1,4-hydroquinone (BHQ) in NRK cells, which invokes a surge of cytoplasmic  $\text{Ca}^{2+}$  for a few minutes until extrusion and other mechanisms restore the cytoplasm to



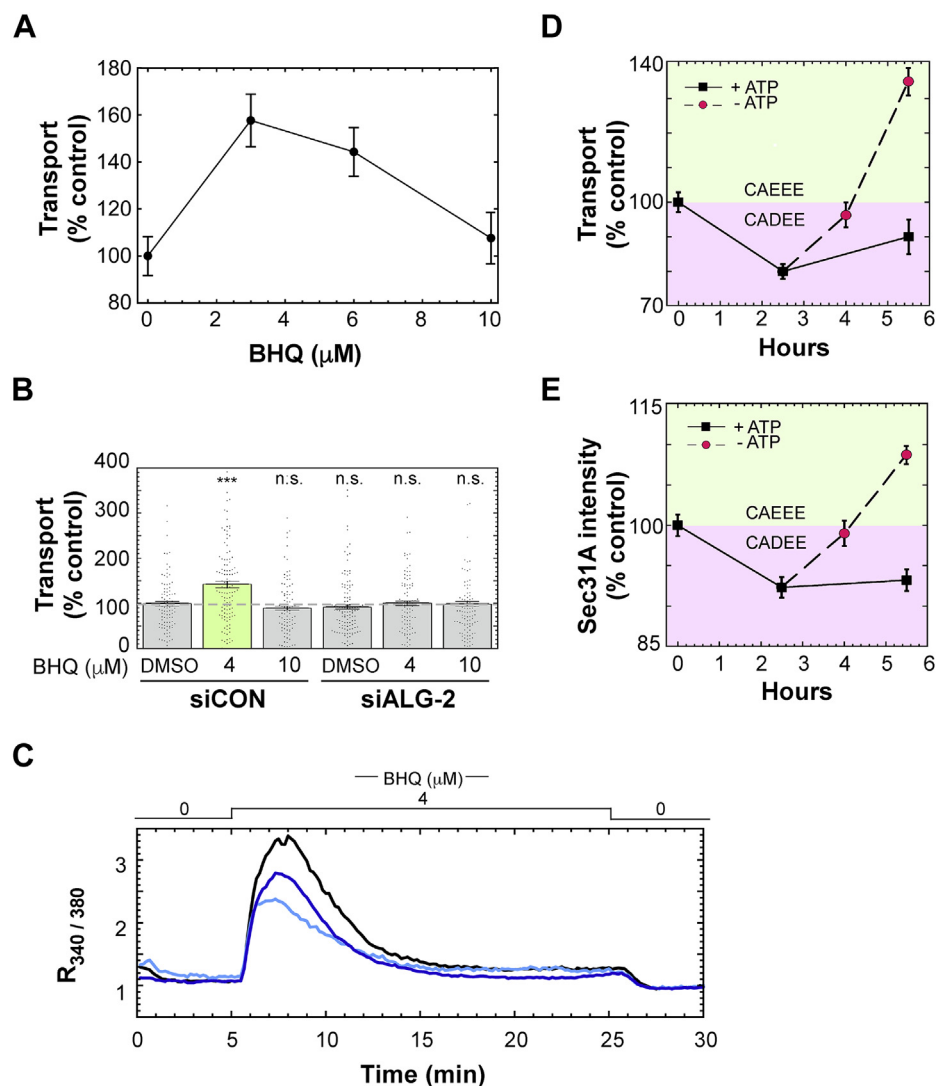
**Figure 9.** ATP elicits  $\text{Ca}^{2+}$ -activated enhancement of ER export and discontinuous  $\text{Ca}^{2+}$  signaling in PC12 cells. **A**, PC12 cells were transfected with VSV-G<sub>ts045</sub> and treated with a range of ATP concentrations for 2.5 h at the nonpermissive temperature prior to shift to the permissive temperature for 10 min, after which transport was quantitated as in Figure 1A. Mean  $\pm$  SEM is shown for each point;  $N \sim 100$  cells per condition. One-way ANOVA as in Figure 1A. **B**, PC12 cells were transfected with VSV-G and control or ALG-2 siRNA. Cells were exposed to 1  $\mu\text{M}$  ATP for 2.5 h prior to the shift to a permissive trafficking temperature and quantitation of VSV-G transport. **C**, example widefield images of individual cells from **A** for select conditions. **D**, in PC12 cells, exposure to 1  $\mu\text{M}$  ATP produces immediate  $\text{Ca}^{2+}$  signaling that fades in strength and frequency over time. Shown are individual cell traces representative of this effect. The conditions used were identical to in Figure 8B. **E**, Western blot on leftover cell extracts from part **B**, demonstrating a 51% depletion of ALG-2 with siRNA, as well as a co-depletion of peflin. Image scale bar; 20  $\mu\text{m}$ .

near-basal levels (see below). We previously demonstrated that a combination of ATP and BHQ increased ER-to-Golgi transport of GFP-F<sub>M</sub>4-GH in HeLa cells, though a mechanism was not pursued further (34). As shown in Figure 10A, at low micromolar concentrations for 2.5 h, BHQ stimulated ER-to-Golgi transport by 50% or more, while by 10 μM, the compound caused no significant effect on transport (and in many cells, caused visible cytopathic effects). As shown in Figure 10B, the Ca<sup>2+</sup>-activated enhancement of ER export elicited by 4 μM BHQ was entirely PEF protein-dependent, since ALG-2 siRNA rendered cells unresponsive to BHQ. Representative individual cell traces of Ca<sup>2+</sup> dynamics elicited by BHQ are presented in Figure 10C. BHQ produced a surge of Ca<sup>2+</sup> that then diminished and stabilized. Compared with the 100 nM dose of ATP in NRK cells (Fig. 8B) and the 1 μM dose

of ATP in PC12 cells (Fig. 9D), the 4 μM dose of BHQ more closely resembled the discontinuous pattern for ATP in PC12 cells that resulted in CAEEE. Together, these experiments indicate that ALG-2 responses to Ca<sup>2+</sup> signaling can produce CADEE or CAEEE—even within the same cell type—based upon the signaling pattern and/or duration, with continuous, tonic elevations associated with the former and large surges followed by significant diminution associated with the latter.

**ALG-2-dependent depression of transport is succeeded by the enhancement of transport upon agonist removal**

Since both the ATP depressive effect and the BHQ enhancing effects in NRK cells depended upon Ca<sup>2+</sup> and ALG-2, we doubted that they were mechanistically completely



**Figure 10. NRK cells possess both Ca<sup>2+</sup>-activated depression and enhancement of ER export, dependent upon the stimulation pattern and duration.** A, NRK cells transfected with VSV-G were exposed to a range of BHQ doses for 2.5 h after which transport indices were calculated for ~100 cells as for Figure 1A. The mean transport index for each BHQ condition is plotted as a single black dot. B, NRK cells transfected with VSV-G and control or ALG-2-specific siRNAs were treated with specific BHQ doses or a DMSO control for 2.5 h prior to determination of transport indices. One-way ANOVA as in Figure 1A. C, example FURA-2 traces of NRK cells exposed to 4 μM BHQ. Methods similar to Figure 8B except that the cells were recorded during perfusion with media successively lacking, containing, and then lacking BHQ. D, NRK cells were treated with 100 nM ATP and either maintained (black squares) for up to 5.5 h, or the ATP was removed by washing at 2.5 h and the cells were incubated for up to 3 h further (red circles). Transport relative to control was plotted for several timepoints. E, using cells from D, mean sec31 spot intensity was calculated from deconvolved images as in Figure 2D.

## ALG-2 and peflin regulate secretion

distinct. Instead, it seemed plausible that they were both part of a more uniform ALG-2 response that proceeded in consecutive phases, but that the relative intensity and timing of the phases could differ between different  $\text{Ca}^{2+}$  protocols or cell types. If this was the case, it should be possible to produce both CADEE and CAEEE using just ATP in NRK cells. Figure 10D black squares, shows ATP-dependent CADEE over 5.5 h in NRK cells. As with the response to histamine (Fig. 6), the CADEE effect of ATP is strong at 2.5 h. After this initial induction, the depression may diminish somewhat but persists for an additional 3 h. On the other hand, as shown in the red circles, if ATP is removed after the initial 2.5 h, the secretion rate rebounds, achieving its initial rate 1.5 h following ATP removal. Strikingly, by 3 h following ATP removal ( $t = 5.5$  h in Fig. 10D), secretion has accelerated well beyond its initial, basal rate, an increase reminiscent of the enhancement of secretion caused by 2.5 h of ATP treatment in PC12 cells (Fig. 9A). While our results do not explain the molecular changes that result in the reversal of CADEE to cause CAEEE, it suggests that CADEE is not an off-pathway state but rather a state associated with ongoing signaling, while CAEEE may be a response to the cessation of signaling. In other words, both CADEE and CAEEE constitute a regulatory sequence controlled by the intensity and length of signaling episodes. This experiment using only ATP in NRK cells also rules out the possibility that potential signaling cross talk between distinct signaling pathways determines whether CADEE or CAEEE manifests.

Given that changes in outer coat targeting to ERES would be a sufficient mechanistic basis for ALG-2- and peflin-dependent transport activities, we wondered whether the cycle of decreased and then increased transport induced by ATP incubation and removal (Fig. 10D) would be reflected in parallel decreases followed by increases in outer coat targeting. Indeed, when sec31 spot intensity was quantified from the transport experiment shown in Figure 10D, we found that sec31A targeting closely correlated with CADEE, the release from CADEE by ATP removal, and subsequent induction of CAEEE by 5.5 h (Fig. 10E). These results support the hypothesis that ALG-2-dependent modulation of outer coat targeting drives all of the ALG-2-dependent transport phenotypes characterized herein.

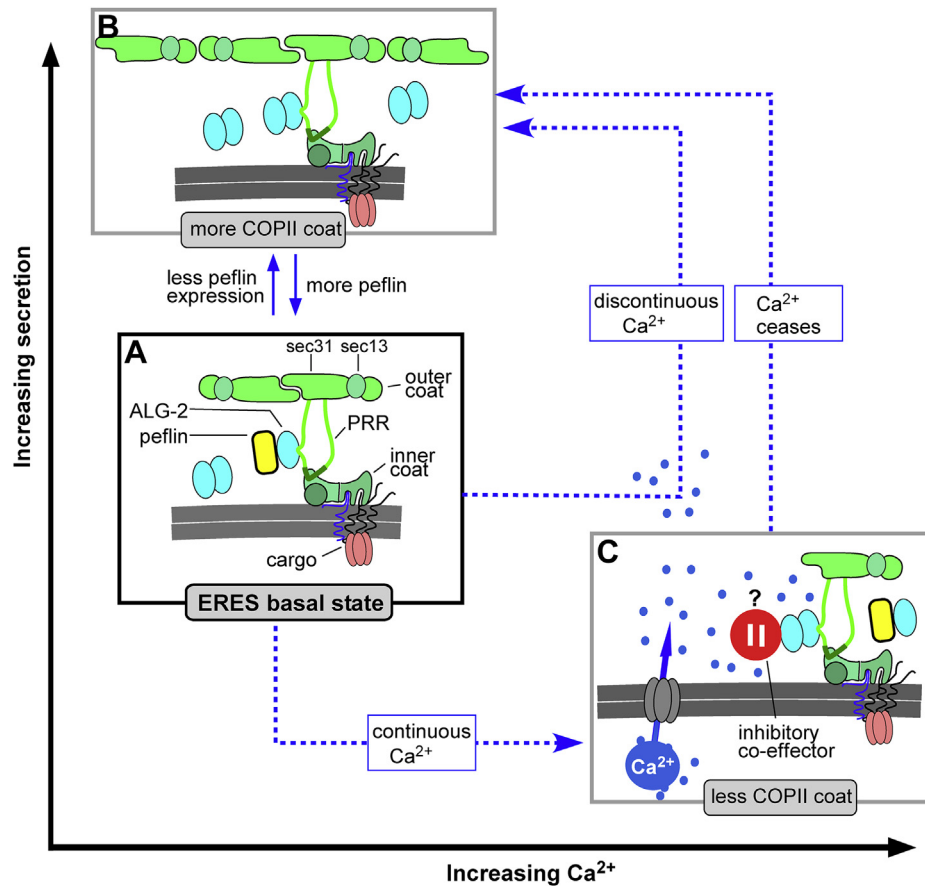
## Discussion

### ALG-2, peflin, and effectors comprise a hetero-bifunctional regulator of ER export

From these studies, a model emerges (Fig. 11) in which ALG-2, peflin, and their effectors exist in several activity states correlating with distinct compositions of ER exit sites. These states result in either upregulation (Fig. 11B) or downregulation (Fig. 11C) of the basal ER export rate (Fig. 11A) with potentially important consequences for cell physiology and pathology, including ER stress. The activity states are purely regulatory since neither peflin nor ALG-2 is essential for secretion. By experimentally adjusting the ALG-2:peflin ratio at steady-state  $\text{Ca}^{2+}$  we determined that a peflin-ALG-2

hetero-complex bound to ERES and inhibited ER-to-Golgi transport, and that a peflin-lacking ALG-2 species bound there to stimulate transport. Mechanistically, these states correlate with decreased and increased, respectively, targeting of the COPII outer coat to ERES, presumably mediated by the well-characterized interaction between ALG-2 and its binding site in the proline-rich region or loop of sec31a that connects the inner and outer coats (21). Though our studies did not define the subunit makeup or stoichiometry of ALG-2 complexes, it is likely that the inhibitory ALG-2-peflin complex targeted to ERES by ALG-2 is at least in part the 1:1 heterodimer characterized earlier to occupy the majority of ALG-2 in the cell and is dissociated by high  $\text{Ca}^{2+}$  (14, 15). The peflin-lacking ALG-2 complex is most likely comprised at least in part of the  $\text{Ca}^{2+}$ -stimulated ALG-2 homodimer whose crystal structure was determined in complex with sec31A peptide (21). Our schematic depicts them as a heterodimer and homodimer as the simplest explanation comprised of known species. The ALG-2 homodimer has been described generally as a  $\text{Ca}^{2+}$ -dependent adaptor because of its ability to engage two coeffectors at once and link them (35). In our schematic, one of the ALG-2 coeffectors is always sec31A, since that interaction is required for ALG-2 localization to ERES (10, 11). For the stimulatory activity of ALG-2 (Fig. 11, part B), the simplest model would be that the other coeffector would be a second molecule of sec31A, as this could result in cooperative coat assembly, more outer coat, and higher transport. Indeed, ALG-2-dependent inner-outer coat interactions have been demonstrated in solution without inclusion of other proteins (17). However, there may be other ALG-2 effectors involved that our work does not address, several of which have been identified at ERES, including annexin A11 (18), MISSL, MAP1B (36), and KLHL12 (20). We have not ruled out, for example, the possibility that ALG-2 and peflin interactions with KLHL12 contribute to the sec31A increases and decreases we observe at ERES during CADEE and CAEEE, through a mechanism involving sec31A ubiquitination (20, 37). Another posttranslational modification that could play a role as directed by ALG-2 and peflin is O-GlcNAcylation of sec31A (38, 39).

$\text{Ca}^{2+}$  signaling can result in either a stimulatory or inhibitory activity of ALG-2, as can overexpression of ALG-2, that is independent of peflin. This stimulatory state is assumed in our model to be the same state just discussed and ascribed to the homodimer (Fig. 11, part B). The  $\text{Ca}^{2+}$ -induced inhibitory state could also be mediated by ALG-2 alone or could involve a distinct, inhibitory coeffector that is recruited by ALG-2 during sustained  $\text{Ca}^{2+}$  elevation (Fig. 11, part C, red pause button). ALG-2 homodimers alone could be inhibitory because if the positive function of ALG-2 homodimers is to cross-link sec31A molecules, then oversaturation by homodimers should prevent that cross-linking. Though the cross-linking/oversaturation model to explain both influences is the simpler model, the distinct, inhibitory cofactor model actually fits our data better since it explains why depletion of ALG-2, or ALG-2 and peflin does not *per se* inhibit secretion. We do not know what the putative inhibitory coeffector might be, but as



**Figure 11. Model of PEF protein and  $\text{Ca}^{2+}$  regulation of ER export.** A, under steady-state conditions, ALG-2 binds ERES in two distinct functional states that compete with each other. An ALG-2 homodimer binds sec31A to stimulate transport, while a peflin-ALG-2 complex binds sec31A via ALG-2 and inhibits transport. B, increases in the ALG-2:peflin expression ratio or discontinuous agonist-driven  $\text{Ca}^{2+}$  signaling comprised of high  $\text{Ca}^{2+}$  followed by low  $\text{Ca}^{2+}$ , leads to more ALG-2 homodimers at ERES, greater outer coat recruitment, and greater export of COPII client cargo. C, continuous  $\text{Ca}^{2+}$  signals such as persistent agonist-driven oscillations leads to an ALG-2-dependent reduction of COPII targeting and decreased export of COPII client cargoes. Though peflin binding to ERES also increases during this state, it is not required for the response, leading us to posit either a distinct, unknown inhibitory  $\text{Ca}^{2+}$ -activated ALG-2 effector (red pause button) or alternatively an inhibitory effect of ALG-2 produced by saturation of sec31A (see Discussion). State C persists for hours if signaling persists, however, abrupt cessation of  $\text{Ca}^{2+}$  signaling leads directly to state B.

just mentioned, ALG-2 has a number of  $\text{Ca}^{2+}$ -dependent client proteins. By whichever mechanism, the inhibitory state is experimentally distinct from that containing peflin since it does not require peflin (Figs. 3B and 6A) and is buffered against by the presence of peflin (Figs. 3B and 6C).

Questions remain about how transitions occur between the identified activity states. For example, why does cessation of long-term  $\text{Ca}^{2+}$  stimulation lead to the stimulatory state (Fig. 11, “ $\text{Ca}^{2+}$  ceases” blue arrow)? Perhaps during long-term  $\text{Ca}^{2+}$  signaling, ALG-2 homodimers accumulate at ERES, such that once the inhibitory coeffector is released, the stimulatory state mediated by homodimers automatically ensues. Another hole in our understanding is whether all  $\text{Ca}^{2+}$ -induced secretion changes include at least a short, transient inhibitory state. An alternative possibility is that certain  $\text{Ca}^{2+}$  intensities and durations directly induce positive regulation of secretion (Fig. 11 “discontinuous  $\text{Ca}^{2+}$ ” blue arrow). Unfortunately, this question is currently difficult to address given the lags before measurable secretion changes occur.

Another aspect to our model is that it only addresses the export of actively-sorted COPII client cargo. We have no data about whether vesicle budding rates, *per se*, increase and

decrease in concert with the export rates of the measured cargos. It cannot be ruled out, for example, that increases in VSV-G transport are actually caused by slower vesicle budding but more stringent sorting of client cargos. The fact that bulk flow cargo export slows as client cargo accelerates (Fig. 4B) implies that client cargo sorting is so stringent as to exclude nonclient cargo. What effect this has on vesicle budding remains unexplored.

An unexpected discovery was that peflin is concentrated in the nucleus (Fig. 2A). ALG-2 has also been reported to localize to the nucleus and has been implicated in  $\text{Ca}^{2+}$ -regulated splicing reactions there (40). While we cannot rule out the possibility that nuclear function of either ALG-2 or peflin could contribute to their transport effects, their presence and intensity ratios at ERES during expression studies (Fig. 2) correlate extremely well with their functional impacts on ER-to-Golgi transport (Fig. 1A). We still do not understand, however, how  $\text{Ca}^{2+}$  changes result in the ERES targeting and functional changes we observed. For example, ALG-2 binding/unbinding to ERES occurs untemporally with every single  $\text{Ca}^{2+}$  oscillation ((12), and our own unpublished observations), yet ALG-2-dependent changes in ERES structure/function



## ALG-2 and peflin regulate secretion

caused by  $\text{Ca}^{2+}$  changes take  $\geq 30$  min. The unitemporal binding/unbinding may contribute to a longer-term change, perhaps involving the entire cellular balance of ALG-2 homodimers *versus* heterodimers, that actually drives the functional changes. Alternatively, the ERES functional changes may involve something more akin to ERES biogenesis and disassembly, rather than merely changes in the content of outer coated located at ERES. One possibility we have largely ruled out involves the transcriptional response to ER stress. Knockdowns of peflin in unstressed cells under basal conditions did not detectably affect the UPR as indicated by intensities of bands on Westerns with the following antibodies: anti-phospho-IRE1, anti-phospho-EIF2 alpha, anti-ATF4 and anti-CHOP (data not shown). This excludes the mechanism wherein peflin depletion could cause ER stress, which would increase transcription of COPII machinery to build ERES and accelerate secretion. Based upon all available evidence, we conclude that PEF protein effects on ER-to-Golgi transport are mediated directly through, or triggered by, their interactions with sec31A at ERES.

There are scarce precedents in the literature for agonist-dependent  $\text{Ca}^{2+}$  signaling affecting constitutive secretion. In one instance, it was discovered that long-term histamine signaling accelerated intra-Golgi VSV-G transport (41), an effect that involved a distinct  $\text{Ca}^{2+}$  effector and trafficking machinery target, and yet is reminiscent of our finding that ATP signaling in PC12 cells accelerated ER-to-Golgi transport (Fig. 9). There are many reasons for cells to up- or down-regulate constitutive trafficking, including to regulate intercellular communication in the case of secretory cells and neurons, to regulate resource consumption, cell growth, ER stress, and to limit viral replication. It is of note that there appear to be two inhibitory states, one peflin-dependent and another peflin-independent. The peflin-containing state is present at steady state and could allow cells to permanently change secretion rates by adjusting the relative peflin expression level. On the other hand, the  $\text{Ca}^{2+}$ -activated inhibitory state could “choke” secretion quickly during transient excitotoxic circumstances or viral infection. Though the consequences of secretion reduction could be protective to otherwise healthy cells, we speculated that it may be maladaptive to highly stressed cells. Along these lines we depleted peflin in a cellular model of aging wherein primary porcine aorta endothelial cells become senescent, display mitochondrial  $\text{Ca}^{2+}$  excitotoxicity, elevated ROS production, chronic ER stress signaling in the absence of chemical inducers, and eventual apoptosis (31). We found that peflin depletion drastically reduced proapoptotic UPR signaling (Fig. 5F), consistent with its suppressive role in secretion being relevant to damage-inducing ER stress.

## Experimental procedures

### Antibody production and purification

Rat peflin and mouse ALG-2 were ligated into pGEX expression plasmids and expressed in *E. coli* as GST fusion proteins. Cultures were grown at 37 °C to an  $A_{600}$  of 0.4 to 0.6,

prior to an induction with 1 mM isopropyl-1-thio- $\beta$ -D-galactopyranoside (IPTG) at 37 °C for GST-ALG-2, and 15 °C for GST-peflin, for 3 h. Harvested cells were subjected to a single round of French Press and centrifuged at 20,000g for 20 min. Pellets were collected, dissolved in sample buffer, and loaded onto SDS-PAGE gels. Gels were stained with 0.1% Coomassie in  $\text{H}_2\text{O}$ , and the resolved bands were excised from the gel and subjected to a 3 h electroelution in 25 mM Tris, 1 mM glycine and 0.1% SDS, on ice. The eluted protein solution was concentrated and injected subcutaneously, using Freund's adjuvant, into a rabbit, for peflin, or a chicken for ALG-2. Three subsequent antigen boost injections were done over an 80-day period. At this stage, the peflin antibody was fully useful as a crude serum. For the ALG-2 antibody, sera were supplemented with an equal volume of 10 mM Tris, pH 7.5, filtered with a syringe filter and passed through a 1 ml CNBr-Sepharose column conjugated with GST as nonspecific control. The flow-through was then loaded onto another CNBr-Sepharose column conjugated with mouse GST-ALG-2. Columns were washed with  $3 \times 5$  ml of 10 mM Tris, pH 7.5, then washed with the same buffer containing 0.5 M NaCl, once again with 10 mM Tris, pH 7.5, and finally eluted with 0.1 M glycine, pH 2.5. Fractions were neutralized with 2 M Tris, pH 8.0, and quantitated at A280. Peak fractions were pooled and dialyzed into PBS.

### Other antibodies and expression constructs

Monoclonal anti-VSV-G was purchased from Sigma (product V5507, clone P5D4), while monoclonal anti-VSV-G clone I14 antibodies (42) were produced in-house from the hybridoma cell line. Mouse monoclonal anti-CHOP antibody was purchased from ThermoFisher Scientific (product MA1-250). Rabbit polyclonal anti-collagen I antibody was purchased from Abcam (product ab34710). Mouse monoclonal anti-mannosidase II antibody was purchased from Covance Research Products (product MMS-110R-200). Green secondary antibodies conjugated to Alexa Fluor 488 were from Invitrogen (product A11001); Cy3-, or cy5-conjugated secondary antibodies were purchased from Jackson ImmunoResearch Laboratories.

Cargo constructs: for routine ER-to-Golgi transport studies, we used the synchronizable cargo VSV- $G_{ts045}$ -GFP in pCMV, or more commonly the untagged version of VSV- $G_{ts045}$  in pCMV in conjunction with the P5D4 monoclonal antibody for immunofluorescence detection (the untagged construct has a significantly higher transfection efficiency). Human GFP-Collagen I was from David Stephens *via* Addgene (construct: pEGFP-N2-COL1A1). The transport cargos retained in the ER until triggered to export with a ligand are based upon the RPD Regulated Secretion/Aggregation Kit from ARIAD Pharmaceuticals. The luminal cargo we here call “GFP- $F_{M4}$ -GH” is identical to the construct “pC4S1-eGFP- $F_{M4}$ -FCS-hGH” we described before (24). GFP- $F_{M4}$ -VSV- $G_{tm}$  was constructed from GFP- $F_{M4}$ -GH by removing the furin cleavage site and human growth hormone by cleavage with SpeI/BamHI and replacing it with a fragment containing the VSV-G transmembrane domain: 5'- actagtTCATCGTCGAAGAGCTCTA

TTGCCCTCTTTTTCTTTATCATAGGGTTAATCATTGG  
ACTATTCTTGGTTCTCCGAGTTGGTATTTATCTTTGC  
ATTAAATTAAGCACACCAA GAAAAGACAGATTTAT  
ACAGACATAGAGATGAACCGACTTGGAAAGTAAGC  
GCCCG Cggatcc-3'. To make GFP-F<sub>M</sub>4-GPI was the same  
procedure except that the SpeI/BamHI- cleaved construct was  
ligated with a fragment containing the CD55 GPI anchor  
sequence: 5'-actagtACAACCCCAAATAAAGGAAGTGGAA  
CCACTTCAGGTACTACCCGCTTCTATC TGGGCACAC  
GTGTTTCACGTTGACAGTTTGCTTGGGACGCTA GT  
AACCATGGGCTT GCTGACTTAGggatcc-3'. This construct  
is targeted to the plasma membrane where it is sensitive to  
extracellular PI-PLC treatment (DEG and AAP, unpublished  
observations). For VSV-G<sub>ts045</sub> employed in Figure 7 as an  
ERES marker, we utilized the untagged VSV-G<sub>ts045</sub>, then  
immuno-labeled it using monoclonal antibody I14, which only  
detects mature trimers.

Rat peflin was amplified from a cDNA clone by PCR primers  
encoding EcoRI/XhoI. This product was ligated into  
mammalian expression vector pCDNA 3.1(+). Mouse ALG-2  
was amplified from a cDNA clone (MGC: 49479) and ligated  
into mammalian expression vector pME18S using PCR  
primers encoding XhoI and XbaI. GFP-sec13 was as described  
(43). Histamine receptor construct pH1R-P2A-mCherry-N1  
was purchased from Addgene (product: 84330). For a plasma  
membrane marker for use in total cell fluorescence calcula-  
tions, pCAG-mGFP was purchased from Addgene (product:  
14757).

### siRNA knockdowns and transfections

For plasmid transfections, NRK or PC12 cells were trans-  
fected using Polyjet (SignaGen Laboratories), following the  
manufacturer's instructions, about 24 h prior to transport as-  
says. For transport experiments involving both plasmid and  
siRNA transfections, NRK or PC12 cells were transfected with  
siRNAs using RNAiMax (Invitrogen) with OpiMEM medium  
as suggested by the manufacturer, approximately 48 h prior to  
transport. Then, approximately 24 h prior to transport, they  
were transfected with plasmids using Polyjet as just described.  
Cells were equilibrated at 41 °C for 6 to 12 h prior to transport.  
Control siRNA had the following sense strand sequence:  
5'-AGGUAGUGUAAUCGCCUUGdTdT-3'. Peflin siRNA  
0975 had the following sense strand sequence: 5'-GCCU-  
CAUGAUGAUAAACAUDdTdT-3'. In a previous manuscript,  
we established that three distinct, nonoverlapping peflin  
siRNA sequences—including 0975—produced the phenotype  
of elevated ER-to-Golgi transport ((16), Fig. S1). ALG-2 siRNA  
8567 had the following sense strand sequence: 5'-GGAGCG-  
GAGUGAUUUCAGAdTdT-3'. In a previous manuscript, we  
established that three distinct, nonoverlapping ALG-2 siRNAs  
—including 8567—produced consistent, mild effects on ER-to-  
Golgi transport (8). To demonstrate that multiple distinct se-  
quences also blocked Ca<sup>2+</sup> effects on transport, we tested the  
siRNA 8568, which is completely distinct from siRNA 8567,  
and found that it did (this manuscript, Fig. S2). Collagen  
siRNA had the following sense strand sequence: 5'-

GAACUCAACCUAAAUAAdTdT-3'. All siRNAs were  
custom synthesized lacking chemical modifications by Gene  
Link.

### Cell culture and agonist/drug treatments

NRK and Rat2 cells were grown in DMEM with 4.5 g/l  
glucose, 10% FBS (Gibco, qualified grade), and 1% penicillin-  
streptomycin. For microscopy studies, they were grown  
directly on glass coverslips coated with poly-L-lysine. PC12  
cells were grown in DMEM with 4.5 g/l glucose, 5% donor  
horse serum (Hyclone), and 5% iron-supplemented bovine calf  
serum (Hyclone). PC12 cells were maintained routinely on  
collagen-I-coated plasticware, while for microscopy they were  
plated directly on glass coverslips that had been first coated  
with poly-L-lysine and then coated with collagen I. Porcine  
aorta endothelial cells were isolated and cultured to P5 as  
described before (31). For agonist/drug treatments, NRK or  
PC12 cells were grown to ~100% confluency in 6-well plates.  
Histamine (Sigma H7125) was dispensed into glass vials under  
nitrogen and stored at -20 °C. Solutions of histamine were  
prepared fresh each day, while ATP (500 mM in water) and  
BHQ (100 mM in DMSO) stock solutions were stored frozen  
and freshly diluted each day. Bradykinin was dissolved at  
5 mM in 5% acetic acid, stored in aliquots at -80 °C, and used  
immediately after dilution in cell medium.

### PAEC's and RT-PCR

PAECs in an aged state (passage 5), confirmed by positive  
beta-galactosidase staining and decreased proliferation rate  
(31), were transfected with peflin siRNA using Transfast  
(Promega Corp) according to manufacturer's instructions.  
Total RNA was isolated using the PEQLAB total RNA isola-  
tion kit (Peqlab) and reverse transcription was performed in a  
thermal cycler (Peqlab) using a cDNA synthesis kit (Applied  
Biosystems). mRNA levels were examined by qRT-PCR. A  
QuantiFast SYBR Green RT-PCR kit (Qiagen) was used to  
perform real time PCR on a LightCycler 480 (Roche Di-  
agnostics), and data were analyzed by the REST Software  
(Qiagen). Relative expression of specific genes was normalized  
to porcine GAPDH as a housekeeping gene. Primers for qRT-  
PCR were obtained from Invitrogen.

### Calcium imaging

Prior to imaging, NRK or PC12 cells were loaded by incu-  
bation in growth medium containing 20 mM HEPES, 3 μM  
FURA-2AM, and 1.5 mM probenecid for 30 min at 37 °C, then  
washed and incubated for 10 min in the same medium lacking  
FURA-2AM. Coverslips were then placed in a microscope  
chamber and maintained at 37 °C using a submerged heating  
loop. For ATP experiments, cells were maintained in a non-  
perfusing volume of 1.5 ml growth medium, 20 mM HEPES,  
and probenecid. For BHQ experiments, the medium was  
continuously perfused with prewarmed medium at 2 ml/min.  
Image acquisition was completed by a Nikon TE300 inverted  
microscope equipped with a Nikon Plan Fluor 20×/0.75  
objective, motorized high-speed Sutter Lambda filter wheel for

## ALG-2 and peflin regulate secretion

emissions, CoolLED pe340 excitation system, and PCO Panda sCMOS camera, all automated with Micro-Manager software. After selecting a suitable field of cells, imaging was carried out for at most 30 min of 10 s imaging cycles capturing separate 340 nm- and 380 nm-excited images collected at 510 nm. Analysis was completed in ImageJ using a custom plugin that determined the ratio of the background-subtracted emissions from 340 and 380 excitation for each individual cell over time.

### Immunofluorescence microscopy

Coverslips were fixed with 4% paraformaldehyde containing 0.1 M sodium phosphate (pH 7) for 30 min at room temperature and quenched three times for 10 min with PBS containing 0.1 M glycine. Fixed cells were treated for 15 min at room temperature with permeabilization solution containing 0.4% saponin, 1% BSA, and 2% normal goat serum dissolved in PBS. The cells were then incubated with primary antibodies diluted in permeabilization solution for 1 h at room temperature. Next, coverslips were washed 3× with permeabilization solution and incubated 30 min at room temperature with different combinations of Alexa Fluor 488-, Cy3-, and/or Cy5-conjugated anti-mouse, anti-rabbit, or anti-chicken secondary antibodies. After the secondary antibody incubation, coverslips were again washed 3× using permeabilization solution and mounted on glass slides using Slow Fade Gold antifade reagent (Invitrogen: S36936) and the edges sealed with nail polish. Slides were analyzed using a 40×/1.3 Plan Fluor or 60×/1.4 Plan Apo objective on a Nikon E800 microscope with an LED illumination unit (CoolLED pE 300<sup>white</sup>), sCMOS PCO.edge 4.2 camera, prior excitation, and emission filter wheels and Z-drive, automated using Micro-Manager software. For transport assays (see below), typical images collected for each field of cells were VSV-G<sub>ts045</sub> (green channel) and Golgi marker mannosidase II (cy5 channel). For colocalization assays (see below), typical images collected for each field of cells were sec13-EGFP (GFP channel), ALG-2 (cy3 channel), and peflin (cy5 channel).

### ER-to-Golgi transport assay

NRK, PC12, or Rat2 cells were plated on glass coverslips and transfected as described above. For VSV-G<sub>ts045</sub> and collagen I cargo, cells were shifted to 41 °C for 6 to 15 h prior to transport, to accumulate the cargo in the ER. For the transport assay, the cells were either fixed by dropping coverslips directly into 6-well chambers containing fixative or pre-equilibrated 32 °C medium for 10 min, then fixative. For assays involving collagen I cargo, the 32 °C medium was supplemented with 50 µg/ml ascorbate. Alternatively, for F<sub>M</sub>4-containing cargo constructs, transfected cells were kept always at 37 °C, and the coverslips were fixed either by dropping coverslips directly into fixative or into to 6-well chambers containing 37 °C media with 500 nM AP21998, also known as D/D solubilizer (TakaraBio: 635054), for 10 min prior to transfer to fixative.

Morphological quantitation of ER-to-Golgi transport was accomplished by first collecting images in a consistent manner with regard to cell morphology, protein expression levels, and

exposure. A single widefield image plane was collected for each color channel for each field of cells randomly encountered; image deconvolution was not performed. Prior to image analysis using a custom ImageJ script (available upon request), files for all experimental conditions were automatically and randomly renamed with a 36-character designation and re-sorted by that identifier, eliminating any way for the user to know their identities. Each image is opened in turn and presented to the user, who at this point only views the cargo image plane. For each image the user first defines an extracellular region for use as a background, after which the user defines the minimal rectangular region of interest (ROI) encompassing the first cell to be analyzed. This ROI is then isolated in a separate window and the Golgi maximum is extracted, which represents the mean intensity of the pixels in the 99.990 percentile and above but excluding the highest pixel. The user checks that these brightest pixels are in fact within the Golgi as defined on the mannosidase II image planes. The user then sequentially places three small circular ROIs within vesicular/reticular regions adjacent to the nucleus but clearly distinct from the Golgi. The ER mean is extracted as the mean of the three mean pixel intensities of these ROIs. Transport index is then extracted for the cell as (Golgi maximum-background)/(ER mean-background). Occasionally intensities of other channels are also collected in tandem using an ROI encompassing the cell, such as in [Figure 3B](#), which collected ALG-2 intensities in addition to transport values. The cell is then numbered on the image to avoid recounting, and all extracted parameters written to an appendable output file along with the cell number, and image title so that the data is fully traceable. The user then defines another cell from the image or opens another image. Using this method, the user quantitates 60 to 100 cells per hour.

Once transport indices have been obtained for all conditions in an experiment, each value is subtracted by the mean transport index value for cells that were fixed directly from 41 °C without a transport incubation at 32 °C (typically a value between 1.0 and 1.5) to generate the net transport index. Net transport indices are then normalized to the mean control value for the particular experiment. Each result reported here was obtained in at least three separate experiments on different days.

### Labeling intensity and colocalization assays

Cells were transfected with ERES markers GFP-sec13 or VSV-G<sub>ts045</sub>. Following immunolabeling as described above, cells such as those shown in [Figures 2](#) and [7](#) (or quantitated in [Fig. 10E](#)) were captured as z-stacks in 11, 200-nm increments for each channel. These image stacks were deconvolved as a single batch using Huygens Essential Widefield software (Scientific Volume Imaging) according to the manufacturer's instructions. Final images for display and quantitation represent maximum intensity projections of deconvolved stacks. As before, these deconvolved stacks were each assigned a random 36-character designation and re-sorted by the random name. The intensity of labeled proteins was assessed by a custom

ImageJ script (available upon request) performed on individual cells for which the user manually defines a minimal enclosing ROI. Background labeling was first removed by defining a dark extracellular area of each image channel as background and subtracting that value from every pixel. The specific pixels assessed for intensity were predetermined using a binary object mask, which was generated by auto-thresholding the desired area of the cell using the Renyi Entropy or Intermodos algorithm, depending upon which most accurately captured the spots of interest (but kept constant for a given marker/protein). Spots on the mask were assessed as ROIs that were used to measure either mean intensity or integrated density (product of area and mean intensity) in relevant channels of the unmodified images. Integrated density measurements are referred to as “total intensity” or “total spot intensity” in the figure legends where relevant, whereas mean intensity measurements are labeled as such. The choice to present total *versus* mean intensity was driven by which parameter produced lower variance and thus lower *p* values when used in T-tests (in no cases did they produce opposing results). In a few cases (Fig. 7, C and D), the binary mask used was actually the Boolean intersection (see below) of ALG-2 and another ERES marker (sec31A or peflin); this was because the ALG-2 antibody produced suspected background spots that did not colocalize with ERES markers and were not removed by ALG-2-specific siRNAs. In our nomenclature, “ERES intensity” and “spot intensity” are distinguished by whether the mask for interrogation is generated from a distinct ERES marker from that being measured or from the measured marker itself, respectively. Extracted parameters were written to an appendable output file along with the cell number and image title so that the data was traceable. Following re-sorting by experimental conditions, integrated densities and other parameters for each cell were then normalized to the mean control value for the particular experiment. Each result reported here represents combined data from at least three separate experiments that displayed similar trends.

Alternatively, some binary masks were used to assess particle areas or areas of overlap—also referred to as “colocalization.” Areas of overlap between two channels were calculated from two auto-thresholded images using the Boolean “AND” operator in ImageJ’s image calculator. This operation generated a mask that contained only spots present in both channels, permitting a calculation of the total overlap area.

### Total cell fluorescence assay

In Figure 5, B and C, total cell fluorescence of collagen was determined by first transfecting Rat2 cells with the plasma membrane marker pCAG-mGFP (GFP with an N-terminal palmitoylation signal). Endogenous collagen I was labeled in the cy3 channel. Using pCAG-mGFP, a whole cell ROI was selected *via* the wand threshold tool in ImageJ. That ROI was then moved into the collagen channel wherein total mean gray values and ROI area were extracted. Separately, a mean background value was extracted by randomly selecting an area

without a cell. Total cell fluorescence was calculated as area of selected cell × (mean intensity of cell – mean intensity of background).

### Data availability

All data for this study are contained within the manuscript.

*Supporting information*—This article contains supporting information.

*Acknowledgments*—Technical assistance was provided by UM students Joshua Cobb, Kyndra Haller, and Kinsey Webb.

*Author contributions*—J. S., D. K. S., A. A. P., R. M., and J. C. H. conceptualization; J. S., D. K. S., T. C., D. E. G., and J. C. H. data curation; J. S., R. M., W. F. G., and J. C. H. funding acquisition; J. S., D. K. S., T. C., C. T. M.-S., D. E. G., A. A. P., and J. C. H. investigation; J. S., D. K. S., T. C., C. T. M.-S., D. E. G., A. A. P., R. M., W. F. G., and J. C. H. methodology; J. S., A. A. P., R. M., W. F. G., and J. C. H. project administration; J. S., A. A. P., R. M., and J. C. H. supervision; J. S., D. K. S., and J. C. H. writing—original draft; J. S., D. K. S., C. T. M.-S., D. E. G., R. M., W. F. G., and J. C. H. writing—review and editing.

*Funding and additional information*—This work was supported by NIH grant 1R15GM106323-02 to J. C. H., and the University of Montana Center for Biomolecular Structure and Dynamics NIH grant P20GM103546. The content is solely the responsibility of the authors and does not necessarily represent the official views of the National Institutes of Health.

*Conflict of interest*—The authors declare that they have no conflicts of interest with the contents of this article.

*Abbreviations*—The abbreviations used are: ALG-2, apoptosis-linked gene-2; BHQ, 2,5-di-(*t*-butyl)-1,4-hydroquinone; CADEE, Ca<sup>2+</sup>-activated depression of ER export; ERES, ER exit site; NRK, normal rat kidney; PAEC, porcine aortic endothelial cell; PRR, proline-rich region; ROI, region of interest; SERCA, sarco-endoplasmic reticulum Ca<sup>2+</sup> ATPase; TCF, total cell fluorescence; UPR, unfolded protein response.

### References

- Ghaemmaghami, S., Huh, W.-K., Bower, K., Howson, R. W., Belle, A., Dephoure, N., O’Shea, E. K., and Weissman, J. S. (2003) Global analysis of protein expression in yeast. *Nature* **425**, 737–741
- Bi, X., Mancias, J. D., and Goldberg, J. (2007) Insights into COPII coat nucleation from the structure of Sec23.Sar1 complexed with the active fragment of Sec31. *Dev. Cell* **13**, 635–645
- Hughes, H., and Stephens, D. J. (2008) Assembly, organization, and function of the COPII coat. *Histochem. Cell Biol.* **129**, 129–151
- Stagg, S. M., LaPointe, P., Razvi, A., Gürkan, C., Potter, C. S., Carragher, B., and Balch, W. E. (2008) Structural basis for cargo regulation of COPII coat assembly. *Cell* **134**, 474–484
- Miller, E. A., and Barlowe, C. (2010) Regulation of coat assembly—sorting things out at the ER. *Curr. Opin. Cell Biol.* **22**, 447–453
- Tabata, K., Sato, K., Ide, T., Nishizaka, T., Nakano, A., and Noji, H. (2009) Visualization of cargo concentration by COPII minimal machinery in a planar lipid membrane. *EMBO J.* **28**, 3279–3289
- Bentley, M., Nycz, D. C., Joglekar, A., Fertschai, I., Malli, R., Graier, W. F., and Hay, J. C. (2010) Vesicular calcium regulates coat retention,

## ALG-2 and peflin regulate secretion

- fusogenicity, and size of pre-Golgi intermediates. *Mol. Biol. Cell* **21**, 1033–1046
- Helm, J. R., Bentley, M., Thorsen, K. D., Wang, T., Foltz, L., Oorschot, V., Klumperman, J., and Hay, J. C. (2014) Apoptosis-linked gene-2 (ALG-2)/Sec31 interactions regulate endoplasmic reticulum (ER)-to-Golgi transport: A potential effector pathway for luminal calcium. *J. Biol. Chem.* **289**, 23609–23628
  - Maki, M., Kitaura, Y., Satoh, H., Ohkouchi, S., and Shibata, H. (2002) Structures, functions and molecular evolution of the penta-EF-hand Ca<sup>2+</sup>-binding proteins. *Biochim. Biophys. Acta* **1600**, 51–60
  - Yamasaki, A., Tani, K., Yamamoto, A., Kitamura, N., and Komada, M. (2006) The Ca<sup>2+</sup>-binding protein ALG-2 is recruited to endoplasmic reticulum exit sites by Sec31A and stabilizes the localization of Sec31A. *Mol. Biol. Cell* **17**, 4876–4887
  - Shibata, H., Suzuki, H., Yoshida, H., and Maki, M. (2007) ALG-2 directly binds Sec31A and localizes at endoplasmic reticulum exit sites in a Ca<sup>2+</sup>-dependent manner. *Biochem. Biophys. Res. Commun.* **353**, 756–763
  - la Cour, J. M., Mollerup, J., and Berchtold, M. W. (2007) ALG-2 oscillates in subcellular localization, untemporally with calcium oscillations. *Biochem. Biophys. Res. Commun.* **353**, 1063–1067
  - Shibata, H., Inuzuka, T., Yoshida, H., Sugiura, H., Wada, I., and Maki, M. (2010) The ALG-2 binding site in Sec31A influences the retention kinetics of Sec31A at the endoplasmic reticulum exit sites as revealed by live-cell time-lapse imaging. *Biosci. Biotechnol. Biochem.* **74**, 1819–1826
  - Kitaura, Y., Matsumoto, S., Satoh, H., Hitomi, K., and Maki, M. (2001) Peflin and ALG-2, members of the penta-EF-hand protein family, form a heterodimer that dissociates in a Ca<sup>2+</sup>-dependent manner. *J. Biol. Chem.* **276**, 14053–14058
  - Kitaura, Y., Satoh, H., Takahashi, H., Shibata, H., and Maki, M. (2002) Both ALG-2 and peflin, penta-EF-hand (PEF) proteins, are stabilized by dimerization through their fifth EF-hand regions. *Arch. Biochem. Biophys.* **399**, 12–18
  - Rayl, M., Truitt, M., Held, A., Sargeant, J., Thorsen, K., and Hay, J. C. (2016) Penta-EF-hand protein peflin is a negative regulator of ER-to-Golgi transport. *PLoS One* **11**, e0157227
  - la Cour, J. M., Schindler, A. J., Berchtold, M. W., and Schekman, R. (2013) ALG-2 attenuates COPII budding *in vitro* and stabilizes the Sec23/Sec31A complex. *PLoS One* **8**, e75309
  - Shibata, H., Kanadome, T., Sugiura, H., Yokoyama, T., Yamamuro, M., Moss, S. E., and Maki, M. (2015) A new role for annexin A11 in the early secretory pathway via stabilizing Sec31A protein at the endoplasmic reticulum exit sites (ERES). *J. Biol. Chem.* **290**, 4981–4993
  - Yoshibori, M., Yorimitsu, T., and Sato, K. (2012) Involvement of the penta-EF-hand protein Pef1p in the Ca<sup>2+</sup>-dependent regulation of COPII subunit assembly in *Saccharomyces cerevisiae*. *PLoS One* **7**, e40765
  - McGourty, C. A., Akopian, D., Walsh, C., Gorur, A., Werner, A., Schekman, R., Bautista, D., and Rape, M. (2016) Regulation of the CUL3 ubiquitin ligase by a calcium-dependent co-adaptor. *Cell* **167**, 525–538.e14
  - Takahashi, T., Kojima, K., Zhang, W., Sasaki, K., Ito, M., Suzuki, H., Kawasaki, M., Wakatsuki, S., Takahara, T., Shibata, H., and Maki, M. (2015) Structural analysis of the complex between penta-EF-hand ALG-2 protein and Sec31A peptide reveals a novel target recognition mechanism of ALG-2. *Int. J. Mol. Sci.* **16**, 3677–3699
  - Rivera, V. M., Wang, X., Wardwell, S., Courage, N. L., Volchuk, A., Keenan, T., Holt, D. A., Gilman, M., Orci, L., Cerasoli, F., Rothman, J. E., and Clackson, T. (2000) Regulation of protein secretion through controlled aggregation in the endoplasmic reticulum. *Science* **287**, 826–830
  - Bonnon, C., Wendeler, M. W., Paccaud, J.-P., and Hauri, H.-P. (2010) Selective export of human GPI-anchored proteins from the endoplasmic reticulum. *J. Cell Sci.* **123**, 1705–1715
  - Gordon, D. E., Bond, L. M., Sahlender, D. A., and Peden, A. A. (2010) A targeted siRNA screen to identify SNAREs required for constitutive secretion in mammalian cells. *Traffic* **11**, 1191–1204
  - Ma, W., Goldberg, E., and Goldberg, J. (2017) ER retention is imposed by COPII protein sorting and attenuated by 4-phenylbutyrate. *Elife* **6**, e26624
  - Saito, K., Chen, M., Bard, F., Chen, S., Zhou, H., Woodley, D., Polischuk, R., Schekman, R., and Malhotra, V. (2009) TANGO1 facilitates cargo loading at endoplasmic reticulum exit sites. *Cell* **136**, 891–902
  - Wilson, D. G., Phamluong, K., Li, L., Sun, M., Cao, T. C., Liu, P. S., Modrusan, Z., Sandoval, W. N., Rangell, L., Carano, R. A. D., Peterson, A. S., and Solloway, M. J. (2011) Global defects in collagen secretion in a Mia3/TANGO1 knockout mouse. *J. Cell Biol.* **193**, 935–951
  - McCaughey, J., Miller, V. J., Stevenson, N. L., Brown, A. K., Budnik, A., Heesom, K. J., Alibhai, D., and Stephens, D. J. (2016) TFG promotes organization of transitional ER and efficient collagen secretion. *Cell Rep.* **15**, 1648–1659
  - Raote, I., Ortega-Bellido, M., Santos, A. J., Foresti, O., Zhang, C., Garcia-Parajo, M. F., Campelo, F., and Malhotra, V. (2018) TANGO1 builds a machine for collagen export by recruiting and spatially organizing COPII, tethers and membranes. *Elife* **7**, e32723
  - Omari, S., Makareeva, E., Roberts-Pilgrim, A., Mirigian, L., Jarnik, M., Ott, C., Lippincott-Schwartz, J., and Leikin, S. (2018) Noncanonical autophagy at ER exit sites regulates procollagen turnover. *Proc. Natl. Acad. Sci. U. S. A.* **115**, E10099–E10108
  - Madreiter-Sokolowski, C. T., Waldeck-Weiermair, M., Bourguignon, M.-P., Villeneuve, N., Gottschalk, B., Klec, C., Stryeck, S., Radulovic, S., Parichatikanond, W., Frank, S., Madl, T., Malli, R., and Graier, W. F. (2019) Enhanced inter-compartmental Ca<sup>2+</sup> flux modulates mitochondrial metabolism and apoptotic threshold during aging. *Redox Biol.* **20**, 458–466
  - Hu, H., Tian, M., Ding, C., and Yu, S. (2018) The C/EBP homologous protein (CHOP) transcription factor functions in endoplasmic reticulum stress-induced apoptosis and microbial infection. *Front. Immunol.* **9**, 3083
  - Veglia, E., Grange, C., Pini, A., Moggio, A., Lanzi, C., Camussi, G., Chazot, P. L., and Rosa, A. C. (2015) Histamine receptor expression in human renal tubules: A comparative pharmacological evaluation. *Inflamm. Res.* **64**, 261–270
  - Rauter, T., Burgstaller, S., Gottschalk, B., Ramadani-Muja, J., Bischof, H., Hay, J. C., Graier, W. F., and Malli, R. (2020) ER-to-Golgi transport in HeLa cells displays high resilience to Ca<sup>2+</sup> and energy stresses. *Cells* **9**, 2311
  - Maki, M., and Shibata, H. (2007) The penta-EF-hand protein ALG-2 and its interacting proteins. *Calcium Bind. Proteins* **2**, 4–10
  - Takahara, T., Inoue, K., Arai, Y., Kuwata, K., Shibata, H., and Maki, M. (2017) The calcium-binding protein ALG-2 regulates protein secretion and trafficking via interactions with MISSL and MAP1B. *J. Biol. Chem.* **292**, 17057–17072
  - Jin, L., Pahuja, K. B., Wickliffe, K. E., Gorur, A., Baumgärtel, C., Schekman, R., and Rape, M. (2012) Ubiquitin-dependent regulation of COPII coat size and function. *Nature* **482**, 495–500
  - Cho, H. J., and Mook-Jung, I. (2020) Amyloid beta regulates ER exit sites formation through O-GlcNAcylation triggered by disrupted calcium homeostasis. *Biol. Cell* **112**, 439–451
  - Cho, H. J., and Mook-Jung, I. (2018) O-GlcNAcylation regulates endoplasmic reticulum exit sites through Sec31A modification in conventional secretory pathway. *FASEB J.* **32**, 4641–4657
  - Sasaki-Osugi, K., Imoto, C., Takahara, T., Shibata, H., and Maki, M. (2013) Nuclear ALG-2 protein interacts with Ca<sup>2+</sup> homeostasis endoplasmic reticulum protein (CHERP) Ca<sup>2+</sup>-dependently and participates in regulation of alternative splicing of inositol trisphosphate receptor type 1 (IP3R1) pre-mRNA. *J. Biol. Chem.* **288**, 33361–33375
  - Ireland, S., Ramnarayanan, S., Fu, M., Zhang, X., Zhang, J., Li, J., Emebo, D., and Wang, Y. (2020) Cytosolic Ca<sup>2+</sup> modulates Golgi structure through PKC $\alpha$ -mediated GRASP55 phosphorylation. *iScience* **23**, 100952
  - Lefrancois, L., and Lyles, D. S. (1982) The interaction of antibody with the major surface glycoprotein of vesicular stomatitis virus. I. Analysis of neutralizing epitopes with monoclonal antibodies. *Virology* **121**, 157–167
  - Hammond, A. T., and Glick, B. S. (2000) Dynamics of transitional endoplasmic reticulum sites in vertebrate cells. *Mol. Biol. Cell* **11**, 3013–3030