



## Data for wetlandscapes and their changes around the world

Navid Ghajarnia<sup>1</sup>, Georgia Destouni<sup>1</sup>, Josefin Thorslund<sup>1</sup>, Zahra Kalantari<sup>1</sup>, Imenne Åhlén<sup>1</sup>,  
Jesús A. Anaya-Acevedo<sup>2</sup>, Juan F. Blanco-Libreros<sup>3</sup>, Sonia Borja<sup>1</sup>, Sergey Chalov<sup>4</sup>,  
Aleksandra Chalova<sup>4</sup>, Kwok P. Chun<sup>5</sup>, Nicola Clerici<sup>6</sup>, Amanda Desormeaux<sup>7</sup>, Bethany B. Garfield<sup>8</sup>,  
Pierre Girard<sup>9</sup>, Olga Gorelits<sup>10</sup>, Amy Hansen<sup>11</sup>, Fernando Jaramillo<sup>1,12</sup>, Jerker Jarsjö<sup>1</sup>,  
Adnane Labbaci<sup>13</sup>, John Livsey<sup>1</sup>, Giorgos Maneas<sup>1,14</sup>, Kathryn McCurley Pisarello<sup>15</sup>,  
Sebastián Palomino-Ángel<sup>2</sup>, Jan Pietron<sup>1,16</sup>, René M. Price<sup>17</sup>, Victor H. Rivera-Monroy<sup>18</sup>,  
Jorge Salgado<sup>19,20</sup>, A. Britta K. Sannel<sup>1</sup>, Samaneh Seifollahi-Aghmiuni<sup>1</sup>, Ylva Sjöberg<sup>21</sup>, Pavel Terskii<sup>22</sup>,  
Guillaume Vigouroux<sup>1</sup>, Lucia Licero-Villanueva<sup>23</sup>, and David Zamora<sup>24</sup>

<sup>1</sup>Department of Physical Geography and Bolin Center for Climate Research,  
Stockholm University, 10691, Stockholm, Sweden

<sup>2</sup>Facultad de Ingeniería, Universidad de Medellín, Carrera 87 30–65, Medellín 050026, Colombia

<sup>3</sup>Instituto de Biología, Facultad de Ciencias Exactas y Naturales, Universidad de Antioquia,  
Calle 70 No. 52-21, Medellín 050010, Colombia

<sup>4</sup>Faculty of Geography, Lomonosov Moscow State University, Moscow  
119991, Russia

<sup>5</sup>Department of Geography, Hong Kong Baptist University, Hong Kong SAR, China

<sup>6</sup>Department of Biology, Faculty of Natural Sciences and Mathematics,  
Universidad del Rosario, Bogotá 13409, DC, Colombia

<sup>7</sup>School of Natural Resources and Environment, University of Florida, Gainesville, Florida 32603, USA

<sup>8</sup>Department of Geography and Anthropology, Louisiana State University, Baton Rouge, Louisiana 70803, USA

<sup>9</sup>Centro de Pesquisa do Pantanal and BioScience Institute, Federal University of Mato Grosso, Cuiabá, Mato  
Grosso, Brazil

<sup>10</sup>Zubov State Oceanographic Institute, Moscow 119034, Russia

<sup>11</sup>Department of Civil, Environmental and Architectural Engineering,  
University of Kansas, Lawrence, Kansas 66045, USA

<sup>12</sup>Baltic Sea Centre, 10691, Stockholm, Sweden

<sup>13</sup>Department of Geology, Faculty of Sciences, Ibn Zohr University, Agadir, Morocco

<sup>14</sup>Navarino Environmental Observatory, 24 001 Messinia, Greece

<sup>15</sup>Department of Soil and Water Sciences, University of Florida, Gainesville, Florida 32611, USA

<sup>16</sup>WSP Sverige AB, Ullevigatan 19, Gothenburg, 411 40, Sweden

<sup>17</sup>Department of Earth and Environment, Southeast Environmental Research Center,  
Florida International University, Miami, Florida 33199, USA

<sup>18</sup>Department of Oceanography and Coastal Sciences, College of the Coast and Environment,  
Louisiana State University, Baton Rouge, Louisiana 70803, USA

<sup>19</sup>Departamento de Ciencias Biológicas, Universidad de Los Andes,  
Cra. 1 No. 18A-12, Bogotá 111711, Colombia

<sup>20</sup>Facultad de Ingeniería, Universidad Católica de Colombia, Av. Caracas No. 46-72, Bogotá 111311, Colombia

<sup>21</sup>Department of Geosciences and Natural Resource Management, Centre for Permafrost (CENPERM),  
University of Copenhagen, Copenhagen, Denmark

<sup>22</sup>Faculty of Geography, Lomonosov Moscow State University,  
Moscow 119991, Russia

<sup>23</sup>Institute of Botany and Landscape Ecology, University of Greifswald, Greifswald 17489, Germany

<sup>24</sup>Civil and Agricultural Department, Universidad Nacional de Colombia, Bogotá 13409, Colombia

**Correspondence:** Navid Ghajarnia (navid.ghajarnia@natgeo.su.se)

Received: 23 October 2019 – Discussion started: 18 December 2019

Revised: 17 March 2020 – Accepted: 3 April 2020 – Published: 13 May 2020

**Abstract.** Geography and associated hydrological, hydroclimate and land-use conditions and their changes determine the states and dynamics of wetlands and their ecosystem services. The influences of these controls are not limited to just the local scale of each individual wetland but extend over larger landscape areas that integrate multiple wetlands and their total hydrological catchment – the wetlandscape. However, the data and knowledge of conditions and changes over entire wetlandscapes are still scarce, limiting the capacity to accurately understand and manage critical wetland ecosystems and their services under global change. We present a new Wetlandscape Change Information Database (WetCID), consisting of geographic, hydrological, hydroclimate and land-use information and data for 27 wetlandscapes around the world. This combines survey-based local information with geographic shapefiles and gridded datasets of large-scale hydroclimate and land-use conditions and their changes over whole wetlandscapes. Temporally, WetCID contains 30-year time series of data for mean monthly precipitation and temperature and annual land-use conditions. The survey-based site information includes local knowledge on the wetlands, hydrology, hydroclimate and land uses within each wetlandscape and on the availability and accessibility of associated local data. This novel database (available through PANGAEA <https://doi.org/10.1594/PANGAEA.907398>; Ghajarnia et al., 2019) can support site assessments; cross-regional comparisons; and scenario analyses of the roles and impacts of land use, hydroclimatic and wetland conditions, and changes in whole-wetlandscape functions and ecosystem services.

## 1 Introduction

Wetlands contribute more than 20% of the total value of global ecosystem services (Costanza et al., 2014), while covering only a small percentage (4%–9%) of global land surface (Morganti et al., 2019; Zedler and Kercher, 2005; Mitsch and Gosselink, 2000). Wetlands are associated with a diverse range of functions, such as water quality remediation (e.g., Chalov et al., 2017; Quin et al., 2015), regulation of soil moisture and groundwater replenishment (e.g., Ameli and Creed, 2019; Golden et al., 2017), flood control (e.g., Quin and Destouni, 2018; Acreman and Holden, 2013), and biodiversity conservation (e.g., Cohen et al., 2016; Mitchell et al., 2008). Through these functions, wetlands can support regional sustainability (Seifollahi-Aghmiuni et al., 2019) but are also one of the most vulnerable ecosystems globally (Golden et al., 2017). For instance, human land and/or water use developments (Destouni et al., 2013; Jaramillo and Destouni, 2015; Maneas et al., 2019) in combination with climate variability and change (Orth and Destouni, 2018; Seneviratne et al., 2006) affect large-scale water fluxes, with impacts on wetland functions and ecosystem services. These impacts extend over coupled systems of multiple wetlands and the associated total hydrological catchment that integrates these, referred to as a wetlandscape (Thorslund et al., 2017), with even well-intended actions towards various sustainable development goals potentially affecting wetland functions and services in different directions (Jaramillo et al., 2019). As a consequence of various change impacts, wet-

land areas are now suffering rapid and continued decline in different regions worldwide (Davidson et al., 2018; Davidson, 2014).

The scale mismatch between the existing large-scale studies of various landscape changes and the still mostly local wetland impact studies (Thorslund et al., 2017) creates an urgent need for comprehensive, science-based assessment of the interactions between large-scale drivers of change and large-scale wetland systems (Ameli and Creed, 2019; Creed et al., 2017). Adopting a wetlandscape perspective involves moving away from the individual wetland scale to consider the large-scale functioning of the hydrologically coupled system of multiple wetlands and their surrounding landscape. Assessments at these larger scales are needed to enable the formulation of scientific evidence-based guidance and strategies to protect wetlands under global change (Thorslund et al., 2018; Ameli and Creed, 2019). The conceptual framework on wetlandscapes was developed over 30 years ago, by Preston and Bedford (1988), but the dynamics and impacts of many large-scale drivers or functions at wetlandscape scales remain still largely uninvestigated and unknown, with the interactions between large-scale hydroclimatic variability and change and wetland dynamics still being largely underexplored at the wetlandscape scale (Thorslund et al., 2017). The combination of high wetland vulnerability and rapid large-scale changes subject to major knowledge and data gaps highlights the need to synthesize and create datasets available for evaluating change effects and feedbacks at the scales of whole wetlandscapes.

To address this need and support large-scale studies of whole wetlandscapes in and across different parts of the world, we have created a novel database, named the Wetland-Change Information Database (WetCID), for 27 wetlandscapes around the world and their associated geographical, wetland, hydrology, hydroclimate and land-use conditions. WetCID consists of a survey-based collection of local information and data, combined with compilation and synthesis of gridded large-scale datasets for a range of relevant hydroclimatic and land-use variables.

The remainder of this paper is structured as follows: in Sect. 2, we describe the methodology used in collecting, processing and summarizing different datasets. In Sect. 3, we present WetCID summaries and sample figures and maps from different components of the underlying datasets in order to exemplify and highlight the potential of new insights that can be gained from using this database as well as its limitations. In Sect. 4, we discuss data availability and the format and structure of different files in WetCID. Based on the findings, we present some conclusions in Sect. 5.

## 2 Methods

### 2.1 Data acquisition

In compilation of WetCID for the 27 wetlandscapes, we employed three sources of primary data. These were (1) local site survey data, depicting general characteristics of each wetlandscape (catchment) and its geographical characteristics (including shapefiles for its spatial extent) and associated hydrological, climate and land-use conditions and their observed or perceived changes; (2) gridded historical data time series of monthly precipitation and temperature from Climate Research Unit Time-Series version 4.02 (CRU\_TS4.02; Harris et al., 2014); and (3) historical data of annual land cover and its changes from the NOAA-HYDE dataset provided by the NOAA's National Climate Data Center (Jain et al., 2013; Meiyappan and Jain, 2012).

The survey for local site data was given to researchers within the Global Wetland Ecohydrological Network (GWEN) (<http://www.gwennetwork.se/>, last access: 9 May 2020). The GWEN researchers responding to the survey specified the relevant wetlandscape extent (total hydrological catchment with wetlands) and provided boundaries in GIS format for the 27 wetlandscapes, located as shown in Fig. 1. Information and data of all three types (local survey-based, hydroclimate, land use) were collected and synthesized for each of these wetlandscapes from all three sources (1–3). In addition to the local survey information, data on hydroclimate and land-use variables were thus also compiled from the global datasets in both gridded and aggregated form for each wetlandscape, as described further in the following.

### 2.2 Site information surveys

A questionnaire for collecting local site knowledge and information on the availability and accessibility of local data was developed during a GWEN workshop held in Santa Marta, Colombia, on 24–28 April 2018. The questionnaire was sent out by email after the workshop to all participating GWEN researchers. The researchers responding to it related their answers to a specific wetlandscape in which they had active research.

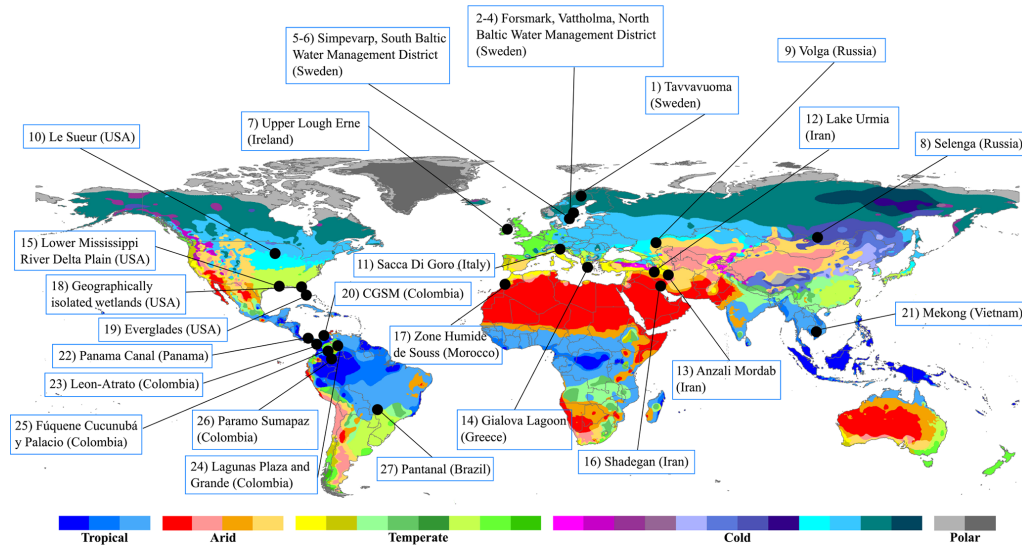
The questionnaire comprised two main parts. Part 1 contained general questions about the geography, climate, hydrology, and wetland-relevant human activities and changes in the wetlandscapes. Part 2 focused on the availability and accessibility of local site data, structured into “Hydroclimate”, “Land use” and “Other” data (see templates in the database files for a full outline of the questionnaire). The collective knowledge obtained on conditions and changes in the 27 wetlandscapes and on data availability–accessibility is summarized in Sect. 3.1.

To complement this local knowledge and information basis, we further extracted and synthesized data for the 27 wetlandscapes from relevant global hydroclimate and land-use datasets as described below.

### 2.3 Hydroclimate data

The temperature and precipitation data taken from the CRU\_TS4.02 global datasets (Harris et al., 2014) covered a 30-year period (1981–2010), to be consistent with the time span of existing global land-use change data. CRU\_TS4.02 provides hydroclimate data with spatial resolution of  $0.5^\circ \times 0.5^\circ$  and at a monthly temporal scale. In preparing temperature and precipitation datasets for each wetlandscape, the gridded data within the area of the wetlandscape were extracted from the global datasets and also spatially aggregated over that area, based on area-weighted averaging over the grid cells covered by the shapefile of each wetlandscape (catchment). This provided wetlandscape-specific data time series for each variable at each grid cell and aggregated over the whole wetlandscape. To facilitate analyses at different spatial resolutions, both the gridded and the aggregated time series were included in WetCID for each of the 27 wetlandscapes.

In addition to the gridded and aggregated data time series, period-specific temperature and precipitation changes were also calculated for each wetlandscape by dividing the total 30-year time span of the collected data into the two 15-year periods, 1981–1995 (Per1) and 1996–2010 (Per2). Such period-specific change quantification can facilitate relatively simple and straightforward analysis of how these hydroclimatic changes correlate with and may have driven other wetlandscape changes (e.g., in runoff, evapotranspiration, wetland area) between the same time periods (Destouni et al., 2013; Jaramillo and Destouni, 2014, 2015). Absolute and



**Figure 1.** Geographical distribution of the 27 wetlandscape sites included in WetCID. The background map shows the Köppen–Geiger climate classification system (updated by Peel et al., 2007), with the number of wetlandscapes extended from those included in similar GWEN-site mapping by Thorslund et al. (2017). The site numbering is in order of latitude from north to south, covering a latitude range from 70° N to 25° S.

relative (%) changes between these periods (AbsChng and RelChng, respectively) were calculated from the mean annual values of temperature and precipitation during Per1 and Per2 as

$$\text{AbsChng} = \overline{\text{Var}}_{\text{Per2}} - \overline{\text{Var}}_{\text{Per1}},$$

$$\text{RelChng} = \frac{\overline{\text{Var}}_{\text{Per2}} - \overline{\text{Var}}_{\text{Per1}}}{\overline{\text{Var}}_{\text{Per1}}} \times 100, \quad (1)$$

where  $\overline{\text{Var}}_{\text{Per1}}$  and  $\overline{\text{Var}}_{\text{Per2}}$  are average temperature (in °C) or precipitation (in mm yr<sup>-1</sup>) over Per1 (1981–1995) and Per2 (1996–2010), respectively. Equation (1) was applied to both temperature and precipitation data to calculate their absolute changes in each wetlandscape, while Eq. (2) was only applied to precipitation data to calculate the corresponding percentage change in precipitation.

## 2.4 Land-use data

The NOAA-HYDE dataset was used to estimate land uses and their changes in each wetlandscape. NOAA-HYDE estimates annual changes in land-cover area over the global land mass, starting from a base map for the year 1765. The estimations follow a predefined pathway, determined by relevant land-use and management datasets (cropland, pastureland, urbanization, timber harvesting), to obtain forest area distributions close to satellite-based estimates of forests in recent years (Meiyappan and Jain, 2012). NOAA-HYDE data cover the period 1770–2010 with yearly temporal resolution and spatial resolution of 0.5° × 0.5°, from which data for the period 1981–2010 were used for the development of this

database, consistent with the hydroclimate data period described above.

The NOAA-HYDE land-cover maps show the percentage of grid cell area containing 28 different land-cover types (see Table A1 in Appendix A). In this study, we reclassified these 28 land-cover types into 10 distinct land-cover types, namely urban, shrubland, grassland, pastureland, cropland, forest, water, desert, tundra and savannah, by combining similar land-cover classes (see Table A1). As done for the hydroclimate data, the gridded land-use data were also spatially aggregated over each wetlandscape based on the area-weighted averaging method (with weights of specific land-cover area in each grid cell relative to total wetlandscape area). This provided a wetlandscape-specific data time series of annual land use and land cover for each of the reclassified 10 land-cover types. The final WetCID files comprised gridded time series data on absolute grid cell area (in km<sup>2</sup>) covered by each land-cover type, time series data in percentage of grid cell area covered by each land-cover type, and aggregated absolute and percentage time series data for each wetlandscape area.

Analogous to the hydroclimatic changes, period-specific change quantification can facilitate relatively simple and straightforward analysis of how different types of land-use changes between time periods correlate with and may have driven associated wetlandscape changes (Destouni et al., 2013; Jaramillo and Destouni, 2015). Equation (1) was therefore also used to calculate absolute change in the area of each land-cover type (km<sup>2</sup>) within each wetlandscape between Per1 (1981–1995) and Per2 (1996–2010). In the land-use case,  $\overline{\text{Var}}_{\text{Per1}}$  and  $\overline{\text{Var}}_{\text{Per2}}$  represent annual average area cov-



ered by a land-cover type within each wetlandscape during Per1 and Per2, respectively. Furthermore, the corresponding change in relative land-cover area (ChngRel in % of total wetlandscape area) was calculated as

$$\text{ChngRel} = \frac{\overline{\text{VarPer2}} - \overline{\text{VarPer1}}}{\text{Area}_C} \times 100, \quad (2)$$

where  $\text{Area}_C$  is the total wetlandscape (catchment) area (in  $\text{km}^2$ ) and  $\overline{\text{VarPer1}}$  and  $\overline{\text{VarPer2}}$  are the annual average areas covered by each land-cover type in the wetlandscape during Per1 and Per2, respectively.

### 3 Results

#### 3.1 Site information surveys

Table 1 summarizes some general geographical, climate and wetland type information provided by GWEN researchers in the survey information forms. Each site represents either an individual wetland or a wetlandscape (e.g., a catchment) including multiple wetlands. The country, main climate zone and wetland area relative to total wetlandscape (catchment) area are also given for each site in Table 1. Moreover, a summary of the availability–accessibility of local data on the wetlands, hydrology, climate and land uses as well as the wetlandscape (catchment) area in each of the 27 wetlandscapes is also shown in Fig. 2. The variables of evapotranspiration and soil moisture were revealed as having large data gaps (red color in Fig. 2), indicating an overall need to use other data sources (e.g., gridded global data products) for quantifying these variables and associated processes. Figure 2 also highlights the variability in data availability and open accessibility among the sites. For instance, no open-access data sources have been reported for the considered variables in the arid subtropical sites 13, 16 and 17, whereas open-access data sources have been reported for most variables in the cold Swedish sites 4 and 6 and the American subtropical sites 15 and 19.

The synthesized survey dataset also contains information about different types of wetland, hydroclimatic and/or land-use changes observed or perceived to have occurred in the 27 investigated wetlandscapes (Fig. 3). Substantial changes are reported for most of these wetlandscapes, but a few sites have no known changes (e.g., in the arid Moroccan site 17) or have important knowledge gaps regarding changes (e.g., in the cold Swedish sites 2 and 5, even though availability to at least some data is relatively good there). The information on local data availability–accessibility (Fig. 2) and observed or perceived change occurrence (Fig. 3) summarized and structured in WetCID can guide further study directions and support identification of key needs for complementary new local data and/or use of additional large-scale (regional-global) gridded data. Furthermore, the wetlandscapes of WetCID are located in different regions of the world, with seven sites in northern Europe (sites 1–7), seven in the Amazon and

Caribbean region (sites 20 and 23–27), four in North America (sites 10, 15, 18 and 19), three in the Middle East (sites 12, 13 and 16), two in the Mediterranean region (sites 11 and 14), two in Siberia (sites 8 and 9), and two more in other parts of the world (northern Africa and eastern Asia). As such, regional patterns and characteristics can be identified and regional strategies developed, e.g., to enhance availability of data and information and determine further research needed to bridge region-specific knowledge gaps and decide on relevant management plans for each region's wetland ecosystems. Such regional characterizations and assessments can be initialized with the current version of WetCID and further updated as more data for already-included and possible additional regional wetlandscapes become available in future database versions.

#### 3.2 Hydroclimatic data

Data for long-term average temperature and precipitation conditions, and changes in these between Per1 (1981–1995) and Per2 (1996–2010) at the 27 wetlandscape sites, are presented in Fig. 4. The horizontal axis in the diagrams shows the wetlandscape site numbers in order of their latitude from north to south, covering the latitude range from  $70^\circ$  N to  $25^\circ$  S. The increase in average temperature and precipitation with decreasing latitude (Fig. 4a–b) illustrates that the wetlandscapes also cover a wide range of hydroclimate conditions, from low to high temperature and precipitation values (see also Fig. 1). Temperature has increased over almost all wetlandscapes and considerably more so in the more northern and colder areas than in the warmer areas around and south of the Equator (Fig. 4a–b). In contrast, precipitation changes are relatively small, varying around zero, in the more northern, colder and drier areas, while precipitation has mostly increased in the warmer and also wetter areas around and south of the Equator (Fig. 4c–e). Overall, the changes in mean annual temperature range from zero to  $+1^\circ\text{C}$ , while the changes in precipitation range from  $-70$  to  $+170 \text{ mm yr}^{-1}$ , with the Iranian site (12) (Lake Urmia catchment) exhibiting the greatest increase in temperature ( $+1^\circ\text{C}$ ) and the greatest relative decrease in precipitation ( $-17\%$ ).

Figures 5 and 6 exemplify gridded variability and change data for temperature and precipitation over the Volga (no. 9) and the León–Atrato (no. 23) wetlandscapes. The data time series of wetlandscape-aggregated annual average temperature and precipitation in these wetlandscapes (Fig. 5) exemplify such data prepared and included in WetCID for all 27 wetlandscapes. These two wetlandscapes were chosen for data exemplification because they represent different hydroclimatic conditions, with Volga being cold and dry while León–Atrato is warm and wet (Fig. 5), as well as having different sizes, with Volga being the largest ( $1\,360\,000 \text{ km}^2$ ) and León–Atrato ( $2344 \text{ km}^2$ ) one of the smallest studied wetlandscapes. The data for these examples (Fig. 5) are consistent with corresponding data implications across the dif-

**Table 1.** General geographic, climate and wetland type information for the 27 investigated wetlandscapes in WetCID. The data and information are based on survey responses by researchers with active research (on various topics) at each wetlandscape site.

Site no.	Site name	Country	Classification	Climate zone	Wetland type	Area of wetlands relative to total catchment/wetlandscape area (%)
1	Tavvavuoma	Sweden	Wetlandscape	Subarctic	Peat plateau/thermokarst lake complex	2.8
2	Forsmark	Sweden	Wetlandscape	Humid continental (cold summer)	Bogs, fens, marshes, (shallow lakes)	0.01
3	Vattholma	Sweden	Wetlandscape	Humid continental (cold summer)	Bogs, fen, riparian	–
4	North Baltic WMD	Sweden	Wetlandscape	Humid continental (cold summer)	Multiple	100
5	Simpevarp	Sweden	Wetlandscape	Humid continental (cold summer)	Bogs, fens	0.01
6	South Baltic WMD	Sweden	Wetlandscape	Humid continental (cold summer)	Multiple	100
7	Upper Lough Erne	Ireland	Individual wetland	Cold (dry winter, cold summer)	Flood plain/shallow lakes	22
8	Selenga	Russia	Wetlandscape	Cold (dry winter, cold summer)	Marshes (riverine, palustrine)	0.13
9	Volga	Russia	Wetlandscape	Cold (dry winter, cold summer)	Marshes (riverine, palustrine)	1.0
10	Le Sueur	USA	Wetlandscape	Temperate	Isolated, fluvial/riparian, lakes/ponds, marshes, forest/shrubs, constructed	100
11	Sacca Di Goro	Italy	Individual wetland	Cold-summer Mediterranean	Shallow saltwater coastal lagoon	4.2
12	Lake Urmia	Iran	Individual wetland	Continental	Lake	8.8
13	Anzali Mordab	Iran	Individual wetland	Caspian or Hyrcanian climate	Inland and marine/coastal wetland	4.0
14	Gialova Lagoon	Greece	Individual wetland	Hot-summer Mediterranean	Coastal wetland	13
15	Lower Mississippi River Delta Plain	USA	Wetlandscape	Humid subtropical	Riverine, marine, estuarine, Lacustrine	3.5
16	Shadegan	Iran	Individual wetland	Warm desert	Palustrine, estuarine, marine	31
17	Zone Humide de Souss	Morocco	Individual wetland	Mediterranean semi-arid	Marine and coastal	0.01
18	Geographically isolated wetlands	USA	Wetlandscape	Humid subtropical	Freshwater marshes and swamps	100

Table 1. Continued.

Site no.	Site name	Country	Classification	Climate zone	Wetland type	Area of wetlands relative to total catchment/wet-landscape area (%)
19	Everglades	USA	Individual wetland	Tropical to subtropical	Freshwater wetland, coastal wetland	32
20	CGSM	Colombia	Individual wetland	Tropical	Estuarine	–
21	Mekong Delta	Vietnam	Wetlandscape	Tropical monsoon	Marine	5.0
22	Panama Canal	Panama	Wetlandscape	Tropical/Central America	Chagres River, lake	100
23	León–Atrato	Colombia	Wetlandscape	Tropical rainforest	Marshes and swamps	17
24	Lagunas Plaza and Grande	Colombia	Wetlandscape	Extremely cold and very dry	Glacial lake	4.4
25	Fúquene, Cucunubá y Palacio	Colombia	Individual wetland	Cold and very dry	Natural shallow lake	1.7
26	Sumapaz Páramo	Colombia	Wetlandscape	Tropical	High-altitude wetland	46
27	Pantanal	Brazil	Wetlandscape	Tropical savanna with dry winter	Periodically inundated savanna	27

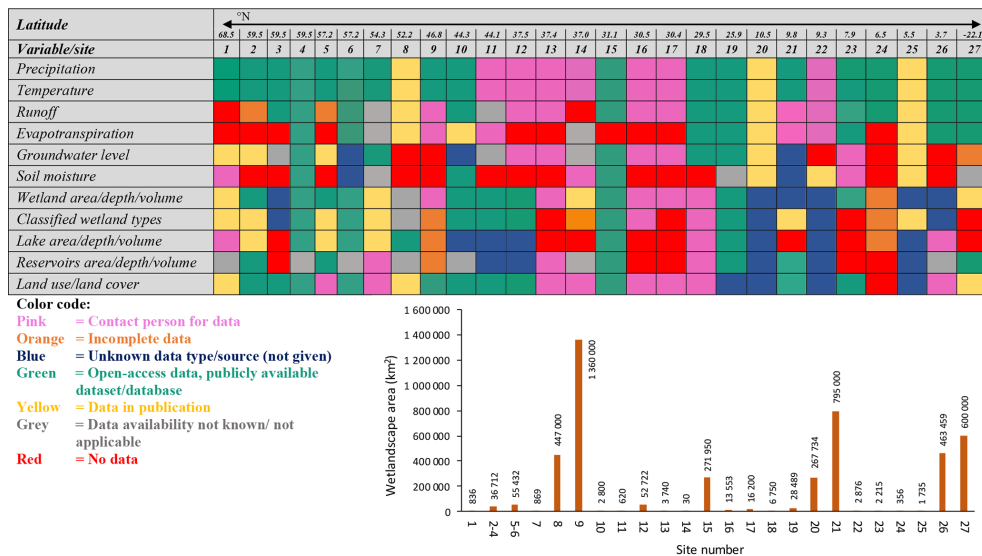
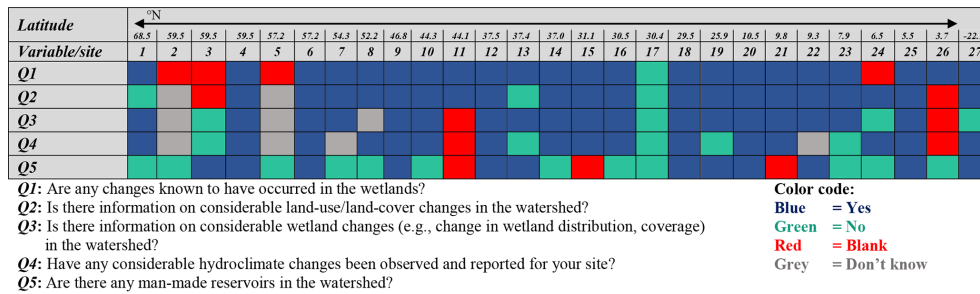
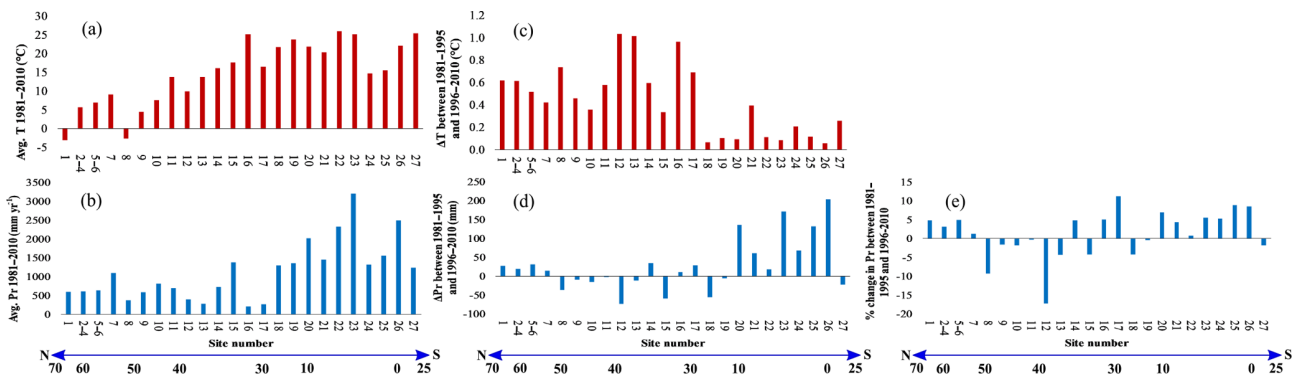


Figure 2. Availability–accessibility (color-coded) of site-specific climate and land-use data for the 27 investigated wetlandscapes in WetCID and associated wetlandscape area for each site (lower right diagram). The data availability–accessibility classification (color codes) is based on the survey responses by researchers with active research (on various topics) at each wetlandscape site.



**Figure 3.** Knowledge status regarding observed or perceived changes occurring in the 27 investigated wetlandscapes in WetCID. The color-coded status classification is based on survey responses by researchers with active research (on various topics) at each wetlandscape site.



**Figure 4.** Overview of hydroclimate conditions and their changes in the 27 wetlandscapes. Long-term average (1981–2010) (a) temperature ( $T$ ) and (b) precipitation ( $Pr$ ). Absolute change between Per1 (1981–1995) and Per2 (1996–2010) in (c) mean annual temperature and (d) mean annual precipitation. (e) Relative change in precipitation. The horizontal axis shows the numbering of the 27 wetlandscapes, sorted in order of their latitude from north to south.

ferent wetlandscapes over the world (Fig. 4) in indicating an overall positive (warmer–wetter) spatial correlation between long-term average temperature and precipitation. Temporally, however, the recent changes in these variables imply a negative correlation (towards warmer and mostly drier conditions) for the Volga wetlandscape (Fig. 6a and c) as for several other northern wetlandscapes in WetCID (Fig. 4). In contrast, a positive correlation (towards mostly warmer and wetter conditions) is implied by the recent temporal changes in the León–Atrato wetlandscape (Fig. 6b, d), as one of the most southern wetlandscapes in WetCID (Fig. 4). Such spatiotemporal sign shifts and dipole emergence in temperature–precipitation correlations have been noted in other recent studies of long-term variations and short-term changes of hydroclimate over Europe (Charpentier Ljungqvist et al., 2019). WetCID can facilitate further studies of these correlation conditions for and across the different wetlandscapes around the world.

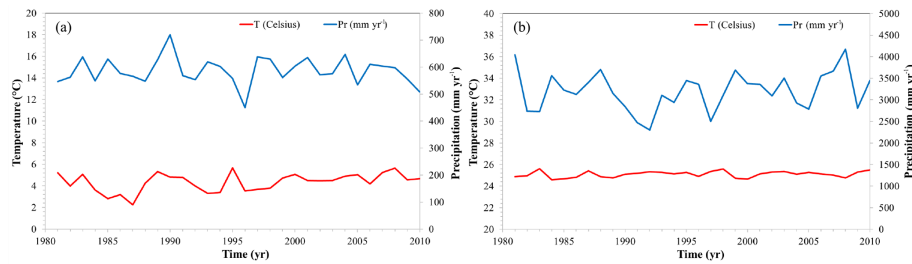
The data for the Volga and León–Atrato examples also emphasize that wetlandscapes can have very different area extents (spatial scales), with potentially important implications for the spatial resolution (Fig. 6) and related usefulness of data provided in WetCID. For example, the Volga wetlandscape includes 982 grid cells with complete or par-

tial coverage in the hydroclimate datasets, while the León–Atrato wetlandscape only includes four of such grid cells. Most of the available global datasets from climate and earth system models have coarser spatial resolution than the size of most individual wetlands. Thus, model data for individual wetlands are subject to high uncertainty, whereas data aggregated over whole wetlandscapes have greater potential for accuracy (Bring et al., 2015), highlighting the need for considering the whole-wetlandscape scales in assessments of how wetland systems interact with hydroclimate and land-use changes.

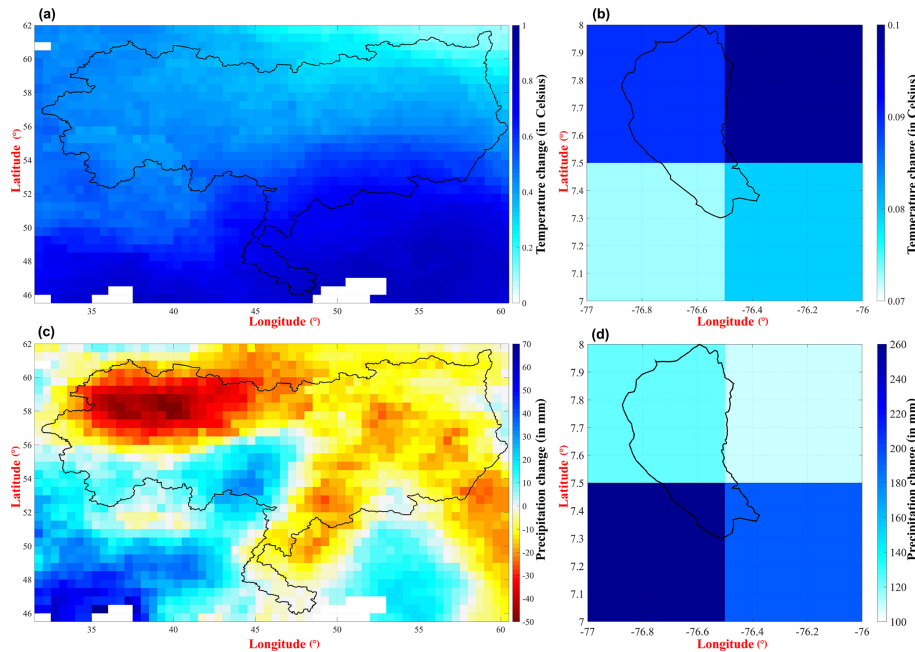
### 3.3 Land-use data

The aggregated and gridded land-use data in WetCID can also be used for different types of whole-wetlandscape analyses. Figure 7 summarizes the data for the long-term average relative area of each land-cover type (% of total wetlandscape area), and associated absolute area changes ( $\text{km}^2$ ) and changes in relative area coverage (% of total wetlandscape area), for different land-cover types across the 27 wetlandscapes. The data reveal, for example, the high percentage of forest area in wetlandscapes at high latitudes and in the tropics, while relative cropland area increases towards the





**Figure 5.** Variability in wetlandscape-aggregated annual average temperature and precipitation for the examples of the (a) Volga and (b) León–Atrato wetlandscapes.



**Figure 6.** Maps showing gridded absolute change in (a, b) temperature and (c, d) precipitation for the examples of the (a, c) Volga and (b, d) León–Atrato wetlandscapes. Absolute change values have been calculated by applying Eq. (1) to each grid cell within a wetlandscape.

temperate regions (Fig. 7a). Figure 7 also summarizes the different types of land-cover transformations, for example from “forest” into “cropland and pastureland” in the tropical Mekong wetlandscape (21), “pastureland” into “grassland” in the temperate Irish wetlandscape (7) and into “cropland” in the borderline cold–dry Iranian wetlandscape of the dramatically shrinking Lake Urmia (12) (Khazaei et al., 2019), “shrubland” into “cropland” in the borderline temperate Iranian wetlandscape (13), and “cropland” into “shrubland” in the warm temperate Greek wetlandscape (14).

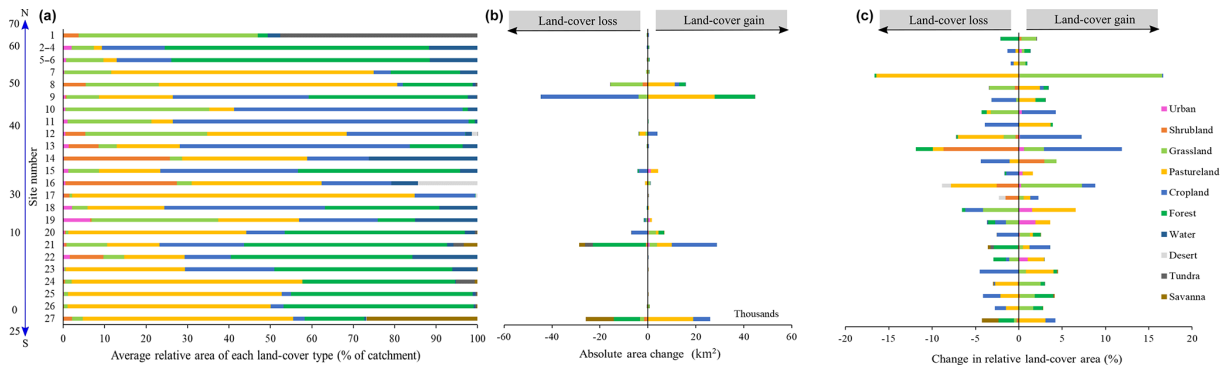
The data time series of different land-cover types and their changes between Per1 (1981–1995) and Per2 (1996–2010) show, for example, forest and (decreasing) cropland, followed by pastureland and grassland, to be dominant in the large Volga wetlandscape, while forest, pastureland and (decreasing) cropland areas dominate the small León–Atrato wetlandscape (Fig. 8). Gridded maps of land-cover area

changes in these wetlandscape examples (Figs. 9–10) again demonstrate large spatial-resolution differences, with potentially important implications for the usefulness of land-use datasets for wetlandscapes of smaller scales. For example, in the most northern Swedish–Arctic wetlandscape (1), grassland is obtained as the second most dominant land-cover type after tundra (Fig. 7a), which is not normally seen in this northern Arctic region.

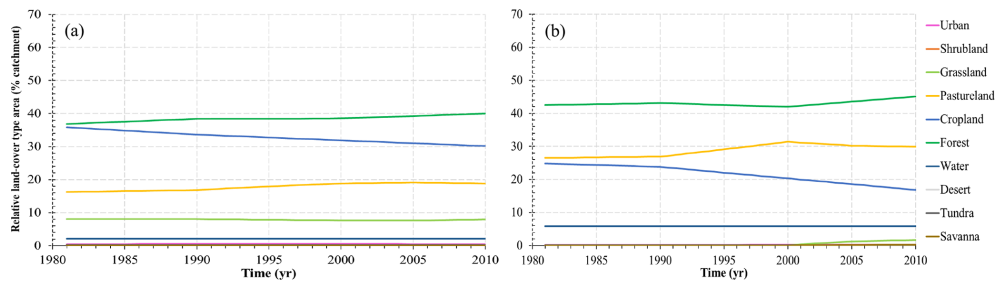
#### 4 Data availability

The complete WetCID database includes five file categories (<https://doi.org/10.1594/PANGAEA.907398>; Ghajarnia et al., 2019).

- *Folder 1: survey results (summary documents A, B, C).* These three summary documents (all in Excel) were created from responses obtained in the main survey of



**Figure 7.** (a) Long-term average relative area of each land-cover type (percentage of total wetlandscape area). (b) Absolute change in area of each land-cover type ( $\text{km}^2$ ). (c) Change in relative land-cover area (% in relation to total catchment area). The summarized and illustrated data are for the 27 wetlandscapes included in WetCID.



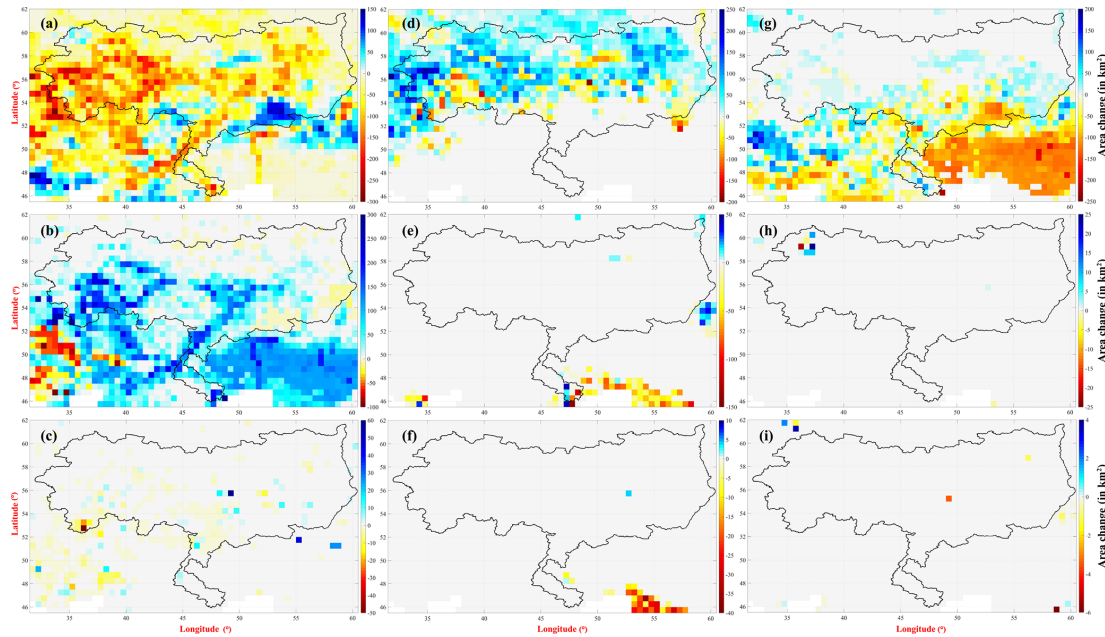
**Figure 8.** Data time series for wetlandscape-aggregated annual average area (relative to total wetlandscape area, in %) for different land-cover types in the (a) Volga and (b) León–Atrato wetlandscapes.

GWEN researchers (see survey template and structure in WetCID files). Summary document A contains summarized site-specific information on the wetlands, hydrology, climate and land uses in each of for the 27 wetlandscapes. Summary documents B and C contain local knowledge relating to the availability–accessibility (or lack) of land-use and hydroclimatic data, respectively, for each of the 27 wetlandscapes.

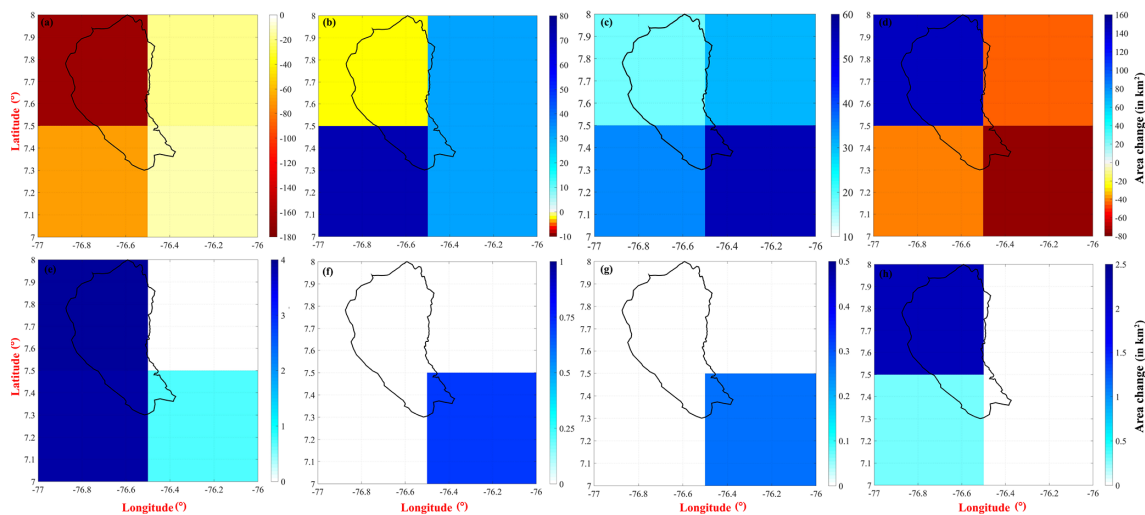
- *Folder 2: gridded land-use and hydroclimatic datasets (NetCDF database files).* In WetCID, there is a separate NetCDF file for each wetlandscape that contains a complete set of gridded hydroclimate and land-use data time series for the closest rectangular window around the catchment polygon of the wetlandscape. The gridded hydroclimate datasets were created by subsetting the CRU\_TS4.02 original global datasets over the area of each wetlandscape (catchment). The gridded land-use dataset for each wetlandscape (catchment) was created by first reclassifying the land-cover types and then subsetting the global gridded data. All these gridded data time series are saved in separate NetCDF files for each wetlandscape, which is an appropriate file type for storing gridded data. Each NetCDF file contains 18 variables, including hydroclimate, land-cover and some auxiliary variables. Appendix B presents the table of

general attributes (Table B1) and information and explanations of all 18 variables included in the NetCDF database files (Table B2). Sample MATLAB and R codes for reading and extracting data from the NetCDF files are also provided in Appendix C.

- *Folder 3: aggregated land-use and hydroclimate data (Excel databases).* The time series of land-use and hydroclimatic data aggregated over each wetlandscape (catchment) were created from the gridded datasets (NetCDF files) and stored as Excel files for each wetlandscape. The Excel file for each wetlandscape contains three sheets: (1) annual time series of covered area by each land-cover type (in  $\text{km}^2$ ), (2) time series of annual relative area (%) occupied by each land-cover type, and (3) time series of monthly temperature ( $^{\circ}\text{C}$ ) and precipitation (mm per month) data.
- *Folder 4: geographical dataset in a ZIP file (shapefiles).* To perform any spatial analysis of the wetlandscapes, one needs to have access to the shapefile and polygons of the wetlandscape (catchment) and wetlands within it. These shapefiles were provided by the GWEN researchers and can be downloaded from WetCID files.
- *Folder 5: summary tables of changes in hydroclimatic and land-use variables.* Absolute and relative changes



**Figure 9.** Gridded maps of absolute area changes (in km<sup>2</sup>) for (a) cropland, (b) pastureland, (c) urban, (d) forest, (e) shrubland, (f) desert, (g) grassland, (h) tundra and (i) water land-cover types between Per1 (1981–1995) and Per2 (1996–2010) in the Volga wetlandscape example.



**Figure 10.** Gridded maps of absolute area changes (in km<sup>2</sup>) for (a) cropland, (b) savanna, (c) forest, (d) shrubland, (e) grassland, (f) tundra, (g) pastureland and (h) urban land-cover types between Per1 (1981–1995) and Per2 (1996–2010) in the León–Atrato wetlandscape example.

in all considered hydroclimate and land-use variables between Per1 (1981–1995) and Per2 (1996–2010) were calculated using Eqs. (1), (2) and (3) for each wetlandscape. The results are summarized in an Excel file with two sheets for each wetlandscape: (1) absolute changes in temperature, precipitation and land-cover area and (2) relative changes in precipitation and land-cover area. The data for land-cover changes are provided for all considered land-use variables.

## 5 Conclusions

The presented new database (WetCID) combines survey-based local information and knowledge with gridded large-scale hydroclimate and land-use datasets for 27 wetlandscapes around the world. The gridded datasets contain 30-year time series of mean monthly precipitation and temperature along with annual average land uses and their changes over this time period for each wetlandscape. WetCID can support site assessments; cross-regional compar-

isons; and scenario analyses of the roles and impacts of various land-use, hydroclimatic and wetland conditions and their changes on whole-wetlandscape functions and associated ecosystem services. The information on local data availability–accessibility and observed or perceived change occurrence summarized and structured in WetCID can guide further study directions and support identification of key needs for complementary new local data and/or use of additional regional–global gridded datasets.

The gridded large-scale hydroclimatic and land-use data included in WetCID have been derived using open-access data sources and processed with open-source tools, while WetCID has been designed so that more data can readily be added to it. The site-specific usefulness of different included data varies for wetlandscapes of different scales, but WetCID can be updated with small time investment as new datasets become available or current datasets are expanded or refined.

**Appendix A: Summary of land-cover type parameters****Table A1.** List of all different land-cover types included in the NOAA-HYDE dataset and their corresponding reclassified category in WetCID.

Number	Land-cover name	Description	Reclassified category
1	TrpEBF	Tropical evergreen broadleaf forest	Forest
2	TrpDBF	Tropical deciduous broadleaf forest	Forest
3	TmpEBF	Temperate evergreen broadleaf forest	Forest
4	TmpENF	Temperate evergreen needleleaf forest	Forest
5	TmpDBF	Temperate deciduous broadleaf forest	Forest
6	BorENF	Boreal evergreen needleleaf forest	Forest
7	BorDNF	Boreal deciduous needleleaf forest	Forest
8	Savannah	Savannah	Savannah
9	C3grass	C3 grassland/steppe	Grassland
10	C4grass	C4 grassland/steppe	Grassland
11	Dense shrub	Dense shrubland	Shrubland
12	Open shrub	Open shrubland	Shrubland
13	Tundra	Tundra	Tundra
14	Desert	Desert	Desert
15	PdRI	Polar desert/rock/ice	Desert
16	SecTrpEBF	Secondary tropical evergreen broadleaf forest	Forest
17	SecTrpDBF	Secondary tropical deciduous broadleaf forest	Forest
18	SecTmpEBF	Secondary temperate evergreen broadleaf forest	Forest
19	SecTmpENF	Secondary temperate evergreen needleleaf forest	Forest
20	SecTmpDBF	Secondary temperate deciduous broadleaf forest	Forest
21	SecBorENF	Secondary boreal evergreen needleleaf forest	Forest
22	SecBorDNF	Secondary boreal deciduous needleleaf forest	Forest
23	Water	Water/rivers	Water
24	C3crop	C3 cropland	Cropland
25	C4crop	C4 cropland	Cropland
26	C3past	C3 pastureland	Pastureland
27	C4past	C4 pastureland	Pastureland
28	Urban	Urban land	Urban



## Appendix B: Description of parameters included in the NetCDF database files of WetCID

**Table B1.** General attributes table for NetCDF database files of WetCID.

Item	Description
project_name	Global Wetland Ecohydrology Network (GWEN) – An Agora for Scientists and Study Sites
project_summary	GWEN consists of a network of wetland researchers at study sites around the world who are all interested in sharing, investigating and applying research to improve knowledge on the large-scale function of, and changes to, wetland ecosystems.
project_website	<a href="http://www.gwennetwork.se/">http://www.gwennetwork.se/</a> (last access: 9 May 2020)
dataset	Land-use and climate data for the catchments of wetlands included in GWEN
comment	The dataset in this NetCDF file is created to represent the change in land use and land cover over the catchment area of each wetland site included in the GWEN project. Precipitation and temperature time series data are also included for climate considerations.
land use data_reference	NOAA-Historical Land-Cover Change and Land-Use Conversions Global Dataset_HYDE version ( <a href="https://data.nodc.noaa.gov/cgi-bin/iso?id=gov.noaa.ncdc:C00814">https://data.nodc.noaa.gov/cgi-bin/iso?id=gov.noaa.ncdc:C00814</a> , last access: 9 October 2018)
climate data_reference	Climate Research Unit (CRU) data CRU_TS4.02 ( <a href="https://crudata.uea.ac.uk/cru/data/hrg/cru_ts_4.02/">https://crudata.uea.ac.uk/cru/data/hrg/cru_ts_4.02/</a> , last access: 9 May 2020)
license	Please quote the following citation when using data
data_type	Grid
spatial_resolution	0.5 × 0.5 degrees latitude/longitude
institution	Dept. of Physical Geography, Stockholm University, Sweden
time_coverage_start	1981
time_coverage_end	2010
time_coverage_resolution	Yearly for land-cover data and monthly for climate data
date_created	19 May
core group of researchers determining the dataset	Georgia Destouni, Navid Ghajarnia, Zahra Kalantari, Josefin Thorslund
creator name	Navid Ghajarnia

**Table B2.** List and description of land-use and hydroclimate variables included in the NetCDF database files of WetCID.

Number	Variable name	Variable long name	Variable explanation
1	Longitude	Longitude	degrees_east
2	Latitude	Latitude	degrees_north
3	time_LCD	Time for land-cover datasets	Years since 1 Jan 2001
4	time_CD	Time for climate datasets	Days since 1 Jan 1900
5	Mask	Grids that have/have not overlapped with catchment area	Catchment area binary mask [0,1]
6	Area	Area of land grid cells	Units are in square kilometers
7	Urban	Urban land-cover type	Units are in percentage of grid cell area
8	Shrubland	Open/dense shrubland land-cover type	Units are in percentage of grid cell area
9	Grassland	Grassland/steppe land-cover type	Units are in percentage of grid cell area
10	Pastureland	Pastureland land-cover type	Units are in percentage of grid cell area
11	Cropland	Cropland land-cover type	Units are in percentage of grid cell area
12	Forest	Tropical, temperate, boreal evergreen, deciduous broadleaf, needleleaf forest land-cover type	Units are in percentage of grid cell area
13	Water	Water/rivers land-cover type	Units are in percentage of grid cell area
14	Desert	Desert/polar desert/rock/ice land-cover type	Units are in percentage of grid cell area
15	Tundra	Tundra land-cover type	Units are in percentage of grid cell area
16	Savannah	Savannah land-cover type	Units are in percentage of grid cell area
17	Prcp	Precipitation	Units are in millimeters per month
18	Tmp	Near-surface temperature	Units are in degrees Celsius

## Appendix C: Sample codes to read NetCDF database files included in WetCID

### C1 MATLAB sample code

```
info=ncinfo('File_Name.nc'); % replace  
File_Name with the name of NetCDF file for each wetland-  
scape. This command gets the complete description for all  
the general attributes as well as detailed information of all  
existing variables in the NetCDF file.
```

```
Var=ncread('File_Name.nc',  
'Variable_Name'); % replace Variable_Name with the  
"Variable name" column in Table B2 for extracting different  
variable data from each wetlandscape NetCDF file.
```

### C2 R sample code

```
install.packages("ncdf4")  
library(ncdf4)  
ncf <- nc_open("File_Name.nc") # replace  
File_Name with the name of NetCDF file for each wetland-  
scape. This command opens the NetCDF file in RStudio en-  
vironment.
```

```
names(ncf$var) # extracting the name of existing  
variables in the NetCDF file.
```

```
Var <- ncvar_get(ncf, "Variable_Name")  
# replace Variable_Name with the "Variable name" column  
in Table B2 for extracting different variable data from each  
wetlandscape NetCDF file.
```

**Author contributions.** NG compiled the climate and land-use database, contributed to the communication with other co-authors for the wetland data collection, and was mainly responsible for analyzing the data and writing the paper. GD conceived and led the study and the development of WetCID and analysis approach, led the communication with other co-authors, and contributed to the result analysis and writing of the paper. JT conceived the idea of the data paper type; was mainly responsible for collecting and compiling the local survey information and its summary and analysis in the paper; and contributed to communication with co-authors, the result analysis and the writing. ZK contributed to the communication with co-authors, the database development, and the result analysis and writing. All other co-authors contributed by providing local site information in the survey forms and/or taking part in discussions for planning and outlining the study.

**Competing interests.** The authors declare that they have no conflict of interest.

**Acknowledgements.** The Historical Land-Cover Change and Land-Use Conversions Global Dataset used in this study was acquired from NOAA's National Climatic Data Center (<http://www.ncdc.noaa.gov/>, last access: 9 October 2018). The temperature and precipitation data were also retrieved from the CRU\_TS4.02 global database (<https://crudata.uea.ac.uk/cru/data/hrg/>, last access: 9 May 2019).

**Financial support.** This research has been supported by funding from the Swedish Research Council Formas (grant no. 2016-2045), the Russian RFBR project (grant nos. 17-29-05027 and 18-05-60219), the Russian Science Foundation project 14-17-00155 and the United States National Science Foundation (grant no. DEB-1237517, contribution number 958 from the Southeast Environmental Research Center at Florida International University).

**Review statement.** This paper was edited by Alexander Gelfan and reviewed by two anonymous referees.

## References

- Acreman, M. and Holden, J.: How wetlands affect floods, *Wetlands*, 33, 773–786, 2013.
- Ameli, A. A. and Creed, I. F.: Groundwaters at Risk: Wetland Loss Changes Sources, Lengthens Pathways, and Decelerates Rejuvenation of Groundwater Resources, *J. Am. Water Resour. Assoc.*, 55, 294–306, <https://doi.org/10.1111/1752-1688.12690>, 2019.
- Bring, A., Asokan, S. M., Jaramillo, F., and Jarsj, J.: Implications of freshwater flux data from the CMIP5 multimodel output across a set of Northern Hemisphere drainage basins, *Earth's Future*, 3, 206–217, 2015.
- Chalov, S., Thorslund, J., Kasimov, N., Aybullaev, D., Ilyicheva, E., Karthe, D., Kositsky, A., Lychagin, M., Nittrouer, J., Pavlov, M., Pietron, J., Shinkareva, G., Tarasov, M., Garmayev, E., Akhtman, Y., and Jarsjö, J.: The Selenga River delta: A geochemical barrier protecting Lake Baikal waters, *Reg. Environ. Chang.*, 17, 2039–2053, 2017.
- Charpentier Ljungqvist, F., Seim, A., Krusic, P. J., González-Rouco, J. F., Werner, J. P., Cook, E. R., Zorita, E., Luterbacher, J., Xoplaki, E., Destouni, G., García-Bustamante, E., Melo Aguilar, C. A., Seftigen, K., Wang, J., Gagen, M. H., Esper, J., Solomina, O., Fleitmann, D., and Büntgen, U.: European warm-season temperature and hydroclimate since 850 CE, *Environ. Res. Lett.*, 14, 084015, <https://doi.org/10.1088/1748-9326/ab2c7e>, 2019.
- Cohen, M. J., Creed, I. F., Alexander, L., Basu, N. B., Calhoun, A. J., Craft, C., D'Amico, E., DeKeyser, E., Fowler, L., Golden, H. E., Jawitz, J. W., Kalla, P., Kirkman, L. K., Lane, C. R., Lang, M., Leibowitz, S. G., Lewis, D. B., Marton, J., McLaughlin, D. L., Mushet, D. M., Raanan-Kiperwas, H., Rains, M. C., Smith, L., and Walls, S. C.: Do Geographically Isolated Wetlands Influence Landscape Functions?, *P. Natl. Acad. Sci. USA*, 113, 1978–1986, <https://doi.org/10.1073/pnas.1512650113>, 2016.
- Costanza, R., de Groot, R., Sutton, P., van der Ploeg, S., Anderson, S. J., Kubiszewski, I., Farber, S., and Turner, R. K.: Changes in the global value of ecosystem services, *Global Environ. Change*, 26, 152–158, 2014.
- Creed, I. F., Lane, C. R., Serran, J. N., Alexander, L. C., Basu, N. B., Calhoun, A., Christensen, J., Cohen, M. J., Craft, C., D'Amico, E., DeKeyser, E., Fowler, L., Golden, H., Jawitz, J. W., and Kalla, P.: Enhancing Protection for Vulnerable Waters, *Nat. Geosci.*, 10, 809–815, 2017.
- Davidson, N. C.: How much wetland has the world lost? Long-term and recent trends in global wetland area, *Mar. Freshw. Res.*, 65, 934–941, <https://doi.org/10.1071/MF14173>, 2014.
- Davidson, N. C., Fluet-Chouinard, E., and Finlayson, C. M.: Global extent and distribution of wetlands: Trends and issues, *Mar. Freshw. Res.*, 69, 620–627, <https://doi.org/10.1071/MF17019>, 2018.
- Destouni, G., Jaramillo, F., and Prieto, C.: Hydroclimatic shifts driven by human water use for food and energy production, *Nat. Clim. Change*, 3, 213–217, 2013.
- Ghajarnia, N., Destouni, G., Thorslund, J., Kalantari, Z., Acevedo, J. A. A., Blanco, J. F., Borja, S., Chalov, S., Chalova, A., Chun, K. P., Clerici, N., Desormeaux, A., Garfield, B., Girard, P., Gorelits, O., Hansen, A., Jaramillo, F., Jarsjö, J., Livsey, J., Maneas, G., McCurley, K., Palomino-Ángel, S., Pietron, J., Price, R. M., Rivera Monroy, V. H., Salgado, J., Sannel, A. B. K., Seifollahi-Aghmiuni, S., Sjöberg, Y., Tersky, P., Vigouroux, G., Villanueva, L. L., and Zamora, D.: Wetland Change Information Database (WetCID), *Pangaea*, <https://doi.org/10.1594/PANGAEA.907398>, 2019.
- Golden, H., Creed, I. F., Ali, G., Basu, N. B., Neff, B., Rains, M., McLaughlin, D., Alexander, L., Ameli, A. A., Christensen, J., Even-son, G., Jones, C., Lane, C., and Lang, M.: Integrating Geographically Isolated Wetlands Into Land Management Decisions, *Front. Ecol. Environ.*, 15, 319–327, 2017.
- Harris, I., Jones, P. D., Osborn, T. J., and Lister, D. H.: Updated high-resolution grids of monthly climatic observations – the CRU TS3.10 Dataset, *Int. J. Climatol.*, 34, 623–642, <https://doi.org/10.1002/joc.3711>, 2014.
- Jain, A. K., Meiyappan, P., Song, Y., and House, J. I.: CO<sub>2</sub> emissions from land-use change affected more by nitrogen cycle, than by the choice of land-cover data, *Global Change Biol.*, 19, 2893–2906, <https://doi.org/10.1111/gcb.12207>, 2013.

- Jaramillo, F. and Destouni, G.: Developing water change spectra and distinguishing change drivers worldwide, *Geophys. Res. Lett.*, 41, 8377–8386, <https://doi.org/10.1002/2014GL061848>, 2014.
- Jaramillo, F. and Destouni, G.: Local flow regulation and irrigation raise global human water consumption and footprint, *Science*, 350, 1248–1251, <https://doi.org/10.1126/science.aad1010>, 2015.
- Jaramillo, F., Desormeaux, A., Hedlund, J., et al.: Priorities and Interactions of Sustainable Development Goals (SDGs) with Focus on Wetlands, *Water*, 11, 619, <https://doi.org/10.3390/w11030619>, 2019.
- Khazaei, B., Khatami, S., Alemohammad, S. H., Rashidi, L., Wu, C., Madani, K., Kalantari, Z., Destouni, G., and Aghakouchak, A.: Climatic or regionally induced by humans? Tracing hydro-climatic and land-use changes to better understand the Lake Urmia tragedy, *J. Hydrol.*, 569, 203–217, 2019.
- Maneas, G., Makopoulou, E., Boubouras, D., and Manzoni, S.: Anthropogenic Changes in a Mediterranean Coastal Wetland during the Last Century – The Case of Gialova Lagoon, Messinia, Greece, *Water*, 11, 350, <https://doi.org/10.3390/w11020350>, 2019.
- Meiyappan, P. and Jain, A. K.: Three distinct global estimates of historical land cover change and land use conversions for over 200 years, *Front. Earth Sci.*, 6, 122–139, <https://doi.org/10.1007/s11707-012-0314-2>, 2012.
- Mitchell, J. C., Paton, P. W. C., and Raithel, C. J.: The importance of vernal pools to reptiles, birds, and mammals. *Science and Conservation of Vernal Pools in Mortheastern North America*, edited by: Calhoun, A. J. K. and de Maynadier, P. G., (CRC, Boca Raton, FL), 169–193, 2008.
- Mitsch, W. J. and Gosselink, J. G.: *Wetlands*, New York, Wiley, 2000.
- Morganti, M., Manica, M., Bogliani, G., Gustin, M., Luoni, F., Trotti, P., Perin, V., and Brambilla, M.: Multi-species habitat models highlight the key importance of flooded reedbeds for inland wetland birds: implications for management and conservation, *Avian Res.*, 10, 15, <https://doi.org/10.1186/s40657-019-0154-9>, 2019.
- Orth, R. and Destouni, G.: Drought reduces blue-water fluxes more strongly than greenwater fluxes in Europe, *Nat. Commun.* 9, 3602, <https://doi.org/10.1038/s41467-018-06013-7>, 2018.
- Peel, M. C., Finlayson, B. L., and McMahon, T. A.: Updated world map of the Köppen-Geiger climate classification, *Hydrol. Earth Syst. Sci.*, 11, 1633–1644, <https://doi.org/10.5194/hess-11-1633-2007>, 2007.
- Preston, E. M. and Bedford, B. L.: Evaluating cumulative effects on wetland functions: a conceptual overview and generic framework, *Environ. Manag.*, 12, 565–583, 1988.
- Quin, A. and Destouni, G.: Large-scale comparison of flow-variability dampening by lakes and wetlands in the landscape, *Land Degrad. Dev.*, 29, 3617–3627, <https://doi.org/10.1002/ldr.3101>, 2018.
- Quin, A., Jaramillo, F., and Destouni, G.: Dissecting the ecosystem service of large-scale pollutant retention: The role of wetlands and other landscape features, *AMBIO*, 44, 127–137, 2015.
- Seifollahi-Aghmiuni, S., Kalantari, Z., Land, M., and Destouni, G.: Change Drivers and Impacts in Arctic Wetland Landscapes – Literature Review and Gap Analysis, *Water*, 11, 722, <https://doi.org/10.3390/w11040722>, 2019.
- Seneviratne, S. I., Lüthi, D., Litschi, M., and Schär, C.: Land–atmosphere coupling and climate change in Europe, *Nature*, 443, 205–209, 2006.
- Thorslund, J., Jarsjö, J., Jaramillo, F., Jawitz, J. W., Manzoni, S., Basu, N. B., Chalov, S. R., Cohen, M. J., Creed, I. F., Goldenberg, R., Hylén, A., Kalantari, Z., Koussis, A. D., Lyon, S., Mazi, K., Mård, J., Persson, K., Pietroni, J., Prieto, C., Quin, A., Van Meter, K., and Destouni, G.: Wetlands as large-scale nature-based solutions: status and challenges for research, engineering and management, *Ecol. Eng.*, 108, 489–497, 2017.
- Thorslund, J., Cohen, M. J., Jawitz, J. W., Destouni, G., Creed, I. F., Rains, M. C., Badiou, P., and Jarsjö, J.: Solute evidence for hydrological connectivity of geographically isolated wetlands, *Land Degrad. Develop.*, 29, 3954–3962, 2018.
- Zedler, J. B. and Kercher, S.: Wetland resources: status, trends, ecosystem services, and restorability, *Annu. Rev. Environ. Resour.*, 30, 39–74, 2005.