

A new partnership:
An Institutional Repository and
a Systematic Review Search
Deposit Service

Will Dean

Stephanie Roth

Temple University Ginsburg Health Sciences Library

1

SYSTEMATIC REVIEW SERVICE

Creating transparent & reproducible search strategies
& following best practice guidelines

Temple University Systematic Review Service

<https://guides.temple.edu/systematicreviews>

PRISMA-S

<http://prisma-statement.org/Extensions/Searching>



2

RESEARCH DATA SERVICES AND TUSCHOLARSHARE

Creating a standard data deposit workflow for systematic
review data

Temple University Libraries Research Data Services

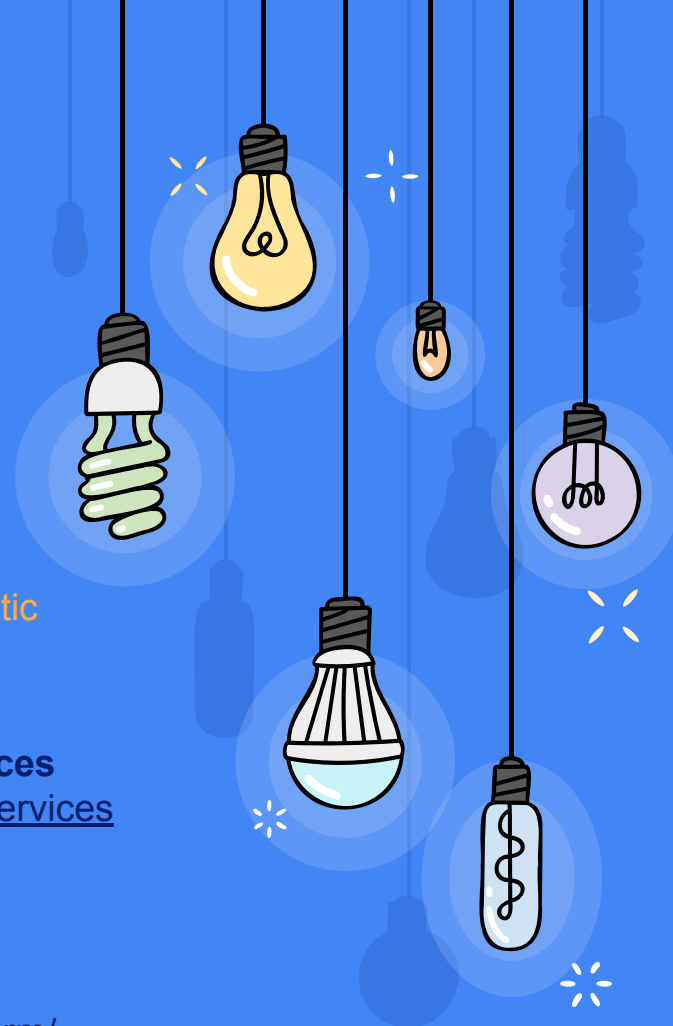
<https://library.temple.edu/categories/research-data-services>

TUScholarShare Deposits

<https://scholarshare.temple.edu/>

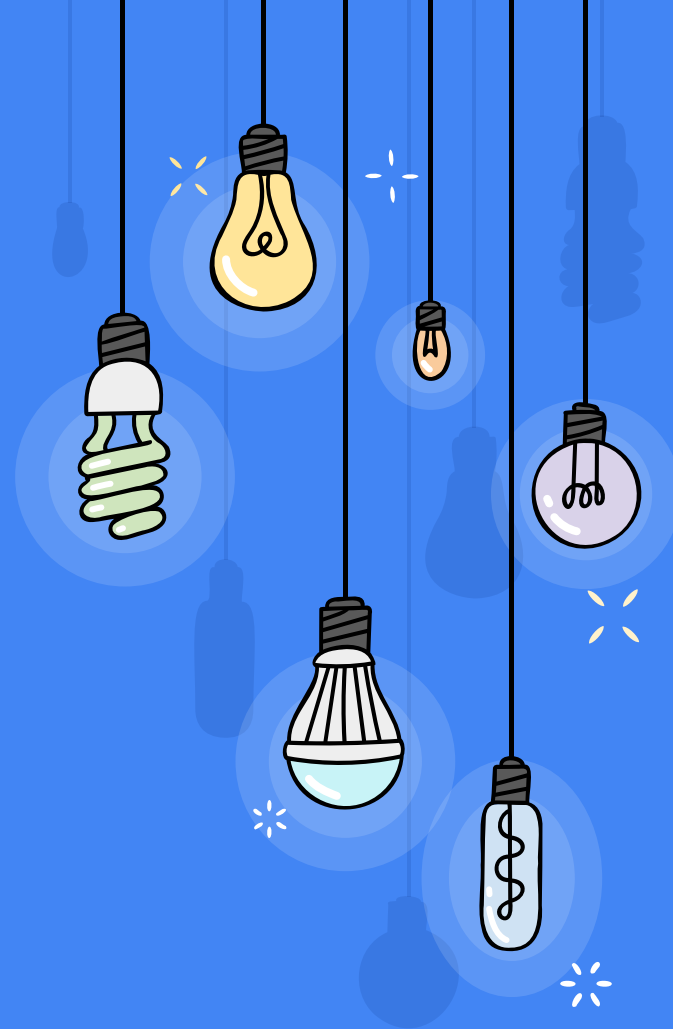
Data Deposit Form

<https://sites.temple.edu/scholarshare/data-deposit-form/>



TIMELINE

- Pre-2020: TUScholarshare planning and setup
- Early 2020: Discuss depositing systematic review data
- Mid 2020: Collect needs and modify data deposit workflow
- Fall 2020: TUScholareShare Launches
- Fall 2020: Test workflow and deposit
- November 2020: Deposit first set of systematic review data
- November 2021: 16 datasets deposited from systematic reviews



IMPORTANT LESSONS

- Creating reusable documents (Readme and deposit checklist) specifically for SR deposits
- Modifying workflow for SR metadata
- Resolving issues with metadata formatting
- Ensuring open formats and documentation
- Improving communication with depositors



Thank you!

Stephanie.Roth@temple.edu
[@StephanieRothSR](https://twitter.com/StephanieRothSR)

Will.Dean@temple.edu