

Medical Resident Resource Use Trends: Looking at the Past to Inform Future Decisions

**Southern Chapter of the Medical Library
Association Annual Meeting**

David Petersen, MSLIS, MA, AHIP

Martha Earl, MSLS, AHIP

Alexandria Q. Wilson, MSIS, AHIP

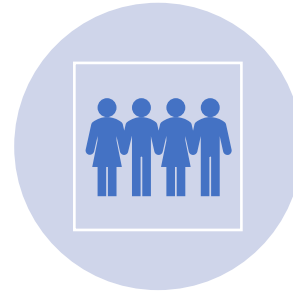
Preston Medical Library

University of Tennessee Graduate School of
Medicine

Background



Preston Medical Library (PML) is located on the campus of the University of Tennessee Medical Center and is part of the University of Tennessee Graduate School of Medicine.



PML has conducted a survey of exiting residents since 2006



Questions focus on use of library resources and resident comments about changes or improvements



In this study, we looked at the past 15 yrs. of data (2006-2020) to examine trends and changes in library resource usage

Methods



Survey created on the Survey Monkey platform
Sent to all exiting residents and fellows



Survey administered by web link or through printed surveys during exit process
Survey is optional although encouraged
Responses on printed surveys are entered in Survey Monkey by library staff.



Survey currently consists of 16 questions asking about library resource usage, satisfaction with library resources, and satisfaction with library staff

Study Question

Which types of articles or sources do you use to find information?

- Respondents can check all options that applied to them; currently, there are 16 resources/types listed, including an “Other” box allowing for free-text response
- Options have changed slightly over the time span due to products being discontinued, merged, or the library ceasing subscription
- All listed resource options can be accessed through PML’s website

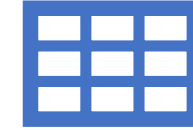
Reviews	RCTs
Practice Guidelines	Case Reports
Cochrane Database	UpToDate
Clinical Key	PubMed
MedScape/WebMD	Print Textbooks
Google or Google Scholar	Colleagues
Librarians	Drug Reps
Access Medicine or Electronic Texts	
Other (please specify)	

Question Choices

Data Analysis



Gathered results to question
from 2006-2020



Imported data into Excel to
analyze responses



Filtered data for each answer
choice



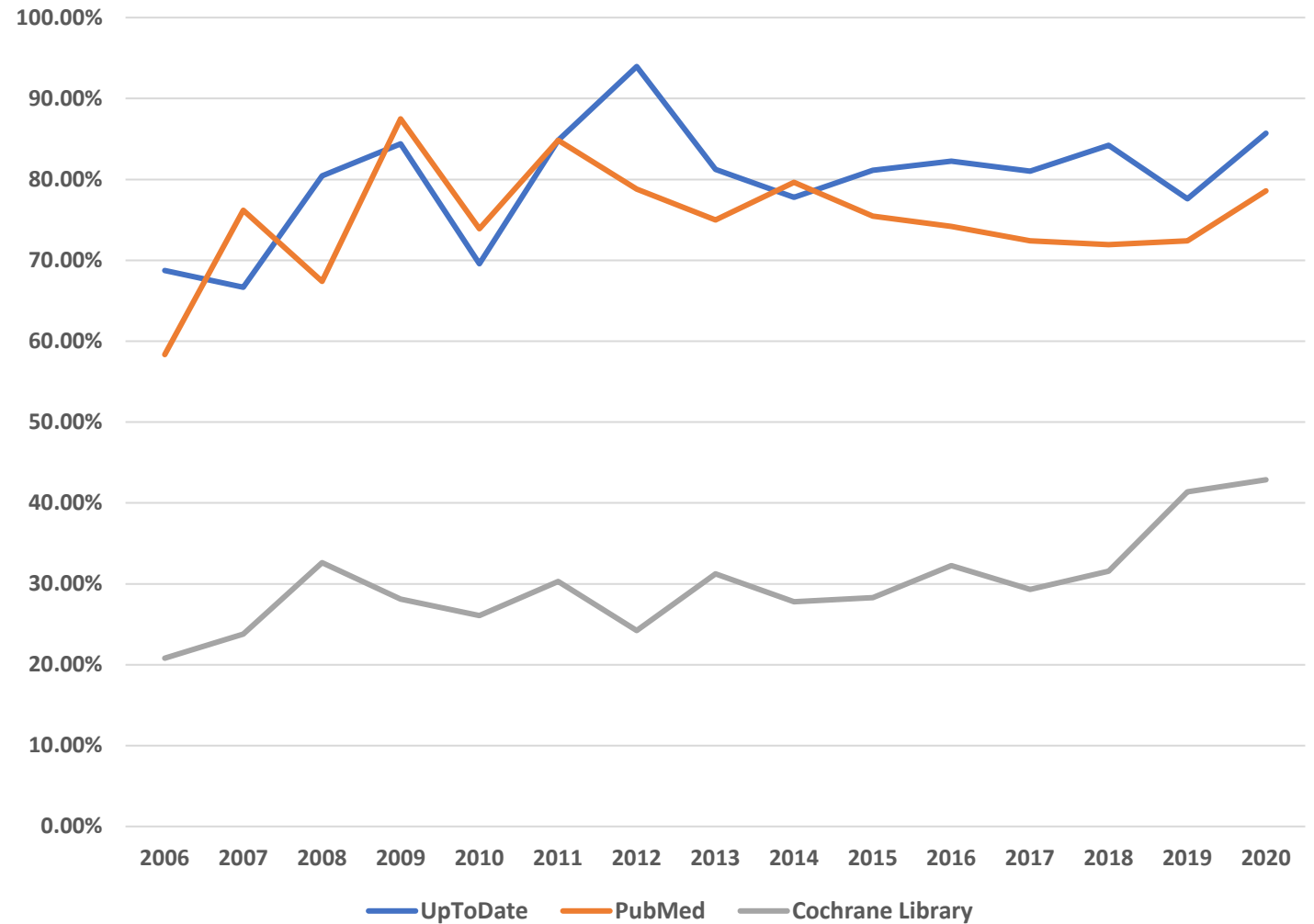
Calculated percentage of each
year's question participants who
selected each answer choice

Results

- Focused on resources that had been present in all survey years
- Number of residents responding to the question varied from 14 to 62, depending on the year
 - Average was 46 respondents
 - The low of 14 respondents happened in 2020 due to the COVID-19 pandemic and the library's changing services/schedule

UpToDate/
PubMed/
Cochrane Library

Percentage of Exiting Residents Indicating Usage of UpToDate,
PubMed, and Cochrane Library



MD Consult / Clinical Key

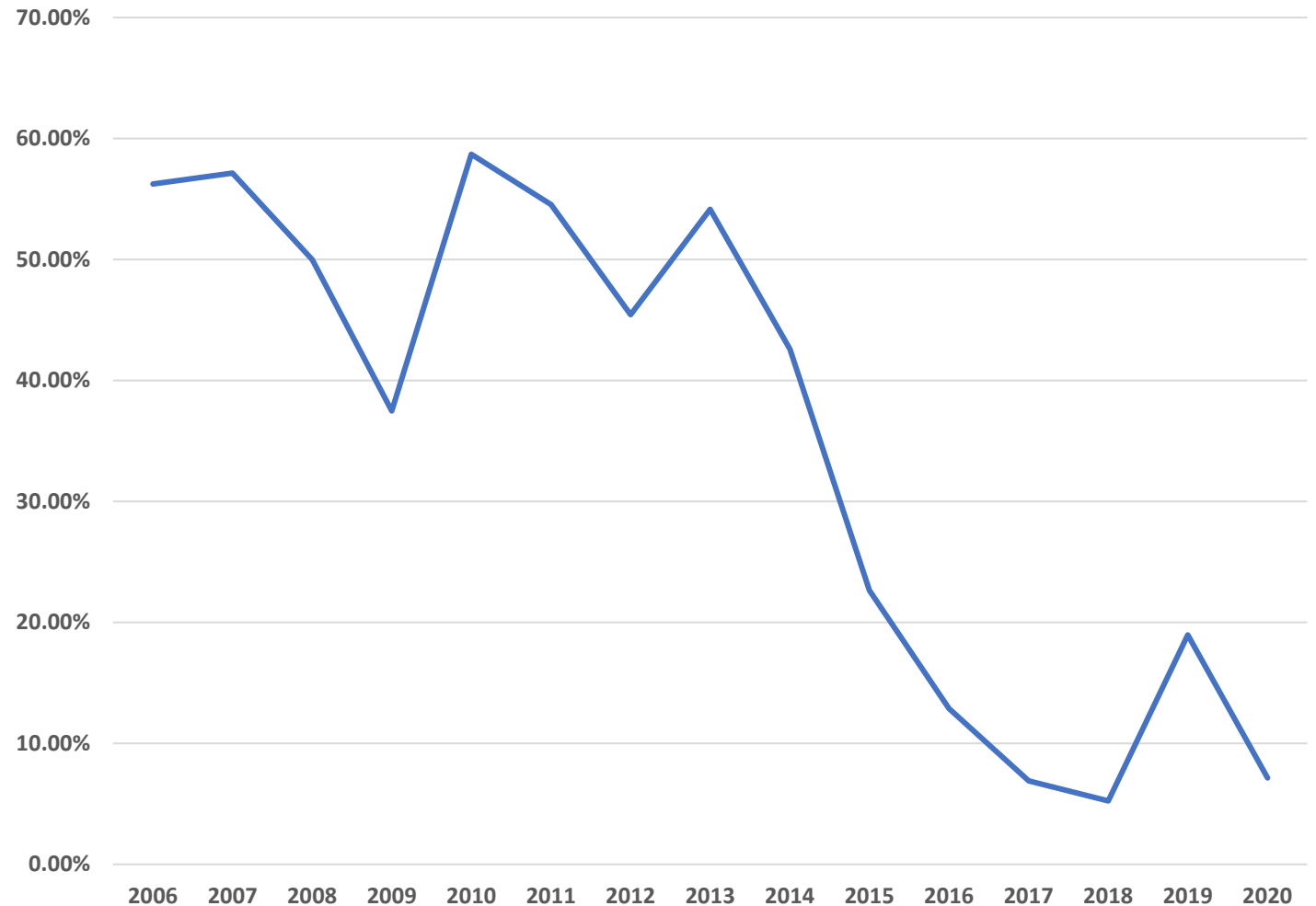
MD Consult: 2006-2013

MD Consult / Clinical Key: 2014-2017

Clinical Key: 2018-present

Authentication changed with advent of
Clinical Key

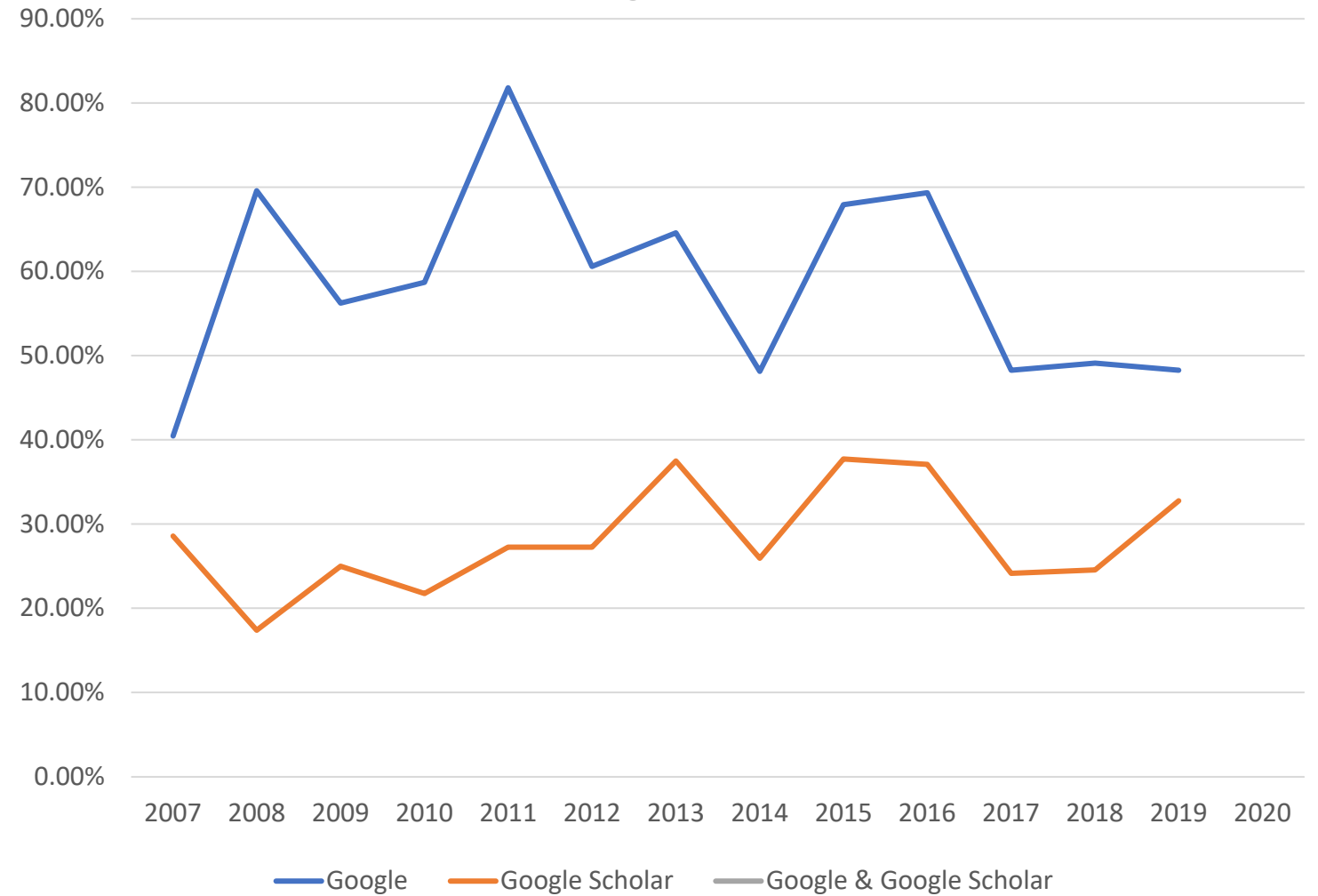
Percent of Exiting Residents Indicating Usage of MD Consult / Clinical Key



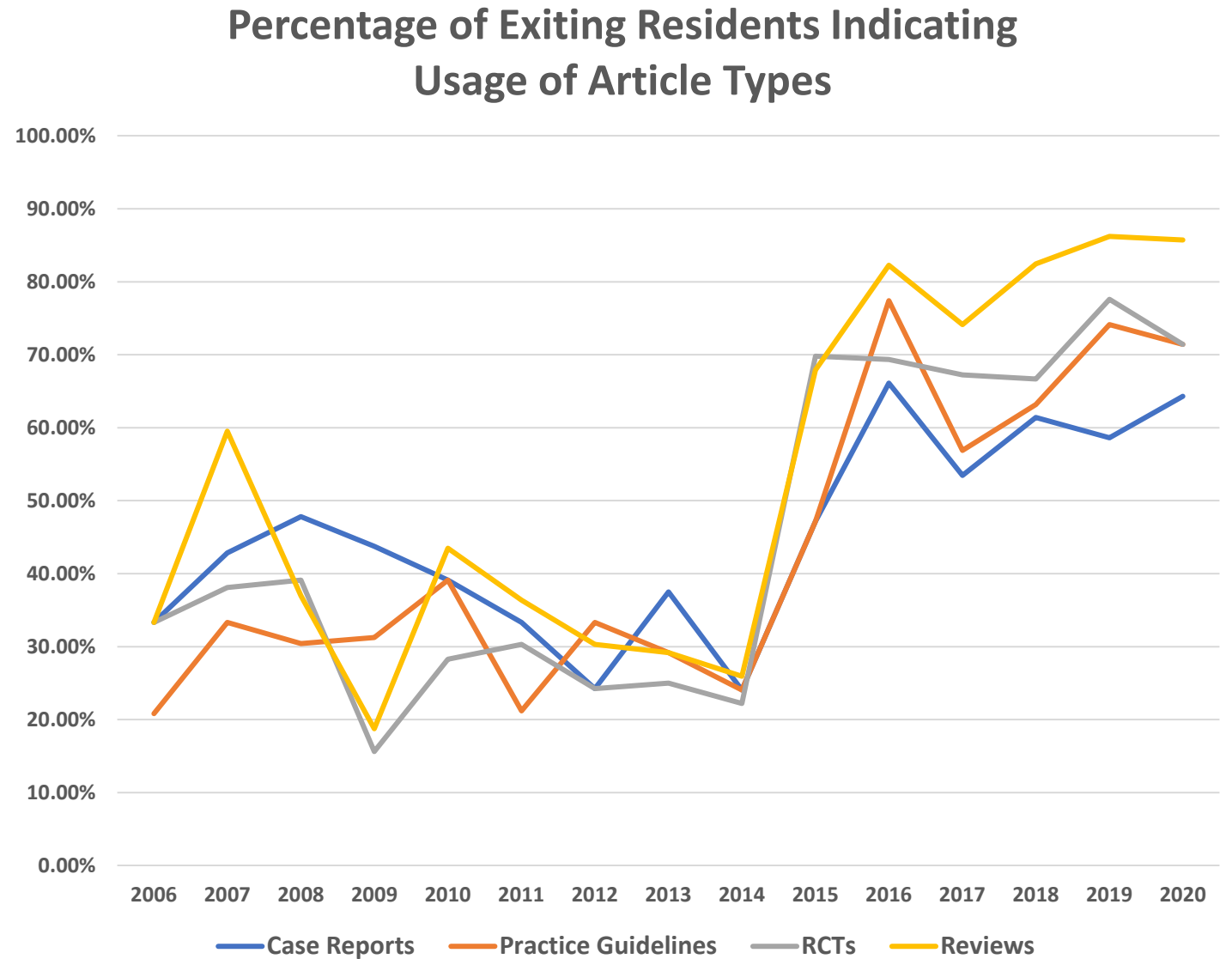
Google / Google Scholar

Google OR Google Scholar (2020): 28.6%

Percent of Exiting Residents Indicating Usage of Google or Google Scholar

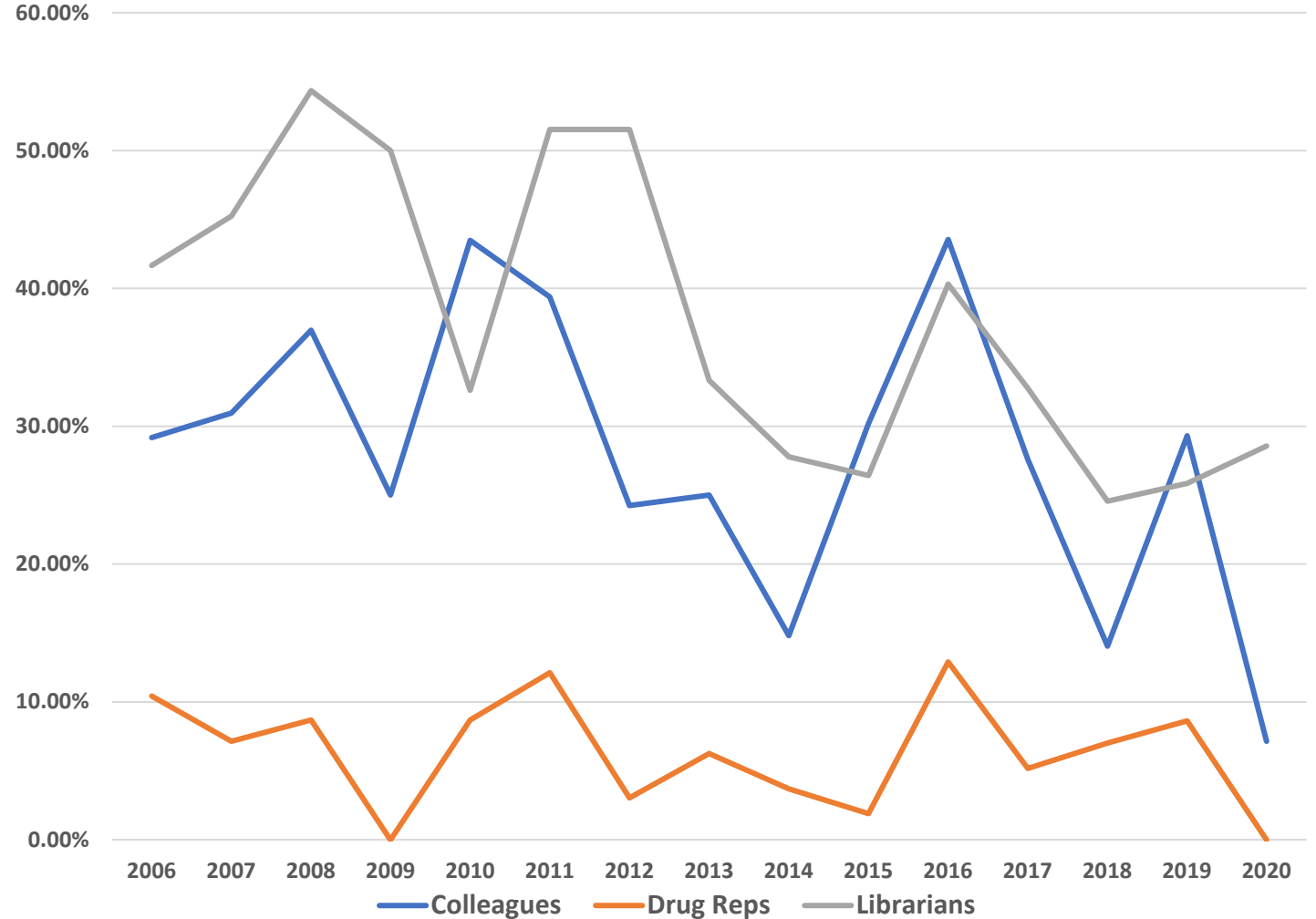


Article Type Usage



Information Resources

Percent of Exiting Residents Indicating Usage of Information Resources



Discussion

- UpToDate and PubMed have been, and remain, our most utilized resources by residents
- While reported use of information sources has decreased, librarians are still utilized
- Full-text finder/search updated in 2018 to a new company offering a far better user interface
- Over the last few years, approximately 50% of residents reported using Google as an info source
 - We expected that to be higher
 - Has there been a change in medical school and graduate medical education regarding Google?

Discussion

- Accessibility
 - All resources can be found in a “Databases A-Z” link
 - Selected resources are hot linked on homepage
 - Facilitates access to a select few resources
- Clinical Key showed a major decline in usage
 - MD Consult was used more than Clinical Key—always 42% or above
 - Possible that without a Clinical Key link from the home page, people access the content through the library’s search interface without noting the provider

Conclusions

- Resident resource use did change
- Library resources, including librarians, continue to be consulted
 - Indicated higher usage than colleagues and drug representatives in recent years
- Tracking indicated resource usage gives us a broad picture of resident preferences and usage
- With an increase in publishing and research, we may consider adding databases like Scopus and Web of Science to the question's options in future surveys

References

1. Laera, E., Gutzman, K., Spencer, A., Beyer, C., Bolore, S., Gallagher, J., Pidgeon, S., & Rodriguez, R. (2021). Why are they not accessing it? User barriers to clinical information access. *Journal of the Medical Library Association*, *109*(1), 126–132.
<https://doi.org/10.5195/jmla.2021.1051>
2. Kostagiolas, P. A., Kourouthanassis, P. E., Martzoukou, K., Korfiatis, N., & Niakas, D. (2018). Information seeking behavioural paths of physicians for diabetes mellitus care: a qualitative comparative analysis of information needs, sources, and barriers. *Health Systems (Basingstoke, England)*, *7*(1), 13–28.
<https://doi.org/10.1080/20476965.2017.1390050>
3. Dunn, K., Marshall, J. G., Wells, A. L., & Backus, J. (2017). Examining the role of MEDLINE as a patient care information resource: an analysis of data from the Value of Libraries study. *Journal of the Medical Library Association*, *105*(4), 336–346.
<https://doi.org/10.5195/jmla.2017.87>
4. Allan, G. M., Ma, V., Aaron, S., Vandermeer, B., Manca, D., & Korownyk, C. (2012). Residents' clinical questions: how are they answered and are the answers helpful?. *Canadian Family Physician*, *58*(6), e344–e351.

Questions?

Contact:

David Petersen, MSLS, MA, AHIP
University of Tennessee Graduate
School of Medicine

dpetersen@utmck.edu