

2-2-1923

## Postcard: Men Throwing Calf to Brand

R. B.

Nora Toale

Follow this and additional works at: [https://scholars.fhsu.edu/tj\\_postcards](https://scholars.fhsu.edu/tj_postcards)

### Content Disclaimer

The primary source materials contained in the Fort Hays State University Special Collections and Archives have been placed there for research purposes, preservation of the historical record, and as reflections of a past belonging to all members of society. Because this material reflects the expressions of an ongoing culture, some items in the collections may be sensitive in nature and may not represent the attitudes, beliefs, or ideas of their creators, persons named in the collections, or the position of Fort Hays State University.

---

### Recommended Citation

B., R. and Toale, Nora, "Postcard: Men Throwing Calf to Brand" (1923). *Tim Johnson Postcard Collection*. 1347.

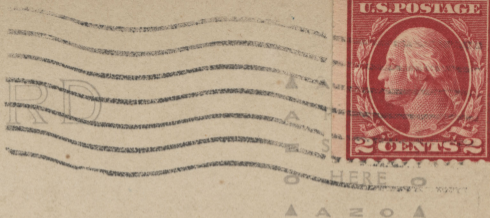
[https://scholars.fhsu.edu/tj\\_postcards/1347](https://scholars.fhsu.edu/tj_postcards/1347)

This Postcard is brought to you for free and open access by the Tim Johnson Collection at FHSU Scholars Repository. It has been accepted for inclusion in Tim Johnson Postcard Collection by an authorized administrator of FHSU Scholars Repository.



#38 THROWING CALF TO BRAND

POSTCARD



Tulsa Okla

CORRESPONDENCE HERE

NAME AND ADDRESS HERE

FEB 14 1923

2/2/23  
Dear Friend Mosee  
I am in Tulsa but  
I will go to  
Wichita Kans in  
a few days I dont  
know when I be at  
home see you later  
R. B.

Miss Nora Toole  
Liberal  
Kans.

5-1/68