



UNIVERSITY OF AMSTERDAM

UvA-DARE (Digital Academic Repository)

Emerging insights on neoadjuvant chemoradiotherapy in pancreatic cancer

Versteijne, E.

Publication date
2021

[Link to publication](#)

Citation for published version (APA):

Versteijne, E. (2021). *Emerging insights on neoadjuvant chemoradiotherapy in pancreatic cancer*.

General rights

It is not permitted to download or to forward/distribute the text or part of it without the consent of the author(s) and/or copyright holder(s), other than for strictly personal, individual use, unless the work is under an open content license (like Creative Commons).

Disclaimer/Complaints regulations

If you believe that digital publication of certain material infringes any of your rights or (privacy) interests, please let the Library know, stating your reasons. In case of a legitimate complaint, the Library will make the material inaccessible and/or remove it from the website. Please Ask the Library: <https://uba.uva.nl/en/contact>, or a letter to: Library of the University of Amsterdam, Secretariat, Singel 425, 1012 WP Amsterdam, The Netherlands. You will be contacted as soon as possible.



META-ANALYSIS COMPARING UPFRONT SURGERY WITH NEOADJUVANT TREATMENT IN PATIENTS WITH RESECTABLE OR BORDERLINE-RESECTABLE PANCREATIC CANCER

Eva Versteijne, Jantien A. Vogel, Marc G. Besselink, Oliver R. C. Busch,
Johanna W. Wilmink, Joost G. Daams, Casper H. J. van Eijck,
Bas Groot Koerkamp, Coen R. N. Rasch, Geertjan van Tienhoven, on
behalf of the Dutch Pancreatic Cancer Group

*A version of this manuscript was published in British Journal of Surgery
Br J Surg. 2018 Jul;105(8):946-958. DOI: 10.1002/bjs.10870*

ABSTRACT

Background

Studies comparing upfront surgery with neoadjuvant treatment in pancreatic cancer may report only patients who underwent resection and so survival will be skewed. The aim of this study was to report survival by intention to treat in a comparison of upfront surgery versus neoadjuvant treatment in resectable or borderline-resectable pancreatic cancer.

Methods

MEDLINE, Embase and the Cochrane Library were searched for studies reporting median overall survival by intention to treat in patients with resectable or borderline-resectable pancreatic cancer treated with or without neoadjuvant treatment. Secondary outcomes included overall and R0 resection rate, pathological lymph node rate, reasons for unresectability and toxicity of neoadjuvant treatment.

Results

In total, 38 studies were included with 3484 patients, of whom 1738 (49.9%) had neoadjuvant treatment. The weighted median overall survival by intention to treat was 18.8 months for neoadjuvant treatment and 14.8 months for upfront surgery; the difference was larger among patients whose tumours were resected (26.1 versus 15.0 months respectively). The overall resection rate was lower with neoadjuvant treatment than with upfront surgery (66.0 versus 81.3%; $P < 0.001$), but the R0 rate was higher (86.8 (95% CI, 84.6 to 88.7) versus 66.9% (64.2 to 69.6); $P < 0.001$). Reported by intention to treat, the R0 rates were 58.0 and 54.9% respectively ($P = 0.088$). The pathological lymph node rate was 43.8% after neoadjuvant therapy and 64.8% in the upfront surgery group ($P < 0.001$). Toxicity of at least grade III was reported in up to 64% of the patients.

Conclusion

Neoadjuvant treatment appears to improve overall survival by intention to treat, despite lower overall resection rates for resectable or borderline-resectable pancreatic cancer.

PROSPERO registration number: CRD42016049374.

INTRODUCTION

Pancreatic cancer is recognized as having an overall poor prognosis and low resection rate. Long-term survival remains limited even after tumour resection. Surgical resection with adjuvant chemotherapy is the current standard of care.¹ Recent trials have reported improved median overall survival to 24.5–28 months with adjuvant treatment.^{1,2} However, these trials did not report how many eligible patients were fit enough to be randomized to receive adjuvant chemotherapy. Currently, the strongest predictors of survival include surgery with curative intent, early-stage disease and complete (R0) resection.^{3,4} None of these predictors are influenced by adjuvant treatment.

In patients with resectable pancreatic cancer, a recent study of Surveillance, Epidemiology, and End Results (SEER) data from nearly 4000 patients suggested a survival benefit with neoadjuvant radiotherapy with or without chemotherapy over upfront surgery with or without adjuvant treatment.⁵ However, randomized controlled trials (RCTs) of neoadjuvant treatment compared with upfront surgery are lacking. Non-randomized studies evaluating neoadjuvant treatment of patients with either borderline-resectable or upfront resectable pancreatic cancer often suffer from selection bias because they report survival data only for patients who eventually underwent pancreatic resection. Patients with disease progression or severe toxicity who did not undergo resection are often excluded. Moreover, patients found to have metastatic or unresectable disease at exploratory surgery are also excluded.^{5,6}

The aim of this study was to perform a systematic review of studies comparing median overall survival of patients who underwent upfront surgery versus those who underwent neoadjuvant treatment in intention-to-treat analyses.

METHODS

The systematic review was performed according to the PRISMA guidelines.⁷ The review was registered at PROSPERO (registration number: CRD42016049374).

Search strategy

The literature was reviewed systematically by searching in MEDLINE, Embase and the Cochrane Library for studies published between 1 January 2000 and 6 December 2016. The search strategy included the following domains of Medical Subject Heading (MeSH) terms: ‘pancreatic neoplasm’, ‘survival’, ‘mortality’ and ‘survival analysis’; these were combined with ‘AND’ or ‘OR’. No language restrictions were used. For the MEDLINE and Embase searches, a McMaster specific prognosis filter was applied, completed with the authors’ own terminology to cover the survival concept of the search strategy. A full description of the search is available in the Supplementary Data.

Eligibility

Studies including patients with resectable or borderline-resectable pancreatic cancer, either treated by upfront surgery or with neoadjuvant treatment, and reporting median overall survival by intention to treat (based on the initial treatment assignment and not on the treatment eventually

received) were included. No selection was made based on adjuvant treatment. Excluded were review articles, notes, letters, case reports (5 or fewer patients), animal studies, studies that did not report median overall survival by intention to treat, and studies that reported on only specific groups of patients (for example, those with renal impairment, older than 70 years, or with poor performance status). Studies that did not report median overall survival separately for resectable and borderline-resectable pancreatic tumours were also excluded.

Study selection

Two authors screened the titles and abstracts independently for eligibility. After the first two rounds of screening, full-text screening was carried out. Disagreements were resolved by discussion and consensus achieved. Primary and secondary outcomes were extracted from the full text. If studies had an overlapping cohort, the most recent study was included.

Methodological quality

All studies were assessed for risk of bias using a standard list of 11 potential risks of bias, based on the Oxford Centre for Evidence-Based Medicine (CEBM) Critical Appraisal Skills Programme checklists for RCTs and observational cohort studies, and the Cochrane Collaboration's tool for assessing risk of bias.⁸⁻¹¹ All studies were graded according to the Oxford CEBM levels of evidence.¹²

Outcome measures

The primary outcome, median overall survival, was extracted from the included articles. Data on numbers of patients with resectable or borderline-resectable pancreatic cancer, resectability criteria (for example, those of the National Comprehensive Cancer Network (NCCN) and American Hepato-Pancreato-Biliary Association (AHPBA)), and types of neoadjuvant treatment and adjuvant treatment were obtained. Secondary outcomes were: resection rate, completeness of resection (R0 resection rate, only for patients undergoing resection), pathological lymph node rate, reasons for unresectability, and toxicity of at least grade III after neoadjuvant treatment.

Statistical analyses

The weighted median overall survival was calculated for the studies reporting this information for groups with and without neoadjuvant treatment. The weighted estimate of median survival (m_p) of both groups was derived by the formula used by Gillen and colleagues in a previous systematic review:

$$m_p = \left(\sum_{i=1}^k \frac{w_i}{m_i} \right)^{-1}$$

where mi denotes the median survival in a study population i (with i ranging from 1 to k , where k is the number of included studies) and wi refers to a study-specific weight function.¹³ The number of study participants (divided by the total number of evaluable patients) was used as the weight.

The overall resection rate and the R0 rate for both groups were also calculated. The R0 rate was calculated for all patients and also for those who actually underwent resection of the pancreatic cancer. For both the overall resection rate and the R0 rate, the 95% confidence interval was calculated using a proportion calculator.¹⁴ The significance of differences in proportions was assessed by means of two-tailed Fisher’s exact test, with a significance level =0.050, using SPSS® version 22.0.0.2 (IBM, Armonk, New York, USA).

RESULTS

A total of 18,828 records were identified, of which 122 screened were fully. Finally, 38 studies were included, with 3484 patients (Figure 1).¹⁵⁻⁵²

Study characteristics are summarized in Tables 1 and 2. Three RCTs, nine phase I or II trials, 12 prospective cohort studies and 14 retrospective cohort studies were included. The range of median

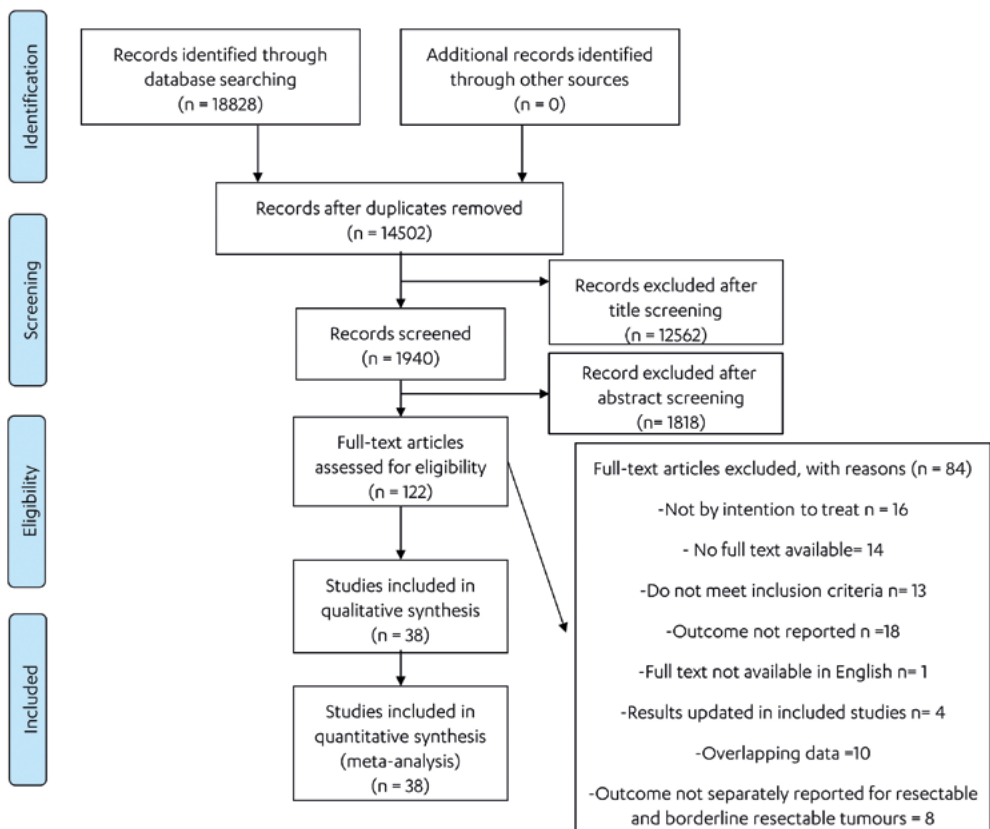


Figure 1. PRISMA flow chart showing selection of articles for review

age was 61.9–69.0 years in the upfront surgery group and 59–73 years in the neoadjuvant group (Tables 3 and 4). Overall, neoadjuvant treatment was administered to 1723 of 1738 patients (99.1%). All studies used at least chemotherapy as neoadjuvant treatment, usually including gemcitabine (26 of 35 studies). Radiotherapy was given as part of the neoadjuvant treatment in 29 of 35 studies. No study used radiotherapy as the sole neoadjuvant treatment. The radiation dose ranged from 30 to 54 Gy. Adjuvant therapy was initiated in ten of 12 upfront surgery studies, and 68.6% of patients who underwent resection started adjuvant treatment. In the neoadjuvant treatment group, adjuvant therapy was initiated in 18 of 35 studies, and 31% of patients who had resection of the pancreatic tumour started adjuvant therapy. Fewer studies reported the numbers of patients who completed adjuvant therapy (Tables 1 and 2).

Methodological quality

Results of the methodological quality assessment of all studies are reported in Tables S1–S3 (Supplementary Data). Most studies were retrospective (14) or prospective (12) cohort studies. The studies showed heterogeneity in treatment and potential bias in collecting data. A common risk of bias was the heterogeneity of neoadjuvant and adjuvant treatments within and between the studies. Furthermore, there was wide variation in the duration of follow-up; in eight studies the follow-up was shorter than 12 months. In addition, different criteria were used for resectability,

Table 1. Characteristics of 12 included studies that reported median overall survival after upfront surgery

Reference	No. of patients	Country	Study design	Tumour	RO criteria (mm)*	Adjuvant treatment initiated (%)†	Adjuvant treatment completed (%)
Casadei <i>et al.</i> ¹⁵	20	Italy	RCT	R	> 1	22	n.r.
Golcher <i>et al.</i> ¹⁶	33	Germany	RCT	R	n.s.	44	n.r.
Bao <i>et al.</i> ¹⁷	78	USA	Prospective	R	n.s.	78	n.r.
Raptis <i>et al.</i> ¹⁸	102	UK	Prospective	R	n.r.	n.r.	n.r.
Tzeng <i>et al.</i> ¹⁹	52	USA	Prospective	R	n.s.	n.r.	60
Fujii <i>et al.</i> ²⁰	71	Japan	Prospective	BR	> 1	100	42
Fujii <i>et al.</i> ²¹	233	Japan	Prospective	R	> 1	69	45.6
Barbier <i>et al.</i> ²²	85	France	Retrospective	R	> 1	58	n.r.
Papalezova <i>et al.</i> ²³	92	USA	Retrospective	R	n.s.	Adjuvant CRT: 66	n.r.
Kato <i>et al.</i> ²⁴	624	Japan	Retrospective	BR	n.s.	78.7	n.r.
						Adjuvant CT only: 69.9	
Hirono <i>et al.</i> ²⁵	331	Japan	Retrospective	R + BR	0	BR-A: 84.5	76
Murakami <i>et al.</i> ²⁶	25	Japan	Retrospective	BR	n.s.	48	n.r.

*Definition of RO: > 1, more than 1 mm clearance from each margin; 0, no cancer cells along any margin. †Among patients who underwent resection of pancreatic cancer. R, resectable; n.r., not reported; n.s., not specified; prospective, prospective cohort study; BR, borderline resectable; retrospective, retrospective cohort study; CRT, chemoradiotherapy; CT, chemotherapy; BR-A, borderline resectable with arterial involvement.

Table 2. Characteristics of the 35 included studies that report median overall survival after neoadjuvant treatment

Reference	No. of patients	Country	Study design	Tumour	R0 criteria (mm)*	Neoadjuvant treatment	Adjuvant treatment initiated (%)†	Adjuvant treatment completed (%)
Palmer <i>et al.</i> ²⁷	50	UK	RCT	R	n.s.	CT	n.r.	n.r.
Casadei <i>et al.</i> ¹⁵	18	Italy	RCT	R	>1	CRT	75	n.r.
Golcher <i>et al.</i> ¹⁶	33	Germany	RCT	R	n.s.	CRT	37	n.r.
Evans <i>et al.</i> ²⁸	86	USA	Phase II	R	0	CRT	n.r.	n.r.
Heinrich <i>et al.</i> ²⁹	28	Switzerland	Phase II	R	n.s.	CT	n.r.	n.r.
Le Scodan <i>et al.</i> ³⁰	41	France	Phase II	R	n.s.	CRT	n.r.	n.r.
Turrini <i>et al.</i> ³¹	34	France	Phase I	R	0	CRT	n.r.	n.r.
Small <i>et al.</i> ³²	17	USA	Phase II	R + BR	n.s.	CRT	n.r.	n.r.
Esnola <i>et al.</i> ³³	13	USA	Phase II	BR	n.s.	Mixed	n.r.	n.r.
Kim <i>et al.</i> ³⁴	62	USA	Phase II	R + BR	n.s.	CRT	63	92
O'Reilly <i>et al.</i> ³⁵	38	USA	Phase II	R	n.s.	CT	96	89
Shaib <i>et al.</i> ³⁶	13	USA	Phase I	BR	n.s.	CRT	n.r.	n.r.
Calvo <i>et al.</i> ³⁷	15	Spain	Prospective	R	n.s.	CRT	n.r.	n.r.
Ohgashi <i>et al.</i> ³⁸	38	Korea	Prospective	BR	n.s.	CRT	100	100
Katz <i>et al.</i> ³⁹	22	USA	Prospective	BR	0	CRT	67	90
Oh <i>et al.</i> ⁴⁰	38	Korea	Prospective	BR	n.s.	CRT	61	n.r.
Tzeng <i>et al.</i> ⁴¹	141	USA	Prospective	BR	n.s.	CRT	n.r.	n.r.
Tzeng <i>et al.</i> ¹⁹	115	USA	Prospective	R	n.s.	CRT	7.8	n.r.
Fujii <i>et al.</i> ²⁰	21	Japan	Prospective	BR	>1	CRT	100	56
Fujii <i>et al.</i> ²¹	40	Japan	Prospective	R	>1	CRT	83	56
Ielpo <i>et al.</i> ⁴²	11	Spain	Prospective	BR	n.s.	CT	100	n.r.
Masui <i>et al.</i> ⁴³	18	Japan	Prospective	BR	>1	CT	93	n.r.
Takai <i>et al.</i> ⁴⁴	32	Japan	Retrospective	R	n.s.	CRT	n.r.	n.r.
Barbier <i>et al.</i> ²²	88	France	Retrospective	R	>1	CRT	n.r.	n.r.
Patel <i>et al.</i> ⁴⁵	18	USA	Retrospective	BR	0	CRT	n.r.	n.r.
Papalezova <i>et al.</i> ²³	144	USA	Retrospective	R	n.s.	CRT	32.9	n.r.
Chuong <i>et al.</i> ⁴⁶	57	USA	Retrospective	BR	0	CRT	84	n.r.

Table 2. (continued)

Reference	No. of patients	Country	Study design	Tumour	R0 criteria (mm)*	Neoadjuvant treatment	Adjuvant treatment initiated (%)†	Adjuvant treatment completed (%)
Dholakia <i>et al.</i> ⁴⁷	50	USA	Retrospective	BR	0	CRT	42	n.r.
Boone <i>et al.</i> ⁴⁸	61	USA	Retrospective	R + BR	n.s.	Mixed	n.r.	n.r.
Rose <i>et al.</i> ⁴⁹	64	USA	Retrospective	BR	> 1	CT/CRT	90	n.r.
Moningi <i>et al.</i> ⁵⁰	14	USA	Retrospective	BR	n.s.	CRT	n.r.	n.r.
Sho <i>et al.</i> ⁵¹	99	Japan	Retrospective	R + BR	n.s.	CT/CRT	n.r.	R: 75 BR-V: 49
Rashid <i>et al.</i> ⁵²	121	USA	Retrospective	BR	0	CRT	n.r.	BR-A: 31
Hirono <i>et al.</i> ²⁵	46	Japan	Retrospective	BR	0	Mixed	85	n.r.
Murakami <i>et al.</i> ²⁶	52	Japan	Retrospective	BR	n.s.	CT	79	61 n.r.

*Definition of R0: > 1, more than 1 mm clearance from each margin; 0, no cancer cells along any margin. †Among patients who underwent resection of pancreatic cancer. R, resectable; n.s., not specified; CT, chemotherapy; CRT, chemoradiotherapy; BR, borderline resectable; prospective, prospective cohort study; retrospective, retrospective cohort study; n.r., not reported; BR-V, borderline resectable with venous involvement; BR-A, borderline resectable with arterial involvement.

although most studies used the NCCN guidelines. Three RCTs were included, one²⁷ of which randomized between neoadjuvant gemcitabine or gemcitabine combined with capecitabine in patients with resectable pancreatic cancer. The other two trials randomized between neoadjuvant chemoradiotherapy and upfront surgery, but both were terminated early owing to poor accrual.^{15,16}

Primary outcome

The weighted median overall survival by intention to treat was 18.8 months in the neoadjuvant group and 14.8 months in the upfront surgery group.

Upfront surgery

Twelve studies reported the median overall survival of 1746 patients undergoing upfront surgery for resectable or borderline-resectable pancreatic cancer by intention to treat (Table 3; Figs 2 and 3).¹⁵⁻²⁶ Overall, 81.3% of 1746 patients underwent resection, with an overall weighted median overall survival of 14.8 (range 11.6–25.3) months.

The weighted median overall survival of 819 patients with resectable pancreatic cancer was 17.7 (12–25.3),^{15-19,21-23,25} compared with 12.8 (11.6–16.3) months for 927 patients with borderline-resectable pancreatic cancer (Figs 2 and 3).^{20,24-26} In the largest (retrospective) study of Kato and colleagues, 63 of 624 patients (10.1%) with borderline-resectable pancreatic cancer also received neoadjuvant treatment and the median overall survival of these patients was not available separately.²⁴ The outcome of the subgroup of patients who actually underwent resection was reported in seven of 12 studies; the weighted median overall survival was 15.0 months for these 1048 patients (not by intention to treat).^{16,18,22-26}

Neoadjuvant treatment

Thirty-five studies reported median overall survival after neoadjuvant treatment of 1738 patients with resectable or borderline-resectable pancreatic cancer (Table 4).^{15,16,19-23,25-31 32-52} The neoadjuvant regimens used are shown in Table 2. The weighted median overall survival was 18.8 (range 9.4–50.2) months after neoadjuvant treatment.

For the 18 studies that reported the median overall survival of 857 patients with resectable pancreatic cancer, the weighted median overall survival was 18.2 (10–50.2) months (Fig. 2).^{15,16,19,21-23,27-32,34,35,37,44,48,51} In the 21 studies reporting the median overall survival after neoadjuvant treatment in 881 patients with borderline-resectable cancer, the weighted median overall survival was 19.2 (11–32) months (Fig. 3).^{20,25,26,32-34,36,38-43,45-52}

The outcome for the subgroup of patients who actually underwent resection was reported in 19 studies, and the weighted median overall survival was 26.1 months for these 764 patients (not by intention to treat).^{16,19,22,23,25-31,34,37,40,41,44,46,47,52}

Neoadjuvant chemotherapy versus chemoradiotherapy

Of all studies including patients who received neoadjuvant treatment, six used chemotherapy alone, 24 used chemoradiotherapy, and five used neoadjuvant chemotherapy in some patients and chemoradiotherapy in others. The weighted median overall survival was 20.9 (range 13.6–27.2)

Table 3. Median overall survival, resection rate and R0 rate after upfront surgery reported in 12 studies

Reference	No. of patients	Median age (years)	Median OS (months)	Resection rate, ITT (%)	R0 rate* (%)	Patients with positive lymph nodes (%)*
Casadei <i>et al.</i> ¹⁵	20	67.5	19.5	75	33	87
Golcher <i>et al.</i> ¹⁶	33	65.1	14.4	70	70	57
Bao <i>et al.</i> ¹⁷	78	68 [†]	17.9	77	75	58
Raptis <i>et al.</i> ¹⁸	102	64 [†]	12	32.7	n.r.	n.r.
Tzeng <i>et al.</i> ¹⁹	52	61.9	25.3	92	81	81
Fujii <i>et al.</i> ²⁰	71	63	13.1	70	40	92
Fujii <i>et al.</i> ²¹	233	67	23.5	87.6	70.1	71
Barbier <i>et al.</i> ²²	85	64	17	79	67	64
Papalezova <i>et al.</i> ²³	92	65 [†]	13	74	79	62
Kato <i>et al.</i> ²⁴ <i>kato</i>	624	63.8	12.6	86.4	65.9	57
Hirono <i>et al.</i> ²⁵	331	R: n.r. BR-V: n.r. BR-A: 69§	R: 20.9 BR-V: 16.3 BR-A: 12.4	R: 89.5 BR-V: 92 BR-A: 83.1	R: n.r. BR-V: n.r. BR-A: 62.1	R: n.r. BR-V: n.r. BR-A: 74.8
Murakami <i>et al.</i> ²⁶	25	67§	11.6	92	17	78
Total	1746	Range 61.9–69	14.8	81.3 (79.4, 83.1)	66.9 (64.2, 69.6)	64.8 (62.0, 67.5)

Values in parentheses are 95% confidence intervals. *Among patients who underwent resection of pancreatic cancer. †Mean age. ‡Including patients with unresectable pancreatic tumours, who were not reported separately. §Including patients who received neoadjuvant treatment. OS, overall survival; ITT, intention to treat; R, resectable; n.r., not reported; BR-V, borderline resectable with venous involvement; BR-A, borderline resectable with arterial involvement.

months for patients who received chemotherapy alone^{26,27,29,35,42,43} and 17.8 (range 9.4–32) months for chemoradiotherapy alone.^{15,16,19-23,28,30-32,34,36-41,44-47,50,52} Because of the heterogeneity between radiation dose and chemotherapy schedules, subset analyses should be interpreted with caution.

Secondary outcomes

Resection rate and R0 rate

The overall resection rate was lower in patients who had neoadjuvant treatment than in those who had upfront surgery (66.0 versus 81.3%; $P < 0.001$).

After upfront surgery, the resection rate in all 1746 patients was 81.3% (95%CI 79.4 to 81.3) (range 32.7–92). For patients with resectable pancreatic cancer, the resection rate was 76.8% (95%CI 73.8 to 79.7), compared with 85.3% (82.9 to 87.5) for those with borderline-resectable pancreatic cancer ($P < 0.001$).

For patients who received neoadjuvant treatment, the resection rate was reported in 35 studies and was 66.0% (95% CI 63.7 to 68.2) (range 29–100).^{15,16,20-23,25-31,32-52} For patients with resectable pancreatic cancer, the resection rate was 67.0% (95% CI 63.7 to 70.1), compared with 65.0% (61.8 to 68.2) for those with borderline resectable pancreatic cancer ($P = 0.418$). The resection rate for patients in the neoadjuvant group who underwent an exploratory laparotomy was 91.2%.

The R0 resection rate (only for patients who underwent resection) was higher in patients who had neoadjuvant treatment (86.8 versus 66.9%; $P < 0.001$). The R0 resection rate was also higher

Table 4. Median overall survival, resection rate and R0 rate after neoadjuvant treatment reported in 35 studies

Reference	No. of patients	Median age (years)	Median OS (months)	Resection rate ITT (%)	R0 rate (%)*	Patients with positive lymph nodes (%)*
Palmer <i>et al.</i> ²⁷	50	66	13.6	54	74	56
Casadei <i>et al.</i> ¹⁵	18	71.5	22.4	61	64	55
Golcher <i>et al.</i> ¹⁶	33	62.5	17.4	58	90	32
Evans <i>et al.</i> ²⁸	86	65.8	22.7	74	89	38
Heinrich <i>et al.</i> ²⁹	28	59	26.5	89	80	64
Le Scodan <i>et al.</i> ³⁰	41	59.3	9.4	63	81	50
Turrini <i>et al.</i> ³¹	34	61.5*	15.5	50	100	24
Small <i>et al.</i> ³²	17	62*	R: 10.2 BR: 11.2	R: 43 BR: 30	n.r.	0
Esnaola <i>et al.</i> ³³	13	60	24.1	69	92	n.r.
Kim <i>et al.</i> ³⁴	62	64*	R: 26.5 BR: 18.4	R: 57 BR: 72	85	44
O'Reilly <i>et al.</i> ³⁵	38	73	27.2	71	74	67
Shaib <i>et al.</i> ³⁶	13	64	11	62	n.r.	13
Calvo <i>et al.</i> ³⁷	15	61	10	60	78	n.r.
Ohigashi <i>et al.</i> ³⁸	38	66	32	82	97	10
Katz <i>et al.</i> ³⁹	22	64	21.7	68	93	33
Oh <i>et al.</i> ⁴⁰	38	59	21.2	61	78	4
Tzeng <i>et al.</i> ⁴¹	141	63	19.1	59.6	91.7	48.8
Tzeng <i>et al.</i> ¹⁹	115	65.5	28	82.6	89.5	51.5
Fujii <i>et al.</i> ²⁰	21	66	29.1	86	100	17
Fujii <i>et al.</i> ²¹	40	65	24.9	90	86	39
Ielpo <i>et al.</i> ⁴²	11	61.8*	20	73	100	n.r.
Masui <i>et al.</i> ⁴³	18	63	21.7	83	87	33
Takai <i>et al.</i> ⁴⁴	32	61.8	19.2	75	n.r.	n.r.
Barbier <i>et al.</i> ²²	88	65	15	43	92	29
Patel <i>et al.</i> ⁴⁵	18	67	15.6	50	89	n.r.
Papalezova <i>et al.</i> ²³	144	64	15	53	78	25
Chuong <i>et al.</i> ⁴⁶	57	64*	16.4	56	97	34
Dholakia <i>et al.</i> ⁴⁷	50	63.5	17.2	58	93	28
Boone <i>et al.</i> ⁴⁸	61	64*	R: 20 BR: 22	R: 95 BR: 83	R: 86 BR: 70	n.r.
Rose <i>et al.</i> ⁴⁹	64	66	23.6	48	87	58
Moningi <i>et al.</i> ⁵⁰	14	67.2*	14.4	29	100	n.r.
Sho <i>et al.</i> ⁵¹	99	R: 66.4* BR-V: 66.3* BR-A: 66.0*	R: 50.2 BR-V: 26.6 BR-A: 18	R: 100 BR-V: 97 BR-A: 84	R: 98 BR-V: 97 BR-A: 81	n.r.
Rashid <i>et al.</i> ⁵²	121	67	17	45.5	98.4	63.6
Hirono <i>et al.</i> ²⁵	46	69§	18	87	80	78

Table 4. (continued)

Reference	No. of patients	Median age (years)	Median OS (months)	Resection rate ITT (%)	R0 rate (%)*	Patients with positive lymph nodes (%)*
Murakami <i>et al.</i> ²⁶	52	67§	27.1	90	72	72
Total	1738	Range 59–73	18.8 months	66.0 (63.7, 68.2)	86.8 (84.6, 88.7)	43.8 (40.6, 47.1)

Values in parentheses are 95% confidence intervals. *Among patients who underwent resection of pancreatic cancer. †Mean age. ‡Including patients with unresectable pancreatic tumours, who were not reported separately. §Including patients who received upfront surgery. OS, overall survival; ITT, intention to treat; R, resectable; BR, borderline resectable; n.r., not reported; BR-V, borderline resectable with venous involvement; BR-A, borderline resectable with arterial involvement.

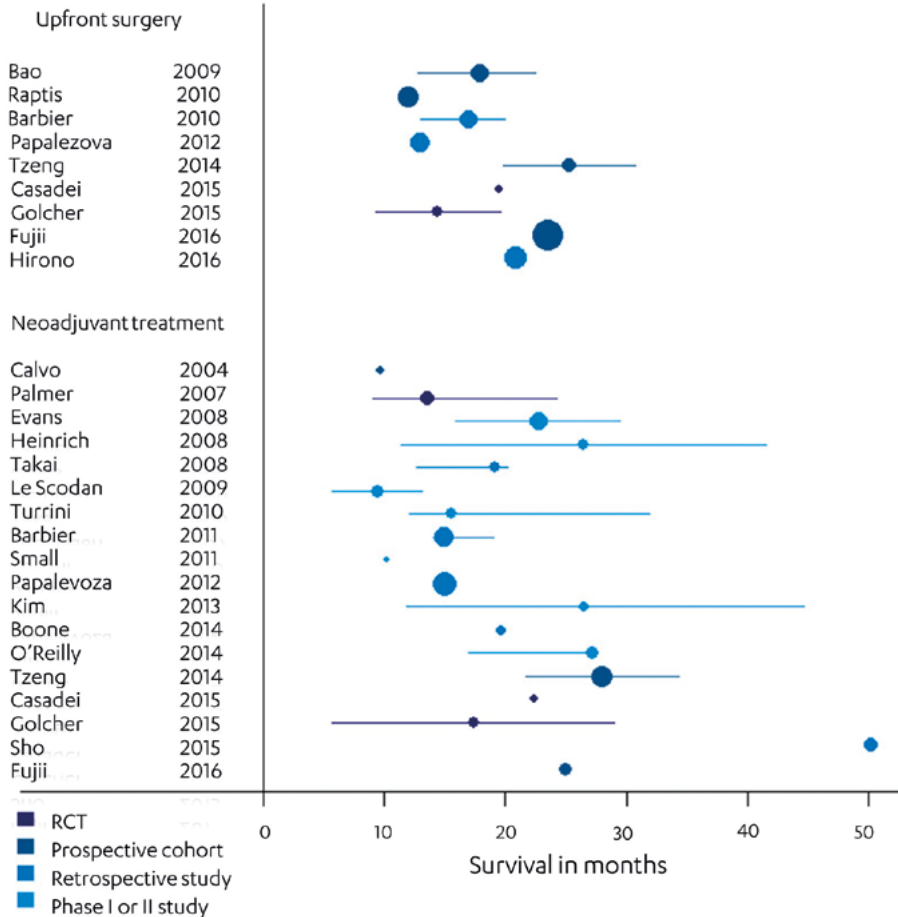


Figure 2. Median overall survival, with 95% confidence intervals, for patients with resectable pancreatic cancer after upfront surgery and after neoadjuvant treatment. The square of radius of the spheres is related to number of patients in the study.

with neoadjuvant treatment when the results were reported by intention to treat (58.0 versus 54.9%; P=0.088). This difference is obviously smaller, because it is the resection rate multiplied by the RO rate.

The RO resection rate was reported in 11 studies after upfront surgery and was 66.9% (95% CI 64.2 to 69.6) (range 17–81).^{15-17,19-26} After upfront surgery, the RO resection rate was 71.4% for patients with resectable pancreatic cancer, and 63.9% for those with borderline-resectable pancreatic cancer. For patients treated with neoadjuvant therapy who underwent exploratory laparotomy followed by resection, the RO resection rate was 86.8% (95% CI 84.6 to 88.7) (range 38.9–100). After neoadjuvant treatment, the RO resection rate was 85.0% among patients with resectable pancreatic cancer and 88.6% for those with borderline-resectable cancer.

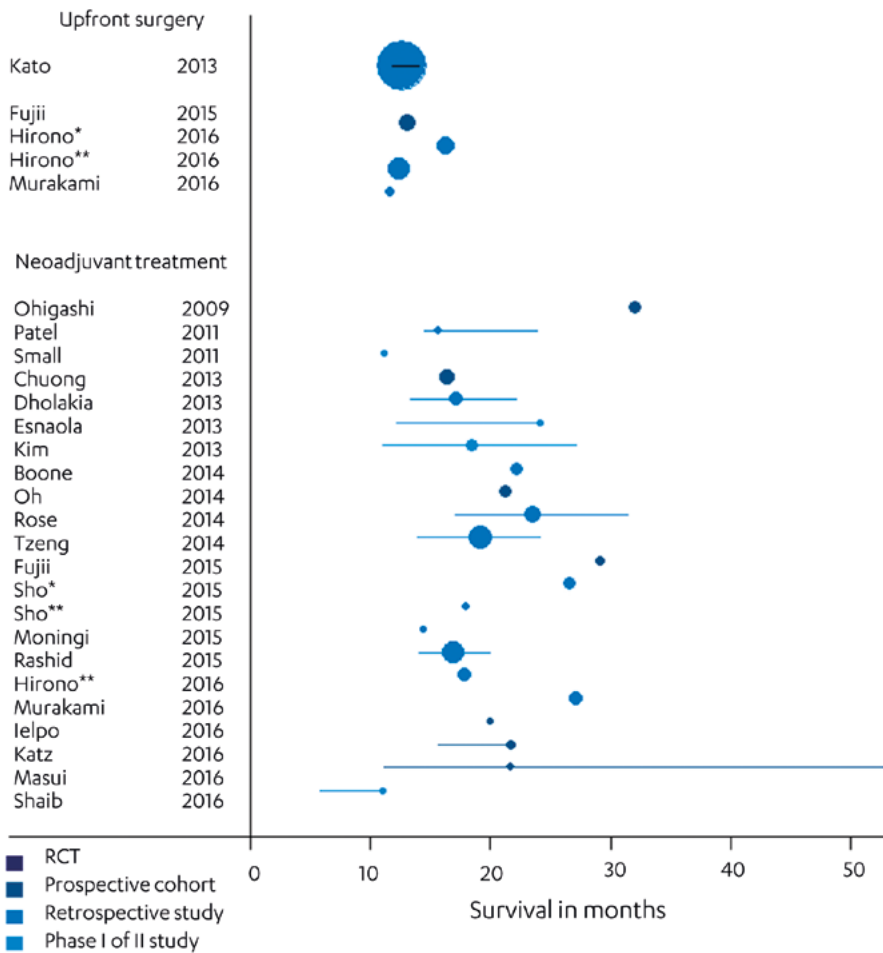


Figure 3. Median overall survival, with 95% confidence intervals, for patients with borderline-resectable pancreatic cancer after upfront surgery and after neoadjuvant treatment. The square of radius of the spheres is related to number of patients in the study. *Borderline resectable owing to venous involvement; *borderline resectable owing to arterial involvement.

Pathological lymph node rate

The pathological lymph node rate was reported in 11 studies after upfront surgery and was 64.8% (95% CI 62.0 to 67.5)^{15-17,19-26}, compared with 43.8% (40.6 to 47.1) after neoadjuvant treatment in 27 studies.^{15,16,19-23,25-32,34-36,38-41,43,46,47,49,52} This difference in pathological lymph node rates between the two groups was significant ($P < 0.001$).

Reasons for not performing surgery

Of the 35 neoadjuvant therapy studies, 29 reported the reason for not performing exploratory surgery. In total, 306 patients (17.8%) did not proceed to exploratory surgery. Progression of disease (locally advanced or metastasis) was the most common reason for not undertaking exploratory surgery in 64.4% of these patients. In total, 55 patients (18.0%) could not undergo surgery because of severe side-effects or deterioration of performance after neoadjuvant treatment, representing 3.2% of all patients starting neoadjuvant treatment. For the remaining patients there were other reasons, or the reason was not known. The reasons for not performing tumour resection during exploratory surgery were reported in 23 of the 35 studies (Supplementary Data). Resection was not undertaken in at least 532 patients (15.3% of all 3484 included patients). The most common reason for this was distant metastasis in 42.5% of these patients. Disease progression was the reason for not resecting the tumour in 25.6%.

Toxicity

There was a wide range of reported toxicity of neoadjuvant treatment across studies. The most common reported adverse events were gastrointestinal (emesis, nausea and diarrhoea) and haematological (thrombopenia, leucopenia). Toxicity of at least grade III was reported in 21 studies, with a rate of up to 64%, involving mostly leucopenia, thrombocytopenia, nausea and fatigue.^{15,16,20,25,27-34,36-39,42-44,46,50} Katz and colleagues reported a grade III toxicity rate of 64%, in a study in which FOLFIRINOX (leucovorin, 5-fluorouracil, irinotecan and oxaliplatin) chemotherapy was combined with radiotherapy at a dose of 50.4 Gy.³⁹ Grade IV toxicity was reported in 13 studies, and consisted mostly of haematological adverse events.

DISCUSSION

In this systematic review, median overall survival was 18.8 months after neoadjuvant treatment versus 14.8 months after upfront surgery of resectable or borderline-pancreatic cancer in intention-to-treat analysis. The R0 resection rate and pathological lymph node rate were also improved in the neoadjuvant group. These results suggest the superiority of neoadjuvant treatment over upfront surgery. Previous studies reported outcomes of patients who actually underwent resection, rather than reporting by intention to treat, thus introducing a survival bias.^{13,53}

Median survival times for patients who actually underwent resection were 26.1 months in the neoadjuvant group and 15.0 months for upfront surgery in this review. This difference in median overall survival between the groups (11.1 months) is much bigger than the difference in the intention-to-treat analysis (4.0 months). Reporting by intention to treat reduces potential bias

in treatment effect as not all patients proceed to surgery, and a large proportion of patients do not receive adjuvant chemotherapy owing to postoperative complications. Prospective phase II studies investigating the role of neoadjuvant treatment have to report on all patients included in the trial by intention to treat.⁵⁴ Therefore, for a fair comparison, upfront surgery studies and observational studies of neoadjuvant treatment should also report by intention to treat.

In the present review, 17.8% of patients who had neoadjuvant treatment did not undergo exploratory surgery. This selects out patients with an aggressive pancreatic cancer that would probably have progressed in a short time after surgery anyway, thus avoiding a potentially harmful operation. In the upfront surgery group, the resection rate for patients with borderline-resectable pancreatic cancer was significantly higher than that for patients with resectable tumours (85.3 versus 76.8% respectively). This is a counterintuitive finding, as one would expect the resection rate to be higher for resectable pancreatic cancer. There is no good explanation for this finding, but the different criteria being used worldwide for assessing resectability or suboptimal preoperative assessment on CT may play a role. Centralization of pancreatic surgery has led to increased resection rates, but this was not investigated here.⁵⁵

The R0 resection rate among patients actually undergoing tumour resection was significantly better in the neoadjuvant treatment group, which is in line with the hypothesis that neoadjuvant treatment provides higher R0 rates than surgery alone.⁵⁶ The R0 resection rate after upfront surgery is comparable to rates of 29–81%, depending on the R0 criteria being used, in recent large series of pancreatic cancer resection.^{1,57,58} The pathological lymph node rate was also significantly different between the upfront surgery and neoadjuvant treatment groups, which may be the result of the neoadjuvant treatment causing regression of lymph node metastases.⁵⁹

No difference in surgical morbidity and mortality has been reported in studies comparing neoadjuvant treatment with upfront surgery.⁶⁰⁻⁶² A possible advantage of neoadjuvant radiation is the development of pancreatic fibrosis, which may be associated with reduced occurrence of pancreas fistula after resection.^{60,61,63} Adjuvant chemotherapy is the current standard of care after resection of pancreatic cancer¹, but this treatment is often not given, or not completed, owing to a prolonged complicated postoperative course, or the preference of the patient or doctor. Data from the Netherlands Cancer Registry revealed that only 54% of all patients undergoing pancreatoduodenectomy received adjuvant chemotherapy, because of toxicity, age and other factors.⁶⁴ In the present review, the toxicity reported most frequently consisted of adverse gastrointestinal and haematological events. Overall, treatment-related toxicity was given as the reason for not proceeding to exploratory surgery in only 3.2% of the 1723 patients who started neoadjuvant treatment.

Median overall survival varied widely across the studies, which may be explained by the different criteria used for resectability. Most studies used the NCCN or MD Anderson Cancer Center criteria for resectability, but some studies used neither of these.^{65,66} Objective definitions of resectability are critical for the conduct of clinical trials of neoadjuvant treatment. Another explanation for the heterogeneity may be the variation in neoadjuvant treatment regimens across studies. The difference in receipt of postoperative adjuvant treatment (68.6% in the upfront surgery group

versus 31% in the neoadjuvant group) may in part be explained by the fact that these patients had already received part or all of their systemic therapy before surgery.

The expert consensus statement of the AHPBA indicates that neoadjuvant therapy provides a rational alternative to an upfront surgery approach and could be considered in all patients with resectable pancreatic cancer.⁶⁷ Evidence from RCTs is still lacking. The Dutch Pancreatic Cancer Group has just finished accrual of the multicentre randomized PREOPANC trial (EU Clinical Trials Register: 2012-003181-40) of neoadjuvant chemoradiotherapy versus upfront surgery.⁶⁸ The hypothesis is that neoadjuvant chemoradiotherapy may result in an increase in R0 resection rate and overall survival in patients with resectable or borderline-resectable pancreatic cancer.⁶⁸ The trial has randomized the required 248 patients during a 4-year interval and the first results are expected in 2018. Five other randomized trials are ongoing in Germany, Switzerland and Norway to investigate the role of neoadjuvant treatment in resectable pancreatic cancer.⁶⁹⁻⁷³ Two previous RCTs from Italy and Germany were terminated early because of poor accrual.^{15,16}

Some limitations of the present systematic review must be taken into account. First, the quality of the included studies is moderate; the majority are retrospective studies, with high suspicion of bias. Only three studies were RCTs, and only two of these, with a total of 104 patients, randomized between upfront surgery and neoadjuvant treatment followed by surgery. Both these studies were terminated early. Owing to the clinical and methodological heterogeneity, no network analysis could be performed. Despite the limitations, the results provide the most reliable survival data, reported by intention to treat, in patients with resectable or borderline-resectable pancreatic cancer.

ACKNOWLEDGEMENTS

The authors thank L. Barbier, R. Casadei, H. Golcher, S. Helton, H. Kato, P. A. Lind, T. Masui, R. Neale, J. B. Rose and C. R. Shubert for providing more detailed information about their articles; and R. Hollman for providing the median OS figures. J.A.V. and M.G.B. received a grant (no. 2014-7244) from the Dutch Cancer Society for studies on pancreatic cancer.

REFERENCES

1. Neoptolemos JP, Palmer DH, Ghaneh P, et al: Comparison of adjuvant gemcitabine and capecitabine with gemcitabine monotherapy in patients with resected pancreatic cancer (ESPAC-4): a multicentre, open-label, randomised, phase 3 trial. *Lancet* 389:1011-1024, 2017
2. Sinn M, Bahra M, Liersch T, et al: CONKO-005: Adjuvant Chemotherapy With Gemcitabine Plus Erlotinib Versus Gemcitabine Alone in Patients After R0 Resection of Pancreatic Cancer: A Multicenter Randomized Phase III Trial. *J Clin Oncol* 35:3330-3337, 2017
3. Shaib Y, Davila J, Naumann C, et al: The impact of curative intent surgery on the survival of pancreatic cancer patients: a U.S. Population-based study. *Am J Gastroenterol* 102:1377-82, 2007
4. Shrikhande SV, Barreto SG: Surgery for pancreatic carcinoma: state of the art. *Indian J Surg* 74:79-86, 2012
5. Stessin AM, Meyer JE, Sherr DL: Neoadjuvant radiation is associated with improved survival in patients with resectable pancreatic cancer: an analysis of data from the surveillance, epidemiology, and end results (SEER) registry. *Int J Radiat Oncol Biol Phys* 72:1128-33, 2008
6. Dutch Institute for Clinical Auditing (DICA). Jaarrapportage 2014. <http://www.clinicalaudit.nl> [accessed 1 September 2017]
7. Liberati A, Altman DG, Tetzlaff J, et al: The PRISMA statement for reporting systematic reviews and meta-analyses of studies that evaluate healthcare interventions: explanation and elaboration. *Bmj* 339:b2700, 2009
8. Oxford Centre for Evidence-Based Medicine. Critical Appraisal for Therapy Articles, 2005. <http://www.cebm.net/critical-appraisal/> [accessed 1 September 2017]
9. Critical Appraisal Skills Programme. 11 Questions to Help You Make Sense of a Trial. Randomised Controlled Trials Checklist; 2013. <http://www.casp-uk.net/#!casp-tools-checklists/c18f8> [accessed 1 September 2017].
10. Critical Appraisal Skills Programme. 12 Questions to Help You Make Sense of Cohort Study. Cohort Study Checklist; 2013. <http://www.casp-uk.net/#!casp-tools-checklists/c18f8> [accessed 1 September 2017].
11. Higgins JP, Altman DG, Gotzsche PC, et al: The Cochrane Collaboration's tool for assessing risk of bias in randomised trials. *Bmj* 343:d5928, 2011
12. Oxford Centre for Evidence-Based Medicine, Levels of Evidence Working Group. The Oxford 2011 Levels of Evidence. <http://www.cebm.net/wp-content/uploads/2014/06/CEBMLevels-of-Evidence-2.1.pdf> [accessed 1 September 2017].
13. Gillen S, Schuster T, Meyer Zum Buschenfelde C, et al: Preoperative/neoadjuvant therapy in pancreatic cancer: a systematic review and meta-analysis of response and resection percentages. *PLoS Med* 7:e1000267, 2010
14. UCSF Clinical & Translational Science Institute. Sample Size Calculator: Confidence Interval for a Proportion. <http://www.sample-size.net/confidence-interval-proportion> [accessed 1 September 2017].
15. Casadei R, Di Marco M, Ricci C, et al: Neoadjuvant Chemoradiotherapy and Surgery Versus Surgery Alone in Resectable Pancreatic Cancer: A Single-Center Prospective, Randomized, Controlled Trial Which Failed to Achieve Accrual Targets. *J Gastrointest Surg* 19:1802-12, 2015
16. Golcher H, Brunner TB, Witzigmann H, et al: Neoadjuvant chemoradiation therapy with gemcitabine/cisplatin and surgery versus immediate surgery in resectable pancreatic cancer: results of the first prospective randomized phase II trial. *Strahlenther Onkol* 191:7-16, 2015
17. Bao P, Potter D, Eisenberg DP, et al: Validation of a prediction rule to maximize curative (R0) resection of early-stage pancreatic adenocarcinoma. *HPB (Oxford)* 11:606-11, 2009
18. Raptis DA, Fessas C, Belasyse-Smith P, et al: Clinical presentation and waiting time targets do not affect prognosis in patients with pancreatic cancer. *Surgeon* 8:239-46, 2010

19. Tzeng CW, Tran Cao HS, Lee JE, et al: Treatment sequencing for resectable pancreatic cancer: influence of early metastases and surgical complications on multimodality therapy completion and survival. *J Gastrointest Surg* 18:16-24; discussion 24-5, 2014
20. Fujii T, Yamada S, Murotani K, et al: Inverse Probability of Treatment Weighting Analysis of Upfront Surgery Versus Neoadjuvant Chemoradiotherapy Followed by Surgery for Pancreatic Adenocarcinoma with Arterial Abutment. *Medicine (Baltimore)* 94:e1647, 2015
21. Fujii T, Satoi S, Yamada S, et al: Clinical benefits of neoadjuvant chemoradiotherapy for adenocarcinoma of the pancreatic head: an observational study using inverse probability of treatment weighting. *J Gastroenterol* 52:81-93, 2017
22. Barbier L, Turrini O, Gregoire E, et al: Pancreatic head resectable adenocarcinoma: preoperative chemoradiation improves local control but does not affect survival. *HPB (Oxford)* 13:64-9, 2011
23. Papalezova KT, Tyler DS, Blazer DG, 3rd, et al: Does preoperative therapy optimize outcomes in patients with resectable pancreatic cancer? *J Surg Oncol* 106:111-8, 2012
24. Kato H, Usui M, Isaji S, et al: Clinical features and treatment outcome of borderline resectable pancreatic head/body cancer: a multi-institutional survey by the Japanese Society of Pancreatic Surgery. *J Hepatobiliary Pancreat Sci* 20:601-10, 2013
25. Hirono S, Kawai M, Okada KI, et al: Treatment Strategy for Borderline Resectable Pancreatic Cancer With Radiographic Artery Involvement. *Pancreas* 45:1438-1446, 2016
26. Murakami Y, Uemura K, Sudo T, et al: Survival impact of neoadjuvant gemcitabine plus S-1 chemotherapy for patients with borderline resectable pancreatic carcinoma with arterial contact. *Cancer Chemother Pharmacol* 79:37-47, 2017
27. Palmer DH, Stocken DD, Hewitt H, et al: A randomized phase 2 trial of neoadjuvant chemotherapy in resectable pancreatic cancer: gemcitabine alone versus gemcitabine combined with cisplatin. *Ann Surg Oncol* 14:2088-96, 2007
28. Evans DB, Varadhachary GR, Crane CH, et al: Preoperative gemcitabine-based chemoradiation for patients with resectable adenocarcinoma of the pancreatic head. *J Clin Oncol* 26:3496-502, 2008
29. Heinrich S, Pestalozzi BC, Schafer M, et al: Prospective phase II trial of neoadjuvant chemotherapy with gemcitabine and cisplatin for resectable adenocarcinoma of the pancreatic head. *J Clin Oncol* 26:2526-31, 2008
30. Le Scodan R, Mornex F, Girard N, et al: Preoperative chemoradiation in potentially resectable pancreatic adenocarcinoma: feasibility, treatment effect evaluation and prognostic factors, analysis of the SFRO-FFCD 9704 trial and literature review. *Ann Oncol* 20:1387-96, 2009
31. Turrini O, Ychou M, Moureau-Zabotto L, et al: Neoadjuvant docetaxel-based chemoradiation for resectable adenocarcinoma of the pancreas: New neoadjuvant regimen was safe and provided an interesting pathologic response. *Eur J Surg Oncol* 36:987-92, 2010
32. Small W, Jr., Mulcahy MF, Rademaker A, et al: Phase II trial of full-dose gemcitabine and bevacizumab in combination with attenuated three-dimensional conformal radiotherapy in patients with localized pancreatic cancer. *Int J Radiat Oncol Biol Phys* 80:476-82, 2011
33. Esnaola NF, Chaudhary UB, O'Brien P, et al: Phase 2 trial of induction gemcitabine, oxaliplatin, and cetuximab followed by selective capecitabine-based chemoradiation in patients with borderline resectable or unresectable locally advanced pancreatic cancer. *Int J Radiat Oncol Biol Phys* 88:837-44, 2014
34. Kim EJ, Ben-Josef E, Herman JM, et al: A multi-institutional phase 2 study of neoadjuvant gemcitabine and oxaliplatin with radiation therapy in patients with pancreatic cancer. *Cancer* 119:2692-700, 2013
35. O'Reilly EM, Perelshteyn A, Jarnagin WR, et al: A single-arm, nonrandomized phase II trial of neoadjuvant gemcitabine and

- oxaliplatin in patients with resectable pancreas adenocarcinoma. *Ann Surg* 260:142-8, 2014
36. Shaib WL, Hawk N, Cassidy RJ, et al: A Phase 1 Study of Stereotactic Body Radiation Therapy Dose Escalation for Borderline Resectable Pancreatic Cancer After Modified FOLFIRINOX (NCT01446458). *Int J Radiat Oncol Biol Phys* 96:296-303, 2016
 37. Calvo FA, Matute R, Garcia-Sabrido JL, et al: Neoadjuvant chemoradiation with tegafur in cancer of the pancreas: initial analysis of clinical tolerance and outcome. *Am J Clin Oncol* 27:343-9, 2004
 38. Ohigashi H, Ishikawa O, Eguchi H, et al: Feasibility and efficacy of combination therapy with preoperative full-dose gemcitabine, concurrent three-dimensional conformal radiation, surgery, and postoperative liver perfusion chemotherapy for T3-pancreatic cancer. *Ann Surg* 250:88-95, 2009
 39. Katz MH, Shi Q, Ahmad SA, et al: Preoperative Modified FOLFIRINOX Treatment Followed by Capecitabine-Based Chemoradiation for Borderline Resectable Pancreatic Cancer: Alliance for Clinical Trials in Oncology Trial A021101. *JAMA Surg* 151:e161137, 2016
 40. Oh TG, Chung MJ, Bang S, et al: Validation of group B borderline resectable pancreatic cancer: retrospective analysis. *Gut Liver* 8:557-62, 2014
 41. Tzeng CW, Balachandran A, Ahmad M, et al: Serum carbohydrate antigen 19-9 represents a marker of response to neoadjuvant therapy in patients with borderline resectable pancreatic cancer. *HPB (Oxford)* 16:430-8, 2014
 42. Ielpo B, Duran H, Diaz E, et al: Preoperative treatment with gemcitabine plus nab-paclitaxel is a safe and effective chemotherapy for pancreatic adenocarcinoma. *Eur J Surg Oncol* 42:1394-400, 2016
 43. Masui T, Doi R, Kawaguchi Y, et al: Concurrent gemcitabine+S-1 neoadjuvant chemotherapy contributes to the improved survival of patients with small borderline-resectable pancreatic cancer tumors. *Surg Today* 46:1282-9, 2016
 44. Takai S, Satoi S, Yanagimoto H, et al: Neoadjuvant chemoradiation in patients with potentially resectable pancreatic cancer. *Pancreas* 36:e26-32, 2008
 45. Patel M, Hoffs S, Malafa M, et al: Neoadjuvant GTX chemotherapy and IMRT-based chemoradiation for borderline resectable pancreatic cancer. *J Surg Oncol* 104:155-61, 2011
 46. Chuong MD, Springett GM, Freilich JM, et al: Stereotactic body radiation therapy for locally advanced and borderline resectable pancreatic cancer is effective and well tolerated. *Int J Radiat Oncol Biol Phys* 86:516-22, 2013
 47. Dholakia AS, Hacker-Prietz A, Wild AT, et al: Resection of borderline resectable pancreatic cancer after neoadjuvant chemoradiation does not depend on improved radiographic appearance of tumor-vessel relationships. *J Radiat Oncol* 2:413-425, 2013
 48. Boone BA, Steve J, Zenati MS, et al: Serum CA 19-9 response to neoadjuvant therapy is associated with outcome in pancreatic adenocarcinoma. *Ann Surg Oncol* 21:4351-8, 2014
 49. Rose JB, Rocha FG, Alseidi A, et al: Extended neoadjuvant chemotherapy for borderline resectable pancreatic cancer demonstrates promising postoperative outcomes and survival. *Ann Surg Oncol* 21:1530-7, 2014
 50. Moinji S, Dholakia AS, Raman SP, et al: The Role of Stereotactic Body Radiation Therapy for Pancreatic Cancer: A Single-Institution Experience. *Ann Surg Oncol* 22:2352-8, 2015
 51. Sho M, Akahori T, Tanaka T, et al: Importance of resectability status in neoadjuvant treatment for pancreatic cancer. *J Hepatobiliary Pancreat Sci* 22:563-70, 2015
 52. Rashid OM, Pimiento JM, Gamenthaler AW, et al: Outcomes of a Clinical Pathway for Borderline Resectable Pancreatic Cancer. *Ann Surg Oncol* 23:1371-9, 2016
 53. Laurence JM, Tran PD, Morarji K, et al: A systematic review and meta-analysis of survival and surgical outcomes following neoadjuvant chemoradiotherapy for pancreatic cancer. *J Gastrointest Surg* 15:2059-69, 2011

54. Gupta SK: Intention-to-treat concept: A review. *Perspect Clin Res* 2:109-12, 2011
55. Gooiker GA, Lemmens VE, Besselink MG, et al: Impact of centralization of pancreatic cancer surgery on resection rates and survival. *Br J Surg* 101:1000-5, 2014
56. Chua TC, Saxena A: Preoperative chemoradiation followed by surgical resection for resectable pancreatic cancer: a review of current results.
57. Howard TJ, Krug JE, Yu J, et al: A margin-negative R0 resection accomplished with minimal postoperative complications is the surgeon's contribution to long-term survival in pancreatic cancer. *J Gastrointest Surg* 10:1338-45; discussion 1345-6, 2006
58. Chandrasegaram MD, Goldstein D, Simes J, et al: Meta-analysis of radical resection rates and margin assessment in pancreatic cancer. *Br J Surg* 102:1459-72, 2015
59. Roland CL, Yang AD, Katz MH, et al: Neoadjuvant therapy is associated with a reduced lymph node ratio in patients with potentially resectable pancreatic cancer. *Ann Surg Oncol* 22:1168-75, 2015
60. Cooper AB, Parmar AD, Riall TS, et al: Does the use of neoadjuvant therapy for pancreatic adenocarcinoma increase postoperative morbidity and mortality rates? *J Gastrointest Surg* 19:80-6; discussion 86-7, 2015
61. Denbo JW, Bruno ML, Cloyd JM, et al: Preoperative Chemoradiation for Pancreatic Adenocarcinoma Does Not Increase 90-Day Postoperative Morbidity or Mortality. *J Gastrointest Surg* 20:1975-1985, 2016
62. Araujo RL, Gaujoux S, Huguet F, et al: Does pre-operative chemoradiation for initially unresectable or borderline resectable pancreatic adenocarcinoma increase post-operative morbidity? A case-matched analysis. *HPB (Oxford)* 15:574-80, 2013
63. Ishikawa O, Ohigashi H, Imaoka S, et al: Concomitant benefit of preoperative irradiation in preventing pancreas fistula formation after pancreatoduodenectomy. *Arch Surg* 126:885-9, 1991
64. Bakens MJ, van der Geest LG, van Putten M, et al: The use of adjuvant chemotherapy for pancreatic cancer varies widely between hospitals: a nationwide population-based analysis. *Cancer Med* 5:2825-2831, 2016
65. National Comprehensive Cancer Network. NCCN Guideline: Pancreatic Adenocarcinoma. Version 2.2016. <http://www.trikobe.org/nccn/guideline/pancreas/english/pancreatic.pdf> [accessed 1 September 2017].
66. Katz MH, Marsh R, Herman JM, et al: Borderline resectable pancreatic cancer: need for standardization and methods for optimal clinical trial design. *Ann Surg Oncol* 20:2787-95, 2013
67. Abrams RA, Lowy AM, O'Reilly EM, et al: Combined modality treatment of resectable and borderline resectable pancreas cancer: expert consensus statement. *Ann Surg Oncol* 16:1751-6, 2009
68. Versteijne E, van Eijck CH, Punt CJ, et al: Preoperative radiochemotherapy versus immediate surgery for resectable and borderline resectable pancreatic cancer (PREOPANC trial): study protocol for a multicentre randomized controlled trial. *Trials* 17:127, 2016
69. Tachezy M, Gebauer F, Petersen C, et al: Sequential neoadjuvant chemoradiotherapy (CRT) followed by curative surgery vs. primary surgery alone for resectable, non-metastasized pancreatic adenocarcinoma: NEOPA- a randomized multicenter phase III study (NCT01900327, DRKS00003893, ISRCTN82191749). *BMC Cancer* 14:411, 2014
70. Heinrich S, Pestalozzi B, Lesurtel M, et al: Adjuvant gemcitabine versus NEOadjuvant gemcitabine/oxaliplatin plus adjuvant gemcitabine in resectable pancreatic cancer: a randomized multicenter phase III study (NEOPAC study). *BMC Cancer* 11:346, 2011
71. Ettrich TJ, Berger AW, Mucic R, et al: NEONAX: Neoadjuvant plus adjuvant or only adjuvant nab-paclitaxel plus gemcitabine for resectable pancreatic cancer—A phase II study of the AIO Pancreatic Cancer Group. *Journal of Clinical Oncology* 32:TPS4158-TPS4158, 2014
72. Hozaeel W, Pauligk C, Homann N, et al: Randomized multicenter phase II/III study with

adjuvant gemcitabine versus neoadjuvant/
adjuvant FOLFIRINOX in resectable pancreatic
cancer: The NEPAFOX trial. *Journal of Clinical
Oncology* 33:TPS4152-TPS4152, 2015

73. Labori KJ, Lassen K, Hoem D, et al: Neoadjuvant chemotherapy versus surgery first for resectable pancreatic cancer (Norwegian Pancreatic Cancer Trial - 1 (NorPACT-1)) - study protocol for a national multicentre randomized controlled trial. *BMC Surg* 17:94, 2017

SUPPLEMENTARY DATA

Appendix 1

The final update of the search was done on December 6th 2016.

1. Search strategy PubMed

((("Pancreatic Neoplasms"[Mesh] OR pancreatic cancer[tw] OR pancreatic neoplasm*[tw] OR "cancer of the pancreas"[tw] OR pancreatic head cancer[tw] OR pancreatic carcinoma[tw] OR pancreatic adenocarcinoma[tw]) AND (borderline[tw] OR resectab*[tw] OR resection[tw] OR pancreatico*[tw] OR pancreatect*[tw] OR whipple[tw])) NOT (animals[mh] NOT humans[mh])) AND (Prognosis/Broad[filter] OR "Survival"[Mesh] OR survival[tw] OR "Mortality"[Mesh] OR mortalit*[tw] OR death rate*[tw] OR "mortality"[Subheading] OR cox regression[tw] OR "Survival Analysis"[Mesh] OR proportional hazard[tw] OR kaplan[tw]))

2. Search strategy EMBASE Classic + EMBASE 1947 to Present, Ovid interface

- 1.exp pancreas cancer/
- 2.(pancreatic neoplasm? OR pancreatic carcinoma).ab,kw,ti
- 3.(pancreatic adenocarcinoma).ab,kw,ti
- 4.(cancer ADJ3 pancreas).ab,kw,ti
- 5.(pancreatic ADJ2 cancer).ab,kw,ti
- 6.or/1-5
- 7.borderline.ab,ti,kw
- 8.(resectab* OR resection OR pancreatico* OR pancreatect* OR whipple).ab,ti,kw
- 9.or/7-8
- 10.6 and 9
- 11.(prognos: OR survival).tw [McMaster specifiek filter]
- 12.exp survival/
- 13.survival.ab,kw,ti
- 14.exp mortality/
- 15.(mortalit* OR death rate*).ab,ti,kw.
- 16.(cox regression OR (cox ADJ2 analys*)).ab,kw,ti
- 17.proportional hazard?.ab,kw,sh,ti
- 18.kaplan.ab,kw,ti
- 19.or/11-18 [survival]
- 20.10 and 19
- 21.exp animals/ or exp invertebrate/ or animal experiment/ or animal model/ or animal 22.tissue/ or animal cell/ or nonhuman/
23. human/ or normal human/ or human cell/
- 24.21 and 22
- 25.21 not 23
- 26.20 not 24

3. Search strategy *The Cochrane Library, Wiley interface*

“pancreatic cancer” AND “resectable”

Table 1. Critical appraisal of studies reporting on median overall survival of patients with resectable or borderline-resectable pancreatic cancer after upfront surgery

Reference	Level of evidence*	Random sequence generation	Allocation on concealment	Blinding	Data outcome	Selective reporting	Missing data verified	Follow up factor	Confounding	Comparable groups
Bao	2c	-	-	-	Low	Low	N.A.	Low	-	N.A.
Kato	4	-	-	-	Low	Low	-	N.R.	+	N.A.
Raptis	4	-	-	-	Low	Low	N.A.	High	+	N.A.

*According the Oxford Centre for Evidence-Based Medicine levels of evidence²³; -, no; +, yes; N.R.= not reported; N.A.=not applicable.

Table 2. Critical appraisal of studies reporting on median overall survival of patients with resectable or borderline-resectable pancreatic cancer after upfront surgery or neoadjuvant treatment followed by surgery

Reference	Level of evidence*	Random sequence generation	Allocation on concealment	Blinding	Data outcome	Selective reporting	Missing data verified	Follow up factor	Confounding	Comparable groups
Barbier	4	-	-	-	Low	Low	N.A.	Low	-	+
Casadei	2b	Low	Low	Unclear risk	Low	Low	N.A.	N.R.	-	+
Fujii (2016)	3b	-	-	-	Low	Low	+	Low	-	-
Fujii (2015)	3b	-	-	-	Low	Low	N.A.	High	-	+
Golcher	2b	Unclear risk	Unclear risk	Unclear risk	Low	Low	+	Low	+	+
Hirono	4	-	-	-	Low	Low	N.A.	N.R.	+	-
Murakami	4	-	-	-	Low	Low	N.A.	Low	-	+
Papalezova	4	-	-	-	Low	Low	N.A.	Low	+	-
Tzeng (2014)	4	-	-	-	Low	Low	+	Low	+	-

*According the Oxford Centre for Evidence-Based Medicine levels of evidence²³; -, no; +, yes; N.R.= not reported; N.A.=not applicable.

Table 3. Critical appraisal of studies reporting on median overall survival of patients with resectable or borderline-resectable pancreatic cancer after neoadjuvant treatment followed by surgery

Reference	Level of evidence*	Random			Blinding	Data outcome	Selective reporting	Missing data		Follow up factor	Confounding	Comparable groups
		sequence generation	Allocation on concealment	Allocation on				verified	Confounder			
Boone	4	-	-	-	Low	Low	N.A.	N.A.	Low	+	N.A.	
Calvo	2b	-	-	-	Low	Low	N.A.	N.A.	Low	-	N.A.	
Chuong	4	-	-	-	Low	Low	-	-	High	+	N.A.	
Dholakia	4	-	-	-	Low	Low	N.A.	N.A.	N.R.	+	-	
Esnaola	2b	-	-	-	Low	Low	-	-	Low	-	N.A.	
Evans	2b	-	-	-	Low	Low	N.A.	N.A.	N.R.	-	N.A.	
Heinrich	2b	-	-	-	Low	Low	N.A.	N.A.	N.R.	-	N.A.	
Ielpo	2b	-	-	-	Low	Low	N.A.	N.A.	Low	-	N.A.	
Katz	2b	-	-	-	Low	Low	+	+	N.R.	-	N.A.	
Kim	2b	-	-	-	Low	Low	+	+	Low	-	N.A.	
Le Scodan	2b	-	-	-	Low	Low	N.A.	N.A.	High	-	N.A.	
Masui	2b	-	-	-	Low	Low	N.A.	N.A.	Low	-	N.A.	
Moningi	4	-	-	-	Low	Low	High	-	High	-	-	
Oh et	2c	-	-	-	Low	Low	Low	N.A.	High	-	-	
Ohigashi	2c	-	-	-	Low	Low	High	N.A.	High	+	N.A.	
O'Reilly	2b	-	-	-	Low	Low	Low	+	Low	-	-	
Palmer	1b	+	+	-	Low	Low	Low	N.A.	Low	-	+	
Patel	4	-	-	-	Low	Low	High	N.A.	Low	-	+	
Rashid	4	-	-	-	Low	Low	Low	-	N.R.	-	-	
Rose	4	-	-	-	Low	Low	Low	N.A.	High	-	+	
Shaib	2b	-	-	-	Low	Low	Low	N.A.	Low	+	-	
Sho	4	-	-	-	Low	Low	Low	N.A.	Low	-	+	
Small	2b	-	-	-	Low	Low	Low	+	High	+	N.A.	
Takai	4	-	-	-	Low	Low	High	N.A.	Low	+	-	
Turrini	2b	-	-	-	Low	Low	Low	N.A.	Low	-	N.A.	
Tzeng (2014)	2c	-	-	-	Low	Low	High	+	Low	+	N.A.	

*According the Oxford Centre for Evidence-Based Medicine levels of evidence³²; -, no; +, yes; N.R.= not reported; N.A.=not applicable.

Table 4. Reasons for not performing exploratory laparotomy or resection, reported in the 38 studies

Study	Reason										
	US	NAT	No exploratory surgery	Disease progression	Metastasis	Side effects NAT	Other	No resection	Disease progression	Metastasis	Other
Casadei	20	-	-	-	-	-	-	5	3	2	0
Golcher	33	18	5	0	4	0	0	2	2	0	0
Boa	78	33	4	0	4	0	0	10	10	0	0
Raptis	102	-	-	-	-	-	-	18	5	13	0
Tzeng	52	-	-	-	-	-	-	69	N.R.	N.R.	N.R.
Fujii, 2015	71	115	20	0	13	7	0	8	N.R.	N.R.	N.R.
Fujii, 2016	233	21	2	0	2	0	0	21	5	16	0
Barbier	85	40	1	0	0	0	1	3	1	3	0
Papalevoza	92	88	37	16	16	5	0	18	5	13	0
Kato	624	144	43	6	14	16	7	24	8	16	0
Hirono	331	-	-	-	-	-	-	25	11	14	0
Murakami	25	46	6	2	4	0	0	85	N.R.	64	N.R.
Palmer	50	52	2	0	2	-	-	20	N.R.	NR	N.R.
Evans	86	50	5	1	3	1	0	3	0	3	0
Heinrich	28	86	12	0	8	3	1	18	N.R.	N.R.	N.R.
Le Scodan	41	41	5	2	1	1	0	1	1	1	0

Table 4. (continued)

Study	US			No exploratory surgery			Reason					Reason				
	US	NAT	No	exploratory surgery	Disease progression	Metastasis	Side effects	Metastasis	NAT	Other	No resection	Disease progression	Metastasis	Other		
<i>Turrini</i>	34	11	2	9	0	0	6	1	5	0	0	0	0	0		
<i>Small</i>	17	8	1	2	0	0	-	-	-	-	-	-	-	-		
<i>Esnoala</i>	12	N.R	N.R	N.R	N.R	N.R	4	N.R	N.R	4	N.R	N.R	N.R	N.R		
<i>Kim</i>	62	20	4	4	4	0	10	0	0	10	N.R	N.R	N.R	N.R		
<i>O'Reilly</i>	38	3	0	0	0	1	8	5	3	0	0	0	0	0		
<i>Shaib</i>	13	2	1	0	0	0	3	0	3	0	0	0	0	0		
<i>Calvo</i>	15	6	3	2	1	0	-	-	-	-	-	-	-	-		
<i>Ohigashi</i>	38	4	1	3	0	0	3	1	2	0	0	0	0	0		
<i>Chuong</i>	57	13	N.R	N.R	N.R	N.R	12	5	7	0	0	0	0	0		
	22	7	1	5	0	0	-	-	-	-	-	-	-	-		
<i>Oh</i>	38	11	0	11	0	0	4	N.R	N.R	4	N.R	N.R	N.R	N.R		
<i>Tzeng</i>	141	12	0	0	12	0	50	37	13	0	0	0	0	0		
<i>Ielpo</i>	7	N.R	N.R	N.R	N.R	N.R	N.R	N.R	N.R	N.R	N.R	N.R	N.R	N.R		
<i>Masui</i>	18	3	2	1	0	0	-	-	-	-	-	-	-	-		
<i>Takai</i>	32	8	1	6	0	1	-	-	-	-	-	-	-	-		
<i>Patel</i>	18	4	0	4	0	0	5	4	1	0	0	0	0	0		
<i>Dholakia</i>	50	10	6	13	1	0	11	6	3	2	2	2	2	2		
<i>Boone</i>	78	N.R	N.R	N.R	N.R	N.R	N.R	N.R	N.R	N.R	N.R	N.R	N.R	N.R		
<i>Rose</i>	64	26	10	4	4	0	8	3	5	0	0	0	0	0		
<i>Momingi</i>	14	10	N.R	N.R	N.R	N.R	-	-	-	-	-	-	-	-		
<i>Sho</i>	99	N.R	N.R	N.R	N.R	N.R	N.R	N.R	N.R	N.R	N.R	N.R	N.R	N.R		
<i>Rashid</i>	94	N.R	N.R	N.R	N.R	N.R	N.R	N.R	N.R	N.R	N.R	N.R	N.R	N.R		
<i>Total</i>	1746	1723	60	137	55	11	532	136	226	3	3	3	3	3		

NAT= neoadjuvant treatment; N.R= not reported