



## UvA-DARE (Digital Academic Repository)

### Long-term study of extreme giant pulses from PSR B0950+08 with AARTFAAC

Kuiack, M.; Wijers, R.A.M.J.; Rowlinson, A.; Shulevski, A.; Huizinga, F.; Molenaar, G.; Prasad, P.

**DOI**

[10.1093/mnras/staa1996](https://doi.org/10.1093/mnras/staa1996)

**Publication date**

2020

**Document Version**

Final published version

**Published in**

Monthly Notices of the Royal Astronomical Society

[Link to publication](#)

**Citation for published version (APA):**

Kuiack, M., Wijers, R. A. M. J., Rowlinson, A., Shulevski, A., Huizinga, F., Molenaar, G., & Prasad, P. (2020). Long-term study of extreme giant pulses from PSR B0950+08 with AARTFAAC. *Monthly Notices of the Royal Astronomical Society*, 497(1), 846-854. <https://doi.org/10.1093/mnras/staa1996>

**General rights**

It is not permitted to download or to forward/distribute the text or part of it without the consent of the author(s) and/or copyright holder(s), other than for strictly personal, individual use, unless the work is under an open content license (like Creative Commons).

**Disclaimer/Complaints regulations**

If you believe that digital publication of certain material infringes any of your rights or (privacy) interests, please let the Library know, stating your reasons. In case of a legitimate complaint, the Library will make the material inaccessible and/or remove it from the website. Please Ask the Library: <https://uba.uva.nl/en/contact>, or a letter to: Library of the University of Amsterdam, Secretariat, Singel 425, 1012 WP Amsterdam, The Netherlands. You will be contacted as soon as possible.

# Long-term study of extreme giant pulses from PSR B0950+08 with AARTFAAC

Mark Kuiack <sup>1</sup>\*, Ralph A. M. J. Wijers <sup>1</sup>, Antonia Rowlinson <sup>1,2</sup>, Aleksandar Shulevski <sup>1</sup>, Folkert Huizinga<sup>1</sup>, Gijs Molenaar<sup>3</sup> and Peeyush Prasad<sup>1</sup>

<sup>1</sup>Anton Pannekoek Institute for Astronomy, University of Amsterdam, Science Park 904, NL-1098 XH Amsterdam, the Netherlands

<sup>2</sup>ASTRON, Netherlands Institute for Radio Astronomy, Oude Hoogeveensedijk 4, NL-7991 PD Dwingeloo, the Netherlands

<sup>3</sup>Department of Physics and Electronics, Rhodes University, PO Box 94, Grahamstown 6140, South Africa

Accepted 2020 July 3. Received 2020 July 2; in original form 2019 October 10

## ABSTRACT

We report on the detection of extreme giant pulses (GPs) from one of the oldest known pulsars, the highly variable PSR B0950+08, with the Amsterdam-ASTRON Radio Transient Facility And Analysis Centre (AARTFAAC), a parallel transient detection instrument operating as a subsystem of the LOw Frequency ARray (LOFAR). During processing of our Northern Hemisphere survey for low-frequency radio transients, a sample of 275 pulses with fluences ranging from 42 to 177 kJy ms were detected in one-second snapshot images. The brightest pulses are an order of magnitude brighter than those previously reported at 42 and 74 MHz, on par with the levels observed in a previous long-term study at 103 MHz. Both their rate and fluence distribution differ between and within the various studies done to date. The GP rate is highly variable, from 0 to 30 per hour, with only two 3-h observations accounting for nearly half of the pulses detected in the 96 h surveyed. It does not vary significantly within a few-hour observation, but can vary strongly one from day to the next. The spectra appear strongly and variably structured, with emission sometimes confined to a single 195.3 kHz subband, and the pulse spectra changing on a time-scale of order 10 min.

**Key words:** pulsars: general – pulsars: individual (B0950+08) – radio continuum: transients.

## 1 INTRODUCTION

PSR B0950+08 was first reported as Cambridge Pulsed source 0950, CP0950 (Pilkington et al. 1968), soon after the first pulsar, CP1919, was detected (Hewish et al. 1968). CP0950 has a period of 0.253 s and is very nearby, with a dispersion measure of only  $2.97 \text{ pc cm}^{-3}$  and a distance of  $262 \pm 5 \text{ pc}$  (Briskin et al. 2002), improved from an earlier measurement of  $127 \pm 13 \text{ pc}$  by Gwinn et al. (1986). Its main pulse profile is single-peaked at higher frequencies but evolves to a classic double-peaked emission-cone shape at LOw Frequency ARray (LOFAR) frequencies (e.g. Pilia et al. 2016, and references therein), with a width of about 25 ms at 60 MHz. It also has a variable interpulse (Hankins & Cordes 1981), which can in rare cases be as bright as the main pulse (Cairns, Johnston & Das 2004), but since our observations do not resolve the pulse at all, we cannot distinguish between the two and have to group their effects together.

Already in its discovery paper CP0950 was reported to be highly variable in intensity, by more than a factor 10, much more so than other pulsars (e.g. Cole, Hesse & Page 1970). It was also soon recognized that pulsar pulse profiles could consist of subpulses (e.g. Cole 1970). Specifically, Hankins (1971) showed that CP0950 could have very fine and highly variable time structure, sometimes with very bright spikes, unresolved at 10  $\mu\text{s}$ , rising to many times the average pulse peak flux density. Such spikes became known as ‘giant micropulses’: extremely bright spikes that typically do not cause the

pulse-integrated fluence to increase by a large factor. The threshold is usually defined as a peak flux density of the spike ten times the average pulse (AP) peak flux density (e.g. Cairns 2004). The most famous example of these are the Crab nanopulses (Hankins et al. 2003). However, already in the early days it was also shown that some pulsars emit so-called giant pulses (GPs), in which the pulse-integrated flux density, i.e. the pulse fluence, is much greater than that of the AP. This was first discovered from the Crab pulsar (Staelin & Reifenstein 1968), and again the now common definition is that a GP has at least a ten times greater fluence than the AP. By these definitions, the phenomenon is rare: according to the ATNF Pulsar Catalogue,<sup>1</sup> currently there are 2659 known pulsars (Manchester et al. 2005), of which only 24 have been observed to produce GPs (Kazantsev & Potapov 2018).

It has also been shown that the fluence of a pulsar’s AP can vary by up to an order of magnitude over the course of a few days. This long-term variability in the AP itself is attributed to propagation effects, such as refractive or diffractive interstellar scintillation, RISS and DISS, respectively (Gupta, Rickett & Coles 1993; Wang et al. 2005). However, both the GPs and giant micropulses are single-pulse events, with the next pulse usually being ‘normal’, which implies that they come and go too fast to be caused by any interstellar propagation effect (e.g. Singal & Vats 2012). The factor-10 thresholds for calling something a GP or giant micropulse appear to be arbitrary. In well-studied cases, there is not a bimodal distribution of instantaneous

\* E-mail: [m.j.kuiack@uva.nl](mailto:m.j.kuiack@uva.nl)

<sup>1</sup><http://www.atnf.csiro.au/research/pulsar/psrcat/>

peak fluxes or pulse fluences, as revealed for example in the detailed studies of PSR B0950+08 itself (Cairns et al. 2004) or in the study by Kazantsev & Potapov (2018) of the pulse flux distributions of a number of pulsars in which some new giant-pulse producers were discovered. It may even be that both GPs and giant micropulses are parts of a continuum of strength and structure in individual pulsar pulses. On the other hand, the GPs are generally narrower to much narrower in duration (e.g. Hankins 1971; Tsai et al. 2016; Johnston et al. 2001) and have intricate patterns in their frequency structure and in the phases where they appear, as best studied in the Crab pulsar (Hankins, Eilek & Jones 2016, and references therein). Also, there is a strong preference for the GPs to line up in phase with high-energy emission of the same pulsar (Johnston & Romani 2002).

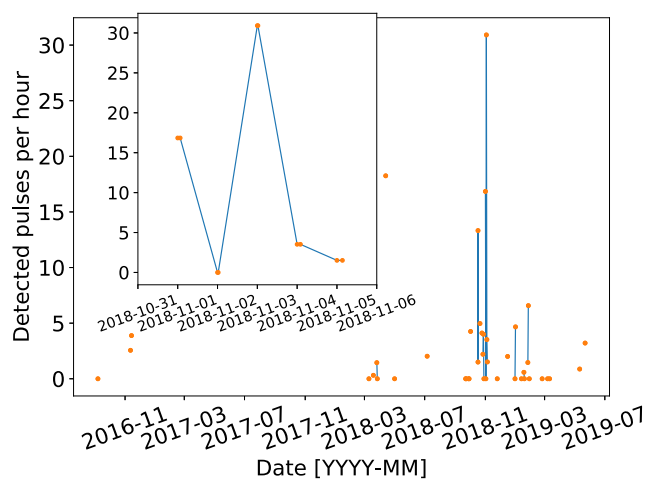
Here, we report on the detection of extreme GPs, with fluences up to 400 times that of the AP, from the pulsar PSR B0950+08 by AARTFAAC. Our time resolution of 1 s precludes us from studying any details of the pulses, but our very long observing time of almost 100 h or 1.4 million pulse periods is the longest thus far reported, rivalled only by the study by Singal & Vats (2012), who observed for just over 75 h. We have therefore collected very good statistics on the occurrence of these pulses; their properties are somewhat discontinuous with those reported before, and so we have either found a novel manifestation of GPs, or extended their range of properties. AARTFAAC is a radio transient survey project attached to the LOFAR, whose aim is to search for bright (tens of Jy), brief (seconds to minutes time-scale), transient events around 60 MHz (Prasad et al. 2016). We first found the brightest of these GPs as part of a blind, general survey (Kuiack et al. 2020) and then focused on the location of the pulsar for a deeper search, to unveil a large sample of GPs.

In Section 2, we describe our instrument, observations, and data processing methodology. We then report details of the observed pulses and sample statistics in Section 3. Next, in Section 4 we discuss evidence for the origin of the extremely bright GPs. Finally, we state our main conclusions in Section 5.

## 2 INSTRUMENT AND OBSERVATIONS

AARTFAAC is an all-sky radio telescope experiment, designed to survey the Northern Hemisphere for bright low-frequency transient events that evolve on time-scales from one second to several minutes (Prasad et al. 2016). It operates as a parallel back-end on LOFAR (van Haarlem et al. 2013). The radio signals from 288 inverted-V antennae in the central six low-band antenna (LBA) stations are split off digitally and then processed by dedicated correlators and calibration and imaging servers. The longest baseline is 300 m, resulting in an angular resolution of 60 arcmin. Since we use the dipoles individually (as opposed to LOFAR’s more standard practice of summing station dipoles to a beam), we retain the full dipole field of view, which is the full sky. However, due to ground-based radio frequency interference (RFI), and a significant drop in sensitivity towards the horizon, the detection region for transients is set to  $50^\circ$  from zenith (Decl. =  $52.9^\circ$ ), yielding a field of view of 4800 square degrees. This allows for the detection of 30–50 persistent sources, per second, across the field of view, with a significance of  $5\sigma$  ( $\sim 50$  Jy during typical conditions). The parameters used were settled upon by trial and error, and seek to balance the number of candidate sources while reducing noise (Kuiack et al. 2018).

We observe simultaneously with any regularly scheduled LOFAR-LBA observations, or during ‘filler time’ when no observation has been scheduled. Therefore, the archived data sets vary in length and are spaced irregularly in time, with LST-matched observations over



**Figure 1.** The rate of pulses detected over the course of our observations. The observation start time is marked with an orange dot; observations within 24 h are connected with a blue line. The rate varies greatly from day to day. The insert shows the high day-to-day variation in the rate of detected pulses.

consecutive days occurring rarely in the schedule. Although LBA and filler time observations represent a minority of the total scheduled LOFAR observations, the AARTFAAC archive has accumulated over 1100 h of observations between 2016 August and 2019 September. The complete set of observations used in this work consists of 96 h between 2016-09-07 and 2019-05-21 in which PSR B0950+08 was within the search area. The dates of these observations, as well as the rate of pulses detected per hour, are illustrated in Fig. 1.

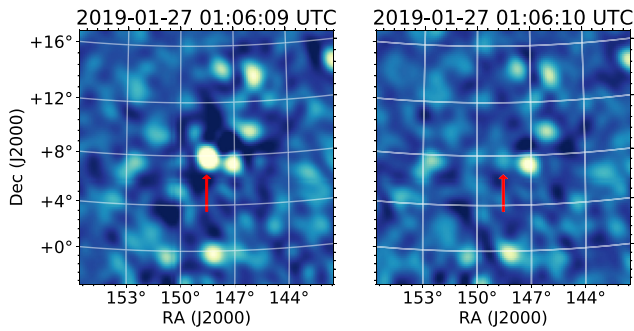
The data were recorded as 16 separate, 195.3 kHz bandwidth, calibrated subbands, with an integration time of 1 s. Visibility calibration is described fully in Prasad et al. (2014), but put simply, the brightest sources (the A team and the Sun) are subtracted with single component Gaussian models, and the diffuse Galactic emission is reduced by imposing a minimum baseline length of  $10\lambda$ .

The blind search for radio transients is done by first generating two all-sky images,  $1024 \times 1024$  pixels, each second, with a bandwidth of 1.5 MHz, centred at 58.3 and 61.8 MHz, near the peak of the LBA sensitivity. The images are then processed by the LOFAR Transient Pipeline (TraP; Swinbank et al. 2015, and references therein),<sup>2</sup> which ingests an image set from an AARTFAAC observation, performs source finding in each image, associates sources across images while calculating detection significance and variability statistics.

Most of the initially detected sources are spurious, and thus we set very strict thresholds for detection and filtering (for full details, see Kuiack et al. 2020). It helps to retain two 8-subband images, despite the sum of the two having better signal-to-noise ratio, since many spurious signals are narrow-band or strongly frequency dependent and can thus be rejected by comparing the two images. For the blind search, a viable source must be detected at  $8\sigma$  or more in one of the two images, and simultaneously at  $5\sigma$  or more in the other.

The flux scale is computed for each image individually by using a linear least squares fit of the instantaneous brightnesses of all detected sources in the AARTFAAC catalogue (Kuiack et al. 2018) to their catalogued flux values. The validity of the flux scaling is measured by comparing the extracted flux densities of the AARTFAAC catalogue sources to their catalogued value. There is no appreciable systematic offset ( $<1$  per cent), and the average uncertainty is 30 per cent,

<sup>2</sup><https://github.com/transientskptkp>



**Figure 2.** Example image stamps showing one of the brightest pulses detected, with a fluence of  $177 \pm 53$  Jy s (left), while the background in the next frame is  $34 \pm 25$  Jy s (right); these fluences are the integrated flux density over the 1 s exposure time of the image. The FWHM of the AARTFAAC PSF is 60 arcmin. The source immediately adjacent is 3C 227, a Seyfert 1 galaxy with a flux density of  $113.7 \pm 0.1$  Jy at 60 MHz, in the AARTFAAC catalogue.

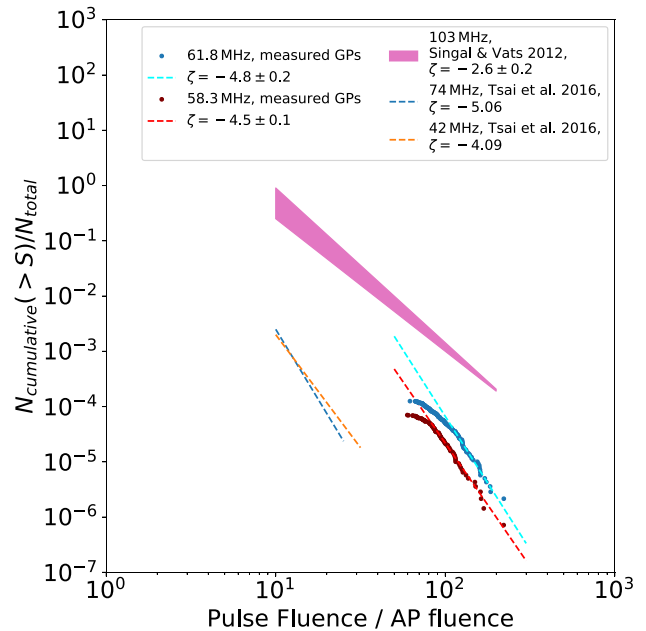
which is the normal value due to measurement error and ionospheric variability.

### 3 RESULTS

The signal from PSR B0950+08 was originally discovered blindly as a transient candidate when analysing the transient survey observation from 2018-11-01. Once we knew this source was producing transient events, we re-analysed the data at its location, lowering our detection threshold from 8 to  $5\sigma$ , because the number of random false positives goes down very much when searching only one pixel per image rather than one million. Additionally, observations stored in the visibility archive in which PSR B0950+08 was within the field of view were prioritized for processing until a sufficient sample of pulses were detected. In total 275 pulses were detected in 96 h of observations (Fig. 1); given the low declination of the pulsar, we never get more than 4 h of consecutive data from within our search region ( $Z < 50^\circ$ ). In the inset of the plot, we show the rate of GPs detected per hour during a week in early 2018 November. Clearly, very strong day-to-day variations in the rate are possible. The brightest pulse detected, with a fluence of  $177 \pm 53$  Jy s, is shown in Fig. 2.

#### 3.1 Pulse fluence distribution

The statistical distribution of all pulses detected thus far shows striking similarity, in power-law index, to the sample of GPs observed by Tsai et al. (2016) using the Long Wavelength Array (LWA), an instrument similar in design to AARTFAAC. Shown in Fig. 3 are the power-law indices of the GP fluence distribution at 42 and 74 MHz as measured by Tsai et al. (2016); they agree well with our results at 58.3 and 61.8 MHz. (Note that since they observed the GPs in beam-formed mode with high time resolution, comparing the fluences is non-trivial, see Section 4.1). However, the rate at which we are observing pulses is about five orders of magnitude too high, given that our pulses are an order of magnitude brighter, if we try to extrapolate both distributions to a common fluence. The much higher rate at which we observe GPs indicates that this is clearly not merely the high-fluence tail of the previously observed distribution. However, Tsai et al. (2015, 2016) observed for 36 h within a short-time period, so a very low point in the GP rate may have contributed to the difference. If we compare with the much longer term study of Singal & Vats (2012), who observed 141 30-min intervals over a period of 10 months we see a better agreement in rate, but a different

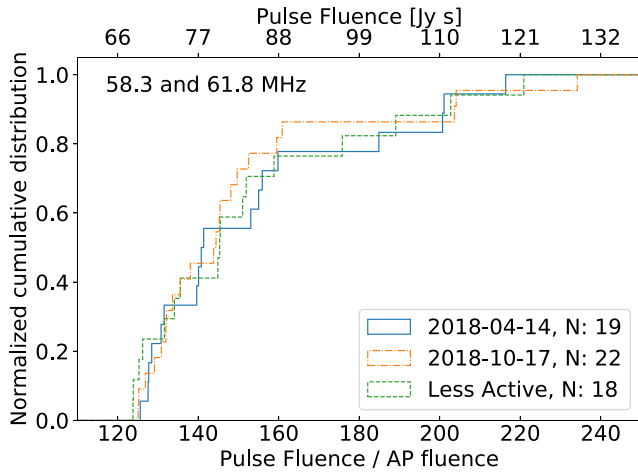


**Figure 3.** Cumulative fluence distributions from all of the pulses detected thus far in the AARTFAAC survey (red and blue dots), compared to estimations of the pulse fluence distributions fit at 74 and 42 MHz observed by LWA (dark blue and orange dashed lines), and at 103 MHz using the Rajkot radio telescope (purple). The power-law distributions are fit to pulses with fluence to AP fluence ratios greater than 150 at 61.8 MHz (light blue dashed line), and 120 at 58.3 MHz (red dashed line), to avoid the effect of incompleteness in the sample at low fluences. Clearly, the distributions detected by the three experiments are different, providing further evidence of the high degree of variability over time of the GPs of PSR B0950+08.

slope: the distribution of GP fluences they measure during the most active periods has a shallower slope and lower mean fluence, but an even higher GP rate on their most active days than we find on our most active days in the overlap (Fig. 3).

Furthermore, extrapolating the distribution fit by Tsai et al. (2016) to the pulse to AP fluence ratio of 1 yields a  $N_{\text{cumulative}}(>S)/N_{\text{total}} \approx 1$ . This indicates that the pulses reported there could be drawn from a single distribution that extends continuously all the way to the normal pulse fluences, similar to the cases reported by Kazantsev & Potapov (2018). By contrast, extrapolating the pulse fluence distribution observed by AARTFAAC to the AP fluence is not possible, it would require far more GPs than there are pulse periods in our data set. The same is true for the data from Rajkot (Singal & Vats 2012), although a bit less so due to the shallower slope. This motivates us to see whether we can also see evidence for a shallower slope at lower fluences or a dependence of the slope on the GP rate.

To start with the latter, we compare the fluence distributions of three periods: the two most active days, 2018-04-14 and 2018-10-17, as well as a collection of pulses from the less active days. We compare them using two-sample KS tests, illustrated in Fig. 4. In order to ensure that variations in the sensitivity across multiple observations are not a confounding factor in the shape of the distributions, first a completeness limit was applied. We only compare pulses with a fluence greater than 68 Jy s, occurring when the detection limit was less than 68 Jy s. Fig. 4 shows the similarity of the three samples. This is made more quantitative using two-sample KS tests: the null hypothesis that the samples are drawn from the same distribution is not rejected when comparing any two of the three distributions. But of course the samples are small, so only large variations in the slope



**Figure 4.** The cumulative-fluence distributions of pulses from the two observations with the highest activity as well as a collected sample of pulses from observations when the pulsar appears less active.

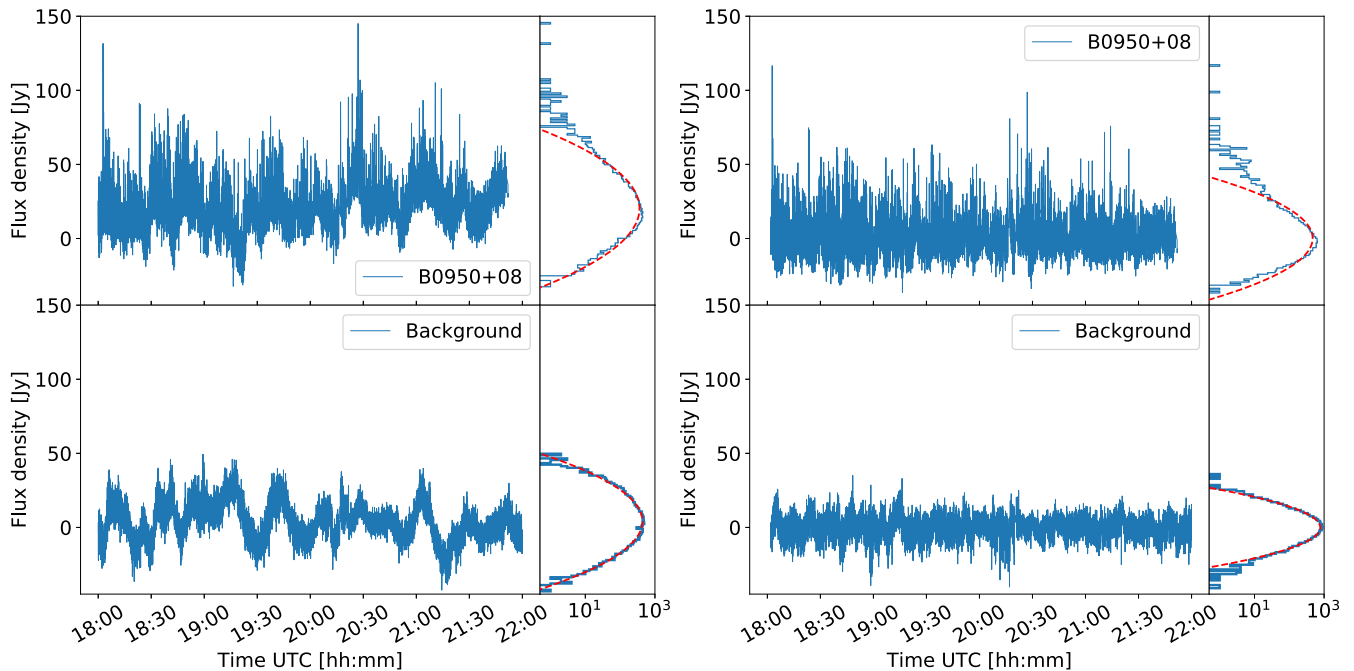
are excluded by this test. In the next subsection, we describe how we extended the study to fainter GPs.

### 3.1.1 Lower fluence pulses and their distribution

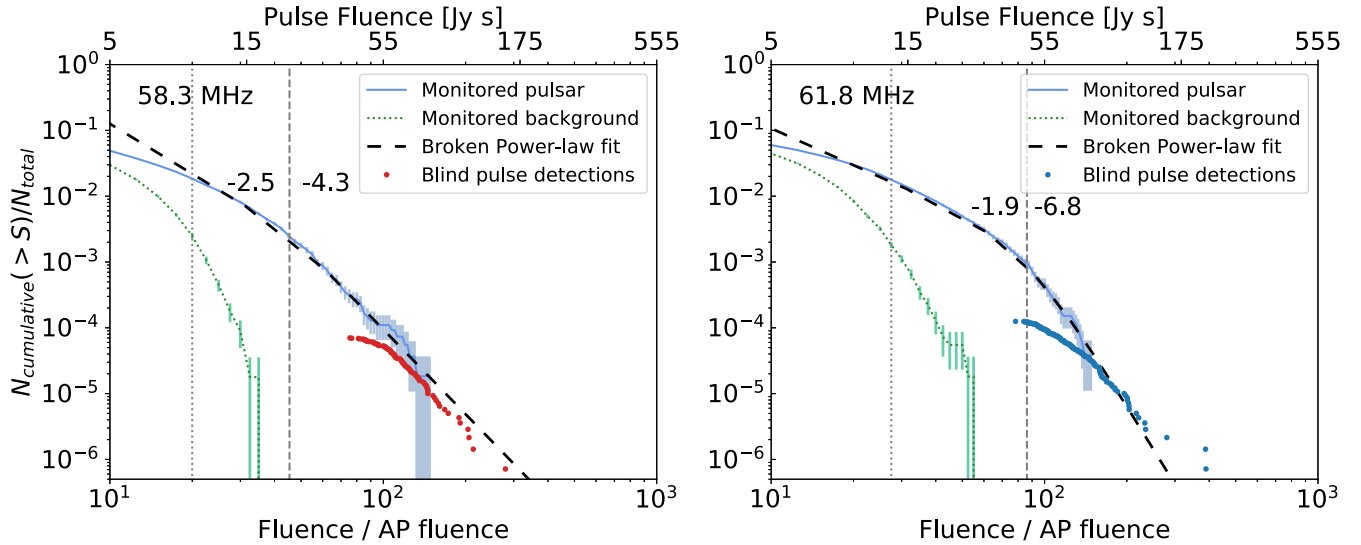
A significant cause of the high detection threshold applied so far is the fact that the  $\sim 30$  per cent ionospheric variations of the source fluxes contribute to the rms. We measure and therefore raise the detection threshold. However, as noted above, these variations occur on a rather slow time-scale of 10–15 min compared to the 1 s time-scale of the GPs. Therefore, we can try to establish a lower noise threshold by subtracting the ionospheric variations through low-pass

filtering of the light curve. We also do this for some nearby locations where there is no bright source, in order to see the effect of this process on the noise alone. The observation containing the most active time period was reprocessed with the TraP, resulting in a fully sampled light curve from 18:00 to 22:00 UTC on 2018-04-14, when PSR B0950+08 was within the detection region of the image ( $50^\circ$  from zenith). This resulted in the light curves illustrated in Fig. 5. The light curve shown in the bottom left-hand panel gives the forced flux measurements at a location on the sky a few beam widths away from PSR B0950+08, where no source is visible to AARTFAAC. We determine the ionospheric variation by modelling it with a rolling boxcar mean with a width of 2 min. This is short enough to remove the longer term variability, and long enough that GPs do not significantly affect the rolling mean. The result of subtracting the boxcar mean is shown in the bottom right-hand panel of Fig. 5. One can indeed see from the histograms attached to the right of each panel that the rms goes down considerably and that the intensity histogram is very well fit by a Gaussian after the filtering. In the top panels, we show the result of the same procedure applied to the location of PSR B0950+08. Its background-subtracted light curve (the top right-hand panel of Fig. 5) now clearly shows a great many more GPs, and the intensity histogram shows a Gaussian with the same width as the background panel below, plus a highly skewed tail due to the many more GPs than previously detected.

In Fig. 6, we show the depth to which AARTFAAC is able to probe the fluence distribution of PSR B0950+08 emission after this careful accounting of the background noise. In each panel, we depict the sample of GPs detected in the transient candidate data base via the blind search criteria, compared to the distribution of flux measurements made every second at the location of the pulsar and the nearby background. We find that we can reach about five times lower fluences and can indeed see a break to a shallower slope at low fluence. Detailed parameters of a smoothly broken power law



**Figure 5.** Fully sampled light curve of PSR B0950+08 (top) and a nearby background location (bottom). Both raw light curves (left) show correlated noise variations that have been removed with a 2 min boxcar rolling mean (right). The red dashed lines show a Gaussian fit to the flux density measurements from each light curve. These fits show how well the background is modelled by a Gaussian, whereas the pulsar shows an obvious over abundance of high-flux density measurements.



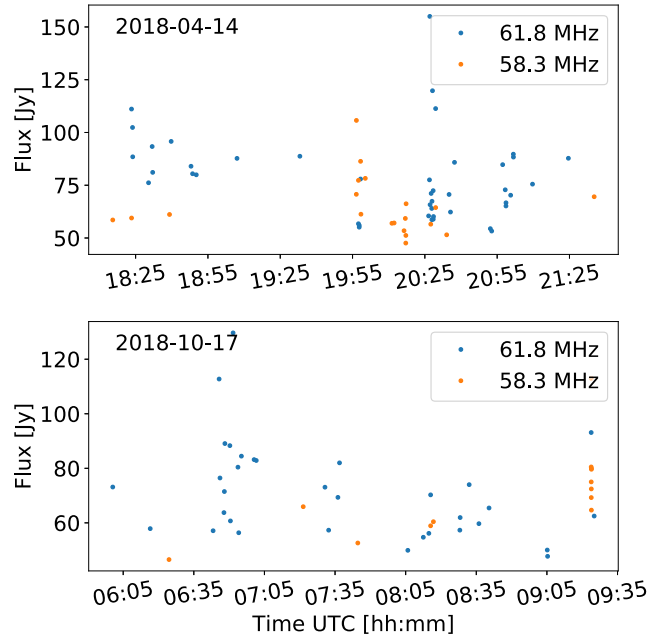
**Figure 6.** Extending the distribution of GPs to lower fluences using the monitoring measurements from Fig. 5, for 58.3 MHz (left) and 61.8 MHz (right). As in Fig. 3, the horizontal axis is normalized to the AP fluence, and the vertical axis to the total number of rotation periods in the measured time interval. The dots show the pulses detected in the blind search, copied from Fig. 3. The pulse fluence distribution from the lower-threshold search is shown in light blue (with Poisson error bars) and the background fluence distribution at the same time is shown in green (again with Poisson error bars). The black dashed line shows a broken power law to the overall pulse fluence distribution, with the grey vertical dashed line indicating the location of the break, and the numbers to either side of it the asymptotic low- and high-fluence power-law indices. The grey dotted line shows the fluence above which the background contributes less than 10 per cent to the distribution.

are not very well constrained, but we show illustrative fits to the data that indicate a break around a fluence to AP fluence ratio of about 45 (86) at 58.3 MHz (61.8 MHz), and slopes below the break that are comparable to those measured by Singal & Vats (2012) at 103 MHz.

### 3.2 Pulse clustering

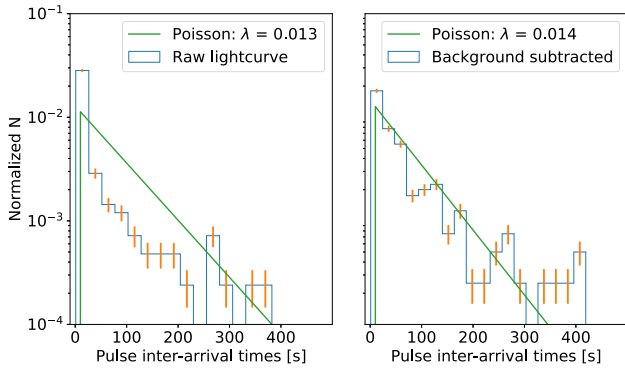
To investigate our impression that the GPs vary greatly not only between days, but also come in clusters within a given observation, we perform some formal tests of clustering on the GP time series within the two most active days. The clustering of time series can be measured in two ways, both by comparing to what would be expected from a Poisson process. First, we can compute the so-called dispersion index, the ratio of the variance to the mean of binned arrival times. A dispersion index of 1 is expected for a Poisson process, less than 1 indicates overly regular data, and greater than 1 indicates clustered data. This has the drawback of being dependent on the width of the bins used, but for all reasonably sized bins (30 s to 10 min) the dispersion index is greater than 1 during the two most active days (Fig. 7), indicating a greater tendency for GPs to appear in clusters. Secondly, the clustering can be measured by comparing the pulse inter-arrival times, the interval of time between successive GPs. For a Poisson process the distribution of inter-arrival times should be exponential. For both days, the distribution of inter-arrival times was not well fit by an exponential distribution; there was a greater number of short inter-arrival times, illustrated in the left-hand panel of Fig. 8.

However, as can be seen in the top left-hand panel of Fig. 5, where we show the full light curve for 2018-04-14, the brightest GPs follow the modulation due to the ionosphere, and this may contribute to the detected clustering. In order to examine, this we re-perform the Poissonian test on the data with the background modulation filtered out. This completely eliminates the clustering: the corrected distribution of pulse inter-arrival times is shown in the



**Figure 7.** Pulse arrival times, coloured by the detection frequency from the two most active days. The dispersion index measured for a range of bin time bin widths is greater than 1, indicating that the pulse behaviour is clustered more than expected from a Poisson process.

right-hand panel of Fig. 8, and follows an exponential distribution, in good agreement with Poisson statistics. Since the day-to-day mean sensitivity variations are much smaller, the large variations in daily rates cannot be explained in the same way as due to sensitivity, and so we conclude that the GP rate of PSR B0950+08 is highly variable on all time-scales from days to years, but not on a time-scale of hours.



**Figure 8.** Histograms of the inter-arrival times for pulses above fluence 50 Jy s. Counting uncertainty is the square root of the number of counts. The left-hand panel shows the distribution for the raw light curve, and the right for the background subtracted light curve. The raw light curve is clustered, whereas once the background is removed, the distribution is exponential decay, consistent with a Poisson process.

### 3.3 Pulse spectral behaviour

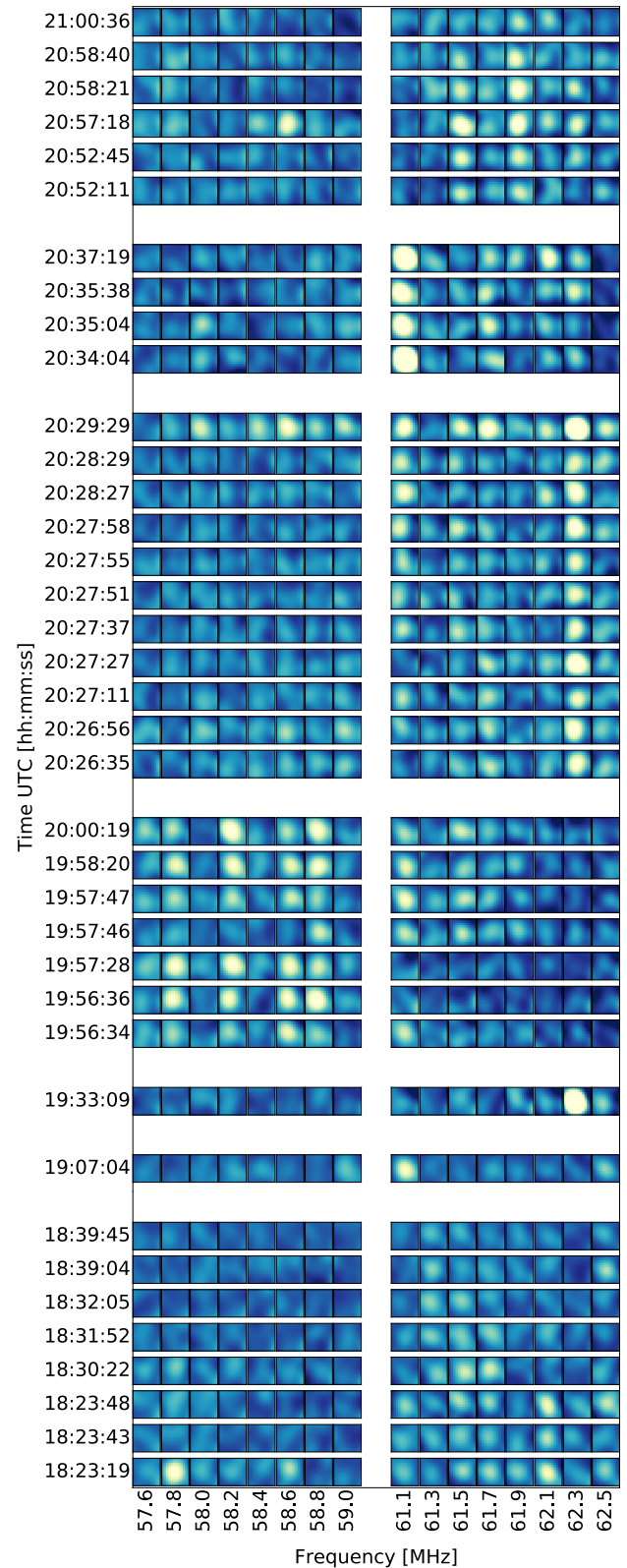
In order to inspect the spectral structure of the GPs, we re-imaged all 195.3 kHz subbands separately. The observation used was recorded on 2018-04-14; this date was chosen because it contained the largest number of detected pulses. All of the pulses detected in the blind search mode are plotted in the top panel of Fig. 7. 40 of the brightest pulses spanning 18:23 to 21:01 UTC are illustrated in Fig. 9. The image stamps have a consistent colour scaling, and provide a qualitative comparison of the relative flux in each frequency channel. The stamps are separated vertically according to the clusters of time, and horizontally in the two consecutive sequences of subbands. Interestingly, we find that the spectra of the pulses are highly structured and variable, with many narrow-band pulses, and with pulses close in time tending to have similar structure.

## 4 DISCUSSION

### 4.1 Comparing GP fluences properly

Because our integration time is four pulse periods long, one might worry that our high fluences are caused by the fact that we sum the fluence of multiple pulses. This does seem unlikely, however, given that the GPs are still relatively rare (about 1 per 10 000 pulses for the brightest blindly detected ones). So two GPs occurring in one second by random chance will be very rare, and also there is no prior evidence that GPs are strongly clustered on the shortest time-scales. We can also call in the help of dispersion: the DM for PSR B0950+08 is  $3.0 \text{ pc cm}^{-3}$ , which leads to a dispersion delay between the two AARTFAAC images, centred at 58.3 and 61.8 MHz, of 0.4 s. Since the rotation period is 0.253 s and the pulse duration only 25 ms, dispersion should move the flux of a GP completely from one time bin to the next if the fluence increase is due to a single GP, and only partly if the fluence increase is often due to multiple GPs in one time bin. Pulse signals arriving in the higher frequency image before the lower frequency image have been observed in a number of cases, and the split is always complete, so we can be confident that the majority of measured GPs are individual pulses.

Because some observations have resolved the individual pulses in time and report the flux densities, whereas others – in fact most – do not resolve the GPs, we must be careful to compare all the results to ours on a common scale. For some, such as the long series



**Figure 9.** Time/frequency plot of the brightest pulses from 2.5 h on 2018-04-14. It is clear that the spectral structure is not the result of DISS, which has a bandwidth of  $\approx 65$  kHz and would average out over only a few of the 195.3 kHz subbands.

**Table 1.** Comparison of the average pulse (AP) and giant pulse (GP) parameters, including pulse fluence distribution power-law index, across the different observations.

Freq. (MHz)	Period-averaged flux (Jy)	AP fluence (Jy s)	Max GP fluence (Jy s)	Index	Source
112	2	0.51	81.2	−1.5	Smirnova (2012)
103	3	0.76	228	−2.6 ± 0.2	Singal & Vats (2012)
74	2.4	0.61	14.6	−5.06	Tsai et al. (2016)
61.8	2.6 <sup>a</sup>	0.66 <sup>a</sup>	155	−4.8 ± 0.2	This work
58.3	2.6 <sup>a</sup>	0.66 <sup>a</sup>	177	−4.5 ± 0.1	This work
42	2.8	0.71	17.0	−4.09	Tsai et al. (2016)
39	1.5	0.38	10.7	−4.7	Tsai et al. (2015)

<sup>a</sup>Values are calculated using linear interpolation of the other parameters.

by Singal & Vats (2012), this was fairly easy because even though they report their results in flux density, they already scale the GPs to the AP, and because they resolve neither this is equivalent to scaled fluences. The same holds for the temporally unresolved GPs at 112 MHz (Smirnova 2012), and AARTFAAC. The LWA papers (Tsai et al. 2015, 2016), to which we also compare in Table 1 and Fig. 3, resolve the pulse profiles of the GPs. We therefore have to translate their flux values to fluences for comparison. The maximum GP fluences, period-averaged flux and GP fluence distribution power-law indices, are given for comparison in Table 1.

#### 4.2 Cause of widely differing GP fluence distributions

Since the brightness also of the AP of PSR B0950+08 is known to vary by about a factor of 10 (Pilkington et al. 1968; Gupta et al. 1993; Singal & Vats 2012) over time-scales that are in good agreement with the cause being refractive interstellar scintillation, we should address whether possibly some of what is seen here could be caused by magnification and propagation effects rather than intrinsic variability of the pulsar.

##### 4.2.1 Magnification due to interstellar propagation

Without being able to measure the AP during each observation, we cannot determine the ratio between the GPs we observe and the AP from 1 d to the next. However, both our own observations and those of Singal & Vats (2012) show that the fluence distribution of GPs changes slope to fainter values, and thus we should expect that if the rate varies due to the entire distribution being magnified, carrying more GPs across our detection threshold, we should see the slope of the fluence distribution flatten from about −5 to −2.5 when the rates are highest. However, when we tested this we saw no change of the shape between epochs of low and high rates (Fig. 4) and so we can exclude interstellar magnification as a significant factor. The fact that the GP rate can change strongly between consecutive days, which is too fast for RISS, points to that same conclusion, as does the fact that Tsai et al. (2015, 2016) observed a steep distribution slope at much lower fluences. Of course, a direct way to test this will be to observe simultaneously with a much more sensitive instrument that can also detect the AP and measure its flux directly; it will be difficult to get the large amount of monitoring time required on such a large telescope, but one could trigger a sensitive observation based on the alert of a high GP rate from AARTFAAC.

In addition to RISS, the pulsar signal is also diffracted by the interstellar medium during propagation (DISS), which causes variations on much shorter time-scales and over possibly narrow bandwidths. Bell et al. (2016) recently measured a DISS bandwidth of 4.1 MHz

and time-scale of 28.8 min at 154 MHz using the MWA. These values agree well with a previous study at 50 MHz by Phillips & Clegg (1992), indicating the dynamics of the interstellar medium have been stable over the last three decades. This means we can use the fairly common, though not universal scaling relations for DISS bandwidth  $\Delta\nu_d \propto \nu^{4.4}$ , and time-scale  $\Delta\tau_d \propto \nu^{1.2}$ . At 60 MHz, this predicts a bandwidth of 65 kHz and time-scale of 10.3 min. Also, Smirnova (2006) measure a decorrelation bandwidth of 200 kHz at 111 MHz for PSR B0950+08, which extrapolates to 15 kHz at 60 MHz; even with the somewhat shallower scaling suggested by a detailed study of the scintillation in the sightline by Smirnova et al. (2014), we still get to only 32 kHz width. This time-scale agrees fairly well with the time-scale over which we see the spectral energy distribution across the 16 AARTFAAC frequency bands change on 2018 April 14 (Fig. 9).

However, the spectral structures we see mostly have a rather larger width of a fair fraction of a MHz, and only occasionally are as narrow as 200 kHz, so this fits the DISS picture rather less well. This makes it more likely to us that the structures present in Fig. 9 are intrinsic, rather than DISS scintels, but it is hard to be completely sure of this.

##### 4.2.2 Intrinsic emission

Since we conclude that the majority of the effects we observe, and differences with other studies, are intrinsic to PSR B0950+08, we should compare it with the behaviour of other known GP pulsars.

First, we look at other examples of GP fluence distributions. Zhuravlev et al. (2013) show a break in the power law between the cumulative probability distributions of GPs from B1937+21. The index changes from  $-1.6 \pm 0.1$  at lower flux levels to  $-2.4 \pm 0.1$  at the higher flux tail. This is similar to the behaviour observed by Popov & Stappers (2007) who also show that GPs from the Crab pulsar have a break in the power law, the higher flux tail being steeper. Oddly, the opposite was observed in the distribution of GPs observed from the same pulsar by McKee et al. (2019) where the distribution flattens significantly, from  $-3.48 \pm 0.04$  to  $-2.10 \pm 0.02$ , at the high flux tail. When searching for GPs, Kazantsev & Potapov (2018) found that the typical pulse energy distribution for B0329+54 was clearly best fit by a broken power law, despite not detecting any GPs from this pulsar. It was the only pulsar monitored that exhibited this behaviour.

Next, we look at the structure in spectra of GPs and other pulsar emission. The frequency structure of the individual pulses shown in Fig. 9 is similar in character to the single pulse spectra shown in some other studies of GPs from different pulsars at different frequencies. This sparse comb-like structure is observed from B1957+20 between 338 and 324 MHz (Main et al. 2017), from B1821–24A between 720



and 2400 MHz (Bilous et al. 2015), and from B1937+21 between 1332 and 1450 MHz (McKee et al. 2019). Singal & Vats (2012) also reported that during a simultaneous observation of PSR B0950+08 between Rajkot (103 MHz) and WSRT (297 MHz) they did not see the same GPs in the different bands simultaneously, and even noted decorrelation within the 10 MHz WSRT band. Popov & Stappers (2003) similarly report that for a 3 h simultaneous observation of B1937+21 at 1.4 and 2.3 GHz, GPs were found in both bands, but none were simultaneous between them. Also, the Crab pulsar GPs (e.g. Hankins et al. 2016) have very rich frequency structure. Whether this kind of structure is also present in normal pulses is not well known, since these are usually too faint to make individual spectra of. The APs are spectrally smooth, but of course they are by definition averaged over many individual pulses.

Lastly, the recent radio outburst from the magnetar RXTE J1810–197 allowed for the spectral properties to be studied (Maan et al. 2019). The bursts exhibited high spectral modulation on frequency scales much greater than the scintillation bandwidth, which was then observed to weaken and disappear in the months after the initial outburst. Given the very different nature of this neutron star, a more detailed comparison with PSR B0950+08 using more sensitive instruments could be very interesting.

### 4.3 Pulse rate discrepancy

Lastly, we discuss highly variable GP rate between the different studies in more detail. Of the 96 h, or 42 observations, which we have used to search for detectable pulses, 18 observations, totalling 37 h, contained no detectable pulses. Assuming the activity level is typical this indicates that roughly 40 per cent of observations could yield no pulses at this extreme fluence level. However, in 21 of our observations the rate of detected pulses was greater than one per hour. Therefore, if this extreme activity is equally likely on any given day, the LWA surveys, whose observations were composed of 6-h blocks over 5 d (Tsai et al. 2015), then 4-h blocks over three consecutive days (Tsai et al. 2016), should have observed pulses of a similar magnitude. There is only a 6 per cent chance to randomly select 8 observations that contain no pulses.

However, the LWA observations were not randomly selected; they took place over consecutive days. This could indicate that the activity level is clustered on time-scales of weeks or greater. Unfortunately, due to the irregular distribution of our observations we are unable to determine the degree to which GP activity is clustered over time-scales of weeks or months. Recently, we did a follow-up study utilizing an additional 26 h of observations, simply monitoring the location of PSR B0950+08 with a  $5\sigma$  detection threshold, daily from 2019 September 1–8, as well as the 10, 11, 14, 15, and 18. We found no GPs at all in these data. This indicates that there are long periods of quiescence between storms of extreme pulse activity. Long periods of quiescence, or low GP detection rates are consistent with the long-term study by Singal & Vats (2012), who found that 99 per cent of all pulses were detected during 35 of the 141 d.

There is however one cautionary comment to make: extremely bright narrow-band signals will often be flagged as RFI, unless they are clearly dispersed at a sizeable dispersion measure. But unhelpfully, the DM of PSR B0950+08 is very low, and so care should be taken not to discard the brightest GPs via the RFI filtering.

## 5 CONCLUSIONS

We report on the observation of a sample of extremely high fluence GPs from PSR B0950+08. These pulses achieve a fluence brighter

than any which have previously been observed at similarly low radio frequencies. Earlier studies show different distributions of GP fluences from this source, either with a much lower rate or with a different distribution shape. Also within our study we find that the rate of GPs is typically constant and unclustered within the few hours of a single observation, but varies by more than an order of magnitude from day to day; it was even seen to go to zero for the better part of a month.

By reprocessing an observation during a very active period, monitoring the position of the pulsar, and subtracting background variability, we were able to extend the sample of detectable GPs to a factor of 5 lower fluence. This revealed that the fluence distribution follows a broken power law, with the break occurring around a few tens of Jy s. We also found that the shape of the bright end of this distribution was consistent between observations spanning several months, as well as a range in extreme pulse activity.

We were able to exclude that the bulk of the fluence variations are due to interstellar propagation and magnification effects, and therefore must be attributed to intrinsic behaviour of the pulsar emission. The fine structure in frequency we see also seems more likely to be intrinsic, and is also seen in the GPs of other pulsars, but we cannot strongly exclude that refractive interstellar scintillation plays a role in that.

## ACKNOWLEDGEMENTS

AARTFAAC development and construction was funded by the ERC under the Advanced Investigator grant no. 247295 awarded to Prof. Ralph Wijers, University of Amsterdam. This work was funded by the Netherlands Organisation for Scientific Research under grant no. 184.033.109. We thank The Netherlands Institute for Radio Astronomy (ASTRON) for support provided in carrying out the commissioning observations. AARTFAAC is maintained and operated jointly by ASTRON and the University of Amsterdam.

We would also like to thank the LOFAR science support for their assistance in obtaining and processing the data used in this work. We use data obtained from LOFAR, the Low Frequency Array designed and constructed by ASTRON, which has facilities in several countries, that are owned by various parties (each with their own funding sources), and that are collectively operated by the International LOFAR Telescope (ILT) foundation under a joint scientific policy.

Additionally, we express gratitude to Joeri van Leeuwen, Anya Bilous, Jason Hessels, Joel Weisberg, and Nina Gusinskaia for their helpful comments on this article, as well as Joanna Rankin and Mathew Bales for invaluable discussion. And to Jean-Mathias Griessmeier and Louis Bondonneau for sharing illuminating data on the typical pulse behaviour of PSR B0950+08.

This research made use of ASTROPY,<sup>3</sup> a community-developed core PYTHON package for Astronomy (Astropy Collaboration et al. 2013; Price-Whelan et al. 2018), as well as the following: KERN (Molenaar & Smirnov 2018), PANDAS (McKinney 2010), NUMPY (van der Walt, Colbert & Varoquaux 2011), SCIPY (Virtanen et al. 2020), and CORNER.PY (Foreman-Mackey 2016). Accordingly, we would like to thank the scientific software development community, without whom this work would not be possible.

<sup>3</sup><http://www.astropy.org>

**DATA AVAILABILITY**

The data underlying this article can be shared on reasonable request to the corresponding author.

**REFERENCES**

- Astropy Collaboration et al., 2013, *A&A*, 558, A33  
 Bell M. E. et al., 2016, *MNRAS*, 461, 908  
 Bilous A. V., Pennucci T. T., Demorest P., Ransom S. M., 2015, *ApJ*, 803, 83  
 Briskin W. F., Benson J. M., Goss W. M., Thorsett S. E., 2002, *ApJ*, 571, 906  
 Cairns I. H., 2004, *ApJ*, 610, 948  
 Cairns I. H., Johnston S., Das P., 2004, *MNRAS*, 353, 270  
 Cole T. W., 1970, *Nature*, 227, 788  
 Cole T. W., Hesse H. K., Page C. G., 1970, *Nature*, 225, 712  
 Foreman-Mackey D., 2016, *J. Open Source Softw.*, 24  
 Gupta Y., Rickett B. J., Coles W. A., 1993, *ApJ*, 403, 183  
 Gwinn C. R., Taylor J. H., Weisberg J. M., Rawley L. A., 1986, *AJ*, 91, 338  
 Hankins T. H., 1971, *ApJ*, 169, 487  
 Hankins T. H., Cordes J. M., 1981, *ApJ*, 249, 241  
 Hankins T. H., Kern J. S., Weatherall J. C., Eilek J. A., 2003, *Nature*, 422, 141  
 Hankins T. H., Eilek J. A., Jones G., 2016, *ApJ*, 833, 47  
 Hewish A., Bell S. J., Pilkington J. D. H., Scott P. F., Collins R. A., 1968, *Nature*, 217, 709  
 Johnston S., Romani R. W., 2002, *MNRAS*, 332, 109  
 Johnston S., van Straten W., Kramer M., Bailes M., 2001, *ApJ*, 549, L101  
 Virtanen P. et al., 2020, *Nature Methods*, 17, 261  
 Kazantsev A. N., Potapov V. A., 2018, *Res. Astron. Astrophys.*, 18, 097  
 Kuiack M., Huizinga F., Molenaar G., Prasad P., Rowlinson A., Wijers R. A. M. J., 2018, *MNRAS*, 482, 2502  
 Kuiack M. J., Wijers R. A. M. J., Shulevski A., Rowlinson B. A., Huizinga F., Molenaar G., Prasad P., in prep.  
 Maan Y., Joshi B. C., Surnis M. P., Bagchi M., Manoharan P. K., 2019, *ApJ*, 882, L9  
 Main R., van Kerkwijk M., Pen U.-L., Mahajan N., Vanderlinde K., 2017, *ApJ*, 840, L15  
 Manchester R. N., Hobbs G. B., Teoh A., Hobbs M., 2005, *AJ*, 129, 1993  
 McKee J. W. et al., 2019, *MNRAS*, 483, 4784  
 McKinney W., 2010, in van der Walt S., Millman J., eds, *Proceedings of the 9th Python in Science Conference*, p. 51  
 Molenaar G., Smirnov O., 2018, *Astron. Comput*  
 Phillips J. A., Clegg A. W., 1992, *Nature*, 360, 137  
 Pilia M. et al., 2016, *A&A*, 586, A92  
 Pilkington J. D. H., Hewish A., Bell S. J., Cole T. W., 1968, *Nature*, 218, 126  
 Popov M. V., Stappers B., 2003, *Astron. Rep.*, 47, 660  
 Popov M. V., Stappers B., 2007, *A&A*, 470, 1003  
 Prasad P., Wijnholds S. J., Huizinga F., Wijers R. A. M. J., 2014, *A&A*, 568, A48  
 Prasad P. et al., 2016, *J. Astron. Instrum.*, 5, 1641008  
 Price-Whelan A. M. et al., 2018, *AJ*, 156, 123  
 Singal A. K., Vats H. O., 2012, *AJ*, 144, 155  
 Smirnova T. V., 2006, *Astron. Rep.*, 50, 915  
 Smirnova T. V., 2012, *Astron. Rep.*, 56, 430  
 Smirnova T. V. et al., 2014, *ApJ*, 786, 115  
 Staelin D. H., Reifenshtein, Edward C. I., 1968, *Science*, 162, 1481  
 Swinbank J. D. et al., 2015, *Astron. Comput.*, 11, 25  
 Tsai J.-W. et al., 2015, *Astron. J.*, 149, 65  
 Tsai J.-W., Simonetti J. H., Akukwe B., Bear B., Gough J. D., Shawhan P., Kavic M., 2016, *AJ*, 151, 28  
 van der Walt S., Colbert S. C., Varoquaux G., 2011, *Comput. Sci. Eng.*, 13, 22  
 van Haarlem M. P. et al., 2013, *A&A*, 556, A2  
 Wang N., Manchester R. N., Johnston S., Rickett B., Zhang J., Yusup A., Chen M., 2005, *MNRAS*, 358, 270  
 Zhuravlev V. I., Popov M. V., Soglasnov V. A., Kondrat'ev V. I., Kovalev Y. Y., Bartel N., Ghigo F., 2013, *MNRAS*, 430, 2815

This paper has been typeset from a  $\text{\TeX}/\text{\LaTeX}$  file prepared by the author.