



UvA-DARE (Digital Academic Repository)

Apparent breeding success drives long-term population dynamics of a migratory swan

Nuijten, R.J.M.; Vriend, S.J.G.; Wood, K.A.; Haitjema, T.; Rees, E.C.; Jongejans, E.; Nolet, B.A.

DOI

[10.1111/jav.02574](https://doi.org/10.1111/jav.02574)

Publication date

2020

Document Version

Final published version

Published in

Journal of Avian Biology

License

CC BY

[Link to publication](#)

Citation for published version (APA):

Nuijten, R. J. M., Vriend, S. J. G., Wood, K. A., Haitjema, T., Rees, E. C., Jongejans, E., & Nolet, B. A. (2020). Apparent breeding success drives long-term population dynamics of a migratory swan. *Journal of Avian Biology*, 51(11), [e02574]. <https://doi.org/10.1111/jav.02574>

General rights

It is not permitted to download or to forward/distribute the text or part of it without the consent of the author(s) and/or copyright holder(s), other than for strictly personal, individual use, unless the work is under an open content license (like Creative Commons).

Disclaimer/Complaints regulations

If you believe that digital publication of certain material infringes any of your rights or (privacy) interests, please let the Library know, stating your reasons. In case of a legitimate complaint, the Library will make the material inaccessible and/or remove it from the website. Please Ask the Library: <https://uba.uva.nl/en/contact>, or a letter to: Library of the University of Amsterdam, Secretariat, Singel 425, 1012 WP Amsterdam, The Netherlands. You will be contacted as soon as possible.

UvA-DARE is a service provided by the library of the University of Amsterdam (<https://dare.uva.nl>)

JOURNAL OF AVIAN BIOLOGY

Article

Apparent breeding success drives long-term population dynamics of a migratory swan

Rascha J. M. Nuijten*, Stefan J. G. Vriend*, Kevin A. Wood, Trinus Haitjema, Eileen C. Rees, Elke Jongejans and Bart A. Nolet

R. J. M. Nuijten (<https://orcid.org/0000-0002-1469-4328>) ✉ (r.nuijten@nioo.knaw.nl), S. J. G. Vriend (<https://orcid.org/0000-0002-9006-5988>) and B. A. Nolet (<https://orcid.org/0000-0002-7437-4879>), Dept of Animal Ecology, Netherlands Inst. of Ecology, Wageningen, the Netherlands. – SJGV and E. Jongejans (<https://orcid.org/0000-0003-1148-7419>), Dept of Animal Ecology and Physiology, Radboud Univ., Nijmegen, the Netherlands. – SJGV also at: Centre for Biodiversity Dynamics, Dept of Biology, Norwegian Univ. of Science and Technology, Trondheim, Norway. – K. A. Wood (<https://orcid.org/0000-0001-9170-6129>) and E. C. Rees (<https://orcid.org/0000-0002-2247-3269>), Wildfowl & Wetlands Trust, Slimbridge, Gloucestershire, UK. – T. Haitjema, Postkast 104, Haapsalu, Estonia. – B. A. Nolet, Dept of Theoretical and Computational Ecology, Inst. for Biodiversity and Ecosystem Dynamics, Univ. of Amsterdam, Amsterdam, the Netherlands.

Journal of Avian Biology

2020: e02574

doi: 10.1111/jav.02574

Subject Editor:

Ronald C. Ydenberg

Editor-in-Chief: Thomas Alerstam

Accepted 6 September 2020



The ability of a species to adapt to environmental change is ultimately reflected in its vital rates – i.e. survival and reproductive success of individuals. Together, vital rates determine trends in numbers, commonly monitored using counts of species abundance. Rapid changes in abundance can give rise to concern, leading to calls for research into the biological mechanisms underlying variations in demography. For the northwest European population of Bewick's swan *Cygnus columbianus bewickii*, there have been major changes in the population trends recorded during nearly five decades of monitoring (1970–2016). The total number of birds increased to a maximum of ca 30 000 in 1995 and subsequently decreased to about 18 000 individuals in 2010. Such large fluctuation in population numbers is rare in long-lived species and understanding the drivers of this population change is crucial for species management and conservation. Using the integrated population model (IPM) framework, we analysed three demographic datasets in combination: population counts, capture–mark–resightings (CMR) and the proportion of juveniles in winter over a period of ~50 years. We found higher apparent breeding success in the years when the population had a positive growth rate compared to years with a negative growth rate. Moreover, no consistent trend in adult and yearling survival, and an increasing trend in juvenile survival was found. A transient life-table response experiment showed that apparent breeding success and adult survival contributed most to the variation in population trend. We explored possible explanatory variables for the different demographic rates and found a significant association between juvenile survival both with the water level in lakes during autumn migration, which affects food accessibility for the swans, and with summer temperatures. Such associations are important for understanding the dynamics of species with fluctuating population sizes, and thus for informing management and conservation decisions.

Keywords: Bewick's swan, integrated population model, capture-mark-recapture, environmental drivers, transient life table response experiment



www.avianbiology.org

© 2020 Nordic Society Oikos. Published by John Wiley & Sons Ltd

* Shared first authorship, both contributed equally to this paper.

This is an open access article under the terms of the Creative Commons Attribution License, which permits use, distribution and reproduction in any medium, provided the original work is properly cited.

Introduction

In our rapidly changing world, many species need to be able to adapt promptly to environmental change if they are to continue to be viable (Williams et al. 2008, Chen et al. 2011, Hoffmann and Sgró 2011). This is particularly challenging for migratory species, because of the potential mismatch between the (rates of) change in conditions encountered by individuals at sites used along their migration routes (Visser et al. 2009, Bairlein 2016). The ability of a species to adapt is ultimately reflected in its vital rates (i.e. survival and reproductive success), which together determine a population's increase or decline. Understanding how species respond and how population trends differ under varying environmental conditions therefore is of great interest, from both a scientific and a conservation perspective (Opperl et al. 2014).

Population counts often form the basis for conservation and management strategies in an attempt to conserve or control, either positively or negatively, the abundance of a species. However, for many species, their conservation status remains uncertain, despite large-scale and labour-intensive monitoring programmes (Tempel et al. 2014). This may reflect the elusiveness of the species, or its slow life-history traits which would require long-term monitoring to determine the reasons for population change (Cardillo et al. 2005), making it difficult to assess its status effectively. Fully understanding the dynamics of these populations can be challenging (Robinson et al. 2014), although analysing the underlying vital rates for such species can provide valuable insights (Lebreton and Clobert 1991, Besbeas et al. 2002, Katzner et al. 2006). Determining the main demographic processes steering population dynamics is also valuable for helping to identify the location, time of year (e.g. breeding or non-breeding season) and spatial scale at which conservation strategies need to be implemented, especially for migratory species (Schaub et al. 2012).

Integrated population models (IPMs) were developed initially to exploit the fact that census data contain information on the survival and reproduction of individuals and vice versa (Besbeas et al. 2002, Schaub and Abadi 2011). Rather than analysing census data and demographic data separately (such as survival analyses based on capture–mark–recapture data), integrating these measures permits information flow between demographic processes, accounting for imprecision of data and correlation between estimators (Besbeas et al. 2002, Schaub and Abadi 2011). The method improves the accuracy of parameter estimation and allows estimation of parameters for which no explicit data are available (Tavecchia et al. 2009, Schaub and Abadi 2011, Altwegg et al. 2014). IPMs in the Bayesian framework are based on a state-space model (Brooks et al. 2004): time-series models in which the latent state process (i.e. the true population size) is linked to population counts via an observation process, thus accounting for observation error (Brooks et al. 2004). With these advances in the modelling process, IPMs are increasingly used in conservation science (Zipkin and Saunders 2018).

In long-lived species, adult survival is often the main contributor to population growth (Sæther and Bakke 2000) and this relative contribution, in comparison with other vital rates, increases with generation time (i.e. the average difference in age between parents and their newly-hatched offspring; Koons et al. 2014). At the same time, there is often little variation found in the particular traits that make the largest contribution to the rate of population growth (Gaillard et al. 1998, Pfister 1998, Sæther and Bakke 2000, Koons et al. 2014, but see Morris and Doak 2004, Jongejans et al. 2010). Greater longevity leads to greater complexity in the age structure of the population, resulting in population growth rates for species with slow life histories (e.g. long life span and generation time, and high adult survival rates) being more sensitive to changes in their stable age distribution than shorter-lived species (Koons et al. 2014).

The Bewick's swan *Cygnus columbianus bewickii* is a large, long-lived migratory bird species that breeds on tundra habitat across the Russian Arctic (Rees 2006). The northwestern European population, which winters in northwest Europe, has shown a variable trend in numbers since the mid-20th century. Between 1970 and 1995 numbers increased rapidly from ca 15 000 to about 30 000 birds (Beekman et al. 2019). Similarly increasing trends observed for other European swan and goose populations have been attributed to the birds' increased use of agricultural land improving their winter survival and breeding success, combined with a reduction in mortality resulting from hunting bans (Van Eerden et al. 2005, Fox et al. 2010, Rees and Beekman 2010). In contrast to many of these populations, Bewick's swan numbers decreased again, to 21 500 birds in 2005 and 18 000 in 2010 (Rees and Beekman 2010, Beekman et al. 2019). The most recent international count indicated an increase in population size with around 20 500 birds in 2015, but results of the January 2020 census are required to evaluate the population trajectory (Beekman et al. 2019). The population is thought to be sensitive to climate and habitat changes, and to illegal or accidental shooting, though the causes of these population trends and the mechanisms underlying the population dynamics remain unclear (Newth et al. 2011, Nagy et al. 2012).

Given its small population size and recent declining population trend, the northwestern European population of Bewick's swans is now considered endangered and is included in the European Red List for birds of conservation concern (Birdlife International 2015, Rees et al. 2019). The species is also listed as a target within the Natura 2000 framework (Annex I Birds Directive 2009/147/EC of the European Parliament). In response to the decline, experts on the species from across the flyway met to discuss and develop an international single species action plan (ISSAP) for the population; the resulting ISSAP was adopted by the AEWFA in 2012, with the overall aim of halting the ongoing decline in the short-term and maintaining the population minimally at its 2000 level (23 000 birds) in the long-term (Nagy et al. 2012). Several hypotheses for the decline are listed in the ISSAP, and

the plan also calls for continued international collaborative monitoring and research into demographic parameters and population change, in order to understand and thus address the causes of the decline.

Previous efforts to study the population dynamics of the northwestern European population of Bewick's swans found no trends in breeding success (neither in the percentage of juveniles in the population nor in brood size) over the period 1964–2015, although fewer young were observed in winters following a colder summer or a higher abundance of Arctic fox *Vulpes lagopus* in the breeding area (Wood et al. 2016). Similarly, no consistent temporal trend was found in survival over the years 1970–2015 (Wood et al. 2018). Survival rates over the study period varied between decades, with mean survival rates being highest in the 1980s and lowest in the 2010s (Wood et al. 2018) in accordance with the population trends described by the count data. However, neither study provided a comprehensive explanation for the population trend.

In this study, we therefore developed an integrated population model (Abadi et al. 2010, Kéry and Schaub 2011) to study the Bewick's swans' population dynamics and underlying vital rates. By combining three different long-term datasets we aimed to obtain more precise estimates of the swans' survival and breeding success during periods of positive and negative population growth. In addition, we performed a transient life table response experiment to assess which changes in age structure and vital rates contributed most to variation in population growth. Finally, we also explored the environmental variables that might explain variation in the Bewick's swans' vital rates, to determine where conservation action might be required.

Methods

Data collection

Three different types of data sources were used in this analysis: census data, capture–mark–resighting (CMR) data and juvenile proportions. All data were recorded in the Bewick's swans' wintering range (northwest Europe), as described below.

Census data

Internationally coordinated Bewick's swan counts have been carried out since the early 1970s, initially through the International Waterbird Censuses coordinated by Wetlands International in 1973, 1976, 1979, then as special surveys focussing on Bewick's swans in 1984 and 1987 (Dirksen and Beekman 1991, Rees 2006, Nagy et al. 2012). From 1990 onwards, the Wetlands International/IUCN SSC Swan Specialist Group has organised an International Swan Census every five years in mid-January (Beekman et al. 2019, Laubek et al. 2019). To estimate vital rates annually in the IPM, numbers in the population between census years were imputed, as IPMs without imputed population counts did

not converge nor produced reliable year-specific estimates. Imputed values were drawn from a normal distribution with mean and standard deviation based on counts in the nearest two census years to mimic natural fluctuations in population size (Zhao et al. 2019).

Capture–mark–resighting data

Data from two different ringing schemes were used in this study. In the first, undertaken by the Wildfowl and Wetlands Trust (WWT) in the United Kingdom since the mid-1960s, Bewick's swans are ringed with a plastic leg ring, each engraved with a unique alphanumeric code (Ogilvie 1972). The second scheme was initiated by author TH (in 1989) and continued by the Netherlands Institute of Ecology (NIOO-KNAW) (since 2005). In this scheme, Bewick's swans are ringed with a neck band with alphanumeric codes (and especially since 2005 also with leg rings with identical codes). The WWT dataset used in this study (1969–2015) consists of 830 individuals marked as juveniles (i.e. first winter birds, determined by their grey plumage), 529 marked as yearlings (birds in their second winter, identified by traces of grey juvenile feathering in otherwise white adult plumage) and 1833 marked as adults (in their third winter or older). The NIOO dataset (1989–2015) contained 79 individuals marked as juveniles, 33 as yearlings and 432 as adults. Ringed birds have been reported by volunteer bird watchers from across north-west Europe. For all years following capture and marking, we determined for each individual whether it had been resighted at least once per winter, between the months of December and February inclusive. This resulted in individual leg-ringed birds being recorded for a total of 13 358 winters and neck-banded birds recorded for 2201 winters over the study period. From these encounter histories, resighting probabilities were modelled for leg rings (p_l) and neck bands (p_n) separately, because the former were known to have lower resightings rates (Wood et al. 2018; Supplementary information).

Winter reproduction data

Long-term reproduction data from the breeding grounds is not available for Bewick's swans. Therefore, we used winter brood size (i.e. the average number of juveniles per successful breeding pair) and proportion of juveniles in the population, recorded in winter, as a proxy for productivity. Both variables were monitored annually in the UK (Wood et al. 2016) and in the Netherlands (Poorter 1991, Hornman et al. 2020) in mid-January and late November/early December, respectively. These two countries receive 60–90% of the total population in mid-winter, and no consistent geographical trend in juvenile proportions has been detected (Beekman et al. 2019). We therefore took the mean of their national productivity estimates, for each of the two variables, as representative of annual breeding success for the population as a whole. The annual proportion of juveniles was used to create age-structured counts. Winter brood size was used to create an informative prior for the estimate of apparent breeding success κ (below).

Integrated population modelling

We developed a female-based, age-structured population model with three age classes (i.e. juvenile, yearling and adult). We modelled (female) apparent breeding success κ as a latent parameter. Because counts contain information about survival and reproduction, integrating counts, annual proportion of juveniles and age class-specific survival in a single model allowed us to estimate apparent breeding success, despite the lack of reproduction data from the breeding grounds. As such, κ reflects breeding propensity, breeding success and post-fledging survival until winter, all in one parameter.

The CMR data were analysed as individual encounter histories and modelled with a Cormack–Jolly–Seber (CJS) model (Lebreton et al. 1992). Apparent survival from year t to $t+1$ was modelled on the logit scale as a function of age class and time. Resighting probability in year t was modelled on the logit scale as a function of marker type and time. In both rates (survival and resighting probability), environmental stochasticity was included by considering time as a random year effect.

The census data were analysed using a state-space model (Brooks et al. 2004). The state-space model consists of a state process and an observation process. The state process describes the true but unknown population trajectory and accounts for demographic stochasticity by describing the number of juveniles via a Poisson distribution and the number of yearlings and adults via a binomial distribution. The observation process describes the link between the true and the observed population size (De Valpine and Hastings 2002). Using the data on the proportion of juveniles, we divided the counts into juveniles and older individuals. Assuming an even sex ratio, we halved counts before implementation in the female-based model.

The population transition matrix of the female-based, age-structured population model is the following:

$$\mathbf{W}_{t+1} = \begin{bmatrix} W_j \\ W_y \\ W_a \end{bmatrix}_{t+1} = \begin{bmatrix} 0 & 0 & \kappa\sqrt{\phi_a} \\ \phi_j & 0 & 0 \\ 0 & \phi_y & \phi_a \end{bmatrix} \begin{bmatrix} W_j \\ W_y \\ W_a \end{bmatrix}_t \quad (1)$$

where W_j , W_y and W_a are the number of juvenile, yearling and adult females in winter, respectively, ϕ_x is the survival rate between year t and $t+1$ for females in age class x , and κ is the apparent breeding success in year t : the average number of female fledglings per successful breeding female, that survived until winter.

To estimate age class-specific numbers and demographic parameters, the joint likelihood is composed of the likelihood of the state-space model for the population census data and the CJS model for the individual encounter histories. The IPM is analysed in the Bayesian framework, which combines the joint likelihood with prior probability distributions to obtain posterior distributions of the parameters. We specified non-informative priors for all parameters but apparent

breeding success. The prior for apparent breeding success was a uniform distribution between 0 and 2 (i.e. the average winter brood size (Wood et al. 2016) that is set to be the upper limit of κ). Markov chain Monte Carlo (MCMC) sampling was used to simulate observations from the posterior distributions with JAGS ver. 4.3.0 (Plummer 2003) run from R with *jagsUI* ver. 1.5.1 (Kellner 2019). We ran three chains of 200 000 iterations with a burn-in of 100 000 and a thinning rate of 50, resulting in a total of 6000 posterior samples. Convergence of the MCMC chains was evaluated by ensuring that the Brooks–Rubin–Gelman diagnostic \hat{R} for each parameter was below 1.1 (Brooks and Gelman 1998).

A more detailed description of the IPM, including likelihoods and priors, can be found in Supplementary information. R and JAGS code of the IPM can be found in Supplementary information.

Retrospective perturbation analysis

Retrospective perturbation analyses aim to decompose the effects of observed variation in demographic parameters on past population dynamics (Caswell 2000). Traditionally, the focus has been placed on identifying the demographic rate with the strongest influence on the asymptotic growth rate λ (Koons et al. 2016). These analyses, however, ignore the feedback between population structure and demographic rates (Tuljapurkar 1990) and short-term transient dynamics (Stott et al. 2011) that are common for many contemporary populations (Koons et al. 2016). Here, we performed a transient life table response experiment (LTRE) (Koons et al. 2016, 2017) to determine the contributions of changing vital rates and population structure to the variation in the realized population growth rate, $\lambda_t = W_{t+1}/W_t$. A more detailed description of the transient LTRE can be found in Supplementary information.

Environmental variables

We collated data on several potential explanatory variables for the variation in vital rates based on previous research on Arctic-nesting waterfowl (Skinner et al. 1998, Trinder et al. 2009, Morrisette et al. 2010). In order to prevent collinearity, we condensed variables wherever possible (Morrisette et al. 2010). Weather-related variables included were the cumulative negative degree days (ndd, °C) and cumulative degree days (cdd, °C) in Naryan-Mar (Russia, i.e. the breeding range) and average tailwind in the Baltic region (58°N, 23°E). Ndd was comprised of the summed mean daily negative air temperatures in late spring (1 May–30 June), corresponding to the nesting and incubation period (Rees 2006). Cdd was comprised of the summed mean daily positive air temperatures during summer and autumn (1 July–31 October), corresponding to the period between hatching and fledging and set to include the frost days in autumn (Rees 2006). Average tailwind was collated for autumn (18 September–31 October), corresponding to the autumn migration period (Rees 2006), and calculated from average

north–south and east–west windspeeds, multiplied with the cosines of the heading in degrees (225°). Temperature data were acquired from the NOAA Global Summary of the Day dataset (NOAA National Climatic Data Centre 2019) and wind data from the NOAA NCEP/NCAR reanalysis project (Kalnay et al. 1996).

To account for a potential effect of density dependence in the population, we included winter totals as estimated by the IPM as a predictor. In addition, we included whooper swan population estimates for the northwest mainland European population (Netherlands, Germany and Denmark combined), derived from the International Waterbird Census over the study period (Wetlands International 2019), as it was hypothesised that competition with this species might be an influence on the declining population trend recorded for Bewick's swans since 1995 (Nagy et al. 2012). The Lake Peipsi (Estonian-Russian border, 58.5°N, 27.5°E) water levels for each year of the study (average September–October), measured by the Estonian Meteorological and Hydrological Institute, were also included, as water levels determine the availability of macrophytes in this key stop-over site and other lakes in the region for Bewick's swans arriving from the Russian Arctic during autumn migration (Luigujõe et al. 1996).

We ran a series of generalized linear models (GLMs) with the posterior means of the IPM output parameters (adult, yearling and juvenile survival, apparent breeding success) as response variables, and the environmental variables as predictors. We included year as a predictor variable in the analysis to cover all environmental variables that changed monotonically over time but that we were unable to capture in data. Most predictor variables were not correlated (Pearson correlation coefficient $r < 0.3$), apart from year, Bewick's swan estimates and the whooper swan estimates, which were highly correlated (year and whooper swan $r = 0.96$; year and Bewick's swan $r = 0.60$; Bewick's swan and whooper swan $r = 0.60$). We therefore ran all models three times: once with year, once with the whooper swan estimates, and once with Bewick's swan estimates included. All variables were centered and scaled to a mean of 0 and sd of 1 before running the model. We compared the AIC of the models to choose the most parsimonious (i.e. the one with the lowest AIC). All analyses were run in R ver. 3.6.2 (<www.r-project.org>).

Results

Age class-specific demographic rates

The mean apparent juvenile survival was 0.908 (95% credible interval: 0.891, 0.926; Fig. 1a), with lower values at the start of the study period. Apparent yearling survival (0.936; 0.917, 0.954; Fig. 1b) was higher and more constant through time than apparent adult survival (0.873; 0.869, 0.877; Fig. 1c). Apparent breeding success κ , defined as the average number of female fledglings per successful breeding female that survived until winter (overall mean: 0.189; 95% credible interval 0.184, 0.194), showed a clear shift from 0.224 (0.216,

0.232) in the period of population increase (period 1, 1970–1994) to 0.145 (0.138, 0.151) in the period of population decrease (period 2, 1995–2015) ($P(\kappa_{\text{period1}} > \kappa_{\text{period2}}) = 1.0$), and closely followed (Pearson's r : 0.88) variations in the proportion of juveniles observed in the population during winter (Fig. 1d–e).

Contributions to variation in population growth rate

The mean realized population growth rate was 1.035 (± 0.052 SD) in period 1 and 0.983 (± 0.041 SD) in period 2. The two demographic rates that contributed most to between-year variation in the population growth rate λ_t ($\text{var}(\lambda_t)$: 0.003), were apparent breeding success κ and adult survival ϕ_a (Fig. 2). The contribution of juvenile survival ϕ_j and yearling survival ϕ_y to variation in λ_t was positive but small, whilst the effect of the population structure components were negative and also small (Fig. 2). Based on non-overlap of the posterior means with zero, all variables contributed significantly to the variation in realized population growth rate, except for ϕ_y and ϕ_j . Vital rates contributed 94.6% of the total contribution. Supplementary information for numerical estimates.

Environmental variables

Comparing the model outputs of the three different sets of GLMs (Supplementary information) based on their AIC values (Burnham and Anderson 2002), showed that, although differences were minor and often within ΔAIC of two, the model including whooper swan estimate was the most parsimonious for adult survival and apparent breeding success. The model with Bewick's swan estimate and year were the most parsimonious for the GLMs with yearling survival and juvenile survival as the response variable, respectively (Supplementary information). For adult and yearling survival, we found no significant effects of any of the predictor variables. Year, the water level in Lake Peipsi and *ndd* showed a significant positive association with juvenile survival (higher juvenile survival in more recent years, with higher water levels in autumn and with colder summers). Apparent breeding success was negatively associated with whooper swan estimate (Table 1).

Discussion

By integrating three long-term datasets available for the northwestern European Bewick's swan population (census data, CMR data and the proportion of juveniles present in winter) we were able to obtain precise estimates for the survival rates for three different age classes (Abadi et al. 2010). In addition, we used the possibility of the IPM framework to synthesize parameters for which no specific data were available (Abadi et al. 2010, Altwegg et al. 2014), namely breeding propensity, hatching success and post-fledging survival (until winter), to generate an estimate of annual apparent breeding success κ . We show that adult survival and κ were the vital rates that contributed most to variation in the

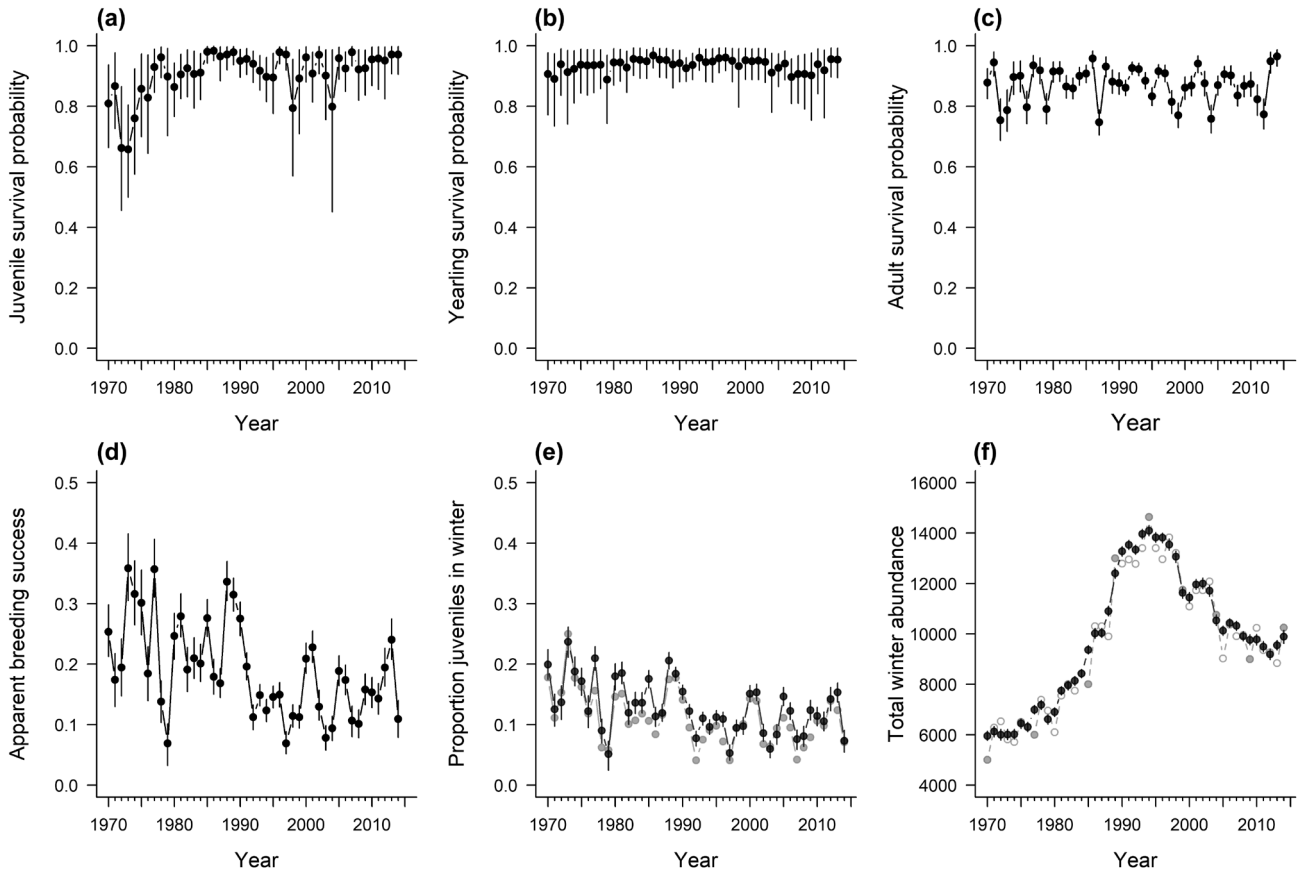


Figure 1. Estimates from the integrated population model of northwestern European population of Bewick's swans. (a–c) Annual apparent survival for (a) juveniles ($\phi_{j,t}$), (b) yearlings ($\phi_{y,t}$) and (c) adults ($\phi_{a,t}$). (d) Annual apparent breeding success (κ_t ; black points) and the proportion of juveniles in the population during winter (j_t , grey points). (e) Annual winter proportion of juveniles as estimated by the model (black points) and as observed in winter (grey points). (f) Annual winter abundance as estimated by the model (black points), with actual (solid grey points) and imputed (open grey points) population counts. Estimates are represented by posterior means and 95% credible intervals.

population trends (growth and subsequent decline) observed over the last five decades (Fig. 2).

Although population growth rates of long-lived species are in theory particularly sensitive to changes in adult survival, this vital rate is often stable over time. Other demographic rates are more sensitive to environmental fluctuations and thus, in effect, contribute more to the population growth rate (Koons et al. 2014). In our species we indeed find that adult survival made a high contribution to variation in the rates of population growth, but varied little over time. This is in line with the Demographic Buffering Hypothesis (Boyce et al. 2006, Hilde et al. 2020), but note that no proof for this hypothesis was found in a comparative study among waterfowl species (Koons et al. 2014). More between-year variation was visible in the juvenile survival and κ estimates, for the latter especially between the two periods with contrasting growth rates, i.e. when the population was increasing during the 1970s to mid-1990s and the decrease in numbers thereafter (Fig. 1a, d). The same pattern (i.e. high contribution of adult survival to the population growth rate but low variation in this parameter, and more variation in the fecundity-related parameters such as nest success and juvenile survival) has also been found in

other studies of waterfowl (Cooch et al. 2001, Hoekman et al. 2002, Bentzen and Powell 2012, Wilson et al. 2012). On considering potential explanatory variables for the variation in demographic rates, we found that juvenile survival increased significantly over time (year). The year variable however can also be seen as a proxy for all environmental variables that have changed over the years without being captured in our set of variables. This includes for example the migration distance of the northwestern European Bewick's swan population, which has decreased gradually since the early 1970s (Nuijten et al. 2020b). Other variables that might have changed over the same period, such as the abundance of predators on the Arctic breeding and moulting grounds (Béty et al. 2002, Smith et al. 2010, Nolet et al. 2013), could also play a role. The increase in juvenile survival coincides with the swans switching from feeding on aquatic resources to agricultural resources (Merne 1972, Mullié and Poorter 1977). Juveniles have lower intake rates than adults when feeding on below-ground part of aquatic macrophytes, and hence are thought to benefit from this change in diet, more so than adult birds (Nolet et al. 2014). The increase in juvenile survival occurred in the period of population increase (< 1995).

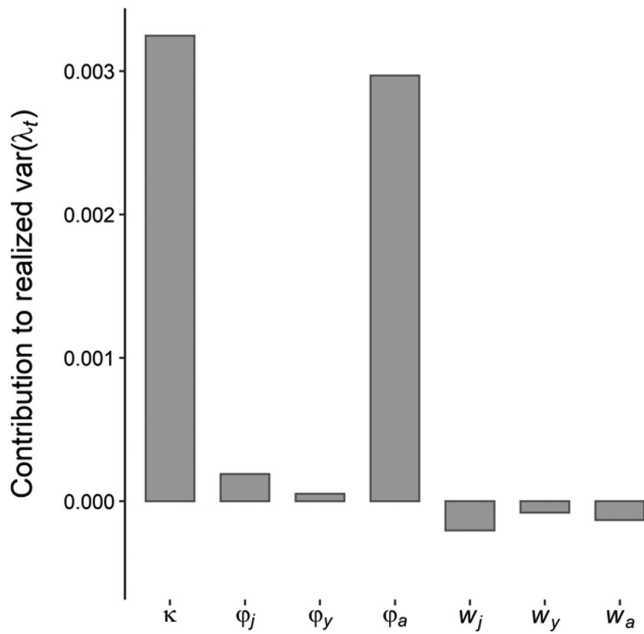


Figure 2. Contributions of the vital rates (i.e. apparent breeding success κ , apparent survival for juveniles ϕ_j , yearlings ϕ_y and adults ϕ_a) and normalised components of the population structure (i.e. winter abundance for juveniles w_j , yearlings w_y and adults w_a) to variation in realized population growth rate $\text{var}(\lambda_t)$, determined through a transient life table response experiment (LTRE).

One factor known to have changed over time is whooper swan abundance (Supplementary information). The north-western mainland European population of whooper swans has been increasing steadily in recent decades (Laubek et al. 2019). Being larger, the whooper swan is likely to win competitive encounters with Bewick's swans over food (Black and Rees 1984) or nesting places. Competition for food outside the breeding season may lead to a lower breeding success, by influencing body condition prior to the breeding season (Hoye et al. 2012, Koyama et al. 2013). It has been found that food abundance in the wintering area is not limiting, even when competition is present (Wood et al. 2019), but food limitation is more likely at migratory sites where swans concentrate and food depletion has been demonstrated (Nolet and Drent 1998). Previous research has shown that the two species often overlap on their spring staging areas in Estonia (Luigujõe et al. 2002), and potentially also on the Gulf of Finland near St Petersburg (Zaynagutdinova et al. 2019). Aerial surveys undertaken between 1980 and 2000 of the Pechora Delta and the adjacent Russkiy Zavorot Peninsula, considered to be one of the main breeding areas for Bewick's swans in European Russia (Rees 2006), found an increase in the number of territorial whooper swan pairs breeding in the region, whereas the number of Bewick's swan pairs was stable (Shchadilov 2002). Further studies are needed to investigate in greater detail the potential effects on Bewick's swans of interspecific competition for resources in different parts of the northwestern European flyway.

In addition, both the water level in Lake Peipsi in autumn and the cumulative negative degree days (ndd) in summer (both continuous variables) were significantly and positively associated with annual estimates of juvenile survival. Lake Peipsi comprises an important stop-over site for Bewick's swans in autumn (Luigujõe et al. 1996). To be able to reach the belowground parts of macrophytes in the substrate of the lake, the water level must not be too high (Luigujõe and Kuresoo 2007). Observations in 2005 and 2006, years with a very high and very low water table respectively, convincingly showed the strong relationship of Bewick's swan numbers with water tables: in 2005 smaller groups visited far fewer sites in autumn, while in 2006 the total autumn count reached up to 3000 on both sides of the lake (Luigujõe and Kuresoo 2007). Autumn water levels are heavily dependent on rainfall, and high water levels in Lake Peipsi are likely to be representative of high water levels in surrounding lakes; hence, aquatic foraging conditions would be poor in the whole region when water levels are high, and it was suggested that this would result in slower autumn migration by Bewick's swans through the region (Beekman et al. 2002). We therefore expected that there would be a negative relationship between the water levels and (juvenile) survival, but this hypothesis was not upheld. Our satellite tracking in an autumn with extremely high water levels in Peipsi (autumn 1998) revealed that the Bewick's swans visited many alternative sites, while slowly continuing their migration (Beekman et al. 2002). This might be beneficial for juveniles, perhaps through less competition at specific sites. A similar reasoning could explain the effect of ndd: in years with low summer temperatures, the reduction in apparent breeding success might lead to lower competition between the hatchlings, and to higher juvenile survival rates the following year. Another plausible explanation for the positive association of juvenile survival with ndd, is that in harsh autumns many fledglings die (Wood et al. 2016), leaving only the strongest individuals in the juvenile phase. However, we did not find a negative association between apparent breeding success and ndd to substantiate these possible explanations (Table 1).

Previous studies have found that Bewick's swans seem to profit from favourable wind conditions during spring migration (Klaassen et al. 2004). In line with this, we expected that headwinds encountered during autumn migration would have negative effects on (juvenile) survival. Our analyses however found no correlation between headwinds and time, and hence no evidence of any long-term trend in headwinds (Supplementary information). It remains to be seen, therefore, whether this factor affects the longer-term population dynamics of Bewick's swans in northwest Europe.

Negative density dependence is regarded as an important driver of population growth rates (Koons et al. 2014). If influential, it can have both negative and positive effects on the demographic rates when population numbers are high or low, respectively (Turchin 1995) and effects can vary for different age classes (Layton-Matthews et al. 2019). Results from the LTRE however, show only a small negative effect of components of

Table 1. Model output of GLM with demographic parameters estimated by the IPM as response variables (adult, yearling and juvenile survival, and apparent breeding success) and the explanatory variables as predictors (year, whooper swan estimate, Bewick's swan estimate, tailwind in the Baltic sea in autumn, water level in Lake Peipsi in autumn, negative degree days in Naryan-Mar in spring, cumulative degree days in Naryan-Mar in summer and autumn combined). The model including whooper swan estimate was the most parsimonious for adult survival and apparent breeding success. The model with Bewick's swan estimate was the most parsimonious for yearling survival and the model with year was the most parsimonious for juvenile survival. Differences in AIC were however minor (Supplementary information). The result of the other GLMs are presented in Supplementary information. Bold text indicates effects that are significantly different from zero.

	Adult survival			Yearling survival			Juvenile survival			Apparent breeding success						
	Est	SE	t	Est	SE	t	Est	SE	t	Est	SE	t	p			
(Intercept)	-0.144	0.175	-0.827	0.415	-0.000	0.149	-0.001	1.0	-0.070	0.141	-0.498	0.622	0.044	0.156	0.282	0.780
Year									0.584	0.160	3.660	0.001				
Tailwind	0.144	0.170	0.850	0.402	0.005	0.144	0.038	0.970	0.208	0.137	1.529	0.136	0.052	0.152	0.342	0.734
Lake Peipsi	0.259	0.174	1.490	0.145	0.188	0.146	1.282	0.209	0.426	0.140	3.049	0.005	-0.096	0.156	-0.619	0.540
ndd Narjan	0.156	0.210	0.745	0.462	0.043	0.178	0.245	0.808	0.344	0.168	2.051	0.049	0.086	0.188	0.457	0.651
cdd Narjan	-0.159	0.180	-0.881	0.385	-0.206	0.150	-1.368	0.181	-0.167	0.148	-1.130	0.267	0.012	0.162	0.071	0.944
Whooper est.	0.087	0.187	0.463	0.647									-0.533	0.168	-3.161	0.004
Bewick's est.					0.315	0.158	1.995	0.055								

the population size on the variation in population growth rate over the study period, of which only the effect of adults W_a was significant (Fig. 2). In addition, Bewick's swan population estimates did not prove to be an important predictor of the vital rates in the GLM analysis (Table 1). These results are in line with previous results where it was found that density-dependence performed poorly as a predictor of Bewick's swan survival estimates (Wood et al. 2018).

An assumption of the IPM framework is the independence of the underlying datasets (Kéry and Schaub 2011). Although it is possible that this study violates this assumption, because every dataset originates from the same population in the wintering grounds and individuals can appear in multiple datasets, we argue that this assumption is valid for our input data. The international censuses are conducted on a five-year basis, in one weekend in January, the juvenile proportions are determined separately and on an annual basis at a fixed time in winter, and the resightings of marked individuals are collected by individual observers throughout the winter season on any location. Besides, it has been shown that violation of this assumption has little effect on estimation of parameters (Abadi et al. 2010, Schaub and Fletcher 2015), in particular when the number of individually marked birds is a small proportion of the studied population (Weegman et al. 2016).

As part of the IPM, we ran a CJS model to obtain survival estimates from the encounter histories. In traditional survival analysis, usually a goodness-of-fit test is conducted, but we are currently unable to find a means of implementing this within the IPM framework (Kéry and Schaub 2011; but see (Besbeas and Morgan 2014). In a previous, traditional survival analysis based on the same data, a goodness-of-fit test revealed evidence for both trap-dependence (trap-happiness) and transience (Wood et al. 2018). However, the \hat{c} value (2.5; calculated in U-Care, Choquet et al. 2009) was below the maximum \hat{c} value of 3.0 recommended for reliable survival modelling (Lebreton et al. 1992). In addition, Abadi et al. (2013) showed that capture heterogeneity did not have a large effect on the resulting estimates.

In the model, all individuals in the adult age class considered to be capable of breeding, with a certain breeding propensity (included in κ). We know from observations (individuals that returned to the wintering grounds with juveniles) that, although birds of three years old do reproduce, most individuals start reproduction later in life (4–5 years of age; Rees 2006). This simplification in the model means that κ underestimates the apparent breeding success of potential breeders (i.e. ≥ 4 -year-olds), while still providing a useful estimate for the whole population of ≥ 3 -year-olds. We do not know whether the distribution of age of first breeding has changed over time, which might occur if an increase in population size and breeding densities is resulting in density-dependent regulation of the population in the breeding range (Koons et al. 2014).

In our study, apparent breeding success κ was modelled as a latent state variable (i.e. it was inferred in our IPM rather than informed by data). This was necessary as there are currently no long-term data on the productivity of the

northwest European Bewick's swan population that are measured on the Arctic breeding grounds. Given our finding that apparent breeding success was critical to explaining Bewick's swan population dynamics, our work reinforces the need for improved long-term surveillance of measures of swan productivity in the breeding range, as suggested in the Bewick's swan AEWa action plan (Nagy et al. 2012). Such measures would allow future IPMs to be parameterized using counts, CMR and productivity data sets together, which would improve accuracy of the model estimates. The availability of these measures would also enable researchers to test for temporal trends directly, and would complement the age ratio data that is already collected in the wintering areas (Wood et al. 2016). We think that our measure of apparent breeding success, κ , was more representative of actual breeding success than the productivity parameters recorded in winter because it was based on the summer population of potentially breeding females (Supplementary information). This may explain why we found a significant decline in reproductive success over the years, when previous analyses using the winter measurements have not done so (Wood et al. 2016). The importance of apparent breeding success as indicated by the LTRE (Fig. 2) must be treated with some care, as it is known that latent variables often seem to explain large proportions of the growth rates (Ahrestani et al. 2017, Saracco and Rubenstein 2020), potentially because they may absorb systematic bias associated with the different datasets (Tavecchia et al. 2009, Taylor et al. 2018).

In conclusion, we found that declining reproductive success in this long-lived migratory species was the major driver of the observed population decline in north-western Europe. As such, our study advances one of the key aims of the AEWa action plan for Bewick's swans, namely to improve our understanding of the demographic causes of the documented decline in population size (Nagy et al. 2012). Future studies will be required to assess why apparent breeding success may have declined over time, and to identify important environmental drivers. As per the recommendations of the AEWa action plan, such studies ought to address potential habitat changes, predation and interspecific competition with other swan species within the Bewick's swan breeding and staging areas (Nagy et al. 2012). In addition, we found an increase in juvenile survival over time, associated with the water levels at important foraging sites in autumn. Our study highlights the importance of considering all information available on the population level to estimate precise demographic rates which can in turn be used to accurately assess the influence of potential explanatory variables on population growth rates. Such analyses are important in understanding the population dynamics of species with fluctuating population sizes, and to inform management and conservation decisions.

Acknowledgements – We thank all the people involved in the ringing schemes and the volunteers for counting and reporting their resightings over many decades. Without their time spent in counting and marking Bewick's swans, reading rings and/or neck collars, and

reporting their sightings, this study would not have been possible. WWT is particularly indebted to Robin Jones, Jenny Earle, Alison Bloor and Steve Heaven for their dedicated work in developing and maintaining the Bewick's swan database, and also to Julia Newth and Kane Brides for their involvement. International Bewick's Swan Censuses were carried out under the auspices of the Wetlands International/IUCN-SSC Swan Specialist Group, with particular thanks to SOVON (the Dutch Centre for Field Ornithology), the DDA Federation of German Avifaunists, the Research Institute for Nature and Forest in Belgium and the Department of Bioscience at Aarhus University, Denmark. We thank Michael Schaub and Marc Kéry for introducing us to IPM and providing useful modelling suggestions.

Funding – Counts within the UK were undertaken and coordinated in association with WeBS (a partnership between the British Trust for Ornithology, the Royal Society for the Protection of Birds and the Joint Nature Conservation Committee, in association with the Wildfowl and Wetlands Trust) and funded by the Goose and Swan Monitoring Programme (GSMP) (on behalf of the WWT, the Joint Nature Conservation Committee and Scottish Natural Heritage. RJMN was supported by NWO-NPP grant 866.15.206 awarded to BAN.

Author contributions

Rascha Nuijten: Conceptualization (lead); Data curation (equal); Formal analysis (lead); Methodology (lead); Writing – original draft (lead); Writing – review and editing (lead). **Stefan Vriend:** Conceptualization (lead); Data curation (equal); Formal analysis (lead); Methodology (lead); Writing – original draft (lead); Writing – review and editing (lead). **Kevin Wood:** Formal analysis (supporting); Methodology (supporting); Writing – original draft (supporting); Writing – review and editing (supporting). **Trinus Haitjema:** Data curation (supporting). **Eileen Rees:** Data curation (supporting); Writing – original draft (supporting); Writing – review and editing (supporting). **Eelke Jongejans:** Formal analysis (supporting); Methodology (supporting); Writing – original draft (supporting); Writing – review and editing (supporting). **Bart Nolet:** Conceptualization (equal); Data curation (supporting); Funding acquisition (lead); Supervision (lead); Writing – original draft (supporting); Writing – review and editing (supporting).

Transparent Peer Review

The peer review history for this article is available at <https://publons.com/publon/10.1111/jav.02574>

Data availability statement

Data available from the Dryad Digital Repository: <<https://dx.doi.org/10.5061/dryad.g1jwstqj7>>. (Nuijten et al. 2020a).

References

Abadi, F., Gimenez, O., Arlettaz, R. and Schaub, M. 2010. An assessment of integrated population models: bias, accuracy and violation of the assumption of independence. – *Ecology* 91: 7–14.

- Abadi, F., Botha, A. and Altwegg, R. 2013. Revisiting the effect of capture heterogeneity on survival estimates in capture–mark–recapture studies: does it matter? – *PLoS One* 8: 20–22.
- Ahrestani, F. S., Saracco, J. F., Sauer, J. R., Pardieck, K. L. and Royle, J. A. 2017. An integrated population model for bird monitoring in North America. – *Ecol. Appl.* 27: 916–924.
- Altwegg, R., Jenkins, A. and Abadi, F. 2014. Nestboxes and immigration drive the growth of an urban peregrine falcon *Falco peregrinus* population. – *Ibis* 156: 107–115.
- Bairlein, F. 2016. Migratory birds under threat. – *Science* 354: 547–548.
- Beekman, J. H., Nolet, B. A. and Klaassen, M. 2002. Skipping swans: fuelling rates and wind conditions determine differential use of migratory stopover sites of Bewick's swans *Cygnus bewickii*. – *Ardea* 90: 437–460.
- Beekman, J., Koffijberg, K., Wahl, J., Kowallik, C., Hall, C., Devos, K., Clausen, P., Hornman, M., Laubek, B., Luigujõe, L., Wierloch, M., Boland, H., Švažas, S., Nilsson, L., Stipnice, A., Keller, V., Gaudard, C., Degen, A., Shimmings, P., Larsen, B.-H., Portolou, D., Langendoen, T., Wood, K. and Rees, E. C. 2019. Long-term population trends and shifts in distribution of Bewick's swans *Cygnus columbianus bewickii* wintering in northwest Europe. – *Wildfowl Special Issue* 5: 73–102.
- Bentzen, R. L. and Powell, A. N. 2012. Population dynamics of king eiders breeding in northern Alaska. – *J. Wildl. Manage.* 76: 1011–1020.
- Besbeas, P. and Morgan, B. J. T. 2014. Goodness-of-fit of integrated population models using calibrated simulation. – *Methods Ecol. Evol.* 5: 1373–1382.
- Besbeas, P., Freeman, S. N., Morgan, B. J. T. and Catchpole, E. A. 2002. Integrating mark–recapture–recovery and census data to estimate animal abundance and demographic parameters. – *Biometrics* 58: 540–547.
- Béty, J., Gauthier, G., Korpimäki, E. and Giroux, J. F. 2002. Shared predators and indirect trophic interactions: lemming cycles and arctic-nesting geese. – *J. Anim. Ecol.* 71: 88–98.
- Birdlife International. 2015. European Red List for birds. – Office for Official Publications of the European Communities, Luxembourg.
- Black, J. M. and Rees, E. C. 1984. The structure and behaviour of the whooper swan population wintering at Caerlaverock, Dumfries and Galloway, Scotland: an introductory study. – *Wildfowl* 35: 21–36.
- Boyce, M. S., Haridas, C. V., Lee, C. T., Boggs, C. L., Bruna, E. M., Coulson, T., Doak, D., Drake, J. M., Gaillard, J. M., Horvitz, C. C., Kalisz, S., Kendall, B. E., Knight, T., Mastrandrea, M., Menges, E. S., Morris, W. F., Pfister, C. A. and Tuljapurkar, S. D. 2006. Demography in an increasingly variable world. – *Trends Ecol. Evol.* 21: 141–148.
- Brooks, S. P. and Gelman, A. 1998. General methods for monitoring convergence of iterative simulations? – *J. Comput. Graph. Stat.* 7: 434–455.
- Brooks, S. P., King, R. and Morgan, B. J. T. 2004. Bayesian approach to combining animal abundance and demographic data. – *Anim. Biodivers. Conserv.* 27: 515–529.
- Burnham, K. B. and Anderson, D. R. 2002. Model selection and multimodel inference. – Springer.
- Cardillo, M., Mace, G. M., Jones, K. E., Bielby, J., Bininda-Emonds, O. R. P., Sechrest, W., Orme, C. D. L. and Purvis, A. 2005. Evolution: Multiple causes of high extinction risk in large mammal species. – *Science* 309: 1239–1241.
- Caswell, H. 2000. Prospective and retrospective perturbation analyses: their roles in conservation biology. – *Ecology* 81: 619–627.
- Chen, I.-C., Hill, J. K., Ohlemuller, R., Roy, D. B. and Thomas, C. D. 2011. Rapid range shifts of species associated with high levels of climate warming. – *Science* 333: 1024–1026.
- Choquet, R., Lebreton, J. D., Gimenez, O., Reboulet, A. M. and Pradel, R. 2009. U-CARE: utilities for performing goodness of fit tests and manipulating CAPTURE–RECAPTURE data. – *Ecography* 32: 1071–1074.
- Cooch, E., Rockwell, R. F. and Brault, S. 2001. Retrospective analysis of demographic responses to environmental change: a lesser snow goose example. – *Ecol. Monogr.* 71: 377–400.
- Dirksen, S., and Beekman, J. H. 1991. Population size, breeding success and distribution of Bewick's swans *Cygnus columbianus bewickii* wintering in Europe in 1986–1987. Sears, J., and Bacon, P. J. (eds), Proceedings of the Third IWRB International Swan Symposium, Oxford 1989. *Wildfowl Supplement* no. 1: 120–124.
- De Valpine, P. and Hastings, A. 2002. Fitting population models incorporating process noise and observation error. – *Ecol. Monogr.* 72: 57–76.
- Fox, A. D., Ebbing, B. S., Mitchell, C., Heinicke, T., Aarvak, T., Colhoun, K., Clausen, P., Dereliev, S., Faragö, S., Koffijberg, K., Kruckenberg, H., Loonen, M. J. J. E., Madsen, J., Mooij, J., Musil, P., Nilsson, L., Pihl, S. and Van Der Jeugd, H. 2010. Current estimates of goose population sizes in western Europe, a gap analysis and an assessment of trends. – *Ornis Svecica* 20: 115–127.
- Gaillard, J., Festa-Bianchet, M. and Yoccoz, N. G. 1998. Components and population dynamics of large herbivores. – *Trends Ecol. Evol.* 13: 58–63.
- Global Surface Summary of the Day, GSOD 2019. – National Centers for Environmental Information, NESDIS, NOAA, U.S. Department of Commerce, USA.
- Hilde, C. H., Gamelon, M., Sæther, B. E., Gaillard, J. M., Yoccoz, N. G. and Pélambon, C. 2020. The demographic buffering hypothesis: evidence and challenges. – *Trends Ecol. Evol.* 35: 523–538.
- Hoekman, S. T., Mills, L. S., Howerter, D. W., Devries, J. H. and Ball, J. 2002. Sensitivity analyses of the life cycle of midcontinent mallards. – *J. Wildl. Manage.* 66: 883–900.
- Hoffmann, A. A. and Sgró, C. M. 2011. Climate change and evolutionary adaptation. – *Nature* 479: 479–485.
- Hornman, M., Hustings, F., Koffijberg, K., van Winden, E., van Els, P., Kleefstra, R., Zwanenwerkgroep, S. G. and Soldaat, L. 2020. Watervogels in Nederland in 2017/2018.
- Hoye, B. J., Hahn, S., Nolet, B. A. and Klaassen, M. 2012. Habitat use throughout migration: linking individual consistency, prior breeding success and future breeding potential. – *J. Anim. Ecol.* 81: 657–666.
- Jongejans, E., de Kroon, H., Tuljapurkar, S. and Shea, K. 2010. Plant populations track rather than buffer climate fluctuations. – *Ecol. Lett.* 13: 736–743.
- Kalnay, E., Kanamitsu, M., Kistler, R., Collins, W., Deaven, D., Gandin, L., Iredell, M., Saha, S., White, G., Woollen, J., Zhu, Y., Chelliah, M., Ebisuzaki, W., Higgins, W., Janowiak, J., Mo, K. C., Ropelewski, C., Wang, J., Leetmaa, A., Reynolds, R., Jenne, R. and Joseph, D. 1996. The NCEP NCAR 40-year reanalysis project. – *Bull. Am. Meteorol. Soc.* 77: 437–472.
- Katzner, T. E., Bragin, E. A. and Milner-Gulland, E. J. 2006. Modelling populations of long-lived birds of prey for conservation:

- a study of imperial eagles *Aquila heliaca* in Kazakhstan. – Biol. Conserv. 132: 322–335.
- Kellner, K. 2019. jagsUI: a wrapper around rjags to streamline JAGS analyses. – R Packag. Ver. 1.5.1. <<https://CRAN.R-project.org/package=jagsUI>>.
- Kéry, M. and Schaub, M. 2011. Bayesian population analysis using WinBUGS: a hierarchical perspective. – Academic Press.
- Klaassen, M., Beekman, J. H., Kontiokorpi, J., Mulder, R. J. W. and Nolet, B. A. 2004. Migrating swans profit from favourable changes in wind conditions at low altitude. – J. Ornithol. 145: 142–151.
- Koons, D. N., Gunnarsson, G., Schmutz, J. A. and Rotella, J. A. Y. J. 2014. Drivers of waterfowl population dynamics: from teal to swans. – Wildfowl Special Issue 4: 169–191.
- Koons, D. N., Iles, D. T., Schaub, M. and Caswell, H. 2016. A life-history perspective on the demographic drivers of structured population dynamics in changing environments. – Ecol. Lett. 19: 1023–1031.
- Koons, D. N., Arnold, T. W. and Schaub, M. 2017. Understanding the demographic drivers of realized population growth rates. – Ecol. Appl. 27: 2102–2115.
- Koyama, K., Kasahara, S. and Abe, S. 2013. Effects of the climatic conditions at breeding, stopover and wintering sites on the number of juvenile whooper swans *Cygnus cygnus* wintering in Japan. – Ornithol. Sci. 12: 107–115.
- Laubek, B., Clausen, P., Nilsson, L., Wahl, J., Wieloch, M., Meissner, W., Shimmings, P., Larsen, B. H. and Hornman, M. 2019. whooper swan *Cygnus cygnus* January population censuses for northwest mainland Europe, 1995–2015. – Wildfowl Special Issue 5: 103–122.
- Layton-Matthews, K., Loonen, M. J. J. E., Hansen, B. B., Coste, C. F. D., Sæther, B. E. and Grøtan, V. 2019. Density-dependent population dynamics of a high Arctic capital breeder, the barnacle goose. – J. Anim. Ecol. 88: 1191–1201.
- Lebreton, J. D. and Clobert, J. 1991. Bird population dynamics, management and conservation: the role of mathematical modelling. – In: C. M. Perrins, J.-D. Lebreton and G. J. M. Hiron (eds), Bird Population Studies: Relevance to Conservation and Management, Oxford University Press, pp. 105–125.
- Lebreton, J. D., Burnham, K. P., Clobert, J. and Anderson, D. R. 1992. Modeling survival and testing biological hypotheses using marked animals: a unified approach with case studies. – Ecol. Monogr. 62: 67–118.
- Luigujõe, L. and Kuresoo, A. 2007. Bewick's swans at lake Peipsi, pp. 192–193. – In: van Eerden, M., Bos, H. and van Hulst, L. (eds), In the mirror of a lake: Peipsi and IJsselmeer for mutual references. Ministerie van Verkeer en Waterstaat, Rijkswaterstaat, Waterdienst (RWS, WD), Dienst IJsselmeergebied (RWS, RDJ), Lelystad, 282 p.
- Luigujõe, L., Kuresoo, A., Keskpäik, J., Ader, A. and Leito, A. 1996. Migration and staging of the Bewick's swan *Cygnus columbianus bewickii* in Estonia. – Game Wildl. 13: 451–461.
- Luigujõe, L., Kuresoo, A. and Leivits, A. 2002. Numbers and distribution of whooper swans breeding, wintering and on migration in Estonia, 1990–2000. – Waterbirds 25: 61–66.
- Merne, O. J. 1972. Bewick's swans feeding on waste potatoes and other agricultural crops. – Br. Birds 65: 394–395.
- Morris, W. F. and Doak, D. F. 2004. Buffering of life histories against environmental stochasticity: accounting for a spurious correlation between the variabilities of vital rates and their contributions to fitness. – Am. Nat. 163: 579–590.
- Morrisette, M., Bêty, J., Gauthier, G., Reed, A. and Lefebvre, J. 2010. Climate, trophic interactions, density dependence and carry-over effects on the population productivity of a migratory Arctic herbivorous bird. – Oikos 119: 1181–1191.
- Mullié, W. C. and Poorter, E. P. R. 1977. Aantallen, verspreiding en terreinkeus van de kleine zwaan bij vijf landelijke tellingen in 1976 en 1977. – Watervogels 2: 85–96.
- Nagy, S., Petkov, N., Rees, E., Solokha, A., Hilton, G., Beekman, J. and Nolet, B. A. 2012. International single species action plan for the conservation of the northwest European population of Bewick's swan *Cygnus columbianus bewickii*. – In: AEWa technical series no. 44. AEWa, Bonn, Germany.
- Newth, J. L., Brown, M. J. and Rees, E. C. 2011. Incidence of embedded shotgun pellets in Bewick's swans *Cygnus columbianus bewickii* and whooper swans *Cygnus cygnus* wintering in the UK. – Biol. Conserv. 144: 1630–1637.
- Nolet, B. A. and Drent, R. H. 1998. Bewick's swans refuelling on pondweed tubers in the Dvina Bay (White Sea) during their spring migration: first come, first served. – J. Avian Biol. 29: 574–584.
- Nolet, B. A., Bauer, S., Feige, N., Kokorev, Y. I., Popov, I. Y. and Ebbinge, B. S. 2013. Faltering lemming cycles reduce productivity and population size of a migratory Arctic goose species. – J. Anim. Ecol. 82: 804–813.
- Nolet, B. A., Gyimesi, A. and van Lith, B. 2014. Lower foraging efficiency of offspring constrains use of optimal habitat in birds with extended parental care. – Ibis 156: 387–394.
- Nuijten, R. J. M., Vriend, S. T. J., Wood, K. A., Haitjema, T., Rees, E. C., Jongejans, E. and Nolet, B. A. 2020a. Data from: Apparent breeding success drives long-term population dynamics of a migratory swan. – Dryad Digital Repository, <<http://dx.doi.org/10.5061/dryad.g1jwstqpi>>.
- Nuijten, R. J. M., Wood, K. A., Haitjema, T., Rees, E. C. and Nolet, B. A. 2020b. Concurrent shifts in wintering distribution and phenology in migratory swans: individual and generational effects. – Global Change Biol. 26: 4263–4275.
- Ogilvie, M. A. 1972. Large numbered leg bands for individual identification of swans. – J. Wildl. Manage. 36: 1261–1265.
- Oppel, S., Hilton, G., Ratcliffe, N., Fenton, C., Daley, J., Gray, G., Vickery, J. and Gibbons, D. 2014. Assessing population viability while accounting for demographic and environmental uncertainty. – Ecology 95: 1809–1818.
- Pfister, C. A. 1998. Patterns of variance in stage-structured populations: evolutionary predictions and ecological implications. – Proc. Natl Acad. Sci. USA 95: 213–218.
- Plummer, M. 2003. JAGS: a program for analysis of Bayesian graphical models using Gibbs sampling. – Proc. 3rd Int. Work. Distrib. Stat. Comput. 124: 1–10.
- Poorter, E. P. R. 1991. Bewick's swans *Cygnus columbianus bewickii*, an analysis of breeding success and changing resources. – Ministerie van Verkeer en Waterstaat, Rijkswaterstaat, Directie Flevoland (RWS, FL), Lelystad, 66 p.
- Rees, E. C. 2006. The Bewick's swan. – T & AD Poyser.
- Rees, E. C. and Beekman, J. H. 2010. Northwest European Bewick's swans: a population in decline. – Br. Birds 103: 640–650.
- Rees, E. C., Cao, L., Clausen, P., Coleman, J. T., Cornely, J., Einarsson, O., Ely, C. R., Kingsford, R. T., Ma, M., Mitchell, C. D., Nagy, S., Shimada, T., Snyder, J., Solovyeva, D. V., Tijssen, W., Vilina, Y., Włodarczyk, R. and Brides, K. 2019. Conservation status of the world's swan populations, *Cygnus* sp. and *Coscoroba* sp.: a review of current trends and gaps in knowledge. Wildfowl 2019: 35–72 (Special Issue no. 5).
- Robinson, R. A., Morrison, C. A. and Baillie, S. R. 2014. Integrating demographic data: towards a framework for monitoring wildlife populations at large spatial scales. – Methods Ecol. Evol. 5: 1361–1372.

- Sæther, B. E. and Bakke, Ø. 2000. Avian life history variation and contribution of demographic traits to the population growth rate. – *Ecology* 81: 642–653.
- Saracco, J. F. and Rubenstein, M. 2020. Integrating broad-scale data to assess demographic and climatic contributions to population change in a declining songbird. – *Ecol. Evol.* 10: 1804–1816.
- Schaub, M. and Abadi, F. 2011. Integrated population models: a novel analysis framework for deeper insights into population dynamics. – *J. Ornithol.* 152: S227–S237.
- Schaub, M. and Fletcher, D. 2015. Estimating immigration using a Bayesian integrated population model: choice of parametrization and priors. – *Environ. Ecol. Stat.* 22: 535–549.
- Schaub, M., Reichlin, T. S., Abadi, F., Kéry, M., Jenni, L. and Arlettaz, R. 2012. The demographic drivers of local population dynamics in two rare migratory birds. – *Oecologia* 168: 97–108.
- Shchadilov, Y. M. 2002. Annual variation in the proportion of whooper swans and Bewick's swans breeding in northern European Russia. – *Waterbirds* 25: 86–94.
- Skinner, W. R., Jefferies, R. L., Carleton, T. J., Rockwell, R. F. and Abraham, K. F. 1998. Prediction of reproductive success and failure in lesser snow geese based on early season climatic variables. – *Global Change Biol.* 4: 3–16.
- Smith, P. A., Elliott, K. H., Gaston, A. J. and Gilchrist, H. G. 2010. Has early ice clearance increased predation on breeding birds by polar bears? – *Polar Biol.* 33: 1149–1153.
- Stott, I., Townley, S. and Hodgson, D. J. 2011. A framework for studying transient dynamics of population projection matrix models. – *Ecol. Lett.* 14: 959–970.
- Tavecchia, G., Besbeas, P., Coulson, T., Morgan, B. J. T. and Clutton-Brock, T. H. 2009. Estimating population size and hidden demographic parameters with state-space modeling. – *Am. Nat.* 173: 722–733.
- Taylor, L. U., Woodworth, B. K., Sandercock, B. K. and Wheelwright, N. T. 2018. Demographic drivers of collapse in an island population of tree swallows. – *Condor* 120: 828–841.
- Tempel, D. J., Peery, M. Z. and Gutiérrez, R. J. 2014. Using integrated population models to improve conservation monitoring: California spotted owls as a case study. – *Ecol. Model.* 289: 86–95.
- Trinder, M. N., Hassell, D. and Votier, S. 2009. Reproductive performance in arctic-nesting geese is influenced by environmental conditions during the wintering, breeding and migration seasons. – *Oikos* 118: 1093–1101.
- Tuljapurkar, S. 1990. Population dynamics in variable environments. – Springer-Verlag.
- Turchin, P. 1995. Population regulation: old arguments and a new synthesis. – In: Cappuccino, N. and Price, P. W. (eds), Population dynamics: new approaches and synthesis. Academic Press, pp. 19–40.
- van Eerden, M. R., Drent, R. H., Stahl, J. and Bakker, J. P. 2005. Connecting seas: western Palaearctic continental flyway for water birds in the perspective of changing land use and climate. – *Global Change Biol.* 11: 894–908.
- Visser, M. E., Perdeck, A. C., van Balen, J. H. and Both, C. 2009. Climate change leads to decreasing bird migration distances. – *Global Change Biol.* 15: 1859–1865.
- Weegman, M. D., Bearhop, S., Fox, A. D., Hilton, G. M., Walsh, A. J., McDonald, J. L. and Hodgson, D. J. 2016. Integrated population modelling reveals a perceived source to be a cryptic sink. – *J. Anim. Ecol.* 85: 467–475.
- Wetlands International 2019. Flyway trends analyses based on data from the African-Eurasian waterbird census from the period of 1967–2015. – Wetlands International, Ede, the Netherlands, <<http://iwc.wetlands.org/index.php/aewatrends>>, accessed 10 May 2019.
- Williams, S. E., Shoo, L. P., Isaac, J. L., Hoffmann, A. A. and Langham, G. 2008. Towards an integrated framework for assessing the vulnerability of species to climate change. – *PLoS Biol.* 6: e325.
- Wilson, H. M., Flint, P. L., Powell, A. N., Grand, J. B. and Moran, C. L. 2012. Population ecology of breeding Pacific common eiders on the Yukon-Kuskokwim Delta, Alaska. – *Wildl. Monogr.* 182: 1–28.
- Wood, K. A., Newth, J. L., Hilton, G. M., Nolet, B. A. and Rees, E. C. 2016. Inter-annual variability and long-term trends in breeding success in a declining population of migratory swans. – *J. Avian Biol.* 47: 597–609.
- Wood, K. A., Nuijten, R. J. M., Newth, J. L., Haitjema, T., Vangeluwe, D., Ioannidis, P., Harrison, A. L., Mackenzie, C., Hilton, G. M., Nolet, B. A. and Rees, E. C. 2018. Apparent survival of an Arctic-breeding migratory bird over 44 years of fluctuating population size. – *Ibis* 160: 413–430.
- Wood, K. A., Newth, J. L., Brides, K., Burdekin, M., Harrison, A. L., Heaven, S., Kitchin, C., Marshall, L., Mitchell, C., Ponting, J., Scott, D. K., Smith, J., Tijssen, W., Hilton, G. M. and Rees, E. C. 2019. Are long-term trends in Bewick's swan *Cygnus columbianus bewickii* numbers driven by changes in winter food resources? – *Bird Conserv. Int.* 29: 479–496.
- Zaynagutdinova, E. M., Kouzov, S. A., Batova, P. R., Mikhailov, Y. M. and Kravchuk, A. V. 2019. Spring migration stopovers of swans *Cygnus* sp. in the Russian part of the Gulf of Finland. – *Wildfowl Special Issue* 5: 123–138.
- Zhao, Q., Arnold, T. W., Devries, J. H., Howerter, D. W., Clark, R. G. and Weegman, M. D. 2019. Land-use change increases climatic vulnerability of migratory birds: insights from integrated population modelling. – *J. Anim. Ecol.* 88: 1625–1637.
- Zipkin, E. F. and Saunders, S. P. 2018. Synthesizing multiple data types for biological conservation using integrated population models. – *Biol. Conserv.* 217: 240–250.