



UvA-DARE (Digital Academic Repository)

Did I do that? Expectancy effects of brain stimulation on error-related negativity and sense of agency

Hoogeveen, S.; Schjoedt, U.; van Elk, M.

DOI

[10.1162/jocn_a_01297](https://doi.org/10.1162/jocn_a_01297)

Publication date

2018

Document Version

Final published version

Published in

Journal of Cognitive Neuroscience

[Link to publication](#)

Citation for published version (APA):

Hoogeveen, S., Schjoedt, U., & van Elk, M. (2018). Did I do that? Expectancy effects of brain stimulation on error-related negativity and sense of agency. *Journal of Cognitive Neuroscience*, 30(11), 1720-1733. https://doi.org/10.1162/jocn_a_01297

General rights

It is not permitted to download or to forward/distribute the text or part of it without the consent of the author(s) and/or copyright holder(s), other than for strictly personal, individual use, unless the work is under an open content license (like Creative Commons).

Disclaimer/Complaints regulations

If you believe that digital publication of certain material infringes any of your rights or (privacy) interests, please let the Library know, stating your reasons. In case of a legitimate complaint, the Library will make the material inaccessible and/or remove it from the website. Please Ask the Library: <https://uba.uva.nl/en/contact>, or a letter to: Library of the University of Amsterdam, Secretariat, Singel 425, 1012 WP Amsterdam, The Netherlands. You will be contacted as soon as possible.

UvA-DARE is a service provided by the library of the University of Amsterdam (<https://dare.uva.nl>)

Did I do that? Expectancy effects of brain stimulation on error-related negativity and sense of agency

Suzanne Hoogeveen

University of Amsterdam, The Netherlands

Uffe Schjoedt

University of Aarhus, Denmark

Michiel van Elk

University of Amsterdam, The Netherlands

Abstract

This study examines the effects of expected transcranial stimulation on the error(-related) negativity (Ne or ERN) and the sense of agency in participants who perform a cognitive control task. Placebo transcranial direct current stimulation (tDCS) was used to elicit expectations of transcranially induced cognitive improvement or impairment. The improvement/impairment manipulation affected both the Ne/ERN and the sense of agency (i.e., whether participants attributed errors to oneself or the brain stimulation device): Expected improvement increased the ERN in response to errors compared to both impairment and control conditions. Expected impairment made participants falsely attribute errors to the transcranial stimulation. This decrease in sense of agency was correlated with a reduced ERN amplitude. These results show that expectations about transcranial stimulation impact users' neural response to self-generated errors and the attribution of responsibility – especially when actions lead to negative outcomes. We discuss our findings in relation to predictive processing theory according to which the effect of prior expectations on the ERN reflects the brain's attempt to generate predictive models of incoming information. By demonstrating that induced expectations about transcranial stimulation can have effects at a neural level, that is, beyond mere demand characteristics, our findings highlight the potential for placebo brain stimulation as a promising tool for research.

Keywords: predictive processing, placebo-effect, transcranial brain stimulation, sense of agency, error-related negativity, neuroenchantment

Introduction

How would you react if an external device were stimulating your brain through the skull to affect your performance? Would you be more surprised by errors if the device was supposed to improve your performance? What if the device was programmed to hamper your performance? Would you feel less responsible for the errors you committed? In this study, we examine how people respond to errors when they expect that their performance is affected by transcranial brain stimulation.

New technological developments such as neurofeedback, transcranial magnetic stimulation (TMS) and transcranial direct current stimulation (tDCS) are attracting attention as tools for cognitive enhancement (O'Connor et al., 2012; Sahakian & Morein-Zamir, 2011). Commercial brain devices exploit the widespread belief that humans only use a limited percentage of their brain, which entails the possibility of tapping into unused mental resources (Lilienfeld et al., 2011). Indeed, many consumers express a remarkable faith in these techniques to boost their brain capacity (Rusconi & Mitchener-Nissen, 2014) and even highly educated individuals can for instance easily be convinced of the mind-reading capacities of a sketchy brain imaging device (Ali, Lifshitz, & Raz, 2014).

Besides emphasizing the importance of brain stimulation studies taking into account double-blind control procedures (i.e., including real vs. sham stimulation), the mere 'faith' in brain stimulation techniques also creates interesting possibilities for research on expectancy effects. As such, people's fascination for new brain technologies and the belief in the potential of cognitive enhancement has also been termed 'neuroenchantment'. It has even been suggested that brain stimulation techniques could act as a 'superplacebo', because they optimally exploit people's trust in brain technologies and their motivation to cultivate their own brain potential (Ali et al., 2014; Thibault, Lifshitz, & Raz, 2017).

At the same time, the popular use of brain-based explanations of human behavior increasingly raises ethical issues related to individual responsibility (e.g., "my brain made me do it"; Farah, 2002; Roskies, 2006). These ethical issues become even more prominent with the introduction of neurostimulation techniques that may provide a perfect 'excuse' for the externalization of one's actions (Bostrom & Sandberg, 2009; Heersmink, 2015). People might 'blame their brain' for their thoughts, experiences and behavior.

In the present study, we elicited expectations of transcranially-induced improvement or impairment of performance to assess the effects on prediction error signaling as measured by the error negativity (Ne; Falkenstein et al., 1990, 1991) or error-related negativity (ERN; Gehring et al., 1993; Scheffers & Coles, 2000). The Ne/ERN occurs approximately 100 msec after committing an error and has been localized to the anterior cingulate cortex (ACC; Gehring & Fencsik, 2001; van Veen & Carter, 2002).¹ ACC activity is assumed to be proportional to the likelihood of committing er-

¹Although there has been discussion on the precise nomenclature of this ERP component (see for instance: Falkenstein et al., 1990; Gehring et al., 1993), there is agreement that Ne and ERN denote the same component (Falkenstein et al., 2000). Throughout this paper we will refer to the negative peak component following an error as the ERN.

rors (Alexander & Brown, 2010) and as such, the ERN reflects violated expectations of responding correctly in choice-tasks (Holroyd & Coles, 2002) with increased ERN amplitudes for errors that are unexpected (Holroyd et al., 2003, 2009; Jessup et al., 2010; Oliveira et al., 2007; Yasuda et al., 2004). In the present study, we hypothesized that expectations about improved vs. impaired cognitive performance through transcranial stimulation, should have a directionality-specific effect on the ERN amplitude (i.e., resulting in a stronger vs. reduced ERN amplitude respectively).

Brain stimulation devices not only affect expectations about performance, they also provide users with the opportunity to attribute unexpected and undesired outcomes to an external cause. We know that cues of external causal factors can moderate the sense of agency over internally generated actions (Chambon et al., 2014; Wegner & Wheatley, 1999), and that such misattributions have been demonstrated in contexts associated with strong expectations, e.g., for actions under hypnosis (Polito et al., 2013; Woody & McConkey, 2003) and in response to performance enhancing placebos (Clifasefi et al., 2007). Notably, misattributions of agency occur more often in response to negative outcomes, compared to positive or neutral outcomes (Swiney & Sousa, 2013), which may reflect a self-serving bias (Mezulis et al., 2004). Negative outcomes are therefore particularly relevant for studying the attribution process in response to expected performance improvement or impairment. In the present study, we therefore assessed whether expectations about transcranial stimulation would affect participants' sense of agency indicated by the extent to which unexpected errors would be attributed to the brain stimulation device.

In summary, we manipulated participants' expectations regarding transcranial stimulation using a within-subjects design, by instructing participants that the brain stimulation would either result in improved, impaired, or unaffected cognitive performance on a cognitive control task (i.e., the Eriksen Flanker task). We hypothesized that expectations about improvement would result in a stronger ERN amplitude in association with errors. Expectations of impaired performance on the other hand, should result in a reduced ERN amplitude in response to errors. With respect to the sense of agency, we hypothesized that expectations of impaired performance should make participants more likely to externalize errors to the brain stimulation device. Exploratorily, we investigated whether a decreased sense of agency (i.e., attributing errors to the brain stimulation device) was associated with reduced ERN amplitudes, to examine whether the strength of prediction error signaling was related to the external attribution of errors. The materials, data and analysis scripts used for this study are available on the Open Science Framework (see <https://osf.io/tzke3>).

Methods

Participants

Initially, 31 healthy participants participated in the experiment (mean age = 32.3 years, range = 18-64 years, 24 women) who received a financial remuneration. Participants were recruited through a local newspaper advertisement (asking people if they would like to participate in a study using new brain stimulation technology to experience the hidden powers of the human mind) as well as through the online participant pool of the University of Amsterdam (for nonpsychology students). Exclusion criteria were a history of brain related abnormalities and past knowledge of or experience

with tDCS. Due to equipment malfunction and/or excessive signal loss, 8 participants were excluded from analyses, leaving a final sample of 23 participants (mean age = 28.9 years, range = 18-61 years, 18 females). Specifically, for the first 5 participants, the tDCS apparatus was not switched off after the sham stimulation. However, it turned out that even though it was not stimulating during the experiment, the apparatus kept leaking current, which heavily distorted the EEG signal. Therefore, these first 5 participants had to be excluded from analyses. The other 3 excluded participants were identified upon visual inspection of the EEG signal, prior to the calculation of the ERN. Post-hoc power-analyses revealed that even after exclusion, the final sample of 23 achieved a power of 90% for the smallest effect of interest (i.e., the ERN-effect). The study was approved by the local ethics committee at the Psychology Department of the University of Amsterdam (Project 2016-SP-6649) and all participants were treated in accordance with the Declaration of Helsinki.

Design and Task

A within-subjects design was used with the following expectancy conditions: improvement condition, impairment condition, and a neutral (control) condition. An inactive tDCS device (NeuroConn GmbH) was used to increase the credibility of the experimental manipulation. Dependent variables included the ERN amplitude and the sense of agency over committed errors. The order of the different expectancy conditions was counterbalanced across participants, resulting in six different possible sequences of experimental blocks.

The Flanker task (Eriksen & Eriksen, 1974) was used, in which participants were required to report the direction of a centrally presented arrow, to elicit unintended errors, consisting of 8 blocks of 20 trials, with 50% congruent trials (central arrow pointing in the same direction as distractors, i.e., <<<<<<) and 50% incongruent trials (central arrow pointing in the opposite direction as distractors, i.e., <<>><<), which were repeated over the different expectancy conditions. The task was presented on a 60cm computer screen (1920 x 1080 pixels) placed at approximately 40cm from the participant's eyes and was programmed using Presentation software (Neurobehavioral Systems, Inc.). Stimuli were presented in black (font size 36) on a white background. In order to increase difficulty, the contrast of the central target arrow was reduced (RGB color 235, 235, 235) compared the surrounding distractors.

Prior to the experimental phase, an individual level of difficulty was determined in a practice phase, to account for large individual differences in accuracy on the Flanker task. This was done by adjusting the response interval (i.e., the window of opportunity of response) to ensure accuracy was within a 60-80% range, in order to obtain a sufficient number of error trials for the calculation of the ERN. The interval was initially fixed at 1000 msec and was shortened with 100 msec after 10 trials if accuracy was higher than 80% or was extended with 100 msec if performance was lower than chance level (50% correct). Thus, the response interval was kept the same if accuracy was within the 60-80% range. If participants failed to respond within the set interval (miss), they received feedback to respond faster. Both errors (incorrect key-press) and misses (no key-press) counted towards the reduction of accuracy. Adjustment continued until performance in 2 consecutive blocks fell within the 60-80% range, upon which the experimental phase started. During the experimental phase, accuracy was evaluated after each block and adjusted in steps of 50ms, following the same

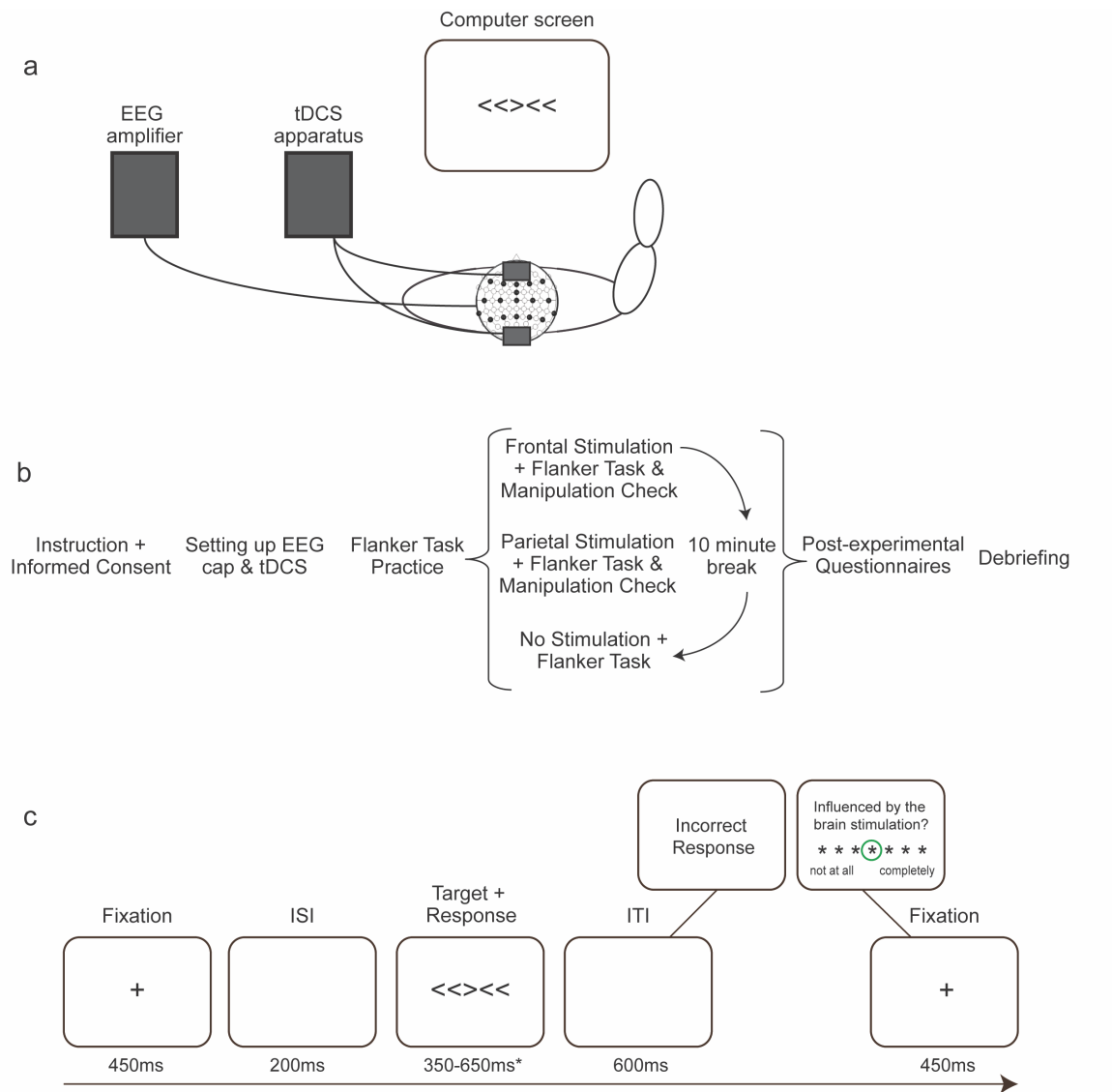
criteria as during the practice phase. This adjustment was maintained during the experimental phase, in order to eliminate the potential confound that eventual differences in ERN amplitude between conditions could be attributed to the probability of making an error (Holroyd & Coles, 2002). Crucially, by keeping the accuracy stable across conditions, any performance effects would be represented in difference in reaction times, and thus in the individually-set response interval. However, this response interval did not significantly differ between conditions and did thus not confound any condition-effects, $F(2, 44) = 0.55$, $p = .580$. In the experimental phase, each error was followed by a feedback screen, in which the participant was required to indicate to what extent the response was influenced by the brain stimulation on a 7-point scale ranging from “not at all” to “completely”, assessing the sense of agency over the error (see trial overview in Figure 1c). This 1-7 scale was recoded in order for high and low values to correspond to high and low sense of agency, respectively.

Expectancy Manipulation

Participants were told that the study aimed to investigate the effect of a *completely safe brain stimulation device (tDCS) that has the power to activate the brain’s unused potential*. The alleged effects of stimulation were strongly emphasized and the differential effects of the stimulation conditions were explained multiple times. First during a telephone screening and then upon arrival at the lab the experimental manipulations were verbally disclosed. The researcher verbally repeated the expected effects at the start of each block, and also written information on the induced effects were presented on screen. In the improvement condition the instruction was as follows: “*In this session frontal tDCS is used, which can improve performance. The stimulation releases additional neural activity in your frontal cortex, which makes the neural processing more efficient if you are sufficiently sensitive to the stimulation. The frontal stimulation can make you feel more energized and active.*” Impairment condition: “*In this session parietal tDCS is used, which can impair performance. The stimulation reduces the neural activity in the frontal cortex, which makes the neural processing less efficient if you are sufficiently sensitive to the stimulation. The parietal stimulation can make you feel more tired and dazed.*” Control condition: “*In this session, no stimulation is used.*” The credibility of the manipulation was enhanced in multiple ways. First, a telephone screening with exclusion criteria based on a standard tDCS screening form was applied, screening participants for a history of epilepsy, severe concussion, psychotropic drugs, pregnancy etc.. Second, an actual neuroConn DC stimulator tDCS device and electrodes were used and sham stimulation (consisting of a 20 seconds ramping up of the current as is common practice in real tDCS studies) was administered at the beginning of each stimulation block, so that participants would actually experience a slightly tingling sensation on their head. Lastly, at the end of the experiment, participants completed a questionnaire on the possible side-effects of tDCS.

Procedure

After the study overview and experiment were elaborately described, the participants completed the Flanker task as described above, starting with a practice phase to set the individual level of difficulty. Subsequently, each participant completed the Flanker task in each stimulation condition



*The response window was individually adjusted and ranged between 350ms and 650ms.

Figure 1. Overview of the (a) experimental set-up, (b) procedure and (c) trial of the used Flanker Task. Upon arrival (a) participants were seated at approximately 80cm from the screen and equipped with the EEG cap and tDCS electrodes. The experimental procedure (b) started with the participants receiving verbal and written instructions about the task and expectancy manipulation and signing an informed consent. EEG and tDCS electrodes were prepared, followed by a practice session of the Flanker task (without stimulation). In the actual test phase, participants completed the Flanker task three times (in randomized counterbalanced order), each time first being informed about the specific stimulation condition (i.e. frontal: improvement; parietal: impairment; no stimulation: no effect). ‘Active’ stimulation sessions were followed by 3 manipulation check questions on experience of the tDCS. At the end of the experiment participants completed the post-experimental questionnaires and were debriefed about the placebo manipulation. A trial in the task (c) consisted of a fixation screen (450 msec), a blank screen (inter-stimulus interval; 200 msec), the target presentation and participants had to respond within the individually determined response interval by pressing the right or left control key with their right or left index finger, respectively. This was followed by an inter-trial interval (600 msec). If the given response was incorrect, a feedback screen appeared and participants had to rate to what extent they believed the error was caused by the brain stimulation device (on a 7-point scale).

(i.e., three times) with only the information on the effects of the alleged stimulation differing between conditions. After the two stimulation blocks, participants answered three questions to report their experience during the tDCS, which served as condition-specific manipulation check items (“*To what extent do you feel the tDCS affected your performance on the Flanker task?*” and “*To what extent do you think you have a certain sensitivity for brain stimulation?*”), both measured on a 5-point scale from “not at all” to “very much”) as well as to assess subjective performance (“*To what extent do you feel your performance on the Flanker became better or worse due to the tDCS?*”, measured on a 5-point scale from “worse” to “better”). This was followed by a 10-minute break to ‘ensure the stimulation had completely worn off’ (see Figure 1 for experimental set-up, procedure and task).

After completion of all three conditions, participants filled out the exit questionnaires to assess demographics, their experience during the experiment (as an overall manipulation check; see below) and possible tDCS side-effects. Additionally, we included a Dutch translation of the Absorption Scale (Tellegen & Atkinson, 1974) with 34 items (Cronbach’s $\alpha = .93$) and a translation of the Locus of Control Scale (Rotter, 1966) with 11 items consisting of a pair of statements reflecting an internal vs. external locus of control², as both these measures have been related to individual differences in susceptibility to suggestion (Andersen, Schjoedt, Nielbo, & Sørensen, 2014; Groth-Marnat & Pegden, 1998; Paddock et al., 1998).

The overall manipulation check items assessed the influence (“*To what extent did you experience the influence of tDCS on the neuronal energy in your brain?*”) and the efficacy (“*To what extent do you consider tDCS an effective method to enhance or impair brain functioning?*”) of the stimulation. These items were measured on a 5-point scale and ranged from “not at all” to “very much” (see Table 2 for an overview of the condition-specific and overall manipulation check items). In addition, participants had to describe the purpose of the study in their own words. Finally, participants were carefully debriefed on the true purpose of the study.³

Electrophysiological Recordings

EEG was recorded over the entire scalp using 63 electrodes according to the 10/20 system. The data was sampled at 2048Hz using BioSemi’s Active-Two System (BioSemi, Amsterdam, Netherlands). Horizontal and vertical EOG were measured with electrodes at the outer canthi and above and below the participant’s dominant eye. The frontal tDCS electrode (consisting of a wet 3x3cm sponge electrode) was positioned on top of the EEG cap at the location corresponding to electrode AFz (which was omitted from the EEG) and the parietal tDCS electrode (3x3cm) was positioned in the neck below the EEG cap. Before the start of the experiment, sham tDCS was administered with a neuroConn DC stimulator, including the ramping up for 20 seconds with a 1mA current stimulation with the anodal electrode placed over the prefrontal cortex and the cathodal electrode

²Analysis indicated that the reliability of the LoC scale was relatively low (Cronbach’s $\alpha = .52$). Deletion of the three items with the lowest loading on the first factor in a factor analysis (PCA) resulted in a moderately reliable Locus of Control scale ($\alpha = .65$) with 8 items.

³Specifically, they were explained that “*your brain was not actually stimulated and that all experiences you had were self-generated. Placebo has been proven to be a powerful effect for instance in medical practice and we are now looking at the effects of placebo brain stimulation on cognitive performance. We also looked at the influence on brain processes to assess the underlying mechanisms of the placebo effect. The information you received at the beginning of the experiment is factually accurate. tDCS is indeed a method to activate and deactivate the brain and influence performance. We did however not do this in the current experiment*”.

in the neck. This sham stimulation was repeated at the beginning of the two stimulation blocks, in order to enhance the credibility of the manipulation. After 20s the device was switched off for the remainder of the block.

The EEG data were down-sampled offline to 256Hz, re-referenced to the average signal across all electrodes and band-pass filtered between 0.16Hz and 30Hz. Response-trials (miss-trials were excluded from analysis) were segmented into epochs from 100 msec before to 300 msec after the button-press. The mean activity in the window from -100 msec to 0 msec prior to response served as baseline and was subtracted from each data point. Data was corrected for ocular movements using the algorithm implemented in Brain Vision Analyzer (Gratton, Coles, & Donchin, 1983). A semiautomatic procedure was used to detect and reject artifacts. The criteria applied were a voltage step of more than $50\mu\text{V}$ between sample points, a voltage difference of $200\mu\text{V}$ within a trial, amplitudes where the signal exceeded the $-100\mu\text{V}$ and $+100\mu\text{V}$ threshold, and a maximum voltage difference of less than $0.5\mu\text{V}$ within a 100 msec interval. Intervals were flagged and manually removed. For the final sample of 23 participants, this processing resulted in an average of 1.3% ($SD = 1.2\%$) of the response-trials being rejected from analysis due to artifacts. Individual event-related potentials (ERPs) were calculated separately for correct and incorrect trials and for each stimulation condition (improvement, impairment, control), resulting in 6 ERPs per participant.

For each incorrect trial, the ERN was quantified as the activity at the peak of the signal, using automatic peak selection for a negative deflation within the predefined time-window ranging from 0 to 150ms, at electrodes FCz and Cz. Additionally, for correct trials, the CRN (correct-response negativity) was extracted in exactly the same way, using the same time-window and electrode sites. As visual inspection revealed the strongest ERN at location FCz (see Figure 2e), in line with existing literature (Falkenstein et al., 2000; Gehring et al., 1993), the ERN peak amplitude at this electrode was used in further analyses. We note however, that selecting electrode Cz yielded similar results as reported in the main analysis in this manuscript.

Statistical Analyses

For the ERP data, a repeated measures ANOVA with condition (i.e., improvement vs. impairment vs. control) and correctness (i.e., correct vs. error trials) as within-subjects factors was performed to validate a main effect of correctness and hence a substantial ΔERN . This ΔERN (i.e., the difference between the ERN and the CRN, which was obtained by subtracting the mean CRN from the mean ERN), is taken to reflect the neural response to errors specifically, and remove the effect of generic response monitoring that is manifested in both ERN and CRN (Simons, 2010). The remaining analyses in this manuscript therefore focused on the ΔERN .

The ΔERN was compared between conditions using Bonferroni-corrected paired t-tests. Similarly, a repeated measures ANOVA with condition (improvement vs. impairment vs. control) as within-subjects factor was performed for the sense of agency, followed by Bonferroni-corrected paired t-tests to investigate post-hoc contrasts. Additionally, the correlation between the sense of agency and ΔERN data was calculated to examine whether attribution of errors was related to the strength of the prediction error signal (i.e., the ΔERN).

The subjectively perceived efficacy of the experimental expectancy manipulation was checked

by comparing (1) the condition-specific manipulation check items between both stimulation blocks and (2) the subjective performance evaluation between both blocks, by using a one-tailed t-test (as we had a priori predictions regarding the directionality of the effects). In addition, to eliminate the possibility that differences in objective performance (i.e., differences in accuracy or speed of responding) could eventually underlie the effects that we observed, two repeated measures ANOVAs with congruency (congruent vs. incongruent trials) and condition (improvement vs. impairment vs. control) as within-subjects factors were conducted with the percentage of errors and reaction times (RTs) as dependent measures.

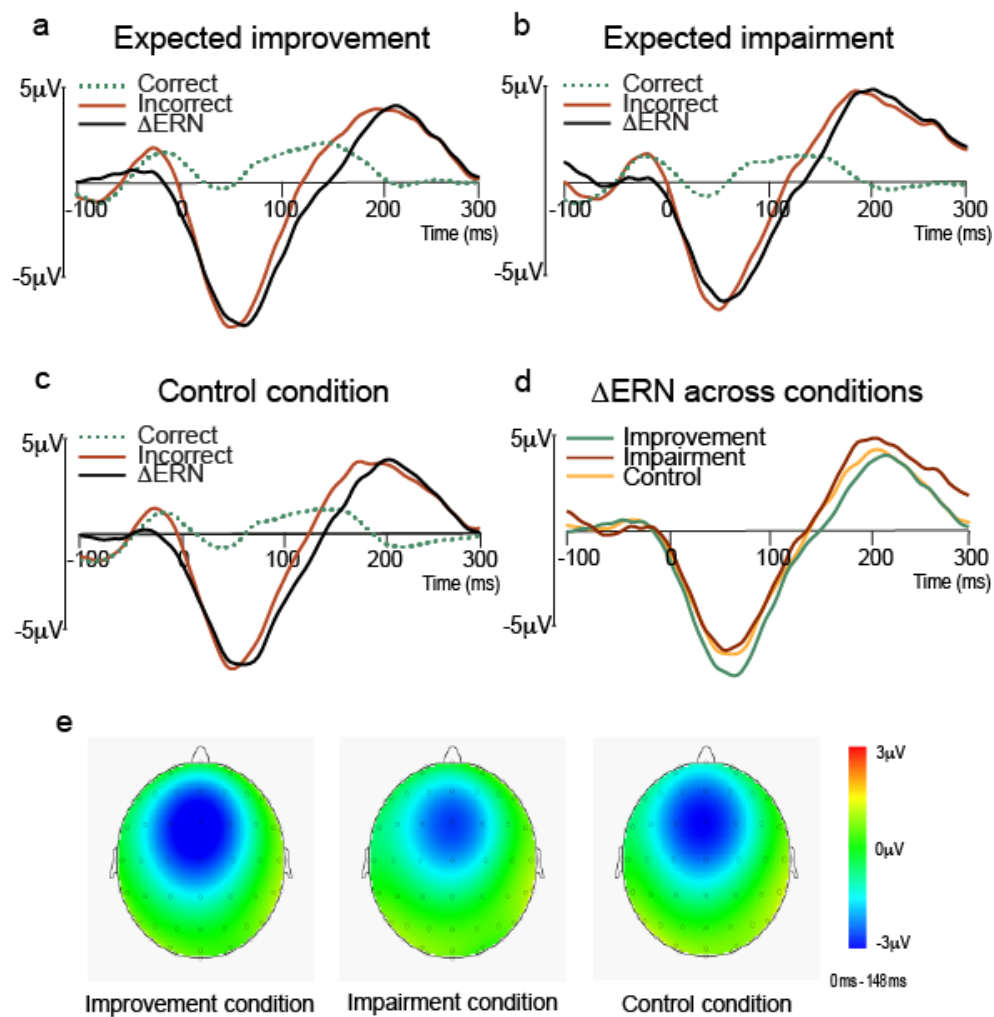


Figure 2. Response-locked ERPs at FCz following correct (dotted lines) and incorrect responses (gray lines) on the Flanker task and the difference between both responses (Δ ERN; black lines) for participants in the (a) improvement, (b) impairment and (c) control conditions, showing a clear ERN response across all conditions. Comparison of Δ ERN waveforms (d) in the improvement, impairment and control condition showed a larger Δ ERN amplitude for the improvement compared to the impairment and control condition. Voltage topographical maps (e) of the Δ ERN-related activity within the 0-150 msec time-window per condition, showing the strongest activity at the location of electrode FCz.

Results

Confirmatory Results

Error-related negativity (ERN). The ERPs for the different experimental conditions are represented in Figure 2 and Figure 3a. To study the effects of our expectancy manipulation on the ERN in response to error trials on the Flanker task, we first conducted a repeated measures ANOVA with condition and correctness as within-subject factors. As expected, a main effect of correctness was found, with the ERN amplitude being significantly larger than the CRN amplitude, $F(1, 22) = 100.77, p < .001, \eta_p^2 = .821$. The main effect of condition on the ERP amplitude was not significant $F(2, 44) = 2.96, p = .062$. Importantly, we found a significant interaction effect between condition and correctness, $F(2, 44) = 6.79, p = .003, \eta_p^2 = .236$, suggesting that the Δ ERN differed between the different expectancy manipulations. Separate analyses for correct and error trials (i.e., the CRN and ERN, respectively) indicated that the interaction effect was driven by error trials, as an ANOVA for the ERN indeed showed a significant effect for condition, $F(2, 44) = 5.05, p = .011, \eta_p^2 = .187$, whereas the ANOVA for the CRN did not, $F(2, 44) = 1.93, p = .157$. Notably, in addition to being non-significant, the direction of amplitudes for the conditions was different for the CRN, namely impairment < improvement < control, rather than improvement < control < impairment as found for the ERN. To further explore this interaction-effect, the Δ ERN was directly compared between conditions by means of three post-hoc Bonferroni-corrected paired t-tests. We found a significant difference between the improvement ($M = -7.90V$) and impairment ($M = -6.03V$) condition in Δ ERN amplitude, $t(22) = -3.64, p = .004$, Cohen’s $d = 0.76$, as well as between the improvement and the control condition ($M = -6.69V$), $t(22) = -2.66, p = .043$, Cohen’s $d = 0.55$. No difference was found between the impairment and the control condition in the ERN amplitude, $t(22) = 1.17, p = .77$. These findings indicate that participants showed a stronger neural response to violations of enhanced performance expectations, compared to impaired performance expectations or unaffected performance expectations. Following up on the most relevant analysis – the Δ ERN between conditions, we computed Bayes factors to quantify the evidence for the expectancy effect on the Δ ERN using the statistics software JASP (JASP Team, 2018).

Table 1

Descriptive statistics for subjective experience of performance, sense of agency and objective Flanker performance

		Improvement	Impairment	Control
Subjective performance ^a		3.09 (0.79)	2.35 (0.76)	
Sense of agency ^b		5.09 (1.16)	4.04 (1.24)	6.82 (0.35)
Objective performance				
Errors (%)	Congruent	1.6 (1.74)	1.5 (1.81)	1.4 (1.97)
	Incongruent	25.5 (9.36)	25.5 (7.34)	27.9 (8.60)
Reaction times	Congruent	337 (37.6)	339 (35.6)	339 (36.0)
	Incongruent	396 (43.1)	399 (43.1)	397 (46.4)

Note. Displays mean values, with standard deviations given in parentheses.

^aMeasured on a 5-point scale. ^bMeasured on a 7-point scale.

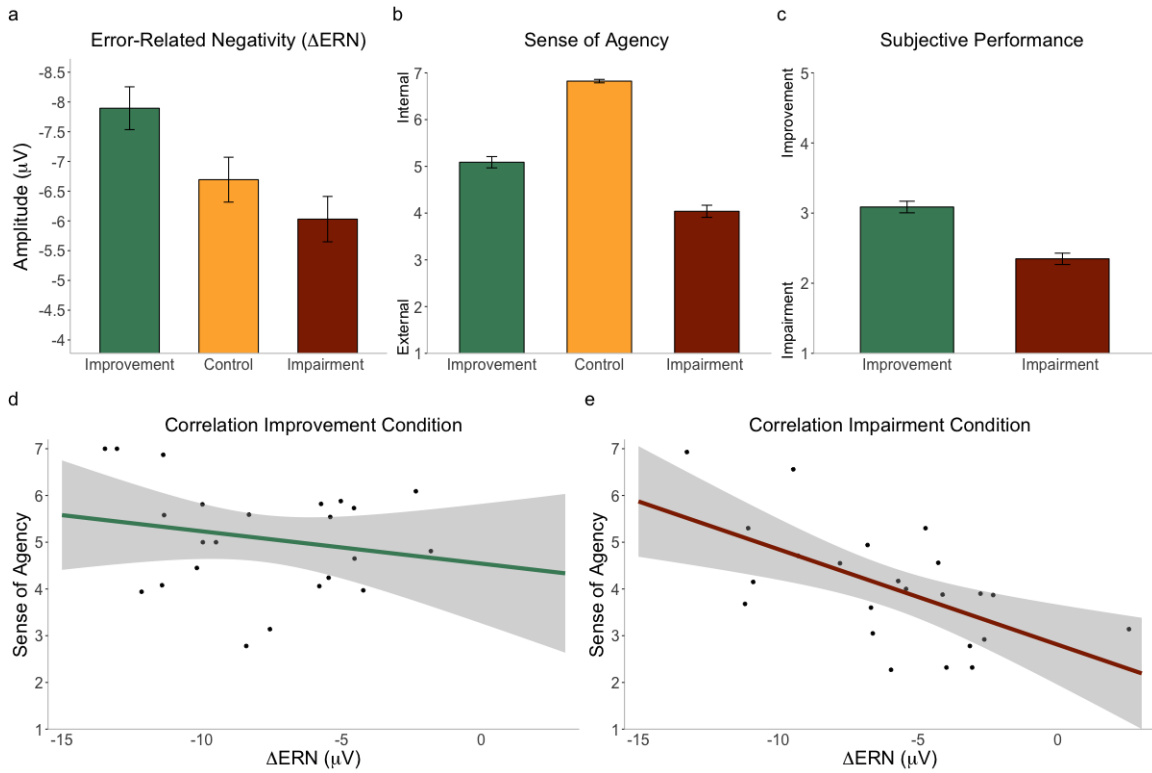


Figure 3. Graphs depicting the main results per condition. Error-related negativity (Δ ERN) amplitudes (a), reflecting the strongest prediction error response in the improvement compared to the control and impairment condition. Sense of agency over committed errors (b), showing a lowered sense of agency in the experimental conditions, and especially more external attribution (i.e., lower sense of agency) in the impairment condition, compared to the improvement condition. Subjective performance effects of the transcranial stimulation (c), demonstrating the difference in subjectively experienced performance as a function of the expectancy manipulation. Scatterplots of the Δ ERN and the sense of agency in the improvement (d) and impairment (e) condition, displaying the absence of a correlation in the former, and a significant negative correlation in the latter. Specifically, in the impairment condition, a stronger Δ ERN amplitude was associated with more internal attributions (i.e., higher sense of agency) and a smaller Δ ERN amplitude with more external attributions (i.e., lower sense of agency). In this figure, the Δ ERN is represented as the ERN difference wave (i.e., incorrect - correct trials). Error bars indicate standard errors.

That is, we used a Bayesian repeated measures ANOVA with default Jeffreys-Zellner-Siow (JZS) priors for ANOVA, using r-scale of fixed effects (condition) of 0.5 and r-scale of random effects (subject; within factor) of 1 (Rouder, Morey, Speckman, & Province, 2012; Wetzels, Grasman, & Wagenmakers, 2012). The results indicated strong evidence for the effect of expectancy condition on the Δ ERN; $BF_{10} = 13.52$, with post-hoc test revealing $BF_{10} = 25.65$ for improvement vs. impairment, $BF_{10} = 3.63$ for improvement vs. control, and $BF_{10} = 0.40$ for impairment vs. control, reflecting strong evidence for difference, moderate evidence for difference and anecdotal evidence against difference in Δ ERN, respectively (Lee & Wagenmakers, 2014).⁴

Sense of Agency. A significant main effect of condition on sense of agency was observed, $F(2, 44) = 59.94$, $p < .001$, $\eta_p^2 = .731$ ($BF_{10} = 2.42 \times 10^{12}$; extreme evidence for the expectancy condition hypothesis), with post-hoc tests revealing that all expectancy conditions significantly differed from each other (see Figure 3b); the sense of agency was significantly higher in the control

⁴Note that the Bayes factor for the post-hoc tests is uncorrected for multiple comparisons.

Table 2
Overview of the manipulation check items, per condition and overall

Condition-specific manipulation check items		Improvement	Impairment
Influence	<i>To what extent do you feel the tDCS affected your performance on the Flanker task?</i>	3.00 (0.66)	3.32 (0.87)
Sensitivity	<i>To what extent do you think you have a certain sensitivity for brain stimulation?</i>	3.00 (0.79)	3.17 (0.83)
Subjective performance	<i>To what extent do you feel your performance on the Flanker became better or worse due to the tDCS?</i>	3.09 (0.79)	2.35 (0.76)
Overall manipulation check items			
Influence	<i>To what extent did you experience the influence of tDCS on the neuronal energy in your brain?</i>	3.26 (1.01)	
Efficacy	<i>To what extent do you consider tDCS an effective method to enhance or impair brain functioning?</i>	3.13 (0.76)	

Note. Displays mean values, with standard deviations given in parentheses. Measured on a 5-point scale.

condition ($M = 6.82$, $SD = 0.35$)⁵ than in the improvement condition ($M = 5.09$, $SD = 1.16$), $t(22) = 6.99$, $p < .001$, Cohen’s $d = 1.46$ ($BF_{10} = 32565$; extreme evidence for the difference hypothesis) and than in the impairment condition ($M = 4.04$, $SD = 1.24$), $t(22) = 9.87$, $p < .001$, Cohen’s $d = 2.06$ ($BF_{10} = 7.41 \times 10^6$; extreme evidence for the difference hypothesis; see Table 1 for descriptives). Crucially, the sense of agency in the impairment condition was significantly lower than in the improvement condition $t(22) = -4.41$, $p < .001$, Cohen’s $d = 0.92$ ($BF_{10} = 134.4$; extreme evidence for the difference hypothesis).

Manipulation Checks. Our data indicated that the placebo tDCS manipulation was successful, as the mean scores on the overall manipulation check items were $M = 3.26$ ($SD = 1.01$) for tDCS influence and $M = 3.13$ ($SD = 0.76$) for tDCS efficacy, indicating that participants judged the brain stimulation to have exerted ‘moderate’ to ‘substantial’ influence on their performance and be moderately to substantially effective as a method to enhance or impair brain functioning.

Importantly, the extent of the experienced influence and sensitivity did not differ between the improvement ($M = 3.00$, $SD = 0.66$; $M = 3.00$, $SD = 0.79$) and impairment ($M = 3.32$, $SD = 0.87$; $M = 3.17$, $SD = 0.83$) condition, as indicated by comparison between the condition-specific manipulation check items after the stimulation blocks on influence, $t(22) = -1.43$, $p = .167$ and on sensitivity, $t(22) = -0.85$, $p = .406$, indicating that participants felt equally influenced by and sensitive to the tDCS in both the improvement and impairment condition (see Table 2).

As expected, the items assessing subjective experience of improvement / impairment in performance showed a significant difference between experimental conditions, $t(22) = 3.36$, $p = .001$, Cohen’s $d = 0.70$, indicating that in the improvement condition participants rated their sub-

⁵The fact that the sense of agency rating was not exactly 7.0 might seem strange, as there was no external influence to reduce the sense of agency. Indeed, only ten participants had a mean agency rating in the control condition of exactly 7.0. Of the other thirteen, eleven pressed 6 a few times, either by accident or on purpose, perhaps because they still felt the wires were “doing something”. Importantly, only two participants had an average below 6.0 in the control condition, which can be attributed to the fact that the default indicator started at 4 and these people realized only about halfway through the block that they were to shift the indicator for “no influence of the stimulation”. Excluding these two participants did not change any results of the main analyses (i.e., ERN, sense of agency).

Table 3

Pearson correlations for Δ ERN-amplitude, sense of agency, subjective experience of performance modulation, experienced tDCS influence and subjective sensitivity for tDCS displayed for the improvement (dark gray; above diagonal) and impairment (light gray; below diagonal) conditions.

	Δ ERN	Sense of agency	Subjective performance	Experienced influence	Subjective sensitivity
Δ ERN	–	–0.206	0.064	–0.063	–0.088
Sense of agency	–0.604**	–	0.232	–0.230	–0.129
Subjective performance	–0.145	0.432*	–	0.000	–0.072
Experienced influence	0.430*	–0.618**	–0.587**	–	0.189
Subjective sensitivity	0.159	–0.258	–0.590**	0.659***	–

Note. Intercorrelations for the improvement condition are presented above the diagonal, and intercorrelations for the impairment condition are presented below the diagonal.

* $p < .05$, ** $p < .01$, *** $p < .001$

jective performance as better ($M = 3.09$, $SD = 0.79$) compared to the impairment condition ($M = 2.35$, $SD = 0.76$), on a scale ranging from impairment (1) to improvement (5) (see Table 1 and Figure 3c).

Exploratory / Additional Results

Sense of Agency & Δ ERN. In the impairment condition, committing errors and attributing these to the brain device is congruent with participants’ expected effects of the brain stimulation (as opposed to the improvement condition in which committing errors contradicts the expected effect of brain stimulation). A significant negative correlation between the sense of agency and the Δ ERN amplitude was found in the impairment condition, $r(21) = -.60$, $p = .002$ (two-tailed), indicating that an internal sense of agency was related to a larger Δ ERN amplitude and an external sense of agency to a smaller Δ ERN amplitude (see Figure 3e). No such correlation was found in the improvement condition $r(21) = -.21$, $p = .35$ (two-tailed; see Figure 3d), or in the control condition, $r(21) = .16$, $p = .46$ (two-tailed). Although in the same direction, the correlation coefficients for the impairment and improvement condition were found to differ significantly, using Fisher’s Z-transformation for comparison of non-overlapping correlations based on dependent groups, $z = 1.97$, $p = .049$ (Raghunathan et al., 1996). Moreover, analysis using Bayes factors further corroborates the respective presence and absence of a correlation between Δ ERN and sense of agency in the impairment and improvement condition; for the impairment condition $BF_{10} = 20.55$, indicating strong evidence in favor of the correlation hypothesis, whereas in the improvement condition $BF_{10} = 0.394$ which reflects anecdotal evidence for the null-hypothesis assuming no relation between Δ ERN and sense of agency.

Additionally, we exploratorily assessed the correlations between the Δ ERN, sense of agency, subjective performance and condition-specific manipulation check items on experienced influence and subjective sensitivity for tDCS. As can be seen in Table 3, most items were correlated in the impairment condition, indicating that with regard to suggestions of impairment, participants who felt most influenced by the stimulation, also had a larger Δ ERN amplitude, lower sense of agency over errors, judged their performance to be worse and indicated to be more sensitive to the effects of

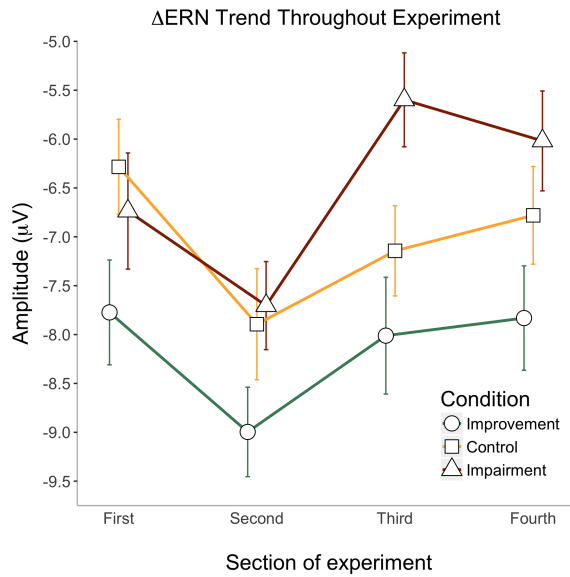


Figure 4. Graphical representation of the temporal development of the Δ ERN throughout the experiment per condition, showing the absence of an interaction between section and condition, i.e., the Δ ERN amplitude remains higher in the improvement condition relative to the control and impairment condition.

tDCS, relative to participants that felt less influenced by the tDCS. In the improvement condition, none of these correlations appeared.

Temporal Δ ERN effects. In order to assess the temporal development of the Δ ERN over the course of the experiment, we calculated the Δ ERN per two blocks (i.e., 4 sections) for each condition and each participant.⁶ The results revealed no main effect for section of the experiment, $F(2.03, 44.47) = 1.46$, $p = .244$ (Greenhouse-Geisser corrected for violation of the assumption of sphericity), nor an interaction between section and condition, $F(6, 132) = 0.36$, $p = .903$. Figure 4 illustrates the absence of this main effect and interaction.

Objective Performance Effects. The absence of objective performance differences between conditions was confirmed by additional analysis of the behavioral data (see Table 1 for descriptives). With regard to errors, there was no main effect for condition, $F(2, 44) = 1.79$, $p = .178$, indicating that participants performed equally well in the improvement, impairment and control condition – logically, as the task difficulty was kept constant. The main effect for flanker-congruency was significant, $F(1, 22) = 241.12$, $p < .001$, $\eta_p^2 = .916$, indicating that people made more errors on incongruent (26.3%) than on congruent trials (1.5%), but there was no significant interaction effect between condition and congruency, $F(2, 44) = 2.55$, $p = .09$ (BF_{01} interaction = 8.26; moderate evidence for the null-hypothesis). Moreover, the ratio between errors (average: $M = 13.9\%$, $SD = 4.0\%$) and misses (average: $M = 15.0\%$, $SD = 3.7\%$) did not significantly differ between conditions, $F(1.50, 33.03) = 1.63$, $p = .215$ (the Greenhouse-Geisser correction was used, as Mauchly’s test indicated that the assumption of sphericity was violated). Similarly, for

⁶We note that in order to extract the information for the four sections, we had to reanalyze the data in Brain Vision Analyzer. Due to a different distribution of trials over conditions, the results of this exploratory analysis may therefore differ slightly from the main analyses, although the conclusions remain the same (i.e., a significant effect for condition; $F(2, 44) = 6.21$, $p = .004$, $\eta_p^2 = .220$).

the reaction times (RT), the repeated measures ANOVA revealed no main effect for condition, $F(2, 44) = 0.30$, $p = .739$, and a strong effect for congruency, $F(1, 22) = 360.23$, $p < .001$, $\eta_p^2 = .942$, showing that people were significantly slower on incongruent (397 msec) compared to congruent (339 msec) trials. There was again no interaction effect between condition and congruency, $F(2, 44) = 0.24$, $p = .786$ (BF_{01} interaction = 23.81; strong evidence for the null-hypothesis). These behavioral results effectively rule out the potential confound that performance differences (i.e., RTs or accuracy) could have contributed to our effects.

Order Effects. When the between-subjects factor of order of expectancy conditions was added to the ANOVAs for the ΔERN or the sense of agency, no significant effects were found. Specifically, for the ΔERN amplitude, the main effect of order was non-significant, $F(5, 17) = 1.50$, $p = .242$, as was the interaction effect between ΔERN and order, $F(10, 34) = 1.67$, $p = .346$. For the sense of agency, there was marginally significant main effect of order, $F(5, 17) = 2.71$, $p = .056$. Crucially, the interaction between condition and order was non-significant, $F(10, 34) = 1.21$, $p = .376$.

Individual Difference Measures. Individual differences in level of absorption and locus of control as measured by the absorption scale and the locus of control scale did not correlate with any of the main dependent measures (i.e., ΔERN , sense of agency) nor with the subjective experience of performance and objective performance. Further analyses on individual differences were therefore not conducted.

Discussion

In the present study, we manipulated expectations of transcranial stimulation to investigate expectancy effects on the error-related negativity (ERN) and the sense of agency, by suggesting improved, impaired, or no cognitive performance modulation. In doing so, our study was the first to relate placebo brain stimulation to neural prediction error signaling.

In both the impairment and the improvement condition, participants were more likely to falsely attribute errors to the brain stimulation device. As expected, the misattribution of agency was strongest when the device was supposed to hamper performance, corroborating previous evidence that misattributions of agency are especially prominent when potential external sources can intuitively be used as an ‘excuse’ for failures (Aarts et al., 2005; Moore et al., 2009). That is, the stimulation device may give users the experience of being less responsible for unexpected negative outcomes, paralleling findings for actions performed under hypnosis (Polito et al., 2013; Woody & McConkey, 2003) and expected thought insertion (Swiney & Sousa, 2013). Admittedly, in the improvement condition, the rating of one’s sense of agency over *errors* was more ambiguous, as committing errors countered the expected positive effect of the stimulation. This ambiguity in the improvement condition poses a limitation on the present study, and we suggest that future studies might additionally assess agency over successes rather than just failures, to more consistently investigate feelings of responsibility for successful performance under placebo brain stimulation.

Our findings in the impairment condition, nevertheless, suggest that the externalization of responsibility is not merely a post-hoc attribution. That is, when external attribution of errors was congruent with the raised suggestions (i.e., expected impairment), the tendency to misattribute errors to the brain stimulation was found to be associated with a decreased ERN amplitude. This

suggests that prior expectations about external influences affect error processing already at a very early stage and thereby this finding corroborates previous evidence that the ERN amplitude is affected by the perceived responsibility for and concern about one's actions, as has for instance been shown for free will manipulations (Rigoni et al., 2013) and religious priming (Good et al., 2015). Interestingly though, we did not find that the ERN was lower at the group level in the impairment condition compared to the control condition. Rather, the degree to which behavioral errors elicited prediction errors, appeared to depend on the extent to which individuals externalized agency to the stimulation device.

In the improvement condition, on the other hand, there seemed to be a general expectancy effect. That is, when expecting fewer errors, violation of expectations (i.e., still committing errors) elicited stronger neural prediction error signals. It has been suggested that the ERN reflects a violation of expected positive outcomes (Compton et al., 2007; Holroyd et al., 2003, 2004, 2009; Wessel et al., 2012; Yasuda et al., 2004) and accordingly our findings indicate a stronger prediction error signal when expectations about enhanced cognitive performance are violated. More broadly, our findings corroborate the error-likelihood hypothesis of the ACC, which posits that ACC activity is proportional to the likelihood of errors (Alexander & Brown, 2010; Jessup et al., 2010).

We argue that these findings can be accounted for by the predictive processing model (Buchel et al., 2014; Clark, 2013; Kilner et al., 2007), according to which placebo effects can be elicited when prior expectations are high and when sensory data (moderation of accumulative performance in this case) is low in precision. Note that these effects were not confounded by actual performance differences, as the error-ratio and reaction times were equal across all expectancy conditions. The effects demonstrated by our manipulation checks of subjective experience indicate that despite the absence of objective performance differences between conditions, participants still sustained their belief in the efficacy of the device. Moreover, the ERN amplitude did not decrease over the course of the experiment and remained higher upon suggested improvement compared to suggested impairment throughout the entire block. This indicates that the errors experienced in the enhancement condition did not result in participants revising their prior beliefs and expectations. Although people may use outcome probability as determined by actual error-frequency to update their expectations (Nassar et al., 2010), a priori beliefs may still overrule the effects of actual outcome probability and hence affect prediction error signals (Sharot et al., 2007). Exactly why participants did not adjust their expectations of error likelihood remains unclear. Perhaps the instructions stating that the strength of the stimulation might fluctuate over the course of the experiment enhanced participants' persistent expectations. Additionally, the speed of the task may have prevented them from reflecting on perceived effects and from updating their beliefs accordingly until afterwards (i.e., at the end of the experimental task).

Furthermore, the ERN has also been interpreted as a neural distress or worry-signal, being sensitive to the emotional value of errors (Gehring & Willoughby, 2002; Hajcak et al., 2005; Inzlicht & Al-Khindi, 2012; Inzlicht & Tullett, 2010; Maier & Steinhauser, 2016; Moser et al., 2013). As such, the stronger ERN in the improvement condition could also reflect that participants were more upset or frustrated by errors when expecting enhanced cognitive performance, which perhaps motivated them to put in even more effort to experience the power of the brain stimulation, rather than giving

up and adjusting their expectations about the brain stimulation. We are well aware of the fact that the interpretation about the precise nature of the ERN and its functional significance remain a matter of ongoing debate – and we suggest that future studies could be designed to disentangle the violation of expectation from the distress account (e.g., by independently manipulating expectations about the likelihood and the reward value of errors).

Either way, the sustained effects of our placebo manipulation are remarkable, especially since participants did not experience actual performance improvement when assessing their performance afterwards. The open questions related to the experience during the improvement condition indicated that sixteen of the participants (70%) felt more focused / concentrated / alert / awake or faster in this condition, whereas seven participants (30%) felt nothing or only frustration. Interestingly, only five participants reported solely positive effects. Eleven of the sixteen participants who reported some experiences in line with the suggestion also provided a counterargument as to why their actual performance might not have been better, e.g., “I was better able to concentrate, but therefore I focused more on the correct answer and therefore it took longer” or “I felt like I registered faster in which direction the arrow was pointed, but my fingers didn’t necessarily follow”. We cautiously interpret this as suggesting that people can quite easily be convinced of some induced placebo effect, yet if the to-be-affected outcome is too salient, as was perhaps the case for errors on the Flanker task, they might themselves come up with alternative explanations justifying the observed results – at least when reflecting on their performance afterwards.

Additionally, the absence of a relationship between the ERN and the sense of agency in the improvement condition may reflect a dissociation between implicit and explicit processing of agency (Moore et al., 2012; Pacherie, 2007). The ERN may be considered an automatic response to errors (i.e., occurring rapidly and outside volitional control), whereas the explicit judgment of agency may result from a postdictive process in which errors can be attributed to an internal or an external source. Following Wegner’s account of reconstructive agency, this postdictive attribution can be understood as a process in which people seek explanations for their perceived actions and thoughts after they occurred (Synofzik et al., 2013; Wegner, 2003). These implicit and explicit agency processes often coincide – stronger ERN with higher agency rating, as in the impairment condition, but they can also diverge – as in the improvement condition. In the latter case, the ERN amplitude and the sense of agency rating may respectively reflect the effects of implicit expectations that one should perform better due to the brain stimulation and the explicit belief that the stimulation was also responsible for any committed errors.

Across the board, it seemed that people did in fact experience some effect of the stimulation, but also realized that they still made several errors and therefore came up with explanations to reconcile both experiences. In order to reduce the salience of this discrepancy, we suggest that future placebo studies should specifically focus on subjective effects in the cognitive domain, e.g., by considering a task that encompasses more opaque outcomes, for instance focusing on speed, or using a motor task, in which outcomes are arguably more subjective. In the present study, however, our main focus was on the ERN, rather than subjective performance effects.

Finally, in order to maximize expectancy effects, we exploited multiple suggestive cues including a real tDCS device, verbal suggestions, a lab setting and screening materials combined with

actual recording of brain data (cf. Andersen et al., 2014). Indeed, verbal suggestions, physical context and reliability, status or authority of the experimenter have all been shown to contribute to enhance placebo responses (Blasi et al., 2001; Crow et al., 1999; Howe et al., 2017; Schjoedt et al., 2011). Moreover, when commercial brain stimulation devices are used in a naturalistic setting, verbal information and the expertise and trustworthiness of the provider are also mainly employed to boost efficacy expectancy and optimize outcomes.⁷ That being said, an interesting next step would be to disentangle the relative contribution of each of the specific components, for instance by comparing the present paradigm to other brain-related placebo manipulations such as neurofeedback (e.g., Thibault et al., 2017) or ‘frequency stimulation’ (e.g., Schwarz & Büchel, 2015) and to traditional placebo manipulations such as pills or creams. Interestingly, in our study we found that mere verbal suggestions were already sufficient to reliably induce placebo-effects – in contrast to previous studies that have used conditioning or reinforcement learning in combination with verbal suggestions to induce placebo responses (e.g., Schwarz & Büchel, 2015).

In conclusion, this study demonstrates that sole expectations about transcranial stimulation may have profound effects on neural error processing and on the attribution of errors to an external source. These findings emphasize the need to be aware of the ethical consequences when people are able to ‘blame the brain’ for their performance or experiences, especially outside of the lab. More importantly, the present study also demonstrates the other side of the coin, namely the potential for brain stimulation paradigms to be used in cognitive (placebo) research, aligning with previous applications of placebo brain stimulation to induce analgesia (Krummenacher et al., 2010) and even mystical experiences (Andersen et al., 2014; Granqvist et al., 2005; van Elk, 2015). Indeed, the fact that induced expectations about transcranial stimulation have effects at a neural level, i.e., beyond mere demand characteristics and subjective effects, advocates placebo brain stimulation, or neuroenchantment manipulations, as a promising tool for novel experimental manipulations.

References

- Aarts, H., Custers, R., & Wegner, D. M. (2005). On the inference of personal authorship: Enhancing experienced agency by priming effect information. *Consciousness and Cognition*, *14*(3), 439–458. doi: 10.1016/j.concog.2004.11.001
- Alexander, W. H., & Brown, J. W. (2010). Competition between learned reward and error outcome predictions in anterior cingulate cortex. *NeuroImage*, *49*(4), 3210–8. doi: 10.1016/j.neuroimage.2009.11.065
- Ali, S. S., Lifshitz, M., & Raz, A. (2014). Empirical neuroenchantment: from reading minds to thinking critically. *Frontiers in human neuroscience*, *8*, 357.
- Andersen, M., Schjoedt, U., Nielbo, K. L., & Sørensen, J. (2014). Mystical Experience in the Lab. *Method & Theory in the Study of Religion*, *26*(3), 217–245. doi: 10.1163/15700682-12341323
- Blasi, Z. D., Harkness, E., Ernst, E., Georgiou, A., & Kleijnen, J. (2001). Influence of context effects on health outcomes: a systematic review. *The Lancet*, *357*(9258), 757–762. doi: 10.1016/S0140-6736(00)04169-6
- Bostrom, N., & Sandberg, A. (2009). Cognitive enhancement: methods, ethics, regulatory challenges. *Science and Engineering Ethics*, *15*(3), 311–341. doi: 10.1007/s11948-009-9142-5

⁷See for instance the quote by *dr Williams* on the website of the commercial tDCS provider *foc.us* (<https://www.foc.us/>). Notably, this device was in fact shown to impair rather than improve working memory in a placebo-controlled study (Steenbergen et al., 2016).

- Buchel, C., Geuter, S., Sprenger, C., & Eippert, F. (2014). Placebo analgesia: a predictive coding perspective. *Neuron*, *81*(6), 1223–1239. doi: 10.1016/j.neuron.2014.02.042
- Chambon, V., Filevich, E., & Haggard, P. (2014). What is the Human Sense of Agency, and is it Metacognitive? In S. M. Fleming & C. D. Frith (Eds.), *The cognitive neuroscience of metacognition* (pp. 321–342). Berlin Heidelberg: Springer-Verlag.
- Clark, A. (2013). Whatever next? Predictive brains, situated agents, and the future of cognitive science. *Behav Brain Sci*, *36*(3), 181–204. doi: 10.1017/S0140525X12000477
- Clifasefi, S. L., Garry, M., Harper, D. N., Sharman, S. J., & Sutherland, R. (2007). Psychotropic placebos create resistance to the misinformation effect. *Psychonomic Bulletin & Review*, *14*(1), 112–117.
- Compton, R. J., Carp, J., Chaddock, L., Fineman, S. L., Quandt, L. C., & Ratliff, J. B. (2007). Anxiety and error monitoring: Increased error sensitivity or altered expectations. *Brain and Cognition*, *64*(3), 247–256.
- Crow, R., Gage, H., Hampson, S., Hart, J., Kimber, A., & Thomas, H. (1999). The role of expectancies in the placebo effect and their use in the delivery of health care: A systematic review. *Health Technology Assessment*, *3*(3). doi: 10.3310/hta3030
- Eriksen, B. A., & Eriksen, C. W. (1974). Effects of noise letters upon the identification of target letters in visual search. *Perception and Psychophysics*, *16*, 143–149.
- Falkenstein, M., Hohnsbein, J., Hoormann, J., & Blanke, L. (1990). Effects of errors in choice reaction tasks on the ERP under focused and divided attention. In C. H. M. Brunia, A. W. K. Gaillard, & A. Kok (Eds.), *Psychophysiological brain research* (pp. 192–195). Tilburg: Tilburg University Press.
- Falkenstein, M., Hohnsbein, J., Hoormann, J., & Blanke, L. (1991). Effects of crossmodal divided attention on late ERP components. II. Error processing in choice reaction tasks. *Electroencephalography and Clinical Neurophysiology*, *78*(6), 447–455.
- Falkenstein, M., Hoormann, J., Christ, S., & Hohnsbein, J. (2000). ERP components on reaction errors and their functional significance: A tutorial. *Biological Psychology*, *51*(2-3), 87–107. doi: 10.1016/S0301-0511(99)00031-9
- Farah, M. J. (2002). Emerging ethical issues in neuroscience. *Nature Neuroscience*, *5*(11), 1123–1129. doi: 10.1038/nn1102-1123
- Gehring, W. J., & Fencsik, D. E. (2001). Functions of the medial frontal cortex in the processing of conflict and errors. *The Journal of neuroscience : the official journal of the Society for Neuroscience*, *21*(23), 9430–9437. doi: 10.1523/JNEUROSCI.2123-01.2001
- Gehring, W. J., Goss, B., Coles, M. G. H., Meyer, D. E., & Donchin, E. (1993). A neural system for error detection and compensation. *Psychological Science*, *4*(6), 385–390.
- Gehring, W. J., & Willoughby, A. R. (2002). The medial frontal cortex and the rapid processing of monetary gains and losses. *Science*, *295*(5563), 2279–2282. doi: 10.1126/science.1066893
- Good, M., Inzlicht, M., & Larson, M. J. (2015). God will forgive: reflecting on God’s love decreases neurophysiological responses to errors. *Social Cognitive and Affective Neuroscience*, *10*(3), 357–363. doi: 10.1093/scan/nsu096
- Granqvist, P., Fredrikson, M., Unge, P., Hagenfeldt, A., Valind, S., Larhammar, D., & Larsson, M. (2005). Sensed presence and mystical experiences are predicted by suggestibility, not by the application of transcranial weak complex magnetic fields. *Neuroscience Letters*, *379*(1), 1–6. doi: 10.1016/J.NEULET.2004.10.057
- Gratton, G., Coles, M. G., & Donchin, E. (1983). A new method for off-line removal of ocular artifact. *Electroencephalography and Clinical Neurophysiology*, *55*(4), 468–484.

- Groth-Marnat, G., & Pegden, J.-A. (1998). Personality Correlates of Paranormal Belief: Locus of Control and Sensation Seeking. *Social Behavior and Personality: an international journal*, *26*(3), 291–296. doi: 10.2224/sbp.1998.26.3.291
- Hajcak, G., Moser, J. S., Yeung, N., & Simons, R. F. (2005). On the ERN and the significance of errors. *Psychophysiology*, *42*(2), 151–160. doi: 10.1111/j.1469-8986.2005.00270.x
- Heersmink, R. (2015). Extended mind and cognitive enhancement: Moral aspects of cognitive artifacts. *Phenomenology and the Cognitive Sciences*, 1–16.
- Holroyd, C. B., & Coles, M. G. H. (2002). The neural basis of human error processing: Reinforcement learning, dopamine, and the error-related negativity. *Psychological Review*, *109*(4), 679–709. doi: 10.1037/0033-295x.109.4.679
- Holroyd, C. B., Krigolson, O. E., Baker, R., Lee, S., & Gibson, J. (2009). When is an error not a prediction error? An electrophysiological investigation. *Cogn Affect Behav Neurosci*, *9*(1), 59–70. doi: 10.3758/CABN.9.1.59
- Holroyd, C. B., Larsen, J. T., & Cohen, J. D. (2004). Context dependence of the event-related brain potential associated with reward and punishment. *Psychophysiology*, *41*(2), 245–253. doi: 10.1111/j.1469-8986.2004.00152.x
- Holroyd, C. B., Nieuwenhuis, S., Yeung, N., & Cohen, J. D. (2003). Errors in reward prediction are reflected in the event-related brain potential. *Neuroreport*, *14*(18), 2481–2484. doi: 10.1097/01.wnr.0000099601.41403.a5
- Howe, L. C., Goyer, J. P., & Crum, A. J. (2017). Harnessing the placebo effect: Exploring the influence of physician characteristics on placebo response. *Health Psychology*, *36*(11), 1074–1082. doi: 10.1037/hea0000499
- Inzlicht, M., & Al-Khindi, T. (2012). ERN and the placebo: a misattribution approach to studying the arousal properties of the error-related negativity. *Journal of experimental psychology. General*, *141*(4), 799–807. doi: 10.1037/a0027586
- Inzlicht, M., & Tullett, A. M. (2010). Reflecting on God: Religious Primes Can Reduce Neurophysiological Response to Errors. *Psychological Science*, *21*(8), 1184–1190. doi: 10.1177/0956797610375451
- JASP Team. (2018). *JASP (Version 0.8.5)[Computer software]*. Retrieved from <https://jasp-stats.org/>
- Jessup, R. K., Busemeyer, J. R., & Brown, J. W. (2010). Error effects in anterior cingulate cortex reverse when error likelihood is high. *J Neurosci*, *30*(9), 3467–3472. doi: 10.1523/JNEUROSCI.4130-09.2010
- Kilner, J. M., Friston, K. J., & Frith, C. D. (2007). Predictive coding: an account of the mirror neuron system. *Cognitive Processing*, *8*(3), 159–166. doi: 10.1007/s10339-007-0170-2
- Krummenacher, P., Mohr, C., Haker, H., & Brugger, P. (2010). Dopamine, paranormal belief, and the detection of meaningful stimuli. *J Cogn Neurosci*, *22*(8), 1670–1681.
- Lee, M. D., & Wagenmakers, E. J. (2014). *Bayesian cognitive modeling: A practical course*. Cambridge University Press.
- Lilienfeld, S. O., Lynn, S. J., Ruscio, J., & Beyerstein, B. L. (2011). *50 great myths of popular psychology: Shattering widespread misconceptions about human behavior*. Hoboken, NJ: John Wiley & Sons.
- Maier, M. E., & Steinhauser, M. (2016). Error significance but not error expectancy predicts error-related negativities for different error types. *Behavioural Brain Research*, *297*, 259–267. doi: 10.1016/j.bbr.2015.10.031
- Mezulis, A. H., Abramson, L. Y., Hyde, J. S., & Hankin, B. L. (2004). Is there a universal positivity bias in attributions? A meta-analytic review of individual, developmental, and cultural differences in the self-serving attributional bias. *Psychological Bulletin*, *130*(5), 711–747.

- Moore, J. W., Middleton, D., Haggard, P., & Fletcher, P. C. (2012). Exploring implicit and explicit aspects of sense of agency. *Consciousness and Cognition*, *21*(4), 1748–1753. doi: 10.1016/j.concog.2012.10.005
- Moore, J. W., Wegner, D. M., & Haggard, P. (2009). Modulating the sense of agency with external cues. *Consciousness and Cognition*, *18*(4), 1056–1064. doi: 10.1016/j.concog.2009.05.004
- Moser, J. S., Moran, T. P., Schroder, H. S., Donnellan, M. B., & Yeung, N. (2013). On the relationship between anxiety and error monitoring: a meta-analysis and conceptual framework. *Frontiers in Human Neuroscience*, *7*, 466. doi: 10.3389/fnhum.2013.00466
- Nassar, M. R., Wilson, R. C., Heasley, B., & Gold, J. I. (2010). An approximately Bayesian delta-rule model explains the dynamics of belief updating in a changing environment. *The Journal of neuroscience : the official journal of the Society for Neuroscience*, *30*(37), 12366–78. doi: 10.1523/JNEUROSCI.0822-10.2010
- O'Connor, C., Rees, G., & Joffe, H. (2012). Neuroscience in the Public Sphere. *Neuron*, *74*(2), 220–226. doi: 10.1016/J.NEURON.2012.04.004
- Oliveira, F. T., McDonald, J. J., & Goodman, D. (2007). Performance monitoring in the anterior cingulate is not all error related: expectancy deviation and the representation of action-outcome associations. *Journal of Cognitive Neuroscience*, *19*(12), 1994–2004.
- Pacherie, E. (2007). The Sense of Control and the Sense of Agency. *Psyche*, *13*(1), 1–30. doi: 10.1093/acprof:oso/9780190267278.001.0001
- Paddock, J. R., Joseph, A. L., Ming Chan, F., Terranova, S., Manning, C., & Loftus, E. F. (1998). When Guided Visualization Procedures May Backfire: Imagination Inflation and Predicting Individual Differences in Suggestibility. *Appl. Cognit. Psychol*, *12*, 63–75.
- Polito, V., Barnier, A. J., & Woody, E. Z. (2013). Developing the Sense of Agency Rating Scale (SOARS): an empirical measure of agency disruption in hypnosis. *Consciousness and Cognition*, *22*(3), 684–696.
- Raghunathan, T. E., Rosenthal, R., & Rubin, D. B. (1996). Comparing correlated but nonoverlapping correlations. *Psychological Methods*, *1*(2), 178–183.
- Rigoni, D., Wilquin, H., Brass, M., & Burle, B. (2013). When errors do not matter: Weakening belief in intentional control impairs cognitive reaction to errors. *Cognition*, *127*(2), 264–269. doi: 10.1016/j.cognition.2013.01.009
- Roskies, A. (2006). Neuroscientific challenges to free will and responsibility. *Trends in Cognitive Sciences*, *10*(9), 419–423. doi: 10.1016/J.TICS.2006.07.011
- Rotter, J. B. (1966). Generalized expectancies for internal versus external control of reinforcement. *Psychological monographs: General and applied*.
- Rouder, J. N., Morey, R. D., Speckman, P. L., & Province, J. M. (2012). Default Bayes factors for ANOVA designs. *Journal of Mathematical Psychology*, *56*(5), 356–374. doi: 10.1016/J.JMP.2012.08.001
- Rusconi, E., & Mitchener-Nissen, T. (2014). The role of expectations, hype and ethics in neuroimaging and neuromodulation futures. *Frontiers in System Neuroscience*, *8*, 214. doi: 10.3389/fnsys.2014.00214
- Sahakian, B. J., & Morein-Zamir, S. (2011). Neuroethical issues in cognitive enhancement. *Journal of Psychopharmacology*, *25*(2), 197–204.
- Scheffers, M. K., & Coles, M. G. (2000). Performance monitoring in a confusing world: error-related brain activity, judgments of response accuracy, and types of errors. *Journal of Experimental Psychology: Human Perception and Performance*, *26*(1), 141–151.
- Schjoedt, U., Stødkilde-Jørgensen, H., Geertz, A. W., Lund, T. E., & Roepstorff, A. (2011). The power of charisma-perceived charisma inhibits the frontal executive network of believers in intercessory prayer. *Social Cognitive and Affective Neuroscience*, *6*(1), 119–127. doi: 10.1093/scan/nsq023

- Schwarz, K. A., & Büchel, C. (2015). Cognition and the Placebo Effect - Dissociating Subjective Perception and Actual Performance. *PloS one*, *10*(7), 1–12. doi: 10.1371/journal.pone.0130492
- Sharot, T., Riccardi, A. M., Raio, C. M., & Phelps, E. A. (2007). Neural mechanisms mediating optimism bias. *Nature*, *450*(7166), 102–105. doi: 10.1038/nature06280
- Simons, R. F. (2010). The way of our errors: Theme and variations. *Psychophysiology*, *47*(1), 1–14. doi: 10.1111/j.1469-8986.2009.00929.x
- Steenbergen, L., Sellaro, R., Hommel, B., Lindenberger, U., Kühn, S., & Colzato, L. S. (2016). “Unfocus” on foc.us: commercial tDCS headset impairs working memory. *Experimental Brain Research*, *234*(3), 637–643. doi: 10.1007/s00221-015-4391-9
- Swiney, L., & Sousa, P. (2013). When our thoughts are not our own: Investigating agency misattributions using the Mind-to-Mind paradigm. *Consciousness and Cognition*, *22*(2), 589–602.
- Synofzik, M., Vosgerau, G., & Voss, M. (2013). The experience of agency: an interplay between prediction and postdiction. *Frontiers in Psychology*, *4*, 127. doi: 10.3389/fpsyg.2013.00127
- Tellegen, A., & Atkinson, G. (1974). Openness to absorbing and self-altering experiences ("absorption"), a trait related to hypnotic susceptibility. *Journal of Abnormal Psychology*, *83*(3), 268–277. doi: 10.1037/h0036681
- Thibault, R. T., Lifshitz, M., & Raz, A. (2017). Neurofeedback or neuroplacebo? *Brain*, *140*(4), 862–864. doi: 10.1093/brain/awx033
- van Elk, M. (2015). An EEG Study on the Effects of Induced Spiritual Experiences on Somatosensory Processing and Sensory Suppression. *Journal for the Cognitive Science of Religion*, *2*(2), 121–157. doi: 10.1558/jcsr.v2i2.24573
- van Veen, V., & Carter, C. S. (2002). The anterior cingulate as a conflict monitor: FMRI and ERP studies. *Physiology and Behavior*, *77*(4-5), 477–482. doi: 10.1016/S0031-9384(02)00930-7
- Wegner, D. M. (2003). The mind's best trick: how we experience conscious will. *Trends in Cognitive Sciences*, *7*(2), 65–69. doi: 10.1016/S1364-6613(03)00002-0
- Wegner, D. M., & Wheatley, T. (1999). Apparent mental causation: Sources of the experience of will. *American Psychologist*, *54*(7), 480–492.
- Wessel, J. R., Danielmeier, C., Morton, J. B., & Ullsperger, M. (2012). Surprise and error: common neuronal architecture for the processing of errors and novelty. *J Neurosci*, *32*(22), 7528–7537. doi: 10.1523/JNEUROSCI.6352-11.2012
- Wetzels, R., Grasman, R. P. P. P., & Wagenmakers, E.-J. (2012). A Default Bayesian Hypothesis Test for ANOVA Designs. *The American Statistician*, *66*(2), 104–111. doi: 10.1080/00031305.2012.695956
- Woody, E. Z., & McConkey, K. M. (2003). What we don't know about the brain and hypnosis, but need to: A view from the Buckhorn Inn. *International Journal of Clinical and Experimental Hypnosis*, *51*(3), 309–338.
- Yasuda, A., Sato, A., Miyawaki, K., Kumano, H., & Kuboki, T. (2004). Error-related negativity reflects detection of negative reward prediction error. *Neuroreport*, *15*(16), 2561–2565.