



UvA-DARE (Digital Academic Repository)

Colloquium: Multimessenger astronomy with gravitational waves and high-energy neutrinos

Ando, S.; Baret, B.; Bartos, I.; Bouhou, B.; Chassande-Mottin, E.; Corsi, A.; Di Palma, I.; Dietz, A.; Donzaud, C.; Eichler, D.; Finley, C.; Guetta, D.; Halzen, F.; Jones, G.; Kandhasamy, S.; Kotake, K.; Kouchner, A.; Mandic, V.; Márka, S.; Márka, Z.; Moscoso, L.; Papa, M.A.; Piran, T.; Pradier, T.; Romero, G.E.; Sutton, P.; Thrane, E.; van Elewyck, V.; Waxman, E.

DOI

[10.1103/RevModPhys.85.1401](https://doi.org/10.1103/RevModPhys.85.1401)

Publication date

2013

Document Version

Final published version

Published in

Reviews of Modern Physics

[Link to publication](#)

Citation for published version (APA):

Ando, S., Baret, B., Bartos, I., Bouhou, B., Chassande-Mottin, E., Corsi, A., Di Palma, I., Dietz, A., Donzaud, C., Eichler, D., Finley, C., Guetta, D., Halzen, F., Jones, G., Kandhasamy, S., Kotake, K., Kouchner, A., Mandic, V., Márka, S., ... Waxman, E. (2013). Colloquium: Multimessenger astronomy with gravitational waves and high-energy neutrinos. *Reviews of Modern Physics*, 85(4), 1401-1420. <https://doi.org/10.1103/RevModPhys.85.1401>

General rights

It is not permitted to download or to forward/distribute the text or part of it without the consent of the author(s) and/or copyright holder(s), other than for strictly personal, individual use, unless the work is under an open content license (like Creative Commons).

Colloquium: Multimessenger astronomy with gravitational waves and high-energy neutrinos

Shin'ichiro Ando

Gravitation AstroParticle Physics Amsterdam Institute (GRAPPA), Amsterdam, The Netherlands

Bruny Baret

APC, Université Paris Diderot, CNRS/IN2P3, CEA/IRFU, Observatoire de Paris, Sorbonne Paris Cité, 75205 Paris, France

Imre Bartos

Department of Physics, Columbia University, New York, New York 10027, USA

Boutayeb Bouhou

APC, Université Paris Diderot, CNRS/IN2P3, CEA/IRFU, Observatoire de Paris, Sorbonne Paris Cité, 75205 Paris, France

Eric Chassande-Mottin

APC, Université Paris Diderot, CNRS/IN2P3, CEA/IRFU, Observatoire de Paris, Sorbonne Paris Cité, 75205 Paris, France

Alessandra Corsi

Physics Department, George Washington University, Washington, D.C. 20052, USA and LIGO Laboratory, California Institute of Technology, Pasadena, California 91125, USA

Irene Di Palma

Albert-Einstein-Institut, Max-Planck-Institut für Gravitationsphysik, D-30167 Hannover, Germany

Alexander Dietz

Department of Physics and Astronomy of the University of Mississippi, Oxford, Mississippi 38677-1848, USA

Corinne Donzaud

APC, Université Paris Diderot, CNRS/IN2P3, CEA/IRFU, Observatoire de Paris, Sorbonne Paris Cité, 75205 Paris, France and Université Paris-sud, Orsay, F-91405, France

David Eichler

Department of Physics, Ben Gurion University, Beer-Sheva 84105, Israel

Chad Finley

Oskar Klein Centre and Department of Physics, Stockholm University, SE-10691 Stockholm, Sweden

Dafne Guetta

Department of Physics and Optical Engineering, ORT Braude, P.O. Box 78, Karmiel, Israel and INAF-Observatory of Rome, Via Frascati 33, Monteporzio Catone, Italy

Francis Halzen

Department of Physics, University of Wisconsin, Madison, Wisconsin 53706, USA

Gareth Jones

School of Physics and Astronomy, Cardiff University, Cardiff CF24 3AA, United Kingdom

Shivaraj Kandhasamy

University of Minnesota, Minneapolis, Minnesota 55455, USA

Kei Kotake

*Division of Theoretical Astronomy, National Astronomical Observatory of Japan,
2-21-1, Osawa, Mitaka, Tokyo, 181-8588, Japan*

Antoine Kouchner

*APC, Université Paris Diderot, CNRS/IN2P3, CEA/IRFU, Observatoire de Paris,
Sorbonne Paris Cité, 75205 Paris, France*

Vuk Mandic

University of Minnesota, Minneapolis, Minnesota 55455, USA

Szabolcs Márka

Department of Physics, Columbia University, New York, New York 10027, USA

Zsuzsa Márka

Department of Physics, Columbia University, New York, New York 10027, USA

Luciano Moscoso*

*APC, Université Paris Diderot, CNRS/IN2P3, CEA/IRFU, Observatoire de Paris,
Sorbonne Paris Cité, 75205 Paris, France*

Maria Alessandra Papa

*Albert-Einstein-Institut, Max-Planck-Institut für Gravitationsphysik,
D-30167 Hannover, Germany*

Tsvi Piran

Racah Institute of Physics, Hebrew University of Jerusalem, Jerusalem 91904, Israel

Thierry Pradier

Université de Strasbourg and Institut Pluridisciplinaire Hubert Curien, Strasbourg, France

Gustavo E. Romero

*Instituto Argentino de Radioastronomía (IAR, CCT La Plata, CONICET),
C.C. No. 5, 1894, Villa Elisa, Buenos Aires, Argentina
and FCAyG, Observatorio de La Plata, Paseo del Bosque s/n, CP 1900 La Plata, Argentina*

Patrick Sutton

School of Physics and Astronomy, Cardiff University, Cardiff CF24 3AA, United Kingdom

Eric Thrane

University of Minnesota, Minneapolis, Minnesota 55455, USA

Véronique Van Elewyck†

*APC, Université Paris Diderot, CNRS/IN2P3, CEA/IRFU, Observatoire de Paris, Sorbonne
Paris Cité, 75205 Paris, France*

Eli Waxman

*Department of Particle Physics and Astrophysics, The Weizmann Institute of Science,
Rehovot 76100, Israel*

(published 2 October 2013)

Many of the astrophysical sources and violent phenomena observed in our Universe are potential emitters of gravitational waves and high-energy cosmic radiation, including photons, hadrons, and presumably also neutrinos. Both gravitational waves (GW) and high-energy neutrinos (HEN) are cosmic messengers that may escape much denser media than photons. They travel unaffected over cosmological distances, carrying information from the inner regions of the astrophysical engines from which they are emitted (and from which photons and charged cosmic rays cannot reach us). For the same reasons, such messengers could also reveal new, hidden sources that have not been observed by conventional photon-based astronomy. Coincident observation of GWs and HENs may thus play a critical role in multimessenger astronomy. This is particularly true at the present time owing to the advent of a new generation of dedicated detectors: the neutrino telescopes IceCube at the South Pole and ANTARES in the Mediterranean Sea, as well as the GW interferometers Virgo in Italy and LIGO in the United States. Starting from 2007, several periods of concomitant data taking involving these detectors have been conducted. More joint data sets are expected with the next generation of advanced detectors that are to be operational by 2015, with other detectors, such as KAGRA in Japan, joining in the future. Combining information from these independent detectors can provide original ways of constraining the physical processes driving the sources and also help confirm the astrophysical origin of a GW or HEN signal in case of coincident observation. Given the complexity of the instruments, a successful joint analysis of this combined GW and HEN observational data set will be possible only if the expertise and knowledge of the data is shared between the two communities. This Colloquium aims at providing an overview of both theoretical and experimental state of the art and perspectives for GW and HEN multimessenger astronomy.

DOI: [10.1103/RevModPhys.85.1401](https://doi.org/10.1103/RevModPhys.85.1401)

PACS numbers: 04.80.Nn, 95.85.Sz, 95.55.Vj, 95.85.Ry

CONTENTS

| | |
|---|------|
| I. Introduction | 1403 |
| II. The Science Case for Multimessenger GW and HEN Searches | 1405 |
| A. Potential emitters of GW and HEN | 1405 |
| 1. Galactic sources: Soft gamma-ray repeaters | 1405 |
| 2. Gamma-ray bursts | 1405 |
| B. Bounds on the GW and HEN time delay | 1408 |
| III. GW and HEN Detection: Status and Prospects | 1408 |
| A. Interferometric gravitational-wave detectors | 1408 |
| 1. Detection principle and state of the art | 1408 |
| 2. Multimessenger strategies | 1410 |
| B. High-energy neutrino telescopes | 1410 |
| 1. Detection principle and state of the art | 1410 |
| 2. Multimessenger strategies | 1411 |
| IV. Perspectives for the Joint Data Analysis | 1412 |
| A. GW data analysis | 1412 |
| 1. Multidetector coherent analysis and background rejection | 1412 |
| 2. Source localization | 1413 |
| B. HEN data analysis | 1413 |
| C. HEN-triggered GW searches | 1413 |
| D. Baseline search with combined HEN and GW event lists | 1415 |
| V. Conclusions | 1416 |
| Acknowledgments | 1417 |
| References | 1417 |

I. INTRODUCTION

High-energy multimessenger astronomy has entered an exciting era with the development and operation of new detectors

offering unprecedented opportunities to observe cosmic radiation in the Universe in all its variety. Gamma-ray astronomy has been an illustrative example of the synergy between particle physics and astronomy. Soon after the discovery of the neutral pion, [Hayakawa \(1952\)](#) suggested that the interaction of cosmic rays with the neutral gas in the galactic plane should produce a diffuse, extended gamma-ray emission. Almost simultaneously, [Hutchinson \(1952\)](#) calculated the contribution to such an emission from relativistic bremsstrahlung. Prospects for gamma-ray astronomy were set up shortly after by [Morrison \(1958\)](#). The first gamma-ray sources were discovered during the late 1960s and 1970s, but even until the 1990s they were difficult to identify, calling for multiwavelength observational efforts [see [Cheng and Romero \(2004\)](#) for an overview of the subject]. During the past decade, this approach has revealed itself to be fruitful in the identification of several types of sources from MeV to TeV energy scales.

The mechanisms that produce the high-energy radiation have, however, remained elusive, requiring the development of multimessenger techniques and programs that would explore all components of the cosmic radiation [see [Paredes, Reimer, and Torres \(2007\)](#)]. In the study of transient sources, which involve compact objects and ultraviolet phenomena (such as gamma-ray bursts and magnetars), multimessenger techniques are in fact the only approaches that might lead to a full understanding of the underlying processes. In this context, high-energy (\gg GeV) neutrinos (HENs) and gravitational waves (GWs) could play an important role. These messengers share interesting astronomical properties: HENs can escape from much denser, hence deeper, environments than photons, and GWs propagate virtually freely in any region of space. Moreover, and contrary to high-energy photons (which can be absorbed by intervening photon backgrounds) and charged cosmic rays (which are deflected by ambient magnetic fields), both GWs and HENs propagate at the speed of light through magnetic fields and matter without being altered. Therefore, they are

*Deceased.

†Corresponding author.
elewyck@apc.univ-paris7.fr

expected to provide important information about the processes taking place in astrophysical engines and could even reveal the existence of sources opaque to hadrons and photons, sources that would thus far have remained undetected. While no direct observation of GWs or HENs from a cosmic source has yet been claimed, it is widely believed that a first detection could plausibly occur in the near future; see, e.g., [Becker \(2008\)](#) and [Márka \(2011\)](#) for reviews on these subjects. This Colloquium is dedicated to the prospects for astronomy using these two cosmic messengers.

Many astrophysical sources, the majority of which originate from cataclysmic events, are expected to produce both GWs and HENs. While GWs are linked to the dynamics of the bulk motion of the source progenitor, HENs trace the interactions of accelerated protons (and possibly heavier nuclei) with matter and radiation in and around the source. An overview of the most plausible sources of HENs and GWs is presented in [Sec. II.A](#), along with relevant references. It includes transient sources such as extra-galactic gamma-ray bursts (GRBs), for which popular progenitor models involve either the collapse of a highly rotating massive star or the merger of a binary system of compact objects (neutron star–neutron star or black hole–neutron star); both of these scenarios are expected to be associated with the emission of GWs. The presence of accelerated hadrons in the jets emitted by the source would ensure the subsequent production of HENs. Magnetars, though less powerful sources, are closer (galactic) and more frequently occurring; they are also considered as possible GW and HEN emitters. Observation-based phenomenological arguments bounding the time delay between the GW and HEN emission in the sources are presented in [Sec. II.B](#).

Current efforts carried out for the detection of GWs and HENs are described in [Sec. III](#). Concerning the detection of neutrinos, large ($\sim \text{km}^3$) volumes of target material need to be monitored to compensate for the feeble signal expected from plausible astrophysical sources. Current neutrino telescopes are in-water or in-ice Cherenkov detectors which rely on the construction of 3D arrays of photomultiplier tubes (PMTs). IceCube¹ is a km^3 -scale detector located at the geographic South Pole, while ANTARES,² with an instrumented volume $\sim 0.02 \text{ km}^3$, is deployed undersea, 40 km off the French coast and serves as a prototype for a future km^3 -scale detector in the Mediterranean. The combination of the two detectors provides full coverage of the sky and partial redundancy. The direct detection of GWs is performed through the operation of large ($\sim \text{km}$ scale) laser interferometers. Several GW observatories have been operating recently: the two LIGO³ detectors in the USA (one in Livingston, Louisiana, another in Hanford, Washington), Virgo⁴ near Pisa (Italy), and GEO⁵ near Hanover (Germany), collectively form a network of detectors that allows for the localization of astrophysical sources. Both HEN and GW detectors have been developing multimessenger strategies that involve other cosmic probes, in particular,

electromagnetic radiation in a wide range of wavelength bands. These are typically based either on the use of external triggers (such as GRB events) or on follow-up programs; more detail is given in [Secs. III.A.2](#) and [III.B.2](#).

The detection of coincident GW and HEN events would be a landmark observation and help confirm the astrophysical origin of both signals. Coincident searches are also a way to enhance the sensitivity of the joint detection channel by exploiting the correlation between HEN and GW significances, taking advantage of the fact that the two types of detectors have uncorrelated backgrounds. Since a joint analysis requires a consistent signal to be observed in both instruments in space as well as time, there is a significant background suppression relative to each individual analysis, hence an increased discovery potential. Preliminary investigations of the feasibility of such searches were performed by [Aso *et al.* \(2008\)](#) and [Pradier \(2009\)](#) and indicate that, even if the constituent observatories provide several triggers a day, the false alarm rate for the combined detector network can be maintained at a very low level, e.g., $1/(600 \text{ yr})$ for some realistic parameters.

A major challenge for the analysis lies in the combined optimization of the selection criteria for the different detection techniques. [Section IV](#) begins with laying the basics of the data analysis procedures used in each experiment, including the performance of the detectors, and concentrating on the important aspects connected to GW and HEN searches such as the accuracy of the source sky position reconstruction. Different options for a combined GW and HEN analysis are then presented. [Section IV.C](#) describes a method for a HEN-triggered GW search: in this case, the search for GW signals is performed only in parts of the sky defined by neutrino candidate events, and within a time window defined by the observational and phenomenological considerations discussed in [Sec. II.B](#). The outcome of such an analysis, performed recently with data from the construction phase of ANTARES and from the initial LIGO and Virgo detectors, is also presented. Alternatively, comprehensive searches for space-time coincidences between independent lists of neutrino and GW events can also be performed as illustrated in [Sec. IV.D](#) through an example baseline search that could be performed with IceCube, LIGO, and Virgo. In this case, time-coincident signals are tested for correlation using a combined GW and HEN likelihood sky map as well as additional information on the individual significance of the HEN and GW candidates (such as their spatial correlation with large-scale matter distribution). This second, more symmetric and comprehensive option requires the existence of two independent analysis chains scanning the whole phase space in search of interesting events. Both [Secs. IV.C](#) and [IV.D](#) illustrate how these searches can be used to infer limits on the population of astrophysical GW and HEN sources, while the [Conclusion](#) in [Sec. V](#) presents general perspectives for the astrophysical reach of GW and HEN searches.

The joint search activities described here are performed in the framework of a dedicated GW and HEN working group involving collaborators from all previously mentioned experiments. The data-exchange policies are regulated by specific bilateral memoranda of understanding.

¹[Halzen and Klein \(2010\)](#); see also <http://icecube.wisc.edu>.

²[Ageron *et al.* \(2011\)](#); see also <http://antares.in2p3.fr>.

³[Abbott *et al.* \(2009\)](#); see also <http://www.ligo.org>.

⁴[Accadia *et al.* \(2012\)](#); see also <http://www.virgo.infn.it>.

⁵[Grote \(2010\)](#); see also <http://geo600.aei.mpg.de>.

II. THE SCIENCE CASE FOR MULTIMESSENGER GW AND HEN SEARCHES

A. Potential emitters of GW and HEN

1. Galactic sources: Soft gamma-ray repeaters

Soft gamma-ray repeaters (SGRs) are x-ray pulsars which have quiescent soft (2–10 keV) periodic x-ray emissions with periods ranging from 5 to 10 s. They exhibit repetitive erratic bursting episodes lasting a few hours each and composed of numerous very short (\sim ms) pulses. Every once in a while they emit a giant flare in which a short (< 0.5 s) spike of harder radiation is observed; such flares can reach peak luminosities of $\sim 10^{47}$ erg/s, in x rays and gamma rays. A handful of SGR sources are known, most of them in the Milky Way and one in the Large Magellanic Cloud. Their detected population has been increasing in the last years, thanks to more sensitive instruments and better monitoring.⁶ Three of the known SGRs have had hard spectrum (\sim MeV energy) giant flares: one with a luminosity of 10^{47} erg/s, and the two others being 2 orders of magnitude weaker.

The *magnetar* model describes these objects as a neutron star with an enormous magnetic field $B \geq 10^{15}$ G which can be subject to star quakes that are thought to fracture the rigid crust, causing outbursts (Duncan and Thompson, 1992; Thompson and Duncan, 1995, 1996). The giant flares result from the formation and dissipation of strong localized currents due to magnetic field rearrangements that are associated with the quakes and liberate a high flux of x and gamma rays. Sudden changes in the large magnetic fields accelerate protons or nuclei that produce neutral and charged pions in interactions with thermal radiation. These hadrons subsequently decay into TeV or even PeV energy gamma rays and neutrinos (Halzen *et al.*, 2005; Ioka *et al.*, 2005), making flares from SGRs potential sources of HENs. An alternative model involving a large-scale rearrangement of the magnetic field was also proposed by Eichler (2002), which allows for large energy releases and detectable HEN fluxes from galactic magnetars even for relatively small HEN efficiencies.

During the crustal disruption, a fraction of the initial magnetic energy is annihilated and released as photons, and the stored elastic energy is also converted into shear vibrations. SGR flares may excite to some extent the fundamental or f modes of the star, which radiate GW with damping times of ~ 200 ms, as described by Lindblom and Detweiler (1983), de Freitas Pacheco (1998), and Gualtieri, Pons, and Miniutti (2004). These time scales are shorter than other relevant ones, except for the Alfvén-wave crossing time of the star, to which they are comparable. If much of the flare energy goes into exciting the f modes, they might emit GW energy exceeding the emitted electromagnetic (EM) energy.

Detailed predictions about the GW amplitude are difficult to obtain. An upper limit of $\sim 10^{49}$ erg on the maximum total energy release in an SGR giant flare can be derived from one of the most optimistic models (Ioka, 2001, Fig. 3) of a giant

flare associated with a global reconfiguration of the internal magnetic field (Eichler, 2002). Similarly, Corsi and Owen (2011) estimated a maximum total energy release of $\sim 10^{48}$ – 10^{49} ergs in a fraction of the parameter space, within the model originally proposed by Ioka (2001). To date, the best LIGO f-mode limit is 1.4×10^{47} erg (at 1090 Hz and a nominal distance of 1 kpc) for SGR 0501 + 451 (Abadie *et al.*, 2011b). This upper limit probes below the most optimistic total energy estimates, but most likely only a small fraction of the total available energy actually goes into GWs. Recent works by Kashiyama and Ioka (2011), Levin and van Hoven (2011), Ciolfi and Rezzolla (2012), Lasky, Zink, and Kokkotas (2012), and Zink, Lasky, and Kokkotas (2012) suggest that the fraction of flare energy that goes into exciting the f mode is very small ($E_{\text{GW}} \ll 10^{45}$ erg for magnetic fields smaller than 10^{16} G), making the prospect for a detection of GWs from SGR f modes with the Advanced LIGO and Virgo unlikely. However, this question may be open to further investigation; see, e.g., Kashiyama and Ioka (2011), Levin and van Hoven (2011), Lasky, Zink, and Kokkotas (2012), and Zink, Lasky, and Kokkotas (2012).

2. Gamma-ray bursts

GRBs are detected as an intense and short-lived flash of gamma rays with energies ranging from tens of keVs to tens of GeVs. The morphology of their light curves is highly variable and typically exhibits millisecond variability, suggesting very compact sources and relativistic expansion. GRBs are divided into two classes depending on the duration of their prompt gamma-ray emission, which appears to be correlated with the hardness of their spectra and are believed to arise from different progenitors: short-hard bursts last less than 1–2 s (depending on the observing detector) while long-soft bursts can last up to dozens of minutes.

The BATSE detector, launched in 1991 on board the Compton Gamma-Ray Observatory, was the first mission to accumulate observations on more than 1000 GRBs, establishing the isotropy of their sky distribution and characterizing their light curve and broken power-law spectra (Paciesas *et al.*, 1999). The detection of x-ray and optical counterparts pertaining to the afterglow phase of several GRBs, triggered by the first observation of an x-ray transient emission from GRB970228 by the BeppoSAX satellite (Costa *et al.*, 1997), subsequently confirmed their extra-galactic origin by allowing more accurate localization of the source and redshift determination. Currently operating GRB missions include *Swift* (Gehrels *et al.*, 2004), hosting a wide-field hard x-ray (15–350 keV) burst alert telescope coupled to softer x-ray, ultraviolet, and optical telescopes and the Gamma-ray Burst Monitor on the Fermi Gamma-Ray Space Telescope (Atwood *et al.*, 2009) which focuses on the high-energy (15 keV–300 GeV) emission from GRBs.

In the standard picture, the mechanism responsible for the enormous, super-Eddington energy release ($\sim 10^{50}$ – 10^{52} ergs) in the prompt emission and in the afterglow is the dissipation (via internal shocks, magnetic reconnection, and external shocks) of bulk kinetic or Poynting flux into highly relativistic particles; see, e.g., Mészáros and Rees (1993) and the review by Piran (2005). The particles are accelerated to a nonthermal energy distribution via the Fermi

⁶See, e.g., Hurley *et al.* (1999a, 1999b), Cline *et al.* (2000), Kulkarni *et al.* (2003), Palmer *et al.* (2005), Mereghetti (2008), Aptekar *et al.* (2009), Göğüş *et al.* (2010), Hurley (2010), Kaneko *et al.* (2010), and van der Horst *et al.* (2010).

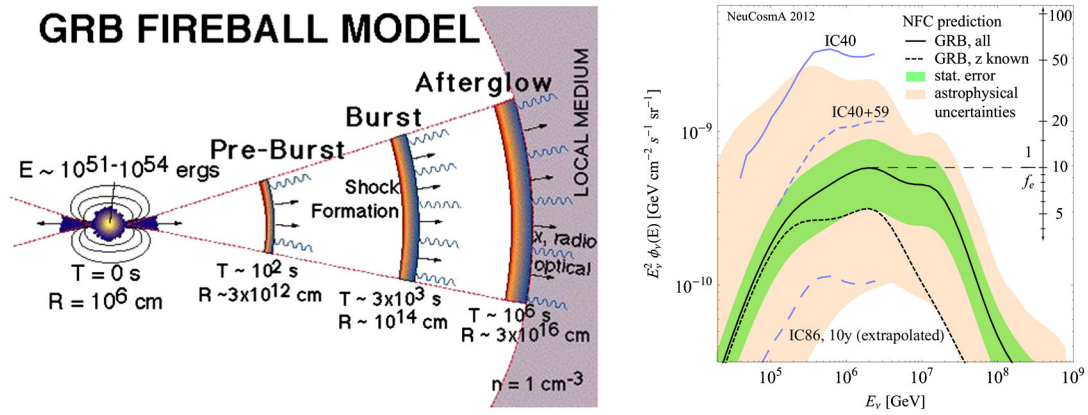


FIG. 1 (color online). Left: Schematic depiction of the fireball mechanism, with the characteristic time and distance scales associated with the different phases. The prompt (burst) phase is due to internal shocks in the relativistically expanding fireball, producing strong gamma- and x-ray emission. The afterglow arises from the cooling fireball and its interaction with the surrounding medium; it is associated with x-ray, optical, and radio emission. From www.swift.ac.uk. Right: Current limits set by IceCube in its 40- and 59-string configurations (IC40 and IC40 + 59) on the quasidiffuse GRB neutrino flux, together with predictions based on recent numerical calculations taking into account uncertainties on the astrophysical parameters and those due to the limited statistics of bursts. Also shown is the extrapolated limit that one can expect from 10 years of operation with the full IceCube detector (IC86). From [Hummer, Baerwald, and Winter, 2012](#).

mechanism in a relativistically expanding fireball ejected by the GRB central engine as sketched in Fig. 1 (left panel). The accelerated electrons (and positrons) in the intense magnetic field emit nonthermal photons via synchrotron radiation and inverse Compton scattering. The plasma parameters inferred from observations to characterize GRB baryonic fireballs are such that proton acceleration to energies exceeding 10^{20} eV is likely to be possible in these sources. Moreover, the time averaged energy output of GRBs in photons is comparable to the UHECR flux.⁷ Therefore, the canonical baryonic fireball also suggests that GRBs are a prime candidate source for the UHECR, observed at energies $E \sim 10^{18}-10^{20}$ eV ([Levinson and Eichler, 1993](#); [Vietri, 1995](#); [Waxman, 1995](#)).

In a baryonic outflow, the internal or external shocks accelerate protons that interact with the gamma rays and/or other protons inside the fireball, producing charged pions and kaons that subsequently decay into HENs ($\pi^\pm, K^\pm \rightarrow \mu^\pm + \nu_\mu/\bar{\nu}_\mu \rightarrow e^\pm + \nu_e/\bar{\nu}_e + \nu_\mu/\bar{\nu}_\mu$).⁸ Such neutrinos are emitted in spatial and temporal coincidence with the GRB prompt electromagnetic signal; their energy is typically in the range of \sim TeV to PeV. Neutrinos with higher (up to $\sim 10^{10}$ GeV) energy can also be emitted at the beginning of the afterglow phase, when the outflow is decelerated by external shocks with ambient material and the accelerated protons undergo interactions with the matter

⁷The latter statement has been criticized by several recently, arguing that the GRB energy production rate is too small to account for the flux of ultrahigh-energy cosmic rays (UHECRs); see, e.g., [Eichler, Guetta, and Pohl \(2010\)](#). However, the validity of this criticism was challenged by [Waxman \(2010\)](#).

⁸Relevant references on these mechanisms include [Eichler \(1994\)](#), [Paczynski and Xu \(1994\)](#), [Waxman and Bahcall \(1997\)](#), [Rachen and Mészáros \(1998\)](#), [Alvarez-Muñiz, Halzen, and Hooper \(2000\)](#), [Mészáros and Waxman \(2001\)](#), [Dermer and Atoyan \(2003\)](#), [Guetta and Granot \(2003\)](#), [Razzaque, Mészáros, and Waxman \(2003a, 2003b\)](#), [Guetta *et al.* \(2004\)](#), [Ando and Beacom \(2005\)](#), [Murase and Nagataki \(2006\)](#), and [Murase *et al.* \(2006\)](#).

outside of the jet ([Waxman and Bahcall, 2000](#)). An alternative mechanism for neutrino production in fireballs suggested by [Levinson and Eichler \(2003\)](#) involves neutral particles that are picked up by the stream when they acquire a charge, such as a decaying neutron or, further downstream, a neutral atom that is ionized. Such a particle is extremely energetic in the jet frame and immediately attains an energy of a PeV. The associated neutrinos come within an order of magnitude of that energy (~ 100 TeV), providing a harder spectrum than the one expected from shock acceleration.

It is expected that in the next few years neutrino telescopes will be sufficiently sensitive to test and distinguish between GRB models with different physics and to constrain the parameters of such models. The current nondetection of neutrinos from GRBs by IceCube ([Abbasi *et al.*, 2012a](#); see also Sec. III.B) already questions the viability of models in which ultrahigh-energy cosmic rays are the decay products of neutrons that have escaped the fireball with high energy. This upper limit is still consistent with the “standard” [i.e., following [Waxman and Bahcall \(1997\)](#)] predictions of neutrino emission from GRB fireballs ([Hummer, Baerwald, and Winter, 2012](#); [Li, 2012](#)). Given current uncertainties, significant constraints on this model will be obtained within 5–10 yrs of full IceCube operation as can be seen from Fig. 1 (right panel).

While gamma-ray and HEN emissions from GRBs are related to the mechanisms driving the relativistic outflow, GW emission is closely connected to the central engine and hence to the progenitor of the GRB. Short-hard GRBs are thought to be driven by neutron star–neutron star or neutron star–black-hole mergers.⁹ GW detectors can ideally observe those binary systems up to a distance of ~ 30 and ~ 440 Mpc for initial and advanced detectors, respectively ([Abadie *et al.*, 2010b](#)). These distances coincide with the range where the HEN flux is thought to be large enough for detection with

⁹This mechanism has been described, e.g., by [Eichler *et al.* \(1989\)](#), [Kochanek and Piran \(1993\)](#), [Bloom *et al.* \(2007\)](#), [Lee and Ramirez-Ruiz \(2007\)](#), [Nakar \(2007\)](#), and [Etienne *et al.* \(2009\)](#).

current HEN detectors. Note that these short GRBs are beamed and so is the expected HEN emission. Hence one can expect cases in which GWs will be observed from such sources without an observed GRB or HEN signal. However, an orphan afterglow (Levinson *et al.*, 2002; Nakar and Piran, 2003), macronovae (Li and Paczynski, 1998), or radio flares (Nakar and Piran, 2011) might be observed in these cases.

Weaker GW signals are expected in any source that accelerates relativistic jets (Piran, 2002). A few mechanisms have been suggested for GW generation in long-soft GRBs, which arise during the collapse of a massive star; see, e.g., Woosley and Bloom (2006) and references therein. According to the *collapsar* model proposed by Woosley and MacFadyen (1999), a long GRB arises when a relativistic jet, produced by a central inner engine, penetrates the stellar envelope of the collapsing star. The inner engine driving the jet can be either an accreting newborn black hole (Woosley and MacFadyen, 1999) or a newborn rapidly rotating magnetar (Usov, 1992). For accretion models, the high rotation rate required to form the accretion disk that powers the GRB may also lead to the production of GWs via bar or fragmentation instabilities in the accretion disks and also via the precession of the disks due to general-relativistic effects.¹⁰ Asymmetrically infalling matter produces the burst GW signals not only at the moment of the core bounce when the central density exceeds nuclear density (Kotake, Sato, and Takahashi, 2006; Ott, 2009), but also at the moment of the black-hole formation, followed by the subsequent ring-down phases (Ott *et al.*, 2011). Optimistic estimates based on semi-analytical calculations suggest that the GW signals from some of these mechanisms are high enough to be visible in Advanced LIGO class detectors up to a 100 Mpc distance scale; see Kotake, Takiwaki, and Harikae (2012). However, to obtain more quantitative predictions, full 3D simulations using general-relativistic magnetohydrodynamics and sophisticated neutrino transport schemes are needed. Much effort has been recently dedicated to this issue with encouraging results; see, e.g., Kotake *et al.* (2012), Kuroda, Kotake, and Takiwaki (2012), Muller, Janka, and Marek (2012), and Ott *et al.* (2012) for a review. Unfortunately, such studies suggest a very weak GW emission and, given the fact that the long GRB population is distributed over cosmological distances, seriously challenge the prospects for long GRB detection even in the next generation of GW detectors.

“Low-luminosity GRBs” (*l*GRBs) are a subclass of long-soft GRBs. *l*GRBs are characterized by luminosities lower by a few orders of magnitude than typical gamma-ray luminosities, a smooth, single-peaked light curve, and a soft spectrum. These bursts are associated with particularly energetic type Ibc core-collapse supernovae as observed in GRB 980425/SN 1998bw (Galama *et al.*, 1998; Kulkarni *et al.*, 1998), GRB 031203/SN 2003lw (Malesani *et al.*, 2004; Soderberg *et al.*, 2004), and GRB 060218/SN 2006aj (Campana *et al.*, 2006; Cobb *et al.*, 2006; Pian *et al.*, 2006; Soderberg *et al.*, 2006). It is interesting to note that most of

the GRB-SNe associations are with *l*GRBs and not with regular long GRBs. Less luminous than typical long GRBs, these events are (not surprisingly) discovered at much smaller distances (SN 1998bw at redshift $z = 0.0085$, about 40 Mpc away from Earth; SN 2003lw at $z = 0.105$, and SN 2006aj at $z = 0.033$). Remarkably, the event rate of *l*GRBs per unit local volume is more than 1 order of magnitude larger than that of conventional long GRBs; see, e.g., Coward (2005), Soderberg *et al.* (2006), Daigne and Mochkovitch (2007), Guetta and Della Valle (2007), and Liang *et al.* (2007). This makes this source population an interesting target of study from the GW and HEN point of view as well as discussed by Razzaque, Mészáros, and Waxman (2004), Murase *et al.* (2006), Gupta and Zhang (2007), and Wang *et al.* (2007).

Bromberg, Nakar, and Piran (2011) recently argued that, given their apparently low power, these *l*GRBs cannot arise from the regular collapsar model because the time needed for the jet to bore an escape channel through the host envelope would, in most reported cases, exceed the GRB duration. Rather, they may be gamma rays from shock breakout imparted to the host envelope by jets that fail to emerge (“choked jets”).¹¹ The smooth light curve and soft spectra of these events are indeed expected from shock breakout; see Waxman, Mészáros, and Campana (2007), Katz, Budnik, and Waxman (2010), and Nakar and Sari (2012). Other suggested models, which produce smooth, soft emission, include scattering of the gamma rays off an accelerating envelope or wind material (Eichler and Levinson, 1999), or gamma rays that are released from baryon-rich jet material (dirty fireballs) only after some adiabatic loss (Mandal and Eichler, 2010). It has also been suggested that *l*GRBs are associated with the formation of magnetars rather than black holes as argued for GRB060218 by Mazzali *et al.* (2006), a scenario that might give rise to somewhat longer GW signals (Corsi and Mészáros, 2009; Piro and Ott, 2011).

Regardless of the question of whether or not they produce *l*GRBs, such choked jet events are interesting objects on their own as pointed out by Eichler and Levinson (1999), Mészáros and Waxman (2001), and Ando and Beacom (2005). In fact, late-time radio emission of some type Ic supernovae indeed suggests the presence of mildly relativistic outflow (Granot and Ramirez-Ruiz, 2004; Soderberg, Frail, and Wieringa, 2004; Mazzali *et al.*, 2005; Soderberg *et al.*, 2010) that may indicate the activity of a jet in these cases. The expected overall energy budget of choked jets is comparable to the energy budget observed in regular GRBs.¹² Therefore, these choked jets could produce GWs and HENs¹³ in a way

¹¹Relevant references include MacFadyen, Woosley, and Heger (2001), Tan, Matzner, and McKee (2001), Campana *et al.* (2006), Wang *et al.* (2007), Waxman, Mészáros, and Campana (2007), Katz, Budnik, and Waxman (2010), and Nakar and Sari (2012).

¹²Note that if indeed a choked jet produces a *l*GRBs via shock breakout, the prompt gamma rays involve only a small fraction of the total energy (Bromberg, Nakar, and Piran, 2011; Nakar and Sari, 2012).

¹³The production of HEN is closely related to the efficiency of proton acceleration inside the jet, an issue which is still debated considering that the relevant shocks in these choked GRBs are expected to be radiation dominated (Levinson and Bromberg, 2008).

¹⁰See, e.g., Fryer and Woosley (1998), Davies *et al.* (2002), Fryer, Holz, and Hughes (2002), Kobayashi and Mészáros (2003), Piro and Pfahl (2007), Romero, Reynoso, and Christiansen (2010), and Sun *et al.* (2012).

comparable with regular GRBs; see [Eichler and Levinson \(1999\)](#), [Mészáros and Waxman \(2001\)](#), [Ando and Beacom \(2005\)](#), [Koers and Wijers \(2007\)](#), and [Horiuchi and Ando \(2008\)](#). As they are likely to be more numerous than regular GRBs (as is, for example, the case of *ll*GRBs), they could be observed from nearer distances. In such a case, optimistic estimates predict potentially detectable levels of both GW and HEN signals, and an observable occurrence rate in the volume probed by current GW and HEN detectors. For example, according to [Ando and Beacom \(2005\)](#), an ejected mass with a kinetic energy of 3×10^{51} erg and a Lorentz factor of 3 at 10 Mpc would generate ~ 30 neutrino events detected in a km^3 detector. These events should be seen accompanying some specific local core-collapse SNe. In this context, HEN and GW play an interesting role in revealing the inner choked jets nature of these sources.

B. Bounds on the GW and HEN time delay

The possible time delay between the arrival of GWs and HENs from a given source defines the coincidence time window to apply in a multimessenger search algorithm. This window should not be too small, which could lead to the exclusion of potential emission mechanisms, nor too large, which would decrease the detection sensitivity by including nonphysical coincidences. Upon detection, the difference between the times of arrival of GW and HEN signals can give us important clues about the emission mechanism. For instance, detecting a HEN prior to a GW signal may indicate that the strongest GW emission from the source is not connected to the onset of the activity of the central engine that one might expect from core-collapse models.

[Baret *et al.* \(2011\)](#) used model-motivated comparisons with GRB observations to derive a conservative coincidence time window for joint GW and HEN searches. Various GRB emission processes were considered, assuming that GW and HEN emission are connected to the activity of the central engine. Considered processes include prompt gamma-ray emission of GRBs, with a duration upper limit (~ 150 s) based on BATSE observations ([Paciesas *et al.*, 1999](#)), as well as GRB precursor activity, with an upper limit on the time difference (as compared to the onset of the main burst) of ~ 250 s, following the analysis of [Burlon *et al.* \(2009\)](#). Further processes considered include precursor neutrino emission, as well as ≥ 100 MeV photon emission from some GRBs, as detected by Fermi LAT ([Atwood *et al.*, 2009](#)). They concluded that GW and HEN signals are likely to arrive within a time window of ± 500 s, as illustrated in Fig. 2.

The time delay between HENs and GWs could be much smaller for binary mergers which are often mentioned as the possible progenitor of short-hard GRBs. The amount of accreted and ejected matter involved in such a case is very small, and the outflowing matter can expand unhindered, adding almost nothing to the time delay. A semianalytical description of the final stage of such mergers indicates that most of the matter is accreted within 1 s ([Davies, Levan, and King, 2005](#)), and numerical simulations of the mass transfer suggest time scales of milliseconds ([Shibata and Taniguchi, 2008](#)) to a few seconds maximum ([Faber *et al.*, 2006](#)).

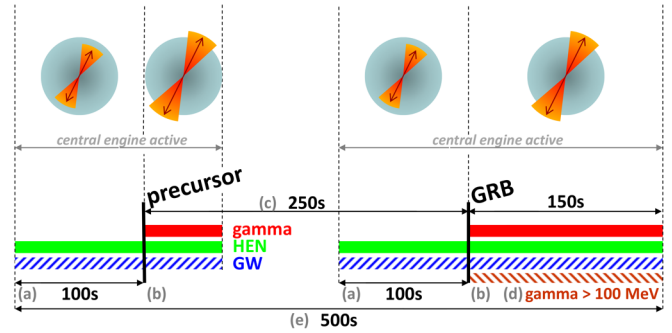


FIG. 2 (color online). Summary of the upper bounds on the duration of GRB emission processes taken into account in the total GW and HEN coincidence time window. (a) Active central engine before the relativistic jet has broken out of the stellar envelope [note that recent estimates of jet propagation within a stellar envelope suggest that this phase lasts typically 10–20 s; see [Bromberg *et al.* \(2011, 2012\)](#)]; (b) active central engine with the relativistic jet broken out of the envelope; (c) delay between the onset of the precursor and the main burst; (d) duration corresponding to 90% of GeV photon emission; (e) time span of central engine activity. The top of the figure shows a schematic drawing of a plausible emission scenario. From [Baret *et al.*, 2011](#).

Therefore, the GW signal is expected to arrive very close to HENs. A window of $[-5, +1]$ s around the trigger time, as used for (short) GRB-GW searches in [Abbott *et al.* \(2008\)](#) and [Abadie *et al.* \(2010c\)](#), seems reasonable.

III. GW AND HEN DETECTION: STATUS AND PROSPECTS

A. Interferometric gravitational-wave detectors

1. Detection principle and state of the art

The first generation of interferometric GW detectors included a total of six large-scale instruments. The U.S.-based Laser Interferometer Gravitational-Wave Observatory [LIGO, see [Abbott *et al.* \(2009\)](#)] was comprised of 3 km-scale instruments located in Livingston, Louisiana and Hanford, Washington (the latter hosted two interferometers in the same vacuum enclosure). The French–Italian project Virgo ([Accadia *et al.*, 2012](#)) had one instrument of the same class located in Cascina near Pisa, Italy. This set of kilometer-scale instruments was complemented by a couple of detectors with more modest dimensions (several hundreds of meters): GEO ([Grote, 2010](#)), a German-British detector in operation near Hanover, Germany and the Japanese prototype CLIO ([Agatsuma *et al.*, 2010](#)) located in the Kamioka mine.

Despite major differences in the technologies, all past and upcoming ground-based km-scale detectors measure gravitational waves through the same principle (see Fig. 3 for an illustration of the general scheme). They all sense the strain that a passing GW exerts on space-time by monitoring the differential length $\delta\ell$ of the optical path followed by two laser beams propagating along orthogonal directions. Measurement noises (mainly the thermal noise due to the Brownian agitation of the atoms constitutive of the main optics and the shot noise due to the quantum nature of light) can be reduced to reach the level of $h \equiv \delta\ell/L \sim 10^{-21}$, where h is the GW amplitude and L is the total optical path

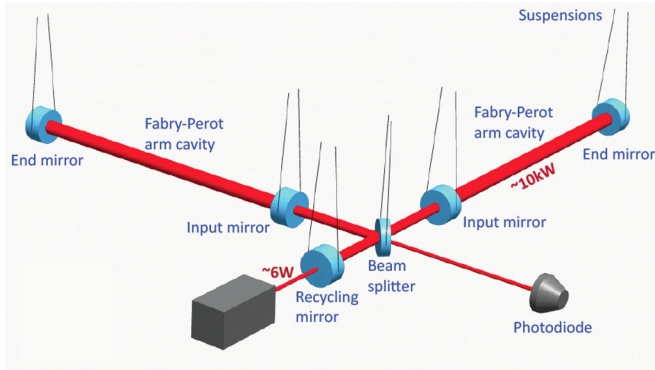
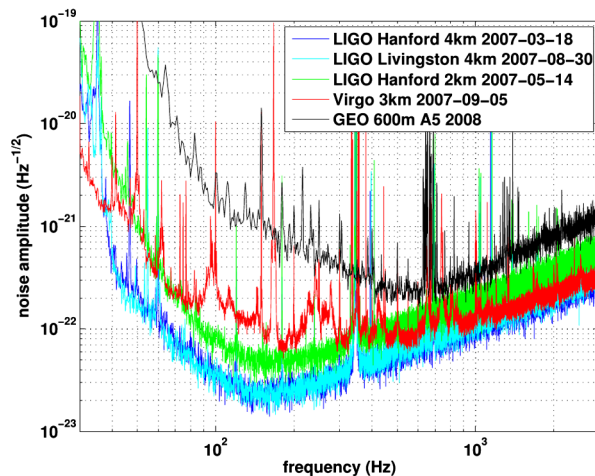


FIG. 3 (color online). Optical scheme of a gravitational-wave interferometric detector, consisting of two twin laser beams propagating in km-long arms oriented at 90° to each other. The Fabry-Pérot cavities enable the storage of the beams, thereby increasing by a significant factor their effective path length; the suspended, highly reflective mirrors play the role of test masses. A gravitational wave would cause a difference in the optical path lengths in each arm, which can be inferred by measuring the interference pattern at the photodiode. Adapted from Y. Aso (GECO, Columbia University).

length. This best sensitivity was achieved in a frequency band ranging from approximately ~ 100 Hz to 1 kHz (see Fig. 4) and approaches the optimistic theoretical expectations from the astrophysical sources presented earlier.

The initial LIGO and Virgo detectors have conducted several campaigns of joint data taking (“science runs”), as illustrated in Fig. 5. These data have been searched for a broad range of GW signatures. Those signatures are either from short transient sources associated with very energetic cataclysmic events like mergers of neutron star and/or black-hole binaries or from long-lived permanent sources such as deformed neutron stars or stochastic backgrounds resulting from the superposition of many unresolved sources. No gravitational wave has been detected so far, however, interesting upper limits were placed on the GW strain amplitude from a variety of targeted sources. We focus here on the first



| | 2007 | 2008 | 2009 | 2010 | 2011 | 2012 | 2013 | 2014 | 2015 | 2016 | 2017 |
|---------|------|------|------|-------|-------|---------------------|------|------|---------------|------------|------|
| ANTARES | 5L | 10L | 12L | | | KM3NeT | | | | | |
| IceCube | 9s | 22s | 40s | 59s | 79s | Ice Cube 86 strings | | | | | |
| LIGO | S5 | | | S6 | | | | | advanced LIGO | | |
| VIRGO | VSR1 | | VSR2 | VS R3 | VS R4 | | | | | Adv. VIRGO | |

FIG. 5 (color online). Time chart of the data-taking periods for the ANTARES (and KM3NeT), IceCube, LIGO, and Virgo experiments, indicating the respective (achieved or planned) upgrades of the detectors. The IceCube detector is now complete and will be operating for at least another 5 years, with possible upgrades in the meantime. The deployment of the KM3NeT neutrino telescope, which will take place in parallel with the operation of ANTARES, is expected to last 3–4 years, possibly starting in 2014. The detector will be taking data with an increasing number of photodetectors before reaching its final configuration. A larger-scale upgrade to the next generation of GW interferometers (Advanced LIGO and Virgo) is ongoing and data taking should start again around 2015.

category (transients) since it pertains to the main interest of this paper.

The two joint science runs conducted by LIGO and Virgo were labeled S5 for LIGO and VSR1 for Virgo for the first run, and S6 and VSR2/3 for the second. A total of 635 days of observing time have been analyzed (Abadie *et al.*, 2010a, 2012c). The upper limit (at 50% confidence level) on the GW strain obtained from an all-sky all-time search is slightly below $h_{\text{rss}} \lesssim 5 \times 10^{-22} \text{ Hz}^{-1/2}$ for waveform frequency at about 200 Hz, where the bound is on the root-square-sum amplitude $h_{\text{rss}}^2 \equiv \int dt (h_+^2(t) + h_\times^2(t))$ of the two GW polarizations h_+ and h_\times at Earth. Note that the exact result depends on the assumed GW model (the generic choice considered here are sine-Gaussian waveforms of various central frequencies). Assuming a linearly polarized wave and averaging over the inclination of the source, this strain limit corresponds to a GW burst energy of $2 \times 10^{-8} M_\odot c^2$ for a source at a galactic distance of 10 kpc, and $5 \times 10^{-2} M_\odot c^2$ for a source located in the Virgo cluster (at a distance of 15 Mpc). Those estimates are comparable to the expected

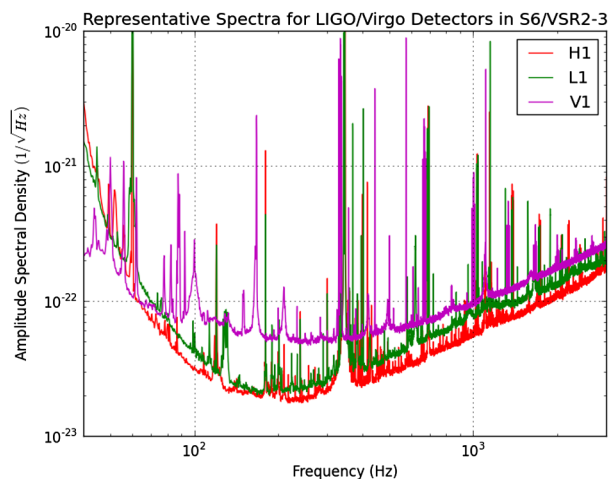


FIG. 4 (color online). Detector noise spectra from LIGO and Virgo associated with the two joint science runs, showing the increase of sensitivity of the detectors. Left panel: The best sensitivity associated with S5/VSR1 data set (2007), along with that of GEO (2008). From Abadie *et al.*, 2011a. Right panel: Typical sensitivities for LIGO and Virgo associated with S6/VSR2-3 (2009–2010) data sets. From Abadie *et al.*, 2012e.

GW-radiated energy from core collapses and mergers of stellar-mass compact objects, respectively. The same data, when searched specifically for inspiraling binaries of neutron stars, led to an upper limit on the rate of such astrophysical events of $\mathcal{R}_{90\%} = 1.3 \times 10^{-4} \text{ yr}^{-1} L_{10}^{-1}$ (Abadie *et al.*, 2010d, 2012d) which is still 2 orders of magnitude larger than the rate estimate obtained from population models (Abadie *et al.*, 2010b).

The building of the next generation of GW instruments is under way, with data collection expected to start around 2015. Following Abadie *et al.* (2010b), source population models imply that direct detection of gravitational waves can be achieved within the next decade by such advanced ground-based GW detectors: Advanced LIGO¹⁴ in the USA (Harry, 2010), Advanced Virgo¹⁵ in Italy, and KAGRA in Japan (Kuroda, 2010). There is now a proposal (still to be approved by U.S. and Indian institutions) to move one of the three Advanced LIGO detectors to a new observatory in India. If this plan materializes, the detector at the Indian site would start operation around 2020. These detectors will offer a tenfold sensitivity increase over the initial detectors around 100 Hz and will extend the observable frequency range by almost a decade down to 10 Hz. Observation-based models predict a detectable rate for binary neutron star coalescence between about 0.4 and 400 events annually (Abadie *et al.*, 2010b).

2. Multimessenger strategies

The GW and HEN program discussed here is one example of a number of efforts to develop joint analyses targeting GWs and other cosmic messengers. Another class of examples are the searches for GW transients in coincidence with (or “triggered” by) the high-energy photons from (short and long) GRBs [see, e.g., Abadie *et al.* (2010c) and Abbott *et al.* (2010) and references therein] and SGRs [see, e.g., Abadie *et al.* (2011a) and references therein]. Since, in this case, the event time and the sky direction of the source are known, a more sensitive and narrowly focused search can be conducted relative to the aforementioned all-sky searches. Two cases, GRB 070201 and GRB 051103, have received particular interest (Abbott *et al.*, 2008; Abadie *et al.*, 2012a). The error box on the location of those two GRBs overlaps with close galaxies M31 and M81, respectively. The analysis of GW data in coincidence with both GRBs yielded a null result. Under the assumption that the progenitors of those events are located in the identified host galaxies, binary mergers (or any other source emitting more than $\sim 10^{-4} M_{\odot} c^2$ as GW transients) are excluded with high confidence from this nondetection statement. It is also worth mentioning that an electromagnetic follow-up program of candidate GW triggers has been performed during S6-VSR2/3 (Abadie *et al.*, 2012b). This program involved a range of robotic telescopes including the Liverpool Telescope, the Palomar Transient Factory, Pi of the Sky, QUEST, ROTSE, SkyMapper, TAROT, and the Zadko Telescope observing the sky in the optical band, the *Swift*

satellite with x-ray and UV-optical telescopes, and the radio interferometer *LOFAR*.

For more details on direct detection of gravitational waves and its implications for astrophysics and cosmology, see Sathyaprakash and Schutz (2009).

B. High-energy neutrino telescopes

1. Detection principle and state of the art

Given the very weak neutrino cross section and the typical astrophysical spectra falling as a power law at high energies, HEN astronomy requires the instrumentation of large ($\sim 1 \text{ km}^3$) volumes of target material. The concept of neutrino telescopes appeared in 1961 when M. A. Markov proposed to use the water of deep lakes or the sea to detect the secondary muons created in the charged-current interaction of HEN with nuclei. The Cherenkov light emitted by the muon in a transparent medium can be used to infer the arrival direction of the neutrino (Markov, 1960; Markov and Zheleznykh, 1961). This detection principle takes advantage of the fact that the muon track can be several kilometers long, thus enhancing the effective volume of the detector. Such neutrino telescopes have been built in the form of three-dimensional arrays of PMTs embedded in pressure-proof glass spheres arranged on vertical cable strings, with an interstorey spacing of a few tens of meters and an interstring distance up to about 100 m; see Fig. 6 for an illustration of this detection principle. Knowledge of the timing and amplitude of the light pulses recorded by the PMTs allow reconstruction of the trajectory of the muon as well as inference of the arrival direction of the incident neutrino.

These detectors have to cope with a large background of high-energy muons originating in the air showers generated by the interaction of high-energy cosmic rays with the atmosphere. They are therefore installed beneath thousands of meters of water-equivalent shielding, restricting the possible sites to deep lakes, the deep sea, or the South Pole glacier. Even with this shielding, the rate of atmospheric muons is several orders of magnitude above the rate of genuine atmospheric neutrinos, i.e., neutrinos created in cosmic-ray interactions in the atmosphere. To further reduce this background, the detectors are optimized to detect upgoing muons produced by neutrinos that have traversed the Earth (which acts as a shield against all other particles). The field of view of neutrino telescopes is therefore $2\pi \text{ sr}$ for neutrino energies $100 \text{ GeV} \leq E_{\nu} \leq 100 \text{ TeV}$; a detector placed in the southern (northern) hemisphere will observe the northern (southern) sky. Above this energy, the sky coverage is reduced because of neutrino absorption in the Earth. However, it can be partially recovered by looking for horizontal and downward-going neutrinos, which can be more easily separated from the background of atmospheric muons because of their much higher energies.

Three neutrino telescopes are currently operating worldwide. The most advanced is IceCube (Halzen and Klein, 2010), which has recently achieved its final configuration with 86 strings, instrumenting 1 km^3 of South Pole ice at depths between 1500 and 2500 m (see right panel of Fig. 6). IceCube possesses a denser infill of six additional strings dubbed as DeepCore (Abbasi *et al.*, 2012e), which extends

¹⁴<https://www.advancedligo.mit.edu>.

¹⁵<http://www.cascina.virgo.infn.it/advirgo/>.

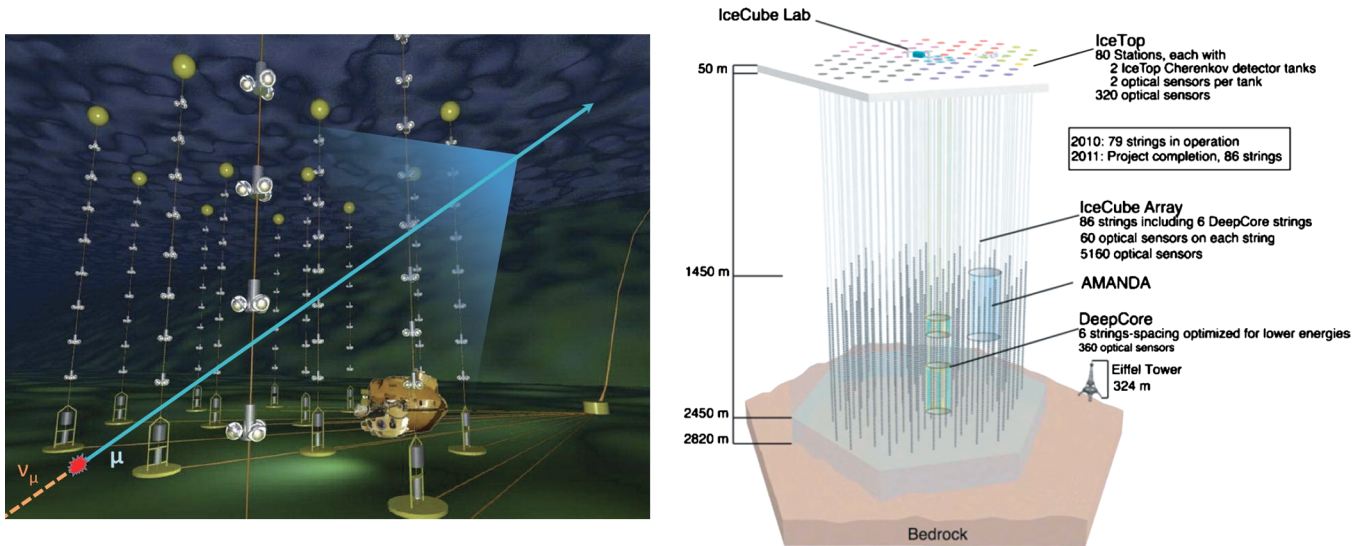


FIG. 6 (color online). Left: Schematic view of the ANTARES detector, with an illustration of its detection principle: an upgoing ν_μ interacting with matter in the seabed will produce a muon that can cross the detector, emitting a cone of Cherenkov light that will be detected by the array of photosensors. ANTARES consists of 12 instrumented lines anchored to the seabed at a depth of 2475 m, about 40 km off the coast of Toulon (France). The lines are 450 m long and kept up by a buoy; each of them supports 25 detection storeys separated by 14.5 m and supporting triplets of optical modules looking 45° downward. The interline separation is about 70 m. Adapted from <http://antares.in2p3.fr>. Right: Schematic view of the IceCube detector at the South Pole. The strings are deployed from the surface and instrumented between 1450 and 2450 m; every string supports 60 optical modules enclosing one downward-looking PMT each. The interline separation is about 125 m. The sketch also shows the position of the prototype detector AMANDA, of the low-energy infill DeepCore, and of the surface array IceTop. From <http://icecube.wisc.edu>.

its detection capabilities at lower energies (down to ~ 10 GeV). It is also complemented on the surface by a 1 km^2 air shower array named IceTop (Abbasi *et al.*, 2013), which is used for cosmic ray composition studies, and in coincidence with the in-ice detector. Another neutrino telescope has been operating for some years in Lake Baikal (Aynutdinov *et al.*, 2011) in a much smaller configuration; it recently deployed three prototype strings for a km^3 scale detector. Finally, ANTARES (Ageron *et al.*, 2011) is a neutrino telescope deployed at depths from 2000 to 2500 m in the Mediterranean Sea, near Toulon (France); it has been operating in its complete, 12-line configuration since mid-2008 (see left panel of Fig. 6). ANTARES has been joined by the two prototype projects NEMO (Taiuti, 2011) and NESTOR (Rapidis, 2009) in forming the European Consortium KM3NeT which aims at the construction of a km^3 scale telescope in the Mediterranean, whose operation could start in 2014 (Kooijman, 2013). This second kilometer-scale project would allow all-sky coverage, and, in particular, the monitoring of a large fraction of the galactic plane, which contains many potential sources. An interesting characteristic of these detectors is the ability to take data during the construction phase; each data-taking configuration is labeled by the number of functioning detector lines (or strings). Detector performance, as measured by, e.g., effective area and pointing accuracy, then improves as new lines are added. The time chart in Fig. 5 presents the different phases of operation of the IceCube and ANTARES telescopes from 2007 onward.

No evidence for a cosmic neutrino has yet been claimed by any of these detectors.¹⁶ Limits have been set both for point

sources (Abbasi *et al.*, 2011d; Adrian-Martinez *et al.*, 2012a) and for the diffuse all-sky flux expected from the large-scale distribution of sources which are individually too faint to resolve (Abbasi *et al.*, 2011a; Aguilar *et al.*, 2011). Figure 7 presents the latest published results of ANTARES and IceCube searches for pointlike sources of high-energy neutrinos, showing a significant increase in sensitivity with respect to the previous generation of detectors such as Super-Kamiokande and MACRO.

2. Multimessenger strategies

A wide variety of generic and specialized searches is also performed on the neutrino data, many of which make use of time-dependent observations from photon experiments. Searches have been performed for neutrinos in coincidence with flares from active galactic nuclei (Abbasi *et al.*, 2012f; Adrian-Martinez *et al.*, 2012b) and from the Crab nebula (Abbasi *et al.*, 2012b), for periodic neutrino emission from binary systems (Abbasi *et al.*, 2012c), and for neutrinos from GRBs (Abbasi *et al.*, 2009a, 2011c; Adrian-Martinez *et al.*, 2013).

The IceCube Collaboration recently published the most stringent limit to date on HEN emission in coincidence with GRBs (Abbasi *et al.*, 2012a). Two differently optimized analyses have been performed using 2 years of data collected by the partially constructed detector between 2008 and 2010. No candidate neutrino events were found in either analysis. This yields upper limits below many earlier model predictions, in particular, those postulating that GRBs are the source of UHECRs, making it possible to put strong constraints on model parameters like the jet Lorentz factor or the ratio of energy in protons to the energy in leptons in the jet. As stated

¹⁶See, however, Aartsen *et al.* (2013).

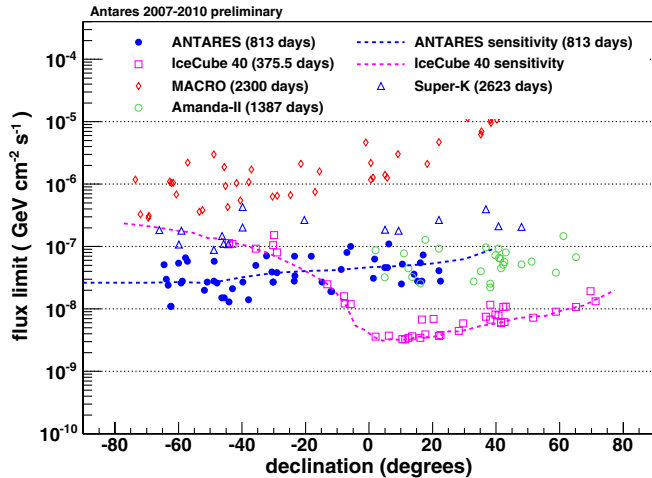


FIG. 7 (color online). Current experimental sensitivities to differential cosmic neutrino flux $E^{-2}dN/dE$ (dotted lines) and limits (points) as a function of declination for time-integrated searches of pointlike sources. The results of AMANDA-II (Abbasi *et al.*, 2009b) and its successor IceCube, in its 40-string configuration (Abbasi *et al.*, 2011d), as well as those of ANTARES; also displayed are the limits from the MACRO (Ambrosio *et al.*, 2001) and Super-Kamiokande (Thrane *et al.*, 2009) experiments, which are not principally devoted to neutrino astronomy. From Adrian-Martinez *et al.*, 2012a.

in Sec. II.A.2, it is important to note that this does not rule out the fireball phenomenologically; rather, it shows that detectors are now becoming sensitive enough to test many existing models and constrain their parameters. Furthermore, neutrinos that are predicted in afterglow models at higher energies and in precursor models at lower energies are not yet constrained by existing data.

Additionally, the near-simultaneous arrival of two or more neutrinos from the same direction could indicate that a highly energetic burst has occurred. If this is detected in real time, then neutrino telescopes can be used as triggers for optical, x-ray, and gamma-ray follow-ups. IceCube and ANTARES currently have alert programs established or in development with fast optical telescope networks like ROTSE and TAROT, and gamma-ray telescopes such as Swift, Fermi, MAGIC, and VERITAS; see, e.g., Franckowiak *et al.* (2009), Van Elewycyk (2011), and Ageron *et al.* (2012). The ROTSE optical follow-up program implemented for neutrino multiplets detected with IceCube has been used to search for soft relativistic jets in core-collapse supernovae, yielding negative results so far (Abbasi *et al.*, 2012d).

“All-sky” instruments like neutrino telescopes and GW detectors thus provide an opportunity to alert pointing instruments before or concurrent with an interesting astronomical event in addition to enabling more powerful joint searches for bursts in a completely offline way after the data have been recorded. It should be noted that an analogous possibility exists for much lower energy neutrinos. Because the PMT dark noise rate is particularly low in ice, the IceCube detector is sensitive to sudden fluxes of MeV neutrinos which lead to collective rise in the PMT rates. Nearby supernova up to 50 kpc can be detected this way. IceCube is therefore part of the SuperNova Early Warning System (SNEWS), sending real-time triggers when the collective PMT rate passes a given

threshold; see Kowarik *et al.* (2009) and Abbasi *et al.* (2011b). As with high-energy neutrino data, an offline analysis with other all-sky instruments, like GW detectors, is also possible. While the MeV neutrino signal does not provide any directional information, the time-coincidence search would allow exploring the data below the higher threshold required for SNEWS (Halzen and Raffelt, 2009).

More information on the experimental aspects and physics reach of high-energy neutrino astronomy can be found in recent reviews by Anchordoqui and Montaruli (2010), Chiarusi and Spurio (2010), Baret and Van Elewycyk (2011), and Katz and Spiering (2012).

IV. PERSPECTIVES FOR THE JOINT DATA ANALYSIS

A. GW data analysis

GW signals are expected to be infrequent and have low signal-to-noise ratios (SNRs) in both the current and next generation of ground-based detectors. Searching for GW transients therefore consists of searching for weak and rare signatures in long duration time series. The identification of these weak signals is confounded by the presence of “glitches”: non-Gaussian, nonstationary fluctuations in the background noise. Glitches are produced by a variety of environmental and instrumental processes, such as local seismic noise or saturations in feedback control systems. Since glitches occasionally occur nearly simultaneously in separate detectors by chance, they can mimic a GW signal (Blackburn *et al.*, 2008). The presence of glitches is currently the main limiting factor to the sensitivity of searches for transient GW. In this section, we review the various techniques in use to discriminate between true signals and background noise. We then examine the source localization and angular accuracy of networks of multiple GW detectors.

1. Multidetector coherent analysis and background rejection

Coherent excess power methods¹⁷ used to search for unmodeled GW bursts require that the signals received by all detectors be consistent in time and phase. Concretely this is realized by combining the data streams from multiple detectors, taking into account the antenna response and noise level of each detector so that the sum operates constructively for a GW burst from a given sky direction. The data stream which results from this coherent combination maximizes the SNR. It is used to produce a time-frequency map of the signal energy (equivalently, the SNR), which is then scanned for transient excursions (or *events*) that may be GW signals. Each event is characterized by a measure of significance, based on energy and/or correlation between detectors, as well as its time-frequency properties.

It is also possible that cross correlating data from multiple detectors can result in interference between the GW signals, suppressing the signal rather than background glitches. The energy in these “null” stream(s) may be used to reject or

¹⁷See, for example, Guersel and Tinto (1989), Flanagan and Hughes (1998), Anderson *et al.* (2001), Chatterji *et al.* (2006), Mohanty *et al.* (2006), Rakhmanov (2006), Klimenko *et al.* (2008), and Summerscales *et al.* (2008).

down-weight events that are inconsistent with a gravitational wave. The success of such tests depends critically on having several independent detectors of comparable sensitivity. Cross correlation with auxiliary non-GW sensitive channels (which monitors the global status and environment of the GW detector) also provides an important resource for background rejection.

For certain sources, the expected GW signature is known. Such morphological information may help distinguish a real signal from background noise. This is the case for the coalescence of two compact objects, e.g., two neutron stars or a neutron star and a black hole. “Template waveforms” for such sources are obtained from post-Newtonian approximations of the binary dynamics in their inspiral phase (Blanchet, 2002; Buonanno, Cook, and Pretorius, 2007). The search for signals with this specific morphology is realized by matched-filter algorithms which cross correlate the data with the templates (Allen *et al.*, 2012; Harry and Fairhurst, 2011).

2. Source localization

GW detectors are nonimaging instruments with a nearly omnidirectional response. Source localization therefore requires multiple detectors; the relative amplitudes and time delay between signals received at different locations allows for triangulation of the source. Several methods of localization have been investigated.¹⁸ Fairhurst (2009) gave the following approximation for the timing accuracy of a GW signal: $\sigma_t \sim (2\pi\sigma_f\rho)^{-1}$, where σ_f is the effective bandwidth of the source and ρ is the SNR. For nominal values $\sigma_f = 100$ Hz and $\rho = 8$, timing accuracies are on the order of 0.1 ms. This can be compared to the light travel time between detectors, 10–30 ms for the LIGO-Virgo network. For example, for a binary coalescence signal at the threshold of detectability, Fairhurst (2009) estimated a best-case localization of 20 deg² (90% containment), and a typical localization of twice this. Additional constraints provided by other instruments with a better angular accuracy such as HEN telescopes can therefore significantly help improve the source localization.

B. HEN data analysis

The searches for astrophysical point sources of HEN rely principally on charged-current interactions of muon neutrinos. At the energies probed by neutrino telescopes, the outgoing muon can travel from hundreds of meters up to many kilometers, and the direction of the muon is nearly collinear with the original direction of the neutrino. Cherenkov photons propagating from the track are detected by an array of photomultiplier tubes, and the relative timing of the photon hits is used to reconstruct the muon direction. The angular resolution is limited by the number of hits detected and by any distortions in the photon arrival times due to scattering in the water or ice. Higher energy muons are generally better

reconstructed, since they travel farther, providing a longer lever arm for reconstruction, and since more photons are emitted in stochastic energy losses along the path.

The track reconstruction principle is to maximize the likelihood of time residuals of photon hits, but this is complicated by the presence of the abundant background of atmospheric muons. At the reconstruction level, the rate of downgoing atmospheric muons that are wrongly reconstructed as upgoing tracks is still several orders of magnitude larger than the rate of genuine upgoing muon events that come from atmospheric neutrinos that have traversed the Earth. This background of misreconstructed tracks can be reduced to about a few percent of the bulk of upgoing atmospheric neutrinos by applying quality cuts, e.g., on the likelihood of the track. The angular resolution above 10 TeV is essentially determined by the scattering length of light in the medium, yielding a median error angle on the neutrino direction of about 0.1° in the deep sea and 0.5° in the South Pole glacier for telescopes of km³-scale size.

The energy of the incoming neutrino is estimated based on the amount of Cherenkov light detected from the muon track. The simplest estimator is the total number of photon hits detected from the track. Given that only a fraction of the muon track is contained in the instrumented volume, the resolution is intrinsically limited and is usually a lower bound, since a muon from a high-energy neutrino interaction many kilometers away will lose a large fraction of its energy before reaching the detector. On the other hand, the observation of a large number of photons from a track unequivocally signals a high-energy event. Therefore energy estimation can still be used to distinguish cosmic neutrinos from atmospheric ones, because the atmospheric spectrum is known to fall steeply with energy ($\sim E^{-3.7}$), whereas cosmic fluxes can be much harder with a typical E^{-2} spectrum extending to PeV energies.

At energies well above a TeV, upgoing tracks are generally straightforward to separate from the misreconstructed muon background. At lower energies, the smaller number of photon hits makes it increasingly difficult to perform this separation. Steady point source searches often place less emphasis on this low-energy range, because the steepness of the atmospheric neutrino background means that even if a high purity neutrino sample is obtained, the low-energy region is dominated by the pileup of atmospheric neutrinos. However, on very short time scales such as approximately second-long bursts, even the atmospheric neutrino background is small. This means that more powerful event selection methods, for instance, machine learning algorithms like boosted decision trees, can be used to separate lower energy neutrino events from the misreconstructed muon background. The development of these techniques will play an important role in searches for objects like choked GRBs, where the neutrino energies may be at \sim TeV and below.

C. HEN-triggered GW searches

One of the simplest GW and HEN coincidence searches that may be performed would search the GW data around the neutrino arrival time in the estimated direction of the neutrino candidate. Thanks to the reduction in the volume of analyzed

¹⁸See, e.g., Guersel and Tinto (1989), Wen and Schutz (2005), Cavalier *et al.* (2006), Rakhmanov (2006), Acernese *et al.* (2007), Markowitz *et al.* (2008), Searle *et al.* (2008), Wen, Fan, and Chen (2008), Fairhurst (2009), Searle, Sutton, and Tinto (2009), and Wen and Chen (2010)

data, such triggered GW searches can be run with a lower event detection threshold than an untriggered search, leading to a higher detection probability at a fixed false alarm probability and better limits in the absence of detection. Similarly, the *a priori* knowledge of the source direction allows for searching only a small part of the sky and veto candidate events seen in multiple detectors at times not consistent with the expected GW arrival time difference. In fact, the number of accidental coincidences between GW detectors decreases with the size of the search time window. Thus, the use of an external trigger can be a very effective tool for a successful search of GW signals. A variety of algorithms for triggered searches have been developed. We focus here on two examples which are currently used in the context of HEN-triggered searches: the burst search algorithm dubbed as a X-pipeline (Sutton *et al.*, 2010), and the stochastic transient analysis multidetector pipeline (STAMP) search algorithm for extended GW emission (Thrane *et al.*, 2011).

The X-pipeline is a coherent technique that has been used to perform searches for GWs in association with GRBs (Abbott *et al.*, 2010). It is a software package designed for autonomous searches for unmodeled GW bursts. It targets GW bursts associated with external astrophysical triggers such as GRBs or neutrinos. It performs a coherent analysis of data from arbitrary networks of GW detectors, while being robust against noise-induced glitches. This allows the analysis of each external trigger to be optimized independently, based on background noise characteristics and detector performance at the time of the trigger, maximizing the search sensitivity and the chances of making a detection. The pipeline also accounts for effects of uncertainties in the results such as those due to calibration amplitude, phase, and timing.

STAMP is a cross-correlation-based algorithm that looks for structures due to GWs in cross-power frequency-time maps (Thrane *et al.*, 2011). Cross-power maps are produced by cross correlating strain data from two spatially separated GW detectors after applying a filter function. By choosing a proper filter function, STAMP can search for a GW signal from a particular direction in the sky. Because of its cross-correlation approach, STAMP mitigates noise glitches due to environmental factors. In STAMP, the SNR of any GW signal will increase as \sqrt{T} , where T is the duration of the signal. This makes STAMP suitable for GW signals with duration of tens of seconds to weeks while the X-pipeline is more commonly applied to signals with duration of seconds or less.

In this context, a neutrino source will be characterized by a set of inputs for the search algorithms: its sky position, as given by the direction of the reconstructed muon track in the neutrino telescope, the associated (and possibly direction-dependent) point-spread function of the detector, the neutrino arrival time, which defines the trigger time t_0 , and the range of possible time delays (positive and negative) Δt between the neutrino signal and the associated GW signal, which is astrophysically motivated, as discussed in Sec. II.B. The latter quantity is referred to as the *on-source* window for the neutrino; this is the time interval which is searched for GW candidate signals.

A crucial part of the procedure is the estimation of the background distributions, which is performed on the data pertaining to an *off-source* time window, typically covering

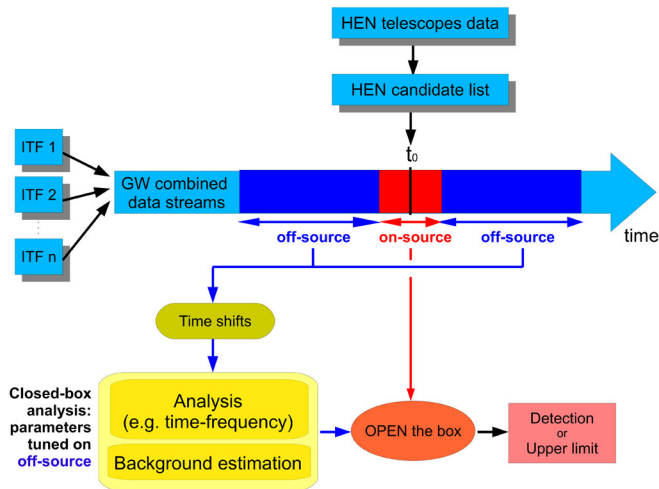


FIG. 8 (color online). Schematic flow diagram of a HEN-triggered search for GWs. Each neutrino candidate (with its time and directional information) provided by a HEN telescope acts as an external trigger for the X-pipeline, which searches the combined GW data flow from all active interferometers (ITFs) for a possible concomitant signal. The size of the spatial search window is related to the angular accuracy associated with each HEN candidate. The background estimation and the optimization of the selection strategy are performed using time-shifted data from the off-source region in order to avoid contamination by a potential GW signal. Once the search parameters are tuned, the box is opened and the analysis is applied to the on-source data set.

about 1.5 h around the neutrino time trigger and excluding the on-source interval. This strategy ensures that the background does not contain any signal associated with the neutrino event but has similar statistical features as the data searched in association with the neutrino. This time range is limited enough so that the detectors should be in a similar state of operation as during the neutrino on-source interval, but long enough to provide off-source segments for estimating the background. A schematic flowchart of this analysis strategy is presented in Fig. 8.

A GW burst search with the X-pipeline was performed using a list of 158 ANTARES 5L neutrino candidates as external triggers. These triggers were obtained during the data-taking period from February to September 2007, in coincidence with initial LIGO (S5) and Virgo (VSR1) detectors (Adrian-Martinez *et al.*, 2013) Each selected HEN was characterized by its time, arrival direction, and angular uncertainty which defines the size of the spatial box to be searched for a GW signal.¹⁹ Consistent with Baret *et al.* (2011), the on-source window was defined as a symmetrical interval of ± 500 s around the HEN time, in which data were searched for GW signals of different durations by means of a time-frequency analysis. The event-per-event significance of the resulting GW candidates was estimated by performing the same analysis on the off-source window, where no signal was expected. To account for the trial factor due to the number of HEN events analyzed, a binomial test was then applied to

¹⁹More precisely, the scan of the angular search window performed by the X-pipeline was weighted using a log-normal parametrization of the HEN point-spread function.

search for a cumulative excess above the expected background level, following a procedure already applied to the GRB-triggered GW searches in [Abbott *et al.* \(2010\)](#). No significant excess was found, meaning that no coincident GW and HEN event was observed.

The obtained nondetection can be used in an astrophysical context to place limits on the density of joint GW and HEN emission events within the horizon of HEN and GW detection. The size of this horizon is related to both GW and HEN detection efficiencies and can be estimated for typical emission models. In this particular analysis, two generic classes of models were considered: the final phase of a binary coalescence (short GRB like, SGRB), or the collapse of a massive object (long GRB like, LGRB), both followed by the emission of a relativistic hadronic jet responsible for the emission of HENs. To assess the GW sensitivity, simulated signals were injected into the on-source data. The injected signals consisted of inspiral waveforms (SGRB class) or Gaussian-modulated sinusoids at different frequencies (LGRB class). The amplitude of the minimal detectable signal can then be translated into an exclusion distance for the source. In both scenarios,²⁰ typical horizon distances are found to be in the range of 1–20 Mpc. The HEN horizon of ANTARES for this search was estimated using the GRB flux predictions by [Guetta *et al.* \(2004\)](#) and found to be of the same order of magnitude. From these estimates, [Adrian-Martinez *et al.* \(2013\)](#) inferred limits on the population density of $\sim 10^{-2} \text{ Mpc}^{-3} \text{ yr}^{-1}$ for SGRB-like sources and $\sim 10^{-3} \text{ Mpc}^{-3} \text{ yr}^{-1}$ for LGRB-like sources, to be compared with current estimations of the local rate of potential progenitors, such as binary mergers for SGRB [$\sim 10^{-6} \text{ Mpc}^{-3} \text{ yr}^{-1}$, see [Kalogera *et al.* \(2004\)](#) and [Belczynski *et al.* \(2011\)](#)] or type Ibc and type II core-collapse supernovae for LGRB [respectively, $\sim 2 \times 10^{-5} \text{ Mpc}^{-3} \text{ yr}^{-1}$, see [Guetta and Della Valle \(2007\)](#) and $\sim 2 \times 10^{-4} \text{ Mpc}^{-3} \text{ yr}^{-1}$, see [Bazin *et al.* \(2009\)](#)].

While the limits from this analysis using first-generation detectors still appear too high by a few orders of magnitude, one can expect that similar studies conducted with enhanced detectors will reach the required sensitivity to start constraining the astrophysical parameters, at least for some classes of models. Such an improvement will be made possible not only thanks to the increase in sensitivity of the detectors themselves, but also thanks to the implementation of new strategies for the data analysis. Reconstruction strategies yielding a better angular accuracy for the HEN candidates, and GW search algorithms that can afford the computational cost of processing $\mathcal{O}(10^3)$ candidate events will be important ingredients for a jointly optimized GW and HEN search with ANTARES 12L, Virgo VSR2/3, and LIGO S6 data.

D. Baseline search with combined HEN and GW event lists

A baseline search with independent lists of HEN and GW candidates, as described in [Baret *et al.* \(2012\)](#), provides an advanced and interesting perspective for data analysis

compared to more traditional externally triggered searches, e.g., with EM GRB observations. While EM observations of GRBs allow for searches for GW or HEN signals from a precisely determined time and direction, the joint search for GW and HEN signals with no EM counterpart relies on the combination of significance and directional probability distribution from these two messengers. Similar to how multiple GW detectors are effective in rejecting glitches from the non-Gaussian background noise by requiring the coincident occurrence of an astrophysical signal in spatially separated GW detectors, requiring spatial and temporal coincidences from independent GW and HEN signal candidates can greatly reduce the false alarm rate ([Aso *et al.*, 2008](#)). The possibility that multiple neutrinos are detected from the same astrophysical source can also be considered, e.g., if several neutrino candidates happen to fall within a predefined space-time window.

Because of the uncertainty of directional reconstruction, especially for GWs, one can also enhance background rejection by using the expected source distribution in the nearby universe ([Baret *et al.*, 2012](#)). Such distribution is not uniform; it can be based on the distribution of nearby galaxies and their weight. The density of at least some GW and HEN sources can be connected to the blue luminosity of galaxies ([Phinney, 1991](#); [White, Daw, and Dhillon, 2011](#)), while source density can also depend on the type of the galaxy ([de Freitas Pacheco *et al.*, 2006](#); [O'Shaughnessy, Kalogera, and Belczynski, 2010](#)). For galactic sources, the matter distribution within the Milky Way could also be taken into account.

The search for joint GW and HEN signal candidates aims for the detection of a single astrophysical signal with high enough significance to claim detection. Another possibility is to aim for a set of weaker signals that could not be detected individually, but which have a joint distribution that differentiates them from the background. Such a technique has been used in

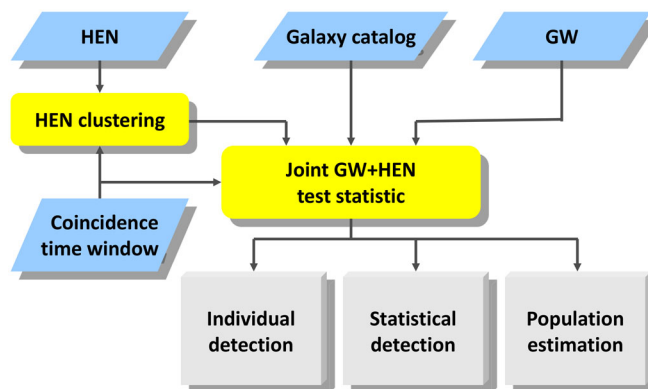


FIG. 9 (color online). Schematic flow diagram of a joint GW and HEN search pipeline. The inputs of the pipeline are, besides data from HEN and GW detectors, the astrophysical source distribution from a galaxy catalog, as well as the coincidence time window used for the search. Spatially and temporally coincident neutrinos can be clustered, potentially increasing the significance and decreasing the false alarm rate of a coincident GW and HEN signal. Combining this information in a joint test statistic, one can evaluate the results to look for individual or statistical detection of signal candidates. Upon nondetection, the results can be used to determine an upper limit on the source population.

²⁰Note that for sine-Gaussian signals, the optimistic assumption of a fixed energy of $E_{\text{iso}}^{\text{GW}} = 10^{-2} M_{\odot} c^2$ emitted in gravitational waves was used in that work.

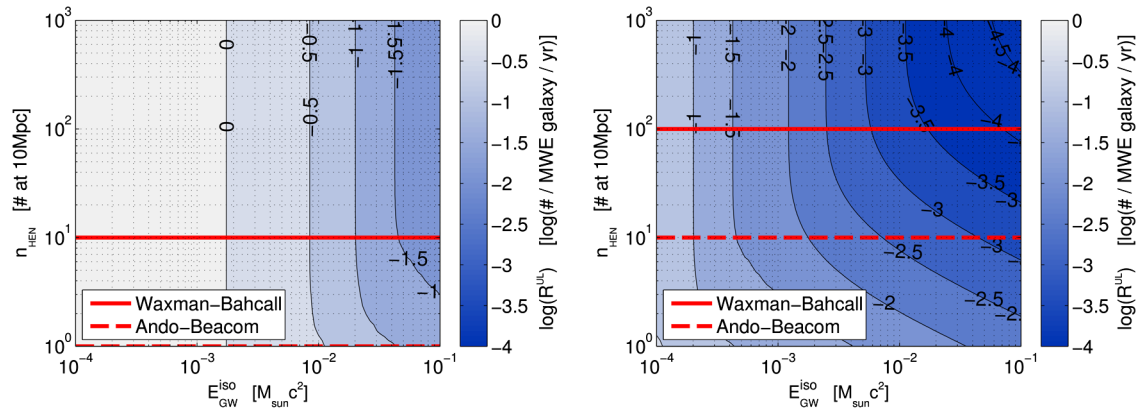


FIG. 10 (color online). Expected upper limits for a GW and HEN source population as inferred from a joint GW and HEN search with 1 yr of coincident observation time, respectively, with IceCube IC22 and initial Virgo and LIGO detectors (left panel), and with full IceCube IC86 and Advanced Virgo and LIGO detectors (right panel). The results take into account the blue-luminosity-weighted galaxy distribution. The benchmark source parameters are $E_{\text{iso}}^{\text{GW}}$ (total energy emitted in GW) and n_{HEN} (number of detected neutrinos from a source at 10 Mpc). The population rate upper limit (color scale) is expressed in logarithmic units of the number of sources per Milky Way-equivalent galaxy per year. The horizontal lines show predictions for n_{HEN} from the emission models of Waxman and Bahcall (1997) and Ando and Beacom (2005). From Baret *et al.*, 2012.

various searches for GWs; see, e.g., Abbott *et al.* (2010). A schematic flow diagram of a joint search algorithm is shown in Fig. 9; more details can be found in Baret *et al.* (2012). The outcome of such a search can also be used to constrain the population of astrophysical GW and HEN sources, as described in Bartos *et al.* (2011). As an illustration, Fig. 10 shows the expected upper limits on the GW and HEN source population that could be inferred from 1 yr of coincident observation time with initial and advanced detectors, respectively.

V. CONCLUSIONS

GWs and HENs both carry information from the depth of their astrophysical source that is, to a large extent, complementary to the information carried by electromagnetic radiation. While the GW signature of cosmic events is characteristic of the dynamics of their central engine, a HEN flux is reflective of the hadronic outflow driven by the central engine. Detecting both messengers from a common source provides the unique opportunity to develop and fine-tune our understanding of the connection between the central engine, its surroundings, and the nature of the outflows.

Astrophysical targets of GW and HEN searches include gamma-ray bursts, soft-gamma repeaters, supernovae, and other intriguing transients. Such sources are often expected to be observable through electromagnetic messengers, such as gamma rays, x rays, optical, and radio waves. Some of these channels have already been used both in searches for GWs with the LIGO-GEO-Virgo interferometer network and in searches for HEN with the current neutrino telescopes ANTARES and IceCube. However, many of the emission models for these astrophysical objects have so far been indistinguishable by electromagnetic observations. The combination of two weakly interacting messengers, GWs and HENs, therefore provides a new and exciting opportunity for multimessenger searches with different challenges and outcomes from observations using electromagnetic counterparts.

Such a joint GW and HEN analysis program could significantly expand the scientific reach of both GW interferometers and HEN telescopes. The robust background rejection arising from the combination of two totally independent sets of data results in an increased sensitivity and the possible recovery of cosmic signals. The observation of coincident triggers provides strong evidence for the existence of common sources, some of which may have remained unobserved so far by conventional photon astronomy. Information on the progenitor, such as trigger time, direction, and expected frequency range, can also enhance our ability to identify GW signatures or astrophysical HENs with significance close to the noise floor of the detectors.

More generally, the joint (non)observation of HEN and GW signals in current and future detectors can provide important clues that address the fundamental questions about the nature and behavior of violent astrophysical sources (Marka, 2010): What are the engines that produce simultaneous high-energy neutrino and gravitational-wave emission? What is the population of GW and HEN emitters that are not detected via electromagnetic signals, and how (if at all) does this depend on GW or HEN emission? Are there any subpopulations? What are the earliest times of HEN emission compared to the onset of GW emission? When possible, the information obtained from a GW and HEN search is combined with electromagnetic observations in order to get a full, multimessenger picture of the astrophysical phenomena under investigation. Such an approach might for instance provide information on jet propagation in the vicinity of the central engine, therefore probing the progenitor structure (Bartos, Dasgupta, and Márka, 2012). Classifying the common progenitors of GWs, HENs, and gamma rays is an exciting opportunity. For instance, if there are subpopulations of GRBs that are efficient neutrino emitters, it will be interesting to identify the central engines behind these subpopulations using GWs. Observations might also enable us to confirm that gamma-ray and HEN beaming are similar or identical. Upon detection, the relative times of arrival or

relative flux of the different signals can indicate important properties of the central engine; on the other hand, the absence of coincident signals can constrain the joint parameter space of the source. In the promising case of GRBs, the outcome of a joint GW and HEN search could, e.g., improve our understanding of the details of astrophysical processes connecting the gravitational collapse or merger of compact objects to black-hole formation as well as to the formation of fireballs.

Several periods of concurrent observations with GW and HEN detectors have already taken place and the corresponding data are being scrutinized for coincident GW and HEN signals. Future schedules involving next-generation detectors with a significantly increased sensitivity (such as KM3NeT and the Advanced LIGO and Advanced Virgo projects) are likely to coincide as well. Studies are ongoing to explore the reach of current and planned experiments in constraining the population of multimessenger sources of GWs and HENs, with or without electromagnetic counterparts (Bartos *et al.*, 2011; Chassande-Mottin *et al.*, 2011). Constraints on the rate of GW and HEN transients can be derived using the independent observations already available from the current generation of detectors. On this basis, Bartos *et al.* (2011) estimated the reach of joint GW and HEN searches using advanced GW detectors and the completed IC86 detector, showing that searches undertaken by advanced detectors are indeed likely to be capable of detecting, constraining, or excluding several existing astrophysical models within one year of observation.

ACKNOWLEDGMENTS

The authors are indebted to many of their colleagues for frequent and fruitful discussions. In particular, they are grateful to hundreds of collaborators for making these large-scale experiments a reality. They also thank Alexa Staley, David Murphy, and Maggie Tse for their careful reading of the last version of the manuscript. The authors gratefully acknowledge support from the Argentinian CONICET (Grant No. PIP 0078/2010), Columbia University in the City of New York and the U.S. National Science Foundation under cooperative agreement No. PHY-0847182, the European Union No. FP7 (European Research Council Grant GRBs and Marie Curie European Reintegration Grant No. NEUTEL-APC 224898), the French Agence Nationale de la Recherche (No. ANR-08-JCJC-0061-01), the Israel-U.S. Binational Science Foundation, the Israel Science Foundation, the Joan and Robert Arnow Chair of Theoretical Astrophysics, the Spanish Ministerio de Educación y Ciencia (Grant No. AYA2010-21782-C03-01), the Swedish Research Council and the UK Science and Technology Facilities Council (STFC), Grants No. PP/F001096/1 and No. ST/I000887/1.

REFERENCES

- Aartsen, M. G., *et al.* (IceCube Collaboration), 2013, *Phys. Rev. Lett.* **111**, 021103.
- Abadie, J., *et al.* (LIGO Scientific Collaboration and Virgo Collaboration), 2010a, *Phys. Rev. D* **81**, 102001.
- Abadie, J., *et al.* (LIGO Scientific Collaboration and Virgo Collaboration), 2010b, *Classical Quantum Gravity* **27**, 173001.
- Abadie, J., *et al.* (LIGO Scientific Collaboration and Virgo Collaboration), 2010c, *Astrophys. J.* **715**, 1453.
- Abadie, J., *et al.* (LIGO Scientific Collaboration and Virgo Collaboration), 2010d, *Phys. Rev. D* **82**, 102001.
- Abadie, J., *et al.* (LIGO Scientific Collaboration and Virgo Collaboration), 2011a, *Astrophys. J. Lett.* **734**, L35.
- Abadie, J., *et al.* (Virgo Collaboration), 2011b, *Astrophys. J.* **734**, L35.
- Abadie, J., *et al.* (LIGO Scientific Collaboration), 2012a, *Astrophys. J.* **755**, 2.
- Abadie, J., *et al.* (LIGO Scientific Collaboration and Virgo Collaboration), 2012b, *Astron. Astrophys.* **539**, A124.
- Abadie, J., *et al.* (LIGO Scientific Collaboration and Virgo Collaboration), 2012c, *Phys. Rev. D* **85**, 122007.
- Abadie, J., *et al.* (LIGO Scientific Collaboration and Virgo Collaboration), 2012d, *Phys. Rev. D* **85**, 082002.
- Abadie, J., *et al.* (LIGO Scientific Collaboration and Virgo Collaboration), 2012e, [arXiv:1203.2674](https://arxiv.org/abs/1203.2674).
- Abbasi, R., *et al.* (IceCube Collaboration), 2009a, *Astrophys. J.* **701**, 1721.
- Abbasi, R., *et al.* (IceCube Collaboration), 2009b, *Phys. Rev. D* **79**, 062001.
- Abbasi, R., *et al.* (IceCube Collaboration), 2011a, *Phys. Rev. D* **84**, 082001.
- Abbasi, R., *et al.* (IceCube Collaboration) 2011b, *Astron. Astrophys.* **535**, A109.
- Abbasi, R., *et al.* (IceCube Collaboration), 2011c, *Phys. Rev. Lett.* **106**, 141101.
- Abbasi, R., *et al.* (IceCube Collaboration), 2011d, *Astrophys. J.* **732**, 18.
- Abbasi, R., *et al.* (IceCube Collaboration), 2012a, *Nature (London)* **484**, 351.
- Abbasi, R., *et al.* (IceCube Collaboration), 2012b, *Astrophys. J.* **745**, 45.
- Abbasi, R., *et al.* (IceCube Collaboration), 2012c, *Astrophys. J.* **748**, 118.
- Abbasi, R., *et al.* (IceCube Collaboration and ROTSE Collaboration), 2012d, *Astron. Astrophys.* **539**, A60.
- Abbasi, R., *et al.* (IceCube Collaboration), 2012e, *Astropart. Phys.* **35**, 615.
- Abbasi, R., *et al.* (IceCube Collaboration), 2012f, *Astrophys. J.* **744**, 1.
- Abbasi, R., *et al.* (IceCube Collaboration), 2013, *Nucl. Instrum. Methods Phys. Res., Sect. A* **700**, 188.
- Abbott, B. P., *et al.* (LIGO Scientific Collaboration), 2008, *Astrophys. J.* **681**, 1419.
- Abbott, B. P., *et al.* (LIGO Scientific Collaboration), 2009, *Rep. Prog. Phys.* **72**, 076901.
- Abbott, B. P., *et al.* (LIGO Scientific Collaboration and Virgo Collaboration), 2010, *Astrophys. J.* **715**, 1438.
- Accadia, T., *et al.* (Virgo Collaboration), 2012, *JINST* **7**, P03012.
- Acernese, F., *et al.* (Virgo Collaboration), 2007, *Classical Quantum Gravity* **24**, S617.
- Adrian-Martinez, S., *et al.* (ANTARES Collaboration), 2012a, *Astrophys. J.* **760**, 53.
- Adrian-Martinez, S., *et al.* (ANTARES Collaboration), 2012b, *Astropart. Phys.* **36**, 204.
- Adrian-Martinez, S., *et al.* (ANTARES Collaboration, LIGO Scientific Collaboration, and Virgo Collaboration), 2013, *J. Cosmol. Astropart. Phys.* **06**, 008.
- Adrian-Martinez, S., *et al.* (ANTARES Collaboration), 2013, *J. Cosmol. Astropart. Phys.* **03**, 006.
- Agatsuma, K., *et al.* (CLIO Collaboration), 2010, *Classical Quantum Gravity* **27**, 084022.

- Ageron, M., *et al.* (ANTARES Collaboration), 2011, *Nucl. Instrum. Methods Phys. Res., Sect. A* **656**, 11.
- Ageron, M., *et al.* (ANTARES Collaboration), 2012, *Astropart. Phys.* **35**, 530.
- Aguilar, J. A., *et al.* (ANTARES Collaboration), 2011, *Phys. Lett. B* **696**, 16.
- Allen, B., W.G. Anderson, P.R. Brady, D.A. Brown, and J.D.E. Creighton, 2012, *Phys. Rev. D* **85**, 122006.
- Alvarez-Muñiz, J., F. Halzen, and D.W. Hooper, 2000, *Phys. Rev. D* **62**, 093015.
- Ambrosio, M., *et al.* (MACRO Collaboration), 2001, *Astrophys. J.* **546**, 1038.
- Anchordoqui, L.A., and T. Montaruli, 2010, *Annu. Rev. Nucl. Part. Sci.* **60**, 129.
- Anderson, W.G., P.R. Brady, J.D.E. Creighton, and E.E. Flanagan, 2001, *Phys. Rev. D* **63**, 042003.
- Ando, S., and J.F. Beacom, 2005, *Phys. Rev. Lett.* **95**, 061103.
- Aptekar, R.L., T.L. Cline, D.D. Frederiks, S. V. Golenetskii, E.P. Mazets, and V.D. Pal'shin, 2009, *Astrophys. J. Lett.* **698**, L82.
- Aso, Y., Z. Márka, C. Finley, J. Dwyer, K. Kotake, and S. Márka, 2008, *Classical Quantum Gravity* **25**, 114039.
- Atwood, W.B., *et al.* (LAT Collaboration), 2009, *Astrophys. J.* **697**, 1071.
- Aynutdinov, V., *et al.*, 2011, *Nucl. Instrum. Methods Phys. Res., Sect. A* **628**, 115.
- Baret, B., and V. Van Elewyck, 2011, *Rep. Prog. Phys.* **74**, 046902.
- Baret, B., *et al.*, 2011, *Astropart. Phys.* **35**, 1.
- Baret, B., *et al.*, 2012, *Phys. Rev. D* **85**, 103004.
- Bartos, I., B. Dasgupta, and S. Márka, 2012, *Phys. Rev. D* **86**, 083007.
- Bartos, I., C. Finley, A. Corsi, and S. Márka, 2011, *Phys. Rev. Lett.* **107**, 251101.
- Bazin, G., *et al.*, 2009, *Astron. Astrophys.* **499**, 653.
- Becker, J.K., 2008, *Phys. Rep.* **458**, 173.
- Belczynski, K., T. Bulik, M. Dominik, and A. Prestwich, 2011, [arXiv:1106.0397](https://arxiv.org/abs/1106.0397).
- Blackburn, L., *et al.*, 2008, *Classical Quantum Gravity* **25**, 184004.
- Blanchet, L., 2002, *Living Rev. Relativity* **5**, 3.
- Bloom, J.S., D.A. Perley, H.W. Chen, N. Butler, J.X. Prochaska, D. Kocevski, C.H. Blake, A. Szentgyorgyi, E.E. Falco, and D.L. Starr, 2007, *Astrophys. J.* **654**, 878.
- Bromberg, O., E. Nakar, and T. Piran, 2011, *Astrophys. J. Lett.* **739**, L55.
- Bromberg, O., E. Nakar, T. Piran, and R. Sari, 2011, *Astrophys. J.* **740**, 100.
- Bromberg, O., E. Nakar, T. Piran, and R. Sari, 2012, *Astrophys. J.* **749**, 110.
- Buonanno, A., G.B. Cook, and F. Pretorius, 2007, *Phys. Rev. D* **75**, 124018.
- Burlon, D., G. Ghirlanda, G. Ghisellini, J. Greiner, and A. Celotti, 2009, *Astron. Astrophys.* **505**, 569.
- Campana, S., *et al.*, 2006, *Nature (London)* **442**, 1008.
- Cavalier, F., M. Barsuglia, M.-A. Bizouard, V. Brisson, A.-C. Clapson, M. Davier, P. Hello, S. Kreckelbergh, N. Leroy, and M. Varvella, 2006, *Phys. Rev. D* **74**, 082004.
- Chassande-Mottin, E., M. Hendry, P.J. Sutton, and S. Marka, 2011, *Gen. Relativ. Gravit.* **43**, 437.
- Chatterji, S., A. Lazzarini, L. Stein, P. Sutton, A. Searle, and M. Tinto, 2006, *Phys. Rev. D* **74**, 082005.
- Cheng, K.S., and G.E. Romero, 2004, Eds., *Cosmic Gamma-Ray Sources*, Astrophysics and Space Science Library (Kluwer Academic, Dordrecht, The Netherlands), Vol. 304.
- Chiarusi, T., and M. Spurio, 2010, *Eur. Phys. J. C* **65**, 649.
- Ciolfi, R., and L. Rezzolla, 2012, *Astrophys. J.* **760**, 1.
- Cline, T., D.D. Frederiks, S. Golenetskii, K. Hurley, C. Kouveliotou, E. Mazets, and J. van Paradijs, 2000, *Astrophys. J.* **531**, 407.
- Cobb, B.E., C.D. Bailyn, P.G. van Dokkum, and P. Natarajan, 2006, *Astrophys. J.* **645**, L113.
- Corsi, A., and P. Mészáros, 2009, *Astrophys. J.* **702**, 1171.
- Corsi, A., and B.J. Owen, 2011, *Phys. Rev. D* **83**, 104014.
- Costa, E., *et al.*, 1997, *Nature (London)* **387**, 783.
- Coward, D.M., 2005, *Mon. Not. R. Astron. Soc.* **360**, L77.
- Daigne, F., and R. Mochkovitch, 2007, *Astron. Astrophys.* **465**, 1.
- Davies, M.B., A. King, S. Rosswog, and G. Wynn, 2002, *Astrophys. J.* **579**, L63.
- Davies, M.B., A.J. Levan, and A.R. King, 2005, *Mon. Not. R. Astron. Soc.* **356**, 54.
- de Freitas Pacheco, J.A., 1998, *Astron. Astrophys.* **336**, 397 [<http://adsabs.harvard.edu/abs/1998A&A...336.397D00>].
- de Freitas Pacheco, J.A., T. Regimbau, S. Vincent, and A. Spallicci, 2006, *Int. J. Mod. Phys. D* **15**, 235.
- Dermer, C.D., and A. Atoyan, 2003, *Phys. Rev. Lett.* **91**, 071102.
- Duncan, R.C., and C. Thompson, 1992, *Astrophys. J.* **392**, L9.
- Eichler, D., 1994, *Astrophys. J. Suppl. Ser.* **90**, 877.
- Eichler, D., 2002, *Mon. Not. R. Astron. Soc.* **335**, 883.
- Eichler, D., D. Guetta, and M. Pohl, 2010, *Astrophys. J.* **722**, 543.
- Eichler, D., and A. Levinson, 1999, *Astrophys. J. Lett.* **521**, L117.
- Eichler, D., M. Livio, T. Piran, and D.N. Schramm, 1989, *Nature (London)* **340**, 126.
- Etienne, Z.B., Y.T. Liu, S.L. Shapiro, and T.W. Baumgarte, 2009, *Phys. Rev. D* **79**, 044024.
- Faber, J.A., T.W. Baumgarte, S.L. Shapiro, K. Taniguchi, and F.A. Rasio, 2006, *AIP Conf. Proc.* **861**, 622.
- Fairhurst, S., 2009, *New J. Phys.* **11**, 123006.
- Flanagan, É. É., and S.A. Hughes, 1998, *Phys. Rev. D* **57**, 4566.
- Franckowiak, A., *et al.* (IceCube and ROTSE Collaborations), 2009, [arXiv:0909.0631](https://arxiv.org/abs/0909.0631).
- Fryer, C.L., D.E. Holz, and S.A. Hughes, 2002, *Astrophys. J.* **565**, 430.
- Fryer, C.L., and S.E. Woosley, 1998, *Astrophys. J. Lett.* **502**, L9.
- Galama, T.J., *et al.*, 1998, *Nature (London)* **395**, 670.
- Gehrels, N., *et al.*, 2004, *Astrophys. J.* **611**, 1005.
- Gögüş, E., *et al.*, 2010, *Astrophys. J.* **718**, 331.
- Granot, J., and E. Ramirez-Ruiz, 2004, *Astrophys. J.* **609**, L9.
- Grote, H. (LIGO Scientific Collaboration), 2010, *Classical Quantum Gravity* **27**, 084003.
- Gualtieri, L., J.A. Pons, and G. Miniutti, 2004, *Phys. Rev. D* **70**, 084009.
- Guersel, Y., and M. Tinto, 1989, *Phys. Rev. D* **40**, 3884.
- Guetta, D., and M. Della Valle, 2007, *Astrophys. J. Lett.* **657**, L73.
- Guetta, D., and J. Granot, 2003, *Phys. Rev. Lett.* **90**, 201103.
- Guetta, D., D. Hooper, J. Alvarez-Muñiz, F. Halzen, and E. Reuveni, 2004, *Astropart. Phys.* **20**, 429.
- Gupta, N., and B. Zhang, 2007, *Astropart. Phys.* **27**, 386.
- Halzen, F., and S.R. Klein, 2010, *Rev. Sci. Instrum.* **81**, 081101.
- Halzen, F., and G.G. Raffelt, 2009, *Phys. Rev. D* **80**, 087301.
- Halzen, F., *et al.*, 2005, [arXiv:astro-ph/0503348](https://arxiv.org/abs/astro-ph/0503348).
- Harry, G.M. (LIGO Scientific Collaboration), 2010, *Classical Quantum Gravity* **27**, 084006.
- Harry, I., and S. Fairhurst, 2011, *Classical Quantum Gravity* **28**, 134008.
- Hayakawa, S., 1952, *Prog. Theor. Phys.* **8**, 571.
- Horiuchi, S., and S. Ando, 2008, *Phys. Rev. D* **77**, 063007.
- Hummer, S., P. Baerwald, and W. Winter, 2012, *Phys. Rev. Lett.* **108**, 231101.

- Hurley, K., 2010, *Mem. Soc. Astron. Ital.* **81**, 432 [http://sprg.ssl.berkeley.edu/adminstuff/webpubs/2010_msai_432.pdf].
- Hurley, K., *et al.*, 1999a, *Nature (London)* **397**, 41.
- Hurley, K., C. Kouveliotou, P. Woods, E. Mazets, S. Golenetskii, D. D. Frederiks, T. Cline, and J. van Paradijs, 1999b, *Astrophys. J. Lett.* **519**, L143.
- Hutchinson, G. W., 1952, *Philos. Mag.* **43**, 847 [http://www.tandfonline.com/doi/pdf/10.1080/14786440808520232#UjDuwLyac_c].
- Ioka, K., 2001, *Mon. Not. R. Astron. Soc.* **327**, 639.
- Ioka, K., S. Razzaque, S. Kobayashi, and P. Mészáros, 2005, *Astrophys. J.* **633**, 1013.
- Kalogera, V., *et al.*, 2004, *Astrophys. J.* **601**, L179.
- Kaneko, Y., *et al.*, 2010, *Astrophys. J.* **710**, 1335.
- Kashiyama, K., and K. Ioka, 2011, *Phys. Rev. D* **83**, 081302.
- Katz, B., R. Budnik, and E. Waxman, 2010, *Astrophys. J.* **716**, 781.
- Katz, U., and C. Spiering, 2012, *Prog. Part. Nucl. Phys.* **67**, 651.
- Klimenko, S., I. Yakushin, A. Mercer, and G. Mitselmakher, 2008, *Classical Quantum Gravity* **25**, 114029.
- Kobayashi, S., and P. Mészáros, 2003, *Astrophys. J.* **589**, 861.
- Kochanek, C. S., and T. Piran, 1993, *Astrophys. J.* **417**, L17.
- Koers, H. B. J., and R. A. M. J. Wijers, 2007, [arXiv:0711.4791](https://arxiv.org/abs/0711.4791).
- Kooijman, P. (KM3NeT Consortium) 2013, *Nucl. Instrum. Methods Phys. Res., Sect. A* **725**, 13.
- Kotake, K., K. Sato, and K. Takahashi, 2006, *Rep. Prog. Phys.* **69**, 971.
- Kotake, K., K. Sumiyoshi, S. Yamada, T. Takiwaki, T. Kuroda, Y. Suwa, and H. Nagakura, 2012, *Prog. Theor. Exp. Phys.* **2012**, 01A301.
- Kotake, K., T. Takiwaki, and S. Harikae, 2012, *Astrophys. J.* **755**, 84.
- Kowarik, T., *et al.* (IceCube Collaboration), 2009, [arXiv:0908.0441](https://arxiv.org/abs/0908.0441).
- Kulkarni, S. R., D. A. Frail, M. H. Wieringa, R. D. Ekers, E. M. Sadler, R. M. Wark, J. L. Higdon, E. S. Phinney, and J. S. Bloom, 1998, *Nature (London)* **395**, 663.
- Kulkarni, S. R., D. L. Kaplan, H. L. Marshall, D. A. Frail, T. Murakami, and D. Yonetoku, 2003, *Astrophys. J.* **585**, 948.
- Kuroda, K. (LCGT Collaboration), 2010, *Classical Quantum Gravity* **27**, 084004.
- Kuroda, T., K. Kotake, and T. Takiwaki, 2012, *Astrophys. J.* **755**, 11.
- Lasky, P. D., B. Zink, and K. D. Kokkotas, 2012, [arXiv:1203.3590](https://arxiv.org/abs/1203.3590).
- Lee, W. H., and E. Ramirez-Ruiz, 2007, *New J. Phys.* **9**, 17.
- Levin, Y., and M. van Hoven, 2011, *Mon. Not. R. Astron. Soc.* **418**, 659.
- Levinson, A., and O. Bromberg, 2008, *Phys. Rev. Lett.* **100**, 131101.
- Levinson, A., and D. Eichler, 1993, *Astrophys. J.* **418**, 386.
- Levinson, A., and D. Eichler, 2003, *Astrophys. J.* **594**, L19.
- Levinson, A., E. Ofek, E. Waxman, and A. Gal-Yam, 2002, *Astrophys. J.* **576**, 923.
- Li, L.-X., and B. Paczynski, 1998, *Astrophys. J.* **507**, L59.
- Li, Z., 2012, *Phys. Rev. D* **85**, 027301.
- Liang, E., B. Zhang, F. Virgili, and Z. G. Dai, 2007, *Astrophys. J.* **662**, 1111.
- Lindblom, L., and S. L. Detweiler, 1983, *Astrophys. J. Suppl. Ser.* **53**, 73.
- MacFadyen, A. I., S. E. Woosley, and A. Heger, 2001, *Astrophys. J.* **550**, 410.
- Malesani, D., *et al.*, 2004, *Astrophys. J. Lett.* **609**, L5.
- Mandal, S., and D. Eichler, 2010, *Astrophys. J.* **713**, L55.
- Marka, S. (LIGO and Virgo Scientific Collaborations), 2010, *J. Phys. Conf. Ser.* **243**, 012001.
- Márka, S. (LIGO Scientific Collaboration and Virgo Collaboration), 2011, *Classical Quantum Gravity* **28**, 114013.
- Markov, M., and I. Zheleznykh, 1961, *Nucl. Phys.* **27**, 385.
- M. A. Markov, 1960, in *Proceedings of the 1960 Annual International Conference on High Energy Physics at Rochester*, edited by E. C. G. Sudarshan, J. H. Tinlot, and A. C. Melissinos (University of Rochester).
- Markowitz, J., M. Zanolin, L. Cadonati, and E. Katsavounidis, 2008, *Phys. Rev. D* **78**, 122003.
- Mazzali, P. A., *et al.*, 2005, *Science* **308**, 1284.
- Mazzali, P. A., J. Deng, K. Nomoto, D. N. Sauer, E. Pian, N. Tominaga, M. Tanaka, K. Maeda, and A. V. Filippenko, 2006, *Nature (London)* **442**, 1018.
- Mereghetti, S., 2008, *Astron. Astrophys. Rev.* **15**, 225.
- Mészáros, P., and M. J. Rees, 1993, *Astrophys. J.* **405**, 278.
- Mészáros, P., and E. Waxman, 2001, *Phys. Rev. Lett.* **87**, 171102.
- Mohanty, S. D., M. Rakhmanov, S. Klimenko, and G. Mitselmakher, 2006, *Classical Quantum Gravity* **23**, 4799.
- Morrison, P., 1958, *Nuovo Cimento* **7**, 858.
- Muller, B., H.-T. Janka, and A. Marek, 2012, *Astrophys. J.* **756**, 84.
- Murase, K., K. Ioka, S. Nagataki, and T. Nakamura, 2006, *Astrophys. J.* **651**, L5.
- Murase, K., and S. Nagataki, 2006, *Phys. Rev. Lett.* **97**, 051101.
- Nakar, E., 2007, *Phys. Rep.* **442**, 166.
- Nakar, E., and T. Piran, 2003, *New Astron.* **8**, 141.
- Nakar, E., and T. Piran, 2011, *Nature (London)* **478**, 82.
- Nakar, E., and R. Sari, 2012, *Astrophys. J.* **747**, 88.
- O'Shaughnessy, R., V. Kalogera, and K. Belczynski, 2010, *Astrophys. J.* **716**, 615.
- Ott, C., E. Abdikamalov, E. O'Connor, C. Reisswig, R. Haas, P. Kalmus, S. Drasco, A. Burrows, and E. Schnetter, 2012, *Phys. Rev. D* **86**, 024026.
- Ott, C. D., 2009, *Classical Quantum Gravity* **26**, 063001.
- Ott, C. D., C. Reisswig, E. Schnetter, E. O'Connor, U. Sperhake, F. Löffler, P. Diener, E. Abdikamalov, I. Hawke, and A. Burrows, 2011, *Phys. Rev. Lett.* **106**, 161103.
- Paciesas, W. S., *et al.*, 1999, *Astrophys. J. Suppl. Ser.* **122**, 465.
- Paczynski, B., and G. Xu, 1994, *Astrophys. J.* **427**, 708.
- Palmer, D. M., *et al.*, 2005, *Nature (London)* **434**, 1107.
- Paredes, J. M., O. Reimer, and D. Torres, 2007, Eds., *The Multimessenger Approach to High Energy Gamma-ray Sources*, Astrophysics and Space Science Library (Kluwer Academic, Dordrecht, The Netherlands), Vol. 309.
- Phinney, E. S., 1991, *Astrophys. J. Lett.* **380**, L17.
- Pian, E., *et al.*, 2006, *Nature (London)* **442**, 1011.
- Piran, T., 2005, *Rev. Mod. Phys.* **76**, 1143.
- Piran, T., 2002, in *Proceedings of the 16th International Conference on General Relativity and Gravitation, Durban, South Africa*, edited by N. T. Bishop and S. D. Maharai (World Scientific, Singapore) [[arXiv:gr-qc/0205045](https://arxiv.org/abs/gr-qc/0205045)].
- Piro, A. L., and C. D. Ott, 2011, *Astrophys. J.* **736**, 108.
- Piro, A. L., and E. Pfahl, 2007, *Astrophys. J.* **658**, 1173.
- Pradier, T., 2009, *Nucl. Instrum. Methods Phys. Res., Sect. A* **602**, 268.
- Rachen, J. P., and P. Mészáros, 1998, *Phys. Rev. D* **58**, 123005.
- Rakhmanov, M., 2006, *Classical Quantum Gravity* **23**, S673.
- Rapidis, P. A. (NESTOR Collaboration), 2009, *Nucl. Instrum. Methods Phys. Res., Sect. A* **602**, 54.
- Razzaque, S., P. Mészáros, and E. Waxman, 2003a, *Phys. Rev. Lett.* **90**, 241103.
- Razzaque, S., P. Mészáros, and E. Waxman, 2003b, *Phys. Rev. D* **68**, 083001.
- Razzaque, S., P. Mészáros, and E. Waxman, 2004, *Phys. Rev. Lett.* **93**, 181101.
- Romero, G. E., M. M. Reynoso, and H. R. Christiansen, 2010, *Astron. Astrophys.* **524**, A4.

- Sathyaprakash, B., and B. F. Schutz, 2009, *Living Rev. Relativity* **12**, 2.
- Searle, A. C., P. J. Sutton, and M. Tinto, 2009, *Classical Quantum Gravity* **26**, 155017.
- Searle, A. C., P. J. Sutton, M. Tinto, and G. Woan, 2008, *Classical Quantum Gravity* **25**, 114038.
- Shibata, M., and K. Taniguchi, 2008, *Phys. Rev. D* **77**, 084015.
- Soderberg, A. M., D. A. Frail, and M. H. Wieringa, 2004, *Astrophys. J.* **607**, L13.
- Soderberg, A. M., *et al.*, 2004, *Nature (London)* **430**, 648.
- Soderberg, A. M., *et al.*, 2006, *Nature (London)* **442**, 1014.
- Soderberg, A. M., *et al.*, 2010, *Nature (London)* **463**, 513.
- Summerscales, T. Z., A. Burrows, L. S. Finn, and C. D. Ott, 2008, *Astrophys. J.* **678**, 1142.
- Sun, M.-Y., T. Liu, W.-M. Gu, and J.-F. Lu, 2012, *Astrophys. J.* **752**, 31.
- Sutton, P. J., G. Jones, S. Chatterji, P. Kalmus, I. Leonor, S. Poprocki, J. Rollins, A. Searle, L. Stein, M. Tinto, and M. Was, 2010, *New J. Phys.* **12**, 053034.
- Taiuti, M. (NEMO Collaboration), 2011, *Nucl. Instrum. Methods Phys. Res., Sect. A* **626–627**, S25.
- Tan, J. C., C. D. Matzner, and C. F. McKee, 2001, *Astrophys. J.* **551**, 946.
- Thompson, C., and R. C. Duncan, 1995, *Mon. Not. R. Astron. Soc.* **275**, 255.
- Thompson, C., and R. C. Duncan, 1996, *Astrophys. J.* **473**, 322.
- Thrane, E., *et al.*, 2011, *Phys. Rev. D* **83**, 083004.
- Thrane, E., *et al.* (Super-Kamiokande Collaboration), 2009, *Astrophys. J.* **704**, 503.
- Usov, V. V., 1992, *Nature (London)* **357**, 472.
- van der Horst, A. J., *et al.*, 2010, *Astrophys. J. Lett.* **711**, L1.
- Van Elewyck, V. (ANTARES Collaboration), 2011, *Nucl. Instrum. Methods Phys. Res., Sect. A* **626–627**, S180.
- Vietri, M., 1995, *Astrophys. J.* **453**, 883.
- Wang, X.-Y., Z. Li, E. Waxman, and P. Mészáros, 2007, *Astrophys. J.* **664**, 1026.
- Wang, X.-Y., S. Razzaque, P. Mészáros, and Z.-G. Dai, 2007, *Phys. Rev. D* **76**, 083009.
- Waxman, E., 1995, *Phys. Rev. Lett.* **75**, 386.
- Waxman, E., 2010, [arXiv:1010.5007](https://arxiv.org/abs/1010.5007).
- Waxman, E., and J. N. Bahcall, 1997, *Phys. Rev. Lett.* **78**, 2292.
- Waxman, E., and J. N. Bahcall, 2000, *Astrophys. J.* **541**, 707.
- Waxman, E., P. Mészáros, and S. Campana, 2007, *Astrophys. J.* **667**, 351.
- Wen, L., and Y. Chen, 2010, *Phys. Rev. D* **81**, 082001.
- Wen, L., X. Fan, and Y. Chen, 2008, *J. Phys. Conf. Ser.* **122**, 012038.
- Wen, L., and B. F. Schutz, 2005, *Classical Quantum Gravity* **22**, S1321.
- White, D. J., E. J. Daw, and V. S. Dhillon, 2011, *Classical Quantum Gravity* **28**, 085016.
- Woosley, S. E., and J. S. Bloom, 2006, *Annu. Rev. Astron. Astrophys.* **44**, 507.
- Woosley, S. E., and A. I. MacFadyen, 1999, *Astron. Astrophys. Suppl. Ser.* **138**, 499.
- Zink, B., P. D. Lasky, and K. D. Kokkotas, 2012, *Phys. Rev. D* **85**, 024030.