



## UvA-DARE (Digital Academic Repository)

### On the trail of innate immune responses: Plasmacytoid dendritic cells and beyond

Balzarolo, M.

**Publication date**  
2013

[Link to publication](#)

#### **Citation for published version (APA):**

Balzarolo, M. (2013). *On the trail of innate immune responses: Plasmacytoid dendritic cells and beyond*.

#### **General rights**

It is not permitted to download or to forward/distribute the text or part of it without the consent of the author(s) and/or copyright holder(s), other than for strictly personal, individual use, unless the work is under an open content license (like Creative Commons).

#### **Disclaimer/Complaints regulations**

If you believe that digital publication of certain material infringes any of your rights or (privacy) interests, please let the Library know, stating your reasons. In case of a legitimate complaint, the Library will make the material inaccessible and/or remove it from the website. Please Ask the Library: <https://uba.uva.nl/en/contact>, or a letter to: Library of the University of Amsterdam, Secretariat, Singel 425, 1012 WP Amsterdam, The Netherlands. You will be contacted as soon as possible.

# 2

## CHAPTER

### **The transcription factor Spi-B regulates human plasmacytoid dendritic cell survival through direct induction of the anti-apoptotic gene BCL2-A1**

J.J. Karrich<sup>1</sup>, M. Balzarolo<sup>2,3</sup>, H. Schmidlin<sup>1</sup>, M. Libouban<sup>1</sup>, M. Nagasawa<sup>1</sup>, R. Gentek<sup>1</sup>, S. Kamihira<sup>4</sup>, T. Maeda<sup>5</sup>, D. Amsen<sup>1</sup>, M. C. Wolkers<sup>2,3</sup>, B. Blom<sup>1</sup>

<sup>1</sup> Department of Cell Biology and Histology, Academic Medical Center, University of Amsterdam, Amsterdam, The Netherlands;

<sup>2</sup> Laboratory for Experimental Oncology and Radiobiology (LEXOR), Center for Experimental Molecular Medicine, Academic Medical Center, University of Amsterdam, Amsterdam, The Netherlands;

<sup>3</sup> Department of Hematopoiesis, Sanquin Research-AMC Landsteiner laboratory, Amsterdam, The Netherlands;

<sup>4</sup> Department of Laboratory Medicine, Nagasaki University, Graduate School of Biomedical Sciences, Nagasaki, Japan;

<sup>5</sup> Department of Island and Community Medicine, Island Medical Research Institute, Nagasaki University, Graduate School of Biomedical Science, Nagasaki, Japan.

*Blood* 2012 May; 119(22): 5191-200

## **Abstract**

Plasmacytoid dendritic cells (pDCs) selectively express Toll-like receptor (TLR)-7 and TLR-9, which allow them to rapidly secrete massive amounts of type I interferons (IFNs) after sensing nucleic acids derived from viruses or bacteria. It remains incompletely understood how development and function of pDCs is controlled at the transcriptional level. One of the main factors driving pDC development is the ETS factor Spi-B, but little is known about its target genes. Here we demonstrate that Spi-B is crucial for the differentiation of hematopoietic progenitor cells into pDCs by controlling survival of pDCs and its progenitors. In search for Spi-B target genes, we identified the anti-apoptotic gene Bcl2-A1 as a specific and direct target gene, thereby consolidating the critical role of Spi-B in cell survival.

## 1. Introduction

Plasmacytoid dendritic cells (pDCs) form a unique subset within the DC lineage. In contrast to conventional (c)DCs, pDCs express Toll-like-receptor (TLR)-7 and TLR-9, which recognize viral and microbial single-stranded RNA or double-stranded DNA, respectively (reviewed in Liu (1)). TLR activation in pDCs leads to rapid secretion of high amounts of type I interferons (IFNs), which initiate antiviral immune responses. In addition, pDCs mature in response to autocrine production of pro-inflammatory cytokines such as interleukin-6 (IL-6) and TNF- $\alpha$ . Collectively, this contributes to activation of T, B and NK cells (reviewed in Lande and Gilliet (2)). PDCs originate from hematopoietic progenitor cells (HPCs) in the bone marrow, but can also develop in the thymus (3). While both myeloid and lymphoid precursors give rise to pDCs, myeloid derivation is predominant (reviewed by Naik (4)) and depends on Fms-like kinase 3 ligand (Flt3L) (5). The ETS family member Spi-B is required for pDC development, since both *in vitro* and *in vivo* human HPCs failed to give rise to pDCs when inhibiting Spi-B expression (6). Spi-B shares with other ETS members a conserved ETS domain that mediates DNA binding (7). Spi-B is a hematopoietic cell-specific transcription factor (8) and is expressed, in addition to pDCs, in CD34<sup>+</sup> HPCs (9), pro-T cells (10), and mature B cells (9). Spi-B potently regulates lineage commitment during human hematopoiesis as its overexpression in HPCs blocks T, B, and NK cells development, but promotes pDC development(6). Despite the importance of Spi-B in development of immune cells, little is known about its direct target genes. In mice, Spi-B may act by indirectly promoting the activity of the E-protein E2-2, which both in human and mouse is critical for pDC development (11,12). In human B cells, ectopic expression of Spi-B blocked memory B cell differentiation into antibody secreting cells by direct transcriptional repression of the PRDM1 and XBP1 genes (13).

PDCs are fragile cells that when cultured *in vitro* rapidly undergo apoptosis, which can be counteracted by stimulation with TLR-7/9 agonists or cytokines, including IL-3, GM-CSF or IFN- $\alpha$  (14). Apoptosis is a highly regulated process that serves to remove superfluous, damaged or infected cells and therefore to maintain cellular homeostasis (reviewed by Elmore (15)). Apoptosis and cell survival are intimately linked, since their regulation is based on the balance between pro-apoptotic and anti-apoptotic (survival) regulators. Members of the Bcl-2 family regulate the intrinsic pathway of apoptosis through control of the outer mitochondrial membrane (OMM) integrity. Pro-apoptotic members such as Bak, Bax, Bim, and Noxa share a so-called Bcl-2 homology domain, which promote OMM permeability leading to the release of Cytochrome C in the cytoplasm and apoptosis induction. Anti-apoptotic members, including Bcl-2, Bcl-xL, Bcl-w, Bcl2-A1 and Mcl-1, promote cell survival through counteracting pro-apoptotic Bcl-2 member activity.

Bcl2-A1 is a hematopoietic specific protein and protects cells from apoptosis induced by a variety of apoptotic stimuli such as death-receptor ligation (16), p53 overexpression (17), and DNA-damaging agents (18). In mice, Bcl2-A1 is expressed in a variety of hematopoietic cell lineages, including T-helper lymphocytes, macrophages, and neutrophils (19). In humans, Bcl2-A1 is expressed in various types of hematopoietic cells in the bone marrow and fetal liver, and in germinal centres of peripheral lymphoid organs (20). The BCL2-A1 gene is induced in response to granulocyte-macrophage-colony-stimulating-factor (GM-CSF) (21) and a direct transcriptional target of NF- $\kappa$ B in response to inflammatory mediators (22-24).

To investigate whether Spi-B has a role in regulating pDC survival and/or proliferation, we set out to use the leukemic pDC cell line CAL-1 (25) as a model to study gene regulation in pDCs. We have studied the gene expression profile of this cell line under conditions of overexpression and inhibition of Spi-B. Using this approach, we identified Bcl2-A1 as a direct target of Spi-B. We validated and confirmed our findings in primary pDCs, which underlined the role of Spi-B in pDC development and survival through regulation of the anti-apoptotic gene BCL2-A1.

## **2. Materials and methods**

### **2.1. Cell lines**

The pDC cell line CAL-1 (25) were cultured in RPMI-1640 medium (Invitrogen) supplemented with 8% FCS, and maintained at 37°C, 5% CO<sub>2</sub>.

### **2.2. Reagents**

Cells were activated with 10 ng/mL IL-3 (R&D Systems) in the presence of CD40 ligand-transfected L cells (10,000/well, irradiated at 7,000 rads) in RPMI-1640 medium (Invitrogen), 8% FCS. CpG-A (ODN2216), CpG-B (ODN2006) and R848 were purchased from Invivogen. HSV-1 (KOS strain; attenuated by  $\gamma$  irradiation; gift from R. Chase, Schering-Plough, Kenilworth, NJ) was added at 10 PFU/cell.

### **2.3. Isolation of CD34<sup>+</sup> cells from fetal liver**

Human fetal livers (FL) were obtained from elective abortions. Gestational age was determined by ultrasonic measurement of the skull diameter and ranged from 14 to 20 weeks. The use of fetal tissue was approved by the Medical Ethical Committee of the Academic Medical Center and was contingent on obtaining informed consent, in accordance with the Declaration of Helsinki. For purification of CD34<sup>+</sup> cells, FL cells were isolated from a Ficoll-Hypaque density gradient (Lymphoprep; Nycomed Pharma,

Oslo, Norway). Subsequently, CD34<sup>+</sup> cells were enriched by immunomagnetic cell sorting, using a CD34<sup>+</sup> separation kit (Miltenyi Biotec, Bergisch, Gladbach, Germany). CD34<sup>+</sup>CD38<sup>-</sup> FL hematopoietic progenitors were sorted to purity using a FACSAria flowcytometer (BD Biosciences) after labeling with fluorescent conjugated antibodies. Purity was  $\geq 99\%$  and confirmed by reanalysis of sorted cells.

## 2.4. Isolation of primary human pDC from thymus

Postnatal thymic (PNT) tissue was obtained from surgical specimens removed from children up to 3 years of age undergoing open-heart surgery (LUMC, Leiden, The Netherlands), approved by the Medical Ethical Committee of the Academic Medical Center and in accordance with the Declaration of Helsinki. Thymocytes were isolated from a Ficoll-Hypaque density gradient. Subsequently, BDCA4<sup>+</sup> cells were enriched by immunomagnetic bead selection using a BDCA4-cell separation kit (Miltenyi Biotec). CD123<sup>+</sup>CD45RA<sup>+</sup> pDCs were sorted by flow cytometry on a FACSAria (BD Biosciences) after labeling with fluorescent conjugated antibodies.

## 2.5. Flow cytometry

FL progenitor cells were sorted using CD34-PE, CD38-PE-Cy7, and lineage markers-APC (CD3, CD14, CD19, CD56) (BD Bioscience), BDCA2 (Miltenyi Biotech)). Thymic progenitor cells were sorted using CD34-PE-Cy7 and CD1a-PE (BD Bioscience). For analysis, single cell suspensions were stained with FITC, PE, PE-Cy7, APC or APC-Cy7 coupled anti-human monoclonal antibodies targeting the following cell surface markers: CCR7, CD40, CD45RA, CD56, CD62L, CD80, CD86, CD123, HLA-DR (BD Bioscience), and BDCA2 (Miltenyi Biotech). Samples were analyzed on a LSRII (BD Bioscience) and analyzed using FlowJo software (TreeStar). Cell proliferation was assessed using the CellTrace-violet proliferation kit (Invitrogen) according to the manufacturer's instructions. For apoptosis staining we used Annexin-PE (BD Bioscience) and 7-AAD viability staining solution (Ebioscience).

## 2.6. Retroviral and lentiviral constructs and transductions

For overexpression of Spi-B we used either the retroviral construct pLZRS-SpiB-IRES-green fluorescent protein (GFP) or pLZRS-SpiB-ER-IRES-GFP (26).  $\Delta$ EtS and  $\Delta$ TAD truncated version of Spi-B were generated as previously described (13). To knockdown Spi-B in CAL-1 cells, Spi-B short hairpin (sh)RNA was cloned from a retroviral backbone (6) into a lentiviral backbone (pTRIP-H1-Spi-B shRNA/EF1 $\alpha$ -GFP). For virus production, constructs were transfected into the Phoenix-GalV packaging cells (retroviral) or 293T cells (lentiviral) (26,27). Control cells were transduced with empty pLZRS-IRES-GFP constructs or pTRIP expressing an irrelevant shRNA targeting Renilla mRNA

(pTRIP-H1-Renilla shRNA/EF1 $\alpha$ -GFP) (6). For transduction of CAL-1 cells, 10<sup>6</sup> cells were transferred to plates coated with retronectin (30  $\mu$ g/mL, Takara, Kyoto, Japan) and incubated with virus supernatants for 6 hours. To induce nuclear translocation of ER tagged Spi-B, cells were treated with 0.5  $\mu$ M 4-hydroxytamoxifen (4HT; Sigma-Aldrich, St Louis, MO, USA). *De novo* protein translation was inhibited by pre-incubation with 2.8  $\mu$ g/mL cycloheximide (CHX; Sigma-Aldrich). For Bcl2-A1 knock-down experiments, shRNAs specifically targeting the Bcl2-A1 mRNA were designed using Ambion's siRNA Target Finder (<http://www.ambion.com>) and subcloned into pRETRO-pgk-GFP (6).

### 2.7. PCR

Total RNA was extracted using Trizol reagent (Invitrogen). RNA concentration and quality was determined using the Nanodrop spectrophotometer. Equal amounts of total RNA were reverse transcribed into cDNA with first strand buffer, superscript II reverse transcriptase (Invitrogen), dNTPs (Roche) and Oligo (dT) (Promega), or using the RNA-to-cDNA kit (Roche). cDNA was amplified using a PCR machine for conventional RT-PCR and separated on a 1.5% agarose gel, or amplified using an iCycler and SYBR green supermix (BioRad) for quantitative PCR (QPCR) using specific primer sets (Supplemental Table 1). Each sample was analyzed in triplicates and expression levels were normalized to the three housekeeping genes HPRT, GAPDH and 18S RNA.

### 2.8. Chromatin Immunoprecipitation assay

SpiB~ER-GFP<sup>+</sup> cells (1x10<sup>7</sup>) were incubated with or without 4HT for 4 hours. Chromatin immunoprecipitation (ChIP) was performed according to an adapted version of the Upstate ChIP kit protocol (Upstate Biotechnology, Charlottesville, VA) with either 3  $\mu$ g polyclonal anti-ER antibody (Santa Cruz Biotechnology) or 3  $\mu$ g normal rabbit IgG (Invitrogen). Precipitated chromatin was purified with a PCR purification kit (Qiagen) and analyzed by QPCR using 5 different primer sets, each of them specific for a different DNA sequence located within the BCL2-A1 promoter region up to 3.2 Kb upstream of the transcription start (PR1-PR5, Supplemental Table 1). As a positive control, the CD40 promoter was amplified by QPCR using the primer set PR+.

### 2.9. Luciferase reporter assays

Reporter constructs were generated using PCR to amplify a 3.2 Kb DNA fragment containing the conserved human Bcl2-A1 promoter region (full length) and a truncated version of the Bcl2-A1 promoter region ( $\Delta$ 5') (Fig. 4C). Amplified PCR fragments were cloned into the pCR2-1TOPO TA vector (Invitrogen). Sequencing with the primer sets used for ChIP assays was performed using an ABI sequencer (Perkin Elmer) with the dye-terminator cycle-sequencing kit (Perkin Elmer). The inserts were subcloned into pGL3

basic vector (Promega) using XhoI-HindIII restriction sites. Cotransfection of one of the reporter constructs, the constitutive active Renilla reniformis luciferase-producing vector prL-CMV (Promega), and pLZRS expressing different variants of Spi-B, or PU.1 as a positive control, in 293T cells was done with the Fugene transfection reagent (Roche). Detection of firefly and R. reniformis luciferase was done using the Dual Luciferase assay kit (Promega) on a Synergy HT microplate reader (Biotek).

## 2.10. Cytometric Bead Array analysis and ELISA

CAL-1 cells were stimulated for 6 hours with CpG-B (ODN2006) (12.5 µg/ml) or R848 (10 µg/ml). Cell-free supernatants were collected and analyzed for cytokine content using the Cytometric Bead Array (CBA), according to the manufacturer's protocol (CBA Human Inflammation Kit, BD Biosciences). Quantification of IFN-β levels in supernatants was done using an ELISA kit (PBL Interferon source, NJ, USA) according to the manufacturer's instructions.

## 2.11. *In vivo* growth assay

Briefly,  $0.25 \times 10^6$  CAL-1 cells transduced with Spi-B shRNA/EF1α-GFP or Renilla shRNA/EF1α-GFP control were subcutaneously injected into the right and left flank of RAG-2<sup>-/-</sup>γc<sup>-/-</sup> mice (28). To mimic a tumor like growth, cells were mixed with collagen (Matrigel, Invitrogen) prior to injection. Twenty days after engraftment mice were sacrificed and tumors isolated. Cells were counted and the percentage of GFP<sup>+</sup> cells was analyzed by flowcytometry. Different organs of the mice were analyzed (blood, spleen, liver) for the presence of GFP<sup>+</sup> cells.

## 2.12. *In vitro* differentiation assay

Sorted CD34<sup>+</sup>CD38<sup>-</sup> HPC from FL were transduced as described previously (26). Briefly, transduced progenitors were cultured on a layer of mouse OP9 stromal cells in the presence of 5 ng/ml Flt3L and 5 ng/ml IL-7 (PeproTech). *In vitro* generated GFP<sup>+</sup>CD123<sup>hi</sup>BDCA2<sup>+</sup> pDCs were analyzed by flow cytometry after 7 days of co-culture. The fold expansion in absolute cell numbers was calculated on basis of total numbers of cells harvested from the cultures, percentages of transduced cells, and percentages of each population corrected for the number of input cells.

## 2.13. Statistical analysis

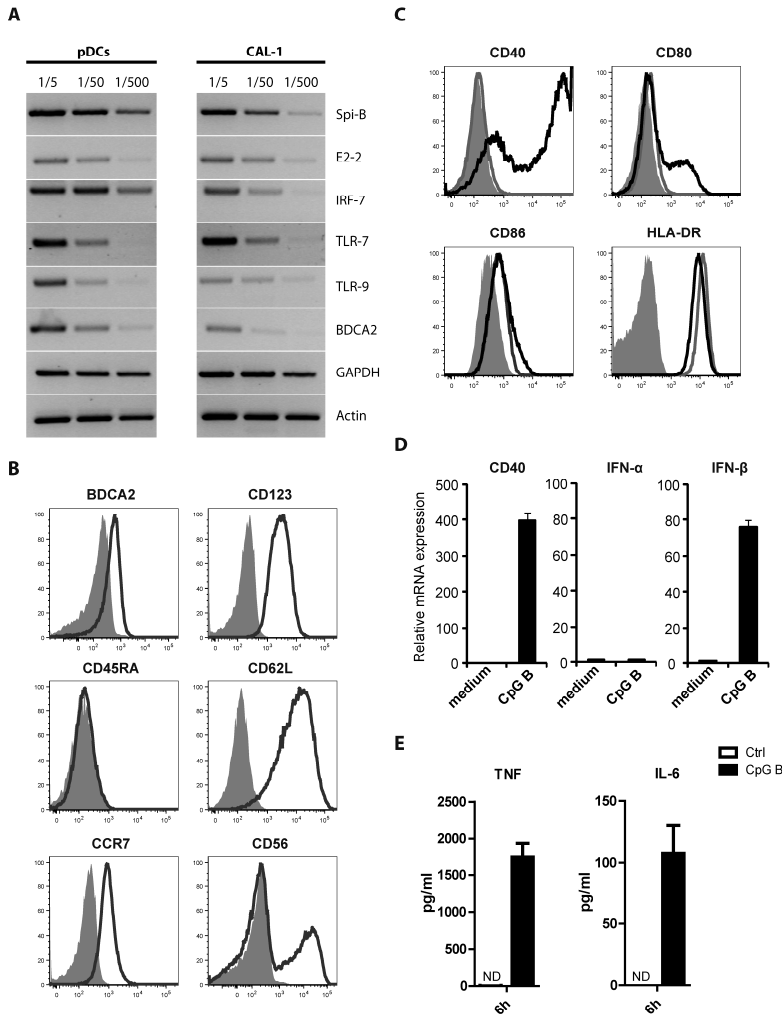
Data were subjected to two-tailed paired Student's *t*-test analysis using Graphpad Prism 5 for Windows (Graphpad software, San Diego, USA) and considered significant when at least  $p < 0.05$ .



### 3. Results

#### 3.1. CAL-1 cells represent a valid model to study certain aspects of primary pDCs

As it is technically challenging to study molecular mechanisms involved in differentiation and activation of fresh human pDC, we made use of the previously established pDC cell line CAL-1 derived from a patient with CD4<sup>+</sup>CD56<sup>+</sup> hematodermic neoplasm (25). To further characterize the CAL-1 cell line we first measured expression of genes known to be involved in development and activation of human pDCs by semi-quantitative RT-PCR (Fig. 1A) and compared expression to that in primary pDCs. Both freshly isolated pDCs and CAL-1 cells expressed the ETS transcription factor Spi-B, the basis-helix-loop-helix factor E2-2, the interferon response factor IRF-7, Toll like receptors TLR-7 and TLR-9, and the pDC restricted C-type lectin BDCA2. Except for CD45RA, the surface markers CD123 and BDCA2 as well as CCR7 and CD62L were detected by FACS analysis (Fig. 1B). In accordance with earlier observations, a fraction of CAL-1 cells expressed CD56 (25). To validate this cell line as an accurate model to investigate pathways involved in pDC maturation and function, we evaluated the capacity of CAL-1 cells to respond to various stimuli, including the TLR-9 agonist CpG-B ODN, the TLR-7 ligand R848, CD40L plus IL-3, and virus (HSV-1) (Fig. 1C-D-E and data not shown). Overnight stimulation of CAL-1 cells with CpG-B strongly increased the surface expression of maturation markers, including CD40, CD80, and to a lesser extent CD86 (Fig. 1C). HLA-DR was already highly expressed and not further up-regulated after activation. In accordance with these results, CD40 mRNA expression was strongly upregulated within 4 hours of stimulation (Fig. 1D). In addition, CpG-B-induced TLR-9 triggering induced IFN- $\beta$  mRNA (Fig. 1D) and protein (Supplemental Fig. 1) expression. CAL-1 cells stimulated with CpG-B either for 4 hours or overnight did not express IFN- $\alpha$  as determined by PCR, neither with primers recognizing specific IFN- $\alpha$  mRNA subtypes nor with primers recognizing all IFN- $\alpha$  subtypes (Fig. 1D, data not shown). As reported previously (25), also CpG-A did not induce IFN- $\alpha$  under these conditions. CAL-1 cells stimulated with CpG-B for 6 hours produced the pro-inflammatory cytokines IL-6 and TNF- $\alpha$  as detected by cytokine-bead-array experiments (Fig. 1E). Stimulation with the TLR7 agonist R848 similarly induced expression of these cytokines, although to lesser degree than CpG-B (Supplemental Fig. 1). Notably, CAL-1 cells did not produce any pro-inflammatory cytokines in the absence of stimulation. Taken together, these data provide convincing evidence that CAL-1 cells share common genetic and functional features with primary pDCs. Therefore, we consider CAL-1 cells a valid model to study molecular mechanisms involved in pDC activation and maturation.



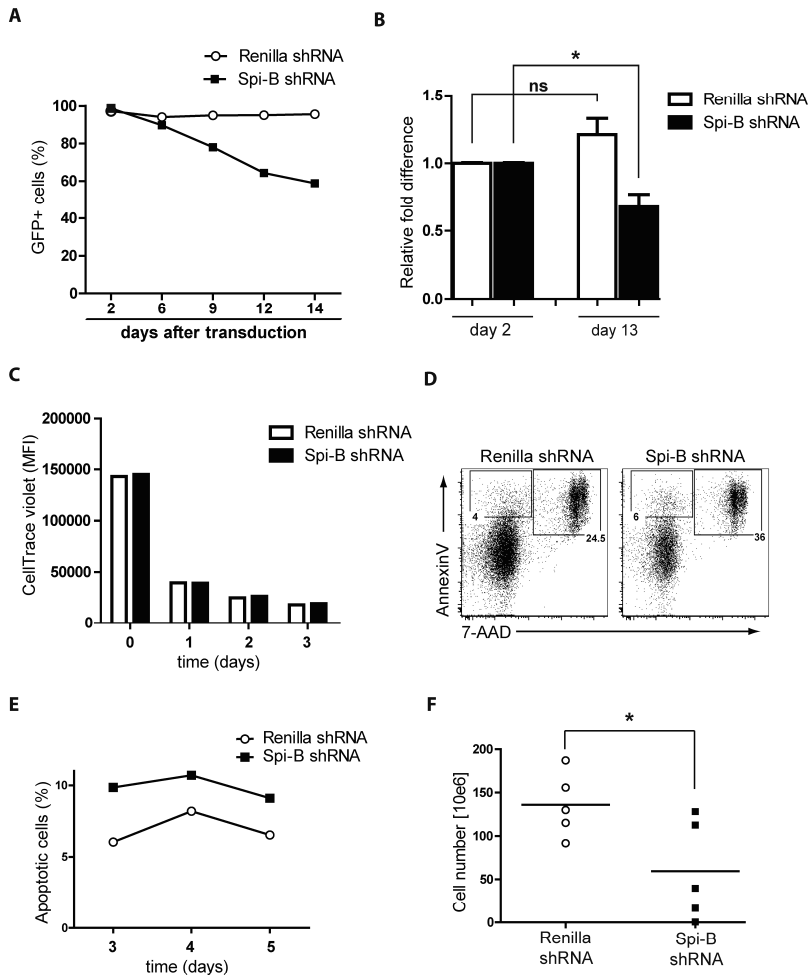
**Figure 1. CAL-1 cells closely resemble primary pDC.** (A) The leukemic pDC cell line CAL-1 expresses transcripts commonly present in freshly isolated primary pDC, including Spi-B, E2-2, IRF-7, TLR-7, TLR-9, and BDCA2 as shown by semi-quantitative RT-PCR. The housekeeping genes GAPDH and Actin are shown as loading controls. (B) Flow cytometric analysis of CAL-1 cells after staining with antibodies directed against the cell surface markers BDCA2, CD123, CCR7, CD45RA, CD62L, and CD56 (black lines). Isotype control stainings are shown as grey filled histograms. (C) Surface expression of the co-stimulatory molecules CD40, CD80, CD86, and HLA-DR was measured by flow cytometry on unstimulated CAL-1 (grey lines) and after 20 hours stimulation with CpG-B (black lines) (isotype control stainings are shown as grey filled histograms). (D) CAL-1 cells were stimulated for 4 hours with CpG-B or left unstimulated in medium only, and gene expression levels of CD40, IFN- $\alpha$  and IFN- $\beta$  were measured in stimulated vs. unstimulated cells by QPCR. (E) CAL-1 cells were cultured in the presence of CpG-B or medium for 6 hours. Culture supernatants were analyzed for the presence of TNF- $\alpha$  and IL-6 by cytokine bead array analysis. ND, not detectable (below detection sensitivity of the assay of 4 pg/ml).

### 3.2. Spi-B is required for leukemic pDC growth and survival *in vitro* and *in vivo*

Spi-B is highly expressed in pDCs, but it remains unresolved which target genes are controlled by Spi-B. To gain insight in this, CAL-1 cells were transduced with the lentiviral vector pTRIP expressing either shRNA targeting Spi-B mRNA or the non expressed Renilla mRNA as a control. The Spi-B shRNAs efficiently reduced the levels of Spi-B mRNA as well as protein (Supplemental Fig. 2-4)(6). High transduction efficiencies (> 95%) were obtained as measured by expression of GFP, which was independently driven from the EF1 $\alpha$  promoter in the lentiviral construct. Upon culture of the transduced cells we noted that the percentage of Spi-B shRNA expressing CAL-1 cells decreased over time unlike cells expressing control shRNA, where the percentage of GFP<sup>+</sup> cells remained constant (Fig. 2A). Reducing the Spi-B levels in CAL-1 cells led to a significant 1.5-fold reduction in absolute cell numbers as compared to control transduced CAL-1 cells 13 days after transduction (Fig. 2B). To further examine whether Spi-B is important in cell growth and/or cell survival we sorted GFP<sup>+</sup> Spi-B shRNA transduced cells and cultured them in the presence of tritiated thymidine (<sup>3</sup>H-TdR). Reducing Spi-B expression levels impaired <sup>3</sup>H-TdR incorporation in CAL-1 by 2.5-fold after 24 hours (data not shown). Impaired thymidine incorporation was not due to decreased cell proliferation, as shown by equal loss of CellTrace-violet by Spi-B shRNA and control shRNA transduced cells over time (Fig. 2C). This prompted us to analyze whether induction of apoptosis could explain reduced <sup>3</sup>H-TdR incorporation in Spi-B shRNA transduced CAL-1 cells. Therefore, we sorted transduced GFP<sup>+</sup> cells and stained with AnnexinV and 7-AAD and analyzed percentages of apoptotic cells after 5 days. We observed up to 1,5-fold more AnnexinV<sup>+</sup>7-AAD<sup>-</sup> early apoptotic cells and AnnexinV<sup>+</sup>7-AAD<sup>+</sup> late apoptotic/necrotic cells in cultures with Spi-B shRNA cells compared to control shRNA transduced cells (Fig. 2D), which was consistent when we analyzed this on consecutive days (Fig. 2E). Collectively, these results suggest that Spi-B exerts a role in cell survival in the CAL-1 cell line *in vitro*.

To substantiate the role of Spi-B in cell survival we performed *in vivo* cell growth experiments using an immune-deficient mouse model in which we monitored CAL-1 cell growth. We inoculated RAG-2<sup>-/-</sup> $\gamma$ c<sup>-/-</sup> mice, lacking mouse T, B and NK lymphocytes (28,29), with sorted GFP<sup>+</sup> CAL-1 cells. Simultaneously, mice were injected subcutaneously in the right and left flank with either 0.25 x 10<sup>6</sup> CAL-1 cells expressing Spi-B shRNA or Renilla shRNA, respectively (Fig. 2F). Matrigel was used to mimic a solid tumor like structure. Twenty days after inoculation, mice were sacrificed and the tumor tissue was removed and analyzed. By flow cytometry, we confirmed that the tumor cells were still GFP<sup>+</sup>CD123<sup>+</sup>CD4<sup>+</sup> CAL-1 cells (Supplemental Fig. 3 and data not shown). After counting cell numbers we found that decreased Spi-B levels in CAL-1 cells resulted in significantly reduced subcutaneous growth reaching on average over 2-fold lower cell numbers than control transduced tumors (Fig. 2F). Hardly any GFP<sup>+</sup> CAL-1 cells were

detected in blood or organs such as spleen and liver (Supplemental Fig. 3). Formally we cannot exclude the possibility that CAL-1 cells emigrated from the tumor and migrated to other sites that we did not analyze, or migrated and then died. When taken together, however, we conclude that Spi-B controls the growth and survival of this pDC cell line.

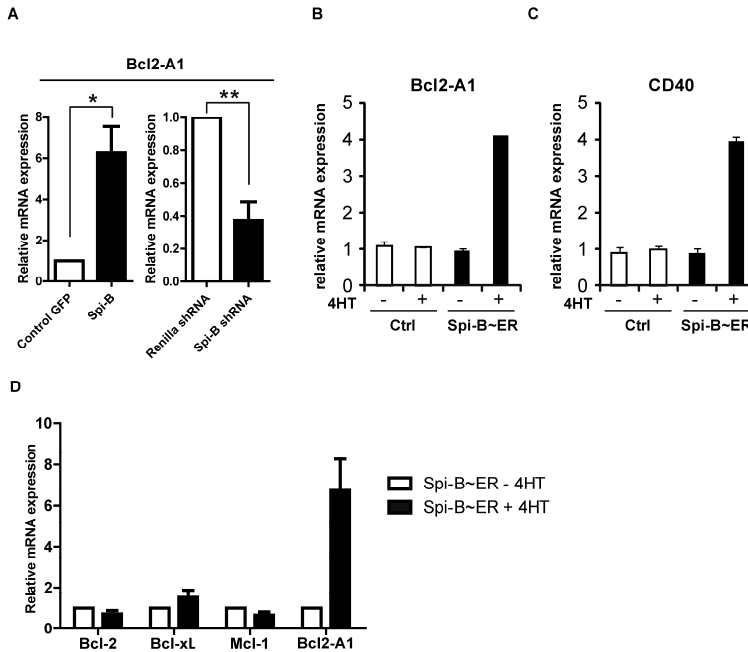


**Figure 2. Spi-B is required for CAL-1 cell survival and proliferation.** A) CAL-1 cells were transduced with Spi-B shRNA or control Renilla shRNA and cultured for 14 days. Cell growth was determined by flow cytometric analysis to measure the percentages of GFP<sup>+</sup> cells every 3 days. B) Mean values of 3 experiments in which GFP<sup>+</sup> cell percentages were determined at 13 days after transduction. Values were normalized to the percentage of GFP<sup>+</sup> cells at day 2 after transduction (see A, \*  $p = 0.026$ ). C) CAL-1 cells transduced with Spi-B shRNA or control Renilla shRNA were stained with the CellTrace violet proliferation kit. Mean fluorescence intensity (MFI) was followed for 3 days by flow cytometry. D) To assay for apoptosis, AnnexinV-PE and 7-AAD double staining was performed on CAL-1 cell transduced with Spi-B shRNA or control Renilla shRNA 5 days after sorting GFP<sup>+</sup> cells.▶

◀Numbers represent percentages of early apoptotic cells (AnnV<sup>+</sup>7-AAD<sup>-</sup>) and late apoptotic/necrotic cells (AnnV<sup>+</sup>7-AAD<sup>+</sup>) in the indicated gates. One representative experiment out of 3 is displayed. E) The percentages of apoptotic cells were measured over time in Spi-B shRNA or control Renilla shRNA transduced cells after sorting GFP<sup>+</sup> cells. One representative experiment is shown out of 2. F) RAG-2<sup>-/-</sup>γc<sup>-/-</sup> immunodeficient mice were injected subcutaneously in the right and left flank with 0.25.10<sup>6</sup> Cal-1 cells expressing Spi-B shRNAs or Renilla shRNAs. Tumor growth is shown as absolute cell numbers measured 20 days after engraftment (\**p* = 0.037). Each dot/square represents one mouse.

### 3.3. Spi-B regulates expression of Bcl2-A1

To elucidate the mechanism by which Spi-B controls cell survival we performed a microarray analysis to identify Spi-B induced target genes. We compared gene expression levels in CAL-1 cells with elevated Spi-B levels (after transduction with pLZRS-Spi-B-IRES-GFP) or decreased Spi-B levels (after transduction with pTRIP-SpiB-shRNA/EF1α-GFP) and their respective controls using Affymetrix chips, which cover approximately 21000 known genes of the NCBI database (data not shown). Among the presumptive Spi-B targets identified after bio-informatical analysis, we focused on genes known to be responsible for cell survival. Interestingly, Bcl2-A1 expression correlated with Spi-B levels in CAL-1 cells (data not shown). To validate this micro-array result, we measured expression of Bcl2-A1 in sorted GFP<sup>+</sup> CAL-1 cells by QPCR 48 hours after transduction with either pLZRS-SpiB-IRES-GFP, pTRIP-SpiB-shRNA/EF1α-GFP or appropriate control constructs. Spi-B overexpression resulted in a 6-fold increase in Bcl2-A1 levels (*p* < 0.05), whereas Bcl2-A1 levels were reduced 2.5-fold after knocking down Spi-B expression (*p* < 0.01) (Fig. 3A). To assess potential off-target effects of the Spi-B shRNA we analyzed expression of several proteins including Bcl-2, Bcl-xL, CALCRL and IRF-7, and found no significant differences between Spi-B and control shRNAs (Supplemental Fig. 4). To gain more insight in the regulation of Bcl2-A1 by Spi-B we used an inducible Spi-B-estrogen receptor (ER) fusion construct. Nuclear translocation of Spi-B was induced by this construct in the presence, but not in the absence of 4HT (13). Also we used the protein translation inhibitor cycloheximide (CHX), which is indicative for direct regulation of target genes, in combination with short-term induction of Spi-B with 4HT. Using this approach a 4-fold upregulation of Bcl2-A1 was observed by QPCR in Spi-B-ER transduced CAL-1 cells already 4 hours after Spi-B induction (Fig. 3B), suggesting that Bcl2-A1 may be a direct target gene of Spi-B. As a positive control we confirmed direct regulation of CD40 expression by Spi-B (Fig. 3C) (13). Our results support the notion that Spi-B dependent induction of Bcl2-A1 is comparable with CD40 induction under the same conditions. Notably, expression of other anti-apoptotic genes, including Bcl-2, Mcl-1, and Bcl-xL, was not upregulated by overexpression of Spi-B (Fig. 3D). Thus, our data provide evidence for a specific role of Spi-B to mediate survival of pDCs through Bcl2-A1 induction.

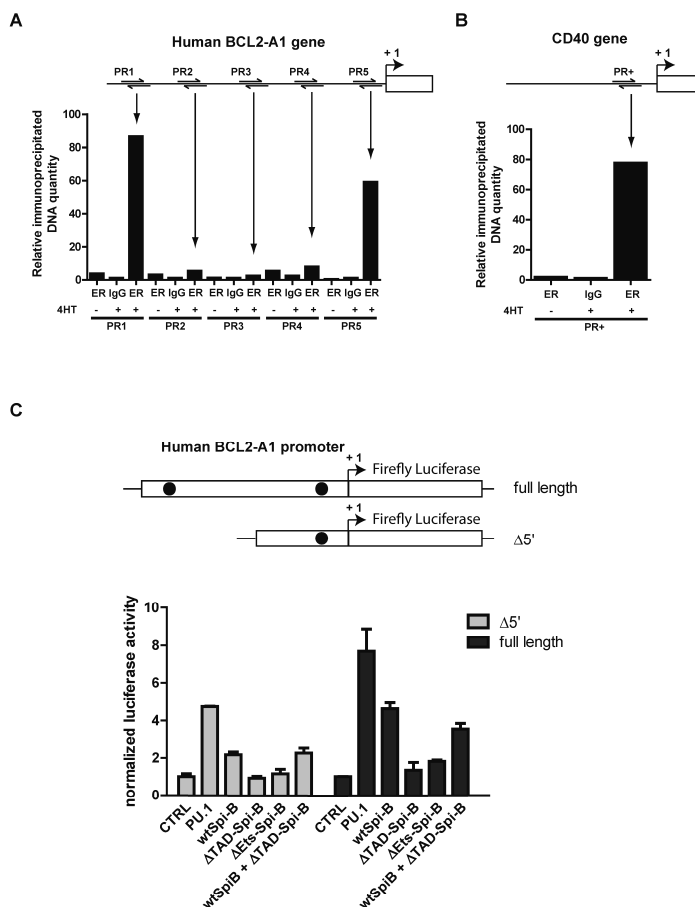


**Figure 3. Expression of Bcl2-A1 is regulated by Spi-B.** A) CAL-1 cells were transduced with vectors expressing Spi-B cDNA, Spi-B shRNAs or appropriate control vectors and sorted for GFP expression after 48 hours. Bcl2-A1 mRNA expression levels were measured by QPCR in 3 independent experiments. Values are normalized to control transduced cells. \*  $p < 0,05$ ; \*\*  $p < 0,01$ . B, C) Short term induction of Spi-B using Spi-B~ER transduced cells incubated with (black bar) or without (white bar) 4-hydroxy-tamoxifen (4HT) after pre-treatment with cycloheximide to avoid *de novo* protein synthesis. Bcl2-A1 (B) and CD40 (C) mRNA expression levels were measured by QPCR. Values were normalized to control transduced cells incubated without 4HT. D) mRNA levels of anti-apoptotic genes of the Bcl2 family were measured by QPCR in Spi-B~ER transduced CAL-1 cells after 4 hours of incubation in the presence (black bars) or absence (white bars) of 4HT. Values were normalized to transduced cells incubated without 4HT.

### 3.4. BCL2-A1 is a direct target gene of Spi-B

Our results showing that Bcl2-A1 is regulated by Spi-B prompted us to determine whether Spi-B directly binds the promoter region of BCL2-A1. Therefore, we performed ChIP assays using an anti-ER antibody or unspecific rabbit IgG on lysates derived from Spi-B~ER transduced CAL-1 cells that were either incubated in medium only or with 4HT for 4 hours. Chromatin abundance was determined by QPCR using different primer sets designed to amplify several regions of the promoter sequence of BCL2-A1 (Fig. 4A). We analyzed Spi-B binding to the BCL2-A1 gene locus up to 3.2 kb upstream of the transcriptional start site, and observed direct binding of Spi-B~ER to the BCL2-A1 promoter on 2 out of the 5 regions investigated only when 4HT was added (Fig. 4A). The

relative quantity of precipitation of these regions with Spi-B was comparable to the relative amount of precipitation of the CD40 promoter sequence, which was previously reported to be bound by Spi-B (13) (Fig. 4B).



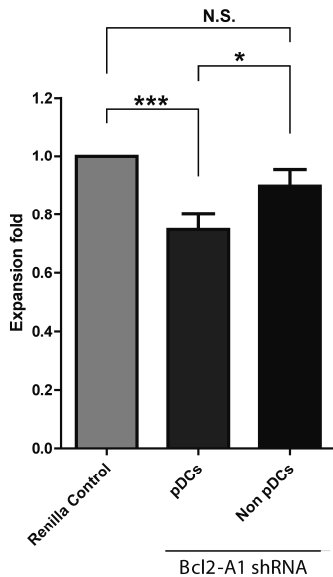
**Figure 4. BCL2-A1 is a direct target of Spi-B.** A) Binding of Spi-B to the BCL2-A1 promoter region (3.2 kb) was assessed by Chromatin Immunoprecipitation (ChIP) of the Spi-B~ER fusion protein using an anti-ER antibody (ER) or irrelevant IgG control antibody (IgG) in CAL-1 cells incubated with or without 4HT. Pulled down DNA was purified and amplified using 5 different primer sets (PR1-PR5). B) ChIP analysis of the known binding region of Spi-B to the CD40 promoter region was used as a positive control using the PR+ primer set. One representative ChIP experiment out of 4 is depicted. C) Setup of the dual luciferase assay is shown on top. The full length region of the BCL2-A1 promoter containing the 2 Spi-B binding sites (black dots) or lacking the 5' Spi-B binding site ( $\Delta 5'$ ) were subcloned into the pGL3-firefly luciferase backbone. Full length or  $\Delta 5'$  reporter constructs were cotransfected in 293T cells with vectors expressing the wild type Spi-B cDNA (wtSpi-B) or mutated cDNAs of Spi-B, either lacking the transactivation domain ( $\Delta$ TAD) or the Ets domain ( $\Delta$ Ets). Firefly luciferase activity was normalized to Renilla reniformis luciferase activity for transfection efficiency. Then, Firefly/Renilla activity was normalized to control (empty vector), which was set to 1.

To test whether binding of Spi-B to the BCL2-A1 promoter is functionally relevant, Luciferase reporter assays were performed. We employed a pGL3 vector expressing the Firefly luciferase gene controlled by the BCL2-A1 promoter, containing either the 2 putative Spi-B binding sites (full length), or only the 3' Spi-B binding site ( $\Delta 5'$ ) (Fig. 4C). Cotransfection of the full length reporter construct together with a Spi-B expression vector in 293T cells resulted in 4-fold induction of luciferase activity (Fig. 4D). Deletion of the 5' Spi-B binding site ( $\Delta 5'$ ) resulted in 2-fold lower luciferase induction by Spi-B as compared to the full length BCL2-A1 promoter reporter construct. We also analyzed two natural splicevariants of Spi-B,  $\Delta$ Ets-Spi-B, lacking the DNA binding ETS domain, and  $\Delta$ TAD-Spi-B, lacking the transactivation domain. Notably, the BCL2-A1 promoter reporter construct was completely unresponsive to these Spi-B mutants. Introduction of the wild type Spi-B together with  $\Delta$ TAD-Spi-B rescued luciferase activity. Activation of the BCL2-A1 promoter reporter by Spi-B was of similar magnitude as activation by its homologue PU.1, which was previously shown to transactivate this promoter (30). These observations, together with the ChIP results and lower Bcl2-A1 expression after reducing Spi-B levels, strongly suggest that Spi-B directly controls expression of the BCL2-A1 gene.

### 3.5. Bcl2-A1 is required for *in vitro* pDC development

Next, we aimed to decipher the physiological relevance of Bcl2-A1 regulation by Spi-B during human pDC development. We designed 3 different shRNAs to target Bcl2-A1 mRNA, of which shRNA1 and shRNA3 resulted in 40% knockdown in mRNA levels when transduced in Bcl2-A1 expressing CAL-1 cells (Supplemental Fig. 5). We used Bcl2-A1 shRNA3 in addition to Renilla control shRNA to transduce FL CD34<sup>+</sup>CD38<sup>-</sup> HPCs and performed *in vitro* human pDC differentiation assays as reported previously (9). We observed a significant decrease of 25% in absolute GFP<sup>+</sup>CD123<sup>+</sup>BDCA2<sup>+</sup> pDC cell numbers when overexpressing Bcl2-A1 shRNAs in HPCs as compared to control shRNAs after 7 days of culture (Fig. 5, n = 15, p = 0,003; Supplemental Table 2). It is interesting that this effect was specific for pDC development as other cell types (non-pDCs) that differentiated in this culture (including monocytic cells, not shown) were not significantly affected. Taken together, these data show that development of pDCs from CD34<sup>+</sup> HPCs depends on Bcl2-A1 expression. In combination with our previous observation that Spi-B is a master regulator of pDC development (6), these results lead us to propose that Spi-B mediates the survival of pDCs and possibly its progenitor cells by preventing apoptosis through induction of the anti-apoptotic gene BCL2-A1.





**Figure 5. Bcl2-A1 is required for pDC differentiation *in vitro*.** CD34<sup>+</sup>CD38<sup>-</sup> HPCs from human fetal liver were transduced with vectors expressing Bcl2-A1 shRNAs or Renilla control shRNAs, and co-cultured with OP9 stromal cells with IL-7 and Flt3L for 7 days. Flow cytometric analysis was performed to identify BDCA2<sup>+</sup>CD123<sup>+</sup>GFP<sup>+</sup> *in vitro* generated pDCs or GFP<sup>+</sup>BDCA2<sup>-</sup> non-pDCs. Shown are the absolute cell numbers normalized to the control culture of 15 donors, \*  $p = 0.012$ , \*\*\*  $p = 0.003$ ). Calculations were done as described in the Material & Methods section.

#### 4. Discussion

Here, we identified Bcl2-A1 as a direct transcriptional target of Spi-B in pDCs. As predicted by micro-array analysis, overexpression of Spi-B in a pDC cell line upregulated Bcl2-A1. In contrast, Spi-B knockdown reduced Bcl2-A1 transcription, which had direct consequences for cell survival both *in vitro* and *in vivo*. Direct binding of Spi-B to the Bcl2-A1 promoter was confirmed by ChIP assays. More importantly, *in vitro* human pDC differentiation from CD34<sup>+</sup> HPCs, which crucially depends on Spi-B (6), was impaired when inhibiting expression of Bcl2-A1. Taken together, these findings support a role for Spi-B as regulator of pDC survival.

Spi-B is involved at distinct steps during normal hematopoiesis, including differentiation of pDCs (9), plasma cells (13), and maintenance of follicular B cells (31). It is incompletely understood what the critical target genes are in these differentiation steps. Several targets were identified previously including CD40 (13), Grap2 (32), P2Y10 (33), c-rel (34), c-fes/c-fps (7), and Btk (35). Most of these targets were identified in mice, except CD40, which is also in human cells controlled by Spi-B (13). We were unable to confirm the other reported genes as candidate targets of Spi-B in human cells, either using micro-array analysis or QPCR (data not shown). While this may be explained by mouse versus human species differences, it may also reflect cellular differences as we employed a human pDC cell line, whereas others used microglial cells, macrophages, or B cells.

Except for c-rel and Btk (13,36) none of the other target genes mentioned are known to be expressed in human pDCs. It is interesting to understand how expression of Btk and c-rel is regulated in pDCs.

Expression of most reported target genes relied on the transactivating potential of Spi-B critically depending on both the ETS and TAD domains (13). We recently observed that Spi-B has repressor activity as well. Expression of the plasma cell genes PRDM1 and XBP-1 in human B cells was impaired by direct binding of Spi-B to their promoters (13). This relied on the ETS domain, but not the TAD domain, suggesting that DNA binding is requisite for repressor activity. A similar dual role was reported for PU.1 (reviewed in Marecki and Fenton (37)), which is most homologous to Spi-B (8). While the differential role of Spi-B as a transcriptional repressor or activator has not been characterized in much detail, for PU.1 it was reported that putative acetylation motifs within the ETS domain were crucial for its repressor activity (38). These motifs may mediate the interplay between PU.1 and other proteins, including B-cell lymphoma 6 (BCL-6) or IRF-8, which control the repressor or activator activity of PU.1, respectively (37). Interestingly, also Spi-B contains putative acetylation motifs in its ETS domain (data not shown). Moreover, Spi-B interacts with BCL-6 (39) and IRF members (40), suggesting that the repressor or activator function of Spi-B may be regulated similarly to PU.1. Whether regulation of cell survival induced by Spi-B involves such heterodimeric protein complexes is unknown. But as Spi-B binds the promoter of Bcl2-A1 in pDCs and promotes Bcl2-A1 expression, it seems likely that Spi-B induced cell survival depends on its transactivation properties. In accordance with this, we observed that not only the ETS domain, but also the TAD domain of Spi-B was essential to induce luciferase activity from the Bcl2-A1 promoter construct.

Bcl2-A1 and Bcl-xL are also induced after activation of NF- $\kappa$ B (24,41). In line with this, we observed that activation of freshly isolated pDCs through engagement of TLR-9 with CpG-ODN, which elicits strong activation of NF- $\kappa$ B, induced Bcl2-A1 expression, as well as other anti-apoptotic proteins such as Mcl-1, Bcl-xL, and Bcl-2 (data not shown). In mice, the NF- $\kappa$ B subunit c-rel was reported as direct target of Spi-B (34), although we were unable to confirm this in human cells. More importantly, it is unlikely that Bcl2-A1 induction in our study is the result of Spi-B induced c-rel mRNA expression, since Bcl2-A1 induction was observed in the presence of cycloheximide blocking *de novo* protein synthesis (Fig. 3B). This, together with our finding that Spi-B binds the Bcl2-A1 promoter suggests direct regulation of Bcl2-A1 by Spi-B, in the absence of TLR triggering and NF- $\kappa$ B activation.

*In vitro*, pDC rapidly die by apoptosis induction(14). Cell survival can be induced by addition of cytokines (GM-CSF, IL-3) (14) or TLR agonists (36), mediating upregulation of anti-apoptotic genes including Bcl-xL, Bcl-2, BIRC3, cFLAR (42), and Bcl2-A1 (43). *In vivo*, mouse pDCs are long lived cells (14). Consistent with this, the lifespan of pDCs

in healthy, non-infected animals was 5-times longer than the lifespan of spleen CD8<sup>+</sup> DCs (44). It is tempting to speculate that Spi-B controls pDCs homeostasis *in vivo* by upregulation of Bcl2-A1. While the number of pDCs in Bcl2-A1<sup>-/-</sup> mice is undetermined, neutrophil numbers in these mice were reduced due to enhanced apoptosis (45). Neutrophils do not express Spi-B, but do express high levels of PU.1 (46). Since PU.1 and Spi-B are highly homologues (8), and PU.1 binds the Bcl2-A1 promoter (30), this may explain the loss of neutrophils in Bcl2-A1<sup>-/-</sup> mice. As pDCs lack PU.1 expression (6), but do express high levels of Spi-B (9), we propose that apoptosis inhibition in pDC *in vivo* may be controlled by Spi-B induced expression of Bcl2-A1.

Impaired pDC differentiation when reducing Bcl2-A1 levels by shRNAs could partially be rescued by overexpression of Spi-B (data not shown). It is noteworthy, however, that Bcl2-A1 overexpression failed to rescue pDC development when HPCs were transduced with Spi-B shRNA (data not shown). This was not entirely unexpected, as it highlights the role of Spi-B as master regulator in pDC development. Previously, we showed that overexpression of Spi-B in HPCs downregulated expression of Inhibitor-of-DNA-binding (Id)2 thereby allowing E2-2 activity to promote pDC development (11). Hence, no single factor downstream of Spi-B may fully recapitulate the effects of Spi-B itself.

The leukemic pDC cell line CAL-1 expresses Spi-B, and depended on Spi-B for its survival as overexpression of Spi-B shRNAs was toxic for the cells. Our findings support the notion that Spi-B has an oncogenic role in pDC leukemic cells by inducing Bcl2-A1. Aberrant expression of Spi-B has also been implicated in tumorigenesis in human B cells. Spi-B transcripts were detected in several B cell derived malignancies, including multiple myeloma cells and B-chronic lymphocytic leukaemia (B-CLL) (47). In addition, high levels of Spi-B were detected in activated B-cell-like diffuse large B-cell lymphoma (ABC-DLBCL) either due to translocation of Spi-B to the Ig heavy-chain locus or to amplification of a chromosomal segment including the Spi-B locus (48). Interestingly, reducing Spi-B expression levels in an ABC-DLBCL cell line prevented cell survival as well (49). While the underlying mechanism was not investigated, it is tempting to speculate that Spi-B controls Bcl2-A1 expression in ABC-DLBCL cells supporting its poor clinical outcome. Taken together, this illustrates that Spi-B may be an attractive candidate gene for drug targeting in diverse types of lymphomas. Hence, expanding our knowledge on Spi-B and its target genes not only contributes to our general understanding of normal lymphocyte development, but in addition will be central to provide detailed insight in its role during oncogenesis.

## Acknowledgements

We thank Berend Hooibrink and Toni van Capel for maintaining the FACS facility. We acknowledge Prof.dr. Hazekamp and staff from the LUMC (Leiden, The Netherlands) for

providing human thymus tissue, the Bloemenhove clinic (Heemstede, The Netherlands) and staff for providing fetal tissues, dr. Kees Weijer and Arie Voordouw for collecting fetal tissues. We thank Dr. R. Schotte and Dr. N. Legrand for critically reading the manuscript. JJK is supported through a personal VIDI grant to BB (Dutch Science Foundation, no. 917.66.310). MB is supported through a personal VENI grant (Dutch Science Foundation) to MCW.

## Authorship

Contribution: J.J.K. designed research, performed experiments, analyzed data, and wrote the paper; M.B. and H.S. designed research, performed experiments, analyzed data; M.L., M.N. and R.G. performed experiments and analyzed data; S.K. and T.M. contributed essential reagent; D.A. and M.C.W. analyzed data; B.B. designed research, analyzed data and wrote the paper.

Conflict-of-interest disclosure: The authors declare no competing financial interests.

## References

1. Liu YJ. IPC: professional type 1 interferon-producing cells and plasmacytoid dendritic cell precursors. *Annu Rev Immunol* 2005;23:275-306.
2. Lande R, Gilliet M. Plasmacytoid dendritic cells: key players in the initiation and regulation of immune responses. *Ann N Y Acad Sci* 2010;1183:89-103.
3. Weijer K, Uittenbogaart CH, Voordouw A, Couwenberg F, Seppen J, Blom B, et al. Intrathymic and extrathymic development of human plasmacytoid dendritic cell precursors in vivo. *Blood* 2002;99:2752-2759.
4. Naik SH. Demystifying the development of dendritic cell subtypes, a little. *Immunol Cell Biol* 2008;86:439-452.
5. Blom B, Ho S, Antonenko S, Liu YJ. Generation of interferon alpha-producing predendritic cell (Pre-DC)2 from human CD34(+) hematopoietic stem cells. *J Exp Med* 2000;192:1785-1796.
6. Schotte R, Nagasawa M, Weijer K, Spits H, Blom B. The ETS transcription factor Spi-B is required for human plasmacytoid dendritic cell development. *J Exp Med* 2004;200:1503-1509.
7. Ray-Gallet D, Mao C, Tavitian A, Moreau-Gachelin F. DNA binding specificities of Spi-1/PU.1 and Spi-B transcription factors and identification of a Spi-1/Spi-B binding site in the c-fes/c-fps promoter. *Oncogene* 1995;11:303-313.
8. Ray D, Bosselut R, Ghysdael J, Mattei MG, Tavitian A, Moreau-Gachelin F. Characterization of Spi-B, a transcription factor related to the putative oncoprotein Spi-1/PU.1. *Mol Cell Biol* 1992;12:4297-4304.
9. Schotte R, Risoan MC, Bendriss-Vermare N, Bridon JM, Duhon T, Weijer K, et al. The transcription factor Spi-B is expressed in plasmacytoid DC precursors and inhibits T-, B-, and NK-cell development. *Blood* 2003;101:1015-1023.

10. Anderson MK, Hernandez-Hoyos G, Diamond RA, Rothenberg EV. Precise developmental regulation of Ets family transcription factors during specification and commitment to the T cell lineage. *Development* 1999;126:3131-3148.
11. Nagasawa M, Schmidlin H, Hazekamp MG, Schotte R, Blom B. Development of human plasmacytoid dendritic cells depends on the combined action of the basic helix-loop-helix factor E2-2 and the Ets factor Spi-B. *Eur J Immunol* 2008;38:2389-2400.
12. Cisse B, Caton ML, Lehner M, Maeda T, Scheu S, Locksley R, et al. Transcription factor E2-2 is an essential and specific regulator of plasmacytoid dendritic cell development. *Cell* 2008;135:37-48.
13. Schmidlin H, Diehl SA, Nagasawa M, Scheeren FA, Schotte R, Uittenbogaart CH, et al. Spi-B inhibits human plasma cell differentiation by repressing BLIMP1 and XBP-1 expression. *Blood* 2008;112:1804-1812.
14. O'Keeffe M, Hochrein H, Vremec D, Caminschi I, Miller JL, Anders EM, et al. Mouse plasmacytoid cells: long-lived cells, heterogeneous in surface phenotype and function, that differentiate into CD8(+) dendritic cells only after microbial stimulus. *J Exp Med* 2002;196:1307-1319.
15. Elmore S. Apoptosis: a review of programmed cell death. *Toxicol Pathol* 2007;35:495-516.
16. Werner AB, de Vries E, Tait SW, Bontjer I, Borst J. TRAIL receptor and CD95 signal to mitochondria via FADD, caspase-8/10, Bid, and Bax but differentially regulate events downstream from truncated Bid. *J Biol Chem* 2002;277:40760-40767.
17. D'Sa-Eipper C, Subramanian T, Chinnadurai G. bfl-1, a bcl-2 homologue, suppresses p53-induced apoptosis and exhibits potent cooperative transforming activity. *Cancer Res* 1996;56:3879-3882.
18. Wang CY, Guttridge DC, Mayo MW, Baldwin AS, Jr. NF-kappaB induces expression of the Bcl-2 homologue A1/Bfl-1 to preferentially suppress chemotherapy-induced apoptosis. *Mol Cell Biol* 1999;19:5923-5929.
19. Zhang H, Cowan-Jacob SW, Simonen M, Greenhalf W, Heim J, Meyhack B. Structural basis of BFL-1 for its interaction with BAX and its anti-apoptotic action in mammalian and yeast cells. *J Biol Chem* 2000;275:11092-11099.
20. Jung-Ha H, Kim D, Lee SB, Hong SI, Park SY, Huh J, et al. Expression of Bfl-1 in normal and tumor tissues: Bfl-1 overexpression in cancer is attributable to its preferential expression in infiltrating inflammatory cells. *Hum Pathol* 1998;29:723-728.
21. Lin EY, Orlofsky A, Berger MS, Prystowsky MB. Characterization of A1, a novel hemopoietic-specific early-response gene with sequence similarity to bcl-2. *J Immunol* 1993;151:1979-1988.
22. Karsan A, Yee E, Kaushansky K, Harlan JM. Cloning of human Bcl-2 homologue: inflammatory cytokines induce human A1 in cultured endothelial cells. *Blood* 1996;87:3089-3096.
23. Moreb JS, Schweder M. Human A1, a Bcl-2-related gene, is induced in leukemic cells by cytokines as well as differentiating factors. *Leukemia* 1997;11:998-1004.
24. Zong WX, Edelstein LC, Chen C, Bash J, Gelinas C. The prosurvival Bcl-2 homolog Bfl-1/A1 is a direct transcriptional target of NF-kappaB that blocks TNFalpha-induced apoptosis. *Genes Dev* 1999;13:382-387.
25. Maeda T, Murata K, Fukushima T, Sugahara K, Tsuruda K, Anami M, et al. A novel plasmacytoid dendritic cell line, CAL-1, established from a patient with blastic natural killer cell lymphoma. *Int J Hematol* 2005;81:148-154.
26. Schotte R, Schmidlin H, Nagasawa M, Dontje W, Karrich JJ, Uittenbogaart C, et al. Isolation and in vitro generation of gene-manipulated human plasmacytoid and conventional dendritic cells. *Methods Mol Biol* 2010;595:67-85.
27. Scheeren FA, Naspetti M, Diehl S, Schotte R, Nagasawa M, Wijnands E, et al. STAT5 regulates the self-renewal capacity and differentiation of human memory B cells and controls Bcl-6 expression. *Nat Immunol* 2005;6:303-313.

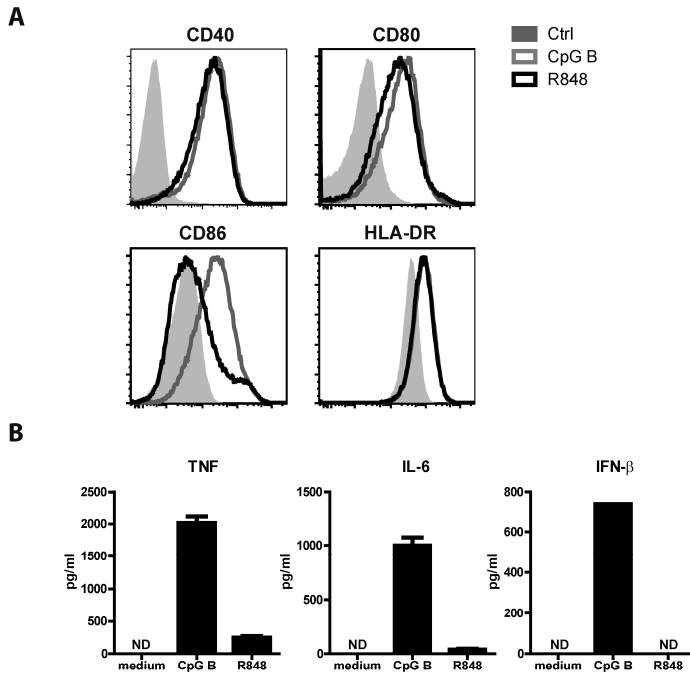
28. Shinkai Y, Rathbun G, Lam KP, Oltz EM, Stewart V, Mendelsohn M, et al. RAG-2-deficient mice lack mature lymphocytes owing to inability to initiate V(D)J rearrangement. *Cell* 1992;68:855-867.
29. Di Santo JP, Kuhn R, Muller W. Common cytokine receptor gamma chain (gamma c)-dependent cytokines: understanding in vivo functions by gene targeting. *Immunol Rev* 1995;148:19-34.
30. Jenal M, Batliner J, Reddy VA, Haferlach T, Tobler A, Fey MF, et al. The anti-apoptotic gene BCL2A1 is a novel transcriptional target of PU.1. *Leukemia* 2010;24:1073-1076.
31. DeKoter RP, Geadah M, Khoosal S, Xu LS, Thillainadesan G, Torchia J, et al. Regulation of follicular B cell differentiation by the related E26 transformation-specific transcription factors PU.1, Spi-B, and Spi-C. *J Immunol* 2010;185:7374-7384.
32. Garrett-Sinha LA, Hou P, Wang D, Grabiner B, Araujo E, Rao S, et al. Spi-1 and Spi-B control the expression of the Grap2 gene in B cells. *Gene* 2005;353:134-146.
33. Rao S, Garrett-Sinha LA, Yoon J, Simon MC. The Ets factors PU.1 and Spi-B regulate the transcription in vivo of P2Y10, a lymphoid restricted heptahelical receptor. *J Biol Chem* 1999;274:34245-34252.
34. Hu CJ, Rao S, Ramirez-Bergeron DL, Garrett-Sinha LA, Gerondakis S, Clark MR, et al. PU.1/Spi-B regulation of c-rel is essential for mature B cell survival. *Immunity* 2001;15:545-555.
35. Muller S, Sideras P, Smith CI, Xanthopoulos KG. Cell specific expression of human Bruton's agammaglobulinemia tyrosine kinase gene (Btk) is regulated by Sp1- and Spi-1/PU.1-family members. *Oncogene* 1996;13:1955-1964.
36. O'Keefe M, Grumont RJ, Hochrein H, Fuchsberger M, Gugasyan R, Vremec D, et al. Distinct roles for the NF-kappaB1 and c-Rel transcription factors in the differentiation and survival of plasmacytoid and conventional dendritic cells activated by TLR-9 signals. *Blood* 2005;106:3457-3464.
37. Marecki S, Fenton MJ. PU.1/Interferon Regulatory Factor interactions: mechanisms of transcriptional regulation. *Cell Biochem Biophys* 2000;33:127-148.
38. Kihara-Negishi F, Suzuki M, Yamada T, Sakurai T, Oikawa T. Impaired repressor activity and biological functions of PU.1 in MEL cells induced by mutations in the acetylation motifs within the ETS domain. *Biochem Biophys Res Commun* 2005;335:477-484.
39. Wei F, Zaprazna K, Wang J, Atchison ML. PU.1 can recruit BCL6 to DNA to repress gene expression in germinal center B cells. *Mol Cell Biol* 2009;29:4612-4622.
40. Escalante CR, Brass AL, Pongubala JMR, Shatova E, Shen LY, Singh H, et al. Crystal structure of PU.1/IRF-4/DNA ternary complex. *Molecular Cell* 2002;10:1097-1105.
41. Chen C, Edelstein LC, Gelinas C. The Rel/NF-kappaB family directly activates expression of the apoptosis inhibitor Bcl-x(L). *Mol Cell Biol* 2000;20:2687-2695.
42. Lepelletier Y, Zollinger R, Ghirelli C, Raynaud F, Hadj-Slimane R, Cappuccio A, et al. Toll-like receptor control of glucocorticoid-induced apoptosis in human plasmacytoid dendritic cells (pDCs). *Blood* 2010;116:3389-3397.
43. Danis B, George TC, Goriely S, Dutta B, Renneson J, Gatto L, et al. Interferon regulatory factor 7-mediated responses are defective in cord blood plasmacytoid dendritic cells. *Eur J Immunol* 2008;38:507-517.
44. Kamath AT, Pooley J, O'Keefe MA, Vremec D, Zhan Y, Lew AM, et al. The development, maturation, and turnover rate of mouse spleen dendritic cell populations. *J Immunol* 2000;165:6762-6770.
45. Hamasaki A, Sendo F, Nakayama K, Ishida N, Negishi I, Hatakeyama S. Accelerated neutrophil apoptosis in mice lacking A1-a, a subtype of the bcl-2-related A1 gene. *J Exp Med* 1998;188:1985-1992.
46. Chen HM, Zhang P, Voso MT, Hohaus S, Gonzalez DA, Glass CK, et al. Neutrophils and monocytes express high levels of PU.1 (Spi-1) but not Spi-B. *Blood* 1995;85:2918-2928.

## Chapter 2

47. Nagy M, Chapuis B, Matthes T. Expression of transcription factors Pu.1, Spi-B, Blimp-1, BSAP and oct-2 in normal human plasma cells and in multiple myeloma cells. *Br J Haematol* 2002;116:429-435.
48. Lenz G, Nagel I, Siebert R, Roschke AV, Sanger W, Wright GW, et al. Aberrant immunoglobulin class switch recombination and switch translocations in activated B cell-like diffuse large B cell lymphoma. *J Exp Med* 2007;204:633-643.
49. Lenz G, Wright GW, Emre NC, Kohlhammer H, Dave SS, Davis RE, et al. Molecular subtypes of diffuse large B-cell lymphoma arise by distinct genetic pathways. *Proc Natl Acad Sci USA* 2008;105:13520-13525.

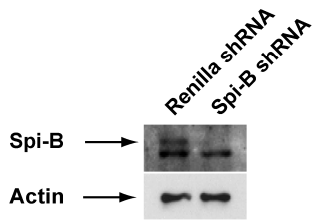
## Supplemental Information

2

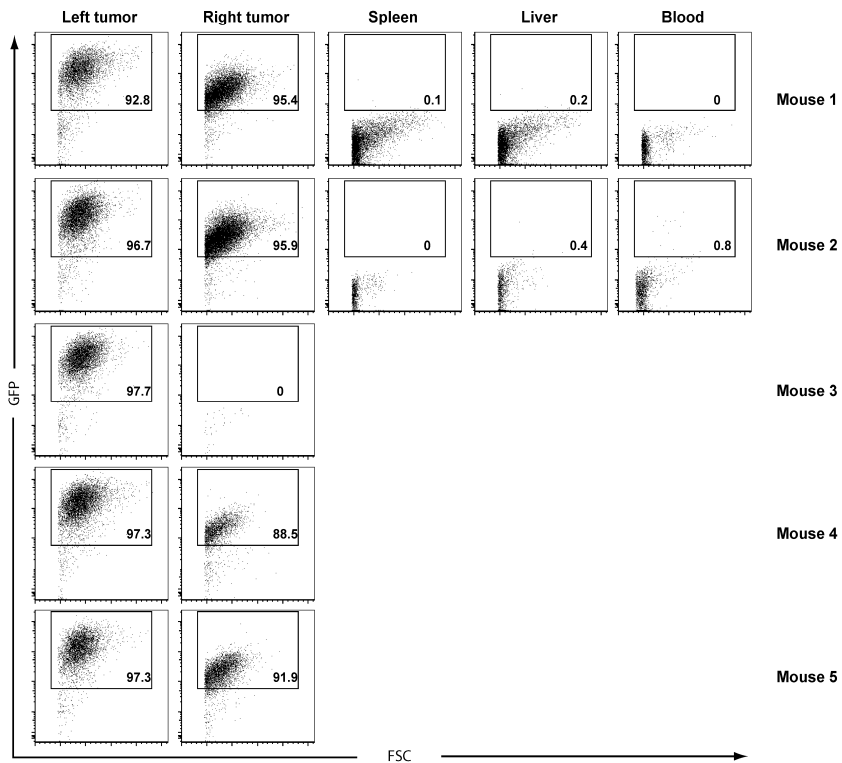


**Supplemental Figure 1. CAL-1 cell response to TLR stimulation.** (A) Surface expression of the co-stimulatory molecules CD40, CD80, CD86, and HLA-DR was measured by flow cytometry on unstimulated CAL-1 (grey filled histograms) and after 20 hours stimulation with CpG-B (gray lines), or with the TLR7 ligand R848 (black lines). (B) CAL-1 cells were cultured in the presence or absence of CpG-B or R848 for 16 hours. Culture supernatants were analyzed for the presence of TNF, and IL-6 by cytokine bead array analysis. ND, not detectable (below detection sensitivity of the assay of 4 pg/ml). The presence of IFN- $\beta$  in the culture supernatants was assessed by ELISA. ND, not detectable (below detection sensitivity of the assay of 125 pg/ml).

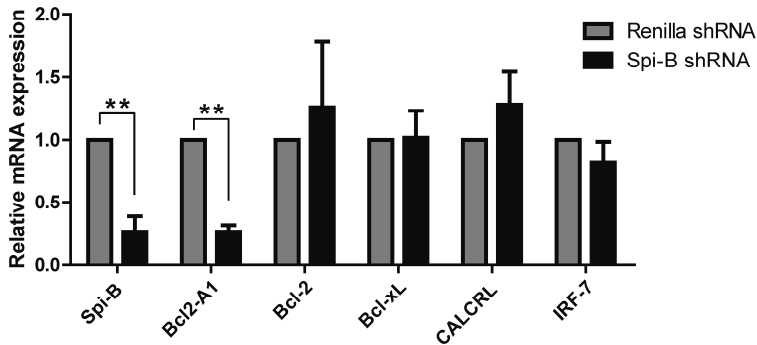




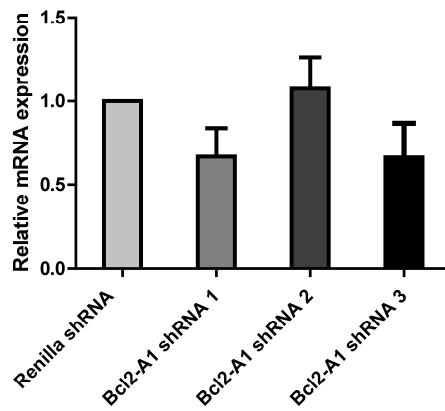
**Supplemental Figure 2: Spi-B overexpression and knock-down in CAL-1 cells.** Cal-1 cells were transduced with LZRS Spi-B-GFP, pTRIP-Spi-B-shRNA or control vectors and sorted for GFP expression after 48h. Cell lysates were analyzed by immunoblotting for Spi-B levels; the specific band is indicated by an arrow. One representative experiment out of three is shown.



**Supplemental Figure 3. Transduced CAL-1 cells are almost undetectable in the periphery of immunodeficient mice, but remain at the injection site.** RAG-2<sup>-/-</sup>γ<sup>-/-</sup> immunodeficient mice (n = 5) were injected subcutaneously in the right and left flank with 0.25 x 10<sup>6</sup> CAL-1 expressing Spi-B shRNAs or Renilla shRNAs, respectively. Tumors, spleen, liver and blood were analyzed for GFP expression by flow cytometry 20 days after engraftment.



**Supplemental Figure 4. Effect of Spi-B knock-down on gene expression in CAL1 cells.** CAL-1 cells were transduced with a construct expressing shRNA against Renilla or with a construct expressing Spi-B shRNA. Cells were sorted for GFP expression and effect of down regulation of Spi-B on several genes was assessed by QPCR. mRNA expression were normalized to the three housekeeping genes HPRT, GAPDH and 18S RNA (\*\*  $p < 0.01$ ).



**Supplemental Figure 5. Knock-down efficiency of Bcl2-A1 shRNAs.** CAL-1 cells were transduced with a control construct targeting an irrelevant gene product (Renilla) or with 3 different Bcl2-A1 shRNA/EF1 $\alpha$ -GFP lentiviral constructs targeting Bcl2-A1 mRNA. shRNA1 (5'-GGAGTTTGAAGACGGC ATC), shRNA2 (5'-CACAGGAGAATGGATAAGG), and shRNA3 (5'-ATGCTATCTCTCCTGAAGC). Cells were sorted for GFP expression and Bcl2-A1 mRNA levels were assessed by QPCR. One representative experiment out of three is displayed.

## Chapter 2

**Supplemental Table 1. Primer sequences.** Primer pairs were checked for specificity by melting curve analysis and gel electrophoresis. Primer efficiencies were determined by template dilution and were highly similar.

### Primers for PCR or QPCR

	<b>forward</b>	<b>reverse</b>
<b>Total IFN-<math>\alpha</math></b>	GACTCCATCTTGGCTGTGA	TGATTTCTGCTCTGACAACCT
<b>IFN-<math>\beta</math>1</b>	GAGCTACAACCTTGCTTGGATTCC	CAAGCCTCCCATTCAATTGC
<b>Bcl2-A1</b>	AATGTTGCGTTCCTCAGTCCA	TGCCGTCTTGAAACTCCTTT
<b>BDCA2</b>	AAAGAAGCCAATCCCATCCT	GCCAAGCCCTTAGATCCTTC
<b>Bcl2</b>	ACGACAACCGGGAGATAGTG	CCAGCCTCCGTTATCCTG
<b>Bcl-xL</b>	AATGGCAACCCATCCTGGCA	TTCTCCTGGATCCAAGGCTC
<b>Mcl-1</b>	AGACCTTACGACGGGTTGG	CCAGCTCCTACTCCAGCAAC
<b><math>\beta</math>-actin</b>	CAAGAGATGGCCACGGCTGCT TCCAGC	ATGGAGTTGAAGGTAGTTTCG
<b>CD40</b>	CGGCTTCTTCTCCAATGTGT	ACCAAGAGGATGGCAAACAG
<b>Spi-B</b>	GCATACCCACGGAGAACT	GGCTGTCCAACGGTAAGTCT
<b>E2-2</b>	ATGGGAGAGAATCAAACCTTA	CCTCCATGGCACTACTGTGA
<b>CALCRL</b>	GCGACCTGAAGGAAAAGATTG	GCTTCTGAGTTGGAAAAGCTG
<b>TLR-7</b>	TGCTCTGCTCTCTTCAACA	ACCATCTAGCCCCAAGGAGT
<b>TLR-9</b>	CCTGTGGGAAGGGACCTC	GTAGGAGGCAGGCAAGGTA
<b>IRF7</b>	GCAAGGTGTACTGGGAGGTG	CGAAGCCCAGGTAGATGGTA
<b>GAPDH</b>	GAGTCAACGGATTTGGTCTGT	GACAAGCTTCCCCTTCTCAG
<b>HPRT</b>	GACCAGTCAACAGGGGACAT	CCTGACCAAGGAAAGCAAAG
<b>18S RNA</b>	AGACAACAAGCTCCGTGAAGA	CAGAAGTGACGCAGCCCTCTA

### Primers for CHIP

	<b>forward</b>	<b>reverse</b>
<b>CD40 (PR+)</b>	ATGGATGGGAGTTGAGACG	TATCCTGGCAGAACCGAA
<b>Bcl2A1</b>		
<b>PR1</b>	ACCATTTACATTCCCACCA	AAGCCACTTCCTCATCCTGT
<b>PR2</b>	TGGGATTACAGGCACACG	GTTGACAGGGGCTGAGAAGA
<b>PR3</b>	TTTGGTAGAGATGGGGTTTCA	TGGGTGGCAGAGAACAGG
<b>PR4</b>	GAGAGATTTGGCTGGGACTG	TTGGTCTTACCTTCCACCT
<b>PR5</b>	AGGAGGAAGATGGGGTAGGA	GACTGAGCAAAGCAGGAACC

**Supplemental Table 2. Reduced levels of Bcl2-A1 impair the in vitro differentiation of FL CD34+CD38- HSCs into pDC.** Numbers represent the fold expansion in absolute cell numbers in the GFP+ population. The calculation is described in the Material and Methods section. pDC are gated as BDCA2+CD123++ cells; non-pDC are gated as BDCA2- cells.

Exp.	shRNA/GFP+	pDC	non-pDC	Exp.	shRNA/GFP+	pDC	non-pDC
1	control	41	1366	9	control	58	2137
	Bcl2-A1	23	1043		Bcl2-A1	44	2193
2	control	47	839	10	control	7	375
	Bcl2-A1	47	1037		Bcl2-A1	4	239
3	control	272	3735	11	control	23	833
	Bcl2-A1	234	3376		Bcl2-A1	18	692
4	control	288	3578	12	control	130	2059
	Bcl2-A1	295	4119		Bcl2-A1	103	2082
5	control	81	1013	13	control	137	2417
	Bcl2-A1	71	980		Bcl2-A1	94	1534
6	control	75	1998	14	control	28	1057
	Bcl2-A1	64	1913		Bcl2-A1	7	948
7	control	38	729	15	control	21	658
	Bcl2-A1	26	302		Bcl2-A1	21	713
8	control	14	1234				
	Bcl2-A1	8	1152				