



UvA-DARE (Digital Academic Repository)

Asteroseismology of the Open Clusters NGC 6791, NGC 6811, and NGC 6819 from 19 Months of Kepler Photometry

Corsaro, E.; Stello, D.; Huber, D.; Bedding, T.R.; Bonanno, A.; Brogaard, K.; Kallinger, T.; Benomar, O.; White, T.R.; Mosser, B.; Basu, S.; Chaplin, W.J.; Christensen-Dalsgaard, J.; Elsworth, Y.P.; García, R.A.; Hekker, S.; Kjeldsen, H.; Mathur, S.; Meibom, S.; Hall, J.R.; Ibrahim, K.A.; Klaus, T.C.

DOI

[10.1088/0004-637X/757/2/190](https://doi.org/10.1088/0004-637X/757/2/190)

Publication date

2012

Document Version

Final published version

Published in

Astrophysical Journal

[Link to publication](#)

Citation for published version (APA):

Corsaro, E., Stello, D., Huber, D., Bedding, T. R., Bonanno, A., Brogaard, K., Kallinger, T., Benomar, O., White, T. R., Mosser, B., Basu, S., Chaplin, W. J., Christensen-Dalsgaard, J., Elsworth, Y. P., García, R. A., Hekker, S., Kjeldsen, H., Mathur, S., Meibom, S., ... Klaus, T. C. (2012). Asteroseismology of the Open Clusters NGC 6791, NGC 6811, and NGC 6819 from 19 Months of Kepler Photometry. *Astrophysical Journal*, 757(2), 190. <https://doi.org/10.1088/0004-637X/757/2/190>

General rights

It is not permitted to download or to forward/distribute the text or part of it without the consent of the author(s) and/or copyright holder(s), other than for strictly personal, individual use, unless the work is under an open content license (like Creative Commons).

Disclaimer/Complaints regulations

If you believe that digital publication of certain material infringes any of your rights or (privacy) interests, please let the Library know, stating your reasons. In case of a legitimate complaint, the Library will make the material inaccessible and/or remove it from the website. Please Ask the Library: <https://uba.uva.nl/en/contact>, or a letter to: Library of the University of Amsterdam, Secretariat, Singel 425, 1012 WP Amsterdam, The Netherlands. You will be contacted as soon as possible.

ASTEROSEISMOLOGY OF THE OPEN CLUSTERS NGC 6791, NGC 6811, AND NGC 6819 FROM 19 MONTHS OF *KEPLER* PHOTOMETRY

ENRICO CORSARO^{1,2}, DENNIS STELLO³, DANIEL HUBER^{3,4}, TIMOTHY R. BEDDING³, ALFIO BONANNO², KARSTEN BROGAARD⁵,
THOMAS KALLINGER⁶, OTHMAN BENOMAR³, TIMOTHY R. WHITE³, BENOIT MOSSER⁷, SARBANI BASU⁸, WILLIAM J. CHAPLIN^{9,10},
JØRGEN CHRISTENSEN-DALSGAARD^{10,11}, YVONNE P. ELSWORTH⁹, RAFAEL A. GARCÍA^{10,12}, SASKIA HEKKER¹³, HANS KJELDSSEN¹¹,
SAVITA MATHUR^{9,14}, SØREN MEIBOM¹⁵, JENNIFER R. HALL¹⁶, KHADEEJAH A. IBRAHIM¹⁶, AND TODD C. KLAUS¹⁶

¹ Department of Physics and Astronomy, Astrophysics Section, University of Catania, Via S. Sofia 78, I-95123 Catania, Italy

² I.N.A.F.-Astrophysical Observatory of Catania, Via S. Sofia 78, I-95123 Catania, Italy

³ Sydney Institute for Astronomy (SIfA), School of Physics, University of Sydney, NSW 2006, Australia

⁴ NASA-Ames Research Center, Moffett Field, CA 94035-0001, USA

⁵ Department of Physics and Astronomy, University of Victoria, P.O. Box 3055, Victoria, BC V8W 3P6, Canada

⁶ Instituut voor Sterrenkunde, K.U. Leuven, Celestijnenlaan 200D, B-3001 Leuven, Belgium

⁷ LESIA-Observatoire de Paris, CNRS, Université Pierre et Marie Curie, Université Denis Diderot, F-92195 Meudon cedex, France

⁸ Department of Astronomy, Yale University, P.O. Box 208101, New Haven, CT 06520-8101, USA

⁹ School of Physics and Astronomy, University of Birmingham, Edgbaston, Birmingham B15 2TT, UK

¹⁰ Kavli Institute for Theoretical Physics, Kohn Hall, University of California, Santa Barbara, CA 93106, USA

¹¹ Danish AsteroSeismology Centre (DASC), Department of Physics and Astronomy, Aarhus University, DK-8000 Aarhus C, Denmark

¹² Laboratoire AIM, CEA/DSM CNRS-Université Paris Diderot IRFU/SAP, F-91191 Gif-sur-Yvette Cedex, France

¹³ Astronomical Institute Anton Pannekoek, University of Amsterdam, Science Park 904, 1098 XH Amsterdam, The Netherlands

¹⁴ High Altitude Observatory, NCAR, P.O. Box 3000, Boulder, CO 80307, USA

¹⁵ Harvard-Smithsonian Center for Astrophysics, 60 Garden Street, Cambridge, MA 02138, USA

¹⁶ Orbital Sciences Corporation/NASA Ames Research Center, Moffett Field, CA 94035, USA

Received 2012 March 4; accepted 2012 August 6; published 2012 September 17

ABSTRACT

We studied solar-like oscillations in 115 red giants in the three open clusters, NGC 6791, NGC 6811, and NGC 6819, based on photometric data covering more than 19 months with NASA’s *Kepler* space telescope. We present the asteroseismic diagrams of the asymptotic parameters $\delta\nu_{02}$, $\delta\nu_{01}$, and ϵ , which show clear correlation with fundamental stellar parameters such as mass and radius. When the stellar populations from the clusters are compared, we see evidence for a difference in mass of the red giant branch stars and possibly a difference in structure of the red clump stars, from our measurements of the small separations $\delta\nu_{02}$ and $\delta\nu_{01}$. Ensemble échelle diagrams and upper limits to the linewidths of $\ell = 0$ modes as a function of $\Delta\nu$ of the clusters NGC 6791 and NGC 6819 are also shown, together with the correlation between the $\ell = 0$ ridge width and the T_{eff} of the stars. Lastly, we distinguish between red giant branch and red clump stars through the measurement of the period spacing of mixed dipole modes in 53 stars among all the three clusters to verify the stellar classification from the color–magnitude diagram. These seismic results also allow us to identify a number of special cases, including evolved blue stragglers and binaries, as well as stars in late He-core burning phases, which can be potentially interesting targets for detailed theoretical modeling.

Key words: open clusters and associations: individual – stars: evolution – stars: oscillations – techniques: photometric

Online-only material: color figures

1. INTRODUCTION

Many recent studies of solar-like oscillations of red giant stars have been focused on large ensembles of stars, made possible by the flood of high-quality photometric data provided by the space missions *CoRoT* (e.g., De Ridder et al. 2009; Kallinger et al. 2010b; Mosser et al. 2011b) and *Kepler* (e.g., Borucki et al. 2010; Koch et al. 2010; Bedding et al. 2010). Particular attention has been given to the three open clusters NGC 6791, NGC 6811, and NGC 6819 in the *Kepler* field (Stello et al. 2010; Basu et al. 2011; Hekker et al. 2011; Stello et al. 2011a, 2011b; Miglio et al. 2012), due to the well-known advantage of cluster stars sharing common properties, which allows for more stringent investigations of stellar evolution theory.

Among the highlights in recent results relevant for our study are the measurements of the small frequency separations $\delta\nu_{02}$, $\delta\nu_{01}$ and of the dimensionless term ϵ , their correlation with the

large frequency separation (see Bedding et al. 2010; Huber et al. 2010; Kallinger et al. 2012, for previous results on field red giant stars), and their dependence on stellar mass (Montalbán et al. 2010; Kallinger et al. 2012). Also, the results on the ensemble échelle diagrams have allowed for the investigation of ensemble properties of the modes, including the measurement of the mean small spacing $\delta\nu_{03}$ (Bedding et al. 2010; Huber et al. 2010) and the linewidths of the dipole modes and their correlation to fundamental stellar properties (e.g., see Chaplin et al. 2009; Baudin et al. 2011; Appourchaux et al. 2012; Belkacem et al. 2012), which are important for the comprehension of the physics responsible for the excitation and damping of solar-like oscillations. Finally, the period spacing analysis for the investigation of the evolutionary stage of red giants (Bedding et al. 2011; Mosser et al. 2011a) now allows us to distinguish between He-core burning red giants and those only burning hydrogen in a shell.

Here, we study 115 red giants belonging to the above-mentioned clusters, continuously observed for 19 months by the NASA *Kepler Mission* (see Jenkins et al. 2010b, Gilliland et al. 2010, Brown et al. 2011, for details on the data pipeline and acquisition, for a general introduction to the asteroseismic program, and for a description of the Kepler Input Catalog, respectively). Our study is made along the same lines as those described by Huber et al. (2010), who analyzed the first 4.5 months of *Kepler* observations of field red giants. In contrast to Huber et al. (2010), our cluster red giants have the great advantage of providing more homogeneous samples because age, metallicity, and mass (see Basu et al. 2011; Miglio et al. 2012) are about the same. In particular, NGC 6791 is a very old (~ 8.3 Gyr; Brogaard et al. 2012) and metal-rich ($[\text{Fe}/\text{H}] = 0.29 \pm 0.03$ (random) ± 0.07 (systematic); Brogaard et al. 2011) open cluster, with average masses $M_{\text{RGB}} = 1.20 \pm 0.01 M_{\odot}$ (Basu et al. 2011) and $M_{\text{RC}} = 1.15 \pm 0.03 M_{\odot}$ (Miglio et al. 2012) for red giant branch (RGB) and red clump (RC) stars, respectively (see also Brogaard et al. 2012, for recent results from eclipsing binaries). NGC 6819 is a middle-aged (2–2.4 Gyr; Basu et al. 2011) open cluster, with solar metallicity ($[\text{Fe}/\text{H}] = 0.09 \pm 0.03$; Bragaglia et al. 2001) and average masses $M_{\text{RGB}} = 1.68 \pm 0.03 M_{\odot}$ and $M_{\text{RC}} = 1.65 \pm 0.04 M_{\odot}$ for RGB and RC stars, respectively. The third open cluster, NGC 6811, is characterized by a young (0.7 ± 0.1 Gyr; Glushkova et al. 1999) and possibly solar-metallicity star population (suggested by two independent spectroscopic investigations by H. Bruntt et al. 2012, in preparation, and J. Molenda-Žakowicz et al. 2012, in preparation), where a small number of RC stars have been observed, showing an average mass $M_{\text{RC}} = 2.35 \pm 0.04 M_{\odot}$ (Stello et al. 2011a, 2011b). The temperature estimates for both NGC 6791 and NGC 6819 were derived by Hekker et al. (2011). In particular, they used color–temperature calibrations by Ramírez & Meléndez (2005) and *JHK* photometry from the Two Micron All Sky Survey catalog (Skrutskie et al. 2006), which is available for all the stars of the sample. V magnitudes are taken from Stetson et al. (2003) for NGC 6791 and from Hole et al. (2009), in order to derive temperatures based on the $(V - K)$ color. The adopted reddenings are $E(B - V) = 0.16 \pm 0.02$ for NGC 6791 (Brogaard et al. 2011) and $E(B - V) = 0.15$ for NGC 6819 (Bragaglia et al. 2001). Lastly, Basu et al. (2011) estimated Distance Moduli for both NGC 6791 and NGC 6819 by adopting the extinction $A_V = 3.1E(B - V)$, which yielded $(m - M)_0 = 13.11 \pm 0.06$ and $(m - M)_0 = 11.85 \pm 0.05$, respectively.

After briefly introducing the parameters involved in our study in Section 2, we describe the code developed for this work in Section 3, which concerns the analysis of the average p -mode structure in the power spectrum. In Section 4 we show the resulting asteroseismic ensemble diagrams and the linewidths of radial modes as a function of fundamental stellar parameters, while Section 5 presents the analysis of the period spacing of mixed dipole modes following the approach of Bedding et al. (2011). Finally, we conclude in Section 6.

2. ASYMPTOTIC PARAMETERS

Before proceeding with the description of the data analysis, it is helpful to introduce the physical quantities that we study in this work. As known from the asymptotic theory of solar-like oscillations, acoustic standing waves (also known as p modes) with low angular degrees, ℓ , and high radial orders, n , show regular frequency spacings according to the relation

(Vandakurov 1968; Tassoul 1980; Gough 1986)

$$v_{n\ell} \simeq \Delta v \left(n + \frac{\ell}{2} + \epsilon \right) - \delta v_{0\ell}. \quad (1)$$

Here,

$$\Delta v = \left(2 \int_0^R \frac{dr}{c(r)} \right)^{-1} \quad (2)$$

is known as the large frequency separation, which scales roughly as the square root of the mean stellar density (Ulrich 1986), while ϵ is a phase shift sensitive to the properties of the near-surface layers of the star (Christensen-Dalsgaard & Perez Hernandez 1992). The term $\delta v_{0\ell}$ is known as the small frequency separation, and for $\ell = 1, 2$, and 3 it is defined as

$$\delta v_{02} = v_{n,0} - v_{n-1,2}, \quad (3)$$

$$\delta v_{01} = \frac{1}{2}(v_{n,0} + v_{n+1,0}) - v_{n,1}, \quad (4)$$

$$\delta v_{03} = \frac{1}{2}(v_{n,0} + v_{n+1,0}) - v_{n,3}. \quad (5)$$

The small frequency separations are related to the sound speed gradient in the stellar core and hence to the mean molecular weight, which increases as the star evolves. Mixed modes occur as the frequencies of the g modes in the core and the p modes in the envelope become similar during the subgiant and red giant phase. As the star evolves, its mixed modes will undergo avoided crossings, causing so-called mode bumping, which broadens the ridges in the échelle diagram (e.g., see Stello 2011). As argued by Bedding et al. (2010) and Huber et al. (2010), the small spacing δv_{03} is therefore preferred in red giants over the more conventional δv_{13} . We note that mode bumping mostly affects the dipole modes as they penetrate deeper into the star and hence couple more strongly to the g modes in the core (Dupret et al. 2009). The dipole modes are therefore sensitive to the core properties of the star, which allows us to determine which red giants burn helium or not (see Section 5).

Figure 1 shows a typical power spectrum of a low-luminosity RGB star, KIC 2436593, observed in NGC 6791. The mode identification for some of the modes is shown, together with the indication of regions containing mixed $\ell = 1$ modes, represented by the gray-shaded strips. The large separation Δv and the small spacing δv_{02} are indicated as well. The inset shows a zoom-in of one of the gray-shaded strips, where the observed period spacing of the dipole modes, ΔP_{obs} , is marked.

3. OBSERVATIONS AND DATA ANALYSIS

The photometric time series of the 115 red giants used in this work were obtained in *Kepler*'s long-cadence mode ($\Delta t \sim 30$ min; Jenkins et al. 2010a) between 2009 May 13 and 2010 December 22. This corresponds to the observing quarters 1–7, providing a total of almost 18,000 data points per star (see García et al. 2011, for details on the detrending of the data). We followed the approach described by Stello et al. (2011b) for merging the quarters, and we discarded the stars that they classified as seismic non-members in their study. We also note that, according to their classification based on the color–magnitude diagram (CMD), the cluster stars in NGC 6811 are all He-burning stars, with one star appearing to be in a late He-core burning phase toward the asymptotic giant branch (AGB).

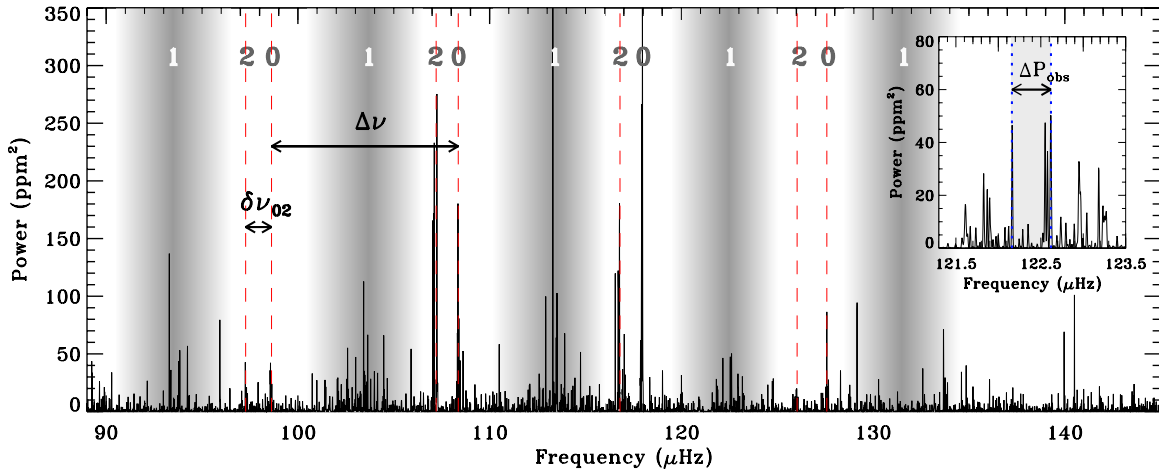


Figure 1. Power spectrum of KIC 2436593, a typical low-luminosity RGB star belonging to NGC 6791. Mode identification for some of the peaks is shown. Shaded regions in gray indicate mixed $\ell = 1$ modes. $\Delta\nu$ and $\delta\nu_{02}$ are also marked. The inset shows the detail of one of the $\ell = 1$ shaded regions, where an indication of the observed period spacing, ΔP_{obs} , is shown.

(A color version of this figure is available in the online journal.)

For the present study we developed the Asymptotic Analysis of Red Giants (AARG) code, with the purpose of deriving asymptotic parameters for p modes and observed period spacings for mixed modes in red giant stars. AARG performs a multi-step analysis in a semi-interactive way, allowing the user to follow the results at each step and make any necessary corrections. We calculated background-corrected power spectra and measured $\Delta\nu$ using the SYD pipeline (Huber et al. 2009). As a check we compared $\Delta\nu$ values with those derived using other methods (Mosser & Appourchaux 2009; Mathur et al. 2010; Hekker et al. 2010; Kallinger et al. 2010a) and found good agreement. We focus first on the analysis of p modes, which represents the main part of the work, leaving the discussion of period spacings to Section 5.

The analysis of p modes, performed for each star, was done in three steps: (1) collapse the échelle diagram using the measured $\Delta\nu$; (2) identify the centroids ν_0 , ν_1 , ν_2 of the $\ell = 0, 1, 2$ ridges by fitting three Lorentzian profiles to the collapsed échelle diagram, which gives the small spacings $\delta\nu_{02}$ and $\delta\nu_{01}$ and ϵ (see the next paragraph and Huber et al. 2010); and (3) simulate 500 power spectra by perturbing the observed power spectrum of the star according to a χ^2 statistics with 2 degrees of freedom, perform the first two steps of the analysis for each simulation in order to derive a new set of asymptotic parameters, and evaluate their uncertainties by computing a robust rms of the results. Figure 2 shows an example of a collapsed échelle diagram obtained with the AARG code. The centroids of the ridges $\ell = 0, 1$, and 2 are marked by dotted lines, while the Lorentzian profiles used to fit the different ridges are shown with thick solid lines (red, blue, and green, respectively).

We now describe step (2) in slightly more detail. AARG requires an initial guess of ϵ for each star, given by manually marking the position of the $\ell = 0$ peak in the collapsed échelle diagram. This is followed by a Lorentzian fit to obtain the centroid, ν_0 . According to the values shown by Huber et al. (2010) and White et al. (2011b), we expected to have $0.5 < \epsilon < 1.5$ for red giants with $\Delta\nu < 15 \mu\text{Hz}$. We therefore either added or subtracted 1 to the measured ϵ to ensure that it would fall within this range (see also Mosser et al. 2011b; White et al. 2011a, for further discussion of the position of the centroids and the ϵ diagrams).

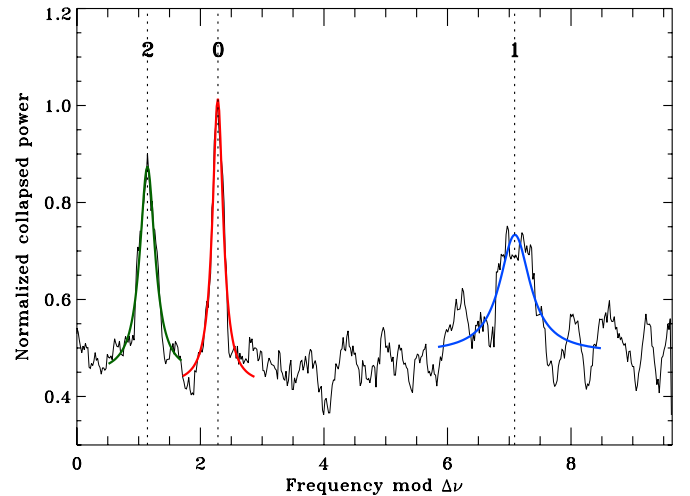


Figure 2. Collapsed échelle diagram of KIC 2436593. The identification of the ridges $\ell = 0, 1$, and 2 is shown, together with their Lorentzian fits (red, blue, and green solid lines, respectively).

(A color version of this figure is available in the online journal.)

Next, AARG makes a first guess for the centroid ν_2 of the $\ell = 2$ peak by adopting an empirical relation $\nu_0 - \nu_2 \equiv \delta\nu_{02} = c\Delta\nu$, where c is small. Although the relation has a slight mass dependence (see Montalbán et al. 2010), using a fixed value of $c = 0.123$ offered a reliable first guess for every star in our sample (note that our value is very close to the one measured by Bedding et al. 2010). As for ν_0 , a Lorentzian fit centered on the first guess for the $\ell = 2$ ridge position provides the final value of the centroid ν_2 and hence also $\delta\nu_{02}$. The search for the $\ell = 1$ peak is performed automatically by finding the maximum in the regions of the collapsed échelle diagram laying outside the $\ell = 0, 2$ peaks. A third Lorentzian fit is then performed, providing the centroid ν_1 , which gives $\delta\nu_{01} = \nu_0 + \Delta\nu/2 - \nu_1$ according to the convention by Bedding et al. (2010). For a few stars (~ 10) our method did not perform well. This was mainly caused by partly overlapping $\ell = 0, 2$ peaks (especially in NGC 6811 because of the higher mass of its stars) and strongly affected $\ell = 1$ peaks due to mixed modes. These stars were

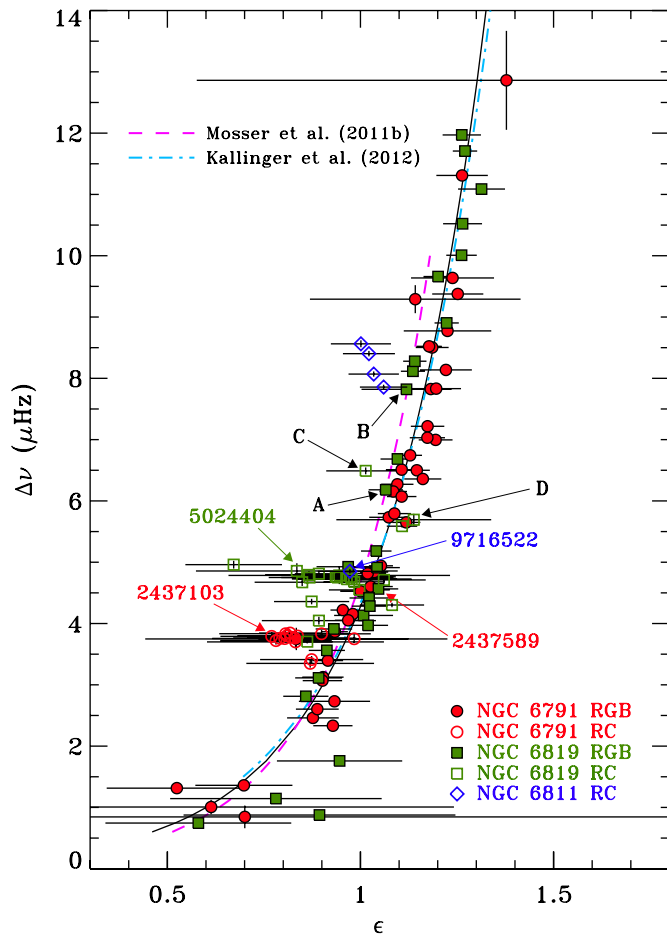


Figure 3. ϵ diagram for the clusters NGC 6791 (red circles), NGC 6811 (blue diamonds), and NGC 6819 (green squares). Open symbols represent RC stars, while filled symbols are RGB stars. 1σ uncertainties are displayed for both quantities. A fit to the RGB stars of all the clusters using Equation (6) is added (solid black line), as well as the one from Mosser et al. (2011b; dashed purple line) and Kallinger et al. (2012; dot-dashed cyan line). Stars marked with labels and arrows represent special cases that are discussed in Section 5.2.

(A color version of this figure is available in the online journal.)

manually analyzed afterward. We could successfully derive the asymptotic parameters of p modes for a total of 115 stars: 60 for NGC 6791, 5 for NGC 6811, and 50 for NGC 6819.

4. RESULTS

4.1. ϵ Diagram

The ϵ term of Equation (1) was shown to be highly correlated with $\Delta\nu$ for red giant stars (Huber et al. 2010; Mosser et al. 2011b). The ϵ diagram is shown in Figure 3 for the clusters NGC 6791, NGC 6811, and NGC 6819, where 1σ error bars were derived by means of Equation (1). We note that the RC stars (identified from the CMDs by Stello et al. (2011b) but adjusted for a few stars based on our analysis of the period spacing, presented in Section 5) form distinct groups with slightly lower ϵ than the RGB stars at $\Delta\nu \simeq 3.7 \mu\text{Hz}$ for NGC 6791, $\Delta\nu \simeq 8 \mu\text{Hz}$ for NGC 6811, and $\Delta\nu \simeq 4.8 \mu\text{Hz}$ for NGC 6819. In particular, we measured a weighted average of ϵ for clump stars and RGB stars in the same $\Delta\nu$ range of RC stars and found them to be $\langle\epsilon^{\text{RC}}\rangle = 0.829 \pm 0.031$ and $\langle\epsilon^{\text{RGB}}\rangle = 0.915 \pm 0.039$ for NGC 6791 and $\langle\epsilon^{\text{RC}}\rangle = 0.970 \pm 0.018$ and $\langle\epsilon^{\text{RGB}}\rangle = 1.015 \pm 0.017$ for NGC 6819. In both cases, $\langle\epsilon^{\text{RC}}\rangle$ appears to be significantly different from $\langle\epsilon^{\text{RGB}}\rangle$. This is in

good agreement with Bedding et al. (2011) and Kallinger et al. (2012). Although a lower mass of RC stars can result in lower $\Delta\nu$ and hence lower ϵ , one should note that this effect alone cannot explain the observed difference in ϵ between RC and RGB stars of similar $\Delta\nu$ (see Miglio et al. 2012, for a detailed study about the mass difference between the RGB and RC stars). The difference in evolutionary state also needs to be taken into account to fully explain the observed difference in phase shift (Kallinger et al. 2012).

A least-squares fit to the RGB stars of the clusters was computed, using the log-relation

$$\epsilon = A + B \log \Delta\nu, \quad (6)$$

adopted by Mosser et al. (2011b). Since the fits computed to the RGB stars of NGC 6791 and NGC 6819 are not significantly different, we give the result for all the RGB stars in our sample, providing single values for the coefficients A and B . The result is shown as a solid black line in Figure 3, where $A = 0.601 \pm 0.025$ and $B = 0.632 \pm 0.032$. The fit from Mosser et al. (2011b), who used a five-month data set, is added for comparison and plotted in the $\Delta\nu$ range $[0.6, 10] \mu\text{Hz}$ covered in that study (dashed purple line). The fit by Kallinger et al. (2012), based on more than 900 field red giants observed by *Kepler* for about 600 days, is almost indistinguishable from ours (dot-dashed cyan line). We also tested a power-law form of the ϵ - $\Delta\nu$ relation and found the χ^2 to be very similar to that derived from Equation (6). The log-relation was finally chosen to allow a direct comparison with the results by Mosser et al. (2011b) and Kallinger et al. (2012).

Lastly, we note that the uncertainties on $\Delta\nu$, and hence on ϵ , become quite large for values of $\Delta\nu$ below $<2 \mu\text{Hz}$ due to the limited frequency resolution and a small number of orders observed. For the star with the highest $\Delta\nu$, the large uncertainty is caused by the low signal-to-noise (S/N) level, due to its low oscillation amplitude.

4.2. C-D Diagrams

In the Christensen-Dalsgaard (C-D) diagram one plots the small spacing $\delta\nu_{02}$ versus the large spacing $\Delta\nu$ (Christensen-Dalsgaard 1984), which for MS stars enables one to discriminate stars of different age and mass. A new version of the C-D diagram proposed by Mazumdar (2005) and by Montalbán et al. (2010) for MS and RGB stars, respectively, is constructed by considering $\delta\nu_{01}$ instead of $\delta\nu_{02}$ (see also White et al. 2011a). It has been shown that for red giants the C-D diagrams cannot be used to investigate age (White et al. 2011b) but that it is still useful to discriminate mass (e.g., see Bedding et al. 2010; Huber et al. 2010; Montalbán et al. 2010; Kallinger et al. 2012). The results for both $\delta\nu_{02}$ and $\delta\nu_{01}$ are shown in Figures 4(a) and (c), for the three clusters. As before, open symbols represent RC stars, while filled symbols are RGB stars. As a first approximation, we represent the relation between $\delta\nu_{02}$ and $\Delta\nu$ by the linear relation $\delta\nu_{02} = a_{02} + b_{02}\Delta\nu$, which we fitted with a standard least-squares method to the RGB stars. The results are shown in Figure 4 with a dashed red line for NGC 6791 and a dot-dashed green line for NGC 6819. Their equations are given by

$$\delta\nu_{02}^{(6791)} = (0.121 \pm 0.003) \Delta\nu + (0.035 \pm 0.012) \mu\text{Hz} \quad (7)$$

and

$$\delta\nu_{02}^{(6819)} = (0.114 \pm 0.003) \Delta\nu + (0.019 \pm 0.012) \mu\text{Hz}. \quad (8)$$

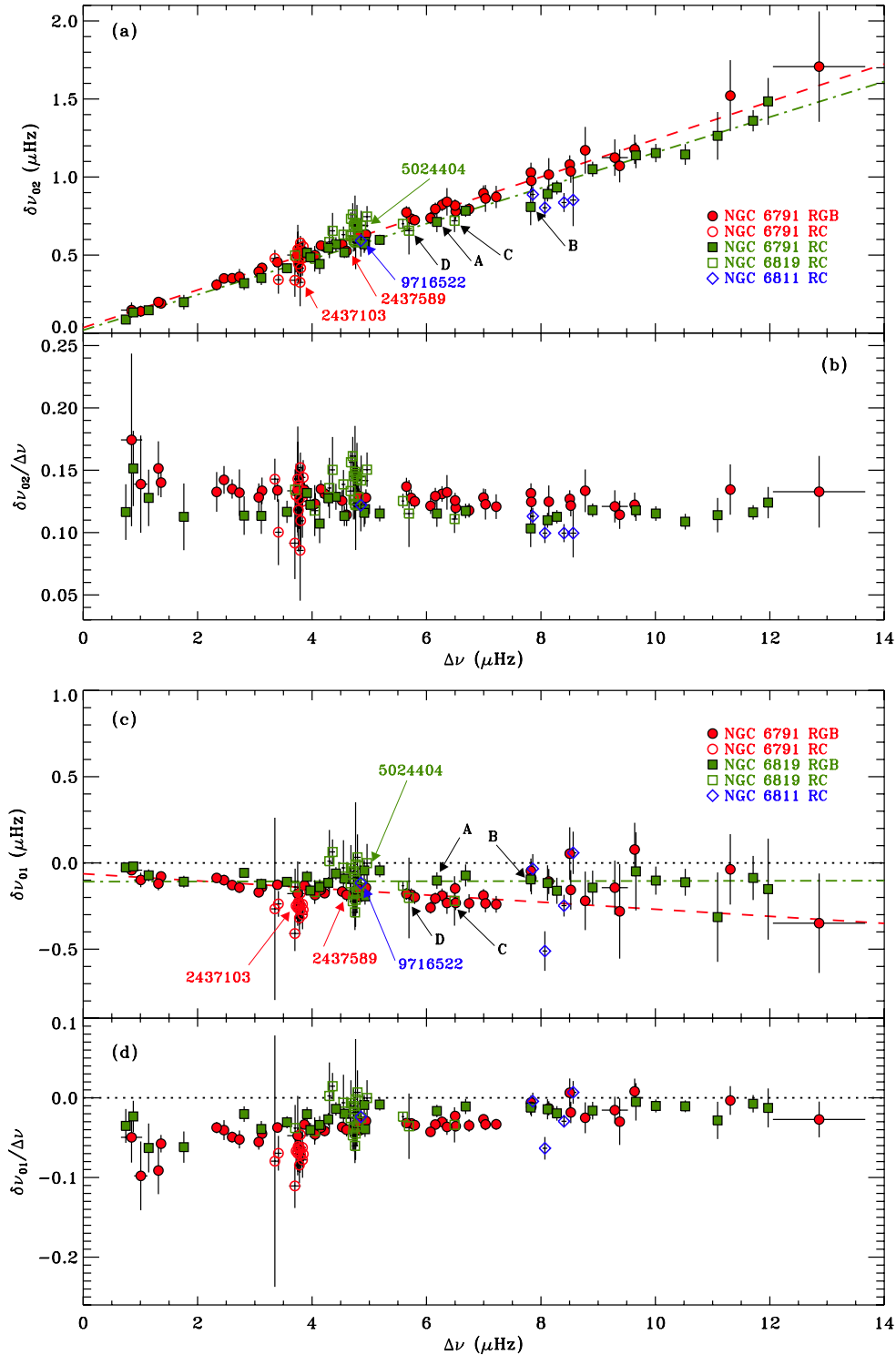


Figure 4. (a) and (c) C-D diagrams of the small spacings $\delta\nu_{02}$ and $\delta\nu_{01}$ for the clusters NGC 6791 (red circles), NGC 6811 (blue diamonds), and NGC 6819 (green squares). Open symbols represent RC stars, while filled symbols are RGB stars. Error bars show 1σ uncertainties. The linear fits to the RGB stars are shown for both NGC 6791 (dashed red line) and NGC 6819 (dot-dashed green line). Stars marked with labels represent special cases that are discussed in Section 5.2. (b) and (d) Modified C-D diagrams of the ratios $\delta\nu_{02}/\Delta\nu$ and $\delta\nu_{01}/\Delta\nu$ with the same notation adopted for the upper panels.

(A color version of this figure is available in the online journal.)

Only error bars on $\delta\nu_{02}$ were considered for the fits, but the results obtained by including uncertainties on both quantities were indistinguishable from the ones presented here. The coefficients of the $\delta\nu_{02}$ - $\Delta\nu$ relation estimated from our fit agree within a few percent with those derived by Kallinger et al. (2012) for field stars.

The typical mass for an RGB star, M_{RGB} , is expected to be different for each cluster but about the same within a given cluster. For cluster RGB stars we therefore have a much tighter constraint on the stellar mass than for field stars. Basu et al. (2011) found $M_{6791} = 1.20 \pm 0.01 M_{\odot}$ and $M_{6819} = 1.68 \pm 0.03 M_{\odot}$ as the averages for the RGB stars, which were

derived using grids of stellar models that incorporated scaling relations for ν_{\max} and $\Delta\nu$. We refer to Miglio et al. (2012) for further discussion about the mass estimates for these stars. Following the theoretical work by Montalbán et al. (2010), who showed that $\delta\nu_{02}$ depends on mass, we relate the difference in the slopes, b_{02} , in Equations (7) and (8) to the difference in M_{RGB} . Assuming the linear relation

$$b_{02} = \alpha_{02} + \beta_{02} \left(\frac{M_{\text{RGB}}}{M_{\odot}} \right), \quad (9)$$

we obtain $\alpha_{02} = 0.138 \pm 0.012$ and $\beta_{02} = -0.014 \pm 0.008$ by solving the system of two equations (one for each cluster).

As done for $\delta\nu_{02}$, we fitted a linear relation $\delta\nu_{01} = a_{01} + b_{01}\Delta\nu$ to the RGB stars of NGC 6791 and NGC 6819. The linear trends are shown in Figure 4(c) with the same notation as Figure 4(a), and the results are

$$\delta\nu_{01}^{(6791)} = -(0.021 \pm 0.003) \Delta\nu - (0.063 \pm 0.011) \mu\text{Hz} \quad (10)$$

and

$$\delta\nu_{01}^{(6819)} = (0.000 \pm 0.003) \Delta\nu - (0.109 \pm 0.012) \mu\text{Hz}. \quad (11)$$

Once again, the uncertainties are quite similar for the two clusters. Like $\delta\nu_{02}$, we also see a mass dependence on $\delta\nu_{01}$ for the RGB stars. But unlike $\delta\nu_{02}$, the trend appears to go in the opposite direction, with higher $\delta\nu_{01}$ for higher masses. This is in qualitative agreement with the theoretical results by Montalbán et al. (2010), whose Figure 5(b) shows a slight increase in $\delta\nu_{01}$ for increasing mass along the RGB. As for $\delta\nu_{02}$, we relate the slopes b_{01} in Equations (10) and (11) to M_{RGB} , assuming the linear relation

$$b_{01} = \alpha_{01} + \beta_{01} \left(\frac{M_{\text{RGB}}}{M_{\odot}} \right), \quad (12)$$

and find $\alpha_{01} = -0.073 \pm 0.012$ and $\beta_{01} = 0.044 \pm 0.008$. We find that $|\beta_{01}| \simeq 3|\beta_{02}|$; hence, it appears that $\delta\nu_{01}$ is more sensitive to mass than $\delta\nu_{02}$ by about a factor of three. But at this stage we would caution against overinterpretation of this result as further theoretical investigations are required to fully understand how $\delta\nu_{01}$ depends on the fundamental parameters and internal structure of red giants (Section 4.3).

Figures 4(b) and (d) show the so-called modified C-D diagrams, which plot the relative ratios $\delta\nu_{02}/\Delta\nu$ and $\delta\nu_{01}/\Delta\nu$. The reason for considering the ratio $\delta\nu_{0\ell}/\Delta\nu$ is that models show it to be less sensitive to surface layer effects (e.g., see White et al. 2011a) and that the small spacings $\delta\nu_{0\ell}$ approximatively scale with $\Delta\nu$. Our results appear to be in agreement with previous results on red giants (Bedding et al. 2010; Huber et al. 2010; Mosser et al. 2011b; Kallinger et al. 2012) and with the theoretical studies by Montalbán et al. (2010).

4.3. The Small Spacings of Red Clump Stars

It is interesting to compare the average small spacings for the RC stars relative to the RGB stars in each cluster. In the following we denote this quantity $\Delta\langle\delta\nu_{0\ell}\rangle \equiv \langle\delta\nu_{0\ell}^{\text{RC}}\rangle - \langle\delta\nu_{0\ell}^{\text{RGB}}\rangle$. It is evident in all four panels of Figure 4, but slightly more so in Figures 4(b) and (d), that the RC stars on average show different small spacings than RGB stars of similar $\Delta\nu$. We will first discuss $\Delta\langle\delta\nu_{02}\rangle$.

For NGC 6819 $\Delta\langle\delta\nu_{02}\rangle = 0.112 \pm 0.016 \mu\text{Hz}$, while for NGC 6791 we have $\Delta\langle\delta\nu_{02}\rangle = 0.012 \pm 0.021 \mu\text{Hz}$. Given the

relation between $\delta\nu_{02}$ and mass for RGB stars (Section 4.2), one might speculate that a similar relation would exist for RC stars. However, we note that $\Delta\langle\delta\nu_{02}\rangle$ for NGC 6819 is about twice as large as the difference in $\delta\nu_{02}$ between the two RGB populations in NGC 6791 and NGC 6819 at a similar $\Delta\nu$. Hence, if we applied the relation in Equation (9) to the RC stars, we would find that the RC stars in NGC 6819 have a mass of about $0.7 M_{\odot}$ (corresponding to a mass loss of about $1 M_{\odot}$), in stark disagreement with the results by Miglio et al. (2012), who found $\Delta\langle M \rangle = -0.03 \pm 0.04$. Hence, there is certainly something else dominating the different values of $\Delta\langle\delta\nu_{02}\rangle$ we see for the two clusters.

Turning our attention to the other small spacing, we have $\Delta\langle\delta\nu_{01}\rangle = 0.004 \pm 0.025 \mu\text{Hz}$ for NGC 6819 and $\Delta\langle\delta\nu_{01}\rangle = -0.113 \pm 0.020 \mu\text{Hz}$ for NGC 6791. Hence, we see that $\Delta\langle\delta\nu_{01}\rangle_{6791} < \Delta\langle\delta\nu_{01}\rangle_{6819}$, which was also the case for $\Delta\langle\delta\nu_{02}\rangle$. We recall that the mass dependencies of $\delta\nu_{02}$ and $\delta\nu_{01}$ were opposite for the RGB, in both observations (Section 4.2) and models (Montalbán et al. 2010). Hence, we would also expect an opposite trend for $\Delta\langle\delta\nu_{01}\rangle$ ($\Delta\langle\delta\nu_{01}\rangle_{6791} > \Delta\langle\delta\nu_{01}\rangle_{6819}$). The fact that we do not observe this is further evidence that a simple relation with mass alone cannot explain the observed differences in small spacings between RC and RGB stars.

A possible explanation is the internal structural changes of the stars that occur during the He-flash phase (Bildsten et al. 2012) between the tip of the RGB and the RC. These changes could be significantly different for stars of different masses ($M_{6791} = 1.20 \pm 0.01 M_{\odot}$ and $M_{6819} = 1.68 \pm 0.03 M_{\odot}$; Basu et al. 2011), composition ($[\text{Fe}/\text{H}]_{6791} = 0.29 \pm 0.03$ (random) ± 0.07 (systematic), Brogaard et al. 2011; $[\text{Fe}/\text{H}]_{6819} = 0.09 \pm 0.03$, Bragaglia et al. 2001), and rotation rates (Meibom et al. 2011). Further investigation requires modeling of both the RGB and RC stars in these clusters.

The dependence of $\delta\nu_{01}$ on stellar properties was investigated by Montalbán et al. (2010) using stellar models covering $0.7\text{--}2.3 M_{\odot}$ on the RGB and $2.5\text{--}5.0 M_{\odot}$ in the He-core burning phase. They found that small values of $\delta\nu_{01}$ were predominantly seen among RGB models, and we would therefore expect the RC stars to show larger $\delta\nu_{01}$ on average, which is contrary to what we observe for NGC 6791. However, we note that all the He-core burning models in the Montalbán et al. (2010) sample were more massive than the stars in the two clusters considered here, and a direct comparison is therefore not possible. The physical cause of a lower value of $\delta\nu_{01}$ was not firmly established by Montalbán et al. (2010), but they argued that there was a tendency for low $\delta\nu_{01}$ values in models where the inner turning point of the $\ell = 1$ modes was well inside the convective envelope, corresponding to stars with deep convective envelopes. Clearly, these issues deserve further study.

4.4. Ensemble échelle Diagrams

Following Huber et al. (2010), we computed the so-called ensemble échelle diagrams for both NGC 6791 and NGC 6819. When dealing with a large number of stars, ensemble échelle diagrams are very helpful for studying the evolution of features such as ridge width and position. In particular, the measurement of the average position of the $\ell = 3$ ridge becomes possible also when low S/N in the power spectra does not allow one to make a clear detection of the corresponding peak in a single star. The results are shown in Figures 5(a) and (c), where the stars are numbered by increasing $\Delta\nu$. Each row in the plot represents the collapsed échelle diagram of a single star using the large separation adopted in the analysis and shifted in order to have

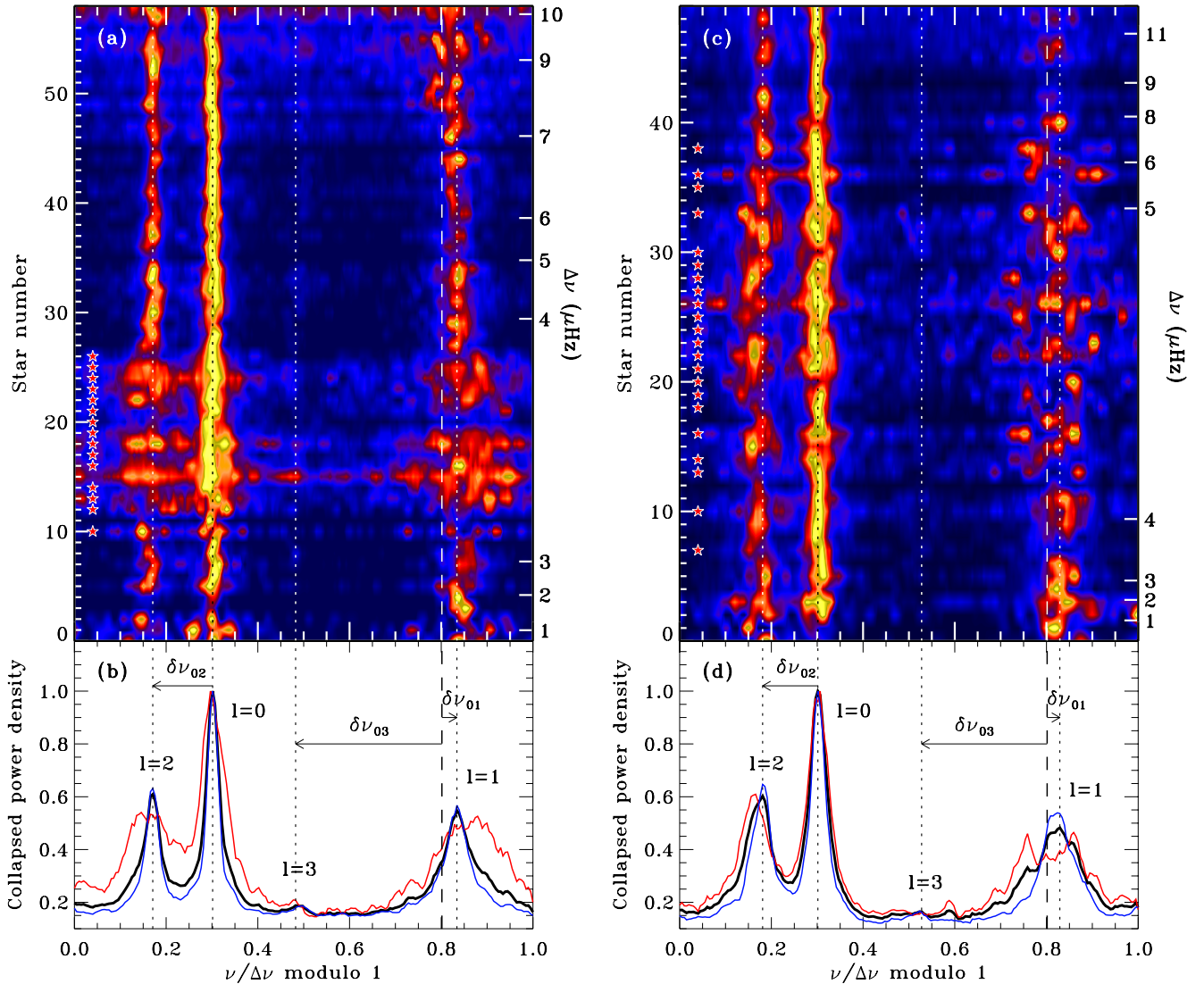


Figure 5. (a) and (c) Ensemble échelle diagrams of the clusters NGC 6791 and NGC 6819, respectively, where $\ell = 0$ centroids were aligned by shifting the $\ell = 0$ ridge of each star to align with $(\nu/\Delta\nu \bmod 1) = 0.3$. The number of the stars, ordered by increasing $\Delta\nu$, is shown on the left coordinate, and the corresponding $\Delta\nu$ is shown on the right axis. Red star symbols mark the clump stars identified in the clusters. Note that each row corresponds to the collapsed échelle of one star, normalized to unity. (b) and (d) Diagrams showing panels (a), (c) collapsed over the entire range of $\Delta\nu$ (thick black line) normalized to unity. Results for RC stars in red and RGB stars in blue are also shown. Ridge identifications and definitions of small separations are indicated. In both panels, the dotted lines represent the centroids of the $\ell = 0, 1, 2$, and 3 ridges, while the dashed line is the position of the midpoint of two adjacent $\ell = 0$ modes.

(A color version of this figure is available in the online journal.)

the $\ell = 0$ ridge fall on $(\nu/\Delta\nu \bmod 1) = 0.3$ (see also the discussion by Stello 2011, Section 2). The RC stars (red star symbol) clearly show strong broadening of the $\ell = 1$ and 2 ridges. We see that even the $\ell = 0$ ridge appears broader for RC stars in both clusters.

The result of collapsing the ensemble échelle over the entire sample of stars is shown in Figures 5(b) and (d) (thick black line). Results for RC stars (red line) and RGB stars (blue line) are also plotted for both clusters. The presence of an $\ell = 3$ peak becomes evident for NGC 6791, while for NGC 6819 a hint of $\ell = 3$ is visible only for the RGB stars. For NGC 6791, the $\ell = 3$ hump seems to arise from several stars, particularly those with $\Delta\nu < 7 \mu\text{Hz}$, as visible from Figure 5(a). The position of the marked $\ell = 3$ peaks of the two clusters, and hence their average small spacings $\delta\nu_{03}$, are in agreement with the results of Bedding et al. (2010), Huber et al. (2010), Mosser et al. (2011b), and Kallinger et al. (2012).

It is noticeable that the $\ell = 1, 2$ ridges move away from the $\ell = 0$ ridge as the stars evolve from H-shell to He-core burning red giants, a result that was already discussed by Huber et al. (2010). We also note that the hump visible in Figure 5(d), on the left slope of the $\ell = 1$ peak (red line), is caused by only two stars having strong peaks that occur at $(\nu/\Delta\nu \bmod 1) \simeq 0.7$ and this is therefore not an indication of a general feature. Referring to the effect on $\delta\nu_{01}$ discussed in Section 4.3, we notice that the $\ell = 1$ ridge of the RC stars of NGC 6791 (Figure 5(a)) is shifted toward the right-hand side of the diagram, i.e., toward lower values of the small spacing, while this shift is not apparent in NGC 6819 (Figure 5(c)).

4.5. Mode Linewidths

Measuring the linewidths of p modes and studying how they correlate to the fundamental stellar properties has important

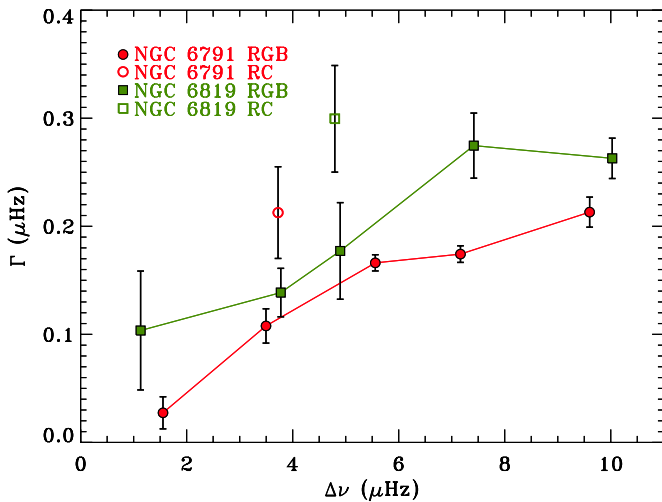


Figure 6. FWHM of the $\ell = 0$ ridge as a function of $\Delta\nu$ for RGB stars in NGC 6791 (filled red circles) and NGC 6819 (filled green squares). Each point represents the average of values within a subset of stars with similar $\Delta\nu$. The error bars are the 1σ uncertainties on the mean for each subset. Open symbols at $\Delta\nu \simeq 3.7 \mu\text{Hz}$ and $\Delta\nu \simeq 4.8 \mu\text{Hz}$ represent the measurements for the subsets of RC stars.

(A color version of this figure is available in the online journal.)

consequences for the understanding of the damped nature of solar-like oscillations. In fact, the physics responsible for the damping mechanism that acts in the convective envelope of low-mass stars is not yet fully understood (e.g., see Houdek et al. 1999; Dupret et al. 2009; Belkacem et al. 2012).

In the present work we provide estimates of the linewidths of radial modes derived through the AARG code. In particular, the widths of the ridges in the collapsed échelle diagrams (Figures 5(b) and (d)) give a rough estimate of the mode linewidths. Figure 6 shows the FWHM for the $\ell = 0$ ridge from the Lorentzian fit to the corresponding peak in the collapsed échelle diagram, for the RGB stars of both NGC 6791 and NGC 6819. Each point is the average from a subset of stars sorted in bins of $\Delta\nu$, while the overlaid error bars are 1σ uncertainties on the mean for each bin. The open symbols at $\Delta\nu \simeq 3.7 \mu\text{Hz}$ and $\Delta\nu \simeq 4.8 \mu\text{Hz}$ show our measurements for the RC stars. We see a clear increasing trend when moving to higher $\Delta\nu$, a result that was already apparent from the analysis by Huber et al. (2010) of field red giants, despite the shorter data set that was available (see also Kallinger et al. 2012, who obtained a similar result by using a different method). This increasing trend is also visible in Figures 5(a) and (c), in that the scaled width $\nu/\Delta\nu$ of the $\ell = 0$ ridge at low $\Delta\nu$ is about the same as that at high $\Delta\nu$. In Figure 6 we also notice a systematic difference between the ridge widths of the two clusters, a feature that is already visible from the collapsed échelle diagrams of Figures 5(b) and (d).

To see whether the difference in ridge width between the two clusters and between stars with different $\Delta\nu$ arises from the difference in temperature of the stars as contemplated by Chaplin et al. (2009), Baudin et al. (2011), Appourchaux et al. (2012), and Belkacem et al. (2012), we plot our measurements of FWHM as a function of T_{eff} in a log–log scale in Figure 7. This shows indeed that all the cluster stars follow an almost common trend, which supports that the observed difference in ridge width largely follows the difference in temperature. We also show the linewidth measurements of a sample of main-sequence (MS)

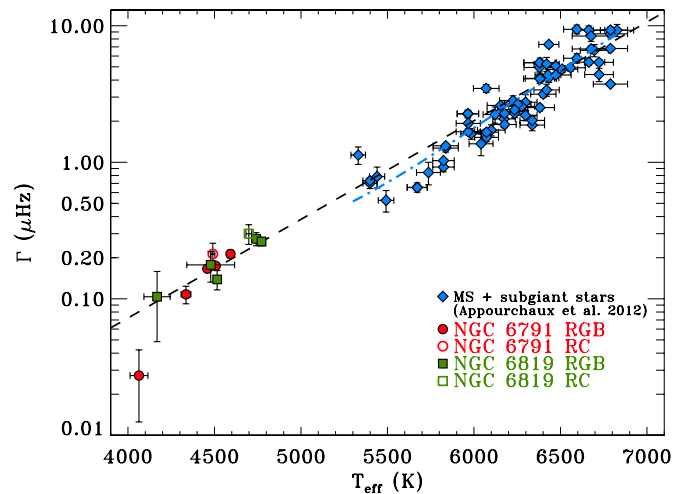


Figure 7. FWHM of the $\ell = 0$ ridge plotted against T_{eff} for the stars of NGC 6791 (red circles) and NGC 6819 (green squares). Also shown are measured linewidths for MS and subgiant field stars (blue diamonds) from Appourchaux et al. (2012). Each cluster point represents the same subset of stars plotted in Figure 6. The error bars are the 1σ uncertainties on the mean for each subset. The fit to the MS and subgiant stars taken from Appourchaux et al. (2012) is also shown (dot-dashed blue line). The dashed black line shows an exponential fit (Equation (13)) to all stars.

(A color version of this figure is available in the online journal.)

and subgiant stars (blue diamonds) from Appourchaux et al. (2012), where we have taken temperatures from Casagrande et al. (2006, 2010). It is remarkable how well all the stars are aligned in Figure 7. Note that our measure of the ridge width only provides an upper limit to the “true” mode linewidths because of the slight curvature of the ridges in the échelle diagram. The fit to the linewidths across all stars is represented by an exponential function

$$\Gamma = \Gamma_0 \exp\left(\frac{T_{\text{eff}} - 5777 \text{ K}}{T_0}\right) \mu\text{Hz}, \quad (13)$$

where $\Gamma_0 = 1.39 \pm 0.10 \mu\text{Hz}$ and $T_0 = 601 \pm 3 \text{ K}$ (dashed black line). A detailed study using linewidths found by direct mode fitting (peak bagging) of MS and red giant stars (e.g., Chaplin et al. 2009; Baudin et al. 2011; Appourchaux et al. 2012) goes beyond the scope of this work. The power-law fit with a background component proposed by Appourchaux et al. (2012) is here added for comparison in its range of validity (5300–6800 K; dot-dashed blue line). However, we can conclude that our measurements, combined with *Kepler* results on MS and subgiant stars, follow a single exponential trend with temperature.

5. MIXED MODES

Mixed modes have the great advantage of being sensitive to the core structure, while at the same time being observable at the surface. They were recently used as a way to successfully distinguish between RC and RGB stars (Bedding et al. 2011; Mosser et al. 2011a). Although their amplitude is lower than of pure p modes (Mosser et al. 2012a), long data sets enable us to identify many of them due to their long lifetimes (Dupret et al. 2009). Even in cluster red giants, which are generally fainter than the *Kepler* field stars, we can detect many mixed $\ell = 1$ modes in the best cases. The main features of mixed modes relevant for the analysis presented in this work are discussed

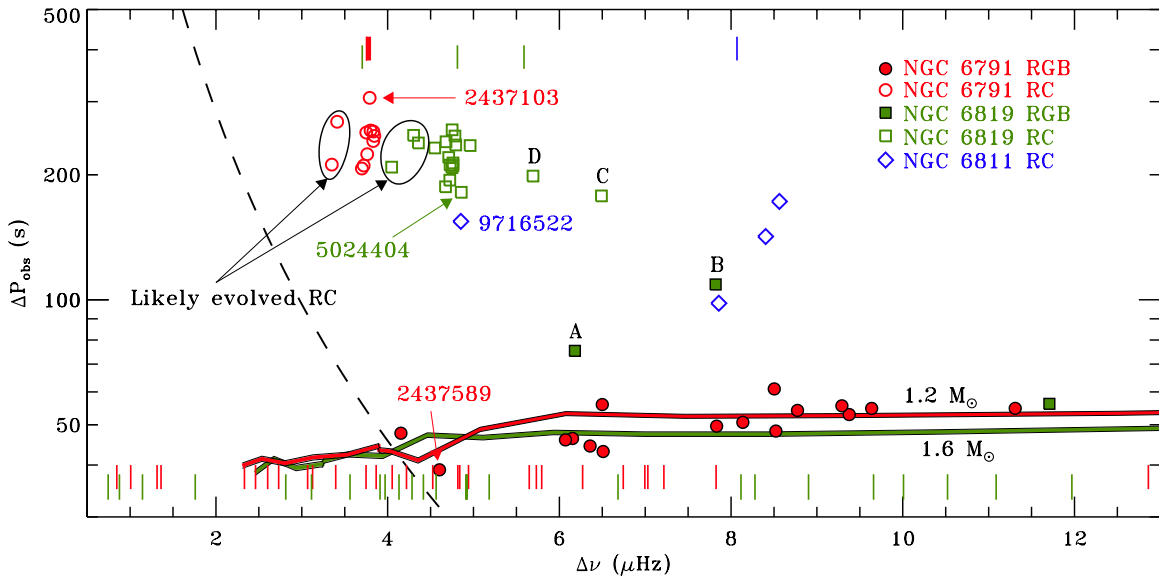


Figure 8. Period spacings of the three clusters NGC 6791 (red circles), NGC 6811 (blue diamonds), and NGC 6819 (green squares). Open symbols represent RC stars, while filled symbols are RGB stars. Tracks for $1.2 M_{\odot}$ (thick red line) and $1.6 M_{\odot}$ (thick green line), and $Z = 0.017$, are shown (White et al. 2011a). Tick marks drawn at the top (RC) and bottom (RGB) refer to stars that could not be identified with our period spacing analysis and are colored according to the notation adopted in the rest of the paper. The dashed black line represents the minimum period spacing one can measure with a 19-month-long time series. Special cases discussed in Section 5.2 and listed in Table 1 are marked.

(A color version of this figure is available in the online journal.)

in Section 5.1, while our results on their period spacings are described in Section 5.2.

5.1. Period Spacings of Mixed Dipole Modes

While p modes are equally spaced in frequency, pure g modes are approximately equally spaced in period, following the asymptotic relation (Tassoul 1980; Christensen-Dalsgaard 2011)

$$\Pi_{n\ell} = \frac{\Delta\Pi_0}{\sqrt{\ell(\ell+1)}} (n + \alpha). \quad (14)$$

Here, n and ℓ are the radial order and the angular degree of the mode, α is a small constant, and $\Delta\Pi_0$ is the period spacing, expressed as

$$\Delta\Pi_0 = 2\pi^2 \left(\int \frac{N}{r} dr \right)^{-1}. \quad (15)$$

The integral is taken over the cavity in which the g modes propagate, and N is the Brunt–Väisälä frequency. From Equation (14), the period spacing of dipole g modes is given by

$$\Delta P_g = \Delta\Pi_0 / \sqrt{2}, \quad (16)$$

which appears to be the most interesting quantity to investigate because of the strong coupling between p and g modes for $\ell = 1$ (Dupret et al. 2009; Montalbán et al. 2010; Stello 2011; Bedding 2011).

However, in contrast to the large separation for p modes, the period spacing of pure g modes, ΔP_g , cannot always be directly measured in red giants because all the non-radial modes are mixed in the red giant phase (Christensen-Dalsgaard 2011). Nevertheless, from recent studies it seems to be possible to infer Π_0 in some cases (see Bedding et al. 2011; Mosser et al. 2012b). Fortunately, we can readily measure the period spacing of the mixed modes, ΔP_{obs} , which can serve as a proxy for ΔP_g . ΔP_{obs} is lower than ΔP_g by about a factor of 0.6–0.8 (e.g., see Bedding et al. 2011; Mosser et al. 2012b).

5.2. $\Delta P_{\text{obs}} - \Delta\nu$ Diagram

As mentioned in Sections 1 and 3, AARG measures period spacings using the approach used by Bedding et al. (2011). As a first step, it modifies the power spectrum for each star by erasing the regions containing all the $\ell = 0, 2$ modes, whose positions come directly from our analysis of p modes (see Section 3). This new power spectrum shows only $\ell = 1$ mixed modes and possibly some low-amplitude $\ell = 3$ modes and is then expressed in period rather than frequency. The power spectrum of this power spectrum is then calculated, which is converted back into period. To obtain a first guess for the observed period spacing, a manual marking of the position of the excess of power is required. Finally, a Gaussian fit to the selected hump of power provides our measure of ΔP_{obs} .

We were able to measure ΔP_{obs} for a total of 53 stars in our sample: 27 from NGC 6791, 4 from NGC 6811, and 22 from NGC 6819. The results are shown in Figure 8, where RC and RGB stars are marked with open and filled symbols, respectively. The dashed black line is the limit set by the frequency resolution. Overlaid are theoretical tracks for $1.2 M_{\odot}$ and $1.6 M_{\odot}$ at near-solar metallicity ($Z = 0.017$), as calculated by White et al. (2011a), which are representative of the RGB stars of NGC 6791 and NGC 6819, respectively. Using stellar models, we verified that changing the metallicity over the range spanned by the two clusters has no significant effect on ΔP_g for RGB stars.

The tick marks at the top (RC) and bottom (RGB) represent stars for which the period spacing could not be clearly measured by our analysis, classified by Stello et al. (2011b) using the CMD. We see that the fraction of stars with measured period spacings is much higher for RC stars than for RGB stars even after taking into account the limit set by the frequency resolution. In particular, for NGC 6791 these fractions are $\sim 36\%$ (RGB) and $\sim 73\%$ (RC), while for NGC 6819 they are $\sim 10\%$ (RGB) and $\sim 86\%$ (RC). This could be explained by a weaker coupling between the p -mode and g -mode cavities for the RGB stars

Table 1
Overall Asteroseismic Parameters for Some Interesting Targets

KIC ID	NGC	Notes ^a	ν_{\max} (μHz)	$\Delta\nu$ (μHz)	ϵ	$\delta\nu_{02}$ (μHz)	$\delta\nu_{01}$ (μHz)	ΔP_{obs} (s)
5112361	6819	(A) Outlier	67.4 ± 1.4	6.181 ± 0.025	1.066 ± 0.044	0.712 ± 0.066	-0.102 ± 0.048	75
4937770	6819	(B) Outlier	93.8 ± 2.4	7.821 ± 0.076	1.119 ± 0.117	0.808 ± 0.117	-0.096 ± 0.070	109
5024414	6819	(C) Outlier	77.1 ± 1.5	6.490 ± 0.056	1.013 ± 0.103	0.720 ± 0.072	-0.220 ± 0.143	178
5024476	6819	(D) Outlier	67.0 ± 1.7	5.693 ± 0.097	1.138 ± 0.201	0.656 ± 0.152	-0.203 ± 0.234	199
2437103	6791	Misclassified CMD	29.7 ± 1.7	3.791 ± 0.064	0.770 ± 0.132	0.325 ± 0.153	-0.242 ± 0.114	306
2437589	6791	Misclassified CMD	46.5 ± 1.5	4.603 ± 0.026	1.026 ± 0.057	0.526 ± 0.042	-0.184 ± 0.038	39
5024404	6819	Misclassified CMD	48.8 ± 0.7	4.857 ± 0.126	0.835 ± 0.261	0.689 ± 0.095	-0.122 ± 0.072	182
9716522	6811	AGB	54.9 ± 1.0	4.852 ± 0.036	0.973 ± 0.084	0.592 ± 0.102	-0.116 ± 0.099	154
2436417	6791	Likely evolved RC	26.7 ± 0.8	3.412 ± 0.058	0.874 ± 0.133	0.342 ± 0.090	-0.237 ± 0.074	268
2437804	6791	Likely evolved RC	26.5 ± 1.6	3.350 ± 0.070	0.870 ± 0.165	0.478 ± 0.054	-0.266 ± 0.529	212
5024601	6819	Likely evolved RC	31.8 ± 1.7	3.704 ± 0.028	0.862 ± 0.065	0.498 ± 0.061	-0.140 ± 0.107	...
5112401	6819	Likely evolved RC	38.2 ± 0.7	4.047 ± 0.068	0.892 ± 0.158	0.476 ± 0.082	-0.169 ± 0.069	209
5112950	6819	Likely evolved RC	42.8 ± 1.3	4.302 ± 0.036	1.082 ± 0.083	0.584 ± 0.104	0.010 ± 0.181	249
5112974	6819	Likely evolved RC	41.7 ± 0.7	4.358 ± 0.045	0.874 ± 0.099	0.655 ± 0.115	0.064 ± 0.073	239

Note. ^a Target description as presented in Section 5.2.

(Dupret et al. 2009), which makes the resonances narrower in frequency, resulting in a smaller number of observable mixed modes.

5.3. Discussion of Special Cases

The stars labeled from A to D (KIC 5112361, KIC 4937770, KIC 5024414, and KIC 5024476) are outliers in the $\Delta P_{\text{obs}} - \Delta\nu$ diagram (Figure 8), while KIC 2437103, KIC 2437589, and KIC 5024404 have period spacings that imply a different stage of evolution to the one based on the CMDs (Stello et al. 2011b). KIC 9716522 represents a star on its way up toward the AGB, as already noted by Stello et al. (2011b) and now supported by our measurement of its high period spacing in agreement with that of other He-burning stars (Figure 8).

All these highlighted stars are also marked in Figures 3 and 4 and in the CMDs of Figure 9 (as derived by Stello et al. 2011b). We also list these stars in Table 1, together with all their asteroseismic parameters derived in this work. To further support the discussion presented below, we derived the masses of all stars near the RC in the CMD, including the outliers A–D and the stars that we have marked as “likely evolved RC” (Figure 8), which are also shown in Figure 9 and listed in Table 1. To estimate the masses, we use the scaling relation

$$\frac{M}{M_{\odot}} \simeq \left(\frac{\nu_{\max}}{\nu_{\max, \odot}} \right)^3 \left(\frac{\Delta\nu}{\Delta\nu_{\odot}} \right)^{-4} \left(\frac{T_{\text{eff}}}{T_{\text{eff}, \odot}} \right)^{3/2}, \quad (17)$$

where we adopted $\nu_{\max, \odot} = 3100 \mu\text{Hz}$, $\Delta\nu_{\odot} = 135 \mu\text{Hz}$, and $T_{\text{eff}, \odot} = 5777 \text{ K}$ (e.g., Miglio et al. 2012). The result is shown in Figure 10, with masses plotted against V magnitude and 1σ error bars overlaid. Blue lines represent the mean masses of RC stars (solid) and their 1σ uncertainties (dashed), as derived by Miglio et al. (2012) by adopting Equation (17). To provide corrected estimates of mass for clump stars, the $\Delta\nu$ scaling relation was corrected by 2.7% and 1.9% for NGC 6791 and NGC 6819, respectively, according to the study by Miglio et al. (2012).

We first discuss possible causes for the outliers, A–D. All four are potentially binary stars. Three of them (A, C, and D) are listed as binary stars in the radial velocity study by Hole et al. (2009), and the fourth star (B) shows a low oscillation amplitude, which could be indicative of a binary star, as argued

by Stello et al. (2011a). All four stars also appear relatively blue in the CMD (Figure 9). Stars A and B fall below the RC in the CMD and are in line with the rest of the RGB stars in Figures 3 and 4, suggesting that they are RGB stars with no clear sign of an abnormal mass (Figure 4(a) and (b)). This is confirmed by our estimate of their masses according to Equation (17; Figure 10), whose values are similar to the average mass of the RGB stars of NGC 6819 found by Basu et al. (2011; see Section 4.2). Binarity seems like the most plausible explanation for their $B - V$ colors being lower than the other RGB stars. However, their power spectra do not show oscillations from two components, and their higher-than-expected ΔP_{obs} is therefore difficult to explain. Perhaps it could come from a different core structure of these stars caused by binary interaction. We note that the stars do not seem to be the result of a merger event, given their apparently “normal” masses. In conclusion, stars A and B are most likely both binaries, with one component on the RGB, whose seismic signal we detect, and a fainter less-evolved component. Stars C and D have luminosities typical to that of the RC. Our measurement of ΔP_{obs} suggests that the stars indeed belong to the RC. The position of the stars in the sequence of He-core burning stars going from low mass (low $\Delta\nu$) to high mass (high $\Delta\nu$) spanned by the three clusters indicates that stars C and D have higher masses than the other RC stars in NGC 6819 (Figure 8). This is confirmed by our estimate of their masses (Figure 10). Our conclusion that they are high-mass RC stars is in good agreement with Rosvick & Vandenberg (1998), who mention these stars along with others with this position in the CMD to be potential descendants of blue stragglers, meaning that they experienced mass transfer and therefore have a component with a mass significantly higher than the cluster’s turnoff mass.

Concerning the next three stars, our period spacing analysis shows that KIC 2437103 ($\Delta P_{\text{obs}} = 306 \text{ s}$) is an RC star, KIC 2437589 ($\Delta P_{\text{obs}} = 39 \text{ s}$) is an RGB star (as argued by Miglio et al. 2012), and KIC 5024404 ($\Delta P_{\text{obs}} = 182 \text{ s}$) is an RC star. It seems that KIC 2437589 is an evolved blue straggler in the RGB phase, as suggested by Brogaard et al. (2012). This would explain its unusual position in the CMD (top panel of Figure 9) and is also supported by a mass of about $1.7 M_{\odot}$, as derived from Equation (17), greater than the mass of the other RGB stars of the cluster.

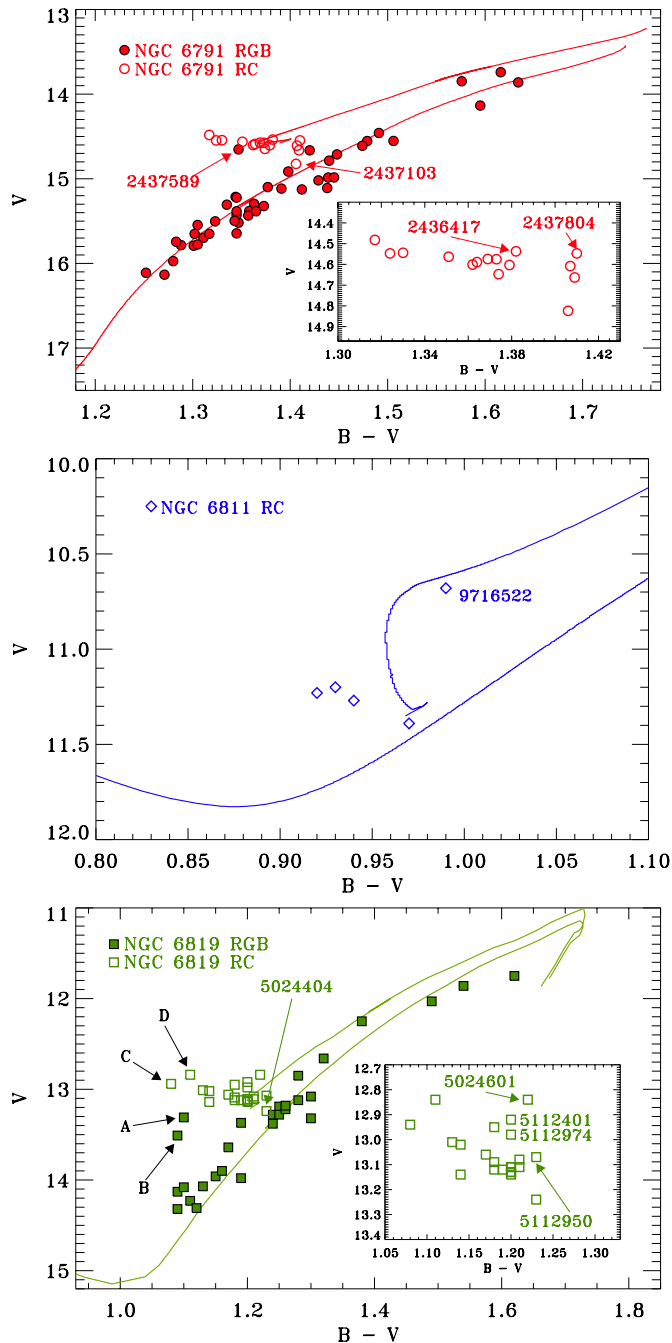


Figure 9. CMDs of the clusters NGC 6791 (top panel), NGC 6811 (middle panel), and NGC 6819 (bottom panel) as derived by Stello et al. (2011b). Both RC and RGB stars are shown, with open and filled symbols, respectively, according to the classification obtained by the membership study of Stello et al. (2011b) and our analysis of period spacings. Stars marked with labels represent special stars discussed in Section 5.2 and listed in Table 1. Isochrones are shown for all the clusters (solid lines; see Stello et al. 2011b, for details).

(A color version of this figure is available in the online journal.)

Lastly, six stars (two in NGC 6791 and four in NGC 6819) were found to be possible candidates for RC stars that are starting to evolve toward the AGB. We list them as “likely evolved RC” in Table 1. Our suggestion arises from our measurement of their ΔP_{obs} , which corresponds to that of RC stars, and from their $\Delta\nu$, which is lower than that of the other RC stars. Their masses (Figure 10) are similar to that of the average RC star, which, in combination with their lower $\Delta\nu$, confirms

that they have a radius significantly larger than the other RC stars.

6. SUMMARY AND CONCLUSION

The following provides a summary and conclusion on the main results of our analysis:

1. The fit of the $\epsilon-\Delta\nu$ relation to the RGB stars of our sample, computed using Equation (6), is compatible with the result derived by Mosser et al. (2011b), although it deviates slightly toward higher values of $\Delta\nu$, where our sample has more stars and benefits from longer observations. Our fit is almost indistinguishable from that by Kallinger et al. (2012), which was based on more than 900 field red giants observed for a similar length of time. Moreover, we tested a power-law form of the $\epsilon-\Delta\nu$ relation and found it to provide a very similar fit to that derived from Equation (6). Lastly, the average ϵ of clump stars appears to be significantly different from that of their RGB counterparts for both NGC 6791 and NGC 6819, a result in agreement with previous findings on field red giants.
2. The linear fits to the $\delta\nu_{02}-\Delta\nu$ relation for the RGB stars of our sample, given by Equations (7) and (8), appear to be compatible within a few percent with the results by Huber et al. (2010) and Kallinger et al. (2012) on field red giants. A direct measure of the mass dependence for the small spacings $\delta\nu_{02}$ and $\delta\nu_{01}$ is derived for the first time for cluster stars. The result indicates that $\delta\nu_{01}$ is about three times more sensitive to a mass difference than $\delta\nu_{02}$. The mass dependence for $\delta\nu_{02}$ is compatible with the results by Kallinger et al. (2012) on field red giants. Furthermore, both $\delta\nu_{02}$ and $\delta\nu_{01}$ show dependence on mass that is qualitatively in agreement with theoretical studies of red giant stars by Montalbán et al. (2010).
3. It is notable that the RC stars of NGC 6791 behave differently from those of NGC 6819 for both $\delta\nu_{02}$ and $\delta\nu_{01}$, as visible in Figures 4 and 5. We quantified this unexpected feature through the difference in $\langle\delta\nu_{0\ell}\rangle$ between RC and RGB stars, which is significantly different from one cluster to the other for both the small spacings. As discussed in Section 4.3, further theoretical investigations concerning differences on mass, metallicity, and rotation between the two cluster populations are required for the full interpretation of our results.
4. The positions of the ridges in the collapsed ensemble échelle diagrams (Figure 5) confirm the results from Huber et al. (2010), with the $\ell = 1$ and 2 ridges moving away from the $\ell = 0$ ridge as the stars evolve from the H-shell to the He-core burning phase. The position of the $\ell = 3$ ridges, and hence of the average small spacings $\delta\nu_{03}$ (Figures 5(b) and (d)), is also in agreement with results by Bedding et al. (2010), Huber et al. (2010), Mosser et al. (2011b), and Kallinger et al. (2012) on field red giants. The FWHM of the $\ell = 0$ ridge, which represents an upper limit of the mode linewidths, increases with $\Delta\nu$ for both NGC 6791 and NGC 6819, a result that agrees with the studies by Huber et al. (2010) and Kallinger et al. (2012) on field red giants. A systematic difference of the FWHM between the two clusters is shown, which is largely explained by the temperature dependence of mode linewidths (Figure 7), as discussed in Section 4.5. This result shows the first evidence for an exponential correlation between mode linewidth and temperature in red giants, which is consistent

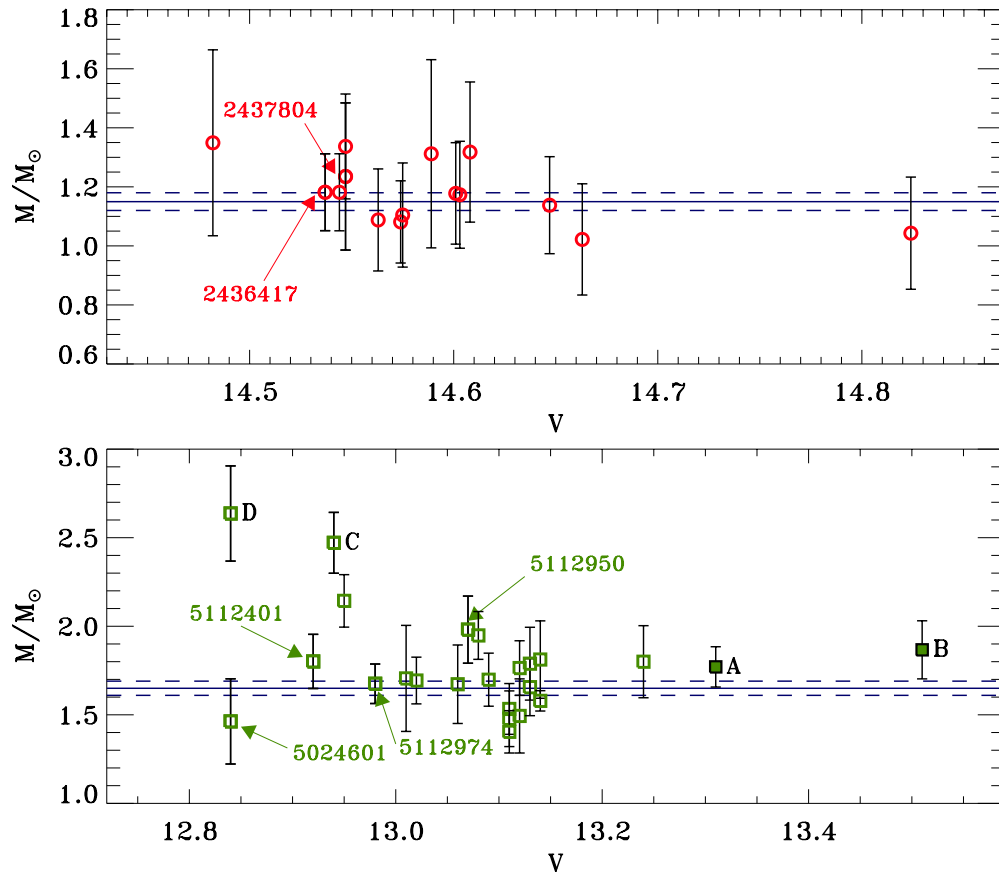


Figure 10. Mass of stars near the RC of NGC 6791 (red circles) and NGC 6819 (green squares) with applied correction in the $\Delta\nu$ scaling of 2.7% and 1.9%, respectively (see Miglio et al. 2012). Error bars show 1σ uncertainties derived according to Equation (17). Outlier stars A–D and “likely evolved RC” stars discussed in Section 5.2 and listed in Table 1 are marked. Blue lines represent the corrected mean masses of RC stars (solid) and their 1σ uncertainties (dashed) derived by Miglio et al. (2012). (A color version of this figure is available in the online journal.)

with extrapolating *Kepler* results for main-sequence and subgiant stars derived by Appourchaux et al. (2012).

- The analysis of period spacings using the method described by Bedding et al. (2011) allowed for the successful identification of almost half of the stars in our sample as either H-shell or He-core burning red giants. The fraction of RGB stars with clearly detectable period spacings is much lower than for RC stars, as seen in Figure 8, and could be due to a weaker coupling of the p - and g -mode cavities in RGB stars. We see a number of outliers in Figure 8 that require further investigations. It is likely that all of them are binaries, and two of them appear to be evolved blue stragglers, as suggested by Rosvick & Vandenberg (1998) and supported by their higher masses (Figure 10). In addition, our analysis confirms the suggestion by Miglio et al. (2012) that stars KIC 2437103 ($\Delta P_{\text{obs}} = 306$ s) and KIC 2437589 ($\Delta P_{\text{obs}} = 39$ s) are an RC and an RGB star, respectively, and that KIC 5024404 ($\Delta P_{\text{obs}} = 182$ s) is an RC star. Lastly, we find a number of possible candidates for evolved RC stars in both NGC 6791 and NGC 6819, as suggested by our measurement of their masses (Figure 10), which indicate that they have a radius larger than the other RC stars. The special cases discussed in Section 5.3 represent potentially interesting targets for detailed theoretical modeling.

Funding for this Discovery mission is provided by NASA’s Science Mission Directorate. The authors thank the entire *Kepler* team, without whom this investigation would not have been

possible. The research leading to these results has received funding from the European Community’s Seventh Framework Programme (FP7/2007–2013) under grant agreement No. 269194. D.S. acknowledges support from the Australian Research Council. K.B. acknowledges funding from the Carlsberg Foundation. S.H. acknowledges financial support from the Netherlands Organisation for Scientific Research (NWO). T.K. is supported by the FWO-Flanders under project O6260-G.0728.11. NCAR is partially supported by the National Science Foundation. This research was supported in part by the National Science Foundation under grant No. NSF PHY05-51164. Data presented in this paper are available upon request to the first author.

REFERENCES

- Appourchaux, T., Benomar, O., Gruberbauer, M., et al. 2012, *A&A*, 537, A134
 Basu, S., Grundahl, F., Stello, D., et al. 2011, *ApJ*, 729, L10
 Baudin, F., Barban, C., Belkacem, K., et al. 2011, *A&A*, 529, A84
 Bedding, T. R. 2011, arXiv:1107.1723v1
 Bedding, T. R., Huber, D., Stello, D., et al. 2010, *ApJ*, 713, L176
 Bedding, T. R., Mosser, B., Huber, D., et al. 2011, *Nature*, 471, 608
 Belkacem, K., Dupret, M. A., Baudin, F., et al. 2012, *A&A*, 540, L7
 Bildsten, L., Paxton, B., Moore, K., & Macias, P. J. 2012, *ApJ*, 744, L6
 Borucki, W. J., Koch, D., Basri, G., et al. 2010, *Science*, 327, 977
 Bragaglia, A., Carretta, E., Gratton, R. G., et al. 2001, *AJ*, 121, 327
 Brogaard, K., Bruntt, H., Grundahl, F., et al. 2011, *A&A*, 525, A2
 Brogaard, K., Vandenberg, D. A., Bruntt, H., et al. 2012, *A&A*, 543, A106
 Brown, T. M., Latham, D. W., Everett, M. E., & Esquerdo, G. A. 2011, *AJ*, 142, 112
 Casagrande, L., Portinari, L., & Flynn, C. 2006, *MNRAS*, 373, 13
 Casagrande, L., Ramírez, I., Meléndez, J., Bessell, M., & Asplund, M. 2010, *A&A*, 512, A54

- Chaplin, W. J., Houdek, G., Karoff, C., Elsworth, Y., & New, R. 2009, *A&A*, **500**, L21
- Christensen-Dalsgaard, J. 1984, in Proc. Workshop on Space Research Prospects in Stellar Activity and Variability, ed. A. Mangeney & F. Praderie (Paris: Obs. Paris-Meudon), 11
- Christensen-Dalsgaard, J. 2011, arXiv:1106.5946v1
- Christensen-Dalsgaard, J., & Perez Hernandez, F. 1992, *MNRAS*, **257**, 62
- De Ridder, J., Barban, C., Baudin, F., et al. 2009, *Nature*, **459**, 398
- Dupret, M.-A., Belkacem, K., Samadi, R., et al. 2009, *A&A*, **506**, 57
- García, R. A., Hekker, S., Stello, D., et al. 2011, *MNRAS*, **414**, L6
- Gilliland, R. L., Brown, T. M., Christensen-Dalsgaard, J., et al. 2010, *PASP*, **122**, 131
- Glushkova, E. V., Batyrshinova, V. M., & Ibragimov, M. A. 1999, *Astron. Lett.*, **25**, 86
- Gough, D. O. 1986, in Hydrodynamic and Magnetodynamic Problems in the Sun and Stars, Proc. Workshop in honor of Prof. Wasaburo Unno's 60th birthday, ed. Y. Osaki (Tokyo: Tokyo Univ.), 117
- Hekker, S., Basu, S., Stello, D., et al. 2011, *A&A*, **530**, A100
- Hekker, S., Broomhall, A.-M., Chaplin, W. J., et al. 2010, *MNRAS*, **402**, 2049
- Hole, K. T., Geller, A. M., Mathieu, R. D., et al. 2009, *AJ*, **138**, 159
- Houdek, G., Balmforth, N. J., Christensen-Dalsgaard, J., & Gough, D. O. 1999, *A&A*, **351**, 582
- Huber, D., Bedding, T. R., Stello, D., et al. 2010, *ApJ*, **723**, 1607
- Huber, D., Stello, D., Bedding, T. R., et al. 2009, *Commun. Asteroseismology*, **160**, 74
- Jenkins, J. M., Caldwell, D. A., Chandrasekaran, H., et al. 2010a, *ApJ*, **713**, L120
- Jenkins, J. M., Caldwell, D. A., Chandrasekaran, H., et al. 2010b, *ApJ*, **713**, L87
- Kallinger, T., Hekker, S., Mosser, B., et al. 2012, *A&A*, **541**, 51
- Kallinger, T., Mosser, B., Hekker, S., et al. 2010a, *A&A*, **522**, A1
- Kallinger, T., Weiss, W. W., Barban, C., et al. 2010b, *A&A*, **509**, A77
- Koch, D. G., Borucki, W. J., Basri, G., et al. 2010, *ApJ*, **713**, L79
- Mathur, S., García, R. A., Régulo, C., et al. 2010, *A&A*, **511**, A46
- Mazumdar, A. 2005, *A&A*, **441**, 1079
- Meibom, S., Barnes, S. A., Latham, D. W., et al. 2011, *ApJ*, **733**, L9
- Miglio, A., Brogaard, K., Stello, D., et al. 2012, *MNRAS*, **419**, 2077
- Montalbán, J., Miglio, A., Noels, A., Scuflaire, R., & Ventura, P. 2010, *ApJ*, **721**, L182
- Mosser, B., & Appourchaux, T. 2009, *A&A*, **508**, 877
- Mosser, B., Barban, C., Montalbán, J., et al. 2011a, *A&A*, **532**, A86
- Mosser, B., Belkacem, K., Goupil, M. J., et al. 2011b, *A&A*, **525**, L9
- Mosser, B., Elsworth, Y., Hekker, S., et al. 2012a, *A&A*, **537**, A30
- Mosser, B., Goupil, M. J., Belkacem, K., et al. 2012b, *A&A*, **540**, 143
- Ramírez, I., & Meléndez, J. 2005, *ApJ*, **626**, 446
- Rosvick, J. M., & Vandenberg, D. A. 1998, *AJ*, **115**, 1516
- Skrutskie, M. F., Cutri, R. M., Stiening, R., et al. 2006, *AJ*, **131**, 1163
- Stello, D. 2011, arXiv:1107.1311v2
- Stello, D., Basu, S., Bedding, T. R., et al. 2010, *Astron. Nachr.*, **331**, 985
- Stello, D., Huber, D., Kallinger, T., et al. 2011a, *ApJ*, **737**, L10
- Stello, D., Meibom, S., Gilliland, R. L., et al. 2011b, *ApJ*, **739**, 13
- Stetson, P. B., Bruntt, H., & Grundahl, F. 2003, *PASP*, **115**, 413
- Tassoul, M. 1980, *ApJS*, **43**, 469
- Ulrich, R. K. 1986, *ApJ*, **306**, L37
- Vandakurov, Y. V. 1968, *SvA*, **11**, 630
- White, T. R., Bedding, T. R., Stello, D., et al. 2011a, *ApJ*, **743**, 161
- White, T. R., Bedding, T. R., Stello, D., et al. 2011b, *ApJ*, **742**, L3