

University of Groningen

## Pharmacodynamic Interactions Between Ketamine and Psychiatric Medications Used in the Treatment of Depression

Veraart, Jolien K E; Smith-Apeldoorn, Sanne Y; Bakker, Iris M; Visser, Berber A E; Kamphuis, Jeanine; Schoevers, Robert A; Touw, Daan J

*Published in:*  
International Journal of Neuropsychopharmacology

*DOI:*  
[10.1093/ijnp/pyab039](https://doi.org/10.1093/ijnp/pyab039)

**IMPORTANT NOTE: You are advised to consult the publisher's version (publisher's PDF) if you wish to cite from it. Please check the document version below.**

*Document Version*  
Publisher's PDF, also known as Version of record

*Publication date:*  
2021

[Link to publication in University of Groningen/UMCG research database](#)

### *Citation for published version (APA):*

Veraart, J. K. E., Smith-Apeldoorn, S. Y., Bakker, I. M., Visser, B. A. E., Kamphuis, J., Schoevers, R. A., & Touw, D. J. (2021). Pharmacodynamic Interactions Between Ketamine and Psychiatric Medications Used in the Treatment of Depression: A Systematic Review. *International Journal of Neuropsychopharmacology*, 24(10), 808-831. <https://doi.org/10.1093/ijnp/pyab039>

### **Copyright**

Other than for strictly personal use, it is not permitted to download or to forward/distribute the text or part of it without the consent of the author(s) and/or copyright holder(s), unless the work is under an open content license (like Creative Commons).

The publication may also be distributed here under the terms of Article 25fa of the Dutch Copyright Act, indicated by the "Taverne" license. More information can be found on the University of Groningen website: <https://www.rug.nl/library/open-access/self-archiving-pure/taverne-amendment>.

### **Take-down policy**

If you believe that this document breaches copyright please contact us providing details, and we will remove access to the work immediately and investigate your claim.

Downloaded from the University of Groningen/UMCG research database (Pure): <http://www.rug.nl/research/portal>. For technical reasons the number of authors shown on this cover page is limited to 10 maximum.

## REVIEW

# Pharmacodynamic Interactions Between Ketamine and Psychiatric Medications Used in the Treatment of Depression: A Systematic Review

Jolien K. E. Veraart<sup>o</sup>, Sanne Y. Smith-Apeldoorn, Iris M. Bakker, Berber A. E. Visser, Jeanine Kamphuis, Robert A. Schoevers, Daan J. Touw

University of Groningen, University Medical Center Groningen, Department of Psychiatry, Groningen, the Netherlands and PsyQ Haaglanden, Parnassia Psychiatric Institute, The Hague, the Netherlands (Ms Veraart); University of Groningen, University Medical Center Groningen, Department of Psychiatry, Groningen, the Netherlands (Ms Smith-Apeldoorn, Ms Bakker, Ms Visser, and Dr Kamphuis); University of Groningen, University Medical Center Groningen, Department of Psychiatry, Groningen, the Netherlands and University of Groningen, Research School of Behavioural and Cognitive Neurosciences (BCN), Groningen, the Netherlands (Dr Schoevers); Department of Clinical Pharmacy and Pharmacology, University of Groningen, University Medical Center Groningen, Groningen, The Netherlands (Dr Touw).

Correspondence: J. K. E. Veraart, MD, Mangostraat 1, 2552 KS, The Hague, The Netherlands ([j.k.e.veraart@umcg.nl](mailto:j.k.e.veraart@umcg.nl)).

## Abstract

**Background.** The use of ketamine for depression has increased rapidly in the past decades. Ketamine is often prescribed as an add-on to other drugs used in psychiatric patients, but clear information on drug-drug interactions is lacking. With this review, we aim to provide an overview of the pharmacodynamic interactions between ketamine and mood stabilizers, benzodiazepines, monoamine oxidase-inhibitors, antipsychotics, and psychostimulants.

**Methods.** MEDLINE and Web of Science were searched.

**Results.** Twenty-four studies were included. For lithium, no significant interactions with ketamine were reported. Two out of 5 studies on lamotrigine indicated that the effects of ketamine were attenuated. Benzodiazepines were repeatedly shown to reduce the duration of ketamine's antidepressant effect. For the monoamine oxidase-inhibitor tranylcypromine, case reports showed no relevant changes in vital signs during concurrent S-ketamine use. One paper indicated an interaction between ketamine and haloperidol, 2 other studies did not. Four papers investigated risperidone, including 3 neuroimaging studies showing an attenuating effect of risperidone on ketamine-induced brain perfusion changes. Clozapine significantly blunted ketamine-induced positive symptoms in patients with schizophrenia but not in healthy participants. One paper reported no effect of olanzapine on ketamine's acute psychotomimetic effects.

**Conclusion.** Current literature shows that benzodiazepines and probably lamotrigine reduce ketamine's treatment outcome, which should be taken into account when considering ketamine treatment. There is evidence for an interaction between ketamine and clozapine, haloperidol, and risperidone. Due to small sample sizes, different subject groups and various outcome parameters, the evidence is of low quality. More studies are needed to provide insight into pharmacodynamic interactions with ketamine.

**Keywords:** Depression, ketamine, pharmacodynamic interactions

Received: February 17, 2021; Revised: June 3, 2021; Accepted: June 23, 2021

© The Author(s) 2021. Published by Oxford University Press on behalf of CINP.

This is an Open Access article distributed under the terms of the Creative Commons Attribution-NonCommercial License (<http://creativecommons.org/licenses/by-nc/4.0/>), which permits non-commercial re-use, distribution, and reproduction in any medium, provided the original work is properly cited. For commercial re-use, please contact [journals.permissions@oup.com](mailto:journals.permissions@oup.com)

## Introduction

Since 2000 the rapid and robust antidepressant effects of ketamine have been reported repeatedly (Han et al., 2016; Kishimoto et al., 2016). Ketamine is increasingly being used off label for the treatment of depression in the United States (Wilkinson and Sanacora, 2017) and at a slightly slower pace in Europe (López-Díaz et al., 2019), often as an add-on to other psychiatric medication. Furthermore, the US Food and Drug Administration (FDA) and European Medicines Agency (EMA) recently approved intranasal S-ketamine for treatment-resistant depression (TRD) in conjunction with an oral antidepressant and for depression with imminent risk of suicide (EMA, 2019; FDA, 2019). However, to date, there are no clinical practice guidelines recommending the use of S-ketamine in depression (López-Díaz et al., 2019; Malhi et al., 2021). The use of ketamine in clinical practice entails different challenges, one of them being the acute and bothersome psychotomimetic side effects such as anxiety, perceptual changes, and dissociation (Krystal et al., 1994). In case of severe agitation or anxiety, clinicians may resort to benzodiazepines or antipsychotics as rescue medication (Kasper et al., 2020). Furthermore, strategies to maintain the antidepressant effects of ketamine are considered a major unmet need (Papakostas, 2020). Ketamine is often combined with other psychiatric drugs and continuation of this psychiatric pharmacotherapy has been proposed to prevent relapse, a strategy that is already proven effective after successful electroconvulsive therapy (Sackeim et al., 2001). Since most patients for whom ketamine treatment is considered are already being prescribed psychiatric drugs, knowledge on pharmacodynamic interactions is crucial.

Ketamine is a noncompetitive N-methyl-D-aspartate (NMDA) glutamate receptor antagonist. In addition, it shows affinity for multiple other receptors (Mathew et al., 2016). Action at the  $\mu$ ,  $k$ , and  $\sigma$  receptors may contribute to its analgesic effects. Furthermore, there is inhibition at muscarinic and nicotinic receptors and activity as a cholinesterase inhibitor. Modulation of monoaminergic systems occurs via inhibition of reuptake transporters (dopamine, serotonin, and noradrenaline) and via direct activity at the monoamine receptors (dopamine and serotonin). Inhibition of the NMDA receptor also leads to downstream enhancement of monoaminergic activity (Mathew et al., 2016). The main mechanism of the antidepressant action is believed to stem from antagonism of the NMDA receptor on  $\gamma$ -aminobutyric acid (GABA) releasing interneurons. After a reduction in GABA inhibition, the pyramidal cells in the prefrontal cortex (PFC) release glutamate. This results in enhanced stimulation of  $\alpha$ -amino-3-hydroxy-5-methyl-4-isoxazolepropionic acid receptors, activating a signaling cascade that raises neurotrophic factors and induces synaptic plasticity (Krystal et al., 1994; Mathew et al., 2016). Modulation of brain areas induced by ketamine are most notably found in the subgenual anterior cingulate cortex, posterior cingulate cortex, PFC, and hippocampus (Ionescu et al., 2018).

Many trials have studied the efficacy and safety of ketamine treatment as add-on to regular antidepressant agents such as selective serotonin reuptake inhibitors, serotonin-norepinephrine reuptake inhibitors, tricyclic antidepressants, bupropion, mirtazapine, etc. (Kishimoto et al., 2016; Kryst et al., 2020; Memon et al., 2020). However, other psychiatric drugs are also often used in combination with ketamine. The pharmacodynamic actions of ketamine may provide leads on how to optimize treatment. For instance, hypotheses on synergistic effects of ketamine and lithium through inhibition of glycogen synthase kinase 3 have been proposed (Ghasemi et al., 2010). On

the other hand, it can be hypothesized that lamotrigine might influence the effects of ketamine by reducing glutamate transmission as a result of sodium channel blockage. Anecdotal evidence and personal experience suggest that in some patients, lamotrigine might counteract the antidepressant effects of ketamine. A case report by Ford et al. (2015) suggests that higher doses of benzodiazepines attenuate the antidepressant effect of ketamine. While previous data show that ketamine addition to regular antidepressants is safe and accelerates the antidepressant response (Hu et al., 2016; Arabzadeh et al., 2018), there are studies presenting enhanced monoamine levels in the rat brain effectuated by ketamine (Nishimura and Sato, 1999; Tso et al., 2004). Consequently, monoamine oxidase inhibitors (MAOIs) in combination with ketamine might increase heart rate and blood pressure or cause a serotonergic syndrome. Given the affinity of ketamine for monoamine receptors, interactions may also be expected for ketamine and antipsychotics or psychostimulants. The pharmacological interactions between ketamine and other psychiatric medications commonly used in patients with TRD have not been systematically reviewed.

The aim of this review is to systematically summarize the current knowledge from human studies on combined use of ketamine with psychiatric drugs commonly prescribed to patients with depression.

## Methods

The electronic databases MEDLINE and Web of Science were searched on July 9, 2020, for studies that examined a pharmacodynamic interaction between ketamine and a psychiatric drug consisting of antidepressants, mood stabilizers, antipsychotics, benzodiazepine(-agonist)s, or psychostimulants. Filters for English, Dutch, and human studies were applied. The search strategy was built as follows: ('generic name' OR 'brand name') AND ('ketamine') including multiple generic and brand names for each drug. The search strategies can be found in the [supplementary Material \(Appendix 1\)](#).

We included human studies with a randomized controlled design. In case limited information from controlled trials was available (only 1 or no randomized controlled trials [RCTs]), we included studies with lower levels of evidence (post-hoc analyses from controlled trials and open label studies). Furthermore, case reports were only included if they provided supporting evidence regarding an interaction between ketamine and psychiatric medication. Grey literature (e.g., conference abstracts) was included in the review. Studies that investigated the antidepressant effect of ketamine added to a regular antidepressant (except MAOIs) were excluded because the safety and additive antidepressant effect of ketamine has already been demonstrated irrefutably. Furthermore, studies investigating anesthetic doses of ketamine for induction or sedation were excluded. The references were imported in the reference manager Endnote. After removal of duplicates (Bramer et al., 2016), 2 reviewers (I.B. and B.V.) independently screened the titles and abstracts and full texts. Discrepancies were solved by discussion, and if necessary, a third or fourth reviewer (J.V. or D.T.) assisted to come to an agreement. Systematic reviews were screened for studies that possibly met our criteria and were not found with the literature search. We selected information on the study design, sample size, population characteristics, details on the intervention, clinical outcomes, and hypothesis on the mechanisms of action. The process is shown in [Figure 1](#). Joanna Briggs Institute's critical appraisal tools for RCTs, quasi-experimental studies, and

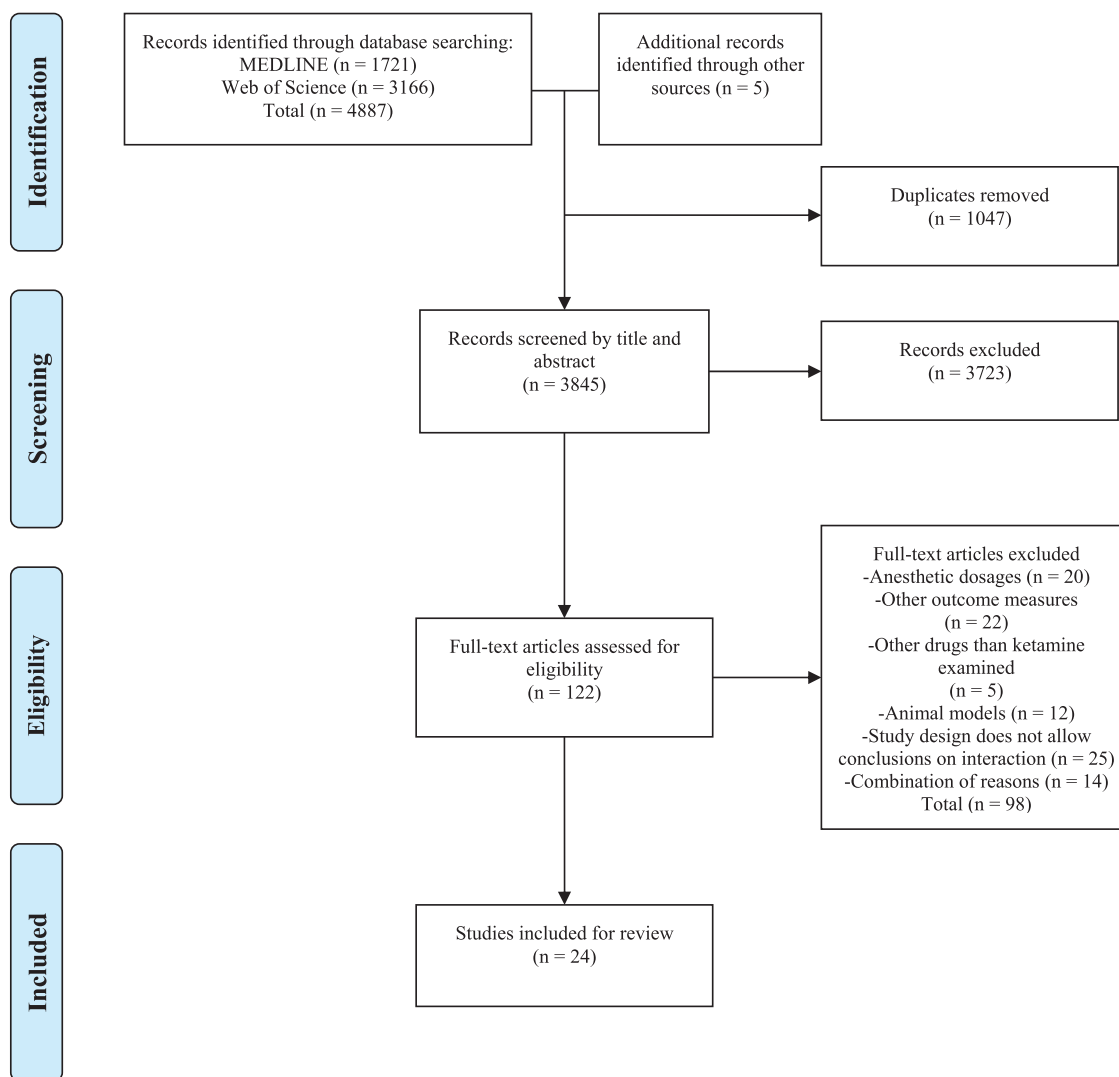


Figure 1. PRISMA flowchart

case reports were used for quality assessment of the included studies (JBI, 2020). This systematic review was written according to the Preferred Reporting Items for Systematic Reviews and Meta-Analysis statement.

## Results

### Studies Retrieved

In total, 4887 studies were identified through database searching. Screening of the reference lists of systematic reviews did not result in any additional articles. Five additional papers were proposed during the review process of this manuscript. Deduplication resulted in 3845 articles. By screening titles and abstracts, 3723 studies were excluded and 1228 articles remained for full-text assessment. Subsequently, 98 studies were excluded for the following reasons: anesthetic dosages (n=20), other outcome measures (n=22), other drugs than ketamine examined (n=5), animal models (n=12), a study design that does not allow conclusions on an interaction (n=25), or for a combination of these reasons (n=14). Finally, 24 studies met our eligibility criteria and were included in this systematic review (Figure 1). The results of the quality

assessment can be found in the [supplementary Material \(Appendix 2\)](#).

We included 2 RCTs on lithium and 7 studies on lamotrigine. Furthermore, we retrieved 1 case report, 3 post-hoc analyses, and a placebo-controlled study on the interaction between ketamine and benzodiazepines. We found 2 case reports on concomitant use of ketamine and tranylcypromine. Three double-blind, placebo-controlled studies investigated an interaction with haloperidol. An interaction between risperidone and ketamine was studied in 4 articles (3 were already included for lamotrigine, and these report on different outcome results from the same study). One RCT reported on an interaction between olanzapine and ketamine, and 3 on clozapine and ketamine. No studies were found investigating the concomitant use of ketamine with psychostimulants.

### Lithium

Based on the mechanism of action of lithium and ketamine, one would expect synergistic effects in patients with depression. The study by Costi et al. (2019) included 42 patients with major depressive disorder (MDD) who showed an antidepressant response to ketamine. Patients received 600–1200 mg of lithium

or placebo in combination with 0.5 mg/kg intravenous (IV) ketamine. No significant difference was found on the Montgomery Åsberg Depression Rating Scale (MADRS) scores between the 2 groups. The study by [Xu et al. \(2015\)](#) investigated 0.5 mg/kg IV ketamine in 36 patients with bipolar TRD that were maintained on a therapeutic dose of lithium (plasma target level of 0.6–1.2 mEq/L) or valproate. Depressive symptoms improved significantly after ketamine in both the lithium and valproate group, and there were no significant differences between the 2 mood stabilizers. Taken together, lithium did not seem to potentiate ketamine's antidepressant effect in patients with depression ([Table 1](#)).

### Lamotrigine

Since lamotrigine reduces glutamatergic activity, an impeding interaction with ketamine can be hypothesized. Seven studies reported on the effects of 300 mg lamotrigine prior to IV ketamine administration in dosages ranging from 0.12 to 0.5 mg/kg. Except from the study of [Mathew et al. \(2010\)](#), which included patients with MDD, these studies investigated the effects in healthy individuals ([Doyle, 1990](#); [Anand et al., 2000](#); [Deakin et al., 2008](#); [Joules et al., 2015](#); [Shcherbinin et al., 2015](#); [Abdallah et al., 2017](#)). Lamotrigine did not block the ketamine-induced psychotomimetic effects measured by the Brief Psychiatric Rating Scale (BPRS) and Clinician-Administered Dissociative States Scale (CADSS) in the study by [Abdallah et al. \(2017\)](#). [Anand et al. \(2000\)](#) reported that pretreatment with lamotrigine in healthy individuals showed a significant reduction in ketamine-induced Hopkins Verbal Learning Test impairment and a significant decrease in ketamine-induced symptoms measured by the CADSS and BPRS scores. They found an increasing effect on mood elevation after ketamine measured by the Young Mania Rating Scale with lamotrigine. [Mathew et al. \(2010\)](#) observed no attenuated psychotomimetic effects in patients with MDD randomized to lamotrigine prior to ketamine. [Deakin et al. \(2008\)](#) recorded a significant reduction in ketamine-induced total CADSS and BPRS scores when pretreated with lamotrigine. Furthermore, areas showing blood oxygenation level-dependent (BOLD) responses to ketamine assessed by pharmacomagnetic resonance imaging (phMRI) revealed greater responses after placebo infusion than after lamotrigine infusion. In addition, a trial by [Doyle et al. \(2013\)](#) reported that lamotrigine administration resulted in a relatively consistent attenuation of the BOLD response in frontal and thalamic regions effectuated by IV ketamine. [Joules et al. \(2015\)](#) and [Shcherbinin et al. \(2015\)](#) (reporting other outcomes from the same study as Doyle et al.) found no interaction between lamotrigine and ketamine on the degree-centrality pattern and resting state brain perfusion. To summarize, the studies on lamotrigine seem to confirm an antagonistic interaction with ketamine, but the relevance for clinical outcomes is still unclear ([Table 2](#)).

### Benzodiazepines

[Ford et al. \(2015\)](#) suggested that benzodiazepines could attenuate the action of ketamine in their case of a patient with bipolar disorder who experienced a severe episode of depression with no response to several antidepressants and antipsychotics. He was treated with lorazepam and responded to repeated doses of ketamine (0.5 mg/kg IV). The antidepressant response was prolonged from 2–3 days to 10–14 days after lorazepam (3.5 mg/d) was withdrawn.

In addition to this case report, we found 4 papers reporting on an interaction between ketamine and benzodiazepines. In a post-hoc analysis of an open label study with patients with TRD, [Albott et al. \(2015\)](#) found no significant difference between 4 benzodiazepine users (mean daily dose 2.75 mg lorazepam equivalents) and 9 non-users in depression response rate (MADRS score  $\leq$  50%), remission (MADRS  $<$  10) or depression relapse (MADRS  $\geq$  50% of baseline) after ketamine infusions (0.5 mg/kg/40 min). However, benzodiazepine users showed a significantly longer time to antidepressant response ( $P = .029$ ), longer time to depression remission ( $P = .042$ ), and a shorter time to depression relapse ( $P = .020$ ). In a post-hoc analysis of [Frye et al. \(2015\)](#), benzodiazepines gave no significant difference in response rate in 10 patients with TRD. Nevertheless, they found that the mean benzodiazepine dose (0.75 mg lorazepam equivalents) was significantly lower ( $P = .026$ ) in the responder group (response  $\geq$  50% reduction in MADRS scores) than in the non-responder group (3 mg). [Andrashko et al. \(2019\)](#) presented an analysis of 2 randomized controlled cross-over trials with 47 patients with MDD. This study found a significant difference in benzodiazepine dosage between responders (response  $\geq$  50% reduction in MADRS scores) and non-responders. Logistic regression analysis showed that benzodiazepine medication (10 mg and more in diazepam equivalent) after ketamine infusion of 0.54 mg/kg predicted nonresponse anytime during 1-week follow-up (odds ratio = 1.5,  $P = .0445$ ). In a study of [Krystal et al. \(1998\)](#), lorazepam 2 mg reduced emotional distress, and it tended to reduce distorted sensory perceptions associated with ketamine infusion (0.26 mg/kg bolus, followed by 0.65 mg/kg/h) in 30 healthy individuals. It also reduced the inability to produce a proverb interpretation, perhaps an indication of reduced thought blocking. However, it failed significantly to block psychotogenic, perceptual, cognitive, neuroendocrine, and physiological ketamine responses. In conclusion, these studies indicate that higher doses of benzodiazepines can delay the time to response and remission and shorten the antidepressant effects of ketamine. Furthermore, higher doses of benzodiazepines predicted nonresponse ([Table 3](#)).

### Tranlycypromine

No reports were found that confirmed the hypothesized risk of hypertensive crisis or serotonergic syndrome caused by the combination of MAOIs and ketamine. We retrieved 2 case reports about patients with depression receiving tranlycypromine in dosages ranging from 10 to 80 mg daily in combination with S-ketamine ([Bartova et al., 2015](#); [Dunner et al., 2019](#)). Two patients were administered IV S-ketamine (dosages 12.5–75 mg) while the other patient received intranasal (IN) S-ketamine (dosages 28–56 mg). No relevant cardiovascular or hemodynamic changes were observed ([Table 4](#)).

### Haloperidol

Even though the clinical impact in humans remains unknown, ketamine has shown dopamine-enhancing effects in vitro. The dopamine  $D_2$  receptor antagonist haloperidol might therefore interact with ketamine's effects. [Krystal et al. \(1999\)](#) reported that in 35 healthy individuals, impairments in executive cognitive functions (assessed with the Wisconsin card sorting test and the Gorham's Proverb's test) produced by ketamine infusion, bolus of 0.26 mg/kg followed by 0.65 mg/kg/h, were reduced by haloperidol pretreatment (5 mg). In addition, haloperidol

Table 1. Lithium

| Source:<br>1st author,<br>year | Study<br>design   | No. of partici-<br>pants (males)         | Population   | Drug, dosage,<br>route of<br>administration,<br>time interval<br>with ketamine<br>administration<br>and duration | Ketamine dos-<br>age, route of<br>administration,<br>and duration | Clinical outcome   | Possible<br>mechanism of<br>interaction  |
|--------------------------------|---|--|--|--|---|--|--|
| <b>Costi et al.<br/>(2019)</b> | Randomized,<br>double-<br>blind,<br>placebo-<br>controlled<br>trial               | 42, 34<br>completed<br>the study<br>(16) | Patients with diagnosis of MDD of at least moderate severity (QIDS-SR score $\geq 14$ ) with recurrent or chronic MDD, average MADRS score of 32, and failed to respond to $\geq 2$ lifetime AD trials. Only patients who showed an AD response to ketamine were included. | Lithium 600–<br>1200 mg<br>oral, <sup>a,b</sup> or<br>placebo  | Ketamine<br>0.5 mg/kg IV<br>for 40 min                            | No significant difference on MADRS scores between lithium and placebo in combination with ketamine.  | No synergistic AD effect of lithium in combination with ketamine described.  |
| <b>Xu et al.<br/>(2015)</b>    | Randomized,<br>double-<br>blind,<br>placebo-<br>controlled,<br>crossover<br>trial | 36 (15)                                  | Patients with bipolar TRD and MADRS score $\geq 20$ . All were maintained on therapeutic doses of lithium or valproate.  | Lithium blood<br>target level<br>0.6–1.2<br>mEq/L, <sup>a,c</sup> or<br>valproate                                | Ketamine<br>0.5 mg/kg IV<br>in 40 min                             | Both lithium and valproate significantly improved depressive symptoms but no statistically significant difference observed between mood stabilizers. Serum lithium and valproate levels did not correlate with ketamine's AD efficacy. | Although study was potentially underpowered, results suggest that ketamine may not potentiate AD efficacy of lithium and valproate in bipolar TRD. |

Abbreviations: AD, antidepressant; IV, intravenous; MADRS, Montgomery-Asberg Depression Rating Scale; MDD, major depressive disorder; QIDS-SR, Quick Inventory of Depressive Symptomatology - Self Report; TRD, treatment-resistant depression.

<sup>a</sup>Time interval uncertain.

<sup>b</sup>Dosage adjusted to a target blood level in the range of 0.6–0.9 mEq/L.

<sup>c</sup>Route of administration not reported.

Table 2. Lamotrigine

| Source: 1st author, year | Study design  | No. of participants (males)    | Population          | Drug, dosage, route of administration, time interval with ketamine administration | Ketamine dosage, route of administration and duration                           | Clinical outcome  | Possible mechanism of interaction   |
|--------------------------|---|--------------------------------|---------------------|---|---|---|---|
| Abdallah et al. (2017)   | Randomized, double-blind, placebo-controlled, crossover trial | 18 (18)                        | Healthy individuals | Lamotrigine 300 mg oral, or placebo, about 2 h prior to ketamine <sup>a</sup>     | Ketamine 0.23 mg/kg IV in 2 min followed by 0.58 mg/kg for approximately 70 min | Ketamine significantly increased BPRS and CADSS scores but pretreatment with lamotrigine had no significant effect on ketamine-induced increases in BPRS and CADSS scores. Lamotrigine significantly reduced ketamine-induced GBCr surge in clusters of bilateral dorsomedial and left frontolateral prefrontal cortex. Significantly higher GBCr was found in vPFC of TRD patients compared with healthy controls. Ketamine did not significantly reduce vPFC GBCr in TRD patients but did reduce vPFC GBCr in healthy individuals. Following pretreatment with lamotrigine, ketamine showed no significant effects on GBCr in vPFC. | Inhibition of glutamate transmission reduces GBCr in prefrontal cortex. Ketamine induces glutamate level and so increases GBCr in prefrontal cortex. Glutamate release inhibitor lamotrigine reduces glutamate level induced by ketamine and so reduces GBCr and attenuates effect of ketamine. |
| Anand et al. (2000)      | Randomized, double-blind, balanced order trial                | 19, 16 completed the study (8) | Healthy individuals | Lamotrigine, 300 mg, oral, 2 h prior to ketamine                                  | 0.26 mg/kg IV in 1 min followed by 0.65 mg/kg for 90 min                        | Lamotrigine led to increase in ketamine-induced mood elevation (measured by YMRS). Led to decrease in ketamine-induced impairment of learning a wordlist (measured by HVLT) and dissociative symptoms (measured by CADSS score. Also a significant decrease in ketamine-induced positive and negative symptoms (measured by BPRS symptom score).  | Lamotrigine may reduce hyperglutamatergic consequences of NMDA receptor dysfunction implicated in pathophysiological processes of neuropsychiatric illnesses. It decreases glutamate release by blocking sodium channels and so reduces increased glutamate levels effectuated by ketamine.     |

Table 2. Continued

| Source: 1st author, year | Study design   | No. of participants (males)     | Population   | Drug, dosage, route of administration, time interval with ketamine administration | Ketamine dosage, route of administration and duration        | Clinical outcome  | Possible mechanism of interaction  |
|--------------------------|--|---------------------------------|--|---|--|---|--|
| Deakin et al. (2008)     | Randomized, double-blind, placebo-controlled, crossover, counterbalanced-order trial | 21 (21), 19 completed the study | Healthy right-handed individuals   | Lamotrigine, 300 mg, oral, 2 h prior to ketamine                                  | 0.26 mg/kg IV in 1 min followed by 0.25 mg/kg/h <sup>b</sup> | After ketamine infusion with lamotrigine pretreatment, BPRS total, thought disorder, activation, and hallucinations scores were significantly lower. Similarly, CADSS total, derealization and depersonalization scores were significantly lower. Several areas showing BOLD signal responses to ketamine in ketamine-placebo experiment also showed significantly greater response to ketamine after placebo infusion than after lamotrigine infusion. | Effects of ketamine are mediated by enhanced glutamate release. Glutamate system challenged by ketamine through upstream effect of glutamate on neural activity and this is isolated by glutamate inhibitor lamotrigine. |
| Mathew et al. (2010)     | Randomized, double-blind, placebo-controlled, continuation trial                     | 26 (16)                         | Medication-free patients with diagnosis of MDD (chronic and/or recurrent) of at least moderate severity, >32 on IDS-C30 and insufficient response to >2 adequate AD trials in current episode. | Lamotrigine 300 mg oral, or placebo, 2 h prior to ketamine infusion               | Ketamine 0.5 mg/kg IV for 40 min                             | Lamotrigine failed to attenuate mild, transient side-effects associated with ketamine. No difference detected in MADRS scores and no differences on BPRS positive symptoms between lamotrigine and placebo treatment groups. Also no difference in CADSS scores found.  | No interaction reported between ketamine and lamotrigine.  |



Table 2. Continued

| Source: 1st author, year             | Study design  | No. of participants (males)   | Population   | Drug, dosage, route of administration, time interval with ketamine administration | Ketamine dosage, route of administration and duration  | Clinical outcome   | Possible mechanism of interaction  |
|--------------------------------------|---|---|--|---|--|--|--|
| <a href="#">Doyle et al. (2013)</a>  | Randomized, double-blind, placebo-controlled, crossover trial | 20 (20), 16 completed the study   | Healthy individuals<br>Same sample as <a href="#">Joules et al. (2015)</a> and <a href="#">Shcherbinin et al. (2015)</a> | Lamotrigine 300 mg oral, or placebo, 4.75 h prior to ketamine                     | Ketamine 0.12 (mean) mg/kg IV in 1 min followed by approximately 0.31 mg/kg/h <sup>b,c</sup> | Significant BOLD response revealed to ketamine infusion including positive and negative responses. For positively responding regions (frontal and thalamic regions), pretreatment with lamotrigine resulted in relatively consistent attenuation of ketamine responses. For negatively responding regions (subgenual cingulate and ventral medial prefrontal cortex), attenuating effect of lamotrigine was weak. Pretreated (lamotrigine) scans dissimilar to placebo scans. Pretreatment with lamotrigine resulted in no significant effect of ketamine on alert-drowsy scale, whereas significant differences remained for muzzy-clear scale. | Lamotrigine produces widespread inhibition of relative blood volume response and produces global attenuation of this positive ketamine response with downstream effects resulting in inhibition of glutamate release and reduces ketamine-induced changes in BOLD signal.  |
| <a href="#">Joules et al. (2015)</a> | Randomized, double-blind, placebo-controlled, crossover trial | 20 (20), 16 completed the study<br>Same sample as <a href="#">Doyle et al. (2013)</a> and <a href="#">Shcherbinin et al. (2015)</a> | Healthy individuals  | Lamotrigine 300 mg oral, or placebo, 4.75 h prior to ketamine                     | Ketamine 0.12 (mean) mg/kg IV in 1 min followed by approximately 0.31 mg/kg/h <sup>b,c</sup> | Not possible to discriminate lamotrigine from placebo, suggesting similar patterns of degree-centrality. No supportive evidence of significant modulation effect of ketamine-induced degree-centrality pattern by lamotrigine.   | No interaction reported between ketamine and lamotrigine. Pretreatment with lamotrigine does not alter ketamine-induced functional connectivity pattern. This suggests that observed changes in connectivity more likely a result of NMDA receptor blockade and possible serotonergic modulation rather than purely modulation of glutamate release. |

Table 2. Continued

| Source: 1st author, year  | Study design  | No. of participants (males)  | Population          | Drug, dosage, route of administration, time interval with ketamine administration | Ketamine dosage, route of administration and duration  | Clinical outcome  | Possible mechanism of interaction  |
|---------------------------|---|--|---------------------|---|--|---|--|
| Shcherbinin et al. (2015) | Randomized, double-blind, placebo-controlled, crossover trial | 20 (20), 16 completed the study<br>Same sample as Doyle et al. (2013) and Joules et al. (2015) | Healthy individuals | Lamotrigine 300 mg oral, or placebo, about 2.5 h prior to ketamine <sup>a</sup>   | Ketamine 0.12 (mean) mg/kg IV in 1 min followed by approximately 0.31 mg/kg/h <sup>b,c</sup> | Lamotrigine condition not distinguished from placebo for post-infusion scans. Lamotrigine had no significant effect on resting brain perfusion. | No clear interaction of lamotrigine in combination with ketamine on brain perfusion described. |

Abbreviations: AD, antidepressant; BOLD, blood oxygenation level- dependent; BPRS, Brief Psychiatric Rating Scale; CADSS, Clinician-Administered Dissociative States Scale; GBCr, global brain connectivity with global signal regression; HVLIT, Hopkins Verbal Learning Test; IDS-C<sub>50</sub>, Inventory of Depressive Symptomatology - Clinician Rated; IV, intravenous; MADRS, Montgomery-Asberg Depression Rating Scale; MDD, major depressive disorder; NMDA, N-methyl-D-aspartate; TRD, therapy resistant depression; vPFC, ventral prefrontal cortex; YMRS, Young Mania Rating Scale.

<sup>a</sup>Time interval uncertain.

<sup>b</sup>Total duration of infusion not reported.

<sup>c</sup>Dosage adjusted to a target plasma level of 75 ng/mL in accordance with the subject's height and weight.

Table 3. Benzodiazepines

| Source (1st author, year) | Study design  | No. of participants (males) | Population   | Drug, dosage, and route of administration  | Ketamine dosage, route of administration (and duration)  | Clinical outcome  | Possible mechanism   | Remarks |
|---------------------------|---|-----------------------------|--|--|--|---|--|---------|
| Ford et al. (2015)        | Case report   | 1                           | Patient with BD, experiencing a severe prolonged episode of depression, with no response to several antidepressants and antipsychotics | Lorazepam, 3.5 mg/d (lorazepam was not taken every morning). Fixed dose of lithium, fluoxetine and quetiapine. | Ketamine IV, 10 infusions of 0.5 mg/kg   | The response to the first 2 infusions extended over 2–3 d. Subsequent infusions produced responses of no more than 24 h. After lorazepam was withdrawn the duration of the response to ketamine extended from several days to 10–14 d.  | In animals administration of ketamine causes increased metabolism in the limbic system and this action is selectively blocked by administration of diazepam. Ketamine-induced dopamine release is similarly blocked by benzodiazepines.  |         |
| Krystal et al. (1998)     | Randomized, double-blind, placebo-controlled, trial | 30 (23 completed the study) | Healthy individuals  | Lorazepam, 2 mg oral or matched placebo 2 h prior to infusion  | Ketamine IV, bolus of 0.26 mg/kg followed by an infusion of 0.65 mg/kg per hour or saline infusion | Lorazepam did not significantly alter ketamine-induced BPRS positive symptoms. Lorazepam failed to block psychotogenic, perceptual, cognitive, neuroendocrine and physiologic ketamine responses as measured with the BPRS, VAS, CADSS and the WCST. It reduced emotional distress (BPRS) and it tended to reduce distorted sensory perceptions associated with ketamine infusion (CADSS). It also reduced the inability to produce a Gorman's Proverb interpretation. Ketamine sedative effects and amnesic actions were intensified by lorazepam. | NMDA antagonists reduce GABAergic inhibition in the cortex and the septum. In addition, benzodiazepine pretreatment reduces NMDA antagonist stimulation of frontal cortical dopamine turnover and cortical metabolism. They also weakly inhibit NMDA antagonist neurotoxicity. However, other data question the significance of subanesthetic ketamine effects on GABA function. For example, subanesthetic doses of NMDA antagonists have modest effects on GABA synthesis and metabolism may reduce GABA reuptake and they maintain extracellular GABA levels in the frontal cortex. |         |

Table 3. Continued

| Source (1st author, year) | Study design  | No. of participants (males)  | Population   | Drug, dosage, and route of administration  | Ketamine dosage, route of administration (and duration)                     | Clinical outcome  | Possible mechanism  | Remarks              |
|---------------------------|---|------------------------------|--|--|---|---|---|----------------------|
| Albott et al. (2017)      | Post hoc analysis of an open label study                        | 13 (4 with benzodiazepines)  | Patients with TRD (defined as failure to achieve remission from 2 adequately dosed antidepressants of different pharmacologic classes per ATH)                                     | Benzodiazepines (mean daily dose = 2.75 mg lorazepam equivalents) vs no use of benzodiazepines | Ketamine IV, 6 infusions of 0.5 mg/kg over 40 min thrice weekly during 12 d | There was no statistically significant difference between benzodiazepine users and benzodiazepine nonusers in depression response rate or remission rate or in depression relapse rate during the 28-day follow-up period. However, benzodiazepine users showed a significantly longer time to antidepressant response ( $P = .029$ ), a significantly longer time to depression remission ( $P = .042$ ), and a significantly shorter time to depression relapse ( $P = .020$ ). | One hypothesis suggests that ketamine modulates NMDARs on inhibitory GABAergic interneurons that exert tonic suppression of excitatory glutamatergic networks. By blocking NMDARs on these interneurons, ketamine decreases inhibition, resulting in a burst of glutamate, signaling through AMPA-receptor, and up-regulation of neuroplasticity-related transcription factors. Consistent with this model, agonism of the GABA-A receptor (as occurs with benzodiazepines) would increase inhibitory tone of these interneurons, thereby decreasing excitatory glutamatergic signal transduction and blocking the therapeutic effects of ketamine. |                      |
| Andrashko et al. (2019)   | Analysis of 2 consecutive placebo-controlled, cross-over trials | 47 (13 benzodiazepine users) | Patients with MDD, MADRS $\geq 20$ , $\geq 1$ prior non-response to antidepressant treatment in current episode, on stable dose of antidepressants minimum 4 wk prior to admission | Benzodiazepines in doses $>10$ mg diazepam equivalent pro die vs no use of benzodiazepines     | Ketamine IV, infusion 0.54 mg/kg  | The benzodiazepine dosage between responders and nonresponders ( $\geq 10$ mg diazepam equivalent in 12 patients from the responders group vs 1 patient in the responders group, was significantly different. Logistic regression revealed that concomitant benzodiazepine medication predicted nonresponse anytime during one-week follow-up after ketamine infusion (Odds ratio = 1.5; $P = .0445$ ).   | No hypothesis described.  | Conference abstract. |

Table 3. Continued

| Source (1st author, year) | Study design                             | No. of participants (males) | Population  | Drug, dosage, and route of administration   | Ketamine dosage, route of administration (and duration)                                   | Clinical outcome   | Possible mechanism  | Remarks |
|---------------------------|--|-----------------------------|---|---|---|--|---|---------|
| Frye et al. (2015)        | Post-hoc analysis of an open label study | 10                          | Patients with TRD (defined as a major depressive episode as part of either MDD (recurrent or single episode) or BD II and refractory to at least 2 antidepressant medication trials in current episode of depression) | Glutamatergic drugs (carbamazepine, lamotrigine, or divalproex sodium) vs GABAergic drugs (benzodiazepines, gabapentin) | Ketamine IV, 4 infusions 0.5 mg/kg over 100 min. Infusions were administered twice weekly | There was no significant difference in percentage of patients on glutamatergic drugs or GABAergic drugs in the response vs nonresponse groups. However, the mean (SD) daily dose of benzodiazepine use in the responder group (n = 4; mean [SD] dose, 0.75 [0.29] mg) was significantly lower than in the nonresponder group (3.0 [1.4] mg) (n = 2, P = .026). There was no significant difference in the percentage of patients on glutamatergic drugs, GABAergic drugs, or mean (SD) daily dose of benzodiazepines in the remission vs non-remission groups. | Inhibition of ketamine response through GABAergic mechanisms, or perhaps enhancement of ketamine response through ant glutamatergic mechanisms may limit drug response. |         |

Abbreviations: AMPA =  $\alpha$ -amino-3-hydroxy-5-methyl-4-isoxazolepropionic acid; ATH = Antidepressant Treatment History; BD II = bipolar disorder type 2; BPRS = Brief Psychiatric Rating Scale; CADSS = Clinician-Administered Sociative States Scale; GABA(ergic) =  $\gamma$ -aminobutyric acid-ergic; IV = Intravenous; MADRS = Montgomery-Asberg Depression Rating Scale; MDD = major depressive disorder; NMDA(R) = N-methyl-D-aspartate (receptor); SD = standard deviation; TRD = Treatment resistant depression; VAS = Visual Analog mood Scale; WCST = The Wisconsin Card Sorting Test.

Table 4. Tranylcypromine

| Source:<br>1st<br>author,<br>year    | Study<br>design | No. of<br>parti-<br>pants<br>(males) | Population  | Drug, dosage, route of<br>administration, time<br>interval with ketamine<br>administration   | Ketamine dos-<br>age, route of<br>administration<br>and duration   | Clinical outcome   | Possible mechanism of interaction   |
|--------------------------------------|-----------------|--------------------------------------|---|--|--|--|---|
| <b>Bartova<br/>et al.<br/>(2015)</b> | Case<br>report  | 2 (0)                                | Two cases of<br>inpatients<br>with TRD and<br>recurrent<br>severe suicidal<br>crises.   | (1st case):<br>Tranylcypromine 10 mg<br>daily oral, increased to<br>80 mg during ketamine<br>treatment <sup>a</sup><br>(2nd case):<br>Tranylcypromine 20 mg<br>daily oral, concomitant<br>with ketamine <sup>a</sup> | (1st case):<br>S-ketamine<br>12.5 mg IV<br>increased<br>up to 75 mg <sup>b</sup><br>administered<br>repeatedly<br>(2nd case):<br>S-ketamine<br>25 mg IV and<br>increased<br>up to 50 mg<br>administered<br>twice a week <sup>b</sup> | In both cases, no relevant changes<br>in blood pressure and heart rate<br>observed.  | Ketamine is thought to inhibit monoamine-<br>reuptake. Combination with tranylcypromine<br>is hypothesized to increase blood pressure and<br>heart rate. These cases put in doubt whether<br>mono-aminereuptake inhibition leads to<br>relevant pharmacodynamic interaction with<br>effect of ketamine in humans. |
| <b>Dunmer<br/>et al.<br/>(2019)</b>  | Case<br>report  | 1 (0)                                | Patient with<br>persistent<br>chronic<br>MDD with<br>moderately<br>severe anxious<br>distress and<br>melancholic<br>features.<br>Nonresponsive<br>to at least<br>8 adequate<br>treatment<br>trials. | Tranylcypromine, 60 mg <sup>a,c</sup>  | S-ketamine<br>28 mg nasal<br>spray for first<br>2 visits, for<br>third visit<br>56 mg and<br>final 4 doses<br>were 42 mg   | At end of 4-wk acute treatment<br>phase, all mood and anxiety<br>ratings in normal range. Blood<br>pressure increases during<br>treatment were within normal<br>range and no evidence of<br>hypertension. S-ketamine nasal<br>spray well tolerated and no<br>evidence of serotonin syndrome. | No evidence for monoamine enhancement by<br>ketamine.   |

Abbreviations: IV, intravenous; MDD, major depressive disorder; TRD, treatment resistant depression.

<sup>a</sup>Time interval uncertain<sup>b</sup>Total duration of infusion not reported<sup>c</sup>Route of administration not reported

reduced the anxiogenic effects and increased the sedative and prolactin responses to ketamine.

The study of [Oranje et al. \(2009\)](#) found an improving effect of 2 mg of oral haloperidol on ketamine-induced (0.3 mg/kg IV) reduction of processing negativity ( $P < .05$ ) in 18 healthy male individuals. Processing negativity is a negative deflection in the event-related potential, representing the ability to focus on 1 source of information, when multiple sources of information are present.

[Lahti et al. \(1995\)](#) found that a fixed high dose of haloperidol (0.3 mg/kg/d) did not blunt ketamine-induced psychosis in 9 patients with schizophrenia receiving ketamine (injections of 0.1, 0.3, and 0.5 mg/kg) while on and off haloperidol. In fact, the patients experienced greater increases in psychosis ratings after ketamine administration during haloperidol treatment compared with a drug-free period. Interestingly, ketamine did not produce a significant worsening in the latter group. In summary, some acute effects of ketamine (impairments in executive cognitive functions and anxiogenic effects) were reduced by haloperidol pretreatment, whereas no blunting of ketamine-induced psychosis was achieved with haloperidol in patients with schizophrenia ([Table 5](#)).

### Risperidone

The strong antiserotonergic and antidopaminergic effects of risperidone might counteract ketamine's monoaminergic enhancement. For the combined use of risperidone and ketamine, we found 3 pHMRI studies and 1 study investigating oculomotor performance. [Schmechtig et al. \(2013\)](#) reported no effect of 2 mg of risperidone on ketamine-induced (IV targeted to a concentration of 100 ng/mL) eye movement changes. In the study of [Doyle et al. \(2013\)](#) in healthy individuals analysis of different regions of interest (ROI) revealed significant positive and negative BOLD responses to ketamine infusion (targeted to a plasma level of 75 ng/mL). Risperidone 2 mg attenuated the ketamine effect across most ROIs, including the medial prefrontal and cingulate regions and the thalamus. For the negatively responding regions in the subgenual cingulate and ventromedial prefrontal cortex, risperidone strongly attenuated the negative BOLD response. In the same sample, [Joules et al. \(2015\)](#) found that ketamine increased the degree centrality, defined as the number of links incident on a node in pHMRI. Risperidone pre-treatment significantly modulated the ketamine-induced centrality changes in 20 healthy males. [Shcherbinin et al. \(2015\)](#) performed an analysis of resting brain perfusion in the same individuals. Ketamine showed positive weights (post-ketamine > pre-ketamine) in prefrontal and cingulate regions, thalamus and lateral parietal cortex in comparison with pre-ketamine in pHMRI, with strongest negative contributions in the occipital lobes. Pretreatment with risperidone significantly increased the ketamine-induced perfusion changes ( $P < .02$ ). To summarize, an interaction between ketamine and risperidone was found based on brain perfusion changes in imaging studies, but no clinical studies have yet investigated whether this would also result in an attenuation of the antidepressant effects ([Table 6](#)).

### Clozapine

Clozapine has a wide spectrum of pharmacological actions, including blockade of the dopamine  $D_1$ - and serotonergic 5-hydroxytryptamine<sub>2</sub> receptors. Hypotheses on possible interactions are not straightforward. [Lipschitz et al. \(1997\)](#) showed that clozapine 50 mg pretreatment before 0.5 mg IV ketamine did not reduce the BPRS 5 key positive or 3 key negative scores

in 7 healthy individuals, but there was a trend for a reduction in perceptual alteration as measured by the CADSS ( $P = .09$ ). Clozapine at a mean dose of 430 mg/d for several weeks significantly blunted the positive symptoms induced by ketamine in 10 patients with schizophrenia, but not the negative symptoms as reported by [Malhotra et al. \(1997\)](#). An imaging study ([Vollenweider et al., 2012](#)) with 20 healthy individuals shows that a low dose of clozapine (30 mg oral) reduced some of the S-ketamine (0.006 mg/kg/min) responses. The results of these 3 studies are inconsistent on interactions between ketamine and clozapine ([Table 7](#)).

### Olanzapine

The antagonistic effects of olanzapine on serotonin and dopamine receptors might cause an interaction with ketamine. One paper studied an interaction between olanzapine and ketamine. [Lahti et al. \(1999\)](#) investigated ketamine administration (0.3 mg/kg) in 5 healthy individuals treated with a low dose of 5 mg olanzapine and an unknown number of patients with schizophrenia treated with 10 mg. They found no difference in blocking ketamine-induced psychotic symptoms between olanzapine and placebo ([Table 8](#)).

## Discussion

This review summarizes currently available information on interactions between ketamine and other psychiatric drugs, derived from human studies investigating clinical, neuroimaging, and electrophysiological outcomes. Knowledge on potentiating and antagonistic interactions are of utmost importance for the optimization of ketamine treatment for depression.

### Mood Stabilizers

We found no evidence for interactions between lithium and ketamine, nor for the hypothesis that lithium would strengthen the antidepressant effect through inhibition of glycogen synthase kinase 3. Three studies ([Anand et al., 2000](#); [Deakin et al., 2008](#); [Doyle et al., 2013](#)) reported attenuating effects of lamotrigine pretreatment on ketamine-induced effects on the BPRS, dissociative symptoms, and BOLD responses. As lamotrigine reduces glutamate transmission by sodium channel blockage, these ketamine responses are thought to result from an increase in glutamatergic activity. Four other studies ([Mathew et al., 2010](#); [Joules et al., 2015](#); [Shcherbinin et al., 2015](#); [Abdallah et al., 2017](#)) did not confirm the interaction. This might be explained by differences in dose or infusion speed of ketamine or differences in drug metabolism and functional brain characteristics between TRD patients and healthy controls could contribute to the contrasting results. Interestingly, [Anand et al. \(2000\)](#) described an increasing effect on mood elevation in healthy individuals. These participants may have benefitted from the decrease of dissociative, psychiatric, and learning impairment symptoms, which could have resulted in increased awareness of mood-elevating effects. This, however, could reflect a different mechanism than antidepressant effects in patients with depression.

### Benzodiazepines

All papers reporting on benzodiazepines in combination with ketamine indicate an interaction. This could be the result of GABA-receptor agonism by benzodiazepines. By increasing the inhibitory tone of GABAergic interneurons, benzodiazepines

Table 5. Haloperidol

| Source (1st author, year) | Study design                                       | No. of participants (males)      | Population   | Drug, dosage, and route of administration   | Ketamine dosage, route of administration (and duration)   | Clinical outcome   | Possible mechanism  | Remarks   |
|---------------------------|--|----------------------------------|--|---|---|--|---|---|
| Krystal et al. (1999)     | Randomized, double-blind, placebo-controlled trial | 34 (10) (20 completed the study) | Healthy individuals  | Haloperidol, 5 mg oral, or placebo 2 hours before saline or ketamine infusion   | Ketamine IV, bolus of 0.26 mg/kg followed by 0.65 mg/kg/h or placebo (saline) infusion  | Haloperidol pretreatment reduced ketamine-induced impairments in executive cognitive functions as assessed with WCST and Gorham's Proverb's test and anxiogenic effects of ketamine measured with VAS. Production of BPRS positive and negative symptoms as induced by ketamine, perceptual changes similar to dissociative states, amnesic effects, euphoric effects and attention impairments not reduced by haloperidol. Haloperidol increased sedative and (in men) prolactin responses to ketamine. | Capacity of haloperidol to reduce ketamine effects on WCST and to improve capacity to interpret proverbs abstractly suggests that these medications interact to modulate cognitive functions associated with networks involving frontal cortex. Haloperidol pretreatment may have prevented ketamine-induced impairments in cognitive functions associated with frontal cortex by blocking consequences of excessive D2 receptor stimulation while permitting possible beneficial effects of enhanced D1 and D5 receptor stimulation to continue unimpeded. |   |
| Lahiti et al. (1995)      | Double-blind, placebo-controlled trial             | 9 (5)                            | Patients with schizophrenia. All individuals were actively psychotic, but stable | Haloperidol, fixed dose of 0.3 mg/kg/d for 4 wk. Compared with ketamine administration after drug-free period of 4–8 wk | Ketamine IV, 3 doses (0.1, 0.3, and 0.5 mg/kg) over 60 sec vs 1 placebo infusion  | Ketamine increased total BPRS score significantly in patients on haloperidol for 0.3- (P = 0.005) and 0.5- (P = 0.1) mg/kg dose. Increase in BPRS total and psychosis score not statistically different between conditions. Haloperidol did not prevent a ketamine-induced worsening of mental status.   | These data suggest that antagonism of NMDA-sensitive glutamatergic transmission in brain exacerbates symptoms of schizophrenia.   |   |
| Oranje et al. (2009)      | Randomized double-blind, placebo-controlled trial  | 18 (18)                          | Healthy individuals  | Haloperidol, 2 mg oral or placebo   | Ketamine IV, 0.3 mg/kg during loading phase (first 40 min), 0.0495 mg/kg during the next 10 min, and 0.213 mg/kg for sustaining phase (last 85 min) | Placebo/ketamine reduced both processing negativity and P300 amplitude. In contrast to P300 amplitude, disruptive effect of ketamine on processing negativity could be prevented by pretreatment with haloperidol (P < .05).   | Current results suggest that ketamine reduced P300 amplitude by its antagonistic effect on glutamatergic activity, while it reduced processing negativity by its agonistic effect on D2 activity.   | Processing negativity is a negative deflection in the ERP appearing above the (pre)frontal areas of the brain, whenever healthy individuals are asked to selectively attend to stimuli defined by certain features, while ignoring others. P300 amplitude is elicited by infrequent stimuli appearing in a sequence of frequent stimuli. Maximum P300 amplitude is commonly found when the subject is requested to respond to these deviant stimuli, e.g. by pressing a button. |

Abbreviations: BPRS, Brief Psychiatric Rating Scale; D1/D2, dopamine receptor 1/2/5; -aspartate receptor; ERP, event-related potential; IV, intravenous; NMDAR, N-methyl-D,L-VAS, Visual Analog mood Scale; WCST, The Wisconsin Card Sorting Test.



Table 6. Risperidone

| Source (1 <sup>st</sup> author, year) | Study design  | No. of participants (males)      | Population   | Drug, dosage and route of administration | Ketamine dosage, route of administration (and duration)   | Clinical outcome   | Possible mechanism   | Remarks   |
|---------------------------------------|---|----------------------------------|--|--|---|--|--|---|
| Doyle et al. (2013)                   | Randomized, double-blind, placebo-controlled, crossover trial | 20 (20) (16 completed the study) | Healthy individuals<br>Same sample as Joules et al. (2015) and Shcherbinin et al. (2015) | Risperidone, 2 mg or placebo             | Ketamine IV, (mean $\pm$ S.D.) 0.12 $\pm$ 0.003 mg/kg during the first minute followed by a pseudo-continuous infusion of approximately 0.31 mg/kg/h or placebo (saline) infusion | The ROI analysis revealed a significant BOLD response to ketamine infusion relative to saline in pMRI ( $P < .001$ ). Risperidone attenuated the ketamine effect across most ROIs, including the medial prefrontal and cingulate regions and the thalamus. No effects were observed in the striatum. For the negatively responding regions in the subgenual cingulate and ventromedial prefrontal cortex, risperidone strongly attenuated the negative BOLD response ( $P < .001$ ). | Risperidone has high affinity for D2 receptors, which may conceivably have an impact on its interaction with ketamine. Given the high density of D2 receptors in striatum and lack of effects of risperidone on ketamine-induced BOLD changes in striatum, this supports the proposal that antagonism at 5-HT <sub>2A</sub> R is the prevailing mechanism underlying risperidone-induced attenuation of ketamine BOLD response via attenuated glutamate release. | ROI's responsive to ketamine were prespecified based on previous studies, including the anterior cingulate cortex, supragenual paracingulate cortex, thalamus, posterior cingulate cortex, supplementary motor area, left anterior insula, right anterior insula, left operculum, right operculum, precuneus, and medial occipital lobes. |

Table 6. Continued

| Source (1 <sup>st</sup> author, year) | Study design  | No. of participants (males)  | Population                       | Drug, dosage and route of administration | Ketamine dosage, route of administration (and duration)   | Clinical outcome   | Possible mechanism  | Remarks   |
|---------------------------------------|---|--|----------------------------------|--|---|--|---|---|
| Joules et al. (2015)                  | Randomized, double-blind, placebo-controlled, crossover trial | 20 (20) (16 completed the study)<br>Same sample as Doyle et al. (2013) and Shcherbinin et al. (2015) | Right handed healthy individuals | Risperidone, 2 mg oral or placebo        | Ketamine IV, (mean $\pm$ S.D.) 0.12 $\pm$ 0.003 mg/kg during the first minute followed by a pseudo-continuous infusion of approximately 0.31 mg/kg/h or placebo (saline) infusion | When compared with placebo, ketamine increased DC in pHMRI. ( $P < .003$ )<br>Risperidone pre-treatment significantly modulated the ketamine-induced centrality changes. ( $P < .001$ ), resulting in increased DC in the frontal and temporal cortices and decreased DC in the basal ganglia, occipital and parietal regions. Furthermore, the ORGP results suggest risperidone does not attenuate the ketamine DC response in an ordinal manner; instead, the combined results support the conclusion that risperidone may have an opposing effect on the ketamine response. | The authors theorize that it is the twofold mechanism of risperidone acting upon ketamine that is responsible for the observed DC effects. It is likely that the potentiation of the NMDAR is the primary mechanism. The results are suggestive that risperidone may interact with, and in opposition to ketamine resulting in a pattern of DC dissimilar to that of ketamine; the dissimilarity from the saline state and ordinal regression results preclude a linear attenuation effect of risperidone on ketamine. These observations may be predominantly due to serotonergic effects. In addition to the NMDAR, ketamine also has affinity for other receptors including dopamine, D2 and opioid receptors, particularly at high doses, effects can also be elicited through downstream serotonergic and muscarinic receptors. Whilst they cannot preclude effects at other receptors | DC is defined as the number of links incident upon a node (i.e., the number of ties that a node has). |

Table 6. Continued

| Source<br>(1 <sup>st</sup> author, year) | Study<br>design   | No. of participants<br>(males) | Population          | Drug, dosage and<br>route of adminis-<br>tration | Ketamine dosage,<br>route of adminis-<br>tration (and duration) | Clinical outcome  | Possible mechanism  | Remarks   |
|--|---|--------------------------------|---------------------|--|---|---|---|---|
| Schmehchtig et al.<br>(2013)             | Randomized double-<br>blind, placebo-<br>controlled study | 72 (35)                        | Healthy individuals | Risperidone, 2 mg<br>oral or placebo             | Ketamine IV, infusion<br>of 100 mg ml <sup>-1</sup>             | Ketamine<br>increased<br>saccadic<br>frequency and<br>decreased<br>velocity gain<br>of SPEM (all<br>P < .01) but had<br>no significant<br>effects on PS or<br>AS. Risperidone<br>did not reverse<br>ketamine-<br>induced<br>deteriorations. | contributing to our<br>findings, they<br>would favour a<br>major contribution<br>from glutamatergic<br>effects. The opposing<br>effects of ketamine<br>and risperidone<br>in the striatum<br>may conceivably<br>be related to their<br>opposing effects<br>at the D2 receptor,<br>where risperidone<br>acts as an antagonist<br>and ketamine an<br>agonist. | This indicates that<br>risperidone did<br>not attenuate<br>ketamine oculomotor<br>performance deficits. |

Table 6. Continued

| Source (1 <sup>st</sup> author, year) | Study design                                    | No. of participants (males)   | Population          | Drug, dosage and route of administration | Ketamine dosage, route of administration (and duration)  | Clinical outcome  | Possible mechanism       | Remarks |
|---------------------------------------|---|---|---------------------|--|--|---|--------------------------|---------|
| Shcherbinin et al. (2015)             | Randomized, placebo-controlled, crossover trial | 20 (20) (16 completed the study)<br>Same sample as Doyle et al. (2013) and Joules et al. (2015) | Healthy individuals | Risperidone, 2 mg oral, or placebo       | Ketamine IV, 0.12±0.003 mg/kg in the first minute, followed by a pseudo-continuous infusion at a rate of approximately 0.31 mg/kg/h or saline infusion | Ketamine showed positive weights (post-ketamine > pre-ketamine) in prefrontal and cingulate regions, thalamus and lateral parietal cortex with strongest negative contributions in the occipital lobes during phMRI. However, these effects were only nominally significant in the univariate, voxel-level analysis, using a very liberal cluster forming threshold and only when the perfusion maps were global signal corrected. ROI-level univariate analyses did not detect significant effects. Pre-treatment with risperidone significantly increased the ketamine-induced perfusion changes. | No hypothesis described. |         |

Abbreviations: 5-HT<sub>2A</sub>R, 5-hydroxytryptamine 2A receptor; AS, antisaccades; BOLD, blood oxygenation level-dependent; D<sub>2</sub>, dopamine receptor 2; DC, degree centrality; IV, intravenous; NMDAR, N-methyl-D-aspartate receptor; ORGP, Ordinal regression using Gaussian processes; phMRI, pharmacological magnetic resonance imaging; PS, prosaccades; ROI, Regions of interest; SPEM, smooth pursuit eye movement.

Table 7. Clozapine

| Source (1st author, year)  | Study design  | No. of participants (males) | Population  | Drug, dosage, and route of administration   | Ketamine dosage, route of administration (and duration)   | Clinical outcome  | Possible mechanism  | Remarks              |
|----------------------------|---|-----------------------------|---|---|---|---|---|----------------------|
| Lipschitz et al. (1997)    | Randomized, double-blind, placebo-controlled, crossover trial | 7 (4)                       | Healthy individuals   | Clozapine, 50 mg or placebo pretreatment  | Ketamine IV, 0.5mg/kg over 60 minutes   | Clozapine pretreatment did not reduce the BPRS 5 key positive or 3 key negative scores, but there was a trend for a reduction in perceptual alteration as measured by the CADSS ( $P = .09$ ).  | No hypothesis described.  | Conference abstract. |
| Malhotra et al. (1997)     | Randomized, double-blind, placebo-controlled, crossover trial | 10 (6)                      | Patients meeting DSM-III-R criteria for schizophrenia or schizoaffective disorder (2 patients entered the study APD free) | Clozapine, [mean dose = 430 ( $\pm 48.3$ ) mg/d for 51.8 ( $\pm 17.7$ ) d] followed by ketamine/placebo infusion after drug-free period (mean drug-free period = 20.5 [ $\pm 9.0$ ] d for 8 patients) | Ketamine IV, bolus of 0.12 mg/kg followed by infusion of 0.65 mg/kg of ketamine (maximum dose of 58 mg) vs placebo (saline) bolus followed by infusion of total dose of 0.77 mg/kg over 1 h | Clozapine treatment significantly blunted the ketamine-induced BPRS positive symptoms ( $P = .05$ ), but not negative symptoms, paranoia, or anxiety-depression. Clozapine specifically blunted ketamine-induced conceptual disorganization. ( $P = .05$ )  | It is tempting to speculate that these patients' resistant psychotic symptoms may be related to NMDAR dysfunction and are therefore more amenable to clozapine, rather than typical, antipsychotic therapy. |                      |
| Voltenweider et al. (2012) | Randomized, double-blind, placebo-controlled trial            | 20 (20)                     | Healthy individuals   | Clozapine, 30 mg oral or placebo  | S-ketamine, 0.006mg/kg/min  | S-ketamine produced positive symptoms and cognitive disturbances that were differentially associated with increased brain activity in an extended neural network including prefrontal regions, anterior cingulate, putamen, thalamus and temporomedial and insular cortex (as measured with H1250-PET). Reduced activity was found in parietal and occipital cortex regions, and cerebellum ( $P < .00001$ ). Pretreatment with clozapine moderately reduced some S-ketamine-induced symptoms and partially reversed alterations in anterior cingulate, insula, temporomedial cortex, and cerebellum. | These findings suggest disruption of NMDAR but not of 5HT2AR-mediated neurotransmission within fronto-temporal-striato-thalamic pathways mainly contributes to ketamine-induced psychotic symptoms.         | Conference abstract. |

Abbreviations: 5-HT2AR, 5-hydroxytryptamine 2A receptor; APD free, Antipsychotic drug free; BPRS, Brief Psychiatric Rating Scale; CADSS, Clinician-Administered Dissociative States Scale; DSM, Diagnostic and Statistical Manual; H2150-PET, H2150-positron emission tomography; IV, Intravenous; NMDAR, N-methyl-D-aspartate receptor.

Table 8. Olanzapine

| Source (1st author, year) | Study design  | No. of participants (males) | Population  | Drug, dosage, and route of administration  | Ketamine dosage, route of administration (and duration) | Clinical outcome  | Possible mechanism       | Remarks              |
|---------------------------|---|-----------------------------|---|--|---|---|--------------------------|----------------------|
| Lahti et al. (1999)       | Randomized, double-blind, placebo-controlled, crossover trial | 5                           | Healthy individuals (5) and unknown number of patients with schizophrenia | Olanzapine, 5 mg for healthy individuals and 10 mg for patients with schizophrenia vs placebo 5 h prior to ketamine infusion | Ketamine IV, 0.3 mg/kg or saline IV                     | Both dosages (5 mg and 10 mg olanzapine) were no different than placebo in blocking ketamine-induced psychosis in respectively normal and schizophrenic volunteers. | No hypothesis described. | Conference abstract. |

Abbreviations: IV, intravenous.

might decrease excitatory glutamatergic signal transduction and attenuate the antidepressant effects of ketamine. Moreover, an animal study (Eintrei et al., 1999) has shown a ketamine-induced enhanced metabolism in the limbic system, and this action is selectively blocked by administration of diazepam. Ketamine-induced dopamine release was similarly blocked by diazepam as reported by another animal study (Irifune et al., 1998).

### MAOIs

Both included case reports on S-ketamine in combination with tranylcypromine correspond to previous literature stating no relevant cardiovascular or hemodynamic changes (Doyle, 1990; Bartova et al., 2015; Dunner et al., 2019). Also, no serotonergic syndrome has been reported in the combination of MAOIs and ketamine, but clinical experience is limited. An increase in monoamines is probably not the most relevant pharmacodynamic effect of ketamine.

### Antipsychotics

An interaction with the dopamine D<sub>2</sub> receptor antagonist haloperidol can be expected because ketamine shows modest activity at the dopamine transporter at subanesthetic doses. Two studies in healthy individuals reported a reduction in ketamine-induced effects (impairments in executive cognitive functions, anxiogenic effects, and processing negativity) with haloperidol pretreatment. This implies that these effects of ketamine are caused by its (direct or indirect) agonistic effect on dopaminergic D<sub>2</sub> receptor activity. The only study investigating patients with schizophrenia on and off a high dose of haloperidol did not find blunting effects on ketamine-induced psychosis. These results suggest that the mechanism by which ketamine causes psychotic symptoms is not affected by D<sub>2</sub> blockade.

We found no studies investigating the effects of an interaction between risperidone and ketamine on the clinical antidepressant effect or side effects. Risperidone had no effect on ketamine-induced changes in eye movements, which are biomarkers in drug development and the evaluation of treatment effects (Sweeney et al., 1998; Levy et al., 2010). However, 3 imaging studies showed attenuating effects of risperidone on ketamine's brain perfusion changes in healthy individuals (Doyle et al., 2013; Joules et al., 2015; Shcherbinin et al., 2015). The opposing effects of ketamine and risperidone at the D<sub>2</sub> receptor, similar to the interaction with haloperidol, may play a role here. Furthermore, 5-hydroxytryptamine<sub>2A</sub> receptor antagonism by risperidone might also mitigate the effects of ketamine. Although no clear conclusions can be drawn from these case reports, a few examples of concomitant ketamine and risperidone use in patients with depression suggest that use of risperidone does not attenuate ketamine's antidepressant effects in doses of 1–4 mg/d (Zigman and Blier, 2013; López-Díaz et al., 2017; Zheng et al., 2018).

The results of 3 studies investigating clozapine and ketamine were inconsistent. No significant interaction was reported in the study investigating a low dose of clozapine (50 mg) on ketamine's effects on the BPRS and CADSS in healthy individuals. On the other hand, an even lower dose of 30 mg clozapine did reduce some of the S-ketamine responses on neuroimaging outcomes. Furthermore, a higher dose of clozapine (mean 430 mg) did alter ketamine's positive symptoms in patients with schizophrenia. The differences in participant characteristics, dosages, and ketamine formulation (racemic vs S-ketamine) are

reason to compare and interpret the results with caution. Dose-response studies with clozapine show that doses of at least 300–600 mg/d are required to achieve a therapeutic response in patients (VanderZwaag et al., 1996; Simpson et al., 1999). Clozapine is a relatively weak antagonist at striatal dopamine D<sub>2</sub>-receptors and produces a more potent blockade of central dopamine D<sub>1</sub>, cholinergic, serotonergic 5HT<sub>2</sub>, histamine H<sub>1</sub>, and adrenergic α<sub>1</sub> and α<sub>2</sub> receptors (Fitton and Heel, 1990).

One paper found no blocking of ketamine induced psychotic symptoms with olanzapine, which corresponds to the results with haloperidol but is in contrast with higher doses of clozapine. Some evidence from uncontrolled trials suggests that concomitant use of olanzapine may attenuate the antidepressant effects of ketamine or S-ketamine. One patient with TRD receiving olanzapine 10 mg (in addition to lithium, mirtazapine, and zopiclone 11.25 mg) did not achieve response or remission (Hamilton Depression Rating Scale scores decreased from 19 to 11) after 6 infusions 0.25 mg/kg S-ketamine (Segmiller et al., 2013). The open label study of Zheng et al. (2018) reports olanzapine use (2.5–20 mg/d) in 22.7% of responders and 25.8% of non-responders to 6 ketamine infusions of 0.5 mg/kg in patients with depression. It should be noted that other causes of reduced antidepressant effect cannot be excluded in these reports.

### Limitations

The present study should be interpreted in light of some limitations. First, our review contains multiple conference abstracts (n=4) that have not been published in peer-reviewed full text. Second, the studies have small sample sizes, ranging from 1 to 72 participants. As the different outcomes in patients and healthy individuals of the clozapine studies show, the underlying mechanism of the interaction may be different in patients than in healthy individuals. In addition, there may be a concentration-dependent effect regarding interactions. Many studies included in this review used ketamine as a model for psychosis. In these studies, the focus is not necessarily on exploring an interaction with respect to the antidepressant effect of ketamine. Furthermore, results were based on various intervention methods (racemic vs S-ketamine and different dosages, intermittent/bolus administration vs continuous infusion) and outcome measures, which complicates comparison of the trials. Finally, the case reports gave new insights but have to be interpreted with great caution due to limited generalizability.

### Conclusion

In conclusion, this systematic review provides new insights for the clinical practitioner. The pharmacodynamic interactions between ketamine and generally prescribed psychiatric drugs were analyzed based on published evidence. The literature provided no reports of an interaction between lithium and ketamine. Some but not all studies on lamotrigine provided evidence for attenuation of ketamine-induced effects. Based on the available literature, it is very likely that benzodiazepines shorten the duration of ketamine's antidepressant effects. This should be taken into account when considering ketamine treatment. In addition, several cases suggested that no relevant changes in vital signs occurred when ketamine was combined with the MAOI tranylcypromine. There are indications for an interaction between the antipsychotic drugs haloperidol, risperidone, and clozapine but not evidently for olanzapine in combination with ketamine. No information was found yet about ketamine's possible interactions with psychostimulants.

### Clinical Implications and Future Directions

Clinical practitioners should be aware of possible drug-to-drug interactions when prescribing ketamine. To optimize treatment effects, we would recommend minimizing benzodiazepine (and Z-drug) use in patients receiving ketamine for depression. Furthermore, a possible interaction with lamotrigine should be considered when patients show a lack of response to ketamine during concomitant lamotrigine use. We believe prescribing ketamine as add-on to lower doses of MAOI is possible but only with careful monitoring of vital signs.

For future studies, we recommend trials focusing on the antidepressant efficacy and side effects of the combination of ketamine and psychiatric drugs in patients with depression. It would, for instance, be worthwhile to investigate whether lower doses of benzodiazepines, or temporary benzodiazepine withdrawal before ketamine administration, could prevent an efficacy attenuating interaction. Additional research on the safety of combining ketamine and MAOIs is warranted. Furthermore, we suggest that researchers and clinicians systematically record and report the use of co-medication in ketamine trials to detect possible interactions.

### Supplementary Materials

Supplementary data are available at *International Journal of Neuropsychopharmacology (IJNPPY)* online.

### Author Contributions

JKEV: provided the conception and design of the study, acquisition of data, analysis and interpretation of data, drafted the article, revised it critically for important intellectual content, final approval of the version to be submitted, and agreement to be accountable for all aspects of the work. SYSA: interpretation of data, critical revision for important intellectual content, final approval of the version to be submitted and agreement to be accountable for all aspects of the work. IMB: acquisition of data, analysis and interpretation of data, drafted the article, final approval of the version to be submitted and agreement to be accountable for all aspects of the work. BAEV: acquisition of data, analysis and interpretation of data, drafted the article, final approval of the version to be submitted and agreement to be accountable for all aspects of the work. JK: interpretation of data, critical revision for important intellectual content, final approval of the version to be submitted and agreement to be accountable for all aspects of the work. RAS: interpretation of data, critical revision for important intellectual content, final approval of the version to be submitted and agreement to be accountable for all aspects of the work. DJT: provided the conception and design of the study, analysis and interpretation of data, critical revision for important intellectual content, final approval of the version to be submitted and agreement to be accountable for all aspects of the work.

### Statement of Interest

J.K.E. Veraart received a speakers fee from Janssen Pharmaceuticals, outside the submitted work. R.A. Schoevers received research funding for 2 randomized clinical trials with generic oral esketamine from the Netherlands Organisation for Health Research & Development and the National Health Care Institute, a speakers fee from Janssen Pharmaceuticals, and consultancy fee from Clexio biosciences, both outside the submitted work. D.J. Touw received research grants from ZONMW and Chiesi Pharmaceuticals outside this work. He is a member

of the advisory boards from Sanquin and PureIMS outside this work. S.Y. Smith-Apeldoorn, I.M. Bakker, B.A.E. Visser, and J. Kamphuis report no competing interests.

## References

- Abdallah CG, Averill CL, Salas R, Averill LA, Baldwin PR, Krystal JH, Mathew SJ, Mathalon DH (2017) Prefrontal connectivity and glutamate transmission: relevance to depression pathophysiology and ketamine treatment. *Biol Psychiatry Cogn Neurosci Neuroimaging* 2:566–574.
- Albott CS, Shiroma PR, Cullen KR, Johns B, Thuras P, Wels J, Lim KO (2017) The Antidepressant Effect of Repeat Dose Intravenous Ketamine Is Delayed by Concurrent Benzodiazepine Use. *J Clin Psychiatry* 78:e308–e309.
- Anand A, Charney DS, Oren DA, Berman RM, Hu XS, Cappiello A, Krystal JH (2000b) Attenuation of the neuropsychiatric effects of ketamine with lamotrigine: support for hyperglutamatergic effects of N-methyl-D-aspartate receptor antagonists. *Arch Gen Psychiatry* 57:270–276.
- Andrashko V, Novak T, Horacek J, Klirova M, Brunovsky M (2019) Concurrent benzodiazepines undermine the antidepressant effect of ketamine. *Eur Neuropsychopharmacol* 29:S389–S390.
- Arabzadeh S, Hakkikazazi E, Shahmansouri N, Tafakhori A, Ghajar A, Jafarinia M, Akhondzadeh S (2018) Does oral administration of ketamine accelerate response to treatment in major depressive disorder? Results of a double-blind controlled trial. *J Affect Disord* 235:236–241.
- Bartova L, Vogl SE, Stamenkovic M, Praschak-Rieder N, Naderi-Heiden A, Kasper S, Willeit M (2015) Combination of intravenous S-ketamine and oral tranylcypromine in treatment-resistant depression: a report of two cases. *Eur Neuropsychopharmacol* 25:2183–2184.
- Bramer WM, Giustini D, de Jonge GB, Holland L, Bekhuis T (2016) De-duplication of database search results for systematic reviews in EndNote. *J Med Libr Assoc* 104:240–243.
- Costi S, Soleimani L, Glasgow A, Brallier J, Spivack J, Schwartz J, Levitch CF, Richards S, Hoch M, Wade E, Welch A, Collins KA, Feder A, Iosifescu DV, Charney DS, Murrough JW (2019) Lithium continuation therapy following ketamine in patients with treatment resistant unipolar depression: a randomized controlled trial. *Neuropsychopharmacology* 44:1812–1819.
- Deakin JF, Lees J, McKie S, Hallak JE, Williams SR, Dursun SM (2008) Glutamate and the neural basis of the subjective effects of ketamine: a pharmaco-magnetic resonance imaging study. *Arch Gen Psychiatry* 65:154–164.
- Doyle DJ (1990) Ketamine induction and monoamine oxidase inhibitors. *J Clin Anesth* 2:324–325.
- Doyle OM, De Simoni S, Schwarz AJ, Brittain C, O'Daly OG, Williams SC, Mehta MA (2013) Quantifying the attenuation of the ketamine pharmacological magnetic resonance imaging response in humans: a validation using antipsychotic and glutamatergic agents. *J Pharmacol Exp Ther* 345:151–160.
- Dunner D, Fugate R, Demopoulos C (2019) Safety and efficacy of esketamine nasal spray in a depressed patient who was being treated with tranylcypromine: a case report. *Neuropsychopharmacology* 44:298–298.
- Eintrei C, Sokoloff L, Smith CB (1999) Effects of diazepam and ketamine administered individually or in combination on regional rates of glucose utilization in rat brain. *Br J Anaesth* 82:596–602.
- EMA (2019) European Medicines Agency, Meeting highlights from the Committee for Medicinal Products for Human Use (CHMP), 14–17 October 2019. <https://www.ema.europa.eu/en/medicines/human/EPAR/spravato> Accessed October 18, 2019.
- FDA (2019) FDA approves new nasal spray medication for treatment-resistant depression; available only at a certified doctor's office or clinic. U.S. Food and Drug Administration. <https://www.fda.gov/news-events/press-announcements/fda-approves-new-nasal-spray-medication-treatment-resistant-depression-available-only-certified>. Accessed March 5, 2019.
- Fitton A, Heel RC (1990) Clozapine. A review of its pharmacological properties, and therapeutic use in schizophrenia. *Drugs* 40:722–747.
- Ford N, Ludbrook G, Galletly C (2015) Benzodiazepines may reduce the effectiveness of ketamine in the treatment of depression. *Aust N Z J Psychiatry* 49:1227.
- Frye MA, Blier P, Tye SJ (2015) Concomitant benzodiazepine use attenuates ketamine response: implications for large scale study design and clinical development. *J Clin Psychopharmacol* 35:334–336.
- Ghasemi M, Raza M, Dehpour AR (2010) NMDA receptor antagonists augment antidepressant-like effects of lithium in the mouse forced swimming test. *J Psychopharmacol* 24:585–594.
- Han Y, Chen J, Zou D, Zheng P, Li Q, Wang H, Li P, Zhou X, Zhang Y, Liu Y, Xie P (2016) Efficacy of ketamine in the rapid treatment of major depressive disorder: a meta-analysis of randomized, double-blind, placebo-controlled studies. *Neuropsychiatr Dis Treat* 12:2859–2867.
- Hu YD, Xiang YT, Fang JX, Zu S, Sha S, Shi H, Ungvari GS, Correll CU, Chiu HF, Xue Y, Tian TF, Wu AS, Ma X, Wang G (2016) Single i.v. ketamine augmentation of newly initiated escitalopram for major depression: results from a randomized, placebo-controlled 4-week study. *Psychol Med* 46:623–635.
- Ionescu DF, Felicione JM, Gosai A, Cusin C, Shin P, Shapero BG, Deckersbach T (2018) Ketamine-associated brain changes: a review of the neuroimaging literature. *Harv Rev Psychiatry* 26:320–339.
- Irifune M, Sato T, Kamata Y, Nishikawa T, Nomoto M, Fukuda T, Kawahara M (1998) Inhibition by diazepam of ketamine-induced hyperlocomotion and dopamine turnover in mice. *Can J Anaesth* 45:471–478.
- JBI (2020) Critical appraisal tools. <https://jbi.global/critical-appraisal-tools>
- Joules R, Doyle OM, Schwarz AJ, O'Daly OG, Brammer M, Williams SC, Mehta MA (2015) Ketamine induces a robust whole-brain connectivity pattern that can be differentially modulated by drugs of different mechanism and clinical profile. *Psychopharmacology* 232:4205–4218.
- Kasper S, Cubała WJ, Fagiolini A, Ramos-Quiroga JA, Souery D, Young AH (2020) Practical recommendations for the management of treatment-resistant depression with esketamine nasal spray therapy: basic science, evidence-based knowledge and expert guidance. *World J Biol Psychiatry* 1–15. doi: 10.1080/15622975.2020.1836399. [Online ahead of print.](#)
- Kishimoto T, Chawla JM, Hagi K, Zarate CA, Kane JM, Bauer M, Correll CU (2016) Single-dose infusion ketamine and non-ketamine N-methyl-d-aspartate receptor antagonists for unipolar and bipolar depression: a meta-analysis of efficacy, safety and time trajectories. *Psychol Med* 46:1459–1472.
- Kryst J, Kawalec P, Pilc A (2020) Efficacy and safety of intranasal esketamine for the treatment of major depressive disorder. *Expert Opin Pharmacother* 21:9–20.



- Krystal JH, Karper LP, Seibyl JP, Freeman GK, Delaney R, Bremner JD, Heninger GR, Bowers MB Jr, Charney DS (1994) Subanesthetic effects of the noncompetitive NMDA antagonist, ketamine, in humans. Psychotomimetic, perceptual, cognitive, and neuroendocrine responses. *Arch Gen Psychiatry* 51:199–214.
- Krystal JH, Karper LP, Bennett A, D'Souza DC, Abi-Dargham A, Morrissey K, Abi-Saab D, Bremner JD, Bowers MB Jr, Suckow RF, Stetson P, Heninger GR, Charney DS (1998) Interactive effects of subanesthetic ketamine and subhypnotic lorazepam in humans. *Psychopharmacology* 135:213–229.
- Krystal JH, D'Souza DC, Karper LP, Bennett A, Abi-Dargham A, Abi-Saab D, Cassello K, Bowers MB Jr, Vegso S, Heninger GR, Charney DS (1999) Interactive effects of subanesthetic ketamine and haloperidol in healthy humans. *Psychopharmacology* 145:193–204.
- Lahti AC, Koffel B, LaPorte D, Tamminga CA (1995) Subanesthetic doses of ketamine stimulate psychosis in schizophrenia. *Neuropsychopharmacology* 13:9–19.
- Lahti AC, Weiler MA, Parwani A, Holcomb HH, Michaelidis T, Warfel D, Tamminga CA (1999) Blockade of ketamine-induced psychosis with olanzapine. *Schizophr Res* 36:310.
- Levy DL, Sereno AB, Gooding DC, O'Driscoll GA (2010) Eye tracking dysfunction in schizophrenia: characterization and pathophysiology. *Curr Top Behav Neurosci* 4:311–347.
- Lipschitz DS, Dsouza DC, White JA, Charney DS, Krystal JH (1997) Clozapine blockade of ketamine effects in healthy subjects. *Biol Psychiatry* 41:76.
- López-Díaz Á, Fernández-González JL, Luján-Jiménez JE, Galiano-Rus S, Gutiérrez-Rojas L (2017) Use of repeated intravenous ketamine therapy in treatment-resistant bipolar depression with suicidal behaviour: a case report from Spain. *Ther Adv Psychopharmacol* 7:137–140.
- López-Díaz Á, Murillo-Izquierdo M, Moreno-Mellado E (2019) Off-label use of ketamine for treatment-resistant depression in clinical practice: European perspective. *Br J Psychiatry* 215:447–448.
- Malhi GS, Bell E, Bassett D, Boyce P, Bryant R, Hazell P, Hopwood M, Lyndon B, Mulder R, Porter R, Singh AB, Murray G (2021) The 2020 Royal Australian and New Zealand College of Psychiatrists clinical practice guidelines for mood disorders. *Aust N Z J Psychiatry* 55:7–117.
- Malhotra AK, Adler CM, Kennison SD, Elman I, Pickar D, Breier A (1997) Clozapine blunts N-methyl-D-aspartate antagonist-induced psychosis: a study with ketamine. *Biol Psychiatry* 42:664–668.
- Mathew SJ, Murrrough JW, aan het Rot M, Collins KA, Reich DL, Charney DS (2010) Riluzole for relapse prevention following intravenous ketamine in treatment-resistant depression: a pilot randomized, placebo-controlled continuation trial. *Int J Neuropsychopharmacol* 13:71–82.
- Mathew SJ, Carlos A, Zarate J (2016) Ketamine for treatment-resistant depression. The first decade of progress. Cham, Switzerland: Springer International Publishing AG.
- Memon RI, Naveed S, Faquih AE, Fida A, Abbas N, Chaudhary AMD, Qayyum Z (2020) Effectiveness and safety of ketamine for unipolar depression: a systematic review. *Psychiatr Q* 91:1147–1192.
- Nishimura M, Sato K (1999) Ketamine stereoselectively inhibits rat dopamine transporter. *Neurosci Lett* 274:131–134.
- Oranje B, Gispen-de Wied CC, Westenberg HG, Kemner C, Verbaten MN, Kahn RS (2009) Haloperidol counteracts the ketamine-induced disruption of processing negativity, but not that of the P300 amplitude. *Int J Neuropsychopharmacol* 12:823–832.
- Papakostas GI (2020) Maintaining rapid antidepressant effects following ketamine infusion: a major unmet need. *J Clin Psychiatry* 81:19r12859.
- Sackeim HA, Haskett RF, Mulsant BH, Thase ME, Mann JJ, Pettinati HM, Greenberg RM, Crowe RR, Cooper TB, Prudic J (2001) Continuation pharmacotherapy in the prevention of relapse following electroconvulsive therapy: a randomized controlled trial. *Jama* 285:1299–1307.
- Schmechtig A, Lees J, Perkins A, Altavilla A, Craig KJ, Dawson GR, William Deakin JF, Dourish CT, Evans LH, Koychev I, Weaver K, Smallman R, Walters J, Wilkinson LS, Morris R, Williams SC, Ettinger U (2013) The effects of ketamine and risperidone on eye movement control in healthy volunteers. *Transl Psychiatry* 3:e334.
- Segmiller F, Rüter T, Linhardt A, Padberg F, Berger M, Pogarell O, Möller HJ, Kohler C, Schüle C (2013) Repeated S-ketamine infusions in therapy resistant depression: a case series. *J Clin Pharmacol* 53:996–998.
- Shcherbinin S, Doyle O, Zelaya FO, de Simoni S, Mehta MA, Schwarz AJ (2015) Modulatory effects of ketamine, risperidone and lamotrigine on resting brain perfusion in healthy human subjects. *Psychopharmacology* 232:4191–4204.
- Simpson GM, Josiassen RC, Stanilla JK, de Leon J, Nair C, Abraham G, Odom-White A, Turner RM (1999) Double-blind study of clozapine dose response in chronic schizophrenia. *Am J Psychiatry* 156:1744–1750.
- Sweeney JA, Strojwas MH, Mann JJ, Thase ME (1998) Prefrontal and cerebellar abnormalities in major depression: evidence from oculomotor studies. *Biol Psychiatry* 43:584–594.
- Tso MM, Blatchford KL, Callado LF, McLaughlin DP, Stamford JA (2004) Stereoselective effects of ketamine on dopamine, serotonin and noradrenaline release and uptake in rat brain slices. *Neurochem Int* 44:1–7.
- VanderZwaag C, McGee M, McEvoy JP, Freudenreich O, Wilson WH, Cooper TB (1996) Response of patients with treatment-refractory schizophrenia to clozapine within three serum level ranges. *Am J Psychiatry* 153:1579–1584.
- Vollenweider FX, Andel D, Kometer M, Seifritz E, Schmidt A (2012) Effect of clozapine and ketanserin on S-ketamine-induced brain activation and psychotic symptoms in healthy humans. *Int J Neuropsychopharmacol* 15:27–28.
- Wilkinson ST, Sanacora G (2017) Considerations on the off-label use of ketamine as a treatment for mood disorders. *JAMA* 318:793–794.
- Xu AJ, Niciu MJ, Lundin NB, Luckenbaugh DA, Ionescu DF, Richards EM, Vande Voort JL, Ballard ED, Brutsche NE, Machado-Vieira R, Zarate CA Jr (2015) Lithium and valproate levels do not correlate with ketamine's antidepressant efficacy in treatment-resistant bipolar depression. *Neural Plast* 2015:858251.
- Zheng W, Zhou YL, Liu WJ, Wang CY, Zhan YN, Li HQ, Chen LJ, Li MD, Ning YP (2018) Rapid and longer-term antidepressant effects of repeated-dose intravenous ketamine for patients with unipolar and bipolar depression. *J Psychiatr Res* 106:61–68.
- Zigman D, Blier P (2013) Urgent ketamine infusion rapidly eliminated suicidal ideation for a patient with major depressive disorder: a case report. *J Clin Psychopharmacol* 33:270–272.