



Aalborg Universitet

AALBORG UNIVERSITY  
DENMARK

## De novo electrocardiographic abnormalities in persons living with HIV

Knudsen, Andreas D.; Graff, Claus; Nielsen, Jonas Bille; Thomsen, Magda Teresa; Høgh, Julie; Benfield, Thomas; Gerstoft, Jan; Køber, Lars; Kofoed, Klaus F.; Nielsen, Susanne D.

*Published in:*  
Scientific Reports

*DOI (link to publication from Publisher):*  
[10.1038/s41598-021-00290-x](https://doi.org/10.1038/s41598-021-00290-x)

*Creative Commons License*  
CC BY 4.0

*Publication date:*  
2021

*Document Version*  
Publisher's PDF, also known as Version of record

[Link to publication from Aalborg University](#)

*Citation for published version (APA):*  
Knudsen, A. D., Graff, C., Nielsen, J. B., Thomsen, M. T., Høgh, J., Benfield, T., Gerstoft, J., Køber, L., Kofoed, K. F., & Nielsen, S. D. (2021). De novo electrocardiographic abnormalities in persons living with HIV. *Scientific Reports*, 11(1), [20750]. <https://doi.org/10.1038/s41598-021-00290-x>

### General rights

Copyright and moral rights for the publications made accessible in the public portal are retained by the authors and/or other copyright owners and it is a condition of accessing publications that users recognise and abide by the legal requirements associated with these rights.

- Users may download and print one copy of any publication from the public portal for the purpose of private study or research.
- You may not further distribute the material or use it for any profit-making activity or commercial gain
- You may freely distribute the URL identifying the publication in the public portal -

### Take down policy

If you believe that this document breaches copyright please contact us at [vbn@aub.aau.dk](mailto:vbn@aub.aau.dk) providing details, and we will remove access to the work immediately and investigate your claim.



OPEN

## De novo electrocardiographic abnormalities in persons living with HIV

Andreas D. Knudsen<sup>1,2</sup>, Claus Graff<sup>3</sup>, Jonas Bille Nielsen<sup>2</sup>, Magda Teresa Thomsen<sup>1</sup>, Julie Høgh<sup>1</sup>, Thomas Benfield<sup>4</sup>, Jan Gerstoft<sup>1</sup>, Lars Køber<sup>2</sup>, Klaus F. Kofoed<sup>2,5</sup> & Susanne D. Nielsen<sup>1</sup>✉

Persons living with HIV (PLWH) may have increased incidence of cardiovascular events and longer QTc intervals than uninfected persons. We aimed to investigate the incidence and risk factors of de novo major electrocardiogram (ECG) abnormalities and QTc prolongation in well-treated PLWH. We included virologically suppressed PLWH without major ECG abnormalities, who attended the 2-year follow-up in the Copenhagen comorbidity in HIV infection (COCOMO) study. ECGs were categorized according to Minnesota Code Manual. We defined de novo major ECG abnormalities as new major Minnesota Code Manual abnormalities. Prolonged QTc was defined as QTc > 460 ms in females and QTc > 450 ms in males. Of 667 PLWH without major ECG abnormalities at baseline, 34 (5%) developed de novo major ECG abnormalities after a median of 2.3 years. After adjustment, age (RR: 1.57 [1.08–2.28] per decade older), being underweight (RR: 5.79 [1.70–19.71]), current smoking (RR: 2.34 [1.06–5.16]), diabetes (RR: 3.89 [1.72–8.80]) and protease inhibitor use (RR: 2.45 [1.27–4.74]) were associated with higher risk of getting de novo major ECG abnormalities. Of PLWH without prolonged QTc at baseline, only 11 (1.6%) participants developed de novo prolonged QTc. Five percent of well-treated PLWH acquired de novo major ECG abnormalities and protease inhibitor use was associated with more than twice the risk of de novo major ECG abnormalities. De novo prolonged QTc was rare and did not seem to constitute a problem in well-treated PLWH.

Persons living with HIV (PLWH) have increased risk of cardiovascular disease (CVD), and the rate of sudden cardiac death in PLWH may be as high as 4.5 times of that expected in the uninfected population<sup>1,2</sup>. The resting surface electrocardiogram (ECG) is a widely used tool for assessing and diagnosing cardiac disease, and incident or persistent resting ECG abnormalities are associated with higher risk of subsequent CVD<sup>3,4</sup>. We recently reported higher odds of pathological Q-waves and prolonged corrected QT interval (QTc), markers of coronary artery disease and sudden cardiac death, respectively, among PLWH than among uninfected controls<sup>5</sup>, but little is known about incidence of ECG abnormalities in PLWH.

The pathophysiological mechanisms underlying coronary artery disease and QTc prolongation in PLWH are incompletely understood, but traditional risk factors, such as smoking, are thought to contribute. In addition, HIV-related risk factors including chronic inflammation and use of protease inhibitors as well as specific non-nucleoside reverse transcriptase inhibitors, such as efavirenz and rilpivirine, have been associated with ischemic heart disease and QTc prolongation, respectively<sup>6–11</sup>.

Knowledge about incidence, determinants and risk factors of de novo major ECG abnormalities and abnormal repolarization in PLWH may help identify persons at risk who could profit from closer follow-up and more aggressive management.

The aims of our study were to investigate de novo major ECG abnormalities and prolongation of the QTc interval in a population of well-treated PLWH. We furthermore sought to identify predictors of de novo ECG abnormalities. We hypothesised that both traditional and HIV-related variables, specifically efavirenz, rilpivirine

<sup>1</sup>Viro-immunology Research Unit, Department of Infectious Diseases 8632, Copenhagen University Hospital, Rigshospitalet, University of Copenhagen, Blegdamsvej 9B, 2100 Copenhagen, Denmark. <sup>2</sup>Department of Cardiology, The Heart Center, Rigshospitalet, University of Copenhagen, Copenhagen, Denmark. <sup>3</sup>Department of Health Science and Technology, Aalborg University, Aalborg, Denmark. <sup>4</sup>Department of Infectious Diseases, Hvidovre Hospital, University of Copenhagen, Hvidovre, Denmark. <sup>5</sup>Department of Radiology, Rigshospitalet, University of Copenhagen, Copenhagen, Denmark. ✉email: sdn@dadlnet.dk

and protease inhibitors, would be associated with de novo prolonged QTc interval and de novo major ECG abnormalities.

## Methods

**Study population.** Participants were recruited from the Copenhagen Co-morbidity in HIV Infection (COCOMO) Study (NCT02382822). The COCOMO study is a non-interventional cohort study with the aim of assessing the burden and pathogenesis of non-AIDS comorbidities in PLWH<sup>5,12</sup>. Inclusion criteria were a positive HIV test and age older than 18 years. Between March 2015 and December 2016, 1099 participants were enrolled in the study, representing more than 40% of PLWH residing in the Copenhagen area. The procedures for recruitment and data collection have been described in detail elsewhere<sup>12</sup>. All participants provided oral and written informed consent before study inclusion. The COCOMO study (H-8-2014-0004) has been approved by the Ethics Committee of the Capital Region and the Danish Data Protection Agency. All procedures were performed in accordance with relevant guidelines and regulations.

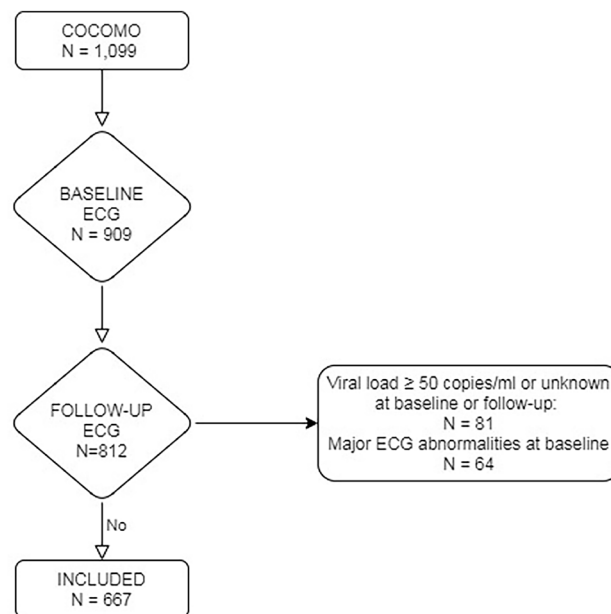
At enrolment, participants answered structured questionnaires to collect information regarding medical history, symptoms, smoking, alcohol consumption and use of medication. Furthermore, a physical exam including anthropometrics and blood pressure measurements was performed. All clinical examinations were performed by trained clinical staff. Low density lipoprotein (LDL) was collected from blood samples. HIV-related characteristics including mode of transmission, HIV-RNA, CD4 T cell count, CD4 nadir, time since HIV diagnosis, history of AIDS, history of antiretroviral therapy, and use of Methadone were obtained through review of the patients' medical records. All participants were offered to have a 12-lead resting ECG recorded. Between March 2017 and December 2018, all COCOMO participants were invited to attend a two-year follow-up examination with repeat physical exam, questionnaire, and a 12-lead ECG. A review of medical records for signs of cardiac events between study entry and December 2018, at which time inclusion for two-year follow-up ended, were conducted. For this study, we included participants with suppressed viral load (< 50 copies/mL) at both baseline and follow-up, an available ECG from both baseline and from the two-year follow-up, and no major ECG abnormalities at baseline.

**Definitions.** Demographic information was defined according to status at enrolment. We defined hypertension in accordance with the International Society of Hypertension and European guidelines, as current anti-hypertensive treatment and/or systolic blood pressure  $\geq 140$  mmHg and/or diastolic blood pressure  $\geq 90$  mmHg at enrolment<sup>13,14</sup>. Body mass index (BMI) was defined according to the WHO classification (< 18.5 underweight, 18.5–24.99 normal weight, 25–29.99 overweight and  $\geq 30$  kg/m<sup>2</sup> obese). Heavy drinking was defined according to The National Institute on Alcohol Abuse and Alcoholism (NIAAA) in the United States' definition as more than 14 standard drinks per week on average (one drink is defined as 14 g of alcohol)<sup>15</sup>. Marijuana use was defined as self-reported use of marijuana. Monthly use of recreational drugs was defined as self-reported use of recreational drugs other than alcohol and marijuana (e.g. Cocaine, ecstasy, heroin, benzodiazepine, amphetamine) more than once a month on average. Low CD4 cell count nadir was defined as below 200 cells/ $\mu$ L. Protease inhibitor use was defined as use of one or more HIV protease inhibitors (class stem *-navigir*) at baseline. Methadone status was dichotomised as yes/no at baseline and at follow up. As there were no changes in methadone status among the participants, methadone status was collapsed into a single variable. Cardiac events were defined according to the International Classification of Diseases v10 list of cardiac diagnoses (ICD-10) as one or more of the following: I20–I25 (ischaemic heart diseases) or I30–I52 (other forms of heart disease). Cardiac events were recorded from medical records if they occurred between baseline and end of two-year follow-up.

**ECG recording.** ECGs were recorded at baseline and after two years. At both baseline and two-year follow-up, ECGs were recorded by trained medical professionals at Rigshospitalet University Hospital using a CardioSoft electrocardiograph Module and CardioSoft v6.7 Diagnostic System (GE Healthcare) software. Participants were placed in supine position and instructed not to speak or make any movements while recording. The operator allowed the software one minute to calibrate. A retrospective resting ECG of the preceding 10 s was only recorded and stored when all lead readings were calibrated, and no preventable muscular interference was visible.

Recorded ECGs were transferred to the MUSE Cardiology Information System (GE Healthcare, Wauwatosa, WI) (pseudo anonymized) in standard 12-lead format. In case of multiple stored ECGs on one examination day, the last ECG was used.

**Electrocardiographic outcomes.** ECGs were coded according to the Minnesota code manual for electrocardiographic findings (MC) and the validated Marquette 12SL algorithm (Software version 243)<sup>16</sup>. The algorithm defines a median complex for each lead and a global median complex for each ECG. Criteria for major MC ECG abnormalities were any of the following (see also supplement 1): Major Q-wave abnormalities (MC 1.1 or 1.2); Minor Q-wave abnormalities plus ST-T abnormalities (MC 1.3 plus MC 4.1 or 4.2, or 5.1 or 5.2); Major Isolated ST-T abnormalities (MC 4.1 or 4.2 or 5.1 or 5.2); intraventricular block (MC 7.1 or 7.2 or 7.4); Right bundle branch block with left anterior hemiblock (MC 7.8); Left ventricular hypertrophy plus ST-T abnormalities (MC 3.1 plus MC 4.1 or 4.2 or 5.1 or 5.2); Major QT prolongation ( $QTI \geq 116\%$ ); Atrial Fibrillation or Flutter (MC 8.3); Major AV conduction abnormalities including third-degree AV block (MC 6-1), second-degree AV block (MC6.2) and ventricular preexcitation pattern (Wolff-Parkinson-White) (MC 6.4); Other major arrhythmias (MC 8.2). Pathologic Q-waves was defined as major Q-wave (MC 1.1 or 1.2). ECGs with one or more major abnormalities were manually overread, as previously described<sup>15</sup>. ECG interval- and segment lengths were measured from the global median complex. The QT-interval was defined as start of Q-wave to end of T-wave and corrected QT-interval (QTc) was calculated using Bazett's formula ( $QT/\sqrt{RR}$ ). We defined prolonged QTc



**Figure 1.** Study overview. The Copenhagen Comorbidity in HIV infection study included 1099 persons living with HIV of which 909 had an electrocardiogram (ECG) measured at baseline. Participants were invited for a repeat exam after two years and 812 of those with a recorded ECG at baseline had a follow-up ECG recorded. Participants with major ECG abnormalities at baseline or participants with viral load  $\geq 50$  copies/mL were excluded. In total, 667 participants were included in the study.

as  $QTc > 460$  ms in females and  $QTc > 450$  ms in males. New prolonged  $QTc$  was defined as prolonged  $QTc$  at follow up among those who had normal  $QTc$  interval at baseline. In a sensitivity analysis, we used Framingham's formula for QT interval correction,  $QTc_{Framingham} = QT + 0.154(1 - RR)$ . Participants with a QRS duration of 120 ms or more or with ventricular rates  $> 100$  bpm, were not included in the analyses of QT interval prolongation. All ECG analyses were performed blinded to participants' characteristics.

**Statistics.** Continuous variables are presented as means with standard deviations (SD) and categorical variables are presented as numbers and percentages. We used multivariable Poisson regression to investigate if potential risk factors were associated with de novo ECG abnormalities. We adjusted for a model including age, sex, smoking status, hypertension, BMI, and diabetes, which were selected a priori. In two separate sensitivity analyses, we further adjusted for LDL (continuous) and methadone, respectively. We furthermore tested if the most commonly used antiretrovirals were associated with de novo prolonged  $QTc$  interval. When we explored associations between efavirenz or rilpivirine and  $QTc$ , we included only participants who used the respective drugs at both baseline and follow-up. Results were presented as crude and adjusted relative risk (RR) with confidence intervals. We interpreted a p-value of 0.05 or less to infer statistical significance. All statistical analyses were conducted using R<sup>17</sup> with the sandwich and ggplot2 packages<sup>18–20</sup>.

## Results

Of the 1099 participants in COCOMO, 909 (83%) had an ECG recorded at baseline. After a median follow-up of 2.3 years (interquartile range, IQR: 2.1 to 2.4), 812 of these (89%) had a repeat ECG recorded. After excluding participants with viral replication and/or one or more major ECG abnormalities at baseline, 667 participants were eligible for inclusion in the present study (Fig. 1). Mean age at baseline was 51 years (standard deviation, SD: 11) and 570 (85%) were male. Further demographic and clinical characteristics are listed in Table 1.

**De novo major ECG abnormalities.** De novo major ECG abnormalities were present in 34 (5%) participants of whom 6 (18%) had a cardiac event between baseline and follow-up documented in their medical records. Table 2 shows the distribution of ECG abnormalities. In unadjusted analyses, risk of getting any de novo major ECG abnormality at follow-up was associated with higher age (relative risk (RR): 1.59 [95% confidence interval: 1.13, 2.23], per decade older), diabetes (RR: 4.14 [1.6, 10.71]), being underweight (RR: 5.09 [1.61, 16.10]) and baseline protease inhibitor use [RR: 2.22 [1.15, 4.25]].

In multivariable analyses adjusting for age, sex, smoking status, hypertension, BMI, and diabetes, age (RR: 1.57 [1.08, 2.28] per decade older), current smoking (RR: 2.34 [1.06, 5.16]), diabetes (RR: 3.89 [1.72, 8.80]) being underweight (RR: 5.79 [1.70, 19.71]) and baseline protease inhibitor use (RR: 2.45 [1.27, 4.74]) were associated with higher risk of getting any de novo major ECG abnormality at follow-up. Darunavir and atazanavir, the two most commonly used protease inhibitors, were associated with a RR of any de novo major ECG abnormality

	N = 667
Age at baseline (SD)	50.5 (10.7)
Male, n (%)	570 (85)
Smoking, n (%)	
Never smoker	237 (36)
Current smoker	173 (26)
Former smoker	244 (37)
Hypertension, n (%)	284 (43)
Diabetes, n (%)	21 (3.1)
CD4 nadir < 200 cells/ $\mu$ L, n (%)	271 (41)
History of AIDS, n (%)	110 (16)
Protease inhibitor at baseline, n (%)	191 (29)
Protease inhibitor at follow-up, n (%)	175 (26)
Darunavir at baseline, n (%)	111 (17)
Darunavir at follow-up, n (%)	101 (15)
Atazanavir at baseline, n (%)	74 (11)
Atazanavir at follow-up, n (%)	69 (10)
Rilpivirine at baseline, n (%)	24 (3.6)
Rilpivirine at follow-up, n (%)	30 (4.5)
Efavirenz at baseline, n (%)	210 (31)
Efavirenz at follow-up, n (%)	178 (27)
Methadone uses, n (%)	12 (1.8)

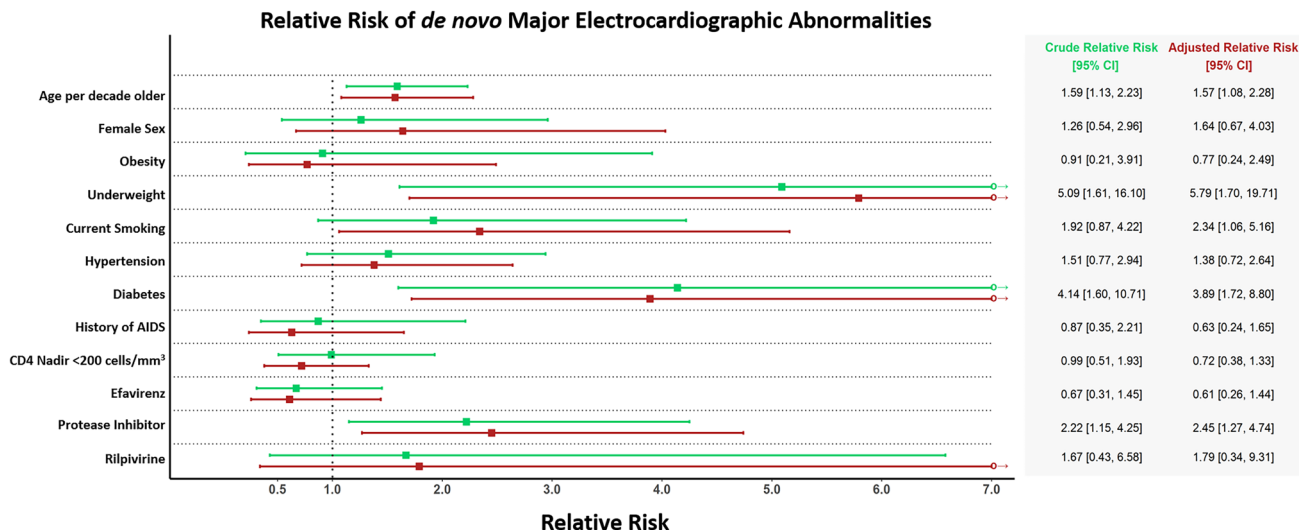
**Table 1.** Participant characteristics.

Major abnormalities <sup>‡</sup> (any), n (%)	34 (5.1)
Major Q wave, n (%)	16 (2.4)
Minor Q wave <i>plus</i> ST-T abnormality, n (%)	2 (0.3)
Major isolated ST-T abnormality, n (%)	14 (2.1)
Any intraventricular block, n (%)	9 (1.3)
RBBB with left anterior hemiblock, n(%)	0 (0)
Brugada pattern, n (%)	0
Left ventricular hypertrophy <i>plus</i> ST-T abnormality, n (%)	2 (0.3)
Atrial fibrillation/flutter, n (%)	3 (0.4)
Wolf–Parkinson–White, n (%)	1 (0.1)
Prolonged QTc*	11 (1.3)
QTc* > 480 ms	2 (0.3)
QTc* > 500 ms	0 (0.0)

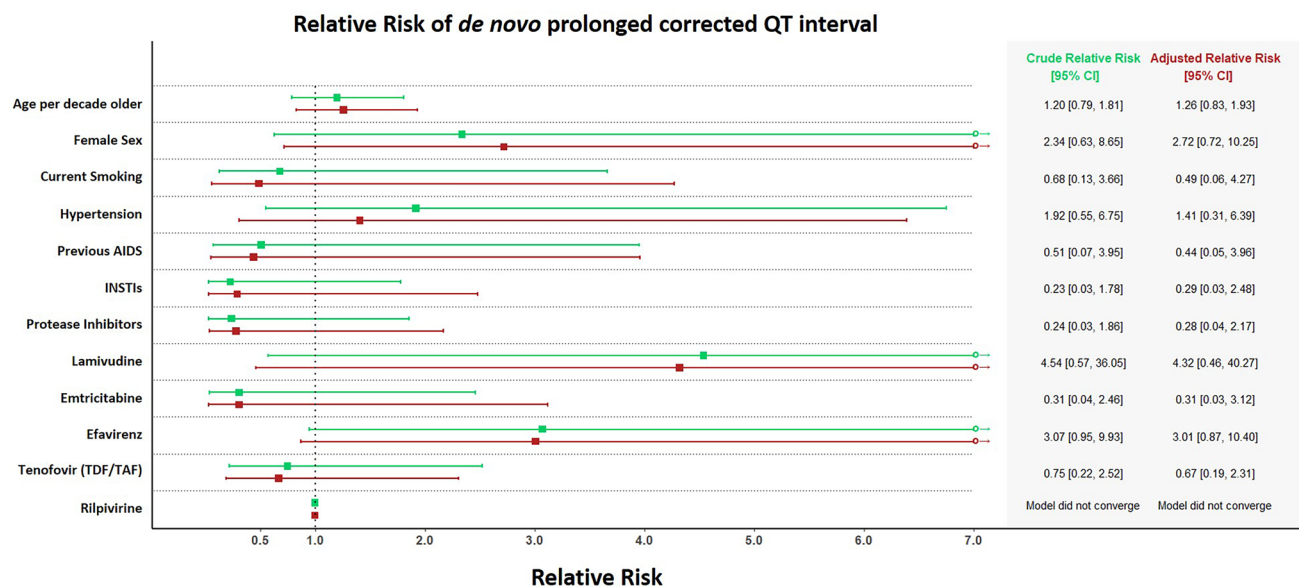
**Table 2.** De novo major abnormalities at follow-up. RBBB right bundle branch block. <sup>‡</sup>Any participant may have more than one major abnormality. \*Corrected using Bazett's formula ( $QT/\sqrt{RR}$ ).

of 1.67 [0.83, 3.34],  $p=0.151$  and 2.34 [0.98, 5.60],  $p=0.056$ , respectively ( $p$  for difference = 0.486). There was little evidence for associations between other variables and de novo major ECG abnormalities (Fig. 2). No specific antiretroviral drug class was associated with de novo major ECG abnormalities and CD4 count was not associated with de novo major ECG abnormalities (supplemental Fig. 1). In a sensitivity analysis, we examined whether further adjustment for serum LDL concentration would attenuate the association between protease inhibitor use and de novo major ECG abnormality at follow-up. After adjusting for LDL, protease inhibitor use remained associated with RR: 2.41 [1.24, 4.67] of de novo major ECG abnormality, and LDL concentration, too, was associated with de novo major ECG abnormality (RR: 1.36 [1.01, 1.82] per mM). In sensitivity analyses, we excluded participants who changed to or from protease inhibitors ( $N=38$ ) from the analyses. In the resulting population subset ( $N=629$ ), protease inhibitor use was associated with an RR of de novo major ECG abnormalities of 2.41 [1.24, 4.69].

**QTc interval.** At baseline, 24 participants had prolonged QTc. Between baseline and follow-up, 11 participants with normal QTc interval at baseline developed de novo prolonged QTc interval according to Bazett's correction and 9 developed de novo prolonged QTc interval according to Framingham's correction. Regardless of correction method, we did not find any variables to predict de novo prolonged QTc or QTc interval  $\geq 480$  ms in



**Figure 2.** Relative Risk of de novo Major Electrocardiographic Abnormalities. Relative risk (RR) of de novo major electrocardiographic abnormalities for different predictors with 95% confidence intervals. Vertical dotted line represents an RR of 1. Green is crude (unadjusted) and red is adjusted for age, sex, smoking status, hypertension, BMI, and diabetes. Age age at baseline, obesity body mass index (BMI)  $\geq 30$  kg/m<sup>2</sup>, underweight BMI < 18.5 kg/m<sup>2</sup>.



**Figure 3.** Relative Risk of de novo prolonged corrected QTc. Relative risk (RR) of de novo prolonged corrected QTc for the most commonly used antiretrovirals with 95% confidence intervals. Vertical dotted line represents an RR of 1. Green is crude (unadjusted) and red is adjusted for age, sex, smoking status, hypertension, body mass index (BMI), and diabetes. Age age at baseline, INSTI integrase nuclear strand transfer inhibitor, TDF Tenofovir disoproxil; TAF Tenofovir alafenamide.

univariable or in multivariable analyses (Fig. 3). The crude and adjusted RR for prolonged QTc for efavirenz use were 3.07 [0.95, 9.93],  $p = 0.061$ , and 3.01 [0.87, 10.40],  $p = 0.082$ , respectively. Methadone use, heavy drinking, marijuana use and monthly use of recreational drugs other than alcohol and marijuana, were not associated with de novo prolonged QTc interval.

### Discussion

In a large cohort of well-treated PLWH, we found five percent of participants to have acquired de novo major ECG abnormalities after a median follow-up of just over two years. Importantly, use of protease inhibitor was associated with more than twice the risk of developing major ECG abnormalities. Few participants developed de novo prolonged QTc, and we did not find any risk factors associated with de novo prolonged QTc although efavirenz use was borderline associated with a higher risk of de novo prolonged QTc.

Little is known about development of de novo major ECG abnormalities in PLWH. Assuming cumulative risk increases linearly over time, our results are comparable with results from the large, community based, *Atherosclerosis Risk in Communities (ARIC)* Study where 8% of similarly aged participants developed de novo Q-waves and/or ST-T abnormalities over a period of three years<sup>21</sup>. However, risk of de novo major ECG abnormalities in our study was four times higher than in a study of patients with type 1 diabetes over the age of 40<sup>22</sup>. As CVD hazard increases with age, comparing populations with different age distributions should be done with caution. In a review of the medical records, we found that just around one in five of participants with de novo major ECG abnormalities had had a cardiac event recorded in their medical records in the follow-up period. This may imply that many cardiac abnormalities are subclinical and remain unnoticed by both patient and treating physician.

Studies consistently report higher risk of myocardial infarction in PLWH than in uninfected populations<sup>1,2,23</sup>, and de novo Q-waves and/or ST-T abnormalities, both signs of ischaemic injury and predictors of major adverse cardiovascular events<sup>21,24,25</sup>, were, indeed, the most common de novo major ECG abnormalities in our cohort. Protease inhibitors have been reported to affect lipid metabolism<sup>26–30</sup>, and protease inhibitor use has been linked to increased risk of CVD in several cohort studies<sup>6–8,31,32</sup>. The more than twofold higher risk of getting de novo major ECG abnormalities among those who used protease inhibitors is similar to the risk of myocardial infarction associated with protease inhibitors<sup>8</sup>. We did not find any individual protease inhibitor to convey a higher risk than others and no individual protease inhibitor was significantly associated with higher risk of de novo major ECG abnormality although the association with atazanavir was borderline significant. Our results indicate that even contemporary protease inhibitors convey cardiovascular risk, and LDL-dyslipidemia did not seem to mediate the increased risk of de novo major ECG abnormalities associated with protease inhibitor use, as the association was not affected by adjusting for LDL. Similar findings have been presented in the Data Collection on Adverse events of Anti-HIV Drugs (D:A:D) study where adjusting for serum lipid levels attenuated but did not remove the association between protease inhibitor use and CVD<sup>6,31</sup>. Traditional risk factors for CVD, such as age, smoking, and diabetes, were all predictors of de novo major ECG abnormalities which supports the guideline recommendations for vigilant risk factor management<sup>33</sup>.

Obesity is a well-established risk factor for cardiovascular disease<sup>34</sup>. Surprisingly, we found low BMI to be associated with higher risk of de novo major ECG abnormalities. Overall mortality is increased among those who are underweight<sup>35</sup>, and other studies have described a U-shaped relationship between BMI and cardiovascular risk<sup>36</sup>. Extremes in BMI, such as anorexia nervosa, may influence the ECG through electrolyte derangements<sup>37</sup>, however, low bodyweight may also act as a surrogate for poor overall health or preclinical cardiovascular disease, and the observed association could be due to unmeasured confounding.

Prolongation of the heart rate corrected QT interval is an often-used marker of delayed repolarization. We examined efavirenz, as this drug previously has been associated with QTc interval prolongation and is considered a drug with possible risk of torsade de pointes<sup>9,10,38</sup>. As almost a third of our participants used efavirenz as part of their antiretroviral regimen, an association would be clinically relevant. Our data did give some evidence to suggest an association between efavirenz use and prolonged QTc in well-treated PLWH, both before and after adjustment, but the association did not reach statistical significance according to our prespecified cut-off. Moreover, the parameter estimation for efavirenz was in the same order of magnitude as that of lamivudine. Studies with larger populations samples are needed to explore this further.

Some limitations to our study warrant mentioning. As we wanted to explore de novo major ECG abnormalities, we included only participants with both baseline and follow-up ECGs in our analyses. Thus, selection bias is possible, as choosing to participate in a study might be influenced by general health. Our study was observational, and some clinically relevant ECG abnormalities such as QTc > 500 ms may have been discovered and intervened against by treating physicians whereby they would not appear on our recordings<sup>39</sup>. However, prevalence of QTc > 500 ms is thought to be rare<sup>40</sup>. Moreover, participants who died before their follow-up did not contribute, and we did also not consider other competing risks. In addition, we chose to use variables collected at baseline to predict future changes in ECG outcomes. As some variables, including protease inhibitor use, might change over time, the exact effect size associated with these variables may vary. However, results were consistent in sensitivity analyses where participants who changed from or to protease inhibitors, were excluded. Strengths of our study include the study size and the detailed, standardized data collection including automatic ECG readings—limiting measurement errors due to reader variability—of both men and women with HIV.

## Conclusion

In conclusion, five percent of well-treated PLWH with no major ECG abnormalities acquired de novo major ECG abnormalities after a two-year period and protease inhibitor use was associated with twice the risk of getting major ECG abnormalities. De novo prolonged QTc was rare and did not seem to constitute a problem in PLWH.

Received: 14 March 2021; Accepted: 23 September 2021

Published online: 21 October 2021

## References

1. Tseng, Z. H. *et al.* Sudden cardiac death in patients with human immunodeficiency virus infection. *J. Am. Coll. Cardiol.* **59**(21), 1891–6. <https://doi.org/10.1016/j.jacc.2012.02.024> (2012).
2. Shah, A. S. V., Stelzle, D., Ken Lee, K., Beck, E. J., Alam, S., Clifford, S., *et al.* *Global Burden of Atherosclerotic Cardiovascular Disease in People Living with HIV Systematic Review and Meta-analysis. Vol. 138, Circulation* 1100–1112 (Lippincott Williams and Wilkins, 2018).
3. Auer, R. *et al.* Association of major and minor ECG abnormalities with coronary heart disease events. *J. Am. Med. Assoc.* **60**, 66 (2012).

4. Iribarren, C., Round, A. D., Lu, M., Okin, P. M. & McNulty, E. J. Cohort study of ECG left ventricular hypertrophy trajectories: Ethnic disparities, associations with cardiovascular outcomes, and clinical utility. *J. Am. Heart Assoc.* **6**, 66 (2017).
5. Knudsen, A. D. *et al.* Prevalence and risk factors of prolonged QT interval and electrocardiographic abnormalities in persons living with HIV. *AIDS* **33**(14), 1 (2019).
6. Friis-Moller, N. *et al.* Class of antiretroviral drugs and the risk of myocardial infarction. *N. Engl. J. Med.* **6**, 66 (2007).
7. Holmberg, S. D. *et al.* Protease inhibitors and cardiovascular outcomes in patients with HIV-1. *Lancet* **6**, 66 (2002).
8. D'Ascenzo, F. *et al.* Acute coronary syndromes in human immunodeficiency virus patients: A meta-analysis investigating adverse event rates and the role of antiretroviral therapy. *Eur. Heart J.* **6**, 66 (2012).
9. Chinello, P. *et al.* Role of antiretroviral treatment in prolonging QTc interval in HIV-positive patients. *J. Infect.* **54**(6), 597–602 (2007).
10. Abdelhady, A. M. *et al.* Efavirenz inhibits the human Ether-A-Go-Go Related current (hERG) and induces QT interval prolongation in CYP2B6\*6\*6 allele carriers. *J. Cardiovasc. Electrophysiol.* **27**(10), 1206–1213 (2016).
11. Arizona Center for Education and Research on Therapeutics. *Combined List of Drugs that Prolong QT AND/OR Cause Torsades DE Pointes (TDP)*. [cited 2019 Jun 6]. <https://crediblemeds.org/>
12. Ronit, A. *et al.* Copenhagen comorbidity in HIV infection (COCOMO) study: a study protocol for a longitudinal, non-interventional assessment of non-AIDS comorbidity in HIV infection in Denmark. *BMC Infect. Dis.* **16**(1), 713. <https://doi.org/10.1186/s12879-016-2026-9> (2016).
13. Unger, T. *et al.* International society of hypertension global hypertension practice guidelines. *Hypertension* **6**, 66 (2020).
14. Williams, B. *et al.* ESC/ESH guidelines for the management of arterial hypertension. *Eur. Heart J.* **6**, 66 (2018).
15. National Institute on Alcohol Abuse and Alcoholism. *Helping Patients Who Drink Too Much: A Clinician's Guide*. Fam Pract News. 2005.
16. Prineas R, Crow R, Blackburn H, Prineas R, Crow R, Cow R, et al. The Minnesota Code Manual of Electrocardiographic Findings: Standards and Procedures for ECG Measurement in Epidemiologic and Clinical Trials. Springer. 2009.
17. R: A language and environment for statistical computing. R Core Team (2019). R Foundation for Statistical Computing, Vienna, Austria. 2019. <http://www.r-project.org>
18. Wickham, H. *ggplot2: Elegant Graphics for Data Analysis* (Springer, 2016). <https://ggplot2.tidyverse.org>
19. Zeileis, A. Econometric computing with HC and HAC covariance matrix estimators. *J. Stat. Softw.* **6**, 66 (2004).
20. Zeileis, A. Object-oriented computation of sandwich estimators. *J. Stat. Softw.* **6**, 66 (2006).
21. Zhang, Z. M., Prineas, R. J., Soliman, E. Z., Baggett, C. & Heiss, G. Prognostic significance of serial Q/ST-T changes by the Minnesota Code and Novacode in the Atherosclerosis Risk in Communities (ARIC) study. *Eur. J. Prev. Cardiol.* **6**, 66 (2012).
22. Soliman, E. Z. *et al.* Progression of electrocardiographic abnormalities in type 1 diabetes during 16 years of follow-up: The Epidemiology of Diabetes Interventions and Complications (EDIC) study. *J. Am. Heart Assoc.* **6**, 66 (2015).
23. Rasmussen, L. D. *et al.* Myocardial infarction among danish HIV-infected individuals: Population-attributable fractions associated with smoking. *Clin. Infect. Dis.* **6**, 66 (2015).
24. Krittayaphong, R. *et al.* Electrocardiographic predictors of cardiovascular events in patients at high cardiovascular risk: A multi-center study. *J. Geriatr. Cardiol.* **6**, 66 (2019).
25. Soliman, E. Z. E. Z. *et al.* Prevalence and prognostic significance of ECG abnormalities in HIV-infected patients: Results from the strategies for management of antiretroviral therapy study. *J. Electrocardiol.* **44**(6), 779–85 (2011).
26. Périard, D. *et al.* Atherogenic dyslipidemia in HIV-infected individuals treated with protease inhibitors. *Circulation* **6**, 66 (1999).
27. Tsiodras, S., Mantzoros, C., Hammer, S. & Samore, M. Effects of protease inhibitors on hyperglycemia, hyperlipidemia, and lipodystrophy: A 5-year cohort study. *Arch. Intern. Med.* **6**, 66 (2000).
28. Leyes, P. *et al.* Increased cholesterol absorption rather than synthesis is involved in boosted protease inhibitor-associated hypercholesterolaemia. *AIDS* **6**, 66 (2018).
29. Gatell, J. M. *et al.* Switching from a ritonavir-boosted protease inhibitor to a dolutegravir-based regimen for maintenance of HIV viral suppression in patients with high cardiovascular risk. *AIDS* **6**, 66 (2017).
30. Knudsen, A. D., Krebs-Demmer, L., Børge, N., Elming M, Gelpi M, Sigvardsen P, et al. *Pericardial Adipose Tissue Volume is Independently Associated with HIV status*. Submitt JACC CI.
31. Worm, S. W. *et al.* Risk of myocardial infarction in patients with HIV infection exposed to specific individual antiretroviral drugs from the 3 major drug classes: The data collection on adverse events of anti-HIV drugs (D:A:D) study. *J. Infect. Dis.* **201**(3), 318–30. <https://doi.org/10.1086/649897> (2010).
32. Alvi, R. M. *et al.* Protease inhibitors and cardiovascular outcomes in patients with HIV and heart failure. *J. Am. Coll. Cardiol.* **6**, 66 (2018).
33. European AIDS Clinical Society E. *European AIDS Clinical Society Guidelines*. Version 10.0. November 2019. IEEE Trans Sonics Ultrason (2019).
34. Bogers, R. *et al.* Association of overweight with increased risk of coronary heart disease partly independent of blood pressure and cholesterol levels. *Arch Intern Med.* **6**, 66 (2007).
35. Flegal, K. M., Graubard, B. I., Williamson, D. F. & Gail, M. H. Excess deaths associated with underweight, overweight, and obesity. *J. Am. Med. Assoc.* **6**, 66 (2005).
36. Park, D., Lee, J. H. & Han, S. Underweight: Another risk factor for cardiovascular disease?. *Medicine* **6**, 66 (2017).
37. Giovino, S. *et al.* Anorexia nervosa and heart disease: a systematic review. *Eat. Weight Disord.* **6**, 66 (2019).
38. Woosley, R., Heise, C., Romero, K. [www.crediblemeds.org](http://www.crediblemeds.org), QTdrugs List, AZCERT; Inc. 1822 Innovation Park Dr.; Oro Valley; AZ 85755 [Internet]. QTdrugs List. 2020 [cited 2020 Sep 16]. [www.Crediblemeds.org](http://www.Crediblemeds.org)
39. Al-Khatib, S. M. *et al.* 2017 AHA/ACC/HRS guideline for management of patients with ventricular arrhythmias and the prevention of sudden cardiac death. *Circulation* **6**, 66 (2018).
40. Lazzarini, P. E. *et al.* Risk of qtc interval prolongation associated with circulating anti-ro/ssa antibodies among us veterans: An observational cohort study. *J. Am. Heart Assoc.* **6**, 66 (2021).

## Acknowledgements

We extend our gratitude to the patients for their willingness to participate. We are also grateful to all medical and laboratory staff for their invaluable help.

## Author contributions

A.D.K., M.T.T. and J.H. collected the data. A.D.K, K.F.K, T.B, J.G, L.K and S.D.N designed the research study. A.D.K, J.B.N and C.G analysed the data. A.D.K and S.D.N wrote the first draft of the paper. All authors edited the following drafts and all authors have read and approved the final manuscript.



## Funding

This work was supported by The Danish Heart Foundation. The COCOMO two-year follow-up was supported by an unrestricted research grant from Gilead.

## Competing interests

A.D.K has received a grant from The Danish Heart Foundation and a travelling grant from Gilead unrelated to this manuscript; LK has received personal fees from AstraZeneca and Novartis as speaker at symposia, unrelated to this manuscript; S.D.N. has received unrestricted research grants from Novo Nordisk Foundation, Lundbeck Foundation, Augustinus Foundation, Rigshospitalet Research Council. Advisory board activity for Gilead and GSK/ViiV. All unrelated to this manuscript. All other authors report no competing of interest.

## Additional information

**Supplementary Information** The online version contains supplementary material available at <https://doi.org/10.1038/s41598-021-00290-x>.

**Correspondence** and requests for materials should be addressed to S.D.N.

**Reprints and permissions information** is available at [www.nature.com/reprints](http://www.nature.com/reprints).

**Publisher's note** Springer Nature remains neutral with regard to jurisdictional claims in published maps and institutional affiliations.



**Open Access** This article is licensed under a Creative Commons Attribution 4.0 International License, which permits use, sharing, adaptation, distribution and reproduction in any medium or format, as long as you give appropriate credit to the original author(s) and the source, provide a link to the Creative Commons licence, and indicate if changes were made. The images or other third party material in this article are included in the article's Creative Commons licence, unless indicated otherwise in a credit line to the material. If material is not included in the article's Creative Commons licence and your intended use is not permitted by statutory regulation or exceeds the permitted use, you will need to obtain permission directly from the copyright holder. To view a copy of this licence, visit <http://creativecommons.org/licenses/by/4.0/>.

© The Author(s) 2021