



**HAL**  
open science

# Why Ablation of Sites With Purkinje Activation Is Antiarrhythmic: The Interplay Between Fast Activation and Arrhythmogenesis

Ruben Coronel, Mark Potse, Michel Haïssaguerre, Nicolas Derval, Mathilde Rivaud, Veronique Meijborg, Matthijs Cluitmans, Méléze Hocini, Bastiaan Boukens

## ► To cite this version:

Ruben Coronel, Mark Potse, Michel Haïssaguerre, Nicolas Derval, Mathilde Rivaud, et al.. Why Ablation of Sites With Purkinje Activation Is Antiarrhythmic: The Interplay Between Fast Activation and Arrhythmogenesis. *Frontiers in Physiology*, 2021, 12, pp.648396. 10.3389/fphys.2021.648396 . hal-03452281

**HAL Id: hal-03452281**

**<https://hal.inria.fr/hal-03452281>**

Submitted on 26 Nov 2021

**HAL** is a multi-disciplinary open access archive for the deposit and dissemination of scientific research documents, whether they are published or not. The documents may come from teaching and research institutions in France or abroad, or from public or private research centers.

L'archive ouverte pluridisciplinaire **HAL**, est destinée au dépôt et à la diffusion de documents scientifiques de niveau recherche, publiés ou non, émanant des établissements d'enseignement et de recherche français ou étrangers, des laboratoires publics ou privés.



# Why Ablation of Sites With Purkinje Activation Is Antiarrhythmic: The Interplay Between Fast Activation and Arrhythmogenesis

Ruben Coronel<sup>1,2</sup>, Mark Potse<sup>2,3,4</sup>, Michel Haïssaguerre<sup>2</sup>, Nicolas Derval<sup>2</sup>, Mathilde R. Rivaud<sup>1</sup>, Veronique M. F. Meijborg<sup>1</sup>, Matthijs Cluitmans<sup>1</sup>, Mélèze Hocini<sup>2</sup> and Bastiaan J. Boukens<sup>5\*</sup>

<sup>1</sup>Department of Experimental Cardiology, Amsterdam Cardiovascular Sciences, Amsterdam UMC, University of Amsterdam, Amsterdam, Netherlands, <sup>2</sup>IHU Liryc, Electrophysiology and Heart Modeling Institute, Fondation Bordeaux Université, Bordeaux, France, <sup>3</sup>UMR5251 Institut de mathématiques de Bordeaux, Talence, France, <sup>4</sup>Carmen Team, Inria Bordeaux - Sud-Ouest, Talence, France, <sup>5</sup>Department of Medical Biology, Amsterdam Cardiovascular Sciences, Amsterdam UMC, University of Amsterdam, Amsterdam, Netherlands

## OPEN ACCESS

### Edited by:

Zhilin Qu,  
University of California,  
Los Angeles, United States

### Reviewed by:

Zhen Song,  
Peng Cheng Laboratory, China  
Konstantinos Letsas,  
Evangelismos General Hospital, Greece

### \*Correspondence:

Bastiaan J. Boukens  
b.j.boukens@amsterdamumc.nl

### Specialty section:

This article was submitted to  
Cardiac Electrophysiology,  
a section of the journal  
Frontiers in Physiology

**Received:** 31 December 2020

**Accepted:** 03 March 2021

**Published:** 23 March 2021

### Citation:

Coronel R, Potse M, Haïssaguerre M, Derval N, Rivaud MR, Meijborg VMF, Cluitmans M, Hocini M and Boukens BJ (2021) Why Ablation of Sites With Purkinje Activation Is Antiarrhythmic: The Interplay Between Fast Activation and Arrhythmogenesis. *Front. Physiol.* 12:648396. doi: 10.3389/fphys.2021.648396

Ablation of sites showing Purkinje activity is antiarrhythmic in some patients with idiopathic ventricular fibrillation (iVF). The mechanism for the therapeutic success of ablation is not fully understood. We propose that deeper penetrance of the Purkinje network allows faster activation of the ventricles and is proarrhythmic in the presence of steep repolarization gradients. Reduction of Purkinje penetrance, or its indirect reducing effect on apparent propagation velocity may be a therapeutic target in patients with iVF.

**Keywords:** idiopathic ventricular fibrillation, arrhythmias, early repolarization syndrome, Purkinje, ablation, electrophysiology

## INTRODUCTION

Patients who have survived idiopathic ventricular fibrillation (iVF) are typically difficult to treat and often rely on an implanted Cardioverter Defibrillator (ICD) to restore normal heart rhythm (Patton et al., 2016). Single ventricular premature beats that trigger iVF may originate in Purkinje cells (Gianni et al., 2018). Accordingly, removing the trigger by ablation of regions showing Purkinje activity reduces recurrence of ventricular fibrillation in the majority of patients (Haïssaguerre et al., 2002; Bänsch et al., 2003; Bogun et al., 2006). The treatment, however, is intriguing because “pruning” of sites with Purkinje spikes around the target area adds to the success (Cheniti et al., 2018; Haïssaguerre et al., 2020). Therefore, we provide an alternative hypothesis stating that ablation of Purkinje fibers prevents arrhythmia recurrence by reducing the amount of Purkinje tissue and not, or not only, by removing the trigger.

## Variability Exists in the Extent of the Purkinje System

The cardiac Purkinje network is highly variable between species and within species, especially in the extent of the peripheral branches (Truex and Smythe, 1965; Demoulin and Kulbertus, 1972; Ono et al., 2009; Sedmera and Gourdie, 2014; Anderson et al., 2017). The ventricular conduction system develops from the embryonic trabeculae (Christoffels and Moorman, 2009; Jensen et al., 2012). During development, part of the trabeculae will become Purkinje cells whereas the remainder acquires a working myocardial phenotype. The primordial Purkinje

trabeculae require further specialization after birth under influence of *Nkx2-5* and *Irx3* expression and Notch signaling (Miquerol et al., 2004; Meysen et al., 2007; Zhang et al., 2011). Individual variability in expression of these factors influences penetration of the Purkinje network into the ventricular wall. This is illustrated in mice with over-activation of Notch signaling, where the Purkinje cells can be found deeper in the ventricular wall (Rentschler et al., 2012). The observation that the precursors of the cardiac conduction system are present along the entire human embryonic endocardium (Christoffels and Moorman, 2009) whereas it is merely present in a loose network in the adult heart suggests that the extensive form of a Purkinje system is disadvantageous. We speculate that natural selection has limited the Purkinje system to an optimal size, allowing synchronized myocardial contraction without the risk of reentrant arrhythmias. Rapid activation is thus matched with the physiological repolarization gradients. Arrhythmias may develop if the repolarization gradients become steeper in the course of life or as a result of pathological processes. Natural selection is no longer operative in that stage of life.

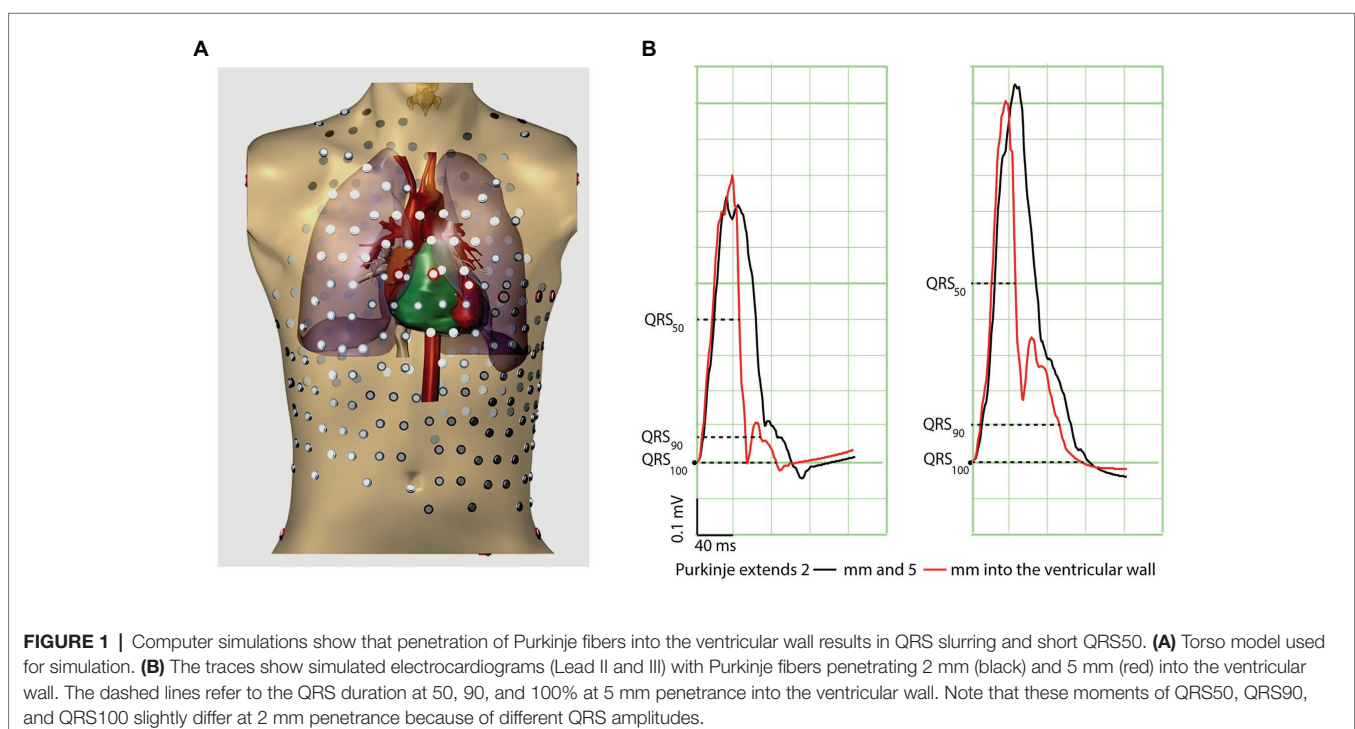
### Deeper Penetration of Purkinje Fibers Shortens QRS<sub>50</sub> But Not QRS<sub>100</sub>

Because the Purkinje system transfers activation to the working myocardium, and because the latter has slower conduction properties than Purkinje tissue, the ventricular activation process can be conceived as consisting of two components, one (in Purkinje-rich tissue) predominantly through Purkinje-muscle conduction, and the other (in Purkinje-void tissue) predominantly through muscle-muscle conduction. Thus, the end of the QRS complex is generated by muscle-muscle conduction only.

In the presence of a more penetrating Purkinje network, a relatively larger contribution of (fast) Purkinje-mediated conduction is expected at the beginning of the QRS complex, whereas the end of the QRS complex is relatively unaffected. We therefore reasoned that a Purkinje system that extends slightly more into the walls of the ventricles leads to a shorter QRS “body” (QRS<sub>50</sub>, QRS duration at 50% of the QRS amplitude). We tested this in a computer model of a human heart and torso (**Figure 1A**).

Propagating action potentials were simulated with a whole-heart reaction-diffusion model at 200  $\mu\text{m}$  resolution (Hoogendijk et al., 2011; Potse, 2018). Membrane ionic currents were computed with a human ventricular membrane model that included the differential characteristics of subendocardial, midmyocardial, and subepicardial myocytes (ten Tusscher et al., 2004). Transmural fiber rotation was represented in the model. The ECG was computed using a bidomain model of the human heart and torso, including lungs and intracavitary blood volumes (Potse, 2018). The model incorporated a Purkinje network that penetrated into the ventricular walls. The degree of penetration was varied from 2 mm (from the endocardium into the wall) to 5 mm. Purkinje cells were modeled by incorporating a larger surface to volume ratio (leading to a 2 $\times$  larger conduction velocity than normal). Simulations were performed on a Bullx cluster computer.

The black traces in **Figure 1B** represent the control condition where the Purkinje-system extended 2 mm into the left ventricular wall. When the Purkinje network extended 5 mm into the left ventricular wall, the QRS complex became shorter especially at mid-amplitude and was followed by J-waves similar to those in patients with the Early Repolarization pattern. The end of the QRS complex was less affected (**Supplementary Table S1**).



Thus, our simulations indicate that a deeper penetrating Purkinje network is associated with a short QRS<sub>50</sub> and a J-wave (ER pattern) as an expression of relatively late activated tissue. This generates the question whether humans with a short QRS<sub>50</sub> are more at risk for idiopathic ventricular re-entrant arrhythmias (Wolpert et al., 2008).

## HOW DEEPER PENETRATED PURKINJE FIBERS FACILITATE UNIDIRECTIONAL BLOCK

Fast ventricular activation is a typical characteristic of the Purkinje system, especially if it penetrates deeper into the ventricular wall or if it is more extensive. This is schematically demonstrated in **Figure 2A**. The blue line in **Figure 2A** shows a local repolarization gradient (induced by a sinus beat) over a distance of myocardium (horizontal axis). Its steepness (s/m) conforms to recent repolarization mapping studies in normal human hearts (Opthof et al., 2017). The figure also shows the activation time (vertical axis) of a premature beat propagating along a Purkinje fiber (black line) from a point located at the far left. Its slope represents the reciprocal of conduction velocity (s/m, a steeper slope indicates a slower conduction). Conduction velocity in the Purkinje network is high (in this example 2 m/s) compared to that of working myocardium (here 0.5 m/s; Hoffman et al., 1959). At the sites indicated by the arrows, the activation wave transfers from Purkinje conduction to conduction along the working myocardium (orange lines) at the Purkinje-muscle junction (PMJ). The “apparent” conduction velocity AD is faster than the conduction velocity along myocardium AC. Thus, the risk of conduction block is increased if the PMJ is closer to the foot of the repolarization gradient causing the apparent conduction velocity to be faster than the reciprocal of the slope of the repolarization gradient. **Figure 2B** shows the concept in a cross section of the heart with a normal distribution of Purkinje fibers (Haissaguerre et al., 2016) and with a more extensive distribution of Purkinje fibers. The blue areas mark regions with a prolonged repolarization. The figure suggests that rapid conduction along a Purkinje fiber facilitates unidirectional block and reentry, and that ablation of the Purkinje fibers proximal to the repolarization gradient is antiarrhythmic.

## DISCUSSION

Here, we propose that rapid activation of the heart due to an extensive Purkinje system in the presence of steep repolarization gradients promotes unidirectional block and subsequent reentry. Our hypothesis appears to be contradicting the insight that conduction slowing is arrhythmogenic. However, our hypothesis defines the first occurrence of (unidirectional) block and not the maintenance of the arrhythmia.

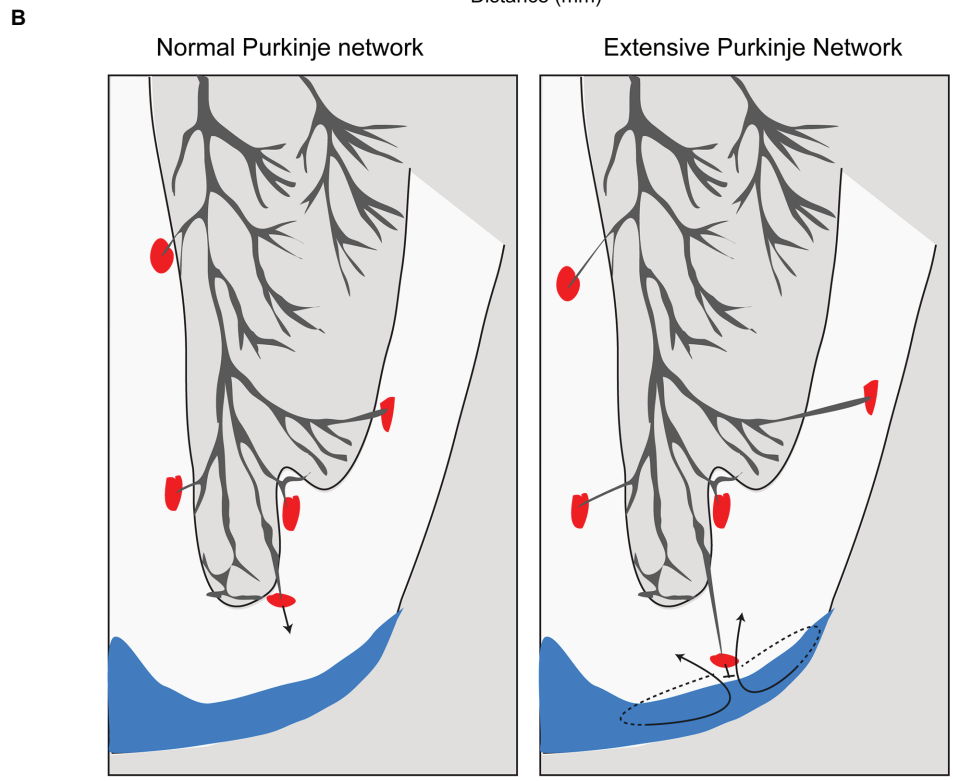
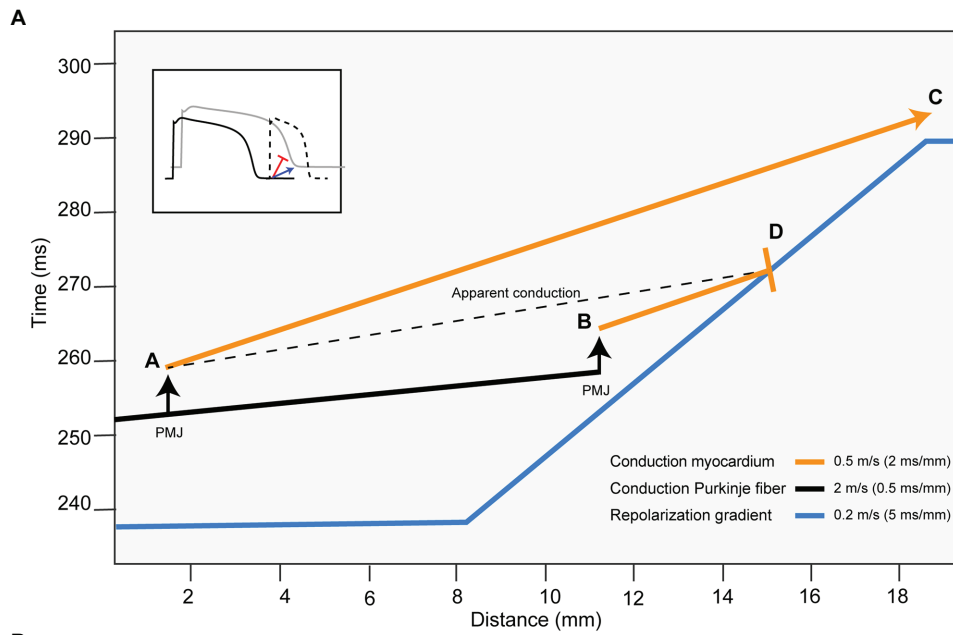
We have demonstrated earlier that conduction may modulate the arrhythmogenic substrate formed by a repolarization heterogeneity and may either promote or suppress the induction of reentry by a premature beat depending on the site of application

of sodium channel blockade relative to a repolarization gradient (Coronel et al., 2010). Conduction slowing in the myocardial region with the shorter repolarization is antiarrhythmic (Coronel et al., 2010). We here reasoned that the opposite is also valid and that local conduction speeding in that region is pro-arrhythmic. In general, conduction is safe when it is slower than the reciprocal of the maximum repolarization gradient. Conversely, if repolarization gradients develop that are steeper than the reciprocal of the apparent conduction velocity (for example, in the course of life, or resulting from diseases like the long QT syndrome), reentrant arrhythmias are more likely to follow a premature activation. From **Figure 2A**, it can be derived that when the apparent conduction is faster, a larger range of coupling intervals (and a larger area from which premature beats originate) exists at which a premature beat causes re-entry (a larger vulnerable window).

Earlier studies have shown that fast activation of the heart, and shortening of the QRS duration, relates to the extensiveness of the Purkinje system (Goldberger et al., 1985; Berger et al., 1993; Allison et al., 2007). Our computer simulation, however, indicates that when deeper penetration of the Purkinje system into the ventricular wall only activates part of the myocardium earlier, it may leave some areas being activated relatively late, which can give rise to notching and slurring at the end of the QRS complex (**Figure 1B**; Meijborg et al., 2016). This is in line with our recent view on the mechanisms underlying the early repolarization pattern (Boukens et al., 2019, 2020; Haissaguerre et al., 2019). The computer model was not tested for arrhythmogenesis.

Whether the Purkinje system indeed penetrates deeper into the ventricular wall of patients with iVF is yet to be investigated. Evidence of the involvement of the Purkinje system with iVF was provided by Koizumi et al. (2016) who discovered two novel mutations in the gene encoding IRX3, a transcription factor involved in the development and electrophysiological characteristics of the Purkinje system, in family members of patients with iVF. They also investigated mice deficient for *Irx3* and found higher incidence of premature beats and sustained ventricular arrhythmias than in control mice. Their observations indicate that these arrhythmias result from altered expression of ion channels within the Purkinje system facilitating the spontaneous generation of action potentials. Whether the Purkinje network extended into the ventricular walls of these mice was not studied.

Indirect evidence of the involvement of the Purkinje system in iVF comes from the observation that Purkinje spikes often precede premature beats that give rise to ventricular fibrillation in iVF patients. Ablation of sites showing Purkinje spikes is often antiarrhythmic (Haissaguerre et al., 2002). It is thought that by ablation of sites with Purkinje spikes the PMJ, and thereby the source of the arrhythmias, is destroyed. However, local potentials showing Purkinje spikes do often also show ventricular complexes with a prominent R wave which, maybe more importantly, occur up to 100 ms after the Purkinje spike. This indicates that the ventricular myocardium activates elsewhere after which the activation front propagates toward the recording electrode giving rise to the R wave. Ablating regions showing these Purkinje spikes will reduce the extent of Purkinje network and reduces the apparent conduction velocity (the ratio of the



**FIGURE 2 |** Purkinje-muscle junctions (PMJs) close to repolarization gradients may cause reentrant arrhythmias. **(A)** The graph shows time (vertical axis) and myocardial distances (horizontal axis). The blue line represents the repolarization time along the myocardial axis of beat 1 (supposedly a sinus activation). The orange and black lines show activation time along the myocardial axis of beat 2 (a ventricular premature activation). The orange line represents conduction through working myocardium and the black line through Purkinje fibers. If the PMJ activates the working myocardium far from the repolarization gradient (location A) the activation front propagates at low speed toward repolarization gradient, which will have disappeared when the activation front arrives (location C). If the PMJ activates the working myocardium close to the repolarization front (location B), the activation front meets still depolarized myocardium and conduction will block (location D) setting the stage for re-entry. Inset: A slowly conducting premature activation front (blue) arrives late at the site of prolonged repolarization causing activation whereas a fast conducting activation front (red) results in unidirectional block and re-entry. PMJ, Purkinje-muscle junction. **(B)** In the normal human heart, the Purkinje system is located at the endocardial side of the ventricular myocardium (left panel). If the Purkinje system penetrates into the transmural wall of the ventricle, the change is higher the working myocardium is activated close to depolarized myocardium (blue) and conduction block occurs.

conduction time and distance between A and C in **Figure 2**) and is thereby antiarrhythmic.

It cannot be excluded that ablation of sites showing Purkinje spikes reduces the fine network of the Purkinje fibers, which, in turn, reduces the anatomical substrate for reentry. The Purkinje network as substrate for reentry was already recognized by Schmitt and Erlanger (1928) who have provided a model for the mechanism of Purkinje-muscle reentry that has served as a concept for the understanding of anatomical re-entry in general. It is based on a Purkinje fiber that branches into two fibers both connecting working myocardium. The triangular organization facilitates reentrant activation. This concept has been applied to the mechanism of bundle branch re-entry, atrioventricular nodal reentry tachycardia and atrioventricular reentry tachycardia. Waxman et al. (1980) have described a similar mechanism but within a Purkinje fiber. Purkinje fibers potentially also play a role in the genesis of unidirectional block. Heterogeneity in the moment of recovery from inexcitability (or of full repolarization) is an important factor for the genesis of arrhythmias as it can lead to unidirectional block following a premature beat (Rivaud et al., 2021). Purkinje fibers typically have a longer action potential than the surrounding working myocardium (Zaza et al., 1989). Purkinje fibers are electrically isolated from the surrounding myocardium except at the PMJs. Therefore, differences in action potential duration are maintained even in peripheral branches of the Purkinje system where the action potential may even be longer than in the bundle branches (Myerburg et al., 1970). These areas with long local action potential duration are referred to as gates (Myerburg et al., 1970) and can cause conduction block leading to reentry when an ectopic beat originates nearby (Myerburg, 1971). These gates have been found by Walton et al. (2014) as well using optical mapping.

## CONCLUSION

Although the above ideas are speculative and not substantiated by systematic studies, our findings suggest that cardiac conduction

velocity has a safe upper limit in the presence of pre-existing repolarization heterogeneities. Moreover, the reduction of apparent propagation velocity by ablating parts of the Purkinje system may underlie the antiarrhythmic efficacy of this therapeutic approach. These contentions need to be tested clinically.

## DATA AVAILABILITY STATEMENT

The raw data supporting the conclusions of this article will be made available by the authors, without undue reservation.

## AUTHOR CONTRIBUTIONS

RC and BB designed and wrote the manuscript. MP performed computer simulation and edited the manuscript. MHa, ND, MR, VM, MC, and MHo edited the manuscript. All authors contributed to the article and approved the submitted version.

## FUNDING

This work was supported by Leducq transatlantic network of excellence (RHYTHM, 16CVD02; RC, MHa). BB received support from the Dutch heart foundation (2016T047). This work was granted access to HPC resources of CINES under GENCI allocation 2019-A0030307379. This work was supported by the National Research Agency; grant reference ANR-10-IAHU04-LIRYC.

## SUPPLEMENTARY MATERIAL

The Supplementary Material for this article can be found online at: <https://www.frontiersin.org/articles/10.3389/fphys.2021.648396/full#supplementary-material>

## REFERENCES

- Allison, J. S., Qin, H., Dossdall, D. J., Huang, J., Newton, J. C., Allred, J. D., et al. (2007). The transmural activation sequence in porcine and canine left ventricle is markedly different during long-duration ventricular fibrillation. *J. Cardiovasc. Electrophysiol.* 18, 1306–1312. doi: 10.1111/j.1540-8167.2007.00963.x
- Anderson, R. H., Jensen, B., Mohun, T. J., Petersen, S. E., Aung, N., Zemrak, E., et al. (2017). Key questions relating to left ventricular noncompaction cardiomyopathy: is the emperor still wearing any clothes? *Can. J. Cardiol.* 33, 747–757. doi: 10.1016/j.cjca.2017.01.017
- Bänsch, D., Oyang, F., Antz, M., Arentz, T., Weber, R., Val-Mejias, J. E., et al. (2003). Successful catheter ablation of electrical storm after myocardial infarction. *Circulation* 108, 3011–3016. doi: 10.1161/01.CIR.000103701.30662.5C
- Berger, R. D., Rosenbaum, D. S., and Cohen, R. J. (1993). Is the power spectrum of the QRS complex related to a fractal his-Purkinje system? *Am. J. Cardiol.* 71, 430–433. doi: 10.1016/0002-9149(93)90446-J
- Bogun, F., Good, E., Reich, S., Elmouchi, D., Igic, P., Tschopp, D., et al. (2006). Role of Purkinje fibers in post-infarction ventricular tachycardia. *J. Am. Coll. Cardiol.* 48, 2500–2507. doi: 10.1016/j.jacc.2006.07.062
- Boukens, B. J. D., Benjacholamas, V., van Amersfoort, S., Meijborg, V. M., Schumacher, C., Jensen, B., et al. (2020). Structurally abnormal myocardium underlies ventricular fibrillation storms in a patient diagnosed with the early repolarization pattern. *JACC Clin. Electrophysiol.* 6, 1395–1404. doi: 10.1016/j.jacep.2020.06.027
- Boukens, B. J., Opthof, T., and Coronel, R. (2019). J-waves in Epicardial Electrograms can guide ablation of arrhythmogenic substrates. *Circ. Res.* 124, 205–207. doi: 10.1161/CIRCRESAHA.118.314414
- Cheniti, G., Vlachos, K., Meo, M., Puyo, S., Thompson, N., Denis, A., et al. (2018). Mapping and ablation of idiopathic ventricular fibrillation. *Front. Cardiovasc. Med.* 5:123. doi: 10.3389/fcvm.2018.00123
- Christoffels, V. M., and Moorman, A. F. (2009). Development of the cardiac conduction system: why are some regions of the heart more arrhythmogenic than others? *Circ. Arrhythm. Electrophysiol.* 2, 195–207. doi: 10.1161/CIRCEP.108.829341
- Coronel, R., Wilms-Schopman, E. J. G., and Janse, M. J. (2010). Anti- or profibrillatory effects of Na(+) channel blockade depend on the site of application relative to gradients in repolarization. *Front. Physiol.* 1:10. doi: 10.3389/fphys.2010.00010
- Demoulin, J. C., and Kulbertus, H. E. (1972). Histopathological examination of concept of left hemiblock. *Heart* 34, 807–814. doi: 10.1136/hrt.34.8.807

- Gianni, C., Burkhardt, J. D., Trivedi, C., Mohanty, S., and Natale, A. (2018). The role of the Purkinje network in premature ventricular complex-triggered ventricular fibrillation. *J. Interv. Card. Electrophysiol.* 52, 375–383. doi: 10.1007/s10840-018-0402-7
- Goldberger, A. L., Bhargava, V., West, B. J., and Mandell, A. J. (1985). On a mechanism of cardiac electrical stability. The fractal hypothesis. *Biophys. J.* 48, 525–528. doi: 10.1016/S0006-3495(85)83808-X
- Haïssaguerre, M., Duchateau, J., Dubois, R., Hocini, M., Cheniti, G., Sacher, F., et al. (2020). Idiopathic ventricular fibrillation: role of Purkinje system and microstructural myocardial abnormalities. *JACC Clin. Electrophysiol.* 6, 591–608. doi: 10.1016/j.jacep.2020.03.010
- Haïssaguerre, M., Nademane, K., Hocini, M., Cheniti, G., Duchateau, J., Frontera, A., et al. (2019). Depolarization versus repolarization abnormality underlying inferolateral J-wave syndromes: new concepts in sudden cardiac death with apparently normal hearts. *Heart Rhythm* 16, 781–790. doi: 10.1016/j.hrthm.2018.10.040
- Haïssaguerre, M., Shoda, M., Jais, P., Nogami, A., Shah, D. C., Kautzner, J., et al. (2002). Mapping and ablation of idiopathic ventricular fibrillation. *Circulation* 106, 962–967. doi: 10.1161/01.CIR.0000027564.55739.B1
- Haïssaguerre, M., Vigmond, E., Stuyvers, B., Hocini, M., and Bernus, O. (2016). Ventricular arrhythmias and the his-Purkinje system. *Nat. Rev. Cardiol.* 13, 155–166. doi: 10.1038/nrcardio.2015.193
- Hoffman, B. F., Cranefield, P. F., Stuckey, J. H., Amer, N. S., Cappelletti, R., and Domingo, R. T. (1959). Direct measurement of conduction velocity in situ specialized conducting system of mammalian heart. *Proc. Soc. Exp. Biol. Med.* 102, 55–57. doi: 10.3181/00379727-102-25141
- Hoogendijk, M. G., Potse, M., and Vinet, A., de Bakker, J. M., and Coronel, R. (2011). ST segment elevation by current-to-load mismatch: an experimental and computational study. *Heart Rhythm* 8, 111–118, doi: 10.1016/j.hrthm.2010.09.066
- Jensen, B., Boukens, B. J. D. J., Postma, A. V. V., Gunst, Q. D. D., van den Hoff, M. J. B. J., Moorman, A. F. M. F., et al. (2012). Identifying the evolutionary building blocks of the cardiac conduction system. *PLoS One* 7:e44231. doi: 10.1371/journal.pone.0044231
- Koizumi, A., Sasano, T., Kimura, W., Miyamoto, Y., Aiba, T., Ishikawa, T., et al. (2016). Genetic defects in a his-Purkinje system transcription factor, IRX3, cause lethal cardiac arrhythmias. *Eur. Heart J.* 37, 1469–1475. doi: 10.1093/eurheartj/ehv449
- Meijborg, V. M. E., Potse, M., Conrath, C. E., and Belterman, C. N. W., De Bakker, J. M. T., and Coronel, R. (2016). Reduced sodium current in the lateral ventricular wall induces inferolateral J-waves. *Front. Physiol.* 7:365. doi: 10.3389/fphys.2016.00365
- Meysen, S., Marger, L., Hewett, K. W., Jarry-Guichard, T., Agarkova, I., Chauvin, J. P., et al. (2007). Nkx2.5 cell-autonomous gene function is required for the postnatal formation of the peripheral ventricular conduction system. *Dev. Biol.* 303, 740–753. doi: 10.1016/j.ydbio.2006.12.044
- Miquerol, L., Meysen, S., Mangoni, M., Bois, P., van Rijen, H. V., Abran, P., et al. (2004). Architectural and functional asymmetry of the his-Purkinje system of the murine heart. *Cardiovasc. Res.* 63, 77–86. doi: 10.1016/j.cardiores.2004.03.007
- Myerburg, R. J. (1971). The gating mechanism in the distal atrioventricular conducting system. *Circulation* 43, 955–960. doi: 10.1161/01.CIR.43.6.955
- Myerburg, R. J., Stewart, J. W., and Hoffman, B. F. (1970). Electrophysiological properties of the canine peripheral A-V conducting system. *Circ. Res.* 26, 361–378. doi: 10.1161/01.res.26.3.361
- Ono, N., Yamaguchi, T., Ishikawa, H., Arakawa, M., Takahashi, N., Saikawa, T., et al. (2009). Morphological varieties of the Purkinje fiber network in mammalian hearts, as revealed by light and electron microscopy. *Arch. Histol. Cytol.* 72, 139–149. doi: 10.1679/aohc.72.139
- Ophof, T., Remme, C. A., Jorge, E., Noriega, F., Wiegner, R. F., Tiasim, A., et al. (2017). Cardiac activation–repolarization patterns and ion channel expression mapping in intact isolated normal human hearts. *Heart Rhythm* 14, 265–272. doi: 10.1016/j.hrthm.2016.10.010
- Patton, K. K., Ellinor, P. T., Ezekowitz, M., Kowey, P., Lubitz, S. A., Perez, M., et al. (2016). Electrocardiographic early repolarization: a scientific statement from the American Heart Association. *Circulation* 133, 1520–1529. doi: 10.1161/CIR.0000000000000388
- Potse, M. (2018). Scalable and accurate ECG simulation for reaction-diffusion models of the human heart. *Front. Physiol.* 9:370. doi: 10.3389/fphys.2018.00370
- Rentschler, S., Yen, A. H., Lu, J., Petrenko, N. B., Lu, M. M., Manderfield, L. J., et al. (2012). Myocardial notch signaling reprograms cardiomyocytes to a conduction-like phenotype. *Circulation* 126, 1058–1066. doi: 10.1161/CIRCULATIONAHA.112.103390
- Rivaud, M. R., Bayer, J. D., Cluitmans, M., van der Waal, J., Bear, L. R., Boukens, B. J., et al. (2021). Critical repolarization gradients determine the induction of reentry-based torsades de pointes arrhythmia in models of long QT syndrome. *Heart Rhythm* 18, 278–287. doi: 10.1016/j.hrthm.2020.09.020
- Schmitt, F. O., and Erlanger, J. (1928). Directional differences in the conduction of the impulse through heart muscle and their possible relation to extrasystolic and fibrillary contractions. *Am. J. Physiol. Content* 87, 326–347. doi: 10.1152/ajplegacy.1928.87.2.326
- Sedmera, D., and Gourdie, R. G. (2014). Why do we have Purkinje fibers deep in our heart? *Physiol. Res.* 63(Suppl. 1), S9–S18. doi: 10.33549/physiolres.932686
- ten Tusscher, K. H. W. J., Noble, D., Noble, P. J., and Panfilov, A. V. (2004). A model for human ventricular tissue. *Am. J. Physiol. Heart Circ. Physiol.* 286, H1573–H1589. doi: 10.1152/ajpheart.00794.2003
- Truex, R. C., and Smythe, M. Q. (1965). Comparative morphology of the cardiac conduction tissue in animals. *Ann. N. Y. Acad. Sci.* 127, 19–33. doi: 10.1111/j.1749-6632.1965.tb49390.x
- Walton, R. D., Martinez, M. E., Bishop, M. J., Hocini, M., Haïssaguerre, M., Plank, G., et al. (2014). Influence of the Purkinje-muscle junction on transmural repolarization heterogeneity. *Cardiovasc. Res.* 103, 629–640. doi: 10.1093/cvr/cvu165
- Waxman, M. B., Downar, E., and Wald, R. W. (1980). Unidirectional block in Purkinje fibers. *Can. J. Physiol. Pharmacol.* 58, 925–933. doi: 10.1139/y80-141
- Wolpert, C., Veltmann, C., Schimpf, R., Antzelevitch, C., Gussak, I., and Borggrefe, M. (2008). Is a narrow and tall QRS complex an ECG marker for sudden death? *Heart Rhythm* 5, 1339–1345. doi: 10.1016/j.hrthm.2008.05.019
- Zaza, A., Malfatto, G., and Rosen, M. R. (1989). Electrophysiologic effects of ketanserin on canine Purkinje fibers, ventricular myocardium and the intact heart. *J. Pharmacol. Exp. Ther.* 250, 397–405.
- Zhang, S. S., Kim, K. H., Rosen, A., Smyth, J. W., Sakuma, R., Delgado-Olguin, P., et al. (2011). Iroquois homeobox gene 3 establishes fast conduction in the cardiac his-Purkinje network. *Proc. Natl. Acad. Sci. U. S. A.* 108, 13576–13581. doi: 10.1073/pnas.1106911108

**Conflict of Interest:** MC is part-time employed by Philips Research.

The remaining authors declare that the research was conducted in the absence of any commercial or financial relationships that could be construed as a potential conflict of interest.

Copyright © 2021 Coronel, Potse, Haïssaguerre, Derval, Rivaud, Meijborg, Cluitmans, Hocini and Boukens. This is an open-access article distributed under the terms of the Creative Commons Attribution License (CC BY). The use, distribution or reproduction in other forums is permitted, provided the original author(s) and the copyright owner(s) are credited and that the original publication in this journal is cited, in accordance with accepted academic practice. No use, distribution or reproduction is permitted which does not comply with these terms.