

# Caribbean-Wide, Long-Term Study of Seagrass Beds Reveals Local Variations, Shifts in Community Structure and Occasional Collapse

Brigitta I. van Tussenbroek<sup>1\*</sup>, Jorge Cortés<sup>2</sup>, Rachel Collin<sup>3</sup>, Ana C. Fonseca<sup>2</sup>, Peter M. H. Gayle<sup>4</sup>, Hector M. Guzmán<sup>3</sup>, Gabriel E. Jácome<sup>3</sup>, Rahanna Juman<sup>5</sup>, Karen H. Koltes<sup>6</sup>, Hazel A. Oxenford<sup>7</sup>, Alberto Rodríguez-Ramírez<sup>8<sup>aa</sup></sup>, Jimena Samper-Villarreal<sup>2</sup>, Struan R. Smith<sup>9<sup>ab</sup></sup>, John J. Tschirky<sup>10</sup>, Ernesto Weil<sup>11</sup>

**1** Instituto de Ciencias del Mar y Limnología, Universidad Nacional Autónoma de México, Cancún, Mexico, **2** Centro de Investigación en Ciencias del Mar y Limnología (CIMAR), Universidad de Costa Rica, San Pedro, Costa Rica, **3** Smithsonian Tropical Research Institute, Panama, Republic of Panama, **4** Discovery Bay Marine Laboratory, Discovery Bay, Jamaica, **5** Institute of Marine Affairs, Trinidad, Trinidad and Tobago, **6** Office of Insular Affairs, Department of the Interior, Washington DC, United States of America, **7** CERMES, University of the West Indies, Barbados, West Indies, **8** Instituto de Investigaciones Marinas y Costeras (INVEMAR), Santa Marta, Colombia, **9** Bermuda Biological Station for Research, St. George, Bermuda, **10** Garrett Park, Maryland, United States of America, **11** Department of Marine Sciences, University of Puerto Rico, Mayaguez, Puerto Rico, United States of America

## Abstract

The CARICOMP monitoring network gathered standardized data from 52 seagrass sampling stations at 22 sites (mostly *Thalassia testudinum*-dominated beds in reef systems) across the Wider Caribbean twice a year over the period 1993 to 2007 (and in some cases up to 2012). Wide variations in community total biomass (285 to >2000 g dry m<sup>-2</sup>) and annual foliar productivity of the dominant seagrass *T. testudinum* (<200 and >2000 g dry m<sup>-2</sup>) were found among sites. Solar-cycle related intra-annual variations in *T. testudinum* leaf productivity were detected at latitudes > 16°N. Hurricanes had little to no long-term effects on these well-developed seagrass communities, except for 1 station, where the vegetation was lost by burial below ~1 m sand. At two sites (5 stations), the seagrass beds collapsed due to excessive grazing by turtles or sea-urchins (the latter in combination with human impact and storms). The low-cost methods of this regional-scale monitoring program were sufficient to detect long-term shifts in the communities, and fifteen (43%) out of 35 long-term monitoring stations (at 17 sites) showed trends in seagrass communities consistent with expected changes under environmental deterioration.

**Citation:** van Tussenbroek BI, Cortés J, Collin R, Fonseca AC, Gayle PMH, et al. (2014) Caribbean-Wide, Long-Term Study of Seagrass Beds Reveals Local Variations, Shifts in Community Structure and Occasional Collapse. PLoS ONE 9(3): e90600. doi:10.1371/journal.pone.0090600

**Editor:** Judi Hewitt, University of Waikato (National Institute of Water and Atmospheric Research), New Zealand

**Received:** November 8, 2013; **Accepted:** February 2, 2014; **Published:** March 3, 2014

This is an open-access article, free of all copyright, and may be freely reproduced, distributed, transmitted, modified, built upon, or otherwise used by anyone for any lawful purpose. The work is made available under the Creative Commons CC0 public domain dedication.

**Funding:** CARICOMP received support from the John D. and Catherine T. MacArthur Foundation, UNESCO Environment and Development in Coastal Regions and in Small Islands (CSI), US National Science Foundation-Division of International Programs and Division of Ocean Sciences, CARICOMP data Management Centre, Centre for Marine Sciences, University of West Indies, Jamaica, and the directors and administrators of the participating institutions. The funders had no role in study design, data collection and analysis, decision to publish, or preparation of the manuscript.

**Competing Interests:** The authors have declared that no competing interests exist.

\* E-mail: vantuss@cmarl.unam.mx

<sup>aa</sup> Current address: The University of Queensland, Brisbane, Australia,

<sup>ab</sup> Current address: Bermuda Aquarium Museum and Zoo, Bermuda,

## Introduction

Seagrass beds are among the most extensive shallow marine coastal habitats worldwide [1]. Their ecosystem services include sustaining diverse faunal communities [1], supporting fisheries [2], providing coastal protection through stabilization of sediments [3], cycling of nutrients [4] and carbon sequestration [5,6]. In the Caribbean, seagrasses are associated with marine/brackish protected bays and estuaries or reef systems (reef lagoons between the coastlines and the coral reefs). In reef systems, seagrass communities fulfil the above-mentioned services, and additionally provide important ecological linkages with the adjacent coral reefs and/or mangroves. Seagrass communities support the existence of coral reefs through the export of organic materials [7] and provide grazing grounds and/or nurseries for coral reef fishes and other

reef fauna [8–10]. In addition, associated calcareous macro-algae and epiphytes (algae and invertebrates) on seagrass leaves are major providers of calcium carbonate sediments [11–13].

In places where funding resources are particularly limited such as developing countries in the Caribbean, bio-indicators can provide warning of changes in the biological condition of a coastal system and are thereby valuable to natural resource managers [14]. Despite such relevance, comprehensive spatio-temporal analyses of bio-indicators in tropical countries are scarce because of the lack of long-term monitoring data. Seagrasses are widely distributed, rooted in the substrate and respond to changes in the environment in terms of morphology and population characteristics; thus they can serve as biological indicators (or bio-indicators) for assessing changes in the status of coastal systems [15]. Retreat of seagrass beds to shallower areas, with a consequent reduction in

coverage or biomass has been used as an indicator of decreasing water clarity [16,17]. Seagrasses respond to nutrient enrichment physiologically by increasing N or P content [18,19], changing morphology such as leaf width [20,21] and changing biomass distribution between above- and below-ground plant parts [22,23]. Changes in water quality (clarity, salinity or nutrients) result in changes in species composition [22–24] and density of the foliar shoots of the seagrasses [25].

This study presents the results of a long-term (1993–2007, with some continuing to the present) Caribbean-wide seagrass monitoring initiative: the Caribbean Coastal Marine Productivity (CARICOMP) program. The program was established in 1992 to study land-sea interaction processes and to monitor changes through time in the productivity and structure of the three principal tropical coastal ecosystems: mangroves, seagrasses and coral reefs, with the ultimate goal of providing scientific information for management of coastal resources [26]. The CARICOMP program has generated a Caribbean-wide dataset using a simple, low-cost but standardized sampling protocol, consistent among sites over time. While the Caribbean region corresponds to the “Tropical Atlantic” seagrass bioregion [27] which has relatively high species diversity (10 species, [28]), most CARICOMP seagrass study areas were shallow reef lagoons dominated by two species (*Thalassia testudinum* and *Syringodium filiforme*, [29]). The present work aims to document changes within seagrass communities at unprecedented spatial and temporal (more than a decade) scales. We demonstrate that the low-cost standardized CARICOMP sampling protocol (consistent among sites and over time) can provide, in addition to the responses of seagrass communities to season and climate, evidence of deterioration of the environment along Caribbean coastlines.

## Materials and Methods

### Ethics Statement

Sample permits were issued by Florida Keys National Marine Sanctuary for USA-Florida Keys (site 2), SAGARPA for Mexico-Puerto Morelos (site 5, since 2003), Ministerio del Ambiente de Costa Rica for Costa Rica (site 21, since 2000); specific permissions were not required for any other site or date, and the field studies did not involve endangered or protected species.

The sampling protocols and organization of the monitoring network are described in CARICOMP [26,29]. Seagrass monitoring was conducted at 22 sites with 52 sampling stations (Fig 1) from 1993 until 2012, although many concluded the monitoring program before 2007 (Table S1). At each site, generally two *Thalassia testudinum*-dominated stations were selected by the participants; one station representing the most developed *T. testudinum* bed (“high productivity”) and the second an average or typical bed. However, some sites had only one station, whereas others had up to six stations (Table S1). Bi-annual sampling intervals were specified in the protocol, but participation in the program was voluntary, and sampling frequencies and periods varied among sites (Table S1).

Growth and productivity of the seagrass *T. testudinum* were determined in 4–6 haphazardly placed quadrats (10×20 cm) per station. The leaves were marked just above the colorless basal sheath (or at the level of the quadrats) by punching one or two holes with a syringe needle and left to grow for 7–14 days. After this time, the foliar shoots were counted and the leaves were cut at the levels of the previous basal marks. Alternatively, the leaves were marked again at the base, and the entire foliar shoots (including sheaths) were retrieved from the sediments, and the foliar shoots were counted in the laboratory. In the laboratory, leaf

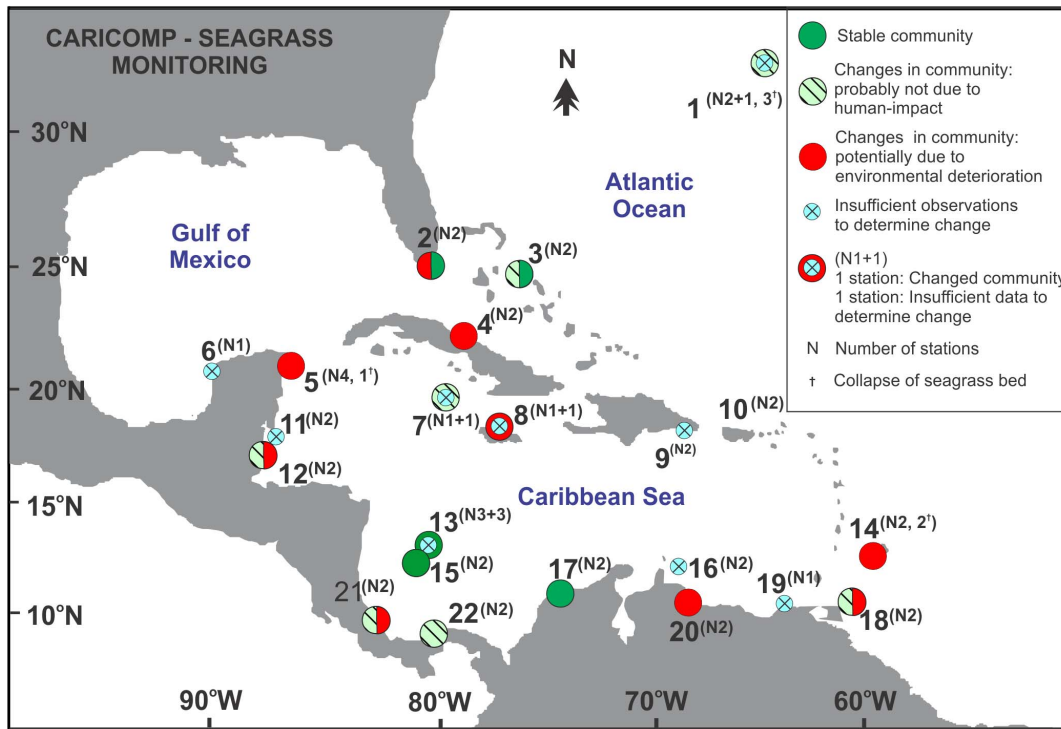
tissues were separated into new growth (newly emerged leaves and leaf sections below the mark of old leaves) and old fractions. The epiphytes were removed by rinsing the blades in a 10% acid solution and/or scraping with a razorblade. The leaf fractions were dried and dry weight was determined. The dry weights of new growth fractions represented the production ( $\text{g m}^{-2} \text{d}^{-1}$ ) and the combined weight of both fractions corresponded with leaf biomass ( $\text{g m}^{-2}$ ). Based on expected changes in growth due to the solar cycle, sampling was planned twice a year: once in the high-growth season (March through August) and once during the low-growth season (September through February). Annual productivity rates were determined by averaging the daily productivity rates ( $\text{per m}^{-2}$ ) of all samples collected during the low- and high growth seasons for each year and multiplying by 365.

Biomass of the seagrass community was determined by taking two to four core samples at each station with a PVC or steel corer 15–20 cm in diameter (depending on site). The seagrasses (*T. testudinum* and “other grasses”, mostly *Syringodium filiforme*) were separated into above- and below-ground fractions. Above-ground fractions were also separated and analyzed for the rooted calcareous and fleshy algae (below-ground parts were excluded from the analysis). The fractions were cleaned and dried before the weight was determined. The calcareous algae were decalcified in a 10% acid solution before being dried and weighed to determine their somatic weight. Annual biomass ( $\text{per m}^{-2}$ ) was determined as the means of all samples collected during a year.

Possible spatial patterns for mean daily productivity rates of *T. testudinum* related to latitude or Physical Environments of the Caribbean Sea (PECS) defined by Chollet et al. [30] were explored using a Random Forest analysis [31]. The standard setting for the analysis defined by R v. 2.15.3 (creation of 500 randomly selected decision trees) and overall mean values (Table S2) for the stations were used for this analysis. The same analyses were applied to total (above-and below-ground) biomass of the seagrass community (data in table S3). Posteriorly, the terms latitude, depth and Secchi reading (table S2) were combined (latitude\*depth\*Secchi reading) to discern whether a combination of these terms could explain *T. testudinum* productivity or total community biomass.

Intra-annual variation in productivity of *T. testudinum* was determined for twenty-four stations at eleven sites that had ten or more sampling events. General mean productivity was computed for each of the twenty-four stations as the average of all measurements of productivity at that station. Intra-annual variation ( $\Delta P$ ) was determined by calculating the deviation from the general mean productivity for each sampling event (per station), expressed as the percentage of the general mean productivity.  $\Delta P$  was plotted separately for high- and low- growth season at each station. For each degree of latitude, a One-sample t-test was applied to test whether  $\Delta P$  differed from zero. At Long Key, Florida (Site 2), and Bon Accord Lagoon, Tobago (Site 18), sampling was conducted more than twice a year. Correlations between mean monthly Sea Surface Temperatures, (SST), hours of daylight and growth rates per shoot ( $\text{g dry shoot}^{-1} \text{d}^{-1}$ ) were determined for each station at these two sites.

An interim report of the CARICOMP program identified increased terrestrial run-off (sewage, fertilizers and/or sediments) as the major and most prevalent anthropogenic influence in the monitoring region [29]. Consequences of increased terrestrial run-off into coastal waters are mainly increasing nutrients loads and/or decreasing water clarity. The following indicators of long-term changes in community and seagrass parameters were used as indicators of potential changes in coastal conditions: 1) Total (above-, and below ground) community biomass (seagrasses and



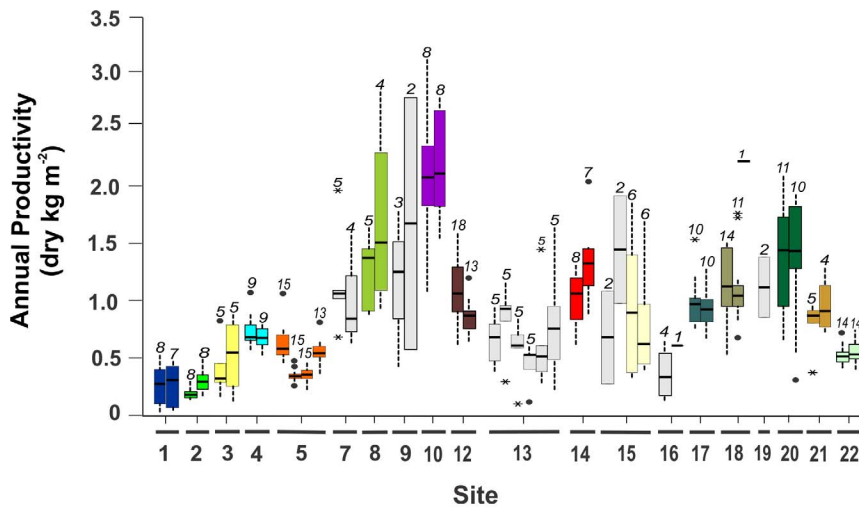
**Figure 1. Map of CARICOMP seagrass sites, ordered according to latitude.** 1. Bermuda, 2. USA-Long Key, 3. Bahamas-San Salvador, 4. Cuba-Cayo Coco, 5. Mexico-Puerto Morelos, 6. Mexico-Celestun, 7. Cayman Islands-Grand Cayman, 8. Jamaica-Discovery Bay, 9. Dominican Republic-Parque Nacional Este, 10. Puerto Rico-La Parguera, 11. Belize-Turneffe Island, 12. Belize-Twin Cays/Carrie Bow Cay, 13. Colombia-Isla Providencia, 14. Barbados-St. Lawrence, 15. Colombia-Isla San Andres, 16. Curaçao-Spaanse Water, 17. Colombia-Chengue Bay, 18. Tobago-Bon Accord Lagoon, 19. Venezuela-Isla de Margarita, 20. Venezuela-Morrocoy, 21. Costa Rica-Cahuita, 22. Panama-Isla de Colon. doi:10.1371/journal.pone.0090600.g001

algae), 2) Relative dominance (above-ground biomass seagrass/above-ground community biomass) of faster-growing seagrasses (classified as “other seagrasses” in the CARICOMP protocol, but mainly consisting of *S. filiforme*), 3) Relative dominance of faster growing fleshy algae, 4) Above-ground biomass relative to total biomass of the seagrasses (the most abundant seagrass *T. testudinum* was used for this assessment), 5) Productivity of *T. testudinum* and 6) Foliar shoot density of *T. testudinum*. Responses to changes in the environment depend on local settings [14], but combinations of consistent trends in two or more of the above-mentioned parameters may indicate environmental degradation. Both decrease in water clarity and increase in nutrients were expected to increase the dominance of faster growing seagrasses (parameter 2) or algae (parameter 3), and/or increase the relative investment in above-ground biomass (parameter 4). Total community biomass (parameter 1) and productivity of *T. testudinum* (parameter 5) are expected to decrease at increasing turbidity and to increase at increasing nutrient input into oligotrophic or mesotrophic systems. Foliar shoot density of *T. testudinum* (parameter 6) is expected to decrease with increasing turbidity. Significant slopes of linear regressions for each of these parameters versus year were considered to indicate a consistent pattern of change over the sampling period. These long-term trends were determined only when sampling covered at least five years (although intermittent at some stations) sampling effort with at least six sampling events, and included 35 stations at 17 sites.

## Results

Annual productivity of leaves of *Thalassia testudinum* varied by an order of magnitude among the stations: lowest productivity was registered at Long Key, Florida Keys, USA (site 2-station 4, < 200 g dry m<sup>-2</sup> y<sup>-1</sup>) whereas highest leaf productivity (> 2000 g dry m<sup>-2</sup> y<sup>-1</sup>) was attained at Puerto Rico (site 10-stations 21 and 22) and Tobago (site 18-station 45, Fig. 2, Table S2). Community above-ground biomass varied over 20-fold among stations (Table S3), from 16 g dry m<sup>-2</sup> at a mono-specific *T. testudinum* bed at Bermuda to 325 g dry m<sup>-2</sup> at a coastal fringe in Puerto Morelos, Mexico, where 59% of biomass was accounted for by the large fleshy algae *Avrainvillea* spp. (Fig. 3, Table S3). The highest total (above-, and below ground) biomass of *T. testudinum* was registered at Twin Cays, Belize (1960 g dry m<sup>-2</sup>, Fig. 3). Inter-annual variations in both productivity and total biomass were considerable at all sampling stations (Figs. 2, 3). Of the 52 stations included in the analysis of biomass, only five (<10%) were monospecific beds of *T. testudinum* (without other seagrasses or macro-algae apart from epiphytes, Fig. 3, Table S3), indicating that the seagrass vegetative communities in the tropical Atlantic reef systems are typically multi-species associations.

No clear classification trees could be constructed relative to latitude for *T. testudinum* leaf productivity and total (above-and below-ground) community (seagrass and macro-algae) biomass. The Random Forests only explained 32.5% (productivity) or 57.9% (biomass) of the variance in the data. When depth and Secchi readings were added as terms, the fits of the models increased for productivity (52.8% of variance explained) and for



**Figure 2. Annual leaf productivity of *Thalassia testudinum* per sampling station.** The stations are grouped per site (underlined, 1–6 stations per site), and stations only sampled during one season are excluded. The boxes and vertical bars represent inter-annual variation. The horizontal lines correspond with the median values, 50% of the cases are within the box limits and the vertical bars indicate the smallest or largest values that are not outliers, • represent values more than 1.5 box-lengths from lower/upper box limit, and \* represent values more than 3 box-lengths from lower/upper box limit. The digits above the bars indicate N (the number of sampling years). Grey bars represent stations that were not included in the long-term analysis.

doi:10.1371/journal.pone.0090600.g002

biomass (59.8% of variance explained). The CARICOMP seagrass sites were in 10 of the 16 physicochemical provinces in the Caribbean defined by Chollett et al. [30], and the models constructed for productivity and PECS did not result in a precise fit either for productivity (34.8% of the variance was explained) or total community biomass (35.1% of the variance).

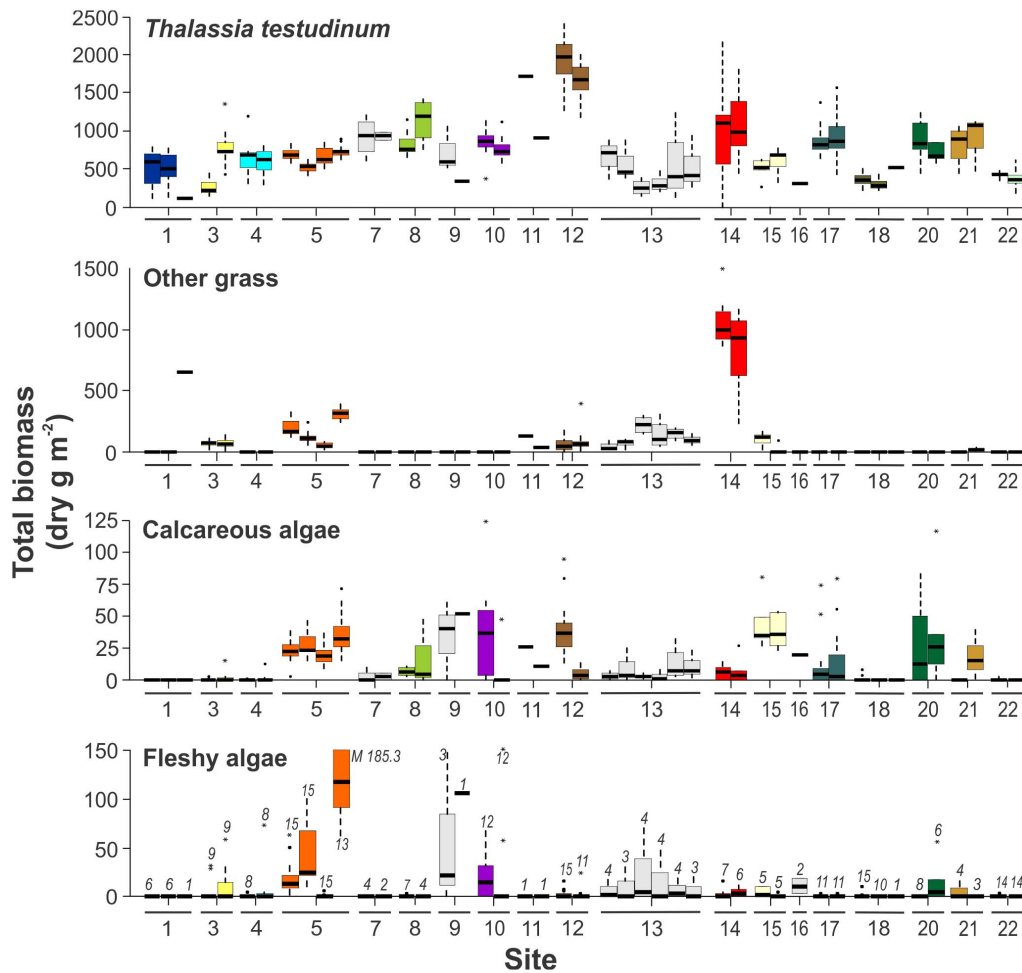
Intra-annual variation in leaf productivity was evident at latitude 16°48' (Belize) and higher (Fig. 4, Table S4). At Long Key, Florida (site 2) correlations among mean monthly shoot growth rates of *T. testudinum*, mean monthly SST and median hours of daylight were significant (Figure S1, Table S5). None of these correlations was significant at the more southern Bon Accord Lagoon in Tobago (site 18).

The seagrass communities at the majority (25) of the 35 stations included in the analysis for longer-term trends in the community showed changes in at least one of the six selected parameters (Table 1, Table S6). At six stations the seagrass beds collapsed: in Bermuda (3 stations) the decline was due to excessive grazing by sea turtles; in Barbados (2 stations) poor water quality followed by a population explosion of sea urchins and subsequent storms were responsible; and in Mexico, a coastal bed (1 station) was buried by sediments during a hurricane. Most monitoring stations (46 out of 52) were exposed at least once to a major meteorological event (hurricane or tropical storm, Table S1) during the study period, but apart from the above-mentioned collapse of communities in Mexico and Barbados (where the storms were not the main cause of collapse), minor impacts of storms were registered only at Belize-station 26 and Venezuela-stations 47 and 48 (Table 1). At 15 (43%) out of 35 studied stations (Table 1, Fig. 5), changes in the seagrass beds were consistent with hypothesized change scenarios of increased turbidity (Site 4-Stations 8 & 9 and Site 21-Station 49) or increased nutrient input (Site 2-Station 5; Site 5-Stations 10 thru 13; Site 8-Station 17; Site 10-Station 21; Site 12-Station 25; Site 14-Stations 33 & 34 Site 20-Stations 47 & 48). Most stations that showed shifts in community structure consistent with environmental degradation were reported to have received little or only moderate human-induced impacts at the onset of the study (Fig. 6).

## Discussion

The CARICOMP monitoring program shows wide variation in seagrass productivity and biomass across the Caribbean, reflecting the different environmental settings among the sampling sites, although most were associated with coral reef systems. This study included a broad spectrum of seagrass community types dominated by *Thalassia testudinum*, from highly productive almost mono-specific beds to multi-species communities with several seagrass species and benthic macro-algae. The physicochemical provinces (PECS) defined by Chollett et al. [30] could not reliably predict the mean leaf productivity of *T. testudinum* or total biomass of the community. The 16 PECS were defined based on sea surface temperature, water clarity (from satellite images), salinity, wind-driven exposure and exposure to hurricanes. The criteria for the classification into these 16 provinces (PECS) likely did not include all relevant parameters that determine seagrass development. For example, Zieman et al. [32] suggested that in the Caribbean higher standing crops may be expected at sites with relief and considerable rainfall that supply nutrients for the development of larger plants, such as Jamaica, Puerto Rico, Belize, Venezuela (Morrocoy) and Panama. Latitude determines water temperatures and light regimes, and it was a better predictor for community biomass (but not productivity of *T. testudinum*) than the PECS. Combining latitude with local depth and mean Secchi reading (indicator for water transparency) resulted in more precise predictions; but less than 60% of the variances in mean leaf productivity of *T. testudinum* or total community biomass were explained by these combined predictors, suggesting that other factors also influence the leaf dynamics of *T. testudinum* and status of the seagrass communities.

Intra-annual changes in the growth of *T. testudinum* were registered at latitude 16°48'N (Site 12-Belize) and higher, and they appeared to be mainly driven by the seasonal solar-cycle. Also, at the northerly Florida Keys site, the initiation of the 'high-growth season' shows a lag of 1–2 months in comparison with more southerly sites (Figure S1), most likely in response to relatively low



**Figure 3. Total (above- and below-ground) biomass of the principal components of the community per sampling station grouped per site.** Other grass: species of seagrass other than *Thalassia testudinum*, mostly *Syringodium filiforme*. Somatic (decalcified) above-ground weight of the calcareous algae is considered. The boxes and bars represent inter-annual variation, and stations with only one sampling event are excluded. The digits above the bars in the bottom graph indicate N (the number of sampling years). M median of fleshy algae at site 5-station 13. See legend of Fig. 2 for further explanation.

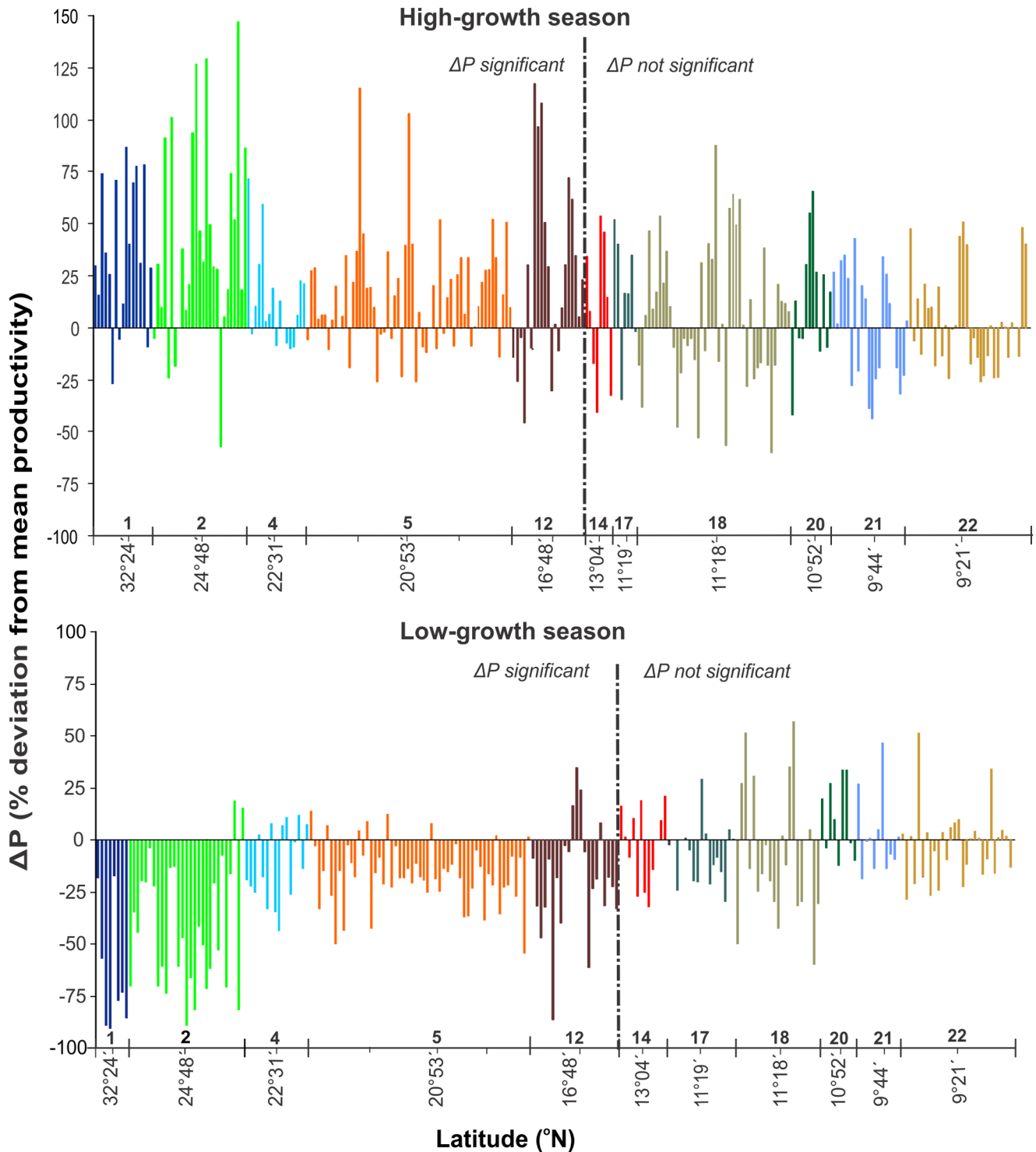
doi:10.1371/journal.pone.0090600.g003

temperatures with corresponding reduced growth rates of *T. testudinum* until May (Table S5).

Most seagrass beds in this study have been exposed to hurricanes or major storms during the monitoring period (Table S1, Figure S2), but they were strikingly resilient. The seagrasses at a few stations were negatively affected (see Table 1), but recovery was rapid (within 1 to several years). Eradication only occurred at one station in a narrow (20–50 m wide) coastal fringe in Puerto Morelos, Mexico, during Hurricane Wilma (2005) by burial below ~1 m of sand [33]. However, recovery of this seagrass bed is now in progress (Van Tussenbroek, unpublished data). The vegetation at most stations consisted of *T. testudinum* dominated beds in sub-tidal reef-systems, where *T. testudinum* is a large and persistent seagrass that invests much of its biomass in below-ground tissue, which aids in firm anchorage of the plants [34] and stabilization of the sediments. Seagrass beds in the tropical or sub-tropical Atlantic that are not associated with reefs are often dominated by less robust seagrass species, such as those in the Gulf of Mexico, may be much more susceptible to damage or destruction by hurricanes or storms [Heck et al., 1996 (in [35]), [36–38], although there are exceptions [35].

Forty-three percent of the seagrass communities at the 35 long-term study stations at nine sites show changes that potentially indicate degradation of the environment between 1993 and 2007 (2012 for some stations, Table 1, Fig. 5). These changes over a relatively short time-span (6–18 years) across many sites is a worrying trend, particularly because most of these sites were only moderately disturbed by humans at the outset of the study (Fig. 6). Only two originally undisturbed sites, Colombia-Isla Providencia (site 13, Stations 29–31), and Colombia-Chengue Bay (site 17, stations 41 and 42) remained in ‘pristine’ condition up to the end of the monitoring period (2007 and 2005 respectively, Table 1). Several sites, such as Bahamas-San Salvador (site 3), Colombia-Isla San Andres (site 15), Tobago-Bon Accord lagoon (site 18), Panama-Isla de Colon (site 22), have been impacted by human development for decades or more than a century [39], but we did not detect indications of further degradation during the study period.

The consequences of these changes in seagrass communities across the Caribbean are difficult to assess at this point because baseline information concerning the structure, processes and drivers of Caribbean seagrass beds is deficient. However, it is likely that the ecosystem services offered by the seagrass communities



**Figure 4. Deviations from general mean leaf productivity ( $\Delta P$ ) of *Thalassia testudinum* per station during High growth season (May–September at site 1 and 2, March–August at all other sites) and Low growth season (October–April at sites 1 and 2, September–February at all other sites). See Table S4 for significance differences of  $\Delta P$ . Only stations with at least 10 sampling events were included. Numbers above the X-axis indicate site number, and the minor ticks indicate the different sampling stations at those sites.**  
doi:10.1371/journal.pone.0090600.g004

will be compromised by changes in their productivity and composition of the seagrass community. For example, a community shift from *T. testudinum* to faster-growing seagrass and/or algal species (observed at 7 stations, Fig. 5) will result in a change in the

overall structure of the seagrass canopy, and possibly a change in associated fauna. Sediment retention is likely to be compromised as seagrass communities shift away from broad-bladed and deeply-rooted *T. testudinum*. Faster-growing seagrass species have a less

**Table 1.** Long-term trends at CARICOMP seagrass stations, including observations on disturbances.

Site	Station	Country/Territory (sampling period: yr-yr)	Biomass	Rel. ab. - Other seagrass	Rel. Ab. - Fleshy algae	% Above/ Total Biomass	Productivity	Shoot density	Condition at beginning of monitoring	
1	1††††	Bermuda	D	-	-	D	D	I	PRIST	The pristine seagrass beds have showed catastrophic declines since 1997, and they were extirpated in 2001, likely caused by excessive grazing by the green turtle <i>Chelonia mydas</i> <sup>1,2</sup> .
2	2††††	(94-02)	D	-	-	D	D	D	INT	Florida Keys suffer from eutrophication through groundwater contamination from septic tanks <sup>3,4</sup> ; only the inshore station 5 showed indications of disturbance.
3	5*	(96-03)	I <sup>N</sup>	-	-	-	I <sup>N</sup>	I	EUTR	San Salvador had plantations, but has become a tourist destination since 1970s <sup>5</sup> .
4	6*	Bahamas	n	n	-	n	-	-	PRIST	Cayo Coco was considered as pristine, but increasing sedimentation (decreased light) could have forced changes in seagrass beds <sup>5</sup> .
5	7	(94-06)	n	D	-	n	-	-	PRIST	Increased eutrophication through ground-water discharge likely forced changes in the seagrass beds at Puerto Morelos reef lagoon <sup>6,7,8</sup> . Vegetation at the coastal fringe (station 13) was buried during hurricane Wilma (2005) <sup>7</sup> .
6	8*	Cuba	D <sup>T</sup>	-	-	I <sup>NT</sup>	n	D <sup>T</sup>	PRIST	The high number of visitors to the Grand Cayman compromise carrying capacity and cause environmental degradation, but not in protected CARICOMP areas <sup>9</sup> .
7	9*	(94-02)	D <sup>T</sup>	-	-	I <sup>NT</sup>	n	D <sup>T</sup>	PRIST	Discovery Bay has been affected by terrestrial runoff from agricultural developments and possibly by proliferation of urban developments without a central sewage system <sup>9</sup> .
8	10*	Mexico	n	I <sup>NT</sup>	I <sup>NT</sup>	I <sup>NT</sup>	I <sup>N</sup>	I	DIST	
9	11*	(93-09)	I <sup>N</sup>	n	I <sup>NT</sup>	I <sup>NT</sup>	n	I		
10	12*		n	I <sup>NT</sup>	-	I <sup>NT</sup>	I <sup>N</sup>	n		
11	13**††††		I <sup>N</sup>	n	n	I <sup>NT</sup>	n	n		
12	15	Cayman I.	-	-	-	-	I <sup>N</sup>	D <sup>T</sup>	INT	
13	17*	(97-03)	I <sup>N</sup>	-	-	I <sup>NT</sup>	I <sup>N</sup>	-	DIST	
14		Jamaica								
15		(93-99)								

Table 1. Cont.

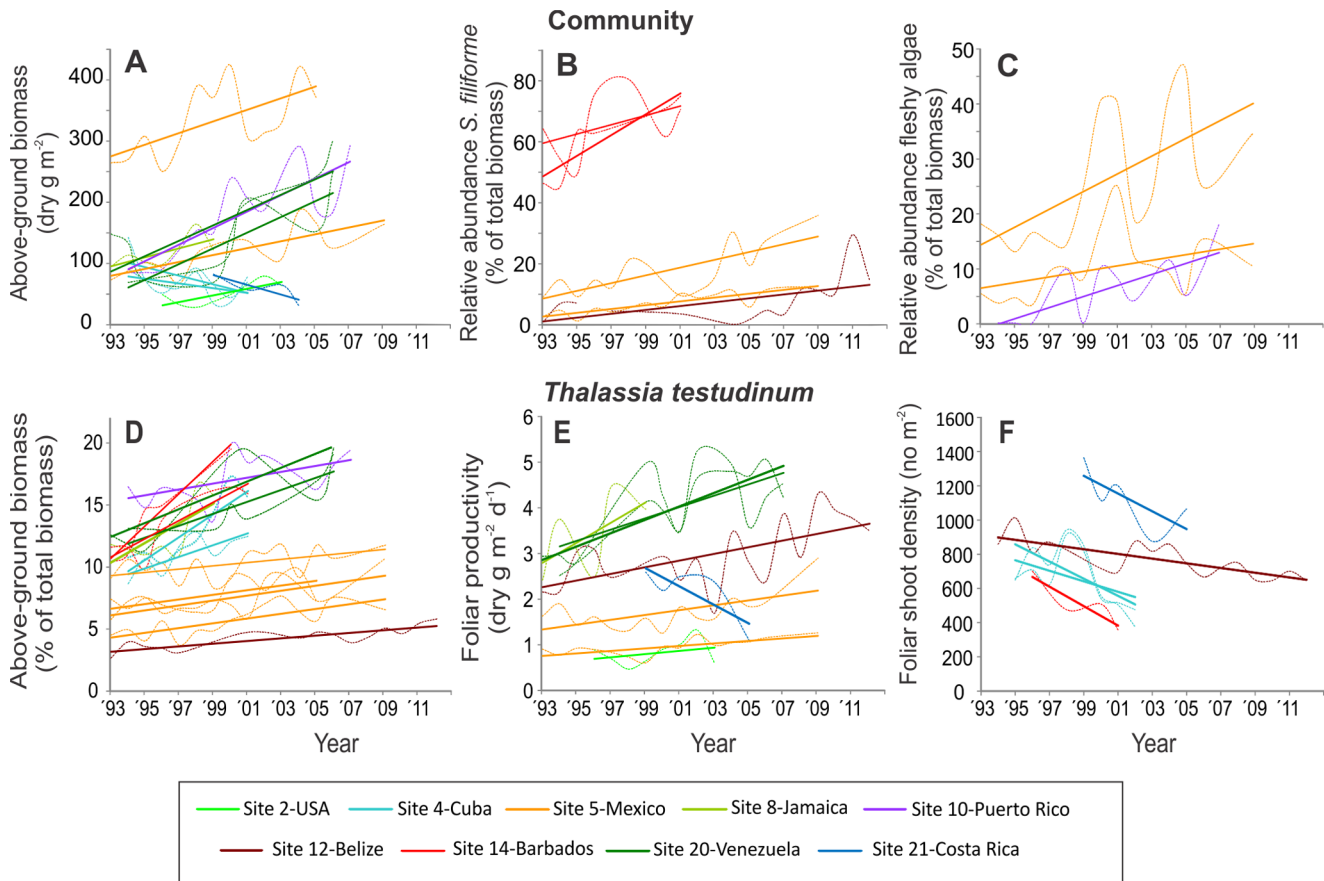
Site	Station	Country/Territory (sampling period: yr-yr)	Biomass	Rel. ab. - Other seagrass	Rel. Ab. - Fleshy algae	% Above/ Total Biomass	Productivity	Shoot density	Condition at beginning of monitoring
10	21*	Puerto Rico	<sup>N</sup>	-	<sup>INT</sup>	<sup>INT</sup>	n	n	Residential and tourism developments at and near La Parguera have increased terrigenous sediment load, and raw- and secondary sewage effluents from a treatment plant <sup>9</sup> possibly changed the seagrass community at station 21.
12	22	(94-06)	n	-	n	<sup>INT</sup>	n	n	Both sites have been subjected to loss of water clarity due to increased input of sediments and nutrients from coastal development and agriculture. 7. <i>testudinum</i> shoot density has declined at Site 25(Twin Cays) possibly due to increased sedimentation <sup>10</sup> . Station 26 (Carrie Bow Cay) was scoured by Hurricane Mitch (1998) but recovering <sup>11</sup> .
13	26	(93-12) (97-12)	n	n	n	<sup>INT</sup>	n	I	Isla Providencia (Columbia) was for a long time sparsely inhabited; recently tourism has increased, but the changes in seagrass beds were not consistent with environmental degradation. Hurricane Beta passed close by, but the seagrasses received no impact <sup>12</sup> .
14	30	Providencia	n	D	-	n	n	n	St. Lawrence has been affected by anthropogenic activities since 1880s from sugar cane cultivation, residential developments and eutrophication. Combined effects of increased sedimentation due to frequent flushing of a new sewage pipe system, excessive sea urchin grazing and storms caused collapse of the seagrass beds <sup>5, 13</sup> .
	31	(00-07)	n	n	-	n	D <sup>T</sup>	n	
	33**	Barbados	n	<sup>INT</sup>	-	<sup>INT</sup>	n	D <sup>T</sup>	DIST
15	34**	(93-01)	n	<sup>INT</sup>	-	<sup>INT</sup>	n	-	DIST
	37	San Andres	n	n	-	n	-	I	San Andres Island (Colombia) is the most densely populated oceanic island in the Caribbean. Past population increase with poorly planned development resulted in degradation of coastal ecosystems <sup>5</sup> . The seagrass community did not show changes.
	38	(99-07)	n	n	-	n	-	n	



**Table 1. Cont.**

Site	Station	Country/Territory (sampling period: yr-yr)	Biomass	Rel. ab. - Other seagrass	Rel. Ab. - Fleshy algae	% Above/Total Biomass	Productivity	Shoot density	Condition at beginning of monitoring
17	41	Colombia	n	-	-	n	n	n	PRIST Seagrass beds, mangroves and coral reefs at Chengue Bay are healthy and stable <sup>14</sup> . Abundant <i>Halimeda opuntia</i> before 1996 disappeared without obvious cause <sup>15</sup> .
18	42 43	(94-05) Tobago	n n	- -	- -	n n	n n	n n	DIST Bon Accord Lagoon has received impacts from tourism and sewage for ~50 y <sup>9</sup> . But apart from a decrease in productivity at station 45, the seagrass conditions were stable.
20	44 47*	(92-07) Venezuela	n I <sup>N</sup>	- -	- -	n I <sup>NT</sup>	D <sup>T</sup> I <sup>N</sup>	n I	DIST Morrocoy Park has been subjected to increasing land-based constructions, mangrove demolition and sewage effluents since 1970s <sup>9</sup> . Heavy rainfall in 1999 caused loss of seagrass leaves, but recovery followed within months <sup>9</sup> .
21	48* 49*	(93-06) Costa Rica	I <sup>N</sup> D <sup>T</sup>	- -	- -	I <sup>NT</sup> n	I <sup>N</sup> D <sup>T</sup>	I D <sup>T</sup>	PRIST The Limón earthquake in 1991 affected the seagrass beds at Cahuita which fully recovered after 1 y <sup>7</sup> . Seagrass beds at Station 49 may have deteriorated due to increased turbidity by sewage load, sediments and fertilizers (citrus and banana farming) <sup>15, 16</sup> .
22	50 51	(99-05) Panama	- I <sup>N</sup>	- -	- -	- -	D <sup>T</sup> n	n n	DIST <sup>16</sup> The narrow <i>Thalassia testudinum</i> bed fringing a mangrove swamp showed increased biomass over the years, which may be attributed to natural causes <sup>17</sup> .
52		(99-06)	I <sup>N</sup>	-	-	-	n	I	

Biomass: total above-ground biomass of the community; Rel abund: relative abundance (biomass) of faster growing seagrass and algal species; Other seagrass: seagrass species other than *Thalassia testudinum* (mostly *Syringodium filiforme*); % Above/Total Biomass: percentage of above-ground of total biomass of *T. testudinum* (*S. filiforme* for site 14, because *T. testudinum* was absent in later years at station 33); Productivity: productivity of leaves of *T. testudinum*. ??? Collapse of seagrass bed, \* seagrass beds showed changes that potentially indicate with human-induced environmental deterioration. Trends: I increase, D decrease, n without change, - not determined, N expected change due to increasing nutrient load, T expected change due to increasing turbidity, NT expected change due to either increasing turbidity or nutrient load, changes without symbol were not consistent with expectations of water quality deterioration (See text for further explanation). Conditions at the beginning of monitoring: PRIST (relatively) pristine (undisturbed by humans); INT Moderate disturbance; DIST Disturbed (eutrophication, terrestrial runoff, or overfishing, from [26], [29], [47]). See Table S6 for information on regression lines. Source: 1. [48], 2. [49], 3. [50], 4. [51], 5. [29], 6. [52], 7. [33], 8. [53], 9. [38], 10. [44], 11. Pers. Obs. K. Koltes, 12.Pers.Obs. H.A Oxenford, 13. [54], 14. [55], 15. [56], 16. [57], 17. [58].  
doi:10.1371/journal.pone.0090600t001



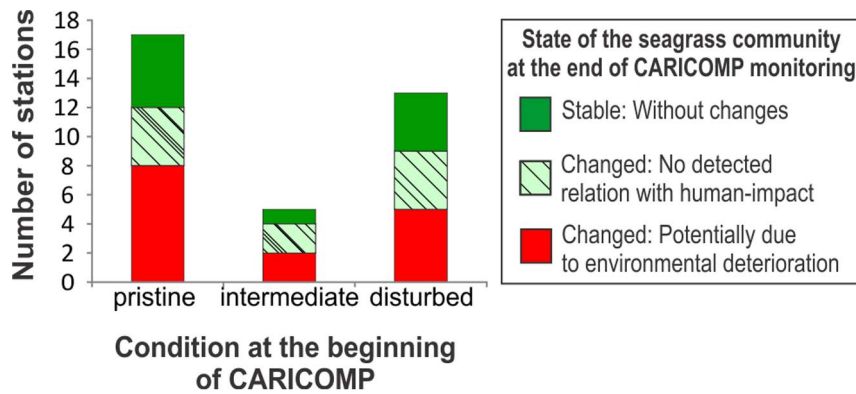
**Figure 5. Significant long-term trends in seagrass attributes and community parameters at CARICOMP monitoring stations across the nine sites that showed changes consistent with deterioration of the environmental conditions.** The broken smoothed lines connect annual average values and serve to illustrate the inter-annual variability in the data. Data from all samples per year (N = 4-9, Table S3) were used to determine the regression lines (Table S6). D. For Site14, the relationship was determined for the more persistent *Syringodium filiforme*. doi:10.1371/journal.pone.0090600.g005

developed below-ground rhizome-root system [40] which could also have negative consequences for below-ground carbon sequestration [41], or resistance of seagrass beds to hurricanes. Impacts of hurricanes are most deleterious in already disturbed beds [42], and the faster growing *S. filiforme* is much more susceptible to dislodgement than *T. testudinum* [34,43]. The fate of the seagrass beds at Barbados-St. Lawrence lagoon (site 14) is a good example of how long-term (chronic) anthropogenic stress can act synergistically with acute extreme disturbance events [overgrazing by an exceptionally strong recruitment of sea urchins, Hurricane Ivan (2004) and Tropical Storm Emily (2005)] to cause collapse of an ecosystem. Even after 7 years, this lagoon has shown only minimal recovery, with just a few impoverished *T. testudinum* plants in areas of coral rubble and a very sparse vegetation of *Halodule wrightii* appearing in the sand areas (H. Oxenford, unpublished data).

Interpretation of the long-term shifts in the seagrass communities is not unequivocal, because responses of individual communities depend on local conditions and the state of the community when monitoring began. For example, productivity and biomass were expected to decrease with decreasing water clarity, a relationship reported for Cuba (site 4) and Costa Rica (site 20-station 49). At Belize (site 12), conflicting trends at the two stations (25 and 26) resulted from differing environmental contexts and initial states of the two seagrass meadows. At station 25, a relatively low energy site inside the lagoon, increased productivity

is more likely a response to nutrient enrichment associated with the well-documented increases in turbidity [44] than to the declining light levels at this shallow (1 m) depth. Further evidence for this is that shoot density of *T. testudinum* declined by 50% from 1993 to 2012 (Fig. 5F) while the relative abundance of *S. filiforme* increased (Fig. 5B), both typical responses to declining light levels and/or nutrient enrichment. By contrast, station 26, established in 1997 in a higher-energy zone adjacent to a cut in the barrier reef-line, was scoured by Hurricane Mitch in 1998. Trends at this station largely reflect recovery of the seagrass meadow over the first 8-10 years of monitoring (Table 1).

The area of seagrass sampled by the CARICOMP protocol (0.08–0.12 m<sup>2</sup> for foliar productivity and 0.04–0.09 m<sup>2</sup> for biomass) is smaller than that of more recently established monitoring programs such as Seagrass Watch [45], Seagrass Monitoring in the Florida Keys National Marine Sanctuary [46], or Seagrass Net [25], that employ cover estimates of the vegetation in 5–11 quadrats (0.25–1.0 m<sup>2</sup>) along one to three 50m-long transects (supplemented with small samples of leaves, complete plants, sediments or seeds). Small sample size assumes a relatively homogeneous distribution of the species (or species groups). Long-living seagrasses (such as *T. testudinum*) in continuous beds, without obvious environmental gradients, may fulfil this assumption; however, a larger scale-sampling scheme (such as that of Seagrass Watch or Seagrass Net) may be necessary for less-abundant and more irregular distributed species such as the more ephemeral



**Figure 6. State of the long-term monitoring stations at the beginning (1993) and end (2007–2012) of the CARICOMP program.** Pristine: Relatively undisturbed stations at the start of the program. Intermediate: Stations moderately disturbed by human-impact at the beginning of the program. Disturbed: Stations which had undergone chronic human-induced impacts before the initiation of the monitoring program. doi:10.1371/journal.pone.0090600.g006

seagrasses (e.g. *Halodule* spp. or *Halophila* spp.) or rooted macroalgae. The CARICOMP measures of foliar productivity and total plant biomass are destructive and therefore cannot be employed on a large scale (and also because sample processing is labor-intensive), but these measures are less subjective than cover estimates. In addition, they may be more sensitive to small shifts in plant abundance or biomass distribution and detect responses to environmental change sooner than monitoring programs based on less precise estimates of abundance such as vegetation cover. However, cover estimates are useful to assess loss of seagrasses over large areas under regimes of relatively severe (human-induced) stress (e.g. [25]). Thus, optimal design of a monitoring protocol depends on its goals, site- and plant characteristics and logistics. Regardless of the protocol, it is paramount for determining trends in seagrass communities that consistent observations be made over long periods (5–10 y at least). The CARICOMP program depended on voluntary participation and local resources, which resulted in large differences in sampling frequency and periods among sites. Only 17 of the 22 sites obtained sufficient data for analysis of long term trends in the seagrass communities; and even among these sites the sampling period (5–15 y, Table 1) and frequency (24–124 biomass samples, 30–202 productivity samples, Table S6) varied considerably. We may therefore, have missed possible changes at stations which were sampled infrequently or for shorter periods (5 or 6 y).

CARICOMP was a pioneering monitoring program, and this study has shown that the simple and low-cost methods used were sufficient to discern long-term trends in the seagrass communities. We suggest that changes across various parameters are consistent with deterioration of the coastal environment, thereby indicating sites that would benefit from further studies and management efforts. We recognize that drivers of change were poorly covered in this program, and suggest that future monitoring of the long-term trends should include relevant environmental measures, such as nutrient availability (C, N, P contents in plant tissues) and sediment (anoxia, organic matter) conditions, in addition to (pulse fluctuations in) water transparency, temperature and salinity. Environmental degradation often involves multiple interacting stressors, and long-term monitoring programs such as CARICOMP can only determine causal factors of change when ecological data are viewed together with supplemental data on environmental conditions.

## Supporting Information

**Figure S1 Plots of the mean monthly shoot growth rates.** Vertical bars represent 95% confidence limits. Horizontal bar above X-axis represents periods of High (black) and Low (grey) growth season. See legend Table S5 for further information. Note differences in ordinate scales for growth. +: Mean monthly SST. (DOCX)

**Figure S2 Passage of hurricanes and storms.** Tracks of named storms or hurricanes that passed within 1 degree (60 nm or 111 km) of any CARICOMP seagrass site (indicated by the numbered circles) during the observation periods reported in Table S1. The size of the event when passing the site was not considered, thus the atmospheric and hydrological impacts at the locations may have varied from weak to severe, and other events of impact (e.g surge or excessive rains) may not be included. Servicio Académico de Monitoreo Meteorológico y Oceanográfico, Unidad Académica de Sistemas Arrecifales, Instituto de Ciencias del Mar y Limnología, Universidad Nacional Autónoma de México). (DOCX)

**Table S1 CARICOMP seagrass monitoring sites.** General information on the sites and stations (ordered from North to South), together with sampling periods (as mm/yy) for *Thalassia testudinum* leaf productivity (Table S2) and community biomass (Table S3). Hurricanes/Storms: year of passage ('yy) and max. strength when passing the affected location (T Tropical Storm, H hurricane) in parenthesis (see Figure S2). nd not determined. British OT: British Overseas Territory. (DOCX)

**Table S2 *Thalassia testudinum* leaf dynamics.** Depths (below MTL) at the stations and average values ( $\pm$  SE) for parameters of *T. testudinum* leaf productivity, biomass and density. N: number of samples (10 $\times$ 20 cm, see S1 for period). N for foliar shoot density is less at some sites because this measure was introduced later in the protocol. Secchi: mean Secchi readings from 1993–1995 (from CARICOMP, 1998). \*Celestun is in the Gulf of Mexico, na: not available, nd: not determined. (DOCX)

**Table S3 Community biomass.** Average values ( $\pm$  SE) of the biomass of the community by vegetation group. N: number of (core) samples (see S1 for period). Core diam: Diameter of the core samples. Total: biomass of above- and belowground live tissues. AB: above-ground biomass. Biomass of calcareous algae expressed

as somatic (decalcified) weight, ~85% of the calcified dry weight is  $\text{CaCO}_3$ . Below-ground tissues of the algae were not considered. Biomass cores were not taken at Site 2 (Florida). “Other grass”: mostly *Syringodium filiforme* but includes *Halodule wrightii* at Station 7. \* Celestun is in the Gulf of Mexico. na: not applicable. (DOCX)

**Table S4 Intra-annual variability in *Thalassia testudinum* leaf productivity.** Results of One-sample t-test for significant differences of  $\Delta P$  (deviations from general mean leaf productivity) during High- and Low-growth season at different latitudes. H0: Average  $\Delta P = 0$ ,  $\alpha = 0.05$ . (DOCX)

**Table S5 Correlations between temperature, light and *Thalassia testudinum* leaf growth.** Correlations between mean monthly SST (Sea Surface temperature, °C), H daylight (Hours of daylight) and shoot growth rates of *Thalassia testudinum* at USA-Florida Keys (Site 2, 1996–2003), Mexico-Puerto Morelos (Site 5, 1990–1991; from Van Tussenbroek BI [1995] *Thalassia testudinum* leaf dynamics in a Mexican Caribbean reef lagoon. Mar Biol 122: 33–40) and Tobago-Bon Accord Lagoon (Site 18, 1997–2007), N number of months, ns: not significant. Hours daylight were obtained from <http://astro.unl.edu/classaction/animations/coordsmotion/daylighthousexplorer.html>. Mean monthly SST were from: NOAA Coral Reef Watch, Coral Bleaching Virtual Stations ([http://www.osdpd.noaa.gov/ml/ocean/cb/virtual\\_stations.html](http://www.osdpd.noaa.gov/ml/ocean/cb/virtual_stations.html))-Sombbrero Reef, Florida (Site 2), Rodríguez-Martínez RE, Ruíz-Rentería F, Van Tussenbroek BI, Barba-Santos G, Escalante-Mancera E et al. [2010] State and environmental tendencies of the Puerto Morelos CARICOMP site, Mexico. Rev Biol Trop 58: 23–43 (Site 5), and R. Juman, J. Gomez [unpublished data] (Site 18). (DOCX)

**Table S6 Regression lines of trends.** Results for the linear regressions of selected parameters vs year to indicate possible trends. Regressions were computed for those stations and parameters when the sampling covered at least 5 y with at least six sampling events and at least 50% of the samples had values >0. \*: not determined, ns: not significant, negative t indicated a

## References

- Green EP, Short FT (2003) Editors, World Atlas of Seagrasses. Prepared by the UNEP World Conservation Monitoring Centre. University of California Press, Berkeley, USA. 298 p.
- Gillanders BM (2006) Seagrasses, fish and fisheries. In: Larkum AWD, Orth RJ, Duarte CM, editors. Seagrasses: Biology, Ecology and Conservation, Springer, Dordrecht, The Netherlands. pp. 503–536.
- Madsen JD, Chambers PA, James WF, Koch EW, Westlake DF (2001) The interaction between water movement, sediment dynamics and submersed macrophytes. Hydrobiologia 444: 71–84.
- Romero J, Lee K-S, Pérez M, Mateo MA, Alcoverro T (2006) Nutrient dynamics in seagrass ecosystems. In: Larkum AWD, Orth RJ, Duarte CM, editors. Seagrasses: Biology, Ecology and Conservation, Springer, Dordrecht, The Netherlands. pp. 227–254.
- Duarte CM, Middelburg JJ, Caraco N (2005) Major role of marine vegetation on the oceanic carbon cycle. Biogeosciences 2: 1–8.
- Fourqurean JW, Duarte CM, Kennedy, Marbà N, Holmer M, et al. (2012) Seagrass ecosystems as a globally significant carbon stock. Nature Geosc 5: 505–509.
- Heck KL Jr, Carruthers TJB, Duarte CM, Hughes AR, Kendrick G, Orth RJ, Williams SW (2008) Trophic transfers from seagrass meadows subsidize diverse marine and terrestrial consumers. Ecosystems 11: 1198–1210.
- Nagelkerken I, Kleijnen S, Klop T, Van den Brand RACJ, Cocheret de la Morinière E, et al. (2001) Dependence of Caribbean reef fishes on mangroves and seagrass beds as nursery habitats: a comparison of fish faunas between bays with and without mangroves/seagrass beds. Mar Ecol Prog Ser 214: 225–235.
- Unsworth RKF, Salinas de León P, Garrard SL, Jompa J, Smith DJ, et al. (2008) High connectivity of Indo-Pacific seagrass fish assemblages with mangrove and coral reef habitats. Mar Ecol Prog Ser 353: 213–224.
- Verweij MC, Nagelkerken I, De Graaff D, Peeters M, Bakker EJ, et al. (2006) Structure, food and shade attract juvenile coral reef fish to mangrove and seagrass habitats: a field experiment. Mar Ecol Prog Ser 306: 257–268.
- Wefer G (1980) Carbonate production by algae *Halimeda*, *Penicillus* and *Padina*. Nature 285: 323–324.
- Nelsen JE, Ginsburg RN (1985) Calcium carbonate production by epibionts on *Thalassia testudinum* in Florida Bay. J Sedim Petrol 56:622–628
- Van Tussenbroek B I, Van Dijk J-K (2007) Spatial and temporal variability in biomass and production of psammophytic *Halimeda incrassata*, in a Caribbean reef lagoon. J Phycol 43: 69–77.
- Linton DM, Warner GF (2003) Biological indicators in the Caribbean coastal zone and their role in integrated coastal management. Ocean Coast Manage 46: 261–276.
- Orth RJ, Carruthers TJB, Dennison WC, Duarte CM, Fouquerean JW, et al. (2006) A global crisis for seagrass ecosystems. Bioscience 56: 987–996.
- Dennison WC, Orth RJ, Moore KA, Stevenson JC, Carter V (1993) Assessing water quality with submersed aquatic vegetation. Bioscience 43: 86–94.
- Livingston RJ, McGlynn SE, Niu X (1998) Factors controlling seagrass growth in a gulf coastal system: Water and sediment quality and light. Aq Bot 60: 135–159.
- Duarte CM (1990) Seagrass nutrient content. Mar Ecol Prog Ser 67: 201–207.
- Fourqurean JW, Zieman JC, Powel GVN (1992) Phosphorus limitation of primary production in Florida Bay: Evidence from C:P:N ratios of the dominant seagrass *Thalassia testudinum*. Limnol Oceanogr 37: 162–171.
- Short FT (1987) Effects of sediment nutrients on seagrasses: Literature review and mesocosm experiment. Aq Bot 27: 41–67.
- Udy JW, Dennison WC (1997) Growth and physiological responses of three seagrass species to elevated sediment nutrients in Moreton Bay, Australia. J Exp Mar Biol Ecol 217: 253–277.

negative slope. The significance level ( $\alpha$ ) is 0.05, but a Bonferroni correction is applied to this level of significance, because the parameters are derived from the same cores (Total above-ground biomass. Relative abundance of faster-growing seagrass, Relative abundance of faster growing fleshy algae, % Above-ground/total biomass for *Thalassia testudinum*) or quadrats (Productivity, Foliar shoot density of *T. testudinum*). The results of the regressions of foliar weight per shoot of *T. testudinum* is also given, to facilitate interpretations of the results, although this was not a parameter for potential degradation of the coastal environment. (DOCX)

## Acknowledgments

The following persons or institutions also aided in seagrass sampling: Fourqurean Laboratory at Florida International University, Donald T. Gerace Research Center, Daily Zuñiga and Lidice Clero (Centro de Investigaciones de Ecosistemas Costeros de Cayo Coco, Cuba), M. Guadalupe Barba Santos (UNAM, Mexico), Jorge A. Herrera-Silveira (CINVESTAV, Mexico), Phillippe G. Bush (Dept. of Environment, Grand Cayman), Francisco X. Gerales (CIBIMA, Dominican Republic), Jorge R. García (University of Puerto Rico, Puerto Rico), Eden Garcia (University College of Belize Marine Research Centre, Belize), June M. Mow Robinson (CORALINA, Colombia), Jaime Garzón-Ferreira (IN- VEMAR, Colombia), Renata Goodridge (CERMES, Barbados), Carmabi Foundation, Curaçao, Ramón Varela (EDIMAR, Venezuela), Aldo Cróquer (Universidad Simón Bolívar, Venezuela), Daisy Perez (INTEC- MAR, Venezuela), Penny Barnes and Arcadio Castillo (Smithsonian Tropical Research Institute, Panama). The CARICOMP seagrass team is grateful to J. Zieman who developed the sampling protocol and to John C. Ogden and members of the CARICOMP Steering Committee. This is contribution number 938 of the Caribbean Coral Reef Ecosystems Program (CCRE), Smithsonian Institution.

## Author Contributions

Performed the experiments: BIT JC RC ACF PMHG HMG GEJ RJ KHK HAO ARR JSV SRS JJT EW. Analyzed the data: BIT. Contributed reagents/materials/analysis tools: BIT JC RC ACF PMHG HMG GEJ RJ KHK HAO ARR JSV SRS JJT EW. Wrote the paper: BIT JC RC ACF PMHG HMG GEJ RJ KHK HAO ARR JSV SRS JJT EW.

22. Armitage AR, Frankovich TA, Fourqurean JW (2011) Long-term effects of adding nutrients to an oligotrophic coastal environment. *Ecosystems* 14: 430–444.
23. Duarte CM (1991) Seagrass depth limits. *Aq Bot* 40: 363–377.
24. Fourqurean JW, Boyer JN, Durako MJ, Hefly LN, Bradley J, et al. (2003) Forecasting responses of seagrass distributions to changing water quality using monitoring data. *Ecol Appl* 13: 474–489.
25. Short FT, Koch EW, Creed JC, Magalhães KM, Fernandez E, et al. (2006) SeagrassNet monitoring across the Americas: case studies of seagrass decline. *Mar Ecol* 27: 277–289.
26. CARICOMP (1994) CARICOMP Methods Manual-Level I. Manual of Methods for Mapping and Monitoring of Physical and Biological Parameters in the Coastal Zone of the Caribbean. CARICOMP Data Management Centre, University of the West Indies, Mona, Kingston, Jamaica (available at [http://www.ima.gov.tt/home/images/stories/caricomp\\_manual\\_2001.pdf](http://www.ima.gov.tt/home/images/stories/caricomp_manual_2001.pdf))
27. Short F, Caruthers T, Dennison W, Waycott M (2007) Global seagrass distribution and diversity: A bioregional model. *J Exp Mar Biol Ecol* 350: 3–20.
28. Short FT, Polidoro B, Livingstone SR, Carpenter KE, Bandeira S, et al. (2011) Extinction Risk Assessment of the World's Seagrass Species. *Biol Conserv* 144: 1961–1971.
29. CARICOMP (2004) Caribbean Coastal Marine Productivity Program: 1993–2003, Linton D, Fisher T, editors. CARICOMP Program, 88 p.
30. Chollett I, Mumby PJ, Müller-Karger FE, Hu C (2012) Physical environments of the Caribbean Sea. *Limnol Oceanogr* 57: 1233–1244.
31. Liaw A (2012) CRAN-R randomforest package: Breiman and Cutler's random forests for classification and regression. <http://cran.r-project.org/web/packages/randomForest>.
32. Zieman J, Penchaszadeh P, Ramirez JR, Perez D, Bone D, et al. (1997) Variation in ecological parameters of *Thalassia testudinum* across the CARICOMP network. Proceedings of the 8th International Coral Reef Symposium 1, Panama, 663–668.
33. Rodríguez-Martínez RE, Ruiz-Rentería F, Van Tussenbroek BI, Barba-Santos G, Escalante-Mancera E, et al. (2010) State and environmental tendencies of the Puerto Morelos CARICOMP site, Mexico. *Rev Biol Trop* 58 (Suppl. 3): 23–43.
34. Cruz-Palacios V, Van Tussenbroek BI (2005) Simulation of hurricane-like disturbances on a Caribbean seagrass bed. *J Exp Mar Biol Ecol* 324: 44–60.
35. Byron D, Heck KL Jr (2006) Hurricane effects on seagrass along Alabama's Gulf Coast. *Estuar Coasts* 29: 939–942.
36. Montcreiff CA, Randall TA, Calswell JD, McCall RK, Blackburn BR, et al. (1999) Short-term effects of hurricane Georges on seagrass populations in the north Chantrelleur Island: Patterns as a function of sampling scale. *Gulf Res Reports* 11: 74–75. 36.
37. Fonseca MS, Kenworthy WJ, Whitfield PE (2000) Temporal dynamics of seagrass landscapes: a preliminary comparison of chronic and extreme disturbance events. *Biol Mar Medit* 7:373–376.
38. Davis SE, Cabelt JE, Childers DL (2004) Importance of storm events in controlling ecosystem structure and function in a Florida Gulf Coast Estuary. *J Coast Res* 20: 1198–1208.
39. CARICOMP (1998) CARICOMP - Caribbean coral reef, seagrass and mangrove sites, Kjerve B, editor. Coastal region and small islands papers 3 (UNESCO, Paris), XIV + 347 p.
40. Marbà N, Duarte CM (2003) Scaling of ramet size and spacing in seagrasses: implication for stand development. *Aq Bot* 77: 87–98.
41. McLeod E, Chmura GL, Bouillon S, Salm R, Björk M, et al. (2011) A blueprint for blue carbon: toward an improved understanding of the role of vegetated coastal habitats in sequestering CO<sub>2</sub>. *Frontiers Ecol Environ* 9:552–560.
42. Whitfield PE, Kenworthy WJ, Hammerstrom KK, Fonseca MS (2002) The role of a hurricane in expansion of disturbances initiated by motor vessels on subtropical seagrass banks. *J Coast Res* 37: 68–99.
43. Van Tussenbroek BI, Barba Santos MG, Van Dijk JK, Sanabria-Alcaraz SNM, Téllez-Calderón ML (2008) Selective elimination of rooted plants from a tropical seagrass bed in a back-reef lagoon: a hypothesis tested by hurricane Wilma (2005). *J Coast Res* 24: 278–281.
44. Koltés KH, Opishinski T (2009) Patterns of water quality and movement in the vicinity of Carrie Bow Cay, Belize. *Smiths Contrib Mar Sc* 38: 379–390.
45. McKenzie LJ, Long L, Coles RG, Roder CA (2000) Seagrass-Watch: Community based monitoring of seagrass resources. *Biol Mar Medit* 7: 393–396.
46. Fourqurean JW, Willsie A, Rose C D, Rutten LM (2001) Spatial and temporal pattern in seagrass community composition and productivity in south Florida. *Mar Biol* 138: 341–354.
47. Jordán-Dahlgren E, Cortés J, Smith SR, Parker C, Oxenford HA, et al. (1997) Physiography and setting of CARICOMP sites: a pattern analysis. *Proc 8th Int Coral Reef Symp* 1, Panama. pp. 647–650.
48. Murdoch TJT, Glasspool AF, Outerbridge M, Ward J, Manuel S, et al. (2007) Large-scale decline in offshore seagrass meadows in Bermuda. *Mar Ecol Prog Ser* 339: 123–130.
49. Fourqurean JW, Manuel S, Coates, Kenworthy WJ, Smith SR (2010) Effects of excluding sea turtle herbivores from a seagrass bed: Overgrazing may have led to loss of seagrass meadows in Bermuda. *Mar Ecol Prog Ser* 419: 223–232.
50. Szmant AM, Forrester A (1996) Water column and sediment nitrogen and phosphorus distribution patterns in the Florida Keys, USA. *Coral Reefs* 15: 21–41.
51. Fourqurean JW, Zieman JC (2002) Nutrient content of the seagrass *Thalassia testudinum* reveals regional patterns of relative ability of nitrogen and phosphorus in the Florida Keys USA. *Biogeochemistry* 61: 229–245.
52. Carruthers TJB, Van Tussenbroek BI, Dennison WC (2005) Influence of submarine springs and wastewater on nutrient dynamics of Caribbean seagrass meadows. *Estuar Coast Shelf Sci* 64: 191–199
53. Van Tussenbroek BI (2011) Dynamics of seagrasses and associated algae in coral reef lagoons. *Hidrobiológica* 21: 293–310.
54. Rodríguez-Ramírez A, Reyes-Nivia MC (2008) Evaluación rápida de los efectos del huracán Beta en la Isla Providencia (Caribe Colombiano). *Boletín de Investigaciones Marinas y Costeras INVEMAR* 37 ([www.oceandocs.net/handle/1834/3481](http://www.oceandocs.net/handle/1834/3481))
55. Rodríguez-Ramírez A, Garzón-Ferreira J, Batista-Morales A, Gil DL, Gómez-López DI, et al. (2010) Temporal patterns in coral reef, seagrass and mangrove communities from Chengue bay CARICOMP site (Colombia): 1993–2008. *Rev Biol Trop* 58 (Suppl. 3): 45–62.
56. Fonseca AC, Nielsen V, Cortés J (2007) Monitoreo de pastos marinos en Perezoso, sitio CARICOMP en Cahuita, Costa Rica. *Rev Biol Trop* 55: 55–66.
57. Cortés J, Fonseca AC, Nivia-Ruiz J, Samper-Villareal J, Salas E (2010) Monitoring coral reefs, seagrasses and mangroves in Costa Rica (CARICOMP). *Rev Biol Trop* 58 (Suppl. 3): 1–22.
58. D'Croz L, Del Rosario JB, Góndola P (2005) The effect of fresh water runoff on the distribution of dissolved inorganic nutrients and plankton in the Bocas del Toro Archipelago, Caribbean Panama. *Caribb J Sc* 41: 414–429.