

INTERFACES DE GECEM DATABASE

Pérez-García, M., & Díaz-Ordóñez, M. (2021). *GECEM Project Database version 2021*. *GECEM Project Database*. Retrieved December 10, 2021, from <https://gecem.cica.es>

VERSIÓN DICIEMBRE 2021

Manuel Pérez-García

Department of History, Shanghai Jiao Tong University

Manuel Díaz-Ordóñez

Department of Economy and Economic History. University of Seville

PANTALLA DE ACCESO COMÚN ALA BASE DE DATOS EN DOMINIO: URL <https://www.gecemdatabase.eu/>



Video Presentation
GECEM Database



GECEM DATABASE



username

password

Login

Query System



The GECEM Project Database version 2021 is licensed under a [Creative Commons Attribution-ShareAlike 4.0 International License](https://creativecommons.org/licenses/by-sa/4.0/). This Open Access Database is sponsored and financially supported by the GECEM Project (Global Encounters between China and Europe: Trade Networks, Consumption and Cultural Exchanges in Macau and Marseille, 1680–1840), a project hosted by the Pablo de Olavide University (UPO) of Seville (Spain). And it is hosted by Centro Informático Científico de Andalucía (CICA) belonging to Junta de Andalucía (Spain).

The GECEM Project is funded by the ERC (European Research Council) Starting-Grant, ref. 679371, under the European Union's Horizon 2020 Research and Innovation Programme, www.gecem.eu. The Principal Investigator is Professor Manuel Perez-Garcia (Distinguished Researcher at UPO and Tenured Associate Professor at School of Humanities, Shanghai Jiao Tong University). This research has also been part of the academic activities of the Global History Network in China, www.globalhistorynetwork.com



GECEM DATABASE

HOW TO CITE

Logout



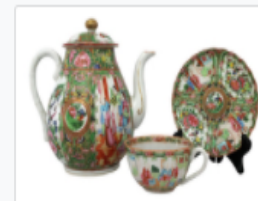
Analysis of Fashions
over Time



Asia-Europe Trade
Relations



Exports/Intermediation
of Asian Goods



Consumption, Social
Status and Residence




The GECEM Project Database version 2021 is licensed under is licensed under a [Creative Commons Attribution-ShareAlike 4.0 International License](https://creativecommons.org/licenses/by-sa/4.0/) This Open Access Database is sponsored and financially supported by the GECEM Project (Global Encounters between China and Europe: Trade Networks, Consumption and Cultural Exchanges in Macau and Marseille, 1680–1840), a project hosted by the Pablo de Olavide University (UPO) of Seville (Spain). And it is hosted by Centro Informático Científico de Andalucía (CICA) belonging to Junta de Andalucía (Spain).

The GECEM Project is funded by the ERC (European Research Council) Starting-Grant, ref. 679371, under the European Union's Horizon 2020 Research and Innovation Programme, www.gecem.eu. The Principal Investigator is Professor Manuel Perez-Garcia (Distinguished Researcher at UPO and Tenured Associate Professor at School of Humanities, Shanghai Jiao Tong University). This research has also been part of the academic activities of the Global History Network in China, www.globalhistorynetwork.com

INTERFAZ PRINCIPAL DE LA CONSULTA ANALYSIS OF FASHIONS OVER TIME: URL

<https://gecem.cica.es/queries/fashion>



Analysis of Fashions over Time

HOW TO CITE

Logout

Loading ...

Year	Document type			
Product	Type	Color	Product origin	Type origin
Social actor	Gender	Noble title	Residence Place	Occupation
Reset all filters				

Id **Year** **Document type** **Product** **Type** **Color** **Feature** **Product origin** **Type origin** **Social actor** **Gender** **Noble title** **Residence place** **Occupation** → Click to switch column visibility

Download (csv format) ▾

INTERFAZ PRINCIPAL DE LA CONSULTA ASIA-EUROPE TRADE RELATIONS: URL

<https://gecem.cica.es/queries/aetrade>



Asia-Europe Trade Relations

HOW TO CITE

Logout

Year Departure port Arrival port
Product Type Quantity Value/unit Origin
Social actor
Reset all filters

Id Year Departure port Arrival port Product Type Quantity Value/unit Origin Social actor → Click to switch column visibility

Download (csv format) -

Show 10 entries

Search:

Id	Year	Departure port	Arrival port	Product	Type	Quantity	Value/unit	Origin	Social actor
5802	1772	Manila	Cádiz	Seda	Seda cruda/ seda pelo	1		Lanquín o Xauquin [Zhaoqing, Zhàoqing 肇庆市]	
5805	1772	Manila	Cádiz	Seda mazo	Seda cruda/ seda pelo	1		Lanquín o Xauquin [Zhaoqing, Zhàoqing 肇庆市]	
5809	1772	Manila	Cádiz	Seda	Seda	1		China	
5818	1772	Manila	Cádiz	Seda mazo	Seda cruda/ seda pelo	1		Lanquín o Xauquin [Zhaoqing, Zhàoqing 肇庆市]	
5827	1772	Manila	Cádiz	Rasos	Raso o satén o saetí	1		Lanquín o Xauquin [Zhaoqing, Zhàoqing 肇庆市]	

INTERFAZ COMÚN DE ACCESO A LAS HERRAMIENTAS DE VISUALIZACIÓN EN EL SISTEMA DE CONSULTAS

Donut charts

[Click here to refresh the charts](#)

Select data to draw

Year

Select data to draw with minimum grouping

Year

Sankey diagram

[Click here to refresh the diagram](#)

Year

Year

Map

[Click here to refresh the map](#)

Select data to draw

Product