

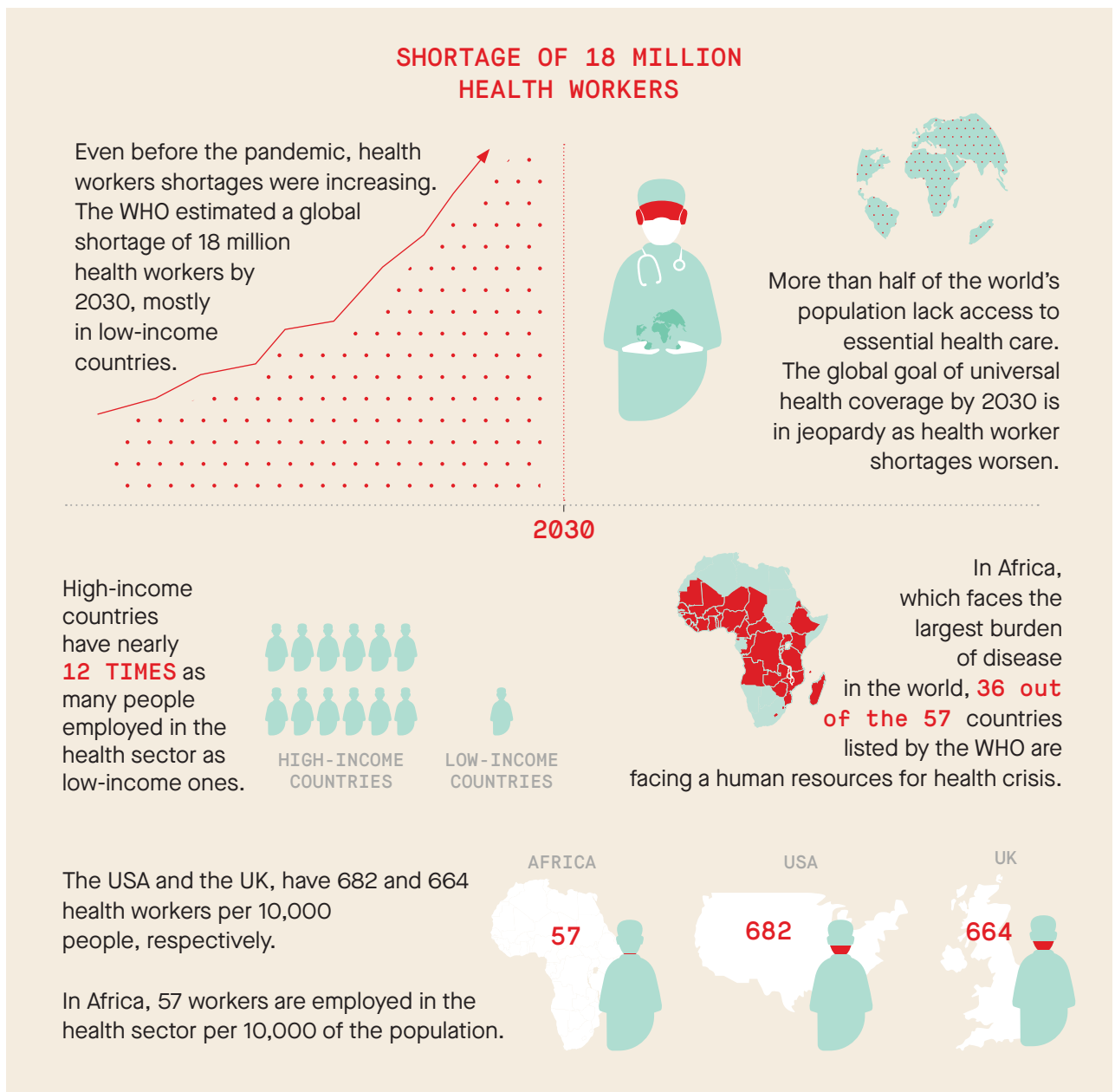
# FACT SHEET 1: WHAT WE KNOW ABOUT THEIR SITUATION

## MIGRANT HEALTH AND SOCIAL CARE WORKERS

### DURING THE COVID-19 PANDEMIC

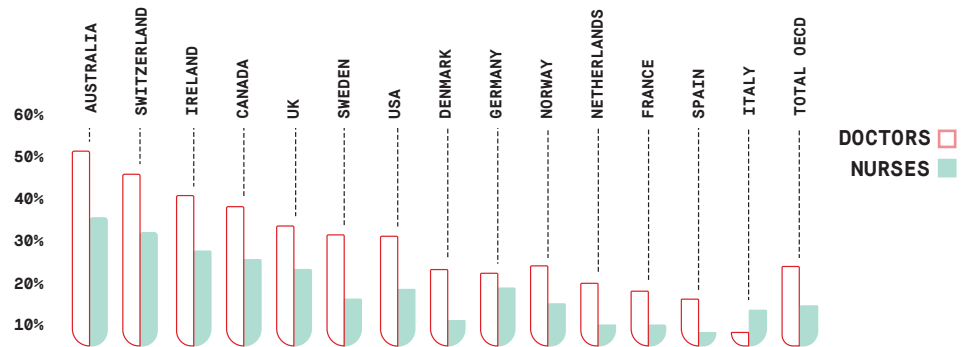
**M**igrant health and social care workers are playing a critically important role on the front-line of health care during Covid pandemic. Countries badly hit by the pandemic have faced extreme pressure on their health services and many health workers have suffered, sometimes fatally. Many of these countries are reliant on migrant health workers, the majority of whom come from poorer countries with weak health systems.

### RICH AND POOR COUNTRIES ARE BATTLING THE PANDEMIC, BUT ON AN UNEQUAL FOOTING



## THEY ARE ESSENTIAL WORKERS ON THE FRONT-LINE...

Across the OECD, **24.2% of doctors** and **15.8% of nurses** are foreign born (based on 27 countries that rely on migrant health workers to staff their health services).



In the UK and USA, two countries very badly hit by the pandemic, around one-third of doctors and one-fifth of nurses are foreign-born. In Australia and Switzerland, this proportion rises to about 50% for doctors and over 30% for nurses

## ...AND THEY ARE FACING THE BIGGEST RISKS

On the front-line of Covid care, migrant health workers, most of whom are women, are disproportionately affected by infection and death from Covid, and many experience exhaustion and stress.

**70%**  
FEMALE

Women make up **70%** of health workers and a large majority are on the front-line of care for Covid patients.

An average of **2 in 5** health workers globally are fully vaccinated.

Many health workers on the front-line are experiencing burn-out and stress, and many say they will leave their jobs as a result.

But in Africa only **1 in 10** of health workers has been fully vaccinated.

In October 2021, the WHO reported that as many as 180,000 healthcare workers worldwide have died by Covid-19.

# 180,000 DEATHS

Our calculations show that as many as **20% (36,000)** of these deaths are deaths of migrant health workers

**36,000**

### SOURCES:

1. OECD Health Workforce Statistics 2. World Health Organization (2021) The impact of COVID-19 on health and care workers: a closer look at deaths. WHO. <https://apps.who.int/iris/handle/10665/345300> 3. ILO Stat: <https://ilostat ilo.org/covid-19-are-there-enough-health-workers/> 4. Migration Data Portal: <https://www.migrationdataportal.org/themes/migration-data-relevant-covid-19-pandemic> 5. PSI (2020) Building Resilience Across Borders: <https://publicservices.international/resources/publications/building-resilience-across-borders?id=11444&lang=en>

Pillinger J, Gencianos G and Yeates N (2021) 'What we know about their situation', Migrant health and social care workers during the covid-19 pandemic **Factsheet 1**, Public Services International-The Open University: Ferney Voltaire/Milton Keynes.