



How to perform and interpret the lung ultrasound by the obstetricians in pregnant women during the SARS-CoV-2 pandemic

SARS-CoV-2 pandemisinde gebeler akciğer ultrasonunun obstetrisyenler tarafından yapılması ve yorumlanması

© Murat Yassa¹, © Memiş Ali Mutlu¹, © Erkan Kalafat², © Pınar Birol¹, © Cihangir Yirmibeş¹, © Arzu Bilge Tekin¹, © Kemal Sandal¹, © Esra Ayanoglu², © Mahmut Yassa³, © Ceyhun Kılınç¹, © Niyazi Tug¹

¹University of Health Sciences Turkey, Şehit Prof. Dr. İlhan Varank Sancaktepe Training and Research Hospital, Clinic of Obstetrics and Gynecology, İstanbul, Turkey

²Ankara University Faculty of Medicine, Department of Obstetrics and Gynecology, Ankara, Turkey

³Selahaddin Eyyubi State Hospital, Clinic of Obstetrics and Gynecology, Diyarbakır, Turkey

Abstract

Objective: Evidence for the use of lung ultrasound scan (LUS) examinations in coronavirus 2019 pneumonia is rapidly growing. The safe and non-ionizing nature of LUS drew attention, particularly for pregnant women. This study aimed to contribute to the interpretation of LUS findings in pregnant women for the obstetricians.

Materials and Methods: LUS was performed to pregnant women suspected of or diagnosed as having Severe Acute Respiratory syndrome coronavirus-2 (SARS-CoV-2) in the first 24 hours of admission. Fourteen areas (3 posterior, 2 lateral, and 2 anterior) were scanned per patient for at least 10 seconds along the indicated anatomical landmarks. The scan was performed in supine, right-sided and left-sided positions, respectively. Each area was given a score between 0 and 3 according to the specific pattern.

Results: In this study, 21 still images and 21 videoclips that enabled dynamic and real-time evaluation were provided. Pleural line assessment, physiologic A-lines, pathologic B-lines, light beam pattern, white lung pattern, and specific patterns for quick recognition and evaluation are described.

Conclusion: The potential advantages and limitations of LUS and its areas of use for obstetricians are discussed. LUS is a promising supplementary imaging tool during the SARS-CoV-2 pandemic. It is easy to perform and may be feasible in the hands of obstetricians after a brief didactic course. It may be a first-line imaging modality for pregnant women.

Keywords: Lung ultrasound, pregnancy, SARS-CoV-2, COVID-19

Öz

Amaç: Koronavirüs 2019 pnömonisinde akciğer ultrason taraması (LUS) muayenesinin kullanımına ilişkin kanıtlar hızla artmaktadır. LUS'nin güvenli ve iyonlaştırıcı olmayan doğası, özellikle hamile kadınlar için dikkat çekmektedir. Bu çalışma, gebe kadınlarda kadın doğum uzmanları için LUS bulgularının yorumlanmasına katkıda bulunmayı amaçlamıştır.

Gereç ve Yöntemler: LUS, başvurudan sonraki ilk 24 saat içinde Şiddetli Akut Solunum Yolu sendromu koronavirüsü 2 (SARS-CoV-2) şüphesi olan veya tanısı konan gebe kadınlara uygulandı. Belirtilen anatomik işaretler boyunca hasta başına on dört alan (3 posterior, 2 lateral ve 2 anterior) en az 10 saniye tarandı. Tarama sırasıyla sırt üstü, sağ taraflı ve sol taraflı pozisyonlarda gerçekleştirildi. Her bölgeye, spesifik örüntüye göre 0 ile 3 arasında bir puan verildi.

Bulgular: Bu çalışmada, dinamik ve gerçek zamanlı değerlendirmeyi mümkün kılan 21 fotoğraf ve 21 video klip sunulmuştur. Plevral çizgi değerlendirmesi, fizyolojik A-çizgileri, patolojik B-çizgileri, ışık huzmesi paterni, beyaz akciğer paterni ve hızlı tanıma ve değerlendirme için spesifik paternler tanımlanmıştır.

Sonuç: Akciğer ultrasonunun potansiyel avantajları ve sınırlamaları ve doğum uzmanları için kullanım alanları tartışılmıştır. Akciğer ultrasonu, SARS-CoV-2 salgını sırasında umut verici bir yardımcı görüntüleme aracıdır. Kısa didaktik kursun ardından obstetrisyenlerin elinde yapmak kolaydır ve uygulanabilir. Hamile kadınlar için ilk basamak görüntüleme yöntemi olabilir.

Anahtar Kelimeler: Akciğer ultrasonu, gebelik, SARS-COV-2, COVID-19

PRECIS: Lung ultrasound is feasible and relatively easy to perform for obstetricians to be used during the COVID-19 pandemic.

Address for Correspondence/Yazışma Adresi: Murat Yassa, MD,

University of Health Sciences Turkey, Şehit Prof. Dr. İlhan Varank Sancaktepe Training and Research Hospital, Clinic of Obstetrics and Gynecology, İstanbul, Turkey

Phone: +90 533 510 63 12 E-mail: murat.yassa@gmail.com ORCID ID: orcid.org/0000-0001-8661-1192

Received/Geliş Tarihi: 01.07.2020 Accepted/Kabul Tarihi: 04.08.2020

©Copyright 2020 by Turkish Society of Obstetrics and Gynecology

Turkish Journal of Obstetrics and Gynecology published by Galenos Publishing House.

Introduction

Chest computed tomography (CT) is the gold standard in the diagnosis of coronavirus diseases-2019 (COVID-19) pneumonia. The prominent features of COVID-19 are subpleural, ground-glass consolidative pulmonary opacities^(1,2). However, CT is relatively expensive, not feasible for monitoring and patients admitted to the intensive care unit, has an ionizing radiation nature and carries the risk of transmission during transportation⁽³⁾.

By contrast, lung ultrasound scanning (LUS) is easy to perform, has a non-ionizing nature, and has the advantages of bed-side application and thus is well suited for monitoring patients⁽²⁻⁵⁾. Its interpretation is accepted as relatively easy because it is mainly based on pattern recognition and provides real-time dynamic images^(5,6). LUS has been traditionally used by non-radiologists as an adjunctive imaging tool⁽⁴⁾. Pulmonologists, emergency medicine physicians, thoracic and cardiac surgeons often benefit from LUS in the management of traumatic conditions and intraoperative situations⁽⁷⁾. Obstetricians also use ultrasound liberally in their routine clinical practice. Practically, the examination of the maternal lungs immediately after obstetric sonographic evaluation could be feasible for obstetricians, basically to ascertain the presence or absence of normality and specific patterns, and thus to determine the need for further multidisciplinary management⁽⁴⁾.

The attenuation of sound waves by the lung and bone tissues limits the use of LUS in the diagnosis of central lung diseases; therefore, LUS mainly targets artifacts that originate from peripulmonary lesions to reach a diagnosis⁽⁸⁾. Changes in the lung parenchyma following COVID-19 pneumonia begin in the distal regions and progress proximally⁽³⁾. Lesions are mostly located in the posterior and inferior fields of both lungs⁽⁸⁾. This feature makes LUS non-inferior to CT in the pandemic setting compared with other respiratory disorders. The pathologic progression of pneumonia of COVID-19 provides credibility to a surface imaging modality such as LUS⁽³⁾. Herein, it was aimed

to provide a didactical, pictorial review to assist obstetricians in the multidisciplinary management of pregnant women suspected or diagnosed as having COVID-19 infection.

Materials and Methods

In this educational, non-systematic pictorial review, all lung images and videoclips were obtained with a dedicated machine [Esaote S.p.a., Italy; Manufactured by: Eizo Nanao Corp., Model: EA720] for use in pregnant women with suspicion or diagnosis of COVID-19. A 1-8-MHz convex transducer was used on the regular obstetric preset.

Fourteen areas (3 posterior, 2 lateral, and 2 anterior) were scanned per patient for at least 10 seconds along the indicated anatomical landmarks⁽⁹⁾. The scan was performed in supine, right-sided and left-sided positions, respectively (Figure 1). Where applicable, scanning from the intercostal space was preferred.

Each area was given a score between 0 and 3 according to the specific pattern⁽⁹⁾. The pattern with a continuous and regular pleural line and horizontal artifacts, referred to as A-lines, was classified as score 0. The pattern with an indented pleural line and sporadic vertical white areas below the point of discontinuity in the pleural line, referred to as sporadic B-lines, was classified as score 1. The pattern with a broken pleura, small consolidated areas below the discontinuity, and multiple vertical white areas that reached the bottom of the field of view, referred to as multiple B-lines, was classified as score 2. The pattern with a severely broken pleura and a dense and largely extended white lung pattern with or without larger consolidations was classified as score 3. At the end of the procedure, the highest score obtained for each area was noted (e.g. landmark 1, score 0; landmark 2, score 1; and so on)⁽⁵⁾.

Local Institutional Ethical Board and National Scientific Research Board approved the study. Written consent was obtained from all patients underwent lung ultrasound.



Figure 1. Lung ultrasound examination following a fetal assessment in supine and sided positions

Results

In this study, six figures and three videos for score 0 (Figure 2-7, Video 1-3), five figures and three videos for score 1 (Figure 8-12, Video 4-6), 5 figures and seven videos for score 2 (Figure 13-17, Video 7-13), four figures and four videos for score 3 (Figure 18-21, Video 14-17) were provided and explained in detail. In addition, four featured videos were added showing pleural effusion, the co-existence of scores 0 and 1, and perihepatic and pericardial effusions (Video 18-21). The clinical characteristics and outcomes of the patients were not in the scope of this study and were therefore not presented.

LUS Findings

The ribs and their posterior shadowing can be seen when the probe is positioned longitudinally. Transverse positioning of the probe on the intercostal spaces should be preferred, where applicable.

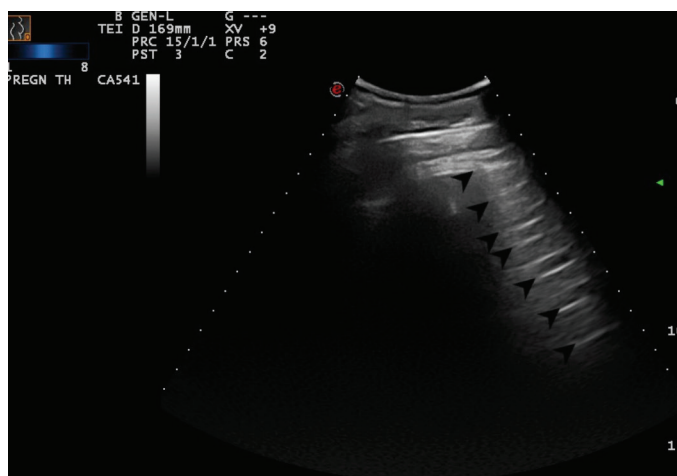


Figure 2. Regular pleural line. Arrows indicate physiological A-lines at regular intervals. Convex transducer positioned in the intercostal space (Scored 0)

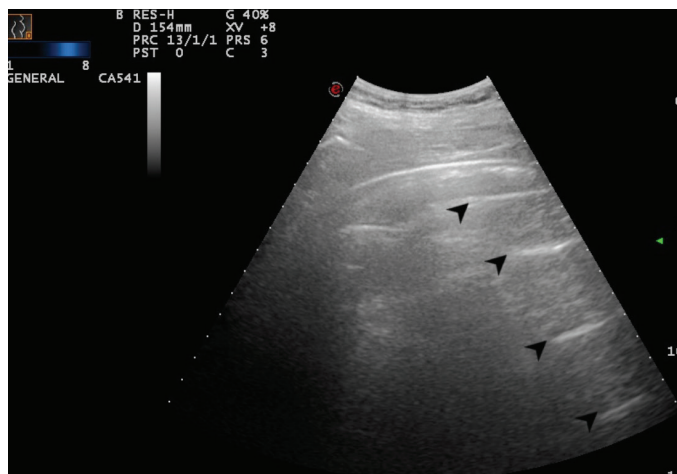


Figure 3. Regular pleural line. Arrows indicate physiologic A-lines at regular intervals (Scored 0)



Figure 4. Normal LUS pattern with the convex transducer positioned longitudinally. Arrows indicate physiologic A-lines at regular intervals (Scored 0)

LUS: Lung ultrasound scanning

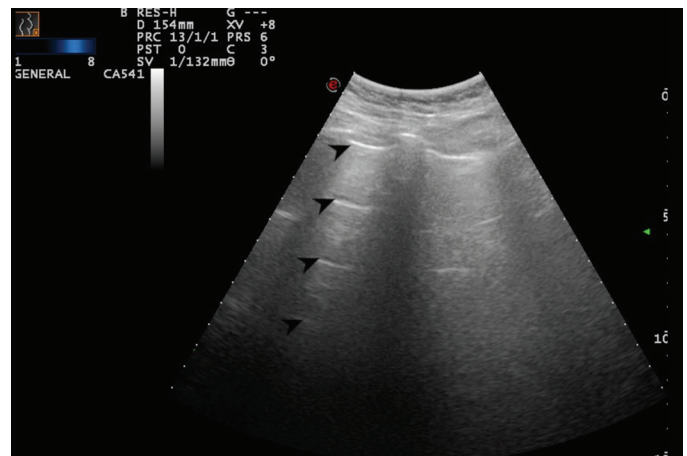


Figure 5. Normal LUS pattern with the convex transducer positioned longitudinally. Arrows indicate physiologic A-lines at regular intervals (Scored 0)

LUS: Lung ultrasound scanning



Figure 6. Regular pleural line. Arrows indicate physiologic A-lines at regular intervals (Scored 0)



Figure 7. Regular pleural line. Arrows indicate physiologic A-lines at regular intervals (Scored 0)

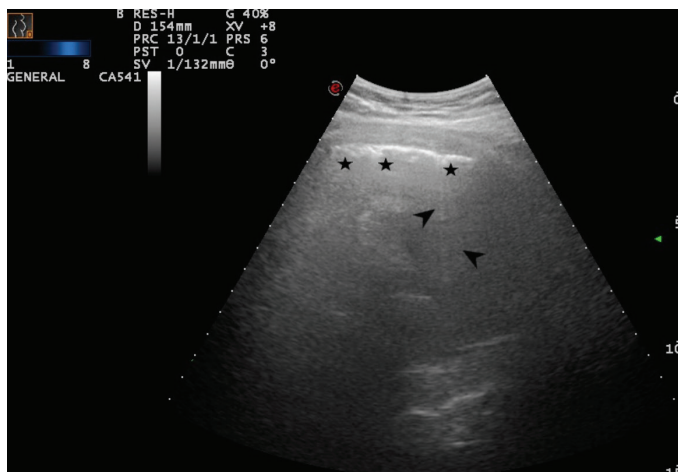


Figure 10. The arrow indicates a sporadic B-line arising from the intended pleural line. Stars indicate the thickened and intended pleural line (Scored 1)

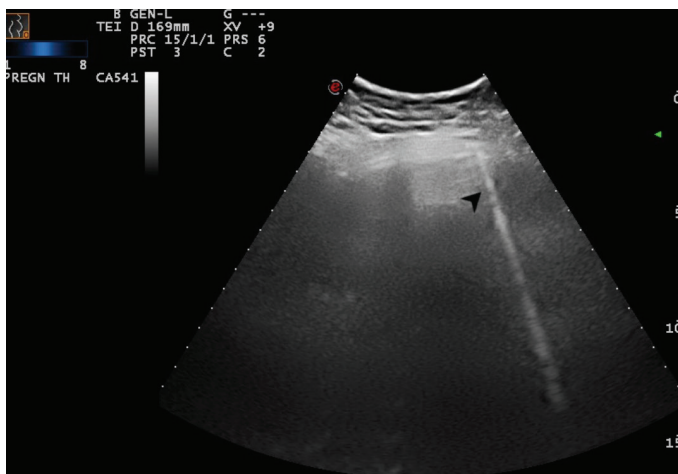


Figure 8. The arrow indicates a sporadic B-line arising from the intended pleural line (Scored 1)

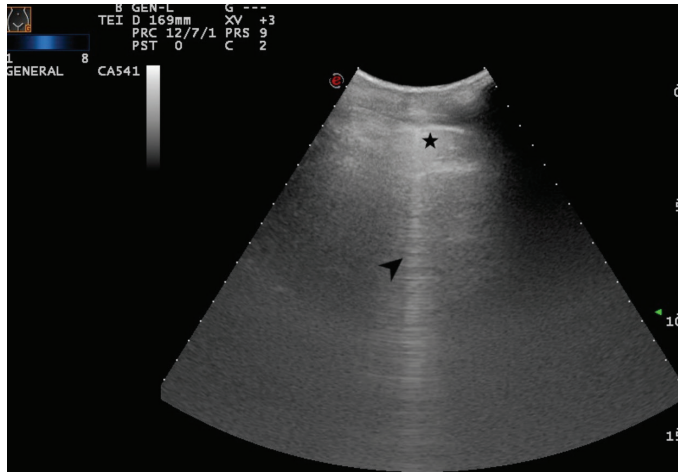


Figure 11. The arrow indicates a sporadic B-line arising from the intended pleural line. Star indicates the thickened and intended pleural line (Scored 1)

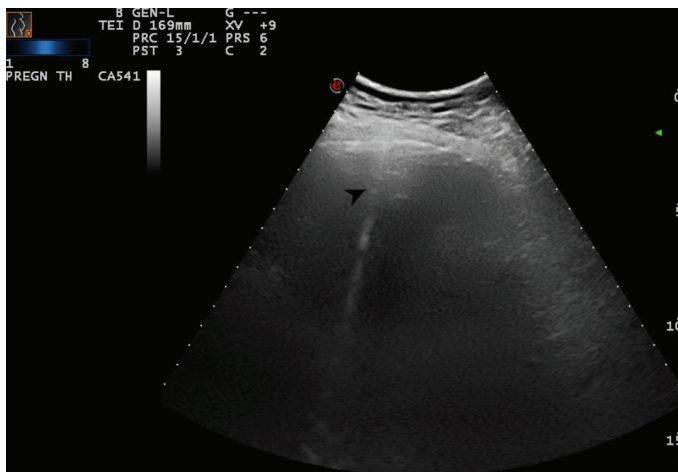


Figure 9. The arrow indicates a sporadic B-line arising from the intended pleural line (Scored 1)



Figure 12. The arrow indicates a sporadic B-line arising from the intended pleural line. Stars indicate the thickened and intended pleural line (Scored 1)

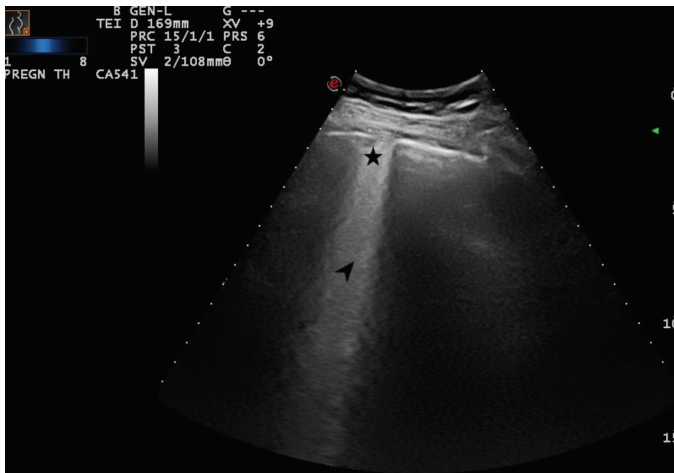


Figure 13. A broken pleural line and small consolidated area (indicated with star) below the irregularity and a large bright vertical area (indicated with arrow) can be seen (Scored 2)

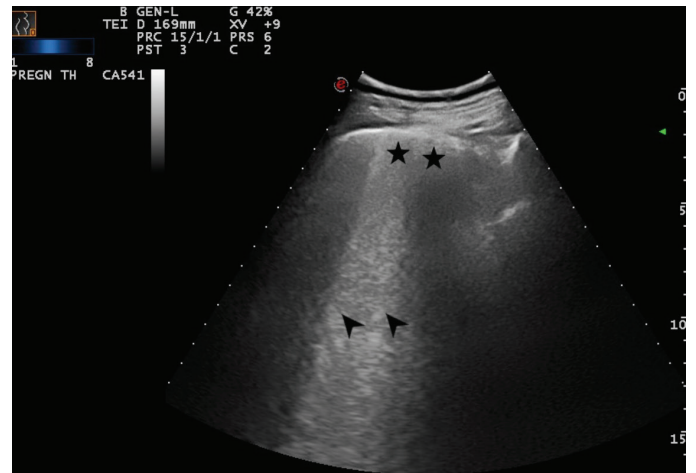


Figure 16. Arrows indicate multiple B-lines and stars indicate a broken and thickened pleural line (Scored 2)

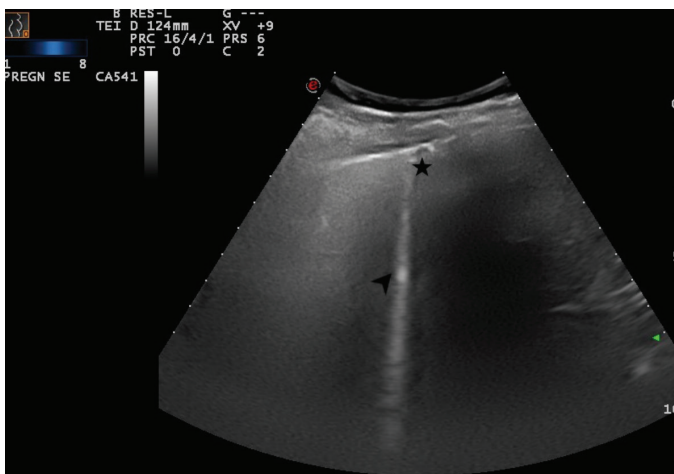


Figure 14. Star indicates a subpleural consolidation area and arrow indicate a B-line that reaches the bottom of the screen (Scored 2)

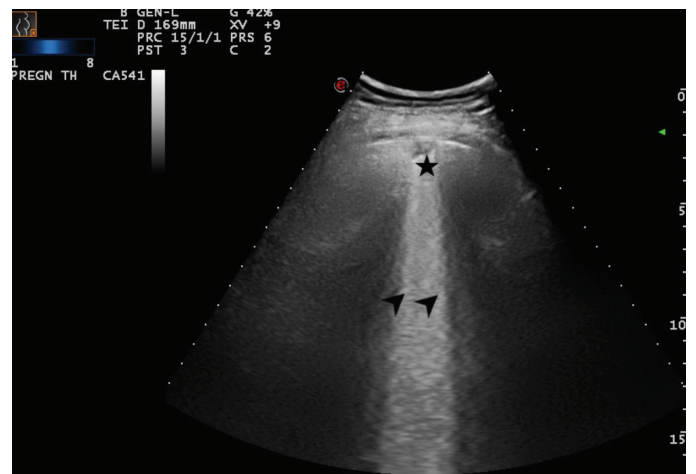


Figure 17. Arrows indicate multiple B-lines and star indicates a sub-pleural effusion and broken pleural line (Scored 2)

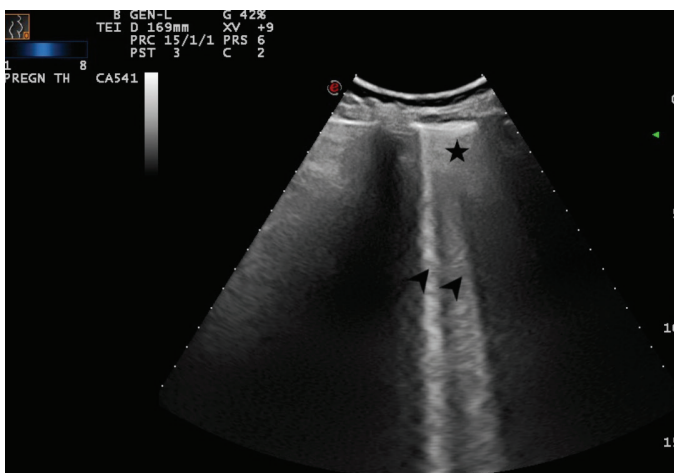


Figure 15. Arrows indicate multiple B-lines and the star indicates a broken and thickened pleural line (Scored 2)

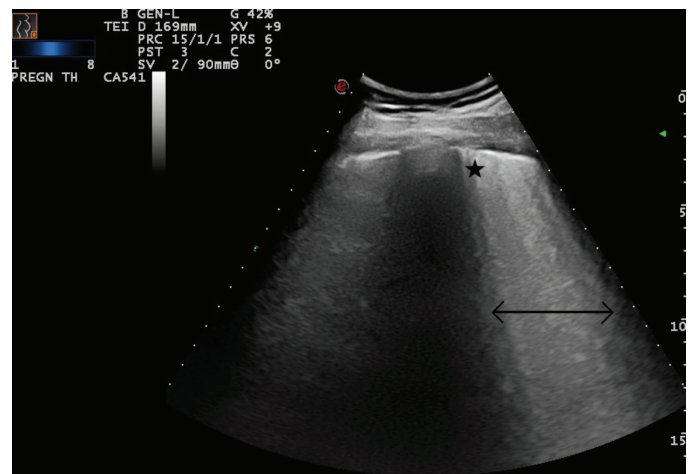


Figure 18. Double-headed arrow indicates a largely extended white lung pattern with small subpleural consolidation area as indicated with a star (Scored 3)

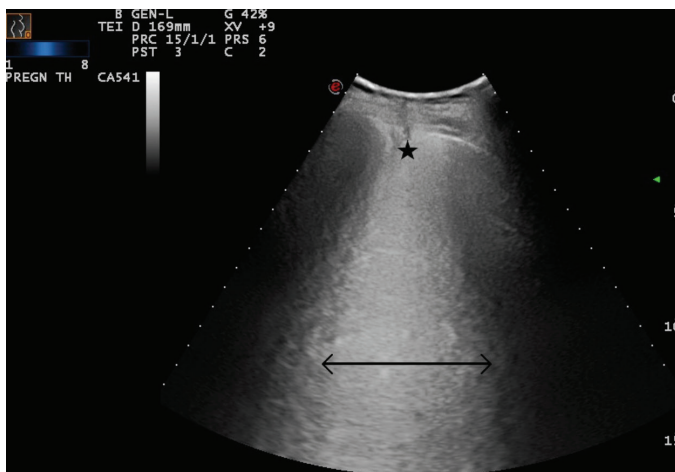


Figure 19. Double-headed arrow indicates a largely extended white lung pattern. The star indicates a severely broken pleural line and a small subpleural consolidation area (Scored 3)

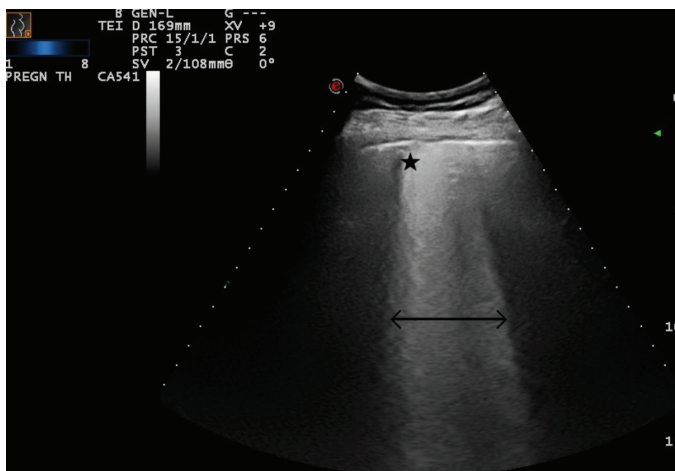


Figure 20. Double-headed arrow indicates a largely extended white lung pattern. The star indicates a severely broken pleural line and a small subpleural consolidation area (Scored 3)

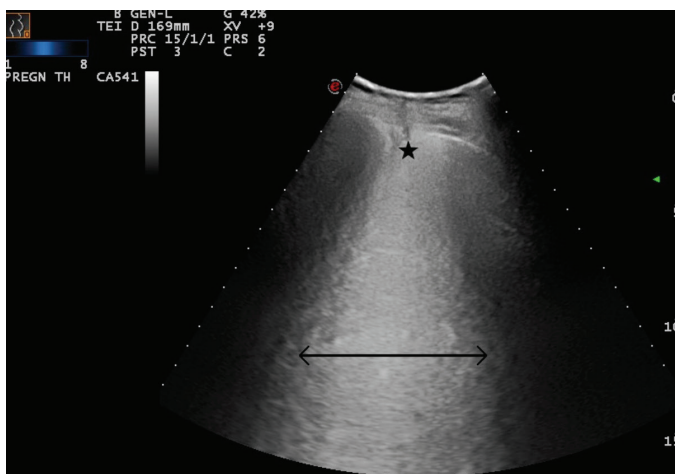


Figure 21. Double-headed arrow indicates a largely extended white lung pattern. The star indicates a severely broken pleural line and a small subpleural consolidation area (Scored 3)

Pleural line assessment: Attention should be paid to the sliding, thickness, and irregularities (e.g. unsmooth, discontinuous or interrupted, indentation, broken pleura) of pleural line and subpleural effusion, if they exist.

The visceral and parietal parts of pleura slide over each other in backward and forward directions with respiratory movements called the normal sliding sign⁽¹⁰⁾. The sliding sign is absent in some clinical conditions such as pneumothorax.

The subpleural consolidations appear as an irregular hypoechoic area. Small patchy, strip or nodule consolidations can often be observed as a subpleural lesion.

In the COVID-19 infection, pleural thickening and subpleural effusion were found to be about 1-2 mm and 2-3 mm, respectively, which can change as the disease progresses⁽⁸⁾.

A-lines: These represent repetitive reverberation artifacts and commonly appear as horizontal, parallel lines at regular intervals⁽⁷⁾. These lines represent a normal inflated peripheral lung when combined with a normal pleural sliding sign⁽⁴⁾.

B-lines: These lines are well-defined vertical hyperechoic artifacts arising from the pleural line and reach the bottom of the screen⁽⁴⁾. These lines move with the pleural line during respiration and may erase A-lines⁽⁷⁾. Sporadic/coalescent or multiple B-lines can be seen and the density and combination of the pathologic signs may be correlated with the probability of disease⁽¹¹⁾.

Sometimes, fewer than three B-lines between two adjacent ribs may be seen in 30% of normal lungs^(7,10). However, possible false-positive cases should also be approached with great caution in the pandemic settings and should be considered as a possible pathologic condition until proven otherwise.

There are also false vertical lines including C-, E- and Z-lines, which can commonly be mistaken for B-lines. However, for obstetricians working in the COVID-19 pandemic setting, discriminating those from pathologic B-lines may not be clinically relevant because they refer to specialist's (such as radiologist and pulmonologist) considerations to differentiate from underlying diseases. In addition, they are mainly differentiated with B-lines concerning their synchronous movements with inspiration and expiration. Basically, an obstetrician should pay attention to the synchronized vertical lines that move with respiration.

Light beam pattern: A specific pattern that consists of a shining band-form artifact spreading down from a large portion of a regular pleural line and often has an on-off effect with respiration that may also have normal A-lines visible in the background⁽¹¹⁾. This pattern was proposed to reflect the acute phase of ground-glass opacities during the early spread of the active COVID-19 pneumonia⁽¹¹⁾.

White lung pattern: This pattern corresponds to the increased density of the lung parenchyma in which physiologic A-lines and other vertical artifacts including B-lines are erased⁽⁴⁾.

Pleural effusions and air bronchograms, which are the reflection of air-filled bronchus in the context of opacity

are rarely seen in COVID-19 infections and should lead physicians to superinfections or other differential diagnoses⁽¹²⁾.

Discussion

Obstetricians should be responsive during the Severe Acute Respiratory syndrome coronavirus-2 pandemic because they are the frontline physicians for the pregnant population⁽¹³⁾ and should be ready for the second wave or the next epidemics or pandemics caused by other viruses. The use of LUS for pregnant women in the hands of obstetricians can make a difference during such exceptional and critical situations⁽¹⁴⁾. This pictorial study can be used for the training of obstetricians in the pandemic setting and encourage the liberal use of LUS.

LUS cannot be a substitute for chest CT; however, it has certain advantages over CT as an adjunctive method in the diagnosis and management of respiratory involvement of COVID-19 infection, particularly for pregnant women^(4,5,8). The sensitivity and specificity of LUS in several clinical conditions range between 81% and 97%, and between 95% and 100%, respectively^(7,15). Authors postulate that LUS should be the first choice of imaging method in pregnant women suspected of having COVID-19 infection. However, LUS findings should be evaluated with the patient's background because they are not always specifically attributable. More importantly, mild LUS findings (score 1) in an asymptomatic woman should be approached cautiously. For example, A-lines that are known as physiologic artifacts can represent abnormal signs in atelectasis, asthma, chronic obstructive pulmonary disease, and pneumothorax⁽¹⁶⁾. Similarly, B-lines can represent normal signs in healthy patients when they are fewer than three and do not reach the bottom of the screen⁽¹⁶⁾.

We have previously shared our clinical experience in eight cases showing that the use of LUS immediately after the fetal assessment can positively affect the clinical management of pregnant women infected with COVID-19⁽⁵⁾. As physicians without formal radiology residency training, we organized a brief course that consisted of a didactic lecture and hands-on ultrasound examinations supervised by experts⁽¹⁷⁾. This approach has been previously tested and found that LUS is feasible following theoretical training combined with still images taken from pregnant women infected with COVID-19^(6,18). The interobserver agreement between obstetricians with different levels of experience on still-images and videoclips of LUS was found as good⁽¹⁷⁾.

Conclusion

LUS is a promising non-invasive, safe, and easily learned and performed imaging tool that can be used in pregnant women suspected of having COVID-19 pneumonia following an initial fetal assessment. This technical pictorial study can encourage the reasonable learning of LUS for obstetricians in the pandemic setting.

Acknowledgements: The authors thank Taha Yusuf Kuzan MD (Radiologist) for his valuable contributions in the interpretation of the images.

Ethics

Ethics Committee Approval: Local Institutional Ethical Board and National Scientific Research Board approved the study.

Informed Consent: Written consent was obtained from all patients underwent lung ultrasound.

Peer-review: Internally peer-reviewed.

Authorship Contributions

Surgical and Medical Practices: M.Y., M.A.M., P.B., C.Y., Concept: M.Y., E.K., N.T., Design: M.Y., A.B.T., K.S., C.K., M.Y., Data Collection or Processing: M.A.M., P.B., C.Y., E.A., Analysis or Interpretation: M.Y., E.K., M.Y.; Literature Search: M.A.M., A.B.T., K.S., E.A., M.Y., C.K., Writing: M.Y., M.A.M., N.T.

Conflict of Interest: The authors report no conflict of interest.

Financial Disclosure: The authors have no financial interests about the research.

References

- Bernheim A, Mei X, Huang M, Yang Y, Fayad ZA, Zhang N, et al. Chest CT findings in coronavirus disease-19 (COVID-19): relationship to duration of infection. *Radiology* 2020;200463.
- Inchingolo R, Smargiassi A, Moro F, Buonsenso D, Salvi S, Del Giacomo P, et al. The Diagnosis of Pneumonia in a Pregnant Woman with coronavirus disease 2019 Using Maternal Lung Ultrasound. *Am J Obstet Gynecol* 2020;223:9-11.
- Smith MJ, Hayward SA, Innes SM, Miller ASC. Point-of-care lung ultrasound in patients with COVID-19—a narrative review. *Anaesthesia* 2020;75:1096-104.
- Moro F, Buonsenso D, Moruzzi MC, Inchingolo R, Smargiassi A, Demi L, et al. How to perform lung ultrasound in pregnant women with suspected COVID-19. *Ultrasound Obstet Gynecol* 2020;55:593-8.
- Yassa M, Birol P, Mutlu AM, Tekin AB, Sandal K, Tug N. Lung Ultrasound Can Influence the Clinical Treatment of Pregnant Women With COVID-19. *J Ultrasound Med*.
- Buonsenso D, Moro F, Inchingolo R, Smargiassi A, Demi L, Soldati G, et al. Effectiveness of a fast lung ultrasound teaching program for gynecologists/obstetricians dealing with pregnant women with suspicion of COVID-19 infection. *Ultrasound Obstet Gynecol* doi: 10.1002/uog.22066 [Epub ahead of print]
- Francisco Neto MJ, Rahal Junior A, Vieira FAC, Silva PSDd, Funari MBdG. Advances in lung ultrasound. *Einstein (Sao Paulo)* 2016;14:443-8.
- Huang Y, Wang S, Liu Y, Zhang Y, Zheng C, Zheng Y, et al. A preliminary study on the ultrasonic manifestations of peripulmonary lesions of non-critical novel coronavirus pneumonia (COVID-19). SSRN doi: 10.2139/ssrn.3544750
- Soldati G, Smargiassi A, Inchingolo R, Buonsenso D, Perrone T, Briganti DF, et al. Proposal for International Standardization of the Use of Lung Ultrasound for Patients With COVID-19: A Simple, Quantitative, Reproducible Method. *J Ultrasound Med* 2020;39:1413-9.
- Miller A. Practical approach to lung ultrasound. *Bja Educ* 2016;16:39-45.

11. Volpicelli G, Gargani L. Sonographic signs and patterns of COVID-19 pneumonia. *Ultrasound J* doi: 10.1186/s13089-020-00171-w
12. Pata D, Valentini P, De Rose C, De Santis R, Morello R, Buonsenso D. Chest Computed Tomography and Lung Ultrasound Findings in COVID-19 Pneumonia: A Pocket Review for Non-radiologists. *Front Med* 2020;7:375.
13. Yassa M, Birol P, Yirmibes C, Usta C, Haydar A, Yassa A, et al. Near-term pregnant women's attitude towards, concern about and knowledge of the COVID-19 Pandemic. *The Journal of Maternal-Fetal & Neonatal Medicine* 2020.
14. Kalafat E, Yaprak E, Cinar G, Varli B, Ozisik S, Uzun C, et al. Lung ultrasound and computed tomographic findings in pregnant woman with COVID-19. *Ultrasound Obstet Gynecol* 2020;55:835-7.
15. Wongwaisayawan S, Suwannanon R, Sawatmongkornkul S, Kaewlai R. Emergency thoracic US: the essentials. *Radiographics* 2016;36:640-59.
16. Di Serafino M, Notaro M, Rea G, Iacobellis F, Paoli VD, Acampora C, et al. The lung ultrasound: facts or artifacts? In the era of COVID-19 outbreak. *Radio Med* 2020;125:738-53.
17. Yassa M, Mutlu MA, Birol P, Kuzan TY, Kalafat E, Usta C, et al. Lung ultrasound in pregnant women during the COVID-19 pandemic: an interobserver agreement study among obstetricians. *Ultrasonography* doi: 10.14366/usg.20084
18. Yassa M, Yirmibes C, Cavusoglu G, Eksi H, Dogu C, Usta C, et al. Outcomes of universal SARS-CoV-2 testing program in pregnant women admitted to hospital and the adjuvant role of lung ultrasound in screening: a prospective cohort study. *The Journal of Maternal-Fetal & Neonatal Medicine* 2020;0.