
UTILIZATION OF KEY LOGGER IN SECURITY ASPECT BASED ON SPYWARE FOR MONITORING LAPTOP USING REFOG KEY LOGGER

Chairul Imam¹, Muhammad Furqon Siregar²

¹Prodi Teknologi Informasi, Universitas Battuta, Jl. Gajah Mada, No. 15 M, Medan

²Prodi Informatika, Universitas Battuta, Jl. Gajah Mada, No. 15 M, Medan
chairulimam313@gmail.com

Article Info

Received : 16 September 2021

Revised : 29 October 2021

Accepted : 04 November 2021

Data security in accessing computers and laptops is one form that must be considered both physically and non-physically because Spyware is a program that is able to spy on the activities of computer users and data recording techniques by recording typing or events carried out by a laptop called a keylogger. can also be one of the data security techniques that the user does on the laptop to prevent someone from stealing data on the laptop by using a refof keylogger

Keywords: OSI Layer, Interactive Education Media

1. Introduction

Data security in accessing computers and laptops is one form that must be considered both physically and non-physically. Given that from time to time, computer ownership is increasing every year, more or less will affect the number of users who interact with the internet. Various kinds of content on the internet, for example, not all content contains educational or knowledge related things that can be used as learning insights, but there is also content containing negative information that should not be accessed by a child and teenager. Therefore, as a result of the increasing variety of information in the lives of children and adolescents, special attention is needed from parents and teachers. One solution is to use Spyware, a program that is able to spy on the activities of computer users and data recording techniques by recording typing. or an incident carried out by a laptop called a keylogger. Spyware can also be one of the data security techniques that a user does on a laptop to prevent someone from stealing data on a laptop by using a keylogger refof. From the problems above, we need a way that is able to monitor user activity when accessing the computer. With the use of a key logger in the spyware-based security aspect to monitor laptops using a refof key logger, monitoring the activities of laptop users and internet access will not be missed.

2. Method

System planning System design is the stage after the content analysis of the system development clause, defining functional requirements and preparation for system design. Below is :

a. Agree on the Problem Statement

Agree on a problem statement. This problem statement is interpreted as “effect”, or visually in fishbone as “fish head”.

b. Identifying Categories

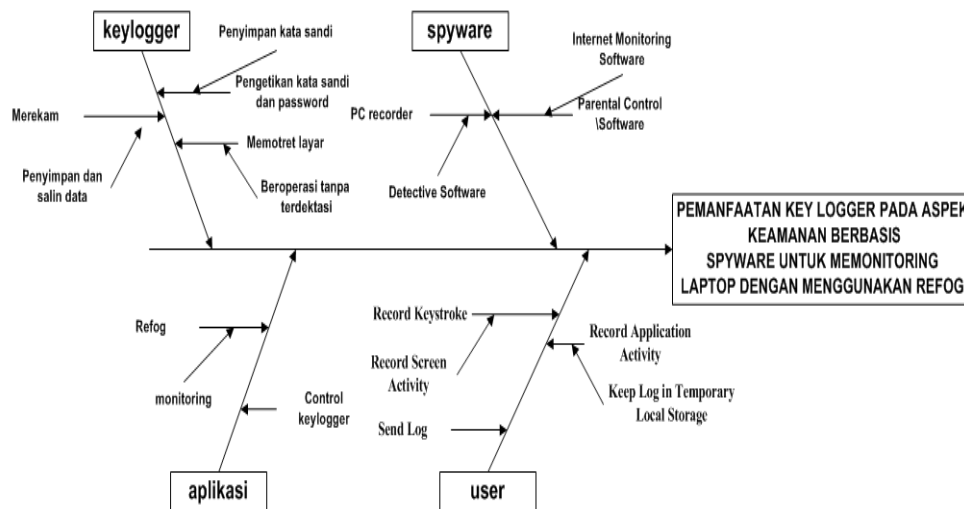
From the main horizontal line, draw a diagonal line that becomes the “branch”. Each branch represents the “main cause” of the problem being written about. This cause is interpreted as “cause”, or visually in fishbone like “fishbone”.

c. Finding Potential Causes By Brainstorming

When the causes are presented, determine together where they should be placed in the fishbone diagram, i.e. determine under which category the idea should be placed, for example: “Why potential hazard? Cause: Employees did not follow procedures!” Because the cause is an employee (human), it is placed under "Man"

d. Studying and agreeing on the most probable causes

After each category is filled in, look for the most probable cause among all the causes and their sub-sub



Fish Picture 1 Fish Bone Diagram “Utilization Of Key Logger In Security Aspects Based On Spyware For Monitoring Laptops Using Refog Key Logger”

2.1 Spyware

Data mining is a process that employs one or more computer learning techniques (machine learning) to automatically analyze and extract knowledge. Other definitions include induction-based learning (induction-based learning) is the process of forming general concept definitions carried out by observing specific examples of concepts to be learned. Knowledge Discovery in Databases (KDD) is the application of scientific methods to data mining. In this context data mining is one step in the KDD process. Data mining is defined as a process of finding meaningful relationships, patterns, and new trends by filtering

2.2 Literature Review

The five literatures help in the discussion that the researcher wants to make and want to discuss the explanation below, namely: 1. Research conducted by Mulki Indana Zulfa from Electrical Engineering, Faculty of Engineering, University of 17 August 1945 Cirebon, Indonesia (2015) entitled Utilization of Client-Server-Based Spyware for Monitoring Keyboard Activity. This study uses a Keylogger to determine whether the spy agent can be successful or not in logging the keyboard from the

client-server. 2. Research conducted by Ruchi Jain and Dr. Mohd Amjad from the Department of Computer Science Engineering/Information Technology Al Falah School of Engineering and Technology, Jamia Millia Islamia New Dehli (2014) entitled Computer Surveillance Systeml. This research contains about computer monitoring and utilization of Computer Surveillance System for users. 3. Research conducted by Azwar Anas, Anjik Sumaaji, S.Kom., M.Eng, and Teguh Sutanto, M.Kom., MCP (2012) from Information Systems STIKOM Surabaya, Indonesia entitled Design of Computer Activity Surveillance Applications Using Cloud To Device Messaging (C2DM) Service on Android Smartphonel. This research provides about the use of Keylogger on cellphone users to find out what users (children) do. 4. Research conducted by Preeti Tuli and Priyanka Sahu from the Department of Computer Science Dimat, CSVTU, Raipur, Chhattisgarh, India (2013) entitled System Monitoring and Security Using Keyloggerl. This study uses a Keylogging program which aims to determine the benefits obtained from monitoring the network system of a company that is used by employees. 5. Research conducted by Tri Wahyu W, Aidil Sanjaya from Informatics Engineering, Faculty of Information Communication Technology, National University, Indonesia (2008). This research is about the importance of security in dealing with software that can invade the user's PC. Of the five literatures help in the discussion that researchers want to discuss and want to provide an explanation. One of the literature above there is a study that is similar to research conducted by researchers. The title of the research is the Design of Computer Activity Surveillance Applications Using Cloud To Device Messaging (C2DM) Services on Android Smartphones, with the research of researchers namely the UTILIZATION OF KEY LOGGER IN SECURITY ASPECTS BASED ON SPYWARE FOR MONITORING LAPTOPS USING REFOG KEY LOGGER The comparison includes uses in utilization, the target of the program that has been made and also the technology used.

3. Result and discussion

3.1 Implementation and System Testing

Implementation is an action or implementation of a plan that has been prepared carefully and in detail. Implementation is usually carried out after the planning is considered complete. This implementation The decision support system consists of the following requirements :

a. Hardware Requirements

In order for a system to run as desired, it cannot be separated between hardware and software as well as the specifications needed in designing the system

1. Processor core I3
2. Minimum Hard Disk 500 GB
3. 3GB RAM
4. Monitor
5. Keyboard
6. Mouse

b. Software Requirements In order for this system to run smoothly, it is inseparable from the presence of software that clearly supports the above hardware, along with the software needed to run the system

1. Windows 7,8 and 10 Operating Systems
2. Refog Keylogger Application

c. System Test

1. How to Install Refog Keylogger



After we run the refog setup, in the personal monitor refog section "this will install refog personal monitor on your computer. It is recommended that you close all other application before continuing, I'm going to use this softwre to monitor, here we want you to use refog to spy on anyone, your child, your computer worker or yourself just choose My Kid's Computer if for workers choose Employee Computer.

2. Read License Agreement Refog



After that we will be displayed on the license agreement page, here just click I Agree

Select Recording Refog



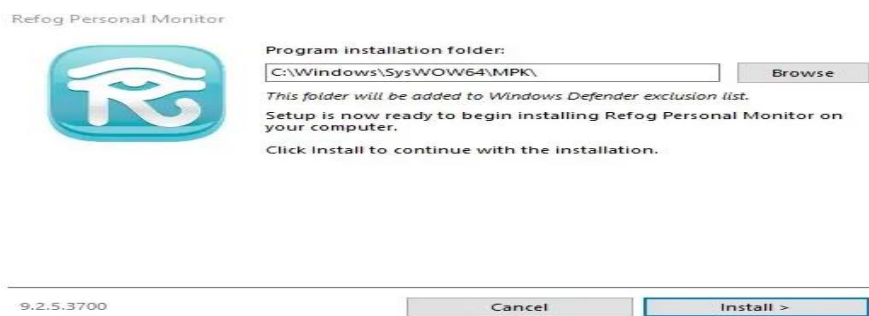
In the menu section Please select the record you want to intercept , you select select all then click next

3. Login Refog



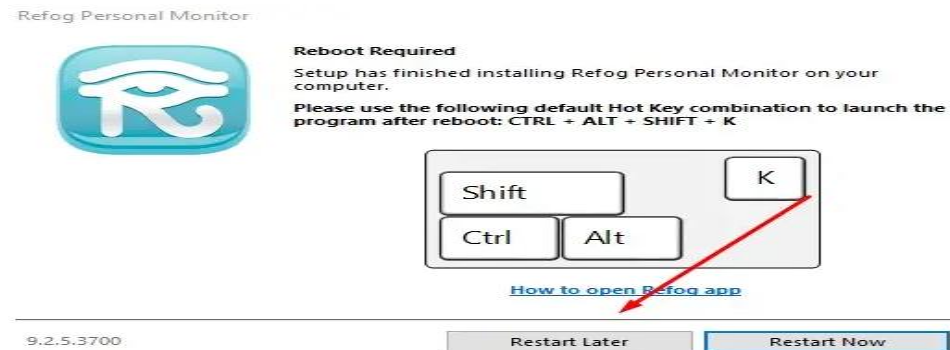
In the menu section Activate this option to start sending logs from this computer to your online dashboard, enter your email and password for your refoG account then click Activate, after that a notification will appear, just click ok.

4. Specify Refog Installation Folder Refog Installation Folder



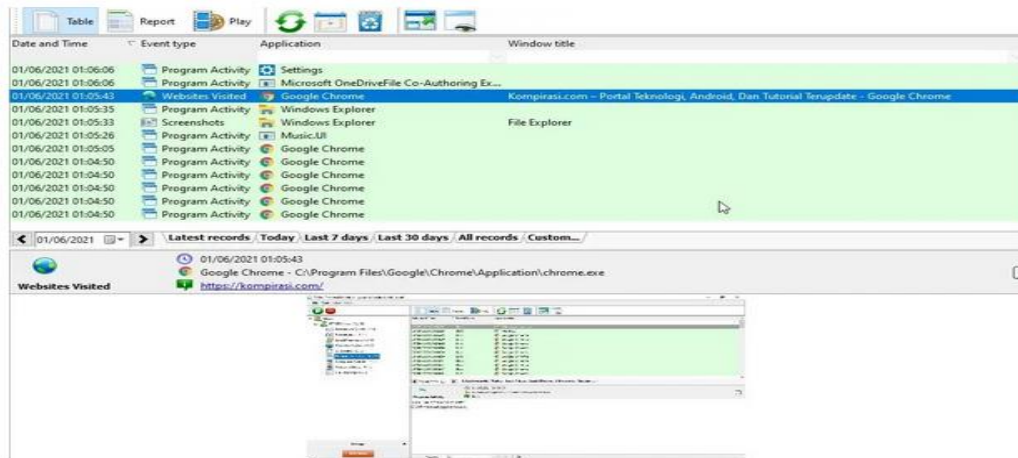
In this section you are asked to put the relog application installation folder, leave it the default then click install and wait until the relog installation process is complete.

5. Reboot



After the relog keylogger installation is complete, you are asked to reboot the computer, just click Restart now, to reboot the computer automatically, if you don't want to reboot the computer select restart later, oh yes to open the relog program you can press CTRL + ALT + Shift + K

6. Finally, we just have to test it, you type it and open any browser, to test whether the relog keylogger is running smoothly, if it works, all your typing activities will be recorded



3. Conclusions

Based on the research results, it can be concluded that With the use of a keylogger, the process of monitoring laptop use activities can be carried out routinely with a minimum of checking laptops without checking one computer at a time. The role of the admin to monitor computer usage activities by users is not difficult Using a keylogger as a spyware program that doesn't require a lot of resources

Reference

- [1] Anas Azwar, Anjik Sukmaaji, S.Kom.,M.Eng, Teguh Sutanto, M.Kom.,MC (2012). Rancang Bangun Aplikasi Pengintai Aktifitas Komputer Menggunakan LayananCloud To Deice
- [2] Messaging (C2DM) Pada Smartphone Androidll. STIKOM Surabaya, Surabaya, Indonesia. Wardana, Ari(2006). PemrogramanVirus dan Spywarell. Jasakom,Jakarta. Fowler, Martin

- (2004). UML Distilled Edisi 3 Panduan Singkat Bahasa Pemodelan Objek Standar. ANDI: Yogyakarta, Indonesia
- [3] Huang, Wei (2010). Android Cloud To Device Messaging. Mengambil sumber dari :<http://androiddevelopers.blogspot.com/2010/05/android-cloud-to-device-messaging.html> diakses 04-05-2011 pukul
- [4] Kurniawati, Dewi (2010). Kegunaan Keylogger, Jurnal Teknologi Informasi. Indonesia
- [5] Muhammad Syahputra Novelan, “Sistem Monitoring Kualitas Udara Dalam Ruangan Menggunakan Mikrokontroler dan Aplikasi Android”, Jurnal Nasional Informatika dan Teknologi Jaringan, ISSN 2540-7597 | ISSN (Online) 2540-7600., Vol. 4 No. 2, pp. 50-54, 2020
- [6] Mulki Indana Zulfa (2015). —PEMANFAATAN SPYWARE BERBASIS CLIENT-SERVER UNTUK MONITORING AKTIVITAS KEYBOARD. Cirebon, Jawa Barat
- [7] Novelan, M. S. (2020). Application of Attendance Monitoring System Using RFID (Radio Frequency Identification) and Interface. Jurnal Mantik, 1837-1842
- [8] Novelan, M. S., & Amin, M. (2020). Monitoring System for Temperature and Humidity Measurements with DHT11 Sensor Using NodeMCU. International Journal of Innovative Science and Research Technology, 5(10), 123–128
- [9] Preeti Tuli dan Priyanka Sahu (2013). System Monitoring and Security Using Keylogger. Department Of Computer Science Dimat, CSVTU, Raipur, Chhattisgarh, India
- [10] Ruchi Jain dan Dr. Mohd Amjad (2014). Computer Surveillance System. Al Falah School of Engineering and Technology
- [11] Ramadah, Kartika (2012). Pengenalan Webservers, Universitas Gunadarma, Indonesia
- [12] Wahyu Tri W, dan Aidil Sanjaya (Juli 2008). —STUDI SISTEM KEAMANAN KOMPUTER. Universitas Nasional, Jakarta, Indonesia
- [13] Chairul Imam, et al (2021). Implementation of OSI Layer Based on Interactive Education Media.