

University of Warwick institutional repository: <http://go.warwick.ac.uk/wrap>

This paper is made available online in accordance with publisher policies. Please scroll down to view the document itself. Please refer to the repository record for this item and our policy information available from the repository home page for further information.

To see the final version of this paper please visit the publisher's website. Access to the published version may require a subscription.

Author(s): Susan J. Morris and Keith N. Leppard

Article Title: Adenovirus Serotype 5 L4-22K and L4-33K Proteins Have Distinct Functions in Regulating Late Gene Expression

Year of publication: 2009

Link to published version: <http://dx.doi.org/10.1128/JVI.02455-08>

Publisher statement: none

1 Title : Adenovirus serotype 5 L4-22K and L4-33K proteins have distinct functions in regulating late  
2 gene expression

3

4 Susan J. Morris and Keith N. Leppard\*

5

6 Department of Biological Sciences, University of Warwick, Coventry, CV4 7AL, U.K.

7

8

9 \* Author for correspondence: Keith N. Leppard

10 Phone: +44 24 7652 3579

11 Fax: +44 24 7652 3701

12 E-mail: [Keith.Leppard@warwick.ac.uk](mailto:Keith.Leppard@warwick.ac.uk)

13

14 Short running title: adenovirus L4 22K upregulates late genes

15 Abstract word count: 243

16 Main text word count: 6601

17 Number of figures and tables: 7

18

19 Key words: adenovirus, L4 proteins, late gene expression, early-late switch

20 **Abstract**

21 Adenoviruses express up to 20 distinct mRNAs from five major late transcription unit (MLTU)  
22 regions L1-L5 by differential splicing and polyadenylation of the primary transcript. MLTU  
23 expression is regulated at transcriptional and post-transcriptional levels. L4-33K protein acts as a  
24 splicing factor to upregulate several MLTU splice acceptor sites as the late phase progresses. The L4  
25 region also expresses a 22K protein that is sequence-related to L4-33K. L4-22K is shown here also  
26 to have an important role in regulating the pattern of MLTU gene expression. An adenovirus genome  
27 containing a stop codon in the L4-22K ORF expressed low levels of both structural and non-  
28 structural late proteins compared to a wt genome; a decrease in intermediate proteins, IVa2 and IX,  
29 was also observed. However, early protein synthesis and replication were unaffected by the absence  
30 of L4-22K. Intermediate and late protein expression was restored to wt levels by L4-22K expressed  
31 *in trans* but not by L4-33K. Increased MLTU promoter activity, resulting from stabilisation of the  
32 transcriptional activator IVa2 by L4-22K, made a small contribution to this restoration of late gene  
33 expression. However, the principal effect of L4-22K was on the processing of MLTU RNA into  
34 specific cytoplasmic mRNA. L4-22K selectively increased expression of penton mRNA and protein  
35 whereas splicing to create penton mRNA is known not to be increased by L4-33K. These results  
36 indicate that L4-22K plays a key role in the early-late switch in MLTU expression, additional to and  
37 distinct from the role of L4-33K.

## 38 **Introduction**

39 Human adenovirus serotype 5 (Ad5) is considered as a candidate delivery vector for gene  
40 therapy and vaccination. However, despite already achieving use in a clinical setting, some key  
41 questions about the basic biology of Ad5 remain. One of these unsolved questions is how control is  
42 achieved of late protein expression from the major late promoter (MLP), which directs the  
43 production of an array of structural proteins from the major late transcription unit (MLTU) regions  
44 L1 – L5 via differential splicing and polyadenylation of the primary transcript (Fig. 1A, reviewed in  
45 (1)). Understanding late gene expression is important for further Ad vector development since Ad  
46 E1A<sup>-</sup> vectors that retain late genes show poor persistence of transgene expression due to immune  
47 responses to residual late gene expression products (27, 41-44).

48 Full expression from the Ad5 MLTU is the end result of a temporal pattern of regulated gene  
49 expression that has several phases (reviewed in (35)). The earliest event is expression of the E1A  
50 transcriptional activator proteins. These then upregulate transcription of the other early viral genes  
51 E1B, E2, E3 and E4. Despite its name, the MLP is active at a low level during this early phase,  
52 producing the abundant i-leader protein and L1-52/55K (38). Accumulation of E2A-DNA binding  
53 protein (DBP) and E2B- precursor terminal protein (pTP) & DNA polymerase (Pol) allows viral  
54 DNA replication to begin. Around the onset of DNA replication, MLTU expression expands to  
55 include L4 proteins (22). The intermediate gene products, IVa2 and IX are also expressed at this time.  
56 IVa2 expression is regulated by a cellular repressor that is titrated out upon genome replication (19).  
57 IX and IVa2 are involved in upregulating transcriptional activity of the MLP during the early to late  
58 phase transition of MLTU expression (25, 26, 32, 40). However, it is only as viral DNA replication  
59 progresses that the MLP is activated to produce maximal expression of the late structural genes from  
60 all of MLTU regions.

61           The temporal pattern of MLTU expression involves regulation at both the transcriptional and  
62 post-transcriptional levels. Early in infection, transcription does not proceed beyond the L3  
63 polyadenylation site, and the L1 polyadenylation site is preferentially used leading to the  
64 accumulation of L1-52/55K protein (30). After the initiation of viral DNA replication, MLP activity  
65 increases and transcription extends through L4 and L5 regions, allowing a full complement of  
66 structural proteins to be produced. Alongside these transcriptional changes, RNA processing is  
67 regulated to give altered patterns of mRNA. For example, in the L1 region the proximal 52/55K  
68 splice acceptor site is used almost exclusively at early times but during the late phase usage shifts to  
69 the distal IIIa acceptor site, due to the production of an infection-specific splicing factor (1). This has  
70 now been shown to be L4-33K (39).

71           L4 is now also known to encode a 22 kDa protein (L4-22K) (31), as predicted from  
72 bioinformatic analysis (11), that shares its N-terminus with L4-33K but has a unique C-terminal  
73 domain (Fig. 1B). L4-22K has a role in genome packaging via its binding, in association with IVa2,  
74 to the A2 sequence within the packaging signal (31, 45, 46). L4-22K has also been shown to bind,  
75 with IVa2, to the downstream elements (DE1, DE2) of the MLP (31), which have been shown  
76 previously to bind IVa2 as both a homodimer (DEF-B) (25, 40) and in complex (DEF-A) with an  
77 unidentified viral protein (25, 28) suggesting that L4-22K, in conjunction with IVa2, may play a role  
78 in activating the MLP (31). However, DEF-A has also been shown to contain L4-33K, and IVa2 plus  
79 L4-33K activated a MLP reporter (2). Thus it is uncertain what the relative contributions of these  
80 two L4 proteins are to regulation of the MLP. The sequence-relatedness between L4-22K and L4-  
81 33K also raises the possibility that they might have overlapping functions. We therefore sought to  
82 analyse the impact of L4-22K on the expression of Ad5 late proteins. Our data show that L4-22K is  
83 required for the transition to late phase MLTU expression and acts primarily at the level of RNA

84 processing. However, the action of L4-22K is different from that of the splice factor L4-33K and the  
85 two proteins are not functionally redundant.

86

## 87 **Materials and Methods**

88 **Plasmids.** pTG3602 (pWT), containing wild type Ad5 genome, and pTG3602-L4-22K<sup>-</sup> (pL4-22K<sup>-</sup>),  
89 containing a premature stop codon within the C-terminal unique portion of the L4-22K ORF that  
90 results in an additional *AvrII* restriction recognition site (Fig. 1B), have been described previously (8,  
91 31). Expression plasmids for C-terminal FLAG-tagged L4-22K and L4-33K (pCMV-22KFLAG and  
92 pCMV-33KFLAG) were constructed by insertion of *XbaI/PacI* fragments, amplified respectively  
93 from viral genomic DNA or viral mRNA using primers containing the restriction enzyme recognition  
94 sites (primer sequences available on request), into pCMV-FLAG (12). pBiL1-3NheI, pCMV-  
95 100KFLAG, and pCMV-22/33KFLAG, which expresses both L4-22K (no epitope tag) and L4-  
96 33KFLAG (12), pCMV-IX (5) and pMEPCMV-IVa2 (4) have been described previously.

97 pMLP+DEluc was generated by amplifying the MLP including DE1 and DE2 (Ad5 5939-6174)  
98 using primers containing restriction recognition sites for *KpnI* (5' primer) and *NheI* (3' primer) and  
99 cloning into pGL3-Basic luciferase reporter plasmid (Promega). pMLP-DEluc, containing the MLP  
100 without the downstream elements (Ad5 5939-6133), was generated in a similar way.

101 pcDNA3.1HisLacZ (Invitrogen) was used as a transfection control.

102

103 **Cells and Viruses.** 293 cells were maintained in Dulbecco's MEM (DMEM) supplemented with 5%  
104 fetal bovine serum (FBS). 293-IVa2 cells constitutively express IVa2 from an EBV replicon plasmid  
105 (4). 293TetOFF cells (Clontech) were maintained in DMEM supplemented with 10% Tet-free FBS  
106 and 100µg/ml geneticin (G418 sulphate, Melford Laboratories). An L4-22K complementing, stable

107 cell line (293-L4-22K) was generated by transfecting 293 cells with pCMV-22KFLAG and selecting  
108 clones in DMEM supplemented with 10% FBS and 500µg/ml geneticin. L4-22KFLAG expression  
109 was confirmed by immunoblotting and immunofluorescence using a mouse mAb to FLAG (M2,  
110 Sigma).

111 Wild-type virus was Ad5 strain 300 (wt300) (21). To generate an L4-22K<sup>-</sup> virus, 293-L4-22K  
112 cells were seeded into a 12 well plate and transfected with L4-22K<sup>-</sup> genome, excised from pTG3602-  
113 L4-22K<sup>-</sup> by *PacI* digestion, using Lipofectamine2000 (Invitrogen). When 60-80% cpe was observed  
114 cells were harvested, virus released by three freeze/thaw cycles and cellular debris removed by  
115 centrifugation. This L4-22K<sup>-</sup> virus stock was passaged 5 times to ensure removal of transfected  
116 genomic DNA. To confirm the presence of the mutated sequence in the P5 stock, virus particle DNA  
117 was isolated (16) and used as template for a PCR to amplify the Ad5 L4 region 26018-27086bp. PCR  
118 products were then digested with *AvrII*, which is diagnostic for the 22K<sup>-</sup> mutant (31). Virus titres  
119 were determined by fluorescent focus assay. Briefly, 293 cells were infected with a 10-fold dilution  
120 series of L4-22K<sup>-</sup> virus or wt300, fixed at 20h.p.i. with 10% formalin in phosphate-buffered saline  
121 (PBS) and permeablized with 0.5% NP40 in PBS before staining with a mouse mAb to DBP (B6-8,  
122 (34)) and goat anti-mouse Alexafluor488 antibody (Invitrogen). Virus titres (FFU/ml) were  
123 determined by the number of DBP positive cells at a given dilution (33). For wt300, 1 FFU was  
124 equivalent to 7 pfu.

125

126 **Transfection and Immunoblotting.** All transient transfections were carried out in 12 well plates at  
127 a density of  $7 \times 10^5$  cells/well using either Lipofectamine2000 (Invitrogen) or TransLT (Cambridge  
128 Bioscience) at a ratio of 3µl / µg DNA following the manufacturers' protocols. Transfections used  
129 1µg L4-22K<sup>-</sup> or wt genome, excised from pL4-22K<sup>-</sup> or pWT respectively by *PacI* digestion, and

130 500ng various expression plasmids or empty vector (pCMV-FLAG). Experiments using the pBi  
131 plasmid system were carried out as previously described (12). Transfected cells were harvested 48h  
132 post-transfection directly into sample loading buffer (2% (w/v) sodium dodecyl sulphate [SDS],  
133 50mM dithiothreitol [DTT], 10 % (v/v) glycerol, 25mM Tris pH 6.8 and 0.01 % bromophenol blue)  
134 and from 10 - 33% cell lysate volume resolved through either 10% or 15% SDS-polyacrylamide gels  
135 as appropriate. Proteins were transferred to ECL nitrocellulose membrane (GE Healthcare) and  
136 western blot analysis carried out as described (23). Proteins were detected using the following  
137 antibodies: FLAG, M2 mouse mAb (Sigma) at 1:10,000; Ad5 late proteins, AbJLB1 rabbit  
138 polyclonal serum at 1:10,000 (12); fibre, RI 89&99 rabbit polyclonal serum 1:5000 (obtained from  
139 V. Mautner, University of Birmingham, U. K.); E2A-DBP, mouse mAb B6-8 at 1:10,000; L1-  
140 52/55K, rabbit polyclonal serum raised to glutathione-S-transferase (GST) - L1-52/55K fusion  
141 protein at 1: 10,000, (3); L4-100K, mouse mAb at 1:10,000 (obtained from W.C. Russell, University  
142 of St. Andrews, (36)); IVa2, rabbit polyclonal serum raised to GST-IVa2 at 1:10,000, (4); IX, rabbit  
143 polyclonal serum at 1:5000, (5). Secondary antibodies were goat-anti-mouse-horseradish peroxidase  
144 (HRP; Sigma) at 1:5000 and goat-anti-rabbit-HRP (Santa Cruz) at 1:100,000. HRP signal was  
145 detected using ECL-Advance western blot detection kit (GE Healthcare) according to the  
146 manufacturer's instructions.

147

148 **RT-PCR.** Cells were scraped into PBS, pelleted by centrifugation, resuspended in isotonic buffer  
149 (150 mM NaCl, 10 mM Tris.HCl pH 7.6, 1.5 mM MgCl<sub>2</sub>) containing 0.6% v/v NP40 and incubated  
150 on ice for 10 min. before pelleting the nuclei by centrifugation at 16000 x g for 3 min. The  
151 cytoplasmic fraction was reserved and the nuclei resuspended in lysis solution (isotonic buffer  
152 containing 1% NP40 and 1% sodium deoxycholate). RNA was isolated from both the nuclear and



153 cytoplasmic fraction using TRI-reagent (Sigma) as described (29). 2µg RNA and 100U Superscript  
154 reverse transcriptase (RT; Invitrogen) were used with specific 3' primers to generate cDNA in a 25µl  
155 volume reaction using manufacturer's protocol. Equivalent RT<sup>-</sup> negative reactions omitted  
156 Superscript. 2.5µl RT<sup>+</sup> or RT<sup>-</sup> reaction were added to a PCR (1x PCR buffer, 0.5mM each dNTP,  
157 0.5µM 5' and 3' primer, 3mM MgCl<sub>2</sub> and 1-2.5U *Taq* polymerase (Fermentas) in a total volume of  
158 20µl). Primers used were complementary to Ad5 tripartite leader 1 sequence 6049-6069 and Ad5 L2-  
159 penton 14889-14863, Ad5 L2-V 17445-17415 or Ad5 L3-hexon 19254-19228, or to sequences  
160 flanking the Ad5 L3 poly(A) and E2A poly(A) sites 22034-22061 and 22749-22722, or to human β-  
161 actin cDNA positions 1430-1455 and 2383-2368. Reactions were incubated at 94°C for 5 min  
162 followed by 30 cycles of 94°C, 1 min, 65°C, 1 min and 72°C, 1 min. PCR products were resolved  
163 through 1% agarose alongside size markers (1kb Generuler, Fermentas).

164

165 **Southern Blot Analysis.** 293 cells were infected with  $2 \times 10^{-3}$  FFU/cell L4-22K<sup>-</sup> virus or wt300, and  
166 harvested 3 or 20h. p.i. Cells were processed either to purify packaged viral DNA, using spermine  
167 precipitation to remove unpackaged material (16), or for total low molecular weight DNA by HIRT  
168 extraction (18). DNA was digested with *HindIII*, resolved through 0.7% agarose and transferred to  
169 Hybond-N membrane (GE Healthcare) and viral DNA detected using an L1 probe (10,589-11,565bp  
170 from pGem4-L1 (37)) labelled using the AlkPhos direct labelling kit (GE Healthcare).

171

172 **Luciferase Assay.** 293 and 293-IVa2 cells were transfected with 500ng reporter plasmid  
173 (pMLP+DEluc or pMLP-DEluc) and 100ng pcDNA3.1HisLacZ, together with 500ng pCMV-  
174 22KFLAG and/or 1µg L4-22K<sup>-</sup> genome. All transfections were equalised for DNA content by the  
175 addition of either salmon sperm DNA or pCMV-FLAG as appropriate. Cells were lysed 24h post-

176 transfection in 1x passive lysis buffer and a luciferase assay carried out according to the  
177 manufacturer's instructions (Promega). Cell lysates were also analysed for  $\beta$ -galactosidase activity  
178 using 2-nitrophenyl- $\beta$ -D-galactopyranoside (ONPG) as substrate. The ratio of firefly luciferase to  $\beta$ -  
179 galactosidase was calculated to correct for differences in transfection efficiency. Data are shown as  
180 fold induction where luciferase expression from the reporter plasmids is set as 1. Statistical analysis  
181 was performed using Student's T-Test.

182

## 183 **Results**

184 **L4-22K is required for efficient late gene expression in 293 cells.** Our previous studies of the  
185 early to late transition in MLTU expression utilised plasmid pBiL1-3NheI, in which MLTU genomic  
186 sequence encoding the tripartite leader (TPL) and regions L1 – L3 was placed under the control of a  
187 heterologous promoter. Full late pattern expression could be induced from this plasmid by CMV  
188 expression vectors encoding L4-33K and -100K proteins (12). The “33K” plasmid utilised was also  
189 capable of L4-22K expression, although L4-22K had not been proven to exist at that time.  
190 Subsequently, L4-33K was shown by Tormanen et al. to be a splicing factor capable of activating  
191 certain MLTU splice sites (39). To determine whether L4-22K made any contribution to the MLTU  
192 activation observed in this system, plasmids expressing either L4-22K or L4-33K with C-terminal  
193 FLAG tags were constructed. When co-transfected with pBiL1-3NheI and an L4-100K vector to  
194 permit efficient hexon protein accumulation, L4-22KFLAG increased levels of several late proteins  
195 independently of L4-33K (Fig. 1C). These effects were qualitatively distinct, with L4-22K increasing  
196 penton expression more than, and hexon expression less than did L4-33K. These data suggested that  
197 L4-22K made a contribution to late protein expression from L1-L3, although it could not be excluded

198 that this effect was due to expression of a truncated L4-33K-related protein from the L4-22K plasmid  
199 clone.

200 To investigate fully the role of L4-22K in regulating MLTU expression, given the prior  
201 evidence that L4-22K and/or L4-33K might act on the MLP, we focused further studies on a whole  
202 genome system, in which the MLTU was controlled by the native MLP within linear full-length  
203 genome excised from pTG3602 (8). This also provided the possibility of IVa2 production that was  
204 not present in the pBi plasmid system. The role and mechanism of action of L4-22K in late gene  
205 expression from this genome was assessed by comparison with an L4-22K<sup>-</sup> genome that retained the  
206 ability to express full-length L4-33K (Fig. 1B, (31)), kindly provided by P. Hearing.

207 293 cells transfected with L4-22K<sup>-</sup> genome showed a decrease in late structural protein  
208 production (hexon, penton, IIIa, V and fibre) compared to a wt genome (Fig. 2A & B); while the  
209 absolute level of this defect varied between experiments, as exemplified here, it was always  
210 substantial. In addition, expression of the non-structural late proteins L4-100K and L1-52/55K from  
211 L4-22K<sup>-</sup> genome was reduced to virtually undetectable levels (Fig. 2B). The level of E2A-DBP  
212 detected was at least equivalent for L4-22K<sup>-</sup> and the wt genome, and possibly somewhat increased in  
213 the mutant, demonstrating that the defect in late protein expression was not due to differences in  
214 transfection efficiency and that the absence of L4-22K does not cause a global downregulation of  
215 viral protein production. Expression of all late proteins from the L4-22K<sup>-</sup> genome was restored to  
216 wild-type levels when cells were co-transfected with an expression plasmid for L4-22KFLAG (Fig.  
217 2A), confirming that the reduced late protein expression seen from L4-22K<sup>-</sup> genome was due solely  
218 to the lack of L4-22K expression. L4-22K has been shown previously to be involved in the  
219 packaging of Ad genomes into particles (31), so at 48 h post-transfection it was possible that the  
220 observed differences in late gene expression resulted from reduced levels of second-round infection

221 in L4-22K<sup>-</sup> genome-transfected cultures consequent upon a failure to package genomes efficiently.  
222 However, this possibility was discounted as similar results were observed at 20 h post-transfection, a  
223 time point when no progeny virus would have been able to reach the late phase of a secondary  
224 infection (data not shown). The late protein defect of L4-22K<sup>-</sup> is kinetic rather than absolute as, when  
225 analysis was delayed to 60 h post-transfection, L4-22K<sup>-</sup> genome produced similar levels of late  
226 proteins to those seen at 20 h post-transfection for either wt genome or L4-22K<sup>-</sup> genome co-  
227 transfected with L4-22KFLAG expression plasmid (data not shown). Thus L4-22K upregulates late  
228 gene expression in 293 cells.

229

230 **L4-22K acts via a different mechanism to L4-33K.** The stop codon inserted into the L4-22K ORF  
231 in pL4-22K<sup>-</sup> is located within the intron sequence of L4-33K ORF and it was possible that this  
232 mutation might affect the expression of L4-33K, hence causing some part of the observed defect in  
233 late protein production. Although the defect was complemented by L4-22KFLAG, this plasmid also  
234 has the capacity to express a truncated L4-33K protein consisting of the N-terminal 129 amino acids  
235 that might contribute to this complementation. The truncated protein would lack the C-terminal RS  
236 motifs that have been shown to be essential for this activity (39), making this unlikely. However, to  
237 exclude the possibility, L4-22K<sup>-</sup> was co-transfected with an expression plasmid for L4-33KFLAG.  
238 Expressing L4-33KFLAG *in trans* did not restore expression of either the structural proteins or L4-  
239 100K (Fig. 2B), although a small increase in L1-52/55K was observed. Late protein expression from  
240 L1 through to L5 was only restored when L4-22K was added *in trans* either from pCMV-22KFLAG  
241 or from a plasmid, pCMV-22/33KFLAG, capable of expressing both L4-22K and L4-33KFLAG  
242 from alternatively spliced transcripts (Fig. 2B). During complementation by pCMV-22K/33KFLAG,  
243 expression of the structural proteins and L4-100K was greater than that seen with L4-22K<sup>-</sup> genome

244 alone but was reduced compared to when L4-22KFLAG was expressed from pCMV-22KFLAG.  
245 This may reflect preferential expression of the spliced L4-33KFLAG transcript from this plasmid  
246 and consequently a lower expression level of L4-22K protein than was achieved with pCMV-  
247 22KFLAG. These data show that the defect in late gene expression is not due to any unexpected  
248 aberrations in L4-33K expression occurring due to the mutation in the intronic sequence of L4-33K  
249 ORF. Furthermore, the evidence clearly shows the mechanism of action of L4-22K is independent of  
250 L4-33K splicing function and thus indicates a direct role for L4-22K in the activation of the late  
251 phase of infection.

252

253 **Reduced late gene expression in the absence of L4-22K is not due to a defect in replication.** Full  
254 expression from the Ad5 MLTU is the end result of a temporal pattern of regulated gene expression.  
255 It is only once viral DNA replication has begun that the MLP is activated to produce maximal  
256 expression of the late structural genes from all MLTU regions. Thus a defect in replication could  
257 account for the reduction in late protein production observed from L4-22K<sup>-</sup> genome. To allow  
258 replication studies to be carried out without the concern of transfection efficiencies or the confusion  
259 of large quantities of input DNA, L4-22K<sup>-</sup> virus was isolated by transfection of L4-22K<sup>-</sup> genome into  
260 a stable L4-22K complementing cell line, 293-L4-22K. Although this cell line only expressed a low  
261 level of L4-22KFLAG, it was sufficient to permit the growth of virus to low titre.

262 The production of L4-22K<sup>-</sup> virus was confirmed by *AvrII* digest of PCR products amplified  
263 from DNA isolated from L4-22K<sup>-</sup> virus particles (Fig. 3A). Using particle DNA ensured that only  
264 newly synthesised and packaged DNA was acting as a template in the PCR and not any remaining  
265 transfected genome. Incubation of the L4-22K<sup>-</sup> virus product with *AvrII* resulted in the virtually  
266 complete cleavage to bands 532 and 536bp in size, indicating presence of the site diagnostic of the

267 L4-22K<sup>-</sup> mutation (31). The small amount of uncut DNA is likely to represent incomplete digestion.  
268 If any wild-type DNA was present, it would rapidly overgrow the slow-growing mutant but no  
269 increase in the proportion of this uncut species was seen upon further passage; the presence of the  
270 inserted stop codon was also confirmed by sequencing (data not shown). The L4-22K<sup>-</sup> virus had the  
271 packaging defect expected from previous work (Fig. 3B) (31). At 20 h. p.i. viral DNA was not  
272 detected for L4-22K<sup>-</sup> unless complemented by prior expression of L4-22KFLAG; when  
273 complemented, amounts of L4-22K<sup>-</sup> DNA were similar to wt virus. No viral DNA was detected at 3  
274 h. p.i. indicating that viral DNA detected at 20 h. p.i. was due to newly synthesised, packaged  
275 genomic DNA and not virus input. These data confirm the L4-22K deficient nature of the L4-22K<sup>-</sup>  
276 virus generated in this study both genetically and biologically.

277 To investigate the growth properties of L4-22K<sup>-</sup>, the late protein expression defect observed  
278 with transfected genome was first confirmed. Non-complementing cells infected with L4-22K<sup>-</sup> virus  
279 behaved identically to cells transfected with L4-22K<sup>-</sup> genome in showing a substantial impairment of  
280 structural protein expression (data not shown). Genome replication was then assessed (Fig. 3C). At  
281 3h. p.i. a low level of viral DNA was detected; this time point is too early for the synthesis of  
282 progeny viral DNA and thus shows the amount of input viral DNA. The increased level of viral DNA  
283 detected at 20 h. p.i. was similar for uncomplemented and complemented L4-22K<sup>-</sup> virus, showing  
284 that the absence of L4-22K has no effect on virus DNA replication. This result agrees with that  
285 reported previously in which replication of the L4-22K<sup>-</sup> genome was investigated in HeLa cells (31).  
286 The block in MLTU gene expression must therefore occur after DNA replication.

287

288 **A reduction in intermediate proteins IVa2 and IX is not fully responsible for the reduction in**  
289 **late protein expression from L4-22K<sup>-</sup>.** The two intermediate proteins, IVa2 and IX upregulate the

290 MLP activity during the transition between the early and late phases of infection (25, 26, 32, 40).  
291 IVa2 acts via binding, either as a homodimer (DEF-B) or heterodimer (DEF-A), to sequences DE1  
292 and DE2 within the MLP (20, 28). Furthermore, the pattern of differential protein expression  
293 observed here in the absence of L4-22K is similar to that reported previously for MLP DE1 and DE2  
294 mutants (32) suggesting that L4-22K may be acting via IVa2, perhaps as a component of DEF-A  
295 since enhanced binding of IVa2 to DE1,2 in the presence of 22K has been reported (31).

296       Expression of IVa2 and IX from L4-22K<sup>-</sup> genome alone was barely detectable, whereas  
297 levels of both proteins were substantially increased when L4-22KFLAG was co-expressed (Fig. 4A).  
298 To determine whether this reduction in intermediate proteins was responsible for the limited  
299 expression of late proteins observed for L4-22K<sup>-</sup> genome, these two proteins were expressed *in trans*.  
300 Co-transfection of L4-22K<sup>-</sup> genome with IVa2 expression plasmid increased expression of hexon,  
301 penton and the smaller isoform of protein V, but failed to increase IIIa, the upper isoform of V or  
302 pVI (Fig. 4B). In contrast, co-transfection with IX expression plasmid failed to increase the level of  
303 late gene expression significantly. When IX and IVa2 were expressed together, the level of all late  
304 proteins tested increased a little as compared to either protein alone. However, this late protein  
305 expression was very much lower than that seen when the L4-22K<sup>-</sup> genome was directly  
306 complemented by L4-22KFLAG (Fig. 4B).

307       L4-22K clearly increases the level of both IVa2 and IX proteins produced from transfected  
308 genome (Fig. 4A). In the case of IVa2 this may reflect a stabilisation of the protein rather than a  
309 transcription or RNA processing event since L4-22KFLAG also increases the level of IVa2 protein  
310 expressed from cDNA under the control of the heterologous CMV promoter (Fig. 4C); this effect  
311 was specific to L4-22K as neither L4-33KFLAG nor L4-100KFLAG had any effect (Fig. 4C). This  
312 observation suggests that the increase in IVa2 seen when L4-22K<sup>-</sup> genome is complemented is not

313 mediated through IVa2's interaction with L1-52/55K, its known partner in viral DNA packaging (15),  
314 expression of which also increases upon complementation of L4-22K<sup>-</sup> (Fig. 2B). The IVa2 sequence  
315 within pMEPCMV-IVa2 does not contain the binding site for the cellular repressor that blocks IVa2  
316 transcription prior to replication (9, 24) and thus L4-22K cannot be acting by relieving this  
317 repression. In addition, no effect of L4-22K on expression of other proteins from the CMV promoter  
318 was observed (data not shown). Therefore, we hypothesise that L4-22K acts to stabilise IVa2 protein.

319         It is possible that lack of IVa2 stabilisation by L4-22K is the reason why IVa2 expressed *in*  
320 *trans* can only partially complement the late protein expression defect of L4-22K<sup>-</sup> genome. However,  
321 this seems unlikely as the levels of IVa2 achieved were similar to those seen when L4-22K<sup>-</sup> was fully  
322 complemented by L4-22KFLAG. Furthermore, similar results were obtained when a cell line  
323 constitutively expressing high levels of IVa2 was used (Fig. 5C), excluding the possibility that L4-  
324 22K somehow affects IVa2 transfection efficiency. Alternatively, the requirement for L4-22K may  
325 reflect a direct contribution of this protein to the DEF-A transcription factor that is required for  
326 maximal activation of the MLP (31).

327

328 **L4-22K increases MLP activity in a DE-dependent manner.** To determine if L4-22K directly  
329 regulated transcription from the MLP, and whether this was DE-dependent, luciferase expression  
330 from MLP reporters either containing or lacking DE<sub>1,2</sub> was assessed in the presence of the L4-22K<sup>-</sup>  
331 genome or complemented genome (Fig. 5A). The presence of the genome ensured all viral proteins,  
332 other than L4-22K, that might be required for transcriptional activation were present in the system.  
333 Luciferase expression was increased 45-60 fold by the presence of the L4-22K<sup>-</sup> genome, regardless  
334 of the presence or absence of the DE elements. This significant increase occurred despite the fact that  
335 the L4-22K<sup>-</sup> genome displays a severe reduction in IVa2, IX and late protein synthesis. Expression of



336 L4-22KFLAG further increased the activity of pMLP+DEluc by two-fold compared to L4-22K<sup>-</sup>  
337 genome alone (p<0.005), whereas the activity of pMLP-DEluc was not significantly altered (p>0.1),  
338 demonstrating that the increase was DE-dependent (Fig. 5A). In contrast, L4-22KFLAG expressed in  
339 the absence of viral genome had no effect on the activity of MLP containing the DEs (Fig. 5B),  
340 suggesting that another viral protein was required in association with L4-22K.

341 A likely candidate protein was IVa2, which was known to act via the DEs (40) and had been  
342 shown to be stabilised in the presence of L4-22K (Fig. 4). To test whether DE-dependent MLP  
343 activation by L4-22K was indirectly due to increased IVa2 levels or due to a direct interaction of L4-  
344 22K and IVa2 at the DEs, MLP reporter activity was analysed in a cell line constitutively expressing  
345 high levels of IVa2 (293-IVa2) (4). Activity of the DE-containing MLP in 293-IVa2 cells was  
346 increased a modest 1.2 fold compared to its activity in 293 cells. When L4-22KFLAG was co-  
347 expressed in these cells, the increase was 1.6 fold compared to 293 cells, a 1.3 fold increase  
348 compared to 293-IVa2 cells (Fig. 5B). Therefore, both L4-22K and IVa2 contribute to MLP  
349 activation. However, the small increase in MLP activity observed when L4-22KFLAG is expressed  
350 in the presence of high levels of IVa2 does not explain the large differences in the expression of late  
351 proteins, notably penton and IIIa, from complemented genome in the same cell line (Fig. 5C). This  
352 suggests that L4-22K may have a role in late gene expression that is post-transcriptional, in addition  
353 to its effects, with or via IVa2, at the MLP. This conclusion is supported by the observed increase in  
354 L1-3 gene expression from a heterologous promoter in the presence of L4-22KFLAG, when no IVa2  
355 was present (Fig. 1C).

356

357 **L4-22K acts at the level of late gene mRNA production/stability.** To determine whether L4-22K  
358 was exerting its post-transcriptional effect at the level of mRNA or protein production, the amounts

359 of penton, V and hexon mRNA produced by L4-22K<sup>-</sup> and wt virus were assessed. Penton and V  
360 mRNA production from L4-22K<sup>-</sup> virus was barely detectable, compared to readily detectable  
361 expression from wt virus (Fig. 6); this defect was fully complemented when L4-22KFLAG was  
362 expressed *in trans* (Fig. 6). In contrast, the level of hexon mRNA produced by L4-22K<sup>-</sup> virus was  
363 similar to that from wt and not further increased when complemented by L4-22K. PCR products  
364 were not from DNA contamination of the template as equivalent reactions containing no reverse  
365 transcriptase were negative (Fig. 6). The quantity and quality of RNA used was confirmed by the  
366 equivalent amplification of  $\beta$ -actin mRNA (Fig. 6). Therefore, a major component of the reduction in  
367 late gene expression observed for L4-22K<sup>-</sup> is at the level of late mRNA production and/or stability,  
368 and the action of L4-22K is selective for specific mRNAs.

369

370 **L4-22K does not increase the level of un-processed late mRNA.** To further clarify the role of L4-  
371 22K in transcription and RNA processing, the level of unspliced nuclear MLTU RNA was  
372 determined by RT-PCR amplification of a region spanning the L3 polyadenylation signal sequence  
373 (Ad5 22034-22722); this region is only present in RNA unprocessed at the L3 polyadenylation site.  
374 Amounts of unprocessed L3 RNA in wt and L4-22K<sup>-</sup> virus infections were comparable, and  
375 complementation of L4-22K<sup>-</sup> virus with L4-22KFLAG had no effect (Fig. 7 left upper panel). The  
376 level of unprocessed E2A RNA, tested as a control since its protein product was unaffected by L4-  
377 22K, was equal for all samples as expected (Fig. 7 right upper panel) and control reactions lacking  
378 reverse transcriptase were negative (Fig 7 right lower panel), indicating that the PCR products were  
379 generated from RNA template. These data provide further evidence against a major role for L4-22K  
380 in transcriptional activation of the MLP, and focus attention instead on MLTU mRNA processing as  
381 its principal site of action.

382

## 383 **Discussion**

384 Ad5 late protein synthesis is regulated at the level of transcription, mRNA processing and  
385 translation. Early in infection, MLTU expression is limited to L1-52/55K. However, after DNA  
386 replication begins, expression extends across MLTU regions L1 through to L5 resulting in over 20  
387 distinct mRNAs and thus proteins. The L4 region is expressed immediately after DNA replication  
388 (22) and two of its three non-structural protein products have been described as factors involved in  
389 the regulation of late protein synthesis. L4-33K is required for late mRNA splicing (12, 39) whereas  
390 L4-100K is responsible for selective translation of late mRNAs (17) and for the stabilisation and  
391 assembly of hexon trimers (6). The results presented here demonstrate that the third L4 non-  
392 structural protein, L4-22K, is also involved in the regulation of late protein expression and appears to  
393 have distinct functions in transcription and RNA processing.

394 A L4-22K deficient genome exhibited a reduction in both structural and non-structural late  
395 protein expression from MLTU regions L1 through to L5 (fibre, hexon, penton, IIIa, V, VI, L4-100K  
396 and L1-52/55K) compared to a wt genome, and this defect was fully complemented by exogenous  
397 L4-22K expression. The first impact of L4-22K deficiency was in the late phase as early gene  
398 expression, demonstrated by E2A-DBP levels, was not affected and newly synthesised DNA levels  
399 from L4-22K<sup>-</sup> virus-infected cells were comparable to those when L4-22K<sup>-</sup> was complemented with  
400 exogenous L4-22K. L4-22K has been shown previously to be required for viral genome packaging  
401 (31), and this same defect was also observed in this study. However, failure to package genome  
402 efficiently could not be the cause of the observed reduced late gene expression since the defect was  
403 seen at times post-infection when any secondary infections could not have reached the late phase of

404 gene expression. Thus, defective late gene expression is a primary consequence of L4-22K  
405 deficiency.

406 L4-33K has been shown previously to upregulate late gene expression post-transcriptionally  
407 (12, 39), so it was possible that lack of L4-22K affected late protein production via a failure to  
408 express L4-33K correctly. No antibodies specific for L4-33K were available to test this directly.  
409 However, L4-33K expressed *in trans*, in contrast to L4-22K, had almost no impact on the defective  
410 late gene expression from L4-22K<sup>-</sup> genome. Therefore the reduction in late gene expression from this  
411 mutant genome is a direct effect of the absence of L4-22K and not a consequence of either  
412 unanticipated aberrant expression of L4-33K due to the L4-22K<sup>-</sup> mutation that lies within the L4-33K  
413 intron or reduction in L4-33K levels that might result from the lack of L4-22K effects on the MLP.  
414 Moreover, the action of L4-22K must be independent of the demonstrated effect of L4-33K on late  
415 mRNA splicing.

416 When high level transcription from L1-L3 regions was rendered independent of Ad5 IVa2  
417 and other viral factors by the use of a heterologous promoter, complementation by L4-22K  
418 upregulated penton levels disproportionately to hexon, the reverse of the effect of L4-33K. These  
419 observations fit with the work of Tormanen et al. who, when showing that L4-33K was the  
420 previously demonstrated Ad late splicing factor (39), found that L4-33K had no effect on penton  
421 mRNA splicing *in vitro*. These authors classified splice sites by length of polypyrimidine tract and  
422 showed that splicing stimulation by L4-33K correlated inversely with tract length. Our findings  
423 therefore raise the possibility that L4-22K might also be selective for a particular class of splice site.  
424 If so, it does not correspond to polypyrimidine tract strength; penton and V mRNA levels were both  
425 strongly L4-22K – responsive in our study even though their 3' splice sites have very different  
426 polypyrimidine tracts and V mRNA splicing was reported to be strongly stimulated by L4-33K in

427 contrast to the lack of effect on penton (39). Hexon mRNA accumulation did not require L4-22K in  
428 our study despite hexon protein production being strongly dependent on L4-22K. This discordance is  
429 explained by the dependence of hexon protein accumulation on the presence of L4-100K (12), which  
430 was itself found to be strongly dependent on L4-22K for its expression. Taken together, these data  
431 suggest that L4-33K and L4-22K each act post-transcriptionally to support the development of the  
432 full pattern of late viral gene expression in different ways.

433 As well as the late proteins, the two intermediate proteins, IVa2 and IX were reduced in the  
434 absence of L4-22K. These two proteins are only expressed after viral DNA replication has begun (10,  
435 19), and both have been implicated in activation of the MLP. The data presented here show that L4-  
436 22K increases IVa2 protein levels, independent of the IVa2 promoter and known regulatory  
437 sequences. IVa2 has been shown previously to bind to L4-22K during Ad DNA packaging, and L4-  
438 22K also promotes the binding of IVa2 to the MLP DEs (31). Thus, we suggest that L4-22K  
439 increases IVa2 levels by binding and stabilising it, and via this action L4-22K achieves a modest  
440 activation of the MLP that is dependent on the DEs. However, this effect is minor in comparison  
441 with the overall effect of L4-22K on late gene expression.

442 Previous studies have sought to address the function of L4 proteins through directed mutation  
443 of the L4 reading frames. A virus with a stop codon at position 20 of the shared L4-33K/22K reading  
444 frame (v33K.1) and expected to lack both proteins was viable, with normal early gene expression  
445 and viral DNA replication but a substantial defect in late protein synthesis (13), a phenotype that is  
446 similar to that found here for L4-22K. However, a virus with its L4-33K reading frame truncated by  
447 stop codons and expected to lack the C-terminal 47 residues proved impossible to isolate, suggesting  
448 it was a lethal mutation (14). This finding suggests that v33K.1 must be leaky for functional L4-33K  
449 expression and hence also for L4-22K, although since we have not been able to complement the  $\Delta 47$

450 mutant genome (kindly provided by S. J. Flint) in a cell line expressing L4-33K (data not shown), it  
451 is also possible that the severe  $\Delta 47$  phenotype includes pleiotropic effects not directly attributable to  
452 a lack of L4-33K. In this case, v33K.1 may represent the true null phenotype for both L4-22K and  
453 L4-33K. The L4-22K<sup>-</sup> virus that was isolated here, using the mutated plasmid genome constructed by  
454 Ostapchuk and colleagues (31), was clearly viable and showed defects in late gene expression and  
455 genome packaging. It retained the restriction site difference diagnostic of the original mutation and  
456 its phenotype was identical to that of the transfected genome from which it was derived. Thus,  
457 although it cannot be excluded that its viability results from second-site mutation(s) that compensate  
458 for aspects of the L4-22K<sup>-</sup> phenotype, this seems unlikely. Because of the shared L4-33K/22K exon,  
459 the L4-22K<sup>-</sup> mutation truncates the reading frame only after 113 residues. It thus has the potential to  
460 express a substantive protein, albeit containing only 8 residues of the 22K-unique sequence, which  
461 might have residual functions distinct from those of L4-33K. Although no shorter protein  
462 immunoreactive with anti-33K serum was detected from this genome (31), a contribution of such a  
463 protein to the viability of L4-22K<sup>-</sup> virus cannot be excluded. However, our data, taken together with  
464 previous studies, suggest that Ad5 can grow, albeit with low efficiency, without L4-22K and that  
465 impaired late gene expression and particle formation is the null phenotype for this protein.

466 Our results on late gene expression in the absence of L4-22K differ from those previously  
467 reported using the L4-22K<sup>-</sup> genome. Ostapchuk and colleagues reported no differences from wt in  
468 replication, DBP, L1-52/55K, hexon or penton protein levels (31). In this study we also detected no  
469 differences in replication or DBP levels, but detected a clear reduction in the levels of L1-52/55K,  
470 penton and to a lesser extent hexon. We believe the previous data do in fact show some differences  
471 in L1-52/55K and penton levels but to a considerably lesser degree than our data indicate. Different  
472 cell types, 293 and HeLa, were used for the two studies but this does not appear to explain this

473 difference since we consistently observed the same L4-22K<sup>-</sup> late gene expression defect in infected  
474 HeLa cells as seen in 293 cells by either genome transfection or virus infection (data not shown).  
475 Possibly, either culture conditions or HeLa cell strain differences affect the expression of host cell  
476 factors with which L4-22K needs to interact to upregulate late gene expression and hence modulate  
477 the severity of the phenotype observed. Alternatively, differences between the two studies in the  
478 effective time post-infection / transfection that assays were conducted may provide an explanation,  
479 since the defect in late gene expression that we observed diminished as the time to assay was  
480 extended.

481         The MLP is activated by several factors, including the binding of DEF-A and DEF-B to the  
482 downstream elements DE1 and DE2. The importance of these factors is most apparent in the absence  
483 of activation via upstream promoter elements (32). DEF-A is a heterodimer of IVa2 and another  
484 protein, and there is published evidence for this protein being either L4-33K or L4-22K (2, 31). Our  
485 data do not bear directly on this issue, since no studies of protein interactions with the DEs were  
486 performed. However, MLP activity was shown to be only modestly stimulated by L4-22K, in  
487 cooperation with IVa2, suggesting that L4-22K is not the unknown component of DEF-A. This does  
488 not exclude that a complex of IVa2 and L4-22K can bind to the DEs, as previously reported (31);  
489 indeed, our data on IVa2 stabilisation suggest that increased IVa2 complex formation on the DEs  
490 when L4-22K is present should be expected.

491         In contrast to the modest effects on MLP of IVa2 and L4-22K, the presence of the full viral  
492 genome *in trans* with the MLP reporter caused a 60-fold increase in activity. This suggests that  
493 something other than IVa2 or L4-22K is required, either another factor expressed from the genome  
494 or the presence of replicating genome itself. One possible factor is E2A-DBP, which has previously  
495 been shown to increase MLP activity substantially (7) and is expressed from L4-22K<sup>-</sup>. Another

496 potential activating factor coming from L4-22K is E1A. However, 293 cells already express E1A,  
497 and we have observed only a slight increase in luciferase expression from another E1A-responsive  
498 reporter in these cells when E1A is further over-expressed, Nonetheless, it is possible that the  
499 population of E1A isoforms expressed in 293 cells is functionally altered during viral infection and  
500 that the activation of the MLP in this context is a reflection of this. Further experiments are therefore  
501 required to determine the basis of MLP activation by Ad genome.

502 This study, together with previous reports, shows that the L4 region of the MLTU provides  
503 two crucial regulators of the temporal transitions in MLTU RNA processing that are observed over  
504 the course of Ad infection. L4-22K and L4-33K have complementary effects that together provide  
505 the normal pattern of mRNA production during the late phase of infection. L4-33K was shown  
506 previously to be a splicing factor that activates splicing to specific late mRNA 3' splice sites.  
507 However, this activity did not extend to all splice sites whose activity is seen to increase during the  
508 early-late transition in MLTU expression. It is possible that L4-22K is also a splicing factor, but with  
509 a distinct specificity from L4-33K. Alternatively, it may act less directly, perhaps via changes in host  
510 proteins. Further experiments are needed to address these questions.

511

## 512 **Acknowledgements**

513 We gratefully acknowledge the following colleagues for their generous gifts of reagents used  
514 in this study: P. Hearing, Stony Brook University, N.Y.; S. J. Flint, Princeton University, N.J.; W. C.  
515 Russell, University of St. Andrews, U.K.; V Mautner, University of Birmingham, U.K. This work  
516 was supported by the Biotechnology and Biological Sciences Research Council (grant number  
517 BB/E014550/1).

518



519 **References**

- 520 1. **Akusjarvi, G.** 2008. Temporal regulation of adenovirus major late alternative RNA splicing.  
521 *Frontiers in Bioscience* **13**:5006-15.
- 522 2. **Ali, H., G. LeRoy, G. Bridge, and S. J. Flint.** 2007. The adenovirus L4 33-kilodalton  
523 protein binds to intragenic sequences of the major late promoter required for late phase-  
524 specific stimulation of transcription. *J Virol* **81**:1327-38.
- 525 3. **Arslanoglu, A.** 1999. Studies of adenovirus L1 gene aimed at L1 gene deficiencies for use in  
526 gene therapy vectors. PhD Thesis, University of Warwick, U.K.
- 527 4. **Brey, S.** 1999. Construction of IVa2-deficient adenovirus using complementing cell lines.  
528 PhD Thesis, University of Warwick, U.K.
- 529 5. **Caravokyri, C., and K. N. Leppard.** 1995. Constitutive episomal expression of polypeptide  
530 IX (pIX) in a 293-based cell line complements the deficiency of pIX mutant adenovirus type  
531 5. *J Virol* **69**:6627-33.
- 532 6. **Cepko, C. L., and P. A. Sharp.** 1982. Assembly of adenovirus major capsid protein is  
533 mediated by a nonvirion protein. *Cell* **31**:407-15.
- 534 7. **Chang, L. S., and T. Shenk.** 1990. The adenovirus DNA-binding protein stimulates the rate  
535 of transcription directed by adenovirus and adeno-associated virus promoters. *J Virol*  
536 **64**:2103-9.
- 537 8. **Chartier, C., E. Degryse, M. Gantzer, A. Dieterle, A. Pavirani, and M. Mehtali.** 1996.  
538 Efficient generation of recombinant adenovirus vectors by homologous recombination in  
539 *Escherichia coli*. *J Virol* **70**:4805-10.
- 540 9. **Chen, H., R. Vinnakota, and S. J. Flint.** 1994. Intragenic activating and repressing elements  
541 control transcription from the adenovirus IVa2 initiator. *Mol Cell Biol* **14**:676-85.

- 542 10. **Crossland, L. D., and H. J. Raskas.** 1983. Identification of adenovirus genes that require  
543 template replication for expression. *J Virol* **46**:737-48.
- 544 11. **Davison, A. J., M. Benko, and B. Harrach.** 2003. Genetic content and evolution of  
545 adenoviruses. *J Gen Virol* **84**:2895-2908.
- 546 12. **Farley, D. C., J. L. Brown, and K. N. Leppard.** 2004. Activation of the early-late switch in  
547 adenovirus type 5 major late transcription unit expression by L4 gene products. *J Virol*  
548 **78**:1782-91.
- 549 13. **Fessler, S. P., and C. S. H. Young.** 1999. The role of the L4 33K gene in adenovirus  
550 infection. *Virology* **263**:507-516.
- 551 14. **Finnen, R. L., J. F. Biddle, and J. Flint.** 2001. Truncation of the human adenovirus type 5  
552 L4 33-kDa protein: evidence for an essential role of the carboxy-terminus in the viral  
553 infectious cycle. *Virology* **289**:388-99.
- 554 15. **Gustin, K. E., P. Lutz, and M. J. Imperiale.** 1996. Interaction of the adenovirus L1 52/55-  
555 kilodalton protein with the IVa2 gene product during infection. *J Virol* **70**:6463-7.
- 556 16. **Hardy, S., M. Kitamura, T. Harris-Stansil, Y. Dai, and M. L. Phipps.** 1997. Construction  
557 of adenovirus vectors through Cre-lox recombination. *J Virol* **71**:1842-9.
- 558 17. **Hayes, B. W., G. C. Telling, M. M. Myat, J. F. Williams, and S. J. Flint.** 1990. The  
559 adenovirus L4 100-kilodalton protein is necessary for efficient translation of viral late mRNA  
560 species. *J Virol* **64**:2732-42.
- 561 18. **Hirt, B.** 1967. Selective extraction of polyoma DNA from infected mouse cell cultures. *J Mol*  
562 *Biol* **26**:365-9.

- 563 19. **Iftode, C., and S. J. Flint.** 2004. Viral DNA synthesis-dependent titration of a cellular  
564 repressor activates transcription of the human adenovirus type 2 IVa2 gene. *Proc Natl Acad*  
565 *Sci U S A* **101**:17831-6.
- 566 20. **Jansen-Durr, P., G. Mondesert, and C. Keding.** 1989. Replication-dependent activation  
567 of the adenovirus major late promoter is mediated by the increased binding of a transcription  
568 factor to sequences in the first intron. *J Virol* **63**:5124-32.
- 569 21. **Jones, N., and T. Shenk.** 1978. Isolation of deletion and substitution mutants of adenovirus  
570 type 5. *Cell* **13**:181-8.
- 571 22. **Larsson, S., C. Svensson, and G. Akusjarvi.** 1992. Control of adenovirus major late gene  
572 expression at multiple levels. *J Mol Biol* **225**:287-98.
- 573 23. **Lethbridge, K. J., G. E. Scott, and K. N. Leppard.** 2003. Nuclear matrix localization and  
574 SUMO-1 modification of adenovirus type 5 E1b 55K protein are controlled by E4 Orf6  
575 protein. *J Gen Virol* **84**:259-68.
- 576 24. **Lin, H. J., and S. J. Flint.** 2000. Identification of a cellular repressor of transcription of the  
577 adenoviral late IVa(2) gene that is unaltered in activity in infected cells. *Virology* **277**:397-  
578 410.
- 579 25. **Lutz, P., and C. Keding.** 1996. Properties of the adenovirus IVa2 gene product, an  
580 effector of late-phase-dependent activation of the major late promoter. *J Virol* **70**:1396-405.
- 581 26. **Lutz, P., M. Rosa-Calatrava, and C. Keding.** 1997. The product of the adenovirus  
582 intermediate gene IX is a transcriptional activator. *J Virol* **71**:5102-9.
- 583 27. **Michou, A. I., L. Santoro, M. Christ, V. Julliard, A. Pavirani, and M. Mehtali.** 1997.  
584 Adenovirus-mediated gene transfer: influence of transgene, mouse strain and type of immune  
585 response on persistence of transgene expression. *Gene Ther* **4**:473-82.

- 586 28. **Mondesert, G., C. Tribouley, and C. Keding.** 1992. Identification of a novel downstream  
587 binding protein implicated in late-phase-specific activation of the adenovirus major late  
588 promoter. *Nucleic Acids Res* **20**:3881-9.
- 589 29. **Morris, S. J., H. Smith, and C. Sweet.** 2002. Exploitation of the Herpes simplex virus  
590 translocating protein VP22 to carry influenza virus proteins into cells for studies of apoptosis:  
591 direct confirmation that neuraminidase induces apoptosis and indications that other proteins  
592 may have a role. *Arch Virol* **147**:961-79.
- 593 30. **Nevins, J. R., and M. C. Wilson.** 1981. Regulation of adenovirus-2 gene expression at the  
594 level of transcriptional termination and RNA processing. *Nature* **290**:113-8.
- 595 31. **Ostapchuk, P., M. E. Anderson, S. Chandrasekhar, and P. Hearing.** 2006. The L4 22-  
596 kilodalton protein plays a role in packaging of the adenovirus genome. *J Virol* **80**:6973-6981.
- 597 32. **Pardo-Mateos, A., and C. S. Young.** 2004. Adenovirus IVa2 protein plays an important role  
598 in transcription from the major late promoter in vivo. *Virology* **327**:50-9.
- 599 33. **Philipson, L.** 1961. Adenovirus assay by the fluorescent cell-counting procedure. *Virology*  
600 **15**:263-8.
- 601 34. **Reich, N. C., P. Sarnow, E. Duprey, and A. J. Levine.** 1983. Monoclonal antibodies which  
602 recognize native and denatured forms of the adenovirus DNA-binding protein. *Virology*  
603 **128**:480-4.
- 604 35. **Russell, W. C.** 2000. Update on adenovirus and its vectors. *J Gen Virol* **81**:2573-2604.
- 605 36. **Russell, W. C., G. Patel, B. Precious, I. Sharp, and P. S. Gardner.** 1981. Monoclonal  
606 antibodies against adenovirus type 5: preparation and preliminary characterization. *J Gen*  
607 *Virol* **56**:393-408.

- 608 37. **Soloway, P. D., and T. Shenk.** 1990. The adenovirus type 5 i-leader open reading frame  
609 functions in cis to reduce the half-life of L1 mRNAs. *J Virol* **64**:551-8.
- 610 38. **Symington, J. S., L. A. Lucher, K. H. Brackmann, A. Virtanen, U. Pettersson, and M.**  
611 **Green.** 1986. Biosynthesis of adenovirus type 2 i-leader protein. *J Virol* **57**:848-56.
- 612 39. **Tormanen, H., E. Backstrom, A. Carlsson, and G. Akusjarvi.** 2006. L4-33K, an  
613 adenovirus-encoded alternative RNA splicing factor. *J Biol Chem* **281**:36510-7.
- 614 40. **Tribouley, C., P. Lutz, A. Staub, and C. Kedinger.** 1994. The product of the adenovirus  
615 intermediate gene IVa2 is a transcriptional activator of the major late promoter. *J Virol*  
616 **68**:4450-7.
- 617 41. **Yang, J., T. Tsukamoto, N. Popnikolov, R. C. Guzman, X. Chen, J. H. Yang, and S.**  
618 **Nandi.** 1995. Adenoviral-mediated gene transfer into primary human and mouse mammary  
619 epithelial cells in vitro and in vivo. *Cancer Lett* **98**:9-17.
- 620 42. **Yang, Y., H. C. Ertl, and J. M. Wilson.** 1994. MHC class I-restricted cytotoxic T  
621 lymphocytes to viral antigens destroy hepatocytes in mice infected with E1-deleted  
622 recombinant adenoviruses. *Immunity* **1**:433-42.
- 623 43. **Yang, Y., F. A. Nunes, K. Berencsi, E. E. Furth, E. Gonczol, and J. M. Wilson.** 1994.  
624 Cellular immunity to viral antigens limits E1-deleted adenoviruses for gene therapy. *Proc*  
625 *Natl Acad Sci U S A* **91**:4407-11.
- 626 44. **Zabner, J., L. A. Couture, R. J. Gregory, S. M. Graham, A. E. Smith, and M. J. Welsh.**  
627 1993. Adenovirus-mediated gene transfer transiently corrects the chloride transport defect in  
628 nasal epithelia of patients with cystic fibrosis. *Cell* **75**:207-16.
- 629 45. **Zhang, W., and M. J. Imperiale.** 2000. Interaction of the adenovirus IVa2 protein with viral  
630 packaging sequences. *J Virol* **74**:2687-2693.

631 46. **Zhang, W., J. A. Low, J. B. Christensen, and M. J. Imperiale.** 2001. Role for the  
632 adenovirus IVa2 protein in packaging of viral DNA. *J Virol* **75**:10446-10454.

633

## 634 **Figure legends**

635 **Figure 1.** (A) Schematic diagram of the major late transcription unit showing the alternatively  
636 spliced mRNAs and encoded proteins. (B) Organisation of the L4-22K and L4-33K ORF. The  
637 position of the L4-22K truncation mutation in L4-22K<sup>-</sup> is indicated (31). (C) 293TETOFF cells,  
638 which constitutively express the tetracycline transactivator protein were transfected with pBiL1-  
639 3NheI (which expresses the MLTU L1-3 region under the control of a tetracycline-regulated  
640 promoter), pCMV100KFLAG and either empty vector or the L4-22KFLAG or L4-33KFLAG  
641 expression plasmids. Cell lysates were harvested 48h post-transfection, separated on 10%  
642 polyacrylamide gel and late proteins, as indicated on the right, detected by western blot analysis  
643 using AbJLB1 polyclonal anti-late protein serum. The positions to which proteins of known  
644 molecular mass migrated are shown on the left (kDa).

645

646 **Figure 2. Late protein expression from L4-22K<sup>-</sup> genome.** Cells were mock transfected or  
647 transfected with L4-22K<sup>-</sup> genome and either empty vector or various L4 expression plasmids as  
648 indicated. Ad5 wt genome was used as a control. Cell lysates were separated on 10% polyacrylamide  
649 gels and expressed proteins, as indicated at the right of each panel, detected by western blot analysis  
650 using either AbJLB1 polyclonal anti-late protein antiserum (top panels, A & B), RI polyclonal anti-  
651 late protein antiserum to detect fibre (B) or monospecific / monoclonal antibodies as indicated. In top  
652 panel B, all lanes shown derive from the same exposure of a single blot with irrelevant lanes excised  
653 for clarity of presentation. Note that no FLAG-tagged 22K is detected from transfection of the single

654 L4-22/33K plasmid as the tag sequence is only attached to the 33K reading frame. However, the  
655 expected expression of 22K from this plasmid can be inferred from its effect on late protein  
656 expression. The positions to which proteins of known molecular mass migrated are shown on the left  
657 (kDa).

658

659 **Figure 3. L4-22K has no effect on viral DNA replication.** (A) Confirmation of L4-22K<sup>-</sup> mutant  
660 status. L4-22K<sup>-</sup> virus was generated and passaged five times in a stable L4-22K complementing cell  
661 line, 293-L4-22K. Ad5 26018-27086 bp region was amplified by PCR from DNA isolated from  
662 either L4 22K<sup>-</sup> or wt virus particles. PCR products were either undigested or digested with *AvrII* as  
663 indicated. Lane M, 1kb ladder, sizes marked on the left (kbp). (B) L4-22K effects on packaging. 293  
664 cells were either mock transfected or transfected with L4-22KFLAG and 24 h. later infected with 2 x  
665 10<sup>-3</sup> FFU/cell L4-22K<sup>-</sup> virus or Ad5 wt. Packaged DNA isolated from infected cells at either 3 h. p.i.  
666 or 20 h. p.i. was digested with *HindIII* and analysed by southern blotting using an L1 probe. (C) L4-  
667 22K effects on replication. As B. except DNA was obtained by HIRT extraction of cell cultures at 3  
668 h. or 20 h. 50ng Ad5wt viral DNA was used as a positive control (B & C).

669

670 **Figure 4. Restoring expression levels of the intermediate proteins IVa2 and IX does not fully**  
671 **complement L4-22K<sup>-</sup>.** (A&B) 293 cells were mock transfected, or transfected with L4-22K<sup>-</sup>  
672 genome and either empty vector or various expression plasmids as indicated. (C) 293 cells were  
673 mock transfected, or transfected with the IVa2 expression plasmid with either empty vector or  
674 various L4-protein expression vectors as indicated. Cell lysates were separated on 10% or 15%  
675 polyacrylamide gels and expressed proteins detected by western blot analysis using anti-IVa2, anti-

676 IX or AbJLB1 anti-late protein antisera. The positions to which proteins of known molecular mass  
677 migrated are shown on the left (kDa).

678

679 **Figure 5. L4-22K increases transcription activity of IVa2 at the MLP.** (A) 293 cells were  
680 transfected with pMLP+DEluc (black bars) or pMLP-DEluc (grey bars), alone or with L4-22K<sup>-</sup>  
681 genome and various expression plasmids as indicated. (B) 293 cells (grey bars) or 293-IVa2 (black  
682 bars) cells were transfected with pMLP+DEluc (black bars), alone or with L4-22K<sup>-</sup> genome and  
683 various expression plasmids as indicated. Firefly luciferase expression was detected using a  
684 luciferase assay, corrected for transfection efficiency using  $\beta$ -galactosidase expression from an  
685 independent control plasmid, and expressed as fold induction where expression from the reporter  
686 plasmids alone was set as 1. Error bars show standard deviations where n = 3. (C) 293 or 293-IVa2  
687 cells were transfected with L4-22K<sup>-</sup> genome and either empty vector or L4-22KFLAG expression  
688 plasmid. Cell lysates were separated on 10% polyacrylamide gels and expressed proteins detected by  
689 western blot analysis using AbJLB1 anti-late protein or anti-IVa2 antisera. The positions to which  
690 proteins of known molecular mass migrated are shown on the left (kDa).

691

692 **Figure 6. L4-22K increases the level of late mRNA.** RT-PCR amplifications were performed on  
693 total cytoplasmic RNA from 293 cells that were either mock transfected or transfected with L4-  
694 22KFLAG and 24 h. later infected with  $2 \times 10^3$  FFU/cell L4-22K<sup>-</sup> virus or Ad5 wt as indicated. Late  
695 mRNAs were detected by RT-PCR using a 5' primer specific for tripartite leader 1 and 3' primers  
696 directed to L2 penton (947bp product), L2 V (1138bp) or L3 hexon (662bp) 3' exons. Equivalent  
697 control reactions were performed lacking reverse transcriptase (RT<sup>-</sup>); amplification of  $\beta$ -actin mRNA  
698 (511bp product) served as a positive control. For V mRNA, both RT-PCR and RT<sup>-</sup> results derive



699 from the same experiment and are presented at the same exposure. The positions to which DNA size  
700 markers migrated are indicated (kbp).

701

702 **Figure 7. L4-22K acts at the level of RNA processing.** 293 cells were either mock transfected or  
703 transfected with L4-22KFLAG expression vector. 24h post-transfection, cells were mock-infected, or  
704 infected with  $2 \times 10^{-3}$  FFU/cell L4-22K<sup>-</sup> virus or Ad5 wt and nuclear RNA isolated 20h p.i. Amounts  
705 of L3 RNA unprocessed at the L3 polyA site (upper left panel), and of E2A RNA unprocessed at its  
706 polyA site (upper right panel), were determined by RT-PCR using specific primers.  $\beta$ -actin mRNA  
707 served as a positive control (lower left panel). To confirm that amplified products derived from  
708 RNA template, the same amount of RNA was added to reactions where the reverse transcriptase had  
709 been omitted (lower right panel). The positions to which DNA size markers migrated are indicated  
710 (kbp).

Figure 1

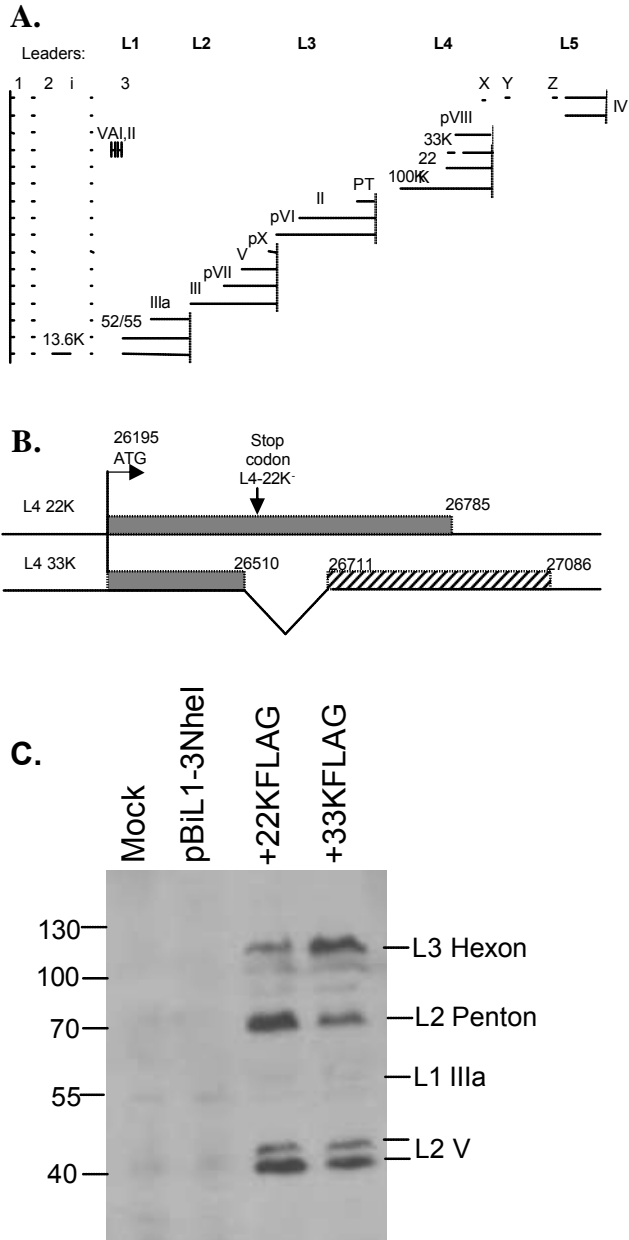


Figure 2

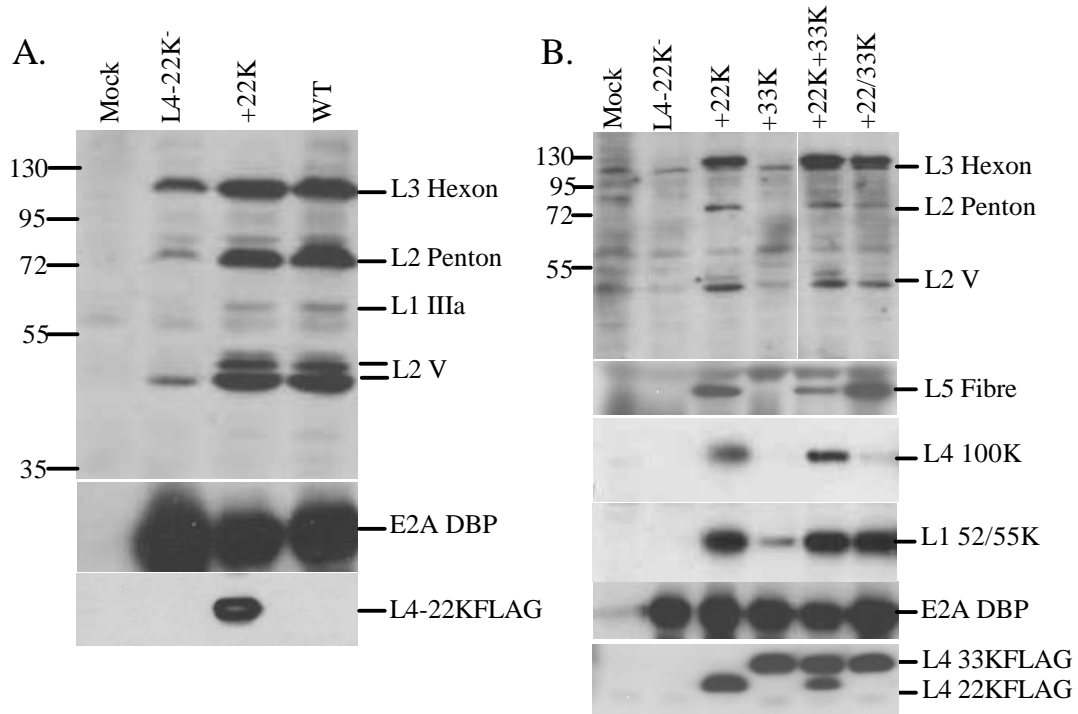


Figure 3

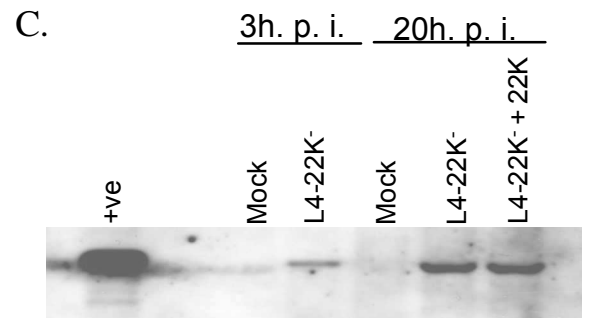
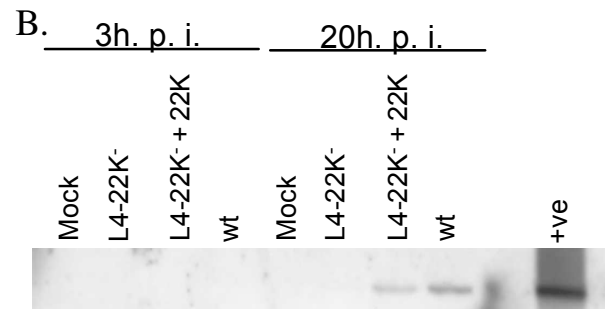
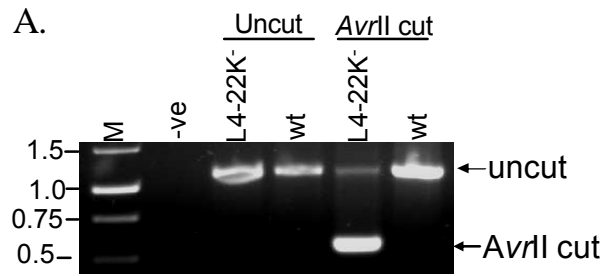


Figure 4

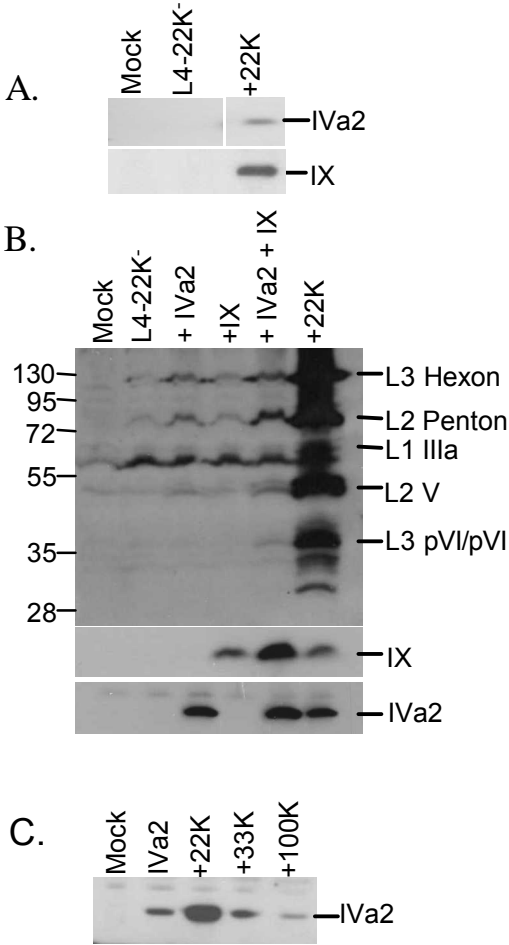


Figure 5

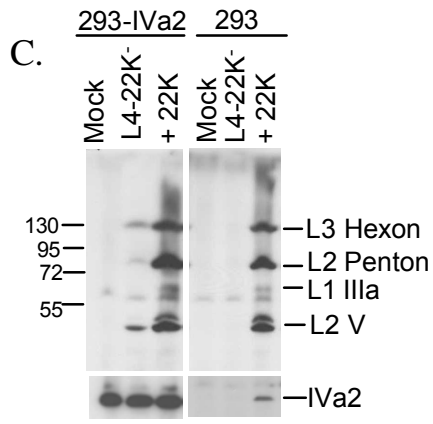
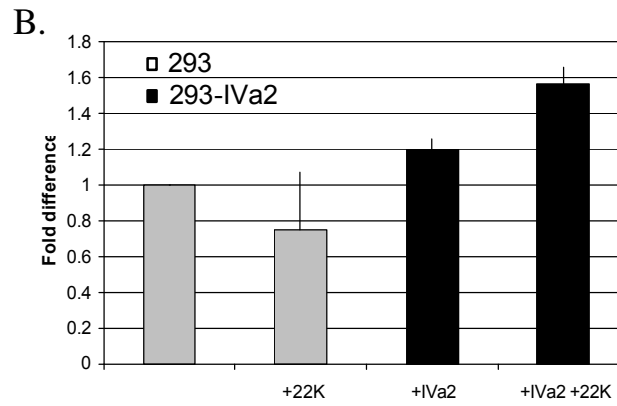
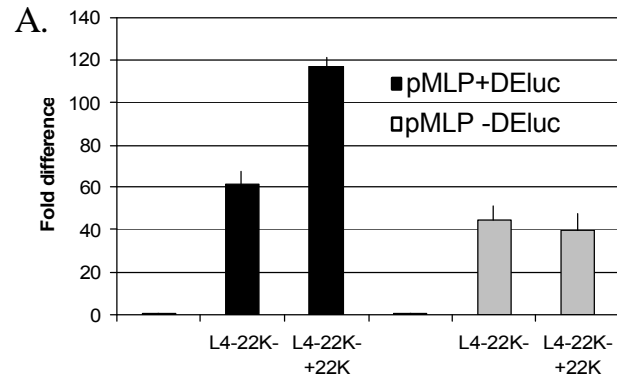




Figure 7

