

10-1978

The Pan American (1978-10)

Juan Castillo
Pan American University

Follow this and additional works at: <https://scholarworks.utrgv.edu/panamerican>



Part of the [Education Commons](#)

Recommended Citation

The Pan American, UTRGV Digital Library, The University of Texas – Rio Grande Valley. Accessed via <https://scholarworks.utrgv.edu/panamerican>

This Book is brought to you for free and open access by the Special Collections and Archives at ScholarWorks @ UTRGV. It has been accepted for inclusion in University Newspaper - The Pan American by an authorized administrator of ScholarWorks @ UTRGV. For more information, please contact justin.white@utrgv.edu, william.flores01@utrgv.edu.

The Pan American

Weekly Student Newspaper

EDINBURG, TEXAS

THURSDAY, OCTOBER 5, 1978

Vol. XXVII No. 5

Berets Protest Police Brutality During Rally

By JUAN CASTILLO
News Editor

Brown Berets organizers, speaking to some 150 students here Thursday, protested the death of a Mexican American youth killed while watching a Pharr riot seven years ago.

Alfredo Laredo Flores died when he was struck by a stray bullet in 1971. A monument in his honor was erected Saturday by the Berets at the site where he was killed.

The one-hour appearance by the Berets here was sponsored by El Sol, a Chicano student organization. The Berets, four of whom spoke to the small crowd, were apparently received well.

Their speeches were interrupted by applause on several occasions. Less than a 100 yards away however, the snake bar was filled to capacity by students who huddled from the cold and drizzling weather, first such of the infant fall season.

Those who braved the elements heard the speakers touch on a general theme of alleged police violence and brutality.

Ernesto Fragga, addressed the crowd first and told them 14 Mexican-Americans in Texas had died this year while in police custody. The added 35 Mexican-Americans in the southwestern U.S. have also died under the same circumstances.

"Only 1 percent of all of the police officers (involved) have gone to court to answer (for the deaths)," Fragga shouted. He did not attribute the statistics.

Referring to the controversial death of Larry Ortega Lozano, an Odessa prisoner who died while in police custody, Fragga said, "Justice is something no longer guaranteed in the courts."

Many Mexican American groups, including the Berets, have charged Lozano was beaten to death. Ektor County law enforcement officials have claimed the prisoner committed suicide.

Fragga earlier said Lozano had suffered 92 abrasions. Throughout the rally, Berets displayed photographs of an injured Lozano.

Fragga spoke almost non-stop and without script for some 30 minutes. The other three speakers split about equally the remaining time.

Also referred to several times during the rally were the American "capitalist" and "fascist" system, and a need for self-determination and control by Mexican Americans.

"What we are faced today is a modern day fascist system that tells our own people (Mexican American) we are our own enemies," Fragga said.

He later said Mexican-Americans are a "colonized people," and that "it will take some guts" to assume more control.

The appearance went without serious incident. At one point however, a student told one Beret, about the photographs of Lozano, "All that shows is a beaten up man." The Beret ignored the statement.



Staff Photo by JORGE VILLARREAL

In separate demonstrations here at Pan American and in Pharr, Brown Beret members, left, stand over displayed photographs of Larry Ortega



Staff Photo by RIGO ORDAZ

Lozano, and right, honor the death of Alfredo Flores, a man killed while watching a 1971 Pharr riot, with a six-gun salute.

John Hill, Texas attorney general and Democratic gubernatorial candidate, was in Edinburg Tuesday to officially open Democratic Headquarters located across the campus. Hill commented on statements of support made by Gov. Briscoe's family for Bill Clements. Clements is opposing Hill in the Nov. governor's election.

Staff Photo by JORGE VILLARREAL



SA President Forced To Resign

Pan American's Students' Association president, saying he lacked the grade point average prescribed as a requirement for office, has resigned.

The GPA requirement is stipulated in an election code set by the University.

In his letter of resignation, Sam Saldivar Jr. said; "Due to the little time I have had to devote to my studies, effective Oct. 1 I will be resigning."

Saldivar had previously hoped to resign after Oct. 9 in order to complete Student Senate-approved programs and to "meet previously scheduled commitments," the letter stated. "But a committee looking into my records has cut that time short, and possibly for the best to all concerned," the resignation letter continued.

Saldivar held office nearly 14 months. His letter contained a lengthy list of program goals he claimed were achieved during his tenure.

"The only promise I made in my campaign for your trust as a student representative which is yet to be obtained is a student on the board of regents . . . the issue which has been discussed for at least six years," the letter concluded.

Also Inside

● Newsbits, see page 4

● "Quotes", see page 2

QUOTES



Salgado



Morales

Bobbie Salgado is a junior business management major. Formerly a graduate student with a career associate degree in fashion design at Midland Junior College, she was "attracted to the Valley during summer vacation."

Salgado was a cheerleader at Midland and a member of Kappa Omega. She worked three and a half years as an accounting clerk for Forest Oil Corporation.

What improvements if any, should be made in the University?

"Can you change the weather?"

What has impressed you about the University?

"I was impressed by the faculty. The faculty here give more attention to the students, and they actually are more talkative to them."

Has there been any difference between the junior college you attended and Pan American?

"In Midland, classes were small. I one of my classes here, we have something like 80 students."

Do you feel crowded in this size class?

"I was shocked at first, but then I enjoyed it. Actually there are more ideas contributed from every student, not just a few."

How about the students themselves? Any difference there?

"What was our minority at Midland, is a majority at Pan Am. The student over there were never involved. From what I've seen, students have the initiative to make something of themselves, whereas at home they wouldn't."

"People can tell when your not from the Valley. They say you talk different."

"I came to Pan American University because I was interested in the beautiful campus."

Mary Jane Morales is a freshman majoring in Business Administration, specializing in office administration. Her hobbies are racketball, bowling and hooking rugs.

What was your first impression of the Valley when you came here?

"The Mexican-Americans are very ambitious, in my home town, the Mexicans were treated different."

When did you decide to come to Pan Am?

"I couldn't afford to leave home after graduation, so I worked at a bank. I later decided to start school, so I picked Pan Am because of its environment."

What improvements do you feel Pan Am needs?

"First, there is not enough parking. Second, there could be more spirit and student unity. Everyone's in their own groups."

Which person has influenced your life most?

"Definitely I would say my parents had the biggest influence on me."

COMMENTARY

A Review

New Theatre Season Opens

By TED DANIEL

The University Theatre opened the 1978-79 season with Lu Ann Hampton Laverly Oberlander, a successful play set in a small town in West Texas and written by Texas playwright and actor, Preston Jones.

Linda Noble as LU ANN drew applause in the first act with her portrayal as a half-baked senior in high school who seems willing to marry almost anybody to get away from the dull, small town of Bradleyville; as Lu Ann the young divorcee and bar fly at Red's Bar in act two, and finally as Lu Ann the middle aged beautician and nurse for her own invalid mother in act 3.

Ms. Noble's fine three part performance was complimented with a superb cast of supporting characters including Harry Dancey playing Billy Bob Wortman--Lu Ann's high school sweetheart--Kent Smither playing Skip--Lu Ann's never-do-well brother--and Keith Bodenhamer as Red the bartender. Mayo Caceres, Ricky Salinas, Kitty Bodenhamer, Mark Servis, Steve Copold, Ricardo E. Saldivar Jr. and Lynn Cramer also played their roles convincingly.

The success of the play was determined by the

meticulous revelation of Lu Ann's character in three different time sequences: 1953, 1963, and 1973 respectively.

Under the obviously perfectionist directing of Dr. Marian F. Monta, Ms. Noble and her supporting cast held the audience spellbound for all three acts. Lights, sets, sound effects and even the witty program reflected the professional quality of their tire production.

Crude but humorous dialogue expertly rendered in a typical West Texas twang and realistic costumes and makeup helped carry the play through to its pathetic, ironic anti-climax. Somewhat reminiscent of Larry McMurtry's *Last Picture Show*, the depressing social tragedy shown here last spring, *Lu Ann Hampton Laverly Oberlander* was more comical.

What saved Lu Ann from being totally crushed by her sterile environment and plain bad luck was her sense of humor.

You see, even after her brother had tried to kill himself and turned into a wino and her first husband had run off and her second one had been killed--even after her mother was stricken by a "by God" paralyzing stroke--Lu Ann Hampton Laverly Oberlander still thought that Billy Bob Wortman has a silly name.

'Ideal Benefits' Said Making Jogging Increasingly Popular

BY CYNTHIA GARCIA
STAFF REPORTER

Throughout the nation--as well as on campus--jogging has become increasingly popular. An estimated 25 million people participate in the sport.

Jogging is almost the ideal exercise.

Physically, it brings many benefits. Flabby muscles become firmer; the jogger with "iron-poor blood" feels more energetic, less fatigued and more exhilarated. There's overall sense of well-being.

Some doctors claim jogging prevents heart attacks and improves life expectancy; however, most runners are people who eat sensibly, keep their weight down and are non-smokers.

Weight loss is another advantage to jogging. It can be a waste of time though if the jogger overeats or fails to follow good eating habits.

Running two miles a day--15-20 minutes--without dieting can help the jogger lose one pound in about two weeks experts say. Even more weight can be lost if the jogger diets.

Strengthening of the heart is attributed to running. It also increases blood supply, improves the blood-clotting characteristics and lowers concentration of cholesterol, the latter associated with heart disease.

The breathing process is made easier by running. The process is more efficient, so

less energy is used.

Psychologically, many runners claim to have greater work production, more relaxation and better sleep.

Coaches and champion runners recommend that a person who wants to get into running should begin by covering a fairly short distance at a comfortable speed. They advise that running be done in comfortable shoes and a warm-up session be done before starting. Also, the beginning jogger should be sure to be in good health before beginning.

Instead of stopping and resting immediately after running, walking for several

minutes keeps joints from stiffening up right away.

Unlike other sports, a jogger can run in a variety of places; tracks, golf courses, and parks are popular. Running on grass or dirt is easier on the knees and ankles than running on a hard surface such as a street or sidewalk.

Finally, it is important for the beginning runner to start off slowly and then gradually increase speed and distance. And very important exercise should be regular to be beneficial.

"Once in a while" is not enough.

Editor's Note:

The Pan American welcomes and will print letters from readers. All letters must be signed and must include the writer's address and telephone number. Because of limited space, letters should not exceed 200 words. The Pan American reserves the right to edit.

UNIVERSITY EVENTS CALENDAR

October 5

Young Democrats LRC 8:30-4:00
IKs Blood Drive Ballroom 9:00-2:00
ISA LA 105 10:25-11:35
Demos. LA 115 10:30-11:30
Employment Council 305 A 10:30-11:30

October 6

GED Testing 306 A 7:45-4:15
Placement CEEP Workshop Ballroom 1:30-2:00
Young Demos. LRC 8:30-4:00

October 9

Cooperative Ed. 305 A 8:00-4:00
Placement Career Planning Snack Bar 8:30-3:00
Marines
Delta Zeta 305 A 5:00-9:00
Kappa Delta 305 A 6:30-8:00
Kappa Sigma 306 A 6:30-9:00
Phi Kappa Theta 306 A 6:30-9:00
Delta Zeta Pledges 307 A 7:00-9:00

October 10

Placement DAT testing 306 A 8:00-5:00
Placement U.S. Marines Snack Bar 8:00-4:30
APO 305 A 10:25-11:35
C. S. O. 307 A 10:25-11:35
El Sol 309 A 10:25-11:35
AM Chemical Society SB No. 3 10:30-11:30
Ladies of Camelot 305 A 5:00-7:00
Dept. of Human Resources Ballroom 5:30-10:00

October 11

Placement U.S. Marines Snack Bar 8:30-3:00
IK 305 A 6:00-10:00
Kappa Delta 307 A 6:30-10:00

October 12

Placement U. S. Marines Snack Bar 8:30-3:00
ISA LA 105 10:25-11:35
U. C. P. C. Ballroom 10:25-11:35
Young Demos LA 115 10:30-11:30
Drama Dept. 307 A 4:30-6:00

Write To Viewpoints

Pan American Classified Ads

Will type research papers, themes or essays. Call 686-4370 after 6 p.m.

CONTACT LENS WEARERS. Save on brand name hard or soft lens supplies. Send for free illustrated catalog. Contact Lens Supplies, Box 7453, Phoenix, AZ 85011

DIAMOND ENGAGEMENT & WEDDING RINGS: Up to 50% discount to students, faculty & staff. Example, 1/4 ct. \$150, 1/2 ct. \$350, 1 ct. \$995, by buying direct from leading diamond cutter. For color catalog send \$1 to SMA Diamond Importers, Inc., Box 42, Fanwood, N.J. 07023 (indicate name of school) or call (212) 682-3390 for location of showroom nearest you.

TEACH OVERSEAS! For details, send self-addressed, stamped, long envelope to: Teaching, Box 1049, San Diego, CA 92112.

HELP WANTED-PART TIME: Name your own hours, training class, materials supplied. For more details or interview, write or call TIARA EXCLUSIVES, P.O. Box 204, Weslaco, TX 78596 or call 968-6389. Collect calls accepted. R.T. Bookout

Would like to share an apartment with mature, discreet, trustworthy, unobtrusive student who already has apartment. Can pay up to \$100 a month. Please run classified ad in The Pan American newspaper giving name and telephone number.

The Pan American

News Editor
Associate Editor
Staff Reporter
Staff Reporter
Desk Assistants

Juan Castillo
Ricky Juarez
Leticia Diaz
Cynthia Garcia
Rosalinda Alvarez
Linda Brown
Oscar Garza
Terry Welz
Rigo Ordaz
George Villareal
Phyllis Priscoll
Joe Mangin
Harry Quin

Sports Editor
Sports
Staff Photographer
Staff Photographer
Advertising Manager
Circulation Manager
Adviser

The Pan American student newspaper at Pan American University published by Student Publications, Emilla Hall 100, phone 381-2541, at Edinburg Texas 78539, each Thursday except during examinations and holidays under Dr. Miles Nevarez, vice president for student and university affairs, and Harry Quin, adviser. Views presented are those of students and do not necessarily reflect those of the University administration. Subscription price by mail, \$3 a year, \$1.50 per semester. Contributions and letters should be submitted by Friday before publication.

Porch Lifts Expected To Help Handicapped

Handicapped students living at the dorms here will soon have easier access to those buildings.

Porch lifts--an elevator type apparatus--are now being constructed on the east side of the men's and women's dorms. The devices will enable students in wheelchairs to be lifted to the first floor balcony.

Patio doors on the first floor balconies will be fixed so the person in the

wheelchair can get to the first floor living area.

The porch lift operates automatically when a switch is turned on (a key is used to turn on the switch). The lift comes down and a steel ramp is extended so the wheelchair can roll onto the non-skid surfaced platform.

A guard rail, which prevents slipping, provides for the safety of the person using the lift. The porch lift is then raised to the first floor

balcony.

According to Dr. Homer Peña, assistant to the president, porch lifts have been in use for awhile. He said, "although cost of ramps for both dorms is quite a bit," it is considerably less than cost of concrete ramps which were originally planned."

At least two rooms in each dorm have been equipped with special facilities for handicapped persons. Handrails (in bathrooms) and shade-type doors have been installed in the rooms.

Every building on campus is accessible to handicapped students, Peña added.

All of the buildings comply with Vernon's Civil Statutes. Some requirements for certification include lowered drinking fountains and special bathroom facilities.

Lalo Gomez, resident engineer, said the University is changing or has already changed types of access which handicapped persons have to the other buildings on campus. Specially designated parking spaces next to buildings are also available to them.

According to Gomez, the University's policy is to have a pleasant atmosphere in which students may learn. Suggestions regarding facilities for the handicapped may be discussed with Gomez at the new Academic Support Facility building across from the dorms.



"Lu Ann" Opens Season

The curtain has opened on another season of quality plays at the University Theatre.

The drama department's first production, "Lu Ann Hampton Laverty Oberlander," opened Wednesday, and seven more performances are scheduled today through Saturday.

"Lu Ann Hampton Laverty Oberlander," is from a collection of plays by Dallas playwright Preston Jones. The first production was presented in 1974 at the Dallas Theatre Center with subsequent productions and a limited Broadway run.

"Lu Ann" holds a special appeal for Texas audiences. Styled with the same sincerity as McMurtry's "Hud" and "The Last Picture Show," playwright Jones has given a realistic view of life in a small Texas town.

Krueger To Make Campaign Stop Here

U.S. Rep. Krueger will visit the campus Oct. 9 when he will speak to students in the circle in front of the snack bar. He is expected to arrive at 10:15 a.m., according to visit organizers.

Along with Krueger will be other Democratic political leaders of the Valley. Krueger is the Democratic candidate for the U.S. Senate seat held by John Tower.

Krueger was elected in 1974 and then reelected with 72 per cent of the vote in 1976. At the end of his first term, he was voted "most efficient" of the 75 first-term Democrats.

Krueger will touch the issues of education, human and civil rights, and welfare during his visit.

Tower to be at Show

U.S. Sen. John Tower will appear at the Confederate Air show Saturday from 11 a.m. to 4 p.m. according to spokesman for Young Texans for Tower.

Students needing a ride to the show may call Mike Pile, 686-5789, or Gracie Garcia, 585-2838.

Young Texans will continue to man voter registration tables today and Friday in front of the snack bar.

Ask Pete

Dear Pete,

Some of my classes are real hard. Nobody else seems to have problems like me. Math and English are the hardest. My grades don't look so good so far. What should I do??

Joe

Dear Joe,

You are not alone! Many students have trouble in their courses. Some students find it helpful to study with a classmate who understands the course. Other students discuss questions with their professor.

Tutoring can help too. There is tutoring available on campus free of charge. To get tutored all you have to do is sign up in Office Building "E".

Correction

The date for a workshop on the role of women as political party leaders was incorrectly printed in last week's issue of The Pan American.

"Changing Role of Women in the Political Process" will be presented by Edinburg branch Association of American University Women Oct. 18 at 7:30 p.m. in the Ballroom.

The date was previously printed as Sept. 26.

The Pan American regrets any inconvenience caused by the error.



For Back To School An Eye Examination Is Suggested By Family Optical

WE OFFER

- Hard and soft contact lenses
- Sunglasses
- Fashion Eyewear

FAMILY OPTICAL

816 South Main
McAllen, Texas
687-7224

Positive fashion is a reflection of the needs of the woman whose intuitive values are in harmony with the natural order. At Famolare we know her and she knows us. And the respect is mutual. Designer J. J. Famolare creates for two or for all who disdain the artificial and who value the genuine and the simple.

FAMOLARE

for the woman who is secure about fashion.

SROES Sportique

VISA 2110 North Tenth Shopping Center
McAllen, Texas 682-7151

NEXT TO GALLAGHERS TRAVELS

NEWSBITS

Assistantships Available

Two undergraduate research assistant ships are available for a study of the fauna and flora of South Padre Island.

The stipends are \$2.65 per hour for a maximum of 10 hours per week. Duties include field assistance and help with record keeping and clerical work. The study will run through August 1979.

Interested students should provide a transcript and brief letter of interest to Dr. Frank W. Judd, department of biology by Sept. 29. Assistants will be selected on the basis of academic performance and background, interests and interview.

Students Have Priority

Dr. Darrel Black, head of the Health and Physical Education Department, said recently students and faculty members have priority in using physical education facilities.

However, they must present I.D. cards to use the gym, tennis courts and swimming pool.

The general public can use some recreational facilities as long as use does not interfere with activities of the physical education department, Black said. Public organizations can use the gym and pool; however, they must pay a service charge.

Med-Tech Elects Officers

The Society for Medical Technologists elected officers for the coming year at their reorganization meeting Sept. 14, 1978.

Officers elected were: Mary Miller, president; Lucy Hinojosa, vice-president; Maria Perez, secretary-reporter; Gill Smith, treasurer; and Abder-Rahim Qausmeh, parliamentarian.

Gloria Ibanez and John Abraham are club sponsor and adviser respectively.

Co-op Program Has Job Openings

The Cooperative Education Program at Pan Am has a wide range of jobs available from California to Washington, D.C. Full-time work is also available in the Valley area through the co-op program.

Jobs are now available to students majoring in math, physics, chemistry, pre-law, pre-engineering, psychology, biology, business, community services, government, history, pre-med, English, communications, criminal justice, sociology and education.

Any student who has completed a minimum of 30 hours of course work is eligible to join the program. Interested students may attend the co-op council meeting today during Activity Period in room 116 of the University Center.

The co-op full-time program is open to the veteran. In this program the veteran can receive educational benefits in addition to the co-op salary.

Vets Number 1100

Arnoldo Perez, of Veterans Representatives on Campus (VROC), said Friday there are approximately 1,100 students attending Pan American on the G.I. Bill.

Of those 1,100 students, 15 to 20 are girls. Single veterans are receiving \$311 to help pay for education. Married veterans receive \$370, and if they have a child, receive \$422. Funding continues for 45 months while the veteran attends school.

The Vietnam Readjustment Act of 1966 covers the veterans from Feb. 1, 1955 to Dec. 31, 1976.

The G.I. Bill became available here in June, 1974. Veterans who feel they qualify may contact Arnoldo Perez or Bill Miller, 383-7612.

50 Students In HEP

Clementina Cantu, director of the High School Equivalency Program, says 50 students from the South Texas area are enrolled in this year's program.

With 50 enrolled participants for this year, HEP's purpose is to inspire migrants and high school dropouts of the 17 through 24 age group to obtain their General Education Development (G.E.D.) certificate.

While attending the ten-month program, students are provided with a dorm room, meals, and are given \$12 a week to meet their expenses. Last year 154 H.E.P. students were enrolled of whom 124 graduated, and 110 of them found jobs or continued their education.

Computer Registration Returns to PAU

Computer Registration will be used again next spring, according to Bill Morris, Director of Admissions.

How it works is not so complicated. It is a simple process by which the student determines seven different courses and has two choices or more for each section of classes. He then, runs the schedule through a computer center.

Beginning freshmen get first choices just as always. The main objective of this system is done for the benefit of each student. The student has more priorities, time is saved, and students, have a better chance of selecting instructors that they want.

Morris said he is not certain if there will be other plans or changes made so far. Morris said that Ray Ortiz, of comptroller and others are setting up ways to make changes.

Carnival Plans Begin

Plans are presently underway for the University's traditional fall event, The Carnival of the Great Pumpkin.

Date for the carnival has been set for Oct. 28, according to Tony Vela, university center director.

The carnival is one event where student organizations work together for their own benefit, and to promote a good time for the entire student body, Vela said.

The event, coordinated by UCPC, will be held in the Science Building parking lot, at the corner of Sugar Road and Van Week.

Various activities are planned, including a Halloween costume contest, domestic and international food booths, spook house and a band.

There will be no admissions charge to the carnival grounds.

Number of Stickers Up

Even though enrollment here is down, the number of parking stickers issued has increased in comparison to those issued during the 1977 fall semester.

Traffic and Security Chief Greg Salazar attributed the decrease in the number of students who are car pooling.

During Sept. 1977, a total of 4,354 stickers were issued, while a total of 4,893 stickers have been issued as of Sept. 15, 1978. Salazar also stated he expects an increase in the number of stickers purchased.

Faculty Club Sets Tentative Meeting Date

The first organizational meeting of the Pan American University Social Ensemble (PAUSE) has been tentatively set for Friday, Oct. 6, according to John Piety, acquisition librarian. A site for the meeting has yet to be determined and will be disclosed in a notice at a later date.

PAUSE is a social club for faculty members and spouses which meets one Friday night every month at a site in either Edinburg or McAllen. Meetings provide the only time for all departments to gather, relax and socialize together.

The main interest of the club being to promote a time for socializing and refreshment. "The club is simply a nice opportunity for new faculty members to get acquainted with other PAU faculty," Piety said.

Students Visit In Louisiana, Arkansas

Geology students are on a three-day jaunt of Daisy State Park, and Crater of Diamonds State Park, the only diamond pipe and mine in this country. The park is located at Murfreesburgh, and Edgewood and DeGray State Parks in Ark.

The trip is planned Oct. 5-8, with 15 students and one professor, Neal Barse, making the trip. The trip is sponsored by both the University of Southern Louisiana in Lafayette, La. and the University of Arkansas at Little Rock.

Press Club Organizes

The Press Club has reorganized and is in search of new club members. All mass communication majors and anyone interested is urged to join.

"We have reorganized by agreeing to make the club social as well as time-worthy. Right now we are open for suggestions to money-making plans so that we may enter a booth in the Carnival of the Great Pumpkin that is coming up in October," said vice-president, Juan Castillo.

Meetings are held every Thursday in Emilia Hall room 100 during activity period. Anyone interested in joining may come by and talk to club adviser Mr. Harry Quin. Club fee is \$2 per semester.

Press Club officers for 1978-79 are: president-Rigo Ordaz, vice-president-Juan Castillo, secretary-treasurer-Leticia Diaz, and reporters-Rudy Juarez and Anna Barera.

Colds Pose Problem

The Student Health Services has recently had a tremendous amount of students being treated for colds, scratchy throats, eye and ear infections, and coughs. However, Dora Castillo, head of the department, indicated that the greatest problem so far has been that of colds.

Castillo said flu shots are also available for all those who need it. She commented that the purpose of the treatment is to alleviate symptoms of these minor diseases.

Cheerleader Tryouts Still Pending

Cheerleader tryouts for the academic school year are still pending according to Jim McKone, sports information director. The announcement will be made sometime in October for those interested in trying out for one of the 10 spots that will be available.

Last year 28 girls tried out for the coveted positions but only 10 were chosen. They were: Mary Lou Pecina, Yolanda Salinas, Leslie Spruell, Bonnie Gilday, Jackie Drake, Joyce Perez, Nelda Villegas, Rosemary Rincones, Amber Gonzales and Elva Salazar.

Book Is Doing Well

The 1301 Spanish book is "working out beautifully" according to Dr. James C. Maloney, editor of "Español Para Hablantes Nativos." The reason for such success is due to the fact that the book is written in the Spanish of this area. Co-authors of the book are Jugo Mejias and Gloria Garza Swan. "Mejias was chosen because of his knowing linguistics, while Swan was chosen for her originality and being a master teacher," Maloney said.

Mejias is teaming with Victoria Contreras to work on another Spanish book dealing with grammar and composition. The book will be out in September, 1979.

Lot Entrance Converted

The University Traffic and Security Department reports the southwest entrance to the Liberal Arts building parking lot, also known as parking lot "C," has been converted to an exit only. A temporary barricade has been placed at the entrance to allow access to outgoing traffic only.

The new entrance is in the far west side of the parking lot just off Sugar Road. Joe Ponce, of the Security Department, said it became necessary to close off the entrance because incoming traffic was getting bottled up, causing students to be late to classes.

For the ultimate
in Hair Design
for Men and Women
by Salvador & Linda



THE BRANDING IRON
JIM B. CLOVER - EDINBURG 79639

CALL -
512 363-7122



LITTLE TOTS
NURSERY
& PRE-SCHOOL

\$23.50 per week

BREAKFAST, HOT
LUNCH TWO SNACKS

HOURS 6:30 A. M. - 6 P. M.

383-8221

204 E. Stubbs
Edinburg



FALCON'S
HAIRSTYLING

phone for an appointment
383-9012

520 E. UNIVERSITY
EDINBURG



CB BIRTHDAY SALE

CB radio is your key to highway safety and information. With CB in your car, you're in touch with many state and local police, motels, service stations and volunteer groups like REACT. In 20 years CB has grown from a hobby to become America's friendliest "party line"!



A. TRC-427 MOBILE by Realistic—Channel 9 priority switch lets you report emergencies immediately. LED indicator alerts you to antenna shorting or mismatch. Your key to highway safety! 21-1534

\$89 SAVE 60⁹⁵
Reg. 149⁹⁵

B. TRC-449 AM/SSB MOBILE by Realistic—Single-sideband triples channels and power to get your message through! LED mode lights and channel indicator with dimmer for nighttime operation. 21-1562

199⁹⁵ SAVE \$70
Reg. 269⁹⁵

C. REGULATED DC POWER SUPPLY—Use mobile CB's or tape players at home! 13.8V DC regulated output at 2.5 amps continuous current (5 amps surge). Circuit breaker protected. 22-124

21⁹⁵ SAVE 37%
Reg. 34⁹⁵

D. OMNIDIRECTIONAL CROSSBOW® BASE ANTENNA—.64-wave for long-range reception. Virtually eliminates static. Vertically polarized. With triple "U" clamp bracket for up to 1 1/2" masts. 21-964

34⁹⁵ SAVE 25%
Reg. 46⁹⁵

E. TRUNK-MOUNT ANTENNA—No holes to drill! Weather and corrosion-resistant top and bottom fittings. Stainless steel shock spring. With 16-ft. cable and connectors. 21-926

17⁹⁵ SAVE 25%
Reg. 23⁹⁵

F. 3-RANGE CB TESTER—Measures power, % modulation and antenna SWR from 3-30 MHz. Earphone jack, remote coaxial coupling unit. A must for the serious CB-er or amateur radio operator! 21-522

19⁹⁵ SAVE 23%
Reg. 25⁹⁵



CHARGE IT (MOST STORES)

RADIO SHACK OWNS AND OPERATES 20 ELECTRONICS FACTORIES!

LAS PALMAS SHOPPING CENTER

583-4051

403 E. UNIVERSITY DR.

EDINBURG

Most items also available at Radio Shack Dealers. Look for this sign in your neighborhood.



A DIVISION OF TANDY CORPORATION

PRICES MAY VARY AT INDIVIDUAL STORES



A couple takes a brief break from classes.

Nominations Open For Who's Who

41 Students To Be Eligible For Recognition

Outstanding University junior, senior and graduate students here are eligible for recognition in Who's Who Among Students in American Universities and Colleges, Dr. Gilberto de los Santos, dean of students, announced Tuesday.

"PAU students deserve high recognition every chance possible--and this represents an excellent opportunity to recognize our top students, De los Santos said. "I would like to see as many people as possible be nominated. This will insure the selection of truly deserving students."

Who's Who committee members are Dr. Gilberto Cardenas, Dr. Andres Estrada, Dr. Lino Garcia, Dr. Wilford Lee, Dr. Larry

Miller (faculty members), as well as three Pan American students.

The committee is responsible for selection of 41 students to the Who's Who program. The members "go through a lot of work" in selecting the most qualified students, said de los Santos.

Nominations may be made by individuals, student and faculty members, and departments and student organizations. Students who believe they are eligible for recognition in Who's Who, may nominate themselves as long as they have a letter of recommendation.

Committee members base their selections on students' scholarship ability, participation and leadership in academic and extra-curricular activities, citizen-

ship and service to Pan American, and potential for future leadership ability.

Students who are nominated should have at least a 3.0 GPA, and have earned at least 60 semester hours.

Deadline for submitting applications to Dr. de los Santos is Oct. 20.

The committee will announce its selections sometime in November and a special reception will be held during the fall for the honored students.

In addition to local and national publicity students chosen for the program receive, their complete biography will be presented in the 1978-79 edition of "Who's Who Among Students in American Universities and Colleges."

Validation Procedure In Works For BEOG Applicants

A validation procedure is presently underway for students who have applied for the Basic Educational Opportunity Grant.

Randomly selected students are sent a letter informing them they should produce some sort of valid financial statement such as an income tax report.

This procedure is being used so incorrect information reported on the BEOG application may be corrected.

According to Sylvia Lujan, financial aid director, the financial aid office checks for inconsistencies which may affect the student's application.

About 70 per cent of all

University students here receive financial aid in one form or another, so a large percentage of students are being reviewed.

Many college students this year failed to get their eligibility reports in on time because of the verification process. As a result, these students could not attend school. "It is assumed that this had a slight effect on the decline in enrollment, Lujan said.

There are many reasons why BEOG applications are rejected, she added.

Some of the most frequent are--Applicant did not indicate social security number.--Applicant did not indicate citizenship

status.--Amounts indicated for non-taxable income, adjusted gross income.--Income earned by parents and U.S. income tax paid appeared inconsistent.--Application was not signed by both the dependent student and parent.

When a correction of any information is needed on the Student Eligibility Report (SER) the student and his parent--if applicant is dependent--must sign the "certification statement" box on the back of the SER and resubmit it to the indicated address to have his eligibility for BEOG determined.

"Students who fill out an SER are advised to review it for accuracy and make corrections before it is submitted, Lujan said.

Deadline For Carnival Entry Extended

Preparation for one of the "bigger" occasions on campus. The Carnival of the Great Pumpkin, are already being made by University Center Program Council, the group sponsoring the event. The carnival will be held Oct. 28, 8-12 p.m. on the L.A. Building parking lot.

According to Juan Garza of the UCPC Special Events Committee, "Organizations are really trying to get into it since UCPC is giving more prize money for individual booth winners."

Already, at least ten organizations who have entered a booth in the carnival. No two booths will be the same and clubs who have had booths in previous years will get first choice on the type of booth they may enter.

Garza said this will insure more variety at the carnival.

First, second and third place prizes will be awarded to the booths by a panel of three faculty judges. The booths will be judged on originality and cleverness, construction and appearance. The booth that receives first place will win \$150, second place winner will receive \$100; and third place winner will receive \$50.

A \$10 booth fee is being charged to help with carnival expenses.

The best individual costumes will also be chosen. First place winner will receive \$50 and the second place winner will receive \$25.

A concert and disco type arrangement will be featured in the carnival's center. A horror film is also tentatively scheduled for that evening.

"It'll be possible for a club to win up to \$200 by winning first place in both the

booth and individual competition," Garza said.

The committee is also trying to arrange for the KRIO mobile unit to set up at the carnival.

Since state law prohibits gambling on campus or any state property, cash prizes cannot be allowed in games of chance. However, gift certificates, merchandise and similar prizes will be awarded.

Garza encourages organizations to "hurry and get the entries in."

"This year's carnival promises to be bigger and better than ever."

Deadline for booth entries has been extended to Oct. 12. According to Garza, people are needed to work at the carnival. Students who wish to help out may leave their name and phone number at the UCPC office.

SPORT PLAZA RAQUETBALL CLUB

721 LINDBERG

(2 Blocks Behind Strouds)

682-1597

FREE!

Present this coupon and PAU ID Card for one free hour of court time 9 am - 4 pm

(Limit 3 coupons per person) Expires Oct. 12, 1978



SPECIAL STUDENT RATES

4 Months full play \$35

Between 9 am - 4 pm \$65

(Between 9 am - 10:30 pm)

NO COURT FEE

THE SUPERIOR OIL COMPANY WILL BE ON CAMPUS

Superior is one of the largest independent oil and gas producers in the United States. We conduct exploration and production of crude oil and natural gas on and offshore in 18 of the Western and Gulf Coast States and several foreign countries.

The Company is currently in a growth phase offering training and advancement opportunities for individuals who are self-starters and have a history of achievement.

Superior offers excellent compensation and full benefits including life and medical insurance, a savings and investment plan, educational assistance, a relocation plan, a retirement plan, 10 holidays, 2 weeks of vacation and sick leave.

Contact your placement office for an appointment.

Interviewing for:

ACCOUNTANTS

The Superior Oil Company

An Equal Opportunity Employer M/F

Bronco Days Began In 50's

Preparations for "Bronco Days"--known to some as "Looney Days"--are underway. Few however know the tradition behind the annual games and contests.

The idea for the games began in the 1950's during a home basketball game between the Broncs and the Brownsville Scorpions. Because Pan American did not have a football team to celebrate a "normal" homecoming, school organizations decided to create "Bronco Days."

The Days were seen then as a way of uniting the school and breaking the monotony of students' every day life.

Last year student organizations decided on using a basketball game to center Bronco Days attention on.

"It was a great success. The gym was packed, and we're going to do it again this year," said Sam Saldivar, student association president.

Ladies Close Season

The Pan Am womens softball season is over. Word came of this Tuesday afternoon in the form of no invitation to the state tournament. Coach Kelly Bass felt the reason the lady Broncs were not selected was the early season loss of a doubleheader to Trinity 10-0 and 8-4. The women softballers ended their season with a winning record of 4-3. The wins came over Our Lady of the Lake Col-

lege 6-5 and 10-1, and over St. Mary 8-6. Pan Am finished their season on a winning note by routing Incarnate Word College 22-3. The lady Broncs play fast pitch softball and Coach Bass said pitching was of great importance to have a winning team. PAU pitchers were Noelia Villareal, 4-2 and Irene Guajardo, 0-1. Others on the squad were C-Berta Chavana, 1B-Gloria Benavidez, 2B-Velma Her-

nandez, SS-Paula Martinez, 3B- Sheryl James, LF-Cindy Trevino, CF-Josie Ayala, RF-Cindy Billescas, and in reserve were Cindy Hall and Anita Casarez. The Team's leading hitter was Sheryl James with a sizzling .690, followed closely by Berta Chavana with a fine .550. So, although the lady Broncs did not get to the playoffs, another good year has gone into the books at PAU.



Staff Photo by RIGO ORDAZ

Looking To Score

Even though this goal came up short Pan Am came out on the winning end

by a 4-0 score. This raises the soccer team record to 1-2.

Bronc Spotlight

After claiming 10 metals and high-point honors in the Senior Olympics, Charles Beaudry hopes to compete in next year's National AAU Indoor Championships at New York.

Beaudry nearly broke the world record in the 100 yard dash with an 11.2 mark that missed the record by a tenth of a second. He did break the Olympic record however.

Master's competition usually brings in runners 40 years and older to participate, but at the Olympics Beaudry ran against others his own age.

"It was very interesting competing against people my own age because sometimes I run against people 20 years younger," Beaudry said. He works out

when he can and the thing that has aided Beaudry is that he has a 300 meter track and a swimming pool at his home.

For the first time in his track career, Beaudry swam for competition and he captured three metals, one gold, one silver, and the final being bronze. He plans to swim in other meets also.

Most people read for their hobby, but Beaudry admits, "It's my hobby." This is what has kept Beaudry running for so long.

Instead of using starting blocks, Beaudry enjoys the standing start because as he puts it, "It puts me 24 inches closer to the finish line." This unique start has placed him second in the 100 yard dash in times this year. His time of 11 flat ranks behind Payton Jordan of California who ran a 10.9.

Beaudry has closed out this track season in great style, but he admits, "It was so much fun to compete with people my own age."

SPORTS

Binder Takes Reins As New Head Trainer For Pan Am

This year the PAU athletic department has made several changes. Noticable changes have occured in basketball personnel and some other intercollegiate sports have changed coaches. One change that has gone practically unnoticed is the job of head athletic trainer. The post was held for the past several years by Al Shuford. The new man at this important position is David Binder. Binder came down from the University of Texas at El Paso, where he was the assistant trainer for the two years.

Binder, who is 28, lives in Edinburg with his wife Michelle and his year-old daughter Jennifer. AT UTEP, Binder had received his bachelor's and master's degrees. He then went on to three years of high school training and one year at the Toronto Blue Jays class A team.

Binder's responsibility will cover all sports at Pan Am, and if someone should be hurt in a PE class, he will be

there to insure proper treatment. Binder will travel with the Bronc teams on the road this year. He is assisted by student trainers Jimmy Cantu, Tom Brownmiller and Roy Calvan.

Binder is happy with Pan Am and he says he has everything he needs plus there are no problems. He also says there are no

serious injuries to any Broncs in any sport at Pan Am.

So, with this man's qualifications and the ease with which he is able to communicate with players and coaches, it looks as though Pan Am has certainly found the kind of trainer they will need.



Binder



**DINING
IN A SOUTH
OF THE BORDER
ATMOSPHERE**

Taco D-lite

**1012 S. Closer
Edinburg, Texas**

Also Drive Up Window For
Fast Go Orders

383-8361



**MEXICAN
FOODS**

**WHITE FLOUR
PATOS**

Try'em - You'll love em.

For faster service
call order in.

McAllen:
Corner of 23rd & Pinar
682-3176
AND
HWY. 83 AT 12TH ST.
687-8269

Edinburg:
Across from PAU
383-0725

Mission:
Hwy. 83 & Bryan Rd.
585-4542

Opening Soon
in Harlingen

KEN'S PIZZAFREEEA!

**Buy one,
get one free.**

ken's
we keep topping
ourselves.

two for one

Clip this coupon, redeem at any participating Ken's Pizza Parlor, and receive a **FREE** pizza when you buy another of equal value.

Expires October 19, 1978

OFFER GOOD MONDAY THROUGH THURSDAY ONLY.

ken's
we keep topping
ourselves.

McALLEN	PHARR	BROWNSVILLE
500 N. 10	1005 E. Hwy. 83	2489 Boca Chica
682-5581	787-8534	546-1614

Firestone

TIRE CLEARANCE

Great Tire Deals! Come On In!
DISCONTINUED DESIGNS, BLEMS,

HURRY... QUANTITIES ARE LIMITED!
Not all types available at all locations.

WOW! WHAT A DEAL!

CHAMPION™ Polyester Cord Tires

<p>4 for \$50⁰⁰</p> <p>600x13 Blackwalls Plus 1.50 F.E.T. each</p>	<p>4 for \$58⁰⁰</p> <p>650x13 blackwall Plus 1.64 F.E.T. each</p>	<p>4 for \$70⁰⁰</p> <p>560x15 Blackwall Plus 1.61 F.E.T. each</p>
WHITEWALLS ADD \$3.00 EACH		



AN ECONOMY BUY! WOW!

Strato-Streak® Sup-R-Belt™

EXCITING LOW PRICES!

<p>Size B78-13 \$21</p> <p>Plus \$1.80 F.E.T.</p>	<p>Size F78-14 \$25</p> <p>Plus \$2.42 F.E.T.</p>
<p>Size G78-16 \$28</p> <p>Plus \$2.58 F.E.T.</p>	<p>Size G78-15 \$28</p> <p>Plus \$2.65 F.E.T.</p>

Double Belted Whitewalls

Size H78-15

\$34

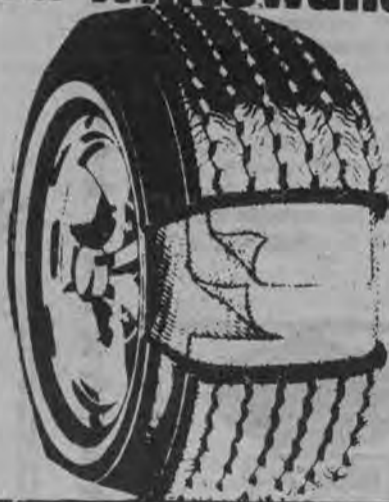
Plus \$2.88 F.E.T.
All prices plus tax and old tire.

Two tough fiberglass belts under the tread and two polyester cord body plies for easy handling and a smooth quiet ride.

CHARGE 'EM!
Open an account

We also honor: • Bank Americard
• Master Charge • Diners Club
• American Express • Carte Blanche

FREE MOUNTING
of your Firestone tire purchase



STEEL-BELTED
RADIAL V-1™ WHITEWALLS
FACTORY APPEARANCE BLEMISH

IMPACT STRENGTH
U.S. Department of Transportation tests require a tire with stand 2000 lbs. pounds on an inch steel wheel test. These Firestone Steel-Belted Radial V-1 Tires tested with shock over 3000 lbs. pounds without rupturing.

SMOOTH, QUIET RIDE
All highway roads the difference in ride is remarkable. The rest of small road shocks almost disappear.

LONG MILEAGE
Special construction provides extra tread life. The extra tread life is due to the extra tread life.

EXTRA TRACTION
Wide tread design, 3 1/2 European tread with thousands of road gripping sipes puts you prominently "in" more rubber on the road than our same size tires. The equipment tested for extra wet traction on wet or icy pavement.

AS LOW AS
\$34⁰⁰
Size B78-13
Plus \$2.20 F.E.T.

Size E78-14 (fits E78-14 or 185R-14)	Size F78-14 (fits F78-14 or 195R-14)	Size G78-14 (fits G78-14 or 205R-14)	Size H78-14 (fits H78-14 or 215R-14)	Size J78-14 (fits J78-14 or 225R-14)	Size K78-14 (fits K78-14 or 235R-14)	Size L78-14 (fits L78-14 or 245R-14)	Size M78-14 (fits M78-14 or 255R-14)	Size N78-14 (fits N78-14 or 265R-14)	Size O78-14 (fits O78-14 or 275R-14)	Size P78-14 (fits P78-14 or 285R-14)	Size Q78-14 (fits Q78-14 or 295R-14)	Size R78-14 (fits R78-14 or 305R-14)	Size S78-14 (fits S78-14 or 315R-14)	Size T78-14 (fits T78-14 or 325R-14)	Size U78-14 (fits U78-14 or 335R-14)	Size V78-14 (fits V78-14 or 345R-14)	Size W78-14 (fits W78-14 or 355R-14)	Size X78-14 (fits X78-14 or 365R-14)	Size Y78-14 (fits Y78-14 or 375R-14)	Size Z78-14 (fits Z78-14 or 385R-14)
\$44	\$47	\$49	\$53	\$51	\$54	\$56	\$59													

Firestone RETREADS



4 FOR \$44⁰⁰

ANY SIZE LISTED
560-15, 670-14, 670-13, 695-14, BLACKWALLS PLUS 34c in 43c FET EXP AND 4 RECAPABLE TIRES OFF YOUR CAR. ADD \$3.00 PER TIRE IF TRADE-IN NOT RECAPABLE WHITEWALLS AND \$1.30 PER TIRE.

\$16⁰⁰ Blackwall size F.G. H78-14, 15
Plus 43c to 52c Fed. Tax Exp. and old tire off your car.

\$18⁰⁰ Blackwall size J-78-14, 15 L78-15
plus 53c to 55c Fed Tax exp and old tire off your car.

WHITEWALLS ADD \$2 PER TIRE ON LARGER SIZES

FRIDAY & SATURDAY ONLY
EDINBURG
118 N. 12th 383-5324

Newsbits

(Cont.)

ISA To Meet

The International Students' Association will meet today during activity period in LA 105. "More people are coming to the meetings but ISA always welcomes more points of view," said to Alda Lizcano, club spokeswoman.

Fun Run Is Tuesday

The Health and PE Club will sponsor a Fun Run Tuesday during activity period. This is an event to which all interested persons are invited for a run around the campus. It will start at the old gym.

HEP Jobs Open

The High School Equivalency Program is taking applications for a grammar tutor aide (15 hrs per week) and an office aide (20 hrs per week). Starting salary is \$2.65 an hour. Office aide should be able to type 40 wpm. Application may be made with the secretary in Emilia Hall, room 207.

Ecologists Gather

The Louis Agassiz Natural History Society will meet October 10 in room 101 of the Science Building during Activity Period. Anyone interested in ecology and conservation work are welcome to attend.

Fun Run Is Tuesday

The Health and PE Club will sponsor a Fun Run Tuesday during activity period. This is an event to which all interested persons are invited for a run around the campus. It will start at the old gym.

AAUW Sponsors Book Sale

The Edinburg branch of the American Association of University Women will sponsor a "used book sale" in front of the First State Bank in downtown Edinburg, beginning at 10 a.m. and continuing all day, Oct. 7. Proceeds from the sale of the bargain-priced books will go to the AAUW Educational Foundation to be used for scholarships, fellowships, research and project games.

Swimmers To Meet

An organizational meeting for all persons interested in synchronized swimming has been called for October 10 during activity period at the swimming pool. For more information see Susie Houston in room 119 of the Physical Education Complex or Beth Dibnah at the women's dorm, or call 381-3501.

Clubs Conduct Registration

Students who have not registered to vote may still do so. Voter registration is Sept. 9 thru Oct. 6. The Young Democrats will have tables in front of the Snack Bar and the LRC. Also, the Young Republicans will have a table in front of the Liberal Arts building. Both parties are making a joint effort to register voters here on campus. The Veterans Club also has a booth located in office building D. All you need to do to register is to go by one of these locations and fill out a voter registration card and drop it in the mail. In order to vote in November you must be registered 30 days before the election.

Al Pacino Film at LA

The University Center Program Council presents "Dog Day Afternoon," Sunday, Oct. 8, at 8 p.m., in the Liberal Arts auditorium. Al Pacino stars as Sonny, a man who becomes confused and frantic about his tattered life. The carefully constructed portrait of an actual person comes to life when Sonny decides to solve his problems by staging a bank robbery with a friend. Admission will be \$1 at the door.

The Pan American

Weekly Student Newspaper

EDINBURG, TEXAS

THURSDAY, OCTOBER 10, 1978

Vol. XXVIII No. 5

Officials Concerned Over 5,000 Who Didn't Register

During the present semester 14,000 persons were accepted as students at Pan Am and sent registration appointments, but only a little less than 9,000 registered.

The University Division of Student Affairs, headed by Vice President Mike Nevarez, is concerned about the fate of the 5,000 persons who received packets but choose not to register.

Generally the University has found that about 80 per cent of those students accepted to register. This year that figure fell to a little more than 60 per cent.

Dr. David Alvarez, dean of the School of Social Sciences, is directing a telephone survey of 800 students, a 20 per cent

statistical cross section of the 5,000 no-show students.

Dr. Alvarez has advanced several theories to explain the drop. He believes the majority of the 5,000 non registering students are parttime students.

But the purpose of the survey is to find if the University is responsible in any way for the failure of these students to register and if so to find what can be done to correct the situation.

Registration procedures, personnel, financial and work-related problems, the open door admission policy, students transferring to other universities and the indecisiveness of today's college students are some of the reasons being con-

sidered.

Dr. Alvarez said he believes Pan Am is serving a community college function in the Valley. Many students just want to get a taste of college but are not interested in completing a degree.

In the final analysis there may not be anything unusual about this high loss of students, those concerned say, but they intend to use the survey to be sure it is not the fault of the University that the students did not register.

The survey is expected to be completed in about two weeks and tabulation of the results, which will take longer, will begin.

Program Hopes To Identify Potential Dropouts

By CYNTHIA GARCIA

An Intrusive Counseling Program, designed by Learning Assistance Center Staff to increase student retention, began this week in an experimental form.

The 12-week experimental program is being conducted to determine "best" procedures for implementation on a larger scale.

Officials here have learned over recent years many of Pan American freshmen and sophomores do not return to school.

Goal of the program's counselors is to identify potential dropouts and respond to their needs before those students have left school.

A total of 100 students (each) from developmental reading, math and English classes are involved with the program.

Instructors of these classes plan to compile weekly class rolls, indicating those students who fail in attendance, motivation and producing quality work.

Counseling service and instructors will "intrude" in the

progress or lack of progress of these students, according to Earl Frankenberger, LAC director.

Under the new program counselors will contact and work with the instructors. Instructors will contact and help the students.

Frankenberger said he believes that students who fail to attend classes, an consequently drop out of school entirely, do so because they have difficulty reading. "They have personal and financial problems and they can't adjust well to the social life they have in college," he said.

Plans are for the Intrusive Counseling Program to determine students in the program have problems in all or just a single class. Another objective is to estimate the number of students who are dropping their classes.

The program will continue if the experimental phase is deemed successful. If it is, it will be expanded to include 500 students.



Staff Photo by RIGO ORDAZ

U.S. Rep. Bob Krueger gestures while making remarks to a University Center Circle crowd here Monday. An estimated 300 to 400 heard Krueger, who is running for the U.S. senate seat held by John

Tower. The congressman's visit was part of a busy "helicopter whistlestop tour" that saw him campaign in eight other Texas cities Monday.

Student Teaching Deadline Nears

University students wishing to do student teaching for the spring semester must submit applications to the student teaching office by Oct. 23, according to Nolan Wood, director of student teaching.

Students accepted to do student teaching are required to have at least 90 semester hours of college work completed, at least a three-fourths semester hours completed in a major with a 2.25 or better grade point average; and at least one-half semester hours com-

pleted in a minor with at least a GPA of 2.25.

Also, students must have all general education courses completed. Freshmen English courses must be completed with at least a "C" average. Additional requirements will be specified by the department of the students major field.

Along with the application, applicants must have an up-to-date unofficial transcript and a copy of their degree plan, Dr. Wood said. Application forms may be picked up in the Education Building, room 116.

Listening

Facial expressions of those who heard U.S. Rep. Bob Krueger Monday are varied in this photograph taken by staff photographer Rigo Ordaz. Throughout his speech, Krueger blasted Tower for claiming friendship with Hispanic Americans—especially in South Texas.



Also Inside

● Newsbits, see page 8

Quotes

Editor's note: "Quotes," a new feature, makes its second appearance, after debuting in last week's issue. Compiled by staffer Leticia Diaz, "Quotes" includes excerpts from brief interviews with students who are selected at random. The Pan American reserves the right to edit.



Garcia



Vega

I like something challenging," she said.

She is Debbie Garcia, a sophomore from McAllen majoring in elementary education. Her hobby is sports, including tennis, basketball, running, and "anything outside."

What were your first impressions of the Valley?

"I lived in San Antonio for most of my years, but I moved to the Valley because my father was transferred. The first difference I noticed was the large classes. In the all-girls high school I attended, there were at least six to eight students in a class; so I really can't compare it to the classes here."

What improvements if any, should be made in the University?

"I feel there should be more subjects a student can take. There is just not enough. And for sure, more majors and minors. Another problem that should be cleared up is registration. It's just totally unorganized."

How about the students? Is there any difference in the students from here and the students from San Antonio?

"Here at Pan Am, you don't have as many good friends, because everyone is separated into different cities.

"I enjoy writing songs and poems. And if I just don't like the poem or song I'm writing, I never finish it."

David Vega, a freshman pre-med major from Pharr, said he is trying to be his own individual self because he doesn't want to follow the crowd.

Why did you choose Pan Am

"I heard a lot about the University and I knew some successful graduates, so I decided to try it out for a year and if I liked it I would stay here the full four years."

What improvements if any, do you feel the University needs?

"It seems nice the way it is. I like it."

What do you think is "good" about the University?

"There is a lot of free advantages for students such as student tutoring and other facilities."

Who influenced your life the most?

"I would have to say my mother. She convinced me to come to school to give it a try."

Are you active on campus?

"Yes. I am presently in the College Assistant Program. Last year I was their president."

COMMENTARY

To the Editor

One of the deficiencies noted in "Quotes," last issue, is "spirit and student." I really hope I'm wrong, but I believe that, conversely, we have an abundance of apathy. If it were a measureable quantity, PAU's apathy level would probably qualify it for Guinness as having the most apathetic student body--or being the most apathetic group of people--anywhere.

Your notice soliciting letters from readers is a measure of student involvement on this campus. Doesn't anyone have an opinion on anything that they can express without coaxing?

Another measure, I believe, is the lack of enrollment in free courses at the LAC, causing them to be cancelled. (One cancelled course was Decision Making. Therein must be irony, somewhere.) Are students too concerned with getting

To the editor:

I am a young Ahanian student interested in Americanism and as a result, I would like to get in touch with American students to correspond with and exchange ideas.

Please in view of this circumstances, I would like to appeal to you to publish my name above in your weekly, magazine or bulletin in order that I may get access to American Students to correspond with.

that piece of wallpaper to bother with non-credit courses--or are they too apathetic? Why did two-thirds of the students avoid having their picture taken for the yearbook? Shyness?

With its beautiful campus and excellent faculty, Pan American can nevertheless be improved. It is strongly administration-oriented, but only because the students are willing to settle for mediocrity is it not student oriented.

Yours for an involved student body,

Courtney D. Wood
Management Major
Edinburg

Please, I sincerely promise to reply any letter I may get in respect of my request. I am looking forward to hearing you soon. Thank you for your cooperation.

Yours faithfully,
Martin Asante Oti-Mensah
P.O. Box 144
Ahona Swedru, central region,
Ahana (West Africa)

Writer Believes Room Left For Woman

By LETICIA DIAZ
Staff Reporter

"Every man wants to be a macho, macho man. To have a strong body--always in demand. Jogging in the morning--go man, go. Workout in the health spa--muscles glow. You can best believe that he's a macho man."

Today's women seem to be demanding more and more equality. What most of them strive for is to get rid of a "macho" world that has left women in an uncompetitive race.

Within years, females have moved up in society.

Now women are doctors, lawyers, electricians, phone installers and construction workers. They're even running for political offices.

But at the present time these questions are being asked: Why shouldn't women get paid equally as men if the job is the same? Why can't women be presidents instead of secretaries to presidents? Why has society punished women for being women?

Fortunately women have outstanding strength and do achieve their ultimate goals.

What was once thought to be woman's weakest spot is perhaps no longer, according to an army recruiter in McAllen. Sgt. Jose Ovalle believes local women are signing up for the army for these several reasons. Many job opportunities are becoming available to them, ranging from mechanics to communications, from medical to administration. A total of 75 percent of women who join finish college in the army.

Women are also in it for the travel. Although they have their choice of training stations, most choose an overseas site.

What about boot camp? Approximately 99 per cent inquire about boot camp, Ovalle said. Boot camp is no longer for males only. There is now a co-ed boot camp and "girls seem to come out

better in most cases concerning physical ends," he said.

So what are their women doing then?

According to a spokesman from the Texas Employment Commission Office in McAllen, of all the women employed in Hidalgo County, 29,815 are in the labor force; 25,503 are employed elsewhere; and 4,313 are unemployed--a ratio of 14.5 per cent.

The figures were recorded in the 1970 census report.

The familiar saying, "A woman's place is in the home," scarcely exist today. Raising a family and earning a career have become equally important to the female.

Males, move aside. There is plenty of room for a successful career woman.

Calendar

- Oct. 12**
UCPC 10:25-11:35 a.m. Ballroom
UCPC 10-11:35 a.m. UC 303
Placement Marine Corp. 8:30 a.m.-3 p.m. Snack Bar
Pres. Leadership Scholar. 10-11 a.m. Ballroom
Drama Department 4:30-6 p.m. UC 307A
ISA 10:25-11:30 a.m. LA 105
Young Democrats 10:30-11:30 a.m. LA 115
PAUSA 9 a.m.-6 p.m. M. Dorms
- Oct. 13**
GED Testing 7:45 a.m.-4:15 p.m. UC 306-306A
SNEA Membership Drive 8 a.m.-4 p.m. Snack Bar
- Oct. 15**
APO 6:30-8 p.m. UC 305-305A
Ladies of Camelot 4 p.m.-6:30 p.m. UC 306
- Oct. 16**
KD's 6:30-8 p.m. UC 305-305A
Kappa Sigma 6:30-9 p.m. UC 306A
DZ's 5-9 p.m.
DZ's Pledge 7-9 p.m. UC 307A
Phi Kappa Theta 6:30-9 p.m. UC 306
UCPC Chess Tournament Noon-4 p.m. Ballroom
- Oct. 17**
APO 10:25-11:35 a.m. UC 305
Intervarsity 10:25-11:35 a.m. UC 305A
- Oct. 18**
CLEP Testing Placement 7:45 a.m.-4:15 p.m. UC 306-306A
IK's 6-10 p.m. UC 305-305A
Kappa Delta 6:30-10 p.m. 307-307A
Chess Tournament Noon-4 p.m. Ballroom
AAUW Workshop 6-11 p.m. Ballroom
- Oct. 19**
ISA 10:25-11:25 a.m. LA 105
Demo, 10:30-11:30 a.m. LA 115
Employment Council 10:30-11:30 a.m. UC 305A
Inter. Frat. Council 10:25-11:30 a.m. UC 306
Chess Tournament Noon-4 p.m. UC 307-307A
School of Business Luncheon 12:30-1:30 p.m. Ballroom
UCPC 10:35-11:35 a.m. UC 303
TKES 10:25-11:25 a.m. UC 306A
- Oct. 20**
Vet's 10:25-11:35 a.m. UC 306
El Sol 10:25-11:35 a.m. UC 307
Chess Tournament Noon-4 p.m. Ballroom
Ladies of Camelot 5-7 p.m. UC 306-306A
Amer. Chem. Society 10:30-11:30 a.m. SB 3
CSO 10:25-11:35 a.m. UC 306A
UCPC Dance 6:30-12 p.m. Ballroom
UCPC Ticket Sales 10 a.m.-Noon Circle

Counseling Services Available

If you have problems with your family, or with dating, identity or friends there is a place on campus that offers counseling service in both individual and group counseling.

The Learning Assistance Center, housed in Office Building G is focusing on promoting student growth along a broad spectrum with particular emphasis on personal characteristics and interpersonal competencies. The following groups are

being offered: assertion training, communication skills, decision making, premarital dating, courtship, relaxation techniques, self-awareness, and value clarification.

For additional information or referrals students may contact Lupita Cantu, Santiago Silva, Mike Ryan, Oscar Garcia, and Ricardo Rodriguez at 381-3121 or 381-3122. Regular hours are 7:45 a.m. - 4:15 p.m.

Pan American Classified Ads

FOR SALE: 1969 Pontiac Catalina. Good Condition--No Rust! \$600. Call 383-0413 after 5:00 and weekends.

HELP WANTED-PART TIME: Name your own hours, training class, materials supplied. For more details or interview, write or call TIARA EXCLUSIVES, P.O. Box 204, Weslaco, TX 78596 or 968-6389. Collect calls accepted. R.T. Bookout.

Part time jobs available with full time pay. Interested in 6 or more girls. For more information call 383-0439.

DIAMOND ENGAGEMENT & WEDDING RINGS: Up to 50% discount to students, faculty & staff. Example. 1/4 ct. \$150.

1/2 ct. \$350. 1 ct. \$995, by buying direct from leading diamond cutter. For color catalog send \$1 to SMA Diamond Importers, Inc., Box 42, Fenwood, N.J. 07023 (indicate name of school) or call (212) 682-3390 for location of showroom nearest you.

CONTACT LENS WEARERS: Save on brand name hard and soft lens supplies. Send for free illustrated catalog. Contact Lens Supplies, Box 7453, Phoenix, AZ 85011

Classified rate is 20 cents a line with a minimum of \$1 for each insertion, payable in advance. Bring ad copy to The Pan American, Emilia Hall 100. Deadline is Friday noon. To estimate cost count 25 letters and spaces to a line.

The Pan American

- News Editor: Juan Canales
- Staff Reporter: Leticia Diaz
- Staff Reporter: Cynthia Garcia
- Desk Assistant: Estelinda Alvarez
- Sports Editor: Linda Brown
- Sports: Oscar Garcia
- Staff Photographer: Terry Welby
- Staff Photographer: Rigo Ordaz
- Advertising Manager: George Villareal
- Circulation Manager: Phyllis Pricoli
- Adviser: Joe Mangin
- Adviser: Harry Quin

The Pan American student newspaper at Pan American University published by Student Publications, Emilia Hall 100, phone 381-2541, at Edinburg Texas 78539, each Thursday except during examinations and holidays under Dr. Mike Nevers, vice president for student and university affairs, and Harry Quin, advisor. Views presented are those of students and do not necessarily reflect those of the University administration. Subscription price by mail, \$3 a year, \$1.50 per semester. Contributions and letters should be submitted by Friday before publication.

New Phone System Called Convenient

Rapid growth has for the past few years been synonymous with the University.

That rapid growth is reflected in a new phone system recently installed on campus.

The cut-over from old Centrex lines to the new system--called dimension 2000--was made last summer.

Director of Purchasing, Sam Odstrcil, said the biggest asset of the new system is the cost savings to the University.

Another of the many advantages is extended phone coverage. Under the old centrex lines, only a few select faculty members had phone extensions, said Odstrcil. Dimension 2000 provides all with a telephone.

The call-pick up is another feature. If a phone rings in an outer office, the call can

be answered from one of the inner offices. Dimension 2000 also provides an automatic call-back. When there's a busy line, campus phones can be programmed to let the caller know when the line is free.

Ostrcil said most of the problems with the system, so far, originate with the city and not the University.

"We're working with a Cadillac on campus, and Model-T equipment downtown," quipped Odstrcil. Edinburg remains on the old centrex lines, and is the cause of most of the interrupted calls, misdials and other problems, he said.

Some faculty members still do not fully understand the new system, Odstrcil added, and that causes still more problems. But Odstrcil said, for the most part, the new Dimension 2000 phone system is working out beautifully.



Organizers recently met to discuss plans for an Oct. 18 workshop on the "Changing Role of Women in the Political Process." Pictured are right to left, seated, Gloria Bliss Moore, Edna B. Villar, Ruth

Bartley and Patsy Gayken. Standing, Dr. Elizabeth Gratz, Dr. Lillian Noyes, workshop co-chair, Dr. Marian Monta and Dr. J.C. Nichols.

STAFF PHOTO BY JORGE VILLARREAL



Congressman Krueger and aides depart from west-side campus grounds.

Krueger can be seen waving to part of a large crowd, which unaccustomed to seeing helicopters on grounds they tread upon daily, watched with interest.

Besides Pan American, the copter touched down in eight other South Texas cities.

Debate To Include Representatives From 3 Parties

El Sol and the Political Science Association two student organizations will sponsor a political debate between representatives of the Raza Unida, Republican, and Democrat parties, according to spokespersons of both clubs.

A county level official and student representative from each party plan to discuss key issues in the upcoming Nov. 7 election.

The debate is scheduled Oct. 19, during activity period, at the LA. Auditorium.

The debate will mark the first time all three parties will participate in similar function in the Valley. Issues to be discussed include party platforms, education, energy, state spending, taxation, minority issues and labor legislation.

Representatives from each party will be allowed equal time to present their

views. The audience will also be allowed to ask questions of panel members.

Students, staff, and faculty have been invited to attend and participate.

Mail Error Leaves Proofs At Publications

Due to an error in the mail, a total of 33 El Bronco senior portrait proofs have been sent to Student Publications, Emilia Hall 100.

Those listed below may pick up the proofs from 8 a.m.-4:30 p.m.

Seniors and faculty members who already have received proofs are urged to return them to Delma Studios in New York City. Designation for yearbook pose should be made even if a picture packet is not purchased.

The following have proofs at the Student Publications office: G. Barbe, L. Calderon, M. Castillo, F. J. Chapa, E. Cruz, H. Cruz, N. Cruz, J. Flores, S. Flores, M. C. Gallegos, Y. Galvan and A. Garcia.

Also: G. Garica, R. R. Garcia, N. Garza, P. Garza, J. Guzman, L. Hinojosa, Y. Lee, O. Palacios, Z. Perez, M. Pizzano, J. Reed, T. Saenz, R. Spain, J. Spruiel, M. Thomas, S. Villareal, V. Weckbacher, S. Wheat, Y. Willinghamman, C. Wood and E. J. Zamora.

"The world's great men have not commonly been great scholars, nor its great scholars great men."
—Oliver Wendell Holmes

LITTLE TOTS NURSERY & PRE-SCHOOL
\$23.50 per week
BREAKFAST, HOT LUNCH TWO SNACKS
HOURS 6:30 A.M. - 6 P.M.
383-8221
204 E. Stubbs Edinburg

ASTROLOGY

University graduate, 27; would like to meet Gemini, Cancer, Leo, Scorpio, Aquarius, & Pisces girls 19 to 27 (5'4" or taller).

Robert Robles
P.O. Box 331
Weslaco, Texas
78596

PREGNANT NEED HELP?
CALL Pregnancy Information San Antonio 828-9316

Attention Athletes
Order your personalized college ring today.
T & G Enterprises
2201 N. 10th McAllen, Texas
887-5442
All Sports Every Position

Shoes Sportique
2110 North Tenth Shopping Center McAllen, Texas 482-7151
VISA MasterCard

"Comedy Of Errors" Is Second Theatre Production

Laugh-Filled Farce Begins Run

"The Comedy of Errors," a famous laugh-filled farce about mistaken identities by the immortal William Shakespeare, will be presented Oct. 12-14 at the Media Theatre as the second production of Pan American University Theatre's 1978-79 season.

The play is being restaged from its popular PASS run for the American College Theatre Festival being held in Huntsville Oct. 19-21. Audiences who missed the riotous comedy and those who saw it this past summer will enjoy this revival.

"If you come to the Media Theatre and feel that you have seen the plot somewhere else, do not become confused yet," says Marian Monta, the play's director. "The script was borrowed (or stolen) from Plautus' 'The Menaechmi' which was presented for PASS audiences in 1977. And, if you really enjoy the plot, it will be presented again next year in 'The Boys from Syracuse' by modern playwrights Rodgers and Hart. We are presenting the three shows in successive seasons to show how a very great ancient play can be adapted and fit any age of history."

If the presentation of the cycle of the three plays confuses

anyone, patrons should just wait until the audience views the complex production and sees every bit of confusion, chaos and fun come to life on the stage. Basically the comic plot revolves around the search by Antipholus of Syracuse (played by Kent Smither) and his servant Dromio (played by Ricky Salinas) for their twin brothers in Ephesus.

Unknown to Antipholus and Dromio of Syracuse, their twin brothers are living in Ephesus and to complicate matters worse, they have the Same Names. Antipholus of Ephesus (Played by Mark Servis) has taken a wife, Adriana (played by Chris Herrera) and has employed Dromio of Ephesus (played by Mayo Caceres) as his servant.

This is the point at which all the trouble begins. Everyone starts confusing the twins with each other and the twins themselves become concerned about their identities.

Throughout this laugh-riddled plot both sets of twins encounter various characters that add to the confusion. These include Solinus (played by Keith Bodenhamer); Egeon (played by Jack Strawn); Balthazar, the first and second merchants (all played by versatile **Debby Thomas**); Angelo

(played by Any Eindauf), Pinch (played by Roy Cruz); Emilia (played by Bettye McAnear); Luciana (played by Linda Noble); Luce (played by Kitty Bodenhamer); the Courtesan (played by Tina Adkins); the officer (played by Dr. Glenn Newman); and the Proteans played by Randy Woods, Kay Copold and Juan Arriola.

As they carry on dialogue with these various characters, insane moments occur and the audience is left with a delightfully confused evening of entertainment. But never fear, Shakespeare unravels the plot very carefully and the confusion is over with the final curtain.

The intricate play is skillfully directed by Marian Monta, with various settings for the production designed by James A. Hawley.

"The Comedy of Errors" will also be presented for Valley school teachers and students in four special matinee performances, Oct. 25 and 26 in the Fine Arts Auditorium. Tickets and information for both evening, and matinee performances may be obtained by calling the Communications Department at 381-3581.

LRC Has Variety of Materials

The Learning Resource Center, LRC, has a large variety of print and non-print materials to aid University students, faculty, administrators and the community.

The LRC is the large four-story building located in the center of the campus.

The building is divided into two parts: the library, is housed on the west side, and the media services on the east side. The library is open Monday-Thursday from 7:45 a.m.-10:30 p.m.; Friday from 7:45 a.m.-5:30 p.m.; Saturday from 8 a.m.-5 p.m.; and Sunday from 2 p.m.-10 p.m.

On the first floor there is a large lobby, often used as a gallery to display a variety of materials. The media administration offices, non-

print circulation desk and usage area, preview room, group study rooms, typing room, learning and listening laboratories, library circulation desk and reserve book room are also located on the first floor.

The second floor is the "nerve center" of the library. The library administration offices, reference department, main card catalog, indexes to all library materials, pamphlet file, U.S. and foreign telephone book collection and map collection are all located on this floor.

The library also has a new addition to its collection of aids for students. This new aid is called a COM Terminal. Two of them are located on the second floor.

On these terminals, a stu-

dent can find out what books are available in the public libraries in Donna, Edinburg, Elsa, McAllen, Mercedes, Mission, Pharr and Weslaco. After filling out a form, the student can request a book from any of these libraries and it will be sent to the LRC.

The third floor of the library houses periodicals, microforms, government documents, and archives. There are also microform readers and reader-printers on this floor. Indexes are available to the microform collections.

All of the circulating collection books are on the fourth floor. The juvenile collection, oversized books, and fiction books are also located on this floor.



Jeanne Tower, second from left, visited Pan American recently where she spoke to students at a press conference. Tower is the daughter of U.S. Sen. John Tower, running for reelection

against U.S. Rep. Bob Krueger. Pictured with Tower are students Robert Bettauer, Mike Fyle, and Terry Welty. Student as far right is unidentified.

Workshop To Explore Women's Party

Ernestine Glossbrenner of Alice, Democratic Texas House District 58 candidate and present incumbent, will participate in the workshop, "Changing Role of Women in the Political Process: Party Roles," on Wednesday Oct. 18 at 7:30 p.m. in the PAU Ballroom.

The program, under auspices of the Edinburg AAUW Branch, is being co-sponsored by PAU School of Social Sciences and Edinburg-McAllen League of Women Voters. Edi Brees of Bayview,

Republican candidate for Texas House District 50, will be the other workshop participant.

Ada Duarte, Brownsville, immediate past state executive committeewoman for Democrats, and Peggy Rodgers of Edinburg, present state committeewoman for Republicans, will represent the role of party officers.

The public is invited to the workshop, the first in the series, **Studies About**

Women IV: Changing Role of Woman. The series is jointly presented by Pan American University and the Edinburg Branch of American Association of University Women.

2 Art Shows To Be Exhibited

Two one-man art shows at Pan American will be on exhibit at the Learning Resource Center this month.

A Harlingen senior, Lupe Vasquez, will present his exhibit, "Heritage of the Valley," Oct. 16-20 at the LRC during regular hours.

His show will consist of ceramics, paintings, drawings in mixed media and photographs.

Another art student, Adolfo Martinez from Kansas City, Missouri, will present his exhibit, Oct. 23-27.

Martinez, here on an art scholarship, will present drawings, surrealistics, paintings and works depicting ancient mayan/culture exhibit.

Lima, Peru Presentation Scheduled

A lecture and slide presentation on squatter settlements, urbanization and politics in Lima, Peru will be delivered Oct. 16 in LA 312 by Professor Henry Dietz, of the Institute of Latin American Studies at the University of Texas at Austin.

Dietz will be on campus all day recruiting for the ILAS masters program, according

to Dr. Gary Mounce, political science professor here. Interested faculty members, students, administrators and community residents have been invited to attend the presentation by Dietz, Mounce said.

Those wishing more information about Dietz's visit may check with Mounce in LA 363, or with the Inter-American Office.

SPORT PLAZA
RACQUETBALL CLUB
 721 Lindberg
 McAllen
 (2 Blocks Behind Strouds)
 682-1597
FREE!
 Present this coupon and PAU ID Card for one free hour of court time 9 am - 4 pm (limit 3 coupons per person)
 Expires Oct. 26, 1978

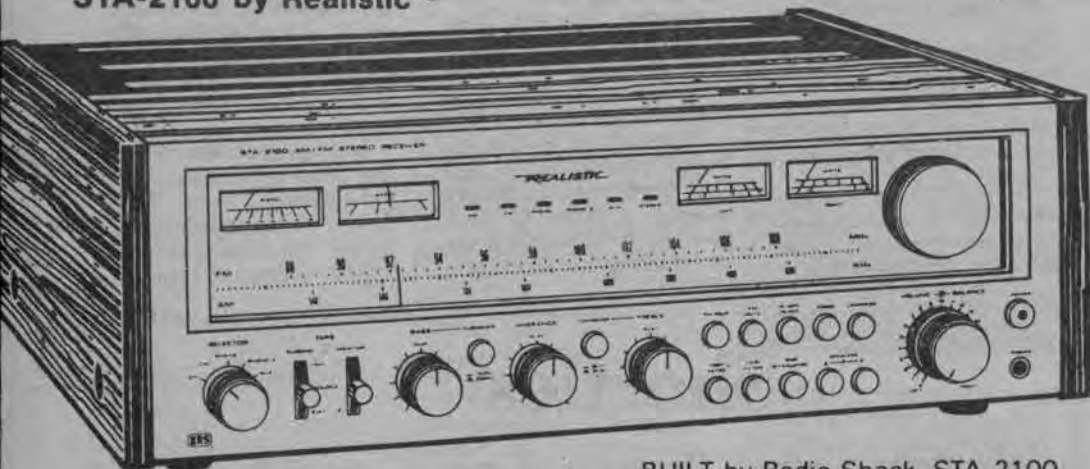
SPECIAL STUDENT RATES
 4 Months full play \$35
 Between 9 am - 4 pm \$65
 (Between 9 am - 10:30 pm)
NO COURT FEE

ONE - DAY SERVICE KODACOLOR II OR FREE ROLL FILM
 MONDAY THRU THURSDAY
GUARANTEED ONLY BY BRITTON'S PHOTO DEALERS VALLEYWIDE
 SEE YOUR PICTURES TOMORROW

DOLLIE B's BEAUTY SALON
 1611 W. UNIVERSITY DR. EDINBURG, TEXAS
 383-4282
 WED., THURS., FRI., SAT.

Radio Shack®

120 WATTS-PER-CHANNEL RECEIVER*
STA-2100 by Realistic®

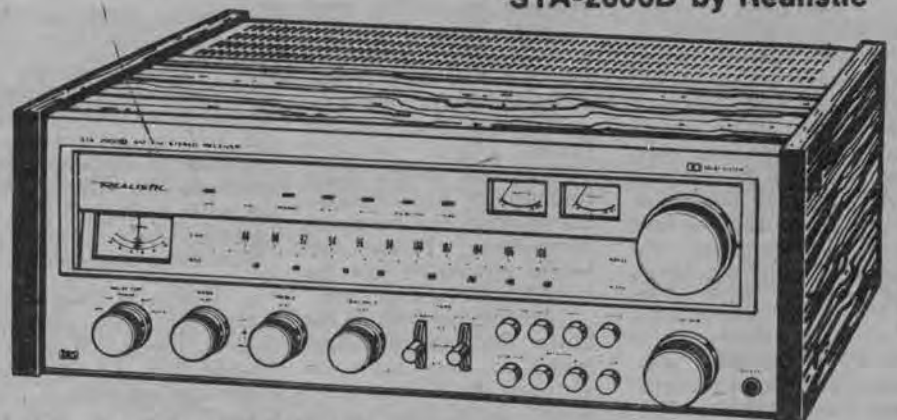


599⁹⁵

BUILT by Radio Shack, STA-2100 is our finest-ever audio component. Quality so superb it has won the acclaim of pianist/conductor Peter Nero. *120 watts per channel, minimum RMS at 8 ohms from 20-20,000 Hz. with no more than 0.1% THD. A proud receiver at a Realistic price! 31-2076

HI-FI HI-POWER® SYSTEM SALE

75 WATTS-PER-CHANNEL RECEIVER*
STA-2000D by Realistic



We added Dolby† FM to the built-by-Shack™ STA-2000 to make it better! Acclaimed by both *High Fidelity* and *Audio Magazines*, it's a powerful *75 watts per channel, minimum RMS at 8 ohms from 20-20,000 Hz, with no more than 0.18 THD. 31-2084

499⁹⁵

†TM Dolby Labs., Inc.

SAVE ON AN STA-2100 SYSTEM

Reg. Separate
Items Price
1299⁸⁰

\$1150
SAVE 149⁸⁰

- Realistic STA-2100 AM/FM Stereo Receiver
- Two Optimus® T-200 "Tower Design" Floor Speakers with Two Woofers, Mid-Range, Tweeter, Walnut Veneer Cabinet
- LAB-65 Multi-play Turntable with Base, Dust Cover, \$29.95-Value Realistic/Shure Magnetic Cartridge

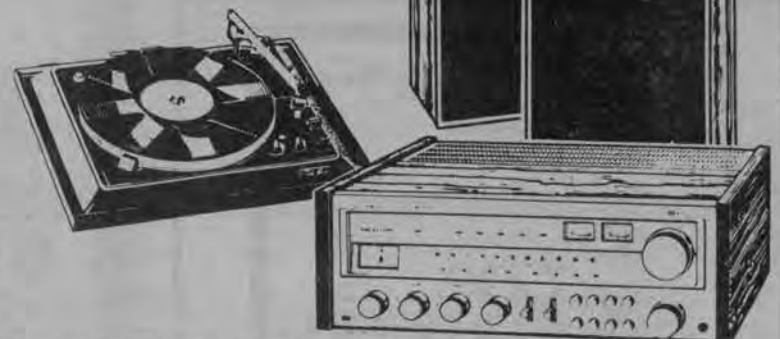


SAVE! STA-2000D SYSTEM

Reg. Separate
Items Price
1069⁸⁰

\$950
SAVE 119⁸⁰

- Realistic STA-2000D AM/FM Stereo Receiver
- Two Mach-One® Floor Speakers in Walnut Veneer Cases
- LAB-200 Multi-play Turntable with Base, Dust Cover, \$29.95-Value Realistic/Shure Magnetic Cartridge



3-HEAD SUPER CASSETTE TAPE DECK
SCT-30 by Realistic®

379⁹⁵

Open-reel performance! 3 tape heads for recording and monitoring. Dual capstan drive! Double Dolby—on tape and FM! 3-position bias/EQ switch and variable bias control. Never has Realistic sold a deck of this caliber!!!
14-603



CHARGE IT
(MOST STORES)

THINK OF HI-FI, THINK OF RADIO SHACK, THE NATIONWIDE SUPERMARKET OF SOUND®
LAS PALMAS SHOPPING CENTER

383-4051

403 E. UNIVERSITY DR.

EDINBURG

Most items also available at Radio Shack Dealers. Look for this sign in your neighborhood.

Radio Shack
DEALER

PRICES MAY VARY AT INDIVIDUAL STORES

Pan American

SPORTS

Picken Pessimistic, But Prepared For Tough Schedule

"After the way we've been robbed the last two years, this year I'm expecting the worst," says John Picken, the classy Canadian who has blazed to a 35-9 record playing singles for Pan American University's tennis team.

"But our schedule is even stronger," he adds hopefully. "Maybe they might feel guilty for not inviting us (to the NCAA playoffs), and in 1979 they might give us the chance we deserve."

Picken makes a strong point for Pan Am's nationally ranked, but NCAA-snubbed, tennis program.

"When I was a freshman we beat SMU, then ranked No. 4 nationally. We beat Texas when they ranked No. 8 and Pepperdine when they were No. 9. We beat seven of the 16 teams that were invited, and we beat three of them 9-0. We finished 13th in the nation and they still didn't invite us."

In 1978 the story was much the same, or perhaps worse. Pan Am finished No. 10 nationally yet didn't get invited for one of the 16

coveted playoff spots, picked by a committee of coaches.

This sad story certainly wasn't Picken's fault. He made major contributions to Pan Am's national ranking both years, finishing 20-5 as a sophomore, 15-4 as freshman.

Now, as a PAU junior, he's going to be one of the four men representing Canada in the Davis Cup competition against Mexico in Mexico City Oct. 27-29.

Despite the rollercoaster drama of his first two years in South Texas, Picken remains pleased that he picked Pan Am over other major-college scholarship offers he received from California and Florida.

"I came down here basically for two reasons--the weather, and the tennis competition," Picken said before leaving to join the Canadian Davis Cup team.

"The weather here (in the Lower Rio Grande Valley) means you can play tennis all year. In Vancouver I played tennis four months and soccer eight months. And the competition in

Texas is outstanding. There are strong tennis players all over the state, plus others from the outside coming in to compete."

He likes Pan Am so much that he plans to finish his last years of competition here and then stay to earn a master's degree before taking a crack at the professional circuit.

Already ranked approximately the 300th best tennis player in the world, Picken sees that as a challenge, more than an honor.

"Being 300th or 350th best, wherever I am, doesn't look too good to me," he says candidly. "It's really not much when you look closely at how tough the top competition is. Look at universities like UCLA and Stanford--they have six players who can play pro on both those tennis teams."

"If you can make it to the top 100, you can make good money. If you can make it to the very top, if you can reach Bjorn Borg's level, well, he gets paid \$50,000 a year just for wearing headbands, and

about \$5 million overall, with endorsements and prizes."

Articulate and likeable, Picken might have made it as a professional soccer player, had he chosen to concentrate on that sport.

"We didn't have a tennis team when I was in high school--the big sports there are soccer and basketball,"

the tennis star said.

Coming to Pan Am, Picken credits his coach, A.G. Longoria, for helping him make a spectacular major-college debut.

"I started off low in the lineup, playing No. 6, and that gave me confidence winning. I began to think positive. A.G. would shake up his lineup and let me play

No. 1 through No. 6. We had a balanced lineup with some great players like Ricardo Eynaudi, Robert Bettauer, Sean Sorensen, and everyone helped each other."

In singles, Picken already has lifted the scalps of the top players from TCU, Texas, etc., and has knocked off All-Americans from Trinity, Oklahoma City, etc.

Shorties

All prospective basketball cheerleaders at Pan American University have been invited to attend an organizational meeting Thursday morning.

Any faculty member interested in being cheerleader sponsor this year also is invited to attend.

The cheerleaders will make plans for tryouts at this first meeting.

The meeting will begin 10:25 a.m. Thursday, Oct. 12, in Room 104 of the Physical Education Complex.

A Women's Fellowship of Christian Athletes meeting will take place on Oct. 19 and Oct. 24 in room 112 at the PE Complex. Anyone interested should attend the meetings during activity period.

After all the spikes and set-ups have been completed, a winner for the women's intramural volleyball has been crowned. Taking first place honors were the group from A.P.O. The 14 member bunch bested Camp, Lambda Alpha Epsilon and B.S.U. for the top spot while the others finished in second, third and fourth positions respectively.

Bronc Spotlight

Bobby Rutledge and Mark Savarino, two home-grown Valley baseball stars who sparked Pan American University to continue its tradition as an NCAA major-college playoff team, have been elected co-winners of the Jody Ramsey Memorial Award.

This award is given annually to the senior Pan American University baseball player "who best follows the standards set by the late Jody Ramsey."

Rutledge, the Broncs' speedy center fielder from Edinburg, lettered four years and bid farewell to his outstanding collegiate career by being named to the NCAA All-America team. As a

season record by any major-college player.

Savarino, the sharp second baseman from Mercedes, turned the double play as well as any Bronc infielder in history. He lettered three years, and set a Pan Am

record of 13 game-winning hits in 1976, when the Broncs won 53 games and lost to the NCAA national champion, Arizona, in the playoffs.

Coach Al Ogletree praised Rutledge and Savarino as "two deserving young men who added an awful lot to our program here."

"They'll leave two big gaps to fill," the coach added. "We will surely miss

them. They really exemplify the award."

Ramsey, himself one of PAU's all-time baseball greats with a .346 career batting average, was killed in an accident in 1973. The PAU baseball field and stadium are named for him, as well as the award.

This year marked the third co-winners of the award. Other winners have been Jayme Peper, 1973; Mike Beeler, 1974; Joe Her-

nandez and Tommy Simpson, 1975; Ron Edquist and Ron Lair, 1976; and Steve Dunn, 1977.




Staff Photo by JORGE VILLARREAL

Sites Set

John Picken practices for the upcoming season. The veteran netter hopes this will be the year for


the invitation to the NCAA Playoffs for the Bronc team.

Pan American University Theatre
presents
October 11-14

The Comedy of Errors
THE MEDIA THEATRE
LEARNING RESOURCE CENTER
CURTAIN TIME: 8:15
BOX OFFICE: 381-3581
**PAN AM STUDENTS
ADMISSION FREE WITH I.D.
No Reservation Necessary**

THE ULTIMATE IN SCHOOL RINGS
BY JONSIL

PRICES START AS LOW AS
\$34.95
EVERY STUDENT ACTIVITY WITH FULL NAME INSIDE
* ALL SPORTS POSTIONS
* ALL BAND INSTRUMENTS
* CLUB INSIGNIAS
* ALL SPECIAL INTERESTS
ASK HOW YOU QUALIFY FOR OUR \$10 STUDENT GIFT CERTIFICATE

BRITTON'S JEWELRY
208 S. MAIN - McALLEN

RUSSELL'S
701 N. Cloaner
Edinburg, Texas
383-2051

RACQUETBALL RACQUETS

Seamco	Reg.	SALE
Scorpion	33.00	24.95
Blue Streak II	25.00	18.95
Blue Streak	20.00	16.95
Pro Star	36.00	29.95

FREE! One \$3.25 can of Seamco balls with purchase of Seamco racquet. We also have eye guards, sweat bands, gloves, etc.

Baseballers Start Exhibition Games

As the major league baseball season winds down, Pan Am's baseball program is just tuning up. Assistant Coach Reggie Treadaway said, "This is our spring training camp."

A long six week program is set for the ballball team with intra-squad and Junior College exhibition games scheduled. Around 53 players are trying out with the cut coming at the end of Fall.

"There are quite a few walk-ons trying out," Treadaway said. In the past, people like Bobby Rutledge and Mark Savarino, both starter with the Broncs, were walk-ons. Basic fundamentals are

coached during the mini camp with the individual talent determining how many players will be cut and how many the team will carry for the season.

For this season any way, pitching will be the question for the Broncs and as Treadaway puts it, "Pitching is 85 per cent of baseball."

Starting Oct. 13-14, the baseball squad starts their exhibition games with Junior College teams. "This gives us a chance to look at our players in game action plus we watch the junior college kids." Pan Am does sign a few junior college players, so this gives the Broncs a good look at other talent.



Barbara York aids fellow runner Charles Krest in the annual Fiesta Hidalgo Marathon. Pan Am's Juan Garza placed second in the 26 mile 385 yard course.

STAFF PHOTO BY RIGO ORDAZ



One More Drop STAFF PHOTO BY RIGO ORDAZ

Taking break from soccer workout Jeff Jones quenches his parched throat. The

last game for the team is this weekend at Lamar University.

Intramural

The final entry deadline for men's basketball registration ends Oct. 12.

The gym remains open from 4 p.m.-6 p.m. on week days and from 1 p.m.-5 p.m. on weekends for basketball nuts or intramural

basketball practice.

For any person who enjoys playing tennis, the courts are open from 4 p.m.-6 p.m. during the week. For either event, the only thing required is a PAU I.D. card.

Soccer Team Comes Up Short Once Again.

The big soccer showdown in Kingsville is over, but unfortunately for the Broncs, it ended with the final score going the wrong way.

Coach Reggie Treadaway felt the Broncs played their best game of the year, for 75 minutes that is.

The PAU soccer team played the division leader, Texas A&I, dead even all through the first half and 30 minutes into the second half before things started going the wrong way. At 15 minutes to go, the Broncs had a penalty shot which, if made, would have put them in a commanding position. However, the shot missed, and in the words of Coach Treadaway, "They got the momentum."

From that moment on, the game was lost. A&I marched down the field four times in those last minutes to make the final score read a

lopsided 4-1.

Throughout the contest Pan Am continually outplayed A&I. The Broncs bounced shots off the crossbar and off the sidebars and almost everywhere else but in the net. Pan Am's only goal of the game was scored by Phil Ingles.

Up to this point, the soccer Broncs' season has been a bit below par. Their record of 1-2 includes a win over Southwest Texas 4-0 and a

loss to Sam Houston 3-2. Their performance is definitely due to several factors. Injuries have hobbled key players Jose Gonzalez, out with an ankle problem, and Robert Tapia, knee injury. Also hurting the Broncs' cause is the fact that several starters from last year quit school.

The Broncs are not without their bright spots. Arnulfo Garcia leads the Broncs in scoring with four

goals this season. Leading the Broncs on defense has been goalie Jeff Jones. Coach Treadaway says Jones is doing a good job and getting better every game. He says he expects Jones to become one of the best goalies in the league next year.

It was last year that A&I cost the Broncs the playoffs because of their loss to them.

KEN'S

PIZZAFREE!

Buy one, get one free.

ken's
we keep topping ourselves.

two for one

Clip this coupon, redeem at any participating Ken's Pizza Parlor, and receive a FREE pizza when you buy another of equal value.

Expires October 26, 1978

OFFER GOOD MONDAY THROUGH THURSDAY ONLY.

ken's
we keep topping ourselves.

McALLEN
500 N. 10
682-5581

PHARR
1005 E. Hwy. 83
787-8534

BROWNSVILLE
2489 Boca Chica
546-1614

MEXICAN FOODS
WHITE FLOUR PATOS
Try'em - You'll love em.
For faster service call order in.
McAllen:
Corner of 23rd & Pecos
682-3176
AND
HWY. 83 AT 12TH ST.
687-8269
Edinburg:
Across from PAU
383-0725
Mission:
Hwy. 83 & Bryan Rd.
585-4545
Opening Soon
in Harlingen

SPOTBURGER

We still believe in old fashioned prices and quality service. Once you've tasted our hamburgers and fries, you'll agree.

Call in your orders at: 383-9093

9:00 - 9:30 p.m.

319 E. Cano
Edinburg



DINING
IN A SOUTH
OF THE BORDER
ATMOSPHERE



1012 S. Closser
Edinburg, Texas

Also Drive Up Window For
Fast Go Orders

383-8361

Plans Underway For Conference

Preparations are presently underway for the upcoming Texas Association for the Improvement of Reading (TAIR) Conference here Oct. 27-28.

The annual conference is sponsored by the education department.

Virginia Davis, assistant professor of education, is the PAU coordinator for the state organization. This year the conference marks its 25th anniversary here.

Speakers at this year's conference will be Dr. Jeanette Veatch, professor

emeritus, Arizona State University; and Dr. Robert B. Ruddell, professor of education, University of California at Berkeley. Both will separately present various topics concerning reading and problems and solutions involved with

reading from elementary to college level.

Registration and general sessions will be held in the Fine Arts Auditorium, with small group sessions and presentations being in the Education Building.

"Smaller group presentations will be presented twice, so that people can go to two different sessions," said Davis. The sessions will be held Saturday morning.

Exhibits will also be on display throughout the two-day conference in the LRC lobby. More information concerning registration and various other events will be posted in the education department and on campus in the next few days.

Prof Attended Communications Conference

Dr. Bruce Underwood, professor in mass communications represented the southwestern United States at a conference in international communications held in Taipei, Taiwan (The National Republic of China), Oct. 7 through Oct. 12.

The conference was stag-

ed on the campus of National Cheng-Chi University.

Underwood was chosen on the basis of a resume submitted to the Chinese Information Office in New York City. Selection was based on knowledge of communications between the U.S. and Mexico as well as other Latin American countries. At the

conference Underwood led a discussion on the communications media of Latin American countries.

Besides studying the communications media of various countries, conference delegates made suggestions for improvement of the communications media in the Republic of China.

With your degree, you can either wait for responsibility or...assume it.



There are a lot of good minds coming out of colleges and universities. And every year, the competition gets tougher for the good jobs—jobs with responsibility.

But, as a Naval Officer, you can assume immediate responsibility and leadership: a position that offers you an opportunity to put your skills and education to use in a job that will make the most of what you have to offer, while doing something for your country, too.

The job isn't easy, but if you're a self-motivated person, you can go as high as your ambitions and talent will take you. And you don't have to wait a long time to get there. We'll also start you off at a salary comparable to most corporations.

But a Navy commission also means benefits unrivaled in the civilian job market; 30 days paid vacation, low cost Servicemen's Group Life Insurance and free medical and dental care. And you still have access to the same leisure time activities you now enjoy.

So, don't settle for less than you're worth. Contact your College Placement Office to find out when a Navy representative will be on campus or send your resume to: Navy Officer Program, Code 312 (T208), P.O. Box 2000, Pelham Manor, N.Y. 10803.

In the Navy, you're valuable and we're ready to prove it. Call Navy toll-free 800-841-8000. (In Georgia, 800-342-5855.)

...or call your local Navy representative 512-341-0224

NAVY. IT'S NOT JUST A JOB, IT'S AN ADVENTURE.

Newsbits

Disco Dance Is Set

A disco dance sponsored by the Coffeehouse Committee of the University Center Program Council will be held Oct. 17 in the Ballroom at 8 p.m.

Admission will be \$1 in advance and \$1.50 at the door. Music will be by Mother Starship Connection. Drinks will be sold.

Free popcorn and chips will also be available. Advance tickets are on sale at the UC 205.

Music Department Adds Instructor

The Music Department today announced the addition of Morley Grossman to the faculty.

Grossman replaces, Karl Nielsen, who has retired after 23 years with the university.

Grossman has degrees from the Cleveland Institute of Music, and California State University at Long Beach, and is completing his doctorate of music in piano performance and literature from Indiana University.

Grossman has studied with Sidney Foster, John Ogdon, Jorge Bolet, Victor Babin and Abbey Simon. He will be teaching applied piano, class piano, and accompanying.

Chapel Open All Day

Chapel of the Lord's Prayer, located close to the center of the University campus, is open 24 hours a day for student's use.

According to Tony Vela, Director of Student Activities, the chapel may be used by student organizations, any members of campus ministries or individual students. It may also be used by private organizations and individuals not enrolled at PAU with special permission.

The chapel is non-demoninational and is used by all religious groups on campus.

Many PAU students hold their weddings in the chapel. The chapel is heavily booked for weddings during the months of April, June and December, Vela said.

Station Seeks Residents

The Edinburg Fire Station has room for 10 Pan American students who wish to live there. Only one student, Louis Gonzalez, is presently living at the station.

Assistant Fire Marshall Fernando Nino said Friday students staying at the fire station dormitory receive free room and linen, and can also use kitchen and bathroom facilities.

Students are trained to participate in all fire calls.

Only requirements for students living at the station are that they must be at the Monday night fire drill and alternate weekend shifts, Nino said.

League Elects Officers

The Bios League, an honor society for biology students, elected officers for the 1978-79 year at a recent meeting.

New officers are Cheri Kirby, president; Kathy Estrada, vice-president; Bobbie Weckbacher, secretary; and Anabeth Molina, treasurer.

Al Gerberman a representative of the Department of Agriculture is scheduled to speak in Science auditorium 1 during activity period Oct. 12. His topic will be "Remote Sensing."

Bios League is sponsoring the program.

A K Psi Observes Founder's Day

Alpha Kappa Psi, professional business fraternity, held its Founder's Day celebration Oct. 5 at the Business Administration Building.

Guest speaker, Romolo Martinez, director of the Office of Career Planning, Placement and Testing, spoke to members about the function of the Office.

Refreshments were served to members and faculty after the address.

On another subject, Alpha Kappa Psi recently staged a smoker for fall semester pledges at Memorial Park in Edinburg on Sept. 29. About 70 students and faculty members from their School of Business Administration attended.

The smoker allowed students to learn more about professional fraternity life.

Food and refreshments were served at the meeting.

The Pan American

Weekly Student Newspaper

EDINBURG, TEXAS

THURSDAY, OCTOBER 19, 1978

Vol. XXVII No. 6

University is Largest Employer

Study Shows More Dollar Flow Generated From Pan Am

By **BEN TREVINO**
Staff Reporter

Pan American is the largest employer in the Valley. There is more dollar flow from the university than from any business in this area. With that in mind, one must wonder just exactly how much impact does the University have on the Valley's economy?

Mike Crews, professor of economics here has for the past two years researched the subject. His efforts have culminated in a recently completed and unpublished study.

Crews' study indicates there are three major impacts on the Valley economy--School spending, salaries, and the students enrolled at the university.

Before talking dollars and cents, however, one must take into account the seemingly endless list of variables and unknowns which factor into exactly how much money gets into the Valley's economic flow, Crews said recently. "Getting actual dollars and cents figures is impossible."

Crews points out that his study is not all that accurate for a number of reasons. To get accurate figures involves asking personal questions of the university faculty, staff, and students. Questions about savings accounts, bank accounts, where money is spent, and the like.

The Valley, being composed of many small communities has also made the multiplier effect inconsistent, he said. That is, there is no sure way to tell if a dollar spent in Edinburg will increase the same as it would were it spent in Brownsville.

With these and other factors in mind, Crews arrived at some rough figures.

For the academic year, 1975-76, his study shows Pan American paid out to its 838 employees, a gross amount of about \$9.5 million. After taxes, social security, and other deductions, the study shows some \$6.5 million in net pay. With a computed multiplier of 1.2 total dollar impact to the Upper Valley economy, according to the study, amounted to just over 5 million.

A great deal of the school's purchasing is done at the state level through bidding. This encompasses items that every university across the state is likely to use a lot of--books, calculators, typewriters, and similar office equipment. There still was some local spending and Crews said the university spends about 2 million a year.

Crews' study also looked at how much of a role the students play in the economic picture. For academic year 1976-77, Crews study indicates PAU students spent approximately \$7 million in the Edinburg area; 3 million in McAllen, and almost \$5 million in all other Upper Valley towns.

Looking at the entire picture, Crews' study indicates that during the average year, the university pours approximately \$11.7 million into the Edinburg economy; \$5.7 million into McAllen's; and about \$6 million into all other upper Valley towns. That brings the university's total impact to the Valley economy to about \$23.5 million.

Crews was quick to point out the figures are "rough." Factors which should be considered are difficult to gauge and some of the impacts are hidden. Summer and part time student were not figured in either.

But Crews' study does show, as accurately as possible, that the university does play a substantial role in boosting the Valley's economy.



STAFF PHOTO BY RIGO ORDAZ

Steel Spaghetti

A construction worker sifts through huge piles of steel and iron scrapings as renovations work continued Wednesday on the old Math and Engineering Buildings. Construction sites have necessitated detours for many who have com-

plained about inconveniences when walking to and from classes. In this picture, flags in the center of the old library circle are visible in the background.

NEWSBITS

Cheerleaders to be Chosen

Cheerleader tryouts have been scheduled for 3 p.m. Oct. 29 in the Pan American fieldhouse, according to Jim McKone, sports information director.

The tryouts will be judged either in pairs or individually with 10 cheerleaders being chosen to represent Pan American.

There will be a meeting before the tryouts Oct. 24, during activity period in room 104 in the PE Complex. The meeting is open to anyone interested in trying out for cheerleader, McKone said.

'Night Owl Celebration'

The United Methodist Campus Ministry is having a Night Owl Celebration Oct. 27 starting at 9 p.m. and ending at 6 a.m. the following day with a breakfast.

Students participating will be treated to "Christian Fellowship," along with skating, bowling, singing, movies, group discussions and other games, according to a ministry spokesman.

For future information on tickers, contact UMCM Director Rev. Jose Palos, Raul Gutierrez, or Odilia Olivarez at 383-0133.

An informal Bible Study is also held every Thursday by the Methodist Campus Ministry in the PAU Chapel during activity period.

Fun Run Results

Fun-Run sponsored by the Health and PE Club was held Oct. 10 during activity period in front of the old gym.

In the mens division, winning first place in 9:31 was Paul Vega. Second place went to Jessie Trevino, 9:33; third place to David Chavana, 11:04; and fourth to Joe Gutierrez, 11:14.

In the girls division, winners were: Delia Calvillo, 15:55; second place winner, Delia Francis Trevino, 16:44; third place winner Sylvia Leal, 16:24; and fourth place winner Lucy Martinez with 16:51.

Dorm Debs Elect Officers

The Dorm Debs recently elected officers for 1978-79. Elected were:

Diana Canales, president;
Josie Diaz de Leon, service vice president;
Annabelle Gutierrez, social vice president;
Rosa Blanca Ramos, fund raising president;
Dalinda I. Solis, secretary;

Profs to Have Social

The American Assn. of University Professors will be host for a social Oct. 24 during activity period at the LA building faculty lounge. Coffee and doughnuts will be served and the meeting is open to all faculty members.

Juniors Urged To File Degree Plan

Pan American students with at least 60 hours or with junior standing should file for a degree plan with the department heads of their major or with counselors according to Linda Flores, Assistant Registrar.

The degree plan enables students to follow a suggested curriculum in order to graduate with the major of their choice. The bachelor's degree requirements every student must meet include completion of at least 124 hours of which 36 must be advanced and an overall 2.0 GPA.

Students must also have a 2.0 GPA in their major, minor, and in English. Deviations from the suggested curriculum must also be approved by the department of their major.



COMMENTARY

An open letter to Dr. Alvarez and Mike Nevarez

Last week's newspaper said you are concerned about non-registrants this semester. Instead of advancing theories and making telephone surveys, ask yourselves how long you'd be customers of stores with these practices:
 Harrassing customers for 30 minutes before closing, and insisting that all purchases be made 15 minutes before closing-like the library.
 Keeping unposted and arbitrary hours-like the media center.

Unlocking some main doors while leaving others locked, with no indication—like Emilia Hall, the cafeteria, and the LRC Lobby in the early morning and late evening.
 Reserving the choicest parking spots for employees.
 Having **no** customer parking spots—like in front of the Administration Building.
 Creating deterrents to customership—like registration.
 Expecting customers to suffer through remodeling.
 Operating (and making decisions) according to tradition.
 Dunning former customers for more money, with no goods in exchange—like the alumni association
 Bothering prospective customers with telephone calls asking why they didn't become customers—like PAU is doing.

What I'm saying is, the "good old days" are gone. Students may no longer willingly accept second-class status upon matriculation. If you want us to remain customers of your wallpaper factory, you may have to start treating us in the manner customers expect.

Yours for a consumer-oriented campus,

Courtney D. Wood
 Management Major
 Edinburg

Sight and Sound Failed in 'Errors'

By TED DANIEL

Marion Monta's dramatists presented a perky version of Shakespeare's light comedy Thursday night before an enthusiastic audience in the LRC Media Theatre. With the aid of an innovative set and a wild slapstick interpretation, "Comedy of Errors" managed to draw chuckles and occasional laughs while spouting extremely difficult lines of Shakespearean poetry.

In order to overcome the tongue-tangling lines and the tedium of delivering an idiom probably unfamiliar to most South Texans, Monta's crew resorted to a myriad of sight gags that could have put the Keystone Cops to shame. However, the split second timing required for such visual humor was not always evident, and throughout the performance, the various acrobatic pratfalls seemed a trifle strained.

Still, the play did go on despite the innumerable "loud thumps" of bottoms and knees upon the wooden stage. One can only wonder which Dromio will be put on the injured reserve list, but then the "team" for this play does consist of almost 20 players.

If the sight gags didn't always come off, the rather com-

plicated lines reeled off at approximately 30 m.p.h., fell far short of "saving the day." In an effort, I'm guessing, to make the lines sound more natural, many of them were delivered in an unabashed southern drawl—I'm not referring to southern England either. Then, some players—the Duke for example—shouted their lines while others merely raised their voices 4 or 5 degrees on the Richter Scale.

Why did they do this?

There's one very good reason: acoustics in the LRC Media Theatre are terrible. To attempt a speech in the Media Theatre sans microphone is like trying to communicate verbally at Bocaccio 2000—the very walls are noisy. Timbre and tone are lost in cacophonous echoes, and anything uttered in a normal voice is flattened against the ceiling or lost in the floor below. The actors in this production, then, no doubt shouted out of grim necessity.

What then is there left to say if sound and sight have almost failed in a play? Not much. But, it was a whale of an effort for sure, and even with its flaws one all Shakespeare buffs should see.

Classified Ads

WANTED - Math Tutor, for the High School Equivalency Program. 15 hour week position; minimum wage. Apply at Emilia Hall, Room 207.
 DIAMOND ENGAGEMENT & WEDDING RINGS: Up to 50% discount to students, faculty & staff. Example, 1/4 ct. \$150, 1/2 ct. \$350, 1 ct. \$995, by buying direct from leading diamond cutter. For color catalog send \$1 to SMA Diamond Importers, Inc., Box 42, Fanwood, N.J. 07023 (indicate name of school) or call (212) 682-3390 for location of showroom nearest you.
 Classified rate is 20 cents a line with a minimum of \$1 for each insertion, payable in advance. Bring ad copy to The Pan American, Emilia Hall 100. Deadline is Friday noon. To estimate cost count 25 letters and spaces to a line.

UNIVERSITY EVENTS CALENDAR

<p>Oct. 19 8 a.m.-4 p.m. College Republicans campaign booth; snack bar. 10:35-11:35 a.m. Political Science Association meeting; LAB 101. 10:35-11:35 a.m. Women's Fellowship of Christian Athletes; PE Complex 112.</p> <p>Oct. 20 12-4 p.m. Chess Tournament UC 307-306A. 7:45 a.m.-4:15 p.m. GED Testing; UC 306-306A.</p> <p>Oct. 22 6:30-8 p.m. Alpha Phi Omega; UC 305-305A. 1:15-4 p.m. Kappa Delta Psi; Ballroom 4-6 p.m.: Ladies of Camelot.</p>	<p>Oct. 23 6:30-10 p.m. Kappa Delta; UC 305-305A. 6:30-10 p.m. Kappa Sigma; UC 306A. 5-9 p.m. Delta Zeta 307. 7-9 Delta Zeta pledges UC 307A. 6:30-9 p.m. Phi Kappa Theta; UC 306A. 12-4 p.m. UCPC Chess Tournament; Ballroom Texas Student Nursing Association bake sale; Nursing Building.</p> <p>Oct. 24 12-4 p.m. UCPC Chess Tournament UC 307-307A. 10:25-11:35 a.m. Camp meeting SB1. 10:35-11:35 a.m. Women's Fellowship of Christian Athletes PE 112.</p>	<p>10:25-11:35 a.m. APO meeting UC 305. 10:35-11:25 a.m. Intersvarsity meeting UC 305A. 10:25-11:35 a.m. El Sol meeting UC 307. 10:25-11:35 a.m. Inter Fraternity Council meeting UC 306A. 1-5 p.m. Placement Seminar Ballroom. 5-7 p.m. Ladies of Camelot, meeting UC 306-306A.</p> <p>Oct. 24 American Chemical Society SNEA meeting Ed 119 meeting, activity period; SB3. 6-10 p.m. Inter Collegiate Knights meeting UC 305-305A. 6:30-10 p.m. Kappa Delta meeting UC 307-307A.</p>	<p>8 a.m.-5p.m. Social Work Program meeting UC 306-306A. 12-4 p.m. UCPC Chess Tournament 8 a.m.-2 p.m. John Hill rally; Ballroom.</p> <p>Oct. 26 8 a.m.-4 p.m. HEP & GED Testing; Ballroom. 10:25-11:25 a.m. Inter Service Council meeting; LA 105. Young Democrats meeting, activity period; LA 115. 12-4 p.m. Chess Tournament; UC 307-307A. TKES meeting; activity period; UC 306A. 6-11:30 p.m. HEP testing; Ballroom.</p>
---	--	---	---

The Pan American

News Editor	Juan Castillo
Staff Reporter	Leticia Diaz
Staff Reporter	Cynthia Garcia
Desk Assistants	Rosalinda Alvarez
	Linda Brown
Sports Editor	Oscar Garza
Sports	Terry Welty
Staff Photographer	Rigo Ordaz
Staff Photographer	Jorge Villarreal
Advertising Manager	Phyllis Driskill
Circulation Manager	Joe Mangin
Adviser	Harry Quin

The Pan American student newspaper at Pan American University published by Student Publications, Emilia Hall 100, phone 381-2541, at Edinburg Texas 78539, each Thursday except during examinations and holidays under Dr. Mike Nevarez, vice president for student and university affairs, and Harry Quin, adviser. Views presented are those of students and do not necessarily reflect those of the University administration. Subscription price by mail, \$3 a year, \$1.50 per semester. Contributions and letters should be submitted by Friday before publication.

17 Company Representatives To Recruit

A total of 17 company representatives will visit Pan American during October in hopes to recruit PAU

students and alumni, according to Romulo Martinez, director of the Career, Planning, Placement, and Testing Office.

Marketing, biology, and business majors will be interviewed by recruiters from the American Hospital Supply Company today.

Visitors from the Mobil Oil Corporation and J.C. Penny Company will also seek accountants and retail management trainees on Oct. 19.

On Oct. 20, the F.W. Woolworth Company and IBM Corporation will seek retail management trainees and students majoring in accounting, marketing, management and sales. Also, representatives from Harvard Law School will interview graduate students on Oct. 20.

Graduate students may speak to representatives from Stanford University on Oct. 23.

Recruiters for Institute for International Trade will seek students majoring in social sciences, business and language on Oct. 24. That same day, Lockheed Electronics representatives will talk to students majoring in business, physics, math, chemistry, and computer science.

Exxon representatives will be on campus on Oct. 24-27 and speak to marketing, accounting, and business majors.

Representatives from the House of Jeans will seek management trainees on Oct. 25.

The Dallas Independent School District will send recruiters on Oct. 25 and 26.

The Tenneco Corporation will interview students majoring in accounting with at least a 2.8 grade point average on Oct. 27. Also,



Romulo Martinez, director of placement; and Isabel Carlan and Erasmo Menchaca,

both Pan Am seniors, look over a supply of new books on how to land the job you want.

Joske's of Texas representatives will talk to business, management, and marketing majors.

F.B.I. representatives will

seek special agents for positions in U.S. and Puerto Rico on Oct. 28.

On Oct. 30, the N.O.A.A. Company will

seek meteorologists and oceanographers.

Business majors will be interviewed by the LoVaca Gathering, Kroger, J.C.

Penny, and Conoco Companies on Oct. 31. Also, the International Boundary and Water Company will interview all majors on Oct. 31.

Mexico's First Lady To Conduct Conference

The first Pan American Conference on Rehabilitation and Special Education, sponsored by the office for Inter-American Affairs and International Education here in cooperation with the Soledad Tamaupeca de Rehabilitation Education, will be held Oct. 30-Nov. 2.

The conference will be conducted by the wife of Mexico's President Lopez-Portillo.

Speakers and participants from all over the U.S., Mexico and Central and South America will share information and expertise on a wide variety of topics related to rehabilitation and special

education, according to conference organizers.

Mental Health and Mental Retardation, Region One, Texas Rehabilitation, Easter Seal Society, and various local school districts are planning the conference.

More than 40 special programs, addresses, panels, workshops and report sessions have been scheduled. Visits to area agencies as well as many informal and formal social activities are planned for the participants.

A special film festival featuring highly acclaimed Academy Award winning films in the area of rehabilitation also are scheduled.

Registration begins Oct. 30 from 8 a.m. to 4 p.m. at the Fine Arts Auditorium foyer on campus. Opening ceremonies begin at 10 a.m. with honored guests and presentation of flags of the Organization of American States.

Monday's conference theme will be "Identification and Prevention of Handicapping conditions," Tuesday's theme is "Diagnosis of Handicapping Conditions in the Americas." "Treatment" will be addressed Wednesday and "Social Adaptation for the Handicapped" will be Thursday's theme.

Traineeships Available For Social Work Majors

Social Work majors are eligible for traineeships at Pan American announced Professor Hermila Anzaldua, director of the Social Work Program.

The traineeships include tuition, fees and maximum stipend of \$200 a month (basic living allowance) to full-time social work majors and may also cover as many as 16 hours each fall and

spring semester and up to seven hours each summer session.

Traineeships are open to juniors and seniors with a minimum 2.0 grade point average and who are declared social work majors with a degree plan on file. Students must apply immediately for the spring, Anzaldua said.

Students must not be in

any category of scholastic discipline for poor academic performance at the time of the application or after becoming a recipient. He or she must be academically prepared and committed to pursue a course of study directed toward work with clients needing social services.

Recipients may not accept part of full time employment

once they become traineeship recipients. Except for GI benefits, students cannot receive any sort of financial aid.

Students must enter a legally binding commitment to seek employment with the department of human re-

sources, she said.

For details contact the social work program, 381-3575, or go by the LA Building, room 342, from 8 a.m.-4 p.m.

Application deadline for the spring '79 semester is Nov. 15, 1978.

Marriage Questions Confidential

No longer can Pan American University ask a student about marriage status. Bill Morris, director of admission, said a new Texas law prohibits Pan American from doing so. Only the Federal Aid office will have the information. The law went into effect which means Pan American is in the process of reprinting all admission applications because state officers say they are discriminatory to admissions applicants.

APO Has Smoker

Alpha Phi Omega, national service fraternity here, recently had its poolside smoker at Palm Lake Estates. A total of 90 members attended. Pledge class officers are President Gladys Garcia; Vice President Alfredo Flores, Parliamentarian Juanita Barrera, Secretary Liz Tores, and Treasurer Irene Valladares.

*Allen Floral
by Betty*

1320 N. CLOSNOR N. HWY. 281
EDINBURG, TEXAS 78539

PH. A. C. (512) 383-6822 383-8611

ASTROLOGY

University graduate, 27; would like to meet Gemini, Cancer, Leo, Scorpio, Aquarius, & Pisces girls 19 to 27 (5'4" or taller).

Robert Robles
P.O. Box 331
Weslaco, Texas
78596



CAUSE SUSAN TAKES CLIFF'S HOME TO STUDY.
MORAL: GET CLIFF'S NOTES WHEN YOU NEED HELP UNDERSTANDING THOSE DIFFICULT NOVELS, PLAYS AND POEMS.

UNIVERSITY BOOKSTORE
Pan American U.
Edinburg, TX 78539

HERE!



Members of the Vets Club here at Pan American didn't let a steady downpour bother them in their efforts to sell fajitas during a local city fiesta last

week. The booth was one of few without a roof. Sales were brisk anyway.

Regents Hire Attorney

Pan American University board of regents took a step closer in selecting one of five possible locations for the new 200-acre PAU campus at Brownsville, and approved the employment of a new university attorney in their October meeting.

The regents met at the University of Texas at Dallas and were hosted by Dr. Bryce Jordon, president of the university. Board members also visited UT at Arlington and met with Dr. Wendell H. Nedderman, president of the university.

Administrative officials of the UT campuses explained departmental programs and the institutions' constructional activities to PAU regents.

According to Dr. Robert Crane, PAU vice president for academic affairs, a resolution was made to employ Matthew Claunch and Kenneth Bentsen Associates as engineers and architects to study feasibility of the proposed sites of a the Brownsville campus and to prepare preliminary plans for the construction of a combined classroom, office and library building.

Regents also employed John R. Hedrick of Austin as university attorney.

A motion was passed to designate Dr. Robert Wrinkle as director of the honors program. Wrinkle is an associate professor in the political science department.

In other action, the regents approved \$75,000 for completion of a student plaza to be built on the corner of University Drive and Fourth Street.

Biofeedback Research Project Being Conducted

Would you like to control your own muscle contractions and learn to relax? Experiments of this nature are being conducted in building "J" under auspices of the Minority Biomedical Support Program.

The research technique being used is known as "biofeedback." Biofeedback is an educational program whereby people can learn to

become more aware of their involuntary functions through training.

This method allows the individual to become more attuned to inner body processes, such as muscle tension, blood pressure, heart rate and other internal functions. Experimental findings will determine whether biofeedback training is effective in dealing with disorders

such as migraine headaches, tension headaches, and asthma.

The research project is supported by grant from the Minority Biomedical Support program, and is being conducted by Drs. Roy Cain and Gary Montgomery of the Department of Behavioral Sciences. Research assistants are Sally Jackson, Vivian Ramirez, Diana Silva

and Garciela Villarreal.

Although the main project involves people who experience tension headaches, migraines, and asthma, studies being conducted will also involve people who do not suffer from those disorders.

Anyone interested in helping this research project as a volunteer subject, may go by building "J," or call

381-3330/3321.

"Students who volunteer must be diagnosed by a doctor as having one of the disorders being tested," Dr. Montgomery said. He also said they are in need of someone with a strong physics, computer science, electronics or math background to work in the project.



Roger E. Kislinsky, and executive with Mobil Oil Corporation in Dallas, will be on campus Wednesday, Nov. 1 through Nov. 3. Kislinsky has held a variety of positions with Mobil before assuming his present position as manager of all Mobil's United States operations in exploration and producing, crude oil, manufacturing and gas liquids accounting. Kislinsky brings more than 25 years experience to the classroom for his period of executive-in-residence at Pan Am. He has also been active in the Data Processing Management Association, Petroleum Accountants Society and Systems and Procedures Association. Kislinsky will be making classroom visits in various business administration courses and will also be available for student and faculty conferences. The public is invited to hear Kislinsky talk on "The Energy Crisis - What We Can Do About It," at 1 p.m. Nov. 2 in the business administration auditorium, room 110 in the Business Administration Building.

Student Teachers To Work in Austin

Pan American will conduct an experimental student teaching program with the Austin Independent School District, according to Nolan Wood, director of student teaching.

The program will permit student teachers to fulfill their directed field experience requirements in Austin during the spring semester of 1979, Wood said.

Students participating in the program will sign for positions at Pan Am and live in Austin during their student teaching.

While in Austin, student teachers will serve as part-time teacher aides and

receive \$225 per month. The Austin ISD office of staff development and student teaching will supervise the PAU students in conjunction with Pan American.

Austin ISD personnel will aid the student in securing housing and orientation to the city of Austin.

"The experimental program was set up with Austin mainly to provide an opportunity for Pan Am students to teach in a large city," Wood said.

Students interested in the program should talk to Wood in room 116 in the Education Building or call 381-3407.



An exhibit by Harlingen senior Lupe Vasquez is presently on display at the LRC. Vasquez's show consists of ceramics, paintings, drawings in mixed media and photographs.

SOUTHWESTERN BELL

Has immediate openings in the Marketing Department for Communications Consultants.

Office based in Harlingen, serving business customers throughout the Valley.

Professional Training Provided
Attractive Salary, Fringe Benefits, Challenge, Opportunity for Advancement.

Previous selling or public contact experience preferred, but not necessary.

Call collect to Employment Office 512-425-8176 between 8-10 A.M., and 1-3 P.M., Monday thru Friday.

SOUTHWESTERN BELL

An Equal Opportunity Employer



Shoes Sportique

2110 North Tenth Shopping Center
McAllen, Texas 682-7151



**PREGNANT
NEED
HELP?**

CALL
Pregnancy
Information
San Antonio
828-9316

Radio Shack®

FALL SAVINGS

SPECTACULAR!

MOBILE AM/SSB CB FOR SAFETY
TRC-449 by Realistic

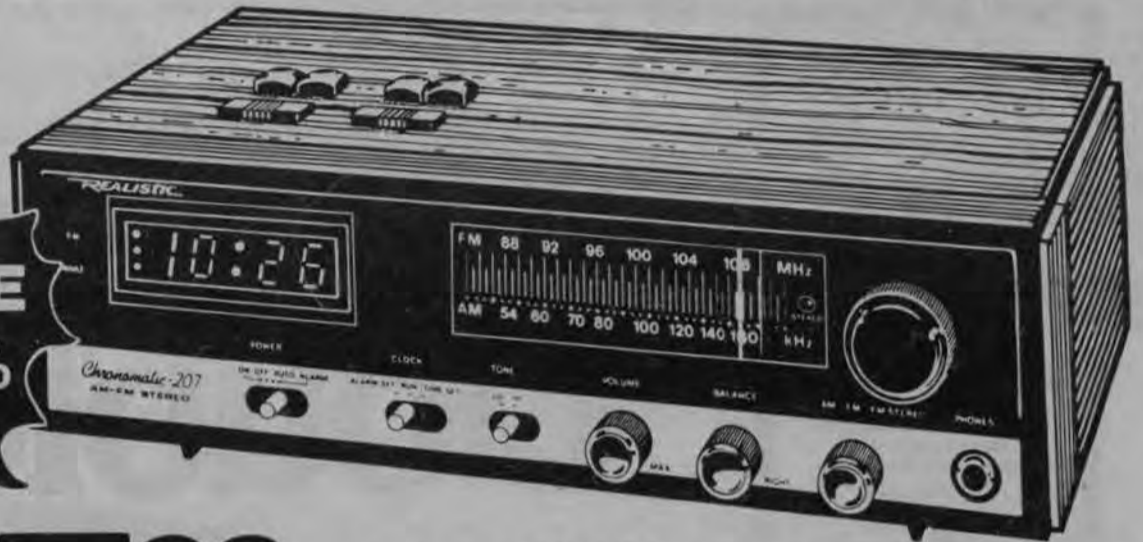


199⁹⁵
Reg. 269⁹⁵

SAVE \$70

A top-class radio! SSB triples the available channels. Noise blanker, RF gain, LED dimmer, PA with CB monitor. 21-1562

SAVE 31%



47⁸⁸
Reg. 69⁹⁵

AM/FM STEREO DIGITAL CLOCK RADIO
Chronomatic®-207 by Realistic®

Most clock radios are mono—this is a 2-speaker stereo! Wake to AM, FM, 24-hr. buzzer alarm. LED dimmer, snooze bar, 1-hr. sleep switch, lighted dial. Walnut-grain case. 12-1512

PORTABLE CASSETTE RECORDER
CTR-43 by Realistic



25⁸⁸
Reg. 29⁹⁵

SAVE 13%

Send a talking letter, record music, lectures! Includes built-in mike, auto-level, auto-stop, pushbuttons, batteries. 14-870

2-STATION INTERCOM BARGAIN
by Archer®



10⁸⁸ Pr.
Reg. 14⁹⁵ Pr.

CUT 27%

Talk indoors or out. 66-ft. cable, 9V battery included. Mount on wall, shelf, desk. Remote can signal master even if system is "off."
43-221

8-BAND AC/BATTERY RADIO
Patrolman® CB-8 by Realistic



CUT \$40

89⁹⁵
Reg. 129⁹⁵

Superb, powerful world-ranging portable that tunes AM, FM, CB, SW, VHF-Hi/Lo/Aircraft, UHF. Batteries optional.

12-763
Mobile VHF use in some localities may be unlawful or require a permit. Ask local authorities.

24-HOUR TIMER
by Micronta®



8⁸⁸
Reg. 9⁹⁵

CUT 10%

Fool burglars! Turn lights, TV, appliances on or off automatically. Or wake to freshly brewed coffee. 63-858

CHARGE IT (MOST STORES)



MEMORY CALCULATOR
EC-226 by Radio Shack®



CUT 12%

7⁷⁷
Reg. 8⁸⁸

Answers your math problems! 4-key instant recall/cancel memory, percent, case, batt. 65-619

MULTITESTER
by Micronta

Reg. 49⁹⁵ **39⁹⁵**

CUT 20%

Test-it-yourself! Check voltage, resistance, more. 5" scale, leads, batts. 22-207



WHEREVER YOU LIVE, WORK OR PLAY, THERE'S A RADIO SHACK STORE NEAR YOU!

LAS PALMAS SHOPPING CENTER

383-4051

403 E. UNIVERSITY DR.

EDINBURG

Most items also available at Radio Shack Dealers. Look for this sign in your neighborhood.

Radio Shack
DEALER

PRICES MAY VARY AT INDIVIDUAL STORES

A DIVISION OF TANDY CORPORATION

Pan American Sets Halloween Classic For Weekend Netters Players

Pan American University will be the site of the Pan American Halloween Classic Friday, Saturday and Sunday, October 27-29, 1978.

All matches will be played at Cox Tennis Stadium and the lighted P.E. Tennis Complex on the Pan American University campus.

Junior division play begins at 4:30 p.m. Friday, October 27 in five divisions: 10 and under, 12 and under, 14 and under, 16 and under, and 18 and under divisions. Juniors are limited to one division, but may play singles, doubles and mixed. Adult divisions begin at 6:00 p.m. Friday, October 27 in seven categories: 21 and under, 35 and over, 45 and over, and 55 and over. In the open classification participants, of any age may compete in any of 3 divisions: **A** player - for college player or teaching pro or one who has won a **B** tournament; **B**

player - for intermediate or club player or one who has won a **C** tournament; **C** player - novice or beginner player who has never won a **C** tournament.

Tournament director is Charlie Redd with the proceeds going to help Pan American University's tennis program. Entry fees are tax deductible donations to Pan American Tennis Fund of \$5.00 per person per event.

Beautiful ribbons will be given to 1st, 2nd, 3rd and 4th place finishers in each event. All participants will be guaranteed at least two matches. A consolation draw for all first round losers will be held in each event.

Tournament information may be obtained by calling Charlie Redd at 381-2236. Entry blanks may be picked up at the Pan American Athletic office or at most tennis clubs or shops in the Valley.

This is the third tournament of its type held at Pan American. It gives players of every age and caliber of play a chance to play at least two and maybe more matches in a true tournament format.

Entry deadline is Wednesday, October 24, 1978 with the draws made Thursday by Charlie Redd and tournament referee Robert Bettauer.

"This tournament is designed mostly for the weekend players; the students and faculty players; the juniors who want to get tournament experience, but don't want to just play one match by losing in the first round," noted Redd. "This type of format allows the better players to play for first and second while the less experience get to play against the better players and still get a chance to win a ribbon for third or fourth place."

CLIP COUPON



DOUBLE
FOR THE PRICE OF A
SINGLE

Now at Wendy's Old Fashioned Hamburgers this coupon entitles you to a Double Hamburger for the price of a Single Hamburger.

Offer expires

NOVEMBER 5, 1978

PRESENT COUPON WHEN ORDERING

CLIP COUPON

ONE BOWL CHILI PER COUPON



20¢ OFF
CHILI

Now at Wendy's Old Fashioned Hamburgers this coupon entitles you to 20¢ off Wendy's rich, meaty Chili.

Offer expires

NOVEMBER 5, 1978

PRESENT COUPON WHEN ORDERING

CLIP COUPON

ONE ORDER FRENCH FRIES PER COUPON



15¢ OFF
FRENCH FRIES

Now at Wendy's Old Fashioned Hamburgers this coupon entitles you to 15¢ off an order of French Fries.

Offer expires

NOVEMBER 5, 1978

PRESENT COUPON WHEN ORDERING

CLIP COUPON

ONE FROSTY PER COUPON



15¢ OFF
FROSTY
DAIRY DESSERT

Now at Wendy's Old Fashioned Hamburgers this coupon entitles you to 15¢ off a thick, rich Frosty.

Offer expires

NOVEMBER 5, 1978

PRESENT COUPON WHEN ORDERING

Get a Hot 'n Juicy Double ^{1/2} pound hamburger ●●●



for the price of a Single ^{1/4} pound hamburger



1520 S. Closner, EDINBURG • 1201 N. Tenth St., McALLEN

Pan American

SPORTS

The Broncs

Young Dribblers Open Practice Once Again

Ten newcomers, transfers from 10 different junior colleges, joined three lettermen Oct. 15 when the Pan American University basketball team began its big rebuilding job.

Coach Bill White began practice on Oct. 15 along with some 250 other major-college basketball teams throughout the U.S. The National Collegiate Athletic Association picks Oct. 15 as

the date for official practice to begin.

The new-look Bronc immediately started working toward their first game, in Edinburg Nov. 28 against the University of Hawaii Rainbows from Honolulu.

With so many new faces, the Broncs probably will do a great deal of intrasquad scrimmaging to find out where the scoring and rebounding strength will come from.

The three veterans are 6-7 Danny Salisbery, 6-7 Rex Spain and 6-4 Jim Ed Holland, all seniors. Salisbery is the only return-

Nine other states are represented on the roster. However, seven of these men played for junior colleges in Texas or Oklahoma.

ing starter from last season's excellent 22-4 team. Spain and Holland saw much action in back-up roles.

The newcomers include several men with good medium height. They are 6-7 Sam Scott, 6-7 Stanley Lett, 6-6 Denzil Dean and 6-5 Larry Corbin. Three more of the new men are 6-4, Don Knight, Donnie Thompson and Ron Jones.

A couple of home towns that are familiar to Bronc fans appear on the new roster. Dean comes from St. Louis, the same home as Marshall Rogers, who won the NCAA national scoring crown for Pan Am in 1976. Thompson is a cousin of Henry Taylor, who was the NCAA's No. 2 rebounder last season, and comes from the same city, Hobbs, N.M.

Lett is from New York City. All the other Broncs come from southern states.

For the first time in many years Pan Am won't have a player under six feet tall. The new guards are 6-2 Billy Bailey, 6-2 Jeff Smallwood and 6-0 Matt Sites.

The other home towns are Sites, Orlando, Fla.; Knight, Montgomery, Ala.; Corbin, Columbia, S.C.; Holland, Bowling Green, Ky.; Jones, Stillwater, Okla.; and Scott, Rustburg, Va.

Another rarity on this team is that it includes on the official roster no sophomores and no freshmen.

Pan Am's present basketball situation is very similar to White's first year as coach, two seasons ago. He had to start over with a new lineup then. The new Broncs responded with a 17-9 record and then went 22-4 when most of them were seniors in 1978.

PAN AMERICAN UNIVERSITY BASKETBALL ROSTER, 1978-79

No.	Player	Pos.	Ht.	Wt.	Class	Birthday	Experience	High School	Home Town
10	MATT SITES	G	6-0	160	Jr.	6/26/58	JC	Lake Highland	Orlando, Fla.
11	DON KNIGHT	G-F	6-4	170	Jr.	2/11/55	JC	Sidney Lanier	Montgomery, Tx
12	BILLY BAILEY	G	6-2	175	Jr.	9/25/58	JC	McCollum	San Antonio, Tx
13	LARRY CORBIN	F	6-5	200	Jr.	8/30/58	JC	A.C. Flora	Columbia, S.C.
14	JEFF SMALLWOOD	G	6-2	155	Jr.	1/26/58	JC	Justin Kimball	Dallas, Tx
24	STANLEY LETT	F	6-7	195	Jr.	10/3/58	JC	John F. Kennedy	N.Y., N.Y.
32	JIM ED HOLLAND	F-G	6-4	210	Sr.	6/4/57	Ltr.-3	Bowling Green	B'ling Green, Ky
34	DONNIE THOMPSON	G-F	6-4	187	Jr.	9/25/57	JC	Hobbs	Hobbs, N.M.
35	DANNY SALISBERY	F-G	6-7	208	Sr.	2/13/57	Ltr.-1	Temple	Temple, Tx
41	RON JONES	F-G	6-4	200	JR.	11/28/57	JC	C.E. Donart	Stillwater, Okla.
42	REX SPAIN	F-C	6-7	205	Sr.	7/26/57	Ltr.-1	Huckabay	Huckabay, Tx
44	DENZIL DEAN	F	6-6	187	Jr.	7/8/57	JC	Normandy	St. Louis, Mo.
50	SAM SCOTT	C	6-7	210	Jr.	8/12/57	JC	Rustburg	Rustburg, Va.

COACH: Bill White. ASSISTANT COACHES: Bill Shirley, Kelly Bass. TRAINER: Dave Binder.

Match In Corpus Christi

Netters Have Once More Match

Even without a head coach, Bronc netters are still sharpening themselves for competition with several exhibition contests throughout the fall season.

Pan Am is a young team this season having only senior and the rest being juniors and sophomores. A few foreign athletes are

among the top returners on the squad.

"It is just a conditioning situation," Charlie Redd, interim coach, said. He went on to say, "Normally, they know what they are doing wrong, besides the head coach usually works on strategy for the team."

Under former coach A.G. Longoria, national fame

went to the Broncs last season. Pan Am finished the year ranked No. 10 nationally in the major polls. Still, the netters were snubbed by the NCAA for the playoffs.

According to Redd, the Broncs should remain in the nation's Top Ten starting out this season plus the netters could even be ranked in the top eight nationally.

A squad of six members and two extras will carry the fortunes this season for the Broncs as the team works to receive a bid to the NCAA Playoffs.

The team has played well throughout the fall with only one more match remaining. The Corpus Christi Thanks-

giving Tourney will end the fall season for the netters.

It looks to be another exciting year of tennis action for the University plus spectators and as Redd put it, "It's going well now."



Staff Photo by JORGE VILLARREAL

With his racket cocked, Brian Liberman prepares to go cross court with a backhand shot.



Dlite
MEXICAN FOOD

DINING
IN A SOUTH
OF THE BORDER
ATMOSPHERE

Taco Dlite

1012 S. Closner
Edinburg, Texas

Also Drive Up Window For
Fast Go Orders

383-8361



PATO
MEXICAN FOODS

WHITE FLOUR PATOS

Try'em - You'll love em.

For faster service
call order in.

McAllen:
Corner of 23rd & Pécán
682-3176
AND
HWY. 83 AT 12TH ST.
687-8269

Edinburg:
Across from PAU
383-0725

Mission:
Hwy. 83 & Bryan Rd.
585-4545

Opening Soon
In Harlingen

KEN'S PIZZAFREEA!

Buy one,
get one free.

ken's
we keep topping
ourselves.

two for one

Clip this coupon, redeem at any participating Ken's Pizza Parlor, and receive a **FREE** pizza when you buy another of equal value.

Expires November 2, 1978

OFFER GOOD MONDAY THROUGH THURSDAY ONLY.

ken's
we keep topping
ourselves.

McALLEN	PHARR	BROWNSVILLE
500 N. 10	1005 E. Hwy. 83	2489 Boca Chica
682-5581	787-8534	546-1614

The Strain And Pain Of Working Out



Staff Photo by RIGO ORDAZ

Above, although not getting as much attention as football or basketball, students participate in gymnastics and weightlifting because it is now very popular at Pan Am.



For Back To School An Eye Examination Is Suggested By Family Optical

WE OFFER

- Hard and soft contact lenses
- Sunglasses
- Fashion Eyewear

FAMILY OPTICAL

816 South Main
McAllen, Texas
687-7224

10% Discount to PAU Students

Shorties

A close 3-2 victory over the Lamar University soccer team Oct. 14 left the Broncs at a 2-2 record for the season.

Phil Engles bounced in the winning goal for Pan American as the Lamar goalie could not handle the ball. Arnulfo Garcia assisted Joe Blanco for one goal and Victor Perez tallied the other score.

The Texas Open chess tourney scheduled for November 25-26 is going to have cash prizes, totaling \$1,500. This is the biggest sum in Valley history according to Tony Vela, director of the University Center. It will be the first time the Texas Open chess tourney will be held south of Corpus Christi.

The tourney will be conducted at the PAU Ballroom. Entry fee is \$15 and each player must join the U.S. Chess Federation. It will cost \$8 along with \$3 for the Texas Chess Federation for rating purposes.

Other entries will include the top players from various Valley high schools plus chess and grand masters from Mexico. Vela said he is

scheduling a qualifying tourney for PAU students with the top five receiving free entries in the Texas Open tourney.

Anyone wishing to enter may mail his (or her) entries to Steve Alden at P.O. Box 4391, McAllen Texas, 78510. Entries may be picked up at the University Center.

Basketball season tickets are now on sale according to Jim McKone, sports information director. The tickets went on sale in late September. The price for season tickets is \$40 and anyone wishing to purchase season tickets should go by the gym and see Coach Bill Shirley, the athletic business manager, or call 381-2224.

When asked on the team's chances this year, McKone said, "the Broncs were a very good team with three returning letterman in 6'4" Jim Ed Holland, 6'7" Danny Salisbury, and 6'7" Rex Spain."

McKone would like to see the student body support the Broncs.

STEREO CLEARANCE HOUSE HAS LOWEST STEREO PRICES

Pioneer SX980 Receiver \$384.
Technics SL3300 Turntable \$120.
Akai CS702D Cassette \$125.

Our free Catalog has many more deals on major brands, even lower prices on our monthly specials sheet. Send now and find out how to buy current \$7.98 list lp's for \$3.69. Stereo Clearance House Dept. BL44 1029 Jacoby St., Johnstown, Pa. 15902. Phone Quotes 814-536-1611

PAN AMERICAN UNIVERSITY Golf Schedule Fall 1978

DATE	EVENT	PLACE
Oct. 17-21	New Mexico State Intercollegiate Invitational Golf Tournament	LasCruces, N.M.
Oct. 26-28	Bill Bass Intercollegiate Invitational Golf Tournament	Brownsville, Tx.
Nov. 6-8	Harvey Penick Intercollegiate Invitational Golf Tournament Sponsored by University of Texas	Austin, Tx.

FALCON'S HAIRSTYLING

phone for an appointment
383-9012
520 E. UNIVERSITY
EDINBURG

The Pan American

Weekly Student Newspaper

EDINBURG, TEXAS

THURSDAY, OCTOBER 26, 1978

Vol. XXVII No. 6

Officials Withdraw Request for \$14.7 Million Special Events Center

From wire service accounts

University officials here Thursday withdrew their request for consideration by the Coordinating Board, Texas College and University System of plans to construct a \$14.7 million special events center using ad valorem tax funds.

The ad valorem funding had been the subject of continuing litigation over legality.

Also, the University and board members agreed three other projects should be deferred pending resolution of the property tax law suit.

The Coordinating Board was expected to approve withdrawal and deferral requests at a quarterly meeting.

The board's Campus Planning Division staff had been prepared Friday to deny the board to deny for the events center, had University officials continued with application procedures for the project.

Campus Planning Committee Chairman Harold D. Herndon had told members of the panel Thursday Attorney General John Hill had issued an opinion Sept. 27 holding that stadiums and special event centers for universities could not be funded with valorem tax monies, regardless of the legality of use of property tax funds for other purposes.

A similar pending application for a sports complex by the University of Texas at Arlington was recommended sent back to UTA, and not considered further unless the university can come up with other means of funding.

The coordinating board staff also recommended deferral of PAU's plans for a \$2.1 million renovation of an administration annex, \$2.7 million conversion of an existing structure to an administration building, and \$231,643 for expansion of the University's main entrance and parking areas, according to Herndon, who added the recommendations were due to the ad valorem tax evaluation.

University President Ralph Schilling told the committee it was Pan American that was asking for the deferral.

"Well, then everybody wants it deferred," Herndon said. Pan American board of regents had approved the sports arena and renovations in June as part of Phase 111 multi-million dollar construction.

The arena, with estimated cost at over \$14 million, had been scheduled to open by the spring of next year. The University planned to locate it at the corner of Sugar Rd. and Schunior.

The arena is planned to hold 10,300 spectators and is

for building a money-making enterprise.

University officials acknowledged the coordinating board's decision was anticipated in light of the recent legal questions, so Schilling asked the plan be deferred.

The University has plans for a new four story humanities



Existing fieldhouse holds capacity 5,000 spectators

Staff Photo by RIGO ORDAZ

capable of housing several simultaneous sports activities, including circuses and rodeos.

The attorney general's office, in its September opinion said in effect that the University could not use construction funds

complex building--with a theatre-in-the-round; a building for its Inter-American Affairs program; new expanded physical education facilities and other support and educational facilities for the 1980's.

NEWSBITS

USWC to Host Reception

The United Social Workers and ISC will sponsor a benefit disco-dance for Rolando Gonzalez, a ten year-old leukemia victim. The dance will be tonight from 8-12 at the Newman Center, across from the women's dorm at PAU.

Music will be provided by Monty's Music Machine and admission price is \$1.50. There will be free beer and a dance contest with winners receiving cash prizes.

CAMP Elects Officers

College Assistance Migrant Program, has elected officers for the 1978-79 school year.

Officers are: Eddie Rodriguez, president; Armando Zapata, first vice-president; George Mata, second vice-president; Sylvia Salinas, secretary; Lupe Cavazos, treasurer; and Maribel Lopez, parliamentarian.

DZ's Announce Class

The 1978 fall pledges of the Theta Omicron chapter of Delta Zeta sorority received their Big Sisters Oct. 15 during a candlelight ceremony in their honor at the home of active members Trudy and Treacia Parrish.

Each pledge chose an active member to act as life-time big sister. The following pledges chose the following active Delta Zetas as big sister: Debbie Cordova to Polly Pawlik; Sylvana Cuellar to Velma Menchaca; Diana Cuevas to Nelda Villegas; Jamie Devine to Trudy Parrish; Raena Fix to Treacia Parrish; Alice Garza to Judi Flores; Anna Gonzalez to Nelda Villegas; Dorothy Lenig to Bob-

bie Stokes; Michelle Mendoza to Velma Menchaca; Debbie Munoz to Judi Flores; Yvonne Rodriguez to Maxine Rodriguez; and Sylvia Zamora to Ana Adame.

After the presentation ceremony, active members read a poem expressing sisterhood in Delta Zeta. The pledges then receive gifts from their new Delta Zeta big sister.

The Theta Omicron Chapter also recently elected officers for the current 1978 fall semester.

The 1978 fall pledge class officers are: Raena Fix, president; Diana Cuevas, vice-president; Sylvia Zamora, treasurer; Debbie Munoz, recording secretary; and Yvonne Rodriguez and Michelle Mendoza, activities committee co-chairmen.

APO Raises Funds

Alpha Phi Omega national service fraternity sponsor's bake sale Oct. 22 in McAllen. Money earned will be used to send delegates to national convention to be held in Nashville, Tenn., Dec. 27-30.

Tryouts Sunday for Cheerleaders

All students interested in trying out for basketball cheerleader should report to the PAU Field House in time to start tryouts at 3 p.m. Sunday, Oct. 29.

Several judges are being picked and they will select the 10 best candidates to represent PAU this basketball season.

The cheerleaders are still looking for a sponsor from the PAU faculty or administration. Anyone interested in spon-

soring the cheerleaders this year should contact Jim McKone, the acting sponsor, in the athletic department at 381-2228.

At an earlier meeting, 21 prospective cheerleaders voted to limit each candidate to one cheer, either individually or with one partner.

Deadline Friday for Grad Applicants

Pan American University graduate students having 12-18 graduate hours must apply for admission to candidacy and for oral examinations by Oct. 27, according to Dr. Bill Reeves, dean of the School of Education.

Students in their last semester of work must apply for and take the final written comprehensive examination if they plan to graduate at the end of the semester, Reeves said.

The final written examination will be given Nov. 18. Students should contact their school department head for the time and place.

Students also will be notified of the time and place of oral examinations.

The applications should be made with the appropriate school of education department head, Reeves said.

Synchronized swimmers will meet every Thursday during activity period at the Physical Education Complex swimming pool. Anyone interested is invited to attend or call Susie Houston, 381-3501.

QUOTES



Gonzalez



Kopke

He says there is room for improvement in the cafeteria; Traffic and Security officers give tickets and only tickets but don't insure the protection of one's car; and teachers here lack quality. Some even know less than the students, he added.

James Koepke, 22, is a senior from Mission, majoring in general business.

What improvements, if any, do you feel the University needs?

"To begin with, the most important improvement could be in the quality of our teachers. So far, the comments about school are on the building expansion at a tremendous rate, but, they need to start slowing building and focus on the quality of teachers. We need more young teachers; they stand for quality."

"The food in the cafeteria is bad. Some days all I can stomach is the ice cream."

"Traffic and Security would do a lot better if they tried a new image with their cops and with their work-study students. All you ever see is security with their ticket pads. But, as for items stolen out of your car, there is no protection."

What "good" qualities does Pan Am have?

"The academic is very good. Only in some organizations, students are allowed to participate so much that grades go down and these students are still allowed to stay in the organization."

"Another good quality is having a campus nurse and doctor. Even though students cannot afford to get sick, the facilities are here."

"Professors are too lenient, they need to have stricter standards. But, improvements are very difficult here at Pan Am since it's a commuter university."

Pat Gonzalez, 20, from McAllen, is a sophomore majoring in elementary education.

What improvements, if any, do you feel the university needs?

"I am an elementary education major and I think the standards should be stricter. Anyone can be a teacher. And some of the material is not college level."

"Students should take advantage of the facilities offered by the Learning Assistance Center. It's here, and it's free."

"Students have a lot of apathy, but, there are not enough activities. We do have activities like the carnival and Bronco Days. The other problem is not enough students participate. Maybe they don't advertise enough."

What "good" qualities does Pan Am have?

"The campus is pretty. I like the architecture. And the space between each building is a short distance."

"The bilingual education department is good. Since I am a bilingual minor, I like the Spanish department and the bilingual classes."

"What I really enjoy is the basketball games. They bring in such a big crowd and there is so much action and excitement."

Classified Ads

TEACHERS--Hundreds of openings Foreign & Domestic Teachers, Box 1063, Vancouver, WA. 98666

Addressers Wanted Immediately! Work at home--no experience necessary--excellent pay. Write American Service, 8350 Park Lane, Suite 127, Dallas, TX 75231

DIAMOND ENGAGEMENT & WEDDING RINGS: Up to 50 per cent discount to students, faculty, & staff. Example, 1/4 ct. \$150, 1/2 ct. \$350, 1 ct. \$995, by buying direct from leading diamond cutter. For color catalog send \$1 to SMA Diamond Importers, Inc., Box 42, Fanwood, N.J. 07023 (indicate name of school) of call (212) 682-3390 for location of showroom nearest you.

Classified Rate is 20 cents a line with a minimum of \$1 for each insertion, payable in advance. Bring ad copy to The Pan American, Emilia Hall 100. Deadline is Friday noon. To estimate cost count 25 letters and spaces to a line.

COMMENTARY

To The Editor:

What in the world will the administrative officials of Pan American think of next?

The very idea of having to impose a survey to find out "why" this semester's registration has dropped by the thousands simply boggles my mind. Surely anyone with sense can see the reason; and believe me, the administration need look no further than their own backyard to find out who's responsible.

In the four years that I have attended Pan Am, I have witnessed little effort by the school to communicate with the needs of its students. In fact, it seems to me that the university is more concerned with beautifying itself externally in a sense so that some bureaucrat looking in can declare, "This school must really have the students' interest in mind. Let's extend them some more financial aid."

This most certainly is not the way to help those first-year collegians who are having trouble adjusting

to the new academic environment. To make the adaption requires a lot of planning and will power on their part, and without the help and encouragement no less than 70-80 per cent make it to the next year. In my opinion, it's up to Pan Am to actively promote this help.

So stop trying to place the entire blame for registration failure on the students. After all, if the greater majority of the student body is apathetic (which we most certainly are) it's because the school has activated no spirit for them to associate with. Shape up Pan Am or put up with the many students who are shipping out!

Responsively yours,
Linda Soto
Biology Pre-Med Major, McAllen

We are not saying we would like the pleasure of your acquaintance (WE DON'T!!), but rather, are informing you that at least four men are enjoying our company without having had to solicit our acquaintance.

We hope you don't find anyone, (for their sake), but rather learn to take people at face value without having to fill your specifications other than those of trust and understanding.

Ready to Meet You On Our Terms,

Capricorn
Aquarius
Gemini
Scorpio
Names withheld on request

Open letter to:
Robert Robles
P.O. Box 331
Weslaco, TX

Dear Robert,

We girls who are 5'4" and under take offense at your ad in this week's Pan American.

We are just as capable and friendly as any girl whose feet are 60 inches away from their hairdos.

The "we," we are speaking of are a "Capricorn 5'2", age 24; and "Aquarius 5'2 1/2", age 21; a "Gemini 5'3", age 22; and a "Scorpio 5'4", age 23.

UCPC Film Calendar

Nov. 5

Lina Wertmuller's **A Night Full Of Rain** with Giancarlo Giannini and Candice Bergen. Wertmuller's latest film--first ever in English.

Nov. 12

Ingmar Bergman's **Cries And Whispers** with Liv Ullmann, Harriet Andersson Ingrid Thulin, Karen Sylwan, Erland Josephson

Cries And Whispers confronts the depths of the feminine psyche and the realities of the human condition with a shattering intensity only Bergman can create. The film probes and dissects the lives of four women with the sensitivity of a skilled surgeon, exposing all their passions, their anxieties, their frustrations, and their insecurities.

Awards:
1972 New York Film Critics--Best Picture, Director, Writer, Original Screenplay 1972 National Society of Film Critics--Best Screenplay, Cinematography 1972 Academy Award--Best Cinematography.

Nov. 19

George Lucas' **THX 1138** with Robert Duvall, Donald Pleasance and don Pedro Colley. **THX-138** is a man living in a subterranean culture controlled and tyrannized by computer. Humans are kept subservient to machines and the new order by a steady diet of "down" drugs which keeps them from feeling and relating. THX 1138 is a rebel. He manages to reduce his intake of drugs, regains his humanity and revolts against the system

Nov. 26

Mel Brook's **Blazing Saddles** with Mel Brooks, Cleavon Little and Gene Wilder. **Blazing Saddles**, a spoof on the American tradition--the Western Movie. Cleavon Little as the rail-road worker promoted to candidate for hanging of Sheriff of the town of Rockridge.

Nov. 3

Federico Fellini's **Amarcord** with Magali Noel, Bruno Zanin, and Pupella Maggio. **Amarcord** is full of tales, some romantic, some slapstick, some bawdy. Set in a small town in Fascist Italy it combines the concerns of Fellini's early youth with neorealistic style.

Awards: 1974 Academy Award--Best Foreign Film; 1974 New York Film Critics Circle--Best Film, Best Director

Dec. 10

Francois Truffaut's **Small Change** with Chantel Mercier, Geory Desmouceaux Philippe Goldman Christine Pelle, and Jean-Francois Stevenin. **Small Change** constructs an intricate and graceful mosaic around the lives of several children in the small provincial town of Thiers. France Truffaut concludes that children are not simply miniature adults but have their own particular fears and loves, existing in "a state of grace."

All films are scheduled for screening at the L.R.C. Media Theatre at 8.

Admission: students \$1; faculty and staff \$1.50; and gen. audience \$2.



Editor's Note:

The Pan American welcomes and will print letters from readers. All letters must be signed and must include the writer's address and telephone number. Because of limited space, letters should not exceed 200 words. The Pan American reserves the right to edit.

The Pan American

News Editor	Juan Castillo
Staff Reporter	Leticia Diaz
Staff Reporter	Cynthia Garcia
Staff Reporter	Ben Trevino
Desk Assistants	Rosalinda Alvarez
	Linda Brown
	Oscar Garza
	Terry Welty
Sports Editor	Rigo Ordaz
Sports	George Villarreal
Staff Photographer	Phyllis Driskill
Staff Photographer	Joe Mangin
Advertising Manager	Harry Quin
Circulation Manager	
Adviser	

The Pan American student newspaper at Pan American University published by Student Publications, Emilia Hall 100, phone 381 2541, at Edinburg Texas 78549, each Thursday except during examinations and holidays under Dr. Mike Nevarez, vice president for student and university affairs, and Harry Quin, adviser. Views presented are those of students and do not necessarily reflect those of the university administration. Subscription price by mail \$3 a year, \$1.50 per semester. Contributions and letters should be submitted by Friday before publication.

Special Events Associated with Conference

The four-day Oct. 30 - Nov. 1, first Pan American Conference on Rehabilitation and Special Education will not only bring together people from both sides of the border, including Central and South America, but will provide a variety of social events as well.

A film festival will be open to conference participants, Pan American University faculty and students, as well as interested community members. The festival will run all four days of the conference in the experimental classroom of the Learning Resource Center here.

On Halloween, from 8 p.m. to midnight, a Halloween masquerade ball will be held in the Hidalgo Room of the Echo Motor Hotel in Edinburg, with music by "Orquestra Universal." The ball will be open to the community.

Tickets can be purchased at the Echo, or ticket information and reservations can be obtained by calling the Office of the Division for Inter-American Affairs, 381-2133. A banquet in Reynosa and a "pachanga" at the Edinburg Municipal golf course are among other activities planned for the conference time period.

Distinguished guests and leaders in the fields of rehabilitation and special education will share ideas and expertise with the several hundred participants that are expected. More than topics dealing with both physical and mental aspects of handicapping conditions will be presented.

The first Pan American Conference on Rehabilitation and Special Education, sponsored by the Department of Inter-American Affairs and International Education, will feature special late afternoon sessions designed for local professionals, students, parents, and educators who are not able to participate in the full day sessions. Four full days of sessions relating to prevention, identification, diagnosis and treatment of handicapping conditions are scheduled.

Many local agencies and institutions are involved in, and supportive of the goals of the conference. Agency representatives and materials will be on display in the LRC as a part of the conference program.

Special arrangements have been made for PAU students who are enrolled in courses relating to the topic areas, to at-

tend sessions with approval of their professors. Honorary conference chairman is Dr. Arnulfo S. Martinez, vice-president of the Division for Inter-American Affairs and International Education. The conference coordinating committee consists of Dr. Leopoldo Chow Chong, director, Hospital Ejidal, Reynosa; Joan De Rooy, director of consultation and education, Topical Texas Center for Mental Health and Mental Retardation, Edinburg; Luis Gonzalez, school administrator, Hidalgo ISD; Wes Huerta, district supervisor, Texas Rehabilitation Commission, McAllen; Dr. Arthur O. Linskey, associate professor, Pan Am Department of School Services, Edinburg; and Ann Washington, coordinator of elementary guidance and appraisal, McAllen ISD.

Participation by interested Valley residents is encouraged. For more information on any facet of the conference, call 381-2133 or 2131, or contact any of the committee members.



Committee members of the first Pan American Conference on Rehabilitation and Special Education recently met to discuss final conference plans. Pic-

tured are, left to right, Dr. Arthur Linskey, Dr. Chow Chong, Dr. Arnulfo Martinez, Marci Mitchell, Ken Brock and Yolanda Ramirez. Staff Photo by RIGO ORDAZ

Reading Conference Begins Friday

A two-day symposium for the 25th annual Pan American Reading Conference begins Friday.

The conference is co-sponsored by the Texas Association for the Improvement of Reading and Pan American.

Guest speakers will be Dr. Robert B. Ruddell, professor of education at the University of California at Berkeley, and Dr. Jeanette Veatch, professor emeritus at Arizona State University at Tempe.

Dr. Ruddell will speak on "Minimal Competencies in Reading for Better or for Worse," "Literacy and

Lovin' - Means and Ends" and "The Web of Comprehension - a Visit with Charlotte and Wilber."

Dr. Veatch's topics include "The Secret of Success: Individualizing Your Program" and "Turning Children on to Read."

Consultations on "Resolving the Bilingual Dilemma Through the Use of Writing and Oral Language" and "Integrating Communication Skills - Making Beautiful Noise," are also scheduled.

The conference also includes group presentations, exhibits, coffee breaks and luncheon. Pre-registrations are being accepted.

Mail Accumulation Getting Heavy

The accumulation of mail in student organization mail boxes in the University Center is getting so heavy, Director Tony Vela is concerned about it.

Every approved student organization on campus has a mail box, Vela said, but some of the new officers who took over probably do not know about the boxes.

Members of the organiza-

tion may go to the equipment check-out counter on the second floor of the University Center and ask for the mail.

ATTENTION TEACHERS

High School

Reading Specialist (\$14,500 - if fully certified)

Junior High School

1-English major fully certified as teacher with hours in Reading (\$11,000) Will accept Secondary or Elementary Certified teachers with English as Area of Specialization.

3-Math Teachers (\$13,000 each) Will accept fully certified High School Math majors or Elementary Teachers with 18 hours in Math.

2- Counselors (\$15,000-each)

Elementary Teachers (2-Bi-lingual Teachers) (State Minimum)

Positions available for immediate filling but qualified Fall 1978 graduates will be considered for some of the teaching positions mentioned above in the Crystal City Independent School District, 805 East Crockett St. Crystal City, Texas 78839. Write or call the Personnel Director (Phone: Area Code (512) 374-2353 between 8:00 a.m. and 4:00 p.m., Monday through Friday.

SROES Sportique

2110 North Tenth Shopping Center
McAllen, Texas 682-7151



**PREGNANT
NEED
HELP?**

CALL
Pregnancy
Information
San Antonio
828-9316

SOUTHWESTERN BELL

Has immediate openings in the Marketing Department for Communications Consultants. Office based in Harlingen, serving business customers throughout the Valley.

Professional Training Provided
Attractive Salary, Fringe Benefits, Challenge, Opportunity for Advancement.

Previous selling or public contact experience preferred, but not necessary.

Call collect to Employment Office 512-425-8176 between 8-10 A.M., and 1-3 P.M., Monday thru Friday.

SOUTHWESTERN BELL

An Equal Opportunity Employer



THE

FIRST STATE

BANK

&

TRUST CO.

Of Edinburg

Welcomes

Staff

and

Students

to

Pan American

University

STUDENTS PLEASE
RENEW I.D. FOR NO
SERVICE CHARGE ON
CHECKING ACCOUNT



FIRST STATE BANK
& TRUST COMPANY
OF EDINBURG
100 East Cano
Edinburg, Texas 78539

MEMBER FDIC



BEAT THE CHRISTMAS RUSH WITH TOY LAY-AWAYS!

TV FAMILY ENTERTAINMENT AT 25% SAVINGS

FOR ONE OR TWO 4-IN-1 TV GAME TV Scoreboard® by Radio Shack®

29⁹⁵
Reg. 39⁹⁵
SAVE \$10

SQUASH TARGET
HOCKEY TENNIS
PRACTICE SKEET

21⁹⁵
Reg. 29⁹⁵
SAVE \$8

SQUASH PRACTICE
TENNIS HOCKEY

Mom! Dad! Compete with the kids at hockey, tennis, squash, target, skeet, or single-player practice. With pistol. Req. 6 "AA" batts. or AC adapter. 60-3061

Have year round fun with hockey, tennis, squash or practice. Hand-held remote control, more. Req. 6 "AA" batts. or AC adapter. 60-3060

FOR THOSE 3 AND OLDER ON YOUR HOLIDAY LIST

BATTERY OPERATED

Truck **5⁹⁹**

8-wheeler Big-Rig delivers fun for small trucker in family. 11 1/2" long. Req. 2 "C" batts. 60-2374

Each Includes 6 Control Cams

STRAIGHT OVAL FIGURE 8
SQUARE ZIG-ZAG CIRCLE

Race Car **4⁹⁹**

Formula-1 has sleek, low style of latest racers! Drop-in cams control course. 11" long. Req. 2 "C" batts. 60-2376

Fire Engine **5⁹⁹**

For YOUR little fire chief! Includes extension ladder, flashing red light. 11" long. Req. 2 "C" batts. 60-2375

SOFT'N CUDDLY "PETTABLE PORTABLES" by Radio Shack

A. Pekingese
B. White Terrier
C. Raccoon
D. Black Poodle
E. Country Mouse
F. Brown Spaniel

LOW AS 10⁹⁵

Let your small ones take these furry animals to bed! AM radios tucked inside with outside controls. Takes 9V battery.

PORSCHE GRAND PRIX RACER

12⁹⁵

- Runs Indoors/Outdoors
- Hand-Held Radio Control

Does forward, reverse and turn by remote control. Red backup lights. Antenna disconnects. Req. 2 9V, 4 "AA" batts. For racers 5 and up. 60-3008

CHARGE IT (MOST STORES)

TREASURE HUNTER DETECTOR

Reg. 19⁹⁵ **14⁸⁸**

SAVE 25%

Find buried metal treasures up to 6" below soil! Also finds studs, nails in walls. Req. 9V batt. 60-3003

FIREMAN'S HELMET

6⁹⁹

- Foam Padded
- Adjustable Strap

Authentic replica for your junior fire fighter! Siren, revolving beacon. Req. 2 "C" batts. 60-3005

WALKIE-TALKIE WITH AM RADIO

by Archer®

12⁹⁵ Ea.

Listen to music or hold 2-way conversation! Code key. Req. 9V batt. 60-4003

7⁹⁵ Ea. 14⁹⁵ Pr.

MICRO-SIZED WALKIE-TALKIE

Palm-sized, up to 1/4-mile range. Req. 9V batt. 60-4002

AT RADIO SHACK: THE DISCOUNT COMES OFF BEFORE THE PRICE GOES ON™!

LAS PALMAS SHOPPING CENTER

383-4051

A DIVISION OF TANDY CORPORATION

403 E. UNIVERSITY DR.

EDINBURG

Most items also available at Radio Shack Dealers. Look for this sign in your neighborhood.

PRICES MAY VARY AT INDIVIDUAL STORES

Radio Shack®

The biggest name in little computers™.



COMPLETE SYSTEM
Cat. #26-1501



CHARGE IT
(MOST STORES)

Here's a \$599 Christmas gift that just possibly makes more sense than anything you've ever given anyone (at any price)!

Never, EVER until now could you have walked into a store to buy a computer "off the shelf." To take anywhere. To put to work (or play) immediately. Never until the advent of Radio Shack's breakthrough "personal computer," the TRS-80™. Start dreaming... of the student, the businessman, the person on your gift list who has a NEED TO KNOW about today's complex electronic world. Or the NEED TO IMPROVE in aptitude, in information handling, in numbers manipulation, in time saving, in personal achievement, TRS-80 is the dream come true, the gift of a lifetime that couldn't have happened until Christmas, 1978.

For those who think ahead...

TRS-80 is a complete made-by-Radio Shack system including 12" video monitor, 53-key professional keyboard, micro-processor computer, cassette tape recorder, 232-page owner's manual and two games on a cassette for practice and fun. TRS-80 is expandable in power, memory, computer language and acceptance of printers and add-ons.

For those who care enough...

An educator thanks us for "making possible the tapping of human innovation and creativity on an unprecedented scale." A parent says his TRS-80 "is of significant value to our family and to the education of our child." We have kid, grownup, professional and amateur customers. Each with a dream. Christmas is almost here. Radio Shack is ready TODAY!

383-4051

LAS PALMAS SHOPPING CENTER

403 E. UNIVERSITY DR.

EDINBURG

Most items also available at Radio Shack Dealers. Look for this sign in your neighborhood.



PRICES MAY VARY AT INDIVIDUAL STORES

Facilities Unused by Students

By LETICIA DIAZ
Staff Reporter

The long awaited review of results of a survey conducted last spring by Business Administration School officials here at Pan American, has shown that business majors failed in using facilities and services available to them in job-searching.

"Helping Students in Job Search," was the title of the survey organized by Dr. Tony Ortega, associate professor and division head. Also assisting in the organization were Alpha Kappa Psi fraternity research committee members, Maria Elva

Salinas, chairman; Anna Pirone and Annette Denbo.

The survey was administered in April last year to all seniors and some graduates and juniors. Tabulated results were returned this summer.

Dr. Ortega, not content with the results of the survey, has concluded that of the 1,800 students enrolled in the School of Business, "all lack the key word 'motivation' in using the University Placement Services."

"The greater task," he said "is to change the perceptions of the students so that they will comprehend the true

value of the placement services that the University offers."

The University Placement office, headed by Romulo Martinez, and the School of Business, has seen the need to develop a joint program to motivate students from all schools to seek and employ career placement assistance.

The School of Business has already begun an effort to motivate majors in their school. According to Dr. Ortega, the program will begin with freshman students. This program will tell the students about services the administration is offering.

A video tape, made by Dr. R.N. McMichael, Dr.

Ortega, and by the Learning Resource Center Technical Branch, will be shown to these students. The tape contains several interviews of highly successful business men and women in the Valley that have been graduated from PAU in the past years.

Sophomore students in business will go deeper into the meaning of their first job. Juniors and senior sessions will be more detailed.

"It is important to know that since the results of the survey are in, the School of Business has taken action," Dr. Ortega said. "And, we do know we have to build it each year. The majority will benefit."




Art student Adolfo Martinez works at his craft. Works by Martinez are presently on display in a special exhibit in the LRC lobby. The art show continues through Friday.



ALMA'S
Hi-Fashion Salon
"His n' Hers"

422 1/2 E. University Edinburg
383-9035



Attention Athletes
Order your personalized college ring today.

T & G Enterprises
2201 N. 10th
McAllen, Texas
887-5442

All Sports
Every Position



RUSSELL'S

701 N. Clossner
Edinburg, Texas
383-2051

Art Supplies · 10% Off Oils, Paints, Acrylics,
Watercolor Canvas Boards, Stretch Canvas

Hobby & Craft Items
10% Off All
Macrame Cord

Over 40 Booths Entered In Great Pumpkin Carnival

You can "dart-a-date," go through the "animal house," or take a ride on the "love boat" at the 1978 Carnival of the Great Pumpkin, to be held here Oct. 28, at the LA Building parking lot.

Nearly 40 booths have been entered in this year's carnival, and according to Juan Garza of the UCPC Special Events Committee,

about four booth openings are left. Organizations can still enter a booth "if they hustle," he said.

Booths will be arranged in a circular design which will allow each booth to receive more exposure, according to Garza.

Some of the other carnival booths include: cake walk, hayride, puppet show, jail booth, mud slide, dunking booth, sponge toss, coke ringers, baseball throw, squirt gun rental, football throw and beat-a-car. A wide variety of foods will also be sold.

A horror film, "Horror Hospital," will be an extra feature. The film will be shown in the Science building auditorium at 8 p.m. and 11 p.m. Admission price will be \$1.

"American Peddlers," will provide music for carnival-goers. The band will perform in the center of the carnival, which will have a disco-type arrangement.

KRIO radio's mobile unit will broadcast from the carnival and there will be prizes given away.

Garza expects 3,000 people will attend the carnival this year, compared to the near 2,000 in attendance last year.

A "more efficient" \$1,500 electrical power system was purchased by UCPC to be used at the carnival, he added.

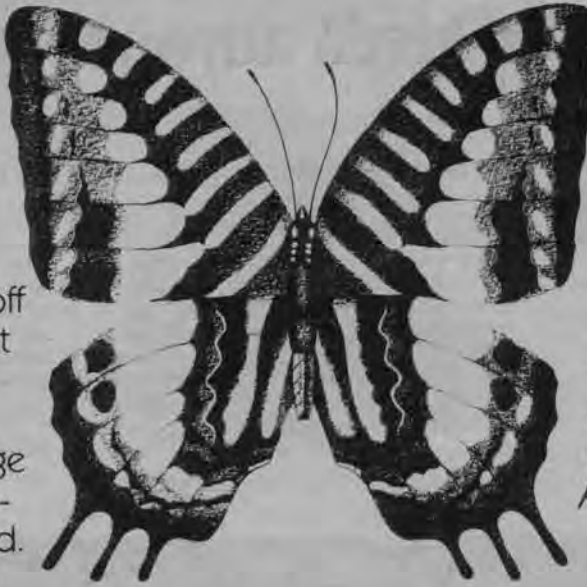
The special events committee is still seeking people to help with organization of the carnival.

NEXT ISSUE—

So you're going to college to be a lepidopterist.

Will You Have A Job When You Graduate?

You like catching, mounting and cataloging butterflies. Is there any reason for you to believe your career will take off after you graduate? In the next issue of *Insider*—the free supplement to your college newspaper from Ford—college degrees and careers they prepare you for will be discussed. And while you're enjoying



your *Insider*, check out the sharp new Fords for '79. Like the New Breed of Mustang with dramatic new sports car styling. And Fiesta—Wundercar. Ford's fun little import. You can bet Ford has it just about everything.

See if your college education and career hopes are working together, read the next *Insider*. And check out the new lineup of '79 Fords. They'll both put you on the right road.

Look for *Insider*—Ford's continuing series of college newspaper supplements.



FORD DIVISION

STEREO CLEARANCE HOUSE HAS LOWEST STEREO PRICES

Pioneer SX980 Receiver \$384.
Technics SL3300 Turntable \$120.
Akai CS702D Cassette \$125.

Our free Catalog has many more deals on major brands, even lower prices on our monthly specials sheet. Send now and find out how to buy current \$7.98 list lp's for \$3.69. Stereo Clearance House Dept. BL44 1029 Jacoby St., Johnstown, Pa. 15902. Phone Quotes 814-536-1611

Pan American

SPORTS

Oh Man, My Muscles Ache

Dribblers Continue Working Hard

Dead legs and sore bodies characterize many basketball players after the first week of Bronc basketball practice. Under the direction of Bill White, a squad of 13 players are expected to guide the fortunes this season.

Among the 13 members, 10 players are new to the Pan American style of basketball. The three remaining are veterans, Rex Spain, Danny Salisbury and Jim Ed Holland.

"This is like the ballclub we had in 1977 in youth, but look at the fine team we

had in 1978," White said. The Broncs went from a 17-9 record in 1977 to 22-4 in 1978, but the roundballers were snuffed from the NCAA and NIT tournaments.

Conditioning is the main cause this early in the season and the Broncs do all of their running in the gym in order to familiarize themselves with court. "There have been a few injuries; but the problem for the boys is that they have dead legs," White said. He went on to say, "However, there are some who are in pretty good shape."

As in the past, another tough schedule is on top for the roundballers. For instance, the Broncs play the University of Houston, southwest Conference tournament champion, in a tournament and a home game.

The regular season opens with the University of Hawaii making its first trip to the Rio Grande Valley to challenge the Broncs on Nov. 28.

Last season will be hard to duplicate because of the lack of experience on the squad this year, but the Broncs plan to make that up in quickness and excitement.



Staff Photo by RIGO ORDAZ

Basketball has started off with 10 newcomers and only three veterans. Head Coach Bill White has to replace four starters with some of those new players.



PATO
MEXICAN FOODS

WHITE FLOUR PATOS

Try'em - You'll love em.

For faster service call order in.

McAllen:
Corner of 23rd & Pécán
682-3176
AND
HWY. 83 AT 12TH ST.
687-8269

Edinburg:
Across from PAU
383-0725

Mission:
Hwy. 83 & Bryan Rd.
585-4545

Opening Soon
In Harlingen

SPOTBURGER

We still believe in old fashioned prices and quality service. Once you've tasted our hamburgers and fries, you'll agree.

Call in your orders at: 383-9093

9:00 - 9:30 p.m.

319 E. Cano
Edinburg



UNIVERSITY
BAR-B-QUE

**NOW SERVING
BREAKFAST...**

Flour Tacos
Sliced Brisket
Sausage

Mon-Fri — 7am-2pm
Sat — 7 am-4 pm

1101 E. University
Edinburg
Phone - 383-9190

A Brief Look At...

Gymnastics

Peggy Morgan and Rose Ann Olivarez led the women's gymnastics team of Pan American University in finishing best in a dual meet against Southwest Texas State University. The visitors won but several of the PAU gymnasts finished well. Morgan took second in

Class II floor exercises. Olivarez gained four seconds and a third in Class III. Cindy Jasso and Sofia Leal also gained seconds for PAU.

Soccer

Pan Am and Sam Houston State will kick off the Division II South Cham-

ampionship Tournament of the Texas Intercollegiate Soccer League. Host Texas A&I will face Lamar University in Saturday's second game at 4 p.m. to meet for the championship. Sunday's winner advances to the next playoff step against the Division II North winner.

Third Annual Event

Basketball Clinic Set For Nov. 18

Three basketball coaches, all now coaching in San Antonio but with widely different backgrounds, will serve as the clinic staff on Saturday, Nov. 18, for the third annual Bronc Basketball Clinic at Pan American University.

All basketball coaches in South Texas, both men and women coaches of boys and girls teams, have been invited to attend the one-day clinic.

Athletic director Bill White of Pan American University instituted this clinic in 1976. The clinic attracted more than 100 persons last November.

Bass, who is assistant coach, has experience coaching at all levels. He started his career at Cromwell High in

Oklahoma. He also has coached Oklahoma Baptist and Texas Tech, plus four pro teams—Denver, Miami, Memphis and the Spurs—and has served as a general manager.

Karl played for the University of North Carolina and was a UNC All-American on teams that won seven tournaments. He played for the Spurs until

bad knees forced him onto the bench as an assistant coach at mid-season last year.

Cortez has enjoyed tremendous success at Central Catholic High. He serves on a committee of the National Association of Basketball Coaches.

The clinic costs \$8.00, including lunch. Kelly Bass at 381-2225 has the details.



TACO D-LITE
MEXICAN FOOD

DINING
IN A SOUTH
OF THE BORDER
ATMOSPHERE

1012 S. Clossner
Edinburg, Texas

Also Drive Up Window For
Fast Go Orders

383-8361

KEN'S PIZZAFREEA!

Buy one,
get one free.

ken's
we keep topping
ourselves.

two for one

Clip this coupon, redeem at any participating Ken's Pizza Parlor, and receive a **FREE** pizza when you buy another of equal value.

Expires November 9, 1978
OFFER GOOD MONDAY THROUGH THURSDAY ONLY.

ken's
we keep topping
ourselves.

McALLEN	PHARR	BROWNSVILLE
500 N. 10	1005 E. Hwy. 83	2489 Boca Chica
682-5581	787-8534	546-1614

Spanish-Speaking Students Failing To Maintain Spanish

The Spanish-speaking persons in the Rio Grande Valley someday cease to speak Spanish? Many other language groups in the United States have failed to maintain their language beyond a generation or two, and it is a legitimate question whether the same process is affecting the Spanish-speaking population in the Valley.

Jon Amastae, acting director of the Pan Am Language and Linguistics Research Center, has found in a survey that was part of the Center's investigation of bilingualism, there is evidence that the Spanish-speaking Pan Am students are failing to maintain Spanish.

The survey indicated that 53.2 per cent of the respondents thought the younger generations were moving away from Spanish.

A majority of Spanish speakers and non Spanish operators alike thought that a Spanish accent in English hinders social success and that a Spanish accent in English also impedes finding a job, Amastae found.

In addition, the Spanish speakers rated themselves low in many Spanish skills, but especially in Spanish literary skills "since Spanish speaking students have, for the most part, received their education in English."

"This inequality," Amastae notes, "in all skill levels for the two languages, taken together with the differing prestige levels, may be considered an indication that the bilingual situation under consideration is not a stable one, but a transitional one in which much of the population is moving away from Spanish toward English."

Amastae emphasizes, however, the bilingual situation in the lower Rio Grande Valley of Texas is much more stable and complex than it appears at first glance.

The survey indicated Spanish was the first language and the home language for the vast majority of the respondents. The survey indicated, however, the more education and higher the income level of the father has, the more likely the respondent was to speak English first or to use English at

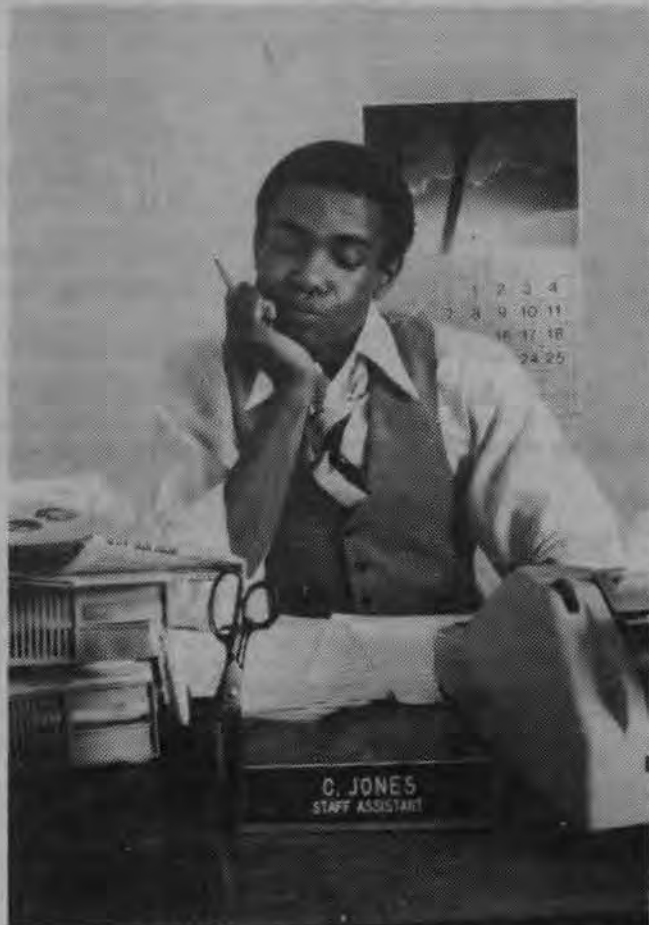
home.

The trend is not simple. Amastae found, since there appears to be another shift to reemphasize Spanish as upwardly mobile Spanish speakers pass through the middle class and reach the higher levels of income and occupation. Amastae noted this finding apparently contradicts common views of economic and social acculturation in the border area.

Other factors contributing to the maintenance of Spanish in the area are the continuing influx of Spanish speaking people, economic ties with Mexico and the fact non-Spanish speaking persons had a higher appreciation of Spanish than previous surveys and "common lore" admit.

Amastae concluded the survey showed no total orientation toward Spanish, but neither did it show an overwhelming orientation toward English. "Speakers show a shift away from total use of Spanish but there is no corresponding total shift toward English but toward a more stable balance of both languages."

With your degree, you can either wait for responsibility or...assume it.



There are a lot of good minds coming out of colleges and universities. And every year, the competition gets tougher for the good jobs—jobs with responsibility.

But, as a Naval Officer, you can assume immediate responsibility and leadership: a position that offers you an opportunity to put your skills and education to use in a job that will make the most of what you have to offer, while doing something for your country, too.

The job isn't easy, but if you're a self-motivated person, you can go as high as your ambitions and talent will take you. And you don't have to wait a long time to get there. We'll also start you off at a salary comparable to most corporations.



But a Navy commission also means benefits unrivaled in the civilian job market: 30 days paid vacation, low cost Servicemen's Group Life Insurance and free medical and dental care. And you still have access to the same leisure time activities you now enjoy.

So, don't settle for less than you're worth. Contact your College Placement Office to find out when a Navy representative will be on campus or send your resume to: Navy Officer Program, Code 312 (T208), P.O. Box 2000, Pelham Manor, N.Y. 10803.

In the Navy, you're valuable and we're ready to prove it. Call Navy toll-free 800-841-8000. (In Georgia, 800-342-5855.)

... or call your local Navy representative 512-341-0224

NAVY. IT'S NOT JUST A JOB, IT'S AN ADVENTURE.

UNIVERSITY EVENTS CALENDAR

Oct. 27
7:45 a.m.-4:30 p.m. GED testing; UC 306-306A
12-1:30 p.m. T.A.I.R. Luncheon; Ballroom
12-4 p.m. UCPC Chess Tournament; UC 307-307A

Oct. 28
8-11 a.m. UCPC Film; SB1
12-1:30 p.m. TAIR Luncheon; Ballroom
8-12 a.m. UCPC special event; LA Building parking lot

Oct. 29
2-3 p.m. Phi Kappa Tah (Flag Football); Field
4-6 p.m. Ladies of Camelot; UC 306
6:30-8 p.m. APO; UC 305-305A

Oct. 30
10 a.m.-6 p.m. Inter-American Affairs International Conference; Ballroom
4:30-6 p.m. Drama Dept.; UC 307A. ISNA bake sale; NB
5-9 p.m. DZ's; UC 307
6:30-8 p.m. PKT; Music Lounge
6:30-9 p.m. Kappa Sigma meeting; UC 306A. Phi Kappas Theta; UC 306
6:30-10 p.m. K.D.'s; UC 305-305A
7-9 p.m. DZ's pledges; UC 307A

Oct. 31
10 a.m.-6 p.m. Inter-American Affairs Conference; Ballroom
10:25-11:25 a.m. Intersarsity; UC 305A. El Sol; UC 307
10:25-11:35 a.m. College Republicans; UC 307A. APO; UC 305. Vets; UC 306
5-7 p.m. Ladies of Camelot; UC 306-306A

Nov. 1
8 a.m.-5 p.m. Social Work Program; UC 306-306A
10-6 p.m. Inter-American Affairs Conference; Ballroom
11-12:30 p.m. Dr. Gilberto de los Santos; UC 307-307A
6-10 p.m. IK; UC 305, 305A
6:30-10:30 p.m. Kappa Delta; UC 307-307A

Nov. 2
10 a.m.-6 p.m. Inter-American Affairs Conference; Ballroom
10:25-11:25 a.m. ISA; LA 105
10:25-11:30 a.m. TKES; UC 306A. Interfeat Council; UC 306. Employment Council; UC 305A
10:25-11:35 a.m. College Republicans; UC 307A
10:30-11:30 a.m. Democrats; LA 115
5-7 p.m. Ladies of Camelot; UC 306-306A
5-9:30 p.m. KD's; UC 305A

Nov. 3
7:45-4:15 p.m. GED testing; UC 306-306A
10-6 p.m. Inter-American Affairs Conference; Ballroom

Ask Pete

Dear Pete,
Is there any way the female students and faculty interested in parties can get together?

Dear Lillian,
I don't know how to answer this in any way except to throw this question out to the students - How about it girls? If you're interested in getting together call 381-3347 or call the Counseling Center (381-3121) and we'll contact the interested party.