

11-3-2021

Looking for Crumbs in the Obesity Forest: Anti-obesity Interventions and Obesity-Associated Cardiometabolic Traits in the Mexican Population. History and Systematic Review With Meta-Analyses

Esperanza M. Garcia-Oropesa

Yoscelina E. Martinez-Lopez

Sonia María Ruiz-Cejudo

José Darío Martínez-Ezquerro

Alvaro Diaz-Badillo

The University of Texas Rio Grande Valley

See next page for additional authors

Follow this and additional works at: https://scholarworks.utrgv.edu/som_pub



Part of the [Diseases Commons](#)

Recommended Citation

Garcia-Oropesa, E. M., Martinez-Lopez, Y. E., Ruiz-Cejudo, S. M., Martínez-Ezquerro, J. D., Diaz-Badillo, A., Ramirez-Pfeiffer, C., Bustamante-Fuentes, A., Lopez-Sosa, E. B., Moctezuma-Chavez, O. O., Nava-Gonzalez, E. J., Perales-Torres, A. L., Perez-Navarro, L. M., Rosas-Diaz, M., Carter, K., Tapia, B., & Lopez-Alvarenga, J. C. (2021). Looking for Crumbs in the Obesity Forest: Anti-obesity Interventions and Obesity-Associated Cardiometabolic Traits in the Mexican Population. History and Systematic Review With Meta-Analyses. *Frontiers in medicine*, 8, 665023. <https://doi.org/10.3389/fmed.2021.665023>

This Article is brought to you for free and open access by the School of Medicine at ScholarWorks @ UTRGV. It has been accepted for inclusion in School of Medicine Publications and Presentations by an authorized administrator of ScholarWorks @ UTRGV. For more information, please contact justin.white@utrgv.edu, william.flores01@utrgv.edu.

Authors

Esperanza M. Garcia-Oropesa, Yoscelina E. Martinez-Lopez, Sonia María Ruiz-Cejudo, José Darío Martínez-Ezquerro, Alvaro Diaz-Badillo, Carlos Ramirez-Pfeiffer, Alejandra Bustamante-Fuentes, Elena B. Lopez-Sosa, Oscar O. Moctezuma-Chavez, Edna J. Nava-Gonzalez, Adriana L. Perales-Torres, Lucia M. Perez-Navarro, Marisol Rosas-Diaz, Kathleen V. Carter, Beatriz Tapia, and Juan C. Lopez-Alvarenga



Looking for Crumbs in the Obesity Forest: Anti-obesity Interventions and Obesity-Associated Cardiometabolic Traits in the Mexican Population. History and Systematic Review With Meta-Analyses

OPEN ACCESS

Edited by:

Belinda Reiningger,
University of Texas Health Science
Center at Houston, United States

Reviewed by:

Nicolas Musi,
The University of Texas Health Science
Center at San Antonio, United States
Liliana Munoz,
National Institute of Medical Science
and Nutrition Salvador
Zubiran, Mexico
Nayely Garibay,
General Hospital of Mexico, Mexico

*Correspondence:

Juan C. Lopez-Alvarenga
juan.lopezalvarenga@utrgv.edu

†These authors have contributed
equally to this work

Specialty section:

This article was submitted to
Family Medicine and Primary Care,
a section of the journal
Frontiers in Medicine

Received: 06 February 2021

Accepted: 24 September 2021

Published: 03 November 2021

Citation:

Garcia-Oropesa EM,
Martinez-Lopez YE, Ruiz-Cejudo A,
Martinez-Ezquerro JD, Diaz-Badillo A,
Ramirez-Pfeiffer C,
Bustamante-Fuentes A,
Lopez-Sosa EB,
Moctezuma-Chavez OO,
Nava-Gonzalez EJ, Perales-Torres AL,
Perez-Navarro LM, Rosas-Diaz M,
Carter K, Tapia B and
Lopez-Alvarenga JC (2021) Looking
for Crumbs in the Obesity Forest:
Anti-obesity Interventions and
Obesity-Associated Cardiometabolic
Traits in the Mexican Population.
History and Systematic Review With
Meta-Analyses.
Front. Med. 8:665023.
doi: 10.3389/fmed.2021.665023

Esperanza M. Garcia-Oropesa^{1†}, **Yoscelina E. Martinez-Lopez**^{2†},
Sonia María Ruiz-Cejudo^{3,4}, **José Darío Martínez-Ezquerro**^{3,5}, **Alvaro Diaz-Badillo**^{6,7},
Carlos Ramirez-Pfeiffer⁷, **Alejandra Bustamante-Fuentes**⁸, **Elena B. Lopez-Sosa**⁹,
Oscar O. Moctezuma-Chavez¹⁰, **Edna J. Nava-Gonzalez**¹¹, **Adriana L. Perales-Torres**¹²,
Lucia M. Perez-Navarro¹³, **Marisol Rosas-Diaz**¹, **Kathleen Carter**¹⁴, **Beatriz Tapia**¹⁵ and
Juan C. Lopez-Alvarenga^{6,7*}

¹ Laboratorio de Biología Molecular, Unidad Académica Multidisciplinaria Reynosa Aztlán (UAMRA), Universidad Autónoma de Tamaulipas, Reynosa, Mexico, ² Programa de Doctorado en Ciencias Médicas y de la Salud, Universidad Nacional Autónoma de México (UNAM), Mexico City, Mexico, ³ Unidad de Investigación Epidemiológica y en Servicios de Salud, Área Envejecimiento (UIESSAE), Centro Médico Nacional Siglo XXI, Instituto Mexicano del Seguro Social (IMSS), Mexico City, Mexico, ⁴ Programa de Maestría y Doctorado en Música, Cognición Musical, Universidad Nacional Autónoma de México (UNAM), Mexico City, Mexico, ⁵ Centro de Ciencias de la Complejidad (C3), Universidad Nacional Autónoma de México (UNAM), Mexico City, Mexico, ⁶ Department of Human Genetics, School of Medicine, The University of Texas Rio Grande Valley, Edinburg, TX, United States, ⁷ Programa de Maestría en Salud Pública, Universidad México-Americana del Norte (UMAN), Reynosa, Mexico, ⁸ Escuela de Medicina, Universidad Panamericana, Mexico City, Mexico, ⁹ Cirugía General, Hospital Español, Mexico City, Mexico, ¹⁰ Asociación Odontológica Mexicana para la Enseñanza y la Investigación, Mexico City, Mexico, ¹¹ Facultad de Salud Pública y Nutrición, Universidad Autónoma de Nuevo León, Monterrey, Mexico, ¹² Laboratorio de Bromatología, Unidad Académica Multidisciplinaria Reynosa Aztlán (UAMRA), Universidad Autónoma de Tamaulipas Reynosa-Aztlán, Reynosa, Mexico, ¹³ Servicio de Nefrología, Dirección de Investigación, Hospital General de México Dr. Eduardo Liceaga, Mexico City, Mexico, ¹⁴ Research and Education Library of the School of Medicine, Education & Academic Affairs, University of Texas Rio Grande Valley, Edinburg, TX, United States, ¹⁵ Office of Faculty Affairs and Department of Pediatrics, School of Medicine, The University of Texas Rio Grande Valley, Harlingen, TX, United States

Mexicans and Mexican Americans share culture, genetic background, and predisposition for chronic complications associated with obesity and diabetes making imperative efficacious treatments and prevention. Obesity has been treated for centuries focused-on weight loss while other treatments on associated conditions like gout, diabetes (T2D), and hypertriglyceridemia. To date, there is no systematic review that synthesizes the origin of obesity clinics in Mexico and the efforts to investigate treatments for obesity tested by randomized clinical trials (RCT). We conducted systematic searches in Pubmed, Scopus, and Web of Science to retrieve anti-obesity RCT through 2019 and without an inferior temporal limit. The systematic review included RCT of anti-obesity treatments in the Mexican adult population, covering alternative medicine, pharmacological, nutritional, behavioral, and surgical interventions reporting metabolism-associated traits such as

BMI, weight, waist circumference, triglycerides, glucose, among others. Only the studies with at least 3 months of treatment were included in the meta-analyses in order to reduce placebo effects. We found 634 entries, after removal of duplicates and screening the studies based on eligibility criteria, we analyzed 43 national, and 2 multinational-collaborative studies. Most of the national studies had small sample sizes, and the implemented strategies do not have replications in the population. The nutrition/behavioral interventions were difficult to blind, and most studies have medium-to-high risk of bias. Nutritional/behavioral interventions and medications showed effects on BMI, waist circumference, and blood pressure. Simple measures like pure water instead of sweet beverages decrease triglycerides and systolic blood pressure. Dark chocolate showed the highest effect for BMI and high blood pressure, and treatment with insulin increased weight in those with T2D. The study of obesity in Mexico has been on-going for more than four decades, the interest on RCT just increased until this millennium, but with small sample sizes and lack of replication. The interventions affect different cardiometabolic associated traits, which should be analyzed in detail in the population living near the Mexico-U.S. border; therefore, bi-national collaboration is desirable to disentangle the cultural effects on this population's treatment response.

Systematic Review Registration: https://www.crd.york.ac.uk/prospero/display_record.php?ID=CRD42020221436, identifier: CRD42020221436.

Keywords: anti-obesity agents, abdominal obesity metabolic syndrome, systematic review and meta-analysis, randomized clinical trials, type 2 diabetes

INTRODUCTION

Obesity in Mexico: A Story Never Told

The history of obesity as a clinical entity started with the Obesity Clinic established in 1959 at the Instituto Nacional de Nutrición Salvador Zubirán, by Dr. Luis Domenge, Dr. Carmen Ramos, and Dr. Jorge Gonzalez-Barranco. They, as expert physicians, considered obesity as an aesthetic but also a medical problem. The so-called epidemiologic transition, from infectious to chronic degenerative diseases, moved slowly from the 70s and 80s derived from an evolution of treating obesity as a medical problem, promoted by Dr. Gonzalez-Barranco based on scientific research and clinical trials with medications in the 90s.

The first attempt to classify obesity was using the Metropolitan Life Insurance Company (MLIC) which developed standard tables for “ideal” (MLIC 1942) and then “desirable” weight (MLIC 1959) based on the observed association of body weight with mortality. These standard tables were the platform for developing the current definition for underweight, normal, overweight, and obese individuals based on the body mass index (BMI) cut-offs (1).

The use of BMI as a reliable measurement started with the NHANES from 1988 to 2016. These studies demonstrated the age-adjusted prevalence of obesity in the United States increased progressively: from 22.9 to 39.6 percent. The main issue of concern in regard to BMI involves the growing obesity epidemic and the increasing population with high BMI numbers (2).

Since 1993 a series of population surveys have been conducted systematically in Mexico using the BMI. The first National Survey on Chronic Diseases (ENEC from Spanish: Encuesta Nacional de Enfermedades Crónicas) highlighted obesity as a national public health problem. The prevalence of obesity in Mexico has increased substantially since the 1980s, and currently affects over 30% of the adult population (3). The epidemiological transition from undernourishment and infectious diseases to emergent chronic diseases were well-documented in the ENEC. A sequel of undernourishment in presence of an obesogenic environment is homeorhesis as an adaptive response to undernourishment. Homeorhesis or homeorhesis comes from the Greek homós, “equal;” and rhéxis, “violent rupture;” and refers to regulatory mechanisms that allow the body to change from one homeostatic, stable condition to another in a programmed fashion, e.g., growth during childhood or the onset of lactation (4). A combination of genetic and socioeconomic strata were conditions affecting stature. From North to South Mexico the ENEC data show a decrease in stature by expenses of the lower body segment (**Figure 1**), the sitting height is almost similar across regions. The stature can modify body composition despite BMI (5) and can be an indicator of socioeconomic inequality (6).

The First Obesity meeting in Mexico with the NAASO and the Pan-American Endocrine Meetings were held in Cancun in 1997. These meetings were a landmark achievement for the study of obesity in Mexico with the first NOM (Mexican Official Norm) for obesity management, published

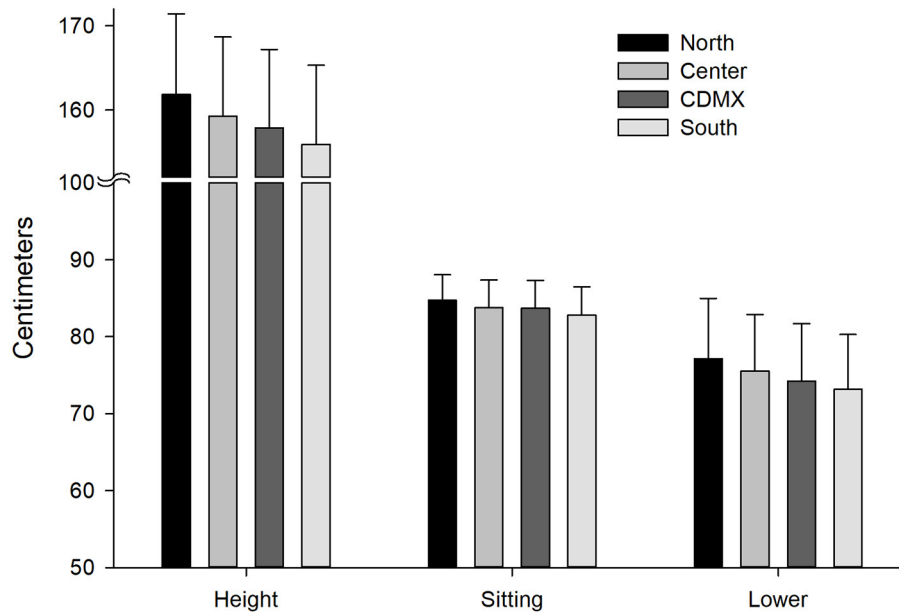


FIGURE 1 | Height measurement standing up, sitting, and the lower body segment. From North to South, height is lower at the expenses of the lower body segment ($p < 0.0001$, adjusted by Bonferroni for all regions). Sitting height reflects the upper body segment and shows small differences between regions. Means and standard deviations. Data obtained from the ENEC 1993. CDMX, Mexico City; Sitting, sitting height; Lower, Lower segment of the body (Height-sitting height).

in 1998 (7). Since this new millennium, there has been a spread of interest in obesity in other hospitals and Mexican states. Close collaboration with the Diabetes Division at the University of Texas San Antonio Health Science Center (UTSAHSC) and the South Texas Diabetes and Obesity Institute (STDOI) at the UTRGV has been done since then.

In the United States, Mexican Americans are considered part of the Hispanic Americans or Latino group. The U.S.-Mexico border represents this minority with active immigration, and a rapid increase in population. One of the Healthy People 2020 goals was to improve the health of all groups, requiring an understanding of the Hispanic culture, and health care needs for health promotion (8).

Obesity in Mexican Americans and Mexican Immigration

Mexican Americans are spread all over the United States, the National Health and Nutrition Examination Surveys 1988–1994 showed children aged 4 to 17 years who were born abroad had significantly lower prevalence of overweight / obesity compared to Mexican American children born in the U.S. (PR = 0.77, 95% CI: 0.61, 0.96). In contrast, during 2005–2014, there was no evidence of a difference in overweight / obesity at birth (PR = 0.95; 95% CI: 0.84, 1.07) and no differences with newer immigrants (<5 years living in the U.S.) compared with those born in the U.S. (9).

Regarding the diet quality, Yoshida et al. (10) reported age differences in diet quality influenced by acculturation (customary adoption of a new culture): older Mexican Americans had higher

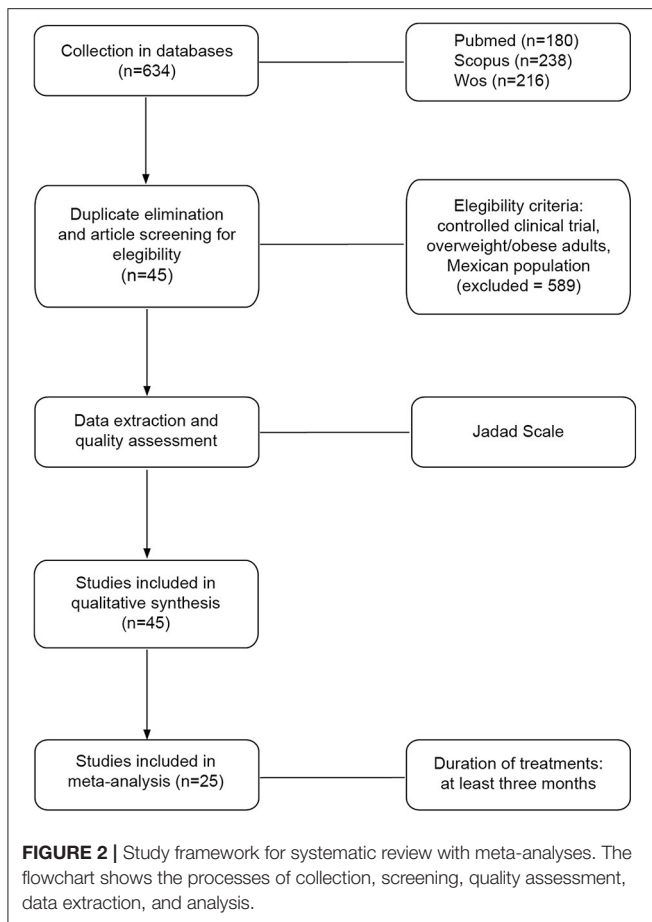
scores in Healthy Eating Index (HEI) indicating a better diet quality. For vegetables, fruits, and proteins, middle-aged adults had higher scores compared to young adults. Concerning HEI components, a 1-unit increase of acculturation was associated with 10 to 20% lower odds of attaining better scores for vegetables, fruits, dairy, sodium, and empty calories in almost all ages.

Medication Research and Current Anti-obesity Guidelines

Some pharmacokinetics determinants of many drugs depend on the body size; for instance, obesity modifies the volume of distribution, and drug clearance, probably due to increased activity of cytochrome P450 2E1 and possible modifications on tubular reabsorption (11).

However, not only biology can explain the variability of losing weight, other factors are associated with the feasibility of following medical recommendations affected by cultural environment. The importance of lifestyle was defined in early times of weight loss intervention but was debated by the use of medication.

Numerous international published guidelines for anti-obesity treatment consider the local disparities and cultural differences of each geographic region. The management of obesity relies on diverse medical specialists, health professionals and government decisions. Primary prevention of obesity is fundamental and requires policies for favoring spaces for physical activity and a healthy environment. Harmonization on treatment cannot be global but can help to tailor weight



loss treatments, and metabolic improvement for prevention of complications (12, 13).

Since 2000 guidelines from the former North American Association for Study of Obesity (nowadays The Obesity Society—TOS) and the NIH Working Group were mainly based on dietary therapy, physical activity, and behavioral therapy, and guided on the appropriate use of pharmacological and surgical interventions. The weight loss recommendation was for patients with BMI >30 and those with BMI between 25 and ≤30 with two or more complications. They suggested that pharmacotherapy should be used only in the context of a treatment program with diet, physical activity, and behavioral therapy. Once the guide was published, only two drugs were approved for weight loss: sibutramine and orlistat (12).

The European guidelines also made emphasis on lifestyle modifications including nutrition and physical activity. The goals are risk reduction (even with modest weight loss i.e., 5–10% of initial body weight), attention on waist circumference and management of complications. They increase the number of drug treatments for obesity approved by FDA (Food and Drug Administration) and EMA (European Medicines Agency): orlistat, lorcaserin (only for FDA), phentermine/topiramate (only for FDA), bupropion/naltrexone and liraglutide. They recommend drug discontinuation if the patient does not reach

5% loss of initial weight after 12 weeks of treatment. This guide discusses metabolic surgery focusing on metabolic effects as primary outcomes instead being limited to weight loss (13).

The Endocrine Society in 2015 published the guideline for pharmacological management of obesity (14) implementing diet, exercise, and behavioral modification and suggesting drugs may amplify adherence to behavior change, especially for patients with a clinical history of failure in non-medication treatments.

The nutritional health status in Mexico was affected by government policies, the first supermarket chains selling American processed food in Mexico started in the 1940s. The government eliminated the subsidy of corn tortillas in 1999 with the objective to improve competitiveness in the global economy. This action loaded in the closure of local tortilla factories not able to compete. The transition epidemiology from infectious to chronic diseases was rampant in this period. In 2008 the import tariffs on maize, bean, sugar, and mill were eliminated. In response to the nutritional problems and increase in obesity, in 2010 the Ministries of Public Education and of Health published the General Guidelines for Dispensing or Distribution of Foods and Beverages at School Food Establishments (SFEs). After a mass media campaign to reduce consumption of high caloric food, the Mexican congress, in 2014, excised a tax on high energy dense food (15).

The aim of our study was to perform a systematic review with meta-analyses to synthesize and evaluate the evidence of anti-obesity interventions on BMI and other cardiometabolic associated traits performed in Mexican adults with overweight and obesity. These treatments include pharmaceutical, behavioral, surgical, nutritional, and alternative interventions designed as controlled clinical trials, to compare results within and between interventions.

METHODS

Protocol Registration and Search Strategy

The protocol was registered in PROSPERO on 11/17/2020 and assigned the registry number CRD42020221436 (16).

The PICO Structure is as follows:

Participants/population: Mexican adults classified as overweight or obese by WHO criteria included in controlled clinical trials for anti-obesity interventions and randomly allocated to treatment groups.

Interventions: Approaches conducted in the Mexican population to treat obesity, including alternative medicine, pharmacological, nutritional, behavioral, and surgical interventions reporting BMI as.

Comparisons: Within and between studies comparison of anti-obesity interventions on BMI, in addition to cardiometabolic associated traits, in which control groups were placebo or active treatments. Studies with at least 3 months of treatment were included in the meta-analyses in order to reduce the placebo effect.

Outcomes: Biometric markers associated with obesity such as BMI, waist circumference, triglycerides, glucose, HDL-C, diastolic, and systolic pressure.

TABLE 1 | Characteristics of the analyzed interventions ($n = 58$).

Category	N	%	References
Study design			
A. Drugs			
A1. Non-diabetic patients	17 (* § <<)	29.3	(19–33)
A2. Diabetic patients	11 (*)	19	(34–40)
B. Nutrition and exercise			
B1. Food and supplements	11 (* <<)	19	(25, 41–49)
B2. Diet	6 (* <<)	10.3	(45, 50–53)
B3. Behavioral	1 (*)	1.7	(54)
B4. Exercise	1 (*)	1.7	(55)
B5. Multi-component	7 (* <<)	12.1	(45, 46, 55–57)
B6. Alternative	2 (<<)	3.4	(58–60)
C. Surgery			
C1. Cx	1 (§)	1.7	(61)
C2. Cx-diet	1 (*)	1.7	(62)
Gender†			
Male	5	11.1	(20, 23, 49, 55, 59)
Female	9	20	(24, 25, 45, 46, 52, 54, 56, 58, 62)
Both	31	68.9	(19, 21, 22, 26–44, 47–51, 53, 54, 57, 60, 61, 63)
Age†			
Youth (18–35 years old)	11	24.4	(19, 41, 42, 44–46, 49, 53, 62)
Young adults (36–45 years old)	21	46.7	(20, 22–24, 28–32, 34, 37, 38, 43, 47, 48, 51, 55–58, 63)
Older adults (46 or more years)	13	28.9	(19, 21, 35–37, 39, 40, 52, 54, 60, 61)
City†			
México City	17	37.8	(24, 27, 30–33, 35, 36, 38, 40, 49, 54, 57, 58, 60, 61)
Guadalajara	13	28.9	(19, 20, 26, 28, 34, 37, 39, 42–44, 47, 51, 62)
Cd. Madero	3	6.7	(21, 22, 53)
Cuernavaca	2	4.4	(50, 63)
Durango	2	4.4	(52, 56)
Querétaro	2	4.4	(45, 46)
Tijuana	2	4.4	(41, 59)
León	1	2.2	(55)
Monterrey	1	2.2	(29)
San Luis Potosí	1	2.2	(25)
Villahermosa	1	2.2	(48)

Duration of study: (<<) < 3 months, (*) ≥ 3 months to 9 months, (§) ≥ 12 months. †The frequency represents the number from 45 studies.

The search strategies included Pubmed, Scopus, and Web of Science databases to obtain published literature up to 2019 to include randomized controlled clinical trials for obesity conducted in Mexico. To identify additional studies

and gray literature, we contacted Medical Societies such as the Endocrinology Society from Mexico and researchers from academic institutions such as UNAM. For inclusion in the meta-analysis, all interventions had to be conducted for at least 3 months—as a strategy to control for placebo effects—and report both baseline and final BMI. The query was focused on all interventions with overweight or obese participants who underwent weight loss treatment. We included nutritional/behavioral treatments, with knowledge that many of these interventions cannot be blinded, therefore we assessed the possibility of bias using the Grading of Recommendations Assessment, Development and Evaluation (GRADE) approach (17). Medications, alternative medicine and surgical interventions were included in the review finished in December 2020.

An example of a search strategy performed in Pubmed without time period limits:

[(“obesity”[MeSH Terms] OR “obesity”[All Fields]) AND (“therapy”[Subheading] OR “therapy”[All Fields] OR “treatment”[All Fields] OR “therapeutics”[MeSH Terms] OR “therapeutics”[All Fields])] AND (“mexico”[MeSH Terms] OR “mexico”[All Fields]) AND Clinical Trial[ptyp].

Eligibility Criteria

The systematic review included Mexican adult overweight or obese participants in controlled clinical trials subjected to pharmaceutical, behavioral, surgical, nutritional, or alternative interventions. Weight loss was the primary or secondary outcome, besides, we included cardiometabolic traits outcomes when available. We included studies published in English or Spanish at any time, conducted in Mexican centers and multicentric international studies with Mexican participants. For inclusion in the meta-analysis, treatments had to be conducted for at least 3 months and indicate baseline and final BMI. When available, we analyzed obesity-related cardiometabolic components (i.e., serum concentration of glucose, HDL-C, triglycerides, systolic and diastolic blood pressure, and waist circumference). We followed these criteria for the articles’ peer-screening and conducted a third final group review to resolve disagreements applying an online Delphi method due to confinement in times of COVID-19 (18). We contacted the corresponding authors to clarify doubts and obtain additional information when necessary.

Studies Selection

We recovered 634 studies from three databases: Pubmed ($n = 180$), Scopus ($n = 238$), and Web of Science ($n = 216$). After eliminating duplicate studies and applying the eligibility criteria, 589 studies were eliminated. The flux of the analyzed studies is described in **Figure 2**. Of the 45 included studies data were extracted using the Cochrane tool and quality assessed with the Jadad scale. There were 45 studies included in the qualitative synthesis and 25 in the meta-analysis. There were 55 interventions in the studies included for the qualitative synthesis: 25 with medications,

TABLE 2 | Descriptive characteristics and assessment of nutrition/behavioral interventions.**Nutritional and behavioral intervention**

Author State Year	Participants	Sample size	Intervention implemented/ control	Number of participants (basal, final)	Treatment duration	Aims/Outcomes	Significance difference between groups
Moran (57) Mexico City 1997	Male and Female Intervention: 39 ± 15; Control: 38 ± 10 years old. BMI ≥30 Kg/m ²	36	Intervention: diet + 750 mg ursodeoxycholic acid (AUD) + fiber placebo Control: diet + 15 g Plantago psyllium (pp) + AUD placebo	Intervention: 18, 18 Control: 18, 18	2 months	Primary: prevention of gallstone disease (GD) in obese subjects undergoing a weight-reduction diet. Cholesterol crystals in duodenal bile were used as surrogate of GD risk	Yes: Treated individuals had less presence of cholesterol crystals
Rodriguez- Hernandez (56) Durango 2009	Female 45.4 ± 10.4 years old BMI ≥30 Kg/m ²	105	Intervention: Cognitive behavioral treatment + Low carb diet or low- fat diet Control: Non cognitive behavioral treatment	Intervention: 55, 52 Control: 50, 50	6 months	Primary: weight loss Secondary: Depression and anxiety, fasting glucose and triglycerides	Yes: CBT-LF had significant differences were observed in waist circumference, weight, and BMI in the and significantly decreased body fat, weight, BMI and triglycerides compared with C-LF group
Ble-Castillo (48) Tabasco 2010	Male and Female 51.7 ± 5.6 years old BMI ≥30 Kg/m ² T2DM	30	Intervention: Native Banana Starch Control: Soy Milk	Intervention: 15, 14 Control: 15, 14	2 months	Primary: Body weight and insulin sensitivity Secondary: Cholesterol; HDL; Triglycerides; Diastolic blood pressure; Systolic blood pressure; Waist to hip ratio; Calcium; Phosphates	Yes: Body weight, BMI, waist to hip ratio and triglycerides significantly reduced No: No significant changes in glucose and HbA1c. A decrease in serum triglycerides in control group. No changes were observed on calcium, phosphate and hematological markers such as white blood cells, platelets and other indexes
Rodriguez- Hernandez (52) Durango 2011	Female Intervention: 46.3 ± 9.1; Control: 45 ± 9.1 years old BMI ≥30 Kg/m ² NAFLD	59	Intervention: low carbs diet (LCD) Control: low fat diet (LFD)	Intervention: 31, 28 Control: 28, 26	6 months	Primary: To evaluate decrease aminotransferase levels.	No: No significant differences in anthropometric and biochemical characteristics between groups
Rosado (46) Queretaro 2011	Female 34 ± 6 years old BMI ≥30 Kg/m ²	139	Intervention 1: Low fat milk Intervention 2: Low fat milk with added micronutrients Control: No milk intake	Intervention 1: 46, 33 Intervention 2: 46, 37 Control: 47, 31	4 months	Primary: To evaluate anthropometrics, body composition, blood glucose levels, lipids profile, C-reactive protein, and blood pressure	Yes: LFM+M group lost significantly more weight than control group. BMI in the LFM+M group was significantly greater than LFM group members and Control group. Body fat among LFM+M group members was significantly higher than LFM and control group No: No differences between groups in glucose level, blood lipid profile, blood pressure, or C-reactive protein level
Madero (53) Mexico City 2011	Male and female Intervention 1: 37.56 ± 1.14; Intervention 2: 40.15 ± 1.01 BMI > 25 Kg/m ²	131	Intervention 1: Low fructose diet Intervention 2: Moderate natural fructose diet	Intervention 1: 65, 65 Intervention 2: 66, 66	1.5 months	Primary: weight loss Secondary: Blood pressure, lipid profile, serum glucose, insulin resistance, uric acid, soluble intercellular adhesion molecule-1, and quality of life scores	Yes: Significant weight loss compared with baseline in both treatments, but higher in the MNF group. Significant improvement in secondary outcomes in both treatments

(Continued)

TABLE 2 | Continued

Nutritional and behavioral intervention

Author State Year	Participants	Sample size	Intervention implemented/ control	Number of participants (basal, final)	Treatment duration	Aims/Outcomes	Significance difference between groups
Tovar (45) Queretaro 2012	Female Intervention 1: 34.62 ± 7.4; Intervention 2: 33.17 ± 7.63; Intervention 3: 32.58 ± 8.13; Control: 33.39 ± 8.72 years old. BMI ≥ 25 Kg/m ²	144	Intervention 1: Partial meal replacement (PMR) + Inulin (INU) Intervention 2: PMR Intervention 3: INU Control: No additional treatment	Intervention 1: 36, 23 Intervention 2: 36, 28 Intervention 3: 36, 30 Control: 36, 29	3 months	Primary: weight reduction, blood lipids and micronutrients	Yes: all groups significantly reduced BMI, weight, waist and hip circumference. Subjects in PMR+INU, PMR and INU significantly decreased triglycerides Fiber intake increased in PMR+INU and INU groups. In PMR and PMR+INU groups some minerals and vitamins intakes increased compared with INU and control groups
Martinez-Abundis (44) Jalisco 2013	Male and female Intervention: 35.4 ± 4.3; Control: 35.4 ± 3.8 years old. BMI 30–39.9 Kg/m ²	14	Intervention: Avocado Soybean Unsaponifiable (ASU) Control: Placebo	Intervention: 7, 7 Control: 7, 7	3 months	Primary: Glucose, triglycerides, HDL-C, leptin, C-reactive protein (CRP), TNF α , adiponectin, erythrocytes, fatty acids and metabolic syndrome	No: Without significant differences between groups before and after the two treatments in hs-CRP, IL-6, insulin secretion, and insulin sensitivity
Perichart-Perera (54) Mexico City 2014	Postmenopausal Female Intervention: 54.81 ± 6.38; Control: 52.65 ± 6.35 years old. BMI ≥ 25 Kg/m ² MetS	118	Intervention: Behavioral therapy Control: Structured hypocaloric diet	Intervention: 55, 55 Control: 63, 63	6 months	Primary: metabolic syndrome Secondary: weight, waist circumference, systolic and diastolic blood pressure, cholesterol, triglycerides, body fat mass	Yes: Higher reduction in MetS prevalence in BT group. Significant decrease in weight and waist circumference in both groups. Control group significantly decreased systolic and diastolic blood pressure, and fat mass measurements. Control group decrease total cholesterol and triglyceride
Hernandez-Cordero (63) Morelos 2014	Women Intervention: 33.5 ± 6.7; Control: 33.3 ± 6.7 years old. BMI ≥ 25 Kg/m ² MetS	240	Intervention: Water and Education provision (WEP) Control: Education Provision (EP)	Intervention: 120, 102 Control: 120, 87	9 months	Primary: to determine if replacing SSBs with water affects plasma triglycerides (TGs), weight, and other cardiometabolic factors	No: No effect on plasma TGs, weight, and other cardiometabolic risks in the ITT analysis
Macias-Cervantes (55) Guanajuato 2015	Male Intervention 1: 40 ± 4.8; Intervention 2: 43.5 ± 7.1; Intervention 3: 44.3 ± 5.3 years old. BMI ≥ 25 Kg/m ²	43	Intervention 1: Low AGE diet Intervention 2: Exercise with regular food intake Intervention 3: Exercise with low AGE diet	Intervention 1: 14 Intervention 2: 14 Intervention 3: 15	3 months	Primary: Identify the effect of a low advanced glycation end product (AGEs) diet, exercise, and a combination of both on circulating AGE levels as well as on plasma lipids and anthropometric parameters. Secondary: blood pressure, beats per minute, Diet-Cal, fasting blood glucose, HDL-C, heart rate, LDL-Cholesterol, VO ₂ (oxygen consumption)	Yes: in the group with low AGE diet were differences in weight, BMI, waist circumference, serum AGEs Group with normal diet + exercise: weight, BMI, waist circumference, heart rate max and VO ₂ max In group with low AGE diet +exercise: weight, BMI, waist, triglycerides, HDL, LDL, serum AGEs, and VO ₂ max
Romero-Prado (51) Jalisco 2015	Male and female 42.2 ± 7.5 years old BMI 25–34.9 Kg/m ² Hypertension according to WHO criteria	110	Intervention: Flavonoids Diet + Anti-hypertensive therapy (Captopril/ Telmisartan)	Intervention; 40, 40 Control: 70, 39	6 months	Primary: blood pressure, lipid profile, obesity and inflammation	Yes: SBP, DBP, cholesterol and triglycerides, BMI, waist circumference and CRP showed differences at 3 and 6 months in the intervention group. HDL only when comparing baseline and 6 months No: Leptin levels

(Continued)

TABLE 2 | Continued

Nutritional and behavioral intervention							
Author State Year	Participants	Sample size	Intervention implemented/ control	Number of participants (basal, final)	Treatment duration	Aims/Outcomes	Significance difference between groups
Campos-Nonato (50) Morelos 2017	Male and female 47.4 ± 11.5 years old BMI 25–45 Kg/m ² MetS	118	Control: Anti-hypertensive therapy (captopril/ Telmisartan) Intervention: High-Protein Diet Control: Standard-Protein Diet	Intervention: 59,59 Control: 59, 46	6 months	Primary: Evaluate the effect of increased protein intake on weight loss in adults with MetS Secondary: (all measured in baseline, 3 and 6 months): fasting blood glucose, fasting insulin, hemoglobin A1c, total cholesterol, high-density lipoprotein (HDL) cholesterol, very-low-density lipoprotein (VLDL) cholesterol, triglycerides, C-reactive protein, creatinine, blood urea nitrogen, alanine aminotransferase, aspartate aminotransferase, and gamma-glutamyl transferase	Yes: Decreased weight, % of abdominal fat Differences observed in both groups: waist circumference, Systolic blood pressure, fasting blood glucose, insulin, HOMA index, triglycerides, total cholesterol, VLDL cholesterol. The group SDP, presented a difference in HDL and direct bilirubin
Leyva-Soto (41) Baja California 2018	Male and female Intervention: 23.8 ± 3.4; Control: 23.6 ± 3.5 years old BMI > 29 Kg/m ² MetS	92	Intervention: Dark chocolate Control: Milk Chocolate	Intervention: 42, 42 Control: 50, 42	6 months	Primary: Evaluate the genoprotective effect of consuming a flavonoids-rich chocolate Secondary: Biochemical parameters related to cardiovascular risk and metabolic syndrome: changes in BMI, waist circumference, Fasting plasma glucose, HOMA, HbA1c, Systolic blood pressure, Diastolic blood pressure, Cholesterol total, triglyceride, Nuclear Abnormalities in Buccal Epithelial Cells	Yes: abnormalities of the nuclei in the buccal epithelial cells decreases significantly (<2%) after 6 months of daily consumption of 2 g of dark chocolate. Decreased BMI, waist circumference, Total cholesterol, LDL Cholesterol, triglycerides, HOMA-IR, fasting plasma glucose, systolic and diastolic blood pressure in the group commercial dark chocolate
Padilla-Camberos (42) Jalisco 2018	Male and female 20-55 years old BMI > 30 Kg/m ²	28	Intervention: Agave fructan Control: Maltodextrin	Intervention: 14, 14 Control: 14, 14	3 months	Primary: Effects of agave fructans on weight control, lipid profile, and physical tolerability. Weight, hip, waist, hip waist index, total body fat (%), glucose, serum insulin, total cholesterol, (HDL) and (LDL) cholesterol, triglycerides Secondary: Safety assessments were performed Weight, hip, waist, hip waist index, total body fat (%), glucose, serum insulin, total cholesterol, HDL and LDL cholesterol, triglycerides	Yes: BMI and triglycerides of the Agave fructans treated group was reduced significantly from the baseline to the final measurements. Hip and waist circumference decreased in both groups No: Glucose values

AUD: ursodeoxycholic acid; PP: *Plantago psyllium*; GD: gallstone disease; CBT-LF: Cognitive behavioral treatment with low-fat diet; C-LF: control group with low-fat diet; BMI: Body mass index; TG: Triglycerides; SBP: Systolic Blood Pressure; DBP: Diastolic Blood Pressure; A1c: OGlycated hemoglobin; HDL-c: High density lipoprotein cholesterol; LDL-c: 0Low density lipoproteins cholesterol; VLDL-c: Very low density lipoprotein cholesterol; CRP: C-reactive protein; LFM: Low fat milk; LFM+M: Low fat milk with added micronutrients; IR: insulin resistance; MNF: Moderate natural fructose diet; PMR: Partial meal replacement; INU: Inulin; ASU: Avocado Soybean Unsaponifiable; TNF- α : TumorNecrosis0Factor0alpha; hs-CRP: High-sensitivity C-reactive Protein; IL-6: Interleukin-6; MetS: Metabolic0syndrome; BT: Behavioral therapy; WEP: Water and Education provision; EP: Education Provision; SSBs: Sugar-Sweetened Beverages ITT: Insulin tolerance test; AGEs: Advanced glycation end products; VO2: oxygen consumption; VO2max: HOMA: Homeostatic Model Assessment; HOMA-IR: Homeostatic Model Assessment for Insulin Resistance.

TABLE 3 | Descriptive characteristics and assessment of medications.

Pharmacological intervention							
Author State Year	Participants	Sample size	Intervention implemented/control	Number of participants (basal, final)	Treatment duration	Aims/Outcomes	Significance difference between groups
Fanghänel (36) Mexico City 1996	Male and Female Intervention: 52.1 ± 8.8; Control: 51.2 ± 8.5 years old. BMI > 27 Kg/m ² NIDDM	60	Intervention: Metformin Control: Insulin	Intervention: 30, 28 Control: 30, 30	3 months	Primary: glucose and lipid metabolism Secondary: Glycosylated hemoglobin, BMI, blood pressure	Yes: Metformin had beneficial effects on insulin resistance, hypertension, overweight, and hyperlipidemia
Fanghänel (35) Mexico City 1998	Male and Female Intervention: 49.3 ± 9.6; Control: 47.1 ± 7.3 years old. BMI >27 T2DM	120	Intervention: Metformin, Insulin Control: Diet	Intervention: 60, 60 Control: 60, 60	3 months	Primary: levels fibrinogen.	Yes: The insulin group showed decrease on glucose, fibrinogen levels and BMI
Cuellar (31) Mexico City 2000	Male and female Intervention: 38.44 ± 10.09; Control: 38.62 ± 9.12 years old. BMI >30 Kg/m ²	69	Intervention: Sibutramine Control: Placebo	Intervention: 35, 22 Control: 34, 9	6 months	Primary: Safety and efficacy of sibutramine Secondary: waist circumference and waist/hip ratio. Appetite, satiety, and diet adherence were also evaluated	Yes: Sibutramine induces significant loss of body weight and waist circumference. No significant adverse events. NOTE: Sibutramine was withdrawn in 2010
Fanghänel (32) Mexico City 2000	Male and female Intervention: 38.09 ± 10.11; Control: 39.48 ± 10.26 years old. BMI >30 Kg/m ²	109	Intervention: Sibutramine Control: Placebo	Intervention: 55, 40 Control: 54, 44	6 months	Primary: Safety and efficacy of sibutramine 10 mg Secondary: Waist circumference and waist/hip ratio, blood pressure and heart rate and clinical laboratory	Yes: Sibutramine induces significant loss of BMI and waist, but does not significantly affect cardiovascular function. No significant adverse events. NOTE: Sibutramine was withdrawn in 2010
Fanghänel (33) Mexico City 2001	Male and female Intervention: 40.1 ± 10.51; Control: 39.0 ± 10.15 years old. BMI >30 Kg/m ²	82	Intervention: Sibutramine Control: Placebo	Intervention: 40, 40 Control: 44, 42	6 months	Primary: Endpoints for the trial were the body weight and BMI Secondary: Endpoints were the waist and waist/hip ratio, appetite, satiety and diet adherence and adverse events	Yes: Patients had weight gain, but they did not reach the baseline body weight. No significant adverse events. NOTE: Sibutramine was withdrawn in 2010
Zaragoza (30) Mexico City 2001	Male and Female Intervention 1: 36.84 ± 9.16; Intervention 2: 36.79 ± 10.61; Control: 36.77 ± 9.18 years old BMI > 30 Kg/m ²	210	Intervention 1: D-norpseudoephedrine 50 mg, triiodothyronine 75 ug, diazepam 5 mg, atropine 0.36 mg, aloin 16.2 mg Intervention 2: D-norpseudoephedrine 50 mg, atropine 0.36 mg, aloin 16.2 mg Control: Placebo	Intervention 1: 69, 59 Intervention 2: 70, 51 Control: 69, 26	6 months	Primary: Update data on the efficacy and safety of two formulations of d-norpseudoephedrine in prolonged-release capsules, which have been used successfully in the treatment of obesity since 1956 and 1995	Yes: The efficacy and safety of formulations 1 and 2 in the pharmacological treatment of obesity are confirmed, these d-norpseudoephedrine formulations maintain the weight reduction achieved for periods of at least 6 months, without causing addiction or inducing tolerance with loss of effectiveness after a shorter period. NOTE: Not approved by FDA

(Continued)

TABLE 3 | Continued

Pharmacological intervention

Author State Year	Participants	Sample size	Intervention implemented/control	Number of participants (basal, final)	Treatment duration	Aims/Outcomes	Significance difference between groups
Halpern (40) Multinational 2003	Male and Female Intervention: 50.88 ± 1.37 ; Control: 50.79 ± 1.48 years old. BMI > 27 Kg/m ² NIDDM	343	Intervention: Orlistat Control: Placebo	Intervention: 169, 139 Control: 174, 141	6 months	Primary: To determine if obese non-insulin-dependent diabetic patients lose more weight when treated for 24 weeks with orlistat, in conjunction with a hypocaloric diet plus behavioral counseling, than when treated by placebo plus similar instructions Secondary: To evaluate the effects on glucose profile and to determine the tolerability and safety of orlistat	Yes: Orlistat group lost greater body weight vs. in the placebo group, Orlistat treatment plus diet compared to placebo plus diet was associated with significant improvement in glycemic control, as reflected in decreases in HbA1c, fasting plasma glucose and postprandial glucose and greater improvements than placebo in lipid profile, with reductions in total cholesterol and LDL-c
Gonzalez-Ortiz (39) Jalisco 2004	Male and Female Intervention 1: 53 ± 8 ; Intervention 2: 53 ± 7 ; Intervention 3: 53 ± 7 years old. BMI >27 Kg/m ² T2DM with A1c > 8%	104	Intervention 1: Glimepiride Intervention 2: Metformin Intervention 3: Glimepiride + Metformin	Intervention 1: 37, 37 Intervention 2: 33, 33 Intervention 3: 34, 34	3 months	Primary: To evaluate the efficacy and safety of glimepiride plus metformin in a single presentation, as combined therapy, in patients with T2DM with secondary failure to glibenclamide	Yes: The percentage of patients that improved A1C levels to <7% were in glimepiride, metformin and their combination groups
Gómez-García (49) Jalisco 2006	Male Intervention: 21.8 ± 2.8 ; Control: 25.1 ± 4.5 years old. BMI ≥ 27 Kg/m ²	14	Intervention: Zinc sulfate Control: placebo	Intervention: 7, 7 Control: 7, 7	30 days	Primary: Insulin sensitivity, leptin and androgens Secondary: Glucose, total cholesterol, HDL-c, LDL-c, VLDL-c, triglycerides, creatinine, uric acid, TT, TL, SHBG	Yes: Zinc increased the leptin concentrations in obese No: No significant changes in insulin sensitivity and androgens after the intervention
Toplak (29) Multinational 2005	Male and female Intervention 1: 41.3 ± 11.0 ; Intervention 2: 41.1 ± 12.1 years old. BMI 30–43 Kg/m ²	430	Intervention 1: Orlistat + Diet –500 kcal Intervention 2: Orlistat + Diet –1000kcal	Intervention 1: 215, 141 Intervention 2: 215, 154	12 months	Primary: To determine the effect of two different levels of energy deficit on weight loss in obese patients treated with orlistat	No: Treatment with orlistat was associated with a clinically beneficial weight loss, irrespective of the prescribed dietary energy restriction
Gonzalez-Ortiz (28) Jalisco 2006	Male and Female Intervention: 37.3 ± 6.7 ; Control: 38.5 ± 5.8 years old. BMI: 25–35 Kg/m ² Dyslipidaemia	12	Intervention: Ezetimibe Control: Placebo	Intervention: 6, 6 Control: 6, 6	3 months	Primary: To evaluate the effect of ezetimibe on insulin sensitivity and lipid profile in obese and dyslipidemic patients	Yes: Ezetimibe administered for 90 days decreased total and low-density lipoprotein cholesterol concentrations No: Insulin sensitivity
Meaney (27) Mexico City 2008	Male and female Intervention: 49 ± 10 ; Control: 49 ± 8 years old. MetS	60	Intervention: Metformin Control: Diet	Intervention: 30, 22 Control: 28, 17	12 months	Primary: To evaluate the effect of metformin on metabolic syndrome in IGT patients	Yes: Metformin has effect on endothelial function and nitroxidation No: No-effect on BMI

(Continued)

TABLE 3 | Continued

Pharmacological intervention

Author State Year	Participants	Sample size	Intervention implemented/control	Number of participants (basal, final)	Treatment duration	Aims/Outcomes	Significance difference between groups
Hernandez-Gonzalez (47) Jalisco 2010	Male and Female Intervention: 41.6 ± 6.3; Control: 42.6 ± 5.6 years old. BMI: 30–40 Kg/m ² Without DM	12	Intervention: Chitosan Control: Placebo	Intervention: 6, 6 Control: 6, 6	3 months	Primary: Insulin sensitivity Secondary: Glucose, HDL-c, LDL-c and triglycerides	Yes: Increased insulin sensitivity and decrease weight, BMI, waist circumference and TG
Martinez-Abundis (26) Jalisco 2010	Male and female Intervention 1: 29.5 ± 6.3; Intervention 2: 26.1 ± 4.0; Intervention 3: 29.6 ± 5.5 years old. BMI 30–40 Kg/m ²	18	Intervention 1: Placebo and metformin Intervention 2: Sibutramine and placebo Intervention 3: Sibutramine and metformin	Intervention 1: 9, 9 Intervention 2: 9, 9 Intervention 3: 9, 9	3 months	Primary: To compare the effect of metformin and sibutramine as monotherapy or as combined therapy on insulin sensitivity and adiposity in obese patients Secondary: To evaluated Blood pressure, ITT, glucose, total cholesterol, LDL-c, HDL-c, triglycerides	Yes: The three pharmacological interventions reduced BMI at different magnitudes. Metformin improved insulin sensitivity. Sibutramine decreased adiposity. Metformin as monotherapy or combined with sibutramine had a beneficial effect on lipid profile
Ramos-Zavala (34) Jalisco 2011	Male and female Intervention: 47.5 ± 5.3; Control: 47.7 ± 5.2 years old. BMI > 25 T2DM with <6 months since diagnosis	40	Intervention: Diacerein Control: Placebo	Intervention: 20, 20 Control: 20, 20	2 months	Primary: Insulin secretion and metabolic control (included interleukin IL-1β, TNF-α, IL-6)	Yes: Significant increases in first, late and total insulin, fasting glucose and A1C levels, TNF-α, IL-6 No: Without significant differences in total cholesterol, HDL-c, LDL-c, triglycerides, VLDL-c and metabolized glucose
González-Acevedo (25) San Luis Potosi 2013	Women Intervention 1: 31.65 ± 7.41; Intervention 2: 28.45 ± 8.15; Control: 30.70 ± 6.87 years old BMI > 30 Kg/m ²	60	Intervention 1: 1 g of Omega-3 Intervention 2: 2 g of Omega-3 Control: Placebo+ Vitamin E (200 IU)	Intervention 1: 20, 20 Intervention 2: 20, 20 Control: 20, 20	3 months	Primary: To assess the effect of omega-3 supplementation on BMI, WHI and body composition of obese women using bioelectrical impedance	Yes: Supplementation significantly reduced weight, BMI, and total fat mass, compared to the control group, a dose-response effect, but these effects depended on the time and amount of Omega 3 supplemented, when the degree of compliance of exercise, adherence to the diet and age were controlled
Sánchez-Muñoz (24) Mexico City 2013	Women 25–60 years old BMI >24,9 Kg/m ²	19	Intervention: Metformin Control: Exercise	Intervention: 9, 8 Control: 10, 8	3 months	Primary: To establish the effectiveness of aerobic exercise and its influence in reducing cardiovascular risk in overweight or obese women with NAFLD.	Yes: It was significative changes in Arterial tension, HOMA-IR and insulin No: Was not significative differences in fatty liver

(Continued)

TABLE 3 | Continued

Pharmacological intervention							
Author State Year	Participants	Sample size	Intervention implemented/control	Number of participants (basal, final)	Treatment duration	Aims/Outcomes	Significance difference between groups
Hernandez-Corona (43) Jalisco 2014	Male and female Intervention: 45.4 ± 7.3; Control: 42.4 ± 3.7 years old. BMI: 25–34.9 Kg/m ²	25	Intervention: F Fucoidan Control: Placebo	Intervention: 13, 11 Control: 12, 8	3 months	Primary: Evaluate changes in insulin secretion and insulin resistance. Secondary: Weight, blood pressure, glucose, total cholesterol, HDL-c, TG and IR.	Yes: Significant decrease in DBP and LDL-c, Increase in insulin levels, HOMA B-cells and HOMA IR No: BMI
Hernandez-Bastida (38) Mexico City 2015	Male and female 18–65 years old BMI 25–40 Kg/m ² T2DM	120	Intervention: Topiramate + Phentarmine Control: Placebo + Phentarmine	Intervention: 60, 54 Control: 60, 53	3 months	Primary: Efficacy and safety of the combination of phentermine plus topiramate Secondary: To evaluate the impact of the combination over risk and safety factors	Yes: The combination showed reduction in weight, BMI, waist, circumference, lipids and glucose. The most frequent adverse events were paresthesia and dry mouth, these effects decreased in frequency and intensity during the study
O'Neil (22) Multinational 2016	Male and female Hispanic Age: Intervention: 41.4 ± 11.4; Control: 41.0 ± 11.7 years old BMI ≥27 Kg/m ² with at least 1 comorbid condition or BMI ≥30 Kg/m ²	5,131 Hispanic: 534	Intervention: Liraglutide Control: Placebo	Intervention: 3,289, 3,289 Control: 1,842, 1,842 Hispanic participants: Intervention: 341, 341 Control: 193, 193 (their data were combined with other ethnic groups)	3 studies of 56 weeks 1 study of 32 weeks	Primary: Efficacy and safety of liraglutide Secondary: Weight and risk factors	Yes: Efficacy and safety were largely similar between Hispanic and non-Hispanic
Sánchez-Rodríguez (23) Mexico City 2016	Healthy postmenopausal women or with MetS. Healthy women: Intervention: 52 ± 0.6; Control: 53 ± 0.7 years old. MetS women: Intervention: 52 ± 0.7; Control: 53 ± 0.9 years old.	100	Intervention: Hormone therapy Control: Placebo	Intervention: 50, 46 Control: 50, 45	6 months	Primary: Oxidative stress	Yes: After 6 months, MetS decreased in the hormone treated group (48%), triglycerides and HDL-c; the controls did not show differences. SS in MSW-HT decreased (3.8 ± 0.3 to 1.7 ± 0.3, <i>p</i> < 0.05) and Oxidative stress was also reduced (44%), this effect was evident since 3 mo. HW-HT with high OS also decreased (40%) In placebo groups there was no change

(Continued)

TABLE 3 | Continued

Pharmacological intervention

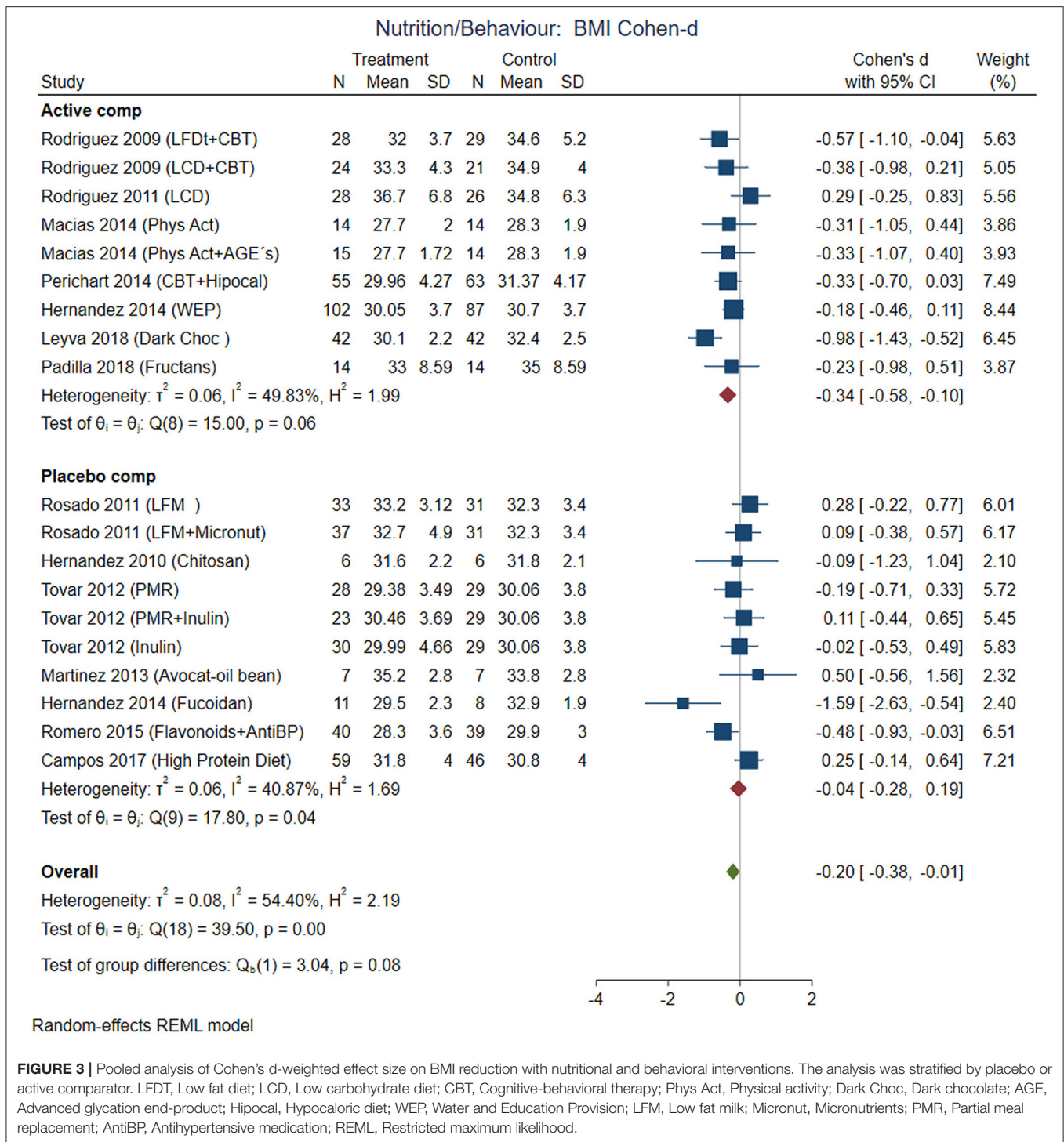
Author State Year	Participants	Sample size	Intervention implemented/control	Number of participants (basal, final)	Treatment duration	Aims/Outcomes	Significance difference between groups
Mendez-del Villar (37) Jalisco 2017	Male and Female Intervention: 41.3 ± 9.7; Control: 54 ± 3.5 years old. BMI: 25-34.9 Kg/m ² T2DM and inadequate glycemic control	12	Intervention: Metformin + Diacerein Control: Metformin	Intervention: 6, 6 Control: 6, 6	3 months	Primary: Glycemic control	Yes: Significant decrease in fasting glucose, postprandial glucose and A1C
Gonzalez-Heredia (19) Jalisco 2017	Male and female Intervention: 49.3 ± 5.7; Control: 51.9 ± 6.4 years old. BMI 25–34.9 Kg/m ² Impaired Glucose Tolerance	16	Intervention: Linagliptin Control: Metformin	Intervention: 8, 8 Control: 8, 8	3 months	Primary: To assess the effect of linagliptin vs. metformin on glycemic variability in patients with IGT	Yes: Group with linagliptin had decrease in glucose levels at 120 min of OGTT No: No significant differences in the AUC, MAGE, SD of glucose, CV of glucose, and MBG between groups
Gonzalez-Ortiz (20) Jalisco 2017	Male Intervention: 40.2 ± 7.9; Control: 38.4 ± 6.4 years old. BMI 30–39.9 Kg/m ²	18	Intervention: Tadalafil Control: Placebo	Intervention: 9, 9 Control: 9, 9	28 days	Primary: Blood pressure, cholesterol, triglycerides, HDL-c, LDL-c, glucose	No: After the administration of tadalafil there were no significant differences in total insulin secretion first phase of insulin secretion and insulin sensitivity. No significant differences were shown in other measurements
Le Roux (21) Multinational 2017	Male and female Intervention: 47.5 ± 11.7; Control: 47.3 ± 11.8 years old. BMI ≥27 Kg/m ² Dyslipidemia, or hypertension, or both	2,254 Hispanic: 213	Intervention: Liraglutide Control: Placebo	Intervention: 1,505, 783 Control: 749, 327 Hispanic participants Intervention: 143 Control: 70 (their data were gathered with other individuals)	40 months (3.3 years)	Primary: Evaluate the proportion of individuals with prediabetes who were diagnosed with type 2 diabetes Secondary: GLP-1 receptor agonist, waist circumference (cm), glycated hemoglobin (%), 2-h plasma glucose during OGTT (mmol/L), Free fatty acids (mmol/L), Blood pressure (mm Hg)	Yes: Time to onset of diabetes over the 40 months among all randomized individuals was 2-7 times longer with liraglutide than with placebo Greater weight loss than placebo at month 40: BMI, waist circumference, glycated hemoglobin, fasting glucose, fasting insulin, fasting C-peptide, glucose levels in OGTT, systolic and diastolic blood pressure, and heart rate

NIDDM, Non-insulin dependent diabetes mellitus; BMI, Body mass index; T2DM, Type 2 diabetes mellitus; FDA, Food and Drug Administration; A1c, Glycated hemoglobin; HDL, High density lipoprotein; LDL, Low density lipoproteins; VLDL, Very low density lipoprotein; TT, Total testosterone, TL, Free testosterone, SHBG, Sex Hormone Binding Globulin; MetS, Metabolic syndrome; IGT, Impaired glucose tolerance; TG, Triglycerides; ITT, Insulin tolerance test; IL-1β, Interleukin 1 beta; IL-6, Interleukin-6; TNF-α, Tumor Necrosis Factor alpha; WHI, Waist Hip Index; NAFLD, Non-alcoholic fatty liver disease; IR, Insulin resistance; HOMA-IR, Homeostasis model assessment of IR; HOMA B-cells, Homeostatic Model Assessment-beta-cell function; SS, Stress score; MSW-HT, MetS women were assigned to HT (hormone therapy); HW-HT, Healthy-hormone therapy; OS, Oxidative stress; OGTT, Oral glucose tolerance test; AUC, Area under the curve; MAGE, Mean amplitude of glycemic excursion, SD, Standard deviation; CV, Coefficient of variation; MBG, Mean blood glucose; GLP-1, Glucagon-like peptide-1.

TABLE 4 | Descriptive characteristics and assessment of medications.

Surgical and alternative intervention							
Author State Year	Participants	Sample size	Intervention implemented/Control	Number of participants (basal, final)	Treatment duration	Aims/Outcomes	Significance difference between groups
Robles-Cervantes (62) Jalisco 2007	Female Intervention: 34.0 ± 3.7; Control: 34.6 ± 3.6 years old. BMI: 30–33 Kg/m ²	12	Intervention: Liposuction and diet Control: Diet	Intervention: 6, 6 Control: 6, 6	6 months	Primary: Visceral fat, Insulin sensitivity, leptin and tumor necrosis factor alfa Secondary: Glucose, Creatinine, Uric acid, Total cholesterol, HDL cholesterol, Triglycerides	Yes: Leptin correlated with the subcutaneous fat No: no significant difference in insulin sensitivity and did not correlate with subcutaneous fat, leptin, or TNF-alpha
Arceo-Olaiz (61) Mexico City 2008	Male and Female Intervention: 36.5 ± 9.7; Control: 37.8 ± 9.6 years old. BMI: 40–55 kg/m ²	60	Intervention: Laparoscopic roux- en - y gastric bypass (LRYGB) Control: banded LRYGB (BLRYGB)	Intervention: 30, 30 Control: 30, 30	24 months	Primary: Weight loss	No: The studied groups did not have significant differences in weight loss at 6, 12, and 24 months. The frequency of complications was similar in both groups
García-Vivas (58) Durango 2014	Women 18–45 years old BMI ≥25 Kg/m ² Without known MetS	138	Intervention: Acupuncture Control: Sham Acupuncture	138, 99	2 months	Primary: anthropometric and biochemical	Yes: Acupoint catgut embedding therapy + moxibustion produced significant reduction in body weight insulin and HOMA-IR
Alvarado-Reynoso (60) Mexico City 2019	Male and Female Intervention: 42.1 ± 3.2; Control: 37.8 ± 3.3 years old. BMI ≥ 25 Kg/m ²	45	Intervention: repetitive transcranial magnetic stimulation) rTMS Control: sham rTMS	Intervention: 22, 18 Control: 23, 19	2 weeks	Primary: body weight, food craving, auto perception, general health, depression and anxiety	Yes: In the rTMS-treated group reduced body weight, anxiety, and food craving. General health survey domain improved on physical functioning, emotional role, and vitality. The body shape questionnaire improved
Hernandez-Lepe (59) Chihuahua 2019	Male 25 ± 5 years old BMI >25 Kg/m ² Sedentary	52	Intervention: spirulina maxima Control: placebo	Intervention: 26, 26 Control: 26, 26	3 months	Primary: plasma lipid profile and antioxidant capacity	Yes: BMI, total cholesterol, triglycerides and LDL-C decreased. HDL-C increased in all treatment groups. Participants with known dyslipidemia had higher response

HDL-c: High density lipoprotein cholesterol; LDL-c: Low density lipoproteins cholesterol; TG: Triglycerides; TNF-a: Tumor Necrosis Factor alpha; LRYGB: Laparoscopic roux- in - y gastric bypass; BLRYGB: banded LRYGB; HOMA-IR: Homeostatic Model Assessment for Insulin Resistance; rTMS: Repetitive transcranial magnetic stimulation; BMI: Body mass index.

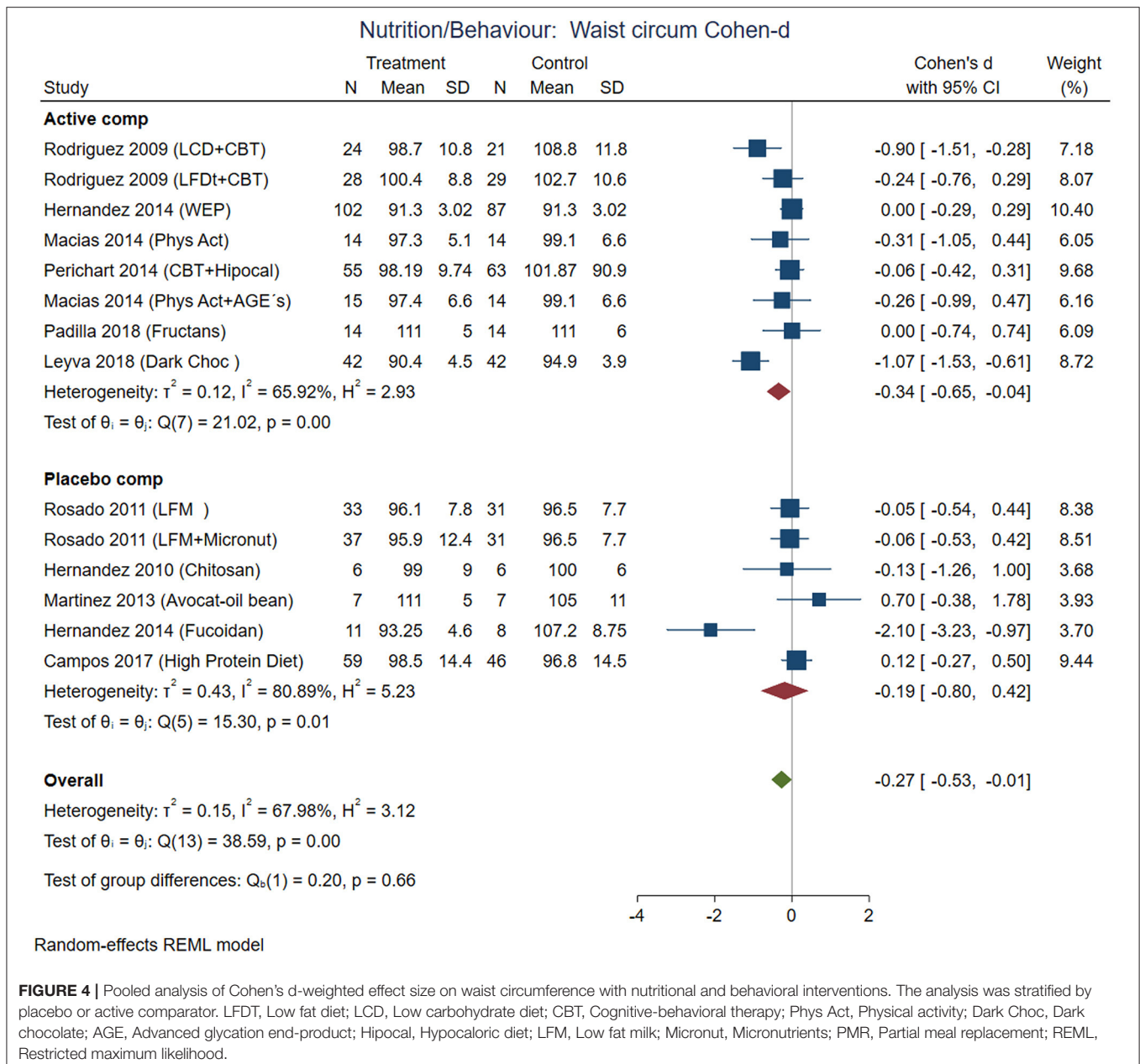


27 with nutrition and exercise, and 3 with surgical treatment (Table 1).

Data Extraction Process

The data extraction from the studies was done, by a team of 13 researchers, with a modified Cochrane tool for data collection form to obtain detailed information: type of

intervention (nutritional programs, behavioral treatments, use of drugs, surgical interventions or alternative medicine), age of intervention (childhood, adult), duration of treatments, year of the study development, sample size, groups of intervention and control, blindness of the treatment and the size of effects obtained in each study (Cohen's d). Data extraction was performed in duplicate, and cases of discrepancy were re-analyzed in groups of



4 investigators. When necessary, the authors were contacted to collect additional information. The main outcome was related to the reduction of BMI, waist circumference or percentage of body fat and biochemical parameters associated with metabolism such as glucose, total cholesterol, triglycerides, HDL-c, blood pressure, HOMA-IR and Matsuda. We used meta-regression to analyze the source of heterogeneity with mean age, mean BMI, location of the study (represented as latitude of the city of recruitment), sex distribution, and duration of the study. Adverse effects were also analyzed.

The quality assessment of the studies was done using the Jadad scale (64) and the risk of bias was assessed with GRADE checklist (17) with the following assessment guidelines:

Low risk studies were treated with unpredictable allocation: A central office for allocation by phone, web, and pharmacy. Use of sequentially numbered, sealed, opaque envelopes. The drug containers are sequentially numbered and identical. Meanwhile high risk is predictable allocation, like staff know the random sequence in advance. Another high risk of bias was the use of envelopes or packaging without safeguards

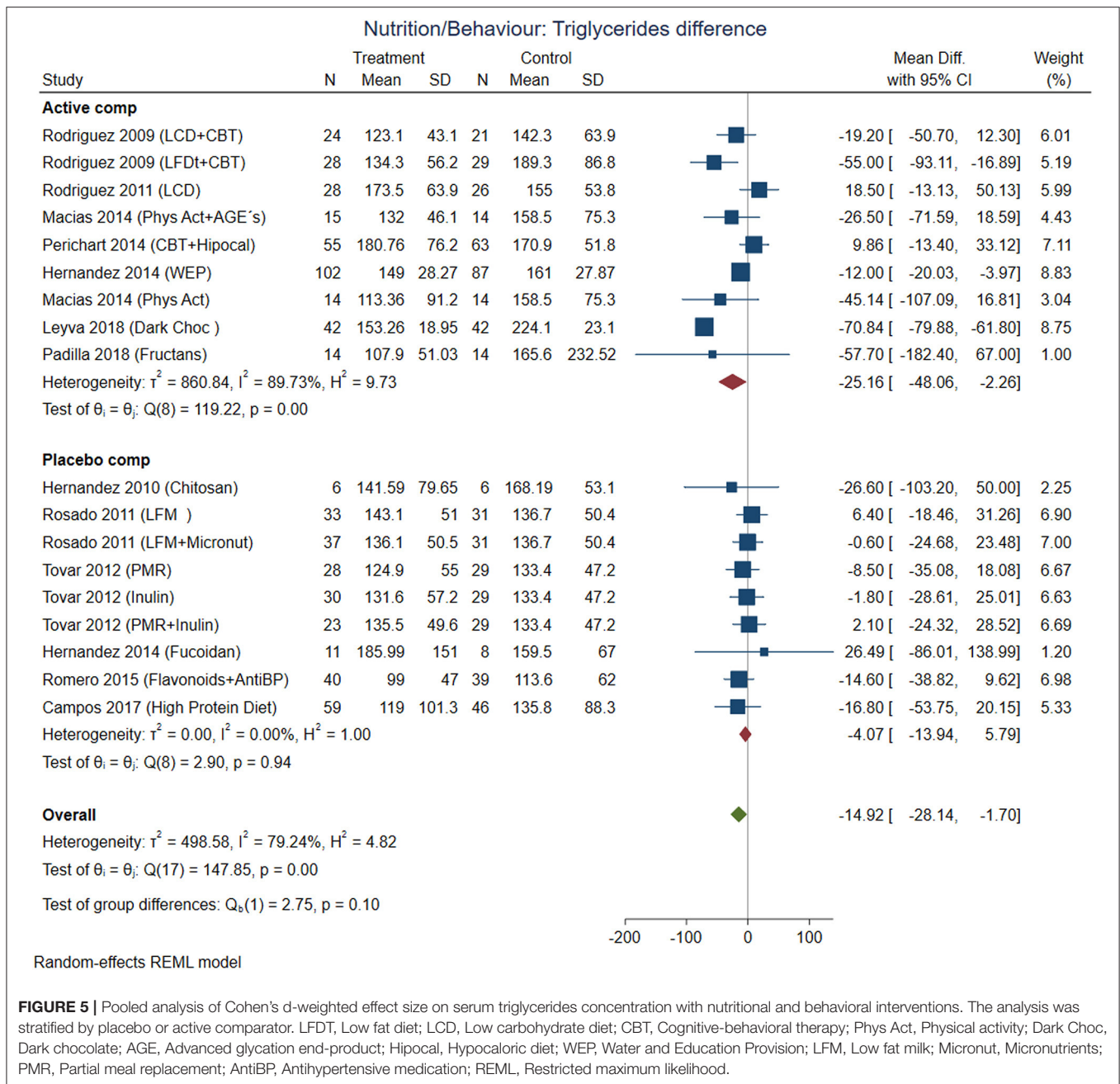


FIGURE 5 | Pooled analysis of Cohen's d-weighted effect size on serum triglycerides concentration with nutritional and behavioral interventions. The analysis was stratified by placebo or active comparator. LFDt, Low fat diet; LCD, Low carbohydrate diet; CBT, Cognitive-behavioral therapy; Phys Act, Physical activity; Dark Choc, Dark chocolate; AGE, Advanced glycation end-product; Hipocal, Hypocaloric diet; WEP, Water and Education Provision; LFM, Low fat milk; Micronut, Micronutrients; PMR, Partial meal replacement; AntiBP, Antihypertensive medication; REML, Restricted maximum likelihood.

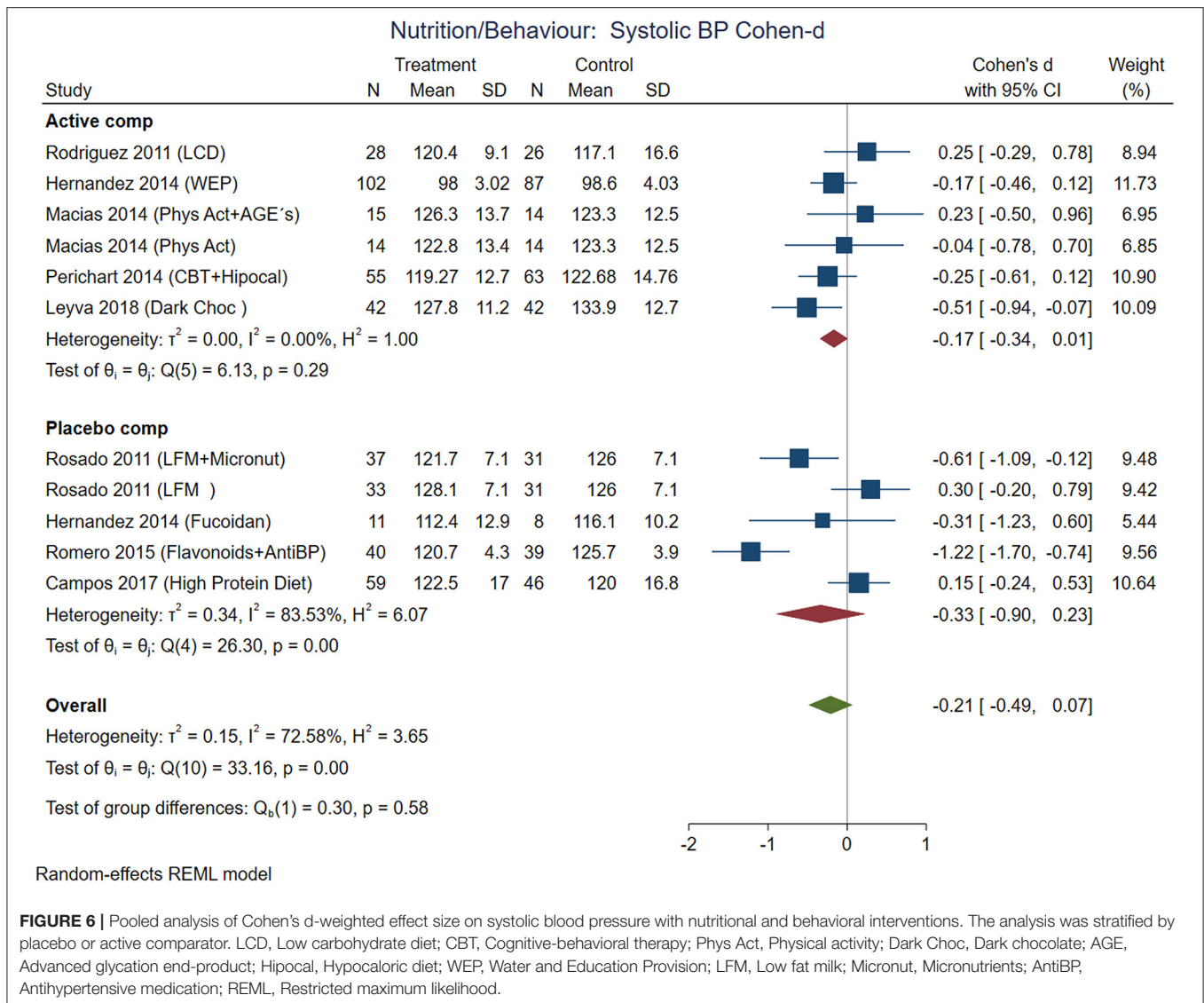
or non-random, predictable sequence. The attrition bias can be considered if there was a poor description on how much data was missing from each group, or the lack of reasons for missing data and how they were considered in the analysis. We were also interested in whether researchers used intention to treat analysis, imputation of missing values, or just per protocol analysis.

Both the scanning and selection of the studies, as well as the data extraction with the Cochrane tool and the quality assessment using the Jadad scale were procedures performed in a paired manner by the investigators to avoid bias, and each step was

discussed prior to the next using an online Delphi method due to COVID-19 confinement.

Statistical Analysis

Sample size, means, and standard deviation were retrieved from the data of the included studies. The summary of contrasts between treatments was computed with Cohen's-d differences. All models were analyzed with Restricted maximum likelihood (REML) random effects models, and the pooled effects were described with 95% confidence intervals (95% CI). Heterogeneity was assessed with I^2 statistics, and we use meta-regression to



analyze the heterogeneity. The Egger test was performed on the slopes in the weighted regression of the effect size. These statistical analyses were conducted with Stata 16.0 (StataCorp, College Station TX).

The network meta-analysis was computed for studies with medication only, because the designs of nutrition/behavior studies did not allow us to construct networks. This analysis was performed with Stata 16.0 and CINeMA to define the network geometry, and effects comparisons. We did not have enough samples of studies to perform a rankogram.

RESULTS

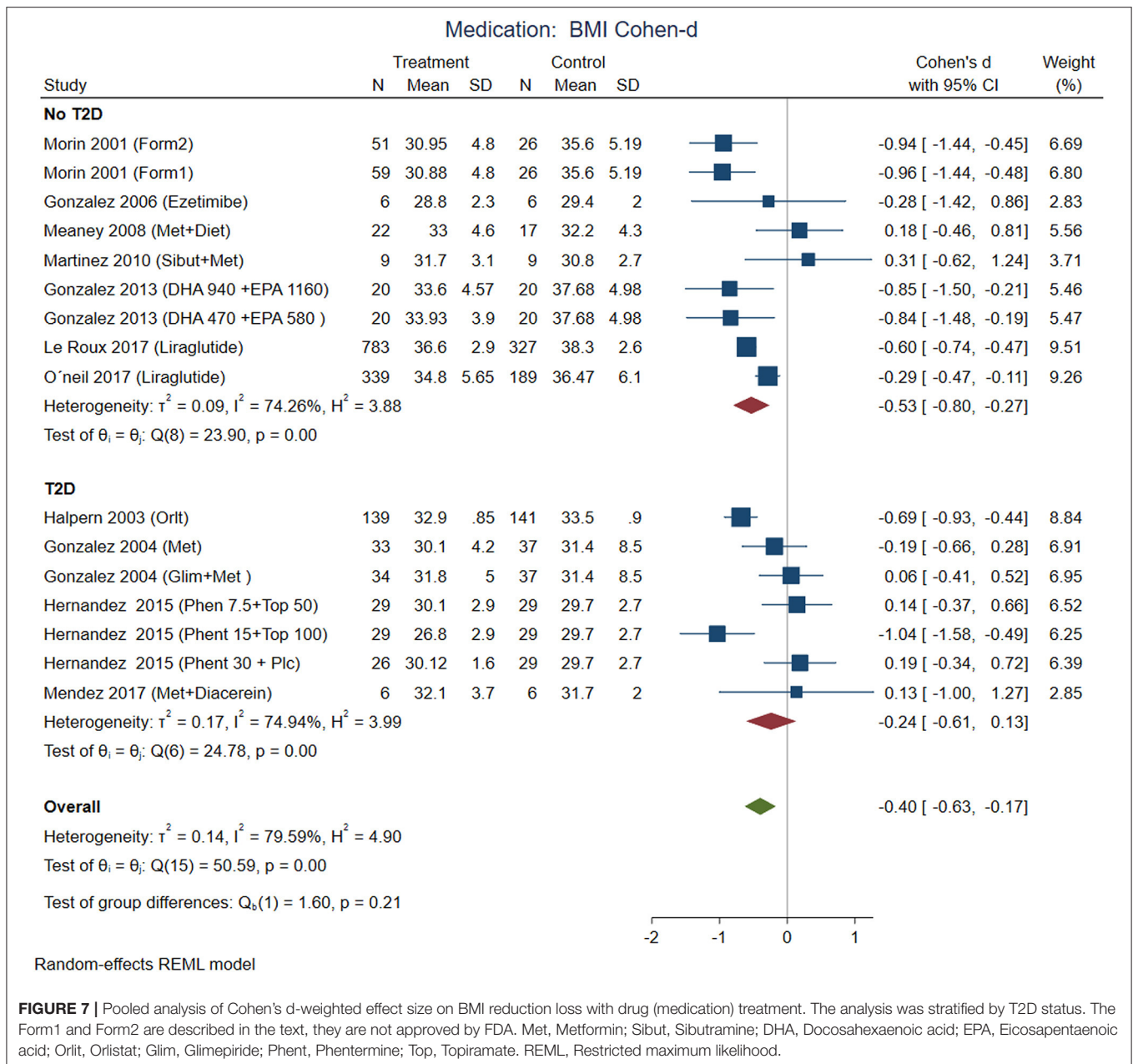
We collected 634 studies from databases and after duplicate removal identified 64 controlled clinical trials conducted in Mexico from PubMed, 27 from Scopus, and 15 from Web of Science.

Studies Characteristics

For the systematic review, we included 45 anti-obesity national and multinational collaborative controlled clinical trials involving overweight and obese Mexican adults (>18 years) subjected to distinct weight-loss interventions: pharmaceutical (25 studies), nutrition and behavioral (15 studies), surgical (2 studies), and alternative (3 studies) interventions (Table 1). A total of 15 interventions were composed exclusively by women, 5 by men, and 35 by both sexes.

Participant Cities and States

With regard to participant cities, Mexico City had the highest frequency of studies (38%, $n = 17$), followed by Guadalajara (29%, $n = 13$). There were 11 out of 32 states in the included studies, three of which are on the Mexico-U.S. border: Nuevo Leon, Tamaulipas,



and Baja California. The details are described in **Table 1**.

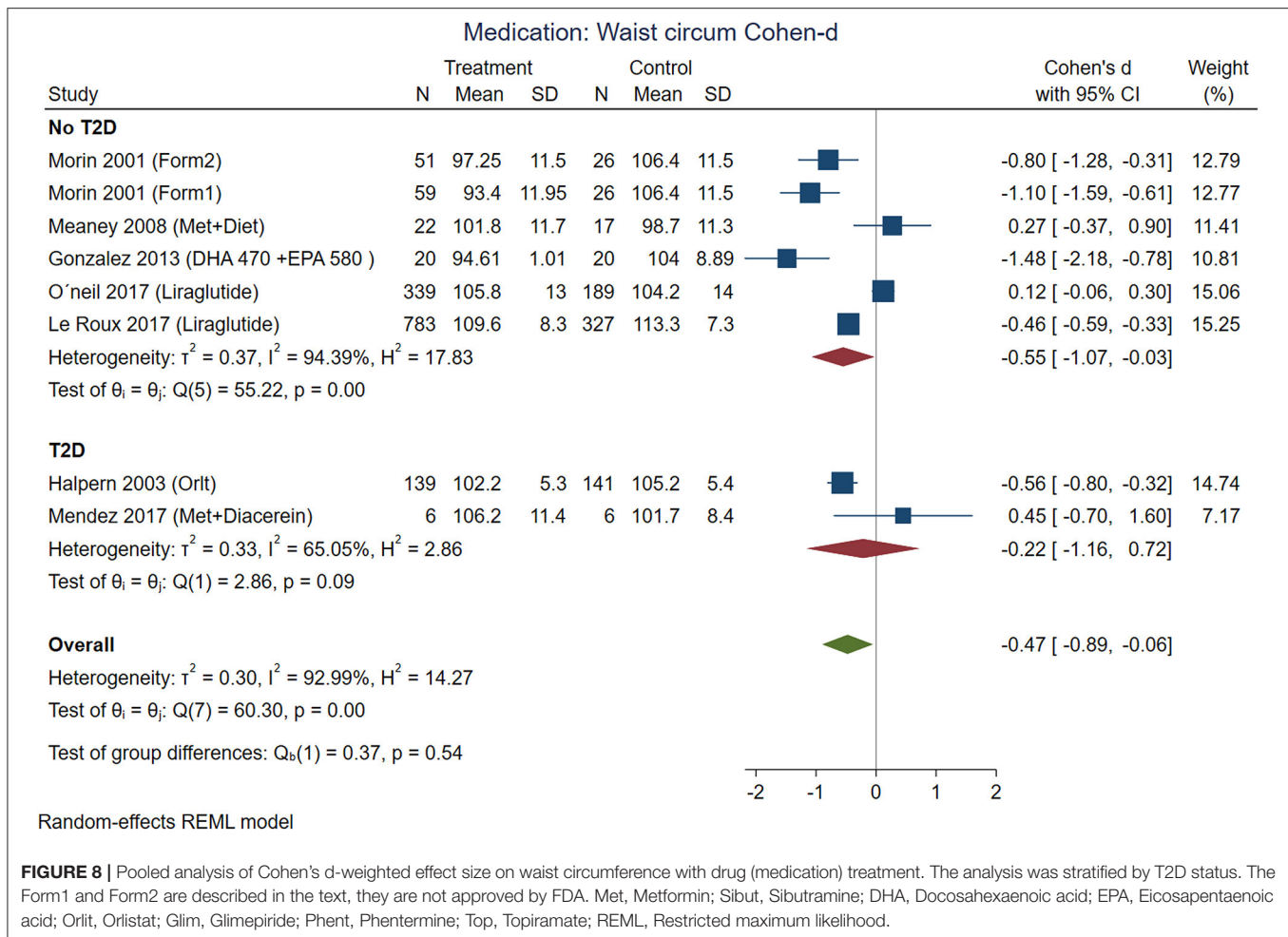
Risk of Bias and Quality

We performed a quality assessment at the intervention level. The Jadad mean value for nutritional/behavioral interventions was 3.6 (min 3, max 5), and for drug treatments was 3.7 (min 2, max 5). The nutrition/behavioral interventions had medium risk of bias (by GRADE) in 95% ($n = 18/19$) and high risk of bias in 5% ($n = 1/19$). Physical activity was difficult to blind. The use of medication as intervention had very low risk of bias in 32% ($n = 7/22$), medium 55% ($n = 12/22$) and high risk in 14% ($n = 3/22$). No differences in bias were found

for interventions that included participants with T2D (Fisher's exact test = 0.286).

Synthesis of Results

This systematic review and meta-analysis included data from 2,074 participants in nutrition/behavioral interventions and 5,086 participants with medication. Excluding multicentric international studies, there were 1,525 participants from studies conducted exclusively in Mexico. The main outcomes from individual studies are described in **Tables 2–4**. Forest plots with the pooled analysis are in **Figures 3–10**.



Nutritional/Behavioral Interventions

The comparisons between active nutrition/behavioral interventions with placebo showed improvement for BMI (Cohen-d, 95% CI, **Figure 3**) 0.2 (0.01, 0.38), waist circumference 0.27 (0.01, 0.53, **Figure 4**), triglycerides 0.34 (-0.02, 0.71; **Figure 5**), and systolic blood pressure 0.21 (-0.07, 0.49, **Figure 6**). The lowest heterogeneity was for BMI ($I^2 = 41\%$) and the highest for triglycerides ($I^2 = 88\%$). Only one intervention with physical activity showed an effect on BMI (Cohen-d of 0.3), increase on HDL-c (Cohen-d 0.16), but with wide confidence intervals. Most of these studies excluded T2D individuals, therefore the glucose levels did not show difference between compared groups.

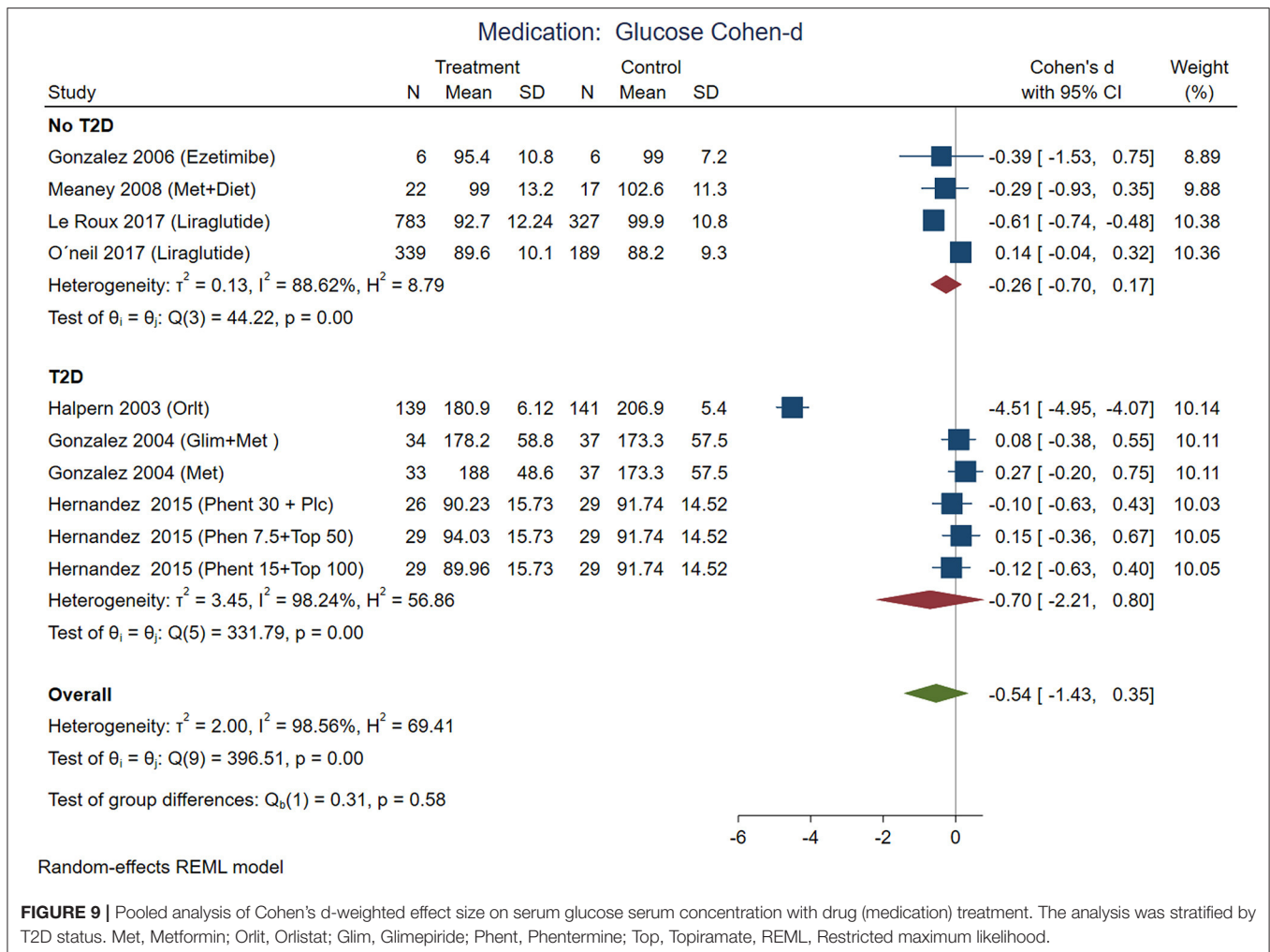
Combining cognitive-behavioral therapy (CBT; goal setting, problem-solving, and stimulus control) to either a low-fat diet (21% fat, $\leq 10\%$ saturated fat, 25% protein, 54% carbohydrates), or a low-carbohydrate diet (27% protein, 28% fat, 45% carbohydrate) produced significantly greater short-term weight loss compared to diet alone. The use of antioxidants with flavonoids contained in dark chocolate showed favorable changes in biochemical parameters (total cholesterol, triglycerides, and LDL-cholesterol level in blood)

and anthropometrical parameters (waist circumference) the pooled analysis with Cohen-d supported additionally loss of BMI and decrease in systolic blood pressure (**Figure 6**).

Finally, the avoid of sugar-sweetened beverages (SSB) by water substitution showed positive effect on plasma triglycerides, and systolic blood pressure.

Drug Treatments and T2D Status

According to effect size, pharmacological treatments from studies that included participants with T2D showed improvements in BMI (**Figure 7**), waist circumference (**Figure 8**), and glucose (**Figure 9**) in non-T2D individuals compared with patients with T2D. BMI reduction in the T2D group had a Cohen-d of 0.24 (0.13, 0.66) compared with non-T2D reduction of 0.53 (0.27, 0.80); the waist circumference had a Cohen-d of 0.22 (0.72, 1.16) compared with non-T2D 0.55 (0.03, 1.07); diastolic blood pressure 0.18 (0.3, 1.42) vs. 0.87 (0.33, 2.06), respectively. As expected, the treatment had a large effect on glucose lowering in individuals with T2D compared to non-T2D participants (Cohen-d 0.7 vs. 0.26, respectively).

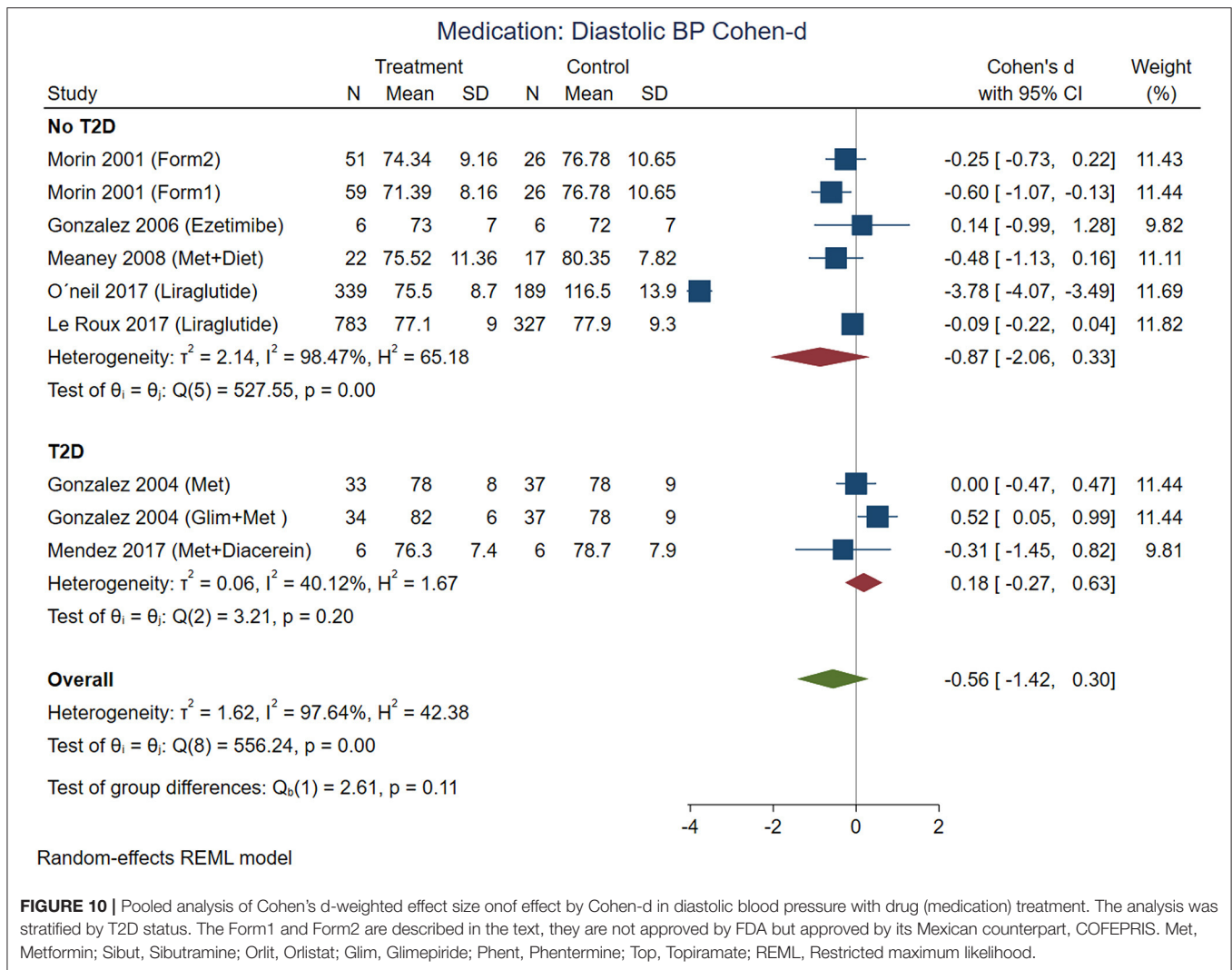


Some medications used in Mexico had a large effect on weight reduction (Figures 7, 8) in participants without T2D (Cohen-d about 0.9). For instance, the use of DHA (docosahexanoic acid) 470 or 940 mg combined with EPA (eicosapentanoic acid) 580 or 1,160 mg, compared with placebo, and the use of two different formulations (Formula 1: d-norpseudoephedrine 50 mg, triiodothyronine 75 ug, diazepam 5 mg, atropine 0.36 mg, aloin 16.2 mg; and formula 2: d-norpseudoephedrine 50 mg, atropine 0.36 mg, aloin 16.2 mg.) for 6 months compared with placebo. These medications are not approved for treatment of obesity by FDA, and the formulations are not legally available for purchase in the US, however, reports in US found thyroid intoxication (65). The effect of liraglutide was between 0.3 and 0.6 including participants from international samples. Participants with T2D showed the use of phentermine 15 mg and topiramate 100 mg had higher effect compared with phentermine 7.5 mg and placebo. There was no replication for any of these studies, the Egger test on a random model showed no small study effects on BMI for 18 interventions on nutrition/behavioral ($p = 0.43$), nor for 19 interventions on medication ($p = 0.22$).

It is interesting that systolic blood pressure was modified by non-pharmacological treatments, meanwhile, diastolic blood pressure was modified in non-T2D participants treated with medications (Figure 10). From the five analyzed studies with medications, three of them included patients with hypertension (prevalence of hypertension between 24 and 42%). The blood pressure decreases with weight loss, the Trial of Hypertension Prevention had a weight loss intervention arm, resulting in reduction of both, systolic and diastolic, measurements (66).

Source of the Studies Heterogeneity

We made multiple Meta-Analyses clustering the studies into stratum by type of intervention, T2D status, and group of comparison. Additionally, we did meta regression analyzing the mean age, BMI, months of treatment, comparison with placebo and geographical location measured by latitude. Those confounders that reached statistical significance for HDL-c serum levels were the duration of the intervention [$b = 1.07$ (se 0.49) $p = 0.03$, b: beta value, se: standard error] and the comparison vs. placebo [$b = 4.4$ (se 2.1) $p = 0.04$]. The



triglyceride serum levels showed effects from the mean age of the study [$b = 1.3$ (se 0.59) $p = 0.03$] and the geographic location [$b = -2.7$ (se 1.3) $p = 0.04$]. However, the geographic location was closely related with the type of intervention, for example, studies located close to the Mexico-U.S. border used physical activity interventions; meanwhile the South regions used nutritional supplements. The diastolic blood pressure was modified by the BMI [$b = -0.49$ (se 0.27) $p = 0.067$] and geographical location [$b = -0.9$ (se 0.44) $p = 0.04$], however these variables were influenced by the treatment with liraglutide (Supplementary Figures 1, 2).

Network Meta-Analysis

A network meta-analysis of drug treatments and T2D status was performed for BMI, diastolic blood pressure (DBP), and glucose. The network meta-analysis included direct comparisons constructed with connections between treatments, and indirect comparisons using all possible connections between treatments. All networks had the principles of coherence, transitivity, and consistency. This analysis was not feasible for

nutritional/behavioral interventions due to the design and the small number of studies. **Supplementary Figure 3** illustrates two networks for studies with T2D patients, examining the efficacy of pharmacological interventions on the studied variables, one network for each comparison between treatments and placebo (Supplementary Figure 3A) and with metformin (Supplementary Figure 3B). These network diagrams provide a graphical representation of how each intervention connects to any other direct comparisons. **Table 5** (matrix A and B) and **Supplementary Tables 1, 2** detail the complete matrix of results, in which the comparative effects between drugs are shown in terms of differences in standardized means.

The contrast matrix between pharmacological treatments with placebo showed a decrease on BMI in every pharmacological intervention, for instance, DHA 470 + EPA 580 mg was 0.816 (CI: 0.049, 1.582); DHA 940 + EPA 1,160 mg: 0.888 (CI: 0.117, 1.658); Formulation 1: 0.959 (CI: 0.324, 1.593); Formulation 2: 0.944 (CI: 0.301, 1.588); Liraglutide: 0.451 (CI: 0.141, 0.761). On the other hand, the status of T2D consistently supported metformin alone or in combinations was the most effective

TABLE 5 | Network meta-analysis results matrix.

Matrix A: drugs (non-diabetic participants)	
BMI (Reference: placebo)	
DHA 470 + EPA 580	0.072 (−0.672, 0.815)
−0.072 (−0.815, 0.672)	DHA 940 + EPA 1160
−0.143 (−1.138, 0.852)	−0.071 (−1.070, 0.927)
−0.129 (−1.130, 0.872)	−0.057 (−1.061, 0.947)
0.365 (−0.462, 1.192)	0.436 (−0.394, 1.267)
0.816 (0.049, 1.582)	0.888 (0.117, 1.658)
	0.143 (−0.852, 1.138)
	0.071 (−0.927, 1.070)
	Form1
	0.014 (−0.541, 0.570)
	0.508 (−0.198, 1.214)
	0.959 (0.324, 1.593)
	0.129 (−0.872, 1.130)
	0.057 (−0.947, 1.061)
	−0.014 (−0.570, 0.541)
	Form2
	0.493 (−0.221, 1.208)
	0.944 (0.301, 1.588)
	−0.365 (−1.192, 0.462)
	−0.436 (−1.267, 0.394)
	−0.508 (−1.214, 0.198)
	−0.493 (−1.208, 0.221)
	Liraglutide
	0.451 (0.141, 0.761)
	−0.816 (−1.582, −0.049)
	−0.888 (−1.658, −0.117)
	−0.959 (−1.593, −0.324)
	−0.944 (−1.588, −0.301)
	−0.451 (−0.761, −0.141)
	Pic
	0.451 (0.141, 0.761)
Matrix B: drugs (diabetic participants)	
BMI (Reference: metformin)	
Diac+Met	
0.080 (−1.147, 1.307)	−0.143 (−1.374, 1.088)
0.143 (−1.088, 1.374)	−0.063 (−0.529, 0.403)
0.774 (−0.478, 2.026)	Glim+Met
−0.124 (−1.257, 1.009)	0.631 (−0.087, 1.349)
	−0.267 (−0.749, 0.214)
	Insulin
	−0.898 (−1.431, −0.366)
	0.124 (−1.009, 1.257)
	0.204 (−0.266, 0.675)
	0.267 (−0.214, 0.749)
	0.898 (0.366, 1.431)
	Met

Matrix A represent the estimates of the effect of treatments (standardized mean differences and 95%CI) relative to placebo. The dosage of DHA and EPA are in mg per day. Form1. D-norpseudoephedrine 50 mg, triiodothyronine 75 ug, diazepam 5 mg, atropine 0.36mg, albin 16.2mg. Form2. D-norpseudoephedrine 50mg, atropine 0.36mg, albin 16.2mg. These two formulations are not approved by FDA. Placebo. Matrix B shows estimates of the effect of treatments (standardized mean differences) relative to metformin in patients with diabetes. Diac, Diacem; Glim, Glimpiride; Met, Metformin.

intervention for reducing BMI compared to insulin: −0.898 (CI: −1.431, −0.366). Regarding glucose, the intervention with insulin was more effective in reducing serum glucose levels compared to metformin: −1.506 (CI: −2.084, −0.928); Glimpiride + metformin: −1.332 (CI: −2.083, −0.581) and Glimpiride: −1.332 (CI: −2.077, −0.587). In summary, the interventions with the greatest contribution to the reduction of DBP were metformin: −0.507 (CI: −0.994, −0.020) compared to Glimpiride + metformin, and Glimpiride: −0.507 (−0.980, −0.033) compared to Glimpiride + metformin. Monotherapy interventions had greater efficacy on DBP compared to dual therapies.

DISCUSSION

This systematic review and multiple meta-analyses by strata summarize the existing evidence of weight loss as primary or secondary aims in the adult population. Besides, we analyzed the cardiometabolic risk traits affected by the proposed strategies and clustered by the type of intervention, control group and T2D status. Our analysis was limited to randomized clinical studies conducted in Mexico or from international multicentric studies with Mexican participants involving nutrition, behavior, medication, or alternative medicine interventions. Some interventions of interest were compared with another active strategy (medication, behavior, physical activity or any other than placebo). This strategy can blunt the effect size of the intervention, because of the effect of active comparators in metabolic and anthropometric variables. We found that all studied interventions were better than placebo, or better than the selected comparator, and many of the published papers made individual paired contrasts between final and basal values. However, we decided to contrast treatments and reported the size of effects by cardiometabolic risk traits. With this strategy we had the advantage of computing the effect size over a maneuver the researchers considered the best comparator. The results should be interpreted considering these control groups defined by the researchers.

Interventions and Cardiometabolic Risk Traits

The 55 analyzed interventions (from 45 studies) were categorized as nutritional/behavioral with a total sample of 1,407 participants. Pharmacological interventions in Mexico included 1,134; and multinational interventions added 1,307 participants (Hispanics). Surgical procedures were 72, while alternative treatments included 235 individuals. We obtained a total of 4,155 participants from these trials.

The nutritional/behavioral strategies included supplemental, flavonoids, manipulation of macronutrient content diets (low fat, low carb, high protein) with caloric restriction, water consumption and physical activities. CBT combined with a low-calorie diet showed beneficial effects on BMI and waist circumference while combined with a low-fat diet decreased glucose and triglycerides. A cardioprotective structured

hypocaloric diet is more effective than the CBT approach in reducing metabolic syndrome (54). Daily flavonoid-rich chocolate (70% cocoa) intake improves fasting plasma glucose levels and insulin resistance parameter (HOMA-IR) and the lipid and glucose metabolism (41). The physical activity showed benefic but small and non-significant effects for the analyzed variables, due to the lack of enough sample size. Other systematic reviews focused on physical activity showed Hispanics had less leisure-time compared with other groups in the U.S., the most common activity was walking, but the most significant results were those with moderate to vigorous physical activity (67). It will be crucial to increase legislative policies to build environments that increase available opportunities for physical activities, particularly for this fast-growing population group.

Adherence to diet and exercise programs (45–60 min/d, 5 days per week) are part of the nutritional/behavioral interventions. Other studies reporting that water consumption habit (2–3 L/day) and partially decreasing sugar-sweetened beverage (SSB) intake of at least 250 kcal/d, with nutritional counseling was effective in increasing water intake (63), and additionally reduces cardiometabolic risks of drinking or eating less sugar in the diet promoting health benefits, although we found positive effect on plasma triglycerides and systolic blood pressure in our analysis, perhaps a consequence of the reduction of the SSB consumption.

The drug treatment in groups of participants with T2D, showed small effect size on improvement on BMI, waist circumference and triglycerides compared with larger effects for non-T2D. The orlistat group in T2D showed weight loss (BMI and waist circumference) lower level of glucose, triglycerides, and systolic blood pressure. Comparing these findings with other studies made in Mexican Americans living in the border shows the difficulty of losing weight with programs on self-management education, but the HbA1c improved (68).

Medication showed larger size of effects on BMI for combined formulations like orlistat, phentermine with topiramate, both approved by regulatory agencies. Other formulations like the combination of triiodothyronine with phentermine (non-approved by FDA but approved by its Mexican counterpart, COFEPRIS—Federal Committee for Protection from Sanitary Risks), and combination of DHA and EPA showed effect on BMI. The authors of the formulations did not show the result on serum glucose neither reported any adverse effect. There was no replication for any of these treatments. We found a couple of sibutramine trials. This is a retired medication because the cardiovascular risk was greater than the benefits (69), especially for the difficulty to identify patients with silent cardiovascular disease (70).

Surgical intervention is the most effective treatment for patients with morbid obesity (71). The percentage of body weight loss with this intervention ranges between 33 and 77% in a period of 24 months, thus demonstrating its effectiveness (72, 73). However, in our surgical papers, no significant differences were found in the percentage of weight loss, this due to the fact that both the intervention group and the control group had equivalent surgeries (74). One of the studies compared banded vs. unbanded laparoscopic roux-en-Y gastric bypass and follow

up weight changes for 24 months (61), in a second analysis, no differences were found between these procedures after 5 years of follow-up (75).

Risk of Bias

In general, many of the studied interventions are challenging to blind for obvious reasons. For example, a comparison of nutritional interventions vs. exercise or CBT cannot be blind. However, there is a possibility to blind the evaluators, but no studies explicitly describe this strategy. We found that heterogeneity of the results was partially attributable to basal differences between contrasting groups, for example in the study of Rosado et al. (46) the diastolic and systolic blood pressure were significantly different between the studied low fat milk groups compared with controls. Some surgical studies for weight loss made in the Instituto de Nutrición Salvador Zubirán in Mexico City blinded the abdominal wall for patients and evaluators when they compared the open abdominal approach vs. the laparoscopic method. The risk of bias can be lessened but still can compromise the results of the studies. The difficulty in addressing nutritional or behavioral interventions is manifest in studies analyzing racial/ethnic disparities. Multilevel church-based interventions considering socio-ecological influence showed a greater impact if they consider program interventions tailored to specific communities.

Limitations

The most important limitations are the lack of replication studies with the same medications, and the small sample size in most of the studies. There was a wide variety for the selection criteria of participants (i.e., some studies had too specific eligibility criteria for sex, age and BMI compared with other studies with wide range of options), and, despite similar genetic background, the participants live in sites embedded in cultural diversity (i.e., Mexico City's environment problems differ from those in States close to the Mexico-U.S. border). We address a broad question regarding the cardiometabolic traits and found a considerable heterogeneity of the studies. We addressed this problem using meta-regression to statistically weight the main confounders across studies and the use of a network Meta-Analysis to compute the magnitude of contrasts between treatment effects. Due to these limitations the obtention of unstable coefficients is possible, therefore, these analyses should be repeated in the future with a greater number of studies.

The small sample sizes from many of the included studies resulted in low statistical power for contrasting between treatment, and the lack of replication studies increased the standard error for the analysis. The new medications approved by FDA have been tested scarcely in the Mexican population. About 44% of the studies were performed in the limit time of placebo effects (about 12 weeks), but those with more time showed effects on the HDL cholesterol levels.

Southern states of Mexico are experiencing an epidemiological transition toward mortality causes, like T2D, toward the Northern states (76). The Studies we gathered do not have information regarding the socioeconomic strata of the patients, we do not have data to analyze if social determinants affect the

adherence or the response to the treatments. This issue should be considered in coming studies for being analyzed.

Future new and replication studies should consider larger periods for treatments to reduce placebo effects. Future reviews and Meta-Analysis should analyze anti-obesity interventions in children and adolescents as well as in old age populations. These suggestions agree with the Healthy People 2030 recommendation on study effective strategies to diminish obesity in children and adolescents (77).

The Mexican states in which research on anti-obesity interventions was conducted involved only 10 of the 32 states. The Mexico-U.S. border has sister states: California-Baja California, Arizona-Sonora, New Mexico-Chihuahua, Texas with Chihuahua, Coahuila, Nuevo León, and Tamaulipas. There is a lack of Meta-Analysis in the Mexican-American population for anti-obesity and anti-diabetic treatments or their influence on cardiometabolic traits. Future studies are needed to fulfill this gap. On the other hand, the Binational initiative should improve the collaborative studies in the U.S.-Mexico border to address interventions in this growing population. The programs from this initiative address environmental protection, communication committees in particular communities (78). The U.S.-Mexico Border Health Commission has agreements with the Secretary of Health from both countries, and this agency supports initiatives in health security (79). The programs include prevention and wellness using guidelines for eating healthy, physical activity, and drug misuse and abuse prevention.

CONCLUSIONS

Clinical experience of researchers on obesity began in 1959 in Mexico City, yet publications on obesity interventions in randomized clinical trials studies in Mexico did not appear until 1996, mainly focused on pharmaceutical, nutritional, or physical activity interventions. Adult participants included in these studies were predominantly from the central and northern Mexican states, with a clear absence from the coastal and southern states. Anti-obesity studies in the Mexican population include small samples and reduced time for interventions. A strategy to improve the statistical power for the studies is to conduct multicentric studies, and a compromise from the State or private industries to provide sufficient financial resources.

A national research network is feasible for answering relevant questions regarding anti-obesity interventions and its metabolic consequences. It is clear that not all cardiometabolic traits have the same response to the intervention. The inclusion of Mexican Americans and Mexican immigrants living in the U.S., would be desirable to clarify the importance of different approaches to tackle this problem.

DATA AVAILABILITY STATEMENT

The raw data supporting the conclusions of this article will be made available by the authors, without undue reservation.

AUTHOR CONTRIBUTIONS

EG-O, JM-E, AD-B, AP-T, and JL-A supervised the findings and with YM-L, SR-C, AB-F, EL-S, OM-C, EN-G, and MR-D contributed to data collection, extraction, and analysis. CR-P, KC, BT, and JL-A made critical contributions and final approval of the manuscript. EG-O, YM-L, AD-B, SR-C, LP-N, and JL-A performed the statistical analysis and with JM-E developed the theory. All authors discussed the results and contributed to the final manuscript.

ACKNOWLEDGMENTS

We thank Dr. Beatriz Tapia, Office of Faculty Affairs and Department of Pediatrics, School of Medicine, The University of Texas Rio Grande Valley, Harlingen, Texas, United States; and Dr. Edith Cantú de Luna, Principal of the Universidad Mexico-Americana del Norte, Reynosa, Tamaulipas, Mexico, for their generous support in this paper publication. We also thank Dr. Victoria Valles from the National Institute of Medical Sciences and Nutrition Dr. Salvador Zubiran (INCMNSZ) for the share of invaluable experience about the ENEC-93. Last, we would like to pay our gratitude and our respects to Dr. Gonzalez-Barranco. He was a pioneer in obesity research since the 1970s, Dr. Gonzalez-Barranco passed away in December of 2020.

SUPPLEMENTARY MATERIAL

The Supplementary Material for this article can be found online at: <https://www.frontiersin.org/articles/10.3389/fmed.2021.665023/full#supplementary-material>

Supplementary Figure 1 | Meta-regression of nutritional/behavioral effects on the mean difference in HDL-C (**A**) and triglycerides (**B**) concentrations, adjusted by mean age, BMI, duration of treatment (months), geographical latitude, and use of placebo or active comparator. The gray zone represents the 95% CI of the regression. Liraglutide was used in participants with the highest obesity and in geographic locations in northern Mexico. AGE's, Advanced glycation end-product; AntiBP, Antiblood pressure medication; CBT, Cognitive-behavioral therapy; Dark Choc, Dark chocolate, Hipol; LCD, Low carbohydrate diet; LFDt, Low fat diet; LFM, Low fat milk, Micronut; Phys Act, Physical activity; PMR, Partial meal replacement; WEP, Water and education provision.

Supplementary Figure 2 | Meta regression of medication effects on the mean difference in diastolic blood pressure adjusted by mean age, BMI, duration of treatment (months), geographical latitude, and use of placebo or active comparator. The (**A**) shows the effect of BMI and the (**B**) the geographical location. The gray zone represents the 95%CI of the regression. Liraglutide was used in participants with the highest obesity and in geographical locations in northern Mexico. The Form1 and Form2 are described in the text, they are not approved by FDA. Met, Metformin; Sibut, Sibutramine; Orlit, Orlistat; Glim, Glimepiride; Phent, Phentermine; Top, Topiramate.

Supplementary Figure 3 | Network meta-analysis of studies examining the efficacy of drug treatments in patients with obesity on (**A**) BMI in non-diabetic patients compared to placebo, (**B**) BMI in patients with diabetes compared to metformin. The colors of the edges and nodes refer to the risk of bias: low (green), moderate (yellow), and high (red). DHA and EPA doses are in mg per day. Met, Metformin; Diac+Met, Diacerein + Metformin. The Form1 and Form2 are described in the text, they are not approved by FDA but approved by its Mexican counterpart, COFEPRIS. Plc, Placebo.

Supplementary Table 1 | Network meta-analysis results matrix. Estimates of the effect of treatments (standardized mean differences with 95% CI) relative to placebo (Plc). The Form1 and Form2 are described in the text, they are not approved by FDA.

Supplementary Table 2 | Network meta-analysis results matrix. Estimates of the effect of treatments (standardized mean differences with 95% CI) relative to metformin in patients with diabetes. The Form1 and Form2 are described in the text, they are not approved by FDA.

REFERENCES

- Komaroff M. For researchers on obesity: historical review of extra body weight definitions. *J Obes.* (2016) 2016:2460285. doi: 10.1155/2016/2460285
- Weir CB, Jan A. *BMI Classification Percentile and Cut Off Points*. Treasure Island, FL: Stat Pearls Publishing (2020).
- Rtveladze K, Marsh T, Barquera S, Sanchez Romero LM, Levy D, Melendez G, et al. Obesity prevalence in Mexico: impact on health and economic burden. *Public Health Nutr.* (2014) 17:233–9. doi: 10.1017/S1368980013000086
- Kondrup J. Basic concepts in nutrition: energy and protein balance. *e-SPEN.* (2008) 3:e117–20. doi: 10.1016/j.eclnm.2008.02.003
- Lopez-Alvarenga JC, Montesinos-Cabrera RA, Velazquez-Alva C, Gonzalez-Barranco J. Short stature is related to high body fat composition despite body mass index in a Mexican population. *Arch Med Res.* (2003) 34:137–40. doi: 10.1016/S0188-4409(03)00002-X
- Castro-Porras LV, Rojas-Russell ME, Aedo-Santos A, Wynne-Bannister EG, Lopez-Cervantes M. Stature in adults as an indicator of socioeconomic inequalities in Mexico. *Rev Panam Salud Publica.* (2018) 42:e29. doi: 10.26633/RPSP.2018.29
- Secretaría de Salud. *Norma Oficial Mexicana Nom-174-Ssa1-1998, Para El Manejo Integral De La Obesidad* (1998).
- United States Department of Health and Human Services. *Healthy People 2020*. United States Department of Health and Human Services, Washington, DC (2010). Available online at: <https://www.healthypeople.gov/2020/About-Healthy-People>
- Maldonado LE, Albrecht SS. Does the immigrant advantage in overweight/obesity persist over time in Mexican American youth? NHANES 1988–1994 to 2005–2014. *Obesity.* (2018) 26:1057–62. doi: 10.1002/oby.22178
- Yoshida Y, Scribner R, Chen L, Broyles S, Phillippi S, Tseng TS. Role of age and acculturation in diet quality among Mexican Americans - findings from the national health and nutrition examination survey, 1999–2012. *Prev Chronic Dis.* (2017) 14:E59. doi: 10.5888/pcd14.170004
- Hanley MJ, Abernethy DR, Greenblatt DJ. Effect of obesity on the pharmacokinetics of drugs in humans. *Clin Pharmacokinet.* (2010) 49:71–87. doi: 10.2165/11318100-000000000-00000
- Initiative NOE. *The Practical Guide. Identification, Evaluation, and Treatment of Overweight and Obesity in Adults*. NIH publication Number 00-4084 (2000).
- Yumuk V, Tsigos C, Fried M, Schindler K, Busetto L, Micic D, et al. European guidelines for obesity management in adults. *Obes Facts.* (2015) 8:402–24. doi: 10.1159/000442721
- Apovian CM, Aronne LJ, Bessesen DH, McDonnell ME, Murad MH, Pagotto U, et al. Pharmacological management of obesity: an endocrine Society clinical practice guideline. *J Clin Endocrinol Metab.* (2015) 100:342–62. doi: 10.1210/jc.2014-3415
- Ehara T. *Mexico and its Obesity Epidemic. Global Food Cultures.* (2018). Available online at: <https://wp.nyu.edu/steinhardt-gfcmexico2018/2018/04/11/mexico-and-its-obesity-epidemic/> (accessed January 4, 2021).
- García-Oropesa EM, Bustamante-Fuentes A, Carter K, Diaz-Badillo A, Lopez-Alvarenga JC, Lopez-Sosa EB, et al. *Clinical Randomized Trials for Anti-Obesity Interventions in the Mexican Population: A Systematic Review With Meta-Analysis*. PROSPERO 2020 CRD42020221436. Available online at: https://www.crd.york.ac.uk/prospero/display_record.php?ID=CRD42020221436 (accessed September 10, 2021).
- Meader N, King K, Llewellyn A, Norman G, Brown J, Rodgers M, et al. A checklist designed to aid consistency and reproducibility of GRADE assessments: development and pilot validation. *Syst Rev.* (2014) 3:82. doi: 10.1186/2046-4053-3-82
- Martínez-Ezquerro JD, Ruiz-Cejudo SM, Bustamante-Fuentes A, Díaz-Badillo Á, García-Oropesa EM, López-Sosa EB, et al. Consenso experto en tiempos de COVID-19: aplicaciones del método Delphi en materia de salud. *Cir Cir.* (2020) 89:120–9. doi: 10.24875/CIRU.20000936
- Gonzalez-Heredia T, Hernandez-Corona DM, Gonzalez-Ortiz M, Martinez-Abundis E. Effect of linagliptin versus metformin on glycemic variability in patients with impaired glucose tolerance. *Diabetes Technol Ther.* (2017) 19:471–5. doi: 10.1089/dia.2017.0020
- Gonzalez-Ortiz M, Martinez-Abundis E, Hernandez-Corona DM, Ramirez-Rodriguez AM. Effect of tadalafil administration on insulin secretion and insulin sensitivity in obese men. *Acta Clin Belg.* (2017) 72:326–30. doi: 10.1080/17843286.2017.1293759
- le Roux CW, Astrup A, Fujioka K, Greenway F, Lau DCW, Van Gaal L, et al. 3 years of liraglutide versus placebo for type 2 diabetes risk reduction and weight management in individuals with prediabetes: a randomised, double-blind trial. *Lancet.* (2017) 389:1399–409. doi: 10.1016/S0140-6736(17)30069-7
- O'Neil PM, Garvey WT, Gonzalez-Campoy JM, Mora P, Ortiz RV, Guerrero G, et al. Effects of liraglutide 3.0 mg on weight and risk factors in hispanic versus non-hispanic populations: subgroup analysis from scale randomized trials. *Endocr Pract.* (2016) 22:1277–87. doi: 10.4158/EP151181.OR
- Sanchez-Rodriguez MA, Zacarias-Flores M, Castrejon-Delgado L, Ruiz-Rodriguez AK, Mendoza-Nunez VM. Effects of hormone therapy on oxidative stress in postmenopausal women with metabolic syndrome. *Int J Mol Sci.* (2016) 17:1388. doi: 10.3390/ijms17091388
- Sanchez-Munoz V, Salas-Romero R, Del Villar-Morales A, Martinez-Coria E, Pegueros-Perez A, Franco-Sanchez JG. [Decrease of liver fat content by aerobic exercise or metformin therapy in overweight or obese women]. *Rev Invest Clin.* (2013) 65:307–17.
- Gonzalez-Acevedo O, Hernandez-Sierra JF, Salazar-Martinez A, Mandeville PB, Valadez-Castillo FJ, De La Cruz-Mendoza E, et al. [Effect of Omega 3 fatty acids on body female obese composition]. *Arch Latinoam Nutr.* (2013) 63:224–31.
- Martínez-Abundis E, Valera-Gonzalez I, Hernandez-Salazar E, Gonzalez-Ortiz M. Effect of metformin and sibutramine on insulin sensitivity and adiposity in obese patients. *Obes Metab.* (2010) 6:100–4.
- Meaney E, Vela A, Samaniego V, Meaney A, Asbun J, Zempolteca JC, et al. Metformin, arterial function, intima-media thickness and nitrooxidation in metabolic syndrome: the mefisto study. *Clin Exp Pharmacol Physiol.* (2008) 35:895–903. doi: 10.1111/j.1440-1681.2008.04920.x
- Gonzalez-Ortiz M, Martinez-Abundis E, Kam-Ramos AM, Hernandez-Salazar E, Ramos-Zavala MG. Effect of ezetimibe on insulin sensitivity and lipid profile in obese and dyslipidaemic patients. *Cardiovasc Drugs Ther.* (2006) 20:143–6. doi: 10.1007/s10557-006-7805-x
- Toplak H, Ziegler O, Keller U, Hamann A, Godin C, Wittert G, et al. X-PERT: weight reduction with orlistat in obese subjects receiving a mildly or moderately reduced-energy diet: early response to treatment predicts weight maintenance. *Diabetes Obes Metab.* (2005) 7:699–708. doi: 10.1111/j.1463-1326.2005.00483.x
- Zaragoza RM, Lonngi G, Ortiz RA, Huerta DR. Comparison of two formulations of d-norpseudoephedrine and placebo in obese patients treated during six months [Comparación de dos formulaciones de d-norpseudoefedrina y placebo en pacientes obesos tratados durante seis meses]. *Med Int Mex.* (2001) 17:260–71.
- Cuellar GE, Ruiz AM, Monsalve MC, Berber A. Six-month treatment of obesity with sibutramine 15 mg: a double-blind, placebo-controlled monocenter clinical trial in a Hispanic population. *Obes Res.* (2000) 8:71–82. doi: 10.1038/oby.2000.10
- Fanghanel G, Cortinas L, Sanchez-Reyes L, Berber A. A clinical trial of the use of sibutramine for the treatment of patients suffering essential obesity. *Int J Obes Relat Metab Disord.* (2000) 24:144–50. doi: 10.1038/sj.ijo.0801098
- Fanghanel G, Cortinas L, Sanchez-Reyes L, Berber A. Second phase of a double-blind study clinical trial on Sibutramine for the treatment of patients suffering essential obesity: 6 months after treatment cross-over. *Int J Obes Relat Metab Disord.* (2001) 25:741–7. doi: 10.1038/sj.ijo.0801592

34. Ramos-Zavala MG, Gonzalez-Ortiz M, Martinez-Abundis E, Robles-Cervantes JA, Gonzalez-Lopez R, Santiago-Hernandez NJ. Effect of diacerein on insulin secretion and metabolic control in drug-naive patients with type 2 diabetes: a randomized clinical trial. *Diabetes Care*. (2011) 34:1591–4. doi: 10.2337/dc11-0357
35. Fanghanel G, Silva U, Sanchez-Reyes L, Sisson D, Sotres D, Torres EM. Effects of metformin on fibrinogen levels in obese patients with type 2 diabetes. *Rev Invest Clin*. (1998) 50:389–94.
36. Fanghanel G, Sanchez-Reyes L, Trujillo C, Sotres D, Espinosa-Campos J. Metformin's effects on glucose and lipid metabolism in patients with secondary failure to sulfonylureas. *Diabetes Care*. (1996) 19:1185–9. doi: 10.2337/diacare.19.11.1185
37. Villar MM, Martinez-Abundis E, Preciado-Marquez RO, Gonzalez-Ortiz M. Effect of diacerein as an add-on to metformin in patients with type 2 diabetes mellitus and inadequate glycemic control. *Arch Endocrinol Metab*. (2017) 61:188–92. doi: 10.1590/2359-3997000000242
38. Hernandez-Bastida A. Phentermine and topiramato vs phentermine plus placebo in patients with overweight or obesity class I or II [Fentermina y topiramato contra fentermina más placebo en pacientes con sobrepeso u obesidad clase I o II]. *Med Int Mex*. (2015) 31:125–36.
39. Gonzalez-Ortiz M, Martinez-Abundis E. Grupo para el Tratamiento de la Diabetes Mellitus con C. [Efficacy and safety of glimepiride plus metformin in a single presentation, as combined therapy, in patients with type 2 diabetes mellitus and secondary failure to glibenclamide, as monotherapy]. *Rev Invest Clin*. (2004) 56:327–33.
40. Halpern A, Mancini MC, Suplicy H, Zanella MT, Repetto G, Gross J, et al. Latin-American trial of orlistat for weight loss and improvement in glycaemic profile in obese diabetic patients. *Diabetes Obes Metab*. (2003) 5:180–8. doi: 10.1046/j.1463-1326.2003.00262.x
41. Leyva-Soto A, Chavez-Santoscoy RA, Lara-Jacobo LR, Chavez-Santoscoy AV, Gonzalez-Cobian LN. Daily consumption of chocolate rich in flavonoids decreases cellular genotoxicity and improves biochemical parameters of lipid and glucose metabolism. *Molecules*. (2018) 23:2220. doi: 10.20944/preprints201807.0399.v1
42. Padilla-Camberos E, Barragan-Alvarez CP, Diaz-Martinez NE, Rathod V, Flores-Fernandez JM. Effects of agave fructans (agave tequilana weber var. azul) on body fat and serum lipids in obesity. *Plant Foods Hum Nutr*. (2018) 73:34–9. doi: 10.1007/s11130-018-0654-5
43. Hernandez-Corona DM, Martinez-Abundis E, Gonzalez-Ortiz M. Effect of fucoidan administration on insulin secretion and insulin resistance in overweight or obese adults. *J Med Food*. (2014) 17:830–2. doi: 10.1089/jmf.2013.0053
44. Martinez-Abundis E, Gonzalez-Ortiz M, Mercado-Sesma AR, Reynoso-von-Drateln C, Moreno-Andrade A. Effect of avocado soybean unsaponifiables on insulin secretion and insulin sensitivity in patients with obesity. *Obes Facts*. (2013) 6:443–8. doi: 10.1159/000355720
45. Tovar AR, Caamano Mdel C, Garcia-Padilla S, Garcia OP, Duarte MA, Rosado JL. The inclusion of a partial meal replacement with or without inulin to a calorie restricted diet contributes to reach recommended intakes of micronutrients and decrease plasma triglycerides: a randomized clinical trial in obese Mexican women. *Nutr J*. (2012) 11:44. doi: 10.1186/1475-2891-11-44
46. Rosado JL, Garcia OP, Ronquillo D, Hervert-Hernandez D, Caamano Mdel C, Martinez G, et al. Intake of milk with added micronutrients increases the effectiveness of an energy-restricted diet to reduce body weight: a randomized controlled clinical trial in Mexican women. *J Am Diet Assoc*. (2011) 111:1507–16. doi: 10.1016/j.jada.2011.07.011
47. Hernandez-Gonzalez SO, Gonzalez-Ortiz M, Martinez-Abundis E, Robles-Cervantes JA. Chitosan improves insulin sensitivity as determined by the euglycemic-hyperinsulinemic clamp technique in obese subjects. *Nutr Res*. (2010) 30:392–5. doi: 10.1016/j.nutres.2010.06.005
48. Ble-Castillo JL, Aparicio-Trapala MA, Francisco-Luria MU, Cordova-Uscanga R, Rodriguez-Hernandez A, Mendez JD, et al. Effects of native banana starch supplementation on body weight and insulin sensitivity in obese type 2 diabetics. *Int J Environ Res Public Health*. (2010) 7:1953–62. doi: 10.3390/ijerph7051953
49. Gomez-Garcia A, Hernandez-Salazar E, Gonzalez-Ortiz M, Martinez-Abundis E. [Effect of oral zinc administration on insulin sensitivity, leptin and androgens in obese males]. *Rev Med Chil*. (2006) 134:279–84. doi: 10.4067/S0034-98872006000300002
50. Campos-Nonato I, Hernandez L, Barquera S. Effect of a high-protein diet versus standard-protein diet on weight loss and biomarkers of metabolic syndrome: a randomized clinical trial. *Obes Facts*. (2017) 10:238–51. doi: 10.1159/000471485
51. de Jesus Romero-Prado MM, Curiel-Beltran JA, Miramontes-Espino MV, Cardona-Munoz EG, Rios-Arellano A, Balam-Salazar LB. Dietary flavonoids added to pharmacological antihypertensive therapy are effective in improving blood pressure. *Basic Clin Pharmacol Toxicol*. (2015) 117:57–64. doi: 10.1111/bcpt.12360
52. Rodriguez-Hernandez H, Cervantes-Huerta M, Rodriguez-Moran M, Guerrero-Romero F. Decrease of aminotransferase levels in obese women is related to body weight reduction, irrespective of type of diet. *Ann Hepatol*. (2011) 10:486–92. doi: 10.1016/S1665-2681(19)31517-0
53. Madero M, Arriaga JC, Jalal D, Rivard C, McFann K, Perez-Mendez O, et al. The effect of two energy-restricted diets, a low-fructose diet versus a moderate natural fructose diet, on weight loss and metabolic syndrome parameters: a randomized controlled trial. *Metabolism*. (2011) 60:1551–9. doi: 10.1016/j.metabol.2011.04.001
54. Perichart-Perera O, Balas-Nakash M, Munoz-Manrique C, Legorreta-Legorreta J, Rodriguez-Cano A, Mier-Cabrera J, et al. Structured hypocaloric diet is more effective than behavioral therapy in reducing metabolic syndrome in Mexican postmenopausal women: a randomized controlled trial. *Menopause*. (2014) 21:711–20. doi: 10.1097/GME.0000000000000160
55. Macias-Cervantes MH, Rodriguez-Soto JM, Uribarri J, Diaz-Cisneros FJ, Cai W, Garay-Sevilla ME. Effect of an advanced glycation end product-restricted diet and exercise on metabolic parameters in adult overweight men. *Nutrition*. (2015) 31:446–51. doi: 10.1016/j.nut.2014.10.004
56. Rodriguez-Hernandez H, Morales-Amaya UA, Rosales-Valdez R, Rivera-Hinojosa E, Rodriguez-Moran M, Guerrero-Romero F. Adding cognitive behavioural treatment to either low-carbohydrate or low-fat diets: differential short-term effects. *Br J Nutr*. (2009) 102:1847–53. doi: 10.1017/S0007114509991231
57. Moran S, Uribe M, Prado ME, de la Mora G, Munoz RM, Perez MF, et al. [Effects of fiber administration in the prevention of gallstones in obese patients on a reducing diet A clinical trial]. *Rev Gastroenterol Mex*. (1997) 62:266–72.
58. Garcia-Vivas JM, Galaviz-Hernandez C, Becerril-Chavez F, Lozano-Rodriguez F, Zamorano-Carrillo A, Lopez-Camarillo C, et al. Acupoint catgut embedding therapy with moxibustion reduces the risk of diabetes in obese women. *J Res Med Sci*. (2014) 19:610–6.
59. Hernandez-Lepe MA, Wall-Medrano A, Lopez-Diaz JA, Juarez-Oropeza MA, Hernandez-Torres RP, Ramos-Jimenez A. Hypolipidemic effect of arthrospira (spirulina) maxima supplementation and a systematic physical exercise program in overweight and obese men: a double-blind, randomized, and crossover controlled trial. *Mar Drugs*. (2019) 17:250. doi: 10.3390/md17050270
60. Alvarado-Reynoso B, Ambriz-Tututi M. Effects of repetitive transcranial magnetic stimulation in combination with a low-carbohydrate diet in overweight or obese patients. A randomized controlled trial. *Obes Med*. (2019) 14:100095. doi: 10.1016/j.obmed.2019.100095
61. Arceo-Olaiz R, Espana-Gomez MN, Montalvo-Hernandez J, Velazquez-Fernandez D, Pantoja JP, Herrera MF. Maximal weight loss after banded and unbanded laparoscopic Roux-en-Y gastric bypass: a randomized controlled trial. *Surg Obes Relat Dis*. (2008) 4:507–11. doi: 10.1016/j.soard.2007.11.006
62. Robles-Cervantes JA, Martinez-Abundis E, Gonzalez-Ortiz M, Cardenas-Camarena L, Hernandez-Salazar E, Olvera-Ozuna R. Behavior of insulin sensitivity and its relation to leptin and tumor necrosis factor-alpha in obese women undergoing liposuction: 6-month follow-up. *Obes Surg*. (2007) 17:1242–7. doi: 10.1007/s11695-007-9213-0
63. Hernandez-Cordero S, Barquera S, Rodriguez-Ramirez S, Villanueva-Borbolla MA, Gonzalez de Cossio T, Dommarco JR, et al. Substituting water for sugar-sweetened beverages reduces circulating triglycerides and the prevalence of metabolic syndrome in obese but not in overweight Mexican women in a randomized controlled trial. *J Nutr*. (2014) 144:1742–52. doi: 10.3945/jn.114.193490

64. Jadad AR, Moore RA, Carroll D, Jenkinson C, Reynolds DJ, Gavaghan DJ, et al. Assessing the quality of reports of randomized clinical trials: is blinding necessary? *Control Clin Trials*. (1996) 17:1–12. doi: 10.1016/0197-2456(95)00134-4
65. Cantrell L. Redotex(R) revisited: intentional overdose with an illegal weight loss product. *J Emerg Med*. (2012) 43:e147–8. doi: 10.1016/j.jemermed.2011.07.023
66. Whelton PK, Appel L, Charleston J, Dalcin AT, Ewart C, Fried L, et al. The effects of nonpharmacologic interventions on blood pressure of persons with high normal levels. Results of the trials of hypertension prevention, phase I. *JAMA*. (1992) 267:1213–20. doi: 10.1001/jama.267.9.1213
67. Loya JC. Systematic review of physical activity interventions in hispanic adults. *Hisp Health Care Int*. (2018) 16:174–88. doi: 10.1177/1540415318809427
68. Brown SA, Garcia AA, Kouzekanani K, Hanis CL. Culturally competent diabetes self-management education for Mexican Americans: the starr county border health initiative. *Diabetes Care*. (2002) 25:259–68. doi: 10.2337/diacare.25.2.259
69. Williams G. Withdrawal of sibutramine in Europe. *BMJ*. (2010) 340:c824. doi: 10.1136/bmj.c824
70. Curfman GD, Morrissey S, Drazen JM. Sibutramine—another flawed diet pill. *N Engl J Med*. (2010) 363:972–4. doi: 10.1056/NEJMe1007993
71. Peterli R, Wolnerhanssen BK, Peters T, Vetter D, Kroll D, Borbely Y, et al. Effect of laparoscopic sleeve gastrectomy vs laparoscopic roux-en-y gastric bypass on weight loss in patients with morbid obesity: the SM-BOSS randomized clinical trial. *JAMA*. (2018) 319:255–65. doi: 10.1001/jama.2017.20897
72. Buchwald H, Buchwald JN, McGlennon TW. Systematic review and meta-analysis of medium-term outcomes after banded Roux-en-Y gastric bypass. *Obes Surg*. (2014) 24:1536–51. doi: 10.1007/s11695-014-1311-1
73. Heymsfield SB, Wadden TA. Mechanisms, pathophysiology, and management of obesity. *N Engl J Med*. (2017) 376:1492. doi: 10.1056/NEJMc1701944
74. Stanford FC, Alfaris N, Gomez G, Ricks ET, Shukla AP, Corey KE, et al. The utility of weight loss medications after bariatric surgery for weight regain or inadequate weight loss: a multi-center study. *Surg Obes Relat Dis*. (2017) 13:491–500. doi: 10.1016/j.soard.2016.10.018
75. Zarate X, Arceo-Olaiz R, Montalvo Hernandez J, Garcia-Garcia E, Pablo Pantoja J, Herrera MF. Long-term results of a randomized trial comparing banded versus standard laparoscopic Roux-en-Y gastric bypass. *Surg Obes Relat Dis*. (2013) 9:395–7. doi: 10.1016/j.soard.2012.09.009
76. Manzanares-Rivera JL. Mortalidad por diabetes tipo 2 en las fronteras de Mexico. *Población y Salud en Mesoamérica*. (2017) 14:1–19. doi: 10.15517/psm.v14i2.27028
77. Promotion OoDPaH. *Overweight and Obesity*. (2020). Available online at: <https://health.gov/healthypeople/objectives-and-data/browse-objectives/overweight-and-obesity> (accessed January 11, 2021).
78. United States Environmental Protection Agency. *What Is Border 2020?* (2020). Available online at: <https://www.epa.gov/usmexicoborder/what-border-2020> (accessed September 1–January 4 2020–2021).
79. U.S. Department of Health & Human Services. *U.S.-Mexico Border Health Commission*. (2020). Available online at: <https://www.hhs.gov/about/agencies/oga/about-oga/what-we-do/international-relations-division/americas/border-health-commission/index.html>

Conflict of Interest: The authors declare that the research was conducted in the absence of any commercial or financial relationships that could be construed as a potential conflict of interest.

Publisher's Note: All claims expressed in this article are solely those of the authors and do not necessarily represent those of their affiliated organizations, or those of the publisher, the editors and the reviewers. Any product that may be evaluated in this article, or claim that may be made by its manufacturer, is not guaranteed or endorsed by the publisher.

Copyright © 2021 Garcia-Oropesa, Martinez-Lopez, Ruiz-Cejudo, Martínez-Ezquerro, Diaz-Badillo, Ramirez-Pfeiffer, Bustamante-Fuentes, Lopez-Sosa, Moctezuma-Chavez, Nava-Gonzalez, Perales-Torres, Perez-Navarro, Rosas-Diaz, Carter, Tapia and Lopez-Alvarenga. This is an open-access article distributed under the terms of the Creative Commons Attribution License (CC BY). The use, distribution or reproduction in other forums is permitted, provided the original author(s) and the copyright owner(s) are credited and that the original publication in this journal is cited, in accordance with accepted academic practice. No use, distribution or reproduction is permitted which does not comply with these terms.