



<b>Publication Year</b>	2019
<b>Acceptance in OA @INAF</b>	2020-11-27T09:44:20Z
<b>Title</b>	An ultra diffuse galaxy in the NGC 5846 group from the VEGAS survey
<b>Authors</b>	Forbes, Duncan A.; Gannon, Jonah; Couch, Warrick J.; IODICE, ENRICHETTA; SPAVONE, MARILENA; et al.
<b>DOI</b>	10.1051/0004-6361/201935499
<b>Handle</b>	<a href="http://hdl.handle.net/20.500.12386/28573">http://hdl.handle.net/20.500.12386/28573</a>
<b>Journal</b>	ASTRONOMY & ASTROPHYSICS
<b>Number</b>	626

# An ultra diffuse galaxy in the NGC 5846 group from the VEGAS survey

Duncan A. Forbes<sup>1</sup>, Jonah Gannon<sup>1</sup>, Warrick J. Couch<sup>1</sup>, Enrichetta Iodice<sup>2</sup>, Marilena Spavone<sup>2</sup>, Michele Cantiello<sup>3</sup>, Nicola Napolitano<sup>4</sup>, and Pietro Schipani<sup>2</sup>

<sup>1</sup> Centre for Astrophysics & Supercomputing, Swinburne University, Hawthorn, VIC 3122, Australia  
e-mail: dforbes@swin.edu.au

<sup>2</sup> INAF-Astronomical Observatory of Capodimonte, Salita Moiariello 16, 80131 Naples, Italy

<sup>3</sup> INAF Astronomical Observatory of Abruzzo, Via Maggini snc, 64100 Teramo, Italy

<sup>4</sup> School of Physics and Astronomy, Sun Yat-sen University Zhuhai Campus, 2 Daxue Road, Tangjia, Zhuhai, Guangdong 519082, PR China

Received 19 March 2019 / Accepted 10 May 2019

## ABSTRACT

**Context.** Many ultra diffuse galaxies (UDGs) have now been identified in clusters of galaxies. However, the number of nearby UDGs suitable for detailed follow-up remain rare.

**Aims.** Our aim is to begin to identify UDGs in the environments of nearby bright early-type galaxies from the VEGAS survey.

**Methods.** Here we use a deep  $g$  band image of the NGC 5846 group, taken as part of the VEGAS survey, to search for UDGs.

**Results.** We found one object with properties of a UDG if it associated with the NGC 5846 group, which seems likely. The galaxy, we name NGC 5846\_UDG1, has an absolute magnitude of  $M_g = -14.2$ , corresponding to a stellar mass of  $\sim 10^8 M_\odot$ . It also reveals a system of compact sources which are likely globular clusters. Based on the number of globular clusters detected we estimate a halo mass that is greater than  $8 \times 10^{10} M_\odot$  for UDG1.

**Key words.** galaxies: dwarf – galaxies: formation – galaxies: star clusters: general – galaxies: halos

## 1. Introduction

Since the identification in 2015 of around 50 galaxies given the name ultra diffuse galaxies (UDGs) in the Coma cluster by van Dokkum et al. (2015), we now know of hundreds of UDG candidates in the direction of the Coma cluster (Yagi et al. 2016). Spectroscopic followup of some of these candidates reveals a high fraction associated with the Coma cluster at a distance of  $\sim 100$  Mpc (Alabi et al. 2018). With a UDG defined to have an effective radius  $R_e > 1.5$  kpc and a central  $g$  band surface brightness  $\mu_0 > 24$  mag sq. arcsec, they have been found in the full range of galactic environments from relative isolation (Martínez-Delgado et al. 2016; Román et al. 2019), to groups (Román & Trujillo 2017), to the richest clusters (Janssens et al. 2017). Further studies have revealed that the abundance of UDGs scales in a near-linear fashion with the halo mass of the group/cluster (Mancera Piña et al. 2018), so that a  $10^{13} M_\odot$  group would be expected to host half a dozen to a dozen UDGs within its virial radius.

The number of nearby ( $\leq 30$  Mpc) UDGs in the literature is still relatively small. Within the Local Group, the WLM dwarf has a size and surface brightness consistent with that of a UDG (e.g. see Fig. 6 of Greco et al. 2018). Additional nearby UDG candidates, including those associated with the Cen A group (distance = 3.5 Mpc) are listed by Rong et al. (2017). Recently, Müller et al. (2018) identified 5 UDG candidates with effective radii  $\geq 1.5$  kpc if associated with the Leo group (distance 10 Mpc). To date, there has been no published distance confirmation for these UDG candidates. Trujillo et al. (2017) identified one UDG (UGC 2162) in the M77 group, which is located at a

distance of 12 Mpc. Two UDGs (DF2 and DF4) have been associated with the NGC 1052 group (distance  $\sim 20$  Mpc) based on surface brightness fluctuations (see Blakeslee & Cantiello 2018 for a recent analysis) and both have been inferred to have little, or no, dark matter (van Dokkum et al. 2019). However, the distance, and the claim for the paucity of dark matter, are the subject of much debate in the literature (e.g. Trujillo et al. 2019). Merritt et al. (2016) has identified 4 very diffuse UDGs ( $\mu_0 = 25.6\text{--}27.7$  mag sq. arcsec in the  $g$  band) associated with the giant elliptical NGC 5845 (distance 27 Mpc). Finally, we note the work of Venhola et al. (2017) who used OmegaCAM on VST to search for UDGs in the Fornax cluster (distance = 20 Mpc, virial mass =  $7 \times 10^{13} M_\odot$ ). They found 9 UDG candidates.

Here we report a UDG found in the deep imaging of the NGC 5846 group as part of the VEGAS survey. Mahdavi et al. (2005) noted that the NGC 5846 group is relatively isolated in redshift space and is dominated by two large ellipticals: NGC 5846 ( $V = 1712$  km s<sup>-1</sup>,  $D = 25 \pm 4$  Mpc) and NGC 5813 ( $V = 1956$  km s,  $D = 32 \pm 3$  Mpc). The UDG is much closer in projection (21 arcmin) to NGC 5846 than NGC 5813, however we can't rule out association with the NGC 5813 subgroup. Nevertheless, (Mahdavi et al. 2005) concluded that NGC 5846 and NGC 5813 were at a "compatible distance". Galaxies in the NGC 5846 group have a range of  $900 < cz < 2700$  km s<sup>-1</sup> with a peak around 1900 km s<sup>-1</sup>. Given it is projected near the centre of the NGC 5846 group, we assume it belongs to the main group and have named it NGC 5846\_UDG1, or UDG1 for short. The NGC 5846 group has a halo mass of  $8 \times 10^{13} M_\odot$  (Mahdavi et al. 2005). After briefly describing the VEGAS survey, we present details of UDG1. Throughout this paper we

assume the same distance to the NGC 5846 group as Rong et al. (2017), i.e. 24.89 Mpc from the SBF distance measurement of Tonry et al. (2001).

## 2. VEGAS imaging

The ongoing VEGAS survey<sup>1</sup> is using OmegaCAM on the VST to image 100 bright nearby early-type galaxies in a range of environments. The survey focuses on both compact stellar systems in galaxy halos and the diffuse light within galaxy halos. A data reduction pipeline, called VST-Tube (Grado et al. 2012; Capaccioli et al. 2015), has been developed to create image mosaics that optimise the detection of low surface brightness features. The survey aims to obtain a systematic depth of 27.3 mag per arcsec<sup>2</sup> with a  $S/N > 3$  per arcsec<sup>2</sup> in the  $g$  band. For further details of the survey and examples of depths reached see Capaccioli et al. (2015) and Spavone et al. (2017).

Dithered images of the NGC 5846 group were taken as part of the VEGAS survey on 2015 June 4 under seeing conditions of  $\sim 1$  arcsec. Deep  $g$  band images were taken with a total exposure time of 11 250 s. Shallower  $i$  band images (exposure time of 1650 s) were also obtained but these images are not used for UDG detection as they are too shallow to reveal any UDGs. The multiple  $g$  band images were combined to give a final mosaic image of  $1 \times 1$  sq. deg (with 0.21 arcsec pixels). The final image has a limiting surface brightness of 28.6 mag per arcsec<sup>2</sup> in the  $g$  band (for a  $S/N \sim 3$  per arcsec<sup>2</sup>).

## 3. An ultra diffuse galaxy in the NGC 5846 group

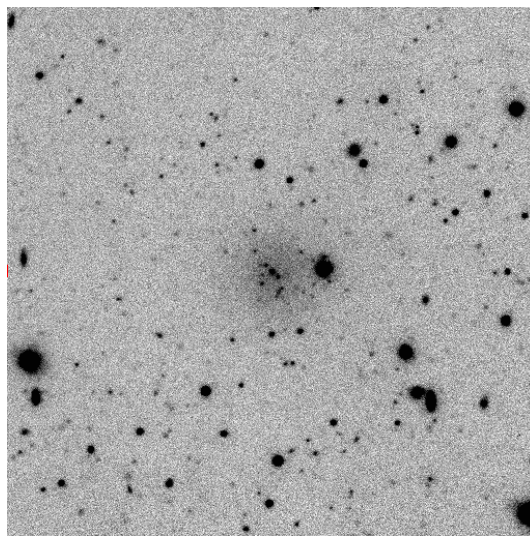
The search for UDGs in the NGC 5846 group was conducted visually. Initially, the full  $16\text{ K} \times 16\text{ K}$  mosaic image was displayed on a high resolution  $4\text{ K} \times 4\text{ K}$  device. The mosaic was then examined in subsections so that individual pixels were resolved. The image was carefully examined visually for low surface brightness, large objects of diameter of tens of pixels (corresponding to several kpc at the distance of the NGC 5846 group). Although we identified several small objects (such as  $dE$ ,  $N$  galaxies) we found only one low surface brightness, large object. An image of this object is shown in Fig. 1.

This object appears to resemble an Ultra Diffuse Galaxy, which we call UDG1. Also apparent in the image are a number of bright, compact objects which are concentrated around the UDG. These are likely to be globular clusters, although one of the brightest may be a nuclear star cluster (the galaxy centre is poorly defined).

In order to measure the properties of UDG1 (and hence confirm its status as a UDG) we used the *ellipse* task within IRAF. This task fits isophotes of constant surface brightness at ever increasing radii. We fixed the centre to the bright star cluster near the galaxy centre. Other star clusters were excluded from the galaxy model using an iterative sigma clipping technique. Our resulting model did not allow measurement of the galaxy ellipticity or position angle due to the low surface brightness. However, the galaxy appears fairly circular with no obvious signs of tidal interaction. We were able to derive a curve-of-growth style total magnitude. Fitting the curve-of-growth beyond 2 arcsec, we measure a total magnitude of  $m_g = 18.0 \pm 0.2$  or  $M_g = -14$ . Correcting for Galactic extinction of  $A_g = 0.16$ , this becomes  $M_g = -14.2$ . From the VEGAS  $i$  band image, we estimate its global  $g - i$  colour to be  $\sim 1$ , i.e. quite red, suggestive of an old stellar population with  $M/L_g \sim 3$  (Into & Portinari 2013). Its

**Table 1.** NGC 5846\_UDG1 properties.

Property	Value
RA (J2000)	15:05:20
Dec (J2000)	01:48:47
$m_g$ (mag)	$18.0 \pm 0.2$
$R_e$ (arcsec)	$17.7 \pm 0.5$
$g - i$ (mag)	$\sim 1$
$\mu_e$ (mag per sq. arcsec)	$26.0 \pm 0.05$
$\mu_0$ (mag per sq. arcsec)	$24.8 \pm 0.1$



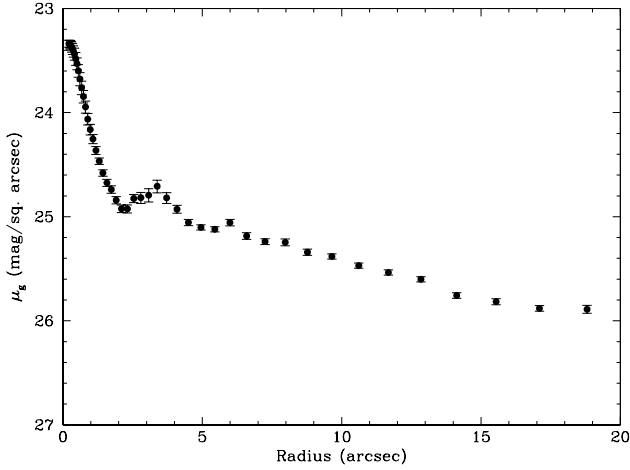
**Fig. 1.** VEGAS image of UDG1. The image shows a  $210 \times 210$  arcsec  $g$  band image cutout of the larger VEGAS image, with north up and east left. UDG1, and its system of globular clusters, can be seen at the centre of the image. The centre of the NGC 5846 group is located to the south-west.

total luminosity corresponds to a stellar mass of  $\sim 10^8 M_\odot$ . The curve-of-growth also allows us to estimate the radius that contains half of the total light in a non-parametric way and we find  $R_e = 12.5 \pm 2$  arcsec ( $1.51 \pm 0.24$  kpc).

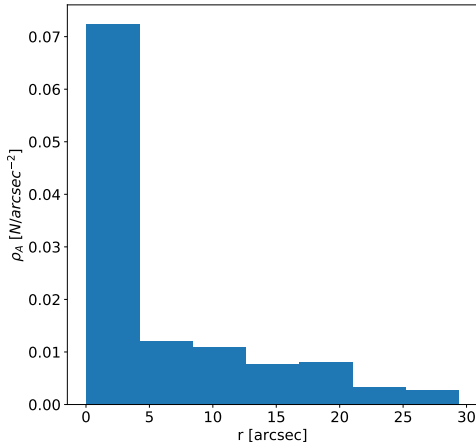
In Fig. 2 we show the surface brightness profile of the galaxy in the  $g$  band. We have fit the profile with a Sersic function, again excluding the central star clusters. We adopt the Sersic fit values of  $n = 0.68$ ,  $R_e = 17.7 \pm 0.5$  arcsec ( $2.14 \pm 0.06$  kpc) and  $\mu_e = 26.0$  mag per sq. arcsec. We note that if UDG1 is associated with NGC 5813 at a distance of 32 Mpc, then its size is closer to 2.7 kpc. If located closer than 17.5 Mpc, the galaxy would no longer be regarded as a UDG (as defined by  $R_e > 1.5$  kpc.) The central surface brightness of the galaxy is difficult to estimate due to the centrally located star cluster which dominates the profile. However extrapolating the outer profile to the inner regions we estimate  $\mu_0 = 24.8$  mag sq. arcsec in the  $g$  band. The size and surface brightness at the effective radius (see Table 1) places the galaxy in the UDG category.

After identifying UDG1 we found it was tabulated in the NGC 5846 group catalogue of Mahdavi et al. (2005) as galaxy NGC 5846-156. They classified it as a “very low surface brightness” galaxy and measured a total magnitude of  $M_R = -14.41$  and  $R_e = 10.5$  arcsec (1.3 kpc at an assumed distance of 24.89 Mpc). This identification occurred before the term ultra diffuse galaxy had been coined and falls below the nominal size limit of 1.5 kpc. It is not clear how they handled the compact

<sup>1</sup> <http://www.na.astro.it/vegass>



**Fig. 2.** Surface brightness profile of UDG1 in the  $g$  band. Error bars show the formal measurement uncertainty. The inner regions are dominated by a bright compact source.



**Fig. 3.** Surface density distribution of globular cluster candidates within a  $50 \times 50$  arcsec box around UDG1. The surface density falls off with radius from the centre of the galaxy indicating that the sources are physically associated with UDG1.

sources around UDG1 when measuring the total magnitude or the size of the galaxy. We note that [Mahdavi et al. \(2005\)](#), in their 10 sq. deg imaging survey, identified another ten sources as very low surface brightness, but all of these sources have much smaller sizes than UDGs and so may be considered as low surface brightness dwarf galaxies (if they are indeed associated with the NGC 5846 group).

We identify 20 compact objects projected near UDG1. We count up the objects within a region of  $50 \times 50$  arcsec centred on the galaxy. This area corresponds to roughly twice the galaxy effective radius, which is typical of the GC systems of UDGs studied to date (see [Forbes 2017](#)). The surface density distribution of these sources within circular annuli about the galaxy centre is shown in [Fig. 3](#). The distribution falls off with radius, which indicates that the sources (globular cluster candidates) are physically associated with UDG1.

Using *gphot* within IRAF, we measure the magnitude of all sources with sizes that are less than two times the seeing (in order to exclude large background galaxies). Given that these compact sources are fairly crowded in the central regions, we measure the magnitude in a small aperture (radius of 4 pixels) with a local background subtraction and apply an aperture correction

**Table 2.** UDG1 globular cluster candidate magnitudes.

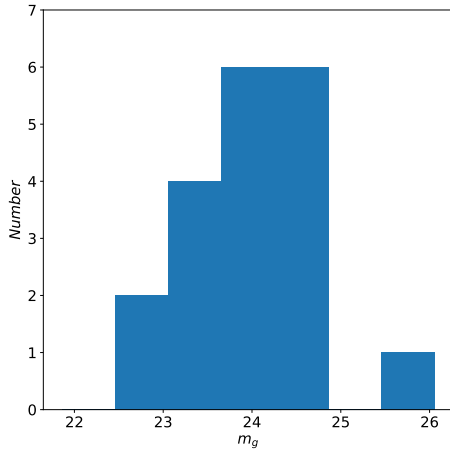
Object	RA (J2000)	Dec (J2000)	$m_g$ (mag)
GC1	15:05:21.5	1:48:54.8	23.96
GC2	15:05:21.0	1:49:02.0	24.85
GC3	15:05:20.8	1:49:03.0	23.28
GC4	15:05:18.9	1:49:06.6	24.31
GC5	15:05:19.5	1:48:54.4	23.72
GC6	15:05:20.6	1:48:41.8	23.38
GC7	15:05:20.5	1:48:45.3	24.44
GC8	15:05:20.4	1:48:49.2	23.58
GC9	15:05:20.3	1:48:46.7	22.49
GC10	15:05:20.1	1:48:44.7	22.89
GC11	15:05:19.6	1:48:39.9	24.81
GC12	15:05:19.5	1:48:38.1	24.46
GC13	15:05:19.2	1:48:41.5	24.23
GC14	15:05:19.9	1:48:34.1	24.79
GC15	15:05:18.9	1:48:39.8	25.51
GC16	15:05:19.6	1:48:23.0	21.77
GC17	15:05:18.8	1:48:42.7	23.69
GC18	15:05:20.0	1:48:39.9	23.64
GC19	15:05:20.1	1:48:38.4	23.69
GC20	15:05:20.2	1:48:36.9	24.07

based on measurements of a dozen isolated objects of similar brightness. The aperture correction to large radius is  $0.63 \pm 0.15$ . This error dominates our photometric uncertainty. The coordinates and total  $g$  band magnitudes for each compact source (i.e. GC candidates) within a  $50 \times 50$  arcsec area are listed in [Table 2](#), including the central star cluster/nucleus GC9.

Three of the objects in [Table 2](#) have SDSS measured magnitudes and colours, i.e. GC16, GC9 and GC19. They have SDSS  $g$  band magnitudes of 21.78, 22.25 and 23.36 respectively. GC16 has a colour of  $g - i = 1.24$ , which is very red for a GC and we suspect it is a foreground star or background galaxy. The other two have  $g - i \sim 0.8$  consistent with a GC. A few of the very brightest sources can just be seen in the shallow VEGAS  $i$  band image of the NGC 5846 group. From those sources we measure typical colours of  $g - i \sim 0.9$ , which are consistent with those of GCs.

In order to estimate the number of contaminants (e.g. background compact galaxies or foreground stars) which may be included in our list of UDG1 GC candidates, we identify several  $50 \times 50$  arcsec regions in the outskirts of the full mosaic image. We estimate  $3 \pm 3$  contaminant objects in our list of candidate GCs. Thus subtracting 3 from our 20 GC candidates, we estimate that 17 are bona fide GCs.

In [Fig. 4](#) we show a histogram of the  $g$  band magnitudes of the detected compact sources within  $50 \times 50$  arcsec around UDG1. The globular cluster luminosity function (GCLF) in non-UDG dwarf galaxies can be well represented by a Gaussian log-normal distribution. For example, [Miller & Lotz \(2007\)](#) found Virgo dEs to have  $M_V = -7.3 \pm 0.1$  with a Gaussian width of  $\sigma = 1.2 \pm 0.1$ . Similar values were found by [Georgiev et al. \(2009\)](#) for local dwarf galaxies of various types. However, the GCLF parameters for UDGs are currently have a wide range of possible values. [Peng & Lim \(2016\)](#) bravely fit a Gaussian to the luminosity distribution of their dozen GCs in the Coma UDG DF17, measuring  $M_V = -7.37 \pm 0.34$  and  $\sigma = 0.76 \pm 0.23$ . [van Dokkum et al. \(2016\)](#) studied the richer GC system of DF44, also in Coma, and



**Fig. 4.** Histogram of  $g$  band magnitudes of compact objects associated with UDG1. A Gaussian GCLF with  $M_V = -7.3$  would peak at  $V = 24.7$  or  $g \sim 25.1$  for an assumed distance of 24.89 Mpc.

showed that Gaussians of  $M_V = -7.5$  and  $\sigma = 1.2$ , and  $M_V = -7.2$  and  $\sigma = 1.0$  provided acceptable fits. In a later paper, van Dokkum (2017) found  $\sigma = 0.82 \pm 0.16$  to be the best fit to the combined GCLF of DF44 and another Coma UDG (DFX1). Given this large range of possible values for the width of the GCLF for UDGs, and the unknown distance to UDG1 (needed to set the absolute magnitude of the GCLF peak), the total number of GCs associated with UDG1 is poorly constrained. Here we prefer to quote the number of GCs detected, corrected for background contamination (i.e. 17), as a lower limit to the total GC system. We note that for an assumed distance of 24.89 Mpc, a Gaussian GCLF with  $M_V = -7.3$  would peak at  $V = 24.7$  or  $g \sim 25.1$  (for  $V = g - 0.35$ ; Capaccioli et al. 2015).

Again assuming  $V = g - 0.35$ , UDG1 has an extinction-corrected  $V$  band magnitude of  $M_V = -14.5$  and the lower limit on its globular cluster specific frequency is  $S/N > 27$ . This is high for a normal dwarf galaxy but not exceptional for a UDG (see Lim et al. 2018; Amorisco et al. 2018). We have included the central star cluster as a GC candidate in the above calculation, however UDG1 may be a nucleated UDG which are quite common in the Coma cluster (Lim et al. 2018).

Burkert & Forbes (2019) have recently extended the GC-halo mass scaling relation to lower masses, i.e.  $\log M_h = 9.68 + 1.01 \log N_{GC}$ , where  $M_h$  is the total halo mass in solar masses and  $N_{GC}$  the number of GCs. Assuming the relation is valid for UDGs, our detection of at least 17 GCs implies  $\log M_h > 10.92$ . This halo mass lies between a dwarf galaxy and an  $L^*$  galaxy like the Milky Way. Future work on NGC 5846\_UDG1 should include attempts to obtain both the stellar velocity dispersion and, if possible, the radial velocities of individual GCs. Both of these measures will give a dynamical mass and hence indicate whether UDG1 resides in a massive dark matter halo as implied by its GC counts.

#### 4. Conclusions

Here we present the discovery of an ultra diffuse galaxy which we assume to belong to the NGC 5846 group. We name this object NGC 5846\_UDG1. This galaxy was also present as the very low surface brightness galaxy NGC 5846–156 in the catalogue of Mahdavi et al. (2005). They measured the magnitude and size of the galaxy but did not discuss the com-

compact star clusters associated with it. At an assumed distance of  $\sim 25$  Mpc for UDG1, we measure an effective radius of 2.1 kpc and a  $g$  band surface brightness at the effective radius of  $\mu_e = 26.0$  mag sq. arcsec placing it in the UDG class. From the halo mass relation of Mancera Piña et al. (2018) up to half a dozen more UDGs may be expected to be found associated with the NGC 5846 group. We find a number of compact sources that have magnitudes and a spatial distribution consistent with being globular clusters associated with UDG1. After statistically correcting for background objects, we place a lower limit on the system to be 17 GCs (one of which may be a central star cluster/nucleus). Our lower limit on the GC system suggests a halo mass in excess of  $8 \times 10^{10} M_\odot$ . This is in stark contrast to the galaxy’s stellar mass of  $\sim 10^8 M_\odot$ . Spectroscopic followup is required to confirm its membership of the NGC 5846 group, measure its internal kinematics and stellar population properties. We expect many more ultra diffuse galaxies to be discovered in the deep and wide VEGAS survey images of massive nearby early-type galaxies.

**Acknowledgements.** We thank the full VEGAS survey team. DF thanks the ARC via DP160101608. We thank the referee for a rapid and useful report. MS acknowledges financial support from the VST project (P.I. P. Schipani). This work is based on visitor mode observations taken at the ESO La Silla Paranal Observatory within the VST Guaranteed Time Observations, Programme ID 095.B-0779(A). NRN acknowledges financial support from the “One hundred talent program of Sun Yat-sen University” and from the European Union Horizon 2020 research and innovation programme under the Marie Skłodowska-Curie grant agreement n. 721463 to the SUNDIAL ITN network.

#### References

- Alabi, A., Ferré-Mateu, A., Romanowsky, A. J., et al. 2018, *MNRAS*, **479**, 3308  
 Amorisco, N. C., Monachesi, A., Agnello, A., & White, S. D. M. 2018, *MNRAS*, **475**, 4235  
 Blakeslee, J. P., & Cantiello, M. 2018, *Res. Notes Am. Astron. Soc.*, **2**, 146  
 Burkert, A., & Forbes, D. 2019, *MNRAS*, submitted [arXiv:1901.00900]  
 Capaccioli, M., Spavone, M., Grado, A., et al. 2015, *A&A*, **581**, A10  
 Forbes, D. A. 2017, *MNRAS*, **472**, L104  
 Georgiev, I. Y., Puzia, T. H., Hilker, M., & Goudfrooij, P. 2009, *MNRAS*, **392**, 879  
 Grado, A., Capaccioli, M., Limatola, L., & Getman, F. 2012, *Mem. Soc. Astron. It. Suppl.*, **19**, 362  
 Greco, J. P., Goulding, A. D., Greene, J. E., et al. 2018, *ApJ*, **866**, 112  
 Into, T., & Portinari, L. 2013, *MNRAS*, **430**, 2715  
 Janssens, S., Abraham, R., Brodie, J., et al. 2017, *ApJ*, **839**, L17  
 Lim, S., Peng, E. W., Côté, P., et al. 2018, *ApJ*, **862**, 82  
 Mahdavi, A., Trentham, N., & Tully, R. B. 2005, *AJ*, **130**, 1502  
 Mancera Piña, P. E., Peletier, R. F., Aguerri, J. A. L., et al. 2018, *MNRAS*, **481**, 4381  
 Martínez-Delgado, D., Läsker, R., Sharina, M., et al. 2016, *AJ*, **151**, 96  
 Merritt, A., van Dokkum, P., Danieli, S., et al. 2016, *ApJ*, **833**, 168  
 Müller, B. W., & Lotz, J. M. 2007, *ApJ*, **670**, 1074  
 Müller, O., Jerjen, H., & Binggeli, B. 2018, *A&A*, **615**, A105  
 Peng, E. W., & Lim, S. 2016, *ApJ*, **822**, L31  
 Román, J., & Trujillo, I. 2017, *MNRAS*, **468**, 703  
 Román, J., Beasley, M. A., Ruiz-Lara, T., & Valls-Gabaud, D. 2019, *MNRAS*, **486**, 823  
 Rong, Y., Guo, Q., Gao, L., et al. 2017, *MNRAS*, **470**, 4231  
 Spavone, M., Capaccioli, M., Napolitano, N. R., et al. 2017, *A&A*, **603**, A38  
 Tonry, J. L., Dressler, A., Blakeslee, J. P., et al. 2001, *ApJ*, **546**, 681  
 Trujillo, I., Roman, J., Filho, M., & Sánchez Almeida, J. 2017, *ApJ*, **836**, 191  
 Trujillo, I., Beasley, M. A., & Borlaff, A. 2019, *MNRAS*, **486**, 1192  
 van Dokkum, P. G., Abraham, R., Merritt, A., et al. 2015, *ApJ*, **798**, L45  
 van Dokkum, P., Abraham, R., Brodie, J., et al. 2016, *ApJ*, **828**, L6  
 van Dokkum, P., Abraham, R., Romanowsky, A. J., et al. 2017, *ApJ*, **844**, L11  
 van Dokkum, P., Danieli, S., Abraham, R., Conroy, C., & Romanowsky, A. J., 2019, *Astrophys. J. Lett.*, **874**, L5  
 Venhola, A., Peletier, R., Laurikainen, E., et al. 2017, *A&A*, **608**, A142  
 Yagi, M., Koda, J., Komiyama, Y., & Yamao, H. 2016, *ApJS*, **225**, 11