



Publication Year	2015
Acceptance in OA @INAF	2020-03-17T16:14:29Z
Title	Spectral variability in Swift and Chandra observations of the ultraluminous source NGC 55 ULX1
Authors	Pintore, Fabio; ESPOSITO, PAOLO; ZAMPIERI, Luca; Motta, Sara; WOLTER, Anna Luisa Maria
DOI	10.1093/mnras/stv028
Handle	http://hdl.handle.net/20.500.12386/23335
Journal	MONTHLY NOTICES OF THE ROYAL ASTRONOMICAL SOCIETY
Number	448

Spectral variability in Swift and Chandra observations of the Ultraluminous source NGC 55 ULX1

Fabio Pintore¹, Paolo Esposito^{2,3}, Luca Zampieri⁴, Sara Motta⁵, Anna Wolter⁶

¹ Dipartimento di Fisica, Università di Cagliari, I-09042 Monserrato, Italy

² Istituto di Astrofisica Spaziale e Fisica Cosmica - Milano, INAF, via E. Bassini 15, I-20133 Milano, Italy

³ Harvard–Smithsonian Center for Astrophysics, 60 Garden Street, Cambridge, MA 02138, USA

⁴ INAF-Osservatorio Astronomico di Padova, Vicolo dell’Osservatorio 5, I-35122 Padova, Italy

⁵ ESAC, European Space Astronomy Centre, Villanueva de la Cañada, E-28692 Madrid, Spain

⁶ INAF, Osservatorio Astronomico di Brera, via Brera 28, 20121 Milano, Italy

Accepted ... Received ...; in original form ...

ABSTRACT

NGC 55 ULX1 is a bright Ultraluminous X-ray source located 1.78 Mpc away. We analysed a sample of 20 *Swift* observations, taken between 2013 April and August, and two *Chandra* observations taken in 2001 September and 2004 June. We found only marginal hints of a limited number of dips in the light curve, previously reported to occur in this source, although the uncertainties due to the low counting statistics of the data are large. The *Chandra* and *Swift* spectra showed clearly spectral variability which resembles those observed in other ULXs. We can account for this spectral variability in terms of changes in both the normalization and intrinsic column density of a two-components model consisting of a blackbody (for the soft component) and a multicolour accretion disc (for the hard component). We discuss the possibility that strong outflows ejected by the disc are in part responsible for such spectral changes.

Key words: accretion, accretion discs – X-rays: binaries – X-rays: galaxies – X-rays: individuals (NGC 55 ULX1, XMMU J001528.9-391319)

1 INTRODUCTION

The population of Ultraluminous X-ray sources (ULXs) has grown significantly after the launch of the *XMM-Newton* and *Chandra* satellites. These observatories made it possible to carry out the detailed spectroscopic study of intrinsically powerful but faint point-like X-ray sources in nearby galaxies (< 100 Mpc). They were dubbed Ultraluminous X-ray sources because they have a very high X-ray luminosity, above 10^{39} erg s⁻¹ (Fabbiano 1989), and exceed (although not necessarily all the time) the Eddington limit for spherical accretion of pure hydrogen onto a $10 M_{\odot}$ black hole (BH). Their position is not coincident with the nucleus of their host galaxy, ruling out a low luminosity Active Galactic Nucleus (AGN). While a significant fraction of ULXs can be associated to background AGNs or young supernovae interacting with the circumstellar matter, the majority of them are now thought to be a peculiar class of accreting sources, either BHs of stellar origin (e.g. King et al. 2001) accreting above Eddington or Intermediate Mass BHs (IMBHs, e.g. Colbert & Mushotzky 1999) accreting sub-Eddington. Because of the special conditions/environment required to form IMBHs (Madau & Rees 2001; Portegies Zwart et al. 2004; van der Marel 2004), the latter scenario is considered a viable one for HLX-1 (Farrell et al. 2009; Servillat et al. 2011), that may however be interpreted also as the nucleus of a stripped dwarf

galaxy (Soria et al. 2011; Webb et al. 2010; Mapelli et al. 2012, 2013), and possibly for a handful of other sources (e.g. Sutton et al. 2012; Pasham et al. 2014). On the other hand, for the great majority of ULXs an interpretation in terms of a stellar mass BH or a BH of stellar origin seems more likely (see e.g. Zampieri & Roberts 2009; Feng & Soria 2011). Recent dynamical measurements or constraints to the BH mass have been derived and are in agreement with this conclusion (Liu et al. 2013; Motch et al. 2014). In addition, the observed X-ray spectral and variability properties are consistent in most cases with an interpretation in terms of super-Eddington accretion and possibly beamed emission (e.g. Gladstone et al. 2009; Sutton et al. 2013), as expected for light BHs, with the actual BH mass (5-80 M_{\odot}) depending somewhat on the metallicity of the environment (e.g. Zampieri & Roberts 2009; Mapelli et al. 2009; Belczynski et al. 2010). Finally, it was very recently shown that some transient ULXs may even host Neutron Stars (Bachetti et al. 2014).

One of the main diagnostics to study ULXs is the X-ray spectrum. High quality ULX spectra are usually characterised by a soft component, well fit by a standard disc spectrum, and an additional high energy component with a turn-over at 3-5 keV, phenomenologically described in terms of Comptonization in an optically thick medium (Stobbart et al. 2006; Gladstone et al. 2009;

Pintore & Zampieri 2012). Although this two-components model is only a phenomenological description, the peculiar properties of the ULX spectra has led to the conclusion that these sources are in a markedly different accretion regime from those observed in Galactic BH X-ray binary systems (XRBS) accreting at sub-Eddington rates (Gladstone et al. 2009; Kajava & Poutanen 2009). The combination of spectral shape, spectral evolution and variability suggest that the mass accretion rate in the disc is at or above the Eddington limit (e.g. Middleton et al. 2011; Sutton et al. 2013; Bachetti et al. 2013; Walton et al. 2013; Pintore et al. 2014). Under such conditions, strong, radiatively driven winds can originate from the inner regions of the disc and propagate outwards above its plane (e.g. Poutanen et al. 2007; Ohsuga & Mineshige 2007; Ohsuga et al. 2009). These turbulent and optically thick winds may originate the soft spectral component observed at low energies and possibly also the extrinsic variability detected at higher energies (e.g. Middleton et al. 2011), while an advection-dominated disc, the emission of which may be comptonized, produces the high energy part of the spectrum (e.g. Middleton et al. 2011, 2012; Sutton et al. 2013; Walton et al. 2013; Pintore et al. 2014). The structure and emission properties of the inner disc may be affected also by BH spin and radiative transfer effects taking place in the disc atmosphere (e.g. Suleimanov et al. 2002; Kawaguchi 2003). This picture has been confirmed by observations above 10 keV recently performed by *NuSTAR* (Bachetti et al. 2013; Rana et al. 2014; Walton et al. 2013, 2014). Clearly, the onset of strong outflows would play an important role in modifying the structure of the accretion disc as they are expected to effectively remove energy and angular momentum from the system.

In this work, we present the results of a *Swift* monitoring campaign of the source NGC 55 ULX1, located in a Magellanic barred spiral galaxy at a distance of 1.78 Mpc (Karachentsev et al. 2003) and with X-ray luminosity in the range $8 \times 10^{38} - 2 \times 10^{39}$ erg s⁻¹. This low-luminosity ULX is peculiar because in two *XMM-Newton* observations it showed energy-dependent dips, not commonly observed in ULXs (see also Grisé et al. 2013 and Lin et al. 2013 for possible dips in NGC 5408 X-1 and 2XMM J125048.6+410743, respectively). The dips lasted for a few hundreds of seconds (Stobbart et al. 2004) and appeared to be correlated with time variability at high energy. A later *XMM-Newton* observation caught the source in a low flux state where dips were not present and the spectral properties were different (Pintore et al. in prep.). The dips and the associated variability at high energy may be related to turbulences or blobs of optically thick matter in the wind that occasionally encounter our line of sight and mask the emitting inner regions (Middleton, Heil, Pintore, Walton and Roberts, submitted). The study of this source appears then crucial to assess both the spectral variability and the onset of powerful outflows in ULXs. This fact, along with the goal of investigating the source long-term flux variability, motivated our request for a *Swift* monitoring campaign. Besides the *Swift* observations, we analyzed and present here also two previously unpublished *Chandra* observations.

The paper is structured as follows: in Section 2 we summarize the data selection and reduction procedures, in Section 3 we present the results of our timing and spectral analysis of NGC 55 ULX1, and in Section 4 we discuss them.

Table 1. Summary of the *Chandra* and *SWIFT* observations of NGC 55 ULX1.

<i>Chandra</i> Obs. ID	Start time (Terrestrial Time)	Stop time	Exp. (ks)	Net counts
2255 (Chip I0)	2001-09-11 06:25:05	2001-09-11 23:30:20	59.4	9509
4744 (Chip I1)	2004-06-29 01:48:01	2004-06-29 05:17:04	9.6	3719
<hr/>				
<i>Swift</i> Obs. ID				
00032619001	2013-04-10 03:24:17	2013-04-10 09:50:56	4.8	301 ±17
00032619002	2013-04-17 11:22:00	2013-04-17 16:30:56	5.2	299 ±18
00032619003	2013-04-24 13:35:09	2013-04-24 23:19:54	4.8	178 ±14
00032619004	2013-05-01 00:48:38	2013-05-01 05:54:54	5.0	191 ±14
00032619005	2013-05-08 05:45:04	2013-05-08 23:54:57	4.9	258 ±16
00032619006	2013-05-15 18:48:28	2013-05-15 22:27:55	4.1	167 ±13
00032619007	2013-05-22 15:47:03	2013-05-22 22:49:55	5.6	182 ±14
00032619008	2013-05-29 19:32:23	2013-05-29 19:39:54	4.4	160 ±10
00032619009	2013-06-02 11:33:13	2013-06-02 15:04:55	4.5	360 ±19
00032619010	2013-06-05 00:18:17	2013-06-05 05:26:57	4.6	483 ±22
00032619011	2013-06-12 18:28:52	2013-06-12 23:25:56	3.4	168 ±13
00032619012	2013-06-19 18:28:08	2013-06-19 23:35:55	5.4	200 ±14
00032619013	2013-06-27 20:17:08	2013-06-27 23:54:56	4.9	170 ±13
00032619014	2013-07-03 00:03:17	2013-07-03 22:18:55	4.9	165 ±13
00032619015	2013-07-10 09:26:47	2013-07-10 14:40:55	5.2	327 ±18
00032619016	2013-07-17 11:14:55	2013-07-17 21:16:54	4.7	299 ±17
00032619017	2013-07-24 11:46:07	2013-07-24 20:00:55	4.7	166 ±13
00032619018	2013-07-31 06:55:12	2013-07-31 18:35:55	5.0	241 ±16
00032619019	2013-08-07 00:48:43	2013-08-07 22:04:55	4.3	192 ±14
00032619020	2013-08-14 15:33:40	2013-08-14 19:12:55	4.6	207 ±15

The source coordinates (J2000) are R.A. = 00^h15^m28^s.90 and Decl. = -39°13′19″.0 (Stobbart et al. 2006); the Galactic column density along its direction is $N_{\text{HGal}} = 1.37 \times 10^{20}$ cm⁻² (Kalberla et al. 2005).

2 DATA REDUCTION

2.1 *Chandra* observations

We analysed the only two archival *Chandra* observations of NGC 55 ULX1 (see Table 1), taken in 2001 September and 2004 June with the Advanced CCD Imaging Spectrometer Imaging array (ACIS-I; Garmire et al. 2003). The CCDs were operated in Timed Exposure mode and in full frame (readout time: 3.2 s), and the Faint telemetry mode was used. The data were reprocessed with the *Chandra* Interactive Analysis of Observations software package (CIAO, version 4.6; Fruscione et al. 2006) and the calibration files in the CALDB release 4.5.9.

Despite the source NGC 55 ULX1 was not at the aimpoint (4′ and 7′ off-axis in the first and second observation, respectively), in both observations the count rate was high enough to make pile-up effects in the ACIS detector not negligible. A ‘pile-up map’ created with the CIAO tool PILEUP_MAP confirmed the presence of pile-up. Owing to the sharp *Chandra* point-spread function (PSF), correcting for pile-up discarding the data in the core of the PSF would result in a strong loss of counts. Therefore we used instead the PILE-UP model by Davis (2001) (see section 3). The *Chandra* spectra should be treated carefully: since the pile-up strongly depends on count rate, the pile-up fraction was ~ 20% in the first observation and ~ 40% in the second. We considered the pile-up level of the latter observation too high. The spectral modifications may be large enough that also the convolution model by Davis (2001) may not correctly describe them, making the spectral parameters not reliable. Therefore we splitted the second observation in two parts with the same duration and we spectrally re-analyzed the second part, when the source count rate was lower and pile-up was mitigated. The count rate was 0.34 cts s⁻¹ and the pile-up grade

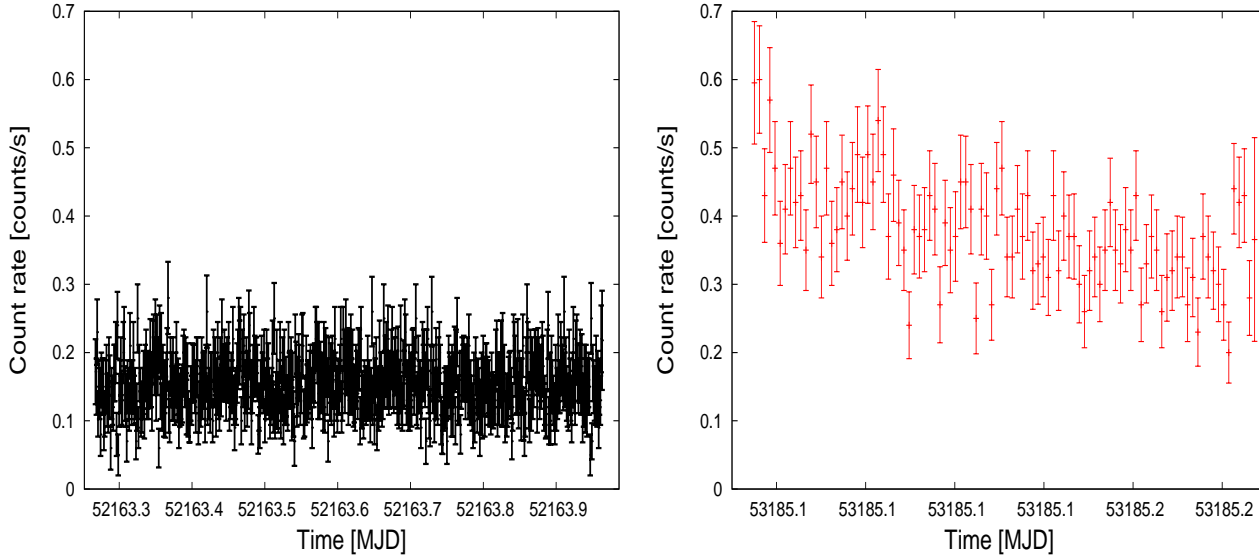


Figure 1. Light curve of the two Chandra observations (Obs.ID. 2255 and 4744 at the left and right, respectively) in the 0.3–10 keV energy band, sampled with a bin size of 100s.

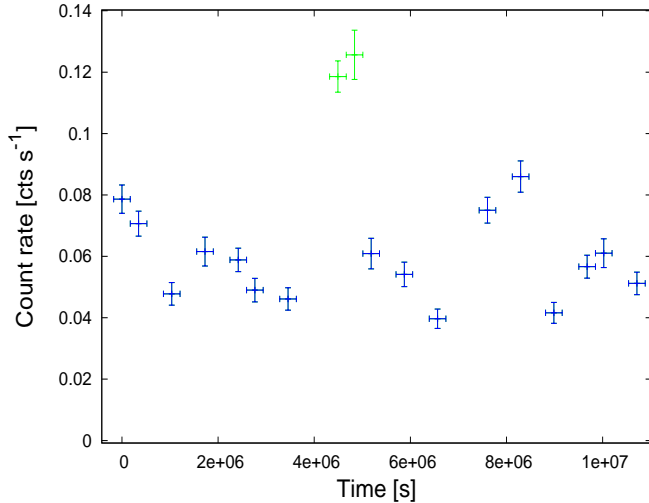


Figure 2. *Swift* light curve from the whole data set, with bin size of 4 days. We show the observations stacked in the *Swift* “group 1” and “group 2” spectra (see text) with *blue* and *green* colours, respectively.

migration (α) decreased to $\sim 0.1 - 0.2$, although these values are poorly constrained (see Table 2).

In observation 2255, the source counts were extracted from an elliptical region with semi-axes of $5''$ and $3''$, while the background was estimated from an annulus with radii $8''$ and $15''$. In observation 4744, the semi-axes of the elliptical source region were $6''$ and $9''$, and the radii of the background annulus $15''$ and $25''$. Background regions were selected close to the source and we verified that the selected CCD regions were free of emitting X-ray sources.

2.2 *Swift* observations

We monitored NGC 55 ULX1 between 2013 April and August using the X-Ray Telescope (XRT; Burrows et al. 2005) on-board

Swift. We collected approximately one 5-ks long observation per week in ‘Photon Counting’ mode (PC, the XRT full imaging mode, which has a readout time of 2.507 s; see Hill et al. 2004).

The XRT data were processed with XRTPipeline (in the HEASOFT software package version 6.14), filtered and screened with standard criteria. The source counts were extracted within a 20-pixel radius ($\sim 47''$; one XRT pixel corresponds to ~ 2.36 arcsec¹), while the background was estimated from an annulus with internal (external) radius of 60 (100) pixels, i.e. $\sim 141''$ ($236''$). We verified that the background regions were in a CCD region free of other X-ray sources. For the spectroscopy, we used the standard CALDB spectral redistribution matrices, while the ancillary response files were generated with XRTMKARF, which accounts for different extraction regions, vignetting and point spread function corrections.

The lightcurves were corrected using the XRTLCCORR tool, which takes into account Point Spread Function (PSF) corrections, vignetting and photon losses due to bad pixels/columns inside the extraction region. The latter corrections are based on a raw instrument map, constituted by a number of extensions corresponding to different time intervals, and its spatial dimension is arranged to cover the extraction region.

The statistics of each individual *Swift* observation is poor and did not allow us to well constrain the spectral properties of NGC 55 ULX1 adopting the models described in the next sections. However, the hardness ratio (1.5-10 keV/0.3-1.5 keV) did not provide indications of statistically significant spectral variability between observations. Therefore, in order to improve the Signal-to-Noise ratio, we stacked all *Swift* observations according to their flux. We obtain two spectra (labeled as *Swift* “group 1” and “group 2”) comprising 18 low flux and 2 high flux (Obs. Id. 9009 and 9010) observations, respectively (see the lightcurve in Figure 1).

¹ http://swift.gsfc.nasa.gov/analysis/xrt_swguide_v1.2.pdf

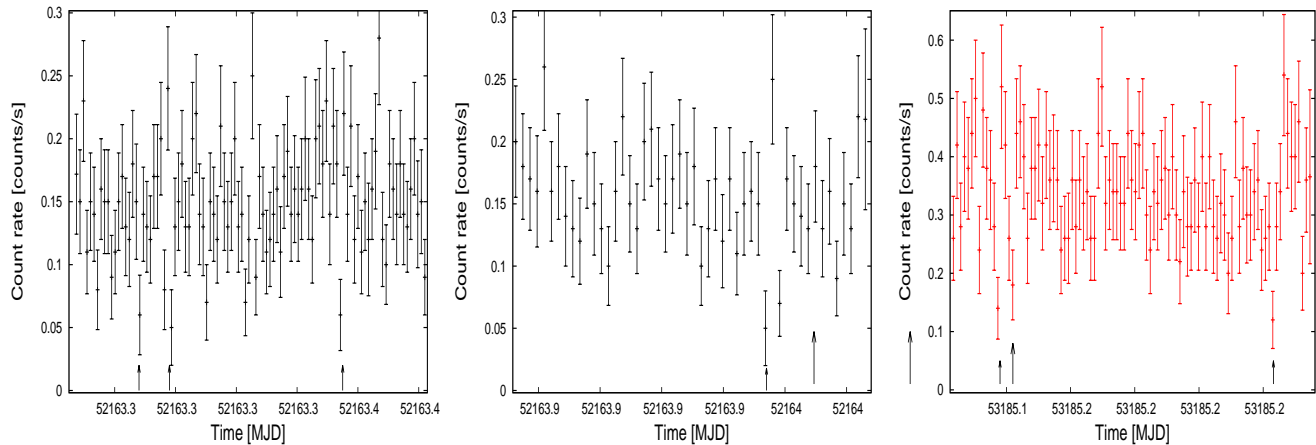


Figure 3. A zoom of the light curve, in the 0.3–10 keV energy band, sampled with a bin size of 100 seconds in the first (*left, center*) and 50 seconds in the second (*right*) *Chandra* observation. There may be marginal hints of dips at the times marked with black arrows.

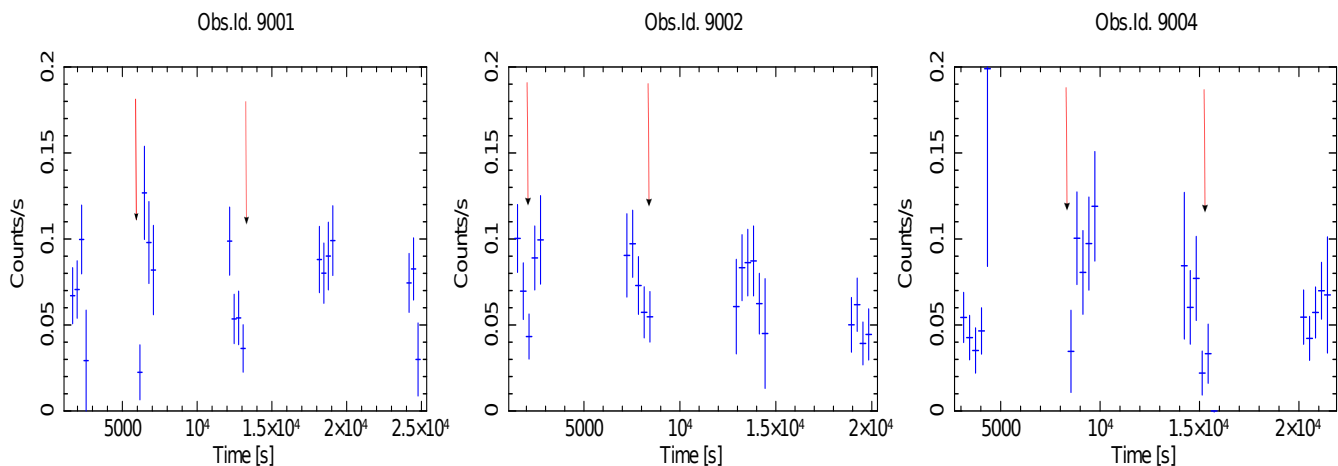


Figure 4. An example of three *Swift* observations in which marginal hints of dip episodes are seen (indicated by red arrows). The bin time of the lightcurves (in 0.3–10 keV energy band) is 300 seconds.

3 DATA ANALYSIS

3.1 Timing analysis

A peculiar property of NGC 55 ULX1 is the existence of narrow dips in its *XMM-Newton* lightcurves. Stobbart et al. (2004) showed that, on average, the dips last about 100–300s (although a few dips appeared to be longer), with a depth at the level of $\sim 80 - 90\%$ of the persistent flux ($\sim 2.5 \times 10^{-12} \text{ erg cm}^{-2} \text{ s}^{-1}$) and more intense in the 2.0–4.5 keV energy band. We note that the average observed flux of NGC 55 ULX1 in the *Chandra* and *Swift* observations is $\sim 1.5 \times 10^{-12} \text{ erg cm}^{-2} \text{ s}^{-1}$, therefore lower than in the *XMM-Newton* data. If dips are characteristic of a specific high flux state of the source, we might not be able to detect any dip in the *Chandra* and *Swift* datasets. However, we can suppose that they are a random effect and present at different flux levels. In the *XMM-Newton* observations, we counted around 30 dips in a total exposure time of 51.9 ks. As they represent a small fraction of the total *XMM-Newton* exposure time, we calculated the expected number of dips detections N_{dips} in the *Chandra* and *Swift* observations according to the relation: $N_{dips} = (N_{XMM}/t_{XMM}) \times t_{exp}$, where N_{XMM} is the total number of dips in the *XMM-Newton* observations, t_{XMM}

is the total *XMM-Newton* exposure time and t_{exp} is the *Chandra* or *Swift* exposure time. We therefore expected to detect ~ 34 dips in the first *Chandra* observation (59.4 ks), ~ 5 dips in the second *Chandra* observation (9.6 ks), 2–3 dips in any single *Swift* snapshot (~ 4.5 ks) or ~ 55 dips during the total *Swift* exposure time (95 ks).

The *Chandra* observations showed an increase in the count rate of about a factor of 2–3 between the two epochs (Fig. 1), and an average count rate in the 0.3–10 keV energy band of $\sim 0.15 \text{ cts s}^{-1}$ and $\sim 0.4 \text{ cts s}^{-1}$ for the first and second observation, respectively. Assuming to observe occultations similar to those of the *XMM-Newton* observations (depth at the level of $\sim 80 - 90\%$ of the persistent flux), we should detect dips at ~ 0.03 and $\sim 0.1 \text{ cts s}^{-1}$ in the first and second *Chandra* observation, respectively. We sampled the 0.3–10 keV lightcurve of the first *Chandra* observation with 100s time bins as it assured the minimum binning to obtain Gaussian statistics in each time bin. We found only marginal indications of a limited number of dips, although the uncertainties due to the poor quality of the data are large ($\sim 40\%$ at the lowest rates; see some examples in Figure 3– *left, center*). The lightcurve of the second *Chandra* observation was instead sampled with 50s,

as it assured the minimum binning to obtain Gaussian statistics in each time bin. However, also in this case, we found only marginal evidence of dips ($\sim 60\%$ error bars; see Figure 3-right).

The *Swift* observations generally showed variability of less than a factor of 2 (except for two high flux observations, that reached $\sim 2.4 \times 10^{-12}$ erg cm $^{-2}$ s $^{-1}$; Fig. 2). Assuming a persistent mean rate between ~ 0.06 and ~ 0.1 cts s $^{-1}$, we expected the depth of the dips to be at $\sim 0.01 - 0.02$ cts s $^{-1}$, with a corresponding error bar of $\sim 60-80\%$. The relatively low count rate detected by *Swift* did not allow us to investigate the existence of dips on timescales lower than 300s, as it represents the best compromise to reach gaussian statistics in almost each time bin and have small enough error bars. However, this implies that only the longest dips could be detected in these datasets. None of such deep dips at $\sim 0.02 - 0.01$ cts s $^{-1}$ was reliably detected, although we found possible hints in the lightcurve of a few observations where short drops in the count rate were observed (some examples are given in Fig. 4).

Dipping episodes in Galactic accreting sources are usually characterised by a spectral variability which can be clearly revealed by inspection of the hardness ratios. However, the large error bars of the hardness ratios in our *Swift* and *Chandra* observations do not allow us to clearly detect them and further investigate their properties. Finally, we checked also the existence of dips in the 2.0–4.5 keV energy band (the same band in which Stobbart et al. 2004 found the strongest evidence) in both the *Chandra* and *Swift* observations, but the statistics was too poor.

3.2 Spectral analysis

We analysed all the *Chandra* and *Swift* spectra obtained as described in Section 2 using XSPEC v. 12.6.0 (Arnaud 1996) and grouping them to obtain at least 20 counts per bin. Two absorption components (TBABS in XSPEC) were considered in all spectral fits: the first was introduced to model the Galactic absorption along the direction of the source and fixed at 1.37×10^{20} cm $^{-2}$ (Kalberla et al. 2005). The second was allowed to vary and describes the absorption in the local environment of the source. The luminosities were estimated from the flux calculated from the CFLUX convolution model in XSPEC, assuming a distance of 1.78 Mpc (Karachentsev et al. 2003).

From the analysis of the *XMM-Newton* data (Gladstone et al. 2009; Sutton et al. 2013), NGC 55 ULX1 showed a complex continuum that can be described by a two-components model, consisting of a multicolour blackbody disc and a Comptonization component with a roll-over at high energy. However, this model was difficult to apply to the *Chandra* and the stacked *Swift* spectra because the data quality was poorer and did not allow us to constrain the spectral parameters. We then fitted the soft component with a single blackbody model (BBODY in XSPEC), neglecting that the emission of the outer disc/wind may come from layers with different ionisation and temperature. For similar reasons, the broad high energy spectrum, often described in terms of a Comptonization component (e.g Stobbart et al. 2006; Gladstone et al. 2009; Sutton et al. 2013; Pintore et al. 2014), was approximated with a multicolour blackbody disc (DISKBB in XSPEC). Thus, for both the *Chandra* and stacked *Swift* spectra we adopted, as common reference model, a DISKBB (Mitsuda et al. 1984) component plus an additional BBODY component (when needed).

3.3 Swift spectra

The “Group 2” spectrum does not need an additional BBODY component, as a single disc component, with a temperature of 0.6 keV provides a good fit to the data (see Table 2). We note also that a DISKBB model is marginally favoured in comparison with a single POWERLAW component ($\chi^2/\text{dof}=44.39/34$). Because of the disc-like spectral shape, we tried to fit the “Group 2” spectrum also with a modified disc model (DISKPBB, Mineshige et al. 1994), in which the radial dependence of the temperature goes as $T_{\text{disc}} \propto r^{-p}$, and p is 0.75 for a standard disc and 0.5 for a slim disc. This model provided a good fit but its parameters turned out to be totally unconstrained.

The best fit of the “Group 1” spectrum was instead obtained with a two-components model, a blackbody with a temperature of 0.13 keV and a high energy DISKBB component with a temperature of 0.56 keV (see Table 2). As the mean flux estimated from the “Group 2” spectrum was about a factor of 4 lower than that of the “Group 1” *Swift* spectrum, we tested the possibility that the soft blackbody component might not be detected in the “Group 2” spectrum because of the poor counting statistics. We then added to the DISKBB component a BBODY model with fixed spectral parameters, equal to those found in the “group 1” spectrum (see below) and letting the column density, the DISKBB temperature and normalization free to vary. We found that the additional component was acceptable and led only to a change in column density which grew from 0.13 atoms cm $^{-2}$ to 0.49 atoms cm $^{-2}$ (Table 2).

Comparing the spectral parameters of the two *Swift* spectra, we find that, while the total absorbed 0.3–10 keV luminosity increased (from $5 - 9 \times 10^{38}$ erg s $^{-1}$ to 1×10^{39} erg s $^{-1}$) with the mean count rate of the stacked spectra, the unabsorbed luminosity did the opposite. The intrinsic source luminosity (i.e. unabsorbed) was about a factor of 4 higher in the “group 1” spectrum than in the “group 2” spectrum ($\sim 4 \times 10^{39}$ erg s $^{-1}$ vs $\sim 1 - 3 \times 10^{39}$ erg s $^{-1}$). This may be explained in terms of the higher column density (N_{H}) of the “group 1” spectrum ($\sim 0.6 \times 10^{22}$ cm $^{-2}$), about a factor of 6 higher than in the “group 2” spectrum ($\sim 0.1 \times 10^{22}$ atoms cm $^{-2}$). However, comparing with the alternative two-components fit of the “group 2” spectrum, the luminosity of the “Group 1” spectrum is only a factor 1.5 higher and the column density only 20% larger.

3.4 Chandra spectra

The parameters of the DISKBB and BBODY components of the first observation are $kT_{\text{bb}} \sim 0.18$ keV and $kT_{\text{disc}} \sim 0.64$ keV, slightly higher than those of the *Swift* spectra (but consistent with them within the errors). The spectral parameters of the second observation are less constrained. The column density is consistent with 0 within the errors, while the temperatures of the BBODY and DISKBB components (~ 0.15 and ~ 0.6 keV) are comparable to those of the first observation. We note that the intrinsic (i.e. unabsorbed) luminosity of the second *Chandra* observation is clearly the highest of the sample, an order of magnitude higher than the intrinsic luminosity of the “group 2” *Swift* spectrum.

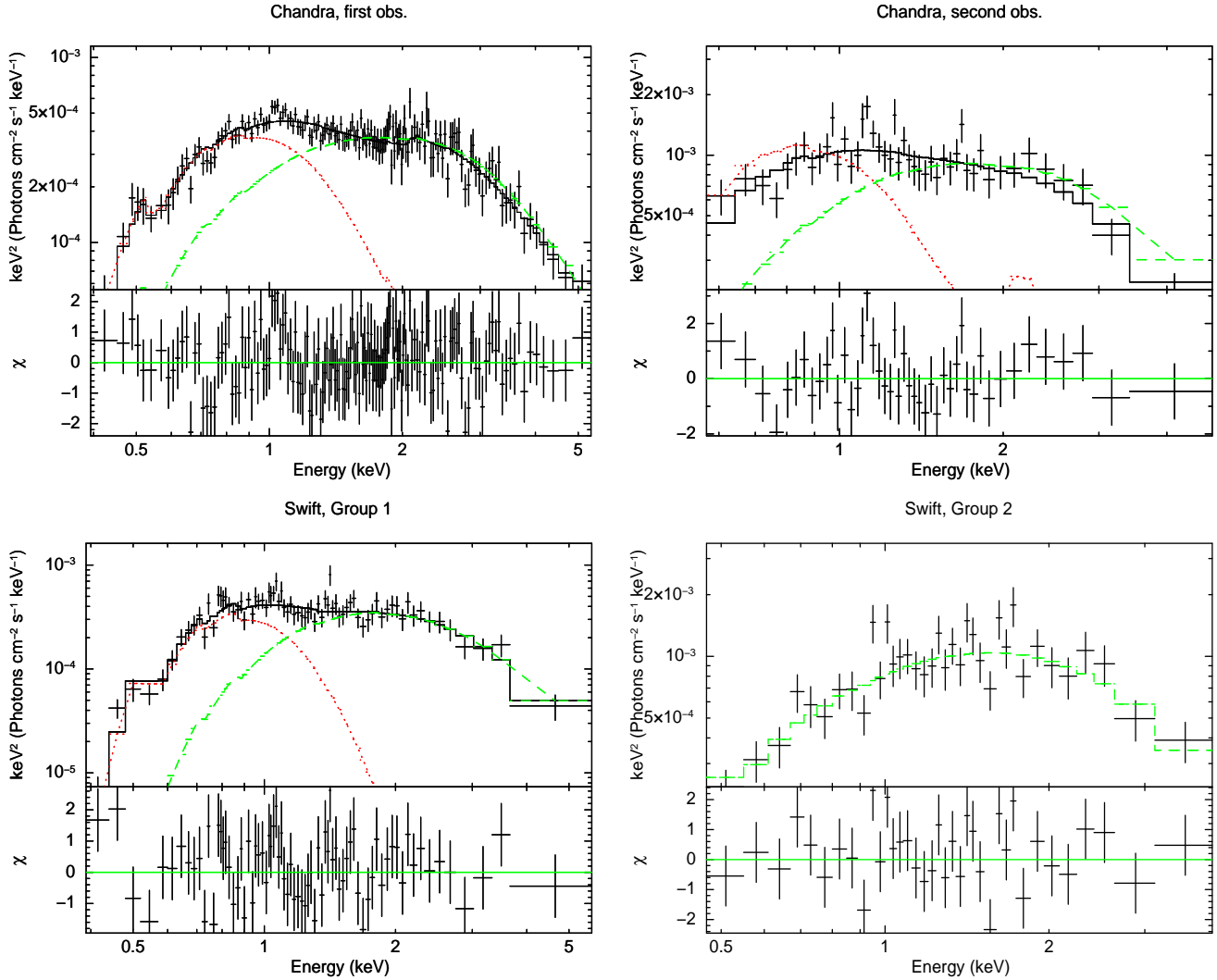
There is some hint of spectral variability between the *Swift* and *Chandra* observations, although most of it is accounted for by variations in column density (spanning the range between $\sim 1.5 \times 10^{21}$ atoms cm $^{-2}$ and 6×10^{21} atoms cm $^{-2}$) and nor-

Table 2. Best fitting spectral parameters of NGC 55 ULX-1 obtained with an absorbed BBODY+DISKBB model. The error bars refer to the 90% confidence level.

	N_{H}^a 10^{22} atoms cm^{-2}	kT_{bb}^b keV	kT_{disc}^c keV	$f_{\text{obs}} [0.3-10 \text{ keV}]^d$ 10^{-12} erg cm^{-2} s^{-1}	$L_X [0.3-10 \text{ keV}]^e$ 10^{39} erg s^{-1}	$L_{\text{diskbb}} [0.3-10 \text{ keV}]^f$ 10^{39} erg s^{-1}	χ^2/dof	α^g	f^h %
<i>Chandra</i> (Obs.ID. 02255)	$0.24^{+0.09}_{-0.08}$	$0.18^{+0.03}_{-0.02}$	$0.64^{+0.05}_{-0.02}$	$1.10^{+0.10}_{-0.10}$	$1.3^{+0.10}_{-0.20}$	$0.6^{+0.1}_{-0.1}$	141.44/149	$0.20^{+0.10}_{-0.10}$	0.85
<i>Chandra</i> (Obs.ID. 04744)*	$0.30^{+0.40}_{-0.30}$	$0.15^{+0.05}_{-0.03}$	$0.61^{+0.08}_{-0.10}$	$1.70^{+0.13}_{-0.20}$	$14.0^{+3.0}_{-2.0}$	$7.0^{+3.0}_{-1.0}$	46.19/40	$0.13^{+0.23}_{-0.13}$	0.85
<i>Swift</i> , "Group 1"	$0.60^{+0.10}_{-0.10}$	$0.13^{+0.02}_{-0.02}$	$0.56^{+0.04}_{-0.04}$	$1.11^{+0.03}_{-0.03}$	$3.8^{+1.30}_{-0.40}$	$3.0^{+2.0}_{-1.0}$	148.90/124	—	—
<i>Swift</i> , "Group 2"	$0.13^{+0.07}_{-0.06}$	—	$0.60^{+0.06}_{-0.06}$	$1.50^{+0.20}_{-0.20}$	$1.1^{+0.20}_{-0.10}$	$1.1^{+0.2}_{-0.1}$	39.45/34	—	—
	$0.49^{+0.05}_{-0.04}$	$0.13(f)^{**}$	$0.59^{+0.06}_{-0.06}$	$2.40^{+0.10}_{-0.20}$	$2.8^{+0.20}_{-0.20}$	$1.3^{+0.2}_{-0.1}$	41.42/34	—	—

^a Intrinsic column density of the neutral absorber; ^b Temperature of the blackbody component; ^c Inner disc temperature; ^d Observed flux in the 0.3–10 keV energy range; ^e Unabsorbed luminosity in the 0.3–10 keV energy range, assuming a distance of 1.78 Mpc; ^f Unabsorbed disc luminosity in the 0.3–10 keV energy range, assuming a distance of 1.78 Mpc; ^{g,h} Parameters of the JDPLEUP pile-up model as implemented in XSPEC: α is the grade-migration parameter (the probability that n events will be piled together but will still be retained after data filtering is α^{n-1}); f is the fraction of the PSF treated for pile-up and is required to be in the range 85–100%;

* This observation has been split in two parts because of high pile-up; here we consider only the second part, where pile-up is lower. ** Alternative fit where the parameters of the BBODY component are fixed to those found in the "group 1" *Swift* spectrum.

**Figure 5.** *Top:* unfolded spectra ($E^2 f(E)$) of the first (*top-left*) and second (*top-right*) *Chandra* observations; *bottom:* unfolded spectra ($E^2 f(E)$) of the stacked "group 1" (*left*) and "group 2" (*right*) *Swift* observations. The continuum is described by an absorbed blackbody (BBODY, dotted, red line) plus a multicolour disc (DISKBB, dashed, green line) or a simple DISKBB (see text).

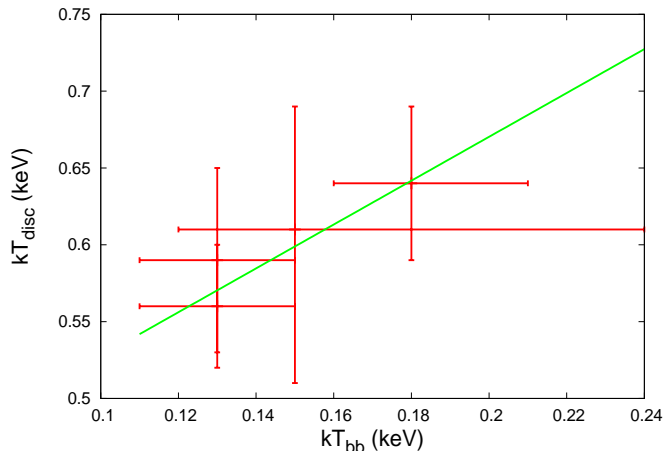


Figure 6. Tentative linear correlation between the blackbody and disc temperature (taking into account the alternative fit of the “group 2” spectrum).

malization of the spectral components. Using the alternative two-components fit of the “group 2” spectrum, we find marginal evidence of a linear correlation between the temperatures of the blackbody and disc components ($kT_{disc} = (1.4 \pm 0.4) kT_{bb} + (0.38 \pm 0.06)$; see Fig. 6), with a regression coefficient of 0.92 and a Spearman coefficient of 0.8. This may suggest that the evolution of the two components is coupled, although it is not clear how it relates to changes in the mass accretion rate.

Finally, in both the *Swift* and *Chandra* spectra, there is some indication (not statistically significant, though) of an excess at ~ 1 keV in the residuals, that may be associated to an emission feature. Other ULXs showed a similar puzzling feature in their spectra, that has been interpreted as emission from a plasma close to the source (i.e. Strohmayer et al. 2007; Middleton et al. 2011; Caballero-Garcia et al. 2013; Sutton et al. 2013; Pintore et al. 2014) or mismodeling of absorption features (Middleton et al. 2014a).

4 DISCUSSION AND CONCLUSIONS

We analysed two *Chandra* ACIS-I observations and 20 *Swift* observations, taken in PC mode, of the Ultraluminous X-ray source NGC 55 ULX1. We investigated the spectral variability of the source, stacking the *Swift* observations in two spectra according to the observed count rate, with the aim to improve the signal-to-noise ratio. For both the stacked *Swift* spectra and the *Chandra* spectra we adopted a model consisting of a blackbody (for the soft component) and a multicolour accretion disc (for the hard component). The *Chandra* and *Swift* spectra showed spectral variability similar to that observed in other ULXs (e.g. Kajava & Poutanen 2009; Feng & Kaaret 2009; Sutton et al. 2013; Pintore et al. 2014). We can account for this spectral variability mostly in terms of changes in both normalization and column density of the two model components.

Despite detailed timing information are missing, as many other ULXs, NGC 55 ULX1 escapes an interpretation in terms of transitions between canonical sub-Eddington states as those observed in accreting Galactic BH X-ray binaries (e.g. McClintock & Remillard 2006). Although different scenarios have been proposed (e.g. Miller et al. 2014), many of the observed

properties can be qualitatively accounted for by the expected behaviour of an accretion disc accreting above Eddington (e.g. Gladstone et al. 2009; Zampieri & Roberts 2009; Middleton et al. 2012; Sutton et al. 2013; Pintore et al. 2014). In such conditions, advection of energy takes place in the accretion disc, the structure of which is modified with respect to that of a standard disc (Abramowicz et al. 1988; Watarai et al. 2001; Ohsuga & Mineshige 2011). In addition, part of the accretion energy is removed in forms of radiative outflows that originate in the inner regions of the disc (e.g. Poutanen et al. 2007; Ohsuga et al. 2009). Their opening angle (measured from the rotation axis of the disc) decreases when the accretion rate increases (e.g. Takeuchi et al. 2014). The density of these outflows is sufficiently high that they are optically thick and produce thermal emission. The characteristic temperature of the photosphere in such winds is consistent with that of the soft component often detected in ULX spectra. If the angle between our line of sight and the rotation axis of the accretion disc is sufficiently large, short term variability (Heil et al. 2009) can be induced by optically thick clouds of matter that intersect the edge of the winds (Middleton et al. 2011; Sutton et al. 2013). In case the wind is sufficiently dense and extended, its outer neutral phase can also partially obscure the high energy emission from the inner disc and its own soft emission, leading to an increase in the local absorption and column density (e.g. Pintore et al. 2014). Narrow absorption lines from this warm phase of the wind are still not yet convincingly detected (Walton et al. 2012), although broad, blue-shifted X-ray emission features of ionised species of abundant elements may be expected (Middleton et al. 2014a). In the following, we then interpret the observed spectral evolution of NGC 55 ULX1 as induced by variations in accretion rate, outflow rate and intrinsic absorption assuming that the source is in a super-Eddington accretion state of this type and that the inclination angle to the source is large.

We then start from the second *Chandra* observation, the intrinsic luminosity of which reaches 10^{40} erg s^{-1} (Table 2), a value higher than that of any *XMM-Newton* observation. Both the soft and hard emission are stronger than in any previous observation. We then suggest that, at the time of this observation, the accretion rate is the highest, and that the outflow is extremely powerful with a very extended photosphere. In the first *Chandra* observation the spectrum shows still evidence of a powerful soft component, but with a total intrinsic X-ray luminosity of $\sim 1.3 \times 10^{39}$ erg s^{-1} . The accretion rate is then probably lower than in the second *Chandra* observation. The “group 1” *Swift* observations represent a sort of intermediate state in which the accretion rate is probably smaller than that of the second *Chandra* observation, but higher than that in the first. While the outflow was still strong, the ionising flux from the disc decreased and then the fraction of neutral wind material became higher, absorbing more effectively its own emission and that of the inner regions. We note that the column density of these observations is $\sim 0.6 \times 10^{21}$ erg s^{-1} , the highest amongst all the spectra considered here. The absorbed luminosity (and count rate) is so low because the view of the central regions is highly suppressed by this obscuring low-ionisation component. Finally, the interpretation of the state of the source during the “group 2” *Swift* observations depends somewhat on the spectral fit considered (see Table 2). Assuming the single component disc fit, the intrinsic low luminosity and intrinsic column density, on one side, and the lack of the soft component on the other, may suggest that the accretion rate is at the lowest level. According to numerical simulations (e.g. Poutanen et al. 2007; Ohsuga et al. 2009), this would represent a state in which the wind photosphere is not extended and the wind

opening angle decreases to the point that it is no longer intersecting our line of sight towards the central regions. Considering the two-components fit, the situation is less clear, but may be suggestive of a relatively weak wind with a still well developed neutral fraction. As the two “group 2” *Swift* observations were collected within 20 days after the first low flux interval (see Fig 2), this second scenario may be preferable unless we allow for a total suppression of the wind in such a small timescale.

One of the tests of the super-Eddington scenario is the detection of absorption features originating in the warm wind. The counting statistics of both the *Swift* and *Chandra* data did not allow us to perform a detailed analysis, but we note that there are marginally significant residuals in the spectral fits at ~ 1 keV in all the spectra. Middleton et al. (2014a) interpreted features of this type as arising in the wind. Deeper observations and higher quality spectra will help to confirm these claims.

Finally, we comment on the dips in NGC 55 ULX1. One of the aims of the *Swift* monitoring was to unveil possible flux-dependent dips. In the *XMM-Newton* data, dips lasting for 100–300s were observed only during the high flux states, and they were explained as caused by optically thick clouds of matter in the source environment, that from time to time encounter our line of sight (Stobbart et al. 2004). If the mechanism for producing them is similar to that of the Low Mass X-ray binary systems (LMXBs), then the source is seen at relatively high inclination ($> 65^\circ$, e.g. White et al. 1983). However, although we have observed the source spanning a rather large interval in flux (a factor of 3–4 in both the *Chandra* and *Swift* data), no clear dip episodes were observed but only marginal drops in the flux. Assuming occultation of 80–90% of the persistent flux, for the given exposure times of the *Chandra* and *Swift* observations, we would expect to detect a large number of dips. However the counting statistics of these datasets was poor, with large uncertainties (~ 40 – 60%) at the flux level of the candidate dips: for the *Swift* data, we could investigate only dips longer than 300s, while in the *Chandra* data we could investigate shorter timescales. In some *Swift* observations and in the two *Chandra* observations, we found marginal hints of narrow drops in the count rate although most of them are consistent with the mean within 3σ . An analysis of the lightcurves in the 2.0–4.5 keV energy band, where Stobbart et al. (2004) found the strongest evidence of dips, showed that the counting statistics was, even more, too poor to allow detection of dips. In addition, the hardness ratios do not show any clear spectral change between dips and ‘persistent’ episodes.

The lack of evidence of detectable dips in our data can therefore be attributed either to poor counting statistics or to the random occurrence of favourable/unfavourable obscuring conditions by blobs in the wind. The latter is ultimately related to the unknown physical interplay between the accretion phase and the disc/wind propagation (Middleton et al. 2014c) in NGC 55 ULX1. Indeed, also the spectral variability of the soft component suggests that the wind, and its ionisation, could be highly variable on time scales from a few ks (the duration of the dips in the *XMM-Newton* lightcurve) to several days (high flux *Swift* observations).

Further spectral investigations, complemented with a timing analysis, using high quality observations will allow us to further improve our understanding of NGC 55 ULX1 and the role of outflows in ULXs.

ACKNOWLEDGMENTS

We thank the anonymous referee for the useful comments and suggestions. F.P., P.E., L.Z., and A.W. acknowledge financial support from the INAF research grant PRIN-2011-1 (“Challenging Ultra-luminous X-ray sources: chasing their black holes and formation pathways”) and the ASI/INAF contract I/004/11/0 and ASI/INAF n. I/037/12/0. PE acknowledges a Fulbright Research Scholar grant administered by the U.S.–Italy Fulbright Commission and is grateful to the Harvard–Smithsonian Center for Astrophysics for hosting him during his Fulbright exchange. This research is based on observations made by the *Chandra* X-ray Observatory and has made use of software provided by the *Chandra* X-ray Center (CXC, operated for NASA by SAO) in the application packages CIAO and ChIPS. This research is based on observations with the NASA/UKSA/ASI mission *Swift*.

REFERENCES

- Abramowicz M. A., Czerny B., Lasota J. P., Szuszkiewicz E., 1988, *ApJ*, 332, 646
- Arnaud K. A., 1996, in Jacoby, G. H. and Barnes, J., eds., *Astronomical Data Analysis Software and Systems V*. Vol. 101 of ASP Conf. Ser., San Francisco CA, XSPEC: The First Ten Years. p. 17
- Bachetti M., Harrison F. A., Walton D. J., Grefenstette B. W., Chakrabarty D., Fürst F., Barret e. a., 2014, *Nature*, 514, 202
- Bachetti M., Rana V., Walton D. J., Barret D., Harrison F. A. e. a., 2013, *ApJ*, 778, 163
- Belczynski K., Bulik T., Fryer C. L., Ruiter A., Valsecchi F., Vink J. S., Hurley J. R., 2010, *ApJ*, 714, 1217
- Burrows D. N., et al., 2005, *Space Science Reviews*, 120, 165
- Caballero-Garcia M. D., Belloni T., Wolter A., 2013, *ArXiv e-prints*
- Colbert E. J. M., Mushotzky R. F., 1999, *ApJ*, 519, 89
- Davis J. E., 2001, *ApJ*, 562, 575
- Fabbiano G., 1989, *ARA&A*, 27, 87
- Farrell S. A., Webb N. A., Barret D., Godet O., Rodrigues J. M., 2009, *Nature*, 460, 73
- Feng H., Kaaret P., 2009, *ApJ*, 696, 1712
- Feng H., Soria R., 2011, *New Astronomy Reviews*, 55, 166
- Fruscione A., McDowell J. C., et al. A., 2006, in *Society of Photo-Optical Instrumentation Engineers (SPIE) Conference Series Vol. 6270 of Society of Photo-Optical Instrumentation Engineers (SPIE) Conference Series*, CIAO: Chandra’s data analysis system
- Garmire G. P., Bautz M. W., Ford P. G., Nousek J. A., Ricker Jr. G. R., 2003, in *X-Ray and Gamma-Ray Telescopes and Instruments for Astronomy*. Edited by Truemper, J. E. and Tananbaum, H. D. Vol. 4851 of *Proceedings of the SPIE*. SPIE, Bellingham WA, Advanced CCD imaging spectrometer (ACIS) instrument on the *Chandra* X-ray Observatory. pp 28–44
- Gladstone J. C., Roberts T. P., Done C., 2009, *MNRAS*, 397, 1836
- Grisé F., Kaaret P., Corbel S., Cseh D., Feng H., 2013, *MNRAS*, 433, 1023
- Heil L. M., Vaughan S., Roberts T. P., 2009, *MNRAS*, 397, 1061
- Hill J. E., et al., 2004, in Flanagan K. A., Siegmund O. H. W., eds, *X-ray and Gamma-ray instrumentation for Astronomy XIII*. Vol. 5165 of *SPIE Conference Series*, Bellingham WA, Readout modes and automated operation of the *Swift* X-ray Telescope. pp 217–231

- Kajava J. J. E., Poutanen J., 2009, MNRAS, 398, 1450
- Kalberla P. M. W., Burton W. B., Hartmann D., Arnal E. M., Bajaja E., Morras R., Pöppel W. G. L., 2005, A&A, 440, 775
- Karachentsev I. D., Grebel E. K., Sharina M. E., Dolphin A. E., Geisler D., Guhathakurta P., Hodge P. W., Karachentseva V. E., Sarajedini A., Seitzer P., 2003, A&A, 404, 93
- Kawaguchi T., 2003, ApJ, 593, 69
- King A. R., Davies M. B., Ward M. J., Fabbiano G., Elvis M., 2001, ApJ, 552, L109
- Lin D., Irwin J. A., Webb N. A., Barret D., Remillard R. A., 2013, ApJ, 779, 149
- Liu J.-F., Bregman J. N., Bai Y., Justham S., Crowther P., 2013, Nature, 503, 500
- Madau P., Rees M. J., 2001, ApJ, 551, L27
- Mapelli M., Annibali F., Zampieri L., Soria R., 2013, MNRAS, 433, 849
- Mapelli M., Colpi M., Zampieri L., 2009, MNRAS, 395, L71
- Mapelli M., Zampieri L., Mayer L., 2012, MNRAS, 423, 1309
- McClintock J. E., Remillard R. A., 2006, in Compact stellar X-ray sources, ed. W. H. G. Levin and M. van der Klis. Cambridge: Cambridge University Press, p. 157
- Middleton M., Heil L., Pintore F., Walton D., Roberts T., 2014, ArXiv e-prints
- Middleton M. J., Roberts T. P., Done C., Jackson F. E., 2011, MNRAS, 411, 644
- Middleton M. J., Sutton A. D., Roberts T. P., 2011, MNRAS, 417, 464
- Middleton M. J., Sutton A. D., Roberts T. P., Jackson F. E., Done C., 2012, MNRAS, 420, 2969
- Middleton M. J., Walton D. J., Roberts T. P., Heil L., 2014, MNRAS, 438, L51
- Miller J. M., Bachetti M., Barret D., Harrison F. A., Fabian A. C., Webb N. A., Walton D. J., Rana V., 2014, ApJ, 785, L7
- Mineshige S., Hirano A., Kitamoto S., Yamada T. T., Fukue J., 1994, ApJ, 426, 308
- Mitsuda K., Inoue H., Koyama K., Makishima K., Matsuoka M., Ogawara Y., Suzuki K., Tanaka Y., Shibazaki N., Hirano T., 1984, PASJ, 36, 741
- Motch C., Pakull M. W., Soria R., Grisé F., Pietrzyński G., 2014, Nature, 514, 198
- Ohsuga K., Mineshige S., 2007, ApJ, 670, 1283
- Ohsuga K., Mineshige S., 2011, ApJ, 736, 2
- Ohsuga K., Mineshige S., Mori M., Kato Y., 2009, PASJ, 61, L7
- Pasham D. R., Strohmayer T. E., Mushotzky R. F., 2014, Nature, 513, 74
- Pintore F., Zampieri L., 2012, MNRAS, 420, 1107
- Pintore F., Zampieri L., Wolter A., Belloni T., 2014, MNRAS, 439, 3461
- Portegies Zwart S. F., Baumgardt H., Hut P., Makino J., McMillan S. L. W., 2004, Nature, 428, 724
- Poutanen J., Lipunova G., Fabrika S., Butkevich A. G., Abolmasov P., 2007, MNRAS, 377, 1187
- Rana V., Harrison F. A., Bachetti M., Walton D. J., Furst F., Barret D., Miller J. M., Fabian A. C., Boggs S. E., Christensen F. C., Craig W. W., Grefenstette B. W., Hailey C. J., Madsen K. K., Ptak A. F., Stern D., Webb N. A., Zhang W. W., 2014, ArXiv e-prints
- Servillat M., Farrell S. A., Lin D., Godet O., Barret D., Webb N. A., 2011, ApJ, 743, 6
- Soria R., Zampieri L., Zane S., Wu K., 2011, MNRAS, 410, 1886
- Stobbert A.-M., Roberts T. P., Warwick R. S., 2004, MNRAS, 351, 1063
- Stobbert A.-M., Roberts T. P., Wilms J., 2006, MNRAS, 368, 397
- Strohmayer T. E., Mushotzky R. F., Winter L., Soria R., Uttley P., Cropper M., 2007, ApJ, 660, 580
- Suleimanov V. F., Ghosh K. K., Austin R. A., Ramsey B. D., 2002, Astronomy Letters, 28, 745
- Sutton A. D., Roberts T. P., Middleton M. J., 2013, ArXiv e-prints
- Sutton A. D., Roberts T. P., Walton D. J., Gladstone J. C., Scott A. E., 2012, MNRAS, 423, 1154
- Takeuchi S., Ohsuga K., Mineshige S., 2014, PASJ
- van der Marel R. P., 2004, Coevolution of Black Holes and Galaxies, p. 37
- Walton D. J., Harrison F. A., Grefenstette B. W., Miller J. M., Bachetti M., Barret D., Boggs S. E., Christensen F. E., Craig W. W., Fabian A. C., Fuerst F., Hailey C. J., Madsen K. K., Parker M. L., Ptak A., Rana V., Stern D., Webb N. A., Zhang W. W., 2014, ArXiv e-prints
- Walton D. J., Miller J. M., Harrison F. A., Fabian A. C., Roberts T. P., Middleton M. J., Reis R. C., 2013, ApJ, 773, L9
- Walton D. J., Miller J. M., Reis R. C., Fabian A. C., 2012, MNRAS, 426, 473
- Watarai K.-y., Mizuno T., Mineshige S., 2001, ApJ, 549, L77
- Webb N. A., Barret D., Godet O., Servillat M., Farrell S. A., Oates S. R., 2010, ApJ, 712, L107
- White N. E., Swank J. H., Holt S. S., 1983, ApJ, 270, 711
- Zampieri L., Roberts T. P., 2009, MNRAS, 400, 677