

**Manchester
Metropolitan
University**

Trethowan, LA and Blonder, B and Kintamani, E and Girmansyah, D and Utteridge, TMA and Brearley, FQ (2021) Metalrich soils increase tropical tree stoichiometric distinctiveness. *Plant and Soil: international journal on plant-soil relationships*, 461 (1-2). pp. 579-589. ISSN 0032-079X

Downloaded from: <https://e-space.mmu.ac.uk/628823/>

Version: Published Version

Publisher: Springer Verlag

DOI: <https://doi.org/10.1007/s11104-021-04839-7>

Usage rights: Creative Commons: Attribution 4.0

Please cite the published version

<https://e-space.mmu.ac.uk>



Metal-rich soils increase tropical tree stoichiometric distinctiveness

Liam A. Trethowan · Benjamin Blonder ·
Endang Kintamani · Deden Girmansyah ·
Timothy M. A. Utteridge · Francis Q. Brearley

Received: 7 October 2020 / Revised: 6 January 2021 / Accepted: 11 January 2021 / Published online: 31 January 2021
© The Author(s) 2021

Abstract

Background and aims Ultramafic soils have high metal concentrations, offering a key opportunity to understand if such metals are strong predictors of leaf stoichiometry. This is particularly relevant for tropical forests where large knowledge gaps exist.

Methods On the tropical island of Sulawesi, Indonesia, we sampled forests on sand, limestone, mafic and ultramafic soils that present a range of soil metal concentrations. We asked how variation in 12 soil elements (metals and macronutrients) influenced leaf

stoichiometry and whether stoichiometric distinctiveness (the average difference between a species and all others in a multivariate space, the axes of which are the concentrations of each leaf element) is influenced by increasing soil metal concentrations.

Results Positive correlations between corresponding elements in soils and leaves were only found for Ca and P. Noticeably, soil Cr had a negative effect upon leaf P. Whilst most species had low stoichiometric distinctiveness, some species had greater distinctiveness on stressful metal-rich ultramafic soils, generally caused by the accumulation of Al, Co, Cr or Ni.

Conclusions Our observation of increased stoichiometric distinctiveness in tropical forests on ultramafic soils indicates greater niche differentiation, and contrasts with the assumption that stressful environments remove species with extreme phenotypes.

Responsible Editor: Wen-Hao Zhang.

L. A. Trethowan · T. M. A. Utteridge
Herbarium Kew, London, UK

L. A. Trethowan (✉) · F. Q. Brearley
Manchester Metropolitan University, Manchester, UK
e-mail: l.trethowan@kew.org

B. Blonder
University of California at Berkeley, Berkeley, CA, USA

B. Blonder
Arizona State University, Tempe, AZ, USA

B. Blonder
University of Oxford, Oxford, UK

E. Kintamani · D. Girmansyah
Herbarium Bogoriense, Cibinong, Indonesia

Keywords Ecological stoichiometry · Functional distinctiveness · Indonesia · Limestone · Mafic · Sand · Serpentine · Sulawesi

Introduction

Relationships between the majority of elements found in soils and plant tissues are poorly understood (Kaspari and Powers 2016). Species' stoichiometry (the balance of elements in an organism) may match the environment, or species could preferentially take up key elements needed for plant function (Turner et al. 2018). Equally, if uptake of an element has negative

consequences, they can actively be excluded by species (Kazakou et al. 2008). For species that tolerate and survive on contrasting soil types, the relationships between tissue stoichiometry and the mosaic of elements available in the environment is unlikely to be simple (Kaspari and Powers 2016). Tissue elements may be primarily influenced by that same element in the soil. However, elemental concentrations are often tied to a different element that plays an indirect role in uptake (Yuan et al. 2011; Liu et al. 2017). For instance, in *Arabidopsis*, nitrate uptake is reliant upon calcium-signalling pathways (Liu et al. 2017). Alternatively, elements may have a negative effect upon one another because of competition for identical membrane transporters. For instance, Fe and Co use the same membrane transporter, and when the latter element is available in the environment it limits the former's uptake (Lange et al. 2017). Whilst relationships between plants and soils for macronutrients are well studied, many essential elements have received little attention (Kerckhoff et al. 2006; Elser et al. 2010; Kaspari and Powers 2016). Elements such as Al, Ca and Mg are only occasionally examined (Tripler et al. 2006; Metali et al. 2015; Zemunik et al. 2018), whereas other metallic elements, e.g. Cu, Ni and Zn, are even less well understood (van der Ent et al. 2018b).

In most ecosystems, soil stoichiometry is a good predictor of plant stoichiometry (Thompson et al. 1997; Tuah et al. 2003; Metali et al. 2015). In tropical tree communities however, there is little clarity about metal element uptake and its influence on co-uptake of macronutrients (Zemunik et al. 2018). Understanding effects of metallic elements is important because they can be toxic for plants. Cu, Ni, Zn etc. can damage the machinery behind plant processes responsible for growth (photosynthesis, respiration) and therefore can indirectly affect competitive interactions between individuals/species (Küpper and Andresen 2016; Mohiley et al. 2020). Without a greater understanding of metals in plants we cannot be sure how stoichiometry influences the functioning of tropical ecosystems and the huge number of species they support (Cleveland et al. 2011).

Plants with different traits build their tissues and organs with different concentrations of elements (Ågren 2008). For example, plant species with short lived, delicate leaves have greater foliar P whilst those with long lived, tough leaves can have low P concentrations (Wright et al. 2004; Sardans and Peñuelas

2013). Likewise, below ground, fine root N concentrations are positively correlated with respiration but negatively with traits associated with toughness (Roumet et al. 2016). Therefore, trait shifts caused by the environment should lead to parallel shifts in stoichiometry (Meunier et al. 2017).

For plant function to change, the suite of elements in plants must also change. This suite can be represented by a multivariate space, the axes of which are based upon concentrations of each element. A species' position within this space can therefore be thought of as a measurement of plant function based upon stoichiometry (González et al. 2017; Ågren and Weih 2020). The differences between species within this space represents functional differences between them (Violle et al. 2017). These differences can be quantified using a measure known as 'functional distinctiveness' - the average distance between a species and all others in a multivariate space based upon functional traits (Grenié et al. 2017). Functional distinctiveness is important because it is linked to competition (MacArthur and Levins 1967), niche differentiation and abundance (Kraft et al. 2015; Umaña et al. 2017b). The ties between plant stoichiometry and function suggest that stoichiometric functional distinctiveness, with trait axes corresponding to tissue element concentrations, should be equally useful for predicting competition and niche differentiation within communities.

Stoichiometry is constrained by minimum element concentrations needed for cellular function and by maximum concentrations, beyond which a toxicity threshold is crossed (Meunier et al. 2014). Within these constraints, distinctiveness may vary dependent upon fitness differences associated with contrasting stoichiometry. If there is one point of optimum fitness we would expect a single mode in the distinctiveness distribution (Parker and Maynard Smith 1990). Conversely, there may be multiple optima due to trade-offs between different elements (Marks and Lechowicz 2006; D'Andrea et al. 2020; Worthy et al. 2020). For instance, one optimal strategy may require an element that shares a membrane transporter with another. This second element would be outcompeted at transporters if the first is found at high concentrations (Andresen et al. 2018). The second element at higher concentrations may offer an equal fitness benefit but would likewise outcompete the first element for transport/uptake. The two approaches, of equal fitness, would result in very different stoichiometry. This could lead to multiple fitness optima

associated with multiple modes in the stoichiometric distinctiveness distribution (Laughlin et al. 2015). The environment should also be influential: for instance, a more variable environment may support a greater range of trait strategies (Kraft et al. 2008; Stark et al. 2017) as a result of there being more fitness optima (Levin and Muller-Landau 2000; Marks and Lechowicz 2006). If this is the case, we would expect an effect of soil element concentrations upon stoichiometric distinctiveness.

For some species, the hyperaccumulation of tissue metal beyond the thresholds of most other species can be a viable strategy to deal with high metal concentrations in soils (van der Ent et al. 2013a; Andresen et al. 2018). Most species exclude potentially detrimental metals. Some species do accumulate metals however – metal chelators aid transport to the relatively metabolically inactive vacuole or cell wall for storage (Peng et al. 2020). Exogenous storage in high concentration patches on leaves has also been observed (van der Ent et al. 2018a). To examine the accumulation of metals in tropical tree species we sampled the little studied, species-rich forests over ultramafic soils (van der Ent et al. 2018b; Lopez et al. 2019). Ultramafic soils derive from the weathering of mantle derived geology rich in metals e.g. Ni, Co and Cr (Moores 2011). The stoichiometry of the resulting soils reflects this weathering (high Ni, Co, Cr etc.), as can their plant communities – which feature the vast majority of metal hyperaccumulators (van der Ent et al. 2013a). Here we quantify multi-element soil-tree stoichiometry across tropical ultramafic and non-ultramafic sites.

This study focuses on Sulawesi, an island in central Indonesia, part of the Wallacea biodiversity hotspot that features the tropics' largest outcrop of ultramafic soils (van der Ent et al. 2013b; Galey et al. 2017). Forest plots were established on sand, limestone, mafic and ultramafic soils (Trethowan et al. 2020). We examine the relationships between Al, Ca, Co, Cr, Cu, Fe, K, Mg, Mn, Ni, P and Zn in soils vs. leaf tissue, and test how variability of these elements in soil affects tree species stoichiometry and stoichiometric distinctiveness.

Materials and methods

Sample collection

Ten 50 × 50 m permanent primary forest plots were established across Sulawesi (Trethowan et al. 2020).

Study locations were centred around the tropics' largest mafic/ultramafic complex (van der Ent et al. 2013b). Two plots were located on ultramafic soils, at the complex's centre, in Morowali Nature Reserve. We established four plots at the complex's eastern periphery, in protected forests of the Bualemo peninsula. This consisted of two plots on mafic (basalt) soils, a single plot on a limestone hill and another in a limestone valley. Four plots were located at the south-eastern periphery, in protected forest of Wawonii Island. These consisted of two plots on ultramafic soils and two on sand.

We sampled all trees ≥ 10 cm diameter at breast height (1.3 m). Herbarium specimens were collected for species identification (Utteridge and Bramley 2015; Baker et al. 2017). Samples for tissue elemental analysis consisted of mature, shade leaves from all species in each plot. Shade leaves were collected because shade is the condition that most leaves experience (Keenan and Niinemets 2016) and, on a practical basis, were more accessible to tree climbers – this does however mean we did not examine sun-exposed leaves which may show different responses. One or two leaves were collected from a single branch and heat dried in the field; to avoid soot deposition, leaves were placed within envelopes during drying. Soil samples were taken from the upper 10 cm of topsoil at the centre of all 10 × 10 m subplots; all samples from each plot were then pooled for further analysis giving us a total of ten soil samples for analysis. We acknowledge these pooled samples will have led to us missing fine scale edaphic influences on foliar stoichiometry. All plots had 'upland' soils so did not experience waterlogging. The upper 10 cm of topsoil is generally representative of the nutrients tropical trees are exposed to because this is where up to half of the total fine root mass is found, with an exponential decline in mass with soil depth (Brearley 2013; Lalnunzira et al. 2019).

Leaf tissue stoichiometry

A total of 723 leaf samples were collected from 283 species. The number of samples per plot ranged from 47 to 105. Species richness ranged from 38 to 53 across the plots. Generally, each species was sampled once in each plot it occurred within. When species were sampled more than once in each plot the mean element concentration of that species within the plot was used. A subsample of each of the leaves (c. 100 mg) was digested in 10 ml of concentrated HNO₃ using a CEM

Mars Xpress microwave (1200 W with a 15 minute ramp and 20 minute hold time at 170 °C) and made up to 100 ml in ultrapure (18 M Ω) deionised water. Al, Ca, Co, Cr, Cu, Fe, K, Mg, Mn, Ni, P and Zn concentrations were quantified using a Thermo-Finnegan iCAP 6300 Duo inductively coupled plasma optical emission spectrometer.

For quality control, certified reference material (LGC 7162, Strawberry Leaves) was analysed alongside the samples. Reference sample measurements did not differ from certified values for any element (Wilcoxon $P > 0.05$). Additionally, 61 leaf samples were washed by sonicating for five minutes in deionised water to determine if there was any soil contamination. The sonicated samples did not differ from unwashed samples (Wilcoxon $P > 0.05$) indicating our samples were not contaminated; we therefore used unwashed samples for all analyses.

Soil stoichiometry data

Total soil Al, Ca, Co, Cr, Cu, Fe, K, Mg, Mn, Ni, P and Zn were quantified via digestion of 0.5 g of thoroughly ground and homogenised soil in 5 ml HNO₃ and 1 ml HClO₄ at 100 to 200 °C by ramping over 7 hours. Samples were diluted to 25 ml with deionised water and analysed on an Agilent Technologies 4100 microwave plasma atomic emission spectrometer (Co, Cr and Ni) or an Agilent Technologies 200 Series atomic absorption spectrometer (all other elements).

Edaphic effect upon species leaf stoichiometry

We explored the relationships between soil and leaf elements using partial least squares regression (PLS) - this approach identifies the effects of multiple predictor variables while accounting for covariation amongst them (Wehrens and Mevik 2007). We square root-transformed all soil and leaf element concentrations to reduce the influence of outlying values, then scaled (z-scores used) prior to PLS to ensure regression coefficient estimates were comparable between elements. In a single model, we tested for the effect of each soil element upon each leaf element, whilst accounting for covariation in soil elements.

Edaphic effect upon species stoichiometric distinctiveness

Our distinctiveness measure was the mean distance of a species to all others in a multivariate space, the axes of

which were each scaled (z-score) leaf element concentration (Violle et al. 2017). We did not reduce leaf stoichiometry axes down to a set of PC axes because there was little covariation between elements (nine PC axes were required to explain 90 % of the variation in the data).

To examine edaphic influence on leaf stoichiometry, we used phylogenetic generalised least square regression (PGLS) following Metali et al. (2012). We incorporated phylogenetic distance into the analysis because related species are not independent samples (Hurlbert 1984; Verboom et al. 2017; Ives 2018). The square-root of species stoichiometric distinctiveness was the response variable and soil principal component (PC) axes were the predictor variables.

Phylogenetic data were derived from a plant family resolved supertree provided by Gastauer et al. (2017), pruned to consist of the taxa identified across the plot series using Phylomatic (Webb and Donoghue 2005). The resolved phylogeny was then dated according to Magallón et al. (2015).

All analyses were performed in R version 3.4.1 (R Core Team 2019). The phylogeny was dated with the Bladj algorithm in *PhylocomR* 0.3.2 (Ooms et al. 2018), PLS regression was performed with *pls* 2.7 (Wehrens and Mevik 2007), stoichiometric distinctiveness was quantified with *funrar* 1.3.1 (Grenié et al. 2017), and PGLS regression was performed with *nlme* 3.1 (Pinheiro et al. 2013).

Results

Edaphic effect upon species leaf stoichiometry

We found that the first two partial least squares axes explained 72 % of the variability in the relationship between soil and leaf element concentrations. These two axes showed large positive effects (regression coefficient > 0.1) of soil Al and P concentration upon leaf Ca, Cu, and P concentration, and soil Ca concentration upon leaf Ca and P concentration (Fig. 1a). We found large positive effects of soil Cr and Fe concentration upon leaf Ni concentration (Fig. 1a). Large negative effects (regression coefficients < -0.1) were found for soil Cr concentration upon concentration of leaf P (Fig. 1a). Generally, we did not find clear effects of soil elements upon the reciprocal element in leaves, except

for Ca and P (Fig. 1b). All soil and leaf element pairwise relationships can be found in Fig. S1.

Edaphic effect upon species stoichiometric distinctiveness

Five PC axes explained > 90 % variation in the soil data. The first axis was responsible for a gradient of Co, Fe, Mn and Zn; the second, for Al, Ca and P; the third, for high Cr and Cu to high Co, Mg and Ni; the fourth, for high Co to high Mg; and the fifth for K (Table 1).

There was a significant effect of the first and third soil PC axes on species stoichiometric distinctiveness ($P < 0.001$, Fig. 2, Table S1). These axes, as detailed above, were responsible for a gradient in metals rather than macronutrients, which is indicative of a general positive relationship between soil metal concentration and stoichiometric distinctiveness. We also found a weak significant effect of the second PC axis which represents a gradient of Al and the macronutrients Ca and P ($P < 0.05$, Fig. 2; Table 1).

Species with high distinctiveness tended to have either high Al, Co, Cr or Ni (Fig. 3a). For instance, amongst the species with highest distinctiveness (Fig. 3a), there were three species of *Symplocos* (Symplocaceae) with high Al (23,800–36,600 mg kg⁻¹) and Cr (18.8–97.2 mg kg⁻¹), Cr was also high in one morphospecies (a term used for a species collected that does not match previously described species) of both *Syzygium* (Myrtaceae) (55.6 mg kg⁻¹) and *Chionanthus* (Oleaceae) (89.4 mg kg⁻¹). High Co and Ni was found in a morphospecies of *Ostodes* (Euphorbiaceae) (165 mg kg⁻¹ Co and 202 mg kg⁻¹ Ni) and *Sauropus* (Phyllanthaceae) (114 mg kg⁻¹ Co and 484 mg kg⁻¹ Ni). High Ni was found in *Sarcotheca celebica* (Oxalidaceae) (1080 mg kg⁻¹). There were also two species with high distinctiveness due to elevated Ca concentrations, *Dendrocnide microstigma* (Urticaceae) (58,800 mg kg⁻¹) and *Drypetes ovalis* (Putranjivaceae) (65,400 mg kg⁻¹) (Fig. 3a).

Discussion

We found that tropical tree leaf stoichiometry shows limited change in the face of soil heterogeneity - except for some species found on ultramafic soils that are distinct from all others. This warrants two points for

discussion: (1) why do we find limited effects of soil on leaf stoichiometry in our study system? And (2) why do ultramafic soils increase stoichiometric distinctiveness of tropical trees?

Previously, log-linear relationships between soil and tissue stoichiometry, specifically N:P ratios, have been identified (Elser et al. 2010). In contrast, we found little correlation for many elements between soil and tissue stoichiometry. The likeliest explanation is that, when looking at a broad spectrum of elements across soils, most species' leaf stoichiometry remains similar, buffered from variation in soil stoichiometry. This is because stoichiometry within the upper and lower bounds of a range of concentrations is needed to support cellular processes, irrespective of soil type (Meunier et al. 2014; González et al. 2017). However, some of the elements that do not obey this rule are worth noting. We see strong positive effects of soil Al, Ca and P upon leaf Ca and P. Positive correlations between these elements in tropical forests has been seen before, both when looking at just tissue stoichiometry (Masunaga et al. 1998; Metali et al. 2015) and also, as in our study, between tissue and soil (Asner et al. 2014). Added to that, we find evidence for metal impact as soil Cr has a strong negative relationship with leaf P, possibly a result of competition between Cr and phosphate for shared cross-membrane transport proteins (Sinha et al. 2018). This could lead to a potentially influential deficiency in P, considering ultramafic soils are naturally low in P (Porder and Ramachandran 2013). Broadly, we found minimal effects of most soil element concentrations upon tissue element concentrations. When we did find effects, they are not necessarily intuitive i.e. soil element X does not directly influence leaf element X. Macronutrients tended to have a positive relationship between soils and leaves whereas other metals did not. When soil metals (Cr and Fe) did covary with leaf elements it was not in the reciprocal elements but others (P and Ni). It appears that the complex relationship between elements required for plant function (Kaspari and Powers 2016) is reflected by an equally multi-faceted relationship between soils and plant tissues.

Why, in ultramafic communities, have we found some species with high stoichiometric distinctiveness (Fig. 3b)? It has been suggested that plants are generally adapted for competition, stress tolerance or rapid establishment after recent disturbance (Grime 1977). Previously, species adapted for competition or rapid establishment have been shown to have reduced

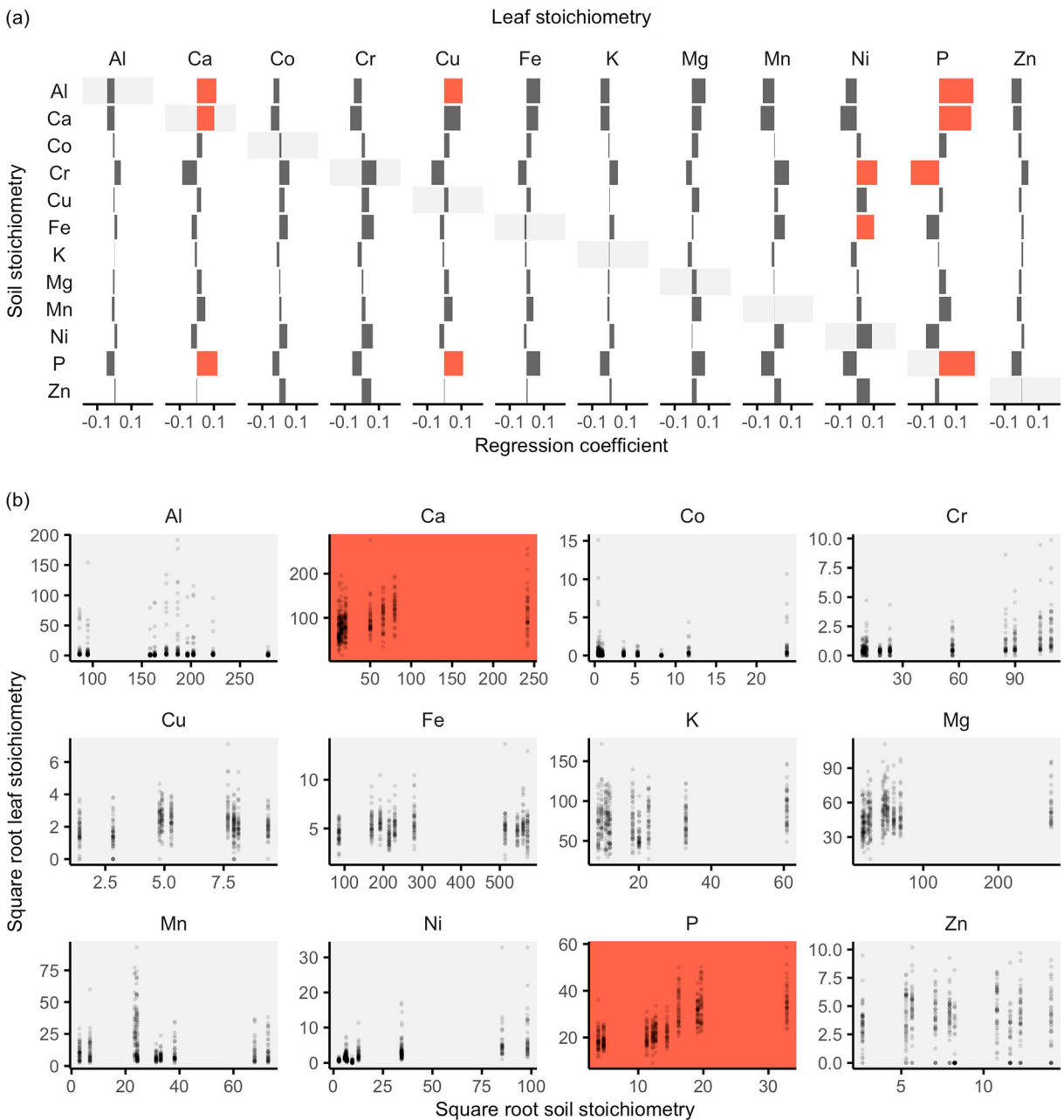


Fig. 1 **a** Regression coefficients from partial least squares (PLS) regression of the relationships between soil and leaf element concentrations in tree communities of Sulawesi, Indonesia. Large effects of soil metal upon leaf metal (coefficient > 0.1 or < -0.1) are

bars coloured red. Effects of soil upon reciprocal leaf element concentration have a light grey background. **b** Pairwise relationships between soil element and reciprocal leaf element. Large effects (< -0.1 or > 0.1) from the PLS regression are in red

distinctiveness (based upon traits) (Umaña et al. 2017a). Our data suggests that increased distinctiveness could be a result of stress tolerance. We find that species with high stoichiometric distinctiveness have high concentrations of metals not classified as macronutrients (Fig. 3a).

Metal accumulation is largely found in species that tolerate the stresses of metal-rich soils (van der Ent et al. 2013a). Furthermore, metal accumulator species are often outcompeted in more benign environments (Reeves et al. 1999) - another signifier of stress tolerance

Table 1 Soil principal component (PC) loadings for PC axes used in the analysis of leaf stoichiometry across tree communities in Sulawesi, Indonesia. Percentage of total explained by each PC axis is in brackets

Element	PC1 (45%)	PC2 (23%)	PC3 (12%)	PC4 (8%)	PC5 (7%)
P	0.12	0.45	0.09	0.02	0.02
K	0.19	-0.04	0.04	-0.08	0.94
Ca	0.14	0.44	0.03	0.00	-0.17
Mg	-0.19	0.03	0.27	0.84	0.13
Fe	-0.41	0.00	-0.24	0.05	0.03
Al	0.07	0.42	-0.04	-0.05	0.04
Mn	-0.35	0.07	0.43	0.02	0.06
Cu	-0.35	0.05	-0.32	0.04	0.07
Zn	-0.40	0.10	-0.14	-0.15	0.20
Ni	-0.34	0.01	0.40	-0.08	-0.07
Cr	-0.33	-0.05	-0.47	0.03	0.01
Co	-0.30	0.07	0.37	-0.49	0.03

(Grime 1977). Therefore, it appears that in diverse tropical forest, increased stoichiometric distinctiveness allows tree species to tolerate metal-rich ultramafic soils.

The observation of species becoming more distinct in response to stress contrasts with evidence gathered from other abiotic gradients. For communities exposed to stressful climatic change with elevation or along a soil fertility gradient the response is the reduction in species distinctiveness (Laughlin et al. 2015; Verboom et al. 2017; Umaña and Swenson 2019), where the environment removes species that are far from their optimum in stressful conditions. However, we show that under edaphic stress, the response from a stoichiometric perspective can be increasing distinctiveness. This is presumably because there are alternate strategies of

optimum fitness within the metal-rich stressful environment (Marks and Lechowicz 2006; Worthy et al. 2020). The presence of alternate strategies indicates increasing difference in the biotic and abiotic environment occupied by species (i.e. niche differentiation) (Letten et al. 2017; Peñuelas et al. 2019). This tends to reflect species competing less for key resources – which is often touted for communities in stressful environments (Freestone 2006; Niu et al. 2020).

Stoichiometric distinctiveness may also be linked to niche differentiation. In the sites studied here, it is generally the accumulation of the metals Al, Co, Cr and Ni in tissue that causes distinctiveness (we also find a few cases of high distinctiveness due to high leaf Ca on limestone; Fig. 3a). Metal accumulation may offer a defence against herbivory by reducing palatability, in a similar way to polyphenols and proteases (Boyd 2004; Kazemi-Dinan et al. 2014; Volf et al. 2018; Coley et al. 2019). High leaf metal concentrations may also aid conspecific recruitment, because competitors are less able to deal with localised spikes in soil metal concentrations that result from leaf litter with high metal concentrations (Boyd and Martens 1998; Boyd and Jaffré 2001; Mohiley et al. 2020). These interactions should be mediated by intraspecific variability in stoichiometric distinctiveness, particularly considering the facultative nature of metal accumulation between many populations (Pollard et al. 2014). How, and if, the above mechanisms affect competition in tropical forests remains uncertain. If greater stoichiometric distinctiveness does reflect greater niche differentiation we expect it to allow species to persist when they would otherwise be outcompeted and removed from communities (Levine and HilleRisLambers 2009). This should contribute to the coexistence of species in high diversity ultramafic rich tropical regions (Rahbek et al. 2019).

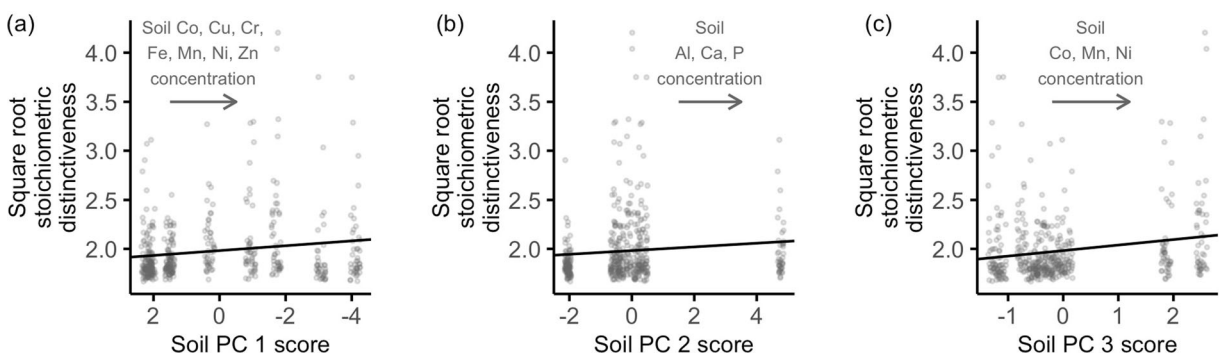


Fig. 2 Significant effect of soil principal components (PC) (a) 1 ($p < 0.001$), (b) 2 ($p < 0.05$) and (c) 3 ($p < 0.001$) upon species stoichiometric distinctiveness identified with phylogenetic generalised least squares regression for tree communities in Sulawesi, Indonesia

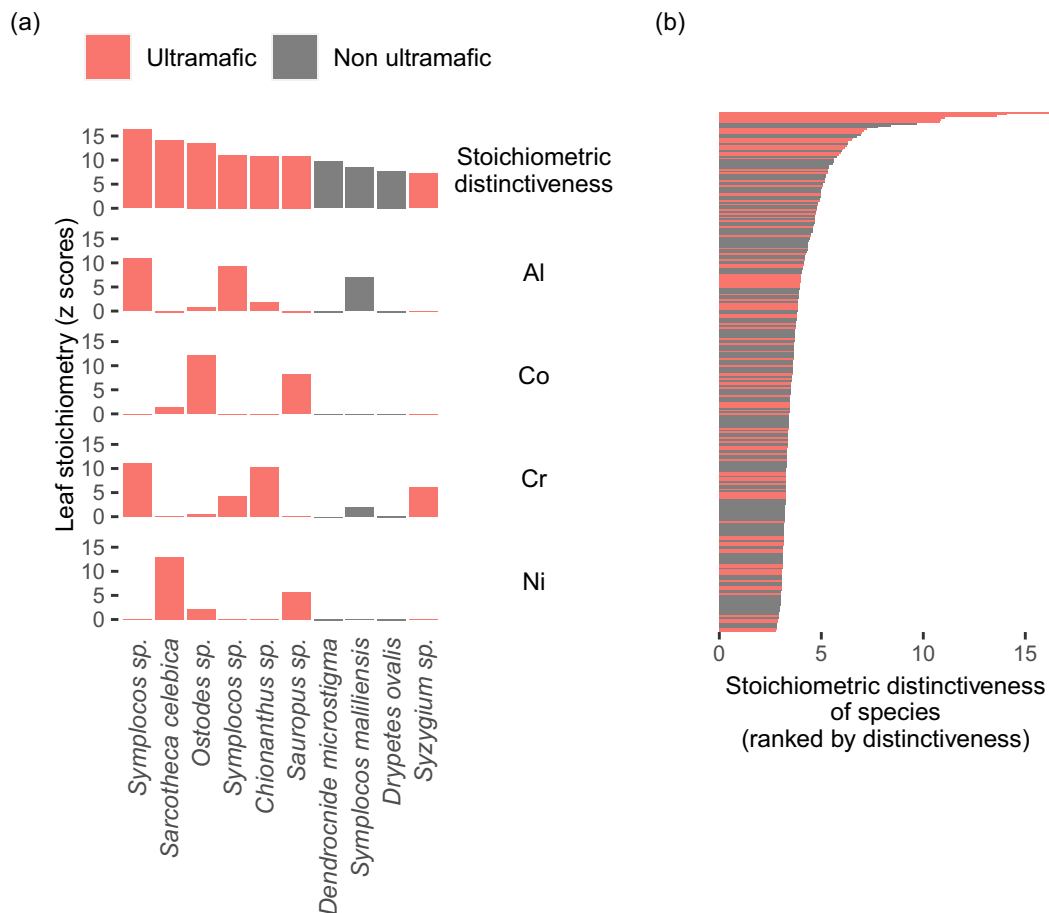


Fig. 3 **a** Metal elements (Al, Co, Cr, Ni) in leaves of the ten species with greatest stoichiometric distinctiveness across contrasting tree communities in Sulawesi, Indonesia.

b Stoichiometric distinctiveness values of all species across tree communities in Sulawesi. Red bars indicate the presence of species in ultramafic communities

Our results come with the caveat of not using soil pH or bioavailable soil element data – the former determining the latter. Although our finding that increasing soil metal drives increasing leaf metal makes sense, in terms of biology, addition of this extra data would reinforce the conclusions presented. Despite this drawback, examination of remote ultramafic tropical forest communities are rare. This study is a starting point for understanding these complex diverse systems that are threatened by increasing human demand for metals and the mining this requires (van der Ent et al. 2013b). We found that the effects of metal-rich ultramafic soils upon tropical trees is not simply a change in leaf stoichiometry across all species. Species mostly retain similar leaf stoichiometry irrespective of substrate. However, some species on ultramafic soils accumulate metals (e.g. Cr, Ni), resulting in distinct stoichiometry from all other members of the community. This variable

stoichiometric distinctiveness likely has implications for interspecific competition in highly diverse tropical forests.

Supplementary Information The online version contains supplementary material available at <https://doi.org/10.1007/s11104-021-04839-7>.

Acknowledgements We acknowledge the Indonesian Ministry of Research and Technology (RisTek) for permission to perform fieldwork and Herbarium Bogoriense (BO) for the Memorandum of Understanding and Material Transfer Agreement to support this permission. We thank Indonesian forestry departments and staff at Aliansi Konservasi Tompotika for support in the field. Fieldwork was only possible due to the help of guides: Aga, Yes, Amin, Muksin, Sumardin, Dado, Hanya, Ete, Asrion, Lendo, Manto and Peno. LAT's funding was provided by the Bentham Moxon Trust, Coalbourn Trust, Botanical Research Fund, an MMU postgraduate studentship and Emily Holmes awards. FQB thanks NERC for funding a trip to Sulawesi. We thank David McKendry for help

with leaf sample analysis and the Indonesian Agricultural Research Agency (Badan Litbang Kementerian Pertanian) for conducting soil analysis. We thank Jennifer Rowntree, Tim Baker, Giacomo Sellan and three anonymous reviewers for comments that much improved the manuscript.

Data availability Upon acceptance data will be made available here: https://figshare.com/authors/Liam_Trethowan/8268603.

Open Access This article is licensed under a Creative Commons Attribution 4.0 International License, which permits use, sharing, adaptation, distribution and reproduction in any medium or format, as long as you give appropriate credit to the original author(s) and the source, provide a link to the Creative Commons licence, and indicate if changes were made. The images or other third party material in this article are included in the article's Creative Commons licence, unless indicated otherwise in a credit line to the material. If material is not included in the article's Creative Commons licence and your intended use is not permitted by statutory regulation or exceeds the permitted use, you will need to obtain permission directly from the copyright holder. To view a copy of this licence, visit <http://creativecommons.org/licenses/by/4.0/>.

References

- Ågren GI (2008) Stoichiometry and nutrition of plant growth in natural communities. *Annu Rev Ecol Evol Syst* 39:153–170
- Ågren GI, Weih M (2020) Multi-dimensional plant element stoichiometry—looking beyond carbon, nitrogen, and phosphorus. *Front Plant Sci* 11:23
- Andresen E, Peiter E, Küpper H (2018) Trace metal metabolism in plants. *J Exp Bot* 69:909–954
- Asner GP, Martin RE, Tupayachi R et al (2014) Amazonian functional diversity from forest canopy chemical assembly. *PNAS* 111:201401181
- Baker TR, Pennington RT, Dexter KG et al (2017) Maximising synergy among tropical plant systematists, ecologists, and evolutionary biologists. *TREE* 32:258–267
- Boyd RS (2004) Ecology of metal hyperaccumulation. *New Phyt* 162:563–567
- Boyd RS, Jaffré T (2001) Phytoenrichment of soil Ni content by *Sebertia acuminata* in New Caledonia and the concept of elemental allelopathy. *S Afr J Sci* 97:535–538
- Boyd RS, Martens SN (1998) The significance of metal hyperaccumulation for biotic interactions. *Chemoecology* 8: 1–7
- Brearley FQ (2013) Nitrogen stable isotopes indicate differences in nitrogen cycling between two contrasting Jamaican montane forests. *Plant Soil* 367:465–476
- Cleveland CC, Townsend AR, Taylor P et al (2011) Relationships among net primary productivity, nutrients and climate in tropical rain forest: a pan-tropical analysis. *Ecol Lett* 14: 939–947
- Coley PD, Endara M-J, Ghabash G et al (2019) Macroevolutionary patterns in overexpression of tyrosine: an anti-herbivore defence in a speciose tropical tree genus, *Inga* (Fabaceae). *J Ecol* 107:1620–1632
- D'Andrea R, Guittar J, O'Dwyer JP et al (2020) Counting niches: abundance-by-trait patterns reveal niche partitioning in a Neotropical forest. *Ecology* 101:e03019
- Elser JJ, Fagan WF, Kerkhoff AJ et al (2010) Biological stoichiometry of plant production: metabolism, scaling and ecological response to global change. *New Phyt* 186:593–608
- Freestone AL (2006) Facilitation drives local abundance and regional distribution of a rare plant in a harsh environment. *Ecology* 87:2728–2735
- Galey ML, van der Ent A, Iqbal MCM, Rajakaruna N (2017) Ultramafic geoecology of South and Southeast Asia. *Bot Stud* 58:18
- Gastauer M, Neto M, Alves JA (2017) Updated angiosperm family tree for analyzing phylogenetic diversity and community structure. *Acta Bot Brasilica* 31:191–198
- González AL, Dézerald O, Marquet PA et al (2017) The multidimensional stoichiometric niche. *Front Ecol Evol* 5:110
- Grenié M, Denelle P, Tucker CM et al (2017) funrar: an R package to characterize functional rarity. *Divers Distrib* 23:1365–1371
- Grime JP (1977) Evidence for the existence of three primary strategies in plants and its relevance to ecological and evolutionary theory. *Am Nat* 111:1169–1194
- Hurlbert SH (1984) Pseudoreplication and the design of ecological field experiments. *Ecol Monogr* 54:187–211
- Ives AR (2018) Mixed and phylogenetic models: a conceptual introduction to correlated data. Retrieved from: <https://leanpub.com/correlateddata>
- Kaspari M, Powers JS (2016) Biogeochemistry and geographical ecology: embracing all twenty-five elements required to build organisms. *Am Nat* 188:S62–S73
- Kazakou E, Dimitrakopoulos PG, Baker AJM et al (2008) Hypotheses, mechanisms and trade-offs of tolerance and adaptation to serpentine soils: from species to ecosystem level. *Biol Rev* 83:495–508
- Kazemi-Dinan A, Thomaschky S, Stein RJ et al (2014) Zinc and cadmium hyperaccumulation act as deterrents towards specialist herbivores and impede the performance of a generalist herbivore. *New Phyt* 202:628–639
- Keenan TF, Niinemets Ü (2016) Global leaf trait estimates biased due to plasticity in the shade. *Nat Plants* 3:16201
- Kerkhoff AJ, Fagan WF, Elser JJ, Enquist BJ (2006) Phylogenetic and growth form variation in the scaling of nitrogen and phosphorus in the seed plants. *Am Nat* 168:E103–E122
- Kraft NJ, Valencia R, Ackerly DD (2008) Functional traits and niche-based tree community assembly in an Amazonian forest. *Science* 322:580–582
- Kraft NJ, Godoy O, Levine JM (2015) Plant functional traits and the multidimensional nature of species coexistence. *PNAS* 112:797–802
- Küpper H, Andresen E (2016) Mechanisms of metal toxicity in plants. *Metallomics* 8:269–285
- Lalnunzira C, Brearley FQ, Tripathi SK (2019) Root growth dynamics during recovery of tropical mountain forest in North-east India. *J Mount Sci* 16:2335–2347
- Lange B, van der Ent A, Baker AJM et al (2017) Copper and cobalt accumulation in plants: a critical assessment of the current state of knowledge. *New Phyt* 213:537–551
- Laughlin DC, Joshi C, Richardson SJ et al (2015) Quantifying multimodal trait distributions improves trait-based

- predictions of species abundances and functional diversity. *J Veg Sci* 26:46–57
- Letten AD, Ke P-J, Fukami T (2017) Linking modern coexistence theory and contemporary niche theory. *Ecol Monogr* 87: 161–177
- Levin SA, Muller-Landau HC (2000) The emergence of diversity in plant communities. *C R Acad Sci III* 323:129–139
- Levine JM, HilleRisLambers J (2009) The importance of niches for the maintenance of species diversity. *Nature* 461:254–257
- Liu K, Niu Y, Konishi M et al (2017) Discovery of nitrate–CPK–NLP signalling in central nutrient–growth networks. *Nature* 545:311
- Lopez S, Benizri E, Erskine PD et al (2019) Biogeochemistry of the flora of Weda Bay, Halmahera Island (Indonesia) focusing on nickel hyperaccumulation. *J Geochem Explor* 202: 113–127
- MacArthur R, Levins R (1967) The limiting similarity, convergence, and divergence of coexisting species. *Am Nat* 101: 377–385
- Magallón S, Gómez-Acevedo S, Sánchez-Reyes LL, Hernández-Hernández T (2015) A metacalibrated time-tree documents the early rise of flowering plant phylogenetic diversity. *New Phyt* 207:437–453
- Marks CO, Lechowicz MJ (2006) Alternative designs and the evolution of functional diversity. *Am Nat* 167:55–66
- Masunaga T, Kubota D, Hotta M, Wakatsuki T (1998) Mineral composition of leaves and bark in aluminum accumulators in a tropical rain forest in Indonesia. *J Soil Sci Plant Nutr* 44: 347–358
- Metali F, Salim KA, Burslem DFRP (2012) Evidence of foliar aluminium accumulation in local, regional and global datasets of wild plants. *New Phyt* 193:637–649
- Metali F, Salim KA, Tennakoon K, Burslem DFRP (2015) Controls on foliar nutrient and aluminium concentrations in a tropical tree flora: phylogeny, soil chemistry and interactions among elements. *New Phyt* 205:280–292
- Meunier CL, Malzahn AM, Boersma M (2014) A new approach to homeostatic regulation: towards a unified view of physiological and ecological concepts. *PLoS One* 9:e107737
- Meunier CL, Boersma M, El-Sabaawi R et al (2017) From elements to function: toward unifying ecological stoichiometry and trait-based ecology. *Front Environ Sci* 5:18
- Mohiley A, Tielbörger K, Seifan M, Gruntman M (2020) The role of biotic interactions in determining metal hyperaccumulation in plants. *Funct Ecol* 34:658–668
- Moore E (2011) Serpentinities and other ultramafic rocks. In: *Serpentine: The evolution and ecology of a model system*. University of California Press, Berkeley, pp 3–28
- Niu K, Zhang S, Lechowicz MJ (2020) Harsh environmental regimes increase the functional significance of intraspecific variation in plant communities. *Funct Ecol* 34:1666–1677
- Ooms J, Chamberlain S, Webb CO et al (2018) phylocomr: Interface to ‘Phylocom’. R package version 010. Retrieved from <https://CRAN.R-project.org/package=phylocomr>
- Parker GA, Maynard Smith J (1990) Optimality theory in evolutionary biology. *Nature* 348:27
- Peng J-S, Guan Y-H, Lin X-J et al (2020) Comparative understanding of metal hyperaccumulation in plants: a mini-review. *Environ Geochem Health*: <https://doi.org/10.1007/s10653-020-00533-2>
- Peñuelas J, Fernández-Martínez M, Ciais P et al (2019) The bioelements, the elementome, and the biogeochemical niche. *Ecology* 100:e02652
- Pinheiro J, Bates D, DebRoy S et al (2017) nlme: Linear and nonlinear mixed effects models. R package version 3.1: Retrieved from <https://CRAN.R-project.org/package=nlme>
- Pollard AJ, Reeves RD, Baker AJ (2014) Facultative hyperaccumulation of heavy metals and metalloids. *Plant Sci* 217:8–17
- Porder S, Ramachandran S (2013) The phosphorus concentration of common rocks—a potential driver of ecosystem P status. *Plant Soil* 367:41–55
- R Core Team (2019) R: A language and environment for statistical computing. R Foundation for Statistical Computing, Vienna
- Rahbek C, Borregaard MK, Antonelli A et al (2019) Building mountain biodiversity: geological and evolutionary processes. *Science* 365:1114–1119
- Reeves RD, Baker AJM, Borhidi A, Berazain R (1999) Nickel hyperaccumulation in the serpentine flora of Cuba. *Ann Bot* 83:29–38
- Roumet C, Birouste M, Picon-Cochard C et al (2016) Root structure–function relationships in 74 species: evidence of a root economics spectrum related to carbon economy. *New Phyt* 210:815–826
- Sardans J, Peñuelas J (2013) Tree growth changes with climate and forest type are associated with relative allocation of nutrients, especially phosphorus, to leaves and wood. *Global Ecol Biogeogr* 22:494–507
- Sinha V, Pakshirajan K, Chaturvedi R (2018) Chromium tolerance, bioaccumulation and localization in plants: an overview. *J Environ Manage* 206:715–730
- Stark J, Lehman R, Crawford L et al (2017) Does environmental heterogeneity drive functional trait variation? A test in montane and alpine meadows. *Oikos* 126:1650–1659
- Thompson K, Parkinson JA, Band SR, Spencer RE (1997) A comparative study of leaf nutrient concentrations in a regional herbaceous flora. *New Phyt* 136:679–689
- Trethowan LA, Eiserhardt WL, Girmansyah D et al (2020) Floristics of forests across low nutrient soils in Sulawesi, Indonesia. *Biotropica* 52:1309–1318
- Tripler CE, Kaushal SS, Likens GE, Todd Walter M (2006) Patterns in potassium dynamics in forest ecosystems. *Ecol Lett* 9:451–466
- Tuah SJ, Jamal YM, Limin SH (2003) Nutritional characteristics in leaves of plants native to tropical peat swamps and heath forests of Central Kalimantan, Indonesia. *Tropics* 12:221–245
- Turner BL, Brenes-Arguedas T, Condit R (2018) Pervasive phosphorus limitation of tree species but not communities in tropical forests. *Nature* 555:367–370
- Umaña MN, Swenson NG (2019) Intraspecific variation in traits and tree growth along an elevational gradient in a subtropical forest. *Oecologia* 191:153–164
- Umaña MN, Mi X, Cao M et al (2017a) The role of functional uniqueness and spatial aggregation in explaining rarity in trees. *Global Ecol Biogeogr* 26:777–786
- Umaña MN, Zhang C, Cao M et al (2017b) A core-transient framework for trait-based community ecology: an example from a tropical tree seedling community. *Ecol Lett* 20:619–628

- Utteridge TMA, Bramley G (2015) Tropical plant families identification handbook, 2nd edn. Royal Botanic Gardens, Kew, Richmond
- van der Ent A, Baker AJM, Reeves RD et al (2013a) Hyperaccumulators of metal and metalloid trace elements: facts and fiction. *Plant Soil* 362:319–334
- van der Ent A, Baker AJM, van Balgooy MMJ, Tjoa A (2013b) Ultramafic nickel laterites in Indonesia (Sulawesi, Halmahera): mining, nickel hyperaccumulators and opportunities for phytomining. *J Geochem Explor* 128:72–79
- van der Ent A, Mak R, de Jonge MD, Harris HH (2018a) Simultaneous hyperaccumulation of nickel and cobalt in the tree *Glochidion cf. sericeum* (Phyllanthaceae): elemental distribution and chemical speciation. *Sci Rep* 8:9683
- van der Ent A, Mulligan DR, Repin R, Erskine PD (2018b) Foliar elemental profiles in the ultramafic flora of Kinabalu Park (Sabah, Malaysia). *Ecol Res* 33:659–674
- Verboom GA, Stock WD, Cramer MD (2017) Specialization to extremely low-nutrient soils limits the nutritional adaptability of plant lineages. *Am Nat* 189:684–699
- Violle C, Thuiller W, Mouquet N et al (2017) Functional rarity: the ecology of outliers. *Tree* 32:356–367
- Volf M, Segar ST, Miller SE et al (2018) Community structure of insect herbivores is driven by conservatism, escalation and divergence of defensive traits in *Ficus*. *Ecol Lett* 21:83–92
- Webb CO, Donoghue MJ (2005) Phylomatic: tree assembly for applied phylogenetics. *Mol Ecol Notes* 5:181–183
- Wehrens R, Mevik B-H (2007) The pls package: principal component and partial least squares regression in R. *J Stat Softw* 18:2
- Worthy SJ, Laughlin DC, Zambrano J et al (2020) Alternative designs and tropical tree seedling growth performance landscapes. *Ecology* 101:e03007
- Wright IJ, Reich PB, Westoby M et al (2004) The worldwide leaf economics spectrum. *Nature* 428:821–827
- Yuan ZY, Chen HY, Reich PB (2011) Global-scale latitudinal patterns of plant fine-root nitrogen and phosphorus. *Nat Commun* 2:344
- Zemunik G, Davies SJ, Turner BL (2018) Soil drivers of local-scale tree growth in a lowland tropical forest. *Ecology* 99: 2844–2852

Publisher's note Springer Nature remains neutral with regard to jurisdictional claims in published maps and institutional affiliations.