

CAMPCITIES

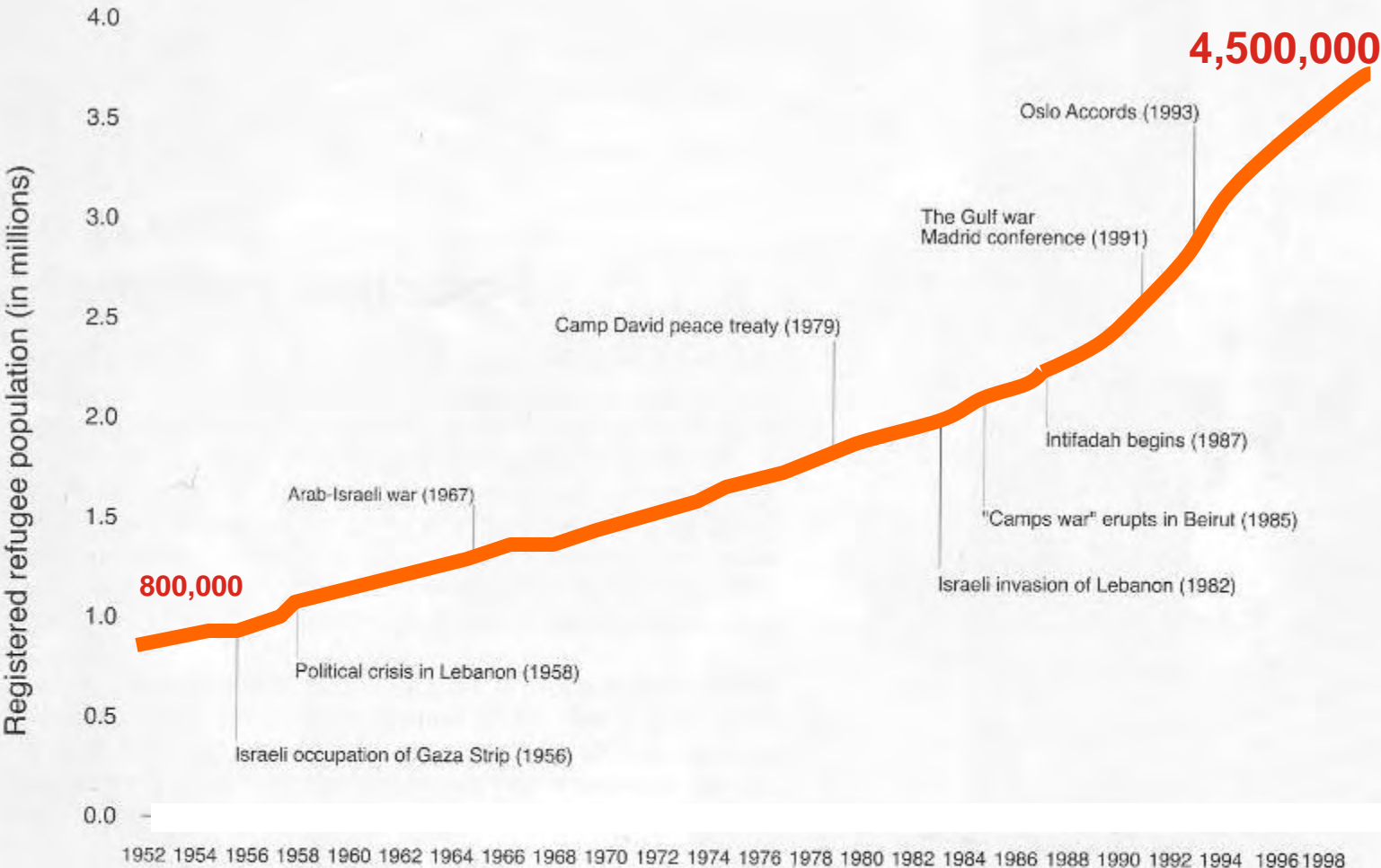
**The ambiguous reality of
Palestinian refugee camps
between urbanisation and
humanitarian emergency**

10/04/2007

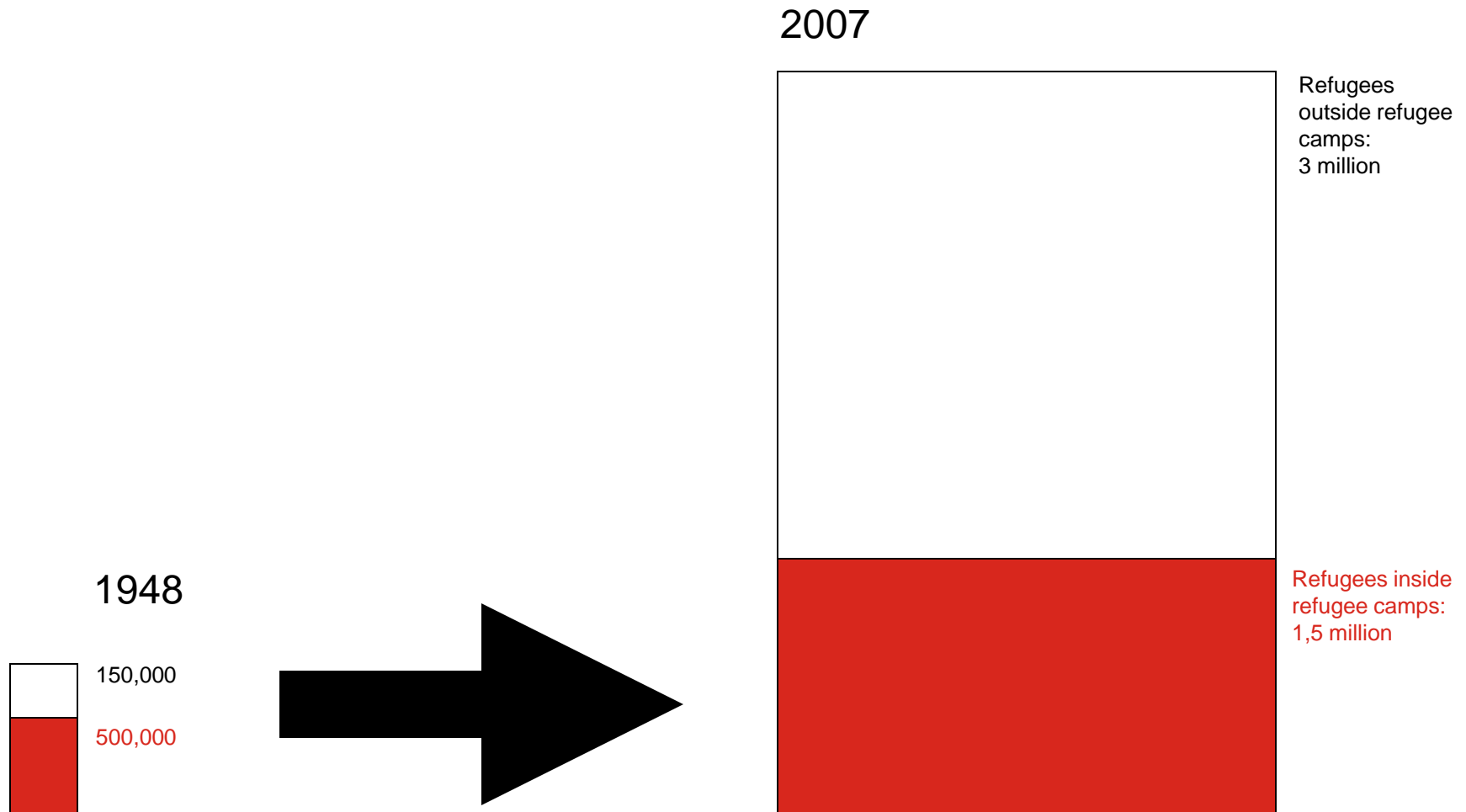
1. the origin of the refugee crisis: refugee camps in the Middle East



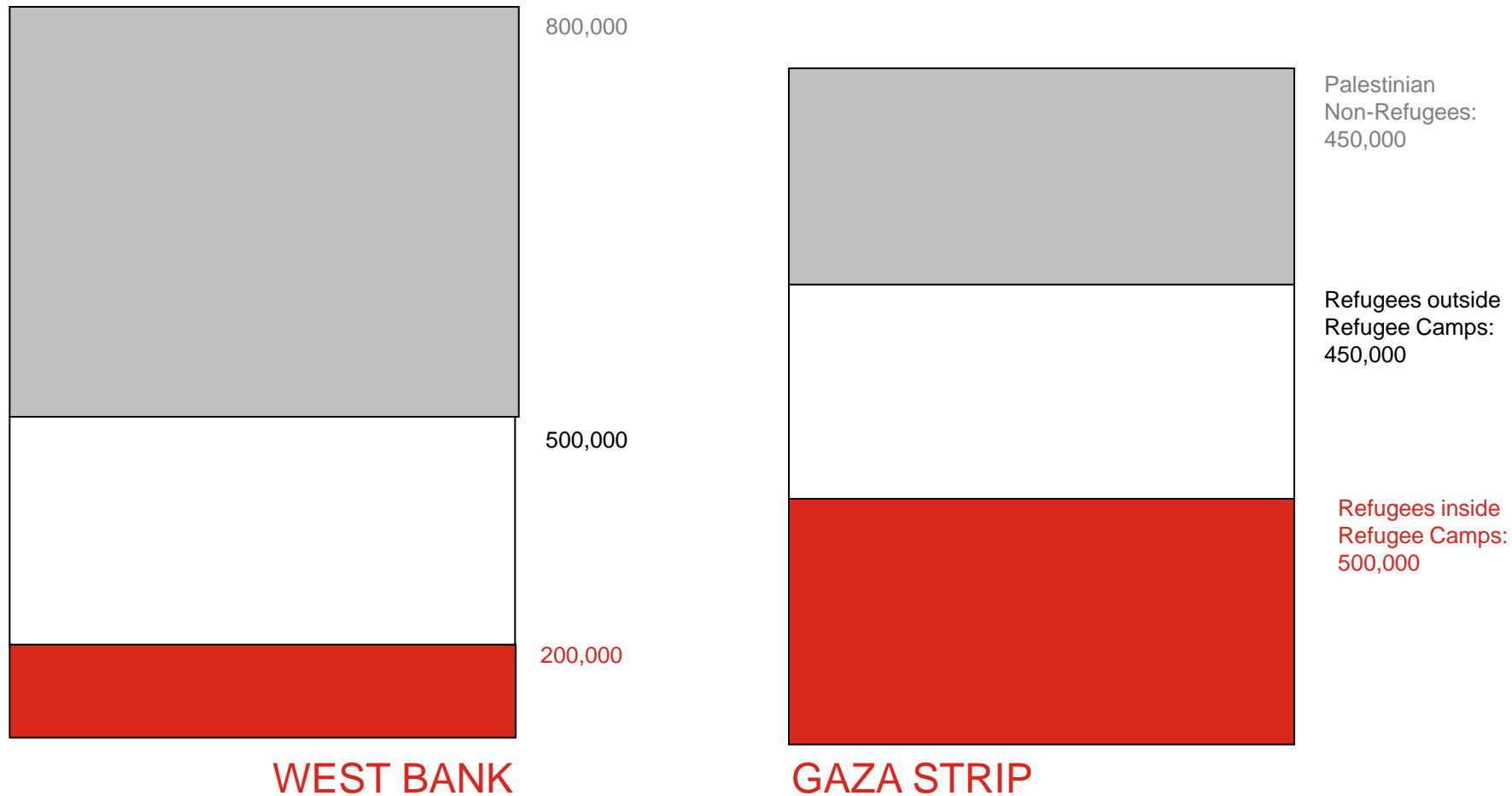
A growing population: UNRWA's officially registered refugees



Refugee population structure: registered refugees in camps



Refugee population structure: refugees inside and outside camps



-
1. **the origin of the refugee crisis:** refugee camps in the Middle East
 2. ***campcities* as ambiguous sites:** urbanisation vs. areas of exception







9 10:38AM





بازار
ترکیب زجا

بازار
بازار

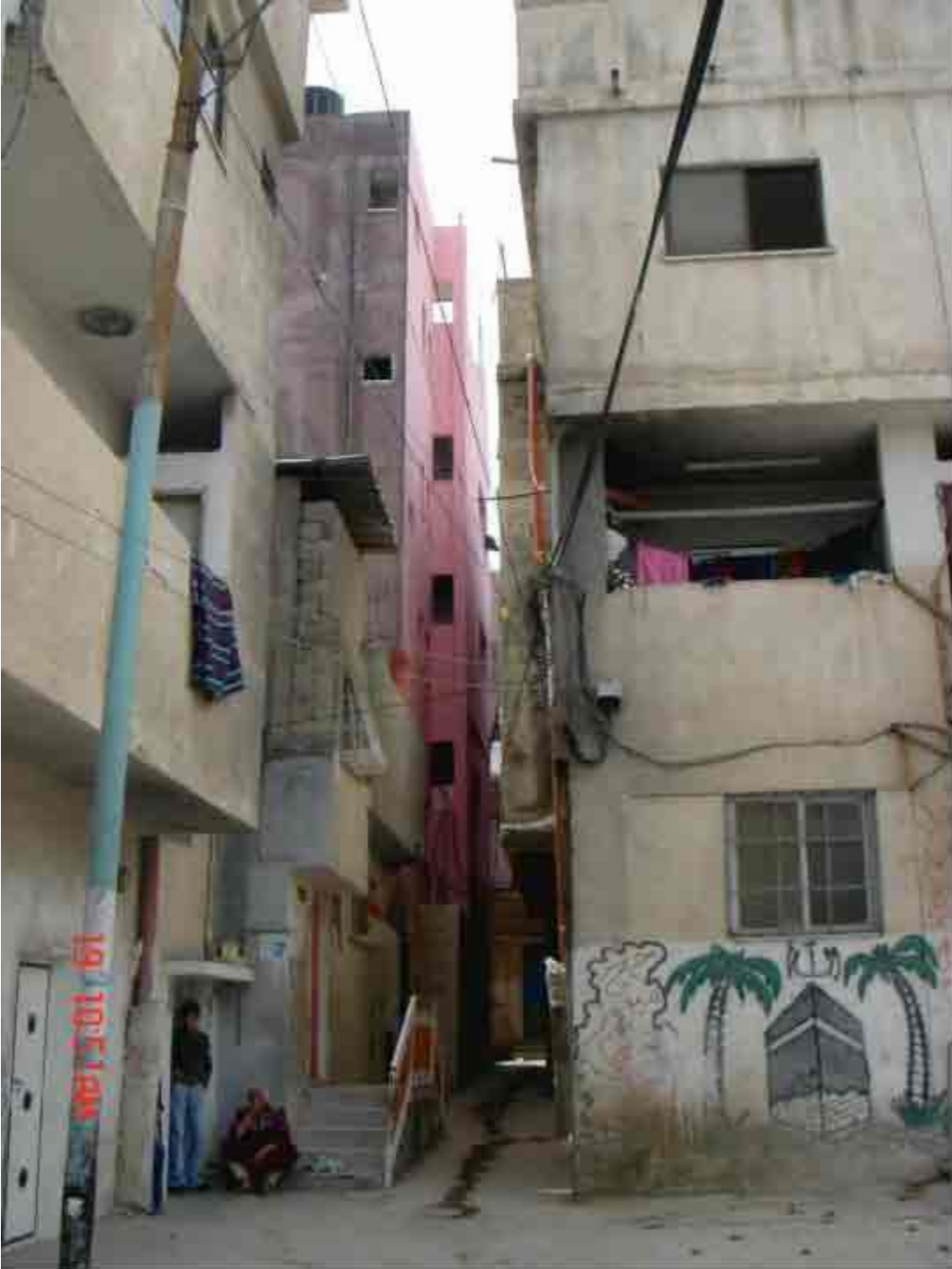






19 10:35 AM











لوفنتان
أ
ار

أه يا بلادي بلادي
عاشت القلافة
البيضة الشعبية

عاشتنا الأكرام
اللام
يا كفاغ







9 1:00PM

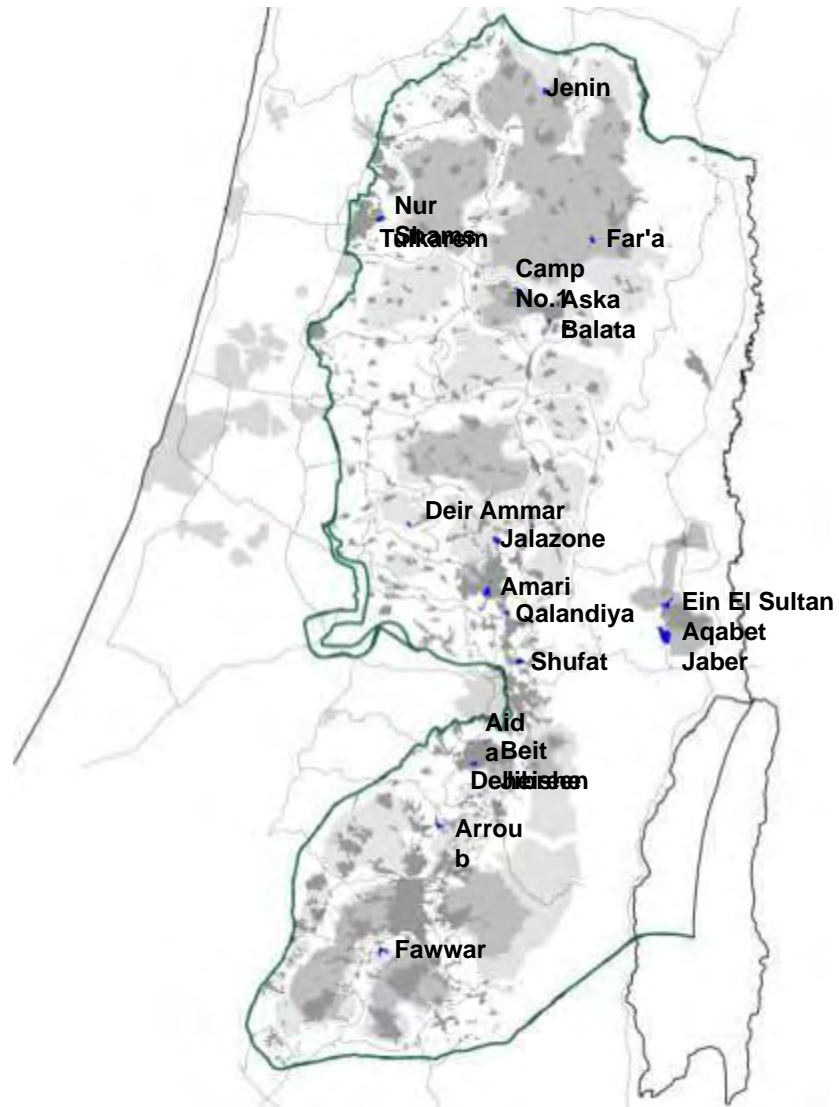


9 1:01PM



-
1. **the origin of the refugee crisis:** refugee camps in the Middle East
 2. ***campcities* as ambiguous sites:** urbanisation vs. areas of exception
 3. **camp locations in West Bank:** urban, sub-urban and rural context
-

The Region: Location of West Bank Camps



■ refugee camp

■ Palestinian built up area

— Green Line



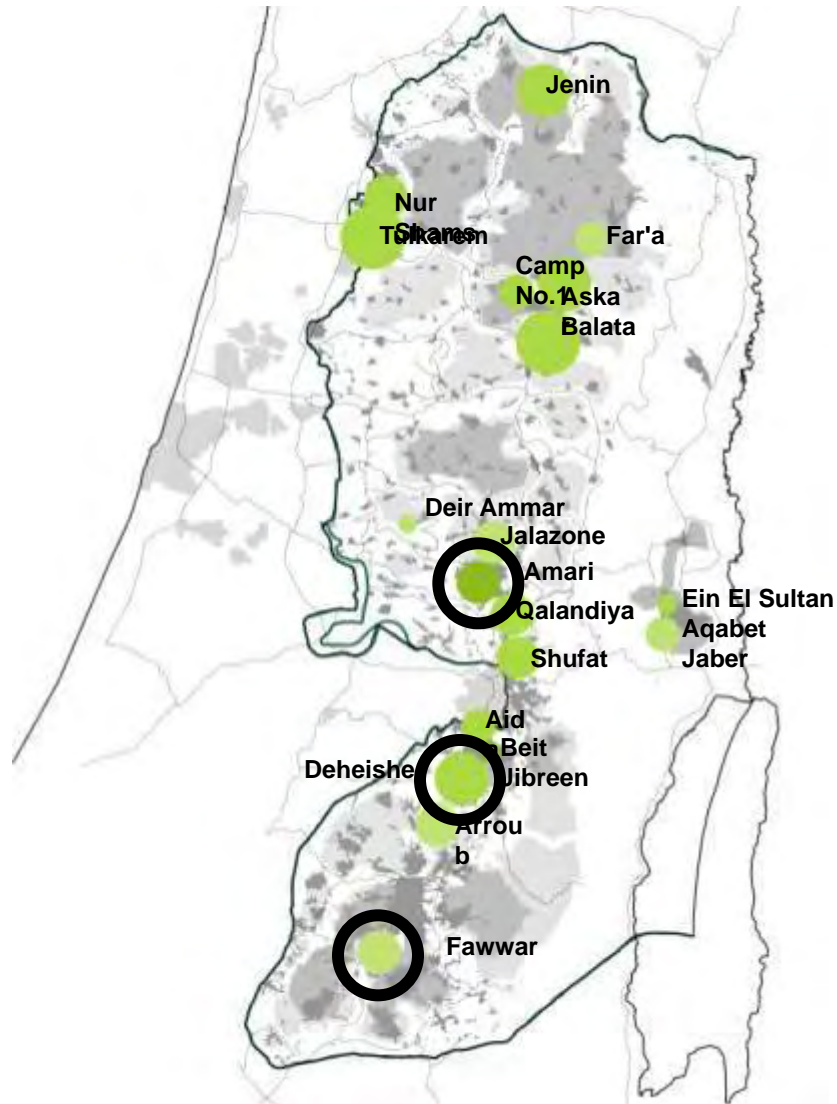








Context typologies: selection of three case studies



- urban context (2)
- suburban context (11)
- rural context (6)

urban context

urban edge/ suburban

rural

Urban Location: Amari within Al Bireh Municipality



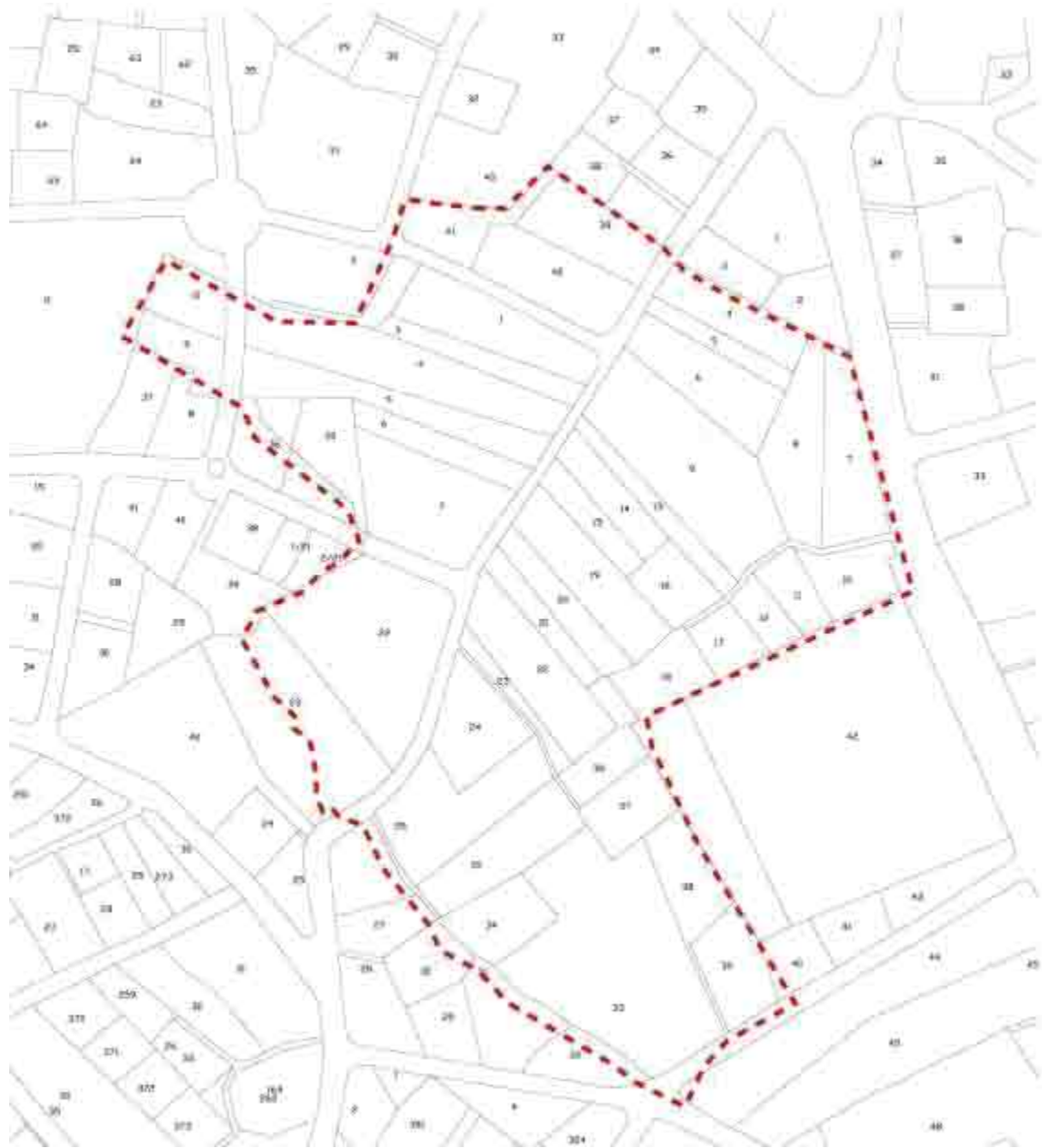
Sub-urban Location: Deheishe next to Bethlehem, Beit Jala, Doha, Artas



Rural Location: Al Fawwar



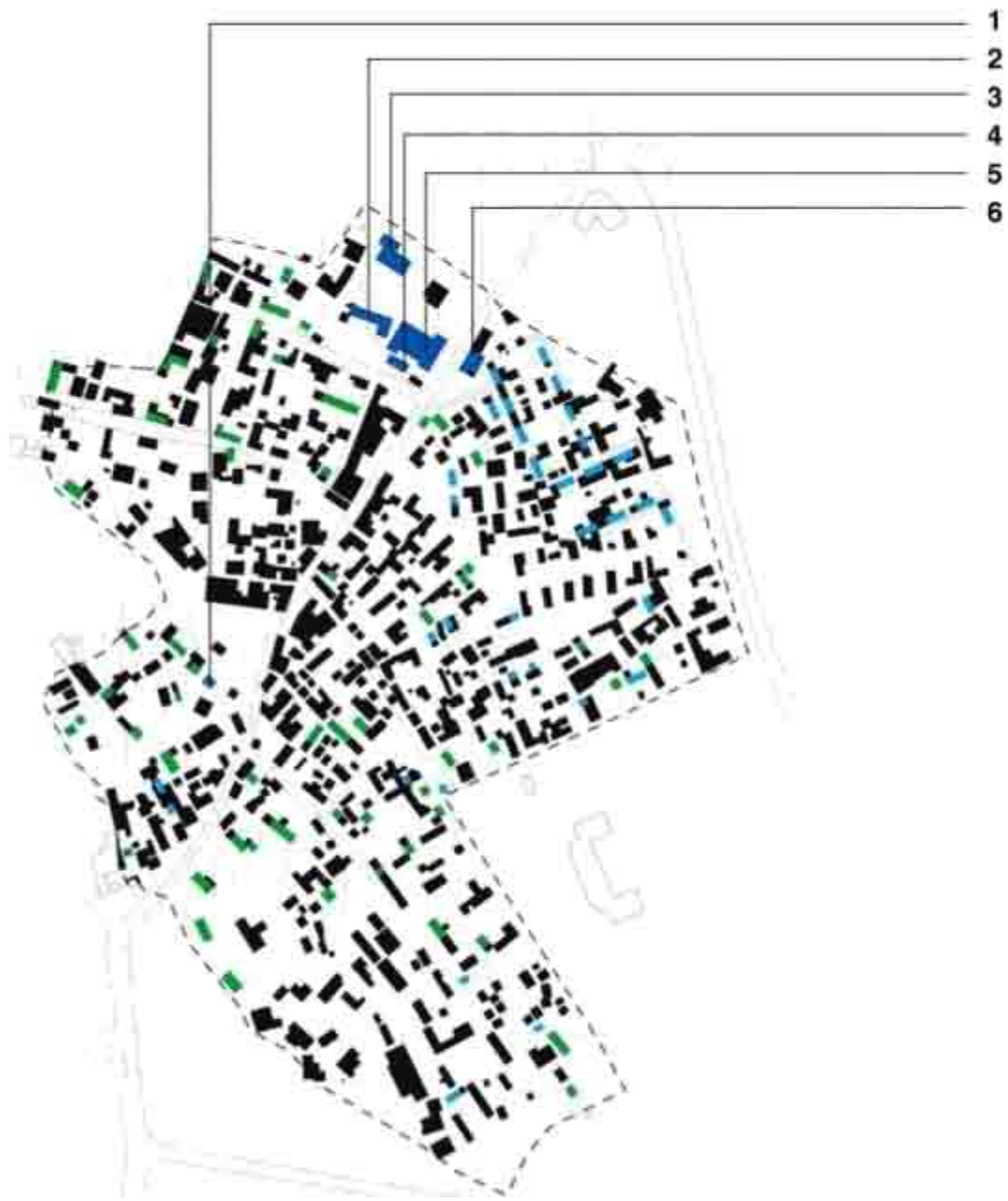
-
1. **the origin of the refugee crisis:** refugee camps in the Middle East
 2. ***campcities* as ambiguous sites:** urbanisation vs. areas of exception
 3. **camp locations in West Bank:** urban, sub-urban and rural context
 4. **historical evolution:** horizontal growth, verticalisation, saturation
-



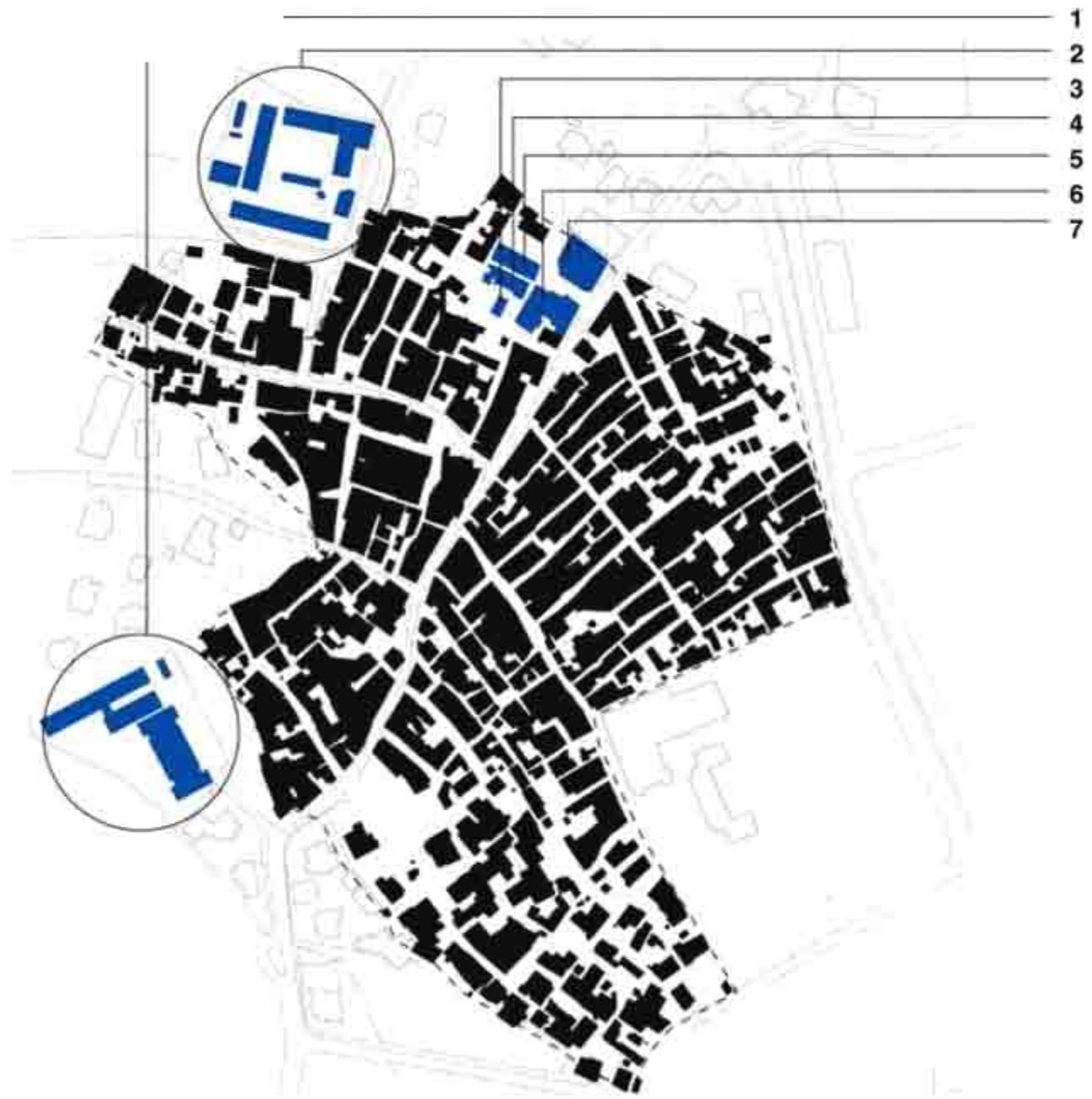










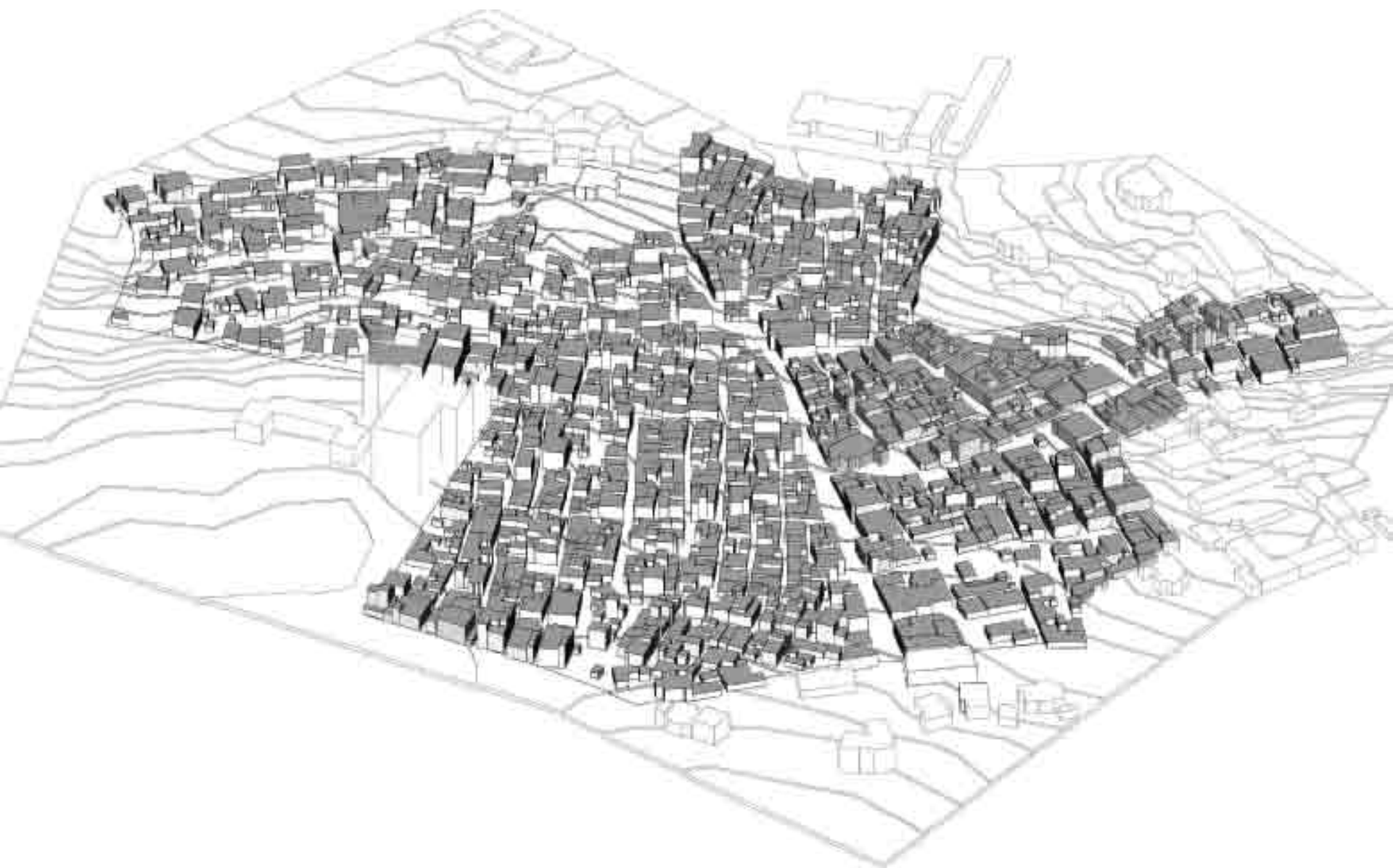


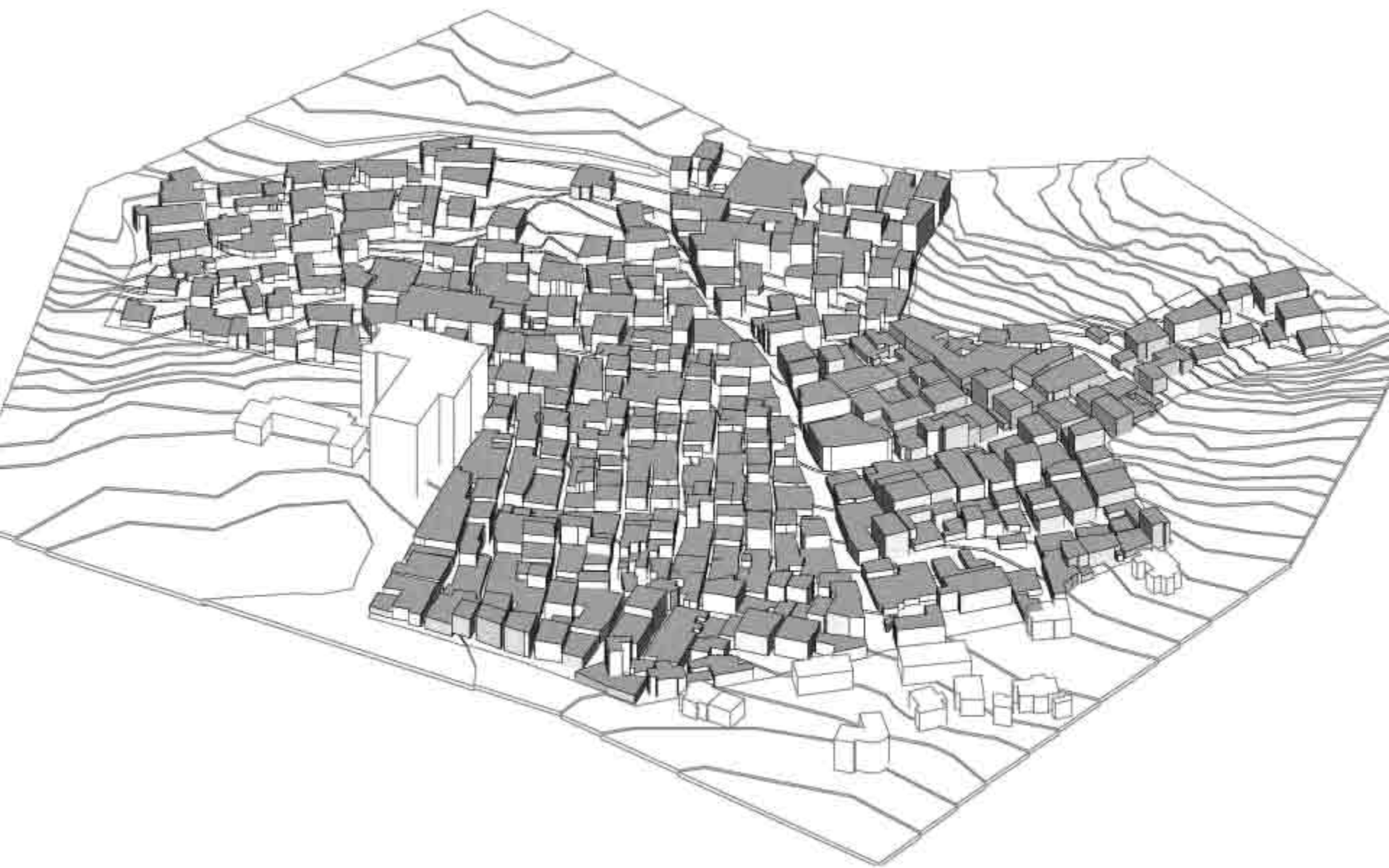
- 1
- 2
- 3
- 4
- 5
- 6
- 7









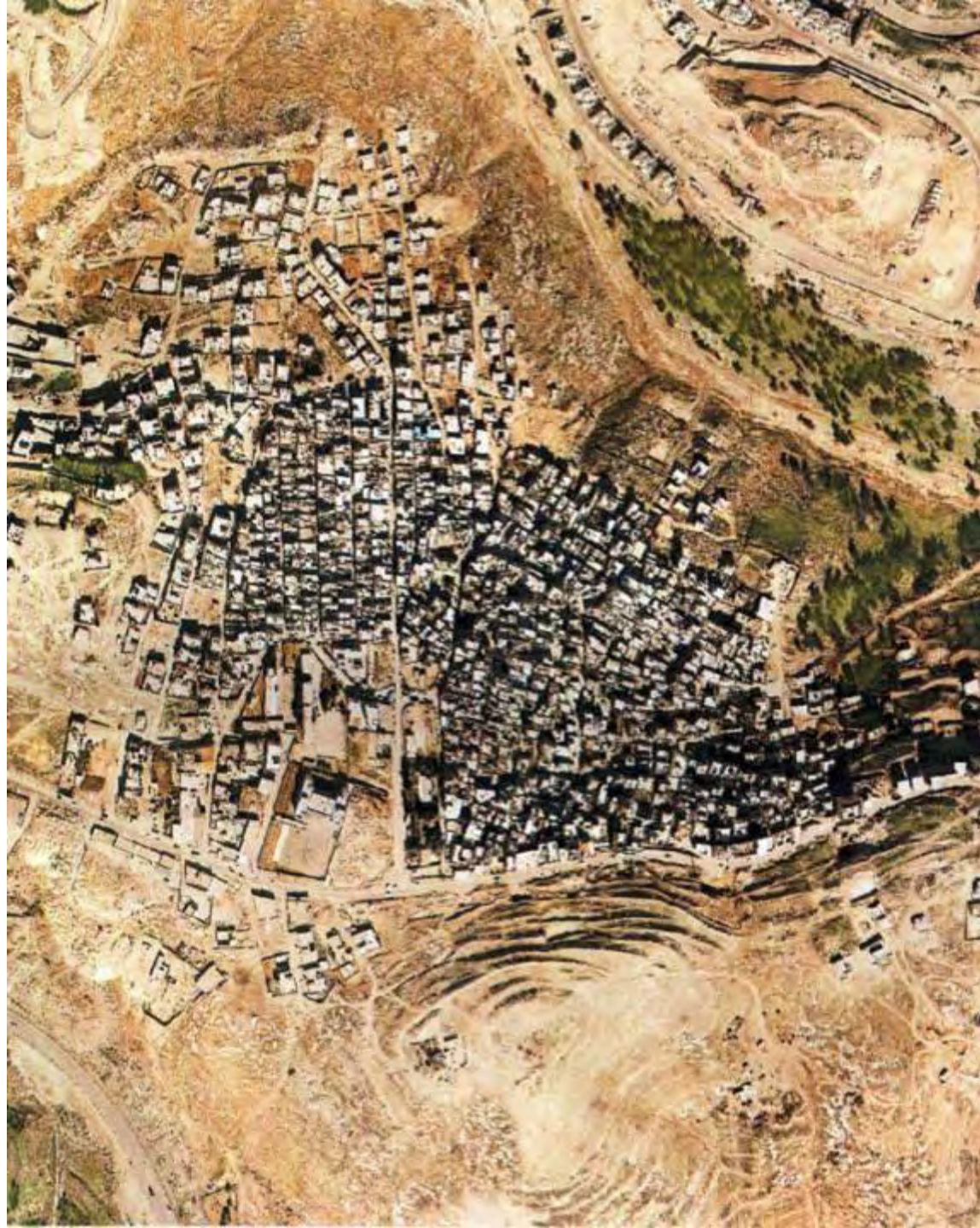




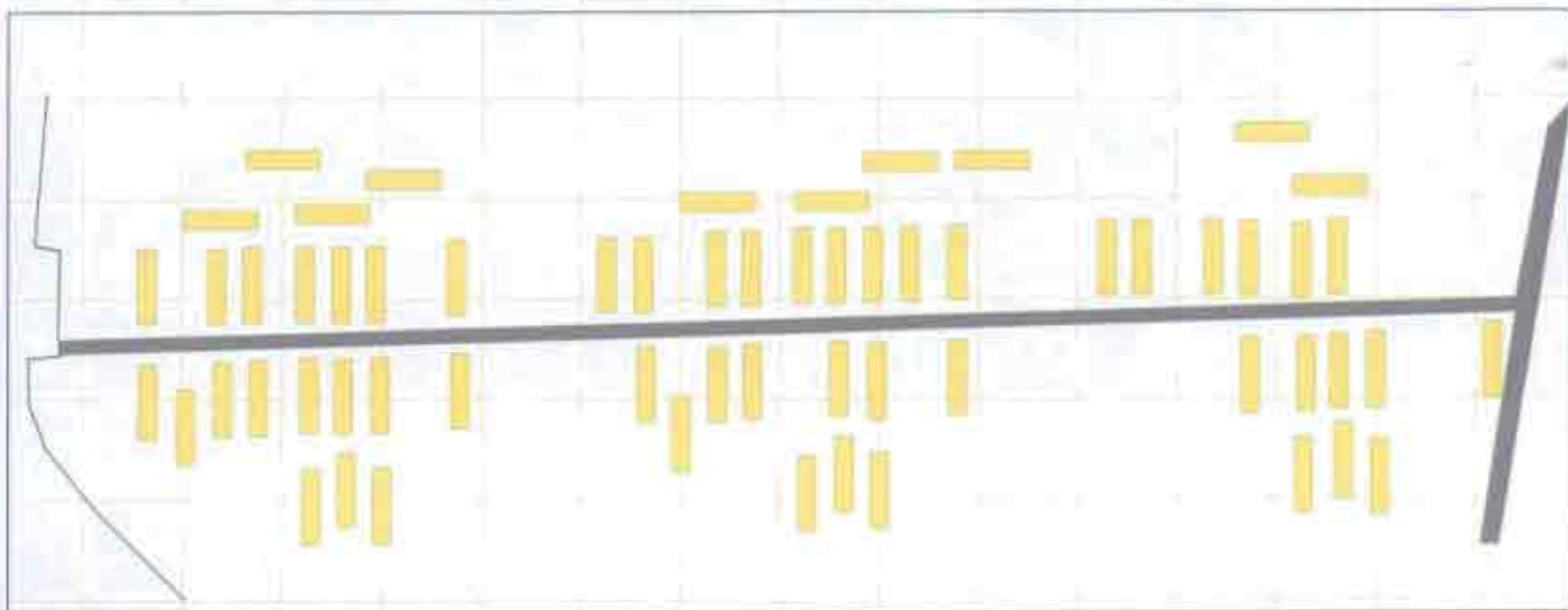
Shu'fat (1966)



Shu'fat (1980s)

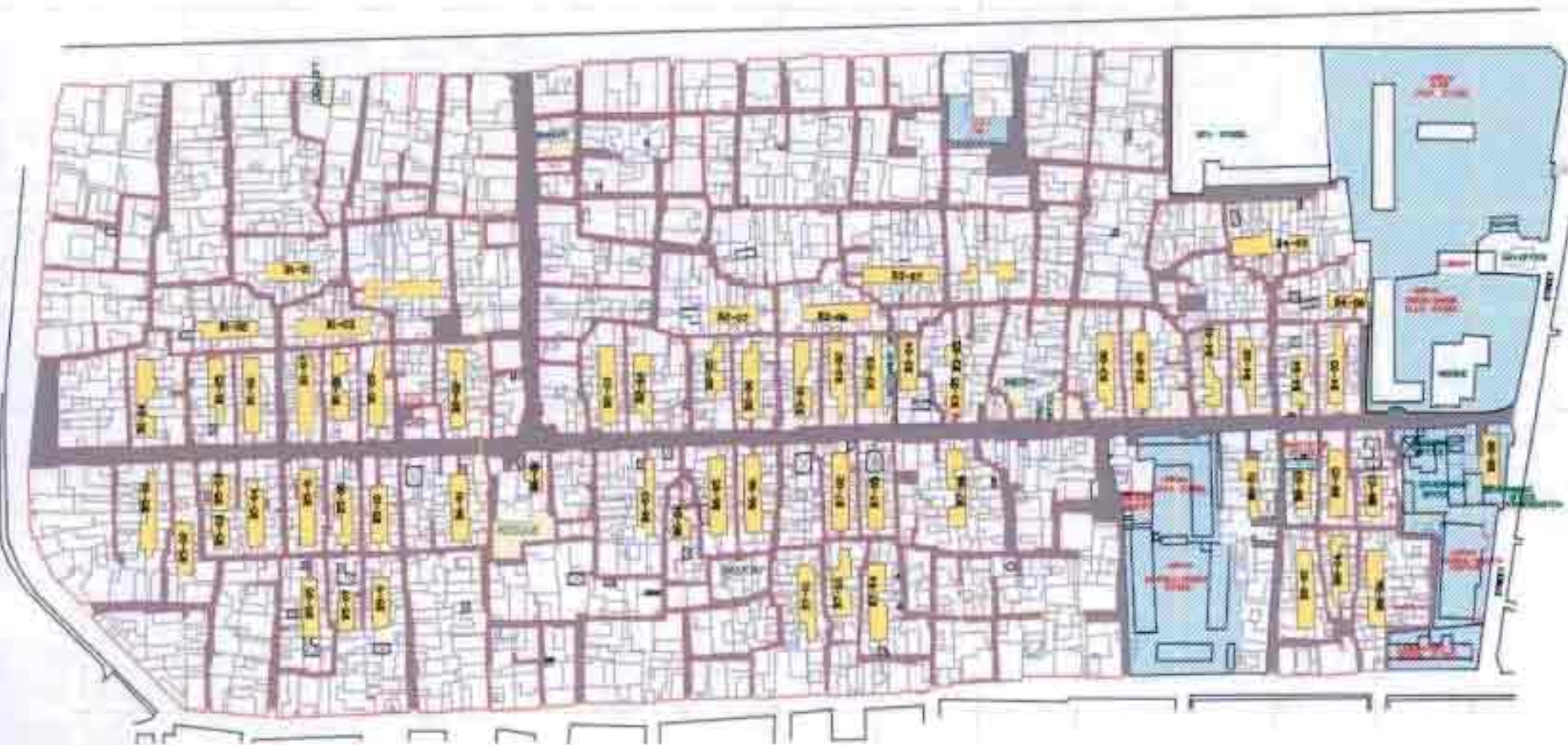


Shu'fat (2000)



Map 1 Neirab camp in 1948

 Barracks only



Map 2 Existing camp in 2003

- Original barracks
- UNRWA installations

-
1. **the origin of the refugee crisis:** refugee camps in the Middle East
 2. ***campcities* as ambiguous sites:** urbanisation vs. areas of exception
 3. **camp locations in West Bank:** urban, sub-urban and rural context
 4. **historical evolution:** horizontal growth, verticalisation, saturation
 5. **building patterns and architecture:** informal growth
-

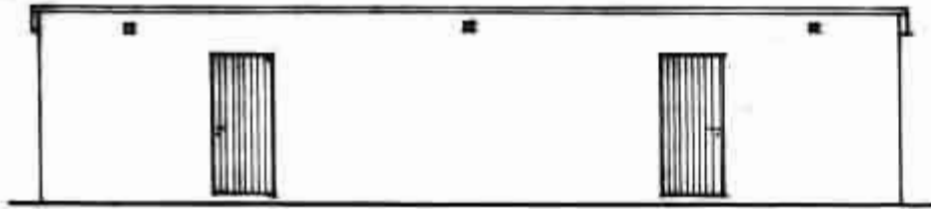




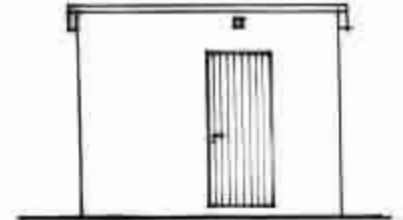




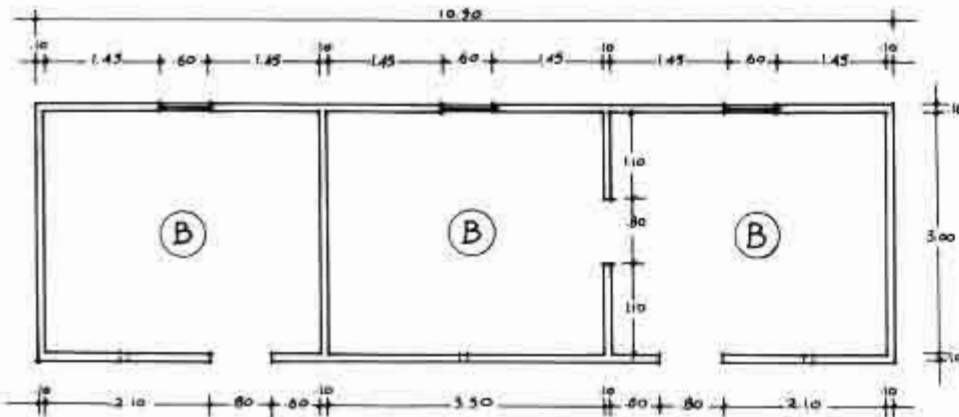




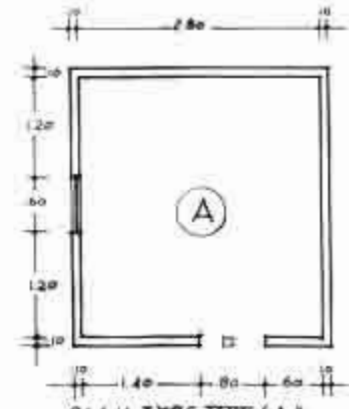
FRONT ELEVATION



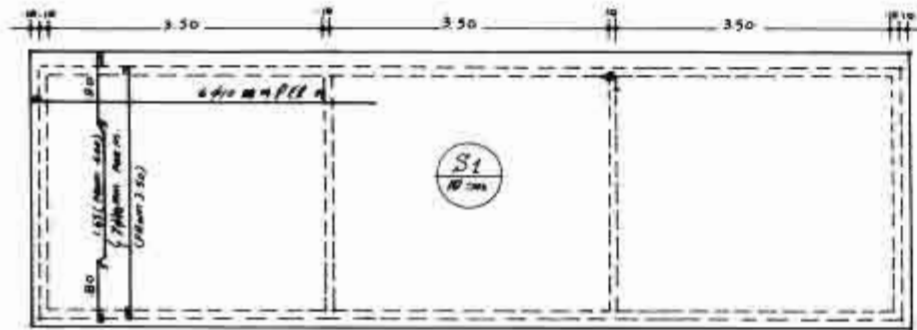
FRONT ELEVATION



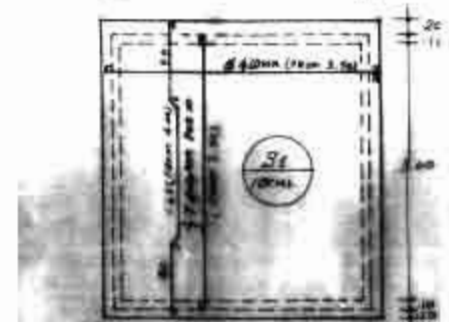
PLAN-TYPE IX (B+BB)



PLAN-TYPE VIII (A)



R.C. PLAN



Proposed Site
for Mosque







9 12:35PM



9 1:03PM





9 1:20PM





الارض للمواعيد التي تم...

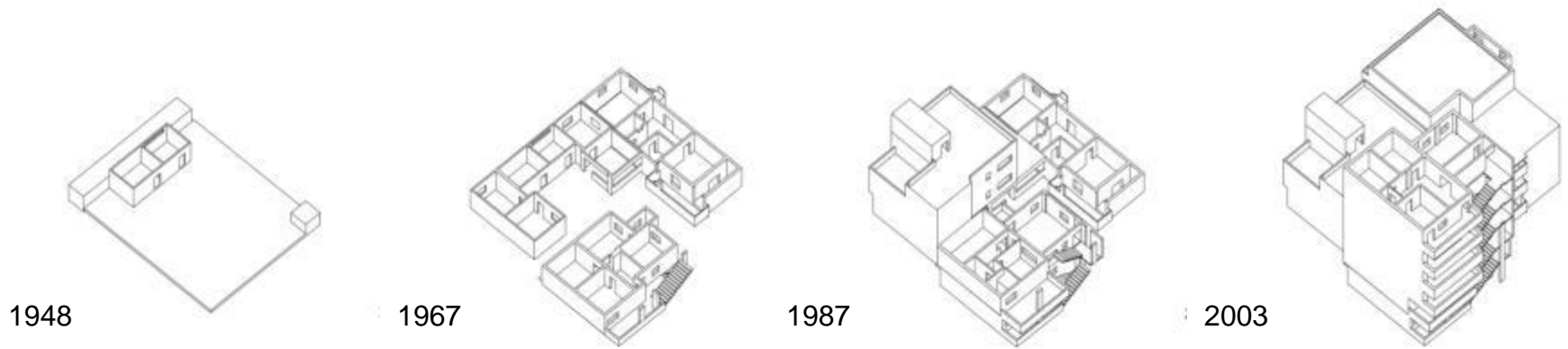
34 لارفاقه التوره الفل...







Building patterns and architecture: the growing house



1948

1967

1987

2003

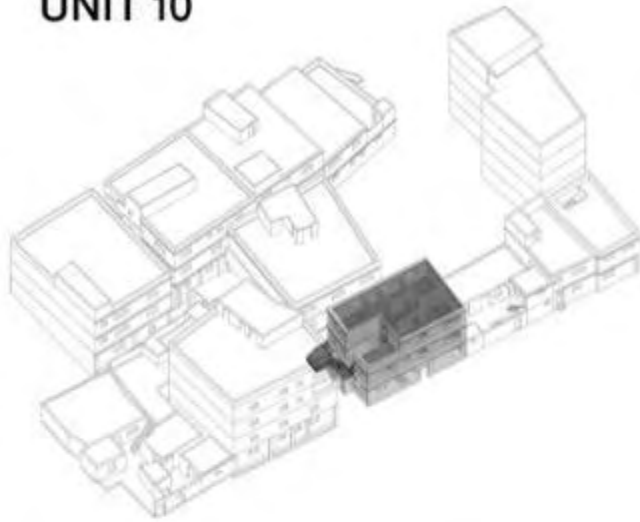
7 persons

31 persons

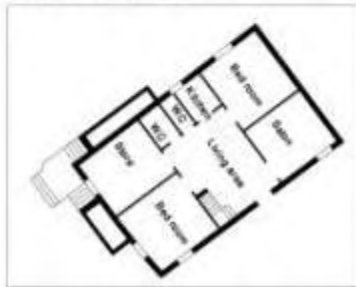


Building patterns and architecture: micro studies

UNIT 10



FLOOR 1 scale 1:200



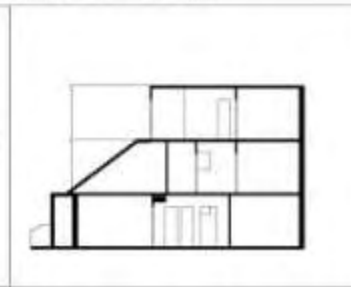
FLOOR 2 scale 1:200



FLOOR 3 scale 1:200



SECTION 1 scale 1:200



Building patterns and architecture: distribution of staircases



■ Staircase

-
1. **the origin of the refugee crisis:** refugee camps in the Middle East
 2. ***campcities* as ambiguous sites:** urbanisation vs. areas of exception
 3. **camp locations in West Bank:** urban, sub-urban and rural context
 4. **historical evolution:** horizontal growth, verticalisation, saturation
 5. **building patterns and architecture:** informal growth
 6. **relation to context:** interaction, informal spill-over and expansion
-

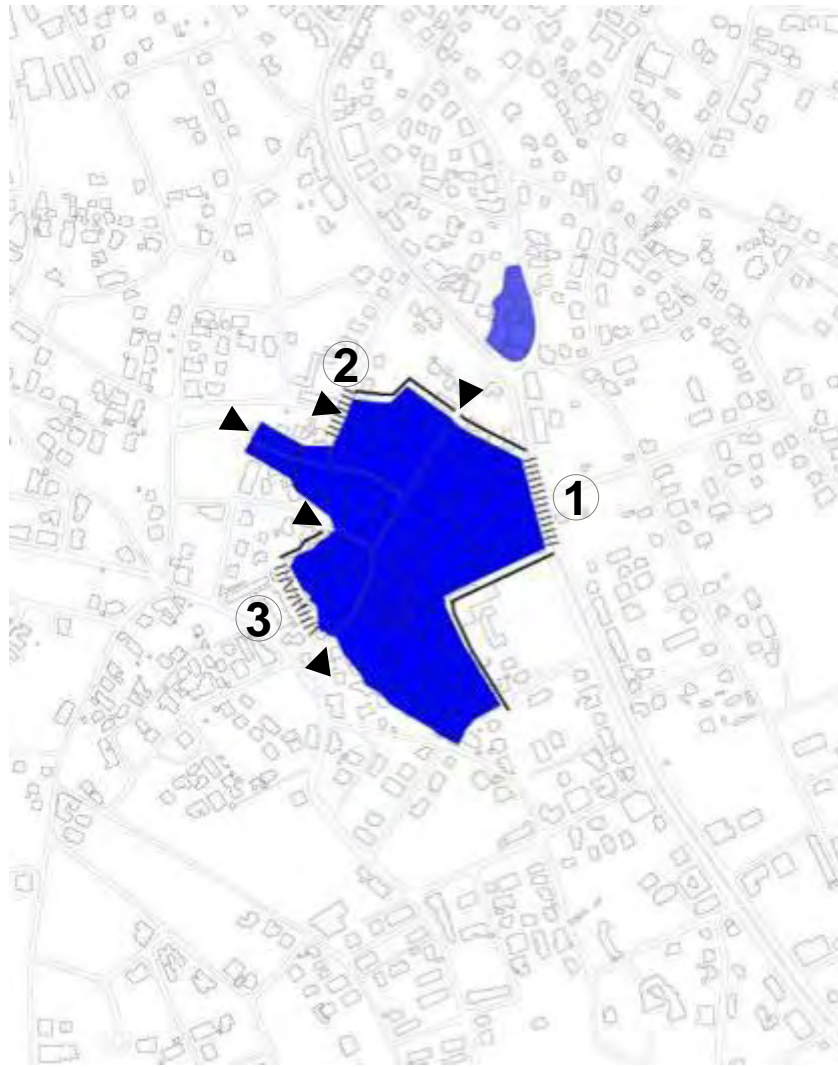
Relation to context: closed borders








Relation to context: engaged borders



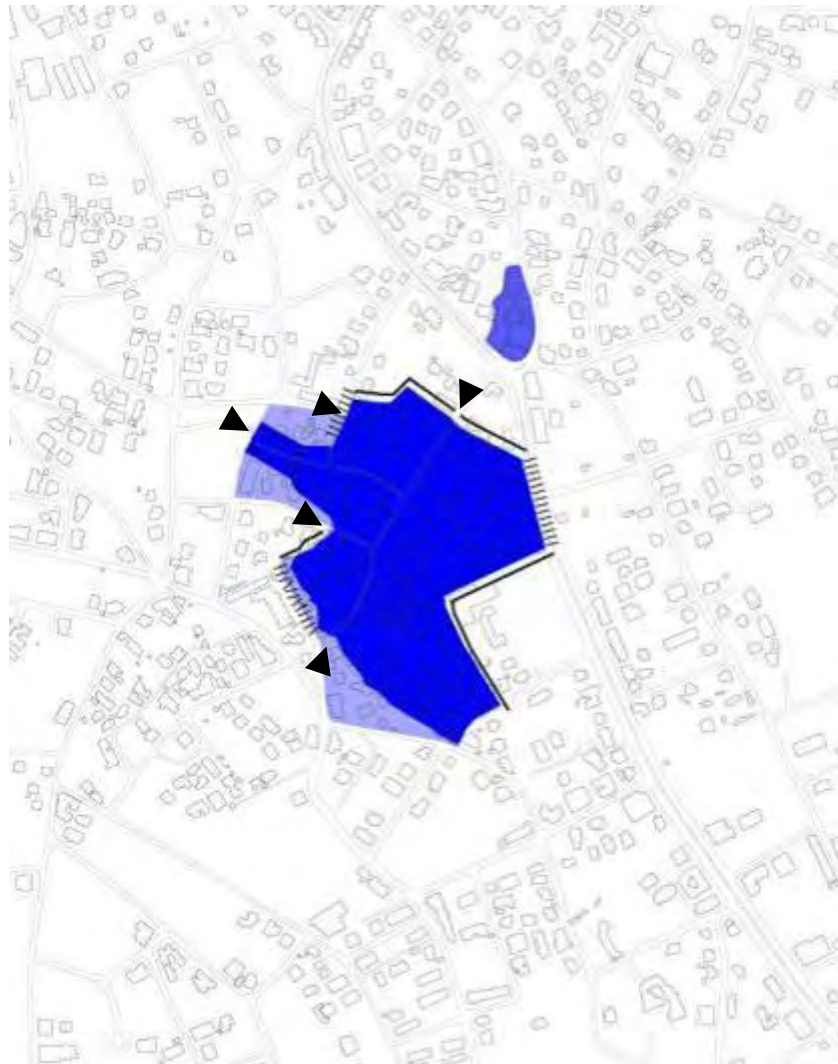
Relation to context: border zones and gates



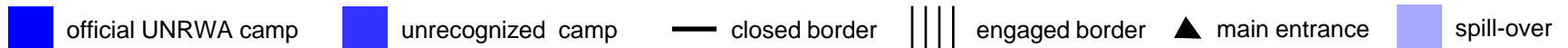
- ① Jerusalem-Nablus Road (shops, Car services)
- ② Samira Street (car services)
- ③ Western edge (black smith, car services)

 official UNRWA camp  unrecognized camp  closed border  engaged border  Main entrance

Relation to context: spill-over



spill-over: blurring
official UNRWA
boundary by extened
and self-built shelters



Relation to context: unofficial expansion



approx. 4000 people or
40 per cent of the
registered camp
community live beyond
UNRWA borders

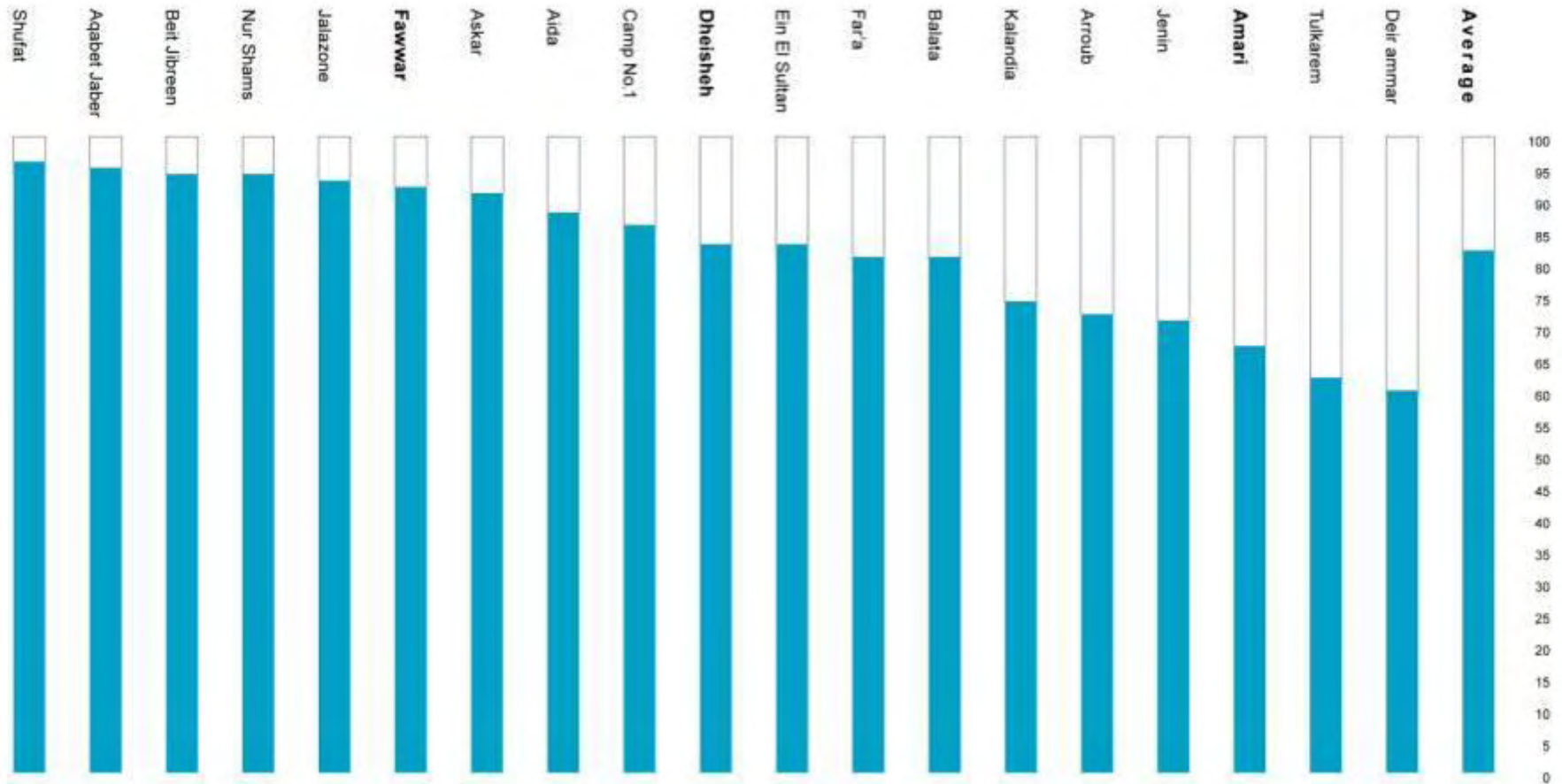
Lifa cluster



En El Sharayit

spil over

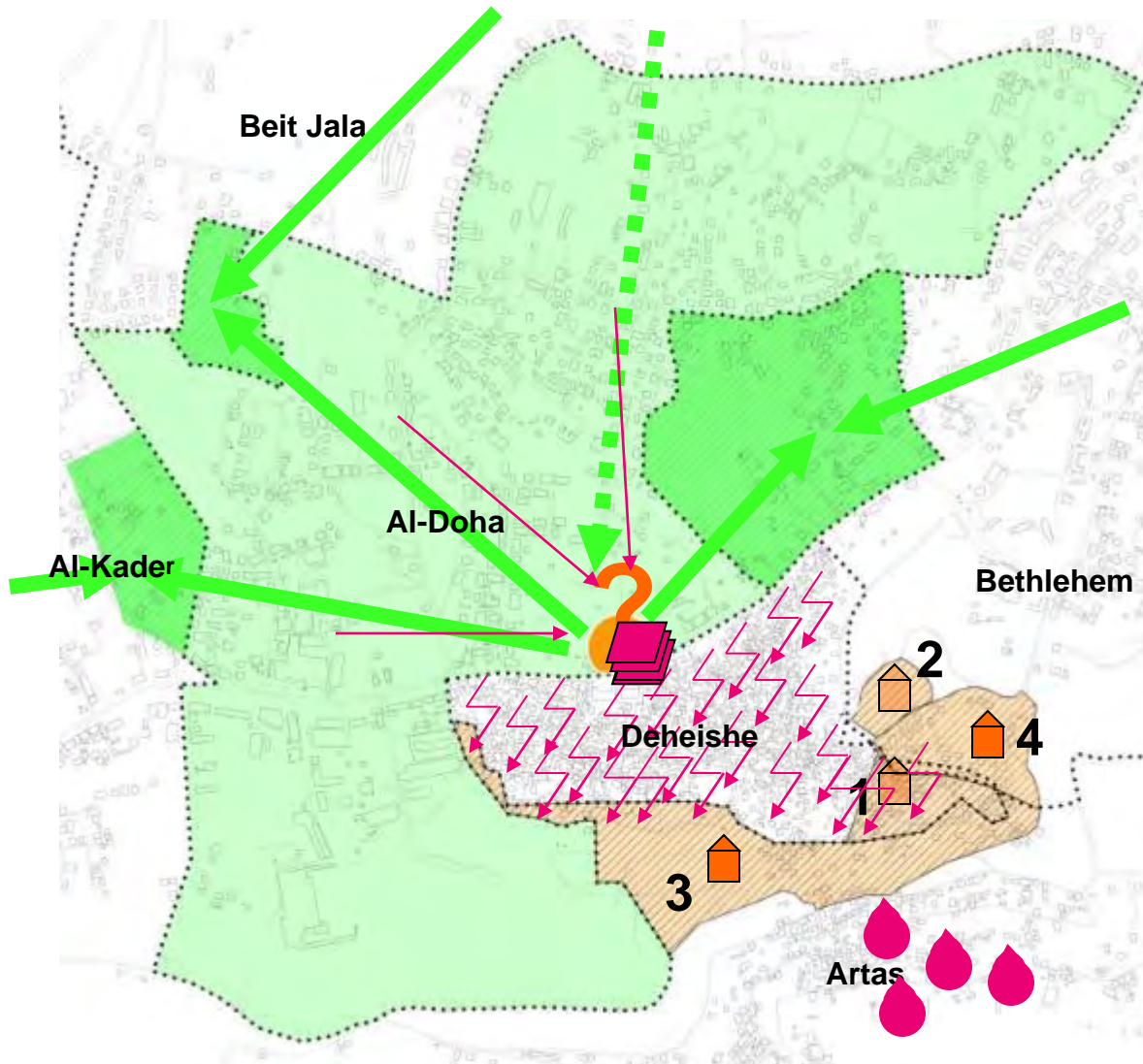
informal expansion

Relation to context: out-Migration/ unofficial expansion in West Bank



 refugee living within camp  registered refugees living outside of the camp but participating in its daily affairs/ UNRWA services

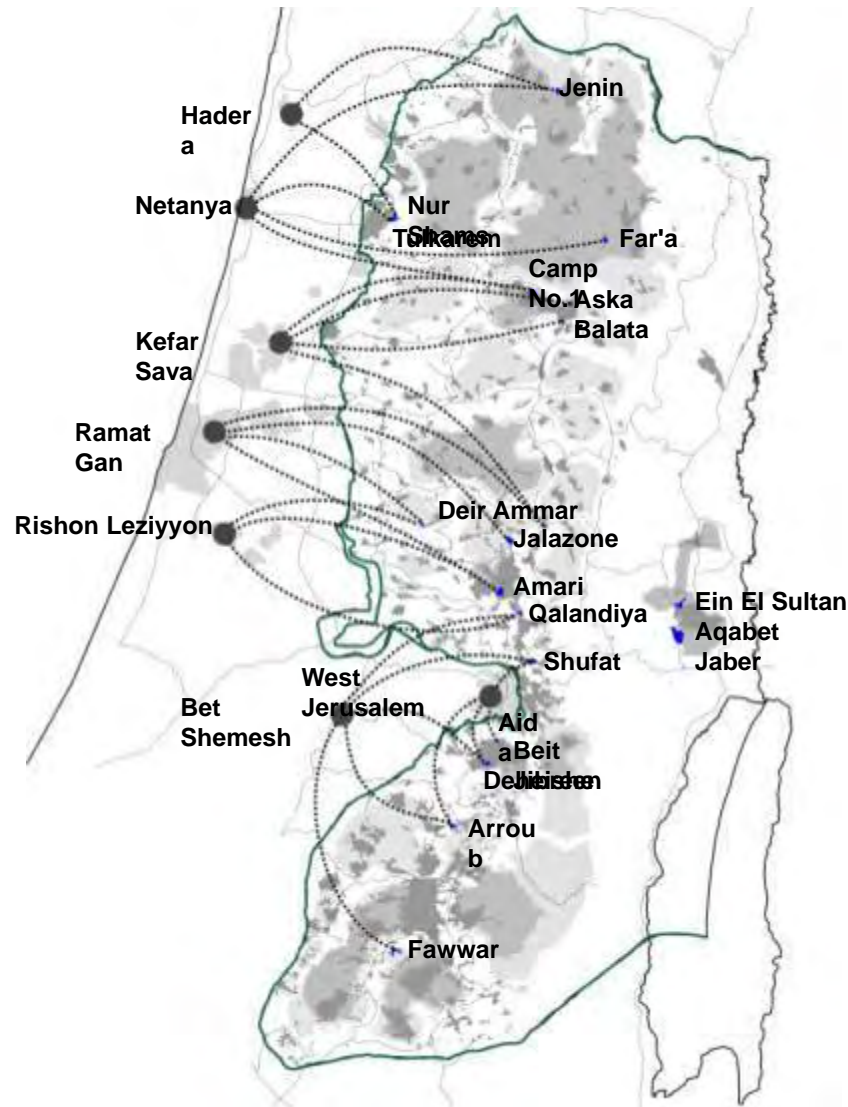
Relation to context: conflictual landscape



no formal mediating body/ structure is currently in place to facilitate the relation between camp bodies, UNRWA and external stakeholders for

- conflict negotiation
- the identification of areas of mutual interest
- the negotiation of joint initiatives or strategic visions

Relation to context: work migration until 2003/ 2004



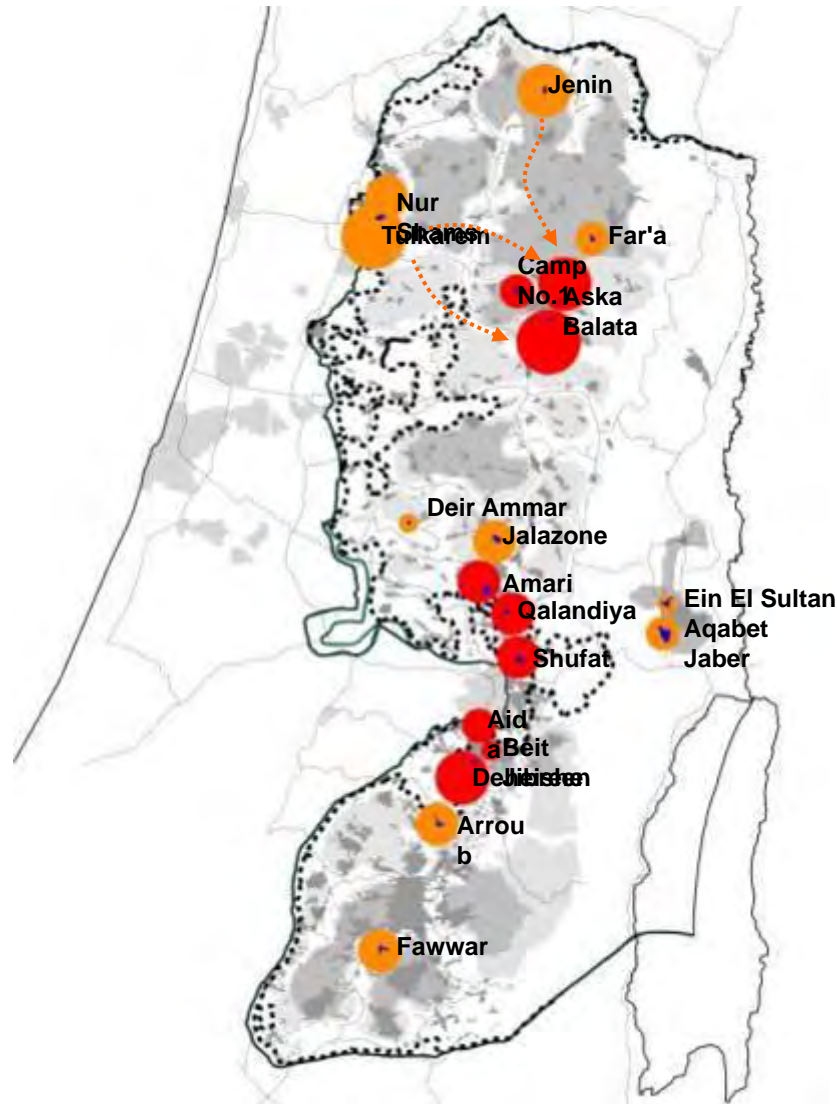
- camps as hubs for low-skilled workers in Israel: peripheral location as an advantage

- even access of work opportunities for all West Bank camps

■ Refugee Camp

● Destinations for migrant workers (e.g. industrial zones)

Relation to context: construction of separation wall/ fence



likely long term impacts for the future:

- **increase of polarisation:** more opportunities/ potentials for centrally located camps
- **possible new internal migration** towards the centre (refugees are more mobile than ordinary citizens)

● central camps

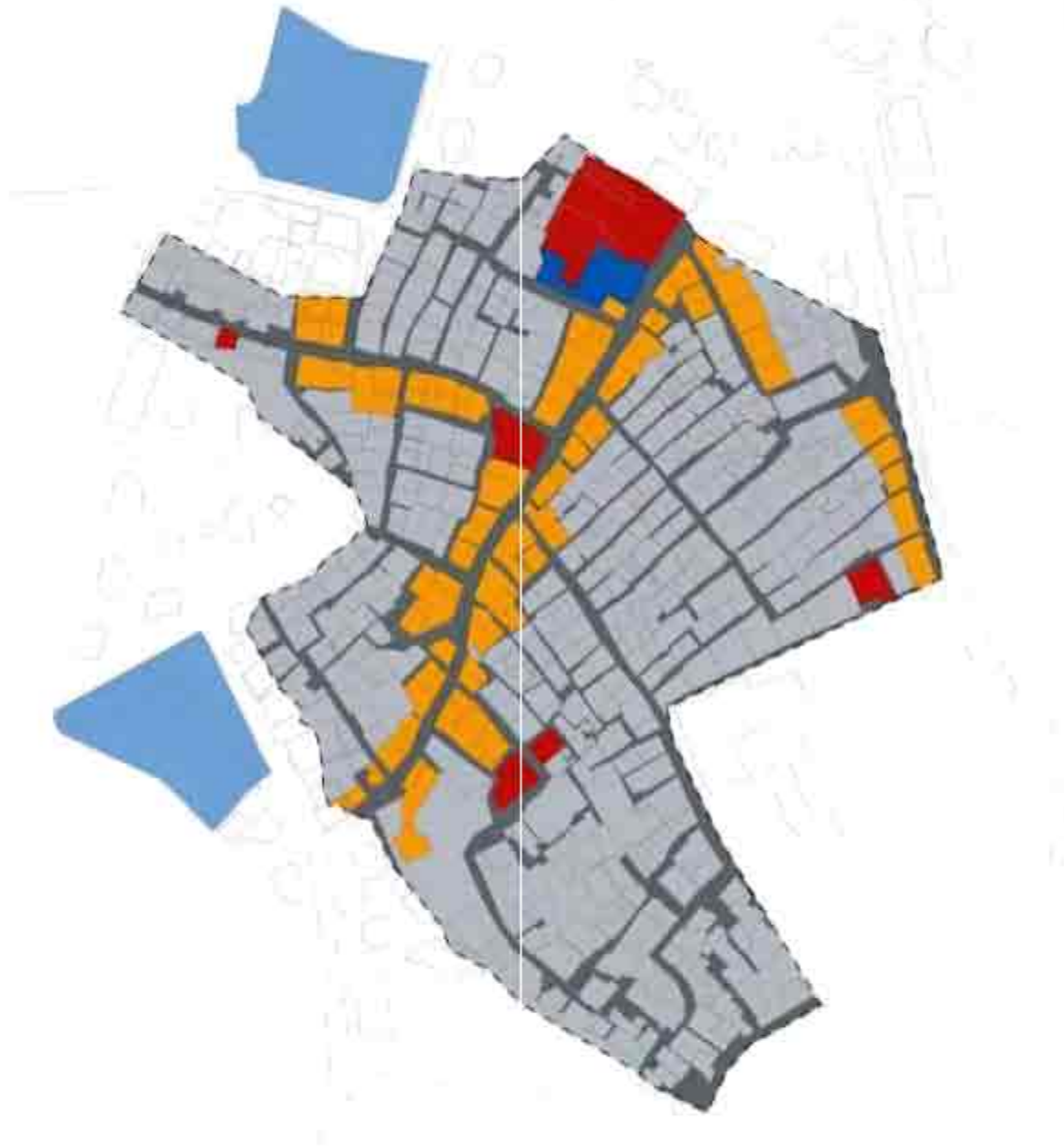
● peripheral camps

-
1. **the origin of the refugee crisis:** refugee camps in the Middle East
 2. **campcities as ambiguous sites:** urbanisation vs. areas of exception
 3. **camp locations in West Bank:** urban, sub-urban and rural context
 4. **historical evolution:** horizontal growth, verticalisation, saturation
 5. **building patterns and architecture:** informal growth
 6. **relation to context:** interaction, informal spill-over and expansion
 7. **strategic master plan:** mapping of needs, assets, potent. action areas
-



legend





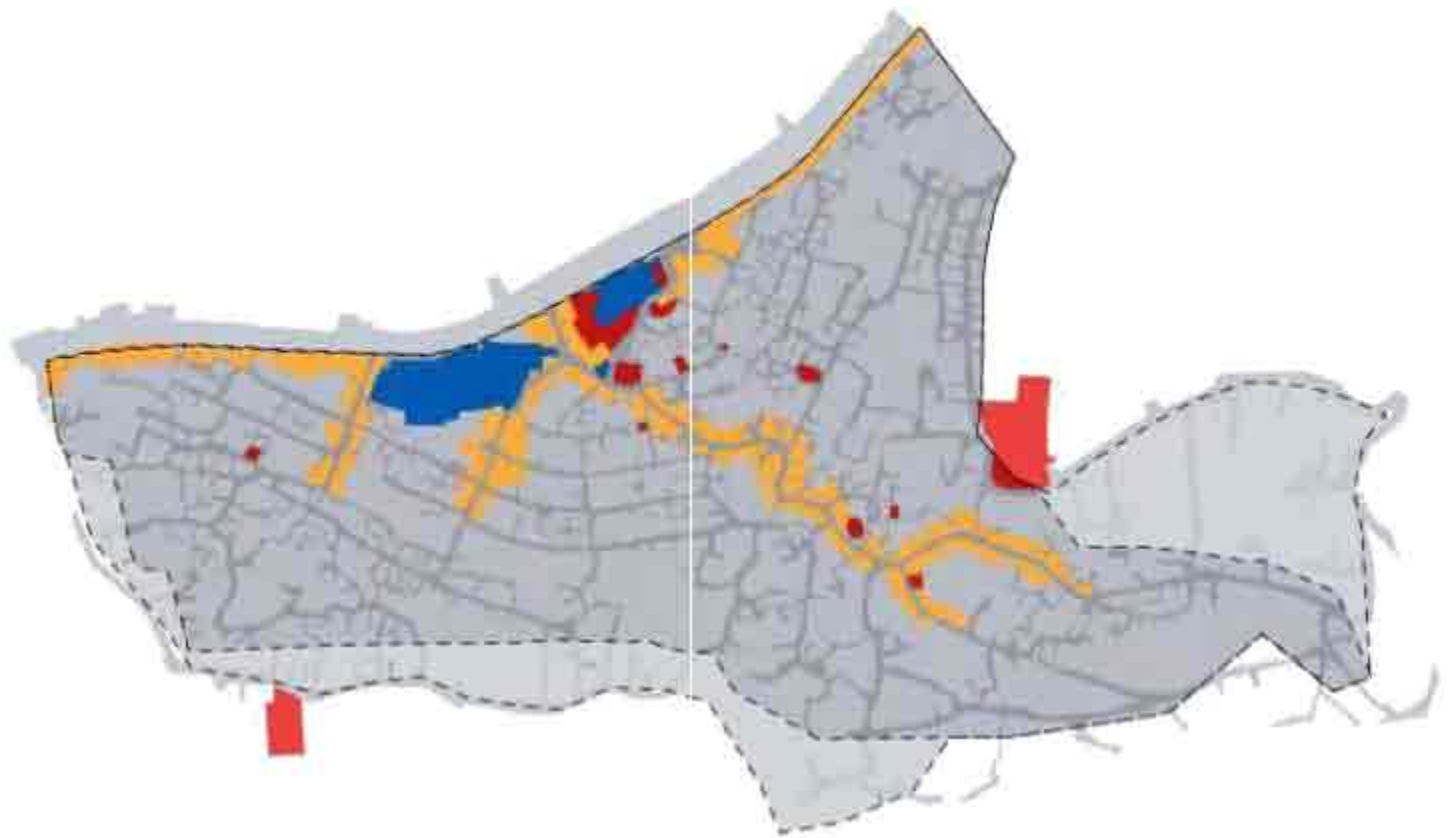
legend

- - - UNRWA's official camp boundary












legend

-  UNRWA's official camp boundary
-  UNRWA insulators inside camp boundaries
-  UNRWA open space inside camp boundaries
-  community-based organizations (CBOs)
-  CBOs open space
-  non-governmental institutions (NGOs)
-  NGOs open space
-  non-governmental institutions (NGOs)
-  NGOs open space



legend

-  UNRWA's official camp boundary
-  zone of UNRWA establishments
-  zone of institutions (CBOs, NGOs, mosques, cemetery)
-  zone of institutions (CBOs, NGOs, mosques, cemetery)
-  mixed use zone (businesses and residential)
-  residential zone
-  residential zone outside camp boundary
-  public zone (streets, public squares and parks)
-  public zone (streets, public squares and parks) outside camp boundary



legend

- UNHCR's official camp boundary
- UNHCR installations inside camp boundaries
- UNHCR open space inside camp boundaries
- community-based organisations (CBOs)
- CBOs open space
- non-governmental institutions (NGOs)
- NGOs open space
- non-governmental institutions (NGOs)



legend

- UNITWA's official camp boundary
- zone of UNITWA installations
- zone of institutions (CBOs, NGOs, mosques, cemetery)
- zone of institutions (CBOs, NGOs, mosques, cemetery)
- mixed use zone (businesses and residential)
- residential zone
- residential zone outside camp boundary
- public zone (streets, public squares and parks)



legend

- UNRWA's official camp boundary
- mixed use zone (businesses and residential)
- traders
- service providers
- entertainment (cafes, restaurants, etc.)

source: BIAAL/LRYT, 2006

Problems and needs:

lack of expansion for businesses

condition of main road

Assets and potentials:

passing traffic as business opportunity



legend

- UNRWA's official camp boundary
- UNRWA installations inside camp boundaries
- UNRWA open space inside camp boundaries
- community-based organisations (CBOs)
- CBOs open space
- non-governmental institutions (NGOs)
- NGOs open space
- mosque

Problems and needs:

dispersal of institutions
UNRWA campus as ghetto

Assets and potentials:

formation of institutional clusters
possibilities to expand



legend

- UNRWA's official camp boundary
- residential area
- businesses
- vacant shelters
- private areas (unpaved)
- private areas (paved)
- green

source: SIAAL/ LRT, 2006

Problems and needs:

- congestion
- buildings risks
- social polarisation

Assets and potentials:

- agricultural land around camp as possible zone for expansion



legend

- - UNRWA's official camp boundary
- major streets
- secondary streets
- lanes

source: SIAALJ LRT, 2006

Problems and needs:

- lack of access in some camp areas (bottle necks)
- condition of main road/ danger passing traffic
- ↔ bad road connection to expansion zones of camp

Assets and potentials:

- ▨ central agricultural zone as green zone
- external open spaces in quarter
- Hieraschical road system

-
1. **the origin of the refugee crisis:** refugee camps in the Middle East
 2. **campcities as ambiguous sites:** urbanisation vs. areas of exception
 3. **camp locations in West Bank:** urban, sub-urban and rural context
 4. **historical evolution:** horizontal growth, verticalisation, saturation
 5. **building patterns and architecture:** informal growth
 6. **relation to context:** interaction, informal spill-over and expansion
 7. **strategic master plan:** mapping of needs, assets, potent. action areas
 8. **urban accupuncture:** community driven small-scale interventions
-





البلدية
الغزة

U.N

U

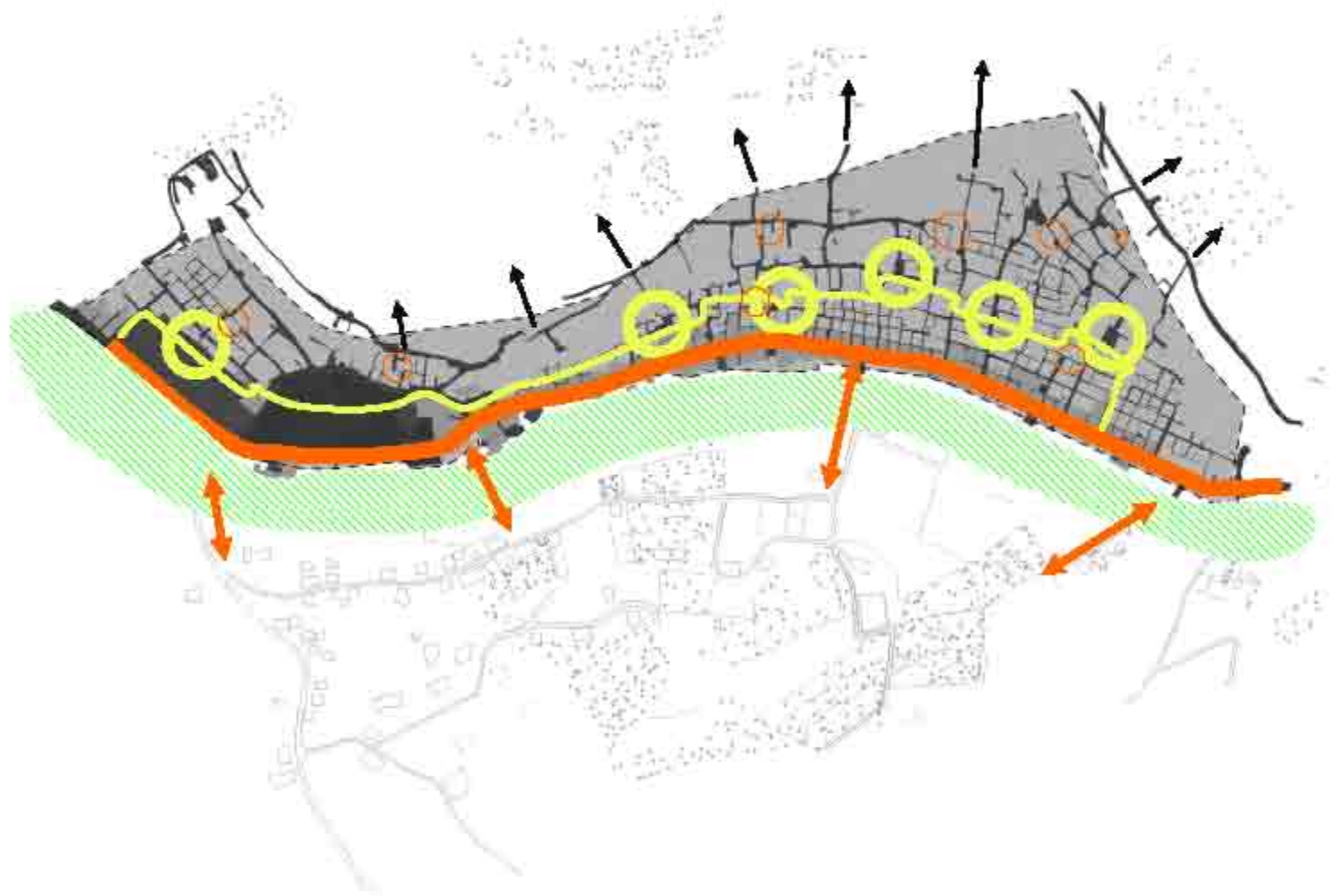




قاعة الصلاة
مكتبة
مدرسة
مركز
مجلس

بلاط
عمر





legend

- UNRWA's official camp boundary
- zone of UNRWA installations
- zone of institutions (CBDs, NGOs, mosques, cemetery)
- zone of institutions (CBDs, NGOs, mosques, cemetery)
- mixed use zone (businesses and residential)
- residential zone
- residential zone outside camp boundary
- public zone (streets, public squares and parks)