


Pump thrombosis and dynamic outflow graft compression: complications in left ventricular assist device therapy

Stephan Dobner^{1*} , Christoph Gräni¹, Beate Hugi-Mayr², Maks Mihalj², Daniel Rhyner¹, Monika Wieser¹, Michele Martinelli¹, Lukas Hunziker¹ and David Reineke²

¹Department of Cardiology, Inselspital, Bern University Hospital, University of Bern, Bern, Switzerland; ²Department of Cardiovascular Surgery, Inselspital, Bern University Hospital, University of Bern, Bern, Switzerland

Abstract

Over the past decade, left ventricular assist device (VAD) therapy has become more prevalent and increasingly safe. Severe complications, such as VAD pump thrombosis and outflow graft obstruction, are rare, yet still associated with high morbidity and mortality. Clinical presentation, VAD alarm and log files, laboratory analysis, and non-invasive cardiac imaging are crucial for establishing the correct diagnosis and determining clinical management. Early intervention is critical to prevent adverse cardiac remodelling or VAD pump failure.

Keywords LVAD; Pump thrombosis; Outflow graft obstruction; Thrombolysis; Log files

Received: 21 October 2020; Revised: 3 December 2020; Accepted: 20 January 2021

*Correspondence to: Stephan Dobner, MD, PhD, Department of Cardiology, Inselspital, Bern University Hospital, University of Bern, Bern, Switzerland. Tel: +41 31 632 19 71; Fax: +41 31 632 47 70. Email: stephan.dobner@insel.ch

Case report

A 67-year-old man with a history of ischaemic heart disease and bypass grafting presented to the cardiology department with ongoing low-flow alarms of his left ventricular assist device (LVAD).

Two years prior to presentation a HeartWare™ HVAD™, LVAD was implanted via an anterolateral thoracotomy with an outflow graft anastomosis to the descending aorta. This access route was chosen because of the repeat-surgery situation after coronary artery bypass grafting with prior sternotomy. The descending aorta was easy to reach without needing a second incision over the ascending aorta. After uneventful post-operative recovery and improvement from New York Heart Association Class IV to I–II, the patient presented with haematuria 4 months after LVAD implant. Auscultation suggested obstructed LVAD flow (Supporting Information, *Audio S1*). Laboratory analysis showing haemolysis in combination with a flow and power increase in the LVAD log files¹ confirmed ventricular assist device (VAD) pump thrombosis (*Figure 1*). Haematuria being the only symptom,

systemic thrombolysis was performed with 20 mg alteplase (*Figure 2*), which successfully restored LVAD function with normalization of VAD flow and power and resolution of haematuria (Supporting Information, *Audio S2* and *Figure 1*). After recurrent pump thromboses 6, 12, 13, and 14 months after LVAD implantation—each of the episodes was responsive to systemic thrombolysis—the decision to exchange the LVAD pump was made.

Because of the low incidence of pump thrombosis in the MOMENTUM 3 trial,² the HeartWare HVAD was replaced with a HeartMate 3 VAD. After disconnecting the HeartWare by loosening the sewing ring screw, the sewing cuff of the heartware was completely removed and replaced by the apical cuff of the HeartMate 3 with the core-then-sew technique. Each cuff has a different, non-compatible, closure system. Intraoperatively, the different sizes of the outflow grafts of the HVAD and HeartMate 3, the mobility of the new device, and the ingrown, static old outflow graft made it difficult to assess to ideal position and outflow graft length of the newly implanted HeartMate 3. To allow reattachment, the HeartMate 3 outflow graft was shortened, thereby removing

Figure 1 HeartWare pump thrombosis. (A) Log file shows flow and power in the target range, indicating normal ventricular assist device (VAD) function. (B) Between 17 and 19 October, a steady rise in flow (green) and power (red) can be appreciated, indicating VAD thrombosis. After systemic thrombolysis with 20 mg alteplase, flow and power normalize. (C) Labs confirm haemolysis due to VAD pump thrombosis (despite adequate anticoagulation). Lactate dehydrogenase (LDH) is sharply increased, haptoglobin below the measuring threshold. INR, international normalized ratio; LPM, L/min; RPM, revolutions per minute.

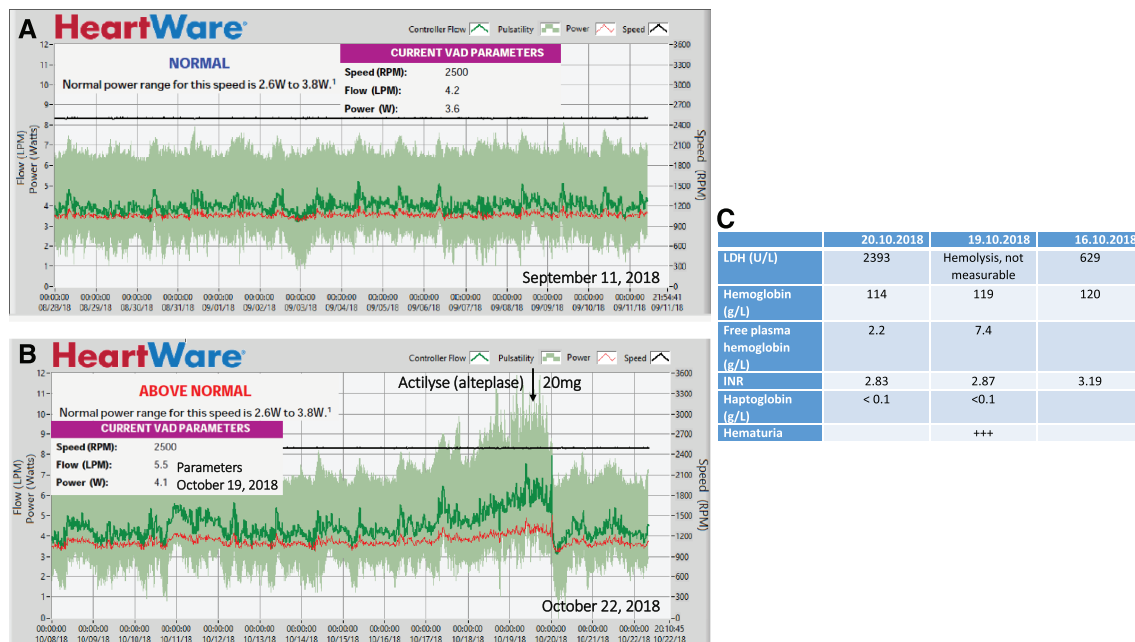
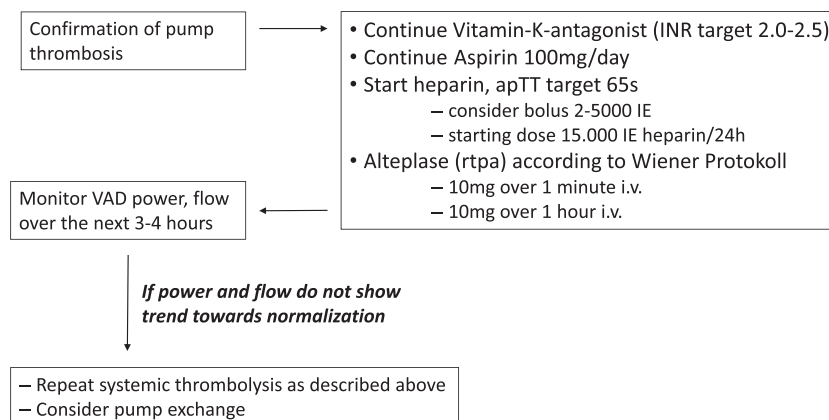


Figure 2 Management of anticoagulation and systemic thrombolysis for ventricular assist device (VAD) pump thrombosis. After diagnosis of pump thrombosis, oral anticoagulation with a targeted international normalized ratio (INR) of 2.0–2.5 was continued. Unfractionated heparin was additionally started with a targeted activated partial thromboplastin time (aPTT) of 65 s (and continued for 24–48 h) to support thrombolytic therapy with 20 mg alteplase (10 mg i.v. over 1 min, followed by 10 mg i.v. over 1 h). Systemic thrombolysis successfully restored left VAD function with normalization of VAD flow and power and resolution of haematuria.

Systemic thrombolysis for VAD pump thrombosis



most of the bend relief. The old outflow graft to the descending aorta was preserved and shortened accordingly by removing the bend relief of the HeartWare system. The larger size of the HeartMate 3 and intraoperative low-flow alarms caused by external compression of the outflow graft necessitated

intraoperative resection of two ribs. As repeated low-flow alarms were encountered during initial patient mobilization, a third rib, causing a hypomochlion, was resected on the first post-operative day. Thereafter, the post-operative recovery remained uneventful without reoccurrence of low LVAD flow.

Four months after pump exchange, the patient presented to the emergency room with continuous low-flow alarm (Figure 3). Log files showed a flow of 1.2 L over approximately 20 minutes. Patient history and clinical demonstration revealed posture dependency of the alarm, with the alarm going off when lying on his left side and subsiding when lying straight or standing up. We proceeded to perform computed tomography angiography (CTA) both in a supine and in a left lateral decubitus position demonstrating posture-dependent, dynamic outflow graft compression with a minimal luminal diameter measuring 5 × 7 mm in left lateral position and 11 × 13 mm in supine position, respectively. (Figure 4A;

published previously, adapted with permission from the publisher).³

As the symptoms were minor, low-flow alarms manageable when avoiding sleeping in a left lateral position, and a repeat intervention in a hostile environment not desirable, a wait-and-see approach was agreed upon.

Over the next 6 months, the patient was regularly seen in the outpatient VAD clinic. He recognized a slow decline in functional capacity. In line with progressive outflow graft obstruction, LVAD flow decreased from 4.0 to 2.7 L/min (Figure 3). Serial echocardiograms showed an increase in left ventricular end-diastolic diameter from 58 mm after VAD

Figure 3 Log files showing ventricular assist device (VAD) outflow graft obstruction. Log file shows flow and power in the target range, indicating normal VAD function (A). Log file shows progressive decline in flow (blue) with progressive outflow tract obstruction and continuous low-flow alarm (see arrow) prior to surgery. After surgical intervention, low-flow alarms were no longer recorded and a normalization of flow and power (red arrow) is seen (B). Illustration of VAD log files acquired over 12 months (C). Both a decline in flow and the blunted ramp test response are shown. LPM, L/min.

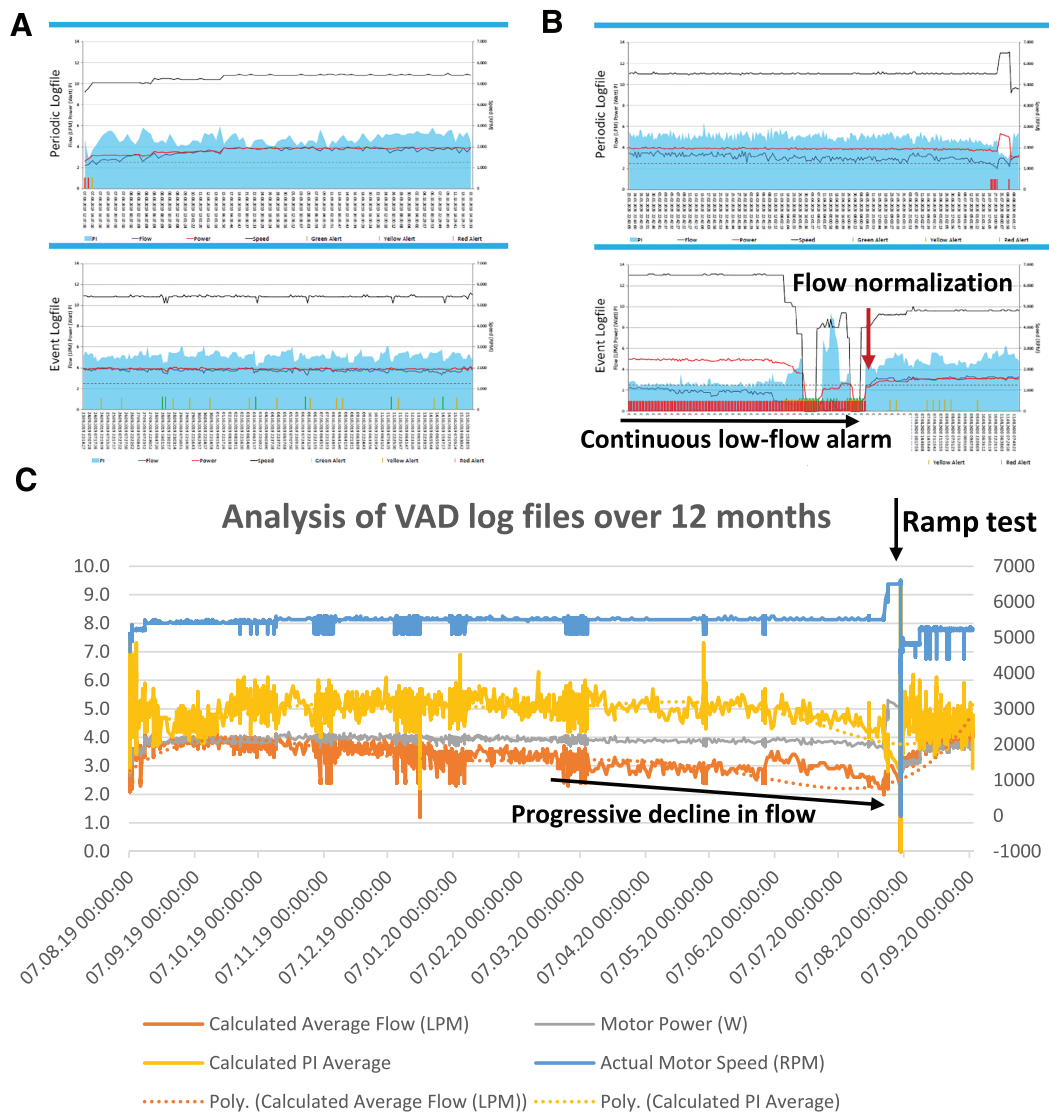
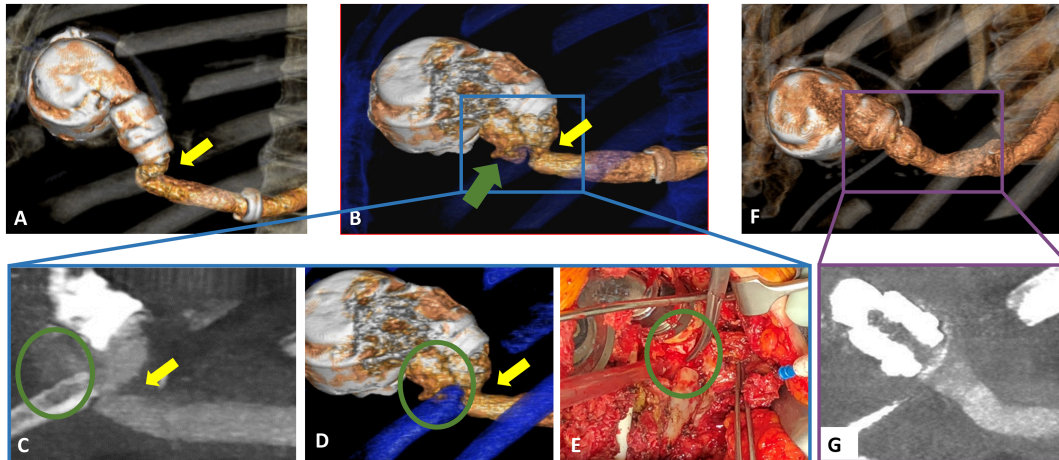


Figure 4 Computed tomography angiography (CTA) reconstructions allow visualization of progressive outflow graft obstruction by a rib fragment-induced pseudoaneurysm. Three-dimensional computed tomography angiogram reconstructions taken 4 (A) and 10 (B–D) months after ventricular assist device pump exchange and after surgical correction of the outflow graft (F, G), respectively. CTA visualized posture-dependent outflow graft kinking 4 months after ventricular assist device pump exchange (A, republished with permission from Oxford University Press). Repeat CTA 6 months after diagnosis of the outflow graft obstruction revealed a rib fragment-induced pseudoaneurysm (B–D) as cause of the progressive outflow graft obstruction. Intraoperatively, a 2-mm-sized hole (encircled) in the Dacron graft was seen (E). A follow-up CTA taken 4 weeks after surgical correction shows a shortened outflow graft without residual obstruction or kinking (F, G).



implantation to 67 mm. Under echocardiographic guidance, the revolutions per minute were increased from 5500 to 6500 without a significant increase in LVAD flow (from 2.7 to 3.0 L/min). The patient was hospitalized for a repeat CTA and interdisciplinary discussion of interventional and surgical options.

Computed tomography angiography showed progression of the outflow graft obstruction in the left lateral decubitus position (3.5 × 4 mm). The obstruction of the graft was thought to be associated with a progressive kink due to a costal hypomochlion at the surgical site and graft size incompatibility. Stenting was considered,⁴ yet the thought was abandoned because of the proximity of the obstruction to the origin of the outflow graft and the associated risk of getting a wire caught in the VAD rotor, before we proceeded with a surgical revision of the outflow graft.

During surgery, a pseudoaneurysm aggravating the pre-existing kink in the form of an external graft compression was found as the underlying cause of the progressive low-flow situation. While dissecting the outflow graft, major bleeding occurred, necessitating circulatory arrest in deep hypothermia. Upon inspection, the Dacron graft had been damaged by the remnants of the resected ribs, causing a 2-mm-sized hole (Figure 4E). The damaged segment of the HeartMate 3 outflow graft—Dacron was resected; after a new end-to-end anastomosis with the HeartWare outflow graft, no residual kinking was observed. LVAD flow normalized immediately. No further alarms were registered during follow-up. A repeat computed tomography angiogram

confirmed a straightened outflow tract without signs of obstruction (Figure 4F).

Discussion

According to the International Society for Heart and Lung Transplantation Mechanically Assisted Circulatory Support Registry, infections and bleeding remain the most common complications in mechanical circulatory support.⁵

Balancing bleeding risk and thromboembolic complications presents a major challenge in the management of VAD patients. While much rarer, the consequences of VAD pump thrombosis are typically more severe, as they include life-threatening device malfunction and thromboembolic stroke.

Anticoagulation management and time in the therapeutic international normalized ratio (INR) range play a key role in preventing late-onset pump thrombosis (>3 months after implantation) and bleeding complications, as an INR between 2.4 and 2.6 was associated with both low thromboembolic and bleeding risk.⁶ The factors determining early VAD thrombosis remain less clear, as no apparent association with adequate target INR (2–2.5) was seen in the first three post-operative months.⁶

Post-operative bridging with heparin, timely initiation of post-operative anticoagulation, and antithrombotic therapy play a key role (see Table 1 for management at Inselspital Bern), but likely so do the choice of VAD system,

Table 1 Management of early post-operative anticoagulation and antithrombotic therapy at the Bern University Hospital

Time after surgery	
0	VAD implantation
6	If no significant post-operative bleeding → Start heparin 10 000/24 h i.v.
24 1	Drains <50 mL/h → Heparin up-titration, target: anti-Xa 0.2–0.3 IU/mL
48 2	Drains <50 mL/h → Heparin target: anti-Xa 0.2–0.3 IU/mL Start aspirin 100 mg/day
3–5	After removal of drains → Start anticoagulation with vitamin K antagonist (target INR 2–2.5) Continue heparin (anti-Xa 0.2–0.3 IU/mL) until target INR is reached Continue aspirin 100 mg/day
h Post-operative day	

INR, international normalized ratio; VAD, ventricular assist device.

operative technique, and optimization of pump speed and haemodynamics during the intraoperative and early post-operative period.⁷

In our patient, haematuria and VAD alarms pointed towards a VAD pump thrombosis, and laboratory signs of haemolysis were instrumental in confirming the diagnosis⁸ (Figure 1). Depending on clinical presentation, treatment strategies for VAD pump thrombosis range from optimizing antithrombotic therapy and anticoagulation to thrombolysis or surgical therapy (e.g. pump exchange or transplantation).

During each thrombosis, our patients remained haemodynamically stable and symptom-free. Thus, we decided to proceed with systemic thrombolysis. The mechanism of the initial pump thrombosis remains unclear, as routine haematological work-up prior to VAD implantation excluded coagulopathies in our patient. The recurring thromboses were likely associated with the damaged surface area of the VAD, leading to increased thrombogenicity. The decision to wait with a VAD pump exchange was driven by the lack of patient symptoms, rapid and adequate response without complications to systemic haemolysis, and the challenging operating site after redo cardiac surgery.

Outflow graft obstruction

Continuous low-flow alarms were the first sign of outflow tract obstruction in our patient. Alarms and symptoms of progressive heart failure are the most common presentation (in 92% of patients) leading to hospital admission in these cases.⁹

After exclusion of hypovolaemia, arrhythmias, or hypertension, posture dependency of the low-flow alarm pointed towards an outflow graft obstruction, and the diagnosis was confirmed using CTA.³ In our increasingly symptomatic patient, a steady decline in LVAD flow (Figure 3) without an increase in VAD power and accompanying progressive left ventricular dilatation hinted towards progressive outflow graft obstruction. Other echocardiographic signs may include increased mitral regurgitation or aortic valve opening,¹⁰ but

were not present in our patient. The blunted change in LVAD flow seen during the echocardiographic ramp study is consistent with outflow tract obstruction and may be further supported by an invasive ramp test without translation of increasing pump speed into increased cardiac output or reduced pulmonary capillary wedge pressure.

Computed tomography angiography is an important tool when planning therapeutic intervention for outflow tract obstruction and may point towards the underlying mechanism. Interventional therapy and stenting of the outflow tract obstruction may be an option¹¹ to prevent a surgical redo procedure. The heart team's decision to proceed with a surgical revision was based on the technical difficulties encountered during the pump exchange surgery and the substantial outflow graft kinking seen in CTA. The mobility of the replacement VAD pump likely caused the initial outflow graft kink, allowing displacement towards the resected rib stump, subsequent puncture of the outflow graft, and pseudoaneurysm formation. As substantial bleeding was encountered after incision of the pseudoaneurysm, the decision to proceed with surgery appears, retrospectively, to have been the correct one.

Conflict of interest

None declared.

Supporting information

Additional supporting information may be found online in the Supporting Information section at the end of the article.

Audio S1. Pump thrombosis in a HeartWare ventricular assist device

Audio S2. Restoration of regular LVAD hum after systemic thrombolysis

References

- Jorde UP, Aaronson KD, Najjar SS, Pagani FD, Hayward C, Zimpfer D, Schloglhofer T, Pham DT, Goldstein DJ, Leadley K, Chow MJ, Brown MC, Uriel N. Identification and management of pump thrombus in the HeartWare left ventricular assist device system: a novel approach using log file analysis. *JACC Heart failure* 2015; **3**: 849–856.
- Mehra MR, Uriel N, Naka Y, Cleveland JC Jr, Yuzefpolskaya M, Salerno CT, Walsh MN, Milano CA, Patel CB, Hutchins SW, Ransom J, Ewald GA, Itoh A, Raval NY, Silvestry SC, Cogswell R, John R, Bhimaraj A, Bruckner BA, Lowes BD, Um JY, Jeevanandam V, Sayer G, Mangi AA, Molina EJ, Sheikh F, Aaronson K, Pagani FD, Cotts WG, Tatroles AJ, Babu A, Chomsky D, Katz JN, Tessmann PB, Dean D, Krishnamoorthy A, Chuang J, Topuria I, Sood P, Goldstein DJ, MOMENTUM 3 Investigators. A fully magnetically levitated left ventricular assist device—final report. *New Eng J Med* 2019; **380**: 1618–1627.
- Furholz M, Gisler F, Hunziker L, Huber AT, Grani C. Posture dependent dynamic external outflow graft compression in HeartMate 3™ left ventricular assist device. *Eur Heart J* 2020; **42**: 205.
- Wood CT, O'Malley TJ, Maynes EJ, Vishnevsky A, Morris RJ, Samuels LE, Massey HT, Tchanchaleishvili V. Survival outcomes of stenting outflow graft stenosis in continuous-flow left ventricular assist devices: a systematic review. *Heart Fail Rev* 2020; **25**: 985–992.
- Hannan MM, Xie R, Cowger J, Schueler S, de By T, Dipchand AJ, Chu VH, Cantor RS, Koval CE, Krabatsch T, Hayward CS, Nakatani T, Kirklin JK. Epidemiology of infection in mechanical circulatory support: a global analysis from the ISHLT Mechanically Assisted Circulatory Support Registry. *J Heart Lung Transplant* 2019; **38**: 364–373.
- Nassif ME, LaRue SJ, Raymer DS, Novak E, Vader JM, Ewald GA, Gage BF. Relationship between anticoagulation intensity and thrombotic or bleeding outcomes among outpatients with continuous-flow left ventricular assist devices. *Circulation Heart Failure* 2016; **9**: e002680.
- Maltais S, Kilic A, Nathan S, Keebler M, Emani S, Ransom J, Katz JN, Sheridan B, Brieke A, Egnaczyk G, Entwistle JW 3rd, Adamson R, Stulak J, Uriel N, O'Connell JB, Farrar DJ, Sundareswaran KS, Gregoric I, Investigators PS. PREVENTion of HeartMate II pump thrombosis through clinical management: the PREVENT multi-center study. *J Heart Lung Transplant* 2017; **36**: 1–12.
- Goldstein DJ, John R, Salerno C, Silvestry S, Moazami N, Horstmanshof D, Adamson R, Boyle A, Zucker M, Rogers J, Russell S, Long J, Pagani F, Jorde U. Algorithm for the diagnosis and management of suspected pump thrombus. *J Heart Lung Transplant* 2013; **32**: 667–670.
- Nathan S, Ghotra AS, Rajagopal K, Patel C, Kumar S, Patel M, Salas de Armas I, Jumean M, Akay MH, Akkanti B, Kar B, Gregoric ID. Left ventricular assist device outflow graft obstruction: a case series. *ASAIO J* 2020; **66**: 657–662.
- Stainback RF, Estep JD, Agler DA, Birks EJ, Bremer M, Hung J, Kirkpatrick JN, Rogers JG, Shah NR. Echocardiography in the management of patients with left ventricular assist devices: recommendations from the American Society of Echocardiography. *J Am Soc Echocardiogr Off Publ Am Soc Echocardiogr* 2015; **28**: 853–909.
- Wert L, Kaufmann F, Solowjowa N, Dreyse S, Zimpfer D, Falk V, Potapov EV, Mulzer J. Diagnosis and treatment strategies of outflow graft obstruction in the fully magnetically levitated continuous-flow centrifugal left ventricular assist device: a multicenter case series. *ASAIO J* 2020; **67**: e52–e54.