

# Personalized Clinical Decision Making Through Implementation of a Molecular Tumor Board: A German Single-Center Experience

Rouven Hoefflin  
 Anna-Lena Geißler  
 Ralph Fritsch  
 Rainer Claus  
 Julius Wehrle  
 Patrick Metzger  
 Meike Reiser  
 Leman Mehmed  
 Lisa Fauth  
 Dieter Henrik Heiland  
 Thalia Erbes  
 Friedrich Stock  
 Agnes Csanadi  
 Cornelius Miething  
 Britta Weddeling  
 Frank Meiss  
 Dagmar von Bubnoff  
 Christine Dierks  
 Isabell Ge  
 Volker Brass  
 Steffen Heeg  
 Henning Schäfer  
 Martin Boeker  
 Justyna Rawluk  
 Elke Maria Botzenhart  
 Gian Kayser  
 Simone Hettmer  
 Hauke Busch  
 Christoph Peters  
 Martin Werner  
 Justus Duyster  
 Tilman Brummer  
 Melanie Boerries  
 (continued)

abstract

**Purpose** Dramatic advances in our understanding of the molecular pathophysiology of cancer, along with a rapidly expanding portfolio of molecular targeted drugs, have led to a paradigm shift toward personalized, biomarker-driven cancer treatment. Here, we report the 2-year experience of the Comprehensive Cancer Center Freiburg Molecular Tumor Board (MTB), one of the first interdisciplinary molecular tumor conferences established in Europe. The role of the MTB is to recommend personalized therapy for patients with cancer beyond standard-of-care treatment.

**Methods** This retrospective case series includes 198 patients discussed from March 2015 through February 2017. The MTB guided individual molecular diagnostics, assessed evidence of actionability of molecular alterations, and provided therapy recommendations, including approved and off-label treatments as well as available matched clinical trials.

**Results** The majority of patients had metastatic solid tumors (73.7%), mostly progressive (77.3%) after a mean of 2.0 lines of standard treatment. Diagnostic recommendations resulted in 867 molecular diagnostic tests for 172 patients (five per case), including exome analysis in 36 cases (18.2%). With a median turnaround time of 28 days, treatment recommendations were given to 104 patients (52.5%). These included single-agent targeted therapies (42.3%), checkpoint inhibitors (37.5%), and combination therapies (18.3%). Treatment recommendations were implemented in 33 of 104 patients (31.7%), of whom 19 (57.6%) showed stable disease or partial response, including 14 patients (7.1% of the entire population) receiving off-label treatments.

**Conclusion** Personalized extended molecular-guided patient care is effective for a small but clinically meaningful proportion of patients in challenging clinical situations. Limited access to targeted drugs, lack of trials, and submission at late disease stage prevents broader applicability, whereas genome-wide analyses are not a strict requirement for predictive molecular testing.

JCO Precis Oncol. © 2018 by American Society of Clinical Oncology Licensed under the Creative Commons Attribution 4.0 License

## INTRODUCTION

Personalized cancer medicine uses molecular biomarkers for standard-of-care treatment stratification, such as activating *BRAF* mutations for the treatment of melanoma with *BRAF* inhibitors.<sup>1</sup> In parallel, it has become evident that therapeutic strategies with targeted drugs are no longer specific for the treatment of distinct entities but rather for particular molecular profiles across different cancers.<sup>2-4</sup> Thus, testing for single-drug targets can provide therapeutic

information, but its predictive value may vary between entities. Although an activating *BRAF* V600E mutation will predict response to *BRAF* inhibitors in melanoma,<sup>1</sup> it may not do so in colorectal cancers because of epidermal growth factor receptor (EGFR) feedback activation with requirement of additional EGFR targeting.<sup>5,6</sup> Moreover, non-V600 *BRAF* mutations might not be responsive to *BRAF* inhibition at all.<sup>7</sup> Thus, one-mutation-one-drug approaches may be ineffective, especially in heavily pretreated patients with cancer. Underlying causes include

Silke Lassmann  
Nikolas von Bubnoff

Author affiliations and support information (if applicable) appear at the end of this article.

M.B., S.L., and N.v.B. share authorship.

**Corresponding author:**

Nikolas von Bubnoff, MD, Division Hematology, Oncology, and Stem Cell Transplantation, Medical Center, University of Freiburg, Hugstetter Str 55, D-79106 Freiburg, Germany; Twitter: @Uniklinik\_Fr; e-mail: nikolas.bubnoff@uniklinik-freiburg.de.

Licensed under the Creative Commons Attribution 4.0 License



the challenge to discriminate relevant mutations and pathway aberrations from background and passenger mutations,<sup>8</sup> the clonal molecular intra- and intertumoral heterogeneity,<sup>9,10</sup> and dynamic changes in the molecular composition of cancer, especially if treatment leads to selection of resistant subclones. Examples include the selection of *RAS* mutant clones in colorectal cancer treated with EGFR antibodies, such as cetuximab or panitumumab,<sup>11</sup> or the acquisition of a secondary *EGFR* T790M kinase domain mutation mediating resistance to EGFR kinase inhibitors, such as gefitinib or erlotinib in non-small-cell lung cancer.<sup>12,13</sup>

This increasing amount of complexity requires tools to translate individual information into personalized treatment concepts. A molecular tumor board (MTB) represents a platform that integrates clinical and molecular parameters for clinical decision making. Here, we report the 2-year experience of the Comprehensive Cancer Center Freiburg MTB that provides personalized treatment recommendations on the basis of individual molecular diagnostics. We hereby present detailed data on patient characteristics, treatment recommendations, clinical adherence to recommendations, and outcomes of treated patients.

## METHODS

### MTB Implementation and Organization

The MTB is run by an interdisciplinary team of medical and scientific experts with a focus on clinical and translational oncology and computational and molecular biology. Cases are submitted using an online registration and documentation system (Appendix Fig A1). Each case is assigned to a clinician scientist with expertise in the specific cancer type (entity expert), who reviews the literature and available clinical trials. In parallel, the molecular pathology team reviews the individual tumor pathology and sets up a presentation of already performed and suggested diagnostic tests. The initial discussion includes a clinical case presentation, review of the pathology data and the tumor-specific genetic landscape, known molecular predictive or prognostic markers, active clinical trials, and potential in- and off-label molecular targeted treatments. The molecular diagnostic requests are performed using certified and standard operating procedure (SOP)-driven processes.

Diagnostic results are presented to the MTB by the molecular pathology and/or the computational biologist team. After discussion, treatment recommendations are given and are supported by levels of evidence (Data Supplement). These are based on published molecular biomarker recommendations.<sup>14</sup>

### Patients and Patient Informed Consent

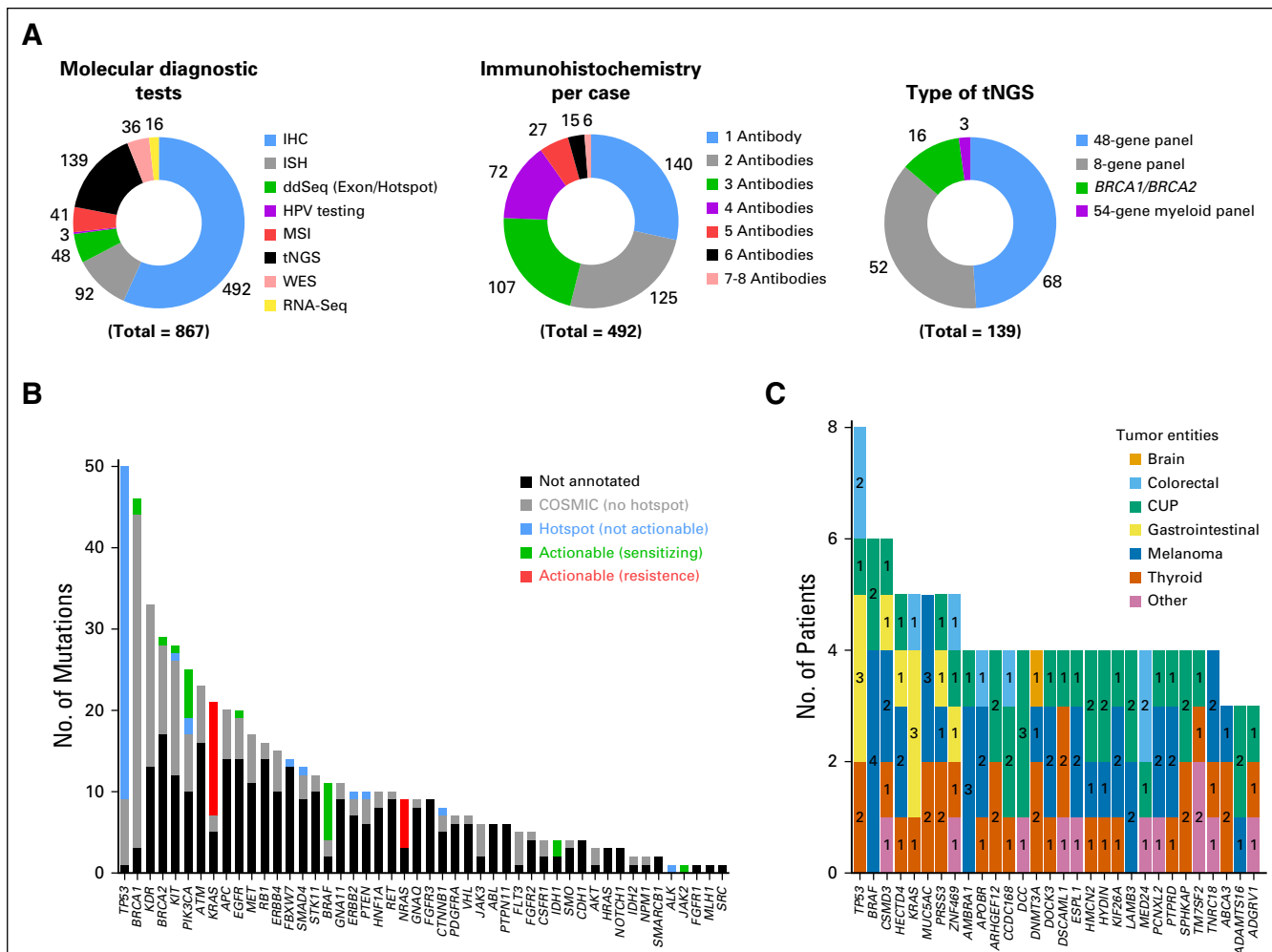
All patients discussed (n = 198) were included in this retrospective single-center case series. All molecular diagnostic tests were conducted in accordance with the medical treatment contract signed by each patient. Patient tissue was stored in the local biobank and required a signed informed consent, approved by the University of Freiburg institutional review board. Patients with individual or family history indicative of germline disease-causing mutations were referred to the Institute of Human Genetics for counseling and possibly germline genetic analyses.

### Diagnostic Molecular Pathology

Appropriate tissues were subjected to molecular analyses as recommended by the MTB (Fig 1). All analyses were carried out according to routine pathology laboratory testing procedures, with assays being nationally validated and certified. Targeted next-generation sequencing (tNGS) included a custom-designed hotspot eight-gene panel (designed by S.L. and produced by Illumina, San Diego, CA), a *BRCA1/2* panel (produced by Illumina), a hotspot 48-gene panel (TruSeq Amplicon Cancer Panel, Illumina), and a 54-gene myeloid panel (TruSight Myeloid Sequencing Panel, Illumina).<sup>15-17</sup>

### Investigational Genetic Tumor Characterization

Whole-exome sequencing (WES) and RNA sequencing (RNA-Seq) were performed on tumor tissue. Complementary germline DNA was obtained from peripheral blood or healthy tissue. Only nonsynonymous mutations detected with a variant allele frequency > 10% and listed with a minor allele frequency < 0.001% by the Exome Aggregation Consortium<sup>18</sup> were reported. Single nucleotide variations were classified according to ClinVar,<sup>19</sup> COSMIC,<sup>20</sup> dbSNP,<sup>21,22</sup>



**Fig 1.** Molecular diagnostic testing. (A) The panels depict the type of molecular diagnostic testing performed (left panel) and specify the number of immunohistochemical stains (one to eight antibodies) per case (middle panel) as well as the type of targeted next-generation sequencing (tNGS) library sequenced (right panel). tNGS was performed either by a custom panel (eight-gene panel), a 48-gene panel (TruSeq Amplicon Cancer Panel, Illumina, San Diego, CA), a 54-gene myeloid panel (TruSight Myeloid Sequencing Panel, Illumina) or a custom *BRCA1/2* consortium panel. (B) The bar plot depicts the number of sequence variants detected in tumor DNA of 139 patients using tNGS. The bars indicate the numbers of mutations in a given gene (black) and sequence variants that are annotated in COSMIC (gray). The numbers of actionable mutations is shown in green (drug sensitizing) and red (drug resistance). (C) The bar plot depicts the 30 most frequently somatically mutated genes of 36 patients analyzed by whole-exome sequencing (WES). The colors indicate different tumor entities. Mutations with a variant allele frequency > 10% and a minor allele frequency < 0.001 were considered. The GI tumor category includes liver, pancreas, stomach, and esophagus. CUP, carcinoma of unknown primary; HPV, human papillomavirus; IHC, immunohistochemistry; ISH, in situ hybridization; MSI, microsatellite instability.

hotspot mutation<sup>23,24</sup> (<http://cancerhotspots.org/#/home>), TARGET db (<http://archive.broadinstitute.org/cancer/cga/target>), drug-gene interaction (DGIdb; <http://www.dgiddb.org>),<sup>25</sup> and CADD (<http://cadd.gs.washington.edu>), and categorized according to the predicted impact on protein function by Condel.<sup>26-31</sup> Copy number alteration analysis was performed using Control-FREEC.<sup>32</sup> The STAR<sup>33</sup> aligner was used to align and infer the gene expression level. FusionCatcher (<https://doi.org/10.1101/011650>) was used to predict gene fusions. Differentially expressed genes were identified using the limma-voom package from R/Bioconductor.<sup>34,35</sup>

## RESULTS

From March 2015 through February 2017, 49 MTB meetings were attended by a median of 16 physicians and scientists, ensuring continuous interdisciplinary data interpretation and discussions with diagnostic and therapeutic decision making. The workflow of the MTB included a case and literature review, molecular diagnostic recommendations, and follow-up discussions of the molecular diagnostic results, including treatment recommendations (Appendix Fig A1). Thus, a total of 385 case discussions were held for 198 patients (1.9 discussions per patient;

**Table 1.** Results

Recommendations	No. (%)
Meetings, No.	49
Case discussions, total No. (per-patient average)	385 (1.9)
Recommendations, No.	505
Diagnostic	305 (60.4)
Therapeutic	104 (20.6)
No treatment recommendation	77 (15.2)
Conditional recommendation	14 (2.8)
Genetic counseling	4 (0.8)
Referral to organ board	1 (0.2)
Diagnostic recommendations, total No. (per-patient average)	305 (1.5)
Patients with diagnostic recommendations	172 (86.9)
Routine pathology	153 (89.0)
Extended genetic analysis*	69 (40.1)
Rebiopsy	15 (8.7)
Other	6 (3.5)
Diagnostic recommendations, not implemented	71 (23.3)
Patients with treatment recommendations	104 (52.5)
Implemented	33 (31.7)
Partial response	11 (33.3)
Stable disease	8 (24.2)
No. of treatment recommendations	104
Treatment recommendations, not implemented	71 (68.3)

NOTE: Data presented as No. (%) unless otherwise noted. See Figure 2 and Data Supplement for details of treatment recommendations and treatment recommendations not implemented.

\*Whole-exome sequencing, RNA-seq.

Table 1). In total, 505 structured recommendations were given (2.5 per patient; Table 1). These included 305 diagnostic and 104 treatment recommendations.

### Patient Characteristics

The average patient age at the time of the initial MTB presentation was 58 years (range, 1 to 85 years). Detailed patient characteristics are listed in Table 2. One hundred ninety-one of 198 patients (96.4%) had an underlying malignant condition. Patients with solid tumors largely outbalanced hematopoietic malignancies (95.5% *v* 4.5%). Soft tissue tumors (12.6%), CNS tumors (11.1%), and carcinoma of unknown primary (CUP; 10.1%) were the most frequent tumor entities. The majority of patients (*n* = 146; 73.7%) suffered from metastatic disease, and 77.3% (*n* = 153) showed disease progression while receiving the standard treatment (Table 2). The mean time interval from diagnosis to first

MTB discussion was 33.6 months (range, 1 to 541 months). Patients with treatment-refractory metastatic disease had undergone a mean of 2.0 (range, one to 11) lines of systemic pretreatments. A minority of the patients was referred to the board with rare tumors (*n* = 33; 16.7%) or because of young age (*n* = 3; 1.5%).

### Molecular Diagnostic Testing

The distribution of molecular diagnostic recommendations is shown in Table 1. For 172 patients (86.9%), 305 recommendations were given and included routine molecular tests in 153 (89%), extended genetic analysis in 69 (40.1%), and both in 53 (30.8%) patients. Rebiopsies were recommended in 15 cases, mostly because of lack of adequate tissue. Of all diagnostic recommendations, 234 (76.7%) were implemented, resulting in 867 single diagnostic tests (mean, five per patient), including 815 routine molecular tests and 52 extended genetic analyses (Fig 1A, left panel).

Routine molecular diagnostics included immunohistochemical (IHC) staining for biomarkers (*n* = 492; Fig 1A, middle panel), such as programmed death-ligand 1 (PD-L1) and mismatch repair proteins, in situ hybridizations (ISH) for gene copy number analyses (*n* = 92), and testing for microsatellite instability and/or gene hotspot variations (*n* = 89) and tNGS (*n* = 139; Fig 1A). The latter included libraries of different gene panels (Fig 1A; right panel). The most frequent COSMIC annotated sequence variants detected by tNGS occurred in *TP53*, *BRCAl*, *KDR*, *KIT*, *KRAS*, *PIK3CA*, *BRCA2*, and *BRAF* (Fig 1B; Data Supplement). Therapeutically relevant mutations in hotspot regions were identified in 41 of 139 patients (29.5%), including drug-sensitizing variants in *BRAF*, *PIK3CA*, *IDH1*, *EGFR*, and *KIT*, as well as drug resistance variants in *KRAS* and *NRAS*.

Extended genetic analyses including exome and transcriptome assays were performed for 36 patients (18.2%; WES and RNA-Seq: *n* = 35; RNA-Seq only: *n* = 1). In those, we identified a total of 5,335 variants, including 18 COSMIC annotated hotspot mutations (Data Supplement). Sixteen were classified as therapy relevant according to the DGI and the TARGET databases. Among the remaining non-hotspot mutations, 1,518 were annotated in COSMIC, including 288 and 28 mutations annotated in

**Table 2.** Patient Characteristics

Characteristic	
Total, No.	198
Sex	
Female	84 (42.4)
Male	114 (57.6)
Age, years, median (range)	58 (1-85)
Time interval from diagnosis to first MTB, months, median (range)	33.6 (1-541)
Tumor type	
Soft tissue	25 (12.6)
CNS	22 (11.1)
Unknown primary site	20 (10.1)
Colorectal	19 (9.6)
Urogenital	15 (7.5)
Thyroid	14 (7.0)
Breast	10 (5.1)
Lung	9 (4.5)
Hepatobiliary	8 (4.0)
Skin	8 (4.0)
Upper GI tract	8 (4.0)
Hematologic	8 (4.0)
Neuroendocrine	6 (3.0)
Pediatric	5 (2.5)
Head and neck	1 (0.5)
Others	13 (6.6)
Solid tumors (n = 189): stage at presentation	
Complete remission	1 (0.5)
Localized disease	42 (22.2)
Metastatic disease	146 (77.3)
No. of previous lines of therapy, mean (range)	
0	25 (12.6)
1	66 (33.3)
2 to 3	80 (40.4)
> 3	27 (13.6)
Reason for referral	
Progressive disease after standard treatment	153 (77.3)
Rare tumor	33 (16.7)
Others	12 (6.1)

NOTE: Data presented as No. (%) unless otherwise noted.  
Abbreviation: MTB, Molecular Tumor Board.

DGI and TARGET databases, respectively (Data Supplement). A total of 3,799 mutations were unknown to COSMIC (Data Supplement). The disease impact of non-hotspot mutations is more difficult to evaluate; however, it can lead to

additional therapy-relevant insights. For example, the *ERBB2* S656F mutation might, according to TARGET and DGI databases, constitute an activating mutation, therefore targetable by trastuzumab or lapatinib. The most frequently mutated genes were *TP53* and *BRAF* (Fig 1C).

Overall, 71 of 305 diagnostic recommendations (23.3%) were not pursued. As shown in the Data Supplement, reasons for nonadherence included technical reasons (53.5%; mostly lack of sufficient tissue or DNA/RNA), patient death (12.7%), loss to follow-up (11.3%), medical reasons (9.9%), or patient will (9.9%).

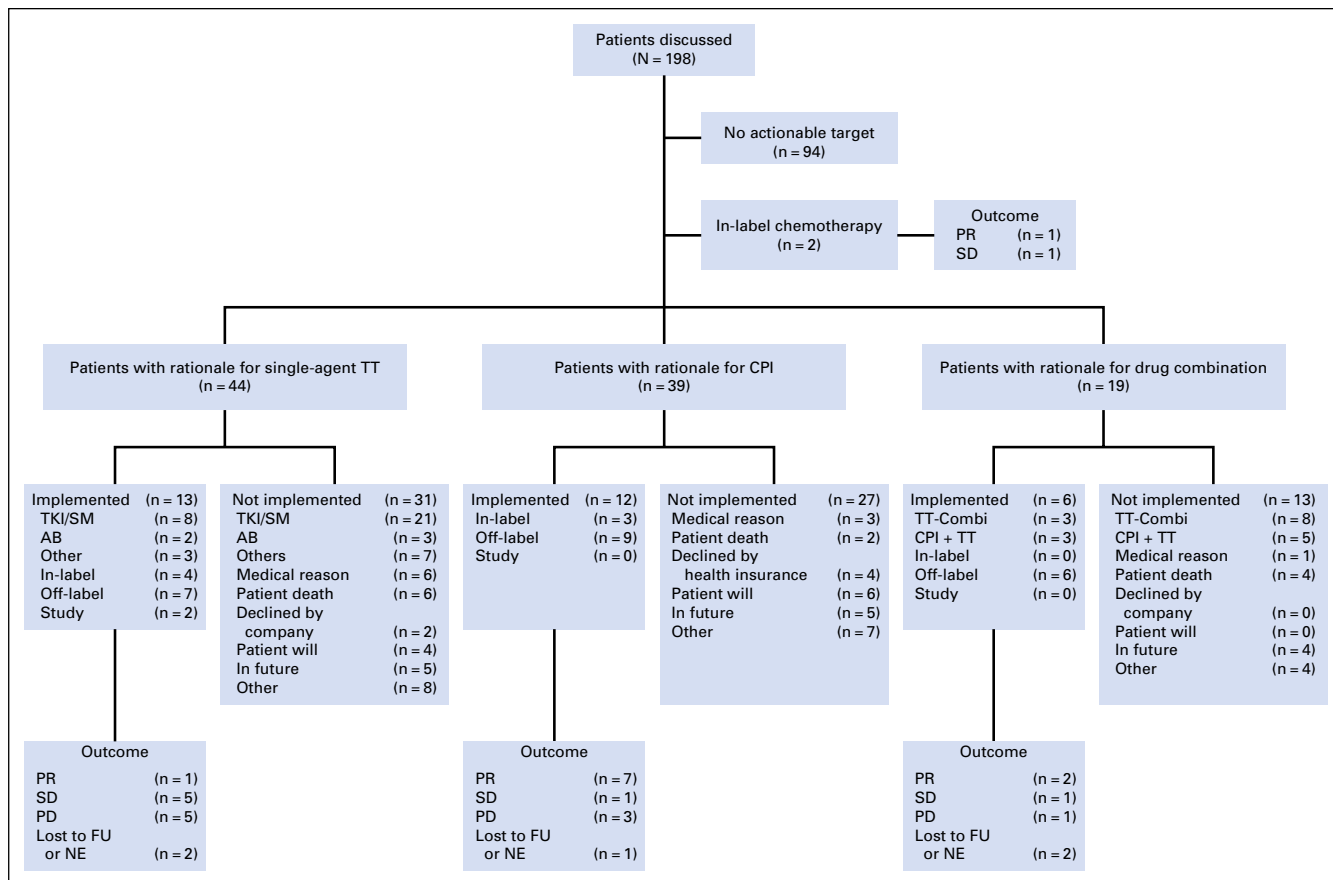
### Treatment Recommendations

Specific treatment recommendations were given to 104 patients (Table 1; Fig 2) and mainly included off-label immune checkpoint inhibitor (CPI; n = 36; 34.6%), off-label targeted therapy (n = 19; 18.3%) with tyrosine kinase inhibitors, small molecules or antibodies that were not CPI (AB), trial inclusions (n = 13; 12.5%), and off-label combination treatments (n = 18; 17.3%; Data Supplement; Fig 2). Ninety of 104 treatment recommendations (86.5%) were either off-label therapies (n = 77) or trial inclusions (n = 13).

The implementation rate of treatment recommendations was 31.7% (33 of 104). In-label recommendations were pursued in nine of 14 cases (64.3%), whereas off-label recommendations and trial inclusions were implemented in only 28.6% (22 of 77) and 15.4% (two of 13) of the cases, respectively. Intended trial inclusion in 11 patients failed because of poor performance status or patient death (n = 5), closed trial arm (n = 4), or patient will (n = 2). Main reasons for nonimplementation of treatment recommendations included loss to follow-up (22.5%), recommendation in the future (19.7%), patient death (16.9%), patient will (14.1%), and medical reasons (14.1%; Data Supplement). Of note, evidence level of individual off-label recommendations did not affect implementation rates (data not shown).

### Clinical Outcome

In 33 patients with implemented treatment recommendations, partial remissions (PR) and stable diseases (SD) were seen in 11 (33.3%) and eight patients (24.2%; Table 1), respectively. After excluding in-label therapies, nine patients



**Fig 2.** Flow diagram of patients discussed at the Molecular Tumor Board. Responses were determined according to Response Evaluation Criteria in Solid Tumors (RECIST) version 1.1. AB, antibody; Combi, combination; CPI, checkpoint inhibitor; FU, follow-up; NE, not evaluable; PD, progressive disease; PR, partial remission; SD, stable disease; SM, small molecule; TKI, tyrosine kinase inhibitor; TT, targeted therapy.

achieved PR and five patients SD, resulting in an overall response rate of 4.6% (nine of 198 patients) and a disease control rate (DCR) of 7.1% (14 of 198 patients). Of note, all five patients experiencing SD experienced disease progression while receiving the previous treatment. Of 14 responders receiving off-label therapies, eight (57.1%) showed a progression-free survival (PFS) ratio (PFS<sub>2</sub>/PFS<sub>1</sub>; PFS<sub>r</sub>) > 1.3, supporting the impact of the recommended therapies.<sup>36</sup> Three patients had a PFS<sub>r</sub> < 1.3 with ongoing responses, meaning that their PFS<sub>r</sub> is still increasing. Details about the outcome of responding patients are shown in Table 3. Two individual cases are shown in the Data Supplement. Adherence to recommendations and outcome according to type of treatment is shown in Fig 2. To assess whether implementation of treatment recommendations affected overall survival from first MTB discussion, we analyzed all patients with stage IV malignancies according to three subgroups (n = 148; Fig 3). The median survival was not reached for patients with implemented treatment recommendations (n = 33 recommendations pursued; 95% CI, 9

months to not reached), 8 months for patients for whom treatment recommendations were not implemented (n = 43 recommendations not pursued; 95% CI, 3 to 10 months), and 10 months for patients who did not receive a treatment recommendation (n = 72 no recommendations; 95% CI, 7 to 17 months). Patients who did not receive the recommended therapy because of death before treatment initiation (n = 12) were excluded from analysis.

## DISCUSSION

In a cohort of 198 patients with mostly advanced malignancies beyond standard-of-care treatment, the Comprehensive Cancer Center Freiburg MTB identified actionable targets in 52.5% of the cases. Thirty-two percent received the recommended treatment. In 33 patients with implemented treatment recommendations the disease-control rate was 57.6%; it was 9.6% (19 of 198 patients) for the entire cohort. Because the primary goal of an MTB is to give treatment recommendations beyond standard of care, we excluded five responders who received in-label

**Table 3.** Patients With Tumor Response

Cancer Type	Rationale for Treatment Recommendation	Board Recommendation	EL	L	R	PFS2 (week)	PFS1 (week)	PFSr	Outcome
Adeno-CUP	Reclassification: histopathological most likely from GI tract	Chemotherapy with FOLFIRI	A1	In	PR	36	NE	NE	PR for 9 months, then PD and death after 14 months
	Immunogenic tumor (PD-L1 positive in cancer cells, abundant TILs, high mutational burden with 358 SNVs and 7 LoH)	Checkpoint inhibition with nivolumab	B3	Off	PR	> 76	70	> 1.1	PR since 17 months and ongoing
	Reclassification: histopathological most likely pancreatic cancer	Second-line treatment with gemcitabine and NAB-paclitaxel	A1	In	SD	61	17	3.6	For 14 months, then PD
ALL	Combination with JAK inhibitor for synergistic antistromal effect <sup>7</sup>	Combination of ruxolitinib and nilotinib analog to CoRNear trial ( <a href="https://ClinicalTrials.gov/ct2/show/study/NCT02253277">ClinicalTrials.gov</a> identifier: NCT02253277)	C1	Off	PR	22	39	0.6	Marked decrease of <i>BCR-ABL</i> transcript ratio for 4 months, then PD
Ependymoma	Activation of PI3K/mTOR pathway suggested by positive pS6K staining (70% of tumor cells)	Targeted therapy with sirolimus	C3	Off	SD	65	11	5.9	For 16 months, then PD
CRC	Immunogenic tumor (PD-L1 positive in 5% of cancer cells, abundant TILs, MSI deficiency)	Checkpoint inhibition with pembrolizumab	A3	Off	PR	> 99	17	> 5.8	Since 22 months and ongoing
GIST	In-label first-line treatment	Imatinib	A1	In	SD	NE	154	NE	Since 35 months and ongoing
GBM	Immunogenic tumor (PD-L1 positive in 20% of cancer cells, TILs in tumor periphery)	Combination of nivolumab and bevacizumab	B1	Off	PD + CI	12	35	0.3	Significant CI after 2 months. Imaging at month 4 demonstrated PD
Lymphoma plus NBCCS	After chemotherapy (Hodgkin lymphoma) the patient is under risk to develop basaloma or other secondary neoplasia because of the underlying NBCCS.	Prophylaxis with hedgehog inhibitor cholecalciferol	C3	Off	NE	NE	NE	NE	No basalomas since start of chemotherapy for 13 months and ongoing
Melanoma	BRAF exon 15 mutation D594G described as inhibitory mutation <sup>38</sup>	Combination of targeted therapy with sorafenib and trametinib	C3	Off	SD	11	11	1.0	SD at week 11 with regressive liver metastases. Clinical progression at week 21. Patient died at month 7.
NSCLC	Mutation in EGFR exon 19	Targeted therapy with gefitinib	A1	In	PR	NE	32	NE	Initially good PR, then PD after 8 months
Ovary	No molecular rationale but trial availability	Trial (anti-VEGF/ANG2 nanobody BI 836880; <a href="https://ClinicalTrials.gov/ct2/show/study/NCT02674152">ClinicalTrials.gov</a> identifier: NCT02674152)	C1	Off	SD	69	11	6.3	For 16 months, then PD
Squamous-CUP	Immunogenic tumor (51 SNVs and 13 LoH)	Checkpoint inhibition with nivolumab	B3	Off	SD	13	22	0.6	Stable disease and significant clinical improvement for 4 months. Then PD and death.

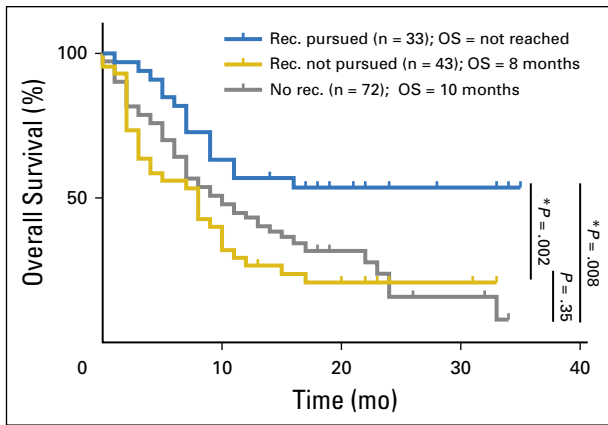
(Continued on following page)

**Table 3.** Patients With Tumor Response (Continued)

Cancer Type	Rationale for Treatment Recommendation	Board Recommendation	EL	L	R	PFS2 (week)	PFS1 (week)	PFSr	Outcome
SCLC	Results from Checkmate-032 demonstrating responses to nivolumab independent of PD-L1 expression (PD-L1 < 1% on cancer cells)	Checkpoint inhibition with nivolumab	A3	Off	PR	68	16	4.3	Since 16 months and ongoing
PNET	Study availability for solid tumors	Trial (anti-VEGF/ANG2 nanobody BI 836880; <a href="https://clinicaltrials.gov/ct2/show/study/NCT02674152">ClinicalTrials.gov identifier: NCT02674152</a> )	C1	Off	SD	> 61	169	> 0.4	Since 14 months and ongoing
Sarcoma	Despite nonimmunogenic tumor (15 SNVs, 1 LoH, no PD-L1 on cancer cells, few TILs), recent data show response to checkpoint inhibition (SARC028 study)	Checkpoint inhibition with pembrolizumab	A3	Off	PR	78	228	> 0.3	Since 18 months and ongoing
Thyroid (medullary)	RET M918T	Targeted therapy with vandetanib	A1	In	SD	NE	78	NE	For 18 months, then PD
Thyroid (anaplastic)	Immunogenic tumor (PD-L1 positive in 80% of cancer cells, abundant TILs, 412 SNVs, and 112 LoH, suggesting genetic instability)	Checkpoint inhibition with pembrolizumab	A3	Off	PR	98	5	19.6	PR at month 2 and ongoing since 22 months. Normalization of thyroglobulin at month 5 and ongoing. Discontinuation of pembrolizumab at month 8
Thyroid (anaplastic)	Immunogenic tumor (PD-L1 positive in 60% of cancer cells, 1,234 SNVs, and 16 LoH, suggesting genetic instability)	Combination of lenvatinib and pembrolizumab	B3	Off	PR	96	16	6.0	Since 22 months and ongoing
Thyroid (anaplastic)	Immunogenic tumor (PD-L1 positive in 50% of cancer cells, moderate infiltration of TILs, high mutational burden, with 99 SNVs and 12 LoH), SNVs and CNVs indicating enrichment in MAPK-P13K signaling	Combination of lenvatinib and pembrolizumab	B3	Off	PR	70	6	11.7	For 16 months, then PD
Thyroid (papillary)	Immunogenic tumor (PD-L1 positive in 40% of cancer cells, abundant TILs); results of Keynote-012 trial.	Checkpoint inhibition with pembrolizumab	C3	Off	PR	25	8	3.1	PR for 5 months, then PD of the primary tumor

NOTE. Twenty-one of 198 patients received the recommended therapy and showed at least SD (19 patients) and/or significant CI (one patient). One patient was treated pre-emptively; therefore, the response was not evaluable. Listed are the diagnostic results that constituted the rationale for treatment recommendation, the board recommendation including level of evidence (EL), in- or off-label status (L), treatment response (R), PFS of the recommended treatment (PFS2; PFS1 if first line), PFS of the previous systemic treatment (PFS1), PFS ratio (PFSr, PFS2/PFS1), and outcome. Abbreviations: ALL, acute lymphoblastic leukemia; ANG2, angiopoietin-2; CI, clinical improvement; CNV, copy number variation; CRC, colorectal cancer; CUP, cancer of unknown primary; FOLFIRI, fluorouracil, leucovorin, and irinotecan; GBM, glioblastoma; GIST, GI stromal tumor; LoH, loss of heterozygosity; MAPK, mitogen-activated protein kinase; MSI, microsatellite instability; mTOR, mammalian target of rapamycin; NAB-paclitaxel, nanoparticle albumin-bound paclitaxel; NBCCS, nevoid basal cell carcinoma syndrome; NE, not evaluable; NSCLC, non-small-cell lung cancer; PD, progressive disease; PD-L1, programmed death-ligand 1; PFS, progression-free survival; P13K, phosphatidylinositolide 3-kinase; PNET, primitive neuroectodermal tumor; PR, partial response; SCLC, small-cell lung cancer; SD, stable disease; SNV, single-nucleotide variant; TIL, tumor-infiltrating lymphocyte; VEGF, vascular endothelial growth factor.





**Fig 3.** Survival analysis.

The Kaplan-Meier curve shows the survival of the following three subgroups of patients with stage IV malignancies (n = 148): patients who implemented the treatment recommendation (Rec. pursued, n = 33), patients who did not implement the treatment recommendation (Rec. not pursued, n = 43; of note: patients who did not receive the recommended therapy because of death before treatment initiation [n = 12] were excluded from analysis), and patients who did not receive a treatment recommendation (n = 72). The curve comparison with the log-rank (Mantel-Cox) test revealed statistical significant differences as shown on graph. OS, overall survival. (\*)  $P < .01$ .

therapies resulting in a DCR of 7.1% (14 of 198 patients). Other MTB case series reported DCRs in 3.2%, 7.8%, 9%, and 23.3% of the patients,<sup>38-41</sup> suggesting that approximately 10% of patients might benefit from advanced personalized decision making.

Although molecular heterogeneity will limit the effect of therapeutic kinase inhibitors, higher nonsynonymous mutational burden can create more neoantigens and therefore improve response rates to CPI.<sup>42,43</sup> In our series, eight of 11 patients (72.7%) showing PR received CPI, including seven off-label uses. Predictive biomarkers for individualized immunotherapies are emerging and changing rapidly, with strong differences between entities.<sup>44</sup> Here, we used IHC for programmed cell death protein 1 (PD-1)/PD-L1, tumor-infiltrating lymphocytes, microsatellite instability testing, and mutational burden assessment as predictive biomarkers. In the near future, identifying individual cancer neoantigens might allow a more precise prediction of responses to immunotherapies.<sup>45</sup> This highlights the importance of an interdisciplinary MTB team that analyzes and interprets biomarkers to identify patients who might benefit from off-label immuno-oncology treatments.

In an MTB workflow, the portfolio of molecular diagnostic tests, as well as criteria to match and prioritize targeted therapies to molecular biomarkers, affects the probability to identify patients with actionable targets. Here, we used customized molecular diagnostics, including IHC/ISH and tNGS, in 153 out of 198 patients (77.3%). We implemented WES or RNA-Seq analyses for patients with carcinomas of unknown primary and rare cancers and with diseases in which routine molecular diagnostics

did not reveal any actionable target (18.2% of patients).

Multidimensional data have not been implemented successfully to clinical routine, partly because of the complexity of developing and evaluating mathematical predictive models.<sup>46,47</sup> A recent analysis showed that an MTB workflow including WES/whole-genome sequencing, RNA-Seq, and data interpretation by a multidisciplinary board required a turnaround time of 6 weeks.<sup>48</sup> Using high-dimensional molecular data, the Molecular Screening for Cancer Treatment Optimization (MOSCATO-01) trial reported actionable mutations in less than half of the patients with advanced solid tumors,<sup>49</sup> and in the National Cancer Institute Molecular Analysis for Therapy Choice (NCI-MATCH) trial, only 9% of the patients could be assigned to one of the prespecified treatment arms.<sup>50</sup> In contrast, our approach of customized molecular diagnostic testing with restricted use of extended genetic analyses (WES, RNA-Seq) allows a faster turnover with comparable rates of genetically matched treatment recommendations. Therefore, average costs per case can be reduced at least by half when compared with performing extended molecular analysis for each patient. We identified actionable targets in 52.5% of cases and provided treatment recommendations with a median turnaround time of 28 days. To improve standardization and turnaround time, we recently implemented SOPs for diagnostic work-ups (Data Supplement). Our approach shares similarities with Memorial Sloan Kettering-Integrated Mutation Profiling of Actionable Cancer Targets (MSK-IMPACT), focusing on therapeutically targetable biomarkers for fast clinical decision making and referral of patients to available clinical trials.<sup>51</sup>

Targeted drug combinations might offer better DCR over single-agent therapies.<sup>52-55</sup> In part, this is due to crosstalk between signaling pathways as well as spatial and temporal clonal heterogeneity, especially in patients with advanced cancer who failed standard-of-care treatment.<sup>56,57</sup> Most current programs for precision oncology use prespecified, genetically matched, single-agent treatments (NCI-MATCH, [ClinicalTrials.gov](http://ClinicalTrials.gov) identifier: NCT02465060; or Targeted Agent and Profiling Utilization Registry [TAPUR], [ClinicalTrials.gov](http://ClinicalTrials.gov) identifier: NCT02693535). In our series, three of 19

treatments that successfully controlled disease (15.8%) included molecular combination treatments (Fig 2). These patients did not suffer from grade 3 to 4 adverse effects, although treatment combinations may bear a higher risk of toxicity.<sup>58</sup>

Earlier referral to an MTB (eg, after failure of first-line treatment) might prevent the institution of ineffective treatments, improve the implementation rate, and increase the likelihood of success of molecular biomarker-matched treatments. In our series, patient death, patient preference, or medical reasons precluded implementation in 23.3% of diagnostic and 68.3% of treatment recommendations. The survival analysis revealed a significant overall survival advantage for patients with implemented MTB treatment recommendations (median overall survival not reached; 95% CI, 9 months to not reached) compared with patients where recommendations were not pursued (8 months; 95% CI, 3 to 10 months;  $P = .002$ ) as well as for patients without treatment recommendation (10 months; 95% CI, 7 to 17 months;  $P = .008$ ). Because of the low sample size and the heterogeneous composition of patients in the cohorts, the validity of this survival analysis is limited.

Access to molecular biomarker-matched, off-label agents for cancer treatment is limited. In a recent single-center study, only 5% of molecular biomarker-matched treatment recommendations were implemented, mainly because of limited access to clinical trials or to restricted use of drugs outside their marketed label.<sup>59</sup> Thus, it is crucial to build up platforms for patients and treating physicians to link individual molecular information of the tumor to appropriate nonapproved drugs and available clinical trials. To this end, MTB networks might implement SOPs for diagnostic work-ups and data interpretation and build alliances to governmental institutions and insurance companies to generate

criteria for the financial coverage of molecular analyses and off-label treatments. Finally, an MTB is predestined to generate knowledge and evidence in oncology via single-person trials instead of large, time- and cost-intensive clinical trials. In case of sequence variants with undetermined significance, precision oncology workflows should allow fast reverse translation of sequence variants into informative preclinical models. In a patient with melanoma, we identified a kinase-inactivating *BRAF* mutation (Data Supplement). In vitro characterization indicated antitumor activity of combined pan-RAF and mitogen-activated protein kinase kinase inhibition and guided successful treatment with sorafenib and trametinib. In rare entities, and especially in the setting of treatment-refractory cancers, precision oncology networks should allow hypothesis-driven in vitro studies and validation in small sets of individuals. Thus, within the concept of patient-centric, biomarker-driven trial designs,<sup>60</sup> an MTB might constitute a critical tool to identify informative patients for clinical trials of targeted therapies in rare molecular subgroups.

In summary, this MTB experience illustrates that patient management, on the basis of individual molecular biomarker profiling and analysis, is feasible in patients beyond standard-of-care treatment. We show a high proportion of trial- and off-label treatment recommendations (86.5%) and a DCR for off-label treatments of 7.1%. In cases where no approved treatment is available, an MTB might allow molecular biomarker-matched off-label use of approved drugs across entity barriers or alternatively facilitate the access to therapeutic basket trials.

DOI: <https://doi.org/10.1200/PO.18.00105>

Published online on [ascopubs.org/journal/po](https://ascopubs.org/journal/po) on August 16, 2018.

#### AUTHOR CONTRIBUTIONS

**Conception and design:** Rouven Hoefflin, Ralph Fritsch, Rainer Claus, Julius Wehrle, Meike Reiser, Cornelius Miething, Christoph Peters, Martin Werner, Justus Duyster, Tilman Brummer, Silke Lassmann, Nikolas von Bubnoff

**Financial support:** Martin Werner, Silke Lassmann

**Administrative support:** Rouven Hoefflin, Rainer Claus, Martin Boeker, Melanie Boerries

**Provision of study material or patients:** Julius Wehrle, Dagmar von Bubnoff, Isabell Ge, Steffen Heeg, Martin Boeker, Simone Hettmer, Silke Lassmann

**Collection and assembly of data:** Rouven Hoefflin, Anna-Lena Geißler, Ralph Fritsch, Rainer Claus, Meike Reiser, Leman Mehmed, Lisa Fauth, Dieter Henrik Heiland, Friedrich Stock, Agnes Csanadi, Cornelius Miething, Britta Weddeling, Frank Meiss, Dagmar von Bubnoff, Christine Dierks, Isabell Ge, Steffen Heeg, Henning Schäfer, Justyna Rawluk, Gian Kayser, Simone Hettmer, Justus Duyster, Melanie Boerries, Silke Lassmann, Nikolas von Bubnoff

**Data analysis and interpretation:** Rouven Hoefflin, Anna-Lena Geißler, Ralph Fritsch, Rainer Claus, Julius Wehrle, Patrick Metzger, Meike Reiser, Lisa Fauth, Thalia Erbes, Cornelius Miething, Britta Weddeling, Volker Brass, Henning Schäfer, Martin Boeker, Justyna Rawluk, Elke Maria Botzenhart, Gian Kayser, Hauke Busch, Martin Werner, Justus Duyster, Tilman Brummer, Melanie Boerries, Silke Lassmann, Nikolas von Bubnoff

**Manuscript writing:** All authors

**Final approval of manuscript:** All authors

#### AUTHORS' DISCLOSURES OF POTENTIAL CONFLICTS OF INTEREST

The following represents disclosure information provided by authors of this manuscript. All relationships are considered compensated. Relationships are self-held unless noted.

I = Immediate Family Member, Inst = My Institution.

Relationships may not relate to the subject matter of this manuscript. For more information about ASCO's conflict of interest policy, please refer to [www.asco.org/rwc](http://www.asco.org/rwc) or [ascopubs.org/po/author-center](http://ascopubs.org/po/author-center).

#### **Rouven Hoefflin**

**Employment:** Roche Pharma AG (I)

#### **Anna-Lena Geißler**

No relationship to disclose

#### **Ralph Fritsch**

**Honoraria:** Genentech, Servier, Merck, Amgen

**Consulting or Advisory Role:** Genentech

**Travel, Accommodations, Expenses:** Amgen, Celgene, Servier, Merck

#### **Rainer Claus**

**Stock and Other Ownership Interests:** Medigene, Evotec

**Honoraria:** Roche, Abbvie, Novartis, Janssen Oncology, Gilead Sciences

**Consulting or Advisory Role:** Abbvie, Roche, Janssen Oncology

**Speakers' Bureau:** Janssen Oncology, Roche

**Travel, Accommodations, Expenses:** Janssen Oncology, Abbvie

#### **Julius Wehrle**

**Travel, Accommodations, Expenses:** PharmaMar, Novartis

#### **Patrick Metzger**

No relationship to disclose

#### **Meike Reiser**

**Travel, Accommodations, Expenses:** AstraZeneca

#### **Leman Mehmed**

No relationship to disclose

#### **Lisa Fauth**

No relationship to disclose

#### **Dieter Henrik Heiland**

No relationship to disclose

#### **Thalia Erbes**

**Honoraria:** Roche, Novartis, Teva, Pfizer, AstraZeneca, Eisai

#### **Friedrich Stock**

No relationship to disclose

#### **Agnes Csanadi**

No relationship to disclose

#### **Cornelius Miething**

**Consulting or Advisory Role:** Roche Pharma AG, Novartis

**Travel, Accommodations, Expenses:** Celgene

#### **Britta Weddeling**

No relationship to disclose

#### **Frank Meiss**

**Honoraria:** Bristol-Myers Squibb, Novartis, MSD Oncology

**Consulting or Advisory Role:** Bristol-Myers Squibb, Novartis

**Travel, Accommodations, Expenses:** Novartis, Bristol-Myers Squibb

#### **Dagmar von Bubnoff**

**Honoraria:** Roche, iOMEDICO AG

**Travel, Accommodations, Expenses:** Bristol-Myers Squibb

#### **Christine Dierks**

No relationship to disclose

#### **Isabell Ge**

No relationship to disclose

#### **Volker Brass**

No relationship to disclose

#### **Steffen Heeg**

No relationship to disclose

#### **Henning Schäfer**

**Honoraria:** Genentech

**Consulting or Advisory Role:** Bristol-Myers Squibb

**Travel, Accommodations, Expenses:** Bristol-Myers Squibb

#### **Martin Boeker**

No relationship to disclose

#### **Justyna Rawluk**

**Consulting or Advisory Role:** Roche Pharma AG, Takeda, Boehringer Ingelheim, MSD, Bristol-Myers Squibb, Chugai Pharma, AstraZeneca

#### **Elke Maria Botzenhart**

No relationship to disclose

#### **Gian Kayser**

No relationship to disclose

#### **Simone Hettmer**

No relationship to disclose

**Hauke Busch**  
No relationship to disclose

**Christoph Peters**  
**Leadership:** University Medical Center Freiburg  
**Honoraria:** University Medical Center Freiburg  
**Travel, Accommodations, Expenses:** Novartis

**Martin Werner**  
**Honoraria:** Diakovere  
**Consulting or Advisory Role:** Roche, Novartis, Johnson & Johnson  
**Research Funding:** Agilent (Inst), Novartis (Inst), Roche (Inst)

**Justus Duyster**  
**Honoraria:** Novartis, Genentech, Pfizer  
**Consulting or Advisory Role:** Novartis, Roche  
**Travel, Accommodations, Expenses:** Novartis

**Tilman Brummer**  
No relationship to disclose

**Melanie Boerries**  
No relationship to disclose

**Silke Lassmann**  
**Honoraria:** Novartis, AstraZeneca  
**Travel, Accommodations, Expenses:** Novartis, AstraZeneca

**Nikolas von Bubnoff**  
**Honoraria:** AstraZeneca, Amgen, Bristol-Myers Squibb  
**Consulting or Advisory Role:** Novartis  
**Research Funding:** Novartis  
**Travel, Accommodations, Expenses:** Novartis

#### ACKNOWLEDGMENT

We thank the team of the Genomics and Proteomics Core Facility, German Cancer Research Center/DKFZ, Heidelberg, Germany, for their sequencing service.

#### Affiliations

All authors: University of Freiburg, Freiburg; **Ralph Fritsch, Julius Wehrle, Cornelius Miething, Christoph Peters, Martin Werner, Justus Duyster, Tilman Brummer, Melanie Boerries, Silke Lassmann, and Nikolas von Bubnoff**, German Cancer Consortium, partner site Freiburg, and German Cancer Research Center, Heidelberg; **Rainer Claus**, Augsburg Medical Center, Augsburg; and **Hauke Busch**, University of Lübeck, Lübeck, Germany.

#### Support

Supported by Comprehensive Cancer Center Freiburg and by Deutsches Konsortium für Translationale Krebsforschung Grant No. L628 (N.v.B., S.L.). This work was also supported by Deutsche Forschungsgemeinschaft through Grant No. SFB 850, Z1 (H.B., M. Boerries, S.L.) and a Heisenberg professorship (T.B.); by the Federal Ministry for Education and Research through the framework of the e.Med research and funding concept, DeCaRe Grant No. FKZ 01ZX1409B (M. Boerries); the Federal Ministry for Education and Research Medical Informatics Initiative Consortium MIRACUM FKZ 01ZZ1606H (P.M., M. Boerries, M. Boeker); and the Berta-Ottenstein-Programme, Faculty of Medicine, University of Freiburg (R.H., J.W.).

#### REFERENCES

1. Chapman PB, Hauschild A, Robert C, et al: Improved survival with vemurafenib in melanoma with BRAF V600E mutation. *N Engl J Med* 364:2507-2516, 2011
2. Hoadley KA, Yau C, Wolf DM, et al: Multiplatform analysis of 12 cancer types reveals molecular classification within and across tissues of origin. *Cell* 158:929-944, 2014
3. Hyman DM, Puzanov I, Subbiah V, et al: Vemurafenib in multiple nonmelanoma cancers with BRAF V600 mutations. *N Engl J Med* 373:726-736, 2015
4. Borghaei H, Paz-Ares L, Horn L, et al: Nivolumab versus docetaxel in advanced nonsquamous non-small-cell lung cancer. *N Engl J Med* 373:1627-1639, 2015
5. Prahallad A, Sun C, Huang S, et al: Unresponsiveness of colon cancer to BRAF(V600E) inhibition through feedback activation of EGFR. *Nature* 483:100-103, 2012
6. Hong DS, Morris VK, El Osta B, et al: Phase IB study of vemurafenib in combination with irinotecan and cetuximab in patients with metastatic colorectal cancer with BRAFV600E mutation. *Cancer Discov* 6:1352-1365, 2016
7. Stones CJ, Kim JE, Joseph WR, et al: Comparison of responses of human melanoma cell lines to MEK and BRAF inhibitors. *Front Genet* 4:66, 2013
8. Lawrence MS, Stojanov P, Polak P, et al: Mutational heterogeneity in cancer and the search for new cancer-associated genes. *Nature* 499:214-218, 2013

9. Gerlinger M, Rowan AJ, Horswell S, et al: Intratumor heterogeneity and branched evolution revealed by multiregion sequencing. *N Engl J Med* 366:883-892, 2012
10. Xu X, Hou Y, Yin X, et al: Single-cell exome sequencing reveals single-nucleotide mutation characteristics of a kidney tumor. *Cell* 148:886-895, 2012
11. Siravegna G, Mussolin B, Buscarino M, et al: Clonal evolution and resistance to EGFR blockade in the blood of colorectal cancer patients. *Nat Med* 21:795-801, 2015 [Erratum: *Nat Med* 21:827, 2015]
12. Kobayashi S, Boggon TJ, Dayaram T, et al: EGFR mutation and resistance of non-small-cell lung cancer to gefitinib. *N Engl J Med* 352:786-792, 2005
13. Goss G, Tsai CM, Shepherd FA, et al: Osimertinib for pretreated EGFR Thr790Met-positive advanced non-small-cell lung cancer (AURA2): A multicentre, open-label, single-arm, phase 2 study. *Lancet Oncol* 17:1643-1652, 2016
14. Li MM, Datto M, Duncavage EJ, et al: Standards and guidelines for the interpretation and reporting of sequence variants in cancer: A joint consensus recommendation of the Association for Molecular Pathology, American Society of Clinical Oncology, and College of American Pathologists. *J Mol Diagn* 19:4-23, 2017
15. Hirsch B, Endris V, Lassmann S, et al: Multicenter validation of cancer gene panel-based next-generation sequencing for translational research and molecular diagnostics. *Virchows Arch* 472:557-565, 2018
16. Geißler AL, Geißler M, Kottmann D, et al: ATM mutations and E-cadherin expression define sensitivity to EGFR-targeted therapy in colorectal cancer. *Oncotarget* 8:17164-17190, 2017
17. Kovaleva V, Geissler AL, Lutz L, et al: Spatio-temporal mutation profiles of case-matched colorectal carcinomas and their metastases reveal unique de novo mutations in metachronous lung metastases by targeted next generation sequencing. *Mol Cancer* 15:63, 2016
18. Lek M, Karczewski KJ, Minikel EV, et al: Analysis of protein-coding genetic variation in 60,706 humans. *Nature* 536:285-291, 2016
19. Landrum MJ, Lee JM, Riley GR, et al: ClinVar: Public archive of relationships among sequence variation and human phenotype. *Nucleic Acids Res* 42:D980-D985, 2014
20. Forbes SA, Beare D, Gunasekaran P, et al: COSMIC: Exploring the world's knowledge of somatic mutations in human cancer. *Nucleic Acids Res* 43:D805-D811, 2015
21. Sherry ST, Ward M, Sirotkin K: dbSNP-database for single nucleotide polymorphisms and other classes of minor genetic variation. *Genome Res* 9:677-679, 1999
22. Sherry ST, Ward MH, Kholodov M, et al: dbSNP: The NCBI database of genetic variation. *Nucleic Acids Res* 29:308-311, 2001
23. Chang MT, Asthana S, Gao SP, et al: Identifying recurrent mutations in cancer reveals widespread lineage diversity and mutational specificity. *Nat Biotechnol* 34:155-163, 2016
24. Chang MT, Bhattarai TS, Schram AM, et al: Accelerating discovery of functional mutant alleles in cancer. *Cancer Discov* 8:174-183, 2018
25. Cotto KC, Wagner AH, Feng YY, et al: DGIdb 3.0: A redesign and expansion of the drug-gene interaction database. *Nucleic Acids Res* 46:D1068-D1073, 2017
26. Shihab HA, Gough J, Cooper DN, et al: Predicting the functional, molecular, and phenotypic consequences of amino acid substitutions using hidden Markov models. *Hum Mutat* 34:57-65, 2013
27. Reva B, Antipin Y, Sander C: Predicting the functional impact of protein mutations: Application to cancer genomics. *Nucleic Acids Res* 39:e118, 2011
28. González-Pérez A, López-Bigas N: Improving the assessment of the outcome of nonsynonymous SNVs with a consensus deleteriousness score, Condel. *Am J Hum Genet* 88:440-449, 2011

29. Chen Y, Cunningham F, Rios D, et al: Ensembl variation resources. *BMC Genomics* 11:293, 2010
30. Adzhubei IA, Schmidt S, Peshkin L, et al: A method and server for predicting damaging missense mutations. *Nat Methods* 7:248-249, 2010
31. Kumar P, Henikoff S, Ng PC: Predicting the effects of coding non-synonymous variants on protein function using the SIFT algorithm. *Nat Protoc* 4:1073-1081, 2009
32. Boeva V, Zinovyev A, Bleakley K, et al: Control-free calling of copy number alterations in deep-sequencing data using GC-content normalization. *Bioinformatics* 27:268-269, 2011
33. Dobin A, Davis CA, Schlesinger F, et al: STAR: Ultrafast universal RNA-seq aligner. *Bioinformatics* 29:15-21, 2013
34. Ritchie ME, Phipson B, Wu D, et al: limma powers differential expression analyses for RNA-sequencing and microarray studies. *Nucleic Acids Res* 43:e47, 2015
35. Law CW, Chen Y, Shi W, et al: voom: Precision weights unlock linear model analysis tools for RNA-seq read counts. *Genome Biol* 15:R29, 2014
36. Von Hoff DD, Stephenson JJ Jr, Rosen P, et al: Pilot study using molecular profiling of patients' tumors to find potential targets and select treatments for their refractory cancers. *J Clin Oncol* 28:4877-4883, 2010
37. Traer E, MacKenzie R, Snead J, et al: Blockade of JAK2-mediated extrinsic survival signals restores sensitivity of CML cells to ABL inhibitors. *Leukemia* 26:1140-1143, 2012
38. Larkin J, Ascierto PA, Dréno B, et al: Combined vemurafenib and cobimetinib in BRAF-mutated melanoma. *N Engl J Med* 371:1867-76, 2014
39. Sohal DP, Rini BI, Khorana AA, et al: Prospective clinical study of precision oncology in solid tumors. *J Natl Cancer Inst* 108:djv332, 2015
40. Johnson DB, Dahlman KH, Knol J, et al: Enabling a genetically informed approach to cancer medicine: A retrospective evaluation of the impact of comprehensive tumor profiling using a targeted next-generation sequencing panel. *Oncologist* 19:616-622, 2014
41. Dalton WB, Forde PM, Kang H, et al: Personalized medicine in the oncology clinic: Implementation and outcomes of the Johns Hopkins Molecular Tumor Board. *JCO Precision Oncol*: 10.1200/PO.16.00046, 2017
42. Rizvi NA, Hellmann MD, Snyder A, et al: Cancer immunology. Mutational landscape determines sensitivity to PD-1 blockade in non-small cell lung cancer. *Science* 348:124-128, 2015
43. McGranahan N, Furness AJ, Rosenthal R, et al: Clonal neoantigens elicit T cell immunoreactivity and sensitivity to immune checkpoint blockade. *Science* 351:1463-1469, 2016
44. Gibney GT, Weiner LM, Atkins MB: Predictive biomarkers for checkpoint inhibitor-based immunotherapy. *Lancet Oncol* 17:e542-e551, 2016
45. Gfeller D, Bassani-Sternberg M, Schmidt J, et al: Current tools for predicting cancer-specific T cell immunity. *OncoImmunology* 5:e1177691, 2016
46. McShane LM, Cavenagh MM, Lively TG, et al: Criteria for the use of omics-based predictors in clinical trials. *Nature* 502:317-320, 2013
47. Singer J, Irmisch A, Ruscheweyh HJ, et al: Bioinformatics for precision oncology. *Brief Bioinform*: bbx143, 2017
48. Horak P, Klink B, Heining C, et al: Precision oncology based on omics data: The NCT Heidelberg experience. *Int J Cancer* 141:877-886, 2017
49. Massard C, Michiels S, Féré C, et al: High-throughput genomics and clinical outcome in hard-to-treat advanced cancers: Results of the MOSCATO 01 trial. *Cancer Discov* 7:586-595, 2017
50. Conley BA, Gray R, Chen A, et al: NCI-molecular analysis for therapy choice (NCI-MATCH) clinical trial: interim analysis. Presented at American Association for Cancer Research 107th Annual Meeting 2016, New Orleans, LA, April 16-20, 2016

51. Cheng DT, Mitchell TN, Zehir A, et al: Memorial Sloan Kettering-Integrated Mutation Profiling of Actionable Cancer Targets (MSK-IMPACT): A hybridization capture-based next-generation sequencing clinical assay for solid tumor molecular oncology. *J Mol Diagn* 17:251-264, 2015
52. Tannock IF, Hickman JA: Limits to personalized cancer medicine. *N Engl J Med* 375:1289-1294, 2016
53. Yap TA, Omlin A, de Bono JS: Development of therapeutic combinations targeting major cancer signaling pathways. *J Clin Oncol* 31:1592-1605, 2013
54. Liu S, Nikanjam M, Kurzrock R: Dosing de novo combinations of two targeted drugs: Towards a customized precision medicine approach to advanced cancers. *Oncotarget* 7:11310-11320, 2016
55. Turner NC, Reis-Filho JS: Genetic heterogeneity and cancer drug resistance. *Lancet Oncol* 13:e178-e185, 2012
56. Swanton C, Govindan R: Clinical implications of genomic discoveries in lung cancer. *N Engl J Med* 374:1864-1873, 2016
57. Shi H, Hugo W, Kong X, et al: Acquired resistance and clonal evolution in melanoma during BRAF inhibitor therapy. *Cancer Discov* 4:80-93, 2014
58. Soria JC, Massard C, Izzedine H: From theoretical synergy to clinical supra-additive toxicity. *J Clin Oncol* 27:1359-1361, 2009
59. Beltran H, Eng K, Mosquera JM, et al: Whole-exome sequencing of metastatic cancer and biomarkers of treatment response. *JAMA Oncol* 1:466-474, 2015
60. Biankin AV, Piantadosi S, Hollingsworth SJ: Patient-centric trials for therapeutic development in precision oncology. *Nature* 526:361-370, 2015

## Appendix

**Fig A1.** Molecular Tumor Board (MTB) workflow. TOS, Tumorboard Online System.

