



THE UNIVERSITY *of* EDINBURGH

Edinburgh Research Explorer

## Neurological complications after first dose of COVID-19 vaccines and SARS-CoV-2 infection

### Citation for published version:

Patone, M, Handunnetthi, L, Saatci, D, Pan, J, Katikireddi, SV, Razvi, S, Hunt, D, Mei, XW, Dixon, S, Zaccardi, F, Khunti, K, Watkinson, P, Coupland, CAC, Doidge, J, Harrison, DA, Ramanan, R, Sheikh, A, Robertson, C & Hippisley-cox, J 2021, 'Neurological complications after first dose of COVID-19 vaccines and SARS-CoV-2 infection', *Nature Medicine*. <https://doi.org/10.1038/s41591-021-01556-7>

### Digital Object Identifier (DOI):

[10.1038/s41591-021-01556-7](https://doi.org/10.1038/s41591-021-01556-7)

### Link:

[Link to publication record in Edinburgh Research Explorer](#)

### Document Version:

Publisher's PDF, also known as Version of record

### Published In:

Nature Medicine

### General rights

Copyright for the publications made accessible via the Edinburgh Research Explorer is retained by the author(s) and / or other copyright owners and it is a condition of accessing these publications that users recognise and abide by the legal requirements associated with these rights.

### Take down policy

The University of Edinburgh has made every reasonable effort to ensure that Edinburgh Research Explorer content complies with UK legislation. If you believe that the public display of this file breaches copyright please contact [openaccess@ed.ac.uk](mailto:openaccess@ed.ac.uk) providing details, and we will remove access to the work immediately and investigate your claim.





OPEN

# Neurological complications after first dose of COVID-19 vaccines and SARS-CoV-2 infection

Martina Patone<sup>1,16</sup>, Lahiru Handunnetthi<sup>2,3,16</sup>, Defne Saatci<sup>1</sup>, Jiafeng Pan<sup>4</sup>, Srinivasa Vittal Katikireddi<sup>5</sup>, Saif Razvi<sup>6</sup>, David Hunt<sup>7</sup>, Xue W. Mei<sup>2</sup>, Sharon Dixon<sup>2</sup>, Francesco Zaccardi<sup>8</sup>, Kamlesh Khunti<sup>8</sup>, Peter Watkinson<sup>2,9</sup>, Carol A. C. Coupland<sup>2,10</sup>, James Doidge<sup>11,12</sup>, David A. Harrison<sup>11,12</sup>, Rommel Ravanan<sup>13</sup>, Aziz Sheikh<sup>4,14</sup>, Chris Robertson<sup>4,15</sup> and Julia Hippisley-Cox<sup>2</sup>✉

**Emerging reports of rare neurological complications associated with COVID-19 infection and vaccinations are leading to regulatory, clinical and public health concerns. We undertook a self-controlled case series study to investigate hospital admissions from neurological complications in the 28 days after a first dose of ChAdOx1nCoV-19 ( $n = 20,417,752$ ) or BNT162b2 ( $n = 12,134,782$ ), and after a SARS-CoV-2-positive test ( $n = 2,005,280$ ). There was an increased risk of Guillain-Barré syndrome (incidence rate ratio (IRR), 2.90; 95% confidence interval (CI): 2.15–3.92 at 15–21 days after vaccination) and Bell's palsy (IRR, 1.29; 95% CI: 1.08–1.56 at 15–21 days) with ChAdOx1nCoV-19. There was an increased risk of hemorrhagic stroke (IRR, 1.38; 95% CI: 1.12–1.71 at 15–21 days) with BNT162b2. An independent Scottish cohort provided further support for the association between ChAdOx1nCoV and Guillain-Barré syndrome (IRR, 2.32; 95% CI: 1.08–5.02 at 1–28 days). There was a substantially higher risk of all neurological outcomes in the 28 days after a positive SARS-CoV-2 test including Guillain-Barré syndrome (IRR, 5.25; 95% CI: 3.00–9.18). Overall, we estimated 38 excess cases of Guillain-Barré syndrome per 10 million people receiving ChAdOx1nCoV-19 and 145 excess cases per 10 million people after a positive SARS-CoV-2 test. In summary, although we find an increased risk of neurological complications in those who received COVID-19 vaccines, the risk of these complications is greater following a positive SARS-CoV-2 test.**

The coronavirus disease 19 (COVID-19) pandemic has seen the development and deployment of vaccines at an unprecedented speed and scale. Several vaccines including ChAdOx1nCoV-19 and BNT162b2 are approved for use in multiple countries and these have been shown to reduce COVID-19 infections, transmissions, hospitalizations and deaths in randomized controlled trials and real-world effectiveness studies<sup>1–6</sup>. However, the clinical trials were underpowered to detect rare adverse events<sup>3,4</sup> that are important for ongoing risk–benefit evaluations of these vaccines and for informing post-vaccination clinical practice. Therefore, the identification of such rare adverse events is now a global scientific priority.

The increased risk of cerebral venous sinus thrombosis following the ChAdOx1nCoV-19 vaccine is an example of a rare adverse neurological event<sup>7,8</sup>. These findings have prompted the United Kingdom, several European countries and two Canadian provinces to limit the use of the ChAdOx1nCoV-19 vaccine or restrict its use pending further risk–benefit analysis in those at low risk of severe outcomes from infection. Furthermore, two cases of transverse myelitis were identified in the treatment arm during ChAdOx1nCoV-19 clinical trials<sup>3</sup>. These cases triggered two temporary study pauses, including careful regulatory review by the UK's

Medicines and Healthcare Products Regulatory Agency (MHRA). One case of transverse myelitis was considered to be possibly causally related to the vaccine, and an association of rare neuroinflammatory side-effects with ChAdOx1nCoV-19 could not be ruled out.

Since the start of large-scale vaccine programs across the world, additional case reports have linked other neurological adverse events to COVID-19 vaccination, including Guillain-Barré syndrome<sup>9–11</sup>. Furthermore, surveillance studies have found a possible link between severe acute respiratory syndrome coronavirus 2 (SARS-CoV-2) infection and neurological events, including Guillain-Barré syndrome and myelitis<sup>12,13</sup>. However, case reports and surveillance studies are limited by small numbers, as well as potential selection and recording biases. Therefore, detailed assessments of potential neurological adverse events associated with COVID-19 vaccines and infection are urgently needed.

The English National Immunisation (NIMS) Database of COVID-19 vaccination includes data on vaccine type, date and doses for all people vaccinated in England. We linked NIMS, at the individual patient level, to national data for mortality, hospital admissions and SARS-CoV-2 infection data to examine the associations between the first dose of ChAdOx1nCoV-19 or BNT162b2 vaccines and neurological complications: acute central nervous

<sup>1</sup>Nuffield Department of Primary Health Care Sciences, University of Oxford, Oxford, UK. <sup>2</sup>Nuffield Department of Clinical Neurosciences, University of Oxford, Oxford, UK. <sup>3</sup>Wellcome Centre for Human Genetics, University of Oxford, Oxford, UK. <sup>4</sup>Department of Mathematics and Statistics, University of Strathclyde, Glasgow, UK. <sup>5</sup>MRC/CSO Social and Public Health Sciences Unit, University of Glasgow, Glasgow, UK. <sup>6</sup>Institute of Neurological Sciences, Glasgow, UK. <sup>7</sup>Centre for Clinical Brain Sciences and UK Dementia Research Institute, University of Edinburgh, Edinburgh, UK. <sup>8</sup>Leicester Real World Evidence Unit, Leicester Diabetes Centre, University of Leicester, Leicester, UK. <sup>9</sup>NIHR Biomedical Research Centre, Oxford University Hospitals NHS Trust, Oxford, UK. <sup>10</sup>Division of Primary Care, School of Medicine, University of Nottingham, Nottingham, UK. <sup>11</sup>Intensive Care National Audit and Research Centre, London, UK. <sup>12</sup>London School of Hygiene and Tropical Medicine, London, UK. <sup>13</sup>NHS Blood and Transplant, Bristol, UK. <sup>14</sup>Usher Institute, University of Edinburgh, Edinburgh, UK. <sup>15</sup>Public Health Scotland, Glasgow, UK. <sup>16</sup>These authors contributed equally: Martina Patone, Lahiru Handunnetthi. ✉e-mail: [julia.hippisley-cox@phc.ox.ac.uk](mailto:julia.hippisley-cox@phc.ox.ac.uk)

**Table 1 | Baseline demographic characteristics of people receiving either ChAdOx1nCoV-19 or BNT162b2 vaccines or testing positive to SARS-CoV-2 virus (in those vaccinated with either vaccine), in England between 1 December 2020 and 31 May 2021**

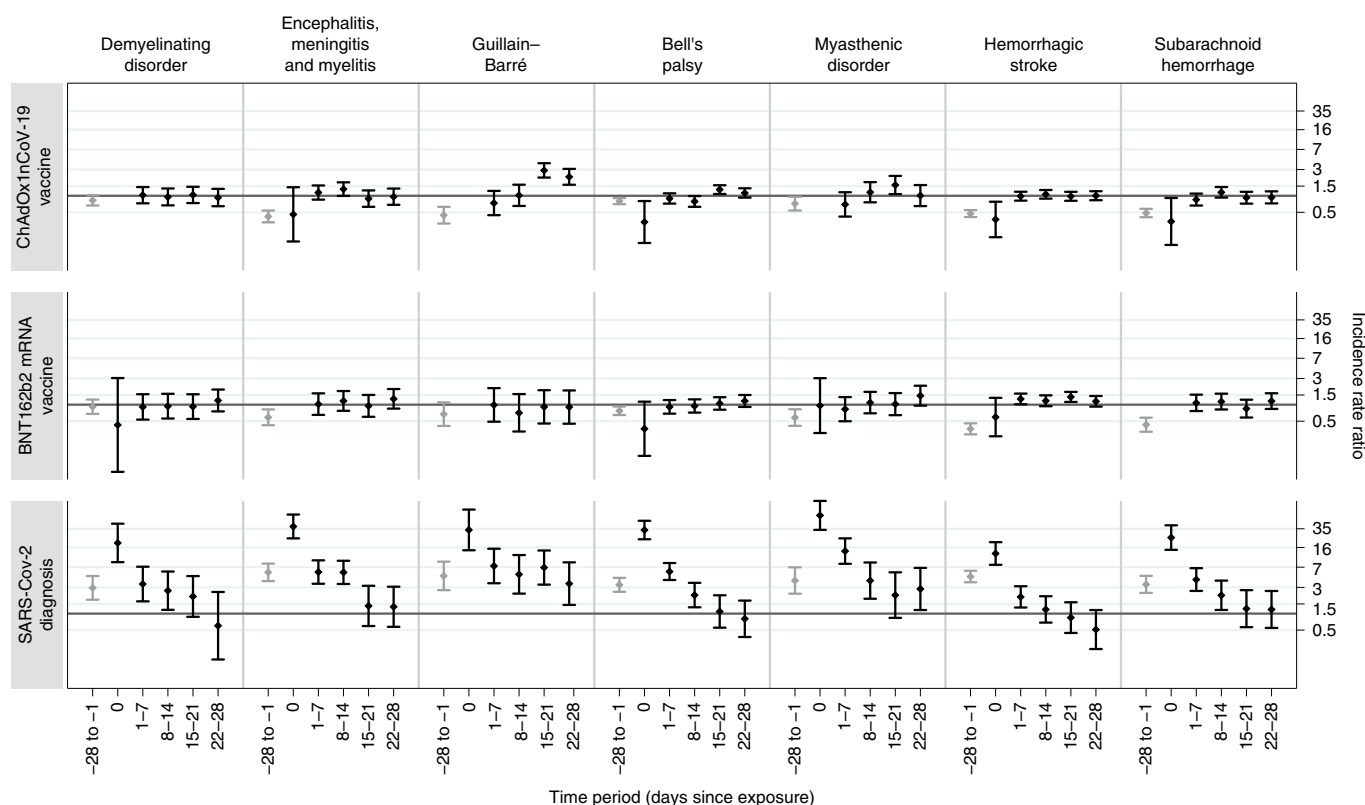
	ChAdOx1nCoV-19 vaccine	BNT162b2 mRNA vaccine	Positive SARS-CoV-2 test (in those vaccinated)
	% (n)	% (n)	% (n)
Total number of people	20,417,752	12,134,782	2,005,280
<b>Sex</b>			
Female	49.7 (10,150,568)	54.5 (6,608,730)	55.5 (1,113,100)
Male	45.3 (9,240,726)	41.0 (4,978,327)	40.6 (814,383)
Sex not recorded	5.0 (1,026,458)	4.5 (547,725)	3.9 (77,797)
<b>Age groups (years)</b>			
Mean (s.d.)	55.1 (14.8)	55.9 (20.1)	50.1 (16.9)
16–29	5.2 (1,063,302)	8.7 (1,061,130)	11.3 (226,312)
30–39	7.9 (1,610,998)	21.4 (2,598,709)	17.1 (342,943)
40–49	21.8 (4,442,963)	11.5 (1,399,336)	21.9 (438,788)
50–59	27.4 (5,593,753)	12.5 (1,521,131)	23.9 (479,082)
60–69	19.8 (4,042,273)	14.1 (1,714,392)	12.9 (259,429)
70–79	13.7 (2,803,106)	16.0 (1,942,863)	6.4 (128,302)
80–89	3.2 (646,397)	13.4 (1,620,062)	4.5 (90,947)
90+	1.1 (214,960)	2.3 (277,159)	2.0 (39,477)
<b>Ethnicity</b>			
White	72.4 (14,777,834)	74.1 (8,986,385)	70.0 (1,402,843)
Indian	2.2 (448,696)	2.7 (324,499)	4.0 (80,762)
Pakistani	1.3 (274,143)	1.3 (155,524)	3.0 (61,018)
Bangladeshi	0.6 (117,396)	0.4 (53,690)	1.1 (22,900)
Other Asian	1.0 (207,130)	1.2 (145,342)	1.8 (35,373)
Black Caribbean	0.6 (124,735)	0.5 (61,242)	0.7 (13,789)
Black African	1.1 (228,758)	1.0 (121,497)	1.6 (32,185)
Chinese	0.4 (75,432)	0.4 (45,604)	0.2 (4,374)
Other ethnic group	1.9 (387,650)	1.9 (231,506)	2.6 (51,763)
Ethnicity not recorded	18.5 (3,775,978)	16.6 (2,009,493)	15.0 (300,273)
<b>Neurological history</b>			
Acute CNS demyelinating events	<0.1 (3,628)	<0.1 (2,028)	<0.1 (463)
Prior encephalitis, meningitis and myelitis	<0.1 (4,322)	<0.1 (2,431)	<0.1 (855)
Prior Guillain-Barré syndrome	<0.1 (1,855)	<0.1 (1,226)	<0.1 (294)
Prior Bell's palsy	<0.1 (9,275)	0.1 (6,200)	0.1 (1,396)
Prior myasthenic disorder	<0.1 (3,129)	<0.1 (2,609)	<0.1 (461)
Prior hemorrhagic stroke	<0.1 (6,517)	<0.1 (4,064)	0.1 (1,318)
Prior subarachnoid hemorrhage	<0.1 (5,350)	<0.1 (2,776)	<0.1 (822)

system (CNS) demyelinating events, encephalitis meningitis and myelitis, Guillain-Barré syndrome, Bell's palsy, myasthenic disorders, hemorrhagic stroke and subarachnoid hemorrhage. We use the same population to investigate the associations between a positive SARS-CoV-2 test as a secondary exposure and the same neurological conditions. Incidence rate ratios (IRRs), that is, the rates of hospital admission or death from each neurological outcome in the risk period after vaccination or after a positive test relative to the baseline period, were estimated using the self-controlled case series (SCCS) methodology (Fig. 2)<sup>14,15</sup>. A relative incidence greater than 1 indicates an increased risk after vaccination or a SARS-CoV-2-positive test. We also carried out an independent replication of the risk of neurological outcomes in a national cohort from Scotland using the SCCS design.

## Results

Overall, 32,552,534 people received their first dose of COVID19 vaccine (ChAdOx1nCoV-19,  $n = 20,417,752$ ; BNT162b2,  $n = 12,134,782$ ) in England between 1 December 2020 and 31 May 2021. In the population of vaccinated people, 2,005,280 (~6%) had a SARS-CoV-2-positive test. Of those with a positive test, 1,838,628 (~91%) had their SARS-CoV-2 test prior to vaccination. The baseline characteristics of the study population are listed in Table 1.

The results for the investigated neurological outcomes following each exposure (ChAdOx1nCoV-19, BNT162b2 and positive SARS-CoV-2 test) are given for pre-specified time periods: 0, 1–7, 8–14, 15–21 and 22–28 days, as well as collectively for the 1–28 day period. The baseline characteristics of people who had these neurological outcomes are listed in Table 2. The IRRs for each outcome



**Fig. 1 | IRRs and 95% CIs for neurological outcomes following ChAdOx1nCoV-19 vaccination, BNT162b2 vaccination and positive SARS-CoV-2 test.**

The IRRs are presented for pre-defined risk periods (0, 1–7, 8–14, 15–21 and 22–28 days) after each exposure and for the pre-risk period (28 days prior to exposure) and computed using a population of  $n = 32,553,534$  vaccinated individuals. The horizontal bold line indicates an IRR of 1.

in the risk periods immediately before and after each exposure are given in Table 3 and Fig. 1.

**Neurological outcomes. Acute CNS demyelinating events.** A total of 1,105 people had a hospital admission with an acute CNS demyelinating event. Of these, 131 (11.9%) had a positive SARS-CoV-2 test including 121 (10.9%) who had a positive test prior to vaccination. There were fewer than five deaths overall. There was no association between the ChAdOx1nCoV-19 or BNT162b2 vaccination and admission with an acute CNS demyelinating event in any of the pre-defined 7 day risk periods. There was an increased risk of hospital admission or death for acute CNS demyelinating events on the day of a positive SARS-CoV-2 test (IRR, 19.34; 95% CI: 8.63–43.38), and 1–7 days (IRR, 3.45; 95% CI: 1.67–7.14) and 8–14 days (IRR, 2.61; 95% CI: 1.17–5.84) after a positive test. In the 1–28 days post-exposure period we did not observe any association with ChAdOx1nCoV-19 (IRR, 0.97; 95% CI: 0.78–1.22) or with BNT162b2 (IRR, 1.02; 95% CI: 0.75–1.40), but a possible association with SARS-CoV-2 infection was observed (IRR, 1.67; 95% CI: 0.93–3.00).

**Encephalitis, meningitis and myelitis.** Encephalitis-, meningitis- and myelitis-related admissions occurred in 1,285 people. Of these, 255 (19.8%) had a SARS-CoV-2-positive test including 213 (16.6%) who had a positive test prior to vaccination. There were 39 deaths (in six of which the SARS-CoV-2 test was positive). There was a trend towards increased risk of encephalitis, meningitis and myelitis after ChAdOx1nCoV-19 vaccination (IRR, 1.32; 95% CI: 0.99–1.76 at 8–14 days) and no association with the BNT162b2 vaccine in any of the 7 day risk periods. There was an increased risk of hospital admission or death for this outcome on the day of a SARS-CoV-2-positive test (IRR, 38.57; 95% CI: 23.41–63.56), and 1–7 days

(IRR, 5.71; 95% CI: 3.49–9.32) and 8–14 days (IRR, 5.63; 95% CI: 3.64–9.15) after the positive test. In the 1–28 days post-exposure period we did not observe an association with ChAdOx1nCoV-19 (IRR, 1.07; 95% CI: 0.87–1.31) or with BNT162b2 (IRR, 1.14; 95% CI: 0.86–1.51), but an association with SARS-CoV-2 infection was identified (IRR, 2.07; 95% CI: 1.78–4.11).

**Guillain-Barré syndrome.** Guillain-Barré syndrome-related admissions occurred in 622 people. Of these, 110 (17.7%) had a positive SARS-CoV-2 test including 99 (15.9%) who had a positive test prior to vaccination. There were 11 deaths (SARS-CoV-2 test was not positive in any of these deaths). There was an increased risk of hospital admission or death for Guillain-Barré syndrome at 15–21 days (IRR, 2.90; 95% CI: 2.15–3.92) and 22–28 days (IRR, 2.21; 95% CI: 1.59–3.09) following the first dose of ChAdOx1nCoV-19. No association was found with the BNT162b2 vaccine. There was an increased risk of Guillain-Barré syndrome following a positive SARS-CoV-2 test (IRR, 33.37; 95% CI: 14.21–78.36 at day 0; IRR, 7.36; 95% CI: 3.57–15.18 at 1–7 days; IRR, 5.19; 95% CI: 2.31–11.65 at 8–14 days; IRR, 6.89; 95% CI: 3.37–14.09 at 15–22 days; IRR, 3.51; 95% CI: 1.44–8.57 at 22–28 days). In the 1–28 days post-vaccination period we found an increased risk of Guillain-Barré syndrome after ChAdOx1nCoV-19 vaccination (IRR, 2.04; 95% CI: 1.60–2.60) but not after BNT162b2 vaccination (IRR, 0.86; 95% CI: 0.54–1.36). Also, an increased risk of Guillain-Barré syndrome was observed in the 1–28 days period after a SARS-CoV-2-positive test (IRR, 5.25; 95% CI: 3.00–9.18).

**Bell's palsy.** There were 3,249 people admitted to hospital with Bell's palsy. Of these, 391 (12.0%) had a positive SARS-CoV-2 test including 334 (10.3%) who had a positive test prior to vaccination. There were no deaths. There was an increased risk of hospital admission for

**Table 2 | Demographic characteristics of patients who had the individual outcomes in the 28 days following a COVID-19 vaccine first dose or SARS-CoV-2 infection in the vaccinated population in England from 1 December 2020 to 31 May 2021**

	Acute CNS demyelinating events			Encephalitis, meningitis and myelitis			Guillain-Barré			
	ChAdOx1n CoV-19 vaccine	BNT162b2 mRNA vaccine	Positive SARS- CoV-2 test	ChAdOx1n CoV-19 vaccine	BNT162b2 mRNA vaccine	Positive SARS-CoV-2 test	ChAdOx1n CoV-19 vaccine	BNT162b2 mRNA vaccine	Positive SARS- CoV-2 test	
	% (n)	% (n)	% (n)	% (n)	% (n)	% (n)	% (n)	% (n)	% (n)	
Total number of people	144	69	31	188	97	83	153	34	43	
Women	57.6 (83)	65.2 (45)	54.8 (17)	58.5 (110)	56.7 (55)	45.8 (38)	45.1 (69)	44.1 (15)	46.5 (20)	
Men	42.4 (61)	34.8 (24)	45.2 (14)	41.5 (78)	43.3 (42)	54.2 (45)	54.9 (84)	55.9 (19)	53.5 (23)	
Age groups (years)										
Mean (s.d.)	55.6 (15.8)	59.0 (15.3)	59.9 (18.9)	58.9 (16.9)	66.8 (19.1)	57.4 (15.5)	60.6 (13.5)	67.0 (17.1)	60.0 (15.0)	
16–29	7.6 (11)	*		4.3 (8)	6.2 (6)	*	*	*		
30–39	10.4 (15)	*	16.1 (5)	12.8 (24)	5.2 (5)	10.8 (9)	6.5 (10)	0	*	
40–49	13.2 (19)	13.0 (9)	22.6 (7)	12.2 (23)	6.2 (6)	14.5 (12)	11.1 (17)	*	16.3 (7)	
50–59	25.0 (36)	24.6 (17)	*	18.6 (35)	15.5 (15)	25.3 (21)	24.8 (38)	*	23.3 (10)	
60–69	25.0 (36)	31.9 (22)	16.1 (5)	20.7 (39)	12.4 (12)	20.5 (17)	30.1 (46)	17.6 (6)	27.9 (12)	
70–79	15.3 (22)	7.2 (5)	19.4 (6)	19.1 (36)	22.7 (22)	18.1 (15)	19.6 (30)	35.3 (12)	11.6 (5)	
80–89	*	13.0 (9)	16.1 (5)	10.1 (19)	26.8 (26)	6.0 (5)	5.2 (8)	14.7 (5)	*	
90+	*	*	*	*	5.2 (5)	*	*	*	*	
Positive SARS-CoV-2 test										
Before vaccination	10.4 (15)	8.7 (6)	–	6.9 (13)	5.1 (5)	–	5.2 (8)	*	–	
After vaccination	*	7.2 (5)	–	6.9 (13)	10.3 (10)	–	*	*	–	
		Bell's palsy			Myasthenic disorder			Hemorrhagic stroke		
	ChAdOx1n CoV-19 vaccine	BNT162b2 mRNA vaccine	Positive SARS- CoV-2 test	ChAdOx1n CoV-19 vaccine	BNT162b2 mRNA vaccine	Positive SARS- CoV-2 test	ChAdOx1n CoV-19 vaccine	BNT162b2 mRNA vaccine	Positive SARS- CoV-2 test	
	% (n)	% (n)	% (n)	% (n)	% (n)	% (n)	% (n)	% (n)	% (n)	
Total number of people	435	250	112	99	94	67	533	385	73	
Women	52.4 (228)	55.2 (138)	42.9 (48)	45.5 (45)	37.2 (35)	29.9 (20)	55.2 (294)	55.1 (212)	47.9 (35)	
Men	47.6 (207)	44.8 (112)	57.1 (64)	54.5 (54)	62.8 (59)	70.1 (47)	44.8 (239)	44.9 (173)	52.1 (38)	
Age groups (years)										
Mean (s.d.)	62.6 (15.5)	70.8 (15.2)	67.1 (15.8)	67.2 (15.2)	72.7 (15.8)	66.8 (14.3)	70.9 (14.4)	77.5 (11.7)	69.0 (17.5)	
16–29	2.5 (11)	*	*	*	*	*	1.5 (8)	*	*	
30–39	5.3 (23)	2.0 (5)	4.5 (5)	*	*	*	1.1 (6)	1.3 (5)	*	
40–49	9.2 (40)	4.4 (11)	4.5 (5)	6.1 (6)	*	*	4.5 (24)	1.3 (5)	12.3 (9)	
50–59	26.9 (117)	16.8 (42)	18.8 (21)	13.1 (13)	7.4 (7)	13.4 (9)	14.4 (77)	4.9 (19)	8.2 (6)	
60–69	20.7 (90)	16.8 (42)	27.7 (31)	28.3 (28)	13.8 (13)	29.9 (20)	19.5 (104)	11.2 (43)	11.0 (8)	
70–79	20.7 (90)	20.8 (52)	18.8 (21)	27.3 (27)	27.7 (26)	28.4 (19)	30.6 (163)	28.6 (110)	28.8 (21)	
80–89	10.6 (46)	30.0 (75)	17.9 (20)	17.2 (17)	35.1 (33)	13.4 (9)	20.8 (111)	41.0 (158)	23.3 (17)	
90+	4.1 (18)	7.6 (19)	6.3 (7)	*	6.4 (6)	*	7.5 (40)	11.4 (44)	9.6 (7)	
Positive SARS-CoV-2 test										
Before vaccination	8.7 (38)	7.2 (18)	–	7.1 (7)	*	–	8.1 (43)	3.7 (14)	–	
After vaccination	3.2 (14)	4.4 (11)	–	*	11.7 (11)	–	3.6 (19)	8.31 (32)	–	

Continued

**Table 2 | Demographic characteristics of patients who had the individual outcomes in the 28 days following a COVID-19 vaccine first dose or SARS-CoV-2 infection in the vaccinated population in England from 1 December 2020 to 31 May 2021 (continued)**

	Subarachnoid hemorrhage		
	ChAdOx1nCoV-19 vaccine	BNT162b2 mRNA vaccine	Positive SARS-CoV-2 test
	% (n)	% (n)	% (n)
Total number of people	308	151	68
Women	54.5 (168)	62.9 (95)	50.1 (34)
Men	45.1 (139)	36.4 (55)	50.1 (34)
Not recorded	0.3 (1)	0.7 (1)	0
Age (years)			
Mean (s.d.)	63.5 (15.5)	69.7 (14.2)	64.5 (17.2)
16–29	2.6 (8)	*	*
30–39	3.9 (12)	3.3 (5)	8.8 (6)
40–49	9.1 (28)	*	11.8 (8)
50–59	25.6 (79)	17.2 (26)	17.2 (26)
60–69	23.7 (73)	19.2 (29)	19.2 (29)
70–79	18.2 (56)	27.8 (42)	26.5 (18)
80–89	12.7 (39)	25.8 (39)	14.7 (10)
90+	4.2 (13)	*	*
Positive SARS-CoV-2 test			
Before vaccination	9.1 (28)	6.6 (10)	
After vaccination	3.6 (11)	6.0 (9)	

\*Cells with <5 are suppressed.

Bell's palsy at 15–21 days after the first dose of ChAdOx1nCoV-19 (IRR, 1.29; 95% CI: 1.08–1.56). No association was found with the BNT162b2 vaccine. There was an increased risk of Bell's palsy following a positive SARS-CoV-2 test (IRR, 33.23; 95% CI: 22.57–48.94 at day 0; IRR, 5.84; 95% CI: 4.09–8.33 at 1–7 days; IRR, 2.17; 95% CI: 1.30–3.63 at 8–14 days). In the 1–28 days post-exposure period we did not observe any association with ChAdOx1nCoV-19 (IRR, 1.07; 95% CI: 0.94–1.21), BNT162b2 (IRR, 1.06; 95% CI: 0.90–1.26) or SARS-CoV-2 infection (IRR, 1.34; 95% CI: 0.91–1.97). In the cohort of patients with Bell's palsy, a small proportion (6%) had a suspected concurrent diagnosis of cerebral infarction. We undertook a post-hoc sensitivity analysis excluding these people but the results did not change from the main analysis, as shown in Supplementary Table 1.

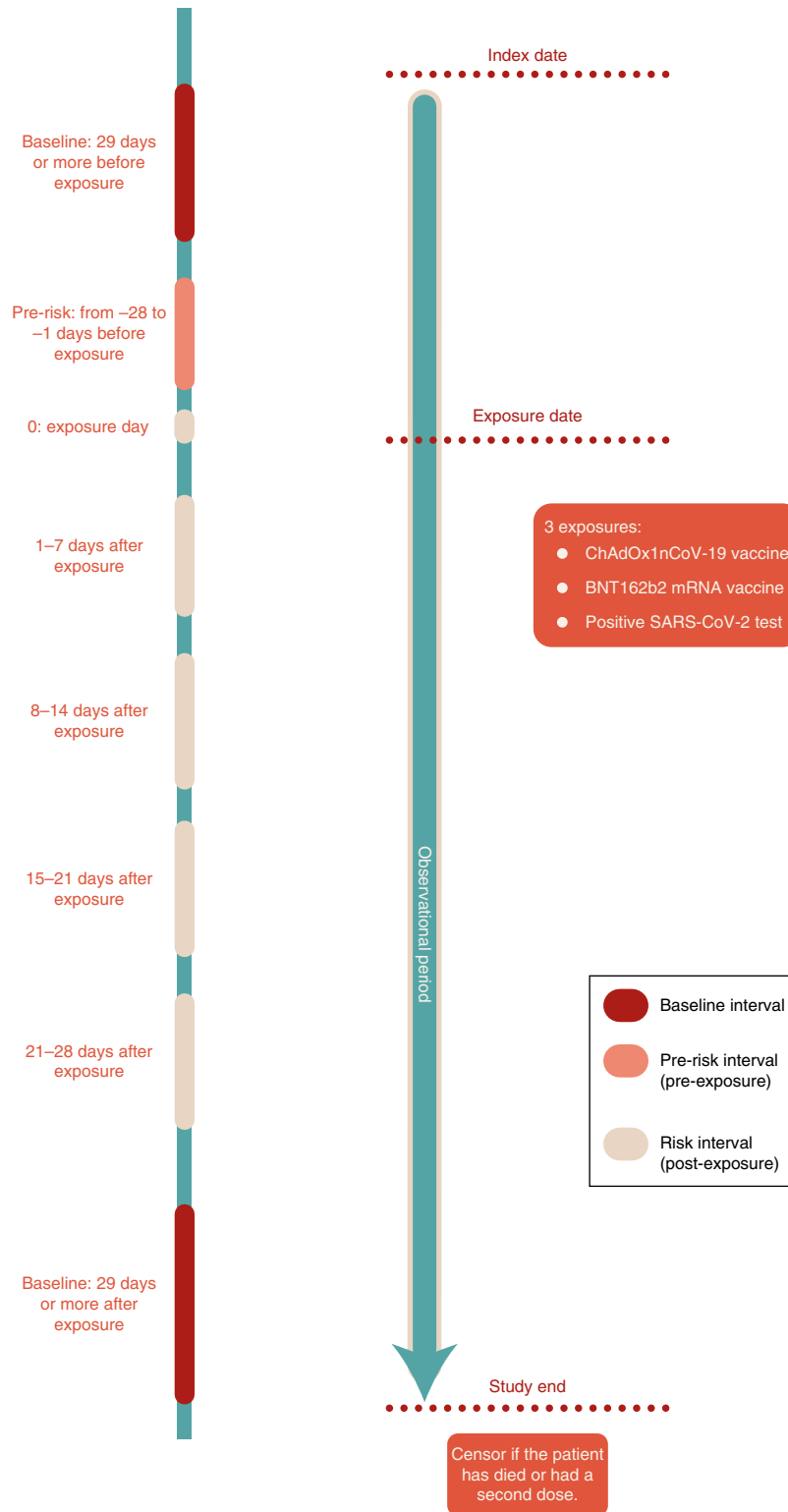
**Myasthenic disorder.** There were 831 hospital admissions for myasthenic disorder. Of these, 137 people (16.5%) had a positive SARS-CoV-2 test including 110 (13.2%) who had a positive test prior to vaccination. There were 30 deaths (in 10 of which the SARS-CoV-2 test was positive). There was an increased risk of hospital admission or death for myasthenic disorder at 15–21 days after the first dose of ChAdOx1nCoV-19 (IRR, 1.57; 95% CI: 1.07–2.30). No association was found with the BNT162b2 vaccine. There was an increased risk of hospital admission or death with myasthenic disorder following a positive SARS-CoV-2 test (IRR, 61.32; 95% CI: 33.43–112.50 at day 0; IRR, 13.74; 95% CI: 8.07–23.41 at 1–7 days; IRR, 3.98; 95% CI: 1.86–8.52 at 8–14 days; IRR, 2.81; 95% CI: 1.16–6.79 at 22–28 days). In the 1–28 days post-exposure period we did not observe any association with ChAdOx1nCoV-19 (IRR, 1.23; 95% CI: 0.94–1.62) or BNT162b2 (IRR, 1.18; 95% CI: 0.88–1.59), but an increased risk after a SARS-CoV-2-positive test was identified (IRR, 3.01; 95% CI: 1.70–5.36).

**Hemorrhagic stroke.** There were 3,503 hospital admissions due to hemorrhagic stroke. Of these, 483 people (13.8%) had a positive SARS-CoV-2 test including 392 (11.2%) who had a positive test

prior to vaccination. There were 803 deaths (in 83 of which the SARS-CoV-2 test was positive). No association was found with the ChAdOx1nCoV-19 vaccine in any of the pre-specified time periods. There was an increased risk of hospital admission or death from hemorrhagic stroke at 1–7 days (IRR, 1.27; 95% CI: 1.02–1.59) and 15–21 days (IRR, 1.38; 95% CI: 1.12–1.71) after the first dose of BNT162b2. There was an increased risk of hemorrhagic stroke up to 7 days after a positive SARS-CoV-2 test (IRR, 12.42; 95% CI: 7.73–19.95 at day 0; IRR, 2.01; 95% CI: 1.29–3.15 at 1–7 days). In the 1–28 days post-vaccination period we did not observe an association with ChAdOx1nCoV-19 (IRR, 0.91; 95% CI: 0.88–0.94), but a positive association with the BNT162b2 vaccine was observed (IRR, 1.24; 95% CI: 1.07–1.43). No association was found with SARS-CoV-2 infection in the 1–28 day period after a positive test (IRR, 0.85; 95% CI: 0.57–1.26).

**Subarachnoid hemorrhage.** There were 2,055 hospital admissions due to subarachnoid hemorrhage. Of these, 262 people (12.7%) had a positive SARS-CoV-2 test including 220 (10.7%) who had a positive test prior to vaccination. There were 273 deaths (in 27 of which the SARS-CoV-2 test was positive). There was no association between the ChAdOx1nCoV-19 and BNT162b2 vaccines and subarachnoid hemorrhage. There was an increased risk of hospital admission or death for subarachnoid hemorrhage on the day of a SARS-CoV-2-positive test (IRR, 24.22; 95% CI: 14.50–40.45), and at 1–7 days (IRR, 4.17; 95% CI: 2.59–6.71) and 8–14 days (IRR, 2.15; 95% CI: 1.16–3.99) after the positive test. In the 1–28 days post-exposure period we did not observe any association with ChAdOx1nCoV-19 (IRR, 1.01; 95% CI: 0.86–1.18) or with BNT162b2 (IRR, 1.05; 95% CI: 0.84–1.30), but a potentially increased risk after the SARS-CoV-2 infection (IRR, 1.51; 95% CI: 0.96–2.36) was observed.

**Guillain-Barré syndrome and Bell's palsy: composite outcome.** Given that facial weakness can be part of the spectrum of Guillain-Barré



**Fig. 2 | Schematic presentation of the SCCS study design.** Each patient is followed from the index date to the study end date and is censored if death occurred or if they had a second dose of vaccine. Risk intervals (0, 1-7, 8-14, 15-21 and 22-28 days after exposure), the pre-risk interval (the 28 days prior to exposure) and the baseline periods (from study start to 29 days before exposure, and from 29 days after exposure to study end) are shown.

syndrome, we investigated the risk of hospital admission or death from co-occurrence of Bell's palsy and Guillain-Barré syndrome in the same individuals before and after ChAdOx1nCoV-19 and BNT162b2 vaccination in the study period. There were 34 patients admitted to hospital for both Bell's palsy and Guillain-Barré

syndrome. Of these patients, 27 were admitted on the same day for both outcomes, while seven were first admitted for Bell's palsy and subsequently for Guillain-Barré syndrome. We found an increased risk of co-occurrence of Bell's palsy and Guillain-Barré syndrome in the 15-21 days (IRR, 28.86; 95% CI: 5.45-152.74) and 22-28 days

**Table 3 | IRR and 95% CI for individual outcomes in pre-defined risk periods immediately before and after exposure to vaccination and before and after a positive SARS-CoV-2 test result, adjusted for calendar time from 1 December 2020 to 31 May 2021**

Time period	ChAdOx1nCoV-19 vaccine		BNT162b2 mRNA vaccine		Positive SARS-CoV-2 test	
	Events	IRR (95% CI)	Events	IRR (95% CI)	Events	IRR (95% CI)
<b>Acute CNS demyelinating events</b>						
Baseline	473	1.00	244	1.00	53	1.00
–28 to –1 days	117	0.83 (0.67–1.03)	58	0.92 (0.68–1.24)	27	2.94 (1.79–4.83)
Day 0	0	NA	*	0.43 (0.16–3.05)	7	19.34 (8.63–43.38)
1–7 days	38	1.03 (0.73–1.44)	15	0.91 (0.53–1.55)	9	3.45 (1.67–7.14)
8–14 days	35	0.95 (0.67–1.36)	16	0.94 (0.56–1.58)	7	2.61 (1.17–5.84)
15–21 days	38	1.04 (0.74–1.46)	16	0.92 (0.55–1.55)	6	2.05 (0.87–4.82)
22–28 days	33	0.93 (0.65–1.33)	21	1.19 (0.75–1.89)	*	0.60 (0.15–2.47)
1–28 days	144	0.97 (0.78–1.22)	68	1.02 (0.75–1.40)	*	1.67 (0.93–3.00)
<b>Encephalitis, meningitis and myelitis</b>						
Baseline	602	1.00	275	1.00	66	1.00
–28 to –1 days	78	0.42 (0.33–0.54)	45	0.59 (0.42–0.82)	78	5.64 (3.91–8.13)
Day 0	*	0.46 (0.15–1.43)	0	NA	23	38.57 (23.41–63.56)
1–7 days	52	1.15 (0.85–1.54)	22	1.02 (0.65–1.61)	24	5.71 (3.49–9.32)
8–14 days	58	1.32 (0.99–1.76)	27	1.17 (0.77–1.77)	24	5.63 (3.46–9.15)
15–21 days	37	0.89 (0.63–1.25)	21	0.95 (0.60–1.50)	6	1.38 (0.59–3.21)
22–28 days	38	0.96 (0.68–1.35)	27	1.28 (0.85–1.93)	6	1.33 (0.57–3.08)
1–28 days	185	1.07 (0.87–1.31)	97	1.14 (0.86–1.51)	60	2.70 (1.78–4.11)
<b>Guillain–Barré syndrome</b>						
Baseline	264	1.00	109	1.00	30	1.00
–28 to –1 days	41	0.44 (0.31–0.63)	21	0.67 (0.41–1.10)	23	4.85 (2.67–8.82)
Day 0	0	NA	0	NA	7	33.37 (14.21–78.36)
1–7 days	17	0.74 (0.44–1.23)	9	0.99 (0.49–2.00)	11	7.36 (3.57–15.18)
8–14 days	23	1.02 (0.65–1.59)	7	0.71 (0.32–1.56)	8	5.19 (2.31–11.65)
15–21 days	65	2.90 (2.15–3.92)	9	0.91 (0.45–1.84)	11	6.89 (3.37–14.09)
22–28 days	48	2.21 (1.59–3.09)	9	0.90 (0.45–1.82)	6	3.51 (1.44–8.57)
1–28 days	153	2.04 (1.60–2.60)	34	0.86 (0.54–1.36)	36	5.25 (3.00–9.18)
<b>Bell’s palsy</b>						
Baseline	1,356	1.00	712	1.00	134	1.00
–28 to –1 days	328	0.80 (0.70–0.91)	168	0.77 (0.65–0.92)	86	3.34 (2.49–4.48)
Day 0	5	0.33 (0.14–0.80)	*	0.36 (0.12–1.13)	35	33.23 (22.57–48.94)
1–7 days	95	0.89 (0.72–1.11)	54	0.91 (0.69–1.21)	44	5.84 (4.09–8.33)
8–14 days	84	0.79 (0.63–0.99)	57	0.95 (0.72–1.25)	17	2.17 (1.30–3.63)
15–21 days	136	1.29 (1.08–1.56)	65	1.05 (0.81–1.37)	9	1.09 (0.55–2.15)
22–28 days	115	1.13 (0.92–1.37)	71	1.17 (0.91–1.50)	7	0.80 (0.37–1.72)
1–28 days	430	1.07 (0.94–1.21)	247	1.06 (0.90–1.26)	77	1.34 (0.91–1.97)
<b>Myasthenic disorder</b>						
Baseline	311	1.00	213	1.00	32	1.00
–28 to –1 days	70	0.72 (0.54–0.96)	44	0.58 (0.41–0.83)	26	4.00 (2.30–6.96)
Day 0	0	NA	*	0.96 (0.30–3.04)	18	61.32 (33.43–112.50)
1–7 days	17	0.70 (0.42–1.16)	18	0.83 (0.50–1.37)	29	13.74 (8.07–23.41)
8–14 days	26	1.16 (0.76–1.77)	24	1.09 (0.70–1.71)	9	3.98 (1.86–8.52)
15–21 days	33	1.57 (1.07–2.30)	22	1.02 (0.64–1.63)	5	2.17 (0.84–5.63)
22–28 days	23	1.01 (0.65–1.57)	27	1.46 (0.96–2.22)	6	2.81 (1.16–6.79)
1–28 days	99	1.23 (0.94–1.62)	91	1.18 (0.88–1.59)	49	3.01 (1.70–5.36)
<b>Hemorrhagic stroke</b>						

Continued



**Table 3 | IRR and 95% CI for individual outcomes in pre-defined risk periods immediately before and after exposure to vaccination and before and after a positive SARS-CoV-2 test result, adjusted for calendar time from 1 December 2020 to 31 May 2021 (continued)**

Time period	ChAdOx1nCoV-19 vaccine		BNT162b2 mRNA vaccine		Positive SARS-CoV-2 test	
	Events	IRR (95% CI)	Events	IRR (95% CI)	Events	IRR (95% CI)
Baseline	1,456	1.00	811	1.00	173	1.00
–28 to –1 days	232	0.47 (0.41–0.55)	86	0.36 (0.29–0.46)	163	4.73 (3.72–6.02)
Day 0	7	0.37 (0.18–0.78)	6	0.59 (0.27–1.33)	20	12.42 (7.73–19.95)
1–7 days	131	0.98 (0.82–1.18)	93	1.27 (1.02–1.59)	23	2.01 (1.29–3.15)
8–14 days	141	1.06 (0.89–1.27)	89	1.18 (0.94–1.48)	14	1.19 (0.69–2.07)
15–21 days	128	0.98 (0.81–1.18)	106	1.38 (1.12–1.71)	10	0.84 (0.44–1.61)
22–28 days	126	1.00 (0.83–1.21)	91	1.15 (0.92–1.44)	6	0.51 (0.23–1.16)
1–28 days	526	1.02 (0.90–1.15)	379	1.24 (1.07–1.43)	53	0.85 (0.57–1.26)
Subarachnoid hemorrhage						
Baseline	971	1.00	415	1.00	88	1.00
–28 to –1 days	157	0.49 (0.41–0.58)	53	0.43 (0.32–0.58)	60	3.40 (2.38–4.86)
Day 0	*	0.34 (0.13–0.91)	0	NA	19	24.22 (14.50–40.45)
1–7 days	70	0.85 (0.66–1.10)	38	1.08 (0.77–1.52)	23	4.17 (2.59–6.71)
8–14 days	93	1.16 (0.93–1.44)	41	1.14 (0.82–1.59)	12	2.15 (1.16–3.99)
15–21 days	72	0.92 (0.72–1.18)	31	0.85 (0.58–1.23)	7	1.23 (0.57–2.67)
22–28 days	69	0.94 (0.73–1.20)	41	1.16 (0.84–1.61)	7	1.19 (0.55–2.58)
1–28 days	304	1.01 (0.86–1.18)	151	1.05 (0.84–1.30)	49	1.51 (0.96–2.36)

\*Cells with <5 are suppressed. NA, not applicable.

(IRR, 13.35; 95% CI: 2.48–72.92) after ChAdOx1nCoV-19 vaccination (Supplementary Table 2). In the 1–28 days post-vaccination period we found a positive association with the ChAdOx1nCoV-19 vaccine (IRR, 12.66; 95% CI: 2.70–59.21) but not with the BNT162b2 vaccine (Supplementary Table 2). The IRRs associated with SARS-CoV-2 infection were not estimated due to the small number of events in those with a positive SARS-CoV-2 test.

**National Scottish data.** In Scotland 1,982,678 people received the first dose of ChAdOx1nCoV-19 vaccine (~10% of those in England) and 1,077,626 people received the first dose of BNT162b2 vaccine (~10% of those in England) between 1 December 2020 and 31 May 2021. Of those vaccinated, 117,554 (~3%) had a SARS-CoV-2-positive test, either prior to or after vaccination. The age distribution of vaccinated patients and the percentage of vaccinated patients having any prior conditions were similar in the Scottish and English populations (Supplementary Table 3a).

The association between ChAdOx1nCoV-19 and Guillain-Barré syndrome for the 1–28 days post-vaccination period was replicated in Scotland (IRR, 2.31; 95% CI: 1.02–5.24), as shown in Supplementary Table 3b. The timing of this increased risk was consistent with the results seen in England: IRR, 2.15 (95% CI: 0.63–7.31) for 8–14 days, 4.79 (95% CI: 1.72–13.38) for 15–21 days and 3.60 (95% CI: 1.11–11.65) for 22–28 days (Supplementary Table 3c). No association between BNT162b2 and hemorrhagic stroke was seen in Scotland (IRR, 0.65; 95% CI: 0.35–1.20) in the 1–28 days period after vaccination (Supplementary Table 3b). The findings for SARS-CoV-2 test positivity were similar to the English data, with an increased risk of neurological outcomes following a positive test, although the estimates were generally imprecise due to the smaller population and lower rates of infection.

**Subgroup analyses by age group and sex.** We tested for interactions between vaccination and age group (>50 years and ≤50 years) and sex for the outcomes for which we observed an increased risk

after vaccination. Supplementary Table 4a lists the results of the interaction tests. When interaction terms were statistically significant, the IRR for subgroup analyses by age group or sex have been reported in Supplementary Table 4b. There was a significant interaction ( $P=0.016$ ) between age group and risk of myasthenic disorder associated with the ChAdOx1nCoV-19 vaccine (IRR, 2.44; 95% CI: 1.07–5.55 at 15–21 days) in people aged ≤50 years. The increased risk of hemorrhagic stroke associated with the BNT162b2 vaccine was significantly higher in female participants ( $P=0.007$ ): the IRR for hemorrhagic stroke in female participants was 1.44 (95% CI: 1.05–1.96) at 1–7 days and 1.84 (95% CI: 1.40–2.42) at 15–21 days after BNT162b2 vaccination compared with 1.13 (95% CI: 0.82–1.57) at 1–7 days and 0.98 (95% CI: 0.70–1.38) at 15–21 days in male participants.

**Excess events due to exposures.** We estimated the number of exposures needed for one excess event and the excess number of events per 10 million exposed for each outcome (Supplementary Table 5). For example, with ChAdOx1nCoV-19 there were 38 excess Guillain-Barré syndrome events per 10 million people vaccinated in the 1–28 days period after vaccination. For BNT162b2, there were 60 extra cases of hemorrhagic stroke per 10 million people vaccinated in the 1–28 days period after vaccination. For SARS-CoV-2 infection, in the 1–28 days period after a positive test there were an estimated 123 extra events of encephalitis meningitis and myelitis and 145 of Guillain-Barré syndrome per 10 million people with a positive test.

**Associations with negative and positive control outcomes.** We examined the associations of exposures with celiac disease as a negative control outcome and with anaphylaxis as a positive control outcome. We found no increased risk of celiac disease (negative control) across the pre-specified time periods for the vaccine exposures, but a decreased risk on the day of vaccination. Anaphylaxis (positive control) showed the expected increased risk in the

0–7 days after the first dose for both vaccines, but not in later periods (Supplementary Table 6).

**Sensitivity analyses.** We conducted a number of sensitivity analyses to ascertain the robustness of our results. Overall, the main findings were not sensitive to censoring due to death (with the exception of hemorrhagic stroke), removal of patients who had a second dose of the vaccine or adjustment for potential delays in recording. Results for these sensitivity analyses are shown in Supplementary Table 7a and Extended Data Figs. 1 and 2. We also extended the exposure risk period to 5 weeks, to test the suitability of our 28 day risk period and to avoid missing events due to lag in diagnosis. Results were similar to the main analysis (Supplementary Table 7b). An increased risk of Guillain–Barré syndrome was observed in the 29–35 days after ChAdOx1nCoV-19 vaccination (IRR, 1.55; 95% CI: 1.03–2.34).

We have further restricted the analyses to patients who had a positive SARS-CoV-2 test before vaccination. The results did not change from the main analysis for the SARS-CoV-2 test exposure (Supplementary Table 7c), suggesting that there is a higher risk of neurological complications after a positive SARS-CoV-2 test for all outcomes. The number of people infected after vaccination was too small to carry out any additional meaningful analyses. We also restricted the analyses to those who did not have a positive SARS-CoV-2 test. The results did not change from the main analysis for both vaccine exposures (Supplementary Table 7d).

## Discussion

This large population-based study of more than 32 million people investigated the neurological adverse events associated with the ChAdOx1nCoV-19 and BNT162b2 vaccines as well as SARS-CoV-2 infection. We identified several key findings that are timely and of high importance to the public, health policy makers and clinicians across the world. First, we found an increased risk of hospital admission for Guillain–Barré syndrome (15–21 days and 22–28 days), Bell's palsy (15–21 days) and myasthenic disorders (15–21 days) in those who received the ChAdOx1nCoV-19 vaccine. Second, an increased risk of hospital admission for hemorrhagic stroke (1–7 days and 15–21 days) was observed in those who received the BNT162b2 vaccine. Last, we identified a much greater increase in the risk of neurological outcomes following a positive SARS-CoV-2 test, such as acute CNS demyelinating events, encephalitis meningitis and myelitis, Guillain–Barré syndrome, Bell's palsy, myasthenic disorders, hemorrhagic stroke and subarachnoid hemorrhage. Apart from hemorrhagic stroke, the results were robust to sensitivity analyses that assessed the assumption that outcomes did not influence subsequent exposures, providing credence to our results.

In those who received the ChAdOx1nCoV-19 vaccine, we estimated 38 excess cases of Guillain–Barré syndrome per 10 million exposed in the 1–28 days risk period. However, we did not observe an increased risk of Guillain–Barré syndrome in those who received the BNT162b2 vaccine. We replicated these findings using an independent national cohort of more than 3 million people from Scotland, which provides strong support for the association between ChAdOx1nCoV-19 vaccine and Guillain–Barré syndrome. The study design and sensitivity analyses addressed some of the key issues related to this association, including confounding through fixed covariates, seasonality and variable exposures to predisposing infections during the pre- and post-vaccination periods. It remains unclear why the ChAdOx1nCoV-19 vaccine appears to contribute to the pathogenesis of Guillain–Barré syndrome while BNT162b2 vaccine does not. Further studies are needed to assess whether antibodies against adenovirus vector-based ChAdOx1nCoV-19 can cross-react with components of the peripheral nerves. Furthermore, we found that Guillain–Barré syndrome and Bell's palsy co-occur in those who received the ChAdOx1nCoV-19 vaccine. Clinically, this is likely to represent a variant of Guillain–Barré syndrome, in line

with the emerging case reports of Guillain–Barré syndrome variants with facial weakness after the ChAdOx1nCoV-19 vaccine<sup>16,17</sup>.

In those who received the BNT162b2 vaccine, we estimated 60 excess cases of hemorrhagic strokes per 10 million exposed in the 28 days after vaccination. We did not observe an increased risk of hemorrhagic stroke in those who received the ChAdOx1nCoV-19 vaccine. However, the magnitude of this association between BNT162b2 and hemorrhagic stroke was reduced in sensitivity analyses that accounted for fatal events. Intriguingly, the increased risk of hemorrhagic stroke associated with BNT162b2 was substantially higher in female participants than in male participants, suggesting that sex may further modify this risk. The mechanisms underlying this disparity in risk between the two vaccines is not clear but several reports have suggested an increased risk of immune thrombocytopenic purpura in individuals receiving mRNA vaccines<sup>18,19</sup>, which in turn could contribute to major bleeding events. It is worth highlighting that the association between the BNT162b2 vaccine and hemorrhagic stroke was not replicated using Scottish data in the context of a low number of events, and thus further validation of this finding is warranted.

In line with previous surveillance studies<sup>14,15</sup>, we identified that all investigated neurological conditions were linked to SARS-CoV-2 infection itself. Specifically, we noted an excess of inflammatory disorders including encephalitis meningitis and myelitis (123 excess cases per 10 million exposed), myasthenic disorders (163 excess cases per 10 million exposed) and Guillain–Barré syndrome (145 excess cases per 10 million exposed) in the 1–28 days period after a positive test. Our post-hoc analysis restricting to those who had a positive test prior to vaccination did not change the results. Unfortunately, the number of people with a SARS-CoV-2-positive test after vaccination was too small to evaluate the risk of neurological complications in this group. The highest IRRs for these neurological outcomes were typically seen on day 0 (the day of the positive test). We included day 0 on its own as a risk period because hospital admission can trigger SARS-CoV-2 testing; however, this could overestimate or underestimate the overall risks associated with infection. The number of people infected in Scotland (3%) was much smaller than in England (~6%), reflecting differences in infection rates and containment measures in the two countries.

Findings from this study have clear clinical and public health implications. Crucially, we found that the risk of neurological complications from infection was substantially higher than the risk of adverse events from vaccinations in our population (for example, 145 excess cases versus 38 excess cases of Guillain–Barré syndrome per 10 million exposed in those who had a positive SARS-CoV-2 test and ChAdOx1nCoV-19 vaccine, respectively). This will need ongoing analysis and monitoring as younger people are vaccinated. Clearly, neurological complications from vaccination and infection reported in this study are rare. However, these rare complications can cause lifelong disability requiring long-term care. Collectively, these results provide timely and valuable information that can help to inform clinical decision making, including facilitating earlier diagnosis, as well as resource allocation for health-care provision. This may be particularly relevant for intensive care unit resource planning, given the potential need for prolonged admission to intensive care units for a proportion of patients with Guillain–Barré syndrome<sup>20</sup>.

This study had several strengths. First, the United Kingdom was an ideal place to carry out this study given that both the ChAdOx1nCoV-19 and BNT162b2 vaccines have been rolled out at speed and scale. Second, this was a population-based study of prospectively recorded medical data and it avoided the recall and selection biases linked to case reports. Third, the large sample size provided sufficient power to investigate these rare neurological outcomes that could not be assessed through clinical trials. Fourth, the SCCS study design (Fig. 2) removes potential confounding from fixed characteristics, and the breakdown of the study period into

weekly blocks accounted for temporal confounding. Last, the key finding that the ChAdOx1nCoV-19 vaccine was associated with an increased risk of subsequent Guillain–Barré syndrome was independently replicated using Scottish national data.

There were several limitations to this study. We examined the risks associated only with the first vaccine dose because the data on outcomes following second doses were limited at the time of this study. Furthermore, it was not possible to distinguish between Guillain–Barré syndrome variants including Miller Fisher syndrome in view of the coding used in the Hospital Episode Statistics database. Also, given that we investigated only hospital admissions and mortality, a proportion of patients with milder neurological disease may not have been included and the overall burden of neurological adverse events from vaccination and infection could be underestimated. Some hospital admissions for myasthenic disorders could represent exacerbations of previously well-controlled myasthenic illness given that we excluded only those with a prior hospital contact for these neurological conditions in the preceding 2 years. The Scottish replication cohort was smaller than the study cohort, which meant that estimates were less precise and we did not have sufficient statistical power to replicate findings with smaller effect sizes.

In summary, this population-based study identifies and quantifies several rare neurological adverse events that are specific to the ChAdOx1nCoV-19 and BNT162b2 vaccines, as well as SARS-CoV-2 infection. We believe that these findings are likely to be of relevance to other countries using these vaccines and it would be useful to replicate these results in similarly large datasets internationally. Clinicians should be aware of these rare complications, and the findings from this study will be paramount to policy makers in risk–benefit evaluations and health-care resource allocation. Importantly, the risks of adverse neurological events following SARS-CoV-2 infection are much greater than those associated with vaccinations, highlighting the benefits of ongoing vaccination programs.

### Online content

Any methods, additional references, Nature Research reporting summaries, source data, extended data, supplementary information, acknowledgements, peer review information; details of author contributions and competing interests; and statements of data and code availability are available at <https://doi.org/10.1038/s41591-021-01556-7>.

Received: 7 July 2021; Accepted: 24 September 2021;  
Published online: 25 October 2021

### References

- Lopez Bernal, J. et al. Effectiveness of the Pfizer-BioNTech and Oxford-AstraZeneca vaccines on covid-19 related symptoms, hospital admissions, and mortality in older adults in England: test negative case-control study. *BMJ* **373**, n1088 (2021).
- Vasileiou, E. et al. Interim findings from first-dose mass COVID-19 vaccination roll-out and COVID-19 hospital admissions in Scotland: a national prospective cohort study. *Lancet* **397**, 1646–1657 (2021).
- Chagla, Z. In adults, the Oxford/AstraZeneca vaccine had 70% efficacy against COVID-19 >14 d after the 2nd dose. *Ann. Intern. Med.* **174**, JC29 (2021).
- Polack, F. P. et al. Safety and efficacy of the BNT162b2 mRNA Covid-19 vaccine. *N. Engl. J. Med.* **383**, 2603–2615 (2020).
- Dagan, N. et al. BNT162b2 mRNA Covid-19 vaccine in a nationwide mass vaccination setting. *N. Engl. J. Med.* **384**, 1412–1423 (2021).
- Menni, C. et al. Vaccine side-effects and SARS-CoV-2 infection after vaccination in users of the COVID Symptom Study app in the UK: a prospective observational study. *Lancet Infect. Dis.* **21**, 939–949 (2021).
- Pottegard, A. et al. Arterial events, venous thromboembolism, thrombocytopenia, and bleeding after vaccination with Oxford-AstraZeneca ChAdOx1-S in Denmark and Norway: population based cohort study. *BMJ* **373**, n1114 (2021).
- Hippisley-Cox, J. et al. Risk of thrombocytopenia and thromboembolism after covid-19 vaccination and SARS-CoV-2 positive testing: self-controlled case series study. *BMJ* **374**, n1931 (2021).
- Patel, S. U., Khurram, R., Lakhani, A. & Quirk, B. Guillain–Barre syndrome following the first dose of the chimpanzee adenovirus-vectored COVID-19 vaccine, ChAdOx1. *BMJ Case Rep.* **14**, e242956 (2021).
- Singh Malhotra, H. et al. COVID-19 vaccination-associated myelitis. *QJM* <https://doi.org/10.1093/qjmed/hcab069> (2021).
- Colella, G., Orlandi, M. & Cirillo, N. Bell's palsy following COVID-19 vaccination. *J. Neurol.* **268**, 3589–3591 (2021).
- Varatharaj, A. et al. Neurological and neuropsychiatric complications of COVID-19 in 153 patients: a UK-wide surveillance study. *Lancet Psychiatry* **7**, 875–882 (2020).
- Pateron, R. W. et al. The emerging spectrum of COVID-19 neurology: clinical, radiological and laboratory findings. *Brain* **143**, 3104–3120 (2020).
- Farrington, C. P., Nash, J. & Miller, E. Case series analysis of adverse reactions to vaccines: a comparative evaluation. *Am. J. Epidemiol.* **143**, 1165–1173 (1996).
- Petersen, I., Douglas, I. & Whitaker, H. Self controlled case series methods: an alternative to standard epidemiological study designs. *BMJ* **354**, i4515 (2016).
- Maramattom, B. V. et al. Guillain-Barre syndrome following ChAdOx1-S/nCoV-19 vaccine. *Ann. Neurol.* **90**, 312–314 (2021).
- Allen, C. M. et al. Guillain-Barre syndrome variant occurring after SARS-CoV-2 vaccination. *Ann. Neurol.* **90**, 315–318 (2021).
- Lee, E. J. et al. Thrombocytopenia following Pfizer and Moderna SARS-CoV-2 vaccination. *Am. J. Hematol.* **96**, 534–537 (2021).
- Tarawneh, O. & Tarawneh, H. Immune thrombocytopenia in a 22-year-old post Covid-19 vaccine. *Am. J. Hematol.* **96**, E133–E134 (2021).
- Walgaard, C. et al. Prediction of respiratory insufficiency in Guillain-Barre syndrome. *Ann. Neurol.* **67**, 781–787 (2010).

**Publisher's note** Springer Nature remains neutral with regard to jurisdictional claims in published maps and institutional affiliations.



**Open Access** This article is licensed under a Creative Commons Attribution 4.0 International License, which permits use, sharing, adaptation, distribution and reproduction in any medium or format, as long as you give appropriate credit to the original author(s) and the source, provide a link to the Creative Commons license, and indicate if changes were made. The images or other third party material in this article are included in the article's Creative Commons license, unless indicated otherwise in a credit line to the material. If material is not included in the article's Creative Commons license and your intended use is not permitted by statutory regulation or exceeds the permitted use, you will need to obtain permission directly from the copyright holder. To view a copy of this license, visit <http://creativecommons.org/licenses/by/4.0/>.

© The Author(s) 2021

## Methods

**Ethics approval.** National Health Service Research Ethics Committee (NHS REC) approval was obtained from East Midlands-Derby Research Ethics Committee [reference 04/03/2021].

**Data.** We used the NIMS Database of COVID-19 vaccination to identify vaccine exposure. This includes vaccine type, date and doses for all people vaccinated in England. National SARS-CoV-2 infection data were obtained from Public Health England (PHE).

This study used International Classification of Diseases 10 (ICD-10) codes to define neurological outcomes of interest (Supplementary Table 8). The diagnoses were extracted from Hospital Episode Statistics (HES), which is a database containing details of all admissions to National Health System (NHS) hospitals in England

We linked NIMS, at the individual level, to national data for mortality (Office for National Statistics, ONS), hospital admissions (HES) and SARS-CoV-2 infection data (PHE). This information is now summarized in Extended Data Fig. 3.

**Study design.** The SCCS design was originally developed to examine vaccine safety<sup>14,15</sup>. The method includes only individuals who have had the outcome of interest (cases) and compares the incidence rate (in each case) of the outcome of interest during a time-limited exposed period (for example, immediately after vaccination) with rates during unexposed periods (that is, baseline). A relative incidence greater than 1 indicates an increased risk after vaccination or a positive SARS-CoV-2 test. Given that the analyses are conditional on each case, any fixed characteristics during the study period, such as sex, ethnicity or chronic conditions, are inherently controlled for. Any time-varying factors, such as seasonal variation, need to be adjusted for in the analyses.

A flowchart showing how each dataset used for the SCCS analysis of each outcome was created is presented in Extended Data Fig. 3.

**Study period and population.** We examined the associations between ChAdOx1nCoV-19 or BNT162b2 vaccines and neurological complications during the ongoing COVID-19 vaccination program in England (commenced on 8 December 2020). We also investigated the association between a SARS-CoV-2-positive test and the neurological diseases of interest in these vaccinated individuals. Separate analyses were carried out for each neurological outcome of interest. People were considered eligible for inclusion in each study cohort if they had received at least one vaccine dose, were at least 16 years old, and were admitted to hospital or died from the outcome of interest between 1 December 2020 and 31 May 2021 (last data update). Patients were followed up from the start (1 December 2020) to the earliest of either the end of the study period (31 May 2021), the date of second dose or when they died. Only the first outcome event during the study period was included. Patients with a hospital admission for the same outcome in the 2 years prior to the start of the study period were excluded. We excluded patients who received the mRNA-1273 (Moderna) vaccine given that the number of these patients was too small for meaningful analysis.

**Outcomes.** The neurological outcomes in this study were selected a priori based on a literature search for any reports of emerging neurological complications from SARS-CoV-2 infection and vaccination. These included acute CNS demyelinating events, encephalitis meningitis and myelitis (excluding encephalopathy), Guillain-Barré syndrome (encapsulating all Guillain-Barré syndrome variants including Miller Fisher syndrome), Bell's palsy, myasthenic disorders, hemorrhagic stroke and subarachnoid hemorrhage. Other outcomes, such as peripheral neuropathies, were excluded because these conditions were unlikely to result in hospital admission (particularly within the 28 day risk period in this study). We used the ICD-10 codes to define each outcome, as listed in Supplementary Table 8. The outcomes were identified as the first hospital admission due to the event of interest or as a cause of death recorded on the death certificate with the event.

**Exposures.** The exposure variables were a first dose of the ChAdOx1nCoV-19 or BNT162b2 vaccines and first infection with SARS-CoV-2, defined as a positive COVID-19 polymerase chain reaction (PCR) test during the study period (either before or after vaccination). For all outcomes we defined the exposure risk intervals as the following pre-specified time periods: 0, 1–7, 8–14, 15–21 and 22–28 days after each exposure date, under the assumption that the adverse events under consideration are unlikely to be related to exposure beyond 28 days after the exposure. We assumed that patients who experienced an outcome before vaccination would probably delay vaccination until symptoms had improved. Therefore we included a pre-risk period in the analyses, defined as the 1–28 days immediately before the vaccination or SARS-CoV-2 test. The baseline period was then defined as extending from 1 December 2020 to 29 days before the exposure date, and from 29 days after the exposure date to 31 May 2021 or the censored date, if earlier. Hospital admissions for the events of interest can trigger COVID-19 testing. Such events may well be caused by SARS-CoV-2 infection, but the reverse causality involved in their detection induces bias. To reduce the bias, which could overestimate or underestimate the effect of infection, we allocated day 0 to a risk period on its own.

**Seasonality and COVID-19 pandemic period.** Some outcomes of interest have seasonal variation: for example, Guillain-Barré syndrome is more common in the winter months<sup>21</sup>. Moreover, hospital admissions were probably influenced by the pressure on the health systems due to COVID-19, which was not uniform during the pandemic period. To allow for these underlying seasonal effects, we split the observational study period into weeks and adjusted for week as a factor variable in the statistical models. In doing so, we estimated the relative incidence in exposure periods up to 28 days after vaccination compared with the unexposed periods, adjusted for underlying seasonality, which accounted for changes in hospital admission rates caused by the pandemic. If an exposure period is long in relation to the observation period, it might be impossible to distinguish between seasonal variation and vaccine effects. However, given that the exposure period was relatively short (28 days), this was unlikely to happen given that after 28 days a vaccinated patient returns to the baseline period, ensuring that in each interval both exposed and unexposed cases appear (Extended Data Fig. 4).

**Statistical analysis.** We described the characteristics of each cohort (vaccinated patients with the outcomes of interest) in terms of age and sex. The SCCS models were fitted using a conditional Poisson regression model with an offset for the length of the risk period. IRRs, the rates of hospital admission or death due to each outcome of interest in risk periods relative to baseline periods, and their 95% CI were estimated using the SCCS model adjusted for week number as time-varying covariates. Exposure terms for both vaccines and for infection with SARS-CoV-2 were included in the same model.

We conducted sensitivity analyses to assess the robustness of results to assumptions such as that the occurrence of an outcome event did not influence the probability of subsequent exposures, by (1) excluding those who died from the outcome and (2) restricting analysis to the post-vaccination period, without censoring at death due to the outcome; to assess potential reporting delays in the data by (3) restricting the study period until 1 May 2021; and to test the choice of the follow-up period by (4) restricting analysis to patients who received only one vaccine dose and (5) censoring at 12 weeks after vaccination or at the date of a second dose if earlier. To test our assumption that events after 28 days are not related to the vaccines, we did an additional analysis with a 35 day risk period after exposure.

To further validate the estimated IRR associated with a positive SARS-CoV-2 test, we also restricted the analyses to only patients who had a positive SARS-CoV-2 test before vaccination.

Stata version 17 was used for these analyses.

**Absolute measures of effect.** Absolute risk differences cannot be obtained using the SCCS methodology. We supplemented our estimates of IRRs with measures of the effect of each exposure in absolute terms, using a method<sup>22</sup> developed to estimate the number of exposures needed to produce one excess adverse outcome and the excess number of events per 10 million exposed for each outcome.

**Interactions with age and sex.** We investigated whether the association between vaccine exposures and outcomes is sex or age dependent by including, in the analysis, interaction terms between these covariates and the exposures. We used the likelihood ratio test to assess the interaction terms. We present results in separate subgroups when an interaction was significant.

**Negative and positive control.** We examined the association of exposures with celiac disease as a negative control outcome<sup>23</sup>, which is assumed not to be associated with exposure to vaccination or SARS-CoV-2 infection; and with anaphylaxis as a positive control outcome given that it could occur shortly after vaccination with either vaccine<sup>24</sup>.

**Assessing the SCCS assumptions.** To further assess the assumptions of the SCCS and our modeling choices, we visually examined the data. We plotted a histogram of the number of occurrences of an event by time prior to or since vaccination for each outcome to assess the possibility that a hospital admission for that event might affect subsequent vaccination (Extended Data Fig. 5). We plotted a histogram of the time from the event to the actual end of observation in censored and uncensored cases to assess whether event-dependent observation periods may be a problem for the analysis (Extended Data Fig. 6).

**Event-dependent exposures.** Extended Data Fig. 5 shows the number of occurrences of an event by time before or since vaccination. We notice that there is a decrease in the 28 days immediately before vaccination, indicating that occurrence of an event might have reduced the likelihood of vaccination. This pattern is similar for most of the outcomes and for both vaccines. Therefore, we have added the pre-risk period of 28 days.

**Event-dependent observation periods.** Extended Data Fig. 6 shows the frequency of days from the event to the actual end of observation in censored and uncensored cases. A spike close to zero is apparent in the censored data histogram for hemorrhagic stroke and subarachnoid hemorrhage. This indicates the presence of event-dependent observation periods (censoring on death date due to outcome),

which we tested further with sensitivity analyses 1 and 2. These additional analyses were in agreement with the main analysis, suggesting that there should be little concern for these outcomes.

**Replication using national Scottish data.** To assess the robustness of the findings, we carried out an independent replication of the risks of neurological outcomes in vaccine recipients using a similar SCCS design. NHS Scotland provides comprehensive health care that is free at the point of care for all residents, with a base population that includes 5.4 million residents (~95% of the population) registered with a general medical practice in Scotland. We used deterministic linkage (based on the Community Health Index) to link vaccination information (extracted from general medical practice records and the Turas Vaccination Management Tool) and hospitalization records (from the Scottish Morbidity Records 01), mortality data (from National Records of Scotland) and SARS-CoV-2 infection data (from Electronic Communication of Surveillance in Scotland).

We classified exposures and outcomes in a similar way to the main analysis. An individual was defined as exposed to either the ChAdOx1nCoV-19 or BNT162b2 vaccine on the date that they received their first dose between 8 December 2020 and 31 May 2021. We defined outcomes of interest using the same ICD-10 codes as for the main analysis. We excluded patients who experienced the outcome in the 2 years prior to the study start date and excluded patients under 16 years of age. We fitted conditional Poisson regression models with an offset for the length of the risk period and adjusted for the weekly time period as a time-varying covariate. The control (baseline) period was the period from 1 December 2020 to 29 days before vaccination, allowing for a 28 day clearance (that is, pre-risk) period, and from 29 days after the exposure date to 31 May 2021 or the censored date, if earlier. We also stratified the post-vaccination follow-up period using the same time periods as the analysis in England when the number of events allowed. We also repeated the analysis by replacing vaccination with SARS-CoV-2 infection, which was defined as a positive PCR test within the study period. Given the smaller population size of Scotland, we focused on assessing the consistency of the point estimates of associations observed in the main analyses.

**Reporting Summary.** Further information on research design is available in the Nature Research Reporting Summary linked to this article.

## Data availability

The data that support the findings of this study, that is, the National Immunisation (NIMS) Database of COVID-19, mortality (Office for National Statistics, ONS), hospital admissions (Hospital Episode Statistics, HES) and SARS-CoV-2 infection data (Public Health England, PHE) are not publicly available because they are based on de-identified national clinical records. Due to national and organizational data privacy regulations, individual-level data such as those used for this study cannot be shared openly. Approval to access PHE data needs to be provided by the PHE Office for Data Release. Approval to access NIMS, HES and ONS data requires permission from NHS Digital, who retain the copyright in that data.

## Code availability

The code used for this study has been deposited in the Git repository of the research group, which is protected by privacy. Access to the code is available from the authors on request. Stata version 17 was used for these analyses.

## References

- Webb, A. J., Brain, S. A., Wood, R., Rinaldi, S. & Turner, M. R. Seasonal variation in Guillain-Barre syndrome: a systematic review, meta-analysis and Oxfordshire cohort study. *J. Neurol. Neurosurg. Psychiatry* **86**, 1196–1201 (2015).
- Wilson, K. & Hawken, S. Drug safety studies and measures of effect using the self-controlled case series design. *Pharmacoepidemiol. Drug Saf.* **22**, 108–110 (2013).
- Lipsitch, M., Tchetgen Tchetgen, E. & Cohen, T. Negative controls: a tool for detecting confounding and bias in observational studies. *Epidemiology* **21**, 383–388 (2010).
- Kounis, N. G. et al. Allergic reactions to current available COVID-19 vaccinations: pathophysiology, causality, and therapeutic considerations. *Vaccines (Basel)* **9**, 221 (2021).

## Acknowledgements

This project involves data derived from patient-level information collected by the National Health Service (NHS), as part of the care and support of cancer patients. The SARS-CoV-2 test data are collated, maintained and quality assured by Public Health England (PHE) and NHS Digital. Access to data was facilitated by the PHE

Office for Data Release. The Hospital Episode Statistics (HES), Secondary Users Service (SUS-PLUS) datasets and civil registration data are used by permission from NHS Digital, who retain the copyright in that data. The authors acknowledge the contribution of EMIS GP practices, who contribute to QResearch, and EMIS Health and the Universities of Nottingham and Oxford for expertise in establishing, developing or supporting the QResearch database. QResearch has been supported by funding from the National Institute for Health Research (NIHR) Biomedical Research Centre, Oxford, grants from John Fell Oxford University Press Research Fund, grants from Cancer Research UK (CR-UK) (grant number C5255/A18085) through the Cancer Research UK Oxford Centre, grants from the Oxford Wellcome Institutional Strategic Support Fund (204826/Z/16/Z) and other research councils, during the conduct of the study. NHS Digital and PHE bear no responsibility for the analysis or interpretation of the data. This research is part of the Data and Connectivity National Core Study, led by Health Data Research UK in partnership with the Office For National Statistics and funded by UK Research and Innovation (grant ref. MC\_PC\_20029). K.K. is supported by the National Institute for Health Research (NIHR) Applied Research Collaboration East Midlands (ARC-EM) and NIHR Lifestyle BRC. S.V.K. is supported by an NRS Senior Clinical Fellowship (SCAF/15/02), the UK Medical Research Council (MC\_UU\_00022/2) and the Scottish Government Chief Scientist Office (SPHSU17). L.H. is supported by an NIHR-funded clinical lectureship (CL-2019-13-001). The views expressed in this publication are those of the authors and not necessarily those of the NHS, the UK National Institute for Health Research or the Department of Health. This study is supported by a Patient and Public Involvement and Engagement panel who have advised in developing this research and the authors thank them for their support.

## Author contributions

M.P., L.H., C.A.C.C. and J.H.-C. jointly led the study conceptualization, development of the research questions and study design. M.P. performed the analyses. M.P. and L.H. wrote the first draft of the paper. J.H.-C. led the funding application, obtained data approvals, undertook the data specification and data linkage and provided critical feedback on the manuscript drafts. J.P., C.R. and S.V.K. conducted the replication analyses. C.A.C.C., J.D., L.H., D.S., S.R., S.D., D.H., R.R., F.Z., X.W.M. and D.A.H. contributed to the discussion on protocol development and provided critical feedback on drafts of the paper. All authors approved the protocol, contributed to the critical revision of the paper, and approved the final version of the paper.

## Competing interests

A.S. is a member of the Scottish Government Chief Medical Officer's COVID-19 Advisory Group, the Scottish Government's Standing Committee on Pandemics, and AstraZeneca's Thrombotic Thrombocytopenic Advisory Group. All roles are unremunerated. D.H. is a member of the Commission on Human Medicine's Neurology, Pain and Psychiatry Expert Advisory Group. K.K. is a member of the Government Scientific Advisory Group for Emergencies. C.R. is a member of the Scottish Government Chief Medical Officer's COVID-19 Advisory Group, SPI-M, and the MHRA Vaccine Benefit and Risk Committee. J.H.-C. reports grants from the National Institute for Health Research (NIHR) Biomedical Research Centre, Oxford, grants from John Fell Oxford University Press Research Fund, grants from Cancer Research UK (CR-UK) (grant number C5255/A18085), through the Cancer Research UK Oxford Centre, grants from the Oxford Wellcome Institutional Strategic Support Fund (204826/Z/16/Z) and other research councils, during the conduct of the study. J.H.-C. is an unpaid director of QResearch, a not-for-profit organization that is a partnership between the University of Oxford and EMIS Health, who supply the QResearch database used for this work. J.H.-C. is a founder and shareholder of ClinRisk Ltd and was its medical director until 31 May 2019. ClinRisk Ltd produces open and closed source software to implement clinical risk algorithms (outside this work) into clinical computer systems. J.H.-C. is chair of the NERVTAG risk stratification subgroup and a member of SAGE COVID-19 groups and the NHS group advising on prioritization of use of monoclonal antibodies in COVID-19 infection. All other authors have no competing interests.

## Additional information

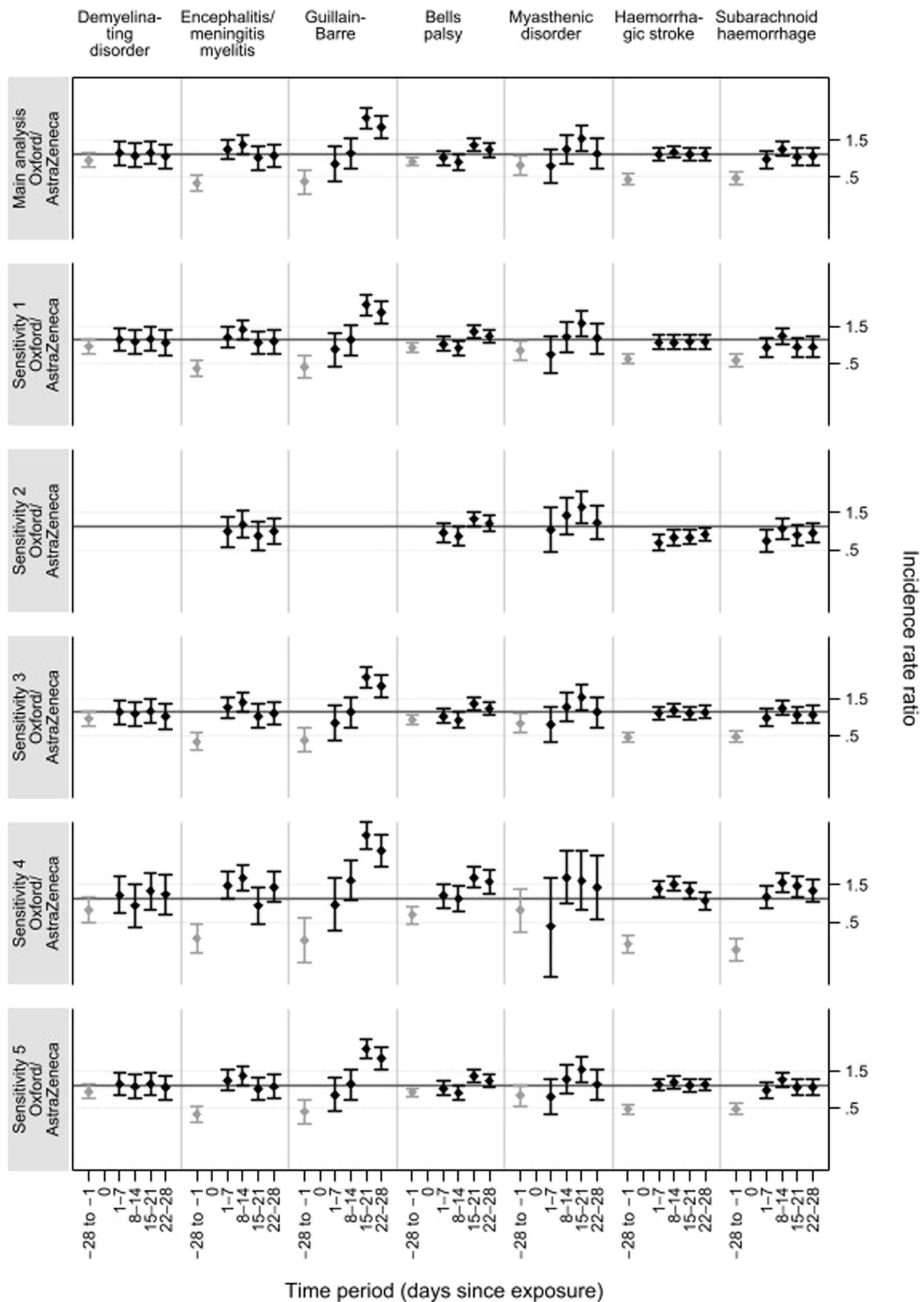
**Extended data** are available for this paper at <https://doi.org/10.1038/s41591-021-01556-7>.

**Supplementary information** The online version contains supplementary material available at <https://doi.org/10.1038/s41591-021-01556-7>.

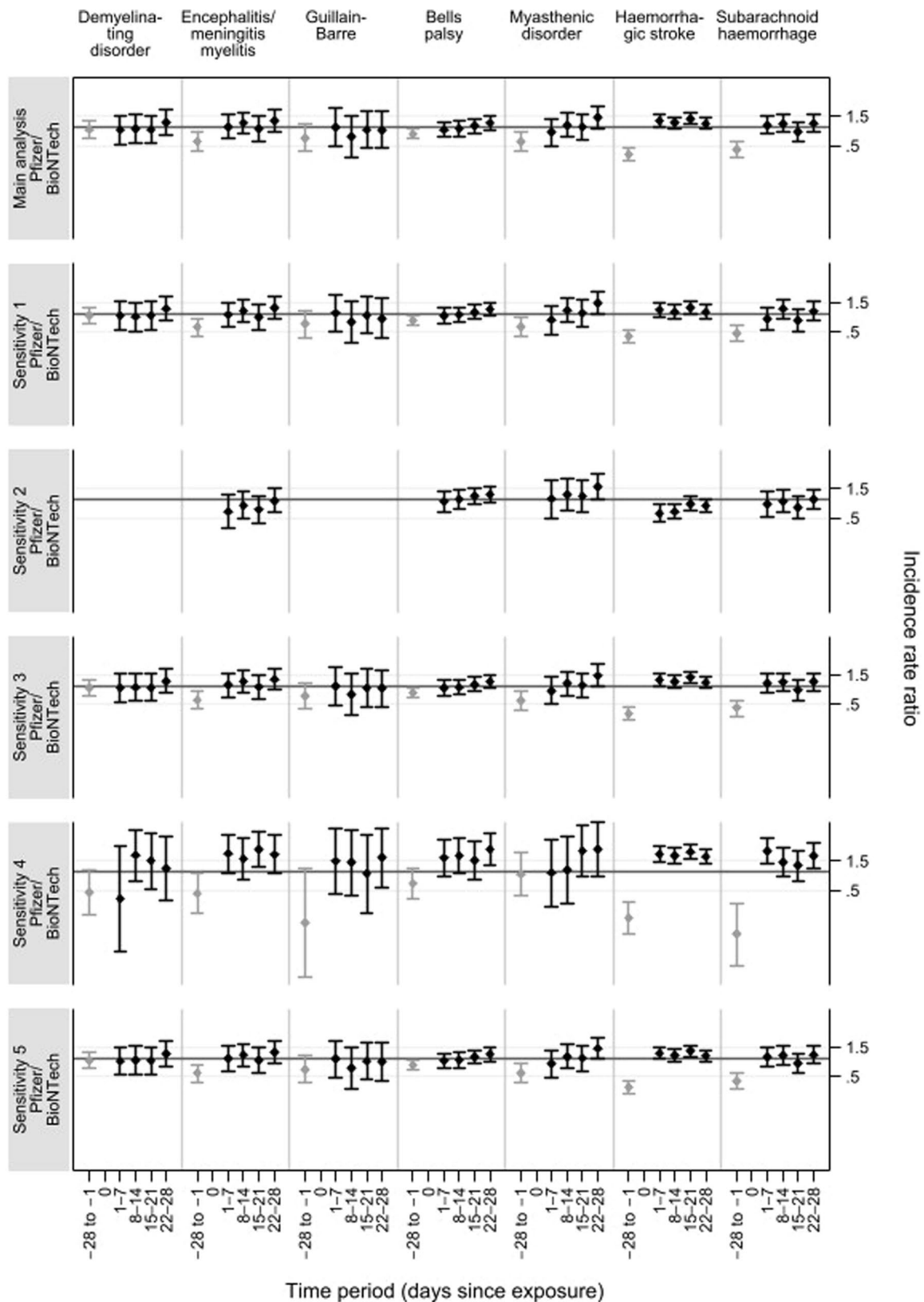
**Correspondence and requests for materials** should be addressed to Julia Hippisley-Cox.

**Peer review information** *Nature Medicine* thanks Avindra Nath and the other, anonymous, reviewer(s) for their contribution to the peer review of this work. Jerome Staal was the primary editor on this article and managed its editorial process and peer review in collaboration with the rest of the editorial team.

**Reprints and permissions information** is available at [www.nature.com/reprints](http://www.nature.com/reprints).

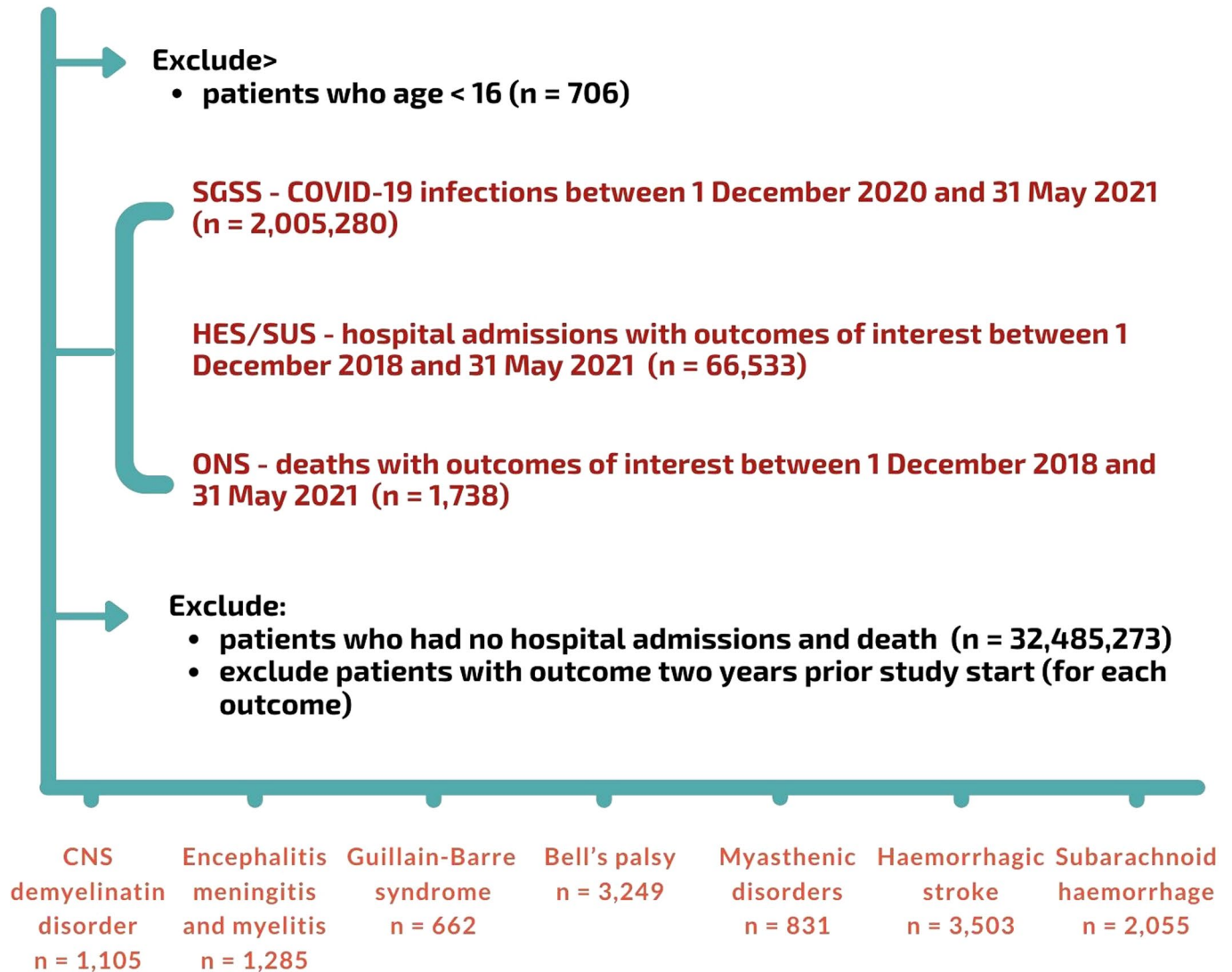


**Extended Data Fig. 1 | Incidence rate ratios (IRR 95% CI) for single outcomes in pre-defined risk periods immediately before and after exposure to ChAdOx1nCoV-19 vaccine.** Incidence rate ratios (IRR 95% CI) for single outcomes in pre-defined risk periods immediately before and after exposure to ChAdOx1nCoV-19 vaccine, adjusted for calendar time from 1 December 2020 to 31 May 2021 computed using a population of size  $n = 32,553,534$  vaccinated individuals. Comparisons between different sensitivity analyses (cells with  $< 5$  are suppressed). Horizontal bold line indicates 1.



**Extended Data Fig. 2 | Incidence rate ratios (IRR 95% CI) for single outcomes in pre-defined risk periods immediately before and after exposure to BNT162b2 mRNA vaccine.** Incidence rate ratios (IRR 95% CI) for single outcomes in pre-defined risk periods immediately before and after exposure to BNT162b2 mRNA vaccine, adjusted for calendar time from 1 December 2020 to 31 May 2021 computed using a population of size  $n = 32,553,534$  vaccinated individuals. Comparisons between different sensitivity analyses (cells with  $< 5$  are suppressed). Horizontal bold line indicates 1.

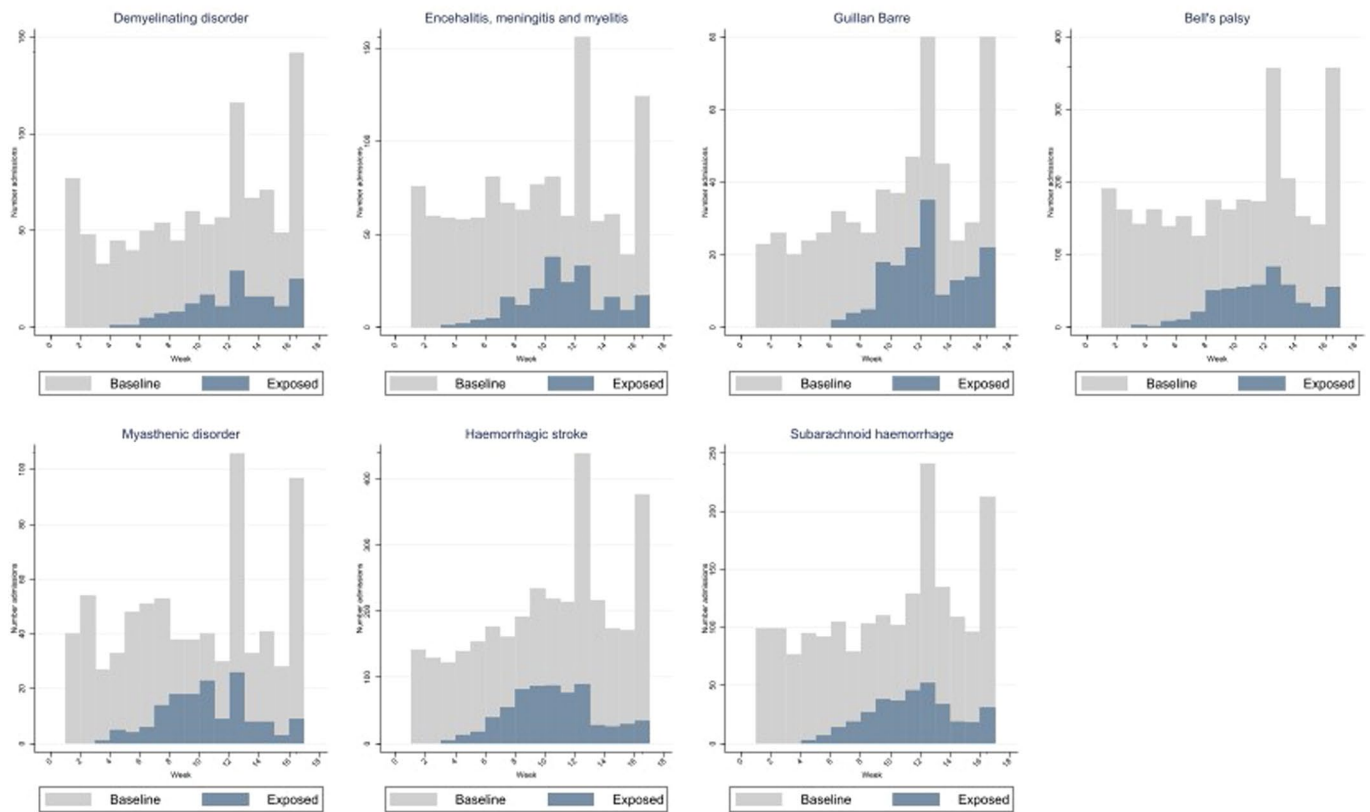
**NIMS\* - COVID/19 vaccinations between 1 December 2020 and 31 May 2021  
(n = 32,553,240)**



**Extended Data Fig. 3 | Data flow chart.** Flowchart of data used in this study showing how data from National Immunisation Management System (NIMS), Second Generation Surveillance System (SGSS), Hospital Episode Statistics (HES) and Office of National Statistic (ONS) were used to obtain information about vaccinations, SARS-CoV-2 test results, and hospital admissions for neurological outcomes and deaths, respectively.

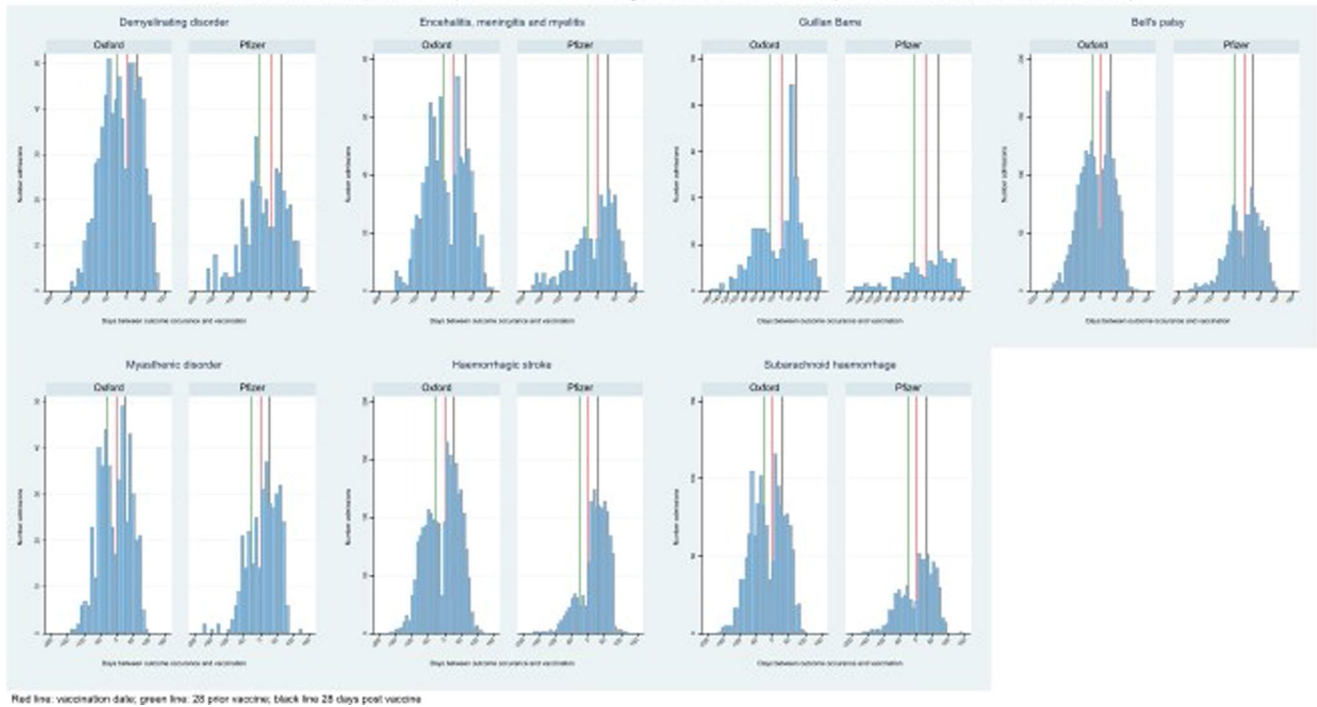


Number of events in the baseline and in the exposed set by weeks (from 01/12/2020 to 31/05/2021)  
in England based on HES and SUS plus



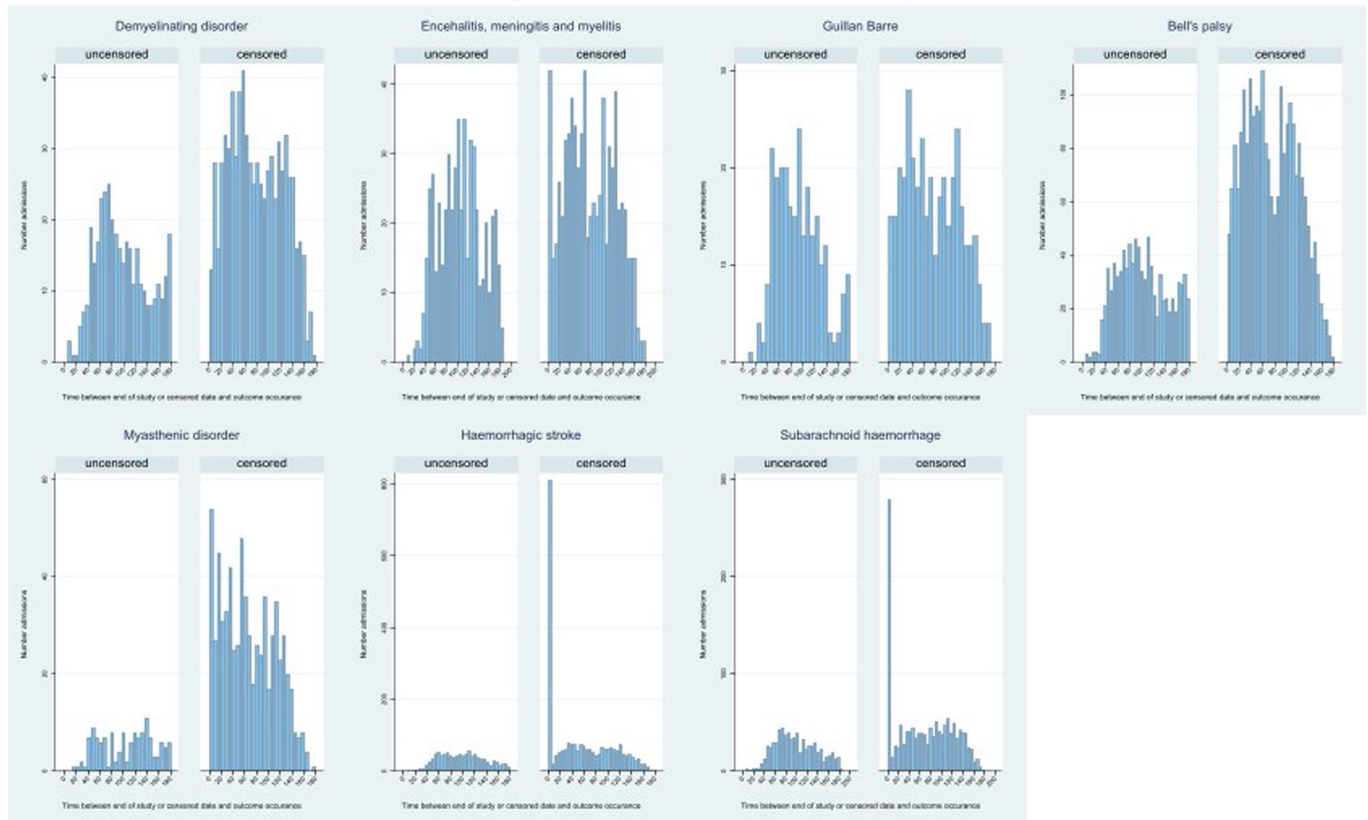
**Extended Data Fig. 4 |** Number of hospital admissions or deaths for each outcome in the baseline and in the exposed set by week. Number of hospital admissions or deaths for each outcome in the baseline and in the exposed set by week from 1 December 2020 to 31 May 2021 ( $n = 32,553,534$ ).

Number of events prior and post vaccine in England based on HES (from 01/12/2020 to 31/05/2021)



**Extended Data Fig. 5 | Number of hospital admissions or deaths for each outcome prior and post each vaccine.** Number of hospital admissions or deaths for each outcome prior and post each vaccine from 1 December 2020 to 31 May 2021 ( $n = 32,553,534$ ). Red line: vaccine date; green line: 28 days prior vaccine; black line: 28 days post vaccine.

Time between end of study or censored date and outcome occurrence (from 01/12/2020 to 31/05/2021)  
in England based on HES and SUS plus



**Extended Data Fig. 6 | Time between end of study or censored date and date of hospital admission or deaths for each outcome.** Time between end of study or censored date and date of hospital admission or deaths for each outcome from 1 December 2020 to 31 May 2021 ( $n=32,553,534$ ).

## Reporting Summary

Nature Portfolio wishes to improve the reproducibility of the work that we publish. This form provides structure for consistency and transparency in reporting. For further information on Nature Portfolio policies, see our [Editorial Policies](#) and the [Editorial Policy Checklist](#).

### Statistics

For all statistical analyses, confirm that the following items are present in the figure legend, table legend, main text, or Methods section.

n/a Confirmed

- The exact sample size ( $n$ ) for each experimental group/condition, given as a discrete number and unit of measurement
- A statement on whether measurements were taken from distinct samples or whether the same sample was measured repeatedly
- The statistical test(s) used AND whether they are one- or two-sided  
*Only common tests should be described solely by name; describe more complex techniques in the Methods section.*
- A description of all covariates tested
- A description of any assumptions or corrections, such as tests of normality and adjustment for multiple comparisons
- A full description of the statistical parameters including central tendency (e.g. means) or other basic estimates (e.g. regression coefficient) AND variation (e.g. standard deviation) or associated estimates of uncertainty (e.g. confidence intervals)
- For null hypothesis testing, the test statistic (e.g.  $F$ ,  $t$ ,  $r$ ) with confidence intervals, effect sizes, degrees of freedom and  $P$  value noted  
*Give  $P$  values as exact values whenever suitable.*
- For Bayesian analysis, information on the choice of priors and Markov chain Monte Carlo settings
- For hierarchical and complex designs, identification of the appropriate level for tests and full reporting of outcomes
- Estimates of effect sizes (e.g. Cohen's  $d$ , Pearson's  $r$ ), indicating how they were calculated

*Our web collection on [statistics for biologists](#) contains articles on many of the points above.*

### Software and code

Policy information about [availability of computer code](#)

Data collection

Data analysis

For manuscripts utilizing custom algorithms or software that are central to the research but not yet described in published literature, software must be made available to editors and reviewers. We strongly encourage code deposition in a community repository (e.g. GitHub). See the Nature Portfolio [guidelines for submitting code & software](#) for further information.

### Data

Policy information about [availability of data](#)

All manuscripts must include a [data availability statement](#). This statement should provide the following information, where applicable:

- Accession codes, unique identifiers, or web links for publicly available datasets
- A description of any restrictions on data availability
- For clinical datasets or third party data, please ensure that the statement adheres to our [policy](#)

The data that support the findings of this study [National Immunisation (NIMS) Database of COVID-19, mortality (ONS), hospital admissions (HES) and SARS-CoV-2 infection data (PHE)] are not publicly available because they are based on de-identified national clinical records. To guarantee the confidentiality of personal and health information, only the authors had access to the data in accordance with relevant ethical and license agreements.

## Field-specific reporting

Please select the one below that is the best fit for your research. If you are not sure, read the appropriate sections before making your selection.

Life sciences  Behavioural & social sciences  Ecological, evolutionary & environmental sciences

For a reference copy of the document with all sections, see [nature.com/documents/nr-reporting-summary-flat.pdf](https://www.nature.com/documents/nr-reporting-summary-flat.pdf)

## Life sciences study design

All studies must disclose on these points even when the disclosure is negative.

Sample size	32,552,534 people. We included all people vaccinated in England in the study period.
Data exclusions	We excluded people under age 16 (since vaccination was not recommended for this age group) or those who received Moderna vaccine (numbers too small)
Replication	We replicated our main findings using a Scottish population of 5.4 million people and obtained similar results.
Randomization	N/A. We conducted an observational study.
Blinding	N/A. We conducted an observational study.

## Reporting for specific materials, systems and methods

We require information from authors about some types of materials, experimental systems and methods used in many studies. Here, indicate whether each material, system or method listed is relevant to your study. If you are not sure if a list item applies to your research, read the appropriate section before selecting a response.

### Materials & experimental systems

n/a	Included in the study
<input checked="" type="checkbox"/>	<input type="checkbox"/> Antibodies
<input checked="" type="checkbox"/>	<input type="checkbox"/> Eukaryotic cell lines
<input checked="" type="checkbox"/>	<input type="checkbox"/> Palaeontology and archaeology
<input checked="" type="checkbox"/>	<input type="checkbox"/> Animals and other organisms
<input type="checkbox"/>	<input checked="" type="checkbox"/> Human research participants
<input checked="" type="checkbox"/>	<input type="checkbox"/> Clinical data
<input checked="" type="checkbox"/>	<input type="checkbox"/> Dual use research of concern

### Methods

n/a	Included in the study
<input checked="" type="checkbox"/>	<input type="checkbox"/> ChIP-seq
<input checked="" type="checkbox"/>	<input type="checkbox"/> Flow cytometry
<input checked="" type="checkbox"/>	<input type="checkbox"/> MRI-based neuroimaging

## Human research participants

Policy information about [studies involving human research participants](#)

Population characteristics	Patients aged 16+ vaccinated with ChAdOx1nCoV-19 and BNT162b2 and having admitted to hospital with outcome of interest in the study period (1-12-2020 to 31-05-2021) in England. There were 16,759,298 women and 14,219,053 men in the population.
Recruitment	We used data collected from National Immunisation Management System (NIMS) and Hospital Episode Statistics (HES) in England
Ethics oversight	National Health Service Research Ethics Committee (NHS REC) approval was obtained from East Midlands-Derby Research Ethics Committee [reference 04/03/2021].

Note that full information on the approval of the study protocol must also be provided in the manuscript.