



THE UNIVERSITY *of* EDINBURGH

Edinburgh Research Explorer

The fall and rise of group B Streptococcus in dairy cattle: reintroduction due to human-to-cattle host jumps?

Citation for published version:

Crestani, C, Forde, TL, Lycett, SJ, Holmes, MA, Fasth, C, Persson-Waller, K & Zadoks, RN 2021, 'The fall and rise of group B Streptococcus in dairy cattle: reintroduction due to human-to-cattle host jumps?', *Microbial Genomics*, vol. 7, no. 000648, 000648. <https://doi.org/10.1099/mgen.0.000648>

Digital Object Identifier (DOI):

[10.1099/mgen.0.000648](https://doi.org/10.1099/mgen.0.000648)

Link:

[Link to publication record in Edinburgh Research Explorer](#)

Document Version:

Publisher's PDF, also known as Version of record

Published In:

Microbial Genomics

General rights

Copyright for the publications made accessible via the Edinburgh Research Explorer is retained by the author(s) and / or other copyright owners and it is a condition of accessing these publications that users recognise and abide by the legal requirements associated with these rights.

Take down policy

The University of Edinburgh has made every reasonable effort to ensure that Edinburgh Research Explorer content complies with UK legislation. If you believe that the public display of this file breaches copyright please contact openaccess@ed.ac.uk providing details, and we will remove access to the work immediately and investigate your claim.



The fall and rise of group B *Streptococcus* in dairy cattle: reintroduction due to human-to-cattle host jumps?

Chiara Crestani^{1,*}, Taya L. Forde¹, Samantha J. Lycett², Mark A. Holmes³, Charlotta Fasth⁴, Karin Persson-Waller⁴ and Ruth N. Zadoks^{1,5,6}

Abstract

Group B *Streptococcus* (GBS; *Streptococcus agalactiae*) is a major neonatal and opportunistic bacterial pathogen of humans and an important cause of mastitis in dairy cattle with significant impacts on food security. Following the introduction of mastitis control programmes in the 1950s, GBS was nearly eradicated from the dairy industry in northern Europe, followed by re-emergence in the 21st century. Here, we sought to explain this re-emergence based on short and long read sequencing of historical (1953–1978; $n=44$) and contemporary (1997–2012; $n=76$) bovine GBS isolates. Our data show that a globally distributed bovine-associated lineage of GBS was commonly detected among historical isolates but never among contemporary isolates. By contrast, tetracycline resistance, which is present in all major GBS clones adapted to humans, was commonly and uniquely detected in contemporary bovine isolates. These observations provide evidence for strain replacement and suggest a human origin of newly emerged strains. Three novel GBS plasmids were identified, including two showing >98% sequence similarity with plasmids from *Streptococcus pyogenes* and *Streptococcus dysgalactiae* subsp. *equisimilis*, which co-exist with GBS in the human oropharynx. Our findings support introduction of GBS into the dairy population due to human-to-cattle jumps on multiple occasions and demonstrate that reverse zoonotic transmission can erase successes of animal disease control campaigns.

DATA SUMMARY

The authors confirm all supporting data, code and protocols have been provided within the article or through supplementary data files. The scripts used for raw read assembly and genome quality control can be found in the supplementary file, available in the online version of this article. Supplementary Material can be found at <https://doi.org/10.6084/m9.figshare.14748864.v1>

(2) Reference sequence Tn916 from *S. agalactiae* 2603V/R, ICESag2603VR-1.

(3) Reference sequence Tn5801 from *S. agalactiae* COH1, AAJR01000021.1.

(4) Plasmid pA996, KC895877.1.

(5) Plasmid pW2580, AY907345.1.

Other external data used:

(1) 2603V/R, GenBank accession NC_004116.

INTRODUCTION

Group B *Streptococcus* (GBS), or *Streptococcus agalactiae*, is the leading cause of human neonatal meningitis in high income countries [1] and causes invasive and non-invasive disease in

Received 06 April 2021; Accepted 08 July 2021; Published 06 September 2021

Author affiliations: ¹Institute of Biodiversity, Animal Health and Comparative Medicine, University of Glasgow, Garscube Campus, Glasgow G61 1QH, UK; ²The Roslin Institute, University of Edinburgh, Easter Bush Campus, Midlothian EH25 9RG, UK; ³Department of Veterinary Medicine, University of Cambridge, Madingley Rd, Cambridge CB3 0ES, UK; ⁴National Veterinary Institute (SVA), SE-751 89 Uppsala, Sweden; ⁵Moredun Research Institute, Pentlands Science Park, Bush Loan, Penicuik EH26 0PZ, UK; ⁶School of Veterinary Science, University of Sydney, Werombi Road, Camden, NSW 2570, Australia.

*Correspondence: Chiara Crestani, c.crestani.1@research.gla.ac.uk

Keywords: *Streptococcus agalactiae*; emergence; anthroponosis; reverse zoonosis; plasmid; host adaptation.

Abbreviations: CC, clonal complex; CDC, centers for disease control and prevention; GAS, Group A *Streptococcus*; GBS, Group B *Streptococcus*; GGS, Group G *Streptococcus*; ICE, integrative conjugative element; ID, identity; IME, integrative mobilizable elements; MGE, mobile genetic elements; QC, query coverage; ST, sequence type; SVA, National Veterinary Institute Sweden; TcR, tetracycline resistance; WGS, whole genome sequencing.

Reads for all isolates sequenced in this study have been submitted to the ENA Sequence Read Archive (SRA). SRA accession numbers are included in Table S1.

Data statement: All supporting data, code and protocols have been provided within the article or through supplementary data files. Two supplementary tables and five supplementary figures are available with the online version of this article.

000648 © 2021 The Authors



This is an open-access article distributed under the terms of the Creative Commons Attribution NonCommercial License.

adults with or without underlying medical conditions [2, 3]. GBS is also a commensal of the lower gastrointestinal and urogenital tract of men and women, with an estimated carriage prevalence of 20–30% [4, 5]. Additional colonisation sites include the skin and oropharynx [5–7]. Many animal species can be infected with GBS, and major economic impacts are recognised in the global dairy and aquaculture industries. Emergence of GBS in animal production systems occurred concurrently with changes in husbandry practices, such as use of milking machines, or the intensification of commercial aquaculture [3, 8, 9]. In the 1950s and 1960s, mastitis control programmes were implemented to limit the impact of GBS on milk production. Such programmes focused on identification and antimicrobial treatment of infected cattle and prevention of GBS transmission during milking, and led to near-elimination of bovine GBS in Canada [10], the UK [11] and northern Europe [12–14], with elimination ('reduction to zero of the incidence of disease or infection in a defined geographical area' [15]) achieved by most farms in those areas. The success of GBS mastitis control programmes, which predate genetic typing of bacterial isolates by several decades, was attributed to the perception that GBS is an 'obligate intramammary pathogen of dairy cattle' [8], despite its prevalence in humans. In the UK [16], the USA [9], and Portugal [17], a single bovine-adapted lineage of GBS, clonal complex (CC) 61, predominates in cattle. This observation, combined with the absence of CC61 among human GBS collections, has fuelled the perception that this GBS lineage is bovine-specific [9, 16, 17]. In recent years, re-emergence of GBS in dairy herds has been documented in several Nordic countries [2, 8, 18]. This phenomenon is partly attributed to changes in dairy production systems, including herd size, ownership structure and management practices [8, 18]. It is not clear, however, why approaches that were adequate for control of GBS in other decades or countries would fail in northern Europe, unless pathogen evolution has changed the paradigm on which these programmes were built, necessitating the use of additional or alternative approaches. Such insight is fundamental to the development of new animal disease control strategies, especially those that do not rely on routine use of antimicrobials. We hypothesised that the bovine-adapted GBS lineage CC61 was eliminated through dedicated mastitis control programmes, with subsequent emergence of GBS from other lineages, possibly as a result of host-species jumping, as described for *Staphylococcus aureus* mastitis in cattle [19] and suggested for GBS in fishes [3]. To test this, we investigated GBS isolates collected from bovine milk in Sweden over six decades, focusing on shifts in population composition, and the detection of genetic markers of host adaptation that might provide insight into a potential reverse zoonotic origin of newly emerged GBS lineages in cattle.

METHODS

Bacterial isolates

Historical (1953–1978; $n=45$) and contemporary (1997–2012; $n=77$) bovine GBS isolates were obtained from the National Veterinary Institute (SVA; Table S1, available in the online version of this article). Isolates originated from bovine milk samples from 107 farms and had been

Impact Statement

Pathogens can jump between humans and animals. Animal domestication and intensification of livestock production systems have caused multiple human to animal spill-over events, sometimes with significant impact on animal health and food production. The most common production-limiting disease of dairy cattle is mastitis, inflammation of the mammary gland, which can be caused by group B *Streptococcus*, a common commensal and pathogen of humans. Using genomic data from historical and recent isolates, we show that re-emergence of this pathogen in the dairy industry in northern Europe is due to strains with genomic signatures of human host-adaptation, including antimicrobial resistance genes and plasmids. This shows how elimination of animal diseases may be hampered by humans serving as a reservoir of multi-host pathogens, and reverse zoonotic transmission.

submitted to SVA for diagnostic testing. In the contemporary period, the standard approach to archiving was to store the first isolate(s) from every farm newly diagnosed with GBS. The same procedure was likely followed historically, although detailed records are lacking. In Europe, GBS isolates from a dairy farm generally belong to a single strain or sequence type (ST) [18, 20]. Therefore, one isolate per farm per year was selected for sequencing, with one exception, where two STs were detected on the same farm in the same year (Table S1). No isolates were available from 1979 through 1996 (inclusive).

Short read sequencing

DNA was extracted with the GenElute Bacterial Genomic DNA Kit (Sigma-Aldrich) as per the manufacturer's instructions. Library preparation was carried out with the Nextera XT DNA Sample Preparation Kit and MiSeq Reagent Kit V2 Library Preparation Kit (Illumina Inc.). DNA was sequenced with Illumina MiSeq technology. Paired-end raw reads were trimmed and filtered with ConDeTri v2.3 to remove low-quality bases and PCR duplicates [21] and *de novo* assembly was performed with SPAdes v3.11.1 [22] (the complete assembly pipeline can be found in the supplementary material). Quality control of the assemblies generated from Illumina data ($n=122$) was carried out with QUAST v5.0.2 [23]. Results for the total length of the genome, total number of contigs, N50 and GC content were plotted with the Python Seaborn library [24] (Fig. S1) and low-quality genomes were identified with a custom-built bash pipeline (see supplementary material). Dataset mean values for genome length, total number of contigs and N50 were 2126345 bp, 58 and 492052 bp, respectively. Two genome assemblies were excluded from subsequent analyses: the first had a high GC content compared to the dataset average (isolate GC=36.92%, dataset mean and twice the standard

deviation=35.43% ±0.32). The sequence was checked with KmerFinder v3.1 [25] and was identified as belonging to a different bacterial species, *Enterococcus thailandicus*. The second genome had low quality scores for total number of contigs ($n=1837$), N50 (1992 bp) and genome length (2751323 bp), which are indicative of possible contamination. Therefore, only 120 high-quality genome assemblies were selected for subsequent analyses; none of these genomes showed signs of contamination when run through KmerFinder. The distribution of contig numbers for the 120 high quality assemblies was bimodal (Fig. S2), with most of the more fragmented genomes belonging to bovine-adapted lineage CC61 (mean contig number=112, compared to mean contig number=35 for other genomes; Fig. S2b). Genome fragmentation was attributed to presence of a relatively high number of mobile genetic elements (MGE) and insertion sequences (IS) in this lineage [9, 26].

Long read sequencing

To obtain closed circular genomes, Oxford Nanopore MinION sequencing [27] was applied to a subset of isolates ($n=22$, Table S1). Within each lineage, isolates were selected to maximise the diversity in terms of ST, antimicrobial resistance determinants and presence/absence of integrative conjugative elements (ICE) based on analysis of the short read sequence data. Two libraries, each consisting of 11 samples and a negative control, were prepared with the Rapid Barcoding Kit (SQK-RBK004 - Oxford Nanopore Technologies) and sequenced for 2 to 5 h, generating an average of 1.73 Gb per run, with an estimated mean sequence coverage of 83.9× (this number and other statistics for long reads were obtained with Nanostat v1.4.0 and can be found in Table S2). Base calling and demultiplexing were carried out with guppy v3.3.0 [28], Filtlong v0.2.0 (<https://github.com/rrwick/Filtlong>) was used to filter out the lowest quality reads until only 500 Mbp remained, and Unicycler v0.4.8 [29] was used to generate high-quality hybrid assemblies of raw Nanopore and Illumina data (with default settings). Unicycler was able to resolve 20 complete genomes out of 22 isolates sequenced using Oxford Nanopore MinION. Nineteen of these were generated with a hybrid Illumina-Nanopore reads assembly, and one (MRI Z2-182) using long read-only assembly, as the hybrid assembly process for this genome generated a fragmented sequence of eight contigs. Quality control of the assembled genomes was carried out with QUAST (Table S2) and contamination was checked with KmerFinder (none detected). We were not able to resolve closed genomes for isolates MRI Z2-332 and MRI Z2-340 with either type of assembly.

Core genome analysis

A core genome alignment was obtained with Parsnp v1.2 [30]. RAXML-NG v0.9.0 [31] was used to infer a maximum-likelihood tree under a GTR+G model, which was inspected and annotated using iTOL [32]. Nucleotide sequences were annotated with Prokka v1.13.7 [33], and Roary v3.12.0 [34] was used

to generate a pangenome (with default settings). To investigate unresolved relationships between isolates that could be caused by recombination in the core genes, SplitsTree v4.15.1 [35] was used (Fig. S3). MLST profiles were identified with SRST2 v0.2.0 [36] and new types ($n=18$, ST1384 to ST1387, ST1392 to ST1394 and ST1507 to ST1517) were submitted for ST assignment at pubMLST (<https://pubmlst.org>). Capsular serotyping was conducted *in silico* following the method described by the Centers for Disease Control and Prevention (CDC) [37]. Briefly, BLASTn was used to search genome assemblies for the presence of serotype-specific short sequences extracted from the capsular serotype operon of selected reference genomes. With this approach, a perfect identity match is required for serotype VII and IX, whereas a minimum identity (ID) of 96% is suggested for serotypes Ia, Ib, and II through VI. We first validated this method on a database of publicly available GBS genomes [38], comprising human and animal-derived GBS sequences. Whole genome sequence (WGS) serotyping results matched perfectly with those from phenotypic methods. A lower ID threshold was observed for most serotype Ia strains in our study compared to the CDC study [37], as the majority of serotype Ia nucleotide sequences had a 94% ID match. Although most genomes had only one best match, two best matches were observed in a few cases. For these, the sequences were re-analysed using an *in silico* serotyping method that is based on the alignment of longer serotype-specific capsular operon sequences [39].

Analysis of accessory genome content

Antimicrobial resistance genes were detected with ResFinder v3.2 [40]. Presence of the lactose operon (Lac.2) [26, 41, 42], which is a marker of bovine host adaptation, was assessed with BLASTn (query coverage QC >90%, and ID >95%), searching for genotypes Lac.2a, Lac.2b and Lac.2c [41]. Detection of ICE Tn916 and Tn5801, which carry the tetracycline resistance genes typical of human-associated GBS lineages [38] was also conducted with BLASTn searches (QC >80% and ID >95%), using reference sequence *S. agalactiae* 2603 V/R, ICESag2603VR-1 (length=18031 bp) and *S. agalactiae* COH1, AAJR01000021.1 (selected region from 14055 to 34289; length=20235 bp), respectively. Lac.2 variants and ICE sequences were extracted from the genomes for phylogenetic analysis with ARIBA v2.14.4 [43], with custom-built databases. For the ICE, two genomes that were *tet(M)*-positive did not lead to an extracted sequence from ARIBA; therefore, an area of 20000 bp surrounding *tet(M)* was manually selected and BLASTn was used to determine the ICE family with ICEfinder [44]. The ICE was identified as a Tn5801-like element, which diverged from the Tn5801 reference for two genes (Fig. S4). Manual extraction of amino acid sequences was carried out from annotation files for the Lac.2 integrases genes, when possible, and for the *tet(M)* gene. Alignments of the nucleotide sequences of the ICE and the Lac.2 variants, and of the amino acid sequences of the *tet(M)* and the Lac.2 integrase genes, were carried out with MAFFT v7.407 [45] and Neighbour-Joining trees were built within Geneious software [46] with a Jukes Cantor model (default settings) (Figs S4 and S5). Figures were edited using Inkscape (www.inkscape.org).

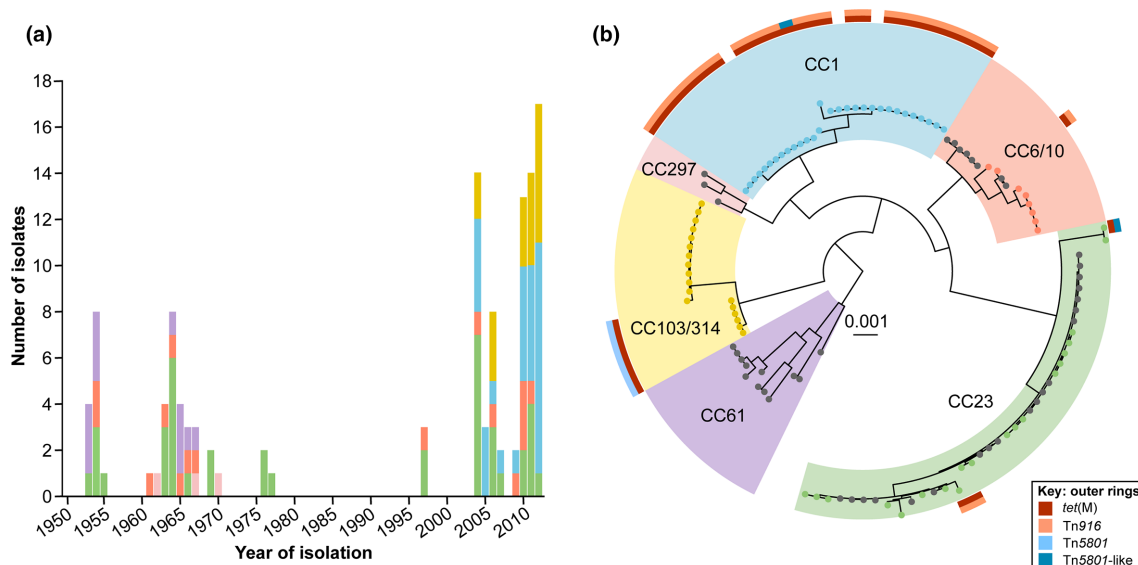


Fig. 1. Control and re-emergence of group B *Streptococcus* (GBS) is associated with strain replacement. (a) Frequency distribution of 120 GBS isolates from bovine milk, collected from 1953 to 1977 ($n=44$) and 1997 to 2012 ($n=76$), shows presence of six clonal complexes (CC; colour as indicated in panel b). Bovine-specific GBS lineage CC61 (purple) was last detected prior to 1970. Re-emergence of GBS in the Swedish dairy cattle population after a period of near-elimination is associated with CC1 (blue) and CC103/314 (yellow), which were first detected in 2004. Lineages CC23 (green) and CC6/10 (orange), which are also commonly found in other host species, were detected among historical and contemporary isolates. (b) Tetracycline resistance, a marker of adaptation of GBS to humans, was detected exclusively among contemporary bovine GBS isolates. The core genome phylogeny of historical and contemporary isolates (black and coloured leaves, respectively) is shown, with CC and presence of *tet(M)* and integrative conjugative elements (ICE), namely Tn916, Tn5801 and Tn5801-like. *tet(M)* was carried by Tn5801 in all ST314 isolates, and mostly by Tn916 among CC1 isolates. One ST28 isolate from 1978 did not belong to any of the major clades and is not shown. Tree was rooted at midpoint.

RESULTS AND DISCUSSION

Eradication and re-emergence of GBS is associated with strain replacement

To test the hypothesis that the near-elimination and re-emergence of GBS in the Swedish dairy cattle population was associated with strain replacement, we inferred ST from the genomes of 120 GBS isolates from bovine milk, including 44 historical isolates collected from 1953 to 1978 and 76 contemporary isolates collected from 1997 to 2012. GBS detection in milk was exceedingly rare in the intervening period, and no stored isolates were available for typing. Bovine-adapted lineage CC61 was exclusively detected among historical isolates collected before 1970, as was minor lineage CC297. By contrast, two other lineages (CC1 and CC103/314) were only detected among contemporary isolates (Fig. 1). CC61, also referred to as CC61/67 or CC67, was first recognised in the UK [16] and is also widespread in cattle in the USA [9] and Portugal [17]. With the exception of three recent cases in China [47], CC61/67 has never been reported in people. Its absence from humans may be due to pseudogenisation of the operon that encodes the polysaccharide capsule, an important virulence factor in human but not bovine GBS infections [17]. Without alternative host species, elimination of CC61 from the cattle population would mean that no reservoir is left, precluding re-emergence and explaining its absence among contemporary isolates. Not much is known about the origin or fate of CC297, which is a rare type in humans

as well as animals. Contemporary lineage CC1, by contrast, is common among human carriage and disease isolates, including in Sweden [2, 48]. It has recently been recognised as a common cause of bovine mastitis in northern Europe [2, 18, 20] and elsewhere [6]. Contemporary lineage CC103/314 is recognised as a human pathogen in Asia, including Thailand [49], Taiwan [50], and China [51]. In cattle, it is found across multiple continents, with reports of CC103/314 as a common lineage among bovine isolates from China [52], Colombia [6], Denmark [20], Finland [2] and Sweden (Fig. 1). Re-emergence of pathogens may be due to cessation of control activities once near-elimination is achieved, with or without re-introduction of pathogens [15]. In northern Europe, changes in control activities and animal husbandry may have contributed to GBS re-emergence. Examples include lifting of a ban on movement of cattle from GBS positive herds to other herds; changes in housing systems, notably a shift from tie stall barns where cows are tethered in place to free stall barns where cows can walk around and are exposed to a greater number of other animals and their manure; changes in herd size and management, e.g. amalgamation of multiple small herds into larger herds with the original owners managing the new herd on a rotational basis, leading to inconsistencies in mastitis control practices; and changes in milking equipment, such as a shift from milking parlours to automated milking systems, where a single machine milks a larger number of cows [2, 8, 18]. The lineage-replacement we describe here

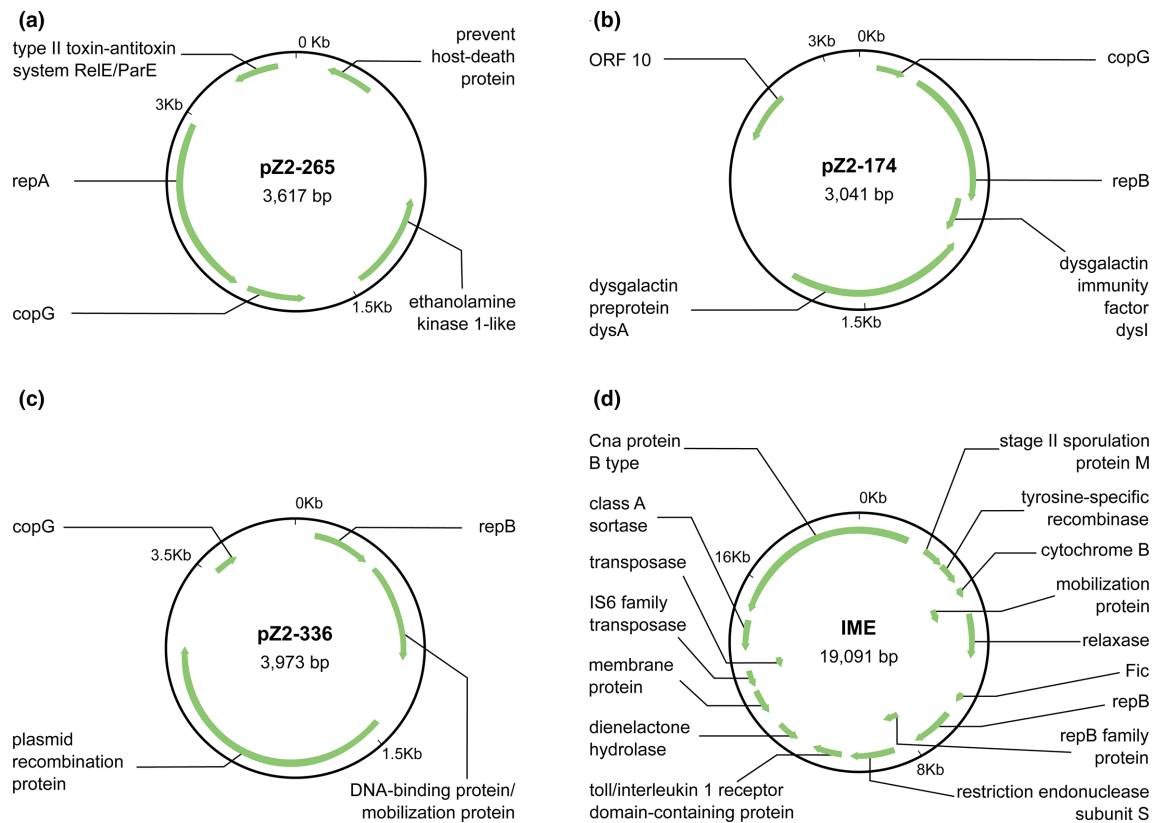


Fig. 2. Hybrid Illumina-MinION assemblies of bovine group B *Streptococcus* (GBS) revealed the presence of plasmids and integrative mobilizable elements (IME). (a) Plasmid pZ2-265 has 99.28% sequence similarity to plasmid pA996 (KC895877.1) from *Streptococcus pyogenes* or group A *Streptococcus*, GAS. (b) Plasmid pZ2-174 shows 98.85% sequence similarity to pW2580 (AY907345.1) from *Streptococcus dysgalactiae* subsp. *equisimilis* or group G *Streptococcus*, GGS. (c) pZ2-336 did not show significant similarity with known plasmids, whilst a second circular element in the same genome assembly (d) could either belong to a novel unclassified mobile genetic element family or be an IME.

shows that re-introduction of GBS must also have occurred. Lineage replacement may contribute to changes in transmission patterns, as suggested for ST103, which was the predominant strain in faecal and environmental samples in a study in Norway [18]. It has been postulated that ST103 may have an oro-faecal transmission cycle with subsequent exposure of the mammary gland to the contaminated environment, as opposed to contagious transmission from cow to cow via the milking machine or milking process, which has been the basis for design of GBS control programmes [18].

Host-adaptation markers suggest human-to-bovine host jumps

The majority of CC1 (27 of 30, 90%) and many CC103/314 (7 of 18, 39%) isolates carried the tetracycline resistance (TcR) gene *tet(M)*, which was not detected in any historical isolates. TcR genes were carried by ICE Tn916 or Tn5801 or a Tn5801-like element (29, 6 and 2 of 37 *tet(M)* positive genomes, respectively; Fig. S4). All bovine CC1 isolates belonged to serotype V, and TcR was predominantly associated with Tn916 within this clade. TcR in CC103/314 was exclusively associated with Tn5801 (Fig. 1). TcR is rare among bovine isolates but very

common among human isolates [9]. Indeed, the human GBS population is dominated by a few GBS lineages that expanded after acquisition of TcR [38]. We interpret the presence of TcR in newly emerged bovine GBS lineages as an indication that those lineages have a human origin. In human GBS, CC1 serotype V acquired Tn916 with TcR around 1935 [38]. Tn5801 carrying TcR was acquired by human GBS around 1920 for CC17 and around 1950 for CC23, with no year reported for CC10 [38]. Since their acquisition, TcR determinants have persisted in the human GBS population even in the absence of selective pressure, presumably as a result of low fitness cost [38]. In our study, other tetracycline resistance genes (*tet(A)* and *tet(K)*) were detected once and three times, respectively, macrolide and lincosamide resistance genes *ermB* and *lnuA* and amino-glycoside resistance gene *str* were detected once, and chloramphenicol resistance genes *cat(pC221)* and *lsaC* were detected two and five times, respectively (Table S1). The low prevalence of resistance reflects longstanding restrictive veterinary antimicrobial use policies in Sweden, and the use of narrow spectrum penicillin as drug of first choice for bovine GBS treatment [53].

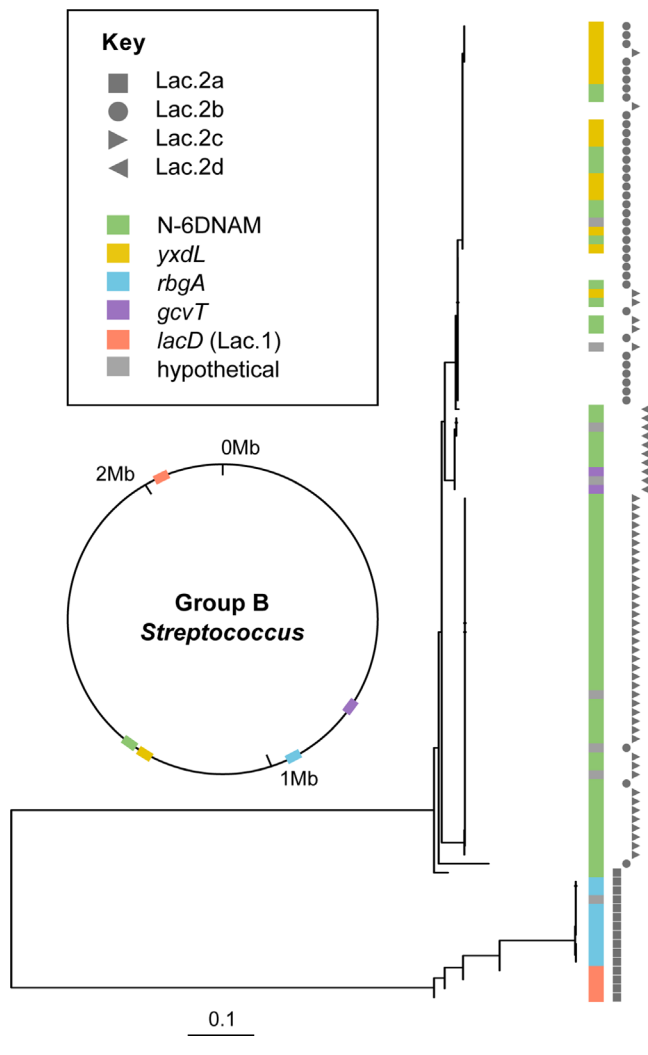


Fig. 3. Phylogeny of the Lac.2 integrase amino acid sequences from bovine group B *Streptococcus* (GBS), with their insertion site (coloured strip) and Lac.2 variant (symbols), illustrating the plasticity of the accessory genome. Insertion sites have been mapped on an example GBS genome. Gene *yxdL* was found in multiple copies within the same genome, with Lac.2 detected next to the copy present in the region around 1.25 Mbp. When Lac.2 was found at the edge of a contig, it was not possible to determine the site of integration ($n=13$, blank colour strip) and the integrase sequence ($n=10$, not present in tree).

Bovine GBS shares plasmids with human-pathogenic group A *Streptococcus* and group G *Streptococcus*

Plasmids are rarely reported in GBS [9], but using high-quality circularised hybrid assemblies of raw Nanopore and Illumina data obtained for a subset of 20 GBS isolates, we identified three plasmids and one integrative element among four complete hybrid assemblies, belonging to three different lineages (Fig. 2). Plasmid pZ2-265 (isolate MRI Z2-265, ST61, CC61, length=3617 bp, accession MW118669), was nearly identical (QC 100%, ID 99.28%) to plasmid pA996 from *Streptococcus pyogenes* or group A

Streptococcus, GAS [54]. The plasmid was detected in five isolates belonging to CC61 (twice using hybrid assembly and three times using BLASTn on short-read assemblies; Table S1). It encodes a toxin/antitoxin system, comprising a toxin of the RelE/ParE superfamily, and a prevent-host-death antitoxin (*phd*) (Fig. 2a). The latter represses transcription of the toxin and prevents host death by binding and neutralising the toxin [55]. Plasmid pZ2-174 (isolate MRI Z2-174, ST314, CC103/314, length=3041 bp, accession MW118668) showed significant similarity with plasmid pW2580 (QC 99%, ID 98.85%) from another human-associated pyogenic streptococcal species, *Streptococcus dysgalactiae* subsp. *equisimilis* or group G *Streptococcus* (GBS). This plasmid encodes the dysgalactin gene (*dysA*) (Fig. 2b), a bacteriocin directed primarily against *S. pyogenes* [56] and its immunity factor (*dysI*) [57].

GAS is uniquely associated with human hosts, and co-exists with GBS in the human oropharynx, as does GGS [7]. pW2580 may provide a survival advantage to GGS when it co-exists with GAS in the oropharynx. Exchange of plasmids or other mobile genetic elements between GAS, GBS and GGS is possible in this niche [7] and could potentially be followed by human-to-bovine transmission of GBS, as documented in epidemiological and evolutionary studies [9, 58]. The detection of two distinct plasmids with very high genetic similarity to plasmids from human pathogenic streptococci suggests that reverse zoonotic events (human-to-bovine spill-over) may have occurred more than once, with acquisition of pZ2-265 from GAS followed by spill-over and subsequent adaptation and expansion of CC61/67 in cattle, and acquisition of pZ2-174 from GGS followed by expansion of CC103/314. The proposed sequence of events is temporal rather than causal, as the functional adaptation or restriction of GBS to the bovine host is driven by other processes, notably acquisition of Lac.2 and pseudogenisation of the capsule operon [9, 17]. We speculate that the initial host jump predates the acquisition of TcR by human GBS, which is estimated to have occurred from 1917 to 1965 for different CCs [38], whilst the emergence of CC1 and CC103/314 is much more recent, as demonstrated in the current study.

The third plasmid identified in this study, pZ2-336, (isolate MRI Z2-336, ST8, CC6/10, length = 3973 bp, accession MW118670) did not show significant similarity with known plasmids. It encoded genes for plasmid mobilisation and recombination but no genes involved in bacterial protection or toxicity (Fig. 2c). In the same genome assembly, a second circular element was detected (length=19091 bp, accession MW118671), showing features of ICE or integrative mobilisable element (IME; tyrosine recombinase/integrase, relaxase), plasmids (plasmid mobilisation protein, plasmid replication initiation protein *repB*) and insertion sequences (IS; IS6 family transposase) (Fig. 2d). Additionally, it encoded genes with functions of cell adhesion (Cna protein B-type domain superfamily) and virulence factor expression (class A sortase). ICEFinder [44] identified a segment of this element (length=11068 bp) as a putative IME. Hence,

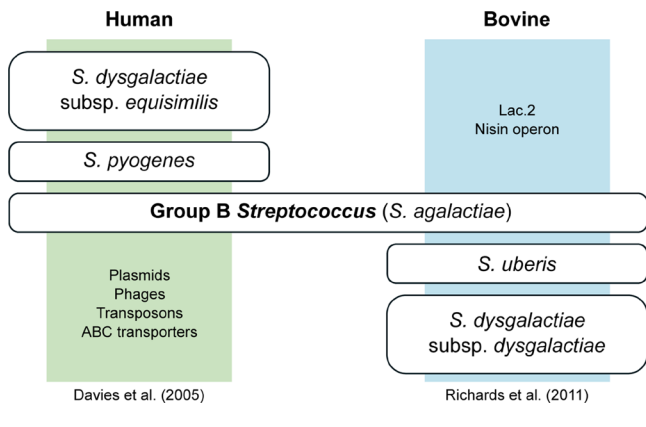


Fig. 4. Schematic representation of the relationship between the biological and ecological species concept for streptococci. The bacterial core genome defines biological species (rows) whereas the bacterial accessory genome drives and is driven by the ecological niche inhabited by the bacteria, in this case the host species (columns), creating 'ecological species'. Acquisition of host-associated mobile genetic elements through lateral transfer between pyogenic streptococcal species in one host, as described for phages, transposons, and transporters in humans [7], and for lactose and nisin operons in cattle [26], followed by transmission between host species, may explain the detection of human-associated accessory genome content in bovine group B *Streptococcus* as observed in this study for tetracycline resistance and plasmids.

this newly described element could either belong to a novel unclassified family of mobile genetic elements (MGE) or it could be an actual IME. None of the plasmids carried antimicrobial resistance genes.

Multi-host lineages of GBS occur among historic and contemporary bovine GBS isolates

Two lineages, CC23 and CC6/10, were identified among both historical and contemporary bovine isolates (Fig. 1). CC23 is a common cause of bovine mastitis in northern Europe, whilst CC6/10 is less prevalent [2, 20]. Both lineages affect humans and terrestrial and aquatic animals, including homeothermic species and poikilothermic species, e.g. seals and crocodiles, respectively, for CC23, or dolphins and fishes, respectively, for CC6/10, and are considered to be multi-host lineages [9, 59, 60]. Multiple serotypes are associated with both lineages [9]. For CC23 serotype Ia is primarily found in humans and serotype III in cattle [2, 41]. In our study, isolates from CC23 mostly belonged to serotype III although a few serotype Ia isolates were detected in both eras. Four serotypes were identified in CC6/10 (Table S1). The detection of multihost lineages among historical and contemporary isolates could reflect ongoing low-level transmission in cattle during the interim period, as suggested by the dominance of serotype III in CC23. Alternatively or additionally, it could be due to sporadic reverse zoonotic transmission, as suggested in studies from Colombia [6], Denmark [8, 41], and the USA [58], and compatible with occasional detection of CC23

isolates with the predominantly human-associated serotype Ia.

Genome plasticity facilitates host-adaptation

Based on analysis of 120 Illumina assemblies, the bovine GBS pangenome comprised 7845 genes, of which the majority (80.3% or 6297 genes) were accessory genes (989 shell genes and 5308 cloud genes), with 17.8% core genes (present in all genomes) and a minority of soft core genes (present in 95 to 99% of genomes). The lactose operon Lac.2 was detected in almost all isolates in our study (Table S1). Lac.2 encodes the metabolism of lactose, or milk sugar, which constitutes a major adaptation of bovine GBS to the mammary gland, whereas it is largely absent from human GBS [2, 26]. Integration sites for the lactose operon included the N-6 DNA methylase gene (N-6DNAM), *yxdl* (a multi-copy gene), *rbgA*, *lacD* from the Lac.1 operon [26], *gcvT* and hypothetical genes (Table S1), whereby each Lac.2 variant could be integrated at multiple sites, e.g. *lacD* or *rbgA* for Lac.2a, N-6DNAM or *yxdl* for Lac.2b and N-6DNAM or *gcvT* for Lac.2d positive isolates (Fig. 3). The latter is a new Lac.2 operon identified in this study that combines features of Lac.2a and Lac.2b (Fig. S5) [26, 41]. Phylogenetic analysis showed that closely related Lac.2 sequences can belong to different variants (Fig. S5) and multiple Lac.2 variants were identified within most STs (Table S1). The heterogeneous distribution of the lactose operon and the diversity of integration sites illustrates the genome plasticity of GBS, which facilitates acquisition of accessory genome content and migration between host species [9].

Concluding comments

Although often described as an obligate intramammary pathogen of dairy cattle in the veterinary literature, GBS is a multi-host pathogen and a host-species jumper with diverse habitats on- and off-farm [2, 9, 18]. Evolutionary evidence shows that human-to-bovine jumps are twice as likely as migration in the opposite direction [9]. Here, we provide evidence that elimination of a major bovine-adapted lineage (CC61) in Swedish dairy cattle was followed by emergence of new lineages that carry evolutionary evidence of human origin in the form of TcR markers [38], suggesting introduction of human lineages into the cattle population through reverse zoonotic transmission. Subsequently, these new lineages likely established themselves in cattle with the acquisition of the lactose operon Lac.2 [26], which represents the most important marker of the bovine-specific GBS accessory genome known to date. This sequence of events is supported by the fact that TcR is largely retained even in the absence of selective pressure [38], such as in the Swedish dairy industry where antibiotic usage is low. The lactose operon does not appear to be retained outside of the bovine host [2, 41]. Thus, TcR and Lac.2 provide historical, or long-term, and recent, or short-term, 'records' of host adaptation, respectively. Due to the unique historical nature of our isolate collection, direct comparison with genomic sequences of human isolates from the same area and era is

not possible. Such comparisons, however, are not necessary for evolutionary analysis, whereby host species jumps have commonly been inferred based on sequence data of isolates derived from different host species without known interactions or epidemiological relatedness [19, 61, 62]. For the emergence of GBS in farmed species, several routes of transmission from humans to animals can be envisaged, including, in the case of fishes, the use of human waste for nutrient recycling and, in the case of cattle, the handling and milking of cows, which may lead to direct human-to-animal transmission [6, 41, 58]. Changes in animal husbandry systems combined with pathogen evolution are the likely explanation for the re-emergence of GBS, which has been observed in several countries in Europe [2, 18, 63].

Of the two emerging lineages in cattle, CC1 is known to co-circulate in the human and bovine populations in northern Europe [2]. By contrast, CC103/314 is common in dairy cattle on multiple continents but rare in humans, with the exception of Asia. Despite its low prevalence in humans, CC103 may have emerged in cattle due to a spill-over event, with subsequent amplification in modern dairy systems. There is precedent for such a chain of events, as there is reasonable evidence that GBS ST283, which is rare among human GBS isolates, emerged in aquaculture during its intensification in Asia as the result of spill-over from humans, with acquisition of fish-associated MGE facilitating this process [3, 60]. Host switching exposes GBS to different selective pressures and sources of accessory genome content [9], including plasmids, as demonstrated for GBS, GAS and GGS in the human oropharynx [7], and other MGE, as demonstrated for the lactose operon in GBS, *Streptococcus uberis* and *Streptococcus dysgalactiae* subsp. *dysgalactiae* in the bovine udder [26]. We propose that the concept of 'genetic' and 'ecological' species, as previously described for *Thermotoga* spp. also applies to streptococci (Fig. 4) [64]. Genetic species, also known as biological species, form the basis for standard scientific nomenclature (e.g. the use of names such as *S. pyogenes*, *S. agalactiae* or *S. uberis*), and are defined by the bacterial core genome. The ecological species or ecotype concept refers to differentiation of organisms based on shared ecological niches, constraints, or adaptations [64]. The ability to thrive in a specific ecological niche is often encoded by elements of the accessory genome. For the biological species GBS, the ecospecies concept is illustrated by the sharing of niches such as the human throat or the bovine mammary gland, and the detection of ecological niche-associated, as opposed to biological species-associated, occurrence of plasmids and nutritional adaptations, such as presence the Lac.2 operon (Fig. 4). As farming systems, host contact structures, and selective pressures change, new strains and transmission routes of GBS may continue to emerge through zoonotic and reverse zoonotic transmission, potentially erasing the success of decades of disease control efforts or creating new threats to animal and public health. Control of GBS and other multi-host pathogens will require ongoing monitoring of pathogen diversity across host species and

adaptive management in response to changing selective pressures and emergence of new pathogen strains.

Funding information

This work was funded by the University of Glasgow College of Medical, Veterinary and Life Sciences Doctoral Training Programme 2017–2021 (to CC). TF was supported by a Biotechnology and Biological Sciences Research Council (BBSRC) Discovery Fellowship (FORDE/BB/R012075/1). SL was supported by a University of Edinburgh Chancellor's Fellowship and the BBSRC Institute Strategic Programme Grant: Control of Infectious Diseases BBS/E/D/20002173 to the Roslin Institute. MAH was funded by Medical Research Council awards MR/P007201/1 and MR/N002660/1.

Acknowledgements

We thank Ian Heron and John Bell from the Moredun Research Institute for laboratory assistance, Kirstyn Brunner from the University of Glasgow for helping with the setup of Oxford Nanopore sequencing in the OHRBID laboratory, and Dr Ennio Lavagnini from the University of Cambridge for advice on development of the genome assembly pipeline for short paired-end reads.

Author contributions

Conceptualisation: K.P.W., and R.N.Z. Isolate and data curation: K.P.W., C.F., M.A.H., and R.N.Z. Formal analysis, investigation, methodology, visualisation: C.C., Supervision: T.F., S.L., and R.N.Z. Writing original draft: C.C., and R.N.Z. Writing review and editing: C.C., R.N.Z., T.F., M.A.H., S.L., K.P.W.

Conflicts of interest

The authors declare that there are no conflicts of interest.

References

- Seale AC, Bianchi-Jassir F, Russell NJ, Kohli-Lynch M, Tann CJ, et al. Estimates of the burden of group B streptococcal disease worldwide for pregnant women, stillbirths, and children. *Clin Infect Dis* 2017;65:S200–S219.
- Lyhs U, Kulkas L, Katholm J, Persson-Waller K, Saha K, et al. *Streptococcus agalactiae* serotype IV in humans and cattle, Northern Europe. *Emerg Infect Dis* 2016;22:2097.
- Barkham T, Zadoks RN, Azmai MNA, Baker S, Bich VTN, et al. One hypervirulent clone, sequence type 283, accounts for a large proportion of invasive *Streptococcus agalactiae* isolated from humans and diseased tilapia in Southeast Asia. *PLoS Negl Trop Dis* 2019;13:e0007421.
- Kwatra G, Cunningham MC, Merrall E, Adrian PV, Ip M, et al. Prevalence of maternal colonisation with group B *Streptococcus*: a systematic review and meta-analysis. *Lancet Infect Dis* 2016;16:1076–1084.
- van der Mee-Marquet N, Fourny L, Arnault L, Domelier AS, Salloum M, et al. Molecular characterization of human-colonizing *Streptococcus agalactiae* strains isolated from throat, skin, anal margin, and genital body sites. *J Clin Microbiol* 2008;46:2906–2911.
- Cobo-Ángel CG, Jaramillo-Jaramillo AS, Palacio-Aguilera M, Jurado-Vargas L, Calvo-Villegas EA, et al. Potential group B *Streptococcus* interspecies transmission between cattle and people in Colombian dairy farms. *Sci Rep* 2019;9:1–9.
- Davies MR, Tran TN, McMillan DJ, Gardiner DL, Currie BJ, et al. Inter-species genetic movement may blur the epidemiology of streptococcal diseases in endemic regions. *Microbes Infect* 2005;7:1128–1138.
- Mweu MM, Nielsen S, Halasa T, Toft N. Annual incidence, prevalence and transmission characteristics of *Streptococcus agalactiae* in Danish dairy herds. *Prev Vet Med* 2012;106:244–250.
- Richards VP, Velsko IM, Alam T, Zadoks RN, Manning SD, et al. Population gene introgression and high genome plasticity for the zoonotic pathogen *Streptococcus agalactiae*. *Mol Biol Evo* 2019;36:2572–2590.

10. Riekerink R, Barkema HW, Scholl DT, Poole DE, Kelton DF. Management practices associated with the bulk-milk prevalence of *Staphylococcus aureus* in Canadian dairy farms. *Prev Vet Med* 2010;97:20–28.
11. Zadoks RN, Fitzpatrick JL. Changing trends in mastitis. *Ir Vet J* 2009;62:1–12.
12. Piepers S, De Meulemeester L, de Kruif A, Opsomer G, Barkema HW, et al. Prevalence and distribution of mastitis pathogens in subclinically infected dairy cows in Flanders, Belgium. *J Dairy Res* 2007;74:478–483.
13. Pitkälä A, Haveri M, Pyörälä S, Myllys V, Honkanen-Buzalski T. Bovine mastitis in Finland 2001—prevalence, distribution of bacteria, and antimicrobial resistance. *J Dairy Sci* 2004;87:2433–2441.
14. Sampimon O, Barkema HW, Berends I, Sol J, Lam T. Prevalence of intramammary infection in Dutch dairy herds. *J Dairy Res* 2009;76:129–136.
15. Heymann DL. Control, elimination, eradication and re-emergence of infectious diseases: getting the message right. *Bull World Health Organ* 2006;84:82.
16. Bisharat N, Crook DW, Leigh J, Harding RM, Ward PN, et al. Hyper-invasive neonatal group B *Streptococcus* has arisen from a bovine ancestor. *J Clin Microbiol* 2004;42:2161–2167.
17. Almeida A, Alves-Barroco C, Sauvage E, Bexiga R, Albuquerque P, et al. Persistence of a dominant bovine lineage of group B *Streptococcus* reveals genomic signatures of host adaptation. *Environ Microbiol* 2016;18:4216–4229.
18. Jørgensen HJ, Nordstoga AB, Sviland S, Zadoks RN, Sølverød L, et al. *Streptococcus agalactiae* in the environment of bovine dairy herds—rewriting the textbooks? *Vet Microbiol* 2016;184:64–72.
19. Weinert LA, Welch JJ, Suchard MA, Lemey P, Rambaut A, et al. Molecular dating of human-to-bovid host jumps by *Staphylococcus aureus* reveals an association with the spread of domestication. *Biol Lett* 2012;8:829–832.
20. Zadoks RN, Middleton JR, McDougall S, Katholm J, Schukken YH. Molecular epidemiology of mastitis pathogens of dairy cattle and comparative relevance to humans. *J Mammary Gland Biol Neoplasia* 2011;16:357–372.
21. Smeds L, Künstner A. ConDeTri—a content dependent read trimmer for Illumina data. *PLoS One* 2011;6:e26314.
22. Bankevich A, Nurk S, Antipov D, Gurevich AA, Dvorkin M, et al. SPAdes: a new genome assembly algorithm and its applications to single-cell sequencing. *J Comput Biol* 2012;19:455–477.
23. Gurevich A, Saveliev V, Vyahhi N, Tesler G. QUAST: quality assessment tool for genome assemblies. *Bioinformatics* 2013;1072–1075.
24. Waskom ML. Seaborn: statistical data visualization. *Journal of Open Source Software* 2021;6:3021.
25. Larsen MV, Cosentino S, Lukjancenko O, Saputra D, Rasmussen S. Benchmarking of methods for genomic taxonomy. *J Clin Microbiol* 2014;52:1529–1539.
26. Richards VP, Lang P, Bitar PDP, Lefebvre T, Schukken YH, et al. Comparative genomics and the role of lateral gene transfer in the evolution of bovine adapted *Streptococcus agalactiae*. *Infect Genet Evol* 2011;11:1263–1275.
27. Jain M, Olsen HE, Paten B, Akeson M. The Oxford Nanopore MinION: delivery of nanopore sequencing to the genomics community. *Genome Biol* 2016;17:239.
28. Wick RR, Judd LM, Holt KE. Performance of neural network basecalling tools for Oxford Nanopore sequencing. *Genome Biol* 2019;20:129.
29. Wick RR, Judd LM, Gorrie CL, Holt KE. Unicycler: resolving bacterial genome assemblies from short and long sequencing reads. *PLoS Comp Biol* 2017;13:e1005595.
30. Treangen TJ, Ondov BD, Koren S, Phillippy AM. The Harvest suite for rapid core-genome alignment and visualization of thousands of intraspecific microbial genomes. *Genome Biol* 2014;15:524.
31. Kozlov AM, Darriba D, Flouri T, Morel B, Stamatakis A. RAxML-NG: a fast, scalable and user-friendly tool for maximum likelihood phylogenetic inference. *Bioinformatics* 2019;35:4453–4455.
32. Letunic I, Bork P. Interactive Tree Of Life (iTOL): an online tool for phylogenetic tree display and annotation. *Bioinformatics* 2006;23:127–128.
33. Seemann T. Prokka: rapid prokaryotic genome annotation. *Bioinformatics* 2014;30:2068–2069.
34. Page AJ, Cummins CA, Hunt M, Wong VK, Reuter S, et al. Roary: rapid large-scale prokaryote pan genome analysis. *Bioinformatics* 2015;31:3691–3693.
35. Huson DH. SplitsTree: analyzing and visualizing evolutionary data. *Bioinformatics* 1998;14:68–73.
36. Inouye M, Dashnow H, Raven LA, Schultz MB, Pope BJ, et al. SRST2: rapid genomic surveillance for public health and hospital microbiology labs. *Genome Med* 2014;6:90.
37. Metcalf BJ, Chochua S, Gertz RE, Hawkins PA, Ricaldi J, et al. Short-read whole genome sequencing for determination of antimicrobial resistance mechanisms and capsular serotypes of current invasive *Streptococcus agalactiae* recovered in the USA. *Clin Microbiol Infect* 2017;23:574–e7.
38. Cunha D, Davies MR, Douarre PE, Rosinski-Chupin I, Margarit I, et al. *Streptococcus agalactiae* clones infecting humans were selected and fixed through the extensive use of tetracycline. *Nat Commun* 2014;5:ncmms5544.
39. Sheppard AE, Vaughan A, Jones N, Turner P, Turner C, et al. Capsular typing method for *Streptococcus agalactiae* using whole-genome sequence data. *J Clin Microbiol* 2016;54:1388–1390.
40. Zankari E, Hasman H, Cosentino S, Vestergaard M, Rasmussen S, et al. Identification of acquired antimicrobial resistance genes. *J Antimicrob Chemother* 2012;67:2640–2644.
41. Sørensen UBS, Klaas IC, Boes J, Farre M. The distribution of clones of *Streptococcus agalactiae* (group B streptococci) among herdspersons and dairy cows demonstrates lack of host specificity for some lineages. *Vet Microbiol* 2019;235:71–79.
42. Zeng L, Das S, Burne RA. Utilization of lactose and galactose by *Streptococcus mutans*: transport, toxicity, and carbon catabolite repression. *J Bacteriol* 2010;192:2434–2444.
43. Hunt M, Mather AE, Sánchez-Busó L, Page AJ, Parkhill J, et al. ARIBA: Rapid antimicrobial resistance genotyping directly from sequencing reads. *Microb Genom* 2017;3:e000131.
44. Liu M, Li X, Xie Y, Bi D, Sun J, et al. ICEberg 2.0: An updated database of bacterial integrative and conjugative elements. *Nucleic Acids Res* 2019;47:D660–D665.
45. Katoh K, Standley DM. MAFFT multiple sequence alignment software version 7: improvements in performance and usability. *Mol Biol Evol* 2013;30:772–780.
46. Kearse M, Moir R, Wilson A, Stones-Havas S, Cheung M, et al. Geneious Basic: an integrated and extendable desktop software platform for the organization and analysis of sequence data. *Bioinformatics* 2012;28:1647–1649.
47. Li L, Wang R, Huang Y, Huang T, Luo F, et al. High incidence of pathogenic *Streptococcus agalactiae* ST485 strain in pregnant/ puerperal women and isolation of hyper-virulent human CC67 strain. *Front Microbiol* 2018;9:50.
48. Luan SL, Granlund M, Sellin M, Lagergård T, Spratt BG, et al. Multi-locus sequence typing of Swedish invasive group B *Streptococcus* isolates indicates a neonatally associated genetic lineage and capsule switching. *J Clin Microbiol* 2005;43:3727–3733.
49. Boonyayatra S, Wongsathein D, Tharavichitkul P. Genetic relatedness among *Streptococcus agalactiae* isolated from cattle, fish, and humans. *Foodborne Pathog Dis* 2019;17:137–143.
50. Hsu JF, Chen CL, Lee CC, Lien R, Chu SM, et al. Characterization of group B *Streptococcus* colonization in full-term and late-preterm neonates in Taiwan. *Pediatr Neonatol* 2019;60:311–317.
51. Wu B, Su J, Li L, Wu W, Wu J, et al. Phenotypic and genetic differences among group B *Streptococcus* recovered from neonates and pregnant women in Shenzhen, China: 8-year study. *BMC Microbiol* 2019;19:185.

52. Yang Y, Liu Y, Ding Y, Yi L, Ma Z, et al. Molecular characterization of *Streptococcus agalactiae* isolated from bovine mastitis in Eastern China. *PLoS One* 2013;8:e67755.
53. European Medicines Agency (EMA). Sales of veterinary antimicrobial agents in 31 European countries in 2017 - Trends from 2010 to 2017. EMA/294674/2019. 2019.
54. Bergmann R, Nerlich A, Chhatwal GS, Nitsche-Schmitz DP. Distribution of small native plasmids in *Streptococcus pyogenes* in India. *Int J Med Microbiol* 2014;304:370–378.
55. Smith JA, Magnuson RD. Modular organization of the Phd repressor/antitoxin protein. *J Bacteriol* 2004;186:2692–2698.
56. Heng NCK, Ragland NL, Swe PM, Baird HJ, Inglis MA, et al. Dysgalactin: a novel, plasmid-encoded antimicrobial protein (bacteriocin) produced by *Streptococcus dysgalactiae* subsp. *equisimilis*. *Microbiology* 2006;152:1991–2001.
57. Swe PM, Heng NCK, Cook GM, Tagg JR, Jack RW. Identification of Dysl, the immunity factor of the streptococcal bacteriocin dysgalactin. *Appl Environ Microbiol* 2010;76:7885–7889.
58. Dogan B, Schukken YH, Santisteban C, Boor KJ. Distribution of serotypes and antimicrobial resistance genes among *Streptococcus agalactiae* isolates from bovine and human hosts. *J Clin Microbiol* 2005;43:5899–5906.
59. Leal CAG, Queiroz GA, Pereira FL, Tavares GC, Figueiredo HCP. *Streptococcus agalactiae* sequence type 283 in farmed fish. *Brazil Emerg Infect Dis* 2019;25:776.
60. Delannoy CMJ, Crumlish M, Fontaine MC, Pollock J, Foster G, et al. Human *Streptococcus agalactiae* strains in aquatic mammals and fish. *BMC Microbiol* 2013;13:41.
61. Lowder BV, Guinane CM, Zakour NLB, Weinert LA, Conway-Morris A. Recent human-to-poultry host jump, adaptation, and pandemic spread of *Staphylococcus aureus*. *Proc Natl Acad Sci U S A* 2009;106:19545–19550.
62. Shephard MA, Fleming VM, Connor TR, Corander J, Feil EJ. Historical zoonoses and other changes in host tropism of *Staphylococcus aureus*, identified by phylogenetic analysis of a population dataset. *PLoS One* 2013;8:e62369.
63. Katholm J, Bennedsgaard TW, Koskinen MT, Rattenborg E. Quality of bulk tank milk samples from Danish dairy herds based on real-time polymerase chain reaction identification of mastitis pathogens. *J Dairy Sci* 2012;95:5702–5708.
64. Nesbø CL, Dlutek M, Doolittle WF. Recombination in *Thermotoga*: implications for species concepts and biogeography. *Genetics* 2006;172:759–769.

Five reasons to publish your next article with a Microbiology Society journal

1. The Microbiology Society is a not-for-profit organization.
2. We offer fast and rigorous peer review – average time to first decision is 4–6 weeks.
3. Our journals have a global readership with subscriptions held in research institutions around the world.
4. 80% of our authors rate our submission process as 'excellent' or 'very good'.
5. Your article will be published on an interactive journal platform with advanced metrics.

Find out more and submit your article at microbiologyresearch.org.