


Local variations of the Stellar Velocity Ellipsoid-I: the disc of galaxies in the Auriga simulations

Daniel Walo-Martín ^{1,2}★ Isabel Pérez,^{3,4} Robert J. J. Grand ⁵, Jesús Falcón-Barroso,^{1,2} Francesca Pinna ⁶ and Marie Martig⁷

¹*Instituto de Astrofísica de Canarias, Calle Vía Láctea s/n, E-38205 La Laguna, Tenerife, Spain*

²*Departamento de Astrofísica, Universidad de La Laguna, Av. del Astrofísico Francisco Sánchez s/n, E-38206 La Laguna, Tenerife, Spain*

³*Departamento de Física Teórica y del Cosmos, Universidad de Granada, Facultad de Ciencias (Edificio Mecenas), E-18071 Granada, Spain*

⁴*Instituto Carlos I de Física Teórica y Computación, Facultad de Ciencias, E-18071 Granada, Spain*

⁵*Max-Planck-Institut für Astrophysik, Karl-Schwarzschild-Str 1, D-85748 Garching, Germany*

⁶*Max-Planck-Institut für Astronomie, Königstuhl 17, D-69117 Heidelberg, Germany*

⁷*Astrophysics Research Institute, Liverpool John Moores University, 146 Brownlow Hill, Liverpool L3 5RF, UK*

Accepted 2021 June 7. Received 2021 June 7; in original form 2021 March 26

ABSTRACT

The connection between the Stellar Velocity Ellipsoid (SVE) and the dynamical evolution of galaxies has been a matter of debate in the last years and there is no clear consensus whether different heating agents (e.g. spiral arms, giant molecular clouds, bars and mergers) leave clear detectable signatures in the present day kinematics. Most of these results are based on a single and global SVE and have not taken into account that these agents do not necessarily equally affect all regions of the stellar disc. We study the two-dimensional (2D) spatial distribution of the SVE across the stellar discs of Auriga galaxies, a set of high resolution magnetohydrodynamical cosmological zoom-in simulations, to unveil the connection between local and global kinematic properties in the disc region. We find very similar, global, $\sigma_z/\sigma_r = 0.80 \pm 0.08$ values for galaxies of different Hubble types. This shows that the global properties of the SVE at $z = 0$ are not a good indicator of the heating and cooling events experienced by galaxies. We also find that similar σ_z/σ_r radial profiles are obtained through different combinations of σ_z and σ_r trends: at a local level, the vertical and radial components can evolve differently, leading to similar σ_z/σ_r profiles at $z = 0$. By contrast, the 2D spatial distribution of the SVE varies a lot more from galaxy to galaxy. Present day features in the SVE spatial distribution may be associated with specific interactions such as fly-by encounters or the accretion of low mass satellites even in the cases when the global SVE is not affected. The stellar populations decomposition reveals that young stellar populations present colder and less isotropic SVEs and more complex 2D distributions than their older and hotter counterparts.

Key words: galaxies: evolution – galaxies: formation – galaxies: general – galaxies: kinematics and dynamics – galaxies: spiral.

1 INTRODUCTION

Late-type galaxies are systems dominated by rotation where most of the stars in the disc are expected to rotate in near circular orbits (epicycle approximation). Nevertheless, the presence of different structures is expected to modify the orbit of stars and leave distinct. For example, features such as a double thin-thick disc structure (Burstein 1979; Tsikoudi 1979), warps (Reshetnikov & Combes 1998; Ann & Park 2006; Reshetnikov et al. 2016), rings (Few & Madore 1986), single and double bars (Shlosman, Frank & Begelman 1989; de Lorenzo-Cáceres et al. 2019), disc breaks (van der Kruit 1979; Pohlen et al. 2004; Martín-Navarro et al. 2012), and spiral arms (Danver 1942; Bittner et al. 2020a) leave different imprints in the kinematics and stellar populations properties that help us disentangle different evolutionary paths (Pinna et al. 2019; Gadotti et al. 2020; Rosado-Belza et al. 2020; Bittner et al. 2020b)

This type of analysis is extremely useful in the Milky Way, where we have access to the full six-dimensional (6D) information

(positions and velocities), chemical abundances, and ages of the stars. Thanks to missions like *GAIA* (Gaia Collaboration et al. 2016) and APOGEE (Majewski et al. 2017), we now have access to the properties of millions of stars in a large region of our Galaxy which allows us to study the spatial variations of the stellar kinematics beyond the solar neighbourhood.

The kinematics of stars within a volume can be characterized by the 3D distribution of velocities through the Stellar Velocity Ellipsoid (SVE). In a cylindrical rest frame, the SVE is represented by the velocity dispersion tensor whose diagonal elements and their ratios determine the level of random motions in the vertical, σ_z , radial, σ_r , and azimuthal directions, σ_ϕ . Their ratio determines the shape of the ellipsoidal distribution. For instance, the spatial variations of the individual components and the shape of the SVE across the disc of our Galaxy for different stellar populations have been used to determine the existence of different heating mechanisms in the inner and outer parts (Mackereth et al. 2019). On the other hand, the off-diagonal terms σ_{zr} , $\sigma_{z\phi}$, and $\sigma_{\phi r}$ determine the inclination of the velocity ellipsoid which is crucial to determine the distribution of baryonic and dark matter in the Galaxy. In particular, the inclination of the SVE in the ZR plane, known as the tilt angle, is important to

* E-mail: dwalo@iac.es, danielwalo@hotmail.com

properly determine the dark matter distribution in the galactic plane (Büdenbender, van de Ven & Watkins 2015; Everall et al. 2019; Hagen et al. 2019). Furthermore, the inclination on the radial and azimuthal plane, so-called vertex deviation, in the inner regions of our galaxy allows to study the presence of non-axisymmetries such as triaxial bulges or bars (Zhao, Spergel & Rich 1994; Soto, Rich & Kuijken 2007; Simion et al. 2021).

Unfortunately in external galaxies, we do not have access to the properties of individual stars and it is difficult to perform a similar analysis. In the case of kinematics, we only have access to the line-of-sight-velocity-distribution (LOSVD) which can be studied through parametric (van der Marel & Franx 1993; Emsellem et al. 2011; van de Sande et al. 2017) and non-parametric techniques (e.g. Falcon-Barroso & Martig 2020). Therefore to obtain the SVE parameters, it is generally assumed that galaxies are in hydrostatic equilibrium and isothermal in the vertical direction (van der Kruit & Searle 1981; van der Kruit 1988), in the epicycle approximation, the individual velocity dispersions components follow an exponential distribution (Shapiro, Gerssen & van der Marel 2003) and that the axial ratios of the SVE are constant across the disc.

It is true that no galaxy is completely isolated and in steady-state, nor have a simple axisymmetric potential, but without these kind of assumptions, it would not be possible to estimate the vertical velocity dispersion, σ_z , even in low inclination galaxies where σ_z and the line of sight velocity dispersions are very similar (Martinsson et al. 2013). Furthermore, even though these assumptions simplify the complexity of these systems, with this type of approach, we can still learn important information such as the mass of supermassive black holes (Kormendy & Ho 2013) and dark matter haloes (Courteau et al. 2014) using approximated dynamical models.

Under these assumptions, Gerssen & Shapiro Griffin (2012) studied the SVE of mildly inclined galaxies with different Hubble types and found a tight correlation between the morphological type and the σ_z/σ_r , where earlier type galaxies exhibited more isotropic ellipsoids. On the contrary, Pinna et al. (2018; P18, hereafter) compiled the SVE axial ratios for a larger sample from the literature and found that this relation no longer holds. This result was further supported by the analysis of late-type simulated galaxies, where the σ_z/σ_r ratio did not follow any obvious trend with the morphological type. Further, they studied the time evolution of the SVE and revealed that heating and ‘cooling’ agents act at the same time and therefore the present day value of the SVE shape is not enough to infer the dynamical evolution of the galaxy.

Thus, it is clear that the SVE of external galaxies is still not well-known and we need higher spectral resolution observations to increase the quality and statistics of these analyses. On the other hand, theoretical studies on the SVE properties are required to provide testable predictions for these upcoming observations. To that end, cosmological zoom-in simulations of late-type galaxies such as Auriga (Grand et al. 2017), NIHAO-UHD (Buck et al. 2020), and FIRE¹ are extremely useful to study the evolution of different stellar properties across the galactic disc in a cosmological environment mimicking the results from coming observations.

In this work, we aim to study the SVE of Milky-Way mass galaxies and, in particular, its local variation across the disc. We will focus on the Auriga galaxies, a set 30 zoom-in magnetohydrodynamical cosmological simulations of late-type galaxies with different morphologies and evolution histories. These simulations successfully reproduce many present day observables such as stellar

masses, sizes, rotation curves, star formation rates, and metallicities (Grand et al. 2017). In addition, these galaxies present a variety of morphological features such as bars of different lengths, breaks (Blázquez-Calero et al. 2020), pseudo-bulges (Gargiulo et al. 2019), and warps (Gómez et al. 2017). Thus, the Auriga sample is the ideal testbed because it will allow us to analyse the impact of external agents and different secular evolution processes in the SVE of high resolution disc galaxies in a cosmological environment.

This paper is organized as follows. In Section 2, we present the Auriga simulations, the sample selection and the methodology used to analyse the SVE. In Section 3, we study the connection between the global values of σ_z/σ_r and the morphology of galaxies. In Section 4, we show the spatial variation of σ_z/σ_r across the disc. In Section 5, we analyse the time evolution of the SVE at both global and local level. Section 6 presents the variations of σ_z/σ_r for different populations. In Section 7, we sum up our conclusions.

Throughout the text, we will prefix units of length with ‘c’ to denote comoving scales e.g. ckpc for comoving kiloparsecs. Units without prefix should be interpreted as physical scales.

2 METHODOLOGY

2.1 The Auriga simulations

The Auriga project (Grand et al. 2017) consists of 30 zoom-in high-resolution simulations of haloes taken from the largest volume Dark Matter Only simulation of EAGLE (L100N1504) presented in Schaye et al. (2015). Simulations were performed with the N-body, magnetohydrodynamics (MHD) code AREPO (Springel 2010). We label each simulation by ‘Au - N’ with N ranging between 1 and 30. Simulations adopt the cosmological values taken from Planck Collaboration XVI (2014) ($\Omega_m = 0.307$, $\Omega_b = 0.048$, $\Omega_\Lambda = 0.693$, and $H_0 = 100 \text{ h km s}^{-1} \text{ Mpc}^{-1}$, where $h = 0.6777$). Dark matter and star particles have a typical mass of $m_{\text{DM}} \sim 3 \times 10^5 M_\odot$ and $m_b \sim 5 \times 10^4 M_\odot$. In this work, we show results from simulations with these mass resolutions, which correspond to a level-4 resolution (see table 2 in Grand et al. 2017, to find the characteristics of different resolution levels) if not otherwise specified. The comoving softening length for star and dark matter particles is set to $500 h^{-1} \text{ cpc}$ before $z = 1$, when the simulation adopts a physical gravitational softening length of 369 pc. Groups and subhaloes were identified by the friend-of-friends (Davis et al. 1985) and SUBFIND (Springel et al. 2001) algorithms, respectively, and merger trees were constructed with the LHaloTree algorithm described in Springel et al. (2005). The Auriga simulations include an updated version of the sub-grid modules used in Marinacci, Pakmor & Springel (2014a) and Marinacci et al. (2014b) to account for physical processes that act below the resolution limit of the simulation. We refer the reader to Grand et al. (2017) for a complete description of the models and the modifications introduced.

We do not include in our study AU_11, AU_20, AU_29, and AU_30 because they exhibit strong signs of interactions in their $z = 0$ surface brightness maps. From the final sample of 26 galaxies, almost three quarters are barred systems (20 of them) and their structural properties are presented in Blázquez-Calero et al. (2020).

2.2 SVE characterization

To obtain the SVE, we first place the disc of the galaxy into the XY plane by rotating the angular momentum vector of stars younger than 3 Gyr within a sphere of 60 kpc of radius around the centre of potential. This angular momentum is dominated by the young thin disc which is less affected by external agents and guarantees that

¹<https://fire.northwestern.edu>

the galaxy is properly rotated even when it is interacting with its satellites. Then, to get the face-on view, we project galaxies along the Z axis on to a square grid of 0.5×0.5 kpc pixel. The number of particles decreases as we get further away from the centre and so the information obtained from the individual pixels loses statistical significance in the outer regions of the galaxy. To ensure that we have a minimum number of particles, we use the Voronoi binning routine of Cappellari & Copin (2003) to combine cells so every parameter is inferred with a minimum of 500 particles. This number of particles is larger than the typical 100 particles requirement used by Schulze et al. (2018) or Walo-Martín et al. (2020) even though the mass resolution of Auriga is 2 and 100 times better than the simulations analysed in these works. Furthermore, at that spatial resolution imposed by that binning, it is still possible to distinguish spiral arms even in the outer parts of the galaxies. When stellar particles are divided into different populations, we will use the term standard to denote quantities derived from all the stellar particles.

To characterize the SVE, we use a cylindrical rest frame and we calculate the vertical (σ_z) and radial (σ_r) velocity dispersions and the axial ratio σ_z/σ_r in each bin. We notice that the complete analysis of the ellipsoid should include the azimuthal velocity dispersion, σ_ϕ , and one of the remaining axial ratios σ_ϕ/σ_r or σ_z/σ_ϕ . Since the number of observational works concerning the SVE variations is quite limited and, in general, is focused to the vertical and radial components, we decided to restrict our analysis to these components (see P18, for an extensive analysis of the three components of the global SVE).

In this work, we also want to characterize the global SVE properties of the disc through the median σ_z , σ_r , and σ_z/σ_r . To properly select the disc dominated region, we use the length of the bar, L_{bar} , measured by Blázquez-Calero et al. (2020) and the disc scale length, R_d , from (Grand et al. 2017) as the beginning of the disc dominated region, for barred and unbarred systems, respectively. We only include all the bins with V -band surface brightness, μ_V , under $25 \text{ mag arcsec}^{-2}$. Thus, we exclude the innermost parts which are affected by structures such as bars and bulges and the low surface brightness region in the outskirts with undesirable large bins.

3 HUBBLE TYPE RELATION

In Section 1, we presented that there is a controversy about the connection between the shape of the SVE and the morphological type of a galaxy. The earlier results of Gerssen & Shapiro Griffin (2012) showed that later type galaxies presented more oblate ellipsoids. On the other hand, P18 analysis of photometric observations (van der Kruit & de Grijs 1999), spectroscopic decomposition of the line of sight (Emsellem, Dejonghe & Bacon 1999; Tempel & Tenjes 2006; Cappellari et al. 2007; Kipper et al. 2016), and dynamical models (Emsellem et al. 1999; Tempel & Tenjes 2006; Cappellari et al. 2007; Kipper et al. 2016) did not exhibit such relation. In addition, P18 found that the simulations from Martig et al. (2012) and Martínez-Valpuesta et al. (2017) do not favour a scenario where σ_z/σ_r is connected with morphology. We refer the reader to sections 2 and 4 of P18 for a detailed analysis of each observational data set and the adequacy of the different simulations. As far as we know, this connection has not been further explored from the observational or theoretical point of view. Thus, we now study the SVE of Auriga galaxies to investigate this aspect in an independent data set of simulations. The Hubble type of barred galaxies is based on the morphological classification of Blázquez-Calero et al. (2020) (see Table 1 in their work), while the six remaining unbarred galaxies have been visually classified in this work.

In Fig. 1, we show the σ_z/σ_r values of galaxies as a function of their morphological Hubble type. Different symbols and colours have been used according to the source and type of the data. Red squares represent galaxies in the Auriga sample, with median σ_z/σ_r values in the 0.71–0.98 range and morphologies from Sa to Sc (see Table 1 for the individuals values in the sample). The red vertical line in the bottom left-hand part of the diagram indicates the average σ_z/σ_r scatter between the different bins (0.15) in the disc region for our sample. Yellow and light green circles show the axial ratios for the simulations and observations presented in P18. Both data sets contain galaxies with earlier and later morphologies than in Auriga. This observational data set presents the smallest SVE axial ratio values which close to the critical value above which galaxy discs are predicted to be stable against bending perturbations: σ_z/σ_r 0.3 (Toomre 1964). The magenta star and shaded region represent the Milky-Way values from Mackereth et al. (2019) with $\sigma_z/\sigma_r = 0.64 \pm 0.04$. Furthermore, we represent with blue diamonds the σ_z/σ_r values for 34 galaxies from the CALIFA survey (Sánchez et al. 2012, see their table 2). These values were obtained from Mogotsi & Romeo (2019), who analysed the radial profiles of the radial velocity dispersions for 34 galaxies. Mogotsi & Romeo (2019) derived these values were from the anisotropy parameters $\beta_z = 1 - \sigma_z^2/\sigma_r^2$ obtained by Kalinova et al. (2017) using Jeans modelling. We did not include the results for NGC 5614, UGC 04132, and UGC 09892 because they present too large uncertainties. Some observed galaxies present σ_z/σ_r values above unity, which can be naturally produced by galaxy mergers and satellite accretion (see Fig. 5 and the analysis in Section 5 for a detailed analysis).

We first notice that there is no strong correlation between the σ_z/σ_r ratio and the morphology of Auriga galaxies, in agreement with P18. Nevertheless, Auriga and P18 data sets (both observational and simulated) present a moderate Spearman correlation coefficient around -0.45 and p -values below 1 percent. We have further explored the relation between σ_z/σ_r and other more quantitative proxies of galaxy morphology e.g. the gas fraction, stellar mass, and disc mass fraction (D/T) but both correlation coefficients and p -values showed significantly weaker connections. On the other hand, we find that there is a small difference between the simulated samples. Auriga galaxies present larger σ_z/σ_r values with an average value of 0.80 ± 0.08 while simulated galaxies from P18 have an average σ_z/σ_r of 0.60 ± 0.15 . We have confirmed that this apparent discrepancy is not caused by differences in the stellar mass distribution of the samples. In particular, for galaxies with morphologies between Sa and Sd the distributions are very similar with average values of $4.8 \times 10^{10} M_\odot$ in P18 and $6.6 \times 10^{10} M_\odot$ in our sample, which precludes that our results are biased due to the mass function of Auriga. On the other hand, the aim of this work is not to determine the difference in the ellipsoid of different sets of simulations, but to show the existence or not of a correlation between the SVE and the morphology of a galaxy. It is no surprise that the results differ slightly given that each set of simulations use their own subgrid modules to implement the physics that take places at scales below the spatial resolution of the simulation and that they use different algorithms e.g. Auriga uses AREPO, while Martig et al. (2012) use a particle-mesh code with gas dynamics modelled with a sticky-particle algorithm. We note that the precise values of σ_z/σ_r are likely affected by many different effects, including numerical heating (e.g. Rodionov & Sotnikova 2013; Sellwood 2013) and details of the subgrid ISM/feedback model. Determining the role of each of these effects is beyond the scope of this paper, which we defer to a dedicated future study.

Table 1. Parameters of the Auriga galaxies properties at $z = 0$. SVE parameters indicate the median and 1σ scatter across the disc dominated region.

Name	Hubble type	$R_{0, \text{disc}}$ (kpc)	$M(10^{10} M_{\odot})$	σ_z (km s^{-1})	σ_r (km s^{-1})	σ_z/σ_r	Category
AU1	SBb	4.07	2.75	58 ± 8	76 ± 10	0.77 ± 0.08	PR
AU2	SBc	8.99	7.05	45 ± 6	65 ± 7	0.69 ± 0.06	HIAR
AU3	Sb	7.26	7.75	51 ± 7	60 ± 12	0.83 ± 0.07	IAR
AU4	Sbc	3.93	7.10	112 ± 12	125 ± 8	0.90 ± 0.07	PR
AU5	SBb	4.58	6.72	62 ± 7	80 ± 7	0.78 ± 0.06	HIAR
AU6	SBbc	5.43	4.75	50 ± 6	66 ± 6	0.76 ± 0.06	PR
AU7	SBb	5.43	4.88	75 ± 8	106 ± 9	0.71 ± 0.05	PR
AU8	Sc	6.57	2.99	53 ± 6	71 ± 8	0.76 ± 0.06	SAR
AU9	SBb	6.45	6.10	59 ± 8	78 ± 7	0.75 ± 0.07	AR
AU10	SBa	6.45	5.94	82 ± 14	95 ± 11	0.91 ± 0.15	AR
AU12	SBab	3.73	6.01	73 ± 9	91 ± 14	0.82 ± 0.10	PR
AU13	SBa	5.43	6.19	101 ± 10	103 ± 8	0.97 ± 0.07	PR
AU14	SBb	5.09	10.39	95 ± 8	98 ± 8	0.97 ± 0.08	PR
AU15	Sbc	5.32	3.93	59 ± 7	75 ± 8	0.79 ± 0.06	PR
AU16	Sc	9.03	5.41	53 ± 9	64 ± 12	0.82 ± 0.06	PR
AU17	SBa	5.43	7.61	69 ± 7	97 ± 5	0.72 ± 0.08	AR
AU18	SBb	6.45	8.04	65 ± 11	80 ± 5	0.83 ± 0.13	AR
AU19	Sbc	4.81	5.32	69 ± 9	98 ± 9	0.71 ± 0.05	HIAR
AU21	SBb	3.39	7.72	71 ± 9	86 ± 9	0.84 ± 0.07	PR
AU22	SBa	6.28	6.02	85 ± 6	91 ± 7	0.94 ± 0.07	AR
AU23	SBbc	9.5	9.02	64 ± 8	87 ± 7	0.74 ± 0.07	AR
AU24	Sbc	5.09	6.55	52 ± 7	72 ± 7	0.73 ± 0.06	HIAR
AU25	SBb	4.41	3.14	41 ± 7	57 ± 9	0.74 ± 0.07	SAR
AU26	SBa	5.43	10.97	87 ± 12	115 ± 6	0.76 ± 0.10	AR
AU27	SBbc	5.77	9.61	68 ± 8	85 ± 7	0.81 ± 0.07	HIAR
AU28	SBa	7.46	10.45	98 ± 13	116 ± 13	0.87 ± 0.06	AR

The columns are: (1) Galaxy name, (2) Hubble-Type, (3) Radius where the disc starts to dominate, (4) Stellar mass, (5) Vertical velocity dispersion, (6) Radial velocity dispersion, (7) Vertical to radial velocity dispersion ratio, and (8) SVE categories from Section 4.1.

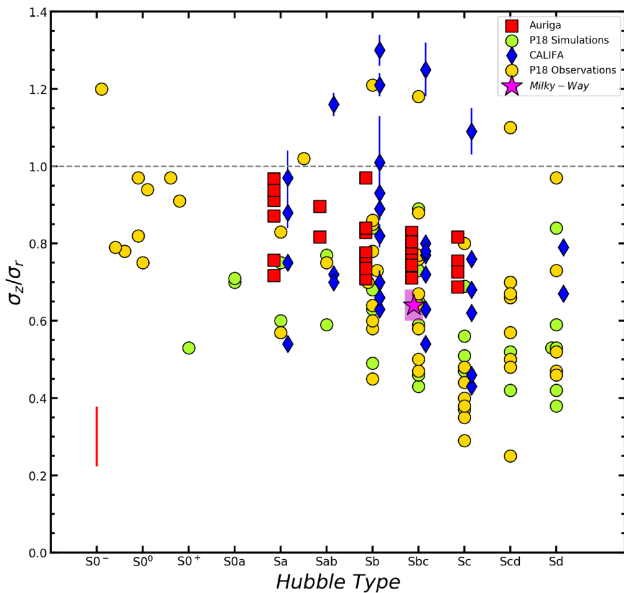


Figure 1. Ratio of vertical to radial velocity dispersion as a functions of Hubble type. Yellow and light green circles represent the observed and simulated galaxies from P18. In blue, diamonds and error bars of galaxies in the CALIFA survey from Mogotsi & Romeo (2019). Red squares indicate the median value of Auriga galaxies and the mean dispersion ($84^{\text{th}}-16^{\text{th}}$) in the sample is shown at the bottom left-hand part of the diagram. The magenta star and shadowed region represent the Milky-Way average value and dispersion from Mackereth et al. (2019). The horizontal dashed line indicates the shape of an isotropic ellipsoid ($\sigma_z = \sigma_r$).

In a similar way, CALIFA galaxies do not exhibit any correlation with the SVE axial ratio and the Hubble type, with Spearman correlation coefficient of -0.27 and p -value of 14 per cent). This result is particularly relevant because the sample from Mogotsi & Romeo (2019) represents one of the largest data sets analysed in an homogeneous way. Furthermore, it is an additional way to confirm that the combination of results from different methodologies in P18 observational data was not the main driver for the conclusions obtained. Both observational data sets reveal that, Auriga galaxies lack oblate ellipsoids with values between 0.4–0.6 and prolate ellipsoids with $\sigma_z/\sigma_r > 1$ at all morphologies. Interestingly, if we combine all the data sets, we obtain a moderate correlation with Spearman coefficient of -0.45 and a p -value equal to $1.4 \cdot 10^6$ s, which differs from the strong correlation from Gerssen & Shapiro Griffin (2012) with Spearman coefficient of -0.95 and p -value of 0.02 per cent.

In summary, future works on the analysis of large cosmological volume simulations such as EAGLE (Schaye et al. 2015) or IllustrisTNG (Pillepich et al. 2018) are necessary to properly understand the connection between the morphology of galaxies and the axial ratio of their SVE. Nevertheless, both simulations and observations agree that this connection is much weaker than previously stated.

4 SVE ACROSS THE DISC

4.1 2D distributions

Auriga galaxies have very similar global σ_z/σ_r with an average value around 0.8 but it is not clear if this value is a good proxy of the SVE axial ratio at a local scale or on the contrary, if it is

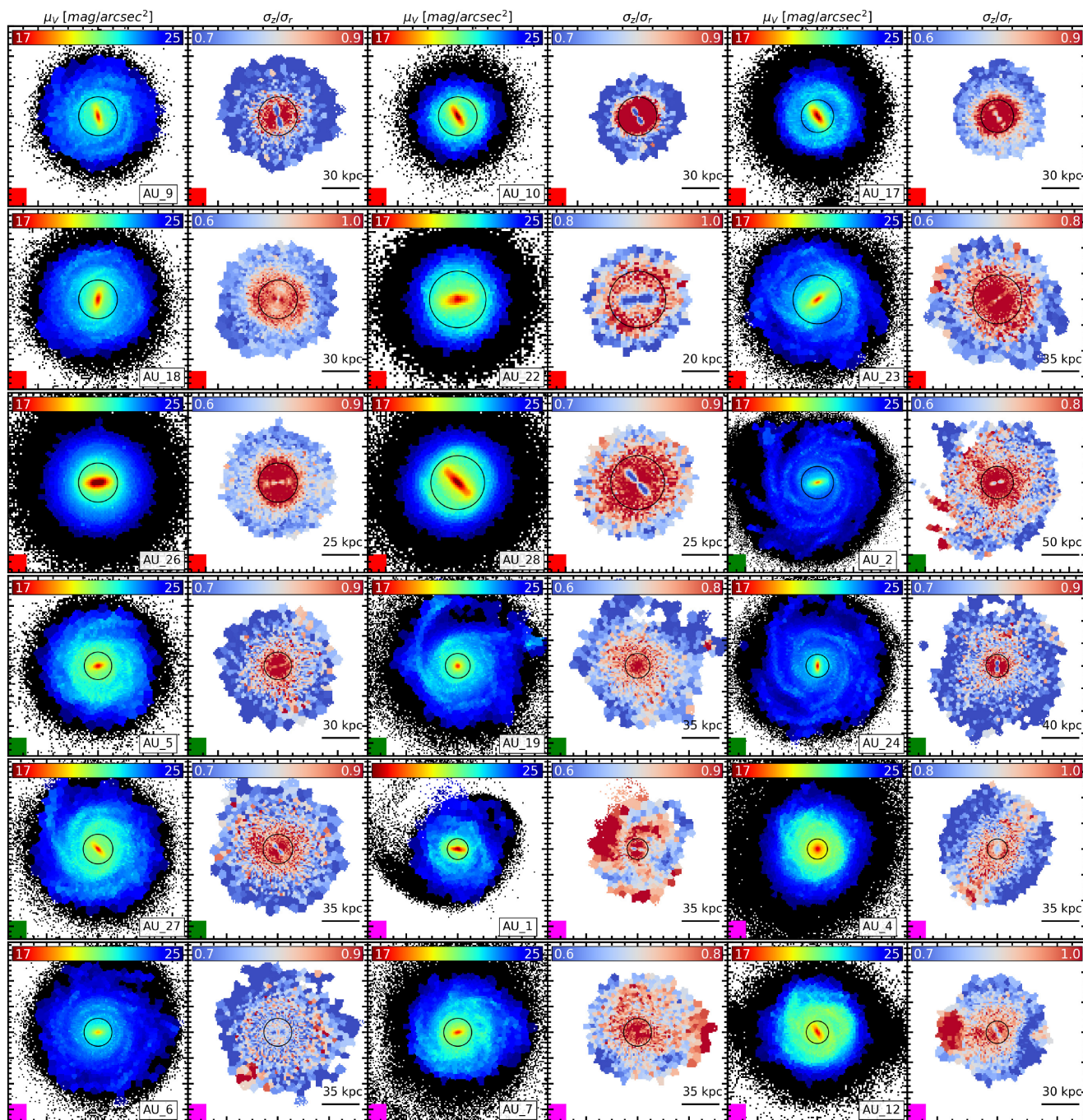


Figure 2. V -band surface brightness (left-hand panel) and σ_z/σ_r maps (right-hand panel) for each of the galaxies in the Auriga sample. In the left-hand panel, the bottom right-hand box shows the galaxy name and the colour scale ranges from 17 to 25 mag arcsec⁻². Black bins indicate the regions with surface brightness $\mu_V > 25$. In the right panels, the colour scale ranges between the 10th and 90th percentile of values in the disc region, and the box size is indicated in the bottom right-hand part of the panel. Black circles represent the beginning of the disc region. Coloured boxes in the bottom left-hand corner of each panel indicate the σ_z/σ_r category: AR (red), AIR (green), PR (magenta), SA (cyan), and HIAR (yellow).

just the result of combining high and low σ_z/σ_r regions. In this section, we explore how the SVE is distributed across the disc of the galaxies.

In Figs 2 and 3, we plot for each galaxy a pair of maps: the V -band surface brightness, μ_V , in the left-hand panel and the σ_z/σ_r map in the right-hand panel. This is the first attempt in the literature to study the 2D spatial variations of the SVE. The colour scale on the left-hand panel ranges from 17–25 mag arcsec⁻² and bins with larger

values are shown in black to identify tidal features in the outskirts of the galaxies. On the right-hand panels, we only show the σ_z/σ_r value for bins with $\mu_V < 25$ mag arcsec⁻². Smaller galaxies present smoother light distributions while larger galaxies exhibit features such as flocculent and grand design spiral arms. We first notice that there is not a simple and unique distribution of σ_z/σ_r ratios across the disc and therefore, the global shape of the ellipsoid is not a good indicator of its spatial distribution.

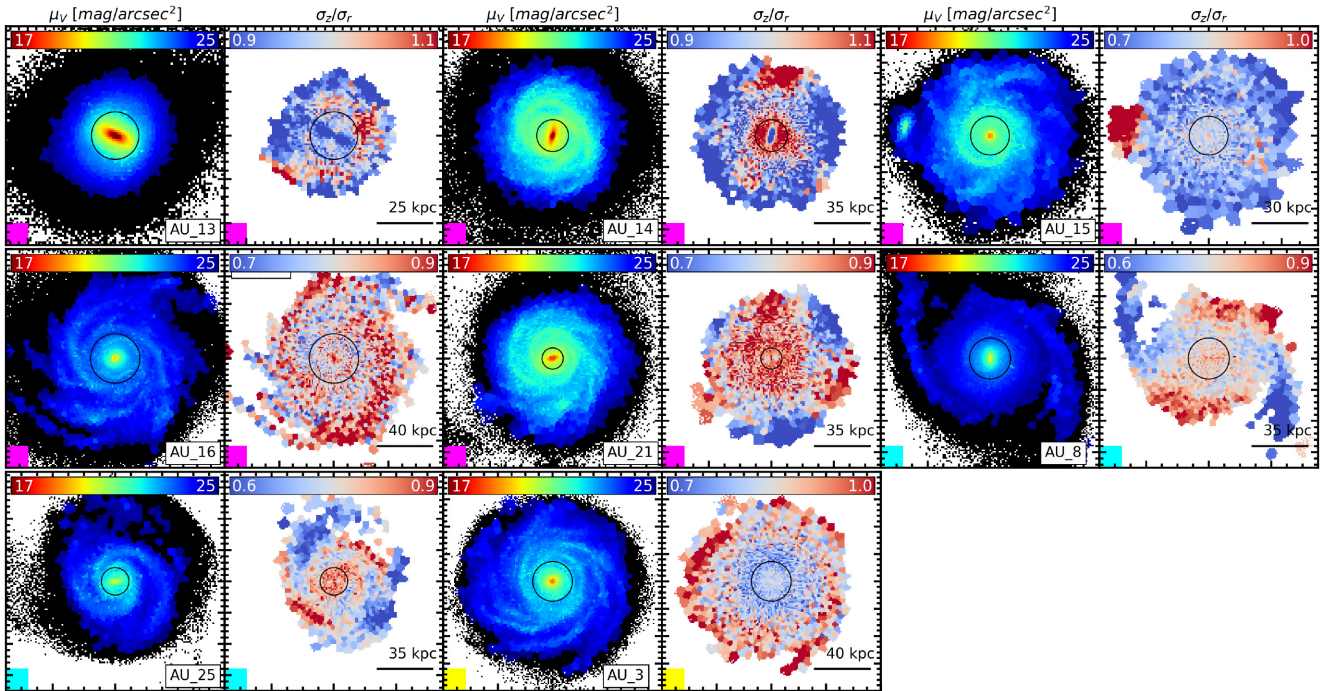


Figure 3. Same as Fig. 2 for the rest of galaxies in the Auriga sample.

We have visually divided our sample in six different categories in terms of the σ_z/σ_r spatial distribution in the disc dominated region. Although this classification scheme might seem arbitrary, it is not our intention to state that late-type galaxies should be classified into these categories, but rather emphasize the common features that we find among galaxies in the same group.

4.1.1 Axisymmetric ratios (AR)

The first group (red colour) is formed by galaxies with the most axisymmetric σ_z/σ_r distributions in the disc region. These systems present a clear transition from high σ_z/σ_r values in the inner parts to lower values in the disc region. All the members of this group are barred galaxies, which might suggest that the bar plays a stabilizing role in the disc dynamics. In fact, we find that the high to low σ_z/σ_r values transition occurs approximately at the length of the bar. None the less, we note that our sample is biased towards barred galaxies and we can not discard that this kind of distributions can also be obtained in unbarred systems. In this category, we find AU_9, AU_10, AU_17, AU_18, AU_22, AU_23, AU_26, and AU_28.

4.1.2 High inner axisymmetric ratios (HIAR)

The members of the second group (green colour) are galaxies with similar characteristics to those in the AR group (red colour), with higher values of σ_z/σ_r in the inner parts than in the outer disc and reasonable levels of axisymmetry. However, the transition region is not so well defined i.e. the inner high σ_z/σ_r regions expand beyond the length of the bar and the discs are less homogeneous with certain level of high σ_z/σ_r substructures. The former characteristics are best represented by the unbarred galaxy AU_19, where the high σ_z/σ_r region expands up to twice the scale length of the discs, which might, again, reflect the stabilizing role of the bar. In this category, we also find AU_2, AU_5, AU_24, and AU_27.

4.1.3 Perturbed ratio (PR)

Following the previous two classifications from more to less homogeneous and axisymmetric σ_z/σ_r distributions, the third group (magenta colour) contains galaxies that present either high σ_z/σ_r features embedded in regular discs or entirely disturbed non-axisymmetric distributions. The former group is best represented by AU_7, AU_14, and AU_15, where we see a rather regular σ_z/σ_r distribution in the disc region except for high value features in the outskirts. In the case of AU_15, it is clear that this feature is caused by the nearby satellite, while for the others, interestingly, it does not seem to be a similar counterpart in the surface brightness maps. The rest of the galaxies, AU_1, AU_4, AU_6, AU_12, AU_13, AU_16, and AU_21, present different levels of complexity in their σ_z/σ_r 2D maps and no special features in their surface brightness distribution. None the less, we find some cases where the low surface brightness regions ($\mu_V > 25 \text{ mag arcsec}^{-2}$) present features that indicate that these systems are not in hydrostatic equilibrium, e.g. AU_1 presents tidal features and AU_4 exhibits an extended low surface brightness halo.

4.1.4 Spiral arm (SA)

The next group (cyan colour) is formed by two galaxies, AU_25 and AU_8, that exhibit two symmetric spiral arms in the surface brightness maps with a clear imprint in the σ_z/σ_r maps. We notice that even though in the Auriga sample, there are more galaxies with visible spiral arms (e.g. AU_2 and AU_16) typically they do not exhibit a clear σ_z/σ_r counterpart in the right-hand panels. The panels with the cyan colour show a shared decrease σ_z/σ_r trend along the arm that indicates that the dynamical state of the stars is not the same within the spiral structure. The spiral arms of AU_8 are particularly interesting because they exhibit the maximum σ_z/σ_r values in the inner parts of the arm and not in the central parts of the galaxy. The low surface brightness region of the galaxy shows that the arms are

the most luminous part of a perturbed region. We will come back to this point in Section 5.

4.1.5 Inverted axisymmetric ratio (IAR)

The last group (yellow colour) is formed by AU_3, the only galaxy that presents an inverted pattern with lower values of σ_z/σ_r in the inner parts and larger values in the outskirts. We notice that the galaxy presents an axisymmetric distribution but the peculiarity of this spatial distribution motivates its analysis as an independent group from the AR one.

We have additionally confirmed that there is no connection between the global σ_z/σ_r and the Hubble type for the AR, HIAR, and PR categories by colour coding each Auriga galaxy in Fig. 1 by their σ_z/σ_r classification (not shown). The plots for each of the groups showed that there is not dependence of σ_z/σ_r with the Hubble type of the galaxies, in a similar way to the full Auriga sample. Even though our classification in different groups is not physically motivated beyond the visual similitudes in the σ_z/σ_r maps, it is still relevant to remark that we obtain similar results within each subsample.

These results combined clearly expose that the global σ_z/σ_r of a galaxy is not a good indicator of the velocity structure in the disc because multiple spatial distributions of the SVE are compatible with the same global σ_z/σ_r . In fact, similar values do not only encompass galaxies with different radial trends but also systems with entirely perturbed patterns. This further indicates that the global ratio of the SVE is not a good indicator of the dynamical evolution of the galaxy.

4.2 Radial profiles

Disturbed SVE patterns are a good indicator of galaxies that are not in hydrostatic equilibrium. Fly-by interactions and the accretion of satellites are expected to affect the disc unevenly, leading to different features in the σ_z/σ_r maps. On the contrary, the more regular σ_z/σ_r maps only indicate that the relation between the vertical and radial velocity dispersions is uniform across the disc, but is unclear whether they present similar spatial distributions of the individual components or different trends lead to the same σ_z/σ_r .

We now study in more detail the spatial variations of the individual SVE components, i.e. σ_z and σ_r , to understand if galaxies with common 2D σ_z/σ_r maps also have similar velocity dispersions. To that aim, we obtain radial profiles of σ_z and σ_r , and the σ_z/σ_r ratio in 1.5-kpc width radial bins. We limit this analysis to the galaxies with the most axisymmetric σ_z/σ_r maps (e.g. the AR and IAR groups) to ensure that within each radial bin, we azimuthally average the regions with similar velocity structure. For example, the radial profile in the inner parts of barred galaxies do not capture the complex non-axisymmetric features caused by the bar (see low σ_z/σ_r features along the bar in the maps of Figs 2 and 3).

Fig. 4 shows the radial profiles of σ_z , σ_r , and σ_z/σ_r for the nine galaxies with the most axisymmetric distributions of σ_z/σ_r . Left and right vertical axis indicate the magnitude of the velocity dispersions and the SVE axial ratio, respectively. Green and red circles represent the vertical and horizontal velocity dispersions while the blue squares indicate the σ_z/σ_r values. Symbols and errorbars indicate the median, 16th and 84th percentile in each radial bin. The vertical line indicates the the beginning of the disc-dominated region.

The variety of σ_z and σ_r radial profiles clearly show that the axial ratio of the SVE is not sufficient to comprehend the kinematic structure of the disc. The different panels reveal that in general, the

individual velocity dispersions decrease outwards, but not always in an exponential way. Furthermore, in some cases, the velocity dispersions flatten at a certain radius or even reverse their pattern showing larger values outwards. Galaxies like AU_18 and AU_23 present a more complicated pattern with small increases in σ_r at the position of the spiral arms seen in the surface brightness maps of Fig. 2 around 13 and 10 kpc, respectively. This in good agreement with the results from Mogotsi & Romeo (2019), where the authors found that σ_r in late-type galaxies does not always decrease in an exponential manner. We notice none the less, that their analysis was limited to the inner parts within one effective radius and that in their methodology they assumed a constant σ_z/σ_r while we study the complete extension of the disc, and no assumptions on the axial ratio if the SVE is previously imposed. A more in-depth analysis of the SVE profile of AR galaxies provides more information. First, we find that in general the SVE is more isotropic in the central parts than in the disc even though there are clear low σ_z/σ_r features along the bar in Fig. 2 maps. Secondly, the disc dominated regions present a steadily decreasing σ_z/σ_r radial profile. In addition, σ_z and σ_r show that this common behaviour of the SVE ratio is obtained through different combinations of σ_z and σ_r . In particular, decreasing σ_z/σ_r profiles might be obtained by (i) flat σ_z and an increasing σ_r profile e.g. AU_10 and AU_22, or (ii) flat σ_z and a decreasing σ_r profiles e.g. AU_17. Lastly, some galaxies present almost constant σ_z/σ_r in the outskirts of the disc, as in the case of AU_26 and AU_28. The cause of this behaviour is that both the vertical and horizontal components become constant at certain radius which is the only way to obtain constant σ_z/σ_r in our sample.

AU_3 is a galaxy with an atypical σ_z/σ_r distribution in both the inner and outer parts, in contrast to the rest of the axisymmetric galaxies. The central region shows a flat profile, which already indicates that σ_z and σ_r present the same radial dependency, while the disc exhibits an increasing tendency in σ_z/σ_r outwards. This unusual behaviour could be interpreted as an increasing σ_z trend caused by some dynamical heating event. However, the radial profiles of the vertical and radial components reveal that the axial ratio profile is due to a flattening of σ_z at shorter radius than σ_r .

To summarize, these results show that in general, σ_z/σ_r is not constant within the disc region due to the complex combination of σ_z and σ_r spatial distributions, except in the particular cases where both velocity dispersions have flattened. Our findings highlight the necessity of developing more elaborate models beyond the typically assumed exponential velocity dispersions and constant σ_z/σ_r to properly understand the dynamical state of real galaxies. For example, in Gerssen & Shapiro Griffin (2012), it is assumed that σ_z and σ_r have an exponential behaviour with the same scale length and hence, the results can only provide a single σ_z/σ_r value for the entire disc. Nevertheless, there are a few works in the literature that have found that the σ_z/σ_r varies around 20 per cent within one effective radius in fast-rotating early-type galaxies e.g. Cappellari et al. (2008) and Krajnović et al. (2018).

5 SVE EVOLUTION

Our results so far point to a scenario where galaxies have similar global values of σ_z/σ_r with no dependency on how this parameter is locally distributed or their morphology. This already illustrates the limited capability of this parameter to distinguish between different evolutionary scenarios. In addition, similar σ_z/σ_r distributions can be obtained through different combinations of σ_z and σ_r , increasing the level of complexity when inferring the dynamic evolution of galaxies from this parameter alone. In this section, we study the evolution of

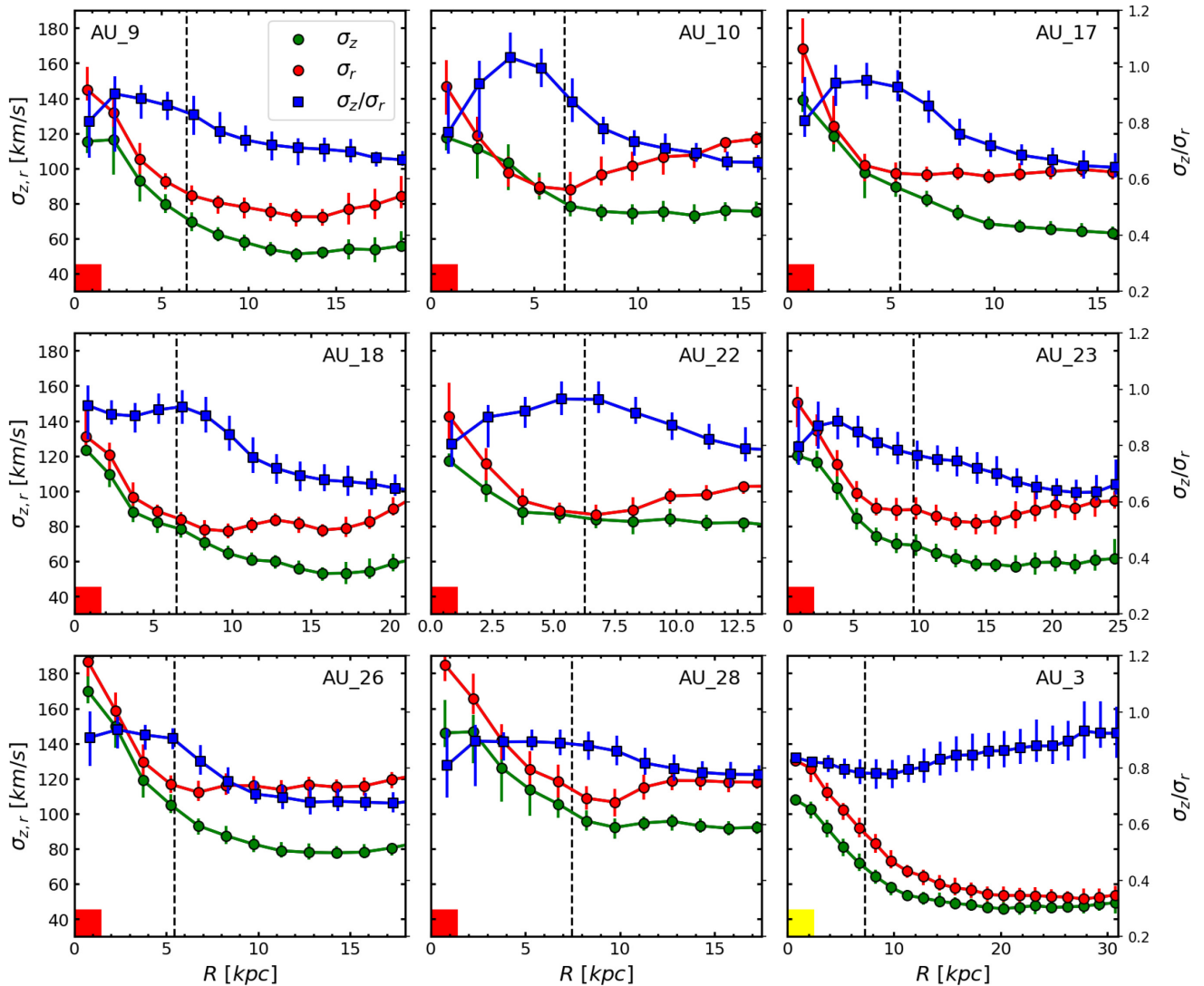


Figure 4. Radial profiles of σ_z (green circles), σ_r (red circles), and σ_z/σ_r (blue squares) in 2 kpc bins for galaxies with axisymmetric σ_z/σ_r distributions. The left and right vertical axis indicate the magnitude of the velocity dispersions and the axial ratio, respectively. Symbols and errorbars represent the median, 16th and 84th value within each radial bin. The vertical dashed lines indicate the radius where the disc starts to dominate.

the SVE at both global and local levels to understand the role of different agents and up to what extent the SVE parameters preserve any information about them at $z = 0$.

Fig. 5 shows the SVE evolution from $z = 2$ of two galaxies with entirely different dynamical histories, AU_23 (top) and AU_7 (bottom). We use the same disc dominated physical region in different snapshots based on the $z = 0$ photometric analysis. In the upper panel, AU_23 evolves in a relatively isolated way with no significantly strong SVE variations for most of the time. In the time period between $z = 2$ and 1, both σ_z and σ_r increase due to the accretion of two minor satellites and a larger merger soon after. These interactions do not equally affect both components, which leads to a maximum of σ_z/σ_r around 1.15 at $z = 1.75$. Then, a rapid drop to 0.7 is caused by the last merger of the series which increases σ_r significantly. Then, after $z = 1.5$, both velocity dispersions components decrease at similar rates, and hence the shape of the global SVE remains almost constant. The bottom panel shows a more complicated picture for AU_7, where the galaxy experiences multiple episodes of heating caused by fly-by interactions and merger that have severely modified the global SVE

at different times. It is particularly interesting to find that mergers do not always lead to more isotropic SVEs. For example, the last merger increases σ_r to a greater extent than σ_z , decreasing σ_z/σ_r even during a heating process. On the other hand, it is remarkable that every heating event is followed by a cooling period of time where the global vertical and radial velocity dispersions decrease.

This ‘cooling’ process is caused by the formation of stars in colder orbits which dominate the evolution of the global ellipsoid and should not be interpreted as a cooling episode of the pre-existing populations. The decrease of the velocity dispersion of the gas over cosmic time has been confirmed by both observations (Förster Schreiber et al. 2009; Green et al. 2014; Wisnioski et al. 2015) and cosmological simulations (Grand et al. 2017; Pillepich et al. 2019) and, thus, our result is expected. None the less, it is remarkable that this effect is able to compensate for the heating caused by secular and external processes. For example, Grand et al. (2016a) showed by analysing the evolution of a coeval population that the bar is one of the main source of heating of pre-existing populations after it is formed. Here, we show that the combination of all stellar

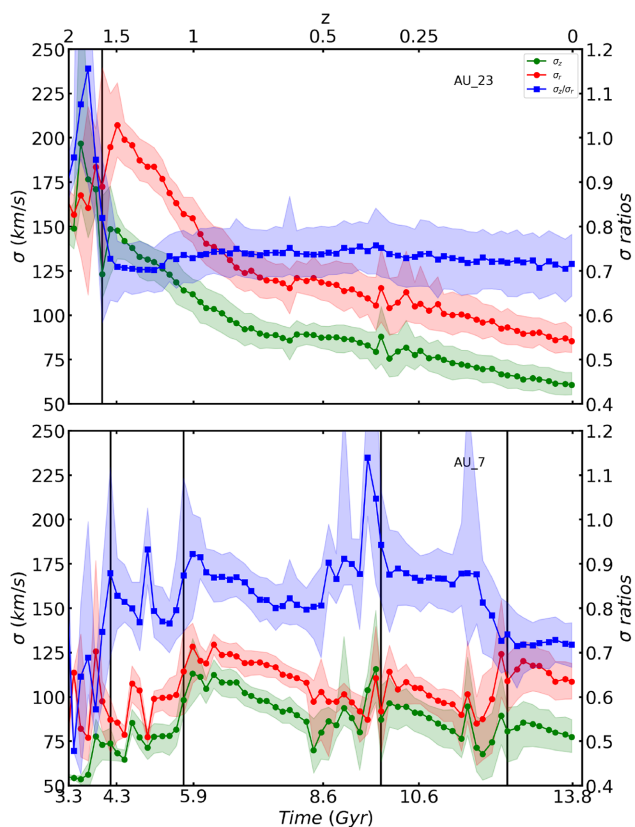


Figure 5. Evolution of σ_z (green circles), σ_r (red circles), and σ_z/σ_r (blue squares) as function of time since the big bang (bottom axis) and redshift (upper axis). From top to bottom, we see the evolution of AU_23, an isolated galaxy with no strong interaction and AU_7, a galaxy that experiences multiple mergers. The left- and right-hand vertical axis indicate the magnitude of the velocity dispersions and σ_z/σ_r , respectively. Symbols and the dashed area represent the median, 16th and 84th value of each parameter in the disc region. Vertical lines indicate mergers with mass ratio larger than 1:10.

populations lead to a steady decrease of the global SVE velocity dispersion.

The rest of the Auriga sample shows an intermediate behaviour between the two extreme cases in Fig. 5. Galaxies combine secular evolution periods of time with varying number of heating events from mergers depending on the specific conditions of each system. When galaxies undergo one of these quiescent episodes σ_z and σ_r might decrease at different rates, leading to increasing or decreasing σ_z/σ_r global values over time. These results are in excellent agreement with P18 which also revealed that the combination of heating and cooling mechanisms made it difficult to determine what processes had galaxies experienced (see Section 5.3 of their work for a detailed study on the effect of different agents in the evolution of the SVE).

Our methodology allows us to further study how the spatial distribution of the SVE changes over time. In particular, we investigate if the SVE radial trends are similar at all times while the global SVE evolves secularly. In Fig. 6, we show, from left- to right-hand panel, the radial profiles of σ_z , σ_r , and σ_z/σ_r at $z = 0$ (blue), $z = 0.5$ (green), and $z = 1$ (red) for AU_23 (top) and AU_18 (bottom). The latter galaxy has a dynamical history similar to AU_23, evolving in isolation after a merger at $z \approx 1.25$. However, from $z = 0.5$, σ_z cools at a faster rate than σ_r which leads to a slightly decreasing σ_z/σ_r trend in the last 5 Gyr compared to the flat tendency of AU_23 in Fig. 5.

The radial profiles on the left-hand and middle panels show larger values of σ_z and σ_r in the disc region at earlier times, as expected from their global SVE evolutions. This is also true for some of the central regions except for the innermost parts where the velocity dispersions are very similar for the three curves. These plots show that the radial behaviour of σ_z and σ_r is not constant over time, which further reveals that galaxies evolve in a more complicated manner than simply decreasing their global velocity dispersion since. Moreover, each component might evolve differently. For instance, we find that AU_23 and AU_18 experience more changes in σ_r and σ_z profiles, respectively.

We find that σ_z/σ_r radial profiles evolve in entirely different fashions for each galaxy even though they shared some similarities in the evolution of σ_z and σ_r . AU_23 shows almost the same radial distribution of σ_z/σ_r at different snapshots which reveals that heating and cooling agents modify σ_z and σ_r in a uniform way. On the contrary, AU_18 presents larger values and smoother profile at $z = 0.5$ and an increasing profile at $z = 1$. The latter is clearly caused by the merger at $z = 1.25$ as we can already infer from the increasing σ_z profile. The large errorbars, indicating the scatter of averaged points at different azimuths, show that the interaction does not homogeneously affect the disc. A more detailed study of the mechanisms driving the evolution of the SVE at a local level for different galaxies exceeds the scope of this paper and will be addressed in future works. We remark, none the less, that present day axisymmetric σ_z/σ_r can be obtained through different processes.

We also study the evolution in time of the full 2D maps to investigate the origin of some of the features shown in Section 4.1 that would otherwise be neglected in the radial profile. Fig. 7 shows the V-band surface brightness, μ_V and σ_z/σ_r maps for two galaxies AU_14 (top) and AU_25 (bottom) at different snapshots at recent times (in a similar way to Fig. 2). From left- to right-hand, the panels show the galaxies in three different snapshots, 1 Gyr ago, 0.5 Gyr ago, and at present time. The global SVE parameters for these two galaxies follow a quiescent evolution that do not justify the formation of the σ_z/σ_r features seen in the maps.

In the top panels, we observe how the accretion of a low mass satellite, (1:30 mass ratio), induces the high σ_z/σ_r features in the $z = 0$ map of AU_14. In the left-hand panel, the satellite is in the outskirts of the disc before it is finally accreted, leaving no trace of this event in the surface brightness map. This interaction increases the vertical velocity dispersion which causes the high σ_z/σ_r feature. The results are particularly relevant because they point to the possibility of using these maps to unveil the accretion of low mass satellites in future observations.

AU_25 presents a different picture with very different maps both in the surface brightness and σ_z/σ_r in the three snapshots. The dramatic change from $z = 0.1$ to 0 is caused by the interaction with a massive satellite with mass ratio 1:3. In the left-hand panel, we can see how the companion is approaching AU_25. In the next panel, the apocentric passage of the satellite has induced the formation of two large symmetrical spiral arms that are also present in the σ_z/σ_r map. In the third panel, we observe that the effect of the fly-by is still present in both maps at present time.

The second galaxy with spiral patterns in the surface brightness and σ_z/σ_r maps, AU_8, reveals a similar story. The galaxy presents a regular disc structure that is slowly setting into equilibrium after a minor merger 3.5 Gyr ago. Then, a fly-by interaction 0.7 Gyrs ago caused the formation of two symmetric spirals arms at $z = 0$ (see Fig. 3). After a thorough inspections of our sample, we find that other galaxies have exhibit similar features but their signatures have disappeared. The reason why these patterns are present at $z = 0$ is

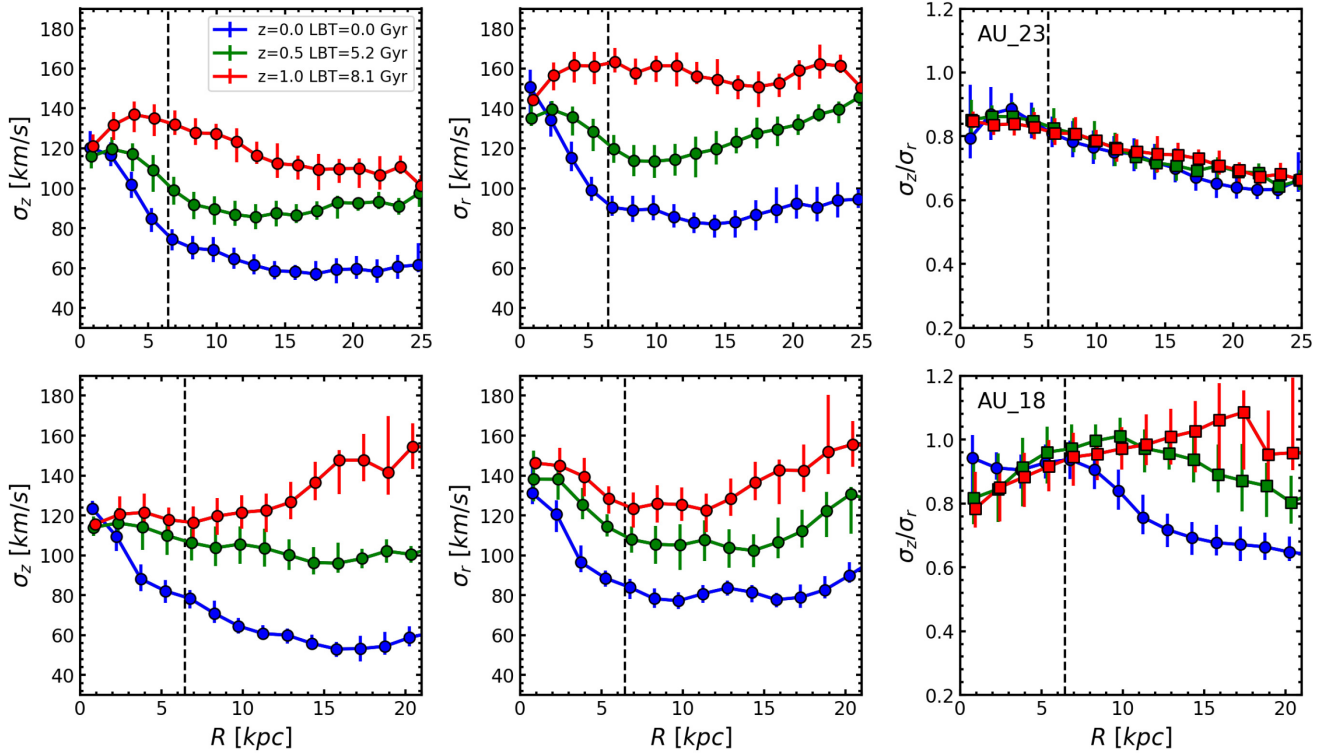


Figure 6. Radial profiles of σ_z (left-hand panel), σ_r (centre), and σ_z/σ_r (right-hand panel) at $z = 0$ (blue), $z = 0.5$ (green), and $z = 1$ (red) for Au.23 (top) and AU.18 (bottom). Symbols and errorbars represent the median, 16th and 84th value within each radial bin. The dashed vertical line represents the $z = 0$ beginning of the disc dominated region.

because they have recently occurred and galaxies have not been able to reach equilibrium.

In summary, the most interesting aspect of these interactions is that even though they do not affect the global SVE parameters, they may leave clear imprints in the SVE local distribution.

6 THE EFFECT OF STELLAR POPULATIONS ON THE SVE

Our work provides valuable insights from the theoretical point of view because the number of studies in the literature focused on the detailed analysis of the SVE is small. However, our methodology does not take into account observational selection effects. In particular, our analysis of the SVE is based on mass weighted quantities which is relevant as these parameters are more directly connected with the dynamic of the stars.

It is expected that the SVE varies for different stellar populations since mergers take place at different times and the interstellar medium from which stars are formed steadily cools down. Nevertheless, it is unclear if the variations in the mass to light ratio for different populations might cause that the observational (and thus luminosity weighted) SVE deviates significantly from the mass weighted one. To account for this effect, we have repeated our analysis weighting the contribution of each stellar particle to the SVE by their V -band luminosity. The spatial distribution of the three SVE parameters is very similar to the mass weighted but experience a 20 per cent decrease in σ_z and σ_r while σ_z/σ_r is of the same order.

The previous results show up to what extent young populations affect the luminosity weighted SVE when all the stellar particles are considered. However, the extent to which the global and local SVE agree with one another for different stellar populations is unclear.

To answer this question, we focus on a group of young (<3 Gyr) and old (>9 Gyr) stars and study their SVE within the same spatial bins that we have used through this work. We notice that the SVE of young stars would be best described by a shorter age window since certain interaction induce rapid changes in less than 1 Gyr, but this limit ensures that we still have a statistically significant number of particles in each bin.

We first found that the global σ_z and σ_r of the young and old components are on average 50 percent cooler and hotter than the standard global SVE, which is in agreement with the global evolution results and the works previously mentioned (e.g. Grand et al. 2017; Pillepich et al. 2019). On the other hand, σ_z/σ_r results are more complicated. Fig. 8 shows the global σ_z/σ_r of the young (blue) and old (red) SVE as a function of the standard SVE axial ratio. Lines in the bottom right-hand represent the average σ_z/σ_r scatter across the disc in our sample for each type of SVE, e.g. 0.3 young (vertical blue), 0.2 old (vertical red), and 0.15 standard (horizontal black). The dashed line indicates the one-to-one correlation. The panel shows that the young populations present a more oblate ellipsoid, whereas the old population presents an ellipsoid similar to the standard SVE. This difference is in good agreement with the results for the Milky Way from Mackereth et al. (2019), where the authors found in the 6–10 kpc region of the disc that young and old populations exhibited σ_z/σ_r values ≈ 0.4 and ≈ 0.6 , respectively.

Following the structure from previous sections, we study in Fig. 9 how the spatial distribution of the ellipsoid changes for different populations. From left- to right-hand, we show the V -band surface brightness and the σ_z/σ_r of the standard, young, and old SVEs of AU.2 (top) and AU.10 (bottom). We first notice that the differences on the global values of σ_z/σ_r for different populations from Fig. 9 do not always correspond to global differences across the disc. The

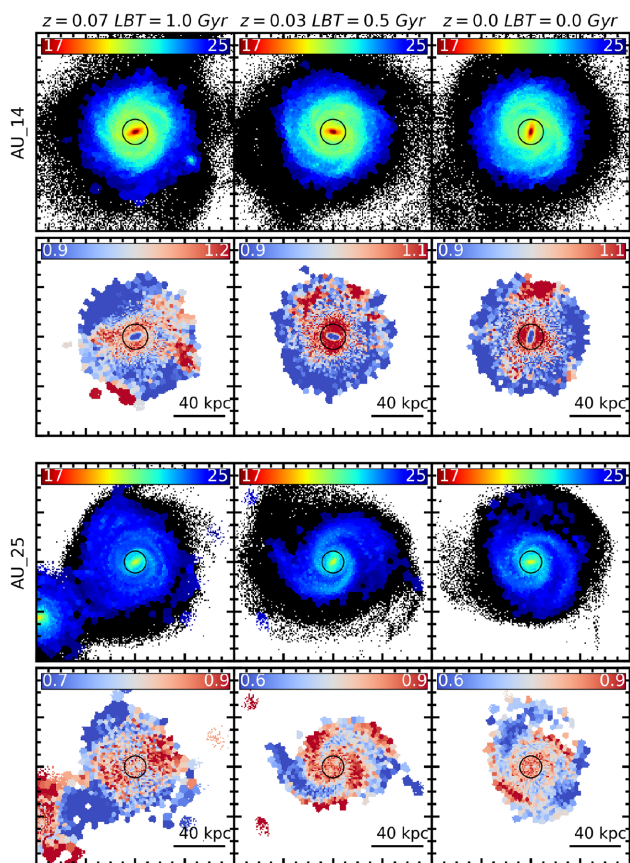


Figure 7. V-band surface brightness (upper maps) and σ_z/σ_r maps (inferior maps) for AU_14 (top panels), AU_25 (bottom panels) at three different snapshots. Surface brightness colorscale ranges from 17 to 25 mag/arcsec² and bins with larger values are shown in black. Redshift and look-back time (LBT) are indicated on top. The box size of the field of view is indicated in the bottom right part of the panel. Black circles represent the beginning of the disc region.

third and fourth column clearly illustrate how the spatial distribution of the SVE changes for different populations.

In the top panels, AU_2 shows that galaxies may present different 2D distributions depending on the population that is studied. The spiral-like features in the third panel are particularly important because they reveal that spiral arms have an impact in the SVE of the young population even though the standard SVE presents a more regular pattern. On the other hand, old populations have a smoother and more axisymmetric σ_z/σ_r distribution than the standard SVE. The panels motivate a more in-depth analysis on the spiral imprints in the SVE maps for different populations. To this end, we studied the difference between the standard, young, and old SVE parameters in the arm region (traced by the bins with high star formation rate) and the underlying stellar disc. However, the results did not exhibit any significant difference between them. The reason for this outcome is that there is not a perfect match between the spiral features in the surface brightness and σ_z/σ_r maps causing that SVE features are shared between the arm and inter-arm photometric regions. This trend is consistent with streaming motions indicative of radial migration along spiral arms (Sánchez-Menguiano et al. 2016; Grand et al. 2016b), and emphasizes the complex impact of spiral arms in the dynamics of the disc. The bottom panels show an opposite picture, where the σ_z/σ_r spatial distribution of AU_10 is very similar for the

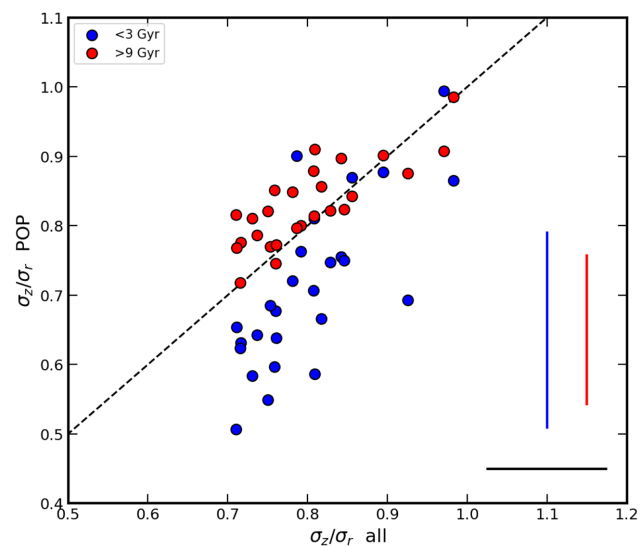


Figure 8. Axis ratio of the SVE, σ_z/σ_r , for a stellar population as a function of the axial ratio obtained for all the stellar particles. Blue and red circles are used for the young (<3 Gyr) and old (>9 Gyr) populations comparisons. Vertical and horizontal lines at the bottom left-hand part of the panel indicate the mean dispersion (84th–16th) in each data set.

different stellar populations. The only small difference is that there are more region of the disc with higher σ_z/σ_r values.

We want to remark that AU_2 and AU_10 are two interesting cases in our sample but they should not be interpreted as the only two possible scenarios in which the SVE maps change. Auriga galaxies show a complex SVE-stellar population dependence that significantly changes from galaxy to galaxy depending on their dynamical history. However, the detailed characterization of the SVE for different populations and their evolution is beyond the scope of this work. None the less, these results show that the SVE properties for different populations is a promising tool for unveiling the formation mechanisms of galaxies.

Finally, we note that stars can only be resolved in a handful of galaxies in the nearby volume, hence our results may not be easy to confirm from an observational point of view. However, the latest advance in dynamical models such as the orbit-based Schwarzschild method (van den Bosch et al. 2008; van de Ven, de Zeeuw & van den Bosch 2008; Vasiliev & Valluri 2020) allows to infer the underlying orbital distribution of stars within a galaxy without any ad-hoc assumption. In particular, the latest population-orbit method by Zhu et al. (2020) is a promising technique that has successfully incorporated the age and metallicity information into the orbit decomposition. Thus, observational analysis similar to that presented here will be possible in the near future.

7 CONCLUSIONS

We have analysed a set of 26 high resolution cosmological zoom-in simulations of Milky-Way mass late-type galaxies from the Auriga sample and we have obtained maps of vertical and radial velocity dispersions and their ratio (e.g. σ_z , σ_r and σ_z/σ_r , respectively), to study the spatial variations of the Stellar Velocity Ellipsoid (SVE).

Following P18, the galaxies in our sample exhibit very similar σ_z/σ_r ratios and we do not find the connection with morphological type shown by Gerssen & Shapiro Griffin (2012). Auriga galaxies present more isotropic SVEs than P18 with a mean σ_z/σ_r value of

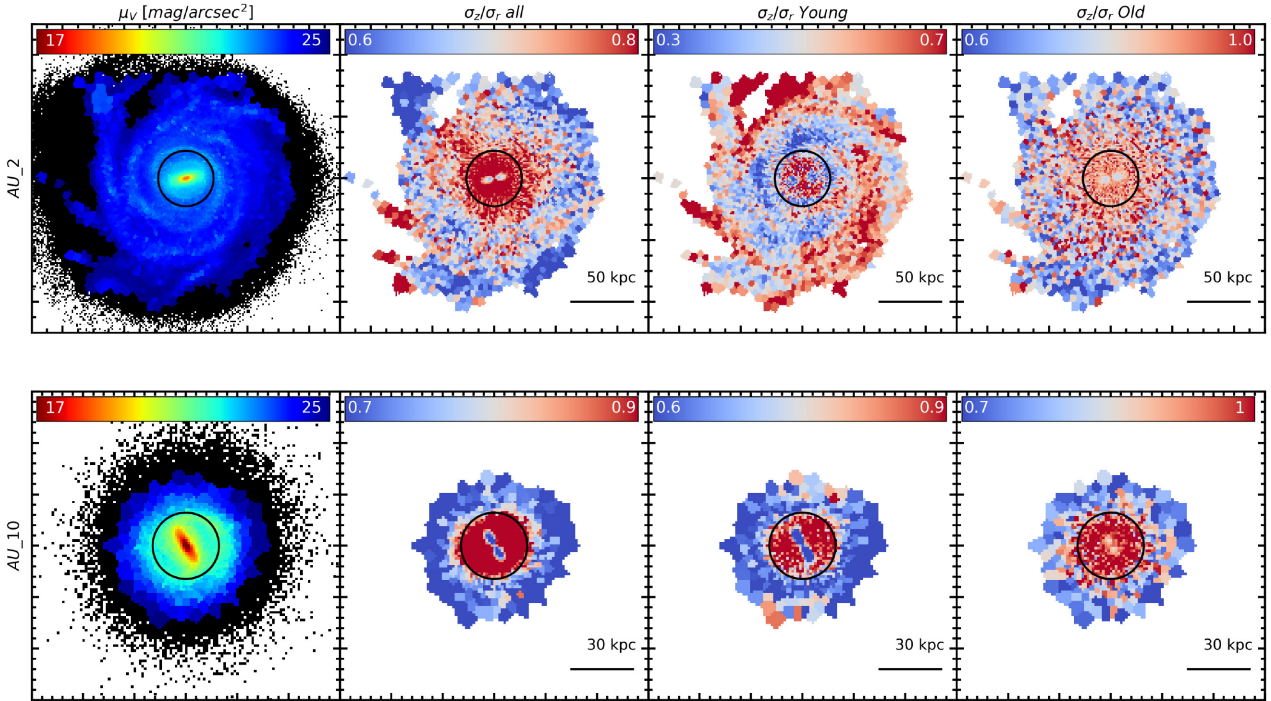


Figure 9. From left- to right-hand panel, we show the V -band surface brightness in the 17–25 mag arcsec $^{-2}$, σ_z/σ_r map of all the stellar particles, σ_z/σ_r map of stellar particles younger than 3 Gyr and σ_z/σ_r map of stellar particles older than 9 Gyr for AU_2 (top) and AU_10 (bottom). The upper left-hand box in the σ_z/σ_r maps show the colour scale range and the physical scale of the field of view is indicated in the bottom right-hand part of the panel. Black circles represent the beginning of the disc region.

0.80 ± 0.08 . We have also shown that this relation is not present in more recent observational studies using galaxies in the CALIFA survey.

Although galaxies present similar values of σ_z/σ_r , the 2D spatial distribution of the SVE reveals different behaviours. In general, galaxies exhibit decreasing σ_z/σ_r outwards, except for AU_3 which is the only case in our sample with an increasing σ_z/σ_r profile. The different levels of axisymmetry in the disc region motivated the classification of our galaxies into different categories from more to less homogeneous σ_z/σ_r distributions. Interestingly, we found that galaxies may present high σ_z/σ_r features in their map that are not associated with any visible feature in their surface brightness maps. On the other hand, our results show that even though many of the galaxies present spiral arms, only two of them exhibit clear features in their σ_z/σ_r maps. In these peculiar systems, the spiral arms are triggered by recent interactions.

We have analysed in more detail the radial variation of σ_z , σ_r and σ_z/σ_r of galaxies that presented the most axisymmetric σ_z/σ_r maps. In general, the vertical and radial velocity dispersions decrease outwards but, in some cases, these profiles flatten or even increase after reaching a minimum value. Radial profiles of σ_z/σ_r tend to decrease outwards but similar behaviours can be obtained with different combinations of σ_z and σ_r trends. In particular, we find that the combination of flat σ_z with increasing σ_r , and flat σ_r with decreasing σ_z lead to the declining σ_z/σ_r profile. On the other hand, if each component decreases differently the resulting radial σ_z/σ_r will exhibit either an increasing or decreasing σ_z/σ_r profile. This further emphasizes that the σ_z/σ_r parameter is not able to capture the complex kinematic structure of galaxies.

The time evolution of the global SVE shows that the global σ_z/σ_r is not useful to determine the dynamical evolution of the galaxy since

similar axial ratios can be obtained through different mechanisms. In the absence of mergers, the evolution of the global SVE is determined by the formation of stars in colder orbits which cause σ_z and σ_r to steadily decrease with time. Simultaneously, the SVE ratio reaches a steady value fairly early then does not evolve much. Although this gives the impression of quiescent evolution, the spatial distribution of σ_z and σ_r may vary over time and exhibits different radial trends. We find that, in some cases, the changes in the profiles of σ_z and σ_r take place in a similar way throughout the disc region, preserving the same σ_z/σ_r distribution at all times, or in a more complex way, leading to different radial profiles at earlier epochs.

Further, we have shown that the evolution of the full 2D spatial distribution can be used to unveil the origin of some of the features seen at the $z = 0$ maps. We found evidence that, in some cases, the local SVE of galaxies experience significant changes while the global SVE stays constant. For instance, we have found that recent fly-by interactions are able to generate two symmetric coherent spiral arms that leave a clear imprint in the σ_z/σ_r maps. This is in contrast with the patterns seen for galaxies in which the spirals are not driven by fly-bys. Further, we found that the accretion of low mass satellites leaves imprints in the σ_z/σ_r distributions that are not detected in the surface brightness maps.

Lastly, we found that the SVE properties vary for different stellar populations. In terms of the global SVE, σ_z and σ_r are respectively 50 percent lower and larger for the young and old populations compared to the velocity dispersion obtained with all the stellar particles. On the other hand, we showed that the global SVE of the young population is typically more oblate while the old population present similar σ_z/σ_r values to the standard SVE. Moreover, the spatial distribution of the SVE is not the same for different populations and, in particular, the young population

generally presents more complex patterns with spiral-like features in many of the galaxies. Future observations with new instruments like WEAVE (Dalton et al. 2018), an integral field unit (IFU) that combines high spatial (1.5 arcsec per pixel) and spectral resolution ($R \approx 20000$) will be able to examine these theoretical results.

In summary, our findings show that the global SVE of galaxies does not help to discriminate all the diverse mechanisms that affect the stars in the discs of galaxies. The spatial variations of the SVE are important because they can be used to reconstruct parts of the evolution history. The complexity of these results show the need of methods capable of revealing the local variations of the SVE in observations and simulations. Recently, Marchuk & Sotnikova (2017) have been able to use a non-parametric approach with variable σ_z/σ_r across the disc of spiral galaxies obtaining similar results with more isotropic SVE inwards ($\sigma_z/\sigma_r = 0.72$) than in the outer parts ($\sigma_z/\sigma_r = 0.30$) for NGC 1167. On the other hand, the improved Schwarzschild's orbit-superposition method from Zhu et al. (2020) which allows to deproject the kinematic information without assuming a constant mass-to-light ratio across the galaxy. Thus, it is obvious that future studies should work towards the joint analysis from the theoretical and observational point of view.

ACKNOWLEDGEMENTS

DW-M and JF-B acknowledge support through the RAVET project by the grant PID2019-107427GB-C32 from the Spanish Ministry of Science, Innovation and Universities (MCIU), and through the IAC project TRACES which is partially supported through the state budget and the regional budget of the Consejería de Economía, Industria, Comercio y Conocimiento of the Canary Islands Autonomous Community.

DATA AVAILABILITY

The data underlying this article will be shared on reasonable request to the corresponding author.

REFERENCES

Ann H. B., Park J. C., 2006, *New A*, 11, 293
 Bittner A., Gadotti D. A., Elmegreen B. G., Athanassoula E., Elmegreen D. M., Bosma A., Muñoz-Mateos J., 2020a, in Valluri M., Sellwood J. A., eds, Proc. IAU Symp. 353, Galactic Dynamics in the Era of Large Surveys. Kluwer, Dordrecht, p.140
 Bittner A. et al., 2020b, *A&A*, 643, A65
 Blázquez-Calero G. et al., 2020, *MNRAS*, 491, 1800
 Buck T., Obreja A., Macciò A. V., Minchev I., Dutton A. A., Ostriker J. P., 2020, *MNRAS*, 491, 3461
 Büdenbender A., van de Ven G., Watkins L. L., 2015, *MNRAS*, 452, 956
 Burstein D., 1979, *ApJ*, 234, 829
 Cappellari M., Copin Y., 2003, *MNRAS*, 342, 345
 Cappellari M. et al., 2007, *MNRAS*, 379, 418
 Cappellari M. et al., 2008, *MNRAS*, 245, 215
 Courteau S. et al., 2014, *Rev. Mod. Phys.*, 86, 47
 Dalton G. et al., 2018, in Evans C. J., Simard L., Takami H., eds, Proc. SPIE Conf. Ser. Vol. 10702, Ground-Based and Airborne Instrumentation for Astronomy VII. SPIE, Bellingham, p.107021B,
 Danver C.-G., 1942, *Ann. Obs. Lund*, 10, 115
 Davis M., Efstathiou G., Frenk C. S., White S. D. M., 1985, *ApJ*, 292, 371
 de Lorenzo-Cáceres A., Méndez-Abreu J., Thorne B., Costantin L., 2019, *MNRAS*, 484, 665
 Emsellem E., Dejonghe H., Bacon R., 1999, *MNRAS*, 303, 495
 Emsellem E. et al., 2011, *MNRAS*, 414, 888

Everall A., Evans N. W., Belokurov V., Schönrich R., 2019, *MNRAS*, 489, 910
 Falcon-Barroso J., Martig M., 2020, *A&A*, 646, 12
 Few J. M. A., Madore B. F., 1986, *MNRAS*, 222, 673
 Förster Schreiber N. M. et al., 2009, *ApJ*, 706, 1364
 Gadotti D. A. et al., 2020, *A&A*, 643, A14
 Gaia Collaboration et al., 2016, *A&A*, 595, A1
 Gargiulo I. D. et al., 2019, *MNRAS*, 489, 5742
 Gerssen J., Shapiro Griffin K., 2012, *MNRAS*, 423, 2726
 Gómez F. A., White S. D. M., Grand R. J. J., Marinacci F., Springel V., Pakmor R., 2017, *MNRAS*, 465, 3446
 Grand R. J. J., Springel V., Gómez F. A., Marinacci F., Pakmor R., Campbell D. J. R., Jenkins A., 2016a, *MNRAS*, 459, 199
 Grand R. J. J. et al., 2016b, *MNRAS*, 460, L94
 Grand R. J. J. et al., 2017, *MNRAS*, 467, 179
 Green A. W. et al., 2014, *MNRAS*, 437, 1070
 Hagen J. H. J., Helmi A., de Zeeuw P. T., Posti L., 2019, *A&A*, 629, A70
 Kalinova V. et al., 2017, *MNRAS*, 469, 2539
 Kipper R., Tenjes P., Tihhonova O., Tamm A., Tempel E., 2016, *MNRAS*, 460, 2720
 Kormendy J., Ho L. C., 2013, *ARA&A*, 51, 511
 Krajnović D. et al., 2018, *MNRAS*, 477, 3030
 Mackereth J. T. et al., 2019, *MNRAS*, 489, 176
 Majewski S. R. et al., 2017, *AJ*, 154, 94
 Marchuk A. A., Sotnikova N. Y., 2017, *MNRAS*, 465, 4956
 Marinacci F., Pakmor R., Springel V., 2014a, *MNRAS*, 437, 1750
 Marinacci F., Pakmor R., Springel V., Simpson C. M., 2014b, *MNRAS*, 442, 3745
 Martig M., Bournaud F., Croton D. J., Dekel A., Teyssier R., 2012, *ApJ*, 756, 26
 Martín-Navarro I. et al., 2012, *MNRAS*, 427, 1102
 Martínez-Valpuesta I., Aguerri J. A. L., González-García A. C., Dalla Vecchia C., Stringer M., 2017, *MNRAS*, 464, 1502
 Martinson T. P. K., Verheijen M. A. W., Westfall K. B., Bershady M. A., Schechtman-Rook A., Andersen D. R., Swaters R. A., 2013, *A&A*, 557, A130
 Mogotsi K. M., Romeo A. B., 2019, *MNRAS*, 489, 3797
 Pillepich A. et al., 2018, *MNRAS*, 473, 4077
 Pillepich A. et al., 2019, *MNRAS*, 490, 3196
 Pinna F., Falcón-Barroso J., Martig M., Martínez-Valpuesta I., Méndez-Abreu J., van de Ven G., Leaman R., Lyubenova M., 2018, *MNRAS*, 475, 2697 (P18)
 Pinna F. et al., 2019, *A&A*, 625, A95
 Planck Collaboration et al., 2014, *A&A*, 571, A16
 Pohlen M., Beckman J. E., Hüttemeister S., Knapen J. H., Erwin P., Dettmar R. J., 2004, *Stellar Disk Truncations: Where Do We Stand?* Springer, Netherlands, p. 713, doi:10.1007/978-1-4020-2862-5_61
 Reshetnikov V., Combes F., 1998, *A&A*, 337, 9
 Reshetnikov V. P., Mosenkov A. V., Moiseev A. V., Kotov S. S., Savchenko S. S., 2016, *MNRAS*, 461, 4233
 Rodionov S. A., Sotnikova N. Y., 2013, *MNRAS*, 434, 2373
 Rosado-Belza D. et al., 2020, *A&A*, 644, A116
 Sánchez S. F. et al., 2012, *A&A*, 538, A8
 Sánchez-Menguiano L. et al., 2016, *ApJ*, 830, L40
 Schaye J. et al., 2015, *MNRAS*, 446, 521
 Schulze F., Remus R.-S., Dolag K., Burkert A., Emsellem E., van de Ven G., 2018, *MNRAS*, 480, 4636
 Sellwood J. A., 2013, *ApJ*, 769, L24
 Shapiro K. L., Gerssen J., van der Marel R. P., 2003, *AJ*, 126, 2707
 Shlosman I., Frank J., Begelman M. C., 1989, *Nature*, 338, 45
 Simion I. T., Shen J., Kaposov S. E., Ness M., Freeman K., Bland-Hawthorn J., Lewis G. F., 2021, *MNRAS*, 502, 1740
 Soto M., Rich R. M., Kuijken K., 2007, *ApJ*, 665, L31
 Springel V., 2010, *ARA&A*, 48, 391
 Springel V., White S. D. M., Tormen G., Kauffmann G., 2001, *MNRAS*, 328, 726
 Springel V. et al., 2005, *Nature*, 435, 629
 Tempel E., Tenjes P., 2006, *MNRAS*, 371, 1269

- Toomre A., 1964, *ApJ*, 139, 1217
Tsikoudi V., 1979, *ApJ*, 234, 842
van de Sande J. et al., 2017, *ApJ*, 835, 104
van de Ven G., de Zeeuw P. T., van den Bosch R. C. E., 2008, *MNRAS*, 385, 614
van den Bosch R. C. E., van de Ven G., Verolme E. K., Cappellari M., de Zeeuw P. T., 2008, *MNRAS*, 385, 647
van der Kruit P. C., 1979, *A&AS*, 38, 15
van der Kruit P. C., 1988, *A&A*, 192, 117
van der Kruit P. C., de Grijs R., 1999, *A&A*, 352, 129
van der Kruit P. C., Searle L., 1981, *A&A*, 95, 105
van der Marel R. P., Franx M., 1993, *ApJ*, 407, 525
Vasiliev E., Valluri M., 2020, *ApJ*, 889, 39
Walo-Martín D., Falcón-Barroso J., Dalla Vecchia C., Pérez I., Negri A., 2020, *MNRAS*, 494, 5652
Wisnioski E. et al., 2015, *ApJ*, 799, 209
Zhao H., Spergel D. N., Rich R. M., 1994, *AJ*, 108, 2154
Zhu L. et al., 2020, *MNRAS*, 496, 1579

This paper has been typeset from a $\text{\TeX}/\text{\LaTeX}$ file prepared by the author.