

# The Relationship between Skewed X-chromosome Inactivation and Neurological Disorders Development

Mahdi Taherian<sup>1</sup>, Hossein Maghsoudi<sup>2</sup>, Kazem Bidaki<sup>2</sup>, Reza Taherian<sup>3</sup>

<sup>1</sup> Food and Drug Administration, Reference Laboratory for Food and Drug Control, Tehran, Iran

<sup>2</sup> Department of Biology, Payame Noor University, Tehran, Iran

<sup>3</sup> Students' Research Committee, School of Medicine, Shahid Beheshti University of Medical Sciences, Tehran, Iran

## ABSTRACT

X-chromosome inactivation (XCI) is a process by which one of the copies of the X chromosome in mammalian female cells is inactivated. The XCI causes a balanced X-linked gene quantity between male and females; moreover, it results mosaic females which have paternal active X in some cells and maternal active X in others. Cellular mosaicism is a noteworthy phenomenon and lowers the risk of X-linked diseases in women because the presentation of a mutation on both X chromosomes is unlikely. Therefore, in heterozygous females, the XCI will be present only on the half of the X genome. In contrast, a similar mutation will present in all of the cells of men. Female carriers of some neurological disorders such as autism, Rett syndrome, adreno-leukodystrophy and X-linked mental retardation are reported to present XCI. These observations underscore the important role of X chromosome in the brain which may be related to the existence of a chromosomal signature of gene expression associated with the X-chromosome for neurological conditions not normally associated with that chromosome. In this review, we focused on latest investigations on the role of XCI in neurodevelopmental disorders and how these investigations can be effective in the treatment of neurodevelopmental disorders.

**Keywords:** Adreno-leukodystrophy; Rett Syndrome; X Chromosome Inactivation, X-linked mental retardation

ICNSJ 2016; 3 (2) :81-91

[www.journals.sbmu.ac.ir/neuroscience](http://www.journals.sbmu.ac.ir/neuroscience)

**Correspondence to:** Reza Taherian, Students' Research Committee, School of Medicine, Shahid Beheshti University of Medical Sciences, Tehran, Iran; Tel: +98-9123314094; E-mail: [r.taherian@sbmu.ac.ir](mailto:r.taherian@sbmu.ac.ir)

**Received:** April 13, 2016

**Accepted:** May 21, 2016

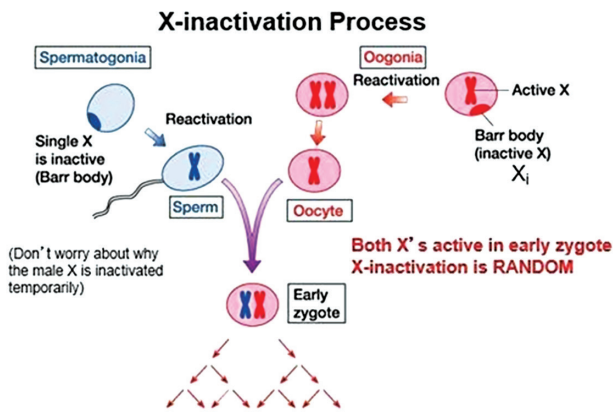
## INTRODUCTION

According to the Lyon hypothesis, after the random inactivation of paternal or maternal X chromosome in a cell, all of the daughters of that cell will have a similar inactivated X. This process results a mosaic females which have paternal active X in some cells and maternal active X in others<sup>1</sup>. Somatic cells have a stable X chromosome inactivation (XCI); however, germline cells have a cyclic XCI. If one of the X was heterochromatinized and compressed during meiosis, pairing and recombination would not completely achieved. Hence, while both X are active during Oogenesis, one of them will be inactivated during mitotic phase of gametogenesis (Figure 1).

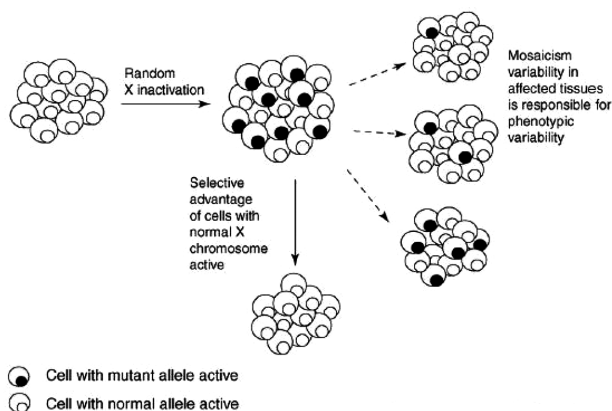
## Skewing of the normal pattern of XCI

Intermediate phenotypes in women who carry X-linked diseases are considered as evidence of skewed XCI<sup>2,3</sup>.

More than 80% (95% in severe cases) of cells show preferred inactivation of one X chromosome in skewed XCI<sup>4</sup>. So that, these heterozygote women mainly will have a single cell population, i.e. paternal or maternal active X<sup>5,6</sup>. Almost 10% of skewed XCI is by chance, meaning that, for example, a heterozygous woman for hemophilia has the least amount of factor VIII and shows typical form of the disease similar to homozygous women for the mutant allele<sup>6,7</sup> (Figure 2). Moreover, chromosomal abnormalities and mutations that give a



**Figure 1.** X chromosome inactivation. Reproduced from <https://www.studyblue.com>.



**Figure 2.** Schematic representation of XCI in female somatic cells <sup>15</sup>.

cell selective advantage or negative attributes may play a role in this skewness. For instance, if one of the X chromosomes carry a mutant allele, which opposes cell survival or inhibits the growth of cells, the cells will inactivate that X chromosome in order to provide cell survival and growth <sup>8</sup>. Also, mutations in the XIC (X inactivation center), which is a 13 Mb area in Xq chromosome, mutation in Xist (X-inactive specific transcript) promoter <sup>8,9</sup> or Tsix gene (a gene antisense to Xist) deletion <sup>10</sup> may all cause skewed XCI. Promoter single nucleotide polymorphisms or mutations affecting the start of transcription of Tsix, Xist and Xite also can change start of a correct XCI. For instance, single nucleotide polymorphism in the second binding protein of CTCF in Xist causes skewed XCI in order to inactivate the other polymorphic allele <sup>9-11</sup>. It should be noted that in most cases, the reason for this skewing is unknown.

This skewing may occur during inactivating, which is called primary skewing, or it may be the result of selection after the XCI which is called secondary skewing. For example, the slower proliferation of cells

expressing a mutant allele is considered as a secondary skewed XCI <sup>3,5</sup>. Cross of different strains of mice Shows Xce (X-controlling element) locus to be the cause of a primary, but not complete, skewed XCI and suggests that these alleles cannot disrupt inactivation process but they can disrupt the randomness of the beginning phases of inactivation process <sup>12</sup>. There are not any evidence to confirm the presence of Xce locus in humans <sup>13</sup>. As mentioned before, in heterozygous women with a skewed XCI, a single cell population with similar active X is observed. Thus, the mutant gene on that chromosome will be expressed in all cells and the normal allele will be covered on the inactivated X. Hence, these heterozygous women can show some diseases which are normally presented only in men. This phenomenon is known as manifesting heterozygote <sup>7,14</sup>.

Despite some previous reports of familial skewed XCI, such evidences are insufficient to confirm the heritable pattern of skewing in humans <sup>16</sup>. In carriers of X-linked diseases, degree of skewing of XCI pattern, can affect the severity of disease. In general, investigating the primary phases of XCI is very difficult the spread of XCI in human studies early events is very difficult. A delayed replication is a good cytological marker for studying XCI process. In X:autosome translocations, XCI can spread to autosomal areas; however, this spread seems less efficient compared to spreading on X chromosome <sup>17</sup>. In women with Balanced X:autosome translocation, the normal X will be inactivated completely, but not persistently, to avoid partial autosomal monosomy or X disomy <sup>3,18</sup>. This selective inactivation of one of the X chromosomes will cause an X-linked disease in carrier women <sup>4,16,19</sup>. In imbalanced X:autosome translocations, the abnormal X will preferably be inactivated <sup>3</sup>. Investigating the spreading of XCI into autosomal areas will provide analysis of the DNA elements involved in the XCI signal propagation. In some cases of XCI spreading, the translocation stops in the breaking sites and cannot spread to autosomal areas <sup>20</sup>, while, it will spread incompletely to that areas <sup>21</sup>. Study of spread of Xist RNA into autosomal areas has shown the variable abilities of Xist to cover autosomal areas <sup>22</sup>. Moreover, gene expression investigations have shown that most genes in a X:autosome translocation escape inactivation <sup>3</sup>. The incomplete spreading of XCI to autosomal areas suggests the presence of some functional areas that contribute to the spread of XCI and are more frequent on X chromosome compared to autosomal chromosomes <sup>23</sup>. Comparing the abilities of translocation in spreading XCI raised the “repeat hypothesis” in which the LINE-1 retrotransposons, which are frequent on X

chromosome, act as inactivation propagation elements<sup>24</sup>. Bioinformatics studies have shown that LINEs are frequent around transcription start sites of the genes that are incurred XCI<sup>25,26</sup>. Repeats of polymorphic CAG in exon 1 of the androgen receptor gene, which is located on the Xq 11.2, and methylation of active and inactive X chromosomes can be used to investigate the XCI pattern. Figure 3 shows the detection method of inactivated X chromosome by two polymorphic repeats (a and b). The PCR is done after the effect of methylation-sensitive

enzymes, such as HpaII, which do not break inactive X chromosome because they are methylated before<sup>4,27</sup>.

### Skewed XCI and X-linked diseases

Although gene expression studies are an important source of data in investigating neurodegenerative disorders, lists of differentially expressed genes are rarely helpful in understanding the underlying mechanisms of these diseases<sup>29</sup>. Hence, investigating single chromosomes with a high role in developing neuro-developmental disorders

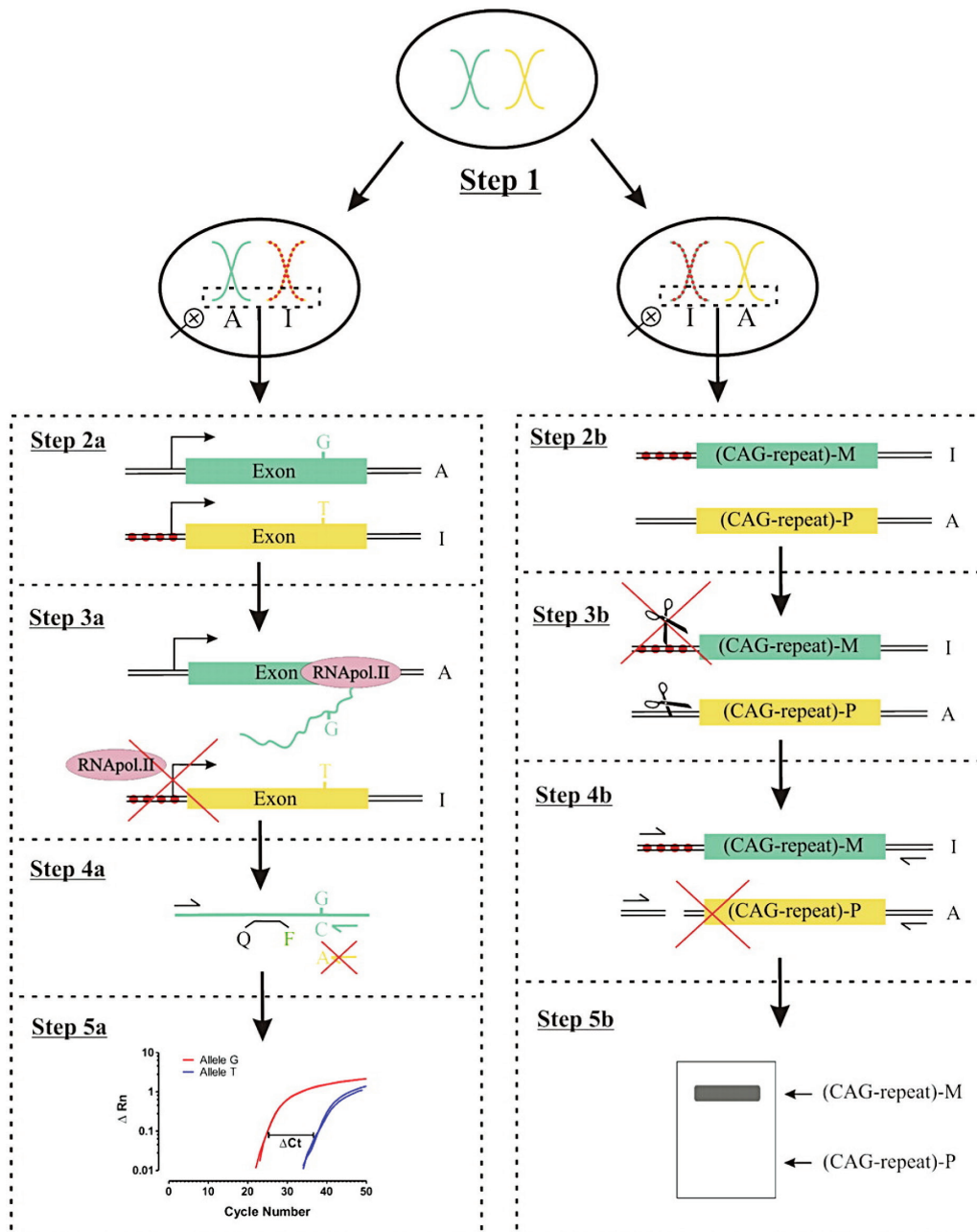


Figure 3. Method of identifying inactive X chromosome<sup>28</sup>.

is more helpful. The X-chromosome contains a large number of genes that are essential for brain development and function<sup>30</sup>. The expression of chromosome X is generally higher in brain compared to other tissues<sup>31</sup>. This higher expression is linked to “X dosage compensation” mechanism; a mechanism that associates the expression of X-linked genes with the expression of genes on autosomal chromosomes<sup>32-35</sup>. Several brain disorders are also associated with mutations of genes on X chromosome<sup>36-38</sup>. Heterozygous women show skewed XCI in several X-linked diseases such as Wiskott-Aldrich, Lesch-Nyhan, Barth, Muscular dystrophy Duchesne, hemophilia, and some immune deficiency syndrome<sup>39-41</sup>. In these cases, a higher prevalence of skewed aging is observed by aging<sup>6,7</sup>. The skewed XCI causes variable manifestations of many neurological disorders including autism, Rett syndrome, X-linked adreno-leukodystrophy, X-linked mental retardation and etc<sup>8,27,42-44</sup>.

Cell removal is the most common phenomenon occurred in heterozygote women with two cell populations and can yield many advantages for them<sup>40</sup>. For example, in heterozygotes older than 10 years who carry the Lesch-Nyhan syndrome gene, the mutant cells could not be detected in their blood and they are completely removed due to presence of cells expressing normal allele<sup>7</sup>. Although the presence of the cells with normal allele may not be dominant, it is sufficient to preclude the mutant allele phenotype.

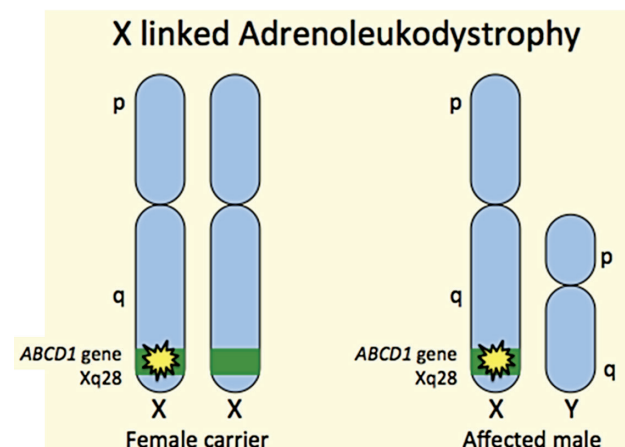
In heterozygous women, dermal cells with normal allele compete well with Lesch-Nyhan mutation. Because, normal cells, transmit inosinic acid, which is the product of hypoxanthine guanine phosphoribosyl transferase (HGPRT) enzyme, and is absent in this disease. Indeed, heterozygous women have channels that pass molecules such as inosinic acid and so, with the removal of cells with mutant alleles that do not have these channels, deficiency in HGPRT is compensated<sup>7</sup>.

### X-linked adrenoleukodystrophy

X-linked adreno-leukodystrophy (X-ALD) was first described by Haberfeld and Spieler in 1910. However, Siemerling and Creutzfeldt described combination of adrenocortical atrophy, cerebral demyelination and lymphocytic infiltration in a case of what is now considered the first true report of X-ALD. The name X-ALD was first introduced in 1970<sup>45</sup>. In this disorder, the characteristic accumulation of very long chain fatty acids (VLCFA) is observed which was first observed as the presence of lipid inclusions in adrenal cells of X-ALD. Now, detection of the accumulation of VLCFAs in blood, red blood cells,

fibroblasts and amniocytes with new assays enables better and earlier diagnosis of X-ALD. The adult form of X-ALD was named adrenomyeloneuropathy (AMN) by Griffin et al. in 1977<sup>46</sup>. As our knowledge about X-ALD increases, the diagnosis of this disorder will be more probable and consequently its incidence will increase. Like other X-linked disorders, referring the X-ALD as an X-chromosomal recessive disorder is inappropriate and it should be simply called as an X-linked disorder<sup>47</sup>. It is estimated that about half of the heterozygous X-ALD females will develop adrenomyeloneuropathy-like syndrome<sup>48</sup>. Thus, heterozygote X-ALD is more prevalent than homozygote<sup>49</sup>. Thus, X-ALD is both the most frequent peroxisomal disorder and also the most frequent monogenetically inherited demyelinating disorder. This monogenic inherit is now considered to be related to the mutations in the ABCD1 gene<sup>50</sup> (Figure 4).

The inherited defect in X-ALD is linked to a mutation in G-6-PD gene which is located in the Xq28<sup>51</sup> with polymorphic markers<sup>52,53</sup>. Using positional cloning, the G-6-PD was cloned and after that it was termed adreno-leukodystrophy gene. As this gene encodes a peroxisomal transmembrane protein with a structure similar to the ATP-binding cassette transporter, the gene was renamed to ATP-Binding Cassette transporter subfamily D member1 gene (ABCD1). However, the protein is still termed as adreno-leukodystrophy protein (ALDP). Until now, 431 different mutant ABCD1 alleles have been reported. Of these mutations, 221 are missense mutations, 53 nonsense mutations, 27 amino acid insertions and deletions, 113 frame shift mutations and 17 deletions of one or more exons. These mutations are equally distributed among the entire coding region of the ABCD1 gene, however, investigating the 221 missense



**Figure 4.** X-linked adreno-leukodystrophy genetic. Reproduced from <http://genetics4medics.com>

mutations showed that there is no disease-associated mutation within the first 88 N-terminal amino acids and in the last 45 C-terminal amino acids. Interestingly two single base pair substitutions in exon 1 is reported in one of X-ALD cases which causes amino acid exchanges (N13T and K217E). Previous studies have shown that K217E amino acid exchange was the only ineffective exchange in restoration of defected  $\beta$ -oxidation in X-ALD fibroblasts<sup>54</sup>. However, ALDP function is not affected by the N13T amino acid exchange which is consistent with the hypothesis that a reduced functional importance in the first 66 N-terminal amino acids of ALDP is present. No correlation is observed ABCD1 gene mutation type and the disease clinical presentation. This report is consistent with previous studies<sup>55-58</sup>. These studies showed that clinical presentation of X-ALD occur within the same nuclear family<sup>55</sup>, mutations causing complete loss of ALDP are associated with various clinical presentations<sup>56</sup>, a similar deletion in exon 5 leads to a wide spectrum of X-ALD<sup>56,57</sup> and finally, monozygotic twins present completely different clinical presentations<sup>58</sup>. However, these studies do not lower the possibility of the preventive role of residual ALDP in development of inflammatory cerebral form of X-ALD and its consequent milder phenotype. In the p-glycoprotein multidrug resistance transporter, some mutations can lower the transport rate. ABCA4 (ABCR) gene may also has residual functional activity in age-related macular degeneration and Stargardt disease<sup>59</sup>. Thus, although a general genotype–phenotype association cannot be observed, rare cases with this association may exist.

Besides the presence of functional ABCD1 gene on Xq28, several autosomal pseudogenes are detectable of different chromosomes. ABCD1 pseudogenes are located in 1, 2, 20, 22, and possibly 16 chromosomes which can be detected by PCR analysis of human monochromosomal mapping panel<sup>56</sup>. The pseudogenes on several different chromosomes harden the mutation analysis<sup>60</sup> and may show non-homologous interchromosomal exchange pericentromeric plasticity<sup>61</sup>.

### **X-Linked Mental Retardation**

Mental retardation (MR) is known as the impairment of cognitive function which affects about 3% of the population in the US. This disorder is often manifested before adulthood and 20–30% of MR may be inherited or have a genetic background by mutations on the X chromosome X-linked mental retardation (XLMR). Based on their clinical presentation, XLMRs are considered as two types of non-syndromic and syndromic. However,

since there are several mutations responsible for these clinical presentation, the difference between these two types is now less notable. About 73 dysfunction of PAK are considered to be involved in the incidence of both types of XLMR. Several X-linked mutations causing non-syndromic MR (MRX) are detected on the X chromosome. This type of MR is clinically similar but they are genetically diverse. Now, more than 65 MRX pedigrees are detected on different loci on the X chromosome and it is estimated that these pedigrees represent about 10 genetic loci<sup>62,63</sup>. Among these loci, probably about two MRX genes have the key roles in the mentioned signaling. The first gene is named GDI1 which encodes a GDP-dissociation inhibitor for Rab3a and regulates vesicular transport. Hence, GDI1 mutations changes the exocytic activity which is in part related to the synaptic transmission. Another gene which is mutated in MRX encodes a protein which includes a GTPase activation domain (GAP) for Rho GTPases and is called oligophrenin. Since these proteins induce the GTPase activity, inactivation of them leads to permanent activity of the corresponding G protein. Oligophrenin have Gap activity for the signals that control actin cytoskeletal organization and cell shape<sup>64</sup>. One of these proteins is Rho GTPase which directly controls the axon and dendritic shape and activity<sup>65-66</sup>. The role of a Rho GAP in human mental retardation implicates its involvement in neural plasticity. Moreover, PAK3 is reported to be isolated from Xq22 in MRX families<sup>67</sup>. The PAK3 gene is mainly expressed in the brain, and it is known as an important downstream effector of Rho GTPases through actin cytoskeleton and MAPK cascades. Two diseases are reported to have mutations in MRX pedigrees, one of them includes a nonsense<sup>68</sup> and another a missense mutation<sup>69</sup> which implicate the association between PAK3 and pathogenesis of MRX.

Considering the role of PAK in fragile X syndrome (FXS), recent studies have shown a defective activation of synaptic RAC/PAK signaling in the mouse model of FXS<sup>70</sup>. Expectantly, inhibiting PAK activity reduces various cellular and behavioral deficits, including FXS-related abnormalities<sup>71</sup>. These results implicate the role of PAK signaling in the FXS pathogenesis.

Fragile X syndrome is the most common inherited form of mental retardation<sup>72,73</sup>. Although the pathogenesis of FXS is not well understood, it is probably the result of the expansion of the CGG repeat in the 5-untranslated region of the fragile X mental retardation 1 (FMR1) gene which is located on the X chromosome<sup>74</sup>. This expansion silences the transcription of FMR1 gene and leads to the

FXS phenotype. The resultant change of the length of the CGG is the main factor in determining FXS disease or its carrier form. Having more than 200 CGG repeats causes FXS-associated cognitive deficits and abnormal cortical dendritic spines<sup>75</sup>.

FMR1 protein (FMRP) plays an important role in regulation of mRNA translation, transport and stability<sup>76,77</sup>. In the brain, FMRP can regulate translation of a group of mRNAs at synapses which are essential for learning and intellectual development. Consequently, in the absence of FMRP, reduced mRNA translation causes the defect in synaptic function and synaptic plasticity<sup>76,78,79</sup>. FMR1 Knocked-out mice show behavioral defects similar to FXS patients. These behavioral disturbances include hyper-reactivity to auditory stimuli, anxiety, impaired spatial learning and impairment in motor coordination<sup>80-82</sup>. Hence, the association between PAK and FMRP<sup>71</sup> or defected synaptic RAC/PAK signaling implicate the reduced synaptic plasticity in patients with FXS. Thus, targeting PAK signaling may be a potential therapeutic strategy in formulating new drugs to treat FXS.

In summary, previous data show that normal memory and leaning is achieved by functional PAK and pathways which are disturbed in FXS and similar disorders with developmental cognitive deficits such as dementia of aging (AD) and Huntington disease (HD). Inhibition of PAK seems to be an effective approach in treating FXS, AD and HD. Inhibitors of PAK likely have important effects on improving cognition by improving dendritic spine morphology and/or synaptic plasticity. This hypothesis considers PAK activation as a contributing factor in the incidence of various neurological disorders and probably suggest a common treatment for them based on the correcting PAK dysregulation.

### Rett Syndrome

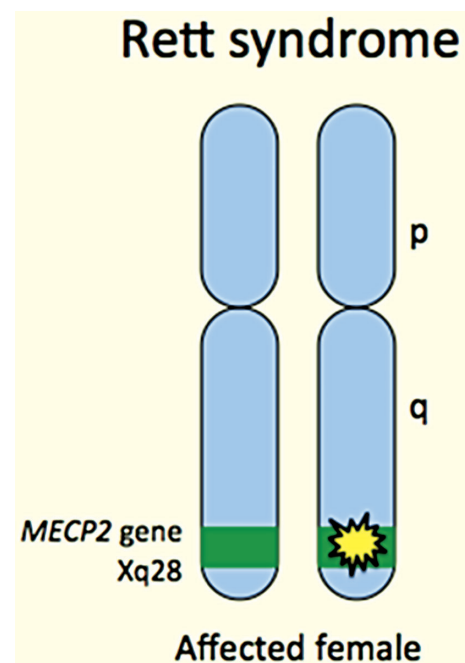
Rett syndrome (RTS) is considered as a progressive disorder affecting neuro-development in girls; however, some of the features of the disease appears slowing are not prominent at initial stages of the disease. These patients develop normally up to 6-18 months of age. During this development, patients will have a normal milestones including walking and saying some words. One of the early signs of neuro-developmental involvement is microcephaly which is the result of the deceleration of head growth between ages one and two and is associated with growth retardation and muscular hypotonia. Progression of the disease causes a lost purposeful use of hands which interrupts normal hand functions. The patient will be withdrawn socially and inability to

speech become more apparent by aging which turns the patient irritable. The patients is also hypersensitive to surrounding sounds, cannot make an eye-to-eye contact and is unresponsiveness to social cues<sup>83</sup>.

### Genetic Basis of RTS

Considering that most of the RTS patients are female, early studies have hypothesized an X-linked dominant model of inheritance in RTS. However, almost all of the RTS cases are sporadic and mapping the generic inheritance of the disease was difficult. Using data from rare familial cases, Xq28 was identified as the candidate region and subsequently, mutations in MECP2 were identified in RTS patients<sup>84</sup> (Figure 5).

These mutations can be detected in about 96% of RTS cases and arise de novo in the paternal germline with a C to T transition at CpG dinucleotides<sup>85</sup>. These mutations include missense, nonsense, and frameshift mutation types with over 300 unique pathogenic nucleotide changes described<sup>86</sup> as well as deletions<sup>87,88</sup>. Eight missense and nonsense mutations are responsible for more than 75% of all of the mutations in RTS. C-terminal deletions causes 10% and complex rearrangements are responsible for about 6% of all mutations in RTS. Missense mutations cause a more mild phenotype than mutations affecting the NLS of MeCP2; Similarly, C-terminal deletions are associated with milder phenotypes<sup>89</sup>. Moreover, a mild phenotype is present in the R133C mutation<sup>90,91</sup>.



**Figure 5.** Rett syndrome genetic. Reproduced from <http://genetics4medics.com>.

## Autism

The diagnosis of autism is based on the presence of abnormality in a triad of behavioral domains: social development, communication, and repetitive behavior/obsessive interests. While autism can occur at any point on the intelligence quotient (IQ) continuum, IQ can predict the outcome of autism. The disease is associated with a language delay. Autism has a spectrum which Asperger syndrome is a subgroup of it. Patients with this syndrome have similar features of common autism; however, they have no history of language delay and moreover, they have an average or higher than average IQ. The features of autism spectrum is highly probable to be caused by genetic factors. The risk of presence of autism in the sibling of a patient is 4.5% which emphasizes a genetic inheritance<sup>92</sup> (Figure 6).

In a study of same sex autistic twins, while no dizygotic twins were concordant for autism, concordance was present in about 60% of monozygotic pairs<sup>93</sup>. This concordance in monozygotic twins shows a high degree of genetic inheritance of autism. Different genetic studies are done to determine the candidate regions involved in autism. Although these regions are not fully understood, two regions are the most probable candidates. These regions are 15q11-13, near the GABA<sub>A</sub>3 receptor subunit gene (GABRB3) and 17q11.2, near the serotonin transporter gene (SLC6A4). The second region is under high investigations because of the previous reports about the increased serotonin levels of platelets in autism. Also, the involvement of serotonin in autism is highly probable because it innervates the limbic system which has known roles in emotion recognition and empathy. At least four loci on the X chromosome are also detected to be involved in autism and are high interest due to their

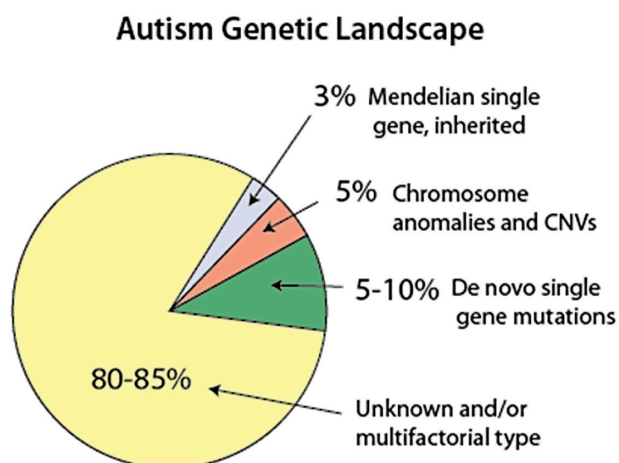


Figure 6. Autism genetic prospect<sup>92</sup>.

ability to clarify sex differences in autism. These genes are the neuroligin (NLGN3, NLGN4), FMR1 (which causes fragile X syndrome), and MECP2. Despite there are candidate regions, specific genes for autism have not been detected yet. Further research is needed to detect these specific genes and also to clarify their function and ultimately the relation between different influential factors in autism<sup>92</sup>.

## Charcot-Marie-Tooth

Charcot-Marie-Tooth (CMT) which is known as hereditary motor and sensory neuropathy consists of clinically and pathologically heterogeneous group of disorders. This disease is considered as a common form of peripheral inherited neuropathy in humans. The disease includes slowly progressive atrophy; weakness of the distal muscles; sensory loss in the feet, lower legs, and hands; and reduced tendon reflexes<sup>94</sup>. CMT is classified into types 1 and 2 based on the histopathology and nerve conduction studies<sup>95</sup>. Although some X-linked and autosomal recessive forms of the disease are reported, the most common form of CMT is inherited autosomal dominant<sup>96</sup>. CMT 1A is a demyelinating neuropathy related to a duplication of piece of gene on 17p11 chromosome which encodes myelin protein<sup>97</sup>. It is the most common form of the disease inherited as an autosomal dominant disease. The clinical expression of this disease depends on the age of the patient and the average age of the onset of clinical features is 12.2+7.3 years. At least three loci are included in CMT1: the CMT1A locus maps to human chromosome 17 and the CMT1B locus maps to human chromosome 1 (region q23-q25)<sup>98</sup>. Since the clinical phenotypes of CMT1 syndromes cannot be distinguished, unless in cases of male to male inheritance, three genes must be sequenced which include connexin gene, po gene and PMP22 gene for X-linked CMT, CMT1B and CMT1A respectively<sup>99</sup>. The X-linked CMT due to the connexin 32 (Cx32) gene mutation is the second most common form of CMT<sup>100</sup> (Figure 7).

This gene is expressed in several tissues including both peripheral nerve axons and CNS glia and neurons. Families with dominant inheritance, which is revealed by a male-to-male inheritance, PMP22 and po genes must be screened for mutations. Families with no male-to-male inheritance or CMT1A may be screened for connexin 32 gene first and then Po and PMP22<sup>102</sup>. In an X-linked pattern of inheritance, male are more severely affected and not father-to-son transmission is seen. Females who are heterozygous and may be asymptomatic. Intermediate

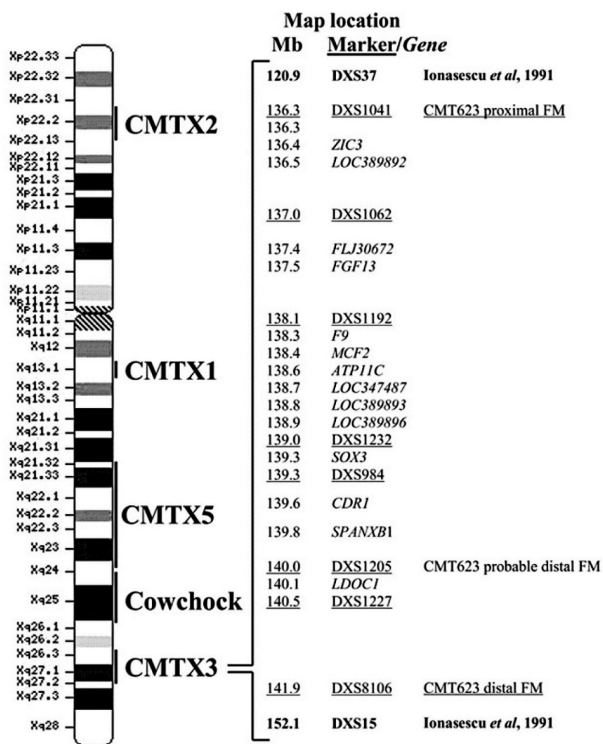


Figure 7. Genetic heterogeneity in X-linked Charcot–Marie–Tooth disease <sup>101</sup>.

range motor conduction velocities is found in X-linked CMT. Accordingly, prolonged brainstem auditory evoked potentials (BAEPs) may be used as a distinguishing feature X-linked CMT in males and females due to XCI in females <sup>103</sup>.

### DISCLOSURE STATEMENT

The authors have nothing to disclose.

### REFERENCES

1. Yen ZC, Meyer IM, Karalic S, Brown CJ. A cross-species comparison of X-chromosome inactivation in Eutheria. *Genomics*. 2007;90(4):453-63.
2. Willard H, Brown C, Carrel L, Hendrich B, Miller A, editors. *Epigenetic and chromosomal control of gene expression: molecular and genetic analysis of X chromosome inactivation*. Cold Spring Harbor symposia on quantitative biology; 1993: Cold Spring Harbor Laboratory Press.
3. Yang C, Chapman AG, Kelsey AD, Minks J, Cotton AM, Brown CJ. X-chromosome inactivation: molecular mechanisms from the human perspective. *Human genetics*. 2011;130(2):175-85.
4. Minks J, Robinson WP, Brown CJ. A skewed view of X chromosome inactivation. *The Journal of clinical investigation*. 2007;118(1).

5. Amos-Landgraf JM, Cottle A, Plenge RM, Friez M, Schwartz CE, Longshore J, et al. X Chromosome–Inactivation Patterns of 1,005 Phenotypically Unaffected Females. *The American Journal of Human Genetics*. 2006;79(3):493-9.
6. Muers MR, Sharpe JA, Garrick D, Sloane-Stanley J, Nolan PM, Hacker T, et al. Defining the cause of skewed X-chromosome inactivation in X-linked mental retardation by use of a mouse model. *The American Journal of Human Genetics*. 2007;80(6):1138-49.
7. Migeon BR. Why females are mosaics, X-chromosome inactivation, and sex differences in disease. *Gender medicine*. 2007;4(2):97-105.
8. Wang Z, Yan A, Lin Y, Xie H, Zhou C, Lan F. Familial skewed x chromosome inactivation in adrenoleukodystrophy manifesting heterozygotes from a chinese pedigree. *PloS one*. 2013;8(3):e57977.
9. Pugacheva EM, Tiwari VK, Abdullaev Z, Vostrov AA, Flanagan PT, Quitschke WW, et al. Familial cases of point mutations in the XIST promoter reveal a correlation between CTCF binding and pre-emptive choices of X chromosome inactivation. *Human molecular genetics*. 2005;14(7):953-65.
10. Jeon Y, Sarma K, Lee JT. New and Xisting regulatory mechanisms of X chromosome inactivation. *Current opinion in genetics & development*. 2012;22(2):62-71.
11. Barakat TS, Jonkers I, Monkhorst K, Gribnau J. X-changing information on X inactivation. *Experimental cell research*. 2010;316(5):679-87.
12. Cattanach B, Isaacson J. Controlling elements in the mouse X chromosome. *Genetics*. 1967;57(2):331.
13. Tomkins DJ, McDonald HL, Farrell SA, Brown CJ. Lack of expression of XIST from a small ring X chromosome containing the XIST locus in a girl with short stature, facial dysmorphism and developmental delay. *European Journal of Human Genetics*. 2002;10(1):44-51.
14. Salsano E, Tabano S, Sirchia SM, Colapietro P, Castellotti B, Gellera C, et al. Preferential expression of mutant ABCD1 allele is common in adrenoleukodystrophy female carriers but unrelated to clinical symptoms. *Orphanet journal of rare diseases*. 2012;7(1):1.
15. Franco, Brunella, Andrea Ballabio. X-inactivation and human disease: X-linked dominant male-lethal disorders. *Current opinion in genetics & development*. 2006;16(3):254-259.
16. Bolduc V, Chagnon P, Provost S, Dubé M-P, Belisle C, Gingras M, et al. No evidence that skewing of X chromosome inactivation patterns is transmitted to offspring in humans. *The Journal of clinical investigation*. 2008;118(1):333-41.
17. Sharp AJ, Spotswood HT, Robinson DO, Turner BM, Jacobs PA. Molecular and cytogenetic analysis of the spreading of X inactivation in X; autosome translocations. *Human molecular genetics*. 2002;11(25):3145-56.
18. Schmidt M, Du Sart D. Functional disomies of the X chromosome influence the cell selection and hence the X inactivation pattern in females with balanced X-autosome translocations: a review of 122 cases. *American journal of medical genetics*. 1992;42(2):161-9.
19. Jacobs PA, Hunt PA, Mayer M, Bart RD. Duchenne muscular dystrophy (DMD) in a female with an X/autosomal



- translocation: Further evidence that the DMD locus is at Xp21. *American journal of human genetics*. 1981;33(4):513.
20. Solari A, Rahn I, Ferreyra M, Carballo M. The behavior of sex chromosomes in two human X-autosome translocations: failure of extensive X-inactivation spreading. *Biocell: official journal of the Sociedades Latinoamericanas de Microscopia Electronica et al*. 2001;25(2):155-66.
  21. Caiulo A, Bardoni B, Camerino G, Guioli S, Minelli A, Piantanida M, et al. Cytogenetic and molecular analysis of an unbalanced translocation (X; 7)(q28; p15) in a dysmorphic girl. *Human genetics*. 1989;84(1):51-4.
  22. Hall LL, Clemson CM, Byron M, Wydner K, Lawrence JB. Unbalanced X; autosome translocations provide evidence for sequence specificity in the association of XIST RNA with chromatin. *Human molecular genetics*. 2002;11(25):3157-65.
  23. Gartler SM, Riggs AD. Mammalian X-chromosome inactivation. *Annual review of genetics*. 1983;17(1):155-90.
  24. Lyon MF. X-chromosome inactivation: a repeat hypothesis. *Cytogenetic and Genome Research*. 1998;80(1-4):133-7.
  25. Wang Z, Willard HF, Mukherjee S, Furey TS. Evidence of influence of genomic DNA sequence on human X chromosome inactivation. *PLoS Comput Biol*. 2006;2(9):e113.
  26. Gartler SM, Goldman MA. Biology of the X chromosome. *Current opinion in pediatrics*. 2001;13(4):340-5.
  27. Bittel DC, Theodoro MF, Kibiryeve N, Fischer W, Talebizadeh Z, Butler MG. Comparison of X-chromosome inactivation patterns in multiple tissues from human females. *Journal of medical genetics*. 2008;45(5):309-13.
  28. Swierczek SI, Agarwal N, Nussenzveig RH, Rothstein G, Wilson A, Artz A, et al. Hematopoiesis is not clonal in healthy elderly women. *Blood*. 2008;112(8):3186-3193.
  29. Mitchell AC, Mirmics K. Gene expression profiling of the brain: pondering facts and fiction. *Neurobiology of disease*. 2012;45(1):3-7.
  30. Laumonier F, Cuthbert PC, Grant SG. The role of neuronal complexes in human X-linked brain diseases. *The American Journal of Human Genetics*. 2007;80(2):205-20.
  31. Disteché CM. High expression of the mammalian X chromosome in brain. *Brain research*. 2006;1126(1):46-9.
  32. Disteché CM. Dosage compensation of the active X chromosome in mammals. *Nature genetics*. 2006;38(1):47-53.
  33. Straub T, Becker PB. Dosage compensation: the beginning and end of generalization. *Nature Reviews Genetics*. 2007;8(1):47-57.
  34. Deng X, Hiatt JB, Ercan S, Sturgill D, Hillier LW, Schlesinger F, et al. Evidence for compensatory upregulation of expressed X-linked genes in mammals, *Caenorhabditis elegans* and *Drosophila melanogaster*. *Nature genetics*. 2011;43(12):1179-85.
  35. Kharchenko PV, Xi R, Park PJ. Evidence for dosage compensation between the X chromosome and autosomes in mammals. *Nature genetics*. 2011;43(12):1167-9.
  36. Oostra B, Willemsen R. The X chromosome and fragile X mental retardation. *Cytogenetic and genome research*. 2003;99(1-4):257-64.
  37. Chadwick LH, Wade PA. MeCP2 in Rett syndrome: transcriptional repressor or chromatin architectural protein? *Current opinion in genetics & development*. 2007;17(2):121-5.
  38. Zanni G, Bertini ES. X-linked disorders with cerebellar dysgenesis. *Orphanet journal of rare diseases*. 2011;6(1):1.
  39. Migeon BR. The role of X inactivation and cellular mosaicism in women's health and sex-specific diseases. *Jama*. 2006;295(12):1428-33.
  40. Kristiansen M, Langerød A, Knudsen G, Weber B, Børresen-Dale A, Ørstavik K. High frequency of skewed X inactivation in young breast cancer patients. *Journal of medical genetics*. 2002;39(1):30-3.
  41. Biccocchi MP, Migeon BR, Pasino M, Lanza T, Bottini F, Boeri E, et al. Familial nonrandom inactivation linked to the X inactivation centre in heterozygotes manifesting haemophilia A. *European journal of human genetics*. 2005;13(5):635-40.
  42. Knudsen GPS, Neilson TC, Pedersen J, Kerr A, Schwartz M, Hulten M, et al. Increased skewing of X chromosome inactivation in Rett syndrome patients and their mothers. *European journal of human genetics*. 2006;14(11):1189-94.
  43. Talebizadeh Z, Bittel D, Veatch O, Kibiryeve N, Butler M. Brief report: non-random X chromosome inactivation in females with autism. *Journal of autism and developmental disorders*. 2005;35(5):675-81.
  44. Plenge RM, Stevenson RA, Lubs HA, Schwartz CE, Willard HF. Skewed X-chromosome inactivation is a common feature of X-linked mental retardation disorders. *The American Journal of Human Genetics*. 2002;71(1):168-73.
  45. Blaw M. Melanodermic type leukodystrophy (adrenoleukodystrophy). *Handbook of clinical neurology*. 1970;10:128-33.
  46. GRIFFIN JW, GOREN E, SCHAUMBURG H, Engel WK, LORIAUX L. Adrenomyeloneuropathy A probable variant of adrenoleukodystrophy I. Clinical and endocrinologic aspects. *Neurology*. 1977;27(12):1107-.
  47. Dobyns WB, Filauro A, Tomson BN, Chan AS, Ho AW, Ting NT, et al. Inheritance of most X-linked traits is not dominant or recessive, just X-linked. *American journal of medical genetics Part A*. 2004;129(2):136-43.
  48. Restuccia D, Di Lazzaro V, Valeriani M, Oliviero A, Le Pera D, Colosimo C, et al. Neurophysiological abnormalities in adrenoleukodystrophy carriers. Evidence of different degrees of central nervous system involvement. *Brain*. 1997;120(7):1139-48.
  49. Bezman L, Moser AB, Raymond GV, Rinaldo P, Watkins PA, Smith KD, et al. Adrenoleukodystrophy: incidence, new mutation rate, and results of extended family screening. *Annals of neurology*. 2001;49(4):512-7.
  50. Kemp S, Pujol A, Waterham HR, van Geel BM, Boehm CD, Raymond GV, et al. ABCD1 mutations and the X-linked adrenoleukodystrophy mutation database: Role in diagnosis and clinical correlations. *Human mutation*. 2001;18(6):499-515.
  51. Migeon BR, Moser HW, Moser AB, Axelman J, Sillence D, Norum RA. Adrenoleukodystrophy: evidence for X

- linkage, inactivation, and selection favoring the mutant allele in heterozygous cells. *Proceedings of the National Academy of Sciences*. 1981;78(8):5066-70.
52. Oberle I, Drayna D, Camerino G, White R, Mandel J-L. The telomeric region of the human X chromosome long arm: presence of a highly polymorphic DNA marker and analysis of recombination frequency. *Proceedings of the National Academy of Sciences*. 1985;82(9):2824-8.
53. Aubourg PR, Sack GH, Meyers DA, Lease JJ, Moser HW. Linkage of adrenoleukodystrophy to a polymorphic DNA probe. *Annals of neurology*. 1987;21(4):349-52.
54. Dvorakova L, Storkanova G, Unterrainer G, Hujová J, Kmoch S, Zeman J, et al. Eight novel ABCD1 gene mutations and three polymorphisms in patients with X-linked adrenoleukodystrophy: The first polymorphism causing an amino acid exchange. *Human mutation*. 2001;18(1):52.
55. Berger J, Molzer B, Fae I, Bernheimer H. X-linked adrenoleukodystrophy (ALD): a novel mutation of the ALD gene in 6 members of a family presenting with 5 different phenotypes. *Biochemical and biophysical research communications*. 1994;205(3):1638-43.
56. Smith KD, Kemp S, Braiterman LT, Lu J-F, Wei H-M, Geraghty M, et al. X-linked adrenoleukodystrophy: genes, mutations, and phenotypes. *Neurochemical research*. 1999;24(4):521-35.
57. Kemp S, Ligtenberg MJ, Vangeel BM, Barth PG, Wolterman RA, Schoute F, et al. Identification of a two base pair deletion in five unrelated families with adrenoleukodystrophy: a possible hot spot for mutations. *Biochemical and biophysical research communications*. 1994;202(2):647-53.
58. Korenke GC, Wilichowski E, Hunneman DH, Hanefeld F, Fuchs S, Krasemann E, et al. Cerebral adrenoleukodystrophy (ALD) in only one of monozygotic twins with an identical ALD genotype. *Annals of neurology*. 1996;40(2):254-7.
59. Yatsenko A, Shroyer N, Lewis R, Lupski J. Late-onset Stargardt disease is associated with missense mutations that map outside known functional regions of ABCR (ABCA4). *Human genetics*. 2001;108(4):346-55.
60. Kok F, Neumann S, Sarde CO, Zheng S, Wu KH, Wei HM, et al. Mutational analysis of patients with X-linked adrenoleukodystrophy. *Human mutation*. 1995;6(2):104-15.
61. Eichler EE, Budarf ML, Rocchi M, Deaven LL, Doggett NA, Baldini A, et al. Interchromosomal duplications of the adrenoleukodystrophy locus: a phenomenon of pericentromeric plasticity. *Human molecular genetics*. 1997;6(7):991-1002.
62. Antonarakis S, Van Aelst L. Mind the GAP, Rho, Rab and GDI. *Nature genetics*. 1998;19(2):106-8.
63. Gedeon AK, Donnelly AJ, Mulley JC, Kerr B, Turner G. Letter to the editor: How many X-linked genes for non-specific mental retardation (MRX) are there? *American journal of medical genetics*. 1996;64(1):158-62.
64. Nobes CD, Hall A. Rho, rac, and cdc42 GTPases regulate the assembly of multimolecular focal complexes associated with actin stress fibers, lamellipodia, and filopodia. *Cell*. 1995;81(1):53-62.
65. Kaufmann N, Wills ZP, Van Vactor D. Drosophila Rac1 controls motor axon guidance. *Development*. 1998;125(3):453-61.
66. Luo L, Jan LY, Jan Y-N. Rho family small GTP-binding proteins in growth cone signalling. *Current opinion in neurobiology*. 1997;7(1):81-6.
67. Threadgill R, Bobb K, Ghosh A. Regulation of dendritic growth and remodeling by Rho, Rac, and Cdc42. *Neuron*. 1997;19(3):625-34.
68. Gu XX, Decorte R, Marynen P, Fryns J-P, Cassiman J-J, Raeymaekers P. Localisation of a new gene for non-specific mental retardation to Xq22-q26 (MRX35). *Journal of medical genetics*. 1996;33(1):52-5.
69. Ryan SG, Chance PF, Zou C-H, Spinner NB, Golden JA, Smietana S. Epilepsy and mental retardation limited to females: an X-linked dominant disorder with male sparing. *Nature genetics*. 1997;17(1):92-5.
70. Chen LY, Rex CS, Babayan AH, Kramár EA, Lynch G, Gall CM, et al. Physiological activation of synaptic Rac>PAK (p-21 activated kinase) signaling is defective in a mouse model of fragile X syndrome. *The Journal of Neuroscience*. 2010;30(33):10977-84.
71. Hayashi ML, Rao BS, Seo J-S, Choi H-S, Dolan BM, Choi S-Y, et al. Inhibition of p21-activated kinase rescues symptoms of fragile X syndrome in mice. *Proceedings of the national academy of sciences*. 2007;104(27):11489-94.
72. Coffee B, Keith K, Albizua I, Malone T, Mowrey J, Sherman SL, et al. Incidence of fragile X syndrome by newborn screening for methylated FMR1 DNA. *The American Journal of Human Genetics*. 2009;85(4):503-14.
73. Peprah E. Fragile X syndrome: the FMR1 CGG repeat distribution among world populations. *Annals of human genetics*. 2012;76(2):178-91.
74. Verkerk AJ, Pieretti M, Sutcliffe JS, Fu Y-H, Kuhl DP, Pizzuti A, et al. Identification of a gene (FMR-1) containing a CGG repeat coincident with a breakpoint cluster region exhibiting length variation in fragile X syndrome. *Cell*. 1991;65(5):905-14.
75. Ma Q-L, Yang F, Frautschy SA, Cole GM. PAK in Alzheimer disease, Huntington disease and X-linked mental retardation. *Cellular logistics*. 2012;2(2):117-25.
76. Bassell GJ, Warren ST. Fragile X syndrome: loss of local mRNA regulation alters synaptic development and function. *Neuron*. 2008;60(2):201-14.
77. De Rubeis S, Bagni C. Fragile X mental retardation protein control of neuronal mRNA metabolism: Insights into mRNA stability. *Molecular and Cellular Neuroscience*. 2010;43(1):43-50.
78. Bassell GJ, Gross C. Reducing glutamate signaling pays off in fragile X. *Nature medicine*. 2008;14(3):249-50.
79. Antar L, Dichtenberg J, Plociniak M, Afroz R, Bassell G. Localization of FMRP-associated mRNA granules and requirement of microtubules for activity-dependent trafficking in hippocampal neurons. *Genes, Brain and Behavior*. 2005;4(6):350-9.

80. Baker K, Wray S, Ritter R, Mason S, Lanthorn T, Savelieva K. Male and female Fmr1 knockout mice on C57 albino background exhibit spatial learning and memory impairments. *Genes, Brain and Behavior*. 2010;9(6):562-74.
81. Mineur YS, Huynh LX, Crusio WE. Social behavior deficits in the Fmr1 mutant mouse. *Behavioural brain research*. 2006;168(1):172-5.
82. Peier AM, McIlwain KL, Kenneson A, Warren ST, Paylor R, Nelson DL. (Over) correction of FMR1 deficiency with YAC transgenics: behavioral and physical features. *Human Molecular Genetics*. 2000;9(8):1145-59.
83. Nomura Y. Early behavior characteristics and sleep disturbance in Rett syndrome. *Brain and Development*. 2005;27:S35-S42.
84. Amir RE, Van den Veyver IB, Wan M, Tran CQ, Francke U, Zoghbi HY. Rett syndrome is caused by mutations in X-linked MECP2, encoding methyl-CpG-binding protein 2. *Nature genetics*. 1999;23(2):185-8.
85. Trappe R, Laccone F, Cobilanschi J, Meins M, Huppke P, Hanefeld F, et al. MECP2 mutations in sporadic cases of Rett syndrome are almost exclusively of paternal origin. *The American Journal of Human Genetics*. 2001;68(5):1093-101.
86. Christodoulou J, Grimm A, Maher T, Bennetts B. RettBASE: the IRSA MECP2 variation database—a new mutation database in evolution. *Human mutation*. 2003;21(5):466-72.
87. Archer HL, Whatley SD, Evans JC, Ravine D, Huppke P, Kerr A, et al. Gross rearrangements of the MECP2 gene are found in both classical and atypical Rett syndrome patients. *Journal of medical genetics*. 2006;43(5):451-6.
88. Pan H, Li MR, Nelson P, Bao XH, Wu XR, Yu S. Large deletions of the MECP2 gene in Chinese patients with classical Rett syndrome. *Clinical genetics*. 2006;70(5):418-9.
89. Smeets E, Terhal P, Casaer P, Peters A, Midro A, Schollen E, et al. Rett syndrome in females with CTS hot spot deletions: a disorder profile. *American Journal of Medical Genetics Part A*. 2005;132(2):117-20.
90. Neul J, Fang P, Barrish J, Lane J, Caeg E, Smith E, et al. Specific mutations in methyl-CpG-binding protein 2 confer different severity in Rett syndrome. *Neurology*. 2008;70(16):1313-21.
91. Kerr A, Archer H, Evans J, Prescott R, Gibbon F. People with MECP2 mutation-positive Rett disorder who converse. *Journal of Intellectual Disability Research*. 2006;50(5):386-94.
92. Jorde LB, Hasstedt S, Ritvo E, Mason-Brothers A, Freeman B, Pingree C, et al. Complex segregation analysis of autism. *American journal of human genetics*. 1991;49(5):932.
93. Bailey A, Le Couteur A, Gottesman I, Bolton P, Simonoff E, Yuzda E, et al. Autism as a strongly genetic disorder: evidence from a British twin study. *Psychological medicine*. 1995;25(01):63-77.
94. Harding AE, Thomas PK. The clinical features of hereditary motor and sensory neuropathies type I and II. *Brain* 1980; 103:259±280.
95. England JD, Garcia CA. Electrophysiological studies in the different genotypes of Charcot-Marie-Tooth disease. *Curr Opin Neurol* 1996;9:338±342.
96. McKusick, V. A. (1990). *Mendelian Inheritance in Man* (Baltimore: The Johns Hopkins University Press).
97. Lupski JR, Montes de Oca-Luna R, Slaugenhaupt S, Pentao L, Guzzetta V, Trask BJ, Saucedo-Cardenas O, Barker DF, Killian JM, Garcia CA, Chakravarti A, Patel PI. DNA duplication as-associated with Charcot-Marie-Tooth disease type 1A. *Cell* 1991; 66:219±232.
98. Vance JM, Barker D, Yamaoka LH, Stajich JM, Loprest L, Hung WY, et al. Localization of Charcot-Marie-Tooth disease type 1a (CMT1A) to chromosome 17p11.2. *Genomics*. 1991;9(4):623-8.
99. Nicholson G, Corbett A. Slowing of central conduction in X-linked Charcot-Marie-Tooth neuropathy shown by brainstem auditory evoked responses. *J Neurol Neurosurg Psychiatry* 1996;61:43-46.
100. Ionasescu W, Ionasescu R, Searby C. Screening of dominantly inherited Charcot-Marie-Tooth neuropathies. *Muscle Nerve* 1993;16:1232-1238.
101. Huttner IG, Kennerson ML, Reddel SW, Radovanovic D, Nicholson GA. Proof of genetic heterogeneity in X-linked Charcot-Marie-Tooth disease. *Neurology*. 2006;67(11):2016-21.
102. Dermietzel R, Spray DC. Gap-junctions in the brain: where, what type, how many and why? *Trends Neurosci* 1993;16: 186 -192.
103. Nicholson G, Nash J. Intermediate nerve conduction velocities define X-linked Charcot-Marie-Tooth neuropathy families. *Neurology* 1996;43:2558-2564.