

Photo Quiz

J Ped. Nephrology 2015;3(2):82-83
<http://journals.sbmu.ac.ir/jpn>

A 6 Year-old Male Presented With Difficulty in Passing Urine and Poor Urine Stream

A 6 year old male presented with poor urine stream and difficulty in passing urine. There was no history of urinary tract infection and other urinary problems in the history. VCUG (voiding cystourethrogram) was performed for the patient (Figure 1).

What is your diagnosis?



Fig 1. Voiding cystourethrogram of the patient

Photo Quiz Answer

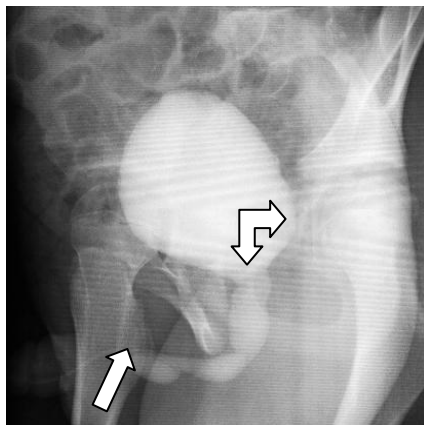
A 6 Year-old Male Presented With Difficulty in Passing Urine and Poor Urine Stream

Roxana Azma*, Ahmad Khaleghnejad Tabari, Samin Alavi
Pediatric Surgery Research Center
Shahid Beheshti University of Medical Sciences, Tehran, Iran

How to Cite This Article: Azma R, Khaleghnejad Tabari A, Alavi S. A 6 Year-old Male Presented With Difficulty in Passing Urine and Poor Urine Stream. *J Ped. Nephrology* 2015;3(2):82-83.

*Corresponding Author

Roxana Azma, MD
Department of Radiology,
Mofid Children's Hospital
Shahid Beheshti University of Medical Sciences,
Tehran, Iran.
Tel:+982122227033
Email: roxanaazma@gmail.com



Voiding cystourethrogram reveals a diverticulum in inferior aspect of penoscrotal junction (white arrow) with dilation of proximal urethra (bulbous, membranous and prostatic part). (double white arrow) The bladder wall is irregular and trabeculated. Bulbous, prostatic and membranous urethra is dilated. The penile urethra appears narrowed. Contrast-filled out pouching is seen at inferior aspect of anterior urethra in favor of diverticulum between penile and bulbous portions (penoscrotal junction). Cystourethroscopy revealed anterior urethral valve.

Anterior urethral valve (AUV) is a rare cause of obstructive uropathy, but if left untreated it can lead to end-stage renal disease (ESRD). Clinically it is presented by recurrent urinary retention, poor urinary stream, incontinence, enuresis, spontaneous bladder rupture, bilateral hydronephrosis and worst of all ESRD. AUV is often associated with proximal urethral distention and anterior urethral diverticulum. Anterior urethral valves can be located anywhere distal to the membranous urethra. Most cases were reported proximal to the penoscrotal junction [1].

References

1. Aygün C, Güven O, Tekin Mİ, Peşkircioğlu L, Özkardeş H. Anterior urethral valve as a cause of end-stage renal disease. *International Journal of Urology* 2001;8(3):141-3.