

# In Vitro Evaluation of the Effect of Different Laser Irradiations on the Enamel Surfaces of Teeth Treated with Home Bleach Procedure

Mahshid Mohammadi Bassir<sup>1</sup>, Mohammad Bagher Rezvani<sup>1</sup>, Nasim Chiniforush<sup>2</sup>, Zohreh Moradi<sup>3</sup>

<sup>1</sup>Department of Operative Dentistry, School of Dentistry, Shahed University of Medical Sciences, Tehran, Iran.

<sup>2</sup>Laser Research Center of Dentistry (LRCD), School of Dentistry, Tehran University of Medical Sciences, Tehran, Iran.

<sup>3</sup>Department of Operative Dentistry, School of Dentistry, Shahed University of Medical Sciences, Tehran, Iran.

## Abstract:

**Introduction:** The aim of this study was to evaluate the effect of dental surface treatment with Erbium-Doped Yttrium Aluminum Garnet (Er: YAG), Neodymium-Doped Yttrium Aluminum Garnet (Nd: YAG) and Carbon Dioxide Laser (CO<sub>2</sub>) lasers and sodium ascorbate to recently home bleached enamel by scanning electron microscope (SEM).

**Methods:** Thirty extracted human third molars were selected for this in vitro study. The teeth were randomly divided in two groups including home bleached group and control group (non-bleached). In group 1, the samples were bleached by home bleach technique. No bleaching procedure was done in second the group which served as control group. Then, the samples of two groups were divided to five subgroups as follow: Subgroup 1: treated using Nd:YAG laser with output power of 1 W, Subgroup 2: treated using Er:YAG laser with output power of 0.5 W, Subgroup 3: treated using CO<sub>2</sub> laser with output power of 0.5 W, Subgroup 4: sodium ascorbate 10%, Subgroup 5: no treatment. After treatments, the surfaces were evaluated using Scanning Electron Microscope (SEM) analysis.

**Results:** The surfaces treated by Nd:YAG laser showed some melting and recrystallized areas and in some area droplet pattern was observed. But the surface treated by Er:YAG laser showed irregular and micro porous surface with flake pattern. CO<sub>2</sub> laser treatment of home-bleached surfaces resulted in melting area and cracks. Sodium ascorbate did not change the home-bleached surface.

**Conclusion:** Among different surface treatments used in this study, it seems that Er:YAG laser can best interact with home-bleached teeth.

**Keywords:** Er-YAG laser; Nd-YAG laser; carbon dioxide laser; sodium ascorbate

---

Please cite this article as follows:

Mohammadi Bassir M, Rezvani MB, Chiniforush N, Moradi Z. In Vitro Evaluation of the Effect of Different Laser Irradiations on the Enamel Surfaces of Teeth Treated with Home Bleach Procedure. *J Lasers Med Sci* 2013; 4(4):168-74

\*Corresponding Author: Zohreh Moradi, DDS; Department of Operative Dentistry, School of Dentistry, Shahed University of Medical Sciences, Tehran, Iran. Tel: +98-2188015017; email: zo.moradi@shahed.ac.ir

## Introduction

Vital tooth bleaching procedure is generally used in esthetic dentistry to treat discolored teeth<sup>1</sup>. Following the bleaching process, patients often require additional aesthetic interventions such as the replacement of old restorations and application of laminate veneers to

restore esthetic deficiencies<sup>2</sup>.

There are two techniques for bleaching of vital teeth: in office under the supervision of dentist, or at home, usually with the use of night guards and carbamide peroxide or hydrogen peroxide<sup>3</sup>.

However, a number of studies have shown that the bond strengths of adhesive restorations to tooth

structures are reduced when the tooth has been bleached<sup>1,2,4</sup>. This reduced bond strength tends to normalize after 1 to 4 weeks. Various antioxidant agents have been tested to reverse this effect, such as 10% sodium ascorbate and the catalase enzyme, although they are not yet applicable as routine clinical procedures<sup>5</sup>.

Recently, lasers have been used for different purposes in restorative dentistry like caries removal, surface conditioning, etc<sup>6</sup>.

Considering the ablative effect of the Erbium-Doped Yttrium Aluminum Garnet(Er: YAG) laser on the dental structure as well as the mineralized tissue recrystallization promoted by Neodymium-Doped Yttrium Aluminium Garnet(Nd: YAG), Carbon Dioxide (CO<sub>2</sub>) lasers, it is believed that their use could influence the post bleaching bonding, by promoting substrate heating and causing alterations in enamel and dentin morphology<sup>7</sup>.

The aim of this study was to evaluate and compare the effect of dental surface treatment with Er: YAG, Nd: YAG and CO<sub>2</sub> lasers and sodium ascorbate to recently home bleached enamel by scanning electron microscope (SEM).

## Methods

Thirty extracted human third molars were selected for this in vitro study. The teeth with caries, fractures and hypoplastic lesions were excluded. The remaining tissues were removed by periodontal scaler (Sonic flex 2000, kavo, Biberach, Germany). All teeth were placed in 0.5% chloramine T solution (Chloramin T Trihydrat, Merck schucharat OHG 85662 Hohenbrunn, Germany) for disinfection purpose and then stored in 4°C distilled water until use.

The teeth were randomly divided in two groups including home bleached group and control group (non-bleached).

In group 1, the samples were bleached by home bleach technique. The thin layer of bleaching gel (Day white ACP, Discus Dental, CA, USA) with thickness of 2mm was placed on buccal surface of each tooth in 100% moisture for 15 min. During this process, the teeth were kept in artificial saliva at 37 °C in order to have the buccal surface not in contact with saliva. This procedure was done 1 more time. Then, the samples were kept in 14 ml of artificial saliva. The solution was replaced every day. This bleaching technique was repeated for 3 weeks.

No bleaching procedure was done in the second group which served as control group.

Then, all the samples in the 2 groups were divided to five subgroups as follow:

Subgroup 1: treated using Nd:YAG laser 1064nm wavelength (Fidelis, Fotona, Juhlana, Slovenia) with output power of 1 W, frequency of 10 Hz and pulse duration of 100µs with fiber of 300µm. The irradiation was done 1 mm above the surface.

Subgroup 2: treated using Er:YAG laser 2940nm wavelength (USD20, DEKA Dental laser systems, Florence, Italy) with output power of 0.5 W, frequency of 10 Hz and pulse duration of 230 µs in non-contact mode with distance of 4 mm above the surface

Subgroup 3: treated using CO<sub>2</sub> laser 10600nm wavelength (US-20D, DEKA Dental laser systems, Florence, Italy) with output power of 0.5 W, frequency of 10 Hz and pulse duration of 1.5 ms, non-contact mode with distance of 7 mm above the surface.

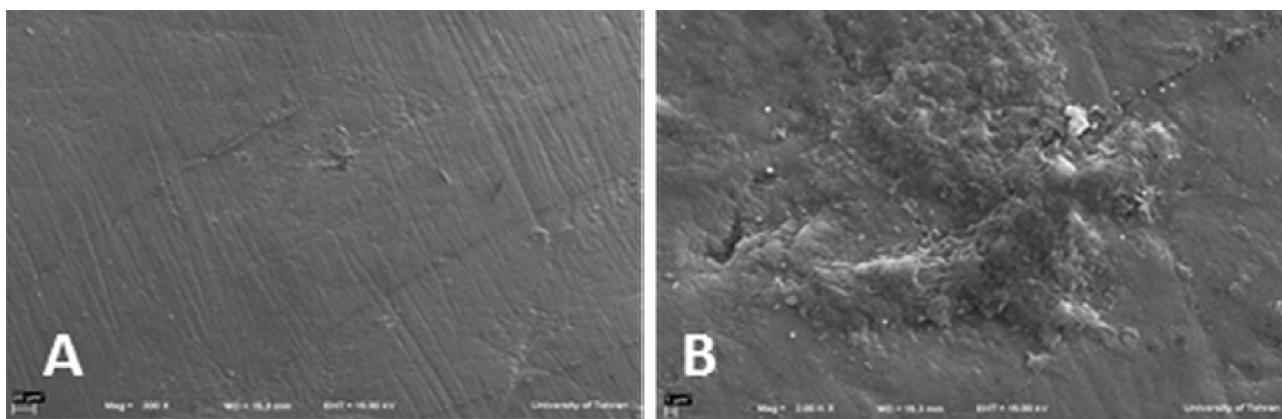
Subgroup 4: sodium ascorbate 10% (Merck Darmstadt, Germany), 10 ml of solution with speed of 1 ml/min was poured on the surface of teeth for 10 min, and then the enamel surface was rinsed with distilled water and dried.

Subgroup 5: no treatment (control group)

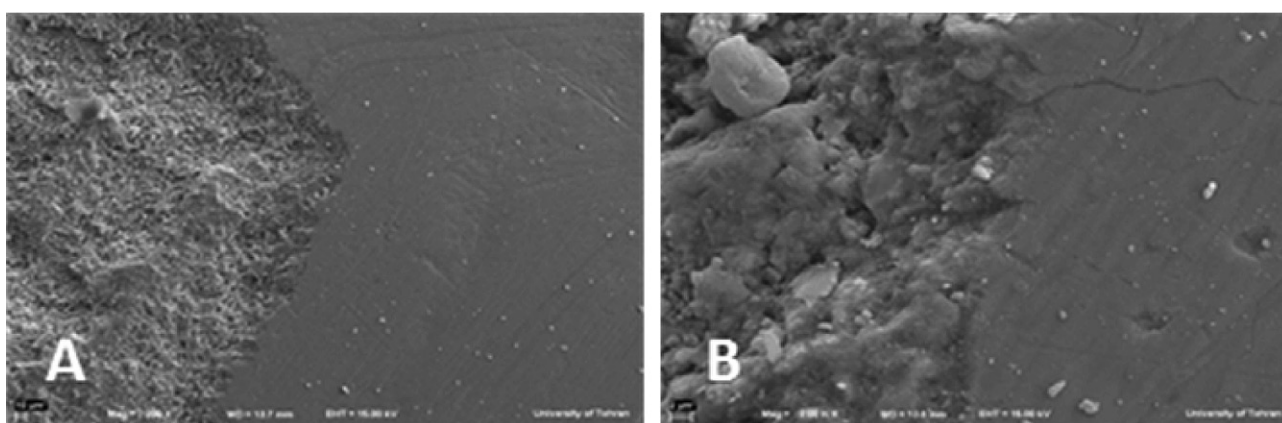
After treatments, the surfaces were evaluated using Scanning Electron Microscope (SEM) (ZEISS DSM-960A, Germany) analysis. Samples were fixed in 2.5% Glutaraldehyde for 12 hours (4°C), and then dehydrated in ascending grades of ethanol (25%, 50%, 75%, 90% and 100%). After that, the samples were dried and sputter-coated with gold. Finally, prepared surfaces were evaluated qualitatively with a scanning electron microscope at ×200 and ×2000 magnification.

## Results

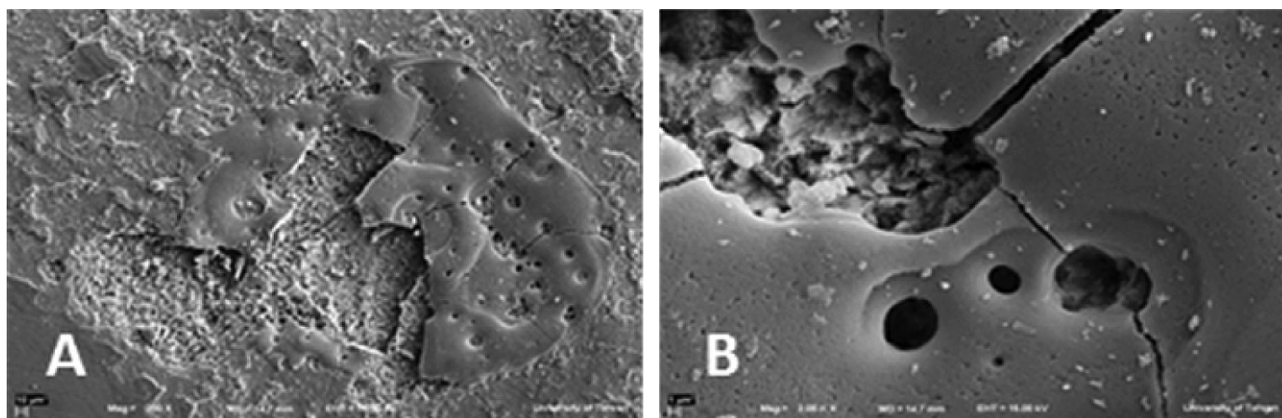
The surfaces treated by Nd:YAG laser showed shiny and opaque macroscopically and some melting and recrystallized areas microscopically and in some area droplet pattern was observed which indicated melting area (Figure 1). But the surface treated by Er:YAG laser showed irregular and micro porous surface with flake pattern (Figure 2). CO<sub>2</sub> laser treatment of home-bleached surfaces resulted in melting area and cracks led to great damage (Figure 3). Also, burst blister parts can be seen due to temperature increase in superficial layer. Sodium ascorbate did not change the home-bleached surface (Figure 4). In bleached teeth with no surface treatment, superficial solubility



**Figure 1.** Home-bleached surface treated by Nd:YAG laser (Original magnification x200(A), x2000(B), bar=10µm)



**Figure 2.** Home-bleached surface treated by Er:YAG laser (Original magnification x200(A), x2000(B), bar=10µm)

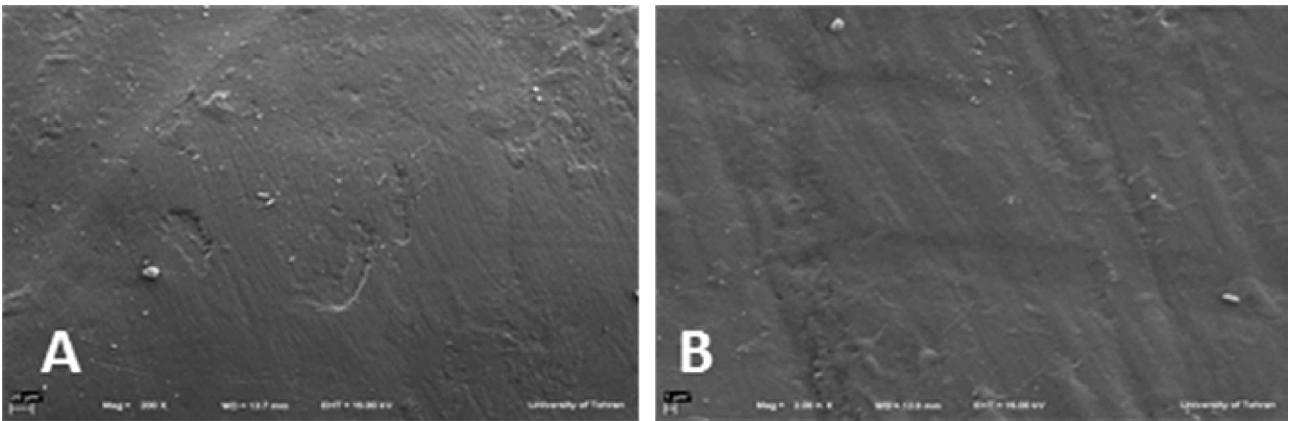


**Figure 3.** Home-bleached surface treated by CO<sub>2</sub> laser (Original magnification x200(A), x2000(B), bar=10µm)

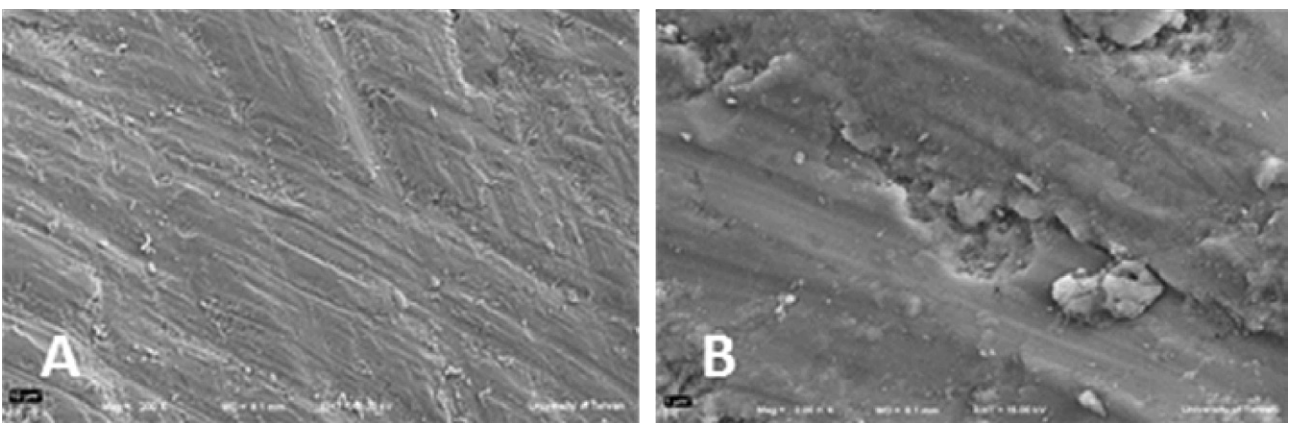
and slight porous surface was seen (Figure 5). In non-bleached teeth, Nd:YAG laser provided melted and recrystallized areas (Figure 6), Er:YAG and CO<sub>2</sub> laser produced surface similar to bleached ones (Figure 7,8) and Ascorbate did not affect the surface of enamel (Figure 9).

### Discussion

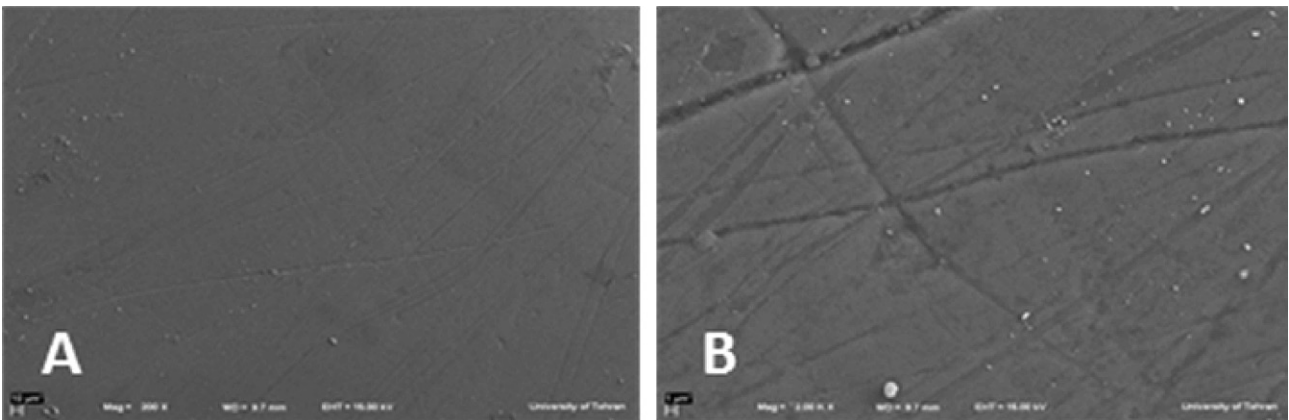
Replacement of restoration after bleaching process is often required. Therefore, reduction of bond strength in enamel after bleaching process is a concerning issue<sup>8,9</sup>. Different modifications can be done to enhance the bond strength. The aim of this study was to evaluate



**Figure 4.** Home-bleached surface treated by ascorbate solution (Original magnification x200(A), x2000(B), bar=10µm)



**Figure 5.** Home-bleached surface with no treatment Original magnification x200(A), x2000(B), bar=10µm)



**Figure 6.** Non-bleached surface treated by Nd:YAG laser (Original magnification x200(A), x2000(B), bar=10µm)

the home-bleached enamel surface treated by Er:YAG, Nd:YAG, CO<sub>2</sub> and Ascorbate by SEM to determine which surface is more suitable to achieve enough bond strength in qualitative manner.

Different studies showed that after home bleaching procedure, the structure of enamel is changed producing

porous surface with loss of prismatic components. Also, other factors such as calcium loss, changes in organic substances and decrease in microhardness are responsible for decrease in bond strength<sup>10-12</sup>.

The mechanism of Er:YAG laser on dental substrate is through absorption of laser energy by water which

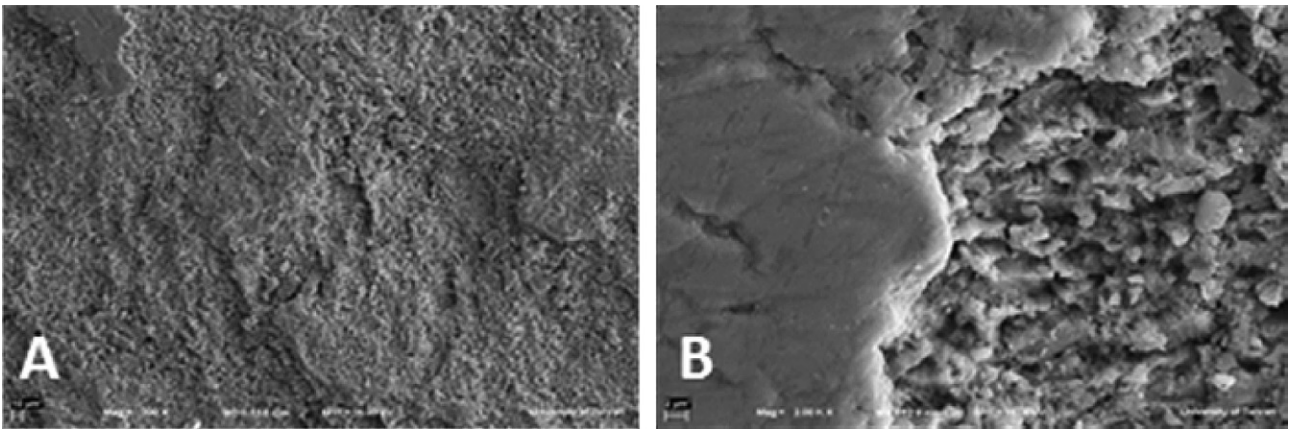


Figure 7. Non-bleached surface treated by Er:YAG laser (Original magnification x200(A), x2000(B), bar=10µm)

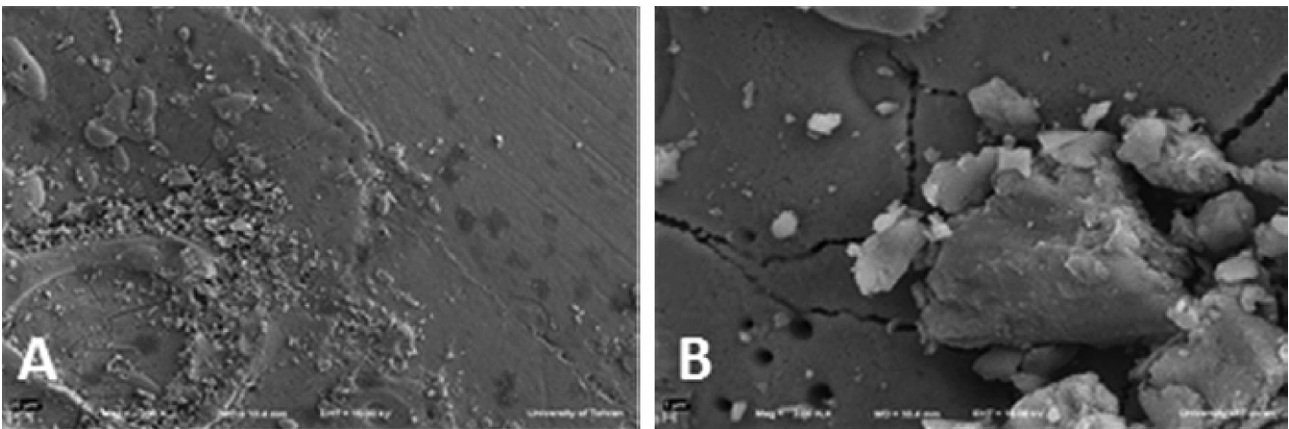


Figure 8. Non-bleached surface treated by CO<sub>2</sub> laser (Original magnification x200(A), x2000(B), bar=10µm)

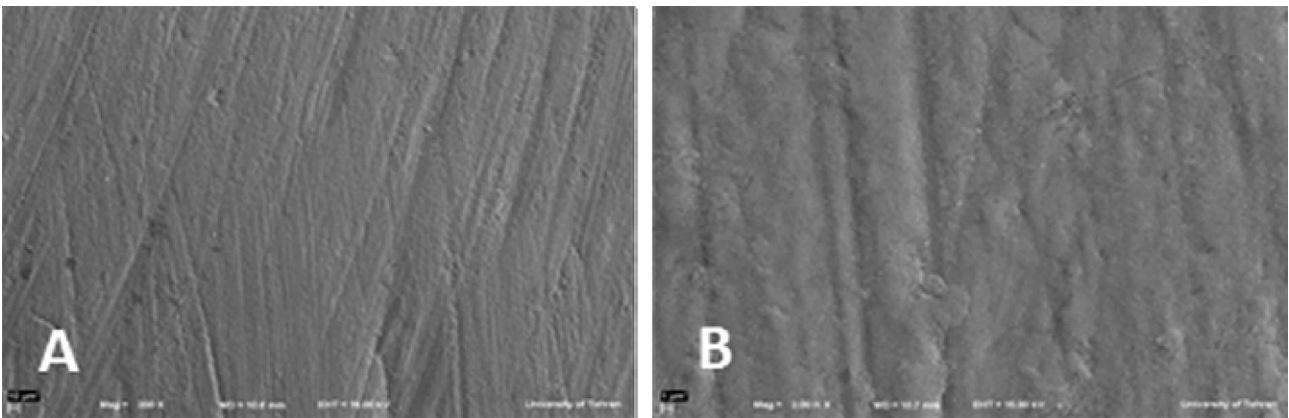
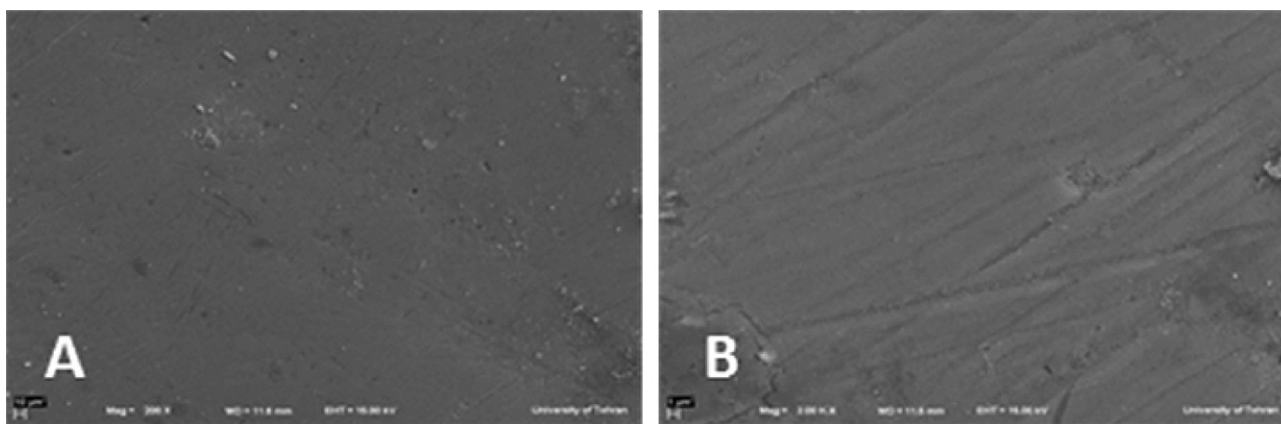


Figure 9. Non-bleached surface treated by ascorbate solution (Original magnification x200(A), x2000(B), bar=10µm)

causes microexplosion and ablation of dental hard tissue<sup>13</sup>. SEM images in Er:YAG laser treated group showed a rough and irregular surface without smear layer production. During these microexplosions, heat produced which can remove the oxygen from surface to enhance the bond strength. Also, Er:YAG laser

irradiation produced etched enamel which is favorable for bonding procedure.

On the other hand, Nd:YAG laser treated group showed melting area due to thermal effects that can eliminate residual oxygen produced by bleaching technique<sup>14</sup>.



**Figure 10.** Non-bleached surface with no treatment Original magnification x200(A), x2000(B), bar=10µm)

Fissure and cracks can be observed in CO<sub>2</sub> laser treated group that can also contribute to heat production on surface of enamel which is beneficial for reduction of residual oxygen but the disadvantages of these cracks on bond strength should be considered<sup>15</sup>.

Sodium ascorbate as a famous antioxidant agent has the ability to remove free radicals of oxygen<sup>16</sup>. The SEM images of this group showed no changes compared to control group.

Further studies are needed to clarify which laser treatment is more appropriate for increasing the bond strength after bleaching procedure.

## Conclusion

Among different surface treatments used in this study, it seems that Er:YAG laser can best interact with home-bleached teeth and provide the suitable substrate for adhesion.

## References

1. Kunt GE, Yilmaz N, SEN S, Dede D. Effect of antioxidant treatment on the shear bond strength of composite resin to bleached enamel. *Acta Odont Scand* 2011; 69(5): 287-91.
2. Gokce B, Comfekoglu ME, Ozpinar B, Turkun M, Kaya AD. Effect of antioxidant treatment on bond strength of a luting resin to bleached enamel. *J Dent* 2008; 36(10): 780-5.
3. Marcondes M, Paranhos MPG, Spohr AM, Mota EG, Da silva INL, Souto AA et al. The influence of the Nd: YAG laser bleaching on physical and mechanical properties of the dental enamel. *J Biomed Mater Res part B: Appl Biomater* 2009; 90(1): 388-95.
4. Barcellos DC, Benetti P, Fernandes Junior VVB, Valera MC. Effect of carbamide peroxide bleaching gel concentration on the bond strength of dental substrates and resin composite. *Oper Dent* 2010; 35(4): 463-9.
5. Torres CRG, Caneppele TMF, Lazari RDM, Ribeiro CF, Borges AB. Effect of dental surface treatment with Nd: YAG and Er: YAG Lasers on bond strength of resin composite to recently bleached enamel. *Lasers Med Sci* 2012; 27 (4): 755-60.
6. Nokhbatolfighahaie H, Chiniforush N, Shahabi S, Monzavi A. SEM evaluation of tooth surface irradiated by different parameters of Er: YAG laser. *J Lasers Med Sci* 2012; 3(2):51-5.
7. Leonetti EDS, Rodrigues JA, Reis AF, Navarro RS, Aranha ACC, Cassoni A. Microtensile bond strength of resin composite to dentin treated with Er: YAG laser of bleached teeth. *Lasers Med Sci* 2010; 27(1): 31-8.
8. Gurgan S, Alpaslan T, Kiremitci A, Cakir Fr, Yazici E, Gorucu J. Effect of different adhesive systems and laser treatment on the shear bond strength of bleached enamel. *J Dent* 2009; 37(7): 527-34.
9. Garcia-Godoy F, Dodge WW, Donohue M, O'quinn JA. Composite resin bond strength after enamel bleaching. *Oper Dent* 1993; 18 (4): 144-7.
10. Sasaki RT, Barbosa MC, Flório FM, Basting RT. Enamel microhardness and shear bond strength after treatment with an 18% carbamide peroxide bleaching varnish. *Am J Dent*. 2007 Oct;20(5):324-8.
11. Adebayo OA, Burrow MF, Tyas MJ. Effects of conditioners on microshear bond strength to enamel after carbamide peroxide bleaching and/or casein phosphopeptide-amorphous calcium phosphate (CPP-ACP) treatment. *J Dent*. 2007 Nov;35(11):862-70.
12. Cavalli V, de Carvalho RM, Giannini M. Influence of carbamide peroxide-based bleaching agents on the bond strength of resin-enamel/dentin interfaces. *Braz Oral Res*. 2005 Jan-Mar;19(1):23-9.
13. Shahabi S, Chiniforush N, Bahramian H, Monzavi A, Baghalian A, Kharazifard MJ. The effect of erbium family laser on tensile bond strength of composite to dentin in comparison with conventional method. *Lasers Med Sci*. 2013 Jan;28(1):139-42. doi: 10.1007/s10103-012-1086-

3. Epub 2012 Apr 11.
14. Fuhrmann R, Gutknecht N, Magunski A, Lampert F, Diedrich P. Conditioning of Enamel with Nd: YAG and CO<sub>2</sub> dental laser systems and with phosphoric acid. *J Orofac Orothop* 2007; 62(5): 345-86.
15. Shahabi S, Chiniforush N, Juybanpoor N. Morphological Changes of Human Dentin after Erbium-Doped Yttrium Aluminum Garnet (Er: YAG) and Carbon Dioxide (CO<sub>2</sub>) Laser Irradiation and Acid-etch Technique: An Scanning Electron Microscopic (SEM) Evaluation. *J Lasers Med Sci* 2013; 4(1):48-52.
16. Dabas D, Patil AC, Uppin VM. Evaluation of the effect of concentration and duration of application of sodium ascorbate hydrogel on the bond strength of composite resin to bleached enamel. *J Conserv Dent* 2011; 14(4): 356-60.