



# A three-field augmented Lagrangian formulation of unilateral contact problems with cohesive forces

David Doyen, Alexandre Ern, Serge Piperno

## ► To cite this version:

David Doyen, Alexandre Ern, Serge Piperno. A three-field augmented Lagrangian formulation of unilateral contact problems with cohesive forces. ESAIM: Mathematical Modelling and Numerical Analysis, EDP Sciences, 2010, 44 (2), pp.323-346. <10.1051/m2an/2010004>. <hal-00349836>

**HAL Id: hal-00349836**

**<https://hal.archives-ouvertes.fr/hal-00349836>**

Submitted on 4 Jan 2009

**HAL** is a multi-disciplinary open access archive for the deposit and dissemination of scientific research documents, whether they are published or not. The documents may come from teaching and research institutions in France or abroad, or from public or private research centers.

L'archive ouverte pluridisciplinaire **HAL**, est destinée au dépôt et à la diffusion de documents scientifiques de niveau recherche, publiés ou non, émanant des établissements d'enseignement et de recherche français ou étrangers, des laboratoires publics ou privés.

## A THREE-FIELD AUGMENTED LAGRANGIAN FORMULATION OF UNILATERAL CONTACT PROBLEMS WITH COHESIVE FORCES\*

DAVID DOYEN<sup>1</sup>, ALEXANDRE ERN<sup>2</sup> AND SERGE PIPERNO<sup>2</sup>

**Abstract.** We investigate unilateral contact problems with cohesive forces, leading to the constrained minimization of a possibly nonconvex functional. We analyze the mathematical structure of the minimization problem. The problem is reformulated in terms of a three-field augmented Lagrangian, and sufficient conditions for the existence of a local saddle-point are derived. Then, we derive and analyze mixed finite element approximations to the stationarity conditions of the three-field augmented Lagrangian. The finite element spaces for the bulk displacement and the Lagrange multiplier must satisfy a discrete inf-sup condition, while discontinuous finite element spaces spanned by nodal basis functions are considered for the unilateral contact variable so as to use collocation methods. Two iterative algorithms are presented and analyzed, namely an Uzawa-type method within a decomposition-coordination approach and a nonsmooth Newton's method. Finally, numerical results illustrating the theoretical analysis are presented.

**1991 Mathematics Subject Classification.** 65N30, 65K10, 74S05, 74M15, 74R99.

January 4, 2009.

### 1. INTRODUCTION

The purpose of this work is to analyze augmented Lagrangian methods for solving static unilateral contact problems with cohesive forces. Problems of this kind arise in fracture mechanics, such as crack initiation and growth in brittle and ductile materials as well as delamination of composite materials [5, 14]. Unilateral contact problems without cohesive forces have been widely studied from both theoretical and numerical standpoints; see, for instance, [16, 20]. They can be formulated as the minimization of a convex functional or, equivalently, as a monotone variational inequality. The presence of cohesive forces in addition to the unilateral contact makes the functional to be minimized possibly nonconvex or, equivalently, the operator in the variational inequality possibly non-monotone. This complicates substantially the problem.

Consider a prototypical unilateral contact problem with cohesive forces, as illustrated in Fig. 1. The domain  $\Omega \subset \mathbb{R}^d$  ( $d = 2$  or  $d = 3$ ) represents a deformable body. The material is assumed to be linear isotropic elastic, with Lamé coefficients  $\lambda$  and  $\mu$ . Let  $u : \Omega \rightarrow \mathbb{R}^d$  be the displacement field. The linearized strain tensor and

---

*Keywords and phrases:* unilateral contact, cohesive forces, augmented Lagrangian, mixed finite elements, decomposition-coordination method, Newton's method

\* *This work was partially supported by EDF R&D. The first author was supported by a CIFRE PhD fellowship.*

<sup>1</sup> EDF R&D, 1 avenue du Général de Gaulle, 92141 Clamart Cedex, France ; e-mail: david.doyen@edf.fr

<sup>2</sup> Université Paris-Est, CERMICS, Ecole des Ponts, 77455 Marne la Vallée Cedex 2, France ; e-mail: {ern, piperno}@cermics.enpc.fr

© EDP Sciences, SMAI 1999

stress tensor,  $\epsilon(u) : \Omega \rightarrow \mathbb{R}^{d,d}$  and  $\sigma(u) : \Omega \rightarrow \mathbb{R}^{d,d}$ , are respectively defined as

$$\epsilon(u) = \frac{1}{2} (\nabla u + \nabla u^T) \quad \text{and} \quad \sigma(u) = \lambda \operatorname{tr} \epsilon(u) I + 2\mu \epsilon(u).$$

An external load  $f$  is applied to the body. The boundary  $\partial\Omega$  is partitioned into three disjoint open subsets  $\partial\Omega_D$ ,  $\partial\Omega_N$ , and  $\Gamma$  (the measure of  $\partial\Omega_D$  is supposed to be positive). An homogeneous Dirichlet condition and a Neumann condition are prescribed on  $\partial\Omega_D$  and  $\partial\Omega_N$ , respectively. The normal load on  $\partial\Omega_N$  is denoted by  $g$ .

On  $\Gamma$ , we impose a unilateral contact condition with cohesive forces. The cohesive forces depend on the displacement on  $\Gamma$ . For the sake of simplicity, we restrict ourselves to a model where the cohesive forces are normal and depend only on the normal displacement. Hence, the cohesive law is a function  $t : \mathbb{R}^+ \rightarrow \mathbb{R}$ , and we define a cohesive energy  $\psi : \mathbb{R}^+ \rightarrow \mathbb{R}$  such that  $\psi' = t$  and, say,  $\psi(0) = 0$ . For later convenience, we extend the domain of  $\psi$  to  $\mathbb{R}$  by setting for  $s \geq 0$ ,  $\psi(-s) = -\psi(s)$ . Let  $n$  be the outward normal to  $\Omega$  and let  $v_\Gamma := v|_\Gamma \cdot n$  and  $\sigma_\Gamma := n \cdot \sigma|_\Gamma \cdot n$  respectively denote the normal displacement and the normal stress on  $\Gamma$ . Then, (i)  $v_\Gamma$  cannot be negative; (ii) if  $v_\Gamma$  is zero,  $\sigma_\Gamma$  must be lower than a yield  $\sigma_c$ ; and (iii) if  $v_\Gamma$  is positive,  $\sigma_\Gamma$  obeys the cohesive law  $\sigma_\Gamma = t(v_\Gamma)$ . There is a large variety of cohesive models. Their common feature is a softening behavior: when the displacement increases, the cohesive force decreases. Consequently, the boundary condition is non-monotone and the cohesive energy is nonconvex. The function  $t$  associated with a Barenblatt model is represented on the right part of Fig. 1.

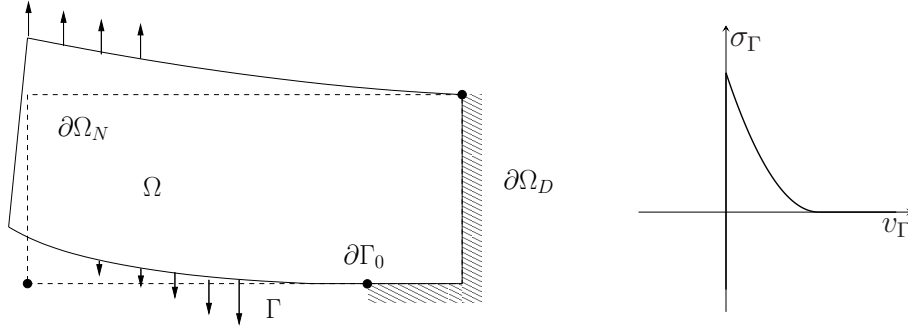


FIGURE 1. Example of unilateral contact problem with cohesive forces.

Let  $V$  and  $H$  be function spaces on  $\Omega$  and  $\Gamma$ , respectively, defined in Section 2 below. Consider the functionals

$$W : V \ni v \mapsto W(v) := \frac{1}{2} \int_{\Omega} \sigma(v) : \epsilon(v) - \int_{\Omega} f \cdot v - \int_{\partial\Omega_N} g \cdot v \in \mathbb{R}, \quad (1)$$

$$\Psi : H \ni q \mapsto \Psi(q) := \int_{\Gamma} \psi(q) \in \mathbb{R}, \quad (2)$$

and the linear operator

$$B : V \ni v \mapsto Bv := v|_\Gamma \cdot n \in H. \quad (3)$$

The unilateral contact problem with cohesive forces can be expressed in the abstract variational form

$$\begin{cases} \min_{v \in V} W(v) + \Psi(Bv) \\ \text{subject to } Bv \in H^+ \end{cases} \quad (4)$$

where  $H^+ := \{q \in H; q \geq 0\}$ .

Problem (4) is a constrained minimization problem. For solving numerically such a problem, the main techniques are penalty methods, feasible direction methods, linear programming methods, and Lagrangian methods. These techniques are thoroughly discussed in [4]. The main drawbacks of the first three methods can be summarized in this way: penalty methods generally yield ill-conditioned problems, feasible direction methods are often expensive due to the projection step, and linear programming methods are limited to linear constraints and quadratic objective functions. In contrast, Lagrangian methods are based on a reformulation of the constrained minimization problem. The new problem consists in seeking a saddle-point (or a stationary point) of a Lagrangian. This can be achieved efficiently by Uzawa algorithms or Newton methods. Uzawa algorithms generally feature good global convergence properties (in the sense that they do not need an initialization value close to the optimum), but their speed of convergence is only linear. Newton methods feature a quadratic speed of convergence, but this is achieved only locally (that is, if the initialization is close to the optimum). Furthermore, augmenting the Lagrangian offers some additional advantages. Whenever the objective function is actually convex, this augmentation improves the performance of the algorithms. In the nonconvex case, the ordinary Lagrangian formulation is not necessarily well-posed and the augmentation enables to recover well-posedness. More details on augmented Lagrangian methods can be found in [3, 4].

In the present work, we analyze two augmented Lagrangian methods for the problem of unilateral contact with cohesive forces: a decomposition-coordination method and a nonsmooth Newton's method. These two methods are based on the same three-field augmented Lagrangian formulation. The decomposition-coordination method has been proposed by Fortin and Glowinski [13] as a general method for solving nonlinear problems. The idea is to solve separately the linear and nonlinear parts of the problem at each iteration. This method can be seen as an Uzawa-like algorithm. It is closely related to the so-called Latin method [23] and also to splitting operator methods. Such methods have been applied to various unilateral contact problems, as for instance in [6, 15]. In the case of a convex functional split into two convex parts, the convergence of the algorithm has been proved in [13]. Furthermore, Newton's method is a standard method for solving nonlinear systems of equations and, as such, can be used to find a stationary point of the augmented Lagrangian. In the case of unilateral constraints, the resulting system is only piecewise continuously differentiable and Newton's method can be extended to this class of nonsmooth systems [27]. Newton's method for unilateral contact problems has been used for instance in [1, 22]. In particular, it has been applied to the problem of unilateral contact with cohesive forces in [25].

This paper is organized as follows. In Section 2, we specify the mathematical structure of the original constrained minimization problem (4) and investigate its well-posedness. In particular, we establish an existence result where the lack of convexity is compensated by a compactness argument. In Section 3, we introduce the three-field augmented Lagrangian formulation and study its well-posedness, namely the existence of a local saddle-point of the augmented Lagrangian. This result is well-known in the convex case [11]. In the nonconvex case, a result is available only in a finite-dimensional setting [3]. Here, we extend this latter approach to the (infinite-dimensional) problem of unilateral contact with cohesive forces, assuming the surjectivity of the operator  $B$  defined by (3) and using a compactness argument in the (closure of the) cone of feasible directions. Sections 2 and 3 are set in a general framework encompassing the particular case of unilateral contact problems with cohesive forces. In Section 4, we analyze mixed finite element approximations of the augmented Lagrangian formulation of unilateral contact problems with cohesive forces. Since a nonlinear problem needs to be solved for the normal displacement on  $\Gamma$ , it is convenient to use a collocation method. In the same way, numerical integration can be employed to build the Jacobian matrix in Newton's method. A key point is the use of discontinuous finite element spaces leading to a collocation method, while ensuring an inf-sup condition which is the discrete counterpart of the surjectivity of the operator  $B$ . The resulting mixed finite element approximation is nonconforming. Numerous works have been devoted to the error analysis of mixed formulations for unilateral contact problems, especially for two-field formulations (bulk displacement-displacement on  $\Gamma$  or bulk displacement-normal stress on  $\Gamma$ ). To our knowledge, the only work dealing with the three-field augmented Lagrangian formulation is [7] in a conforming and consistent case. Here, we prove *a priori* error estimates in the present nonconforming setting for various finite element spaces under the simplifying assumption that the cohesive forces are mild enough. In Section 5, we describe the algorithms. We prove the

convergence of the decomposition-coordination method in the particular case of a convex functional split into a convex part and a nonconvex part. Finally, numerical simulations illustrating the theoretical results are presented in Section 6.

## 2. WELL-POSEDNESS OF THE CONTINUOUS PROBLEM

The main result of this section is the existence of a minimizer for problem (4). The lack of convexity is compensated by a compactness argument. We also specify a sufficient condition for uniqueness based on  $\alpha$ -convexity and give some hints on the regularity of the solution.

We make the following assumptions on the mathematical structure of problem (4).

- (H1)  $V$  and  $H$  are Hilbert spaces and  $B \in \mathcal{L}(V, H)$  (the continuity constant is denoted by  $c_B$ );
- (H2)  $W$  is  $\alpha$ -convex on  $V$  (the  $\alpha$ -convexity constant is denoted by  $\alpha_W$ );
- (H3)  $H^+$  is a nonempty closed convex subset of  $H$ ;
- (H4) There is a Hilbert space  $M \equiv M'$  with scalar product  $(\cdot, \cdot)_M$  such that  $H \hookrightarrow M$  with compact imbedding (the continuity constant of the imbedding is denoted by  $c_M$ ) and  $\Psi : M \rightarrow \mathbb{R}$  is bounded and continuous;
- (H5)  $W$  and  $\Psi$  are continuously differentiable on  $V$  and  $M$  respectively, and  $\Psi'$  is Lipschitz continuous on  $M$  (the Lipschitz constant of  $\Psi'$  is denoted by  $k_{\Psi'}$ ).

Let  $V^+ := \{v \in V; Bv \in H^+\}$ , observe that  $V^+$  is a closed convex subset of  $V$ , and define the functional

$$J : V \ni v \longmapsto J(v) := W(v) + \Psi(Bv) \in \mathbb{R}. \quad (5)$$

Problem (4) can be rewritten as

$$\min_{v \in V^+} J(v). \quad (6)$$

**Theorem 2.1.** *Assume (H1)-(H4). Then, there exists a solution to problem (4).*

*Proof.* Let  $(v_n)_{n \in \mathbb{N}}$  be a minimizing sequence of  $J$  in  $V^+$ . Since the functional  $J$  is coercive ( $W$  is  $\alpha$ -convex and  $\Psi$  is bounded), the sequence  $(v_n)_{n \in \mathbb{N}}$  is bounded in  $V$ . Hence, we can extract a subsequence, still denoted by  $(v_n)_{n \in \mathbb{N}}$ , which converges weakly to  $v_\infty$  in  $V$ . The limit  $v_\infty$  belongs to  $V^+$  since a strongly closed convex set is weakly closed. Moreover, owing to the continuity of  $B$  from  $V$  to  $H$  and the compactness of the imbedding  $H \hookrightarrow M$ , the sequence  $(Bv_n)_{n \in \mathbb{N}}$  strongly converges to  $Bv_\infty$  in  $M$ . Using the continuity of  $\Psi$  on  $M$ , we conclude that  $\lim_{n \rightarrow \infty} \Psi(Bv_n) = \Psi(Bv_\infty)$ . Furthermore, since the functional  $W$  is convex and continuous on  $V$ ,  $\liminf_{n \rightarrow \infty} W(v_n) \geq W(v_\infty)$ . Thus,  $v_\infty \in V^+$  is a global minimizer of  $J$  in  $V^+$ .  $\square$

**Proposition 2.2.** *Assume (H1)-(H5). Then,  $J$  is differentiable on  $V$  so that a solution  $u$  to (4) satisfies*

$$\langle J'(u), v - u \rangle_{V', V} \geq 0, \quad \forall v \in V^+. \quad (7)$$

Furthermore, if

$$\alpha_W - k_{\Psi'} c_M^2 c_B^2 > 0, \quad (8)$$

then  $J$  is  $\alpha$ -convex on  $V$  and the solution to (4) is unique.

*Proof.* The first statement is evident. Concerning the second one, observe that for all  $(v, w) \in V \times V$ ,

$$\begin{aligned} \langle J'(v) - J'(w), v - w \rangle_{V', V} &\geq \langle W'(v) - W'(w), v - w \rangle_{V', V} + \langle \Psi'(Bv) - \Psi'(Bw), Bv - Bw \rangle_M \\ &\geq \alpha_W \|v - w\|_V^2 - k_{\Psi'} \|Bv - Bw\|_M^2 \\ &\geq \alpha_W \|v - w\|_V^2 - k_{\Psi'} c_M^2 \|Bv - Bw\|_H^2 \\ &\geq (\alpha_W - k_{\Psi'} c_M^2 c_B^2) \|v - w\|_V^2, \end{aligned}$$

which proves the  $\alpha$ -convexity of  $J$  under the condition (8), and hence the uniqueness of the solution.  $\square$

**Remark 2.3.** Relation (7) links problem (4) to the theory of variational inequalities. When  $J$  is convex, the operator  $J'$  is monotone. In the general case, the proof of Theorem 2.1 shows that  $J'$  is pseudo-monotone.

We now verify that the unilateral contact problem with cohesive forces defined in the introduction fits the above abstract framework. Recalling the definitions (1)-(3) of  $W$ ,  $\Psi$ , and  $B$ , we also set

$$V := \{v \in H^1(\Omega)^d; v|_{\partial\Omega_D} = 0\}, \quad H := H_{00}^{\frac{1}{2}}(\Gamma, \partial\Gamma_0), \quad M := L^2(\Gamma),$$

where  $\partial\Gamma_0 := \overline{\partial\Omega_D} \cap \bar{\Gamma}$  (see Fig. 1). The space  $H_{00}^{\frac{1}{2}}(\Gamma, \partial\Gamma_0)$  is the space of functions of  $H^{\frac{1}{2}}(\Gamma)$  that are zero in a certain sense on  $\partial\Gamma_0$ . It can be built by interpolation between  $L^2(\Gamma)$  and  $H_0^1(\Gamma, \partial\Gamma_0)$ ; see [24] for more details. Furthermore,  $H^+ := \{q \in H; q \geq 0 \text{ a.e. in } \Gamma\}$  and observe that with the above notation,

$$\Psi(q) = (\psi(q), 1)_M. \quad (9)$$

Finally, for further use, we set  $M^+ = \{q \in M; q \geq 0 \text{ a.e. in } \Gamma\}$ .

**Proposition 2.4.** *Assumptions (H1)-(H3) hold. If  $\psi$  is continuous and bounded on  $\mathbb{R}$ , Assumption (H4) holds. If  $\psi'$  is Lipschitz-continuous on  $\mathbb{R}$  with Lipschitz constant  $k_{\psi'}$ , Assumption (H5) holds with  $k_{\Psi'} = k_{\psi'}$ .*

*Proof.* Assumption (H1) holds by construction. Assumption (H2) is a direct consequence of Korn's first inequality [8]. Assumption (H3) is readily verified. Concerning assumptions (H4) and (H5), we first observe that, by construction,  $H_{00}^{\frac{1}{2}}(\Gamma, \partial\Gamma_0)$  is compactly imbedded in  $L^2(\Gamma)$ . Furthermore, to prove the regularity of  $\Psi$ , we use a basic result of nonlinear analysis [10]; see Lemma 2.5 below. Using this lemma with  $\phi = \psi$ ,  $p = 2$ , and  $q = 1$  along with the boundedness of  $\psi$  to verify condition (10), we infer that  $\mathcal{S}_\psi$  is continuous from  $L^2(\Gamma)$  into  $L^1(\Gamma)$ . Since for all  $q \in L^2(\Gamma)$ ,  $\Psi(q) = (\mathcal{S}_\psi(q), 1)_M$ , the operator  $\Psi$  is continuous on  $M$ . Moreover, since for all  $q, r \in L^2(\Gamma)$ ,

$$\begin{aligned} \Psi(q+r) - \Psi(q) - (\mathcal{S}_{\psi'}(q), r)_M &= \int_{\Gamma} \left( \int_0^1 (\psi'(q(x) + tr(x)) - \psi'(q(x))) dt \right) r(x) dx \\ &\leq \frac{1}{2} k_{\psi'} \int_{\Gamma} |r(x)|^2 dx, \end{aligned}$$

owing to the Lipschitz-continuity of  $\psi'$ ,  $\Psi$  is differentiable on  $M$  with  $(\Psi'(q), r)_M = (\mathcal{S}_{\psi'}(q), r)_M$ . Using Lemma 2.5 with  $\phi = \psi'$  and  $p = q = 2$  along with the Lipschitz-continuity of  $\psi'$  readily shows that  $\Psi'$  is Lipschitz-continuous on  $M$  with Lipschitz constant  $k_{\psi'}$ . Finally, the differentiability of  $W$  is obvious.  $\square$

**Lemma 2.5.** *Let  $\phi : \mathbb{R} \rightarrow \mathbb{R}$  be a continuous function. Consider a measurable function  $q : \Gamma \subset \mathbb{R}^n \rightarrow \mathbb{R}$ . The superposition operator (or Nemitsky operator)  $\mathcal{S}_\phi$  maps  $q$  to  $\phi \circ q$ . If  $q$  and  $r$  are measurable functions that coincide almost everywhere on  $\Gamma$ , then  $\mathcal{S}_\phi(q)$  and  $\mathcal{S}_\phi(r)$  are measurable functions that coincide almost everywhere on  $\Gamma$ . Moreover, if  $\phi$  satisfies the growth condition,*

$$\exists a, b \in \mathbb{R}, \quad \forall x \in \mathbb{R}, \quad |\phi(x)| \leq a + b|x|^{p/q}, \quad (10)$$

*then the superposition operator maps  $L^p(\Gamma)$  into  $L^q(\Gamma)$  and is strongly continuous ( $p, q \in [1; +\infty[$ ).*

**Remark 2.6.** The  $\alpha$ -convexity condition (8) can be interpreted in terms of the problem parameters. The constant  $\alpha_W$  is proportional to the Young modulus of the material. The constant  $k_{\psi'}$  is larger when the cohesive forces decrease fast. By a scaling argument, it can be seen that  $c_{MCB}$  decreases to zero with the  $(d-1)$ -dimensional measure  $|\Gamma|$ . Thus, condition (8) is more likely to be met when the Young modulus is large, the cohesive forces decreases slowly, or  $|\Gamma|$  is small.

A detailed study of the regularity of the solution to the minimization problem (4) is beyond the scope of the present work. However, let us mention some results in particular cases. For a unilateral contact problem without cohesive forces under body forces in  $L^2(\Omega)$ , the displacement is in  $H_{loc}^2(\Omega \cup \Gamma)$  [21]. Furthermore, for a scalar elliptic problem in 2D with unilateral contact and homogeneous Dirichlet condition, the regularity of the solution has been studied near the junction between these boundary conditions [26]. Under body forces in  $L^2(\Omega)$  and for a smooth junction, the solution is in  $H^{\frac{3}{2}}(\Omega)$ . For an angular junction (of internal angle  $\omega$ ), the solution is in  $H^2(\Omega)$  if  $\omega \leq \pi/2$ , and in  $H^{1+\frac{\pi}{2\omega}}(\Omega)$  otherwise.

### 3. A THREE-FIELD AUGMENTED LAGRANGIAN FORMULATION

We introduce a new unknown  $q$  representing the normal displacement on  $\Gamma$ . The decomposed problem is

$$\begin{cases} \min_{(v,q) \in V \times H^+} W(v) + \Psi(q) \\ \text{subject to } Bv = q \end{cases} \quad (11)$$

The decomposed problem (11), which is obviously equivalent to the initial minimization problem (4), is a minimization problem under a linear equality constraint. We treat this constraint by an augmented Lagrangian method. Introduce the space  $Y := V \times H$  (equipped with its natural norm) and the convex set  $K := V \times H^+$ . Define

$$\begin{aligned} J_0 : Y \ni y := (v, q) &\longmapsto J_0(y) := W(v) + \Psi(q) \in \mathbb{R}, \\ \tilde{B} : Y \ni y := (v, q) &\longmapsto \tilde{B}y := Bv - q \in H, \end{aligned}$$

so that (11) amounts to

$$\min_{y \in K \cap \ker \tilde{B}} J_0(y). \quad (12)$$

The augmented Lagrangian associated with the decomposed problem is

$$L_r : Y \times H' \ni (y, \lambda) \longmapsto L_r(y, \lambda) := J_0(y) + \langle \lambda, \tilde{B}y \rangle_{H', H} + \frac{r}{2} \|\tilde{B}y\|_M^2 \in \mathbb{R}, \quad (13)$$

where  $r$  is an arbitrary non-negative constant. For  $y \in Y$ , set

$$J_r(y) := J_0(y) + \frac{r}{2} \|\tilde{B}y\|_M^2. \quad (14)$$

A couple  $(x, \theta) \in K \times H'$  is said to be a local saddle-point of the augmented Lagrangian if it satisfies

$$\forall \lambda \in H', \quad L_r(x, \lambda) \leq L_r(x, \theta) \leq L_r(y, \theta), \quad \forall y \in U, \quad (15)$$

where  $U \subset K$  is a neighborhood of  $x$ . The introduction of the augmented Lagrangian is motivated by the following proposition whose proof is straightforward.

**Proposition 3.1.** *If  $(x, \theta) \in K \times H'$  is a local saddle-point of the augmented Lagrangian, then  $x$  is a local minimizer of the decomposed problem (11).*

The converse of this statement is more difficult to establish. We first prove, under the key assumption that  $B$  is surjective from  $V$  to  $H$ , that if  $x \in K \cap \ker \tilde{B}$  is a local minimizer of  $J_0$ , there is (a unique)  $\theta \in H'$  such that  $(x, \theta)$  is a stationary point of the augmented Lagrangian  $L_r$ . Then, we prove, under an additional assumption,

that such a stationary point is a local saddle-point of  $L_r$ . A couple  $(x, \theta) \in K \times H'$  is said to be a stationary point of  $L_r$  if it satisfies

$$\langle \partial_y L_r(x, \theta), y - x \rangle_{Y', Y} \equiv \langle J'_r(x), y - x \rangle_{Y', Y} + \langle \theta, \tilde{B}(y - x) \rangle_{H', H} \geq 0, \quad \forall y \in K, \quad (16)$$

$$\langle \partial_\lambda L_r(x, \theta), \lambda \rangle_{H, H'} \equiv \langle \lambda, \tilde{B}x \rangle_{H', H} = 0, \quad \forall \lambda \in H'. \quad (17)$$

Observe that being a stationary point of the augmented Lagrangian is a property independent of  $r$  since (17) implies  $\tilde{B}x = 0$  so that  $J'_r(x) = J'_0(x)$ . Notice also that (16) can be rewritten for  $x := (u, p)$  as

$$\langle W'(u), v \rangle_{V', V} + \langle \theta, Bv \rangle_{H', H} = 0, \quad \forall v \in V, \quad (18)$$

$$\langle \psi'(p), q - p \rangle_M - \langle \theta, q - p \rangle_{H', H} \geq 0, \quad \forall q \in H^+. \quad (19)$$

**Proposition 3.2.** *Let  $x \in K \cap \ker \tilde{B}$  be a local minimizer of the decomposed problem (11). If  $B$  is surjective from  $V$  to  $H$ , there exists a unique  $\theta \in H'$  such that  $(x, \theta)$  is a stationary point of the augmented Lagrangian.*

*Proof.* Let  $x \in K \cap \ker \tilde{B}$  be a local minimizer of the decomposed problem. Then,  $\tilde{B}x = 0$  and (17) obviously holds. Let us now prove (16). For all  $r \geq 0$ ,  $x$  minimizes  $J_r$  over  $K \cap \ker \tilde{B}$  and hence it satisfies

$$\langle J'_r(x), y - x \rangle_{Y', Y} \geq 0, \quad \forall y \in K \cap \ker \tilde{B}.$$

For all  $v \in \ker B$ ,  $y := x + (v, 0)$  belongs to  $K \cap \ker \tilde{B}$  so that  $\langle J'_r(x), (v, 0) \rangle_{Y', Y} = 0$ . Since  $B$  is surjective,  $(\ker B)^\perp = \text{im } B^*$  by the closed range theorem. As a consequence, there exists  $\theta \in H'$  such that

$$\langle J'_r(x), (v, 0) \rangle_{Y', Y} + \langle \theta, Bv \rangle_{H', H} = 0, \quad \forall v \in V.$$

Since  $J'_r(x) = J'_0(x)$ ,  $\theta$  does not depend on  $r$ . Now let  $y := (v, q) \in K$  and let  $w \in V$  be such that  $Bw = q$ . Then,

$$\begin{aligned} \langle J'_r(x), y - x \rangle_{Y', Y} + \langle \theta, \tilde{B}(y - x) \rangle_{H', H} &= \langle J'_r(x), y - x \rangle_{Y', Y} + \langle \theta, B(v - w) \rangle_{H', H} \\ &= \langle J'_r(x), (w, q) - x \rangle_{Y', Y} \geq 0, \end{aligned}$$

since  $(w, q)$  is by construction in  $K \cap \ker \tilde{B}$ . Hence, (16) also holds. Finally, the relation  $\langle J'_r(x), (v, 0) \rangle_{Y', Y} + \langle \theta, Bv \rangle_{H', H} = 0$  for all  $v \in V$  and the surjectivity of  $B$  from  $V$  to  $H$  imply that  $\theta$  is unique.  $\square$

**Remark 3.3.** In the context of unilateral contact problems, the Lagrange multiplier  $\theta$  can be interpreted as the normal stress on  $\Gamma$ , namely  $\theta = \sigma(u)|_\Gamma$  where  $x := (u, u|_\Gamma)$ . This results from the relation (16).

**Remark 3.4.** A more general existence result for mixed linear variational inequalities can be found in [28].

We now examine whether a stationary point of the augmented Lagrangian is a local saddle-point. The cone of feasible directions at the point  $x := (u, p) \in K$  can be defined as  $(V \times C_+(x)) \cap \ker \tilde{B}$  where

$$C_+(x) := \{d \in H; \exists \alpha > 0, p + \alpha d \in H^+\}. \quad (20)$$

**Proposition 3.5.** *Assume that  $W$  and  $\Psi$  are of class  $C^2$ . Let  $(x, \theta) \in K \times H'$  be a stationary point of the augmented Lagrangian. Assume that  $(x, \theta)$  satisfies the following second-order condition (indices on brackets are dropped for second-order derivatives)*

$$\langle J''_0(x), (d, d) \rangle > 0, \quad \forall d \in (V \times \overline{C_+(x)}) \cap \ker \tilde{B} \setminus \{0\}. \quad (21)$$

*Then, there exists  $r_0 \geq 0$  such that  $(x, \theta)$  is a local saddle-point of the augmented Lagrangian  $L_{r_0}$ . Furthermore, for all  $r \geq r_0$ ,  $(x, \theta)$  is a local saddle-point of the augmented Lagrangian  $L_r$ .*



*Proof.* The left inequality in (15) is obvious for all  $r \geq 0$ . If the right inequality holds for  $r_0 \geq 0$ , then it holds also for  $r \geq r_0$ . Now we shall prove by contradiction that there exist  $r_0 \geq 0$  and a neighborhood  $U$  of  $x$  such that  $L_r(x, \theta) \leq L_r(y, \theta)$ ,  $\forall y \in U$ ,  $\forall r \geq r_0$ . Suppose there exists a sequence of positive reals  $(r_k)_{k \in \mathbb{N}}$  tending to infinity and a sequence  $(x_k)_{k \in \mathbb{N}}$  of elements of  $K$  tending to  $x$  such that

$$L_{r_k}(x_k, \theta) \leq L_{r_k}(x, \theta). \quad (22)$$

Consider the sequence  $(e_k)_{k \in \mathbb{N}}$  such that  $e_k := (e_k^v, e_k^q) := \alpha_k^{-1}(x_k - x)$  where  $\alpha_k := \|x_k - x\|_Y$ . Since this sequence is bounded in  $Y$ , there exists a subsequence, still denoted by  $(e_k)_{k \in \mathbb{N}}$ , weakly converging to  $e := (e^v, e^q)$  in  $Y$ . To obtain a contradiction, we shall now prove that  $e \in (V \times \overline{C_+(x)}) \cap \ker \tilde{B}$  and that  $\langle J_0''(x), (e, e) \rangle \leq 0$ . A second-order Taylor expansion of  $L_0(\cdot, \theta)$  at  $x$  in the  $Y$ -norm yields

$$L_0(x_k, \theta) = L_0(x, \theta) + \langle \partial_y L_0(x, \theta), x_k - x \rangle_{Y', Y} + \frac{1}{2} \langle J_0''(x), (x_k - x, x_k - x) \rangle + o(\alpha_k^2).$$

Since  $x_k = x + \alpha_k e + \alpha_k(e_k - e)$ ,

$$\begin{aligned} L_0(x_k, \theta) &= L_0(x, \theta) + \langle \partial_y L_0(x, \theta), x_k - x \rangle_{Y', Y} + \alpha_k^2 \langle J_0''(x), (e_k - e, e) \rangle \\ &\quad + \frac{\alpha_k^2}{2} \langle J_0''(x), (e, e) \rangle + \frac{\alpha_k^2}{2} \langle J_0''(x), (e_k - e, e_k - e) \rangle + o(\alpha_k^2). \end{aligned} \quad (23)$$

Since  $(x, \theta)$  is a stationary point of the augmented Lagrangian,  $\langle \partial_y L_0(x, \theta), x_k - x \rangle_{Y', Y} \geq 0$ . Now observe that  $\tilde{B}x_k = \tilde{B}x + \alpha_k \tilde{B}e_k = \alpha_k \tilde{B}e_k$ . Hence, substituting (23) into (22), it is inferred that

$$\alpha_k^2 \langle J_0''(x), (e_k - e, e) \rangle + \frac{\alpha_k^2}{2} \langle J_0''(x), (e, e) \rangle + \frac{\alpha_k^2}{2} \langle J_0''(x), (e_k - e, e_k - e) \rangle + \frac{r_k}{2} \alpha_k^2 \|\tilde{B}e_k\|_M^2 + o(\alpha_k^2) \leq 0. \quad (24)$$

Since the sequence  $(e_k)_{k \in \mathbb{N}}$  converges weakly to  $e$  in  $Y$ ,  $\langle J_0''(x), (e_k - e, e) \rangle$  tends to 0. By convexity  $\langle W''(x), (e_k^v - e^v, e_k^q - e^q) \rangle \geq 0$  and by compactness,  $e_k^q$  tends to  $e^q$  in  $M$  so that  $\langle \Psi''(x), (e_k^q - e^q, e_k^q - e^q) \rangle$  tends to 0. Hence,  $\liminf_k \langle J_0''(x), (e_k - e, e_k - e) \rangle \geq 0$ . By compactness, the sequence  $(\tilde{B}e_k)_{k \in \mathbb{N}}$  converges strongly to  $\tilde{B}e$  in  $M$ . Dividing (24) by  $\alpha_k^2 r_k$  and passing to the limit, we obtain  $\|\tilde{B}e\|_M^2 \leq 0$  and thus  $e \in \ker \tilde{B}$ . Moreover, since  $x_k = x + \alpha_k e_k$ , it is clear that for all  $k \geq 0$ ,  $e_k^q \in C_+(x)$ . Observing that  $C_+(x)$  is convex, it is inferred that  $e^q \in \overline{C_+(x)}$ . Hence,  $e \in (V \times \overline{C_+(x)}) \cap \ker \tilde{B}$ ; furthermore, by construction,  $e \neq 0$ . Finally, dividing (24) by  $\alpha_k^2$ , dropping the positive terms, and passing to the limit leads to  $\langle J_0''(x), (e, e) \rangle \leq 0$ .  $\square$

#### 4. APPROXIMATION BY MIXED FINITE ELEMENTS

In this section, we discretize the augmented Lagrangian formulation of unilateral contact problems with cohesive forces by a Galerkin method with finite element spaces. The augmented Lagrangian formulation is a three-field formulation: the bulk displacement, the normal displacement on  $\Gamma$ , and the Lagrange multiplier (which can be interpreted as the normal stress on  $\Gamma$ ). The two key ideas in the design of the mixed finite element approximation are the following. Firstly, we want to solve the nonlinear part of the problem concerning the normal displacement on  $\Gamma$  by a collocation method. This leads to the use of discontinuous finite element spaces spanned by nodal basis functions for approximating this quantity. Secondly, a surjectivity condition in the form of a discrete inf-sup condition must be satisfied, linking the discrete spaces for the bulk displacement and the Lagrange multiplier. In the sequel, we refer to a 3D/2D setting when  $\Omega$  is 3D and  $\Gamma$  is 2D, and to a 2D/1D setting when  $\Omega$  is 2D and  $\Gamma$  is 1D.

##### 4.1. The discrete setting

Let  $\{\mathcal{T}_h\}_{h>0}$  be a shape-regular family of affine meshes covering exactly  $\Omega$ , where the parameter  $h$  stands for the maximum size of the elements in  $\mathcal{T}_h$ . Without loss of generality, we assume  $h \leq 1$ . Let  $\mathcal{F}_h$  collect the mesh

faces located on  $\Gamma$ . To alleviate technicalities, the mesh family  $\{\mathcal{F}_h\}_{h>0}$  is assumed to be quasi-uniform on  $\Gamma$ , but this assumption can be relaxed. Let  $V_h$ ,  $M_h$ , and  $\Lambda_h$  respectively denote the finite element approximation spaces for the bulk displacement, the normal displacement on  $\Gamma$ , and the Lagrange multiplier. Henceforth, we assume that

$$V_h \subset V, \quad \text{and} \quad \Lambda_h \subset M_h \subset M. \quad (25)$$

Thus, the approximation is conforming for the bulk displacement and the Lagrange multiplier, but not for the normal displacement on  $\Gamma$  since in general  $M_h \not\subset H$ . In fact, motivated by the use of a collocation method, we will choose  $M_h$  as a discontinuous finite element space spanned by nodal basis functions; see Remark 4.6 below for further insight. Let  $\Pi_{\Lambda_h}$  denote the  $L^2$ -orthogonal projection from  $M$  onto  $\Lambda_h$  and define the operator

$$B_h : V \ni v \mapsto B_h v := \Pi_{\Lambda_h} B v \in \Lambda_h. \quad (26)$$

The choice for the spaces  $V_h$  and  $\Lambda_h$  is linked by the following discrete inf-sup condition

$$\exists \beta_h > 0, \quad \forall \lambda_h \in \Lambda_h, \quad \beta_h h^{1/2} \|\lambda_h\|_M \leq \sup_{v_h \in V_h} \frac{(B_h v_h, \lambda_h)_M}{\|v_h\|_V}. \quad (27)$$

This means that the restriction of the operator  $B_h$  to  $V_h$  is surjective onto  $\Lambda_h$ . Henceforth, we assume that this condition holds.

**Remark 4.1.** The scaling factor  $h^{1/2}$  has been introduced since the natural norm for  $\lambda_h$  is the  $H^{-\frac{1}{2}}$ -norm.

Consider the following finite element spaces

$$\mathcal{P}_c^k(\mathcal{T}_h) = \{v_h \in C^0(\Omega); \forall T \in \mathcal{T}_h, v_h|_T \in \mathbb{P}_k\}, \quad (28)$$

$$\mathcal{P}_d^k(\mathcal{F}_h) = \{q_h \in L^2(\Gamma); \forall F \in \mathcal{F}_h, q_h|_F \in \mathbb{P}_k\}, \quad \mathcal{P}_c^k(\mathcal{F}_h) = \mathcal{P}_d^k(\mathcal{F}_h) \cap C^0(\Gamma), \quad (29)$$

where for an integer  $k$ ,  $\mathbb{P}_k$  denotes the space of polynomials with total degree  $\leq k$ . We are interested in analyzing the following situations

$$M_h = \mathcal{P}_d^0(\mathcal{F}_h), \quad \Lambda_h = M_h, \quad V_h \supset \mathcal{P}_c^1(\mathcal{T}_h)^d, \quad (30)$$

$$M_h = \mathcal{P}_d^1(\mathcal{F}_h), \quad \Lambda_h = M_h, \quad V_h \supset \mathcal{P}_c^2(\mathcal{T}_h)^d, \quad (31)$$

$$M_h = \mathcal{P}_d^1(\mathcal{F}_h), \quad \Lambda_h = \mathcal{P}_c^1(\mathcal{F}_h), \quad V_h = \mathcal{P}_c^2(\mathcal{T}_h)^d. \quad (32)$$

In (30) and (31), the most robust choice is to take for  $V_h$ , respectively, the continuous first-order and second-order finite element spaces augmented with suitable face bubbles on  $\Gamma$ , leading to an inf-sup constant  $\beta_h$  in (27) *independent of  $h$*  in both 2D/1D and 3D/2D settings; see [2, 17]. In 2D/1D whenever at least one of the endpoints of  $\Gamma$  is free, it is also possible to take  $V_h = \mathcal{P}_c^1(\mathcal{T}_h)^d$  in (30) or  $V_h = \mathcal{P}_c^2(\mathcal{T}_h)^d$  in (31); then, the discrete inf-sup condition (27) still holds, but the constant  $\beta_h$  is of order  $h$ . The choice (32) has been introduced in [25] and differs from the two previous choices in the fact that  $\Lambda_h \neq M_h$ . The idea is to avoid the use of face bubbles on  $\Gamma$  by simply taking  $V_h = \mathcal{P}_c^2(\mathcal{T}_h)^d$ , to ensure a robust discrete inf-sup condition (with  $\beta_h$  independent of  $h$ ) by restricting  $\Lambda_h$  to  $\mathcal{P}_c^1(\mathcal{F}_h)$ , and to keep  $M_h$  as a discontinuous finite element space to be able to use a collocation method.

In all cases resulting from (30)–(32), there holds  $M_h = \mathcal{P}_d^k(\mathcal{F}_h)$  with  $k \in \{0, 1\}$ , and it is readily verified that there is a family of nodes  $(\xi_i^F)_{1 \leq i \leq n_q, F \in \mathcal{F}_h}$  such that

- the associated shape functions form a basis of  $M_h$  (in 2D/1D,  $n_q = k + 1$  and the usual Gauss nodes are used; in 3D/2D, if  $k = 0$ ,  $n_q = 1$  and the barycenter of each  $F \in \mathcal{F}_h$  is used, while if  $k = 1$ ,  $n_q = 3$  and the midpoints of the three edges of each  $F \in \mathcal{F}_h$  are used);

- there are *positive* weights  $(\omega_i^F)_{1 \leq i \leq n_q, F \in \mathcal{F}_h}$  such that for all  $q_h, r_h \in M_h$ ,

$$(q_h, r_h)_M = \sum_{F \in \mathcal{F}_h} \sum_{i=1}^{n_q} \omega_i^F q_h(\xi_i^F) r_h(\xi_i^F). \quad (33)$$

In other words, on all  $F \in \mathcal{F}_h$ , the quadrature with nodes  $(\xi_i^F)_{1 \leq i \leq n_q}$  and weights  $(\omega_i^F)_{1 \leq i \leq n_q}$  is at least of degree  $2k$ . For further use, it is convenient to define the bilinear form

$$\mathbb{C}^0(\mathcal{F}_h) \times \mathbb{C}^0(\mathcal{F}_h) \ni (q_h, r_h) \longmapsto (q_h, r_h)_{M_h} := \sum_{F \in \mathcal{F}_h} \sum_{i=1}^{n_q} \omega_i^F q_h(\xi_i^F) r_h(\xi_i^F) \in \mathbb{R}, \quad (34)$$

where  $\mathbb{C}^0(\mathcal{F}_h)$  denotes the space of functions whose restriction to every  $F \in \mathcal{F}_h$  is continuous.

#### 4.2. The discrete augmented Lagrangian formulation

Set  $Y_h = V_h \times M_h$  and  $K_h = V_h \times M_h^+$  where

$$M_h^+ := \{q_h \in M_h; \forall F \in \mathcal{F}_h, \forall 1 \leq i \leq n_q, q_h(\xi_i^F) \geq 0\}. \quad (35)$$

Observe that  $M_h^+ \subset M^+$  if  $k = 0$  (that is, functions in  $M_h^+$  are indeed non-negative), whereas this is no longer the case if  $k = 1$ , thereby introducing an additional source of nonconformity in the approximation. Let

$$\tilde{B}_h : Y_h \ni y_h := (v_h, q_h) \longmapsto \tilde{B}_h y_h := \Pi_{\Lambda_h}(Bv_h - q_h) \in \Lambda_h. \quad (36)$$

Whenever  $\Lambda_h \neq M_h$ , we will also need the operator

$$\tilde{B}_h^\# : Y_h \ni y_h := (v_h, q_h) \longmapsto \tilde{B}_h^\# y_h := \Pi_{M_h} Bv_h - q_h \in M_h, \quad (37)$$

where  $\Pi_{M_h}$  denotes the  $L^2$ -orthogonal projection from  $M$  onto  $M_h$ . We define the discrete augmented Lagrangian as

$$L_{r,h} : Y_h \times \Lambda_h \ni (y_h, \lambda_h) \longmapsto L_{r,h}(y_h, \lambda_h) := J_{0,h}(y_h) + (\lambda_h, \tilde{B}_h y_h)_M + \frac{r}{2} \|\tilde{B}_h^\# y_h\|_M^2 \in \mathbb{R}, \quad (38)$$

where  $r$  is a non-negative parameter. Here, for  $y_h := (v_h, q_h) \in Y_h$ ,

$$J_{0,h}(y_h) := W(v_h) + (\psi(q_h), 1)_{M_h}, \quad (39)$$

that is, the energy associated with the cohesive forces is evaluated using a quadrature, and it is convenient to set

$$J_{r,h}(y_h) := J_{0,h}(y_h) + \frac{r}{2} \|\tilde{B}_h^\# y_h\|_M^2. \quad (40)$$

Observe that the penalty term in (38) and in (40) is stronger than the usual penalty term associated with the constraint  $\tilde{B}_h y_h = 0$  in  $\Lambda_h$ ; indeed, owing to the fact that  $\Lambda_h \subset M_h$ , there holds

$$\forall y_h \in Y_h, \quad \|\tilde{B}_h y_h\|_M \leq \|\tilde{B}_h^\# y_h\|_M. \quad (41)$$

The discrete decomposed problem takes the following form

$$\min_{y_h \in K_h \cap \ker \tilde{B}_h} J_{r,h}(y_h). \quad (42)$$

**Proposition 4.2.** *There exists a solution to the discrete decomposed problem (42).*

*Proof.* The functional  $J_{r,h}$  is coercive and continuous, and the set  $K_h \cap \ker \tilde{B}_h$  is nonempty and closed. In finite dimension, this suffices for the existence of a global minimizer.  $\square$

We now investigate sufficient conditions for the functional  $J_{r,h}$  to be  $\alpha$ -convex over  $K_h \cap \ker \tilde{B}_h$  (and thus the solution of (42) to be unique). Since we are working in a nonconforming framework ( $M_h \subset M$ , but  $M_h \not\subset H$ ), it is convenient to equip  $Y_h \subset Z := V \times M$  with the natural norm of  $Z$  and to formulate duality products using  $Z$ . We first treat the simpler case  $\Lambda_h = M_h$ .

**Proposition 4.3.** *Assume  $\alpha_W - k_{\psi'} c_M^2 c_B^2 > 0$  and  $\Lambda_h = M_h$ . Then, the functional  $J_{r,h}$  is  $\alpha$ -convex on  $K_h \cap \ker \tilde{B}_h$ , namely there is  $\alpha > 0$  such that for all  $r \geq 0$ ,*

$$\forall y_h, z_h \in K_h \cap \ker \tilde{B}_h, \quad \langle J'_{r,h}(y_h) - J'_{r,h}(z_h), y_h - z_h \rangle_{Z',Z} \geq \alpha \|y_h - z_h\|_Z^2. \quad (43)$$

*Proof.* Let  $y_h, z_h \in K_h \cap \ker \tilde{B}_h$  with  $y_h := (v_h, q_h)$  and  $z_h := (w_h, r_h)$ . Set  $A = \langle J'_{r,h}(y_h) - J'_{r,h}(z_h), y_h - z_h \rangle_{Z',Z}$ . Since  $\Lambda_h = M_h$ , the penalty term in (40) vanishes for  $y_h, z_h \in \ker \tilde{B}_h$ . As a result,

$$\begin{aligned} A &= \langle W'(v_h) - W'(w_h), v_h - w_h \rangle_{V',V} + \langle \psi'(q_h) - \psi'(r_h), q_h - r_h \rangle_{M_h} \\ &\geq \alpha_W \|v_h - w_h\|_V^2 - k_{\psi'} \sum_{F \in \mathcal{F}_h} \sum_{i=1}^{n_q} \omega_i^F (q_h(\xi_i^F) - r_h(\xi_i^F))^2, \end{aligned}$$

where we have used the  $\alpha$ -convexity of  $W$ , the Lipschitz-continuity of  $\psi'$ , and the fact that the weights  $\omega_i^F$  are positive. Moreover, since the quadrature is at least of degree  $2k$ , since  $\Pi_{\Lambda_h} B(v_h - w_h) = q_h - r_h$  by assumption, and owing to the conformity of  $V_h$ , it is inferred that

$$\begin{aligned} A &\geq \alpha_W \|v_h - w_h\|_V^2 - k_{\psi'} \|q_h - r_h\|_M^2 \\ &= \alpha_W \|v_h - w_h\|_V^2 - k_{\psi'} \|\Pi_{\Lambda_h} B(v_h - w_h)\|_M^2 \\ &\geq \alpha_W \|v_h - w_h\|_V^2 - k_{\psi'} \|B(v_h - w_h)\|_M^2 \\ &\geq (\alpha_W - k_{\psi'} c_M^2 c_B^2) \|v_h - w_h\|_V^2, \end{aligned}$$

whence the conclusion readily follows since  $\|q_h - r_h\|_M \leq c_M c_B \|v_h - w_h\|_V$ .  $\square$

**Proposition 4.4.** *Assume  $\alpha_W - 2k_{\psi'} c_M^2 c_B^2 > 0$ . Then, (43) still holds if  $r > 4k_{\psi'}$ , and if  $h$  is small enough.*

*Proof.* Proceeding as above leads to

$$\begin{aligned} A &\geq \alpha_W \|v_h - w_h\|_V^2 - k_{\psi'} \|q_h - r_h\|_M^2 + r \|\tilde{B}_h^\sharp(y_h - z_h)\|_M^2 \\ &\geq \alpha_W \|v_h - w_h\|_V^2 - 2k_{\psi'} \|\Pi_{\Lambda_h} B(v_h - w_h)\|_M^2 - 2k_{\psi'} \|(I - \Pi_{\Lambda_h})(q_h - r_h)\|_M^2 + r \|\tilde{B}_h^\sharp(y_h - z_h)\|_M^2 \\ &= (\alpha_W - 2k_{\psi'} c_M^2 c_B^2) \|v_h - w_h\|_V^2 - 2k_{\psi'} \|(I - \Pi_{\Lambda_h})(q_h - r_h)\|_M^2 + r \|\Pi_{M_h} B(v_h - w_h) - (q_h - r_h)\|_M^2, \end{aligned}$$

since  $\Pi_{\Lambda_h} B(v_h - w_h) = \Pi_{\Lambda_h} (q_h - r_h)$ . The last term in the right-hand side can be transformed into

$$\begin{aligned} \|\Pi_{M_h} B(v_h - w_h) - (q_h - r_h)\|_M^2 &= \|\Pi_{M_h} B(v_h - w_h) - \Pi_{\Lambda_h} B(v_h - w_h) - (I - \Pi_{\Lambda_h})(q_h - r_h)\|_M^2 \\ &\geq \frac{1}{2} \|(I - \Pi_{\Lambda_h})(q_h - r_h)\|_M^2 - \|\Pi_{M_h} B(v_h - w_h) - \Pi_{\Lambda_h} B(v_h - w_h)\|_M^2 \\ &\geq \frac{1}{2} \|(I - \Pi_{\Lambda_h})(q_h - r_h)\|_M^2 - \|(I - \Pi_{\Lambda_h})B(v_h - w_h)\|_M^2 \end{aligned}$$

since  $\Lambda_h \subset M_h$ . Moreover, in all cases for  $\Lambda_h$ ,

$$\|(I - \Pi_{\Lambda_h})B(v_h - w_h)\|_M \lesssim h^{1/2} \|B(v_h - w_h)\|_H \lesssim h^{1/2} \|v_h - w_h\|_V.$$

To conclude, observe that  $\|\Pi_{\Lambda_h}(q_h - r_h)\|_M = \|\Pi_{\Lambda_h}B(v_h - w_h)\|_M \leq c_M c_B \|v_h - w_h\|_V$ .  $\square$

As in the continuous case, the discrete decomposed problem (42) is tackled by solving the stationarity conditions for the discrete augmented Lagrangian  $L_{r,h}$ , that is, we seek  $x_h := (u_h, p_h) \in V_h \times M_h^+$  and  $\theta_h \in \Lambda_h$  such that

$$\langle W'(u_h), v_h \rangle_{V',V} + (\theta_h, Bv_h)_M + r(\Pi_{M_h}Bu_h - p_h, Bv_h)_M = 0, \quad \forall v_h \in V_h, \quad (44)$$

$$(\psi'(p_h), q_h - p_h)_{M_h} - (\theta_h, q_h - p_h)_M - r(Bu_h - p_h, q_h - p_h)_M \geq 0, \quad \forall q_h \in M_h^+, \quad (45)$$

$$(\lambda_h, Bu_h - p_h)_M = 0, \quad \forall \lambda_h \in \Lambda_h. \quad (46)$$

By proceeding as in the continuous case (and using additional simplifications due to the finite-dimensional setting), the following equivalence result is readily verified.

**Proposition 4.5.** *If  $(x_h, \theta_h)$  is a local saddle-point of  $L_{r,h}$  on  $K_h \times \Lambda_h$ , then  $x_h \in K_h \cap \ker \tilde{B}_h$  is a local minimizer of the discrete decomposed problem (42). Conversely, let  $x_h \in K_h \cap \ker \tilde{B}_h$  be a local minimizer of the discrete decomposed problem (42). Then, there exists a unique  $\theta_h \in \Lambda_h$  such that  $(x_h, \theta_h)$  is a stationary point of  $L_{r,h}$  on  $K_h \times \Lambda_h$ . Moreover, if the following second-order condition holds,*

$$\langle J''_{0,h}(x_h), (d_h, d_h) \rangle > 0, \quad \forall d_h \in (V_h \times \overline{C_{+,h}(x_h)}) \cap \ker \tilde{B}_h \setminus \{0\}, \quad (47)$$

where  $C_{+,h}(x_h) = \{d_h \in M_h; \exists \alpha > 0, p_h + \alpha d_h \in M_h^+\}$ , then  $(x_h, \theta_h)$  is a local saddle-point of the augmented Lagrangian on  $K_h \times \Lambda_h$  for  $r$  large enough.

**Remark 4.6.** In the decomposition-coordination method or when assembling the Jacobian matrix in Newton's method (see Section 5), the variational inequality (45) has to be solved with fixed  $u_h$  and  $\theta_h$ . This amounts to a nonlinear problem of size the dimension of  $M_h$ , namely of size  $n_q \times N_\Gamma$  where  $n_q$  is defined above and where  $N_\Gamma$  stands for the cardinal number of the set  $\mathcal{F}_h$ . The key point is that since the underlying quadrature is at least of degree  $2k$ , (45) is equivalent to

$$(\psi'(p_h), q_h - p_h)_{M_h} - (\theta_h, q_h - p_h)_{M_h} - r(Bu_h - p_h, q_h - p_h)_{M_h} \geq 0, \quad \forall q_h \in M_h^+, \quad (48)$$

and using the nodal basis of  $M_h$ , this leads to  $n_q \times N_\Gamma$  uncoupled one-dimensional nonlinear problems. Note that (48) amounts to the minimization problem

$$\min_{q_h \in M_h^+} (\psi_h(q_h), 1)_{M_h} - (\theta_h, q_h)_M + \frac{r}{2} \|\tilde{B}_h^\#(y_h, q_h)\|_M^2. \quad (49)$$

It is readily verified that for  $r \geq k_{\psi'}$ , the above functional is convex so that the minimization problem (49) has a unique solution.

### 4.3. Error analysis

This section is devoted to the error analysis for the three choices (30)–(32) of discrete spaces  $V_h$ ,  $M_h$ , and  $\Lambda_h$ . Their analysis is of increasing complexity. In (30) and (31),  $\Lambda_h = M_h$ , while  $M_h^+ \subset M^+$  in (30), but  $M_h^+ \not\subset M^+$  in (31); finally, in (32),  $\Lambda_h \neq M_h$  and  $M_h^+ \not\subset M^+$ . In all cases, the goal is to obtain error estimates with (quasi)optimal convergence rates in the meshsize  $h$  under the assumption that the exact solution is unique and smooth enough. We assume for the sake of simplicity that the functional  $J_{r,h}$  is  $\alpha$ -convex on  $K_h \cap \ker \tilde{B}_h$  so that the discrete solution is also unique. Sufficient conditions for  $\alpha$ -convexity and uniqueness are given by

Propositions 4.3 and 4.4 above. In the sequel,  $(x, \theta)$  with  $x := (u, p)$  denotes the exact solution and  $(x_h, \theta_h)$  with  $x_h := (u_h, p_h)$  denotes the approximate solution. Henceforth, we assume that  $\theta \in M$ . Then, using the density of  $H^+$  in  $M^+$ , (19) yields  $(\psi'(p) - \theta, q - p)_M \geq 0$  for all  $q \in M^+$ , whence it is classically deduced that  $\psi'(p) - \theta \in M^+$  and that  $\text{supp}(\psi'(p) - \theta) \cap \text{supp}(p)$  has zero measure.

We introduce an additional regularity assumption regarding the topology of the subset of  $\Gamma$  where the unilateral constraint  $p \geq 0$  is actually active, namely, letting

$$\Gamma_0(p) := \{x \in \Gamma; p(x) = 0\}, \quad \text{and} \quad \Gamma_+(p) := \Gamma \setminus \Gamma_0(p), \quad (50)$$

we assume that the set  $\overline{\Gamma_0(p)} \cap \overline{\Gamma_+(p)}$  is

- in 2D/1D, a finite union of points;
- in 3D/2D, a finite union of Lipschitz curves.

Under this assumption, henceforth referred to as  $A[p]$ , a sharper error estimate can be obtained by using the modified Lagrange interpolate introduced by H\"ueber and Wohlmuth [19] in the piecewise affine case or its piecewise quadratic extension in 2D/1D introduced in Lemma 4.13 below.

Since we are working in a nonconforming framework ( $M_h \not\subset H$  and possibly  $M_h^+ \not\subset M^+$ ) and recalling that we have set  $Z := V \times M$ , it is convenient to redefine the operator  $\tilde{B}$  as  $Z \ni y := (v, q) \mapsto Bv - q \in M$  and to extend the domain of the functional  $J_r$  to  $Z$ . Moreover, taking advantage that for the exact solution  $\theta \in M$ , the augmented Lagrangian is now redefined as

$$L_r : Z \times M \ni (y, \lambda) \mapsto L_r(y, \lambda) := J_r(y) + (\lambda, \tilde{B}y)_M \in \mathbb{R}. \quad (51)$$

#### 4.3.1. An abstract error estimate

In the sequel,  $A \lesssim B$  means the inequality  $A \leq cB$  with a positive constant independent of the meshsize. The proof of the following key abstract error estimate is postponed to Appendix A. Observe that the error  $(x - x_h)$  is measured in the  $\|\cdot\|_Z$ -norm, that is the  $H^1(\Omega)^d$ -norm for the bulk displacement and the  $L^2(\Gamma)$ -norm for the normal displacement on  $\Gamma$ , while the error  $(\theta - \theta_h)$  on the Lagrange multiplier is measured in the  $L^2(\Gamma)$ -norm scaled by the factor  $h^{1/2}$ .

**Lemma 4.7.** *For all  $y_h := (v_h, q_h) \in K_h \cap \ker \tilde{B}_h^\sharp$  and for all  $q \in M^+$ , letting*

$$\eta_{\text{unil}}(q) := (\psi'(p) - \theta, q - p_h)_M, \quad (52)$$

$$\eta_{\text{unil}}(q_h) := (\psi'(p) - \theta, q_h - p)_M, \quad (53)$$

$$\eta_{\text{quad}}(q_h) := \sup_{r_h \in M_h, \|r_h\|_M=1} |(\psi'(q_h), r_h)_M - (\psi'(q_h), r_h)_{M_h}|, \quad (54)$$

there holds

$$\|x - x_h\|_Z^2 \lesssim \|x - y_h\|_Z^2 + \eta_{\text{unil}}(q_h) + \eta_{\text{quad}}(y_h)^2 + \eta_{\text{unil}}(q) + h^s \|\theta - \Pi_{\Lambda_h} \theta\|_M^2, \quad (55)$$

$$\beta_h h^{1/2} \|\theta - \theta_h\|_M \lesssim h^{1/2} \|\theta - \Pi_{\Lambda_h} \theta\|_M + \|x - x_h\|_Z, \quad (56)$$

where  $s = 1$  if  $\Lambda_h = M_h$  and  $s = 0$  otherwise.

**Remark 4.8.**  $\eta_{\text{unil}}(q)$  measures the nonconformity error resulting from  $M_h^+ \not\subset M^+$ ; indeed, if  $p_h \in M^+$ , taking  $q = p_h$  yields  $\eta_{\text{unil}}(q) = 0$ .  $\eta_{\text{quad}}(q_h)$  measures the quadrature error when evaluating the cohesive energy. Finally,  $\|x - y_h\|_Z + \eta_{\text{unil}}(q_h)$  measures the interpolation error while accounting for the unilateral constraint. To evaluate it, specific interpolants are constructed by modifying the usual Lagrange interpolant; see below.

4.3.2. *The case  $M_h = \mathcal{P}_d^0(\mathcal{F}_h)$ ,  $\Lambda_h = M_h$ , and  $V_h \supset \mathcal{P}_c^1(\mathcal{T}_h)^d$*

**Theorem 4.9.** *Let  $M_h = \mathcal{P}_d^0(\mathcal{F}_h)$ ,  $\Lambda_h = M_h$ , and  $V_h \supset \mathcal{P}_c^1(\mathcal{T}_h)^d$ . Assume  $u \in H^{3/2+\nu}(\Omega)$ ,  $p \in H^{1+\nu}(\Gamma)$ , and  $\theta \in H^\nu(\Gamma)$  with  $0 < \nu \leq \frac{1}{2}$ . Then, in the above framework, there holds*

$$\|x - x_h\|_Z + \beta_h h^{1/2} \|\theta - \theta_h\|_M \lesssim h^{1/2+\nu}. \quad (57)$$

*Proof.* We apply Lemma 4.7 in the setting  $\Lambda_h = M_h$  and  $\tilde{B}_h^\# = \tilde{B}_h$ . Since  $M_h^+ \subset M^+$  because  $M_h = \mathcal{P}_d^0(\mathcal{F}_h)$ , we can take  $q = p_h$  to obtain  $\eta_{\text{unil}}(q) = 0$ . Moreover, it is readily verified that for piecewise constant functions,  $\eta_{\text{quad}}(q_h) = 0$ . It remains to select  $y_h := (v_h, q_h) \in K_h \cap \ker \tilde{B}_h$  to estimate  $\eta_{\text{unil}}(q_h)$  and  $\|x - y_h\|_Z$ . Let  $\mathcal{I}_{\text{HW}}^1$  be the piecewise affine interpolation operator introduced by H\"ueber and Wohlmuth; see [19] and also the left panel of Fig. 2. Recall that  $\mathcal{I}_{\text{HW}}^1 p \geq 0$  on  $\Gamma$  and that  $\text{supp}(\mathcal{I}_{\text{HW}}^1 p) \subset \text{supp}(p)$ . In particular, since  $\text{supp}(\psi'(p) - \theta) \cap \text{supp}(p)$  has zero measure, it is inferred that  $(\psi'(p) - \theta, \mathcal{I}_{\text{HW}}^1 p)_M = 0$ . Hence, setting  $q_h := \Pi_{\Lambda_h} \mathcal{I}_{\text{HW}}^1 p$ , it is clear that  $q_h \in M_h^+$  since  $\Lambda_h = \mathcal{P}_d^0(\mathcal{F}_h)$ . Moreover, observing that  $q_h$  and  $\mathcal{I}_{\text{HW}}^1 p$  have the same support yields

$$\eta_{\text{unil}}(q_h) = 0.$$

Now, let  $\mathcal{I}_{\text{Lag}}^1$  be the usual piecewise affine Lagrange interpolation operator (the same notation is used for interpolating vector-valued functions in  $\Omega$  and scalar-valued functions on  $\Gamma$ ). Define  $v_h \in \mathcal{P}_c^1(\mathcal{T}_h)^d$  from  $\mathcal{I}_{\text{Lag}}^1 u$  by just modifying the normal component of the nodal values located on  $\Gamma$  so that  $Bv_h = \mathcal{I}_{\text{HW}}^1 p$  on  $\Gamma$ . Then, by construction,  $y_h := (v_h, q_h) \in K_h \cap \ker \tilde{B}_h$ . In addition, since  $u \in H^{3/2+\nu}(\Omega)$ , standard interpolation properties (see, e.g., [12]) lead to

$$\|u - \mathcal{I}_{\text{Lag}}^1 u\|_V \lesssim h^{1/2+\nu},$$

and using an inverse inequality, the triangle inequality, standard approximation properties of  $\mathcal{I}_{\text{Lag}}^1$ , and the fact that  $p \in H^{1+\nu}(\Gamma)$  yields

$$\|\mathcal{I}_{\text{Lag}}^1 u - v_h\|_V \lesssim h^{-1/2} \|\mathcal{I}_{\text{Lag}}^1 p - \mathcal{I}_{\text{HW}}^1 p\|_M \leq h^{-1/2} (h^{1+\nu} + \|p - \mathcal{I}_{\text{HW}}^1 p\|_M).$$

Assumption A[p] is now used to infer that  $\|p - \mathcal{I}_{\text{HW}}^1 p\|_M \lesssim h^{1+\nu}$ ; see [19]. Collecting the above estimates yields  $\|u - v_h\|_V \lesssim h^{1/2+\nu}$  and since

$$\|p - q_h\|_M \leq \|p - \Pi_{\Lambda_h} p\|_M + \|\Pi_{\Lambda_h} (p - \mathcal{I}_{\text{HW}}^1 p)\|_M \leq \|p - \Pi_{\Lambda_h} p\|_M + \|p - \mathcal{I}_{\text{HW}}^1 p\|_M \lesssim h^{1+\nu},$$

it is inferred that

$$\|x - y_h\|_Z \lesssim h^{1/2+\nu}.$$

Finally, since  $\theta \in H^\nu(\Gamma)$ ,  $\|\theta - \Pi_{\Lambda_h} \theta\|_M \lesssim h^\nu$ , whence the conclusion is straightforward.  $\square$

4.3.3. *The case  $M_h = \mathcal{P}_d^1(\mathcal{F}_h)$ ,  $\Lambda_h = M_h$ , and  $V_h \supset \mathcal{P}_c^2(\mathcal{T}_h)^d$*

**Theorem 4.10.** *Let  $M_h = \mathcal{P}_d^1(\mathcal{F}_h)$ ,  $\Lambda_h = M_h$ , and  $V_h \supset \mathcal{P}_c^2(\mathcal{T}_h)^d$ . Assume  $u \in H^{2+\nu}(\Omega)$ ,  $p \in H^{3/2+\nu}(\Gamma)$ , and  $\theta \in H^{1/2+\nu}(\Gamma)$  with  $\nu > 0$ . Then, in the above framework, there holds in 3D/2D,*

$$\|x - x_h\|_Z + \beta_h h^{1/2} \|\theta - \theta_h\|_M \lesssim h^{\min(3/4+\nu/2, 1)}, \quad (58)$$

and in 2D/1D,

$$\|x - x_h\|_Z + \beta_h h^{1/2} \|\theta - \theta_h\|_M \lesssim h. \quad (59)$$

*Proof.* Again, we apply Lemma 4.7 in the setting  $\Lambda_h = M_h$  and  $\tilde{B}_h^\# = \tilde{B}_h$ . Consider first  $\eta_{\text{unil}}(q)$ . Taking  $q = p_h^+$ , the non-negative part of  $p_h$ , and observing that  $p$  vanishes in  $\text{supp}(\psi'(p) - \theta)$  yields

$$\eta_{\text{unil}}(q) \lesssim \|1_{\Gamma_0(p)}(p_h - p_h^+)\|_M \lesssim h^{1/2} \|1_{\Gamma_0(p)} p_h\|_H = h^{1/2} \|p - p_h\|_H.$$

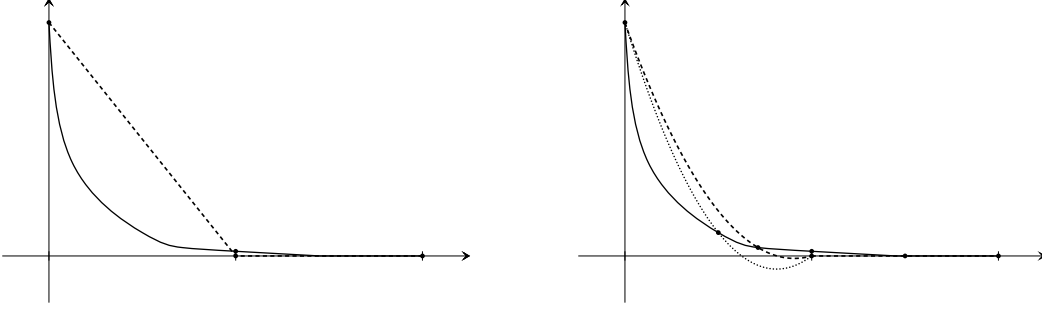


FIGURE 2. Principle of the Hübner–Wohlmuth interpolate; left: piecewise affine case; right: piecewise quadratic case.

Moreover,

$$\|p - p_h\|_H = \|Bu - \Pi_{\Lambda_h} Bu_h\|_H \leq \|B(u - u_h)\|_H + \|(I - \Pi_{\Lambda_h})Bu_h\|_H \lesssim \|u - u_h\|_V + h^{1/2}\|Bu_h\|_{H^1(\Gamma)},$$

and it is readily verified using triangle and inverse inequalities that  $\|Bu_h\|_{H^1(\Gamma)} \lesssim \|Bu\|_{H^1(\Gamma)} + h^{-1/2}\|u - u_h\|_V$ . As a result,

$$\eta_{\text{unil}}(q) \lesssim h^{1/2}\|u - u_h\|_V + h.$$

Consider now  $\eta_{\text{quad}}(q_h)$  for  $q_h \in M_h$ . Let  $r_h \in M_h$  with  $\|r_h\|_M = 1$ . Then,

$$\eta_{\text{quad}}(q_h) \lesssim \sum_{F \in \mathcal{F}_h} h|\psi' \circ q_h|_{H^1(F)} \|r_h\|_{L^2(F)} \lesssim h|q_h|_{H^1(\Gamma)},$$

since  $\nabla(\psi' \circ q_h) = (\psi'' \circ q_h)\nabla q_h$  and  $\psi''$  is bounded. Consider now  $\eta_{\text{unil}}(q_h)$  and  $\|x - y_h\|_Z$ . In 3D/2D, we set  $v_h = \mathcal{I}_{\text{Lag}}^2 u$ , the piecewise quadratic Lagrange interpolate of  $u$ , and  $q_h = \Pi_{M_h} \mathcal{I}_{\text{Lag}}^2 u$ . Then,  $q_h \in M_h^+$ ; see Lemma 4.12 below. Moreover,

$$\eta_{\text{unil}}(q_h) \lesssim \|p - q_h\|_M \lesssim h^{\min(3/2+\nu, 2)},$$

and  $\|x - y_h\|_Z \lesssim h^{\min(1+\nu, 2)}$ . Collecting the above estimates yields (58). In 2D/1D, we consider the piecewise quadratic extension,  $\mathcal{I}_{\text{HW}}^2$ , of the Hübner–Wohlmuth interpolation operator; see Lemma 4.13 below. Then, we set  $q_h = \Pi_{M_h} \mathcal{I}_{\text{HW}}^2 p$  and  $v_h$  is obtained from  $\mathcal{I}_{\text{Lag}}^2 u$  by just modifying the normal component of the nodal values located on  $\Gamma$  so that  $Bv_h = \mathcal{I}_{\text{HW}}^2 p$ . Then, proceeding as in the proof of Theorem 4.9 yields  $\eta_{\text{unil}}(q_h) = 0$ , and  $\|x - y_h\|_Z \lesssim h^{\min(1+\nu, 2)}$ . Collecting the above estimates yields (59).  $\square$

**Remark 4.11.** The estimates (58) and (59) are suboptimal. A similar error estimate has been obtained for quadratic approximations of two-field formulations of unilateral contact problems in [18]. The main bottleneck is the sub-optimality of  $\eta_{\text{nonc}}(q)$  resulting from the fact that  $p_h$  can take negative values.

**Lemma 4.12.** *Let  $F$  be a triangle, let  $u \in \mathbb{P}_2(F)$ , and assume that  $u \geq 0$  in  $F$ . Let  $\Pi_1 u$  be the  $L^2$ -orthogonal projection of  $u$  onto  $\mathbb{P}_1(F)$ . Let  $(\xi_i^F)_{1 \leq i \leq 3}$  be the midpoints of the three edges of  $F$ . Then, for all  $1 \leq i \leq 3$ ,  $\Pi_1 u(\xi_i^F) \geq 0$ .*

*Proof.* Let  $(\phi_i^F)_{1 \leq i \leq 3}$  be the (Crouzeix–Raviart) basis functions associated with the nodes  $(\xi_i^F)_{1 \leq i \leq 3}$ . Observe that for all  $1 \leq i \leq 3$ ,

$$\frac{1}{3}\Pi_1 u(\xi_i^F) = \frac{1}{|F|} \int_F u \phi_i^F.$$



Moreover, using the classical 7-point quadrature of degree 3 yields

$$\int_F u \phi_1^F = \frac{3}{20} u(\gamma^F) + \frac{2}{15} u(\xi_1^F) + \frac{1}{20} (u(\sigma_2^F) + u(\sigma_3^F) - u(\sigma_1^F)),$$

where  $\gamma^F$  denotes the barycenter of  $F$  and  $\sigma_i^F$  is the vertex of  $F$  opposite the edge containing  $\xi_i^F$ . Furthermore, since  $u \in \mathbb{P}_2(F)$ ,

$$u(\gamma^F) = \frac{1}{3} (u(\sigma_1^F) + u(\sigma_2^F) + u(\sigma_3^F)) + \frac{4}{9} (u(\xi_1^F) + u(\xi_2^F) + u(\xi_3^F)),$$

so that  $\int_F u \phi_1^F$  is a linear combination of non-negative terms. The same holds for  $i \in \{2, 3\}$ .  $\square$

**Lemma 4.13.** *Assume  $\Omega \subset \mathbb{R}^2$ . Then, there exists an interpolation operator  $\mathcal{I}_{\text{HW}}^2 : H^1(\Gamma) \rightarrow \mathcal{P}_c^2(\mathcal{F}_h)$  such that*

- (i) *if  $q \geq 0$ , then  $\mathcal{I}_{\text{HW}}^2 q(\xi_i^F) \geq 0$  for all  $1 \leq i \leq n_q$  and for all  $F \in \mathcal{F}_h$ ;*
- (ii)  *$\text{supp}(\mathcal{I}_{\text{HW}}^2 q) \subset \text{supp}(q)$ ;*
- (iii) *if  $p \in H^{3/2+\nu}(\Gamma)$ ,  $\nu \leq \frac{3}{2}$ , satisfies Assumption A[p], then  $\|p - \mathcal{I}_{\text{HW}}^2 p\|_M \lesssim h^{3/2+\nu}$ .*

*Proof.* Consider first the usual, piecewise quadratic Lagrange interpolate of  $q$ , say  $\mathcal{I}_{\text{Lag}}^2 q$ . Since  $\Omega \subset \mathbb{R}^2$ , each  $F \in \mathcal{F}_h$  is a segment and the restriction of  $\mathcal{I}_{\text{Lag}}^2 q$  to  $F$  can be specified by its values at the endpoints and the midpoint of  $F$ . Two modifications need to be implemented. Firstly, as for  $\mathcal{I}_{\text{HW}}^1$ , if for a face  $F \in \mathcal{F}_h$ ,  $F \cap \{x \in \Gamma; q(x) = 0\}$  has nonzero measure, the three nodal values of  $\mathcal{I}_{\text{HW}}^2 q$  are set to zero on that face. This suffices to guarantee Property (ii). However, contrary to the construction of  $\mathcal{I}_{\text{HW}}^1$ , this does not suffice to guarantee Property (i). To this purpose a further modification is needed. Let  $F \in \mathcal{F}_h$  and assume that  $\mathcal{I}_{\text{Lag}}^2 q$  is negative at one quadrature node (it cannot take negative values at the two quadrature nodes since it takes non-negative values at the interval endpoints and midpoint and can have only one minimizer). Then, instead of interpolating at the midpoint, we interpolate at this quadrature node; see the right panel of Fig. 2. To verify that the resulting quadratic interpolate is still non-negative at the other quadrature node, consider the reference interval  $[0, 1]$  with  $\xi_{\pm} = \frac{1}{2}(1 \pm \frac{1}{\sqrt{3}})$ . Let  $\lambda_0(t) = 1 - t$ ,  $\lambda_1(t) = t$ , and  $b(t) = 4t(1 - t)$  so that the usual quadratic Lagrange interpolate of a non-negative function  $q$  takes the form

$$\alpha \lambda_0(t) + \beta \lambda_1(t) + (\gamma - \frac{1}{2}(\alpha + \beta))b(t),$$

with non-negative coefficients  $\alpha = q(0)$ ,  $\beta = q(1)$ , and  $\gamma = q(\frac{1}{2})$ . If this interpolate is negative at, say,  $\xi_+$ , this yields  $\frac{1}{6}(\alpha + \beta) + \frac{2}{3}\gamma - \frac{1}{2\sqrt{3}}(\alpha - \beta) \leq 0$ , so that  $\alpha \geq \beta$ . Now, the Lagrange interpolate using the two endpoints and the node  $\xi_+$  takes the form

$$\alpha \lambda_0(t) + \beta \lambda_1(t) + \frac{3}{2}(\delta - \alpha \lambda_0(\xi_+) - \beta \lambda_1(\xi_+))b(t),$$

with  $\delta = q(\xi_+)$  and evaluating this expression at  $\xi_-$  yields  $\delta + \frac{1}{\sqrt{3}}(\alpha - \beta) \geq 0$ . This proves Property (i). Finally, Property (iii) is established as in [19] using Assumption A[p] and the fact that a possible interpolation at a quadrature node and not at a midpoint does not alter the asymptotic accuracy of the quadratic Lagrange interpolate.  $\square$

4.3.4. *The case  $M_h = \mathcal{P}_d^1(\mathcal{F}_h)$ ,  $\Lambda_h = \mathcal{P}_c^1(\mathcal{F}_h)$ , and  $V_h = \mathcal{P}_c^2(\mathcal{T}_h)^d$*

**Theorem 4.14.** *Let  $M_h = \mathcal{P}_d^1(\mathcal{F}_h)$ ,  $\Lambda_h = \mathcal{P}_c^1(\mathcal{F}_h)$ , and  $V_h = \mathcal{P}_c^2(\mathcal{T}_h)^d$ . Assume  $u \in H^{2+\nu}(\Omega)$ ,  $p \in H^{3/2+\nu}(\Gamma)$ , and  $\theta \in H^1(\Gamma)$  with  $0 < \nu \leq 1$ . Then, in the above framework, there holds in 3D/2D,*

$$\|x - x_h\|_Z + \beta_h h^{1/2} \|\theta - \theta_h\|_M \lesssim h^{\min(3/4+\nu/2, 1)}, \quad (60)$$

and in 2D/1D,

$$\|x - x_h\|_Z + \beta_h h^{1/2} \|\theta - \theta_h\|_M \lesssim h. \quad (61)$$

*Proof.* We apply Lemma 4.7 in the setting  $\Lambda_h \neq M_h$ . All the terms in the error upper bound are estimated as above, except the interpolation error on the Lagrange multiplier for which there holds  $\|\theta - \Pi_{\Lambda_h} \theta\|_M \lesssim h$  since  $\theta \in H^1(\Gamma)$ .  $\square$

## 5. ALGORITHMS

In this section, we present two iterative algorithms for solving the discrete problem (44)–(46), namely a decomposed version of a classical Uzawa algorithm and a nonsmooth Newton’s method.

### 5.1. A decomposed Uzawa algorithm

The first algorithm we propose is a decomposed version of a classical iterative Uzawa algorithm. Each iteration of the decomposed algorithm consists of the following steps:

$$u_h^{n+1} \leftarrow \arg \min_{v_h \in V_h} L_{r,h}(v_h, p_h^n; \theta_h^n), \quad (62)$$

$$p_h^{n+1} \leftarrow \arg \min_{q_h \in M_h^+} L_{r,h}(u_h^{n+1}, q_h; \theta_h^n), \quad (63)$$

$$\theta_h^{n+1} \leftarrow \theta_h^n + \rho \Pi_{\Lambda_h} (\Pi_{M_h} B_h u_h^{n+1} - p_h^{n+1}), \quad (64)$$

where  $\rho$  is an arbitrary positive parameter. Instead of minimizing directly the Lagrangian with respect to the couple  $(u_h^n, p_h^n)$ , the Lagrangian is minimized with respect to  $u_h^n$  and then with respect to  $p_h^n$ . This is the difference with the classical Uzawa algorithm.

Step (62) amounts to the solution of a linear system. Moreover, at each iteration, only the right-hand side changes. Hence, this step can be efficiently solved once a factorization method has been initially performed (LU factorization for instance). Step (63) is solved by the collocation method described in Section 4.1. Finally, Step (64) is straightforward if  $\Lambda_h = M_h$  since it can be performed elementwise. Otherwise, it requires a projection onto  $\Lambda_h$  by inverting a global mass matrix.

**Remark 5.1.** This algorithm corresponds to ALG2 in [13], where a slightly different version called ALG3, equivalent to the LATIN method [23], is also proposed.

We now prove a global convergence result for the decomposed Uzawa algorithm in the case where  $\Lambda_h = M_h$  and under the convexity condition (8). Recall that this condition implies the  $\alpha$ -convexity of the discrete functional  $J_{r,h}$  and thus the uniqueness of the discrete solution  $(u_h, p_h, \theta_h)$ . The following proposition yields sufficient conditions on the parameters  $r$  and  $\rho$  for global convergence. Its proof is postponed to Appendix B.

**Proposition 5.2.** *Assume  $\Lambda_h = M_h$  and that the convexity condition (8). If the parameters  $r$  and  $\rho$  are such that*

$$r \geq \rho \geq 2k_{\psi'} \quad \text{and} \quad r > 2k_{\psi}, \quad (65)$$

*Algorithm (62)–(64) is well-defined and converges to  $(u_h, p_h, \theta_h)$  for any initialization.*

**Remark 5.3.** When the functional is nonconvex, a convergence result exists for the classical Uzawa algorithm [3]. We did not try to extend it to the decomposed version described here.

### 5.2. A nonsmooth Newton’s method

Let  $(u_h, p_h, \theta_h)$  solve (44)–(46). Given  $u_h$  and  $\theta_h$ , the variational inequality (45) is equivalent to the minimization problem (49). Recall that for  $r \geq k_{\psi'}$ , this problem has a unique solution. Hence,  $p_h$  can be expressed as a function of  $u_h$  and  $\theta_h$  in the form  $p_h := \pi(u_h, \theta_h)$ . Equations (44) and (46) can then be recast as a nonlinear system of equations

$$\langle W'(u_h), v_h \rangle_{V',V} + (\theta_h, v_h)_M + r(Bu_h - \pi(u_h, \theta_h), Bv_h)_M = 0, \quad \forall v_h \in V_h, \quad (66)$$

$$(\lambda_h, Bu_h - \pi(u_h, \theta_h))_M = 0, \quad \forall \lambda_h \in \Lambda_h, \quad (67)$$

or in a compact form with  $z_h := (u_h, \theta_h)$ ,

$$F(z_h) = 0, \quad (68)$$

where  $F$  maps  $V_h \times \Lambda_h$  onto  $V_h \times \Lambda_h$ . Equation (68) can be solved using a Newton's method. However, the function  $F$  is continuous but non-differentiable owing to the unilateral constraint.  $F$  is locally Lipschitz continuous though, so that, according to Rademacher's theorem, it is differentiable almost everywhere. Denote by  $D_F \subset V_h \times \Lambda_h$  the set where  $F$  is differentiable. For the points where  $F$  is non-differentiable, we introduce the generalized Jacobian as defined in [9],

$$\partial F(z) = co \left\{ \lim_{z_i \rightarrow z, z_i \in D_F} \nabla F(z_i) \right\}, \quad (69)$$

where  $co$  stands for the convex hull of a set. The nonsmooth Newton's method consists of the step

$$z_h^{n+1} \leftarrow z_h^n - G_n^{-1} F(z_h^n), \quad (70)$$

where  $G_n \in \partial F(z_h^n)$ .

**Proposition 5.4.** *Let  $(u_h, \theta_h)$  solve (68). Assume that all  $G \in \partial F(u_h, \theta_h)$  are nonsingular. Then, if  $r \geq k_\psi'$ , Newton's method (70) is well-defined and converges to  $(u_h, \theta_h)$  for an initialization sufficiently close to  $(u_h, \theta_h)$ .*

*Proof.* The function  $F$  is said to be semi-smooth at a point  $z \in V_h \times \Lambda_h$  if  $F$  is locally Lipschitz at  $z$  and

$$\lim_{G \in \partial F(z+td), d \rightarrow e, t \rightarrow 0^+} Gd \text{ exists for all } e \in V_h \times \Lambda_h. \quad (71)$$

We can verify that  $F$  is semi-smooth on  $V_h \times \Lambda_h$  and conclude using a convergence result [27] on Newton's method for semi-smooth functions.  $\square$

**Remark 5.5.** Newton's method is a local method. To globalize it, a line-search technique with the augmented Lagrangian as merit function can be used.

## 6. NUMERICAL RESULTS

To investigate numerically the proposed methodology, we build a 2D benchmark problem with analytical solution. Let  $\Omega := ]0, L_x[ \times ]0, L_y[$  and  $\Gamma := ]0, L_x[ \times \{0\}$ . Consider the cohesive law

$$t(x) = \begin{cases} \sigma_c \frac{(x-d_c)^2}{d_c^2} & \text{if } x \in [0, d_c], \\ 0 & \text{if } x > d_c. \end{cases} \quad (72)$$

Let  $n \geq 2$  and let  $L_0 \in \mathbb{R}$  be such that  $0 < L_0 < L_x$ . Introducing the functions

$$s(x) = \begin{cases} d_c(1 - \frac{x}{L_0})^n & \text{if } x \in [0, L_0], \\ 0 & \text{if } x \in [L_0, L_x], \end{cases} \quad \text{and} \quad \phi(x) = \begin{cases} t(x) & \text{if } x \in [0, L_0], \\ \sigma_c & \text{if } x \in [L_0, L_x], \end{cases} \quad (73)$$

the bulk displacement in the analytical solution is set to

$$u(x, y) := \begin{pmatrix} -ys'(x) \\ s(x) + y\phi(x) \end{pmatrix}. \quad (74)$$

This solution is built to satisfy the boundary condition of unilateral contact with cohesive forces on  $\Gamma$ . The normal displacement on  $\Gamma$  is given by the function  $s$ , and the contact zone corresponds to the interval  $[L_0, L_x]$ . To

$h$	$\ u - u_h\ _{H^1}$		$\ p - p_h\ _{L^2}$		$\ \theta - \theta_h\ _{L^2}$	
2.83	6.42e-2	-	2.95e-2	-	1.04e-2	-
1.54	2.49e-2	1.55	1.51e-2	1.09	5.93e-3	0.92
0.80	1.02e-2	1.36	7.60e-3	1.04	1.17e-3	2.46
0.40	4.98e-3	1.04	3.80e-3	1.01	2.50e-4	2.25
0.21	2.33e-3	1.13	1.90e-3	1.04	5.35e-5	2.31

TABLE 1. Errors and convergence rates with  $V_h = \mathcal{P}_c^1(\mathcal{T}_h)^d$  and  $M_h = \Lambda_h = \mathcal{P}_d^0(\mathcal{F}_h)$ .

$h$	$\ u - u_h\ _{H^1}$		$\ p - p_h\ _{L^2}$		$\ \theta - \theta_h\ _{L^2}$	
2.83	4.12e-3	-	3.53e-3	-	2.94e-4	-
1.54	8.60e-4	2.57	8.87e-4	2.26	1.10e-5	5.38
0.80	1.90e-4	2.29	2.22e-4	2.10	2.95e-6	2.00
0.40	5.31e-5	1.86	5.59e-5	2.01	7.52e-7	1.99
0.21	1.60e-5	1.80	1.48e-5	1.99	1.93e-7	2.03

TABLE 2. Errors and convergence rates with  $V_h = \mathcal{P}_c^2(\mathcal{T}_h)^d$  and  $M_h = \Lambda_h = \mathcal{P}_d^1(\mathcal{F}_h)$ .

$\rho/r$	$r = k_{\psi'}$	$r = 2k_{\psi'}$	$r = 10k_{\psi'}$	$r = 20k_{\psi'}$	$r = 100k_{\psi'}$
0.5	$\infty$	13	12	9	5
1.0	$\infty$	32	7	6	3
1.5	$\infty$	$\infty$	11	7	5
2.0	$\infty$	$\infty$	$\infty$	$\infty$	$\infty$

TABLE 3. Number of iterations in the decomposed Uzawa algorithm for various couples  $(r, \rho)$ .

complete the specification of the test case, it remains to choose suitable external load and boundary conditions on  $\partial\Omega \setminus \Gamma$  according to (74). We can readily verify that  $u \in H^{n-1}(\Omega)$ .

First, we study the convergence rates for two choices of finite element spaces, namely  $V_h = \mathcal{P}_c^1(\mathcal{T}_h)^d$  and  $M_h = \Lambda_h = \mathcal{P}_d^0(\mathcal{F}_h)$  (referred to as  $\mathbb{P}_1/\mathbb{P}_0$  case) and  $V_h = \mathcal{P}_c^2(\mathcal{T}_h)^d$  and  $M_h = \Lambda_h = \mathcal{P}_d^1(\mathcal{F}_h)$  (referred to as  $\mathbb{P}_2/\mathbb{P}_1$  case). The simulations are performed with the decomposed Uzawa algorithm. The Young modulus and the Poisson ratio are  $E = 2 \cdot 10^5$  and  $\nu = 0.2$ . Further parameters are  $L_x = 20$ ,  $L_y = 6$ ,  $L_0 = 10$ ,  $\sigma_c = 0.001$ , and  $d_c = 0.1$ . Observe that the Young modulus is very large so that the continuous and discrete functionals are expected to be convex. The analytical solution is chosen to be in  $H^3(\Omega)$  ( $n = 4$ ). The results are summarized in Tables 1 and 2. Optimal convergence rates are observed in both cases. In the  $\mathbb{P}_1/\mathbb{P}_0$  case, this result matches the estimate of Theorem 4.9. In the  $\mathbb{P}_2/\mathbb{P}_1$  case, the numerical result improves on the estimate of Theorem 4.10 which is suboptimal. Moreover, in both cases, the Lagrange multiplier super-converges although in the present setting for  $V_h$ , the discrete inf-sup condition is not robust with respect to meshsize.

We now address the convergence of the decomposed Uzawa algorithm. We consider that convergence is reached when the difference between the exact solution and the approximate solution is below a given tolerance. The simulations are performed with  $V_h = \mathcal{P}_c^1(\mathcal{T}_h)$  and  $M_h = \Lambda_h = \mathcal{P}_d^0(\mathcal{F}_h)$ . The numbers of iterations to reach convergence for various couples of parameters  $(r, \rho)$  are collected in Table 3. The two criteria  $r \geq \rho$  and  $r > 2k_{\psi'}$  derived in Proposition 5.2 appear to be rather sharp.

**Remark 6.1.** Numerical results with Newton's method and the choice  $V_h = \mathcal{P}_c^2(\mathcal{T}_h)$ ,  $M_h = \mathcal{P}_d^1(\mathcal{F}_h)$ , and  $\Lambda_h = \mathcal{P}_c^1(\mathcal{F}_h)$  are presented in [25], where optimal convergence rates are reported.

## APPENDIX A. PROOF OF LEMMA 4.7

*Proof.* Let  $y_h := (v_h, q_h) \in K_h \cap \ker \tilde{B}_h^\sharp$ . Since  $\ker \tilde{B}_h^\sharp \subset \ker \tilde{B}_h$  (because  $\Lambda_h \subset M_h$ ),  $y_h \in \ker \tilde{B}_h$ . As a result, it is inferred from (44)–(46) that

$$\begin{aligned} 0 &\leq \langle J'_{r,h}(x_h), y_h - x_h \rangle_{Z',Z} + (\theta_h, \tilde{B}_h(y_h - x_h))_M \\ &= \langle J'_{r,h}(x_h), y_h - x_h \rangle_{Z',Z}. \end{aligned}$$

Set  $\delta_h = x_h - y_h := (\delta_h^v, \delta_h^p)$  and observe that  $\delta_h \in \ker \tilde{B}_h$ . Then, since  $y_h \in \ker \tilde{B}_h^\sharp$ ,

$$\begin{aligned} \langle J'_{r,h}(x_h) - J'_{r,h}(y_h), \delta_h \rangle_{Z',Z} &\leq \langle -J'_{r,h}(y_h), \delta_h \rangle_{Z',Z} = \langle -J'_{0,h}(y_h), \delta_h \rangle_{Z',Z} \\ &= \langle -J'_0(y_h), \delta_h \rangle_{Z',Z} + \langle J'_0(y_h) - J'_{0,h}(y_h), \delta_h \rangle_{Z',Z} \\ &= \langle -J'_0(x), \delta_h \rangle_{Z',Z} + \langle J'_0(x) - J'_0(y_h), \delta_h \rangle_{Z',Z} + \langle J'_0(y_h) - J'_{0,h}(y_h), \delta_h \rangle_{Z',Z} \\ &= \langle -J'_0(x), \delta_h \rangle_{Z',Z} + \langle J'_0(x) - J'_0(y_h), \delta_h \rangle_{Z',Z} + (\psi'(q_h), \delta_h^q)_M - (\psi'(q_h), \delta_h^q)_{M_h} \\ &\lesssim \langle -J'_0(x), \delta_h \rangle_{Z',Z} + (\|x - y_h\|_Z + \eta_{\text{quad}}(q_h)) \|\delta_h\|_Z, \end{aligned}$$

using the Lipschitz-continuity of  $J'_0$  and the definition (54). Focusing on the first term in the right-hand side, we observe that for all  $y := (v, q) \in K$ ,

$$\begin{aligned} \langle -J'_0(x), \delta_h \rangle_{Z',Z} &= \langle -J'_0(x), y - y_h \rangle_{Z',Z} + \langle -J'_0(x), x_h - y \rangle_{Z',Z} \\ &= \langle -J'_0(x), y - y_h \rangle_{Z',Z} + (\theta, \tilde{B}(x_h - y))_M - \langle \partial_y L_0(x, \theta), x_h - y \rangle_{Z',Z} \\ &= \langle -J'_0(x), y - x \rangle_{Z',Z} + \langle -J'_0(x), x - y_h \rangle_{Z',Z} + (\theta, \tilde{B}(x_h - y))_M - \langle \partial_y L_0(x, \theta), x_h - y \rangle_{Z',Z} \\ &\leq (\theta, \tilde{B}(x_h - x))_M + \langle -J'_0(x), x - y_h \rangle_{Z',Z} - \langle \partial_y L_0(x, \theta), x_h - y \rangle_{Z',Z} \\ &= (\theta, \tilde{B}(x_h - y_h))_M - \langle \partial_y L_0(x, \theta), x - y_h \rangle_{Z',Z} - \langle \partial_y L_0(x, \theta), x_h - y \rangle_{Z',Z}, \end{aligned}$$

where we have used the fact that  $\langle -J'_0(x), y - x \rangle_{Z',Z} \leq (\theta, \tilde{B}(y - x))_M$  since  $(x, \theta)$  is the exact solution and  $y \in K$ . Furthermore, using the definitions (52) and (53) and the fact that  $V_h \subset V$ , it is readily seen that

$$\langle \partial_y L_0(x, \theta), y_h - x \rangle_{Z',Z} = (\psi'(p) - \theta, q_h - p)_M = \eta_{\text{unil}}(q_h),$$

and

$$\langle \partial_y L_0(x, \theta), y - x_h \rangle_{Z',Z} = (\psi'(p) - \theta, q - p_h)_M = \eta_{\text{unil}}(q),$$

so that

$$\langle -J'_0(x), \delta_h \rangle_{Z',Z} \leq (\theta, \tilde{B}(x_h - y_h))_M + \eta_{\text{unil}}(q_h) + \eta_{\text{unil}}(q).$$

Since  $H^+$  is dense in  $M^+$ , the above estimate can be extended by continuity to  $q \in M^+$ . Furthermore, observing that  $(x_h - y_h) \in \ker \tilde{B}_h$ , there holds

$$\begin{aligned} \langle -J'_0(x), \delta_h \rangle_{Z',Z} &\leq (\theta - \Pi_{\Lambda_h} \theta, \tilde{B}(x_h - y_h))_M + \eta_{\text{unil}}(q_h) + \eta_{\text{unil}}(q) \\ &\leq \|\theta - \Pi_{\Lambda_h} \theta\|_M \|\tilde{B}(x_h - y_h)\|_M + \eta_{\text{unil}}(q_h) + \eta_{\text{unil}}(q). \end{aligned}$$

Moreover, if  $\Lambda_h = M_h$ ,

$$\|\tilde{B}(x_h - y_h)\|_M = \|(I - \Pi_{\Lambda_h})B(u_h - v_h)\|_M \lesssim h^{1/2} \|B(u_h - v_h)\|_H \lesssim h^{1/2} \|u_h - v_h\|_V,$$

while  $\|\tilde{B}(x_h - y_h)\|_M \lesssim \|x_h - y_h\|_Z$  if  $\Lambda_h \neq M_h$ . Thus, in all cases,  $\|\tilde{B}(x_h - y_h)\|_M \lesssim h^{s/2} \|x_h - y_h\|_Z$  with  $s = 1$  if  $\Lambda_h = M_h$  and  $s = 0$  if  $\Lambda_h \neq M_h$ , and this yields

$$\langle -J'_0(x), \delta_h \rangle_{Z',Z} \lesssim h^{s/2} \|\theta - \Pi_{\Lambda_h} \theta\|_M \|x_h - y_h\|_Z + \eta_{\text{unil}}(q_h) + \eta_{\text{unil}}(q).$$

Collecting the above estimates and using (43) together with a Young inequality, it is inferred that

$$\|x_h - y_h\|_Z^2 \lesssim \|x - y_h\|_Z^2 + \eta_{\text{unil}}(q_h) + \eta_{\text{quad}}(y_h)^2 + \eta_{\text{unil}}(q) + h^s \|\theta - \Pi_{\Lambda_h} \theta\|_M^2,$$

whence the bound on  $\|x - x_h\|_Z$  follows using a triangle inequality. Finally, to derive the bound on  $h^{1/2} \|\theta - \theta_h\|_M$ , observe that for  $v_h \in V_h$  and since  $V_h \subset V$ ,

$$\begin{aligned} (\theta_h - \Pi_{\Lambda_h} \theta, B_h v_h)_M &= (\theta_h - \Pi_{\Lambda_h} \theta, B v_h)_M \\ &= (\theta_h - \theta, B v_h)_M + (\theta - \Pi_{\Lambda_h} \theta, B v_h)_M \\ &= \langle W'(u) - W'(u_h), v_h \rangle_{V', V} + r(\tilde{B}_h^\sharp(u - u_h), B v_h)_M + (\theta - \Pi_{\Lambda_h} \theta, B v_h - \Pi_{\Lambda_h} B v_h)_M \\ &\lesssim \|x - x_h\|_Z \|v_h\|_V + \|\theta - \Pi_{\Lambda_h} \theta\|_M \|B v_h - \Pi_{\Lambda_h} B v_h\|_M \\ &\lesssim (\|x - x_h\|_Z + h^{1/2} \|\theta - \Pi_{\Lambda_h} \theta\|_M) \|v_h\|_V, \end{aligned}$$

whence the desired estimate results from the discrete inf-sup condition and a triangle inequality.  $\square$

## APPENDIX B. PROOF OF PROPOSITION 5.2

*Proof.* Set  $\alpha := \alpha_W - k_{\psi'} c_M^2 c_B^2$  and  $\beta := r - k_{\psi'}$ . The couple  $(u_h, p_h) \in V_h \times M_h^+$  is such that

$$\langle W'(u_h), v_h \rangle_{V', V} + (\theta_h, B v_h)_M + r(B u_h - p_h, B v_h)_M = 0, \quad \forall v_h \in V_h, \quad (75)$$

$$(\psi'(p_h), q_h - p_h)_{M_h} - (\theta_h, q_h - p_h)_M - r(B u_h - p_h, q_h - p_h)_M \geq 0, \quad \forall q_h \in M_h^+, \quad (76)$$

$$\theta_h = \theta_h + \rho (\Pi_{M_h} B u_h - p_h). \quad (77)$$

The couple  $(u_h^n, p_h^n) \in V_h \times M_h^+$  is such that

$$\langle W'(u_h^n), v_h \rangle_{V', V} + (\theta_h^{n-1}, B v_h)_M + r(B u_h^n - p_h^{n-1}, B v_h)_M = 0, \quad \forall v_h \in V_h, \quad (78)$$

$$(\psi'(p_h^n), q_h - p_h^n)_{M_h} - (\theta_h^{n-1}, q_h - p_h^n)_M - r(B u_h^n - p_h^n, q_h - p_h^n)_M \geq 0, \quad \forall q_h \in M_h^+, \quad (79)$$

$$\theta_h^n = \theta_h^{n-1} + \rho (\Pi_{M_h} B u_h^n - p_h^n). \quad (80)$$

Set  $\bar{\theta}_h^n := \theta_h^n - \theta_h$ ,  $\bar{p}_h^n := p_h^n - p_h$ , and  $\bar{u}_h^n := u_h^n - u_h$ . Applying (75) and (78) to  $v_h = \bar{u}_h^n$  and subtracting yields

$$\langle W'(\bar{u}_h^n), \bar{u}_h^n \rangle_{V', V} + (\bar{\theta}_h^{n-1}, B \bar{u}_h^n)_M + r \|B \bar{u}_h^n\|_M^2 - r(\bar{p}_h^{n-1}, B \bar{u}_h^n)_M = 0, \quad (81)$$

where the linearity of  $W'$  has been used. Similarly, using (76) with  $q_h = p_h^n$  and (79) with  $q_h = p_h$  and subtracting leads to

$$(\psi'(p_h^n) - \psi'(p_h), p_h^n - p_h)_{M_h} - (\bar{\theta}_h^{n-1}, \bar{p}_h^n)_M + r \|\bar{p}_h^n\|_M^2 - r(\bar{p}_h^n, B \bar{u}_h^n)_M \leq 0. \quad (82)$$

Adding (81) and (82) yields

$$\begin{aligned} -(\bar{\theta}_h^{n-1}, B \bar{u}_h^n - \bar{p}_h^n)_M &\geq \langle W'(u_h^n), \bar{u}_h^n \rangle_{V', V} + (\psi'(p_h^n) - \psi'(p_h), p_h^n - p_h)_{M_h} \\ &\quad + r \|B \bar{u}_h^n - \bar{p}_h^n\|_M^2 + r(\bar{p}_h^n - \bar{p}_h^{n-1}, B \bar{u}_h^n)_M \\ &\geq \alpha_W \|\bar{u}_h^n\|_V^2 - k_{\psi'} \|\bar{p}_h^n\|_M^2 + r \|B \bar{u}_h^n - \bar{p}_h^n\|_M^2 + r(\bar{p}_h^n - \bar{p}_h^{n-1}, B \bar{u}_h^n)_M. \end{aligned} \quad (83)$$

In (83), the last term can be written

$$(B \bar{u}_h^n, \bar{p}_h^n - \bar{p}_h^{n-1})_M = (B \bar{u}_h^n - B \bar{u}_h^{n-1}, \bar{p}_h^n - \bar{p}_h^{n-1})_M + (B \bar{u}_h^{n-1} - \bar{p}_h^{n-1}, \bar{p}_h^n - \bar{p}_h^{n-1})_M + (\bar{p}_h^{n-1}, \bar{p}_h^n - \bar{p}_h^{n-1})_M.$$

Adding (79) written at iteration  $n - 1$  with  $q_h = p_h^n$  and (79) written at iteration  $n$  with  $q_h = p_h^{n-1}$  yields

$$\begin{aligned} -(\bar{\theta}_h^{n-2} - \bar{\theta}_h^{n-1}, \bar{p}_h^n - \bar{p}_h^{n-1})_M &\geq (\psi'(p_h^n) - \psi'(p_h^{n-1}), p_h^n - p_h^{n-1}) + r\|\bar{p}_h^n - \bar{p}_h^{n-1}\|_M^2 \\ &\quad - r(\bar{p}_h^n - \bar{p}_h^{n-1}, B\bar{u}_h^n - B\bar{u}_h^{n-1})_M \\ &\geq (r - k_\psi)\|\bar{p}_h^n - \bar{p}_h^{n-1}\|_M^2 - r(\bar{p}_h^n - \bar{p}_h^{n-1}, B\bar{u}_h^n - B\bar{u}_h^{n-1})_M. \end{aligned} \quad (84)$$

Owing to (80),

$$\bar{\theta}_h^{n-1} = \bar{\theta}_h^{n-2} + \rho(\Pi_{M_h} B\bar{u}_h^{n-1} - \bar{p}_h^{n-1}), \quad (85)$$

whence, owing to (84),

$$r(\bar{p}_h^n - \bar{p}_h^{n-1}, B\bar{u}_h^n - B\bar{u}_h^{n-1})_M \geq \beta\|\bar{p}_h^n - \bar{p}_h^{n-1}\|_M^2 - \rho(B\bar{u}_h^{n-1} - \bar{p}_h^{n-1}, \bar{p}_h^n - \bar{p}_h^{n-1})_M. \quad (86)$$

This equation can be reorganized as

$$\begin{aligned} r(B\bar{u}_h^n, \bar{p}_h^n - \bar{p}_h^{n-1})_M &\geq \beta\|\bar{p}_h^n - \bar{p}_h^{n-1}\|_M^2 + (r - \rho)(B\bar{u}_h^{n-1} - \bar{p}_h^{n-1}, \bar{p}_h^n - \bar{p}_h^{n-1})_M \\ &\quad + r(\bar{p}_h^{n-1}, \bar{p}_h^n - \bar{p}_h^{n-1})_M. \end{aligned}$$

Using the identity  $2(\bar{p}_h^{n-1}, \bar{p}_h^n - \bar{p}_h^{n-1})_M = \|\bar{p}_h^n\|_M^2 - \|\bar{p}_h^{n-1}\|_M^2 - \|\bar{p}_h^n - \bar{p}_h^{n-1}\|_M^2$ , we turn (86) into

$$\begin{aligned} 2r(B\bar{u}_h^n, \bar{p}_h^n - \bar{p}_h^{n-1})_M &\geq (2\beta - r)\|\bar{p}_h^n - \bar{p}_h^{n-1}\|_M^2 + r(\|\bar{p}_h^n\|_M^2 - \|\bar{p}_h^{n-1}\|_M^2) \\ &\quad + 2(r - \rho)(B\bar{u}_h^{n-1} - \bar{p}_h^{n-1}, \bar{p}_h^n - \bar{p}_h^{n-1})_M. \end{aligned} \quad (87)$$

Squaring (85) leads to

$$\|\bar{\theta}_h^{n-1}\|_M^2 - \|\bar{\theta}_h^n\|_M^2 \geq -2\rho(\bar{\theta}_h^{n-1}, B\bar{u}_h^n - \bar{p}_h^n)_M - \rho^2\|B\bar{u}_h^n - \bar{p}_h^n\|_M^2.$$

Finally, collecting (83) and (87) yields

$$\begin{aligned} \|\bar{\theta}_h^{n-1}\|_M^2 - \|\bar{\theta}_h^n\|_M^2 &\geq 2\rho\alpha\|\bar{u}_h^n\|_V^2 + \rho(2\beta - \rho)\|B\bar{u}_h^n - \bar{p}_h^n\|_M^2 + \rho(2\beta - r)\|\bar{p}_h^n - \bar{p}_h^{n-1}\|_M^2 \\ &\quad + r\rho(\|\bar{p}_h^n\|_M^2 - \|\bar{p}_h^{n-1}\|_M^2) + 2\rho(r - \rho)(B\bar{u}_h^{n-1} - \bar{p}_h^{n-1}, \bar{p}_h^n - \bar{p}_h^{n-1})_M \\ \Leftrightarrow (\|\bar{\theta}_h^{n-1}\|_M^2 + r\rho\|\bar{p}_h^{n-1}\|_M^2) - (\|\bar{\theta}_h^n\|_M^2 + r\rho\|\bar{p}_h^n\|_M^2) &\geq 2\rho\alpha\|\bar{u}_h^n\|_V^2 + \rho(2\beta - \rho)\|B\bar{u}_h^n - \bar{p}_h^n\|_M^2 \\ &\quad + \rho(2\beta - r)\|\bar{p}_h^n - \bar{p}_h^{n-1}\|_M^2 + 2\rho(r - \rho)(B\bar{u}_h^{n-1} - \bar{p}_h^{n-1}, \bar{p}_h^n - \bar{p}_h^{n-1})_M \\ \Rightarrow (\|\bar{\theta}_h^{n-1}\|_M^2 + r\rho\|\bar{p}_h^{n-1}\|_M^2) - (\|\bar{\theta}_h^n\|_M^2 + r\rho\|\bar{p}_h^n\|_M^2) &\geq 2\rho\alpha\|\bar{u}_h^n\|_V^2 + \rho(2\beta - \rho)\|B\bar{u}_h^n - \bar{p}_h^n\|_M^2 \\ &\quad + \rho(2\beta - r)\|\bar{p}_h^n - \bar{p}_h^{n-1}\|_M^2 - \rho|r - \rho|(\|B\bar{u}_h^{n-1} - \bar{p}_h^{n-1}\|_M^2 + \|\bar{p}_h^n - \bar{p}_h^{n-1}\|_M^2). \end{aligned} \quad (88)$$

Set  $\epsilon^n = \|\bar{\theta}_h^n\|_M^2 + r\rho\|\bar{p}_h^n\|_M^2 + \rho(r - \rho)\|B\bar{u}_h^n - \bar{p}_h^n\|_M^2$ . Since  $r \geq \rho$ , (88) can be rewritten as

$$\epsilon^{n-1} - \epsilon^n \geq 2\rho\alpha\|\bar{u}_h^n\|_V^2 + \rho(2\beta - r)\|B\bar{u}_h^n - \bar{p}_h^n\|_M^2 + \rho(2\beta - 2r + \rho)\|\bar{p}_h^n - \bar{p}_h^{n-1}\|_M^2.$$

By assumption,  $r > 2k_\psi$ ,  $r \geq \rho > 0$ , and  $2\beta - 2r + \rho \geq 0$ . Hence,  $\rho\alpha > 0$  and  $2\beta - r > 0$ . Thus, the sequence  $(\epsilon^n)_{n \in \mathbb{N}}$  is positive and decreasing, thus it converges. As a consequence, the sequences  $(u_h^n)_{n \in \mathbb{N}}$  and  $(p_h^n)_{n \in \mathbb{N}}$  converge. The sequence  $(\theta_h^n)_{n \in \mathbb{N}}$  is bounded. According to the Bolzano–Weierstrass theorem, there exists a converging subsequence. By uniqueness of the discrete solution  $(u_h, p_h, \theta_h)$ ,  $(u_h^n)$  converges to  $u_h$ ,  $(p_h^n)$  converges to  $p$ , and the whole sequence  $(\theta_h^n)$  converges to  $\theta_h$ .  $\square$



## REFERENCES

- [1] P. Alart and A. Curnier. A mixed formulation for frictional contact problems prone to Newton like solution methods. *Comput. Methods Appl. Mech. Engrg.*, 92(3):353–375, 1991.
- [2] K. J. Bathe and F. Brezzi. Stability of finite element mixed interpolations for contact problems. *Atti Accad. Naz. Lincei Cl. Sci. Fis. Mat. Natur. Rend. Lincei (9) Mat. Appl.*, 12:167–183 (2002), 2001.
- [3] D. P. Bertsekas. *Constrained Optimization and Lagrange Multiplier Methods*. Athena Scientific, 1982.
- [4] D. P. Bertsekas. *Nonlinear Programming*. Athena Scientific, 1999.
- [5] B. Bourdin, G. A. Francfort, and J.-J. Marigo. The variational approach to fracture. *J. Elasticity*, 91(1-3):5–148, 2008.
- [6] L. Champaney, J.-Y. Cognard, and P. Ladevèze. Modular analysis of assemblages of three-dimensional structures with unilateral contact conditions. *Computers & Structures*, 73:249–266, 1999.
- [7] Z. Chen. On the augmented Lagrangian approach to Signorini elastic contact problem. *Numer. Math.*, 88(4):641–659, 2001.
- [8] P. G. Ciarlet. *Mathematical elasticity. Vol. I*, volume 20 of *Studies in Mathematics and its Applications*. North-Holland Publishing Co., Amsterdam, 1988. Three-dimensional elasticity.
- [9] F. H. Clarke. *Optimization and nonsmooth analysis*, volume 5 of *Classics in Applied Mathematics*. Society for Industrial and Applied Mathematics (SIAM), Philadelphia, PA, second edition, 1990.
- [10] Z. Denkowski, S. Migórski, and N. S. Papageorgiou. *An introduction to nonlinear analysis: applications*. Kluwer Academic Publishers, Boston, MA, 2003.
- [11] I. Ekeland and R. Témam. *Convex analysis and variational problems*, volume 28 of *Classics in Applied Mathematics*. Society for Industrial and Applied Mathematics (SIAM), Philadelphia, PA, english edition, 1999. Translated from the French.
- [12] A. Ern and J.-L. Guermond. *Theory and Practice of Finite Elements*, volume 159 of *Applied Mathematical Sciences*. Springer-Verlag, New York, NY, 2004.
- [13] M. Fortin and R. Glowinski. *Augmented Lagrangian methods*, volume 15 of *Studies in Mathematics and its Applications*. North-Holland Publishing Co., Amsterdam, 1983. Applications to the numerical solution of boundary value problems, Translated from the French by B. Hunt and D. C. Spicer.
- [14] M. Frémond. Contact with adhesion. In *Topics in nonsmooth mechanics*, pages 157–185. Birkhäuser, Basel, 1988.
- [15] R. Glowinski and P. Le Tallec. *Augmented Lagrangian and operator-splitting methods in nonlinear mechanics*, volume 9 of *SIAM Studies in Applied Mathematics*. Society for Industrial and Applied Mathematics (SIAM), Philadelphia, PA, 1989.
- [16] J. Haslinger, I. Hlaváček, and J. Nečas. Numerical methods for unilateral problems in solid mechanics. In *Handbook of numerical analysis, Vol. IV*, Handb. Numer. Anal., IV, pages 313–485. North-Holland, Amsterdam, 1996.
- [17] P. Hauret and P. Le Tallec. A discontinuous stabilized mortar method for general 3d elastic problems. *Computer Methods in Applied Mechanics and Engineering*, 196:4881–4900, 2007.
- [18] P. Hild and P. Laborde. Quadratic finite element methods for unilateral contact problems. *Appl. Numer. Math.*, 41(3):401–421, 2002.
- [19] S. Hüeber and B. I. Wohlmuth. An optimal a priori error estimate for nonlinear multibody contact problems. *SIAM J. Numer. Anal.*, 43(1):156–173 (electronic), 2005.
- [20] N. Kikuchi and J. T. Oden. *Contact problems in elasticity: a study of variational inequalities and finite element methods*, volume 8 of *SIAM Studies in Applied Mathematics*. Society for Industrial and Applied Mathematics (SIAM), Philadelphia, PA, 1988.
- [21] D. Kinderlehrer. Remarks about Signorini’s problem in linear elasticity. *Ann. Scuola Norm. Sup. Pisa Cl. Sci. (4)*, 8(4):605–645, 1981.
- [22] K. Kunisch and G. Stadler. Generalized Newton methods for the 2D-Signorini contact problem with friction in function space. *M2AN Math. Model. Numer. Anal.*, 39(4):827–854, 2005.
- [23] P. Ladevèze. *Nonlinear Computational Structural Mechanics - New Approaches and Non-Incremental Methods of Calculation*. Springer-Verlag, 1999.
- [24] J.-L. Lions and E. Magenes. *Non-homogeneous boundary value problems and applications. Vol. I*. Springer-Verlag, New York, 1972. Translated from the French by P. Kenneth, Die Grundlehren der mathematischen Wissenschaften, Band 181.
- [25] E. Lorentz. A mixed interface finite element for cohesive zone models. *Computer Methods in Applied Mechanics and Engineering*, 198:302–317, 2008.
- [26] M. Moussaoui and K. Khodja. Régularité des solutions d’un problème mêlé Dirichlet-Signorini dans un domaine polygonal plan. *Comm. Partial Differential Equations*, 17(5-6):805–826, 1992.
- [27] L. Q. Qi and J. Sun. A nonsmooth version of Newton’s method. *Math. Programming*, 58(3, Ser. A):353–367, 1993.
- [28] L. Slimane, A. Bendali, and P. Laborde. Mixed formulations for a class of variational inequalities. *M2AN Math. Model. Numer. Anal.*, 38(1):177–201, 2004.